

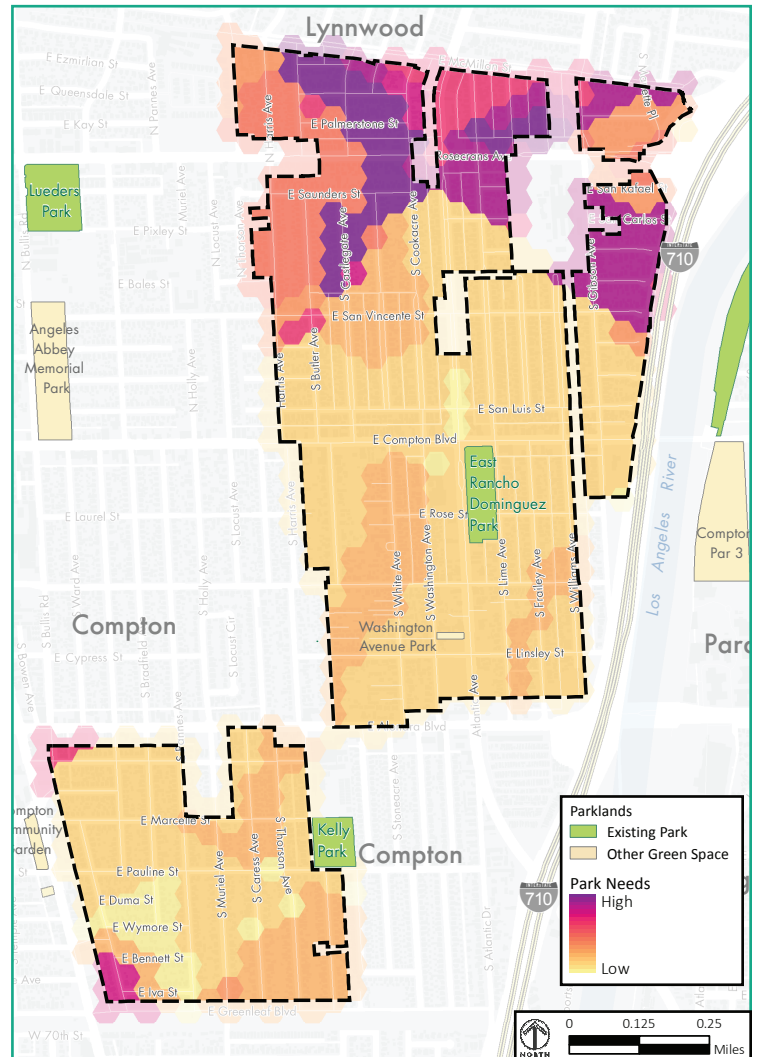
EAST RANCHO DOMINGUEZ

Community Parks & Recreation Plan

PURPOSE OF THE PLAN

The purpose of the Plan is to provide a vision and roadmap for a greener and healthier East Rancho Dominguez, including a more extensive network of publicly-accessible green spaces and recreational facilities, as well as environmental enhancement projects. The Plan provides specific implementation actions to be taken by the County in order to achieve the vision of improved public and environmental health in the community. These include acquiring space for new parks, enhancing existing recreational facilities and programs, and establishing and strengthening partnerships – all with an emphasis on enhanced community health and safety. The Plan builds on growing momentum within East Rancho Dominguez and neighboring areas to improve green space and access to exercise and healthy food. The Plan includes a summary of community needs and documents the call for additional greening in East Rancho Dominguez.

Where are parks most needed in East Rancho Dominguez?



ENVIRONMENTAL BENEFITS OF EXISTING PARK

139,000
gallons of
stormwater
intercepted
annually

112
pounds of
reduced air
pollutants
annually

13,000
tons of CO₂
sequestered
annually

PARKS AND GREENING PROFILE

East Rancho Dominguez has a severe deficit of parkland and significant public safety issues. East Rancho Dominguez Park, the only existing County Park in the community, is approximately 5.5 acres in size. The Los Angeles County General Plan establishes a goal of 4 acres of local parks per 1,000 residents. With a population of approximately 15,000 residents, East Rancho Dominguez only has approximately **0.4 acres of local parks per 1,000 residents**, a figure significantly below the General Plan standard. This leaves many residents with limited access to recreational opportunities or dependent on parks outside their community for green space.

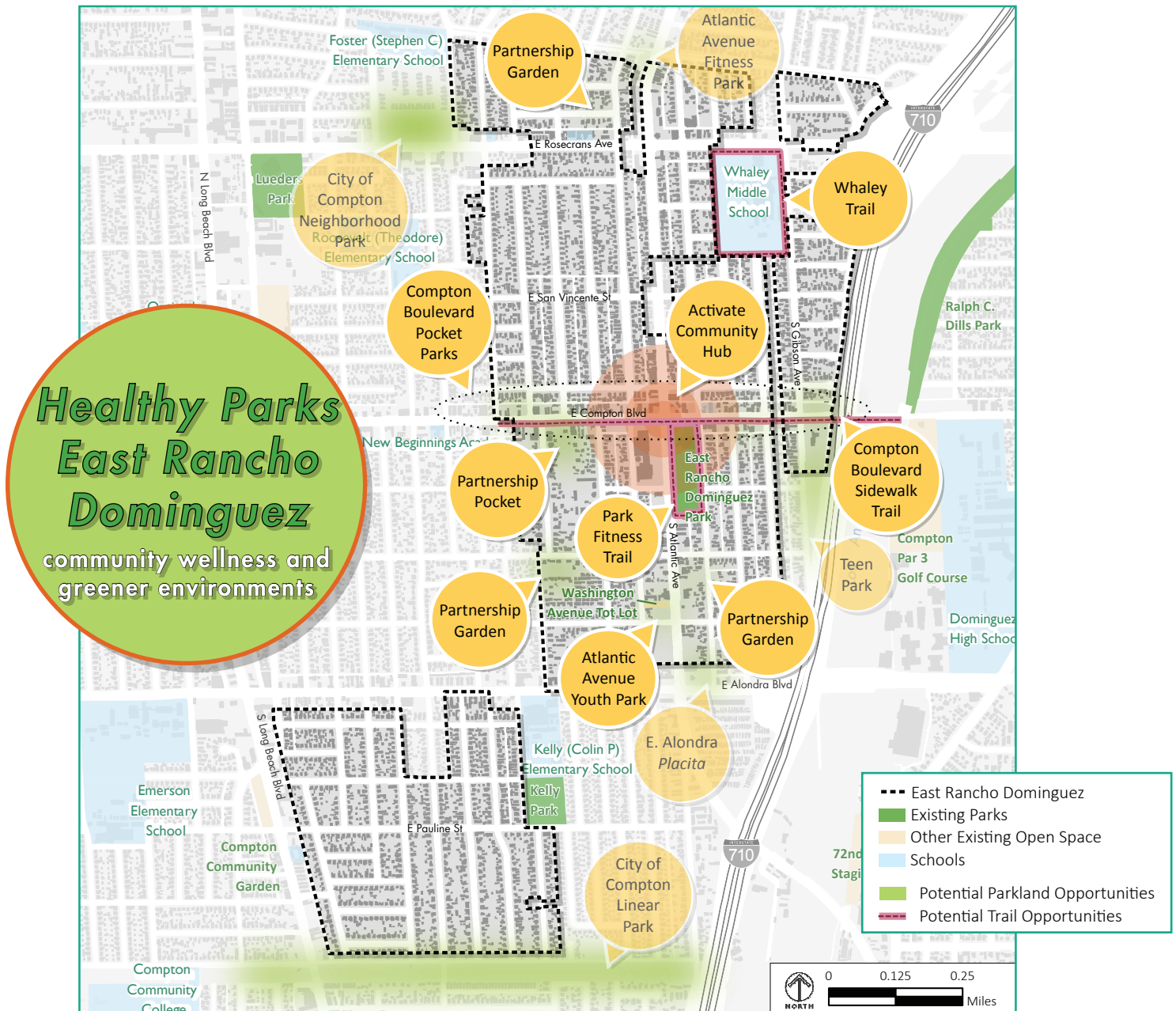
Additional issues, such as **unsafe street conditions** and **high levels of crime**, affect the ability of residents to connect to parks and other public amenities, including the nearby Los Angeles River bikeway and trail. Coupled with other local **environmental issues**, including low urban tree canopy and emissions from the nearby 710 freeway, these issues create a **high community need** for increased parks and green spaces.



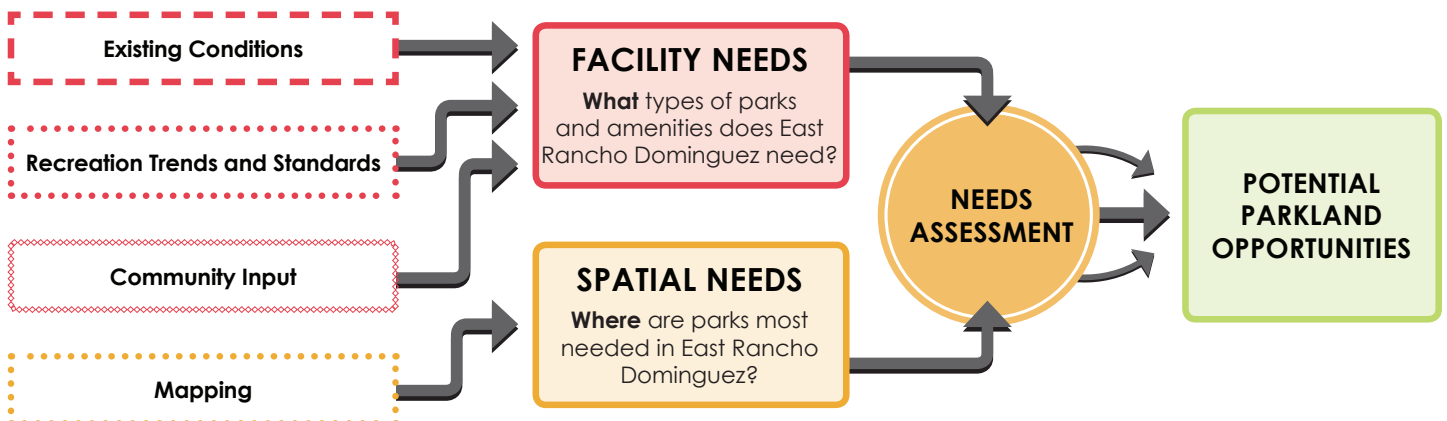
Community Members at the Outreach Workshop.

EAST RANCHO DOMINGUEZ GREEN VISION MAP

This map identifies potential park, trail, and greening projects that may be implemented in the short, medium, and/or long term to meet the needs of East Rancho Dominguez.



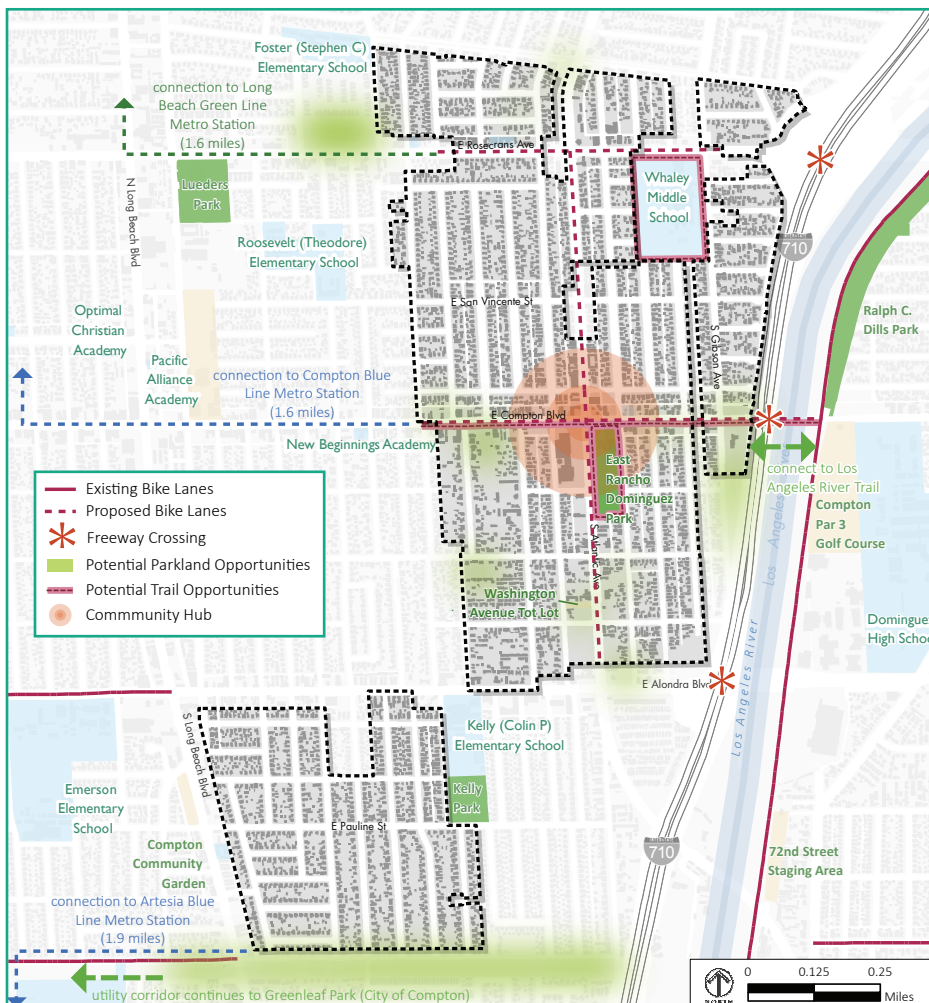
SITE IDENTIFICATION PROCESS



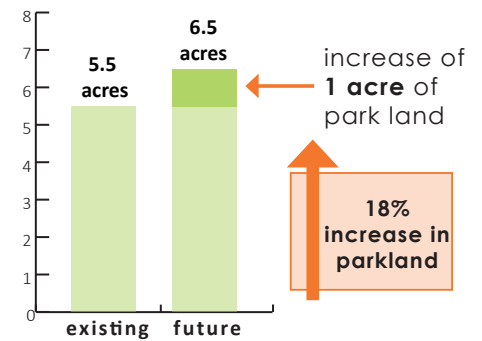
GOALS FOR EAST RANCHO DOMINGUEZ

1. Increase overall green space and create new recreational opportunities that promote healthy lifestyles.
2. Provide new places for active recreation and safe places to walk and exercise.
3. Partner with community groups to develop small green spaces to fill the need for healthy food and exercise.
4. Ensure that residents feel comfortable in existing and future park spaces.
5. Promote activities and projects that enhance the community heart near Compton Boulevard and Atlantic Avenue.
6. Support community identity by providing space for public art, events, and commercial enterprise.
7. Increase the sense of nature within East Rancho Dominguez Park and future parks and create connections to the Los Angeles River watershed.
8. Maintain and enhance East Rancho Dominguez's urban forest.
9. Focus on multi-benefit urban greening projects that optimize environmental services.
10. Foster public participation in park projects and ensure that the community is included in decision-making processes.

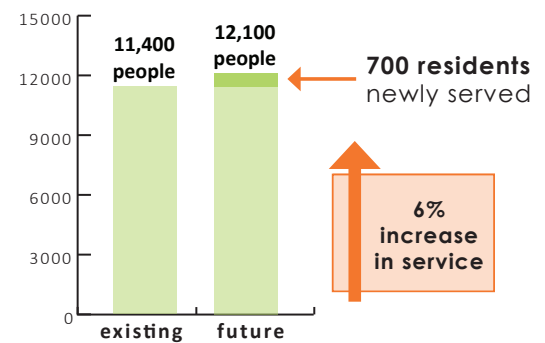
CURRENT AND FUTURE CONNECTIONS



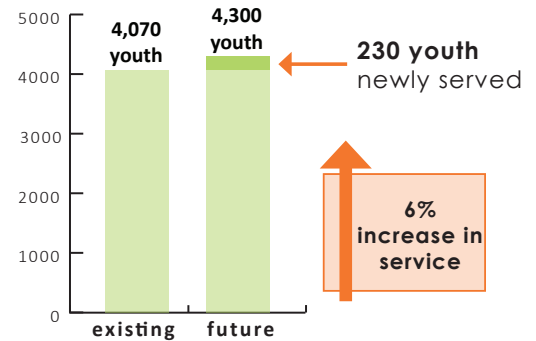
Service improvements (with the addition of potential new parks) Parkland Acres



Total Population Served



Youth Population (Under 18) Served

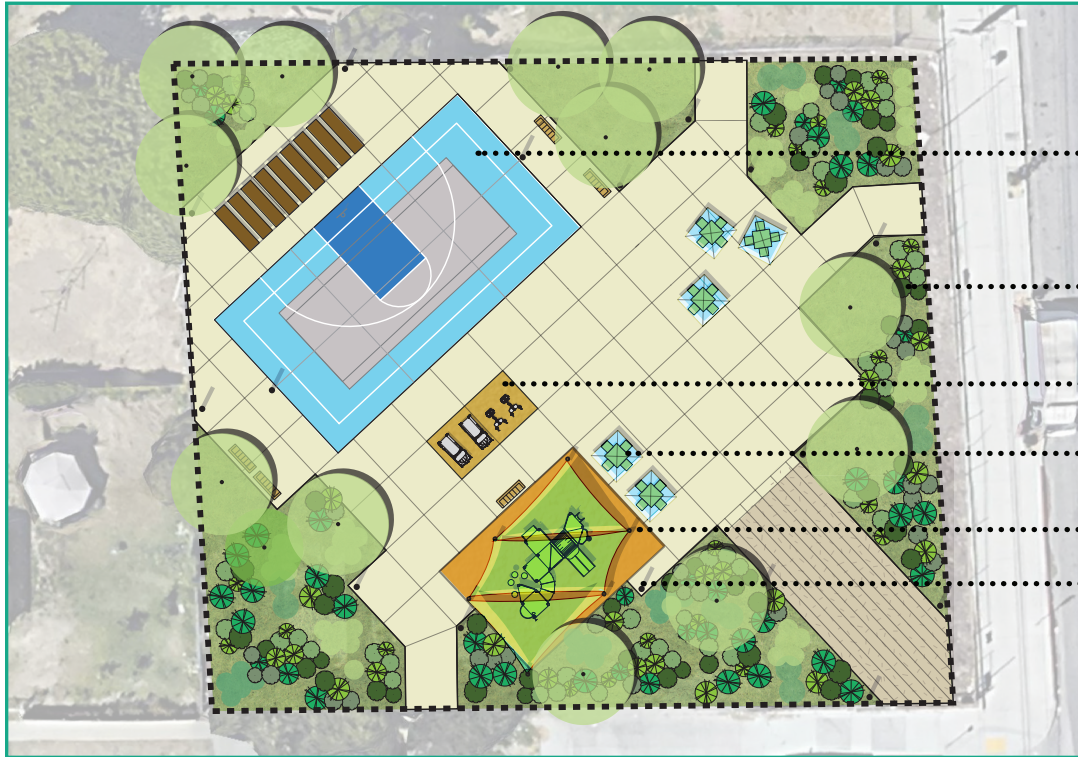


Graphs show improvements based on the addition of high priority park projects.



Feedback Board from Community Outreach Fair.

CONCEPTUAL YOUTH AND TEEN POCKET PARK



multipurpose sports court

landscape buffer from street

fitness equipment

shaded picnic tables

play area

lighting throughout the site

CONCEPTUAL DIRECTIONAL SIGNAGE TO THE LOS ANGELES RIVER



CONCEPTUAL FITNESS TRAIL AT EAST RANCHO DOMINGUEZ PARK

fitness node integrated into senior center plaza

trail to follow sidewalk to avoid large trees

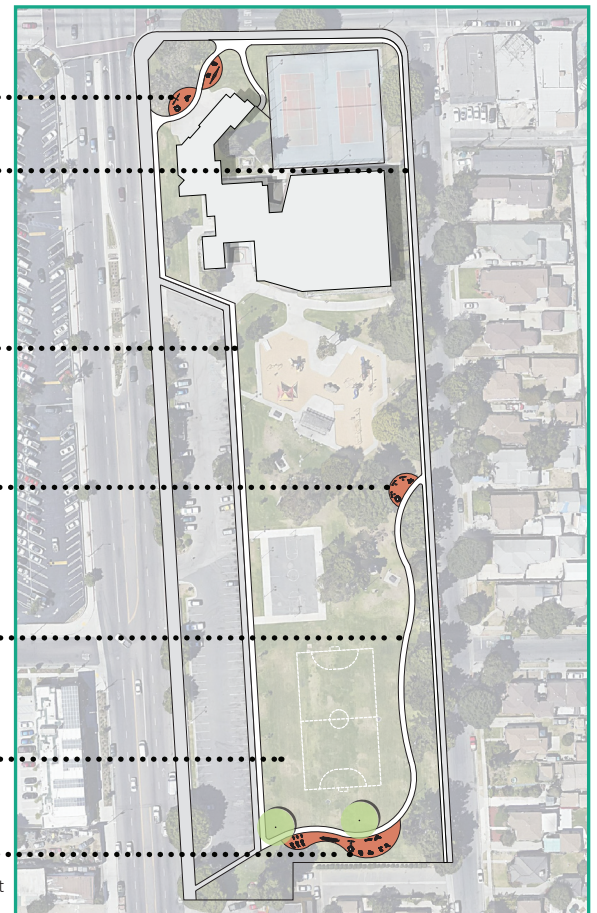
6-foot wide perimeter walking path

fitness node for parents watching children in play area

trail to meander to avoid large trees

trail alignment should allow space for soccer

main fitness area



0 5 10 20 Feet



For more information, contact:

Clement Lau, AICP, Departmental Facilities Planner
County of Los Angeles Department of Parks and Recreation
Tel: (213) 351-5120; E-mail: clau@parks.lacounty.gov