

Master Plan / El Plan Maestro del Parque Earvin “Magic” Johnson Recreation Area



Draft Environmental Impact Report (DEIR) Public Meeting

September 12, 2015

Agenda

- Introductions / Opening Remarks
- Willowbrook Community Video
- Project Overview
- Community Outreach Summary
- Master Plan Conceptual Design
- CEQA Review Process
- Draft Environmental Impact Report (DEIR) Key Components
- Open for Comments

PROJECT OVERVIEW



COMMUNITY OUTREACH

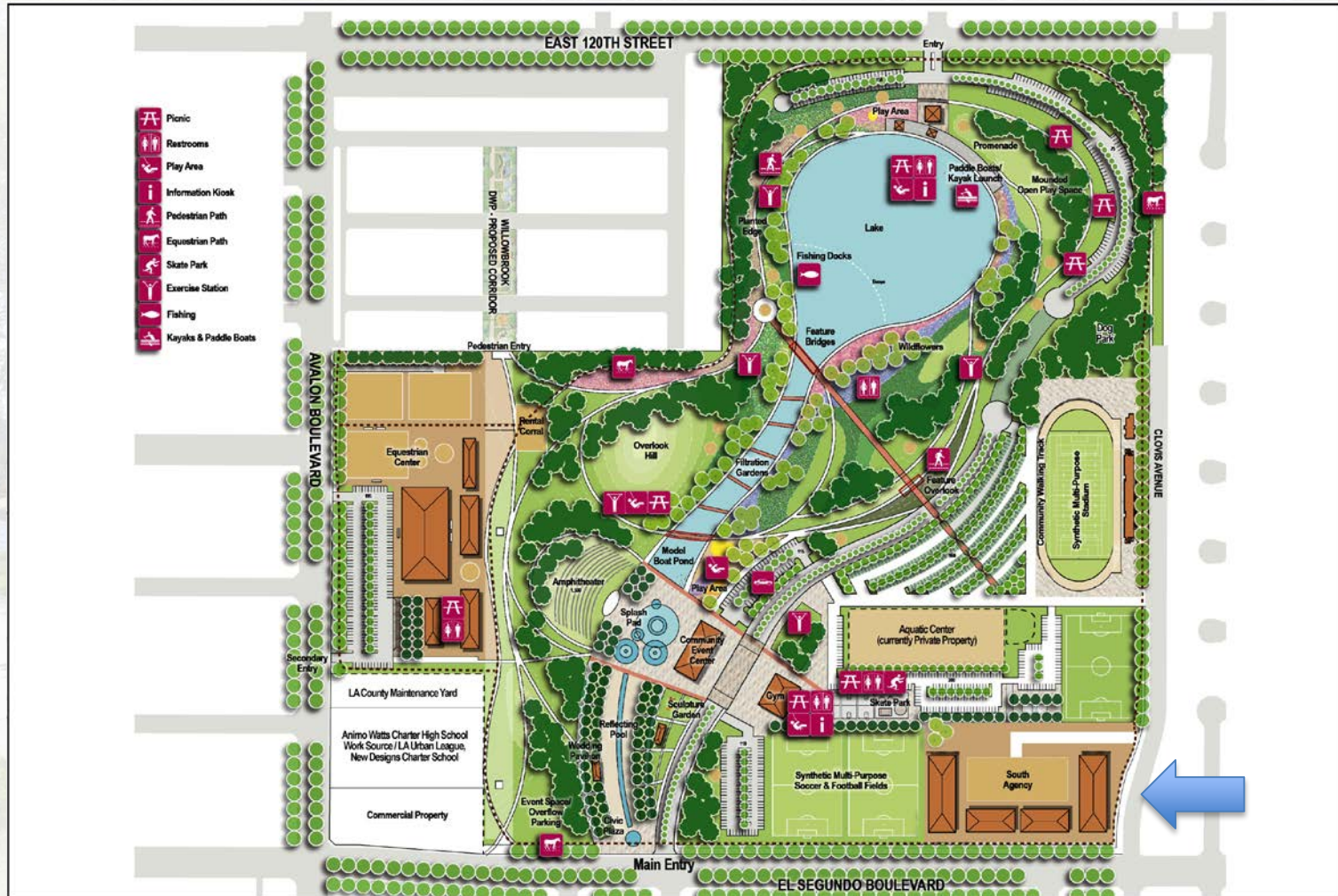
<u>Event</u>	<u>Date</u>
At-the-Park Event	May 24, 2014
Community Workshop #1	June 14, 2014
At-the-Park Event	August 9, 2014
Community Workshop #2	August 23, 2014
At-the-Park Event	September 13, 2014
Community Workshop #3/Scoping Meeting	November 1, 2014
CEQA (DEIR) - Notice of Availability	September 2, 2015
CEQA (DEIR) - Public Meeting	September 12, 2015
Regional Planning Commission Hearing	<i>December 9, 2015 *</i>
Board of Supervisors Presentation	<i>December 22, 2015 *</i>

* Target dates

PROPOSED MASTER PLAN



Alternative 2: South Agency Headquarters



Alternative 3: Equestrian Center





The Water Journey / Civic



The Water Journey / Community



The Water Journey / Recreation



The Water Journey / The Clean Lake

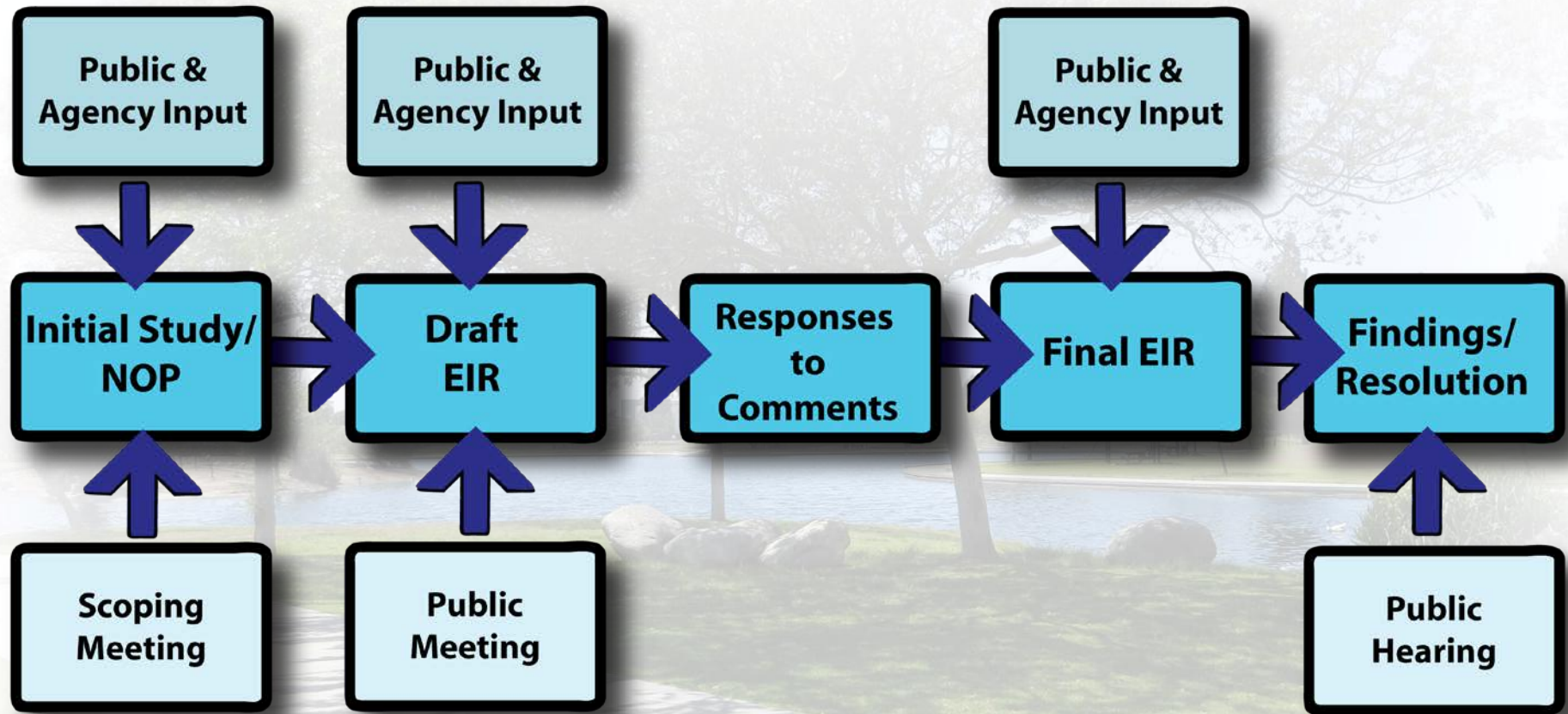


Streetscape



Multi-use Pedestrian Path

CEQA REVIEW PROCESS



Draft Environmental Impact Report Key Components

Project Description

- Project Location and Surrounding Land Uses
- Project Background
- Land Use Designation and Zoning
- Existing Site Conditions
- Proposed Project
- Project Objectives
- Discretionary Actions and Approvals



Draft Environmental Impact Report

Environmental Analysis

- Aesthetics, Light and Glare
- Air Quality
- Hazards and Hazardous Materials
- Geology, Soils and Seismicity
- Greenhouse Gas Emissions/Climate Change
- Transportation and Circulation
- Cultural Resources
- Biological Resources
- Hydrology and Water Quality
- Land Use
- Noise
- Public Services and Utilities
- Recreation

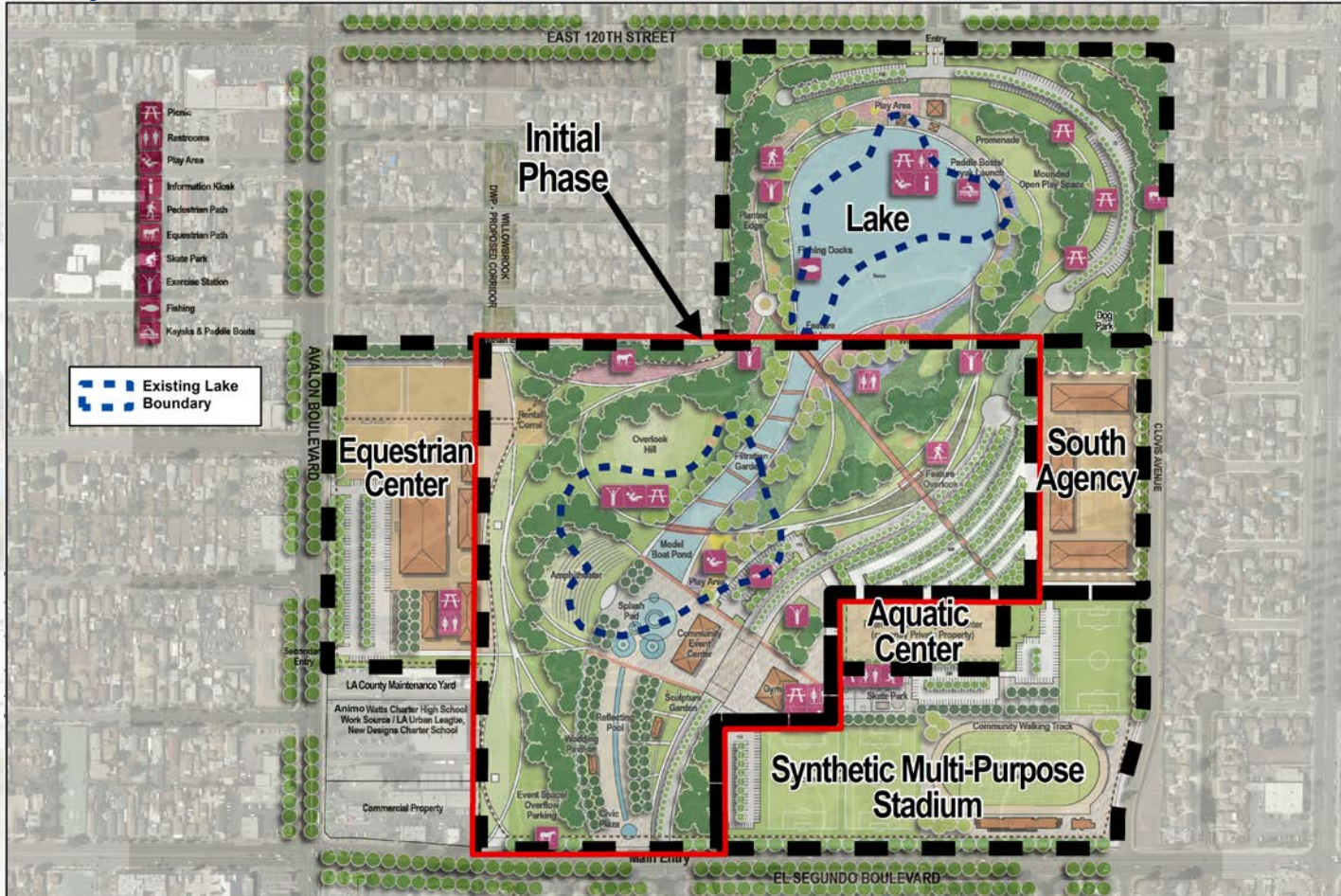


DEIR – Example of Mitigation Measures

- No development of any park phasing to occur until remediation is complete for that phase of development and is deemed safe for the public by the regulatory agencies.
- Development of noise management plan prior to start of construction
- Construction hours limited to 7 am - 9 pm
- Audio system at the various park venues (stadium, amphitheater, aquatic, etc) will have a noise level regulator
- Competing large events to be managed/scheduled to minimize traffic concerns

Initial Implementation Phase

Components



What happens next:

**Final Master Plan and Final EIR
Regional Planning Commission Hearing
Board of Supervisors Presentation**

December 2, 2015

December 9, 2015 *

December 22, 2015 *

* Target Dates

OPEN COMMENT PERIOD

September 2, 2015 to October 16, 2015

**Provide Written or Email Comment, Postmarked
By 10/16/15**

Send DEIR Comments to:

Mail to:

County of Los Angeles
Department of Parks and Recreation
Attn: Jui Ing Chien, Park Planner
510 S. Vermont Avenue, Room 201
Los Angeles, CA 90020

or

Email: jchien@parks.lacounty.gov