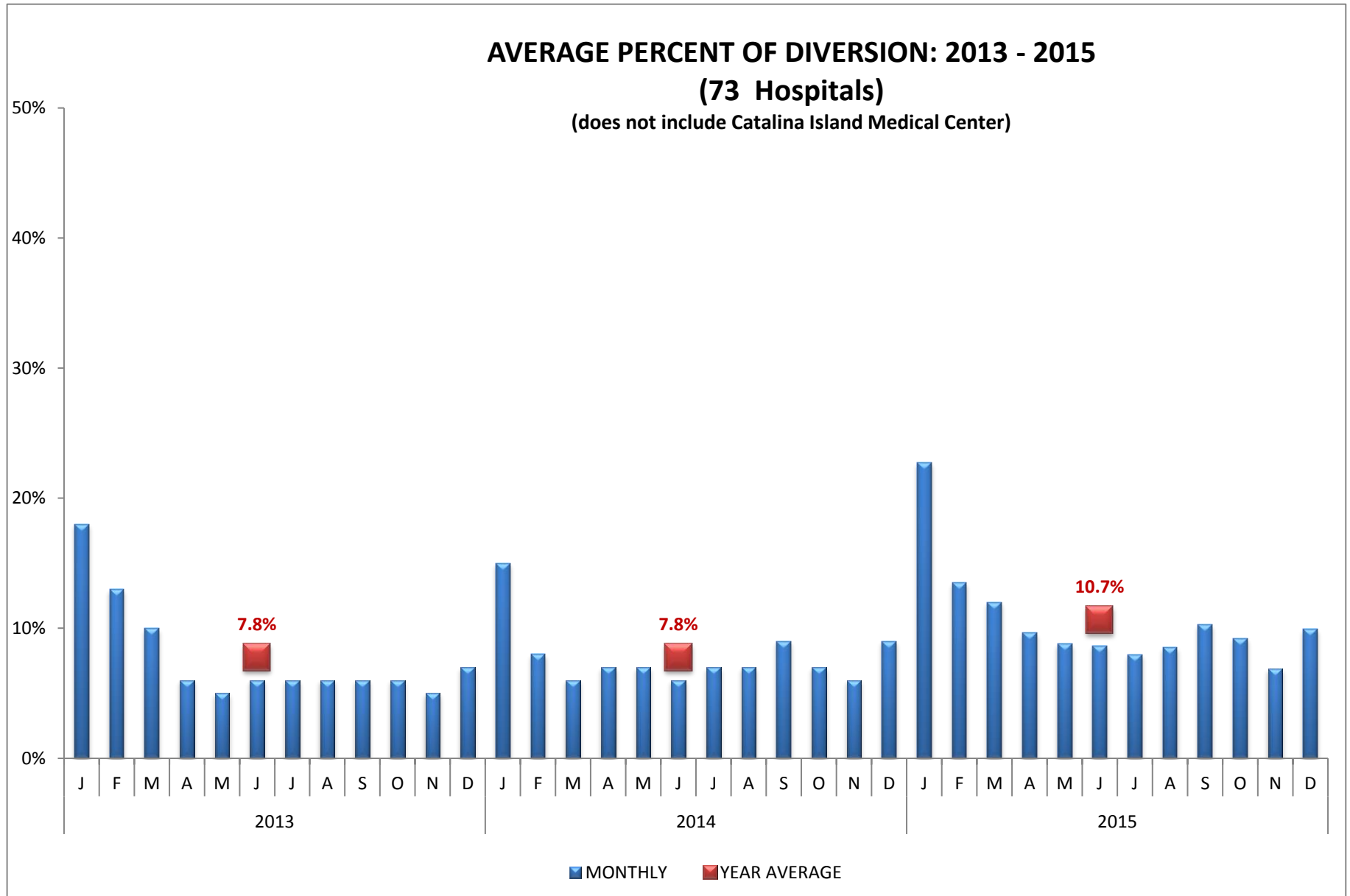


HOSPITAL DIVERSION TO 9-1-1 TRAFFIC
due TO EMERGENCY DEPARTMENT SATURATION

LOS ANGELES COUNTY 9-1-1 RECEIVING HOSPITALS (n=73 Hospitals)

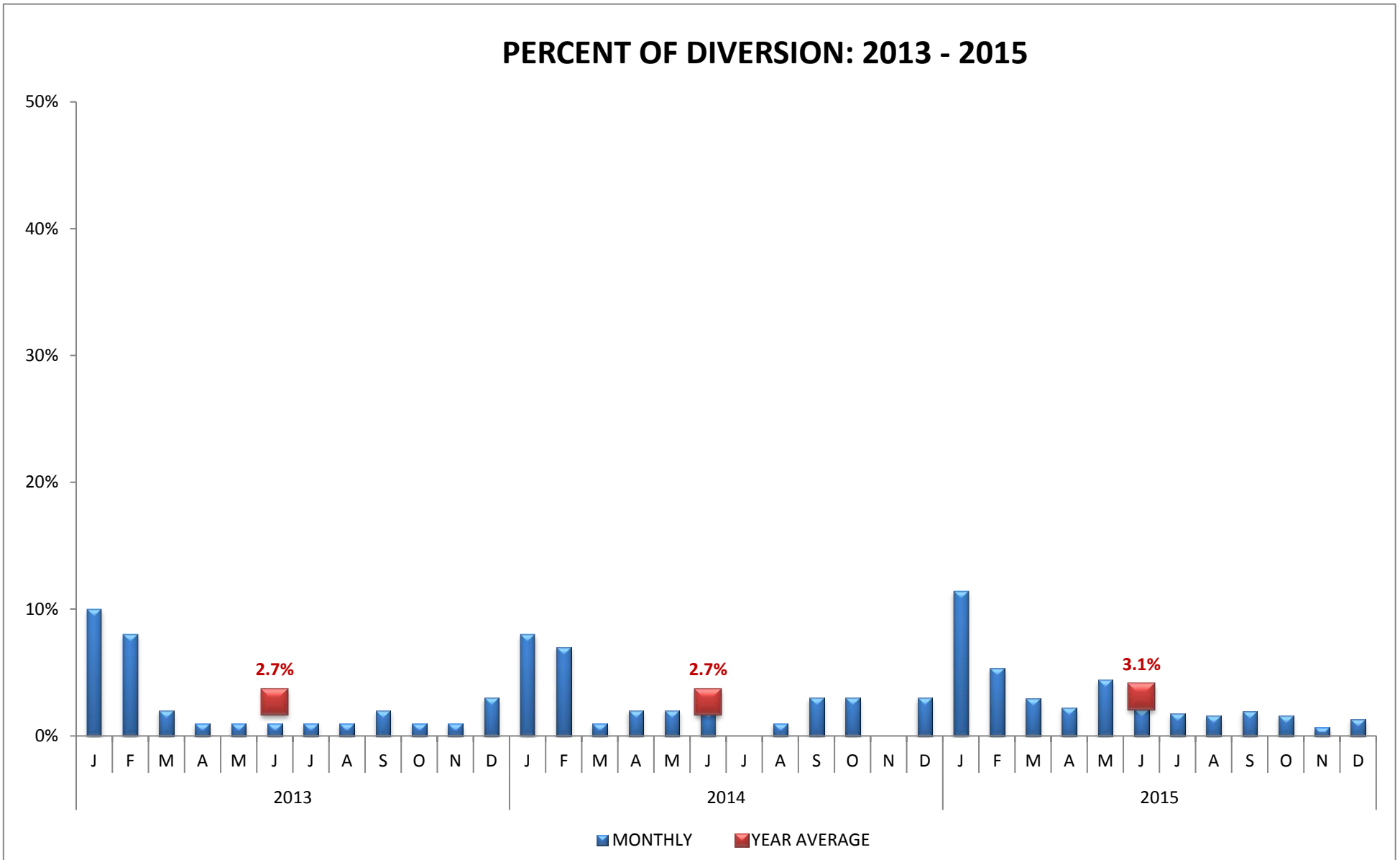


Values represent the AVERAGE incidence of ED Saturation. 100% equals the total number of hours per month.

HOSPITAL DIVERSION TO 9-1-1 TRAFFIC
 due to EMERGENCY DEPARTMENT SATURATION

ANTELOPE VALLEY - NEWHALL REGION (n=3 Hospitals)

PERCENT OF DIVERSION: 2013 - 2015

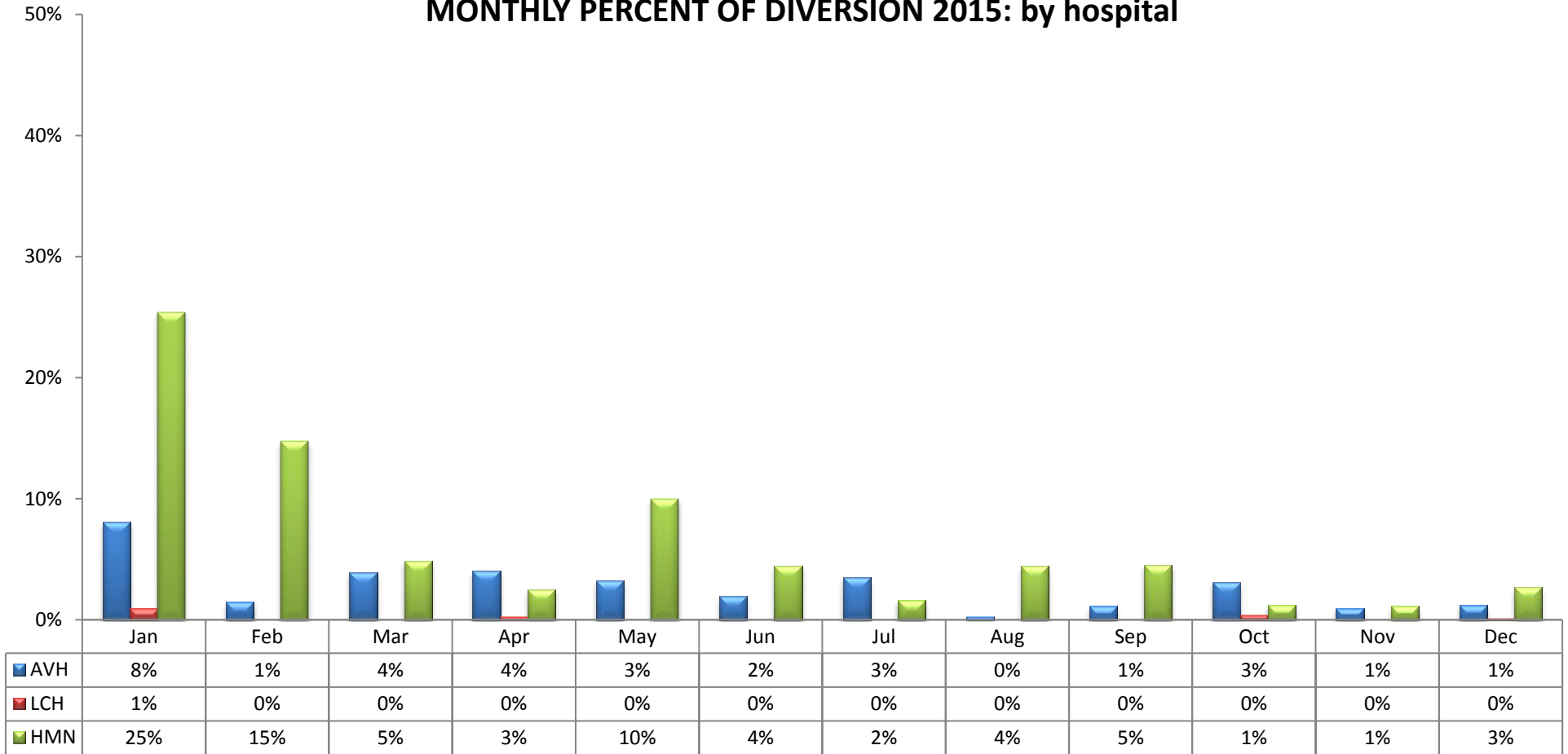


Values represent the AVERAGE incidence of ED Saturation. 100% equals the total number of hours per month.

**HOSPITAL DIVERSION TO 9-1-1 TRAFFIC
due to EMERGENCY DEPARTMENT SATURATION**

ANTELOPE VALLEY - NEWHALL REGION (n=3 Hospitals)

MONTHLY PERCENT OF DIVERSION 2015: by hospital

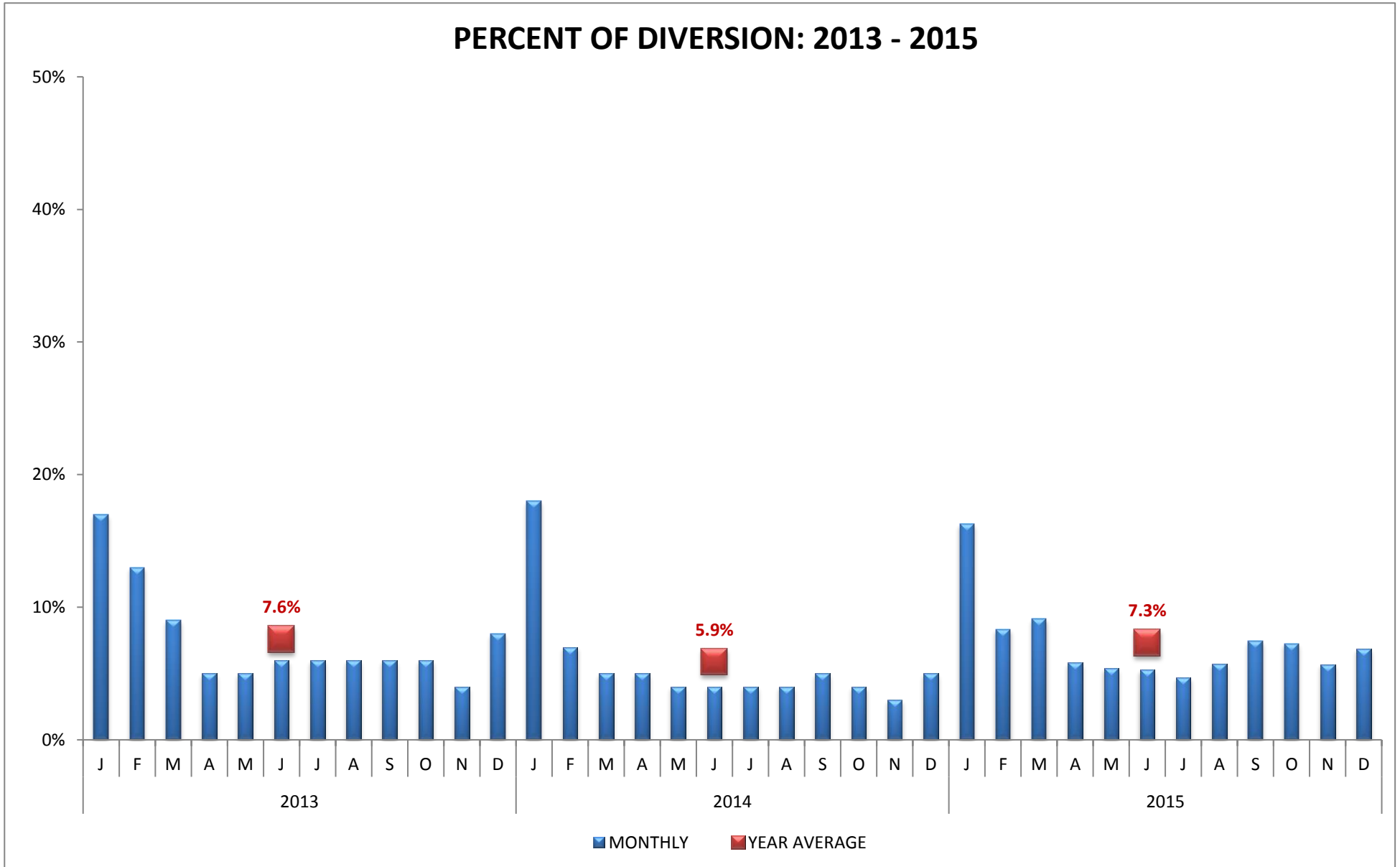


CODE	HOSPITAL NAME	CODE	HOSPITAL NAME	CODE	HOSPITAL NAME
AVH	Antelope Valley Hospital	LCH	Palmdale Regional Medical Center	HMN	Henry Mayo Newhall Memorial Hospital

HOSPITAL DIVERSION TO 9-1-1 TRAFFIC
due to EMERGENCY DEPARTMENT SATURATION

SAN FERNANDO VALLEY REGION (n=16 Hospitals)

PERCENT OF DIVERSION: 2013 - 2015

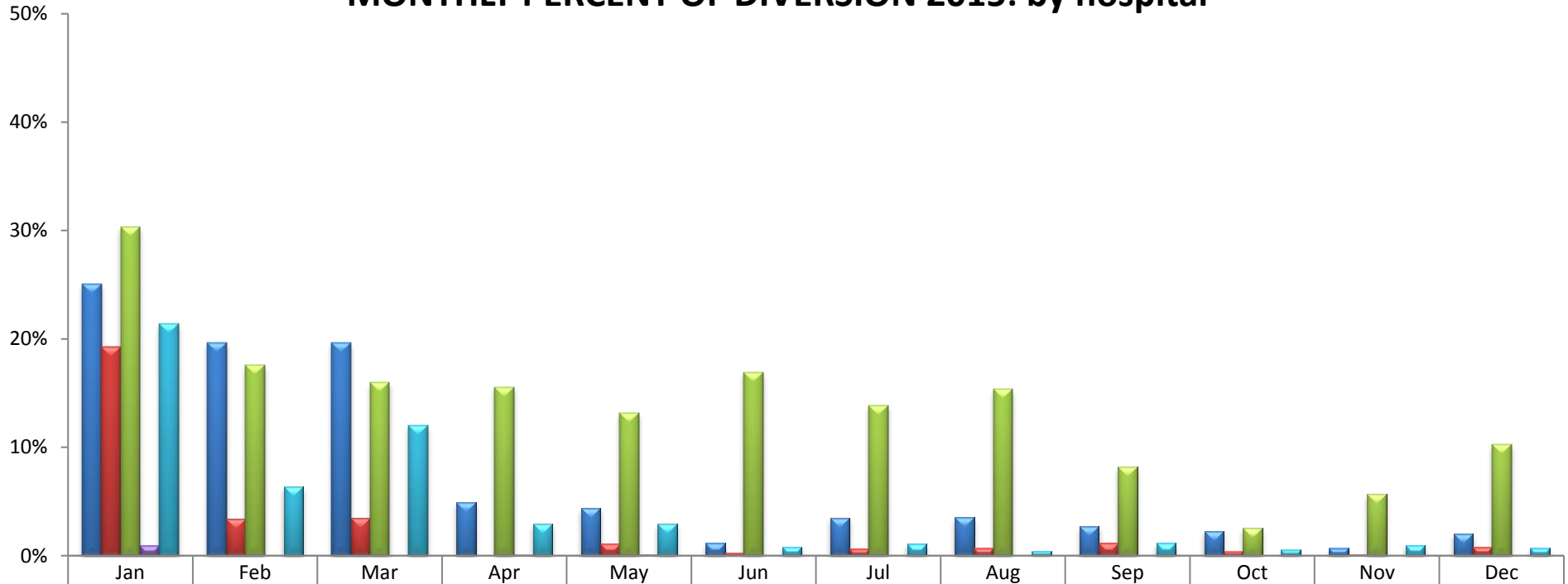


Values represent the AVERAGE incidence of ED Saturation. 100% equals the total number of hours per month.

**HOSPITAL DIVERSION TO 9-1-1 TRAFFIC
due to EMERGENCY DEPARTMENT SATURATION**

SAN FERNANDO VALLEY REGION (n=16 Hospitals)

MONTHLY PERCENT OF DIVERSION 2015: by hospital



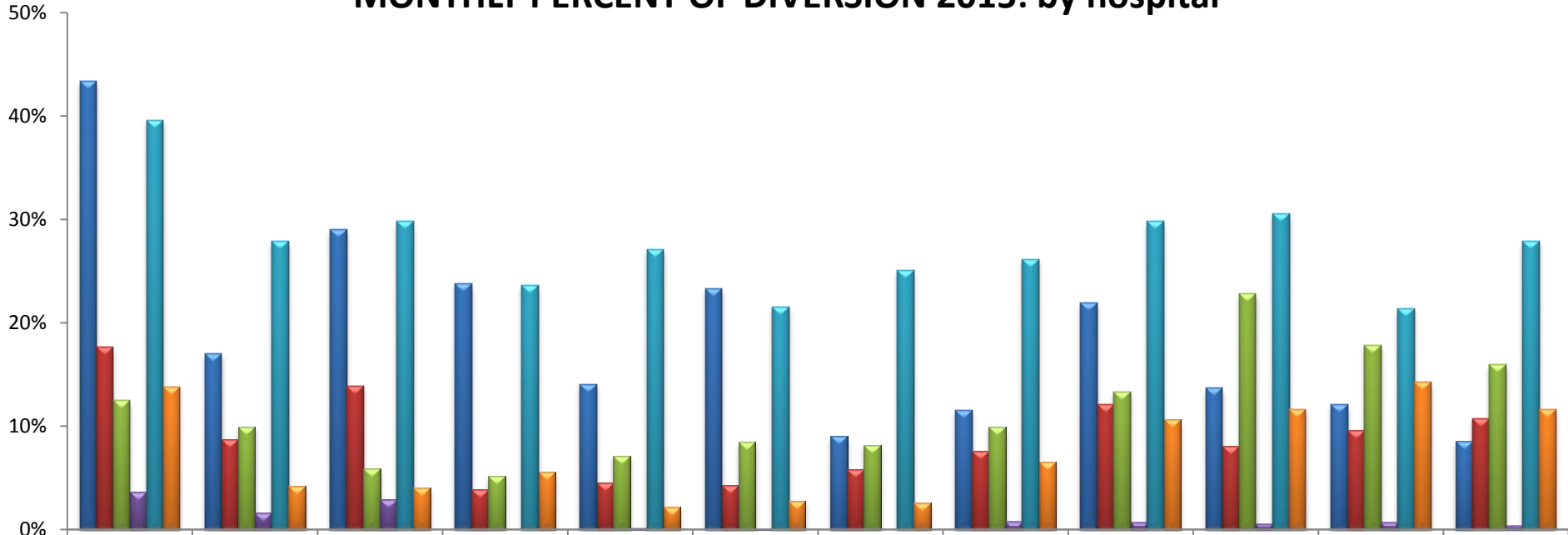
NRH	25%	20%	20%	5%	4%	1%	3%	4%	3%	2%	1%	2%
HWH	19%	3%	3%	0%	1%	0%	1%	1%	1%	0%	0%	1%
KFO	30%	18%	16%	16%	13%	17%	14%	15%	8%	3%	6%	10%
ENH	1%	0%	0%	0%	0%	0%	0%	0%	0%	0%	0%	0%
TRM	21%	6%	12%	3%	3%	1%	1%	0%	1%	1%	1%	1%

CODE	HOSPITAL NAME	CODE	HOSPITAL NAME	CODE	HOSPITAL NAME
NRH	Northridge Hospital Medical Center	KFO	Kaiser, Woodland Hills	TRM	Providence Tarzana Medical Center
HWH	West Hills Medical Center	ENH	Encino Hospital Medical Center		

**HOSPITAL DIVERSION TO 9-1-1 TRAFFIC
due to EMERGENCY DEPARTMENT SATURATION**

SAN FERNANDO VALLEY REGION (n=16 Hospitals)

MONTHLY PERCENT OF DIVERSION 2015: by hospital



	Jan	Feb	Mar	Apr	May	Jun	Jul	Aug	Sep	Oct	Nov	Dec
■ OVM	43%	17%	29%	24%	14%	23%	9%	12%	22%	14%	12%	9%
■ HCH	18%	9%	14%	4%	5%	4%	6%	8%	12%	8%	10%	11%
■ PAC	13%	10%	6%	5%	7%	8%	8%	10%	13%	23%	18%	16%
■ MCP	4%	2%	3%	0%	0%	0%	0%	1%	1%	1%	1%	0%
■ KFP	40%	28%	30%	24%	27%	22%	25%	26%	30%	31%	21%	28%
■ VPH	14%	4%	4%	6%	2%	3%	3%	7%	11%	12%	14%	12%

CODE	HOSPITAL NAME	CODE	HOSPITAL NAME	CODE	HOSPITAL NAME
OVM	Olive View-UCLA Medical Center	PAC	Pacifica Hospital of the Valley	KFP	Kaiser, Panorama City
HCH	Providence Holy Cross Med. Center	MCP	Mission Community Hospital	VPH	Valley Presbyterian Hospital

**HOSPITAL DIVERSION TO 9-1-1 TRAFFIC
due to EMERGENCY DEPARTMENT SATURATION**

SAN FERNANDO VALLEY REGION (n=16 Hospitals)

MONTHLY PERCENT OF DIVERSION 2015: by hospital



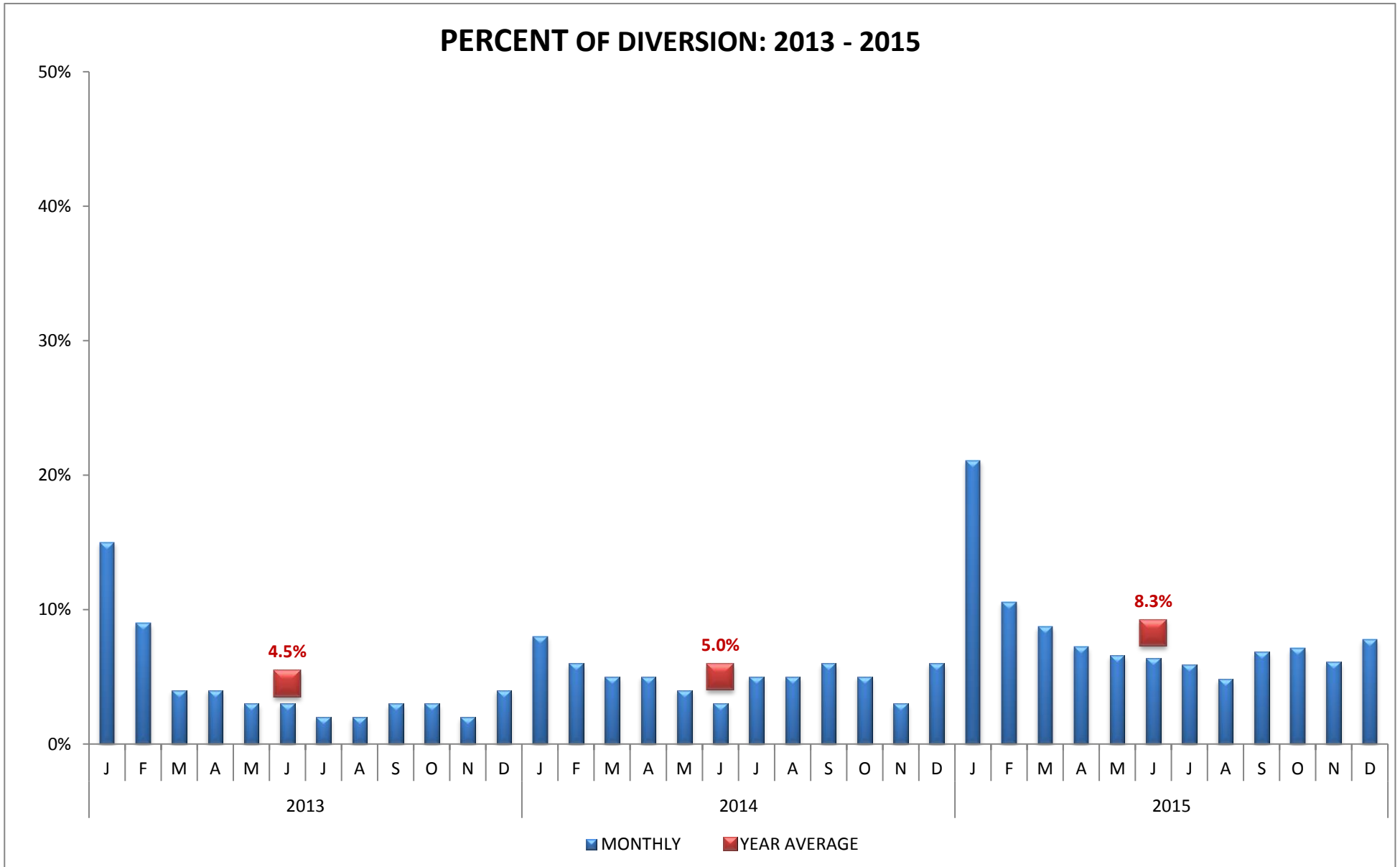
■ SOC	0%	0%	0%	0%	0%	0%	0%	0%	0%	0%	0%	0%
■ SJS	7%	3%	4%	3%	3%	2%	0%	3%	3%	8%	1%	3%
■ GWT	9%	3%	4%	3%	3%	1%	2%	2%	13%	8%	3%	9%
■ GMH	3%	1%	1%	0%	0%	0%	0%	0%	0%	0%	0%	2%
■ VHH	13%	11%	2%	3%	3%	2%	3%	4%	2%	7%	3%	9%

CODE	HOSPITAL NAME	CODE	HOSPITAL NAME	CODE	HOSPITAL NAME
SOC	Sherman Oaks Hospital	GWT	Glendale Adventist Medical Center	VHH	Verdugo Hills Hospital
SJS	Providence St. Joseph Med. Center	GMH	Glendale Memorial Medical Center		

HOSPITAL DIVERSION TO 9-1-1 TRAFFIC
due to EMERGENCY DEPARTMENT SATURATION

SAN GABRIEL VALLEY REGION (n=14 Hospitals)

PERCENT OF DIVERSION: 2013 - 2015

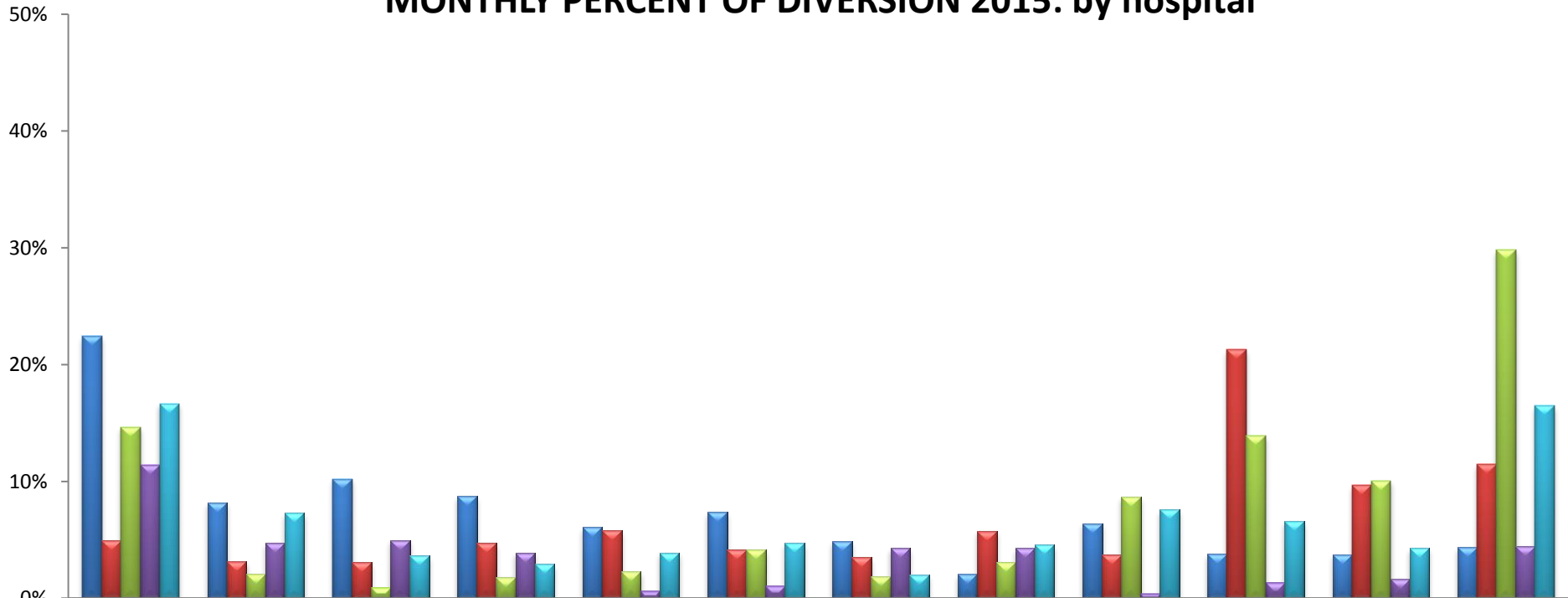


Values represent the AVERAGE incidence of ED Saturation. 100% equals the total number of hours per month.

**HOSPITAL DIVERSION TO 9-1-1 TRAFFIC
due to EMERGENCY DEPARTMENT SATURATION**

SAN GABRIEL VALLEY REGION (n=14 Hospitals)

MONTHLY PERCENT OF DIVERSION 2015: by hospital



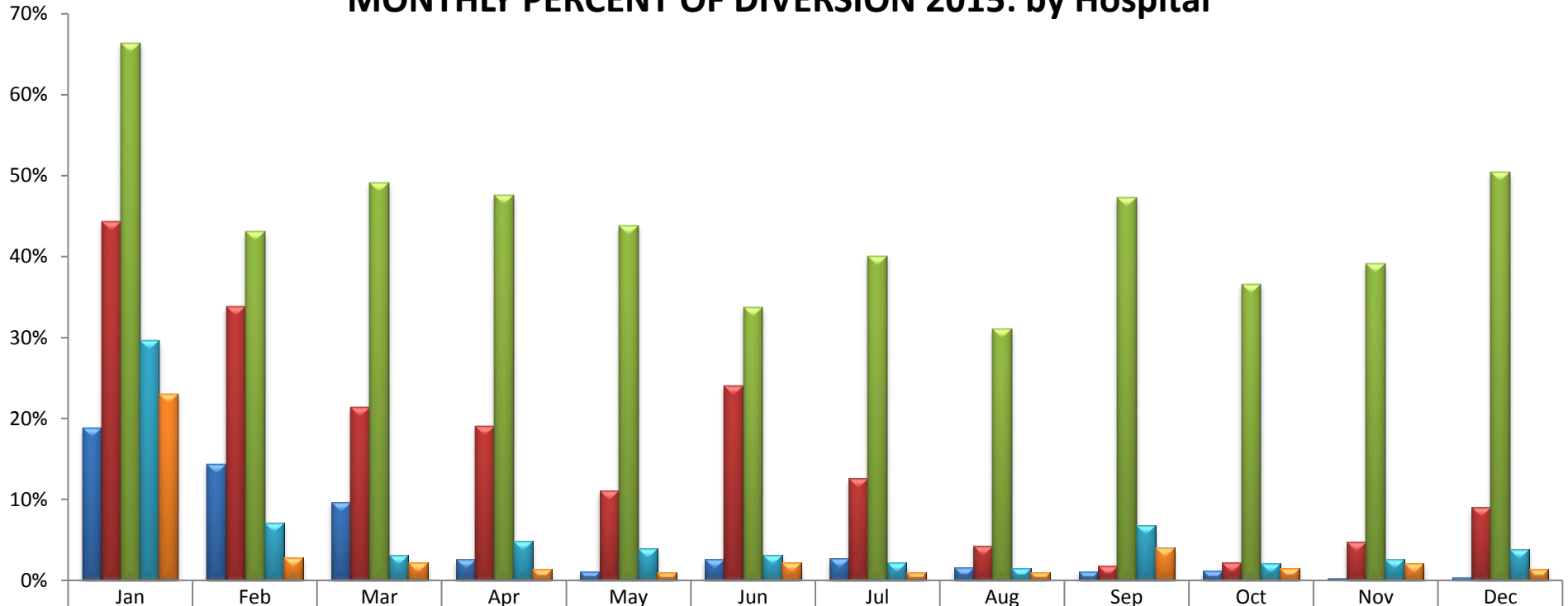
	Jan	Feb	Mar	Apr	May	Jun	Jul	Aug	Sep	Oct	Nov	Dec
ACH	22%	8%	10%	9%	6%	7%	5%	2%	6%	4%	4%	4%
HMH	5%	3%	3%	5%	6%	4%	3%	6%	4%	21%	10%	11%
AMH	15%	2%	1%	2%	2%	4%	2%	3%	9%	14%	10%	30%
SGC	11%	5%	5%	4%	1%	1%	4%	4%	0%	1%	2%	4%
GEM	17%	7%	4%	3%	4%	5%	2%	5%	8%	7%	4%	16%

CODE	HOSPITAL NAME	CODE	HOSPITAL NAME	CODE	HOSPITAL NAME
ACH	Alhambra Community Hospital	AMH	Methodist Hospital of S. California	GEM	Greater El Monte Community Hosp.
HMH	Huntington Memorial Hospital	SGC	San Gabriel Valley Medical Center		

**HOSPITAL DIVERSION TO 9-1-1 TRAFFIC
due to EMERGENCY DEPARTMENT SATURATION**

SAN GABRIEL VALLEY REGION (n=14 Hospitals)

MONTHLY PERCENT OF DIVERSION 2015: by Hospital



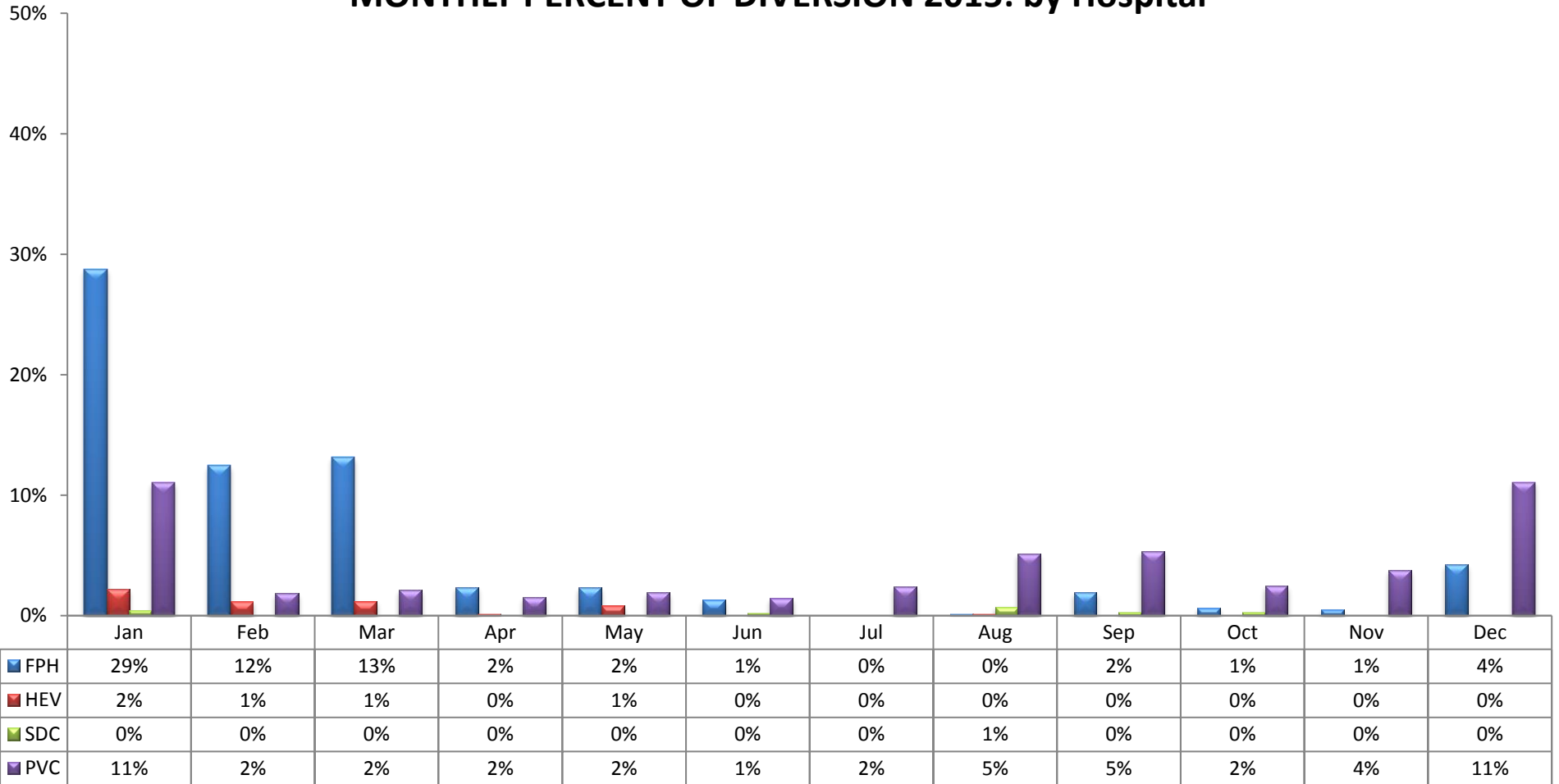
MPH	19%	14%	10%	3%	1%	3%	3%	2%	1%	1%	0%	0%
GAR	44%	34%	21%	19%	11%	24%	13%	4%	2%	2%	5%	9%
KFA	66%	43%	49%	48%	44%	34%	40%	31%	47%	37%	39%	50%
QVH	30%	7%	3%	5%	4%	3%	2%	2%	7%	2%	3%	4%
ICH	23%	3%	2%	1%	1%	2%	1%	1%	4%	2%	2%	1%

CODE	HOSPITAL NAME	CODE	HOSPITAL NAME	CODE	HOSPITAL NAME
MPH	Monterey Park Hospital	KFA	Kaiser, Baldwin Park	ICH	Citrus Valley, Intercommunity
GAR	Garfield Medical Center	QVH	Citrus Valley, Queen of the Valley		

**HOSPITAL DIVERSION TO 9-1-1 TRAFFIC
due to EMERGENCY DEPARTMENT SATURATION**

SAN GABRIEL VALLEY REGION (n=14 Hospitals)

MONTHLY PERCENT OF DIVERSION 2015: by Hospital

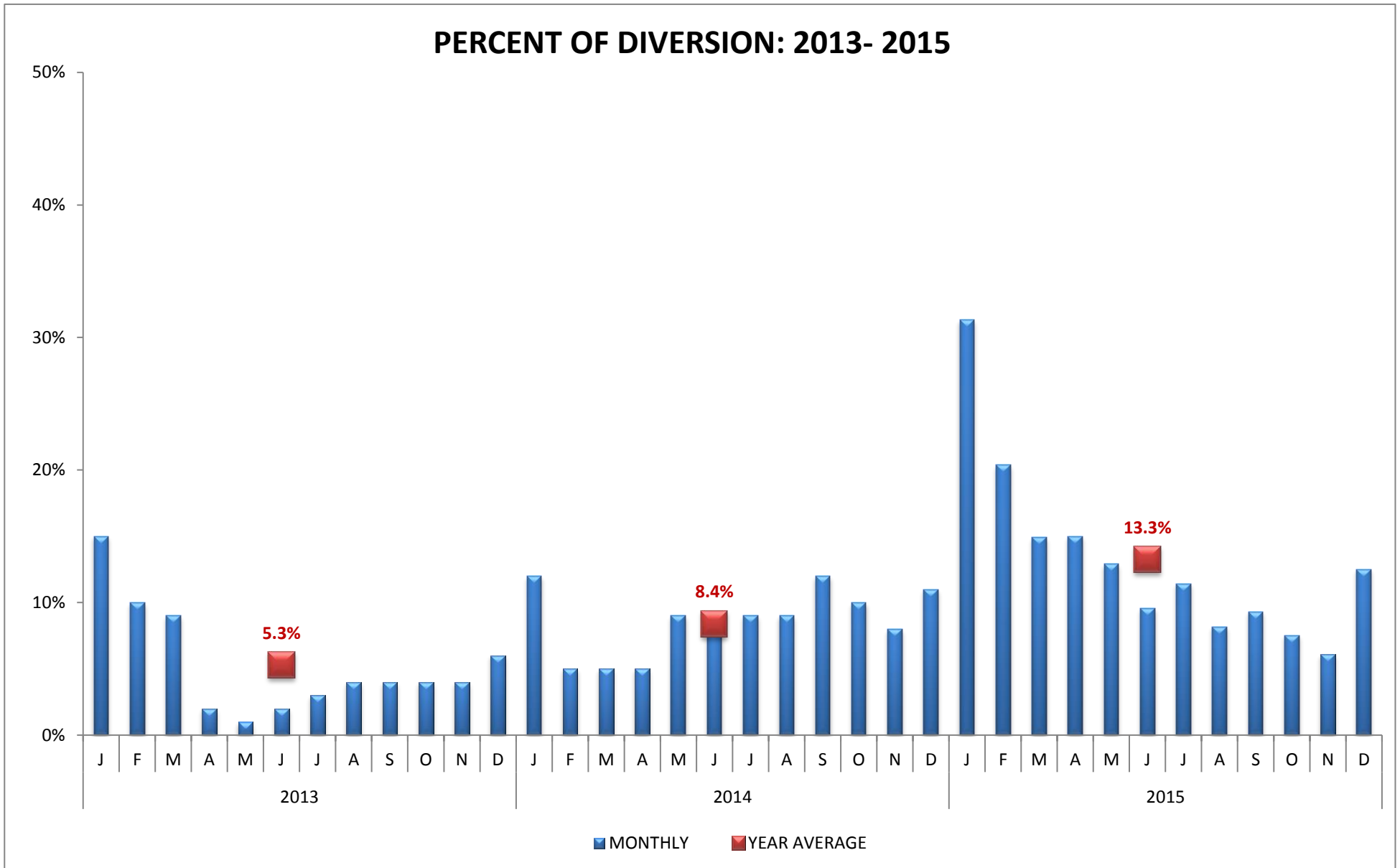


CODE	HOSPITAL NAME	CODE	HOSPITAL NAME
FPH	Foothill Presbyterian Hospital	SDC	San Dimas Community Hospital
HEV	East Valley Hospital	PVC	Pomona Valley Hospital Medical Center

HOSPITAL DIVERSION TO 9-1-1 TRAFFIC
due to EMERGENCY DEPARTMENT SATURATION

EAST REGION (n=9 Hospitals)

PERCENT OF DIVERSION: 2013- 2015

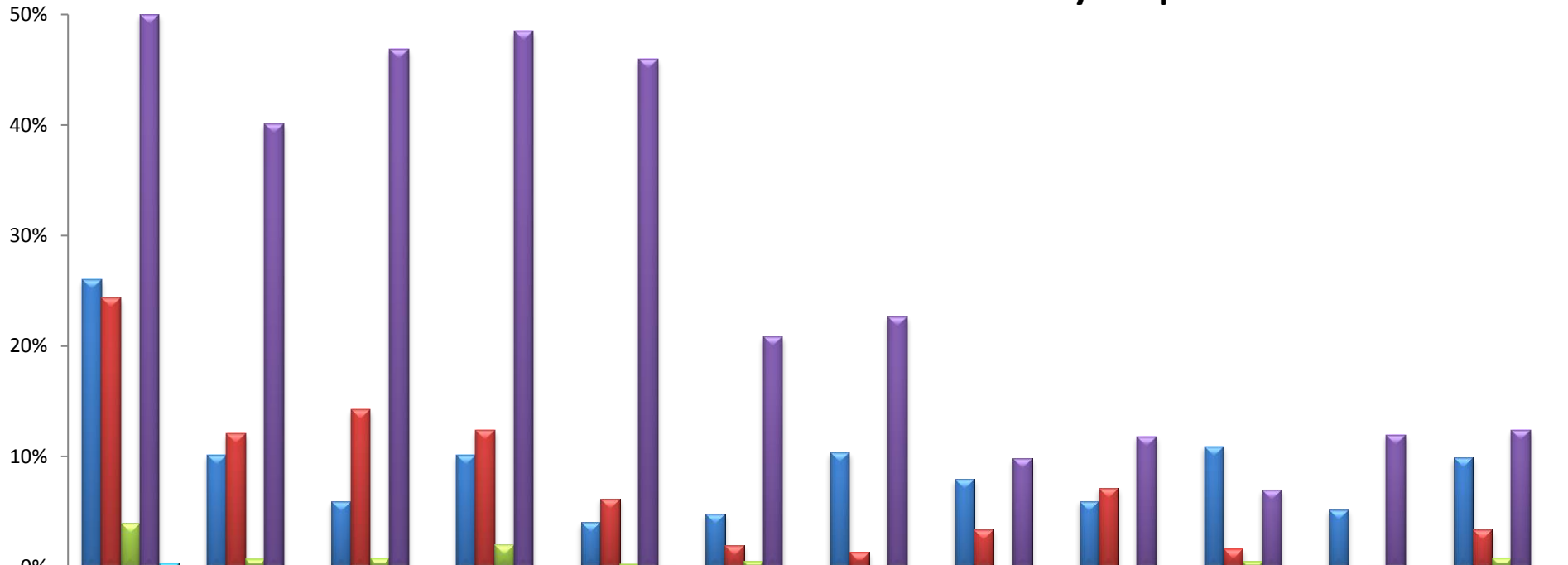


Values represent the AVERAGE incidence of ED Saturation. 100% equals the total number of hours per month.

**HOSPITAL DIVERSION TO 9-1-1 TRAFFIC
due to EMERGENCY DEPARTMENT SATURATION**

EAST REGION (n=9 Hospitals)

MONTHLY PERCENT OF DIVERSION 2015: by hospital



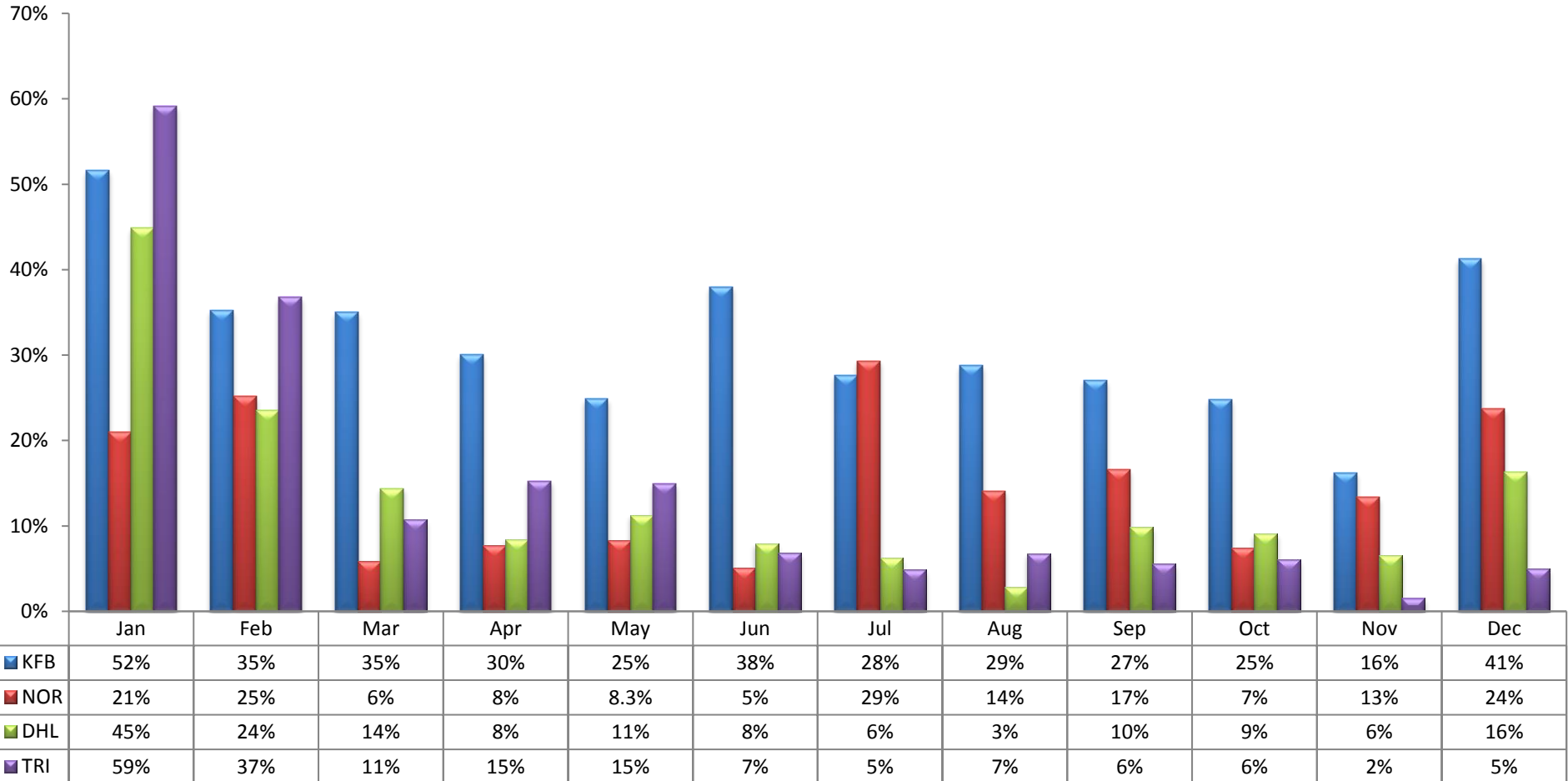
	Jan	Feb	Mar	Apr	May	Jun	Jul	Aug	Sep	Oct	Nov	Dec
BEV	26%	10%	6%	10%	4%	5%	10%	8%	6%	11%	5%	10%
PIH	24%	12%	14%	12%	6%	2%	1%	3%	7%	2%	0%	3%
WHH	4%	1%	1%	2%	0%	1%	0%	0%	0%	1%	0%	1%
DCH	50%	40%	47%	49%	46%	21%	23%	10%	12%	7%	12%	12%
CPM	0%	0%	0%	0%	0%	0%	0%	0%	0%	0%	0%	0%

CODE	HOSPITAL NAME	CODE	HOSPITAL NAME	CODE	HOSPITAL NAME
BEV	Beverly Hospital	WHH	Whittier Hospital Medical Center	CPM	Coast Plaza Doctors Hospital
PIH	PIH Health Whittier	DCH	PIH Health Downey		

**HOSPITAL DIVERSION TO 9-1-1 TRAFFIC
due to EMERGENCY DEPARTMENT SATURATION**

EAST REGION (n=9 Hospitals)

MONTHLY PERCENT OF DIVERSION 2015: by hospital

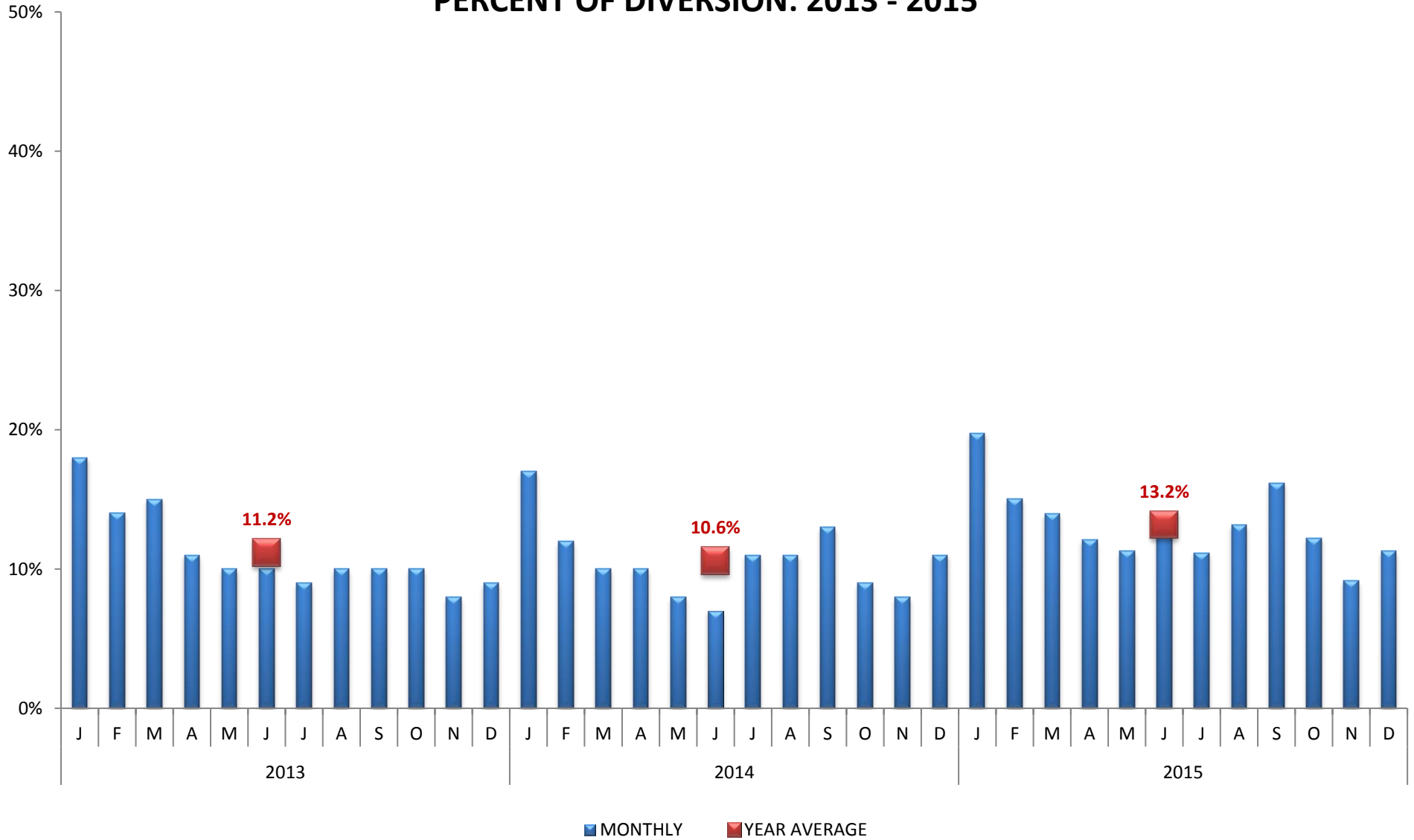


CODE	HOSPITAL NAME	CODE	HOSPITAL NAME
KFB	Kaiser Foundation, Downey	DHL	Lakewood Regional Medical Center
NOR	LA Community of Norwalk	TRI	Tri-City Regional Medical Center

HOSPITAL DIVERSION TO 9-1-1 TRAFFIC
due to EMERGENCY DEPARTMENT SATURATION

METRO REGION (n=12 Hospitals)

PERCENT OF DIVERSION: 2013 - 2015

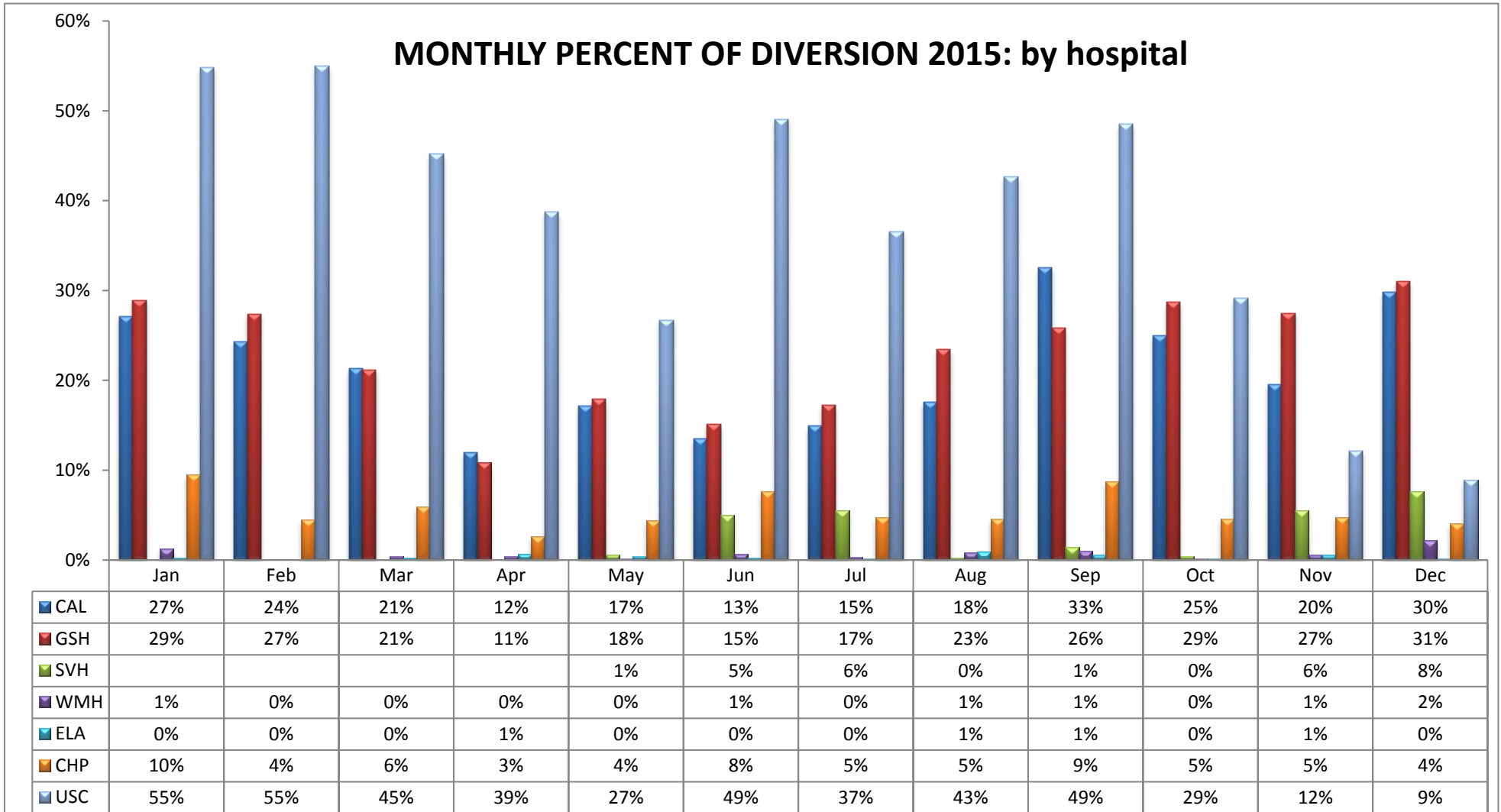


Values represent the AVERAGE incidence of ED Saturation. 100% equals the total number of hours per month.

**HOSPITAL DIVERSION TO 9-1-1 TRAFFIC
due to EMERGENCY DEPARTMENT SATURATION**

METRO REGION (n=12 Hospitals)

MONTHLY PERCENT OF DIVERSION 2015: by hospital



CODE	HOSPITAL NAME	CODE	HOSPITAL NAME	CODE	HOSPITAL Name
CAL**	California Hospital Medical Center	WMH***	White Memorial Medical Center	USC	LAC+USC Medical Center
GSH**	Good Samaritan Hospital	ELA***	East Los Angeles Doctors Hospital		
SVH**	St. Vincent Medical Center	CHP***	Community Hospital of Huntington Park		

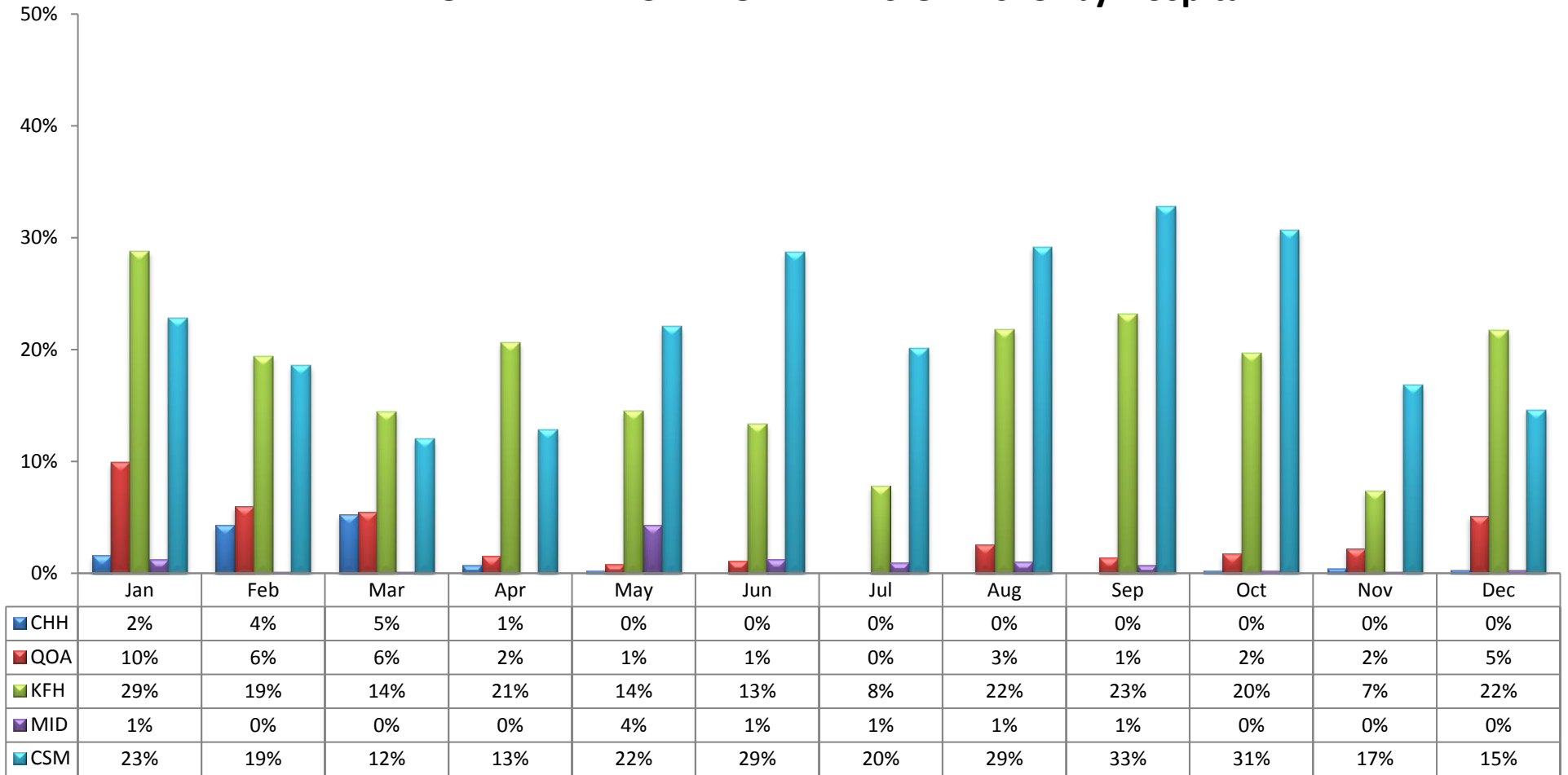
** Combined Service Area - may divert to each other

*** Combined Service Area - ELA & CHP may divert to WMH

**HOSPITAL DIVERSION TO 9-1-1 TRAFFIC
due to EMERGENCY DEPARTMENT SATURATION**

METRO REGION (n=12 Hospitals)

MONTHLY PERCENT OF DIVERSION 2015: by Hospital

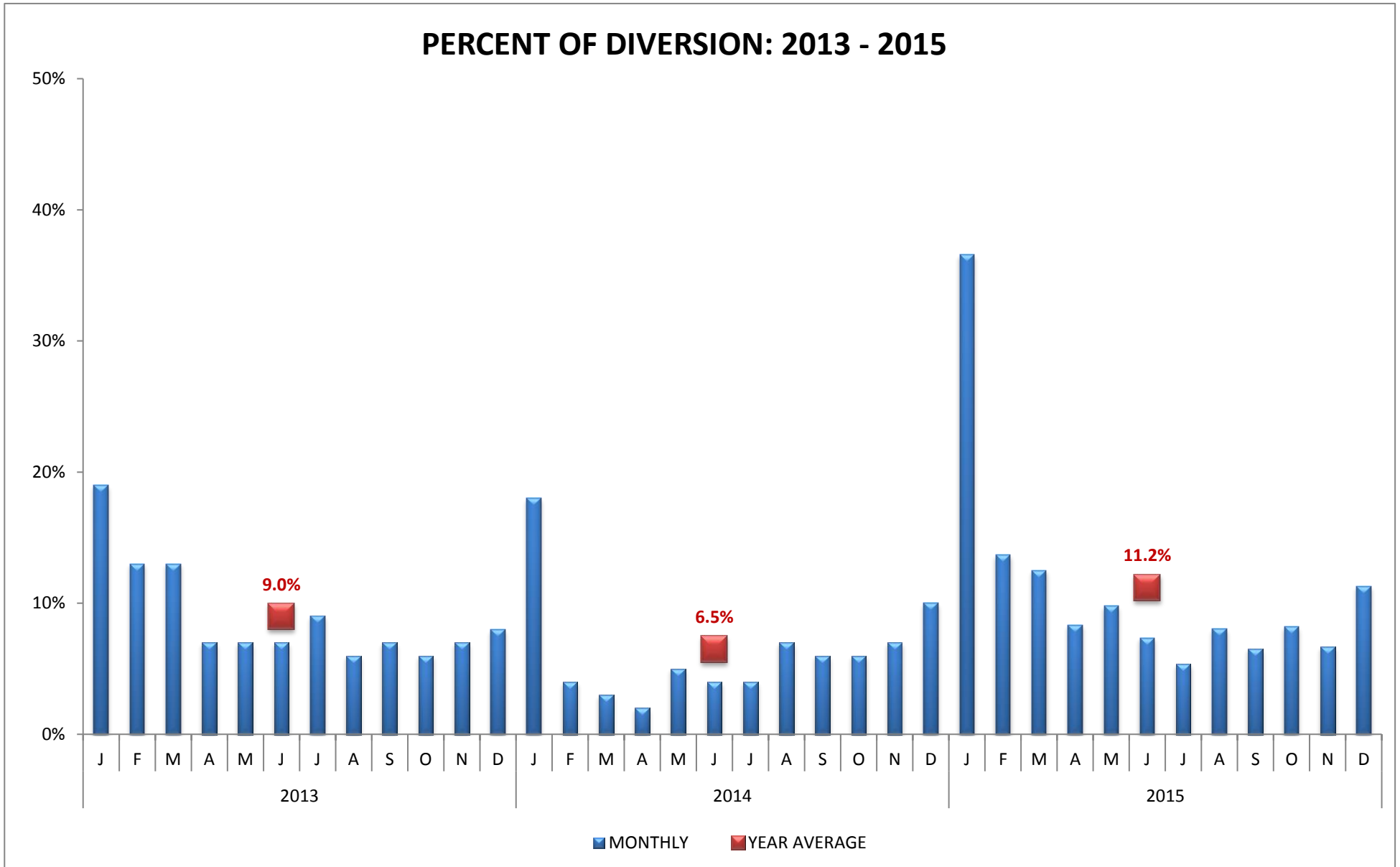


CODE	HOSPITAL NAME	CODE	HOSPITAL NAME	CODE	HOSPITAL NAME
CHH	Childrens Hospital of Los Angeles	KFL	Kaiser, Los Angeles	CSM	Cedars Sinai Medical Center
QOA	Hollywood Presbyterian Medical Center	MID	Olympia Medical Center		

HOSPITAL DIVERSION TO 9-1-1 TRAFFIC
due to EMERGENCY DEPARTMENT SATURATION

WEST REGION (n=6 Hospitals)

PERCENT OF DIVERSION: 2013 - 2015

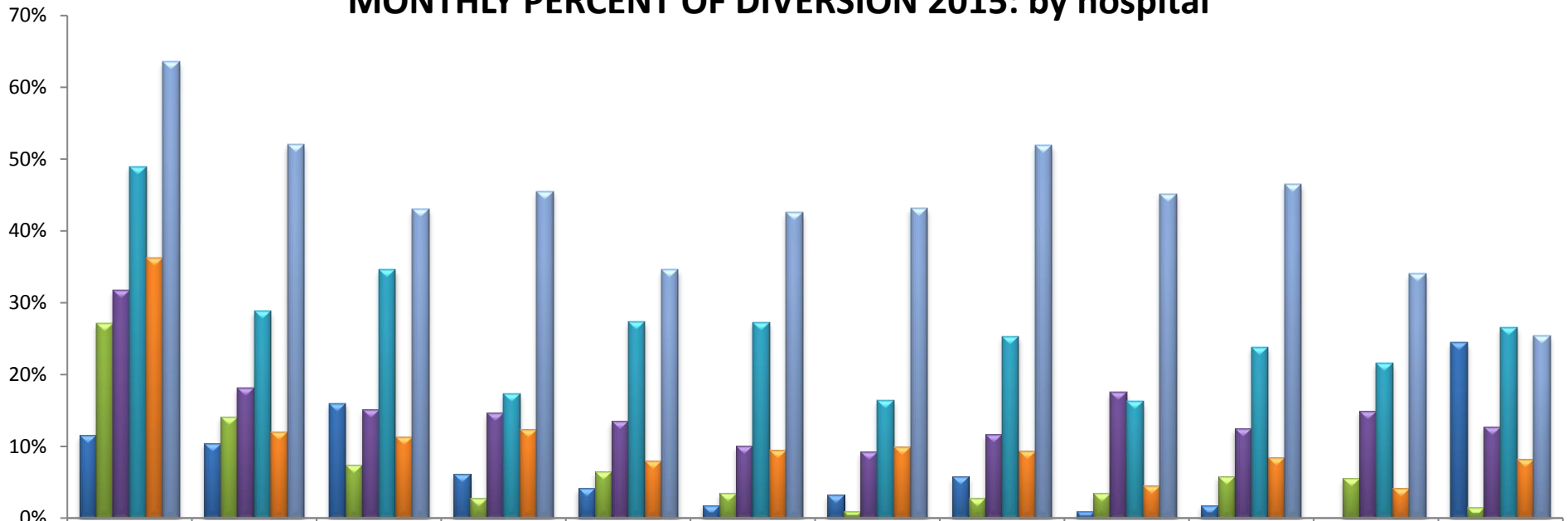


Values represent the AVERAGE incidence of ED Saturation. 100% equals the total number of hours per month.

**HOSPITAL DIVERSION TO 9-1-1 TRAFFIC
due to EMERGENCY DEPARTMENT SATURATION**

WEST REGION (n=6 Hospitals)

MONTHLY PERCENT OF DIVERSION 2015: by hospital



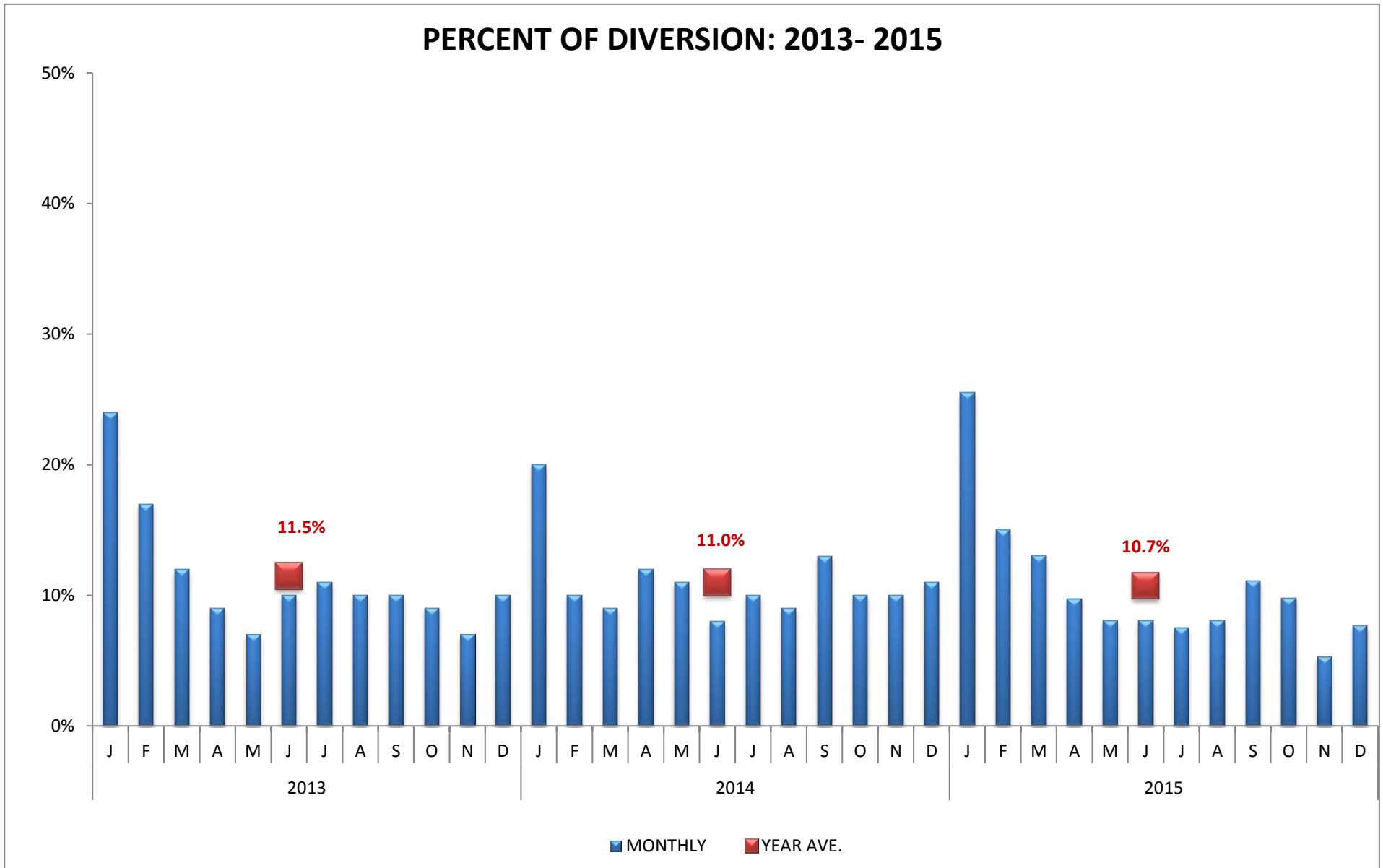
	Jan	Feb	Mar	Apr	May	Jun	Jul	Aug	Sep	Oct	Nov	Dec
BMC	12%	10%	16%	6%	4%	2%	3%	6%	1%	2%	0%	24%
DFM	27%	14%	7%	3%	7%	4%	1%	3%	3%	6%	6%	1%
KFW	32%	18%	15%	15%	14%	10%	9%	12%	18%	13%	15%	13%
SJH	49%	29%	35%	17%	27%	27%	16%	25%	16%	24%	22%	27%
SMH	36%	12%	11%	12%	8%	9%	10%	9%	5%	8%	4%	8%
UCL	64%	52%	43%	46%	35%	43%	43%	52%	45%	46%	34%	25%

CODE	HOSPITAL NAME	CODE	HOSPITAL NAME	CODE	HOSPITAL NAME
BMC	S. California Hospital at Culver City	KFW	Kaiser, West Los Angeles	SMH	Santa Monica/UCLA Medical Center
DFM	Marina Del Rey Hospital	SJH	St. John's Hospital & Health Center	UCL	UCLA Medical Center

HOSPITAL DIVERSION TO 9-1-1 TRAFFIC
due to EMERGENCY DEPARTMENT SATURATION

SOUTH REGION (n=13 Hospitals)

PERCENT OF DIVERSION: 2013- 2015

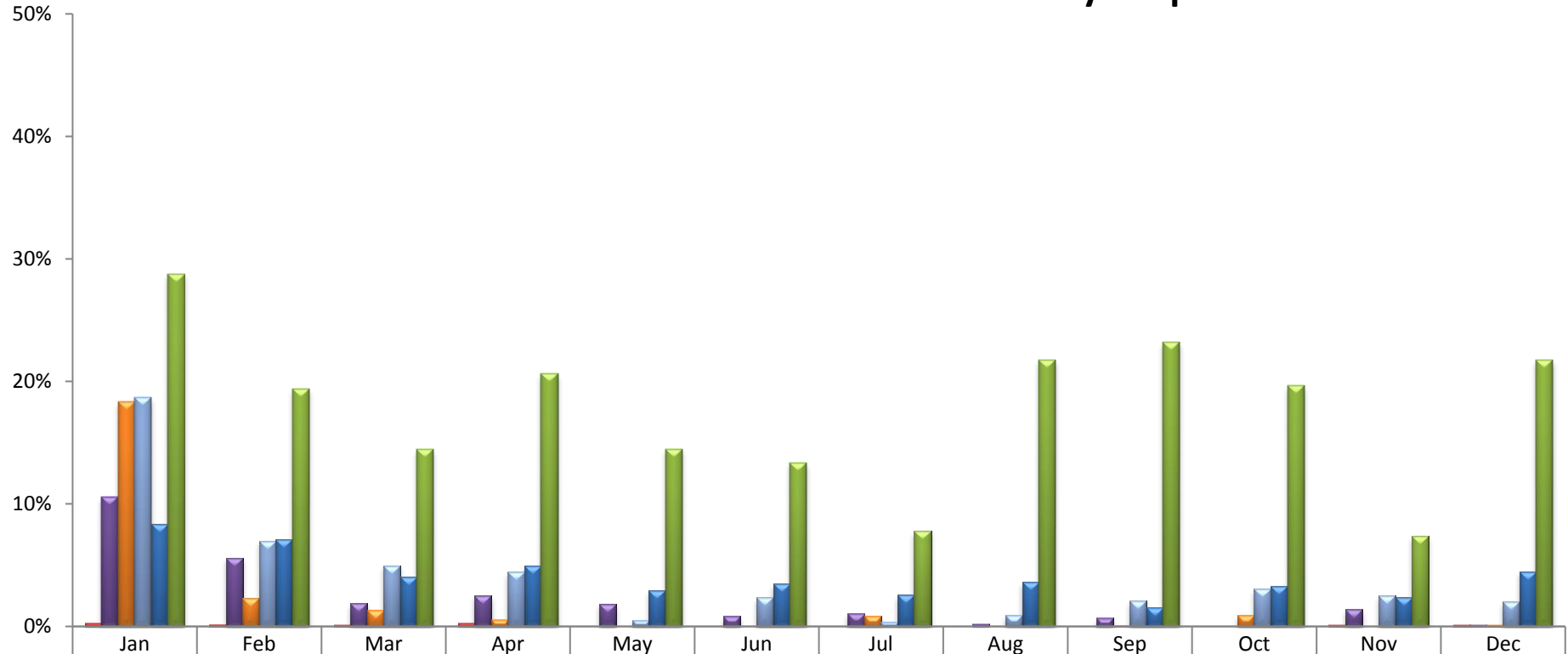


Values represent the AVERAGE incidence of ED Saturation. 100% equals the total number of hours per month.

**HOSPITAL DIVERSION TO 9-1-1 TRAFFIC
due to EMERGENCY DEPARTMENT SATURATION**

SOUTH REGION (n=13 Hospitals)

MONTHLY PERCENT OF DIVERSION 2015: by hospital



CNT	0%	0%	0%	0%	0%	0%	0%	0%	0%	0%	0%	0%
MHG	11%	6%	2%	3%	2%	1%	1%	0%	1%	0%	1%	0%
LCM	18%	2%	1%	1%	0%	0%	1%	0%	0%	1%	0%	0%
TOR	19%	7%	5%	4%	1%	2%	0%	1%	2%	3%	3%	2%
SPP	8%	7%	4%	5%	3%	3%	3%	4%	1.5%	3%	2%	4%
KFH	29%	19%	14%	21%	14%	13%	8%	22%	23%	20%	7%	22%

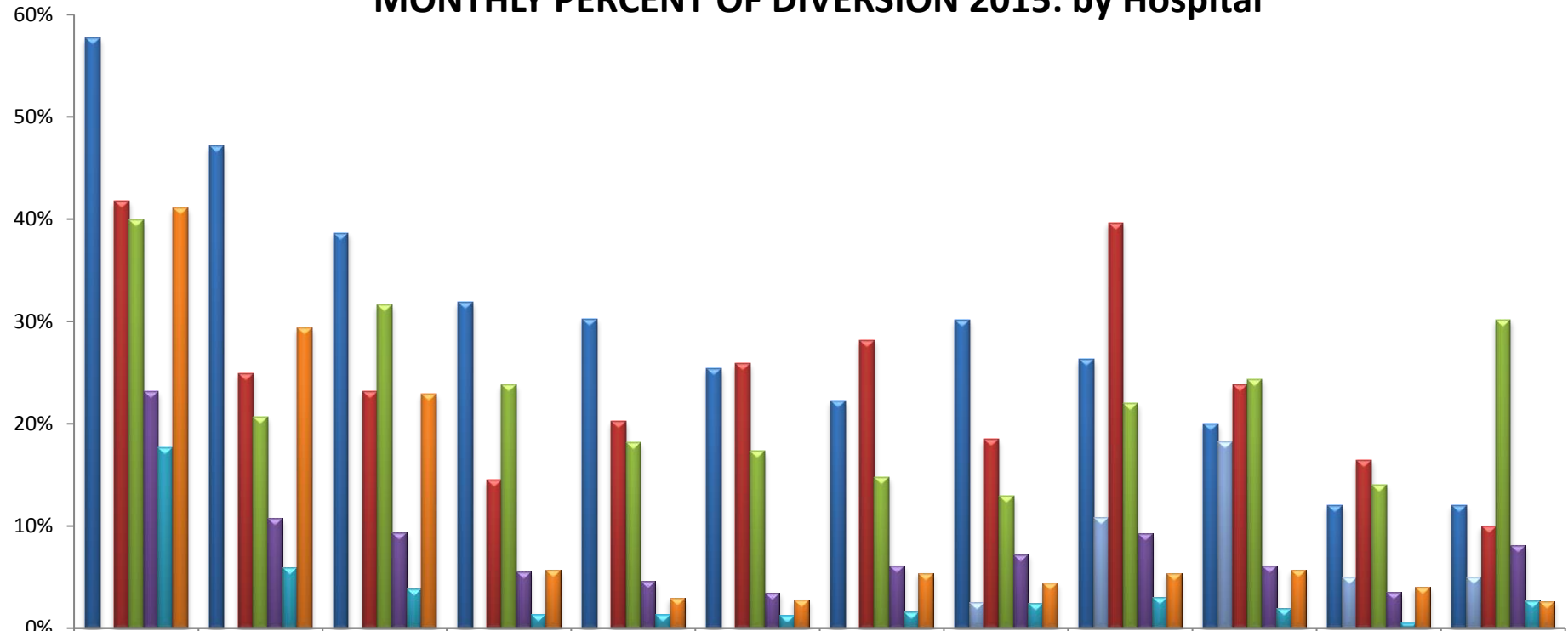
CODE	HOSPITAL NAME	CODE	HOSPITAL NAME	CODE	HOSPITAL NAME
CNT*	Centinela Hospital Medical Center	LCM	Providence Little Company of Mary-Torrance	SPP	Providence Little Company of Mary-San Pedro
MHG*	Memorial Hospital of Gardena	TOR	Torrance Memorial Medical Center	KFH	Kaiser Foundation - South Bay

* Service Area Hospital

**HOSPITAL DIVERSION TO 9-1-1 TRAFFIC
due to EMERGENCY DEPARTMENT SATURATION**

SOUTH REGION (n=13 Hospitals)

MONTHLY PERCENT OF DIVERSION 2015: by Hospital



CODE	HOSPITAL NAME	CODE	HOSPITAL NAME	CODE	HOSPITAL NAME
SFM	St. Francis Medical Center	HGH	Harbor-UCLA Medical Center	PLB	College Medical Center
MLK	MLK Community Hospital	LBM	Long Beach Memorial Medical Center	LBC	Community Hospital of Long Beach
				SMM	St. Mary Medical Center

Note: Catalina Island Medical Center = 0% diversion