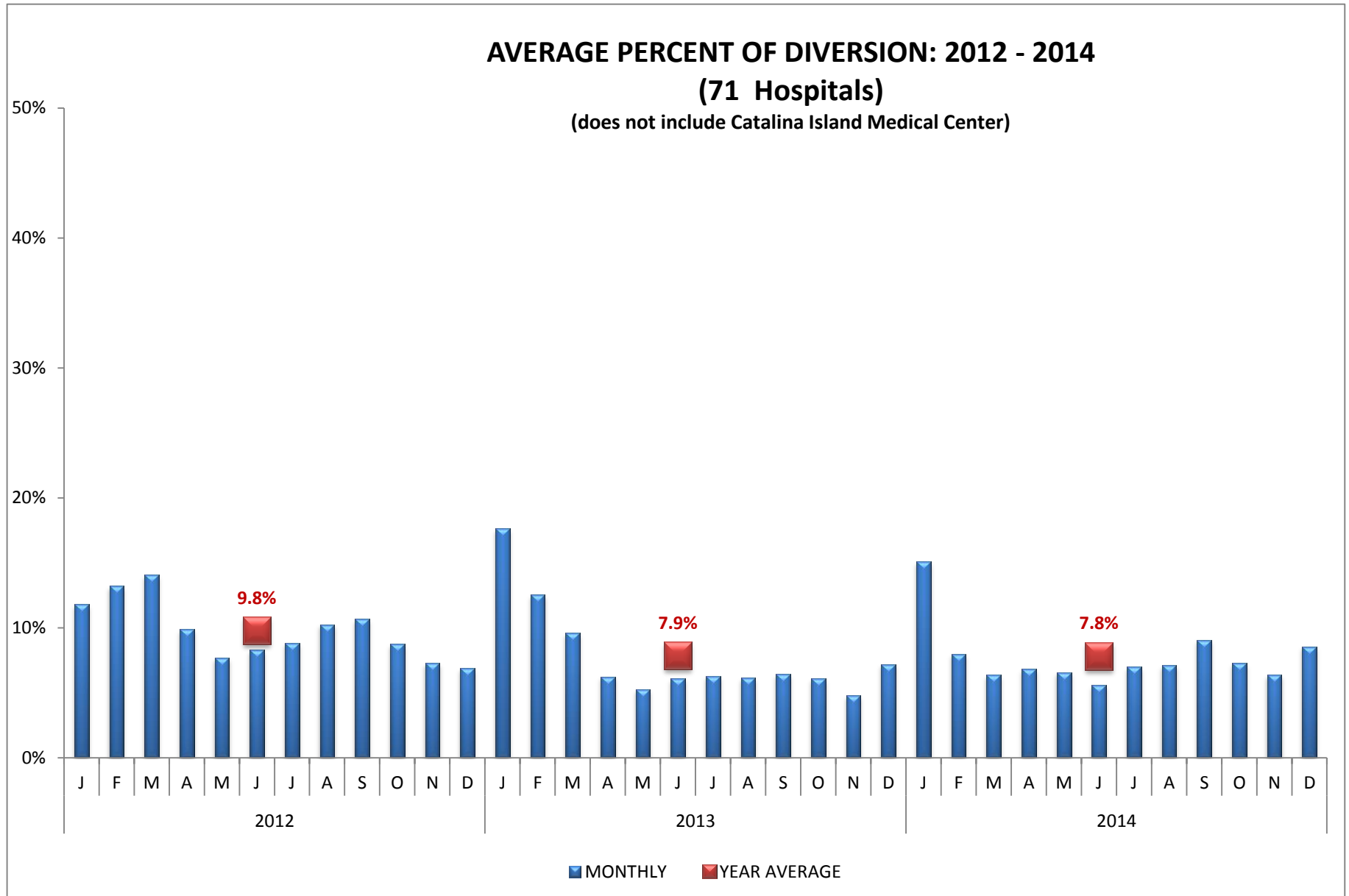


HOSPITAL DIVERSION TO 9-1-1 TRAFFIC
due TO EMERGENCY DEPARTMENT SATURATION

LOS ANGELES COUNTY 9-1-1 RECEIVING HOSPITALS (n=71 Hospitals)

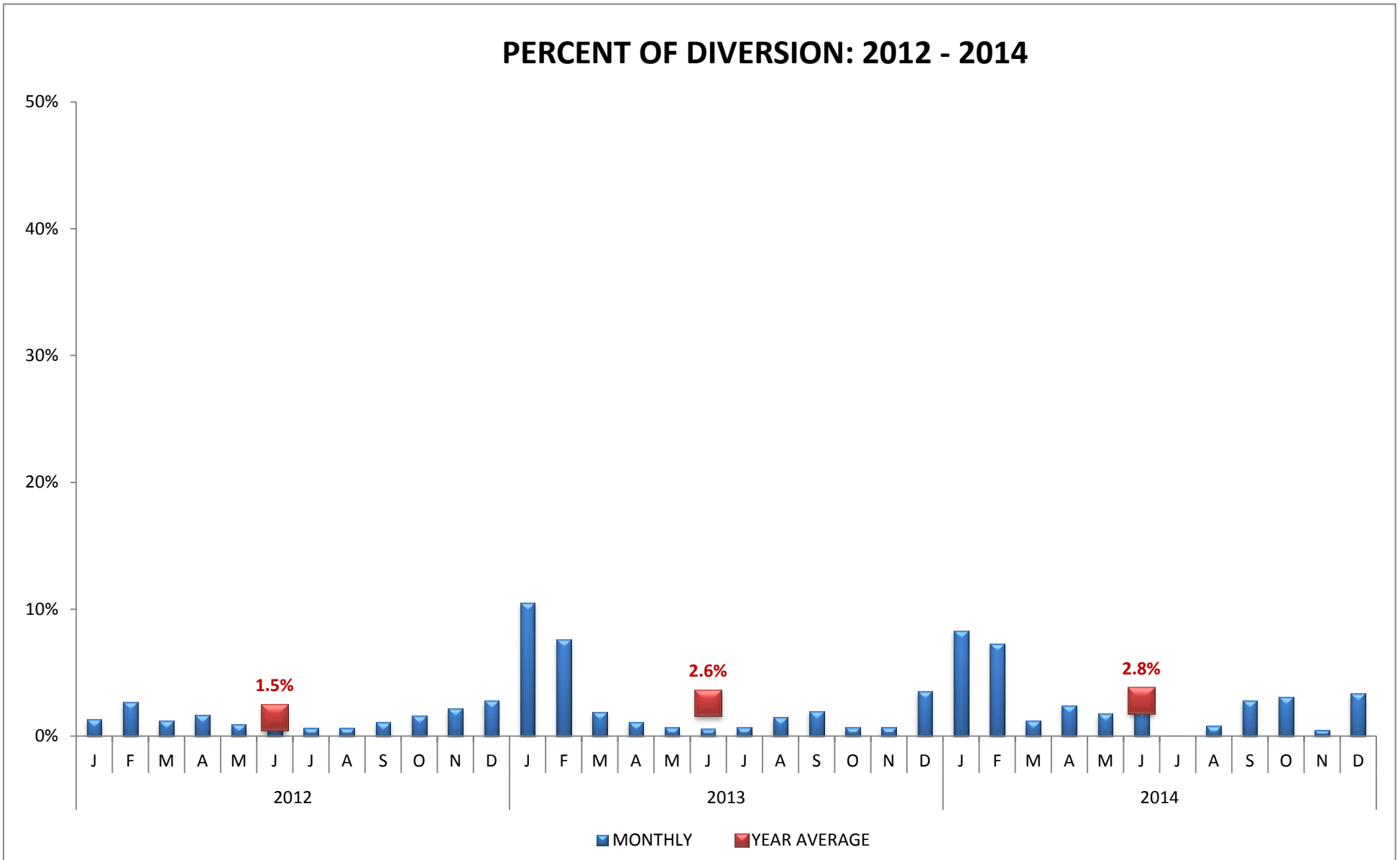


Values represent the AVERAGE incidence of ED Saturation. 100% equals the total number of hours per month.

HOSPITAL DIVERSION TO 9-1-1 TRAFFIC
 due to EMERGENCY DEPARTMENT SATURATION

ANTELOPE VALLEY - NEWHALL REGION (n=3 Hospitals)

PERCENT OF DIVERSION: 2012 - 2014

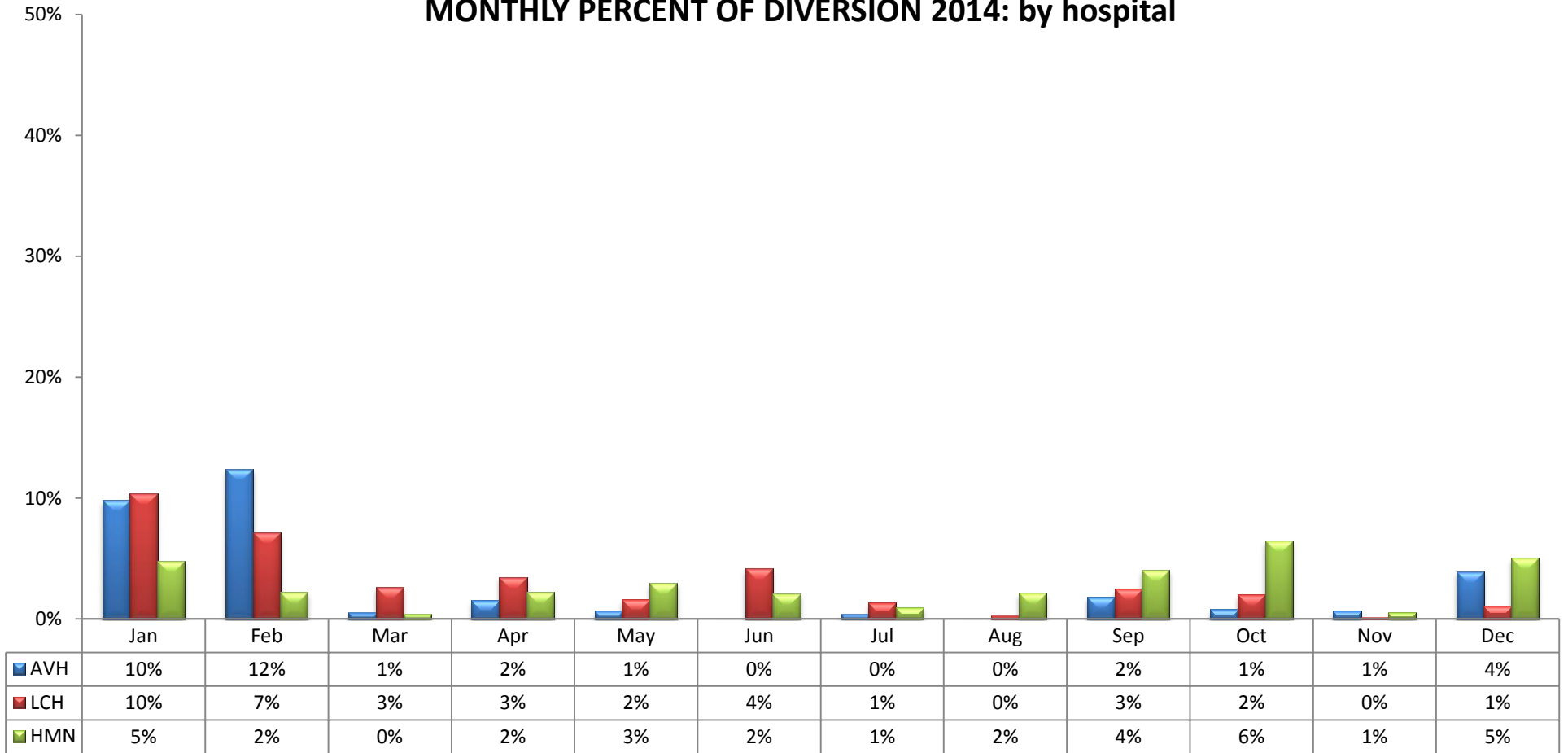


Values represent the AVERAGE incidence of ED Saturation. 100% equals the total number of hours per month.

**HOSPITAL DIVERSION TO 9-1-1 TRAFFIC
due to EMERGENCY DEPARTMENT SATURATION**

ANTELOPE VALLEY - NEWHALL REGION (n=3 Hospitals)

MONTHLY PERCENT OF DIVERSION 2014: by hospital

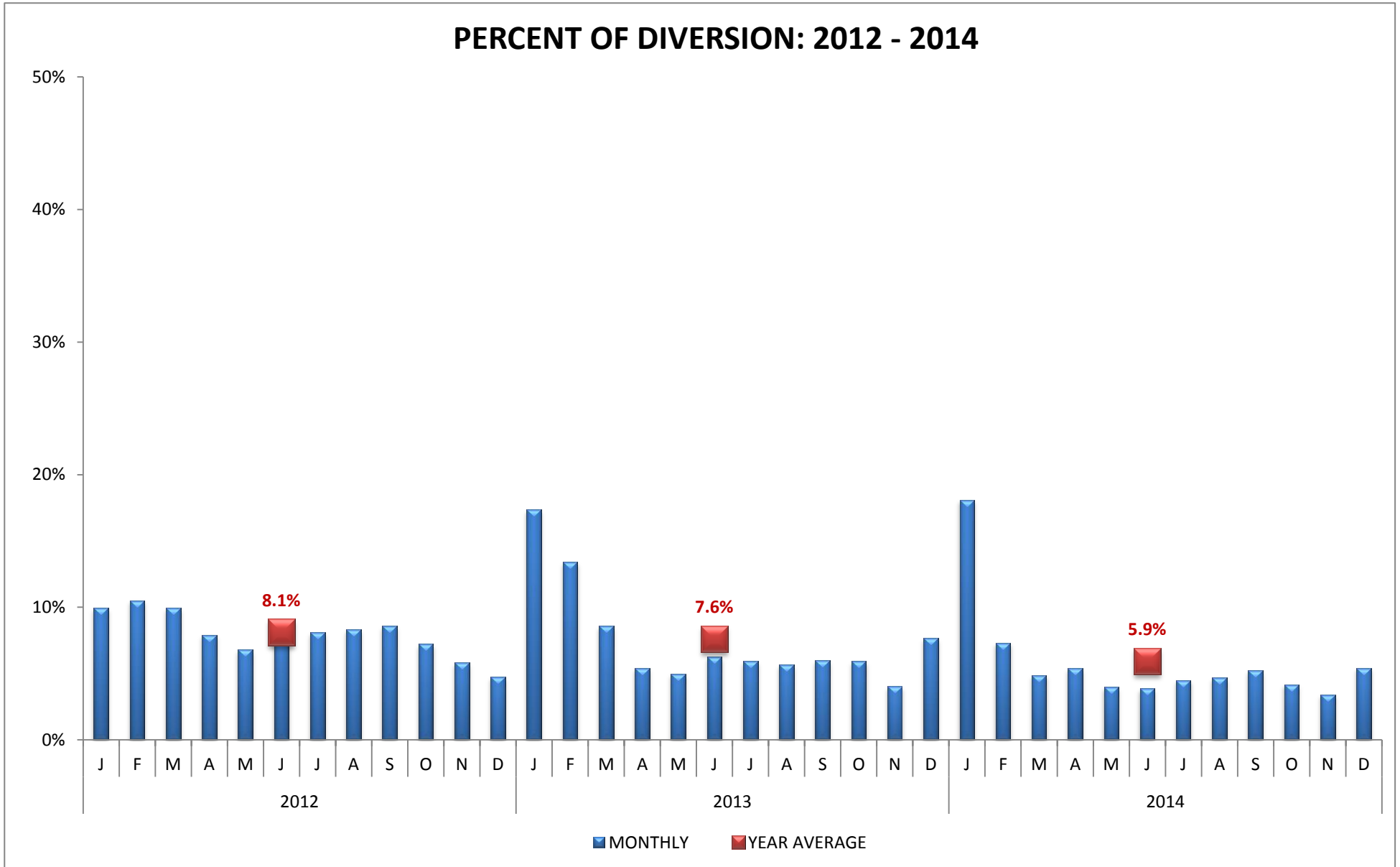


CODE	HOSPITAL NAME	CODE	HOSPITAL NAME	CODE	HOSPITAL NAME
AVH	Antelope Valley Hospital	LCH	Palmdale Regional Medical Center	HMN	Henry Mayo Newhall Memorial Hospital

HOSPITAL DIVERSION TO 9-1-1 TRAFFIC
due to EMERGENCY DEPARTMENT SATURATION

SAN FERNANDO VALLEY REGION (n=16 Hospitals)

PERCENT OF DIVERSION: 2012 - 2014

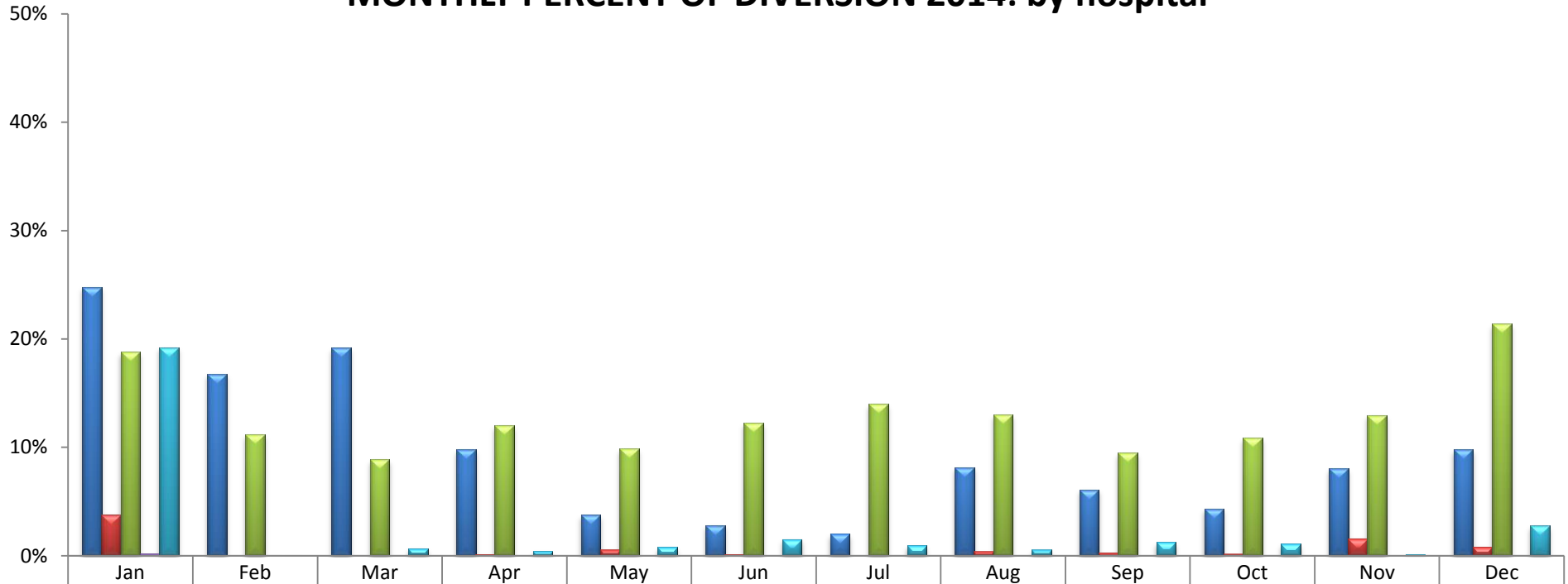


Values represent the AVERAGE incidence of ED Saturation. 100% equals the total number of hours per month.

**HOSPITAL DIVERSION TO 9-1-1 TRAFFIC
due to EMERGENCY DEPARTMENT SATURATION**

SAN FERNANDO VALLEY REGION (n=16 Hospitals)

MONTHLY PERCENT OF DIVERSION 2014: by hospital



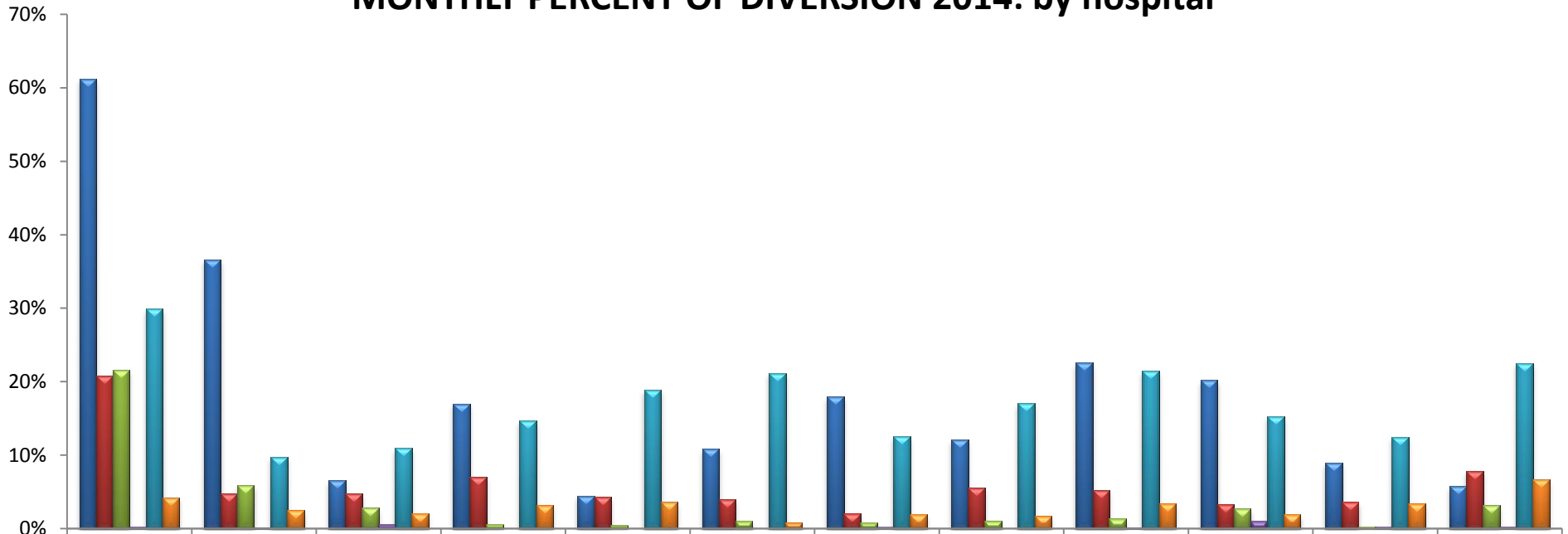
NRH	25%	17%	19%	10%	4%	3%	2%	8%	6%	4%	8%	10%
HWH	4%	0%	0%	0%	1%	0%	0%	0%	0%	0%	2%	1%
KFO	19%	11%	9%	12%	10%	12%	14%	13%	9%	11%	13%	21%
ENH	0%	0%	0%	0%	0%	0%	0%	0%	0%	0%	0%	0%
TRM	19%	0%	1%	0%	1%	2%	1%	1%	1%	1%	0%	3%

CODE	HOSPITAL NAME	CODE	HOSPITAL NAME	CODE	HOSPITAL NAME
NRH	Northridge Hospital Medical Center	KFO	Kaiser, Woodland Hills	TRM	Providence Tarzana Medical Center
HWH	West Hills Medical Center	ENH	Encino Hospital Medical Center		

**HOSPITAL DIVERSION TO 9-1-1 TRAFFIC
due to EMERGENCY DEPARTMENT SATURATION**

SAN FERNANDO VALLEY REGION (n=16 Hospitals)

MONTHLY PERCENT OF DIVERSION 2014: by hospital



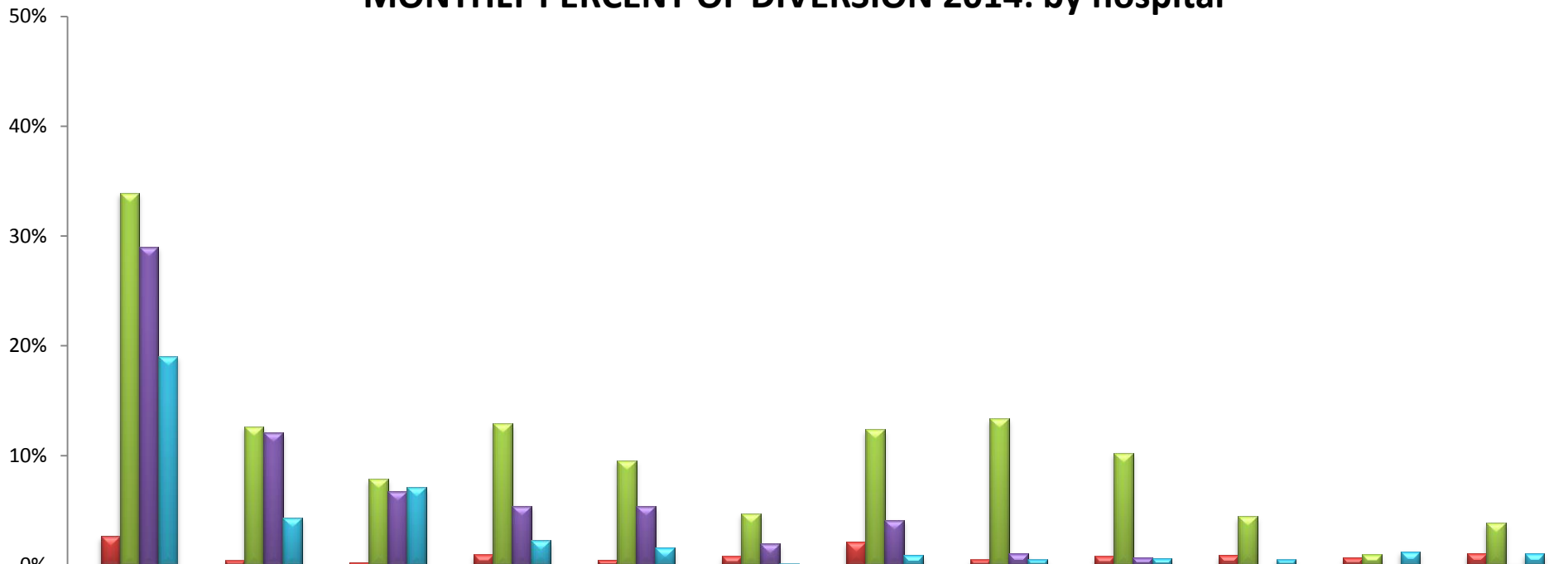
	Jan	Feb	Mar	Apr	May	Jun	Jul	Aug	Sep	Oct	Nov	Dec
■ OVM	61%	37%	7%	17%	4%	11%	18%	12%	23%	20%	9%	6%
■ HCH	21%	5%	5%	7%	4%	4%	2%	6%	5%	3%	4%	8%
■ PAC	22%	6%	3%	1%	0%	1%	1%	1%	1%	3%	0%	3%
■ MCP	0%	0%	1%	0%	0%	0%	0%	0%	0%	1%	0%	0%
■ KFP	30%	10%	11%	15%	19%	21%	13%	17%	21%	15%	12%	22%
■ VPH	4%	3%	2%	3%	4%	1%	2%	2%	3%	2%	3%	7%

CODE	HOSPITAL NAME	CODE	HOSPITAL NAME	CODE	HOSPITAL NAME
OVM	Olive View-UCLA Medical Center	PAC	Pacifica Hospital of the Valley	KFP	Kaiser, Panorama City
HCH	Providence Holy Cross Med. Center	MCP	Mission Community Hospital	VPH	Valley Presbyterian Hospital

**HOSPITAL DIVERSION TO 9-1-1 TRAFFIC
due to EMERGENCY DEPARTMENT SATURATION**

SAN FERNANDO VALLEY REGION (n=16 Hospitals)

MONTHLY PERCENT OF DIVERSION 2014: by hospital



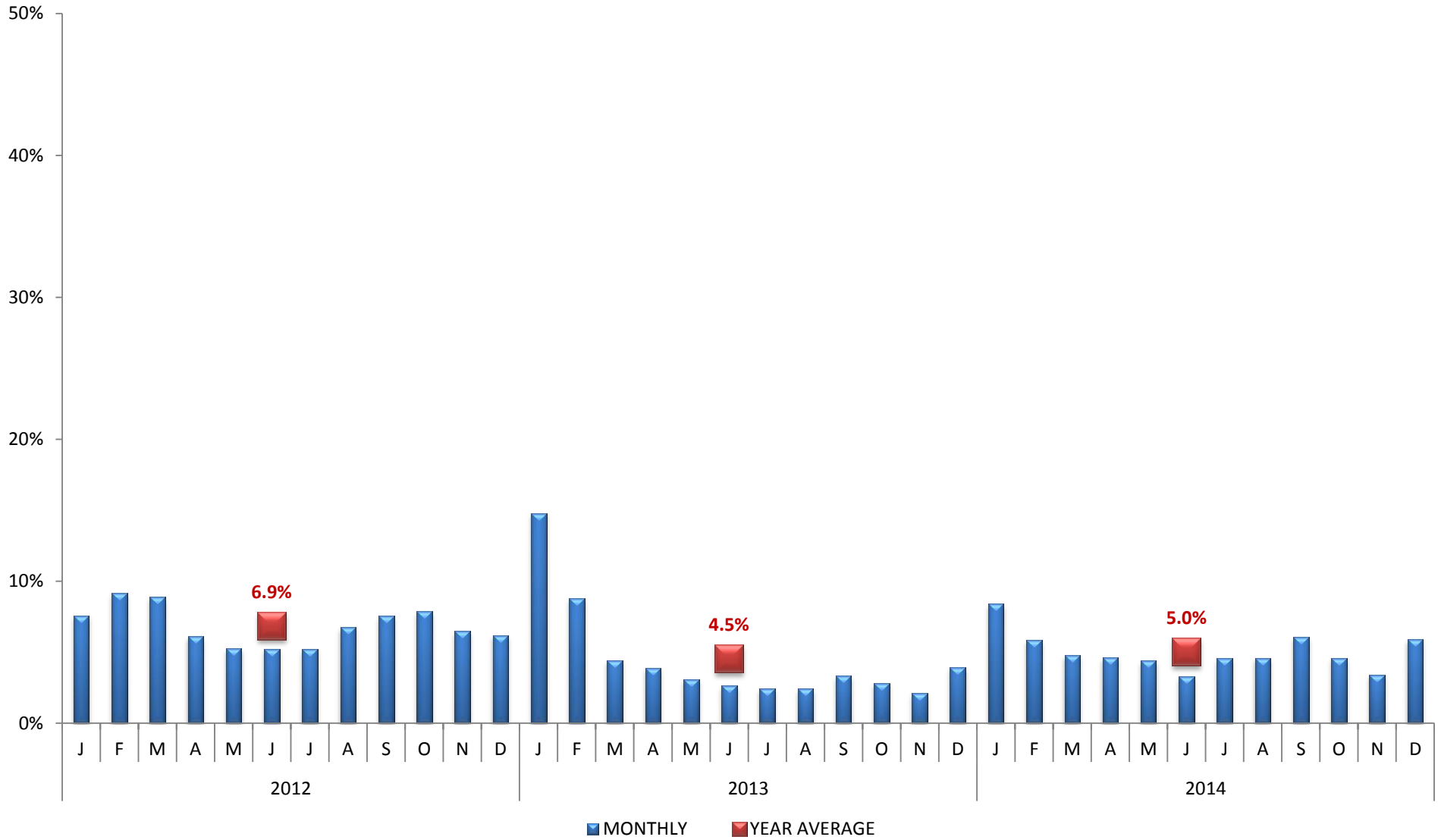
■ SOC	0%	0%	0%	0%	0%	0%	0%	0%	0%	0%	0%	0%
■ SJS	3%	0%	0%	1%	1%	1%	2%	1%	1%	1%	1%	1%
■ GWT	34%	13%	8%	13%	10%	5%	12%	13%	10%	4%	1%	4%
■ GMH	29%	12%	7%	5%	5%	2%	4%	1%	1%	0%	0%	0%
■ VHH	19%	4%	7%	2%	2%	0%	1%	1%	1%	1%	1%	1%

CODE	HOSPITAL NAME	CODE	HOSPITAL NAME	CODE	HOSPITAL NAME
SOC	Sherman Oaks Hospital	GWT	Glendale Adventist Medical Center	VHH	Verdugo Hills Hospital
SJS	Providence St. Joseph Med. Center	GMH	Glendale Memorial Medical Center		

HOSPITAL DIVERSION TO 9-1-1 TRAFFIC
 due to EMERGENCY DEPARTMENT SATURATION

SAN GABRIEL VALLEY REGION (n=14 Hospitals)

PERCENT OF DIVERSION: 2012 - 2014

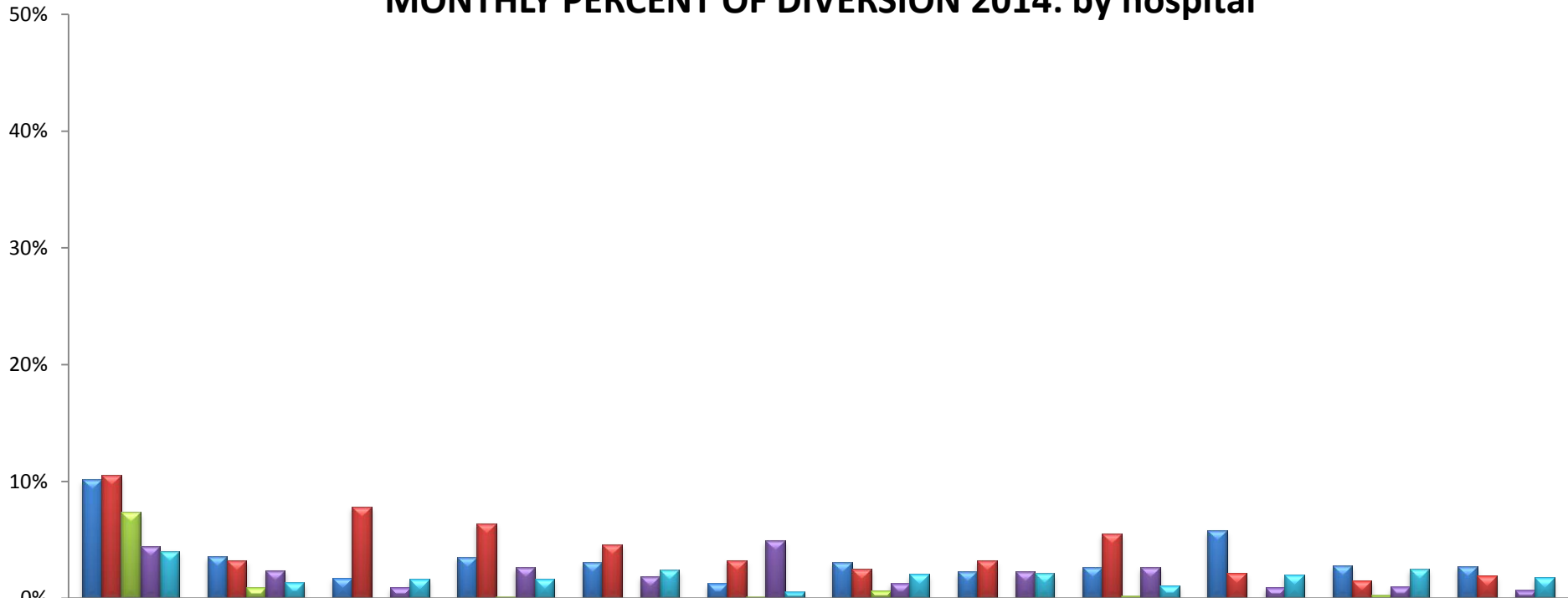


Values represent the AVERAGE incidence of ED Saturation. 100% equals the total number of hours per month.

**HOSPITAL DIVERSION TO 9-1-1 TRAFFIC
due to EMERGENCY DEPARTMENT SATURATION**

SAN GABRIEL VALLEY REGION (n=14 Hospitals)

MONTHLY PERCENT OF DIVERSION 2014: by hospital



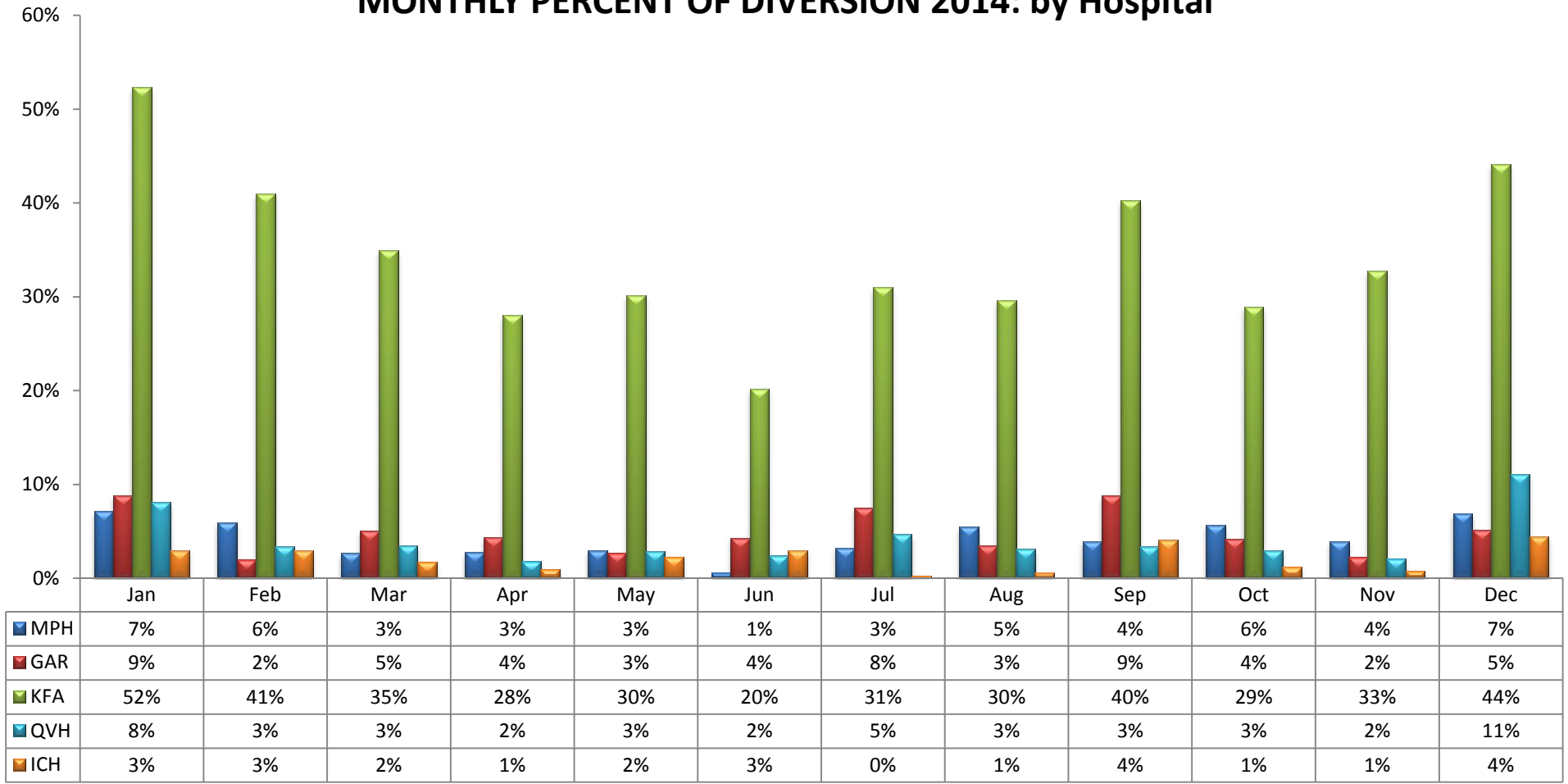
ACH	10%	4%	2%	4%	3%	1%	3%	2%	3%	6%	3%	3%
HMH	11%	3%	8%	6%	5%	3%	3%	3%	6%	2%	2%	2%
AMH	7%	1%	0%	0%	0%	0%	1%	0%	0%	0%	0%	0%
SGC	4%	2%	1%	3%	2%	5%	1%	2%	3%	1%	1%	1%
GEM	4%	1%	2%	2%	2%	1%	2%	2%	1%	2%	3%	2%

CODE	HOSPITAL NAME	CODE	HOSPITAL NAME	CODE	HOSPITAL NAME
ACH	Alhambra Community Hospital	AMH	Methodist Hospital of S. California	GEM	Greater El Monte Community Hosp.
HMH	Huntington Memorial Hospital	SGC	San Gabriel Valley Medical Center		

**HOSPITAL DIVERSION TO 9-1-1 TRAFFIC
due to EMERGENCY DEPARTMENT SATURATION**

SAN GABRIEL VALLEY REGION (n=14 Hospitals)

MONTHLY PERCENT OF DIVERSION 2014: by Hospital

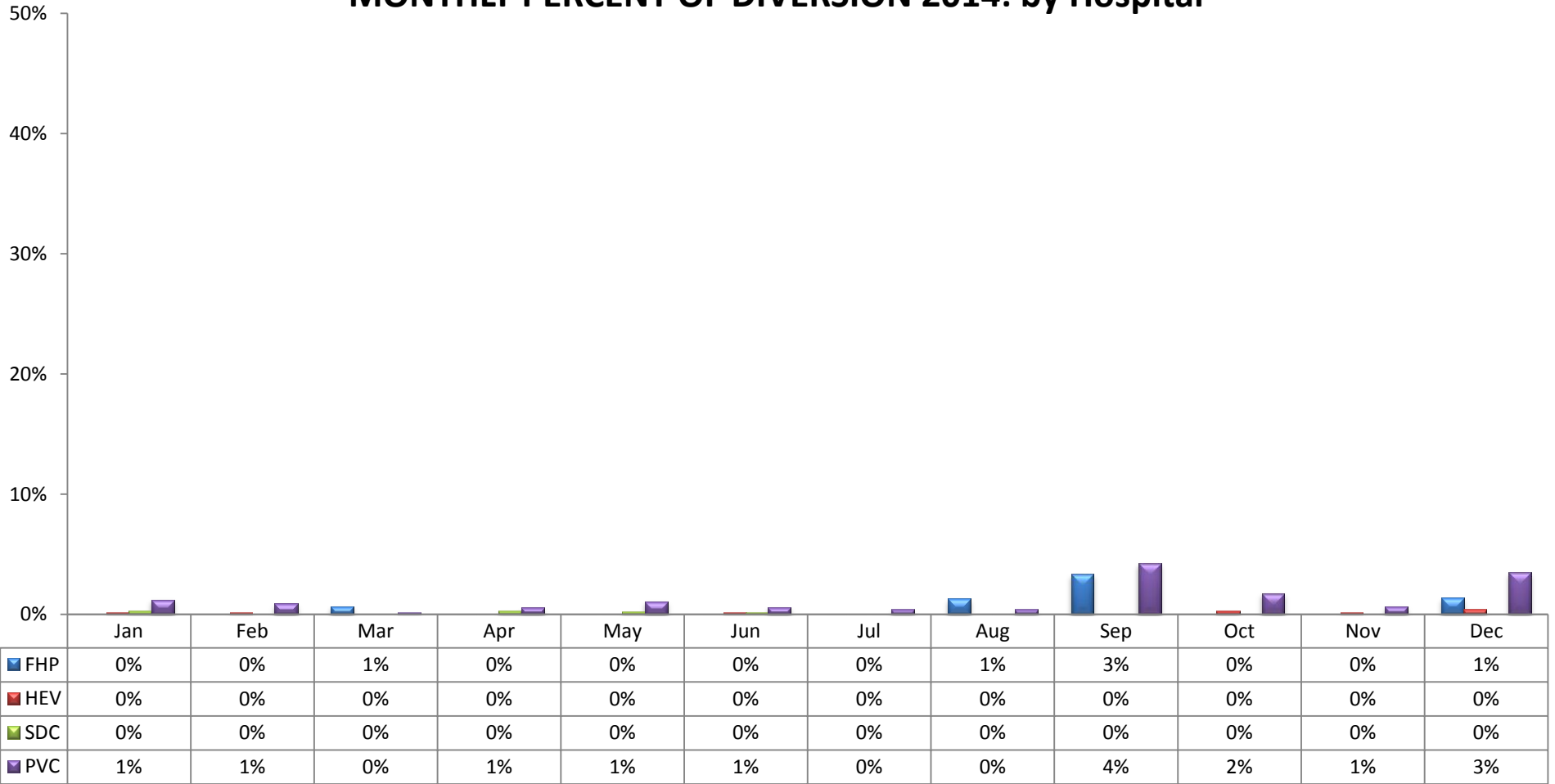


CODE	HOSPITAL NAME	CODE	HOSPITAL NAME	CODE	HOSPITAL NAME
MPH	Monterey Park Hospital	KFA	Kaiser, Baldwin Park	ICH	Citrus Valley, Intercommunity
GAR	Garfield Medical Center	QVH	Citrus Valley, Queen of the Valley		

**HOSPITAL DIVERSION TO 9-1-1 TRAFFIC
due to EMERGENCY DEPARTMENT SATURATION**

SAN GABRIEL VALLEY REGION (n=14 Hospitals)

MONTHLY PERCENT OF DIVERSION 2014: by Hospital

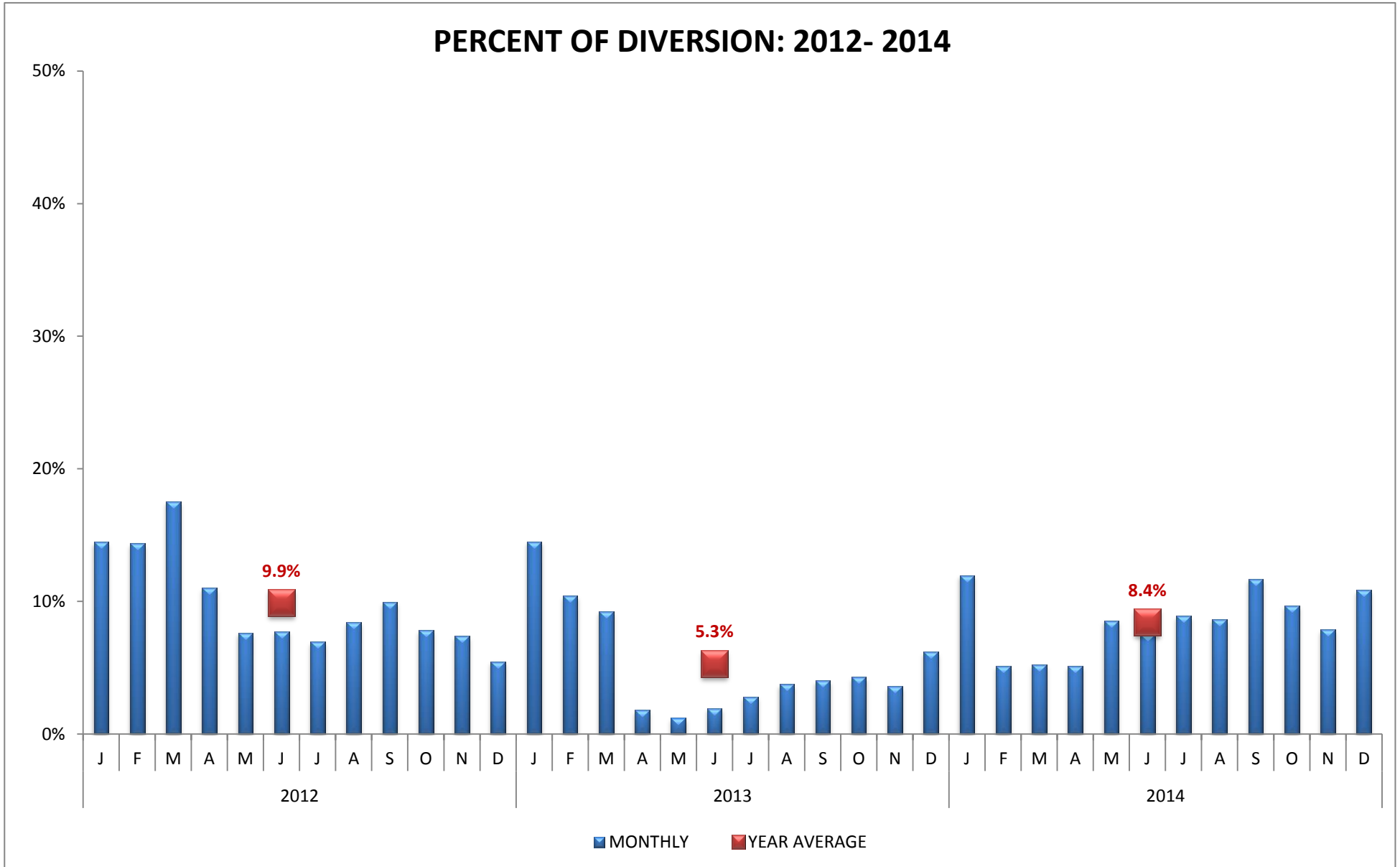


CODE	HOSPITAL NAME	CODE	HOSPITAL NAME
FPH	Foothill Presbyterian Hospital	SDC	San Dimas Community Hospital
HEV	East Valley Hospital	PVC	Pomona Valley Hospital Medical Center

HOSPITAL DIVERSION TO 9-1-1 TRAFFIC
due to EMERGENCY DEPARTMENT SATURATION

EAST REGION (n=9 Hospitals)

PERCENT OF DIVERSION: 2012- 2014

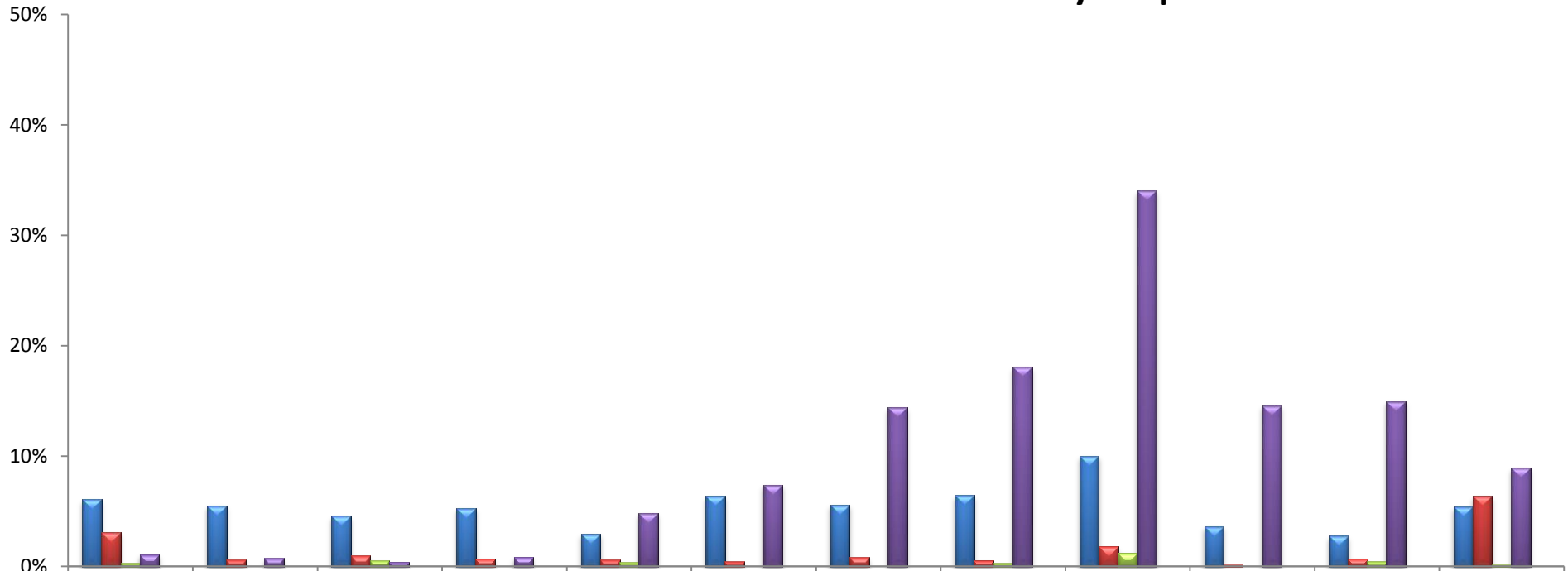


Values represent the AVERAGE incidence of ED Saturation. 100% equals the total number of hours per month.

**HOSPITAL DIVERSION TO 9-1-1 TRAFFIC
due to EMERGENCY DEPARTMENT SATURATION**

EAST REGION (n=9 Hospitals)

MONTHLY PERCENT OF DIVERSION 2014: by hospital



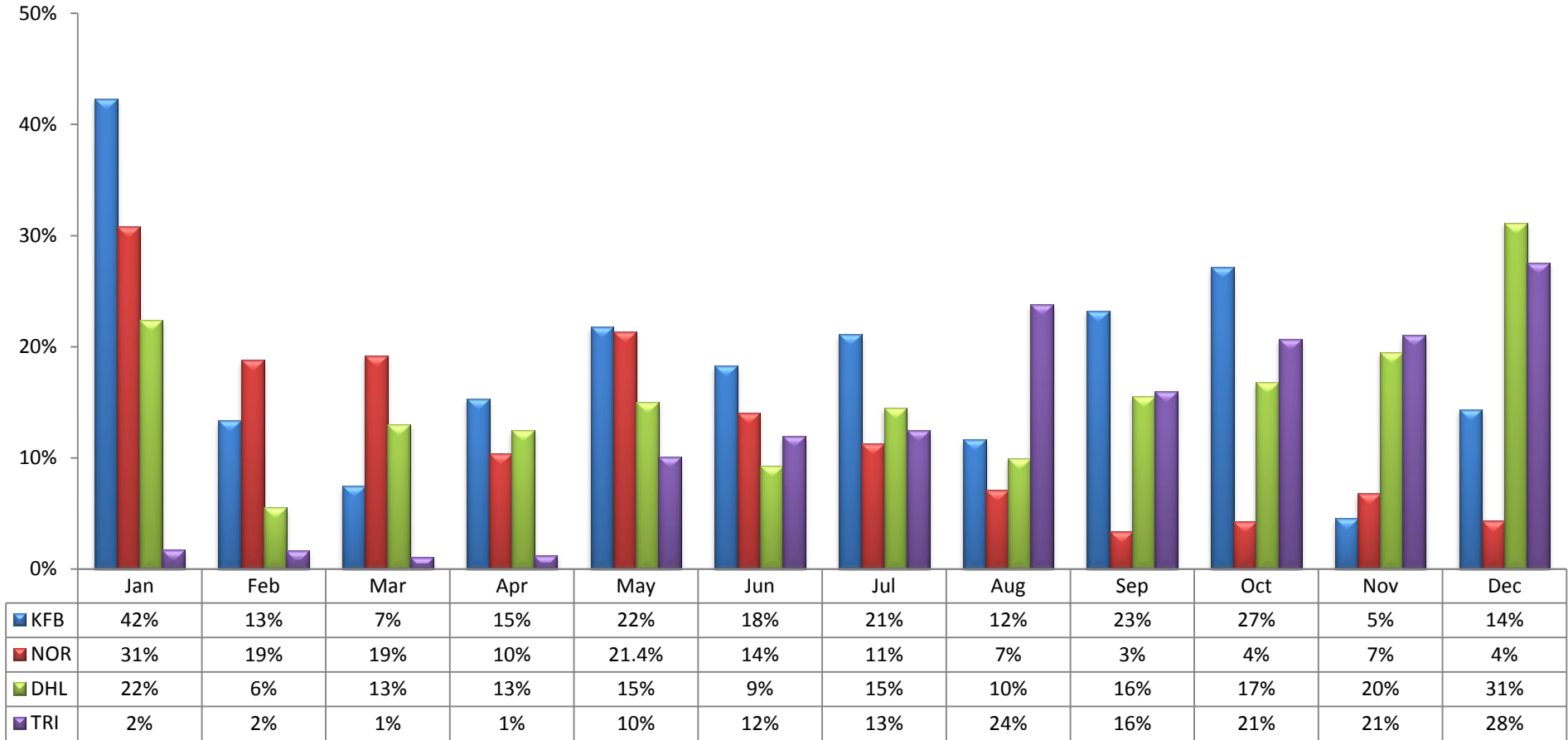
■ BEV	6%	6%	5%	5%	3%	6%	6%	6%	10%	4%	3%	5%
■ PIH	3%	1%	1%	1%	1%	0%	1%	1%	2%	0%	1%	6%
■ WHH	0%	0%	1%	0%	0%	0%	0%	0%	1%	0%	0%	0%
■ DCH	1%	1%	0%	1%	5%	7%	14%	18%	34%	15%	15%	9%
■ CPM	0%	0%	0%	0%	0%	0%	0%	0%	0%	0%	0%	0%

CODE	HOSPITAL NAME	CODE	HOSPITAL NAME	CODE	HOSPITAL NAME
BEV	Beverly Hospital	WHH	Whittier Hospital Medical Center	CPM	Coast Plaza Doctors Hospital
PIH	Presbyterian Intercommunity Hospital	DCH	Downey Regional Medical Center		

**HOSPITAL DIVERSION TO 9-1-1 TRAFFIC
due to EMERGENCY DEPARTMENT SATURATION**

EAST REGION (n=9 Hospitals)

MONTHLY PERCENT OF DIVERSION 2014: by hospital

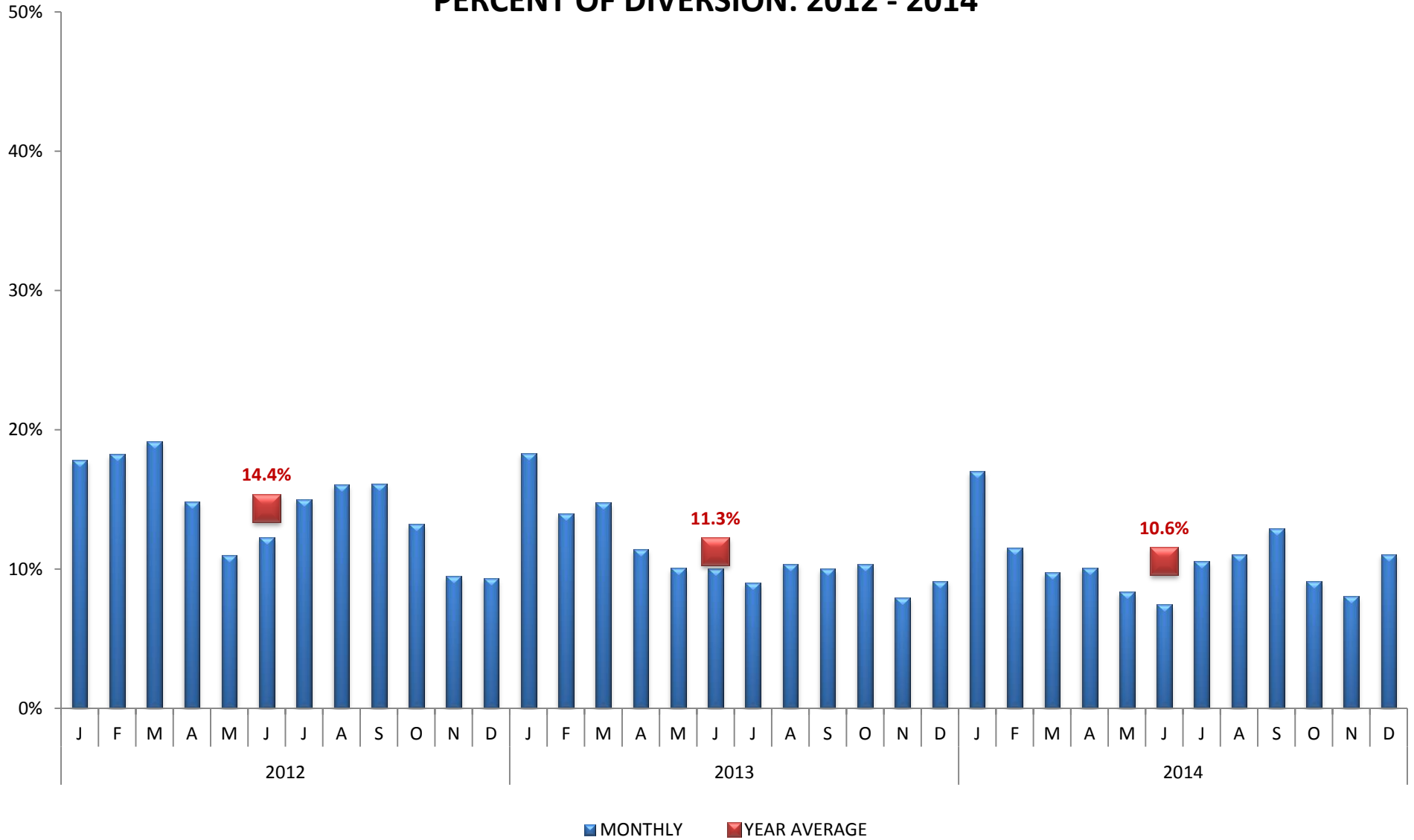


CODE	HOSPITAL NAME	CODE	HOSPITAL NAME
KFB	Kaiser Foundation, Downey	DHL	Lakewood Regional Medical Center
NOR	LA Community of Norwalk	TRI	Tri-City Regional Medical Center

HOSPITAL DIVERSION TO 9-1-1 TRAFFIC
due to EMERGENCY DEPARTMENT SATURATION

METRO REGION (n=11 Hospitals)

PERCENT OF DIVERSION: 2012 - 2014

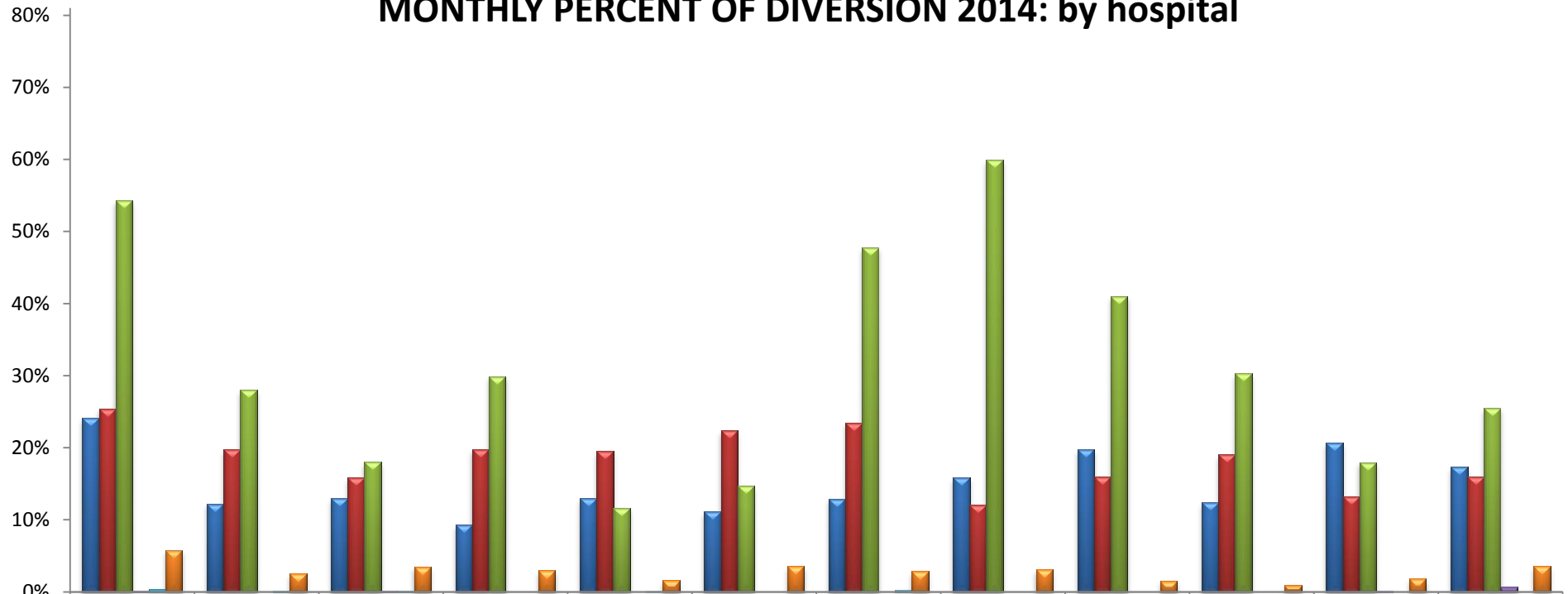


Values represent the AVERAGE incidence of ED Saturation. 100% equals the total number of hours per month.

**HOSPITAL DIVERSION TO 9-1-1 TRAFFIC
due to EMERGENCY DEPARTMENT SATURATION**

METRO REGION (n=11 Hospitals)

MONTHLY PERCENT OF DIVERSION 2014: by hospital



	Jan	Feb	Mar	Apr	May	Jun	Jul	Aug	Sep	Oct	Nov	Dec
CAL	24%	12%	13%	9%	13%	11%	13%	16%	20%	12%	21%	17%
GSH	25%	20%	16%	20%	19%	22%	23%	12%	16%	19%	13%	16%
USC	54%	28%	18%	30%	12%	15%	48%	60%	41%	30%	18%	25%
WMH	0%	0%	0%	0%	0%	0%	0%	0%	0%	0%	0%	1%
ELA	0%	0%	0%	0%	0%	0%	0%	0%	0%	0%	0%	0%
CHP	6%	3%	3%	3%	2%	4%	3%	3%	2%	1%	2%	4%

CODE	HOSPITAL NAME	CODE	HOSPITAL NAME	CODE	HOSPITAL NAME
CAL**	California Hospital Medical Center	USC	LAC+USC Medical Center	ELA***	East Los Angeles Doctors Hospital
GSH**	Good Samaritan Hospital	WMH***	White Memorial Medical Center	CHP***	Community Hospital of Huntington Park

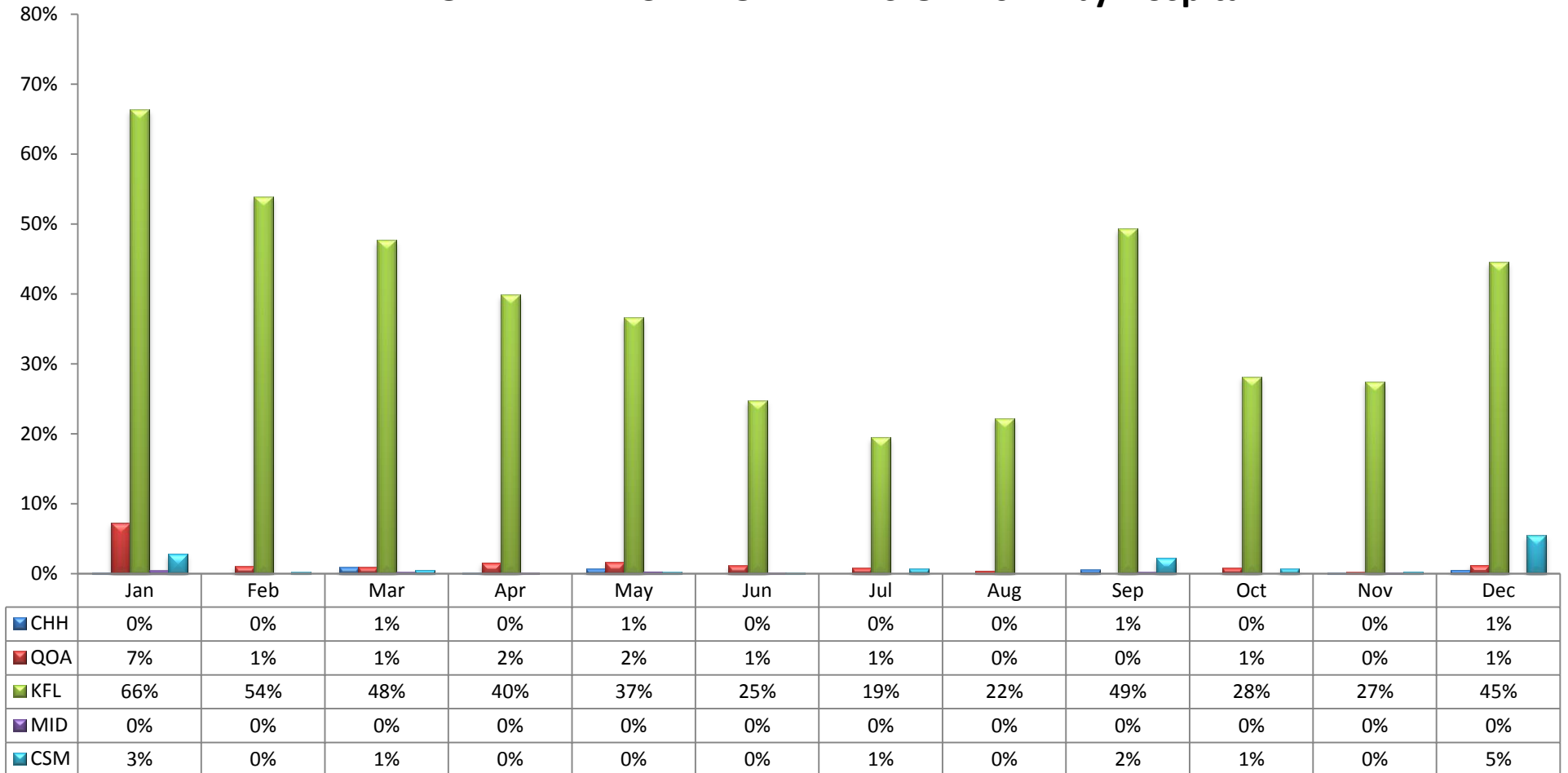
** Combined Service Area - may divert to each other

*** Combined Service Area - ELA & CHP may divert to WMH

**HOSPITAL DIVERSION TO 9-1-1 TRAFFIC
due to EMERGENCY DEPARTMENT SATURATION**

METRO REGION (n=11 Hospitals)

MONTHLY PERCENT OF DIVERSION 2014: by Hospital

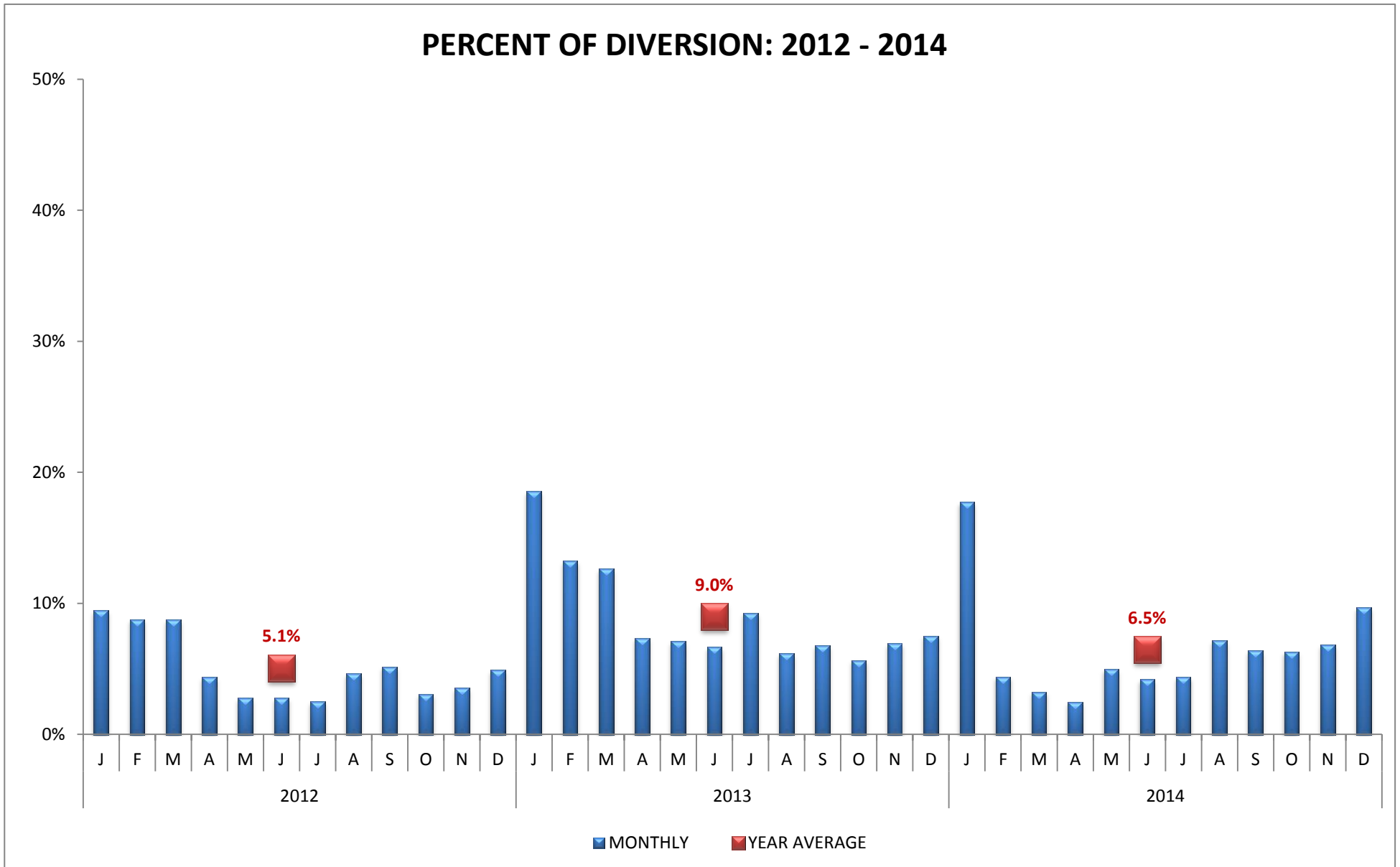


CODE	HOSPITAL NAME	CODE	HOSPITAL NAME	CODE	HOSPITAL NAME
CHH	Childrens Hospital of Los Angeles	KFL	Kaiser, Los Angeles	CSM	Cedars Sinai Medical Center
QOA	Hollywood Presbyterian Medical Center	MID	Olympia Medical Center		

HOSPITAL DIVERSION TO 9-1-1 TRAFFIC
 due to EMERGENCY DEPARTMENT SATURATION

WEST REGION (n=6 Hospitals)

PERCENT OF DIVERSION: 2012 - 2014

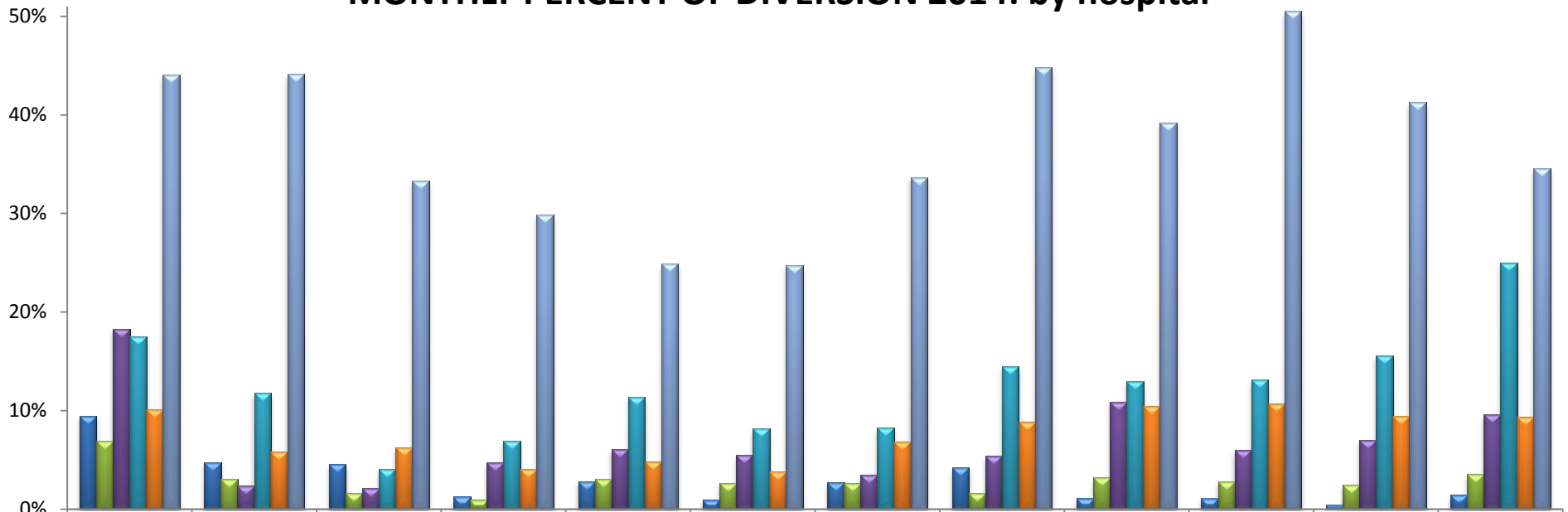


Values represent the AVERAGE incidence of ED Saturation. 100% equals the total number of hours per month.

**HOSPITAL DIVERSION TO 9-1-1 TRAFFIC
due to EMERGENCY DEPARTMENT SATURATION**

WEST REGION (n=6 Hospitals)

MONTHLY PERCENT OF DIVERSION 2014: by hospital



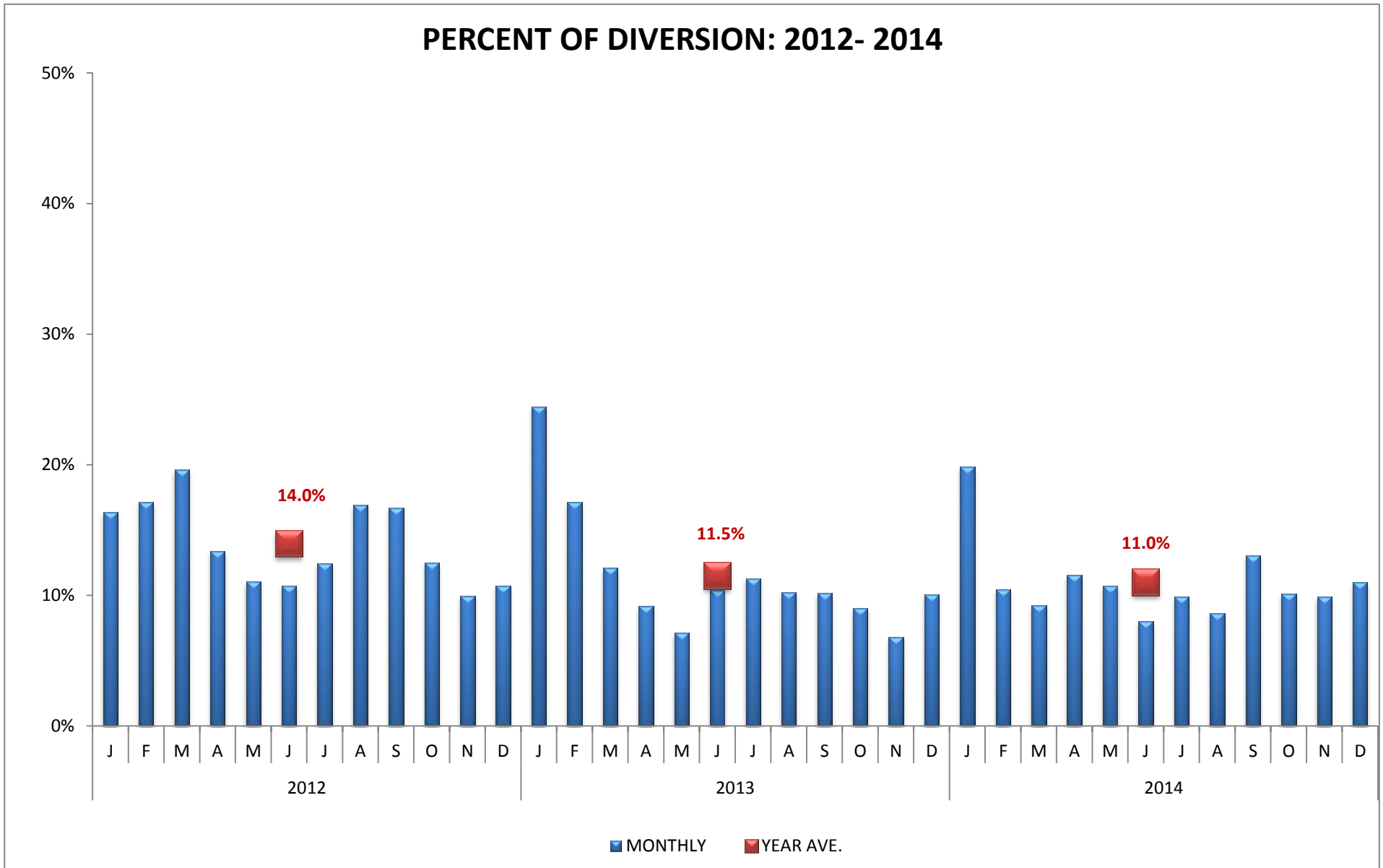
	Jan	Feb	Mar	Apr	May	Jun	Jul	Aug	Sep	Oct	Nov	Dec
BMC	9%	5%	5%	1%	3%	1%	3%	4%	1%	1%	0%	1%
DFM	7%	3%	2%	1%	3%	3%	3%	2%	3%	3%	2%	4%
KFW	18%	2%	2%	5%	6%	5%	3%	5%	11%	6%	7%	10%
SJH	18%	12%	4%	7%	11%	8%	8%	14%	13%	13%	16%	25%
SMH	10%	6%	6%	4%	5%	4%	7%	9%	10%	11%	9%	9%
UCL	44%	44%	33%	30%	25%	25%	34%	45%	39%	51%	41%	35%

CODE	HOSPITAL NAME	CODE	HOSPITAL NAME	CODE	HOSPITAL NAME
BMC	S. California Hospital at Culver City	KFW	Kaiser, West Los Angeles	SMH	Santa Monica/UCLA Medical Center
DFM	Marina Del Rey Hospital	SJH	St. John's Hospital & Health Center	UCL	UCLA Medical Center

HOSPITAL DIVERSION TO 9-1-1 TRAFFIC
 due to EMERGENCY DEPARTMENT SATURATION

SOUTH REGION (n=12 Hospitals)

PERCENT OF DIVERSION: 2012- 2014

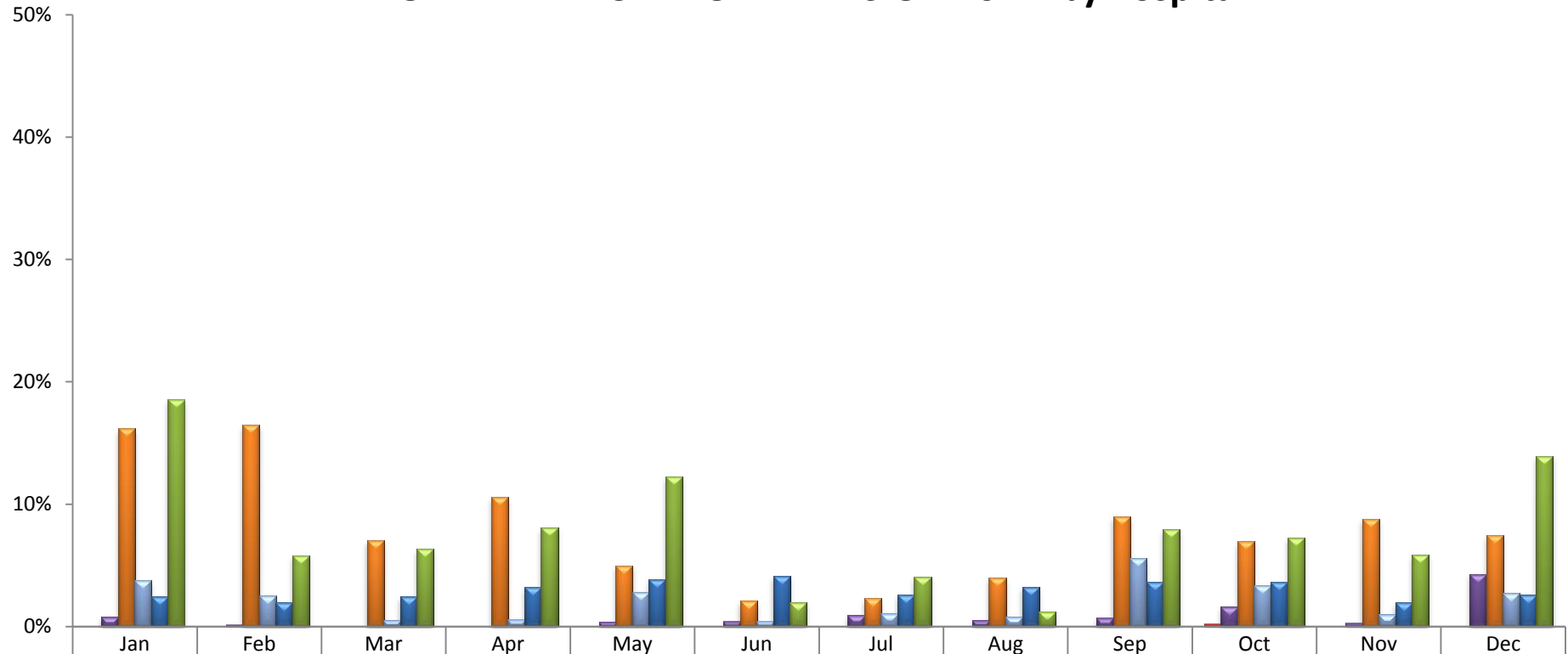


Values represent the AVERAGE incidence of ED Saturation. 100% equals the total number of hours per month.

**HOSPITAL DIVERSION TO 9-1-1 TRAFFIC
due to EMERGENCY DEPARTMENT SATURATION**

SOUTH REGION (n=12 Hospitals)

MONTHLY PERCENT OF DIVERSION 2014: by hospital



■ CNT	0%	0%	0%	0%	0%	0%	0%	0%	0%	0%	0%	0%
■ MHG	1%	0%	0%	0%	0%	0%	1%	1%	1%	2%	0%	4%
■ LCM	16%	16%	7%	11%	5%	2%	2%	4%	9%	7%	9%	7%
■ TOR	4%	3%	1%	1%	3%	0%	1%	1%	6%	3%	1%	3%
■ SPP	2%	2%	2%	3%	4%	4%	3%	3%	3.6%	4%	2%	3%
■ KFH	19%	6%	6%	8%	12%	2%	4%	1%	8%	7%	6%	14%

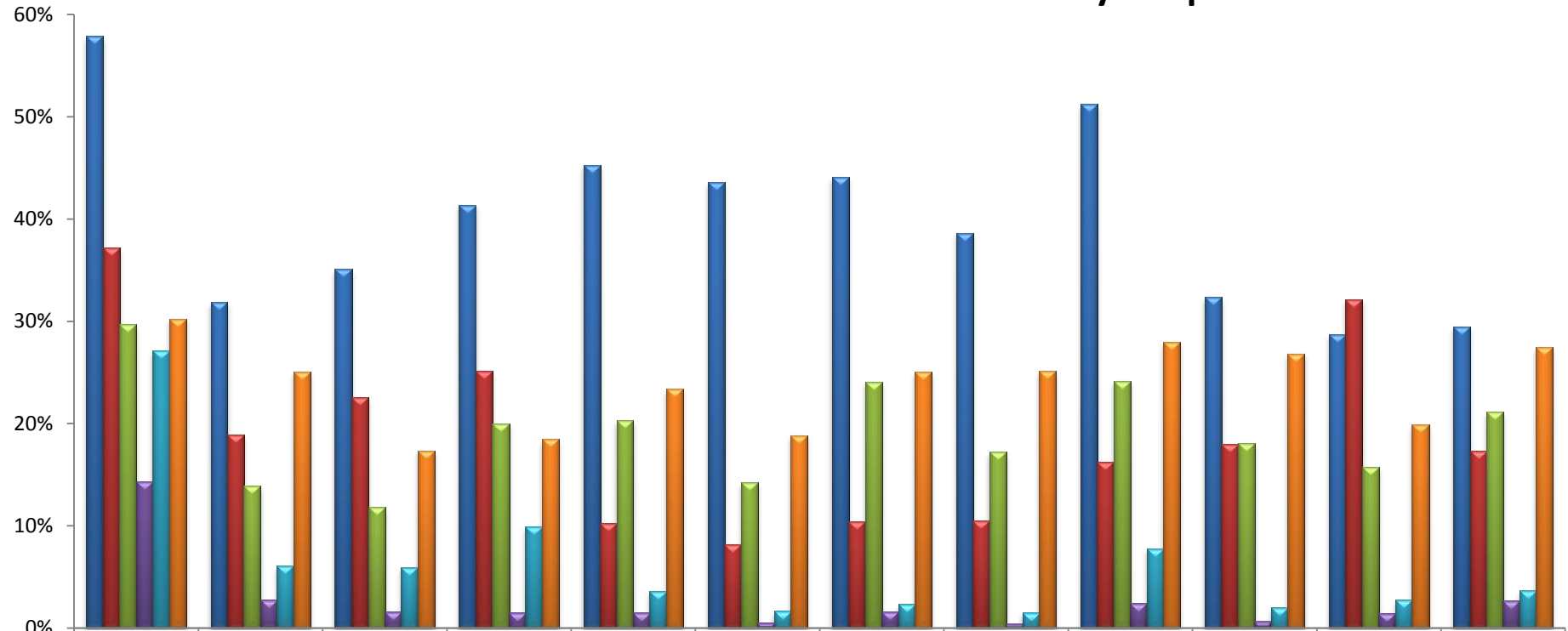
CODE	HOSPITAL NAME	CODE	HOSPITAL NAME	CODE	HOSPITAL NAME
CNT*	Centinela Hospital Medical Center	LCM	Providence Little Company of Mary-Torrance	SPP	Providence Little Company of Mary-San Pedro
MHG*	Memorial Hospital of Gardena	TOR	Torrance Memorial Medical Center	KFH	Kaiser Foundation - South Bay

* Service Area Hospital

**HOSPITAL DIVERSION TO 9-1-1 TRAFFIC
due to EMERGENCY DEPARTMENT SATURATION**

SOUTH REGION (n=12 Hospitals)

MONTHLY PERCENT OF DIVERSION 2014: by Hospital



■ SFM	58%	32%	35%	41%	45%	44%	44%	39%	51%	32%	29%	29%
■ HGH	37%	19%	23%	25%	10%	8%	10%	11%	16%	18%	32%	17%
■ LBM	30%	14%	12%	20%	20%	14%	24%	17%	24%	18%	16%	21%
■ PLB	14%	3%	2%	2%	2%	1%	2%	0%	2%	1%	1%	3%
■ LBC	27%	6%	6%	10%	3.6%	1.7%	2%	1.5%	7.8%	2.0%	2.8%	3.7%
■ SMM	30%	25%	17%	18%	23%	18.8%	25%	25%	28%	27%	20%	27%

CODE	HOSPITAL NAME	CODE	HOSPITAL NAME	CODE	HOSPITAL NAME
SFM	St. Francis Medical Center	LBM	Long Beach Memorial Medical Center	LBC	Community Hospital of Long Beach
HGH	Harbor/UCLA Medical Center	PLB	College Medical Center	SMM	St. Mary Medical Center

Note: Catalina Island Medical Center = 0% diversion