

Homicides in LASD Jurisdiction 1960-2012

Los Angeles County
Sheriff's Department



**424 Homicides
in 1992**

Highest number of homicides
since before 1960

**143
Homicides
in 1970-71**

The last year there were
less homicides than 2012

Year	Count	Crime Rate
*2012	166	0.57
2011	170	0.58
2010	181	0.62
2009	212	0.71
2008	252	0.85
2007	267	0.96
2006	319	1.08
2005	371	1.26
2004	323	1.13
2003	327	1.15
2002	306	1.09
2001	262	0.97
2000	235	0.87
1999	227	0.84
1998	256	0.95
1997	289	1.02
1996	303	1.16
1995	386	1.51
1994	392	1.56
1993	387	1.51
1992	424	1.69
1991	393	1.59
1989-90	336	1.45
1988-89	271	1.21
1987-88	248	1.15
1986-87	273	1.28
1985-86	256	1.22
1984-85	235	1.17
1983-84	250	1.25
1982-83	248	1.24
1981-82	259	1.34
1980-81	302	1.57
1979-80	278	1.48
1978-79	302	1.62
1977-78	247	1.33
1976-77	238	1.29
1975-76	194	1.08
1974-75	186	1.04
1973-74	173	0.97
1972-73	190	1.07
1971-72	185	1.05
1970-71	143	0.82
1969-70	127	0.70
1968-69	137	0.77
1967-68	123	0.70
1966-67	116	0.66
1965-66	73	0.42
1964-65	78	0.45
1963-64	67	0.39
1962-63	50	0.31
1961-62	80	0.51
1960-61	50	0.32

*Preliminary

**166
Homicides
in 2012**

Lowest number of
homicides since 1970

This chart reflects the number of homicides in the total jurisdiction of the Los Angeles County Sheriff's Department, for 52 years starting with the year 1960.

The homicide ratio was calculated taking into account the total population living in areas policed by LASD. See the footnote below for more details.

Note: Total homicides since 1960 in communities policed by LASD:

Over 100 pages of details showing reported crime statistics for the patrol areas of the unincorporated communities and 42 contract cities policed by the Los Angeles County Sheriff's Department (including 2011), can be found at www.lasd.org. Visit the "Crime prevention and Information" page.

The following rules apply to this statistical data.

- Department-wide homicides from 1960-2012 include all unincorporated areas, contract cities, transit, and custody facilities.
- If a person is injured in one year and dies in a later year the homicide is counted in the year of death. Variations in population coverage and reporting practices may cause differences in reporting from year to year.
- Crime rate per 10,000 population; based on reported crimes and population estimates for each year.

Source:

Statistical Digest/Statistical Summary/Year in Review/Crime & Arrest Statistics books for 1960-2012.

Actual Crimes are Reported Crimes minus unfounded.

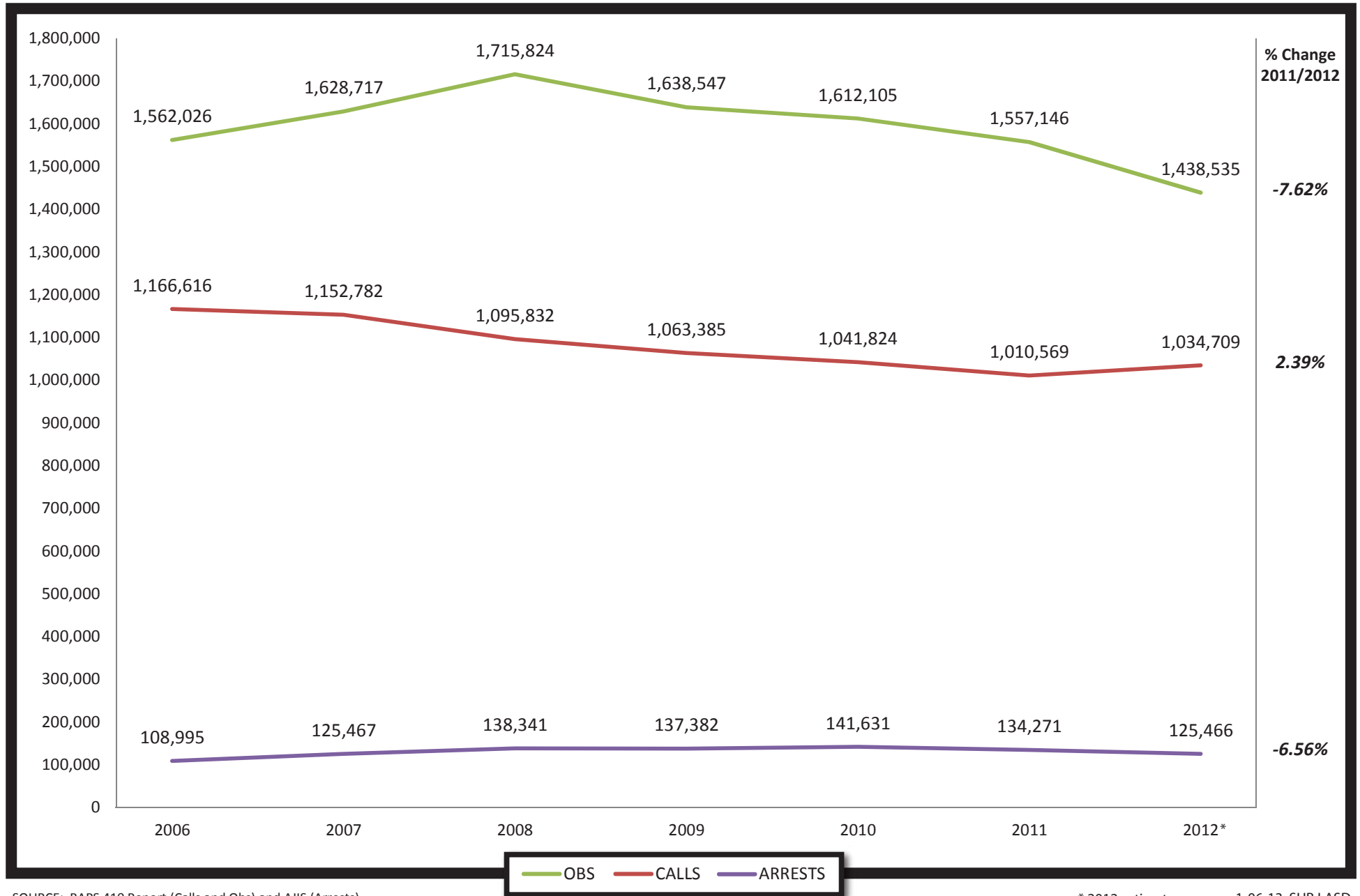
Contract cities and unincorporated areas patrolled by LASD have changed throughout the years.

Prepared by: Statistical Unit of the Crime Analysis program, Technical Services Division, 01/2013.

Population source for crime rates per 10,000 population: 2001- 2009 population projections from the Chief Administrative Officer's (CAO) Office of Urban Research and California Department of Finance. 2011 and 2012 population source from the 2010 United States Census Population count.

Arrests, Calls for Service & Observation Contacts 2006-2012

Los Angeles County
Sheriff's Department

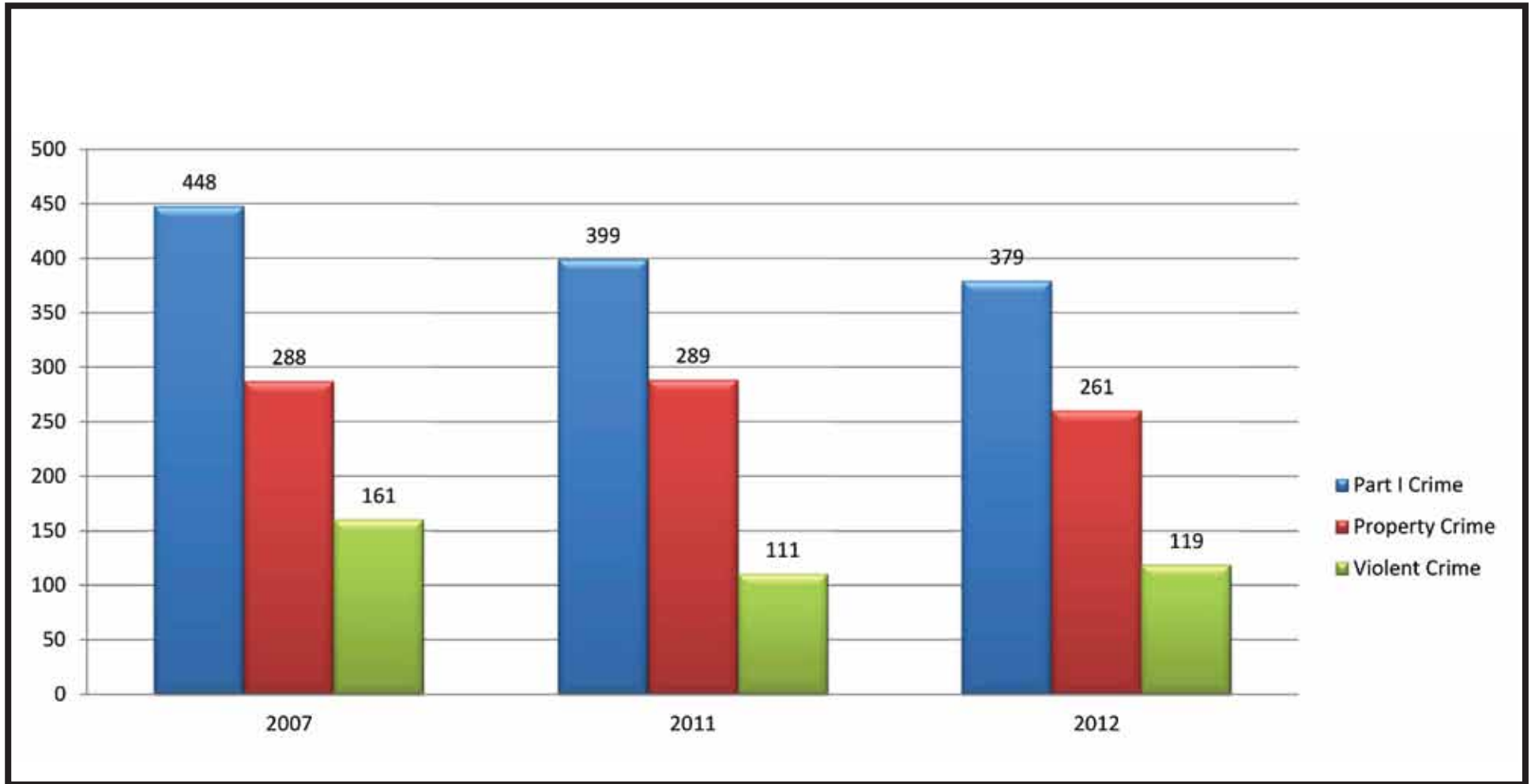


SOURCE: RAPS 410 Report (Calls and Obs) and AJIS (Arrests).

* 2012 estimate

Compton Station Crime Rate Summary *per 10,000 Population*

Los Angeles County
Sheriff's Department



*Numbers from Larcis 5 Year Report
** Population from CAAS book

2007-2012

Part I Crime 5 Year Change = -19.1%
Property Crime 5 Year Change = -13.4%
Violent Crime 5 Year Change = -29.2%

Compton Homicides (1990-2012)

Los Angeles County
Sheriff's Department



Note: The City of Compton began contracting for policing services with the Los Angeles County Sheriff's Department on September 1, 2000 and disbanded the Compton Police Department. Numbers from LARCIS and DOJ.

1960-2012 Crime Statistics

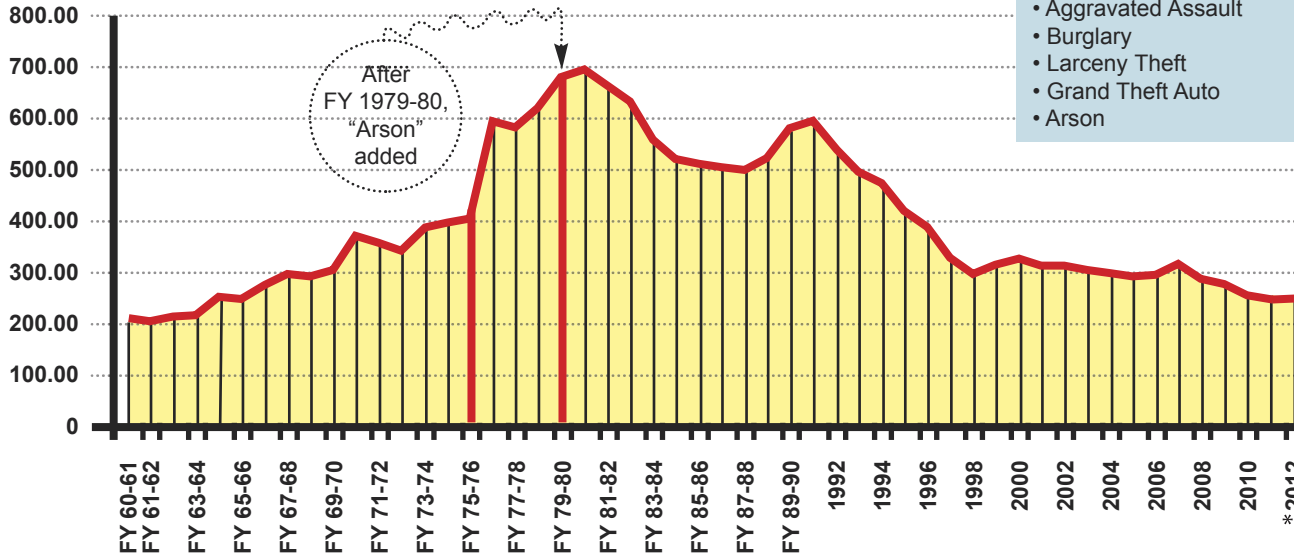


Fiscal Years (FY): 1960-1990, Calendar Years: 1991-2012

Part I Crime Rate - LASD Jurisdiction

Part I Crimes include:

- Criminal Homicide
- Forcible Rape
- Robbery
- Aggravated Assault
- Burglary
- Larceny Theft
- Grand Theft Auto
- Arson

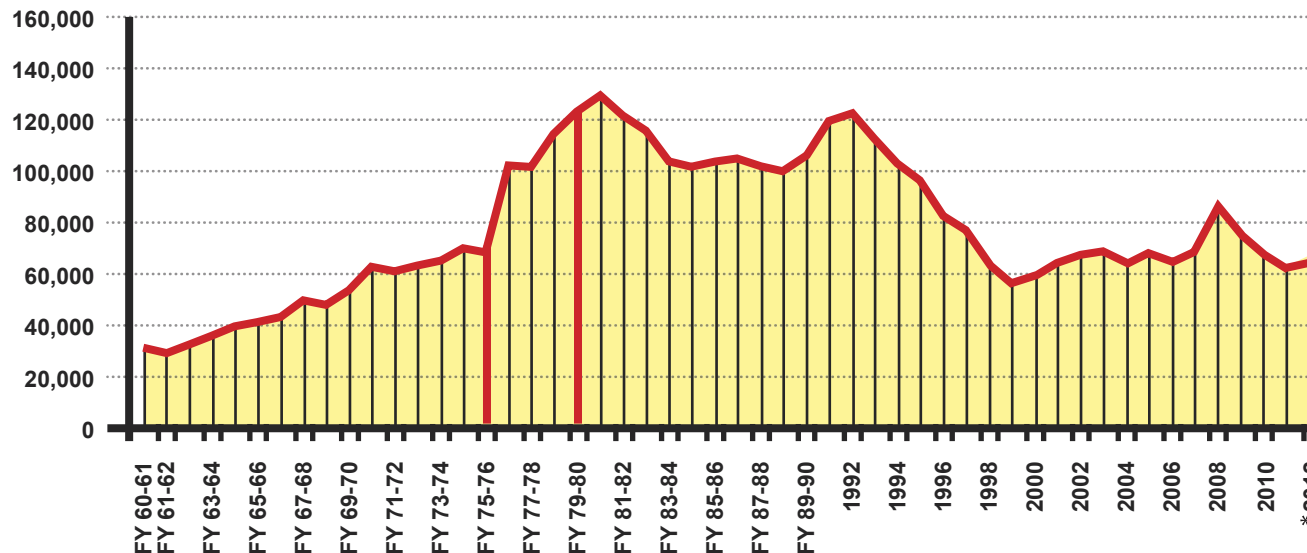


Part I Crime Rate 5 & 30 Years

- 2012 - 246.15
- 2011 - 245.33
- 2010 - 255.91
- 2009 - 261.90
- 2008 - 290.65
- 2002 - 317.06
- 1992 - 576.52
- 1982-83 - 641.07

Actual Part I Crimes - LASD Jurisdiction

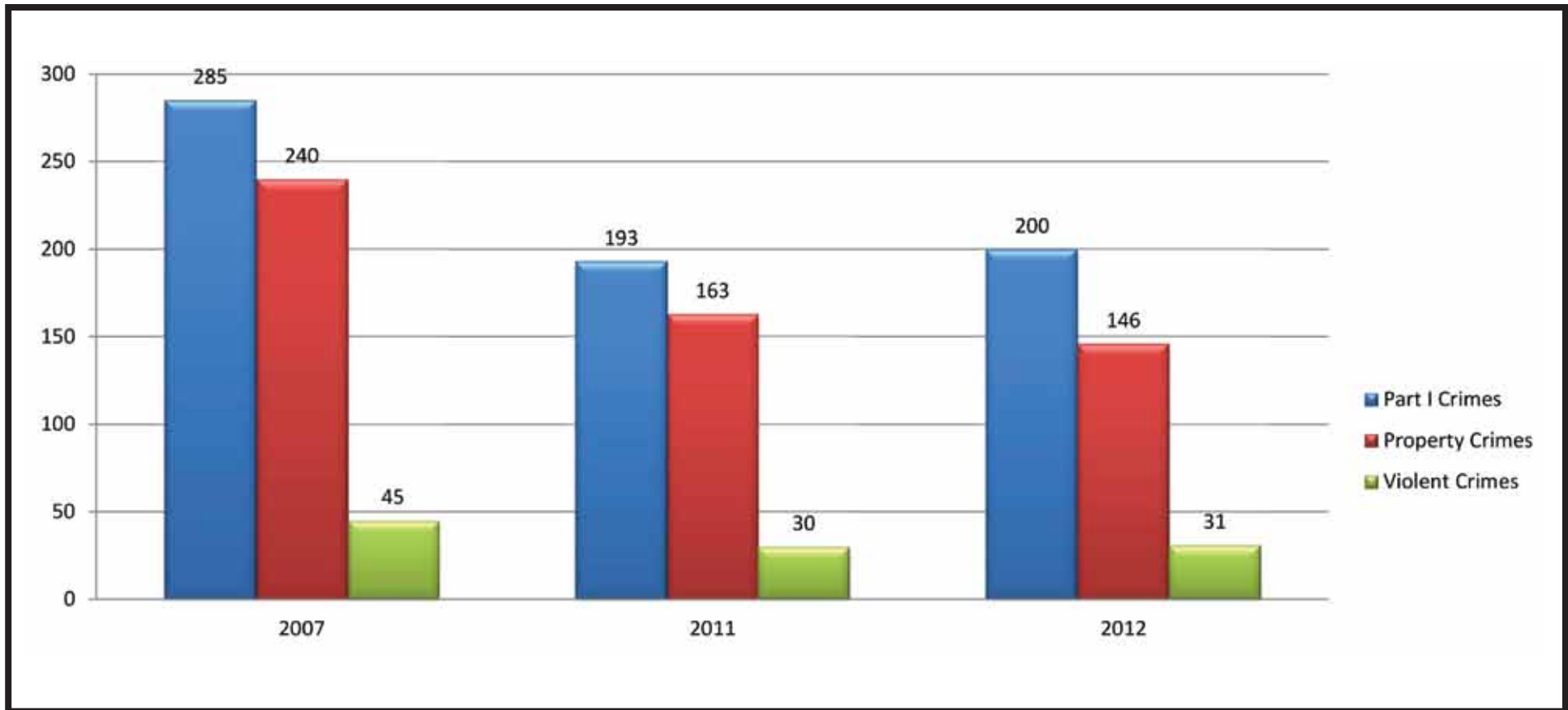
Cases Handled used for years prior to FY 1968-69.



Actual Part I Crimes 5 & 30 Years

- 2012 - 72,871
- 2011 - 70,959
- 2010 - 73,998
- 2009 - 77,014
- 2008 - 85,662
- 2002 - 88,812
- 1992 - 144,216
- 1982-1983 - 123,686

Field Operations Region I Crime Rate Summary *per 10,000 Population*

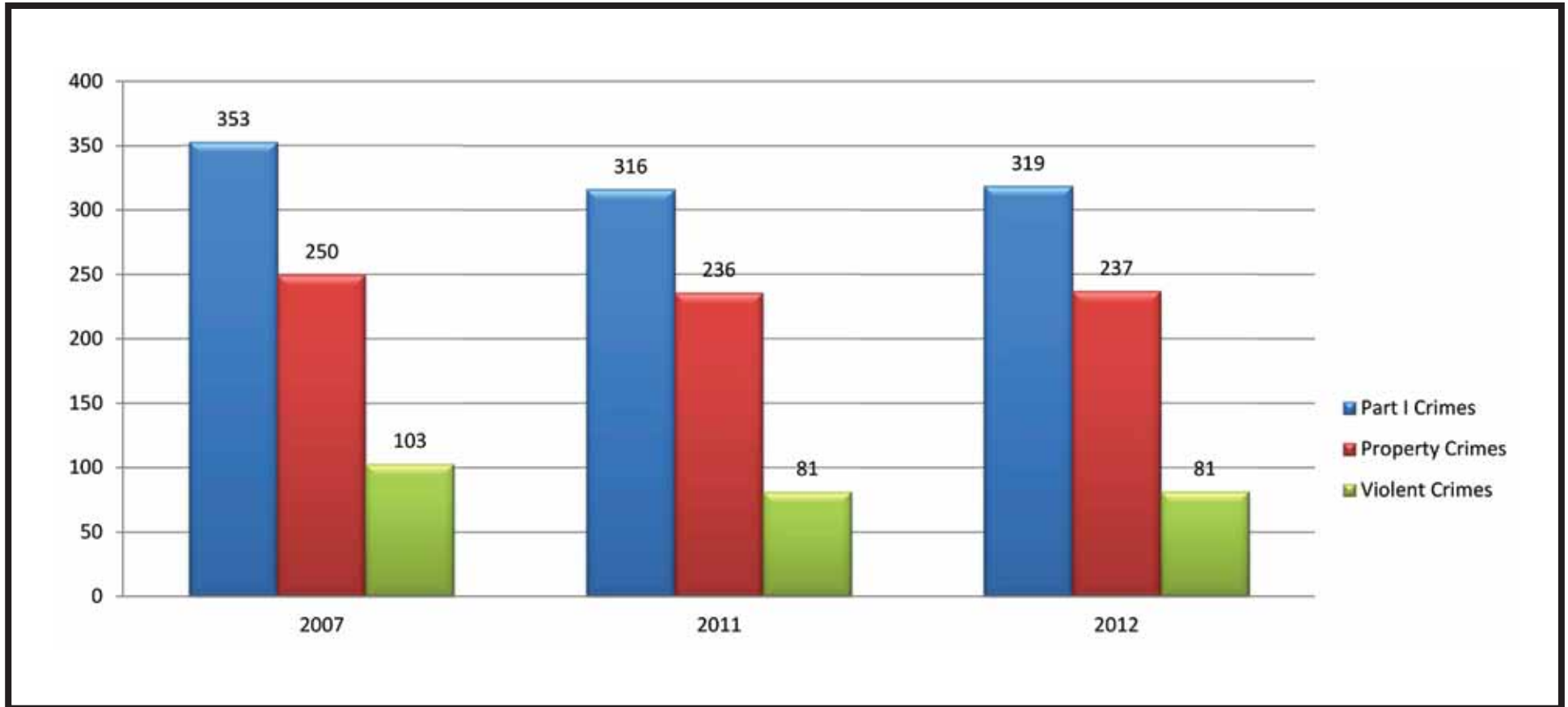


*Numbers from Larcis 5 Year Report
** Population from CAAS book

2007-2012
Part I Crime 5 Year Change = -29.8%
Property Crime 5 Year Change = -39.1%
Violent Crime 5 Year Change = -32.3%

Field Operations Region II

Crime Rate Summary *per 10,000 Population*



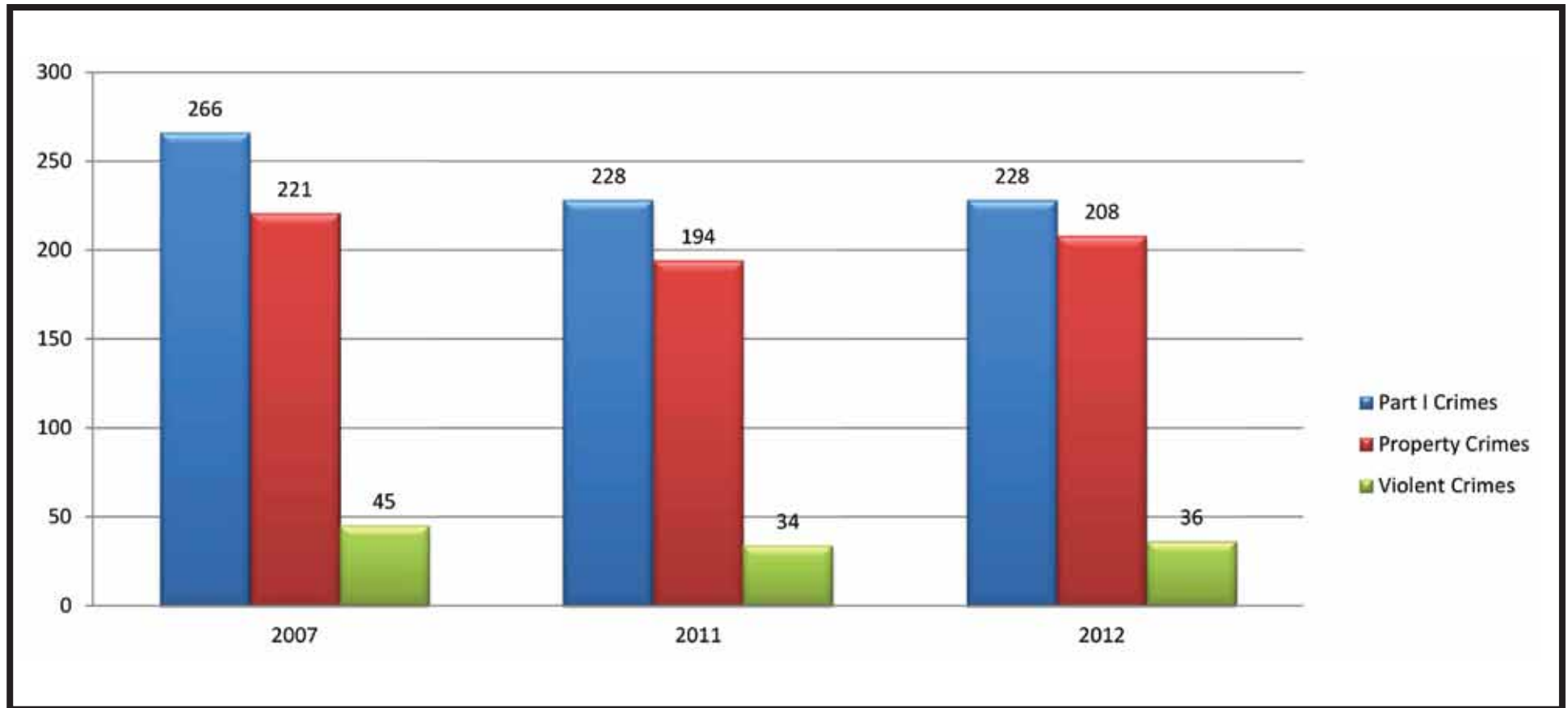
*Numbers from Larcis 5 Year Report
** Population from CAAS book

2007-2012
Part I Crime 5 Year Change = -9.7%
Property Crime 5 Year Change = -5.6%
Violent Crime 5 Year Change = -20.6%

Field Operations Region III

Crime Rate Summary *per 10,000 Population*

Los Angeles County
Sheriff's Department



*Numbers from Larcis 5 Year Report

** Population from CAAS book

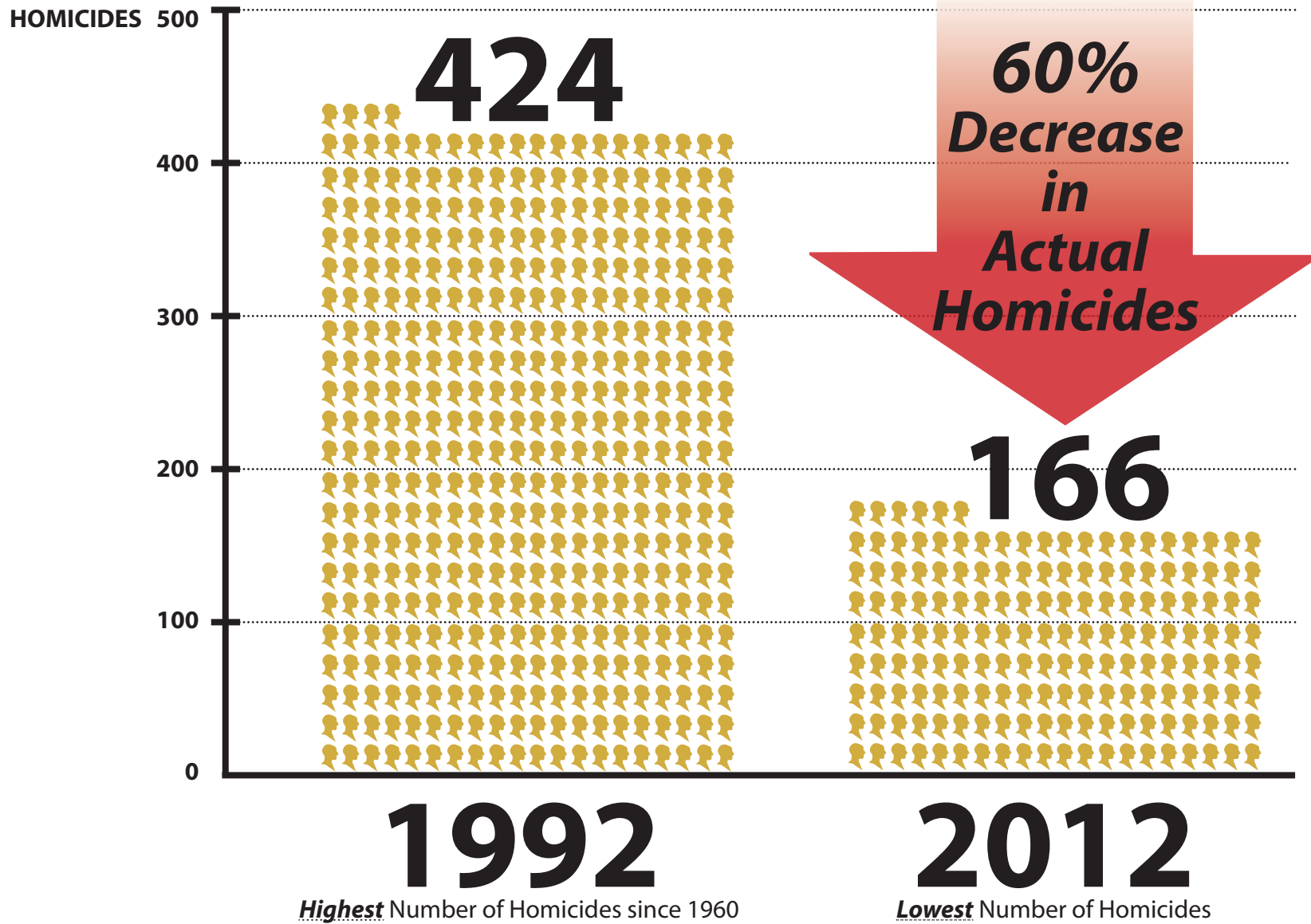
2007-2012

Part I Crime 5 Year Change = -14.2%
Property Crime 5 Year Change = -5.7%
Violent Crime 5 Year Change = -19.5%



Los Angeles County
Sheriff's Department

Homicides in LASD Jurisdiction



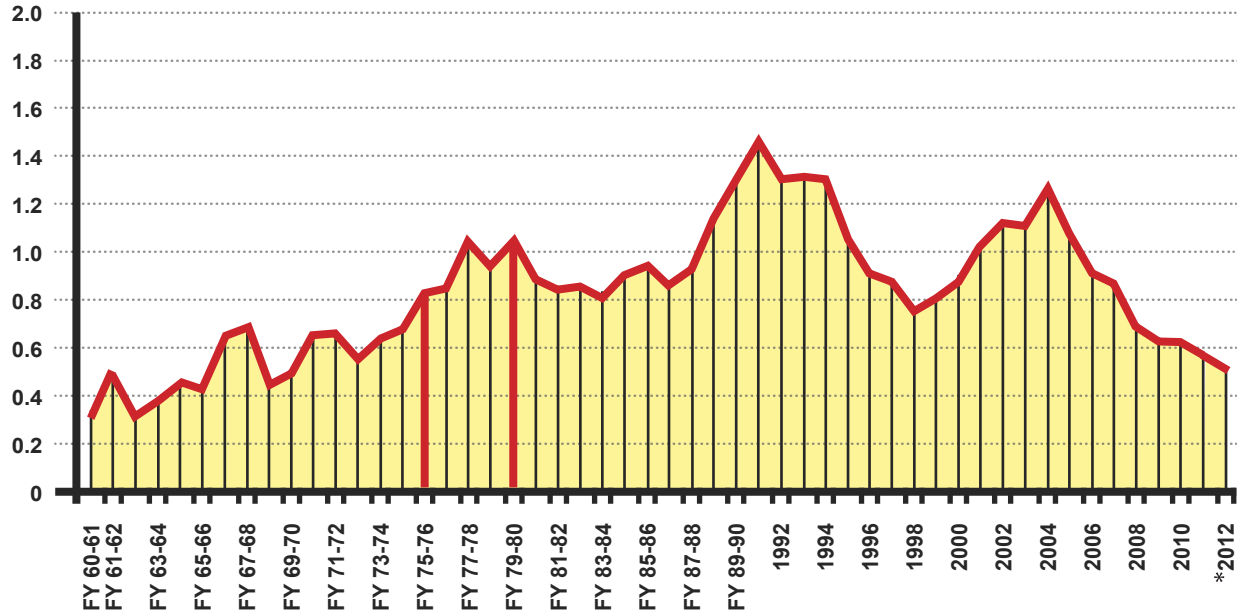
* 2012 Preliminary

1960-2012 Homicides

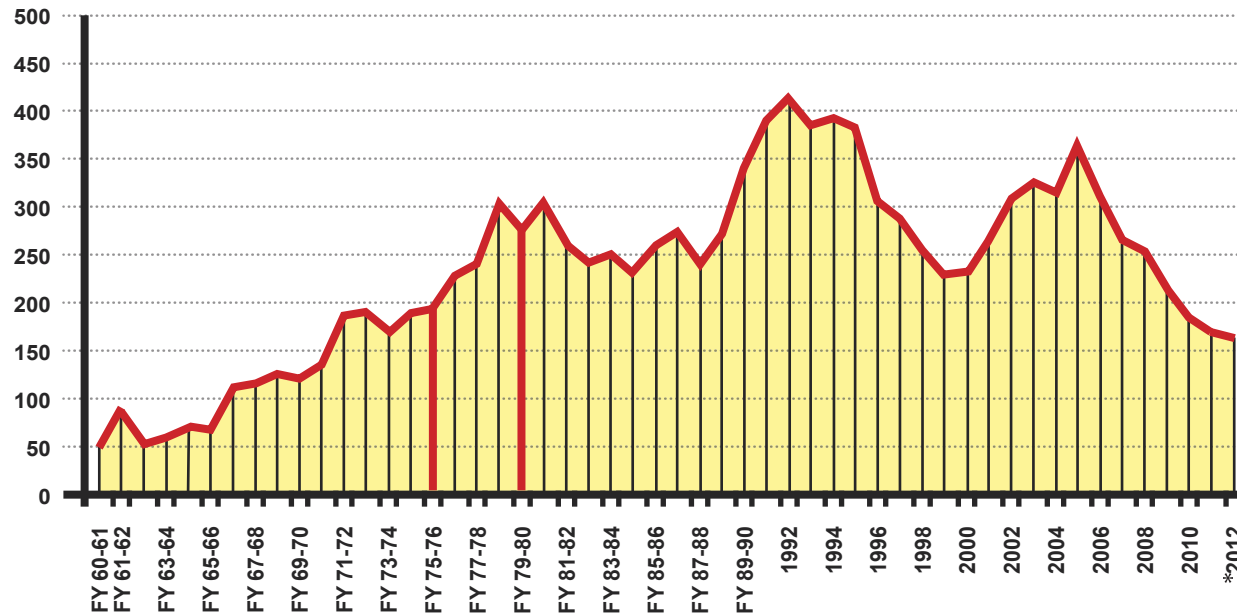
Los Angeles County
Sheriff's Department



Homicide Rate - LASD Jurisdiction



Actual Homicides - LASD Jurisdiction



Population source for crime rates per 10,000 population: 2001- 2009 population projections from the Chief Administrative Officer's (CAO) Office of Urban Research and California Department of Finance. 2011 and 2012 population source from the 2010 United States Census Population count. *2012 Preliminary

LASD Station Part I Crime Summary



YTD 12/31/2012 - Part I Crime Rate Per 10,000 Population - Preliminary Data

01/07/2013 09:25 am

PART I CRIMES

	2007			2011			2012		5 Year Change in YTD Crime Rate 2012/2007	1 Year Change in YTD Crime Rate 2012/2011
	YTD Reported Incidents	YTD Crime Rate	Total Reported Incident 2007	YTD Reported Incidents	YTD Crime Rate	Total Reported Incidents 2011	YTD Reported Incidents	YTD Crime Rate		

REGION	STATION	2007 YTD Reported Incidents	2007 YTD Crime Rate	2007 Total Reported Incident	2011 YTD Reported Incidents	2011 YTD Crime Rate	2011 Total Reported Incidents	2012 YTD Reported Incidents	2012 YTD Crime Rate	5 Year Change in YTD Crime Rate 2012/2007	1 Year Change in YTD Crime Rate 2012/2011
I	ALTADENA STATION	896	198.27	896	720	163.24	720	753	170.73	-13.9%	4.6%
	CRESCENTA VALLEY STATION	935	224.3	935	657	158.54	657	629	151.79	-32.3%	-4.3%
	LANCASTER STATION	7,100	415.33	7,100	4,698	249.91	4,698	5,096	271.09	-34.7%	8.5%
	MALIBU/LOST HILLS STATION	1,684	180.64	1,684	1,294	145.12	1,294	1,224	137.27	-24.0%	-5.4%
	PALMDALE STATION	6,289	363.33	6,289	4,817	244.77	4,817	5,091	258.69	-28.8%	5.7%
	SANTA CLARITA VALLEY STATION	5,709	235.81	5,709	3,945	146.81	3,945	4,247	158.05	-33.0%	7.7%
	TEMPLE STATION	4,932	245.89	4,932	3,474	183.24	3,474	3,303	174.22	-29.2%	-4.9%
II	AVALON STATION	216	530.32	216	76	185.55	76	89	217.29	-59.0%	17.1%
	CARSON STATION	4,360	361.48	4,360	3,758	323.93	3,758	4,111	354.36	-2.0%	9.4%
	CENTURY STATION	7,297	352.82	7,297	5,783	308.44	5,783	5,680	302.94	-14.1%	-1.8%
	COMPTON STATION	5,554	448.05	5,554	4,730	399.41	4,730	4,494	379.48	-15.3%	-5.0%
	LOMITA STATION	1,452	186.48	1,452	1,334	178.01	1,334	1,304	174	-6.7%	-2.3%
	MARINA DEL REY STATION	1,094	434.09	1,094	940	352.14	940	925	346.52	-20.2%	-1.6%
	SOUTH LOS ANGELES STATION	3,541	275.69	3,541	2,967	253.11	2,967	2,947	251.4	-8.8%	-0.7%
	WEST HOLLYWOOD STATION	2,064	542.33	2,064	1,901	541.5	1,901	2,108	600.47	10.7%	10.9%
III	CERRITOS STATION	2,024	368.85	2,024	1,847	376.62	1,847	2,001	408.03	10.6%	8.3%
	EAST LOS ANGELES STATION	4,442	208.37	4,442	4,612	242.08	4,612	4,929	258.71	24.2%	6.9%
	INDUSTRY STATION	5,454	275.29	5,454	3,882	213.54	3,882	3,921	215.68	-21.7%	1.0%
	LAKEWOOD STATION	9,425	371.7	9,425	6,848	280.97	6,848	7,072	290.16	-21.9%	3.3%
	NORWALK STATION	5,639	243.03	5,639	4,513	204.22	4,513	4,903	221.87	-8.7%	8.6%
	PICO RIVERA STATION	2,663	260.6	2,663	2,357	251.58	2,357	2,737	292.14	12.1%	16.1%
	SAN DIMAS STATION	1,944	200.1	1,944	1,221	150.05	1,221	1,331	163.57	-18.3%	9.0%
	WALNUT STATION	2,971	200.43	2,971	2,066	150.23	2,066	2,401	174.59	-12.9%	16.2%

Homicides, Rapes and Aggravated Assaults are counted by the number of victims. All others are counted by incidents. Arsons are counted regardless of crime hierarchy.

2007 Population Source: Los Angeles County Office of Urban Research (Based on estimates from CA Department of Finance)

2011 Population Source: 2011 U.S. Census. / 2012 YTD Crime Rates computed based on 2011 population data

N/C - Not Calculable. Crime counts are for patrol station crimes only

Red depicts crime increases of more than 30%. Green depicts crime decreases of more than 30%

Preliminary data - information is time sensitive and subject to change upon further analysis. For each incident, only the most serious offense is counted.