



LA County Coordination and Planning
for the 2028 Olympic & Paralympic Games

Los Angeles County Cities Convening: Sustainability

February 26, 2026

WELCOME

John Cooke

LA County Chief Executive Office



888 FOR 288

**LA County Coordination and Planning
for the 2028 Olympic & Paralympic Games**

Agenda

Welcome

John Cooke, LA County Chief Executive Office

Updates from LA28

Joey Freeman, LA28

Presentations:

- **LA28 Impact and Sustainability Plan**
Becky Dale, LA28
- **City of Los Angeles Sustainability Priorities for Major Events**
Lizzeth Rosales, LA City Mayor's Office of Energy and Sustainability
- **Sustainability for the 2028 Games and LA County's Heat Action Plan**
Rita Kampalath, LA County Chief Sustainability Office
- **Heat Mitigation: Mobile Water Stations, Shade Structures, Heat Messaging**
Susana Reyes, LA Metro Office of Sustainability Policy
- **ShadeLA: Opportunities for Participation**
Marianna Babboni and Edith de Guzman, ShadeLA

Q&A Panel

Closing Remarks & Next Steps

Kelly Quinn, LA County Chief Executive Office



LA28 Impact and Sustainability Plan

LA28
Becky Dale



888 FOR 288

**LA County Coordination and Planning
for the 2028 Olympic & Paralympic Games**

City of Los Angeles Sustainability Priorities for Major Events

City of Los Angeles
Mayor's Office of Energy
and Sustainability

Lizzeth Rosales



888 FOR 288

LA County Coordination and Planning
for the 2028 Olympic & Paralympic Games

CITY OF LOS ANGELES SUSTAINABILITY PRIORITIES FOR MAJOR EVENTS



TRANSIT-FIRST

Fleet electrification
and first/last mile
connectivity



HEAT MITIGATION

Comprehensive solutions to
protect most vulnerable



CLEAN ENERGY

Low-carbon solutions
for temporary power



ZERO WASTE

Plastic reduction strategies &
food waste diversion and
recovery

Sustainability for the 2028 Games and LA County's Heat Action Plan

LA County Chief
Sustainability Office

Rita Kampalath



888 FOR 288

LA County Coordination and Planning
for the 2028 Olympic & Paralympic Games



OurCounty

Sustainability for the 2028 Games

**Rita Kampalath, Chief Sustainability Officer for Los Angeles County
February 26, 2026**



The Chief Sustainability Office provides comprehensive and coordinated policy support and guidance for the Board of Supervisors, County departments, the unincorporated areas, and the region to make our communities healthier, more liveable, economically stronger, more equitable, more resilient, and more sustainable.



LA County Chief Sustainability Office
Environment • Economy • Equity

Preparing for the Games – and the Decades Ahead

- Waste reduction & materials management
- Energy efficiency & resilience
- Water conservation & hydration access
- EV infrastructure & clean mobility
- Heat resilience & public health



Waste Reduction Resources

- LA County Waste-Free Event Guide:
<https://cleanla.lacounty.gov/2025/04/28/master-the-art-of-waste-free-event-planning/>
- Food Donation and Recovery Outreach Program:
<https://pw.lacounty.gov/core-service-areas/environmental-services/smart-business-recycling/food-drop-businesses/>



LOS ANGELES COUNTY



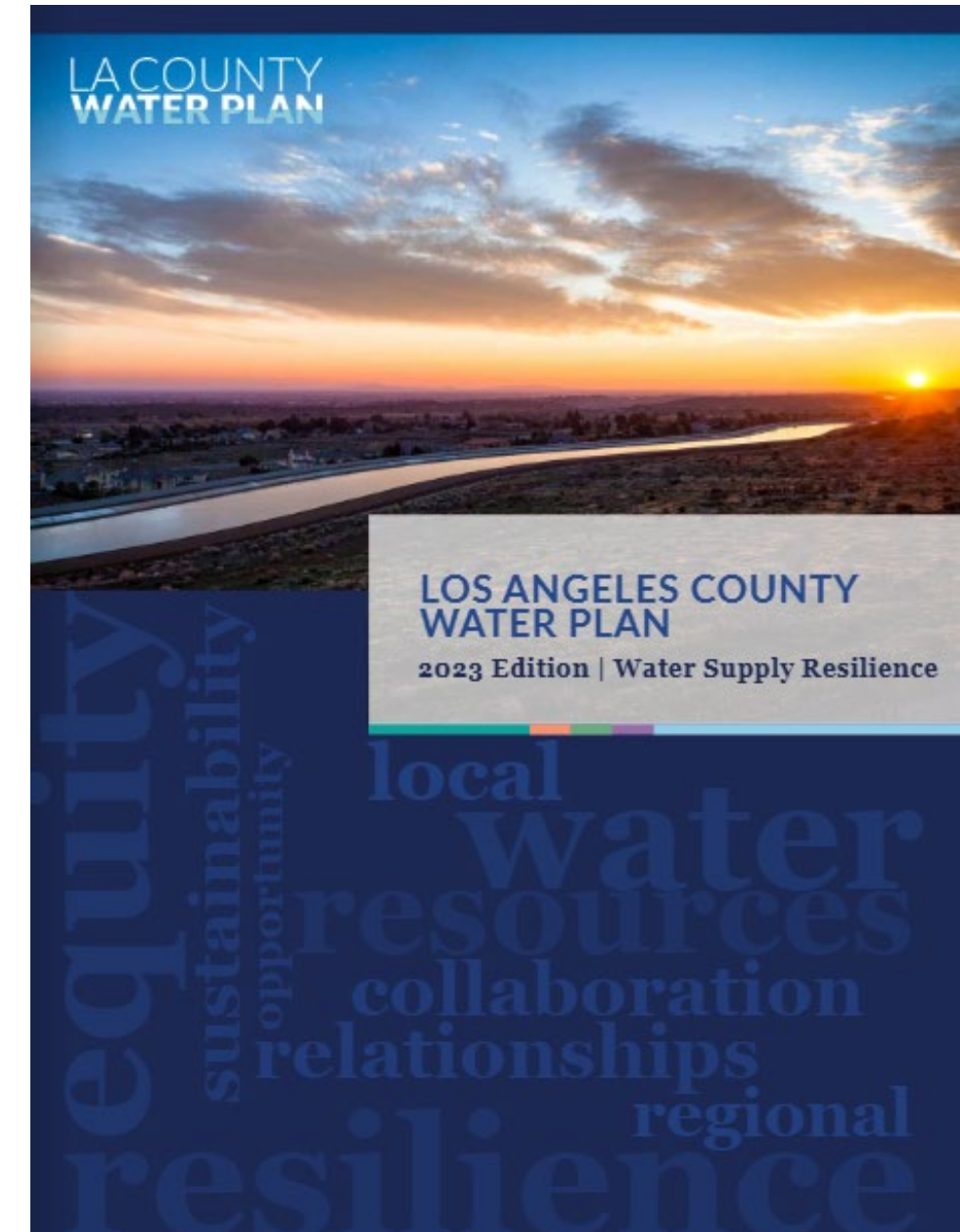
Donation & Recovery
Outreach Program



LA County Chief Sustainability Office
Environment • Economy • Equity

Water Conservation

- LA County Water Plan: <https://lacountywaterplan.org/Home>
- Water 4 LA: <https://waterforla.lacounty.gov/>





LA County Chief Sustainability Office
Environment • Economy • Equity

Southern California REGIONAL ENERGY NETWORK

The Southern California Regional Energy Network (SoCalREN) was created to harness the collective power of residents, businesses and the public sector to achieve an unprecedented level of energy savings across Southern California.



Public
Agencies



Residential



Workforce
Education
and Training



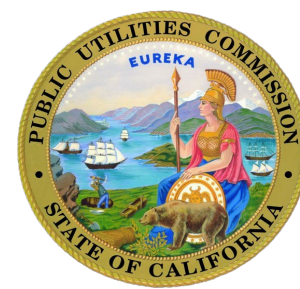
Finance



Agriculture



Commercial



The SoCalREN Public Agency Programs are administered by the County of Los Angeles and funded by California utility ratepayers under the auspices of the California Public Utilities Commission. Learn more at socalren.org.



Projects Eligible for SoCalREN's Energy Efficiency Cash Incentives

- **Cash Incentive-Based Projects**

Whole-building projects achieving ~10% energy savings-receive hands-on energy coaching and pre- and post-construction support.

- **Direct-install no cost measures for underserved facilities.**

- **Custom Projects**

Projects that are neither NMEC nor deemed, incentives are based on engineering calculations of energy savings specific to your project.



*Underserved = low-income, rural, and disadvantaged communities;

Visit socalren.org/agencies/underserved to determine if your agency's facility is considered underserved.



Energy Resilience Action Plan (ERAP) Program



Provides a comprehensive roadmap for near-term to long-term energy resilience strategies



Leverages technical analysis to develop recommendations for capital projects that will strengthen the energy resilience of each community



Empowers agencies to be energy resilience leaders by leveraging accurate data and engaging with community stakeholders to inform planning decisions

Solar & Battery Backup

Education and programming

Free wifi

Emergency food, water and supplies

EV charging

Shaded seating and community space

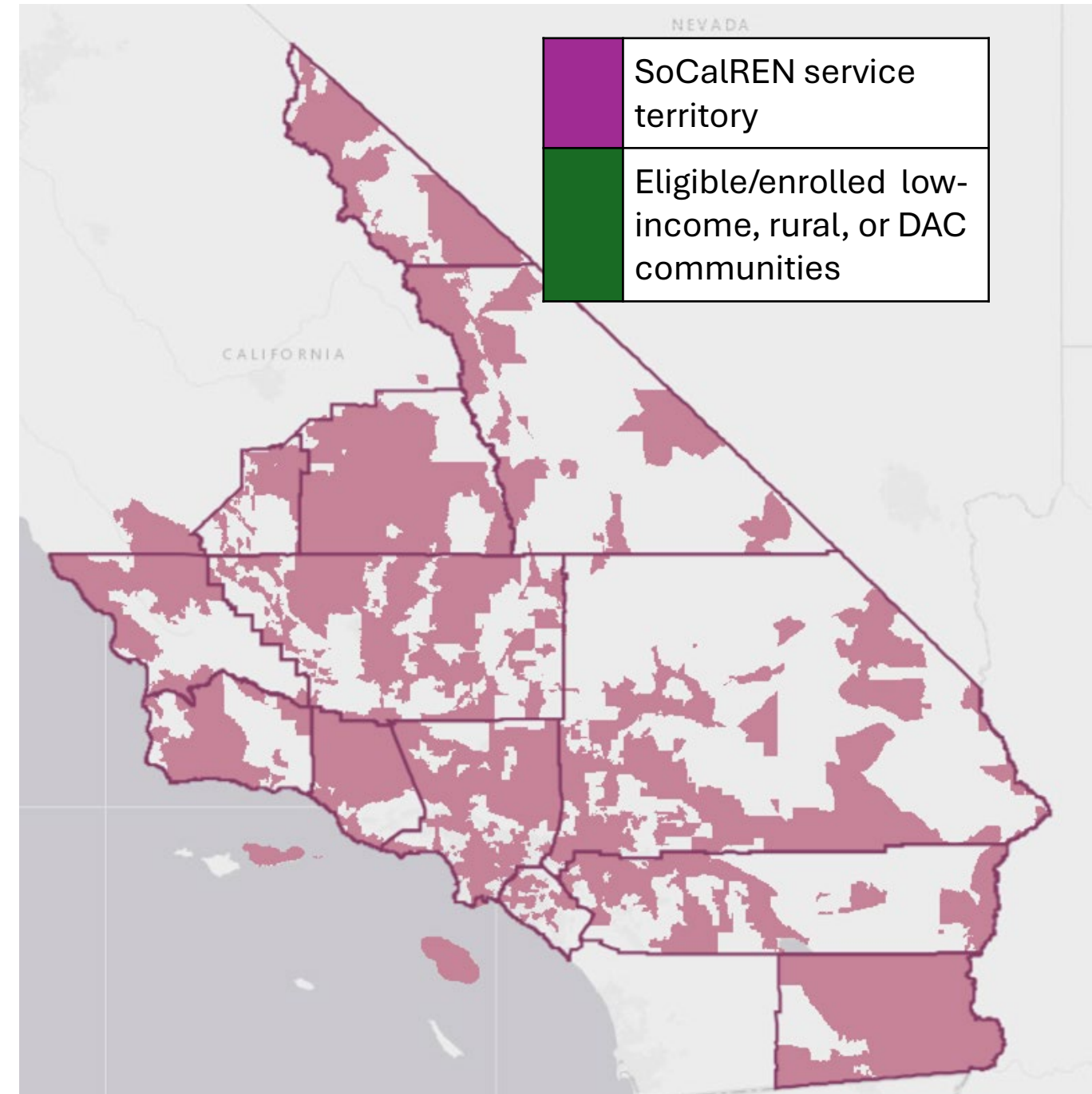
What is a Community Resilience Center/Hub?

- A gathering space for the community
- A cooling center during a heat wave
- A power source to charge electronic devices during a power outage
- A shelter with food and resources during an emergency



Low-income, Rural, & Disadvantaged Communities

- SoCalREN can help communities save energy and money.
- Defined based on:
 - 25th percentile of CalEnviroScreen 3.0
 - California Department of Housing and Community Development “very low income communities”
 - Title 1 schools
 - Rural-urban commuting area rural communities





SoCalREN's Revolving Savings Fund (RSF)

Provides the **funding** your community needs to make your energy efficiency project a reality.

Offers an easy process, **0% interest rate**, five-year loan term, and relatively **quick allocation of funds**.



Contact your SoCalREN Project Manager to determine if your project qualifies for RSF.

Submit your RSF application with SoCalREN support to receive formal approval and reserve funds.

Receive a loan offer letter and obtain governing board approval.

Receive funding following governing board approval and signing of loan agreement.

Install your energy efficiency project.

Obtain utility rebates/incentives and On-Bill Financing (OBF), if applicable

Repay loan so the cycle can continue!

SOCALREN CONTACT:

Sulma Hernandez
Public Agency Program Manager
County of Los Angeles
Shernandez@isd.lacounty.gov



Los Angeles County Heat Action Plan

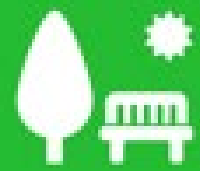
- Adopted on Feb 3, 2026 as the County's roadmap for a heat-resilient future.



Plan Purpose

- Provide a coordinated, countywide framework to address heat-related illness and other heat impacts
- Align County leadership with cities, community partners, and regional agencies
- Drive equity-centered implementation with clear goals, strategies, and actions





Goal 1: Cool Outdoor Spaces

Goal Statement

GOAL 1

Create cooler, more livable outdoor environments through strategic shade, green infrastructure, and heat-reducing surfaces that protect residents and ecosystems while fostering vibrant community spaces.

Strategy 1.1	Improve shade equity in the public right-of-way to reduce overexposure to heat and promote vibrant street life.
Strategy 1.2	Alleviate chronic heat burden in highly paved urban areas through urban greening, design, and smart surfaces.
Strategy 1.3	Integrate cooling features into outdoor recreational and gathering spaces.
Strategy 1.4	Ensure that County assets, especially trees and vegetation that provide cooling benefits in public corridors and gathering spaces, can thrive long-term in the face of rising temperatures.



- 2045 Target: All transit stops have functional shade at 3pm



Goal 2: Create Heat-Resilient Indoor Spaces

Goal Statement

GOAL
2

Promote safe, efficient design and operations for the buildings where County residents live, work, and learn.

Strategy 2.1	Protect renters and heat-vulnerable residents from excessive levels of heat in the home and congregate facilities.
Strategy 2.2	Maximize the adoption and use of passive cooling strategies and energy-efficient operations in both public and private buildings.
Strategy 2.3	In coordination with utilities, promote electricity affordability, clean energy access, and energy resilience.

- 2045 Target: No increase in sleep disruption due to heat





Goal 3: Expand Heat Safety Communications and Programs

Goal Statement

GOAL 3 Build robust community networks and emergency management operations that promote heat safety and connect vulnerable people to cooling resources.

Strategy 3.1	Improve access to, and utilization of, cooling locations during extreme heat.
Strategy 3.2	Build the capacity of community organizations and other implementation partners to support resident and worker heat safety.
Strategy 3.3	Increase public awareness of heat risk and personal strategies for staying cool and safe.
Strategy 3.4	Improve the capacity of the health system to mitigate, prepare for, and respond to heat risk.



- 2045 Target: 30% increase in cooling locations

Implementation

- Informational resources to support city action:
 - Data Viewer & User Guide
 - City Implementation Pathways Framework
 - Public Engagement Toolkit
- County partnerships to advance heat preparedness for the Games:
 - ShadeLA
 - Metro Heat Guidebook
 - Expansion of heat emergency communication network & cool spots



Thank You

<https://cso.lacounty.gov/ourcounty-plan/cso-current-initiatives/county-heat-action-plan/>



LA County Chief Sustainability Office
Environment • Economy • Equity

Heat Mitigation: Mobile Water Stations, Shade Structures, Heat Messaging

LA Metro Office of
Sustainability Policy

Susana Reyes



888 FOR 288

LA County Coordination and Planning
for the 2028 Olympic & Paralympic Games

GME Heat Mitigation Subcommittee

Workstream: Heat Mitigation for World Cup and LA28

Lead: Susana Reyes, DEO, Office of Sustainability Policy





Deliver safe, inclusive, accessible, and climate-resilient transportation and mobility for FIFA 2026 and LA28 Games

- 1. Design for Thermal Comfort:** Prioritize shade, cooling, and hydration across venues, transit stops, and public spaces to protect spectators, transit riders, workforce, and event planners from extreme heat episodes.
- 2. Advance Equitable Cooling Access:** Ensure stakeholders and frontline communities along or near games venues have access to cooling resources like cooling tents, shaded rest areas, and hydration stations.
- 3. Embed Heat Response Across Workstreams:** Make heat mitigation a shared responsibility across transportation, planning, and emergency operations—guided by real-time data and community input.

TOP 3 GOALS



 **Prevent heat-related incidents**—Conceptualize and recommend heat mitigation solutions at priority park & ride locations, transit corridors, and mobility hubs.

 **Seamless Multi-Agency Coordination** – Deploy a multi-agency heat awareness campaign and develop a unified heat mitigation guidebook with curated resources for spectators, transit riders, event planners, and workforce for heat awareness and illness prevention.

 **Legacy Beyond the Games** – Transform temporary solutions into permanent climate-resilient assets after the games.

Why Extreme Heat Matters When You Travel

Understanding the Risks While Traveling in the Heat

Across Los Angeles, we are feeling the impacts of climate change with more frequent and intense extreme heat days and heat waves. [Los Angeles County Public Health](#) and [UCLA](#) project that the number of extreme heat days will increase across the region in the future.

Extreme heat is not just uncomfortable, it can be dangerous to one's health and wellbeing, particularly to vulnerable groups. Staying safe while traveling on extreme heat days requires extra planning and care.

Who May Be More at Risk During Extreme Heat

Some people may face higher risk during extreme heat, including:

- Older adults and young children
- Pregnant women
- People with disabilities or access and functional needs
- Outdoor workers and people traveling longer distances
- Individuals with underlying health conditions
- Individuals taking certain medications
- Athletes who may suffer from overexertion
- People who are not accustomed to extreme heat

Heat can be deadly!

Did you know that extreme heat is the number one weather-related cause of death in the United States?

Being informed and prepared can lower your risks!

Early action saves lives.



HEAT MITIGATION Concept Zone



Canopies

10'x10' Tent or 10' x20" Tent. Also includes an attached wayfinding panel that would be adjustable per location.

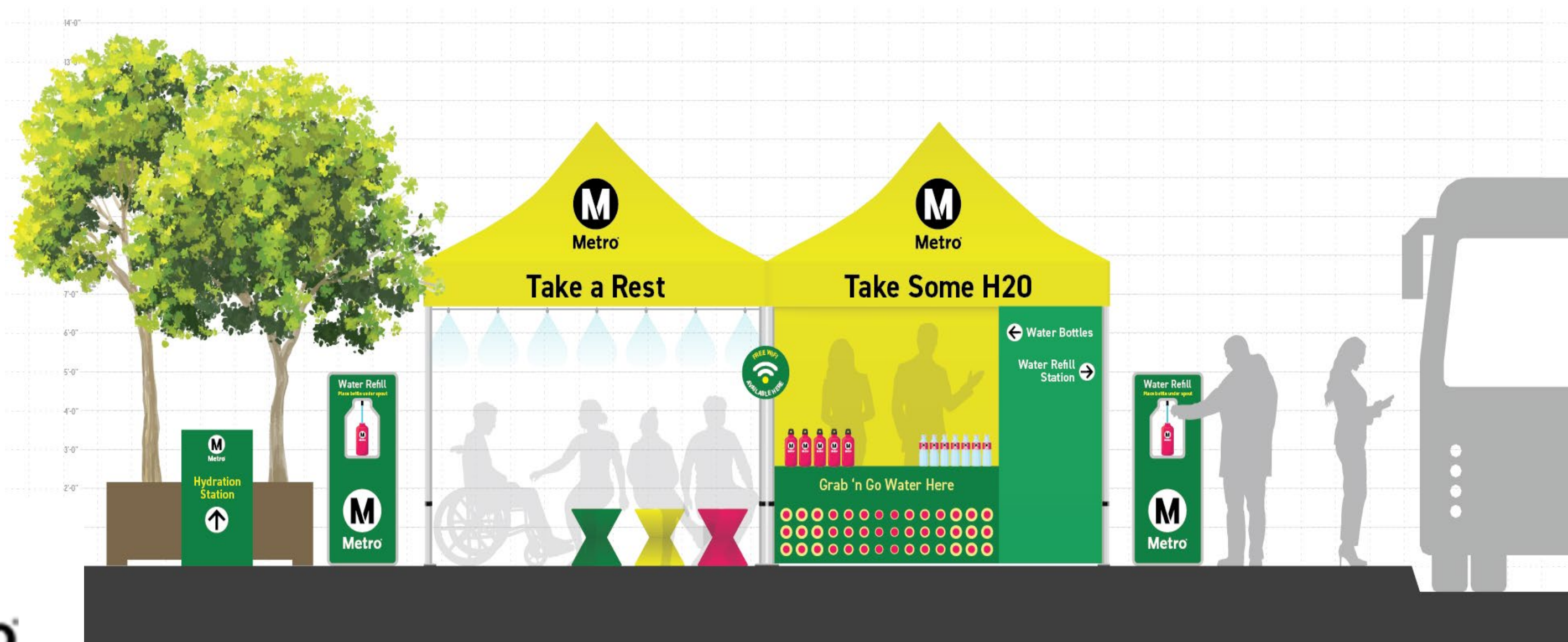
Multi-User Water Refill:

Temporary water dispenser to refill water bottles. Mobile units can be quickly removed or replaced when needed.

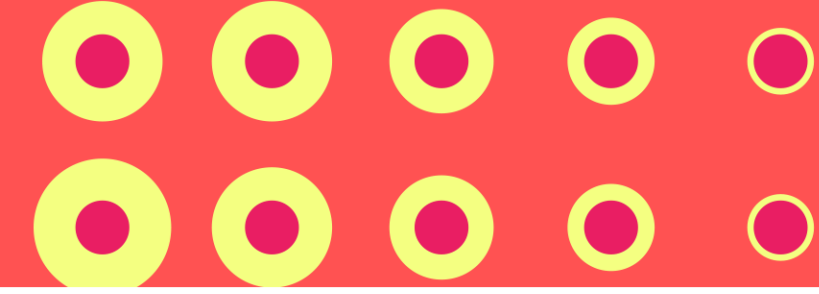
NOTE: Mobile unit will be located within ROW but not obstructing pedestrian flow.

Misting Tent:

Tent with misters and movable seating to provide temporary rest for patrons.



Mobile Water/Hydration Stations



2025 Club World Cup - LA Rose Bowl



Massachusetts Water Resources Authority Portable Water Fountain



US Open - Pinehurst, NC

Shade Structure Concepts



Small/Medium Locations: Canopy tents or roll-off trailers

Large Locations: Faceted pavilion canopy to shade complete public space



2024 Paris Olympics

Cooling Stations



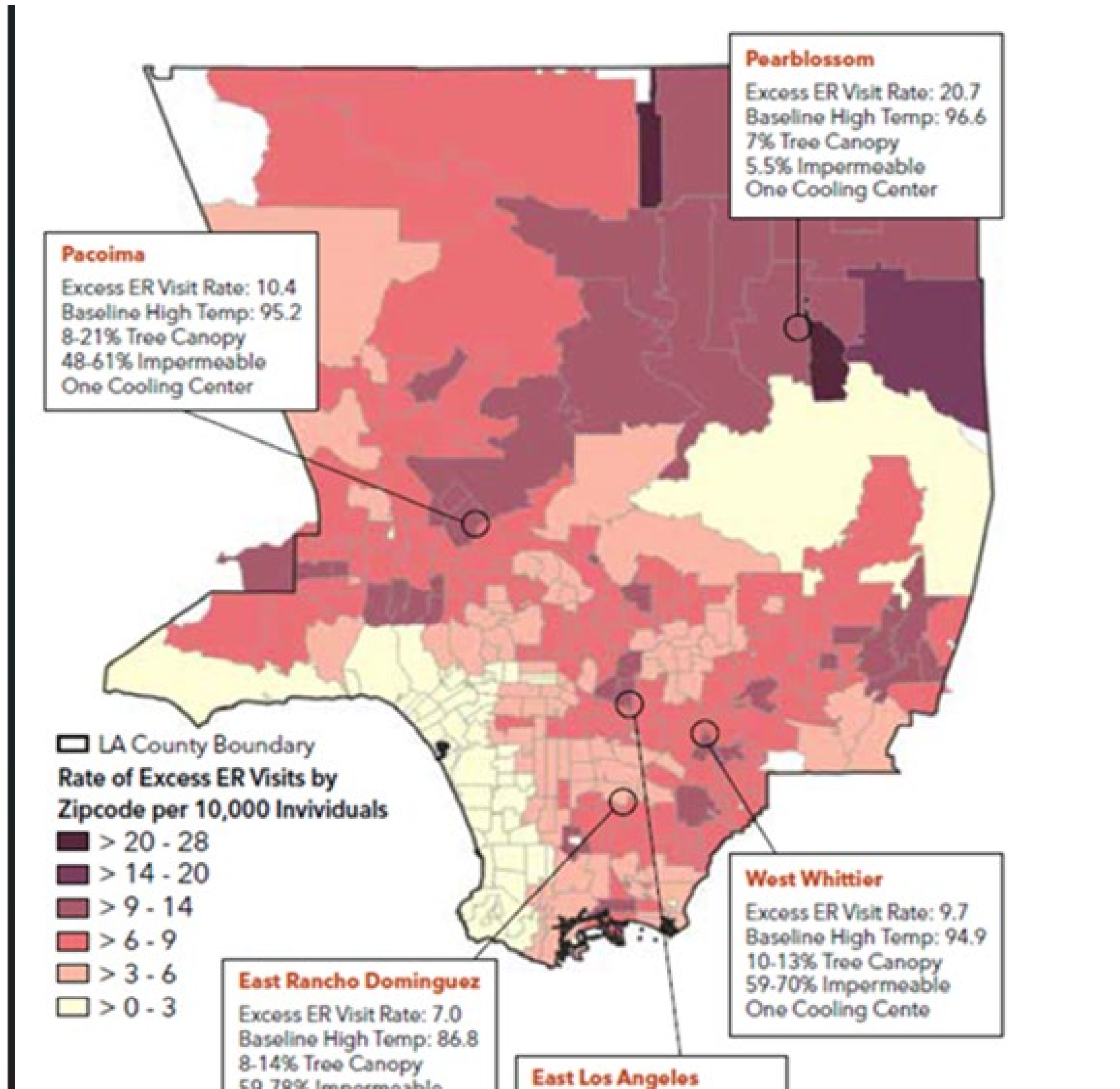
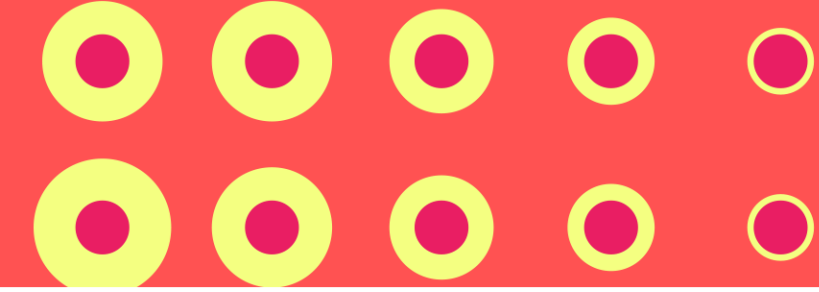
2025 Club World Cup - LA Rose Bowl



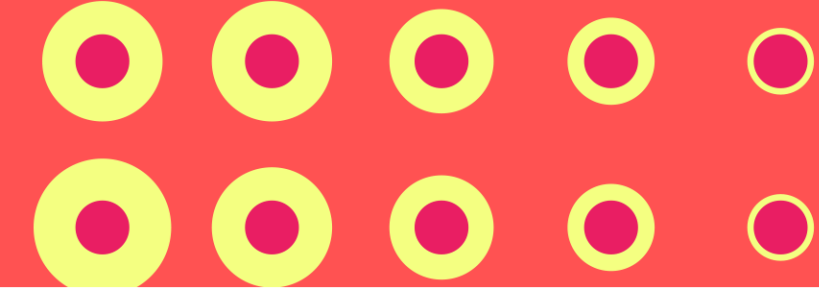
2025 Lollapalooza



HEAT VULNERABILITY ASSESSMENT MAP



HEAT MITIGATION PRIORITY LOCATIONS



WC Games Enhanced Transit Service (WCGETS)

- El Camino College
- Hawthorn/Lennox
- Crenshaw
- Harbor Gateway Transit Center
- North Hollywood
- Pierce College
- Union Station
- LAX/MTC

SOFI

- Intermodal Transit Facility Parking Lot
- Manchester/Prairie Lot
- Intuit Dome

FanFests

- Union Station
- Exposition Park
- Additional Watch Parties (TBD)

WCGETS Locations

Expected Usage*

El Camino College	1820
Hawthorn/Lennox	240
Crenshaw	360
Union Station**	540
Intermodal Transit Facility Lot	Up to 14,000 passengers
Manchester/Prairie Lot	Up to 1,800 passengers

*represents vehicle parking - use x2.5 multiplier for rider count

**Union Station will be activated throughout the World Cup. Expected Parking and associated rider count is undercounted and represents GETS projections

Metro Heat Solutions



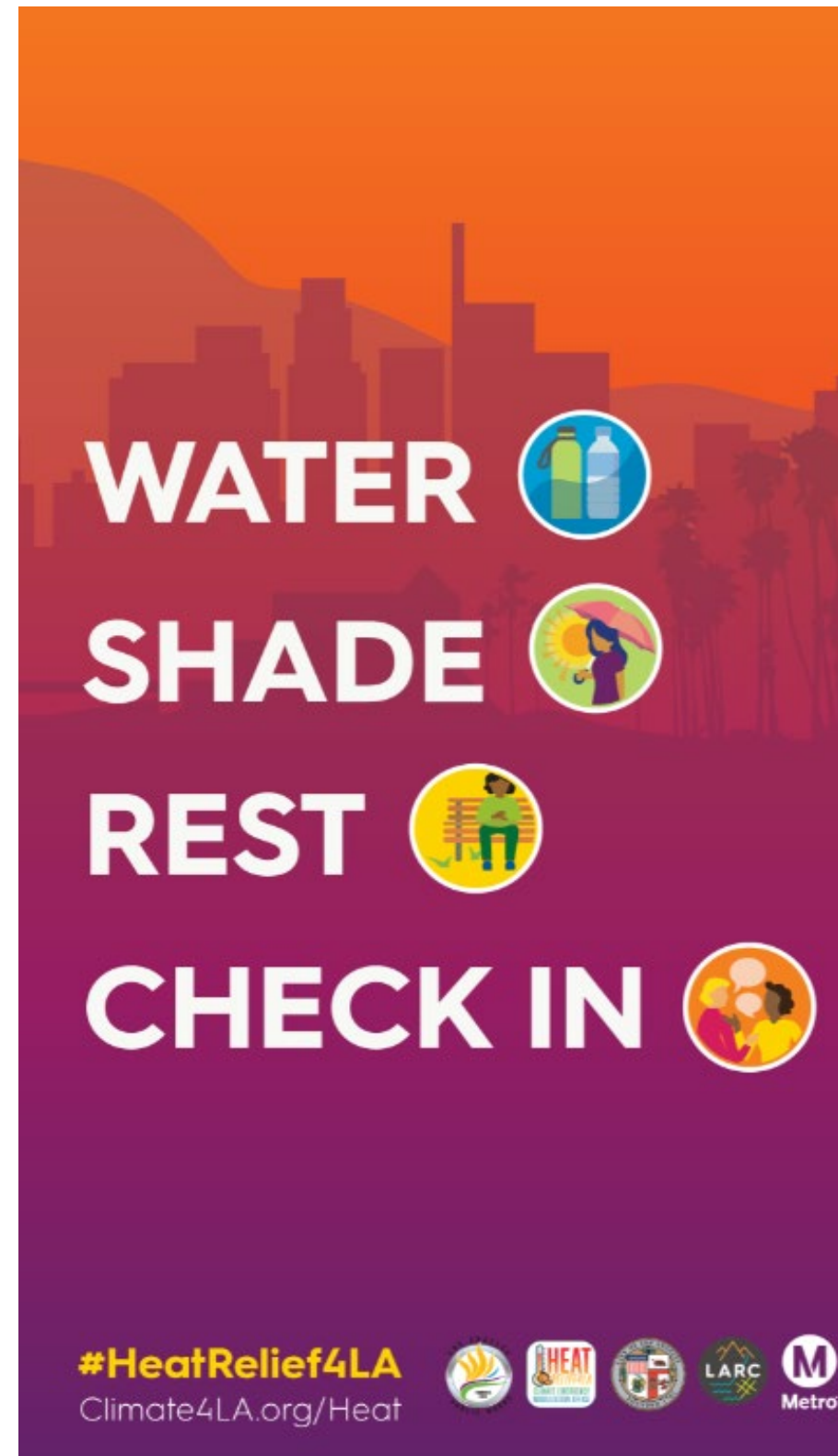
Hydration Stations

- Requisition started (REQ62296). Expected turnaround for procurement 2-3 weeks.
- Sponsorship Funding for hydration stations are being reviewed by LADWP. Partnering with Kit of Parts Pilot and Station Activation for activations at specific locations during non-game days wherein hydration units will be deployed.

Heat Mitigation Campaign & Guidebook

Currently in the content development phase

- Gathering feedback from partners - Metro Marketing and Communications, Accessibility, Corp Safety, LACDPH, StreetsLA, LARC, Climate Resolve, LADWP
- Training material will be developed for spectators, Metro workforce and volunteers, and event organizers.



SAMPLE MESSAGING:

OVERHEATING?

Don't push through it.
Cooling & relief here.

THIS HEAT HITS HARD

Take a break.
Cool down here.

Less waiting, more hydrating.

Don't wait until it's too late.
Cooling and relief is available here.

THINK YOU'RE HOT?

You probably are.
Cooling & relief here.

HEAT MITIGATION GUIDEBOOK



The guidebook will be a highly graphical and educational resource focused on preparing transit riders, workforce, spectators, and athletes from heat-related illnesses.

Using a QR Code, heat prevention tips will be made available as well as a list of resources like cooling centers, Metro priority transit venues, and hydration stations.

**Heat ready:
Travel smart.
Stay safe.**

For riders, workers and visitors navigating transit during extreme heat, here's your guide to hydration, shade, and safe travel across the Metro system.

M Metro

2024 © Metro

Bus Shelters Ads

STAY HEALTHY IN THE HEAT

HEADED OUT IN THE HEAT?

- DRESS LIGHT.
- BRING WATER.
- AVOID THE SUN.
- GET HELP.

COOLING AND RELIEF HERE

M Metro

STAY HEALTHY IN THE HEAT

FEELING HOT?

- TAKE A BREAK.
- FIND A SHADE.
- BRING WATER.
- GET HELP.

COOLING AND RELIEF HERE

M Metro



HEAT MITIGATION & SHADE LA

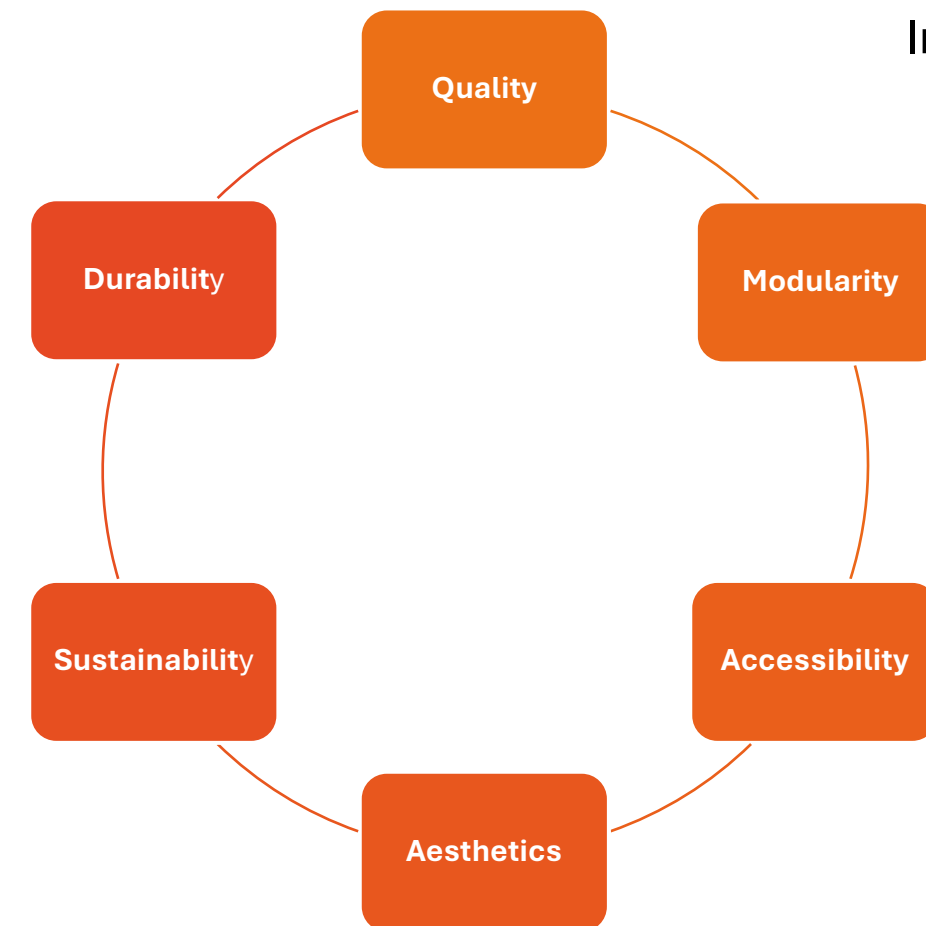


- *Metro moves people—but shade keeps them alive. Shade keeps them comfortable and healthier. As we prepare for the World Cup 2026 and the LA28 Olympics, we have a rare chance to design not just transit routes, but climate-safe journeys. And shade is at the center of that story*
- *Extreme heat isn't just uncomfortable—it's dangerous.*
- *And let's be real: no one wants to stand in the blazing sun waiting for a bus or a train. That heat can get to you – fast.*

Organized by [USC School of Architecture](#), [Los Angeles Metro](#), and our ShadeLA team, this competition brings together young designers across L.A. County to imagine modular shade structures ahead of LA28 and other major sporting events coming to L.A.; advancing ShadeLA's mission to make L.A. cooler—one shaded space at a time. We're thrilled to welcome 137 teams from 17 schools in the L.A. area to our 2025-2026 cohorts



Image by ShadeLA



Characteristics for Shade Design Competition 40



Top 3 Challenges



 **Multi-Level Complexity & Timing** – Meet jurisdictional requirements and align goals, timelines, and operational strategies. Jurisdictional review and permitting requires streamlining.

 **Funding & Sponsorship Limitations** –Need to identify solutions based on priority criteria and secure sponsorship commitments. Metro heat mitigations solutions are unfunded. Will need public-private partnerships to scale up for LA28.

 **Dynamic Heat & Crowd Conditions** – Adapt to unpredictable weather and crowd surges and create a heat mitigation playbook for transit riders, workforce, and spectators. Identify community partners for outreach and awareness.

Call to Action: Move from temporary heat mitigation solutions to Permanent Resilience



USC



Climate
Resolve

UCLA



METRO
LINK

LADOT



Metro Heat Resilience Framework

From Event Readiness to Permanent Climate Infrastructure

1. Built Environment Infrastructure

- Permanent hydration
- Structural shade
- Cool surfaces
- Solar canopies

2. Mobility & Operations Integration

- Heat mapping
- Workforce standards
- CAAP integration

3. Partnerships & Co-Funding

- Utilities
- Sponsorship model
- Urban forestry

4. Accountability & Performance

- Shaded stop %
- Hydration nodes
- Equity metrics

Temporary vs Permanent: The Resilience Shift

■ TEMPORARY RESPONSE

- Rental hydration trailers
- Pop-up shade tents
- Seasonal deployment
- Event-based funding
- Reactive approach

■ PERMANENT RESILIENCE

- Hard-plumbed refill stations
- Engineered shade structures
- Solar shade canopies
- Cool pavement standards
- Budgeted capital investment

→ FROM EVENT READINESS → TO CLIMATE INFRASTRUCTURE →

*Temporary mitigation protects people during events.
Permanent resilience protects communities every day*

Q & A

Contact:

Susana Reyes, Deputy Executive Officer

ReyesSu@metro.net

ShadeLA: Opportunities for Participation

ShadeLA

Edith de Guzman
Marianna Babboni



888 FOR 288

LA County Coordination and Planning
for the 2028 Olympic & Paralympic Games



SHADELA: OPPORTUNITIES FOR PARTICIPATION

88 for 28 Convening
February 26, 2026

*Marianna Babboni, USC Dornsife Public Exchange,
babboni@usc.edu*

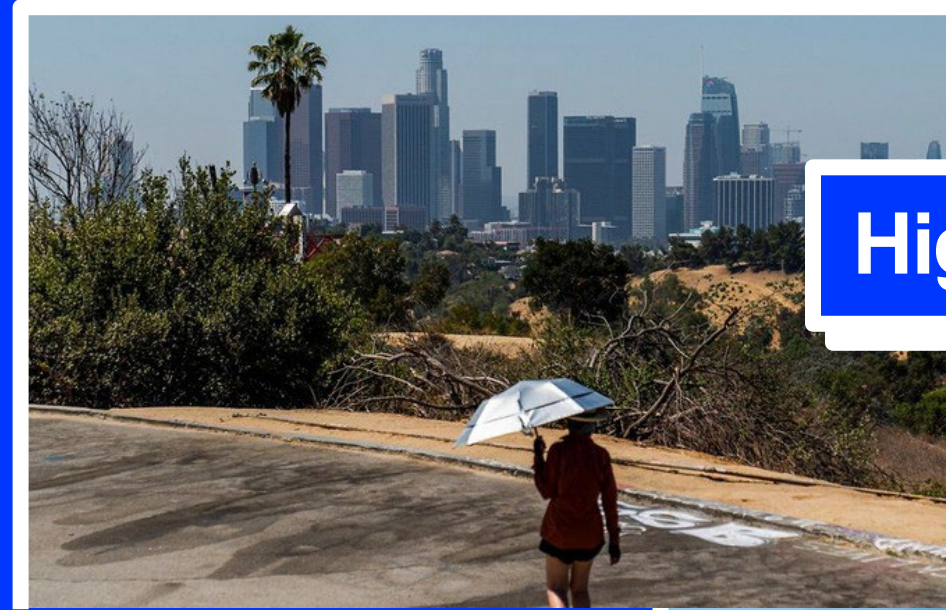
*Edith de Guzman, UCLA Luskin Center for Innovation,
eb3@ucla.edu*



Launched July 2025

SHADE

A people-powered movement to make LA cooler—one shaded space at a time



High Need



High Visibility



High Impact

SOFTBALL

15 Million People

A once-in-a-generation crowd is coming to Los Angeles:

- Concacaf Gold Cup (passed)
- FIFA Club World Cup
- NBA All Star 2026
- Women's US OPEN
- NCAA March Madness
- FIFA World Cup 2026
- NFL Super Bowl 2027
- Olympics
- Paralympics

MOMENT



ShadeLA Coalition

Organizing Partners



Participating Entities



Community Partners



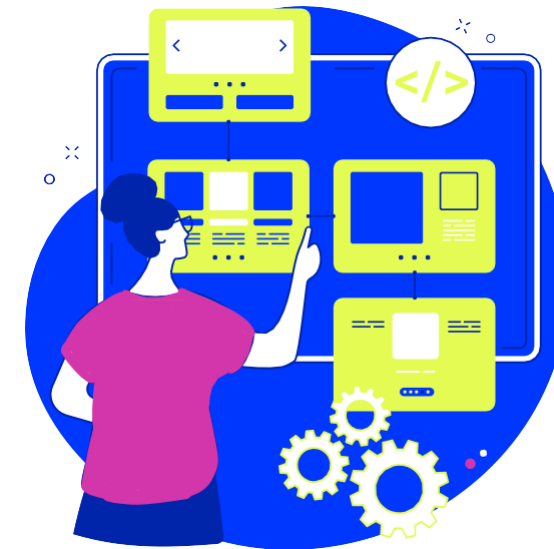
Campaign Goals



01 Expand Built & Natural Shade



02 Preserve & Maintain Existing Shade

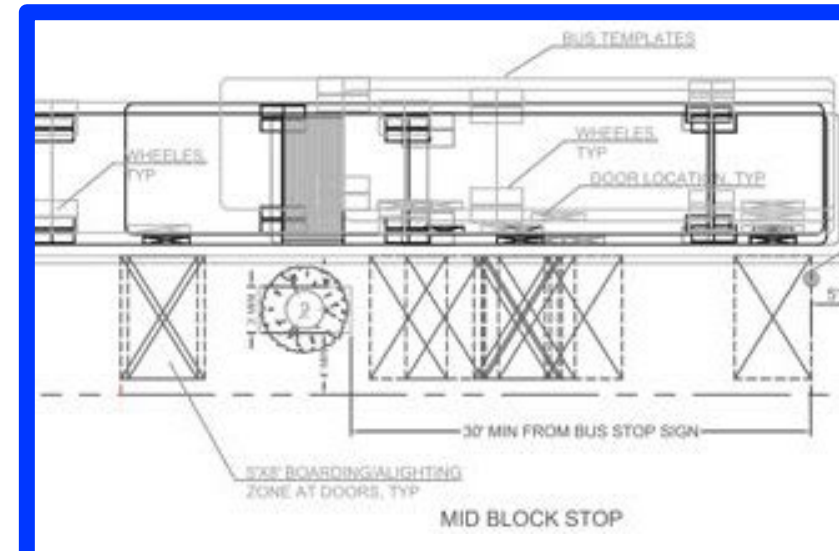


03 Monitor & Guide Progress



04 Inform & Mobilize People

Campaign Activities



PLANNING

- Shade mapping & prioritization tools
- Environmental & health analysis of shade impacts

POLICY

- Permitting reform opportunities to make it easier to add both built & natural shade

DESIGN

- Annual Shade Zones Design Competition
- Pre-approved templates

ENGAGEMENT

- Survey of Shade
- Art exhibits, events, & storytelling
- Community-facing Resource Guides

Early Wins

Since launching in July 2025

Shade Planning

- Shade Map tool to identify low shade areas across our region and guide shade planning
 - Noon
 - 3pm
 - 6pm



Created by:

UCLA

Luskin Center
for Innovation



American
Forests™



Early Wins

Since launching in July 2025

Shade Design

- Shade Zones x LA Metro Design Competition launched & registered 340 students from 17 schools
- ShadeLA x Festival Trail built a shade prototype structure for larger public spaces
- ShadeLA x USC Architecture built a shade prototype structure for public parklets

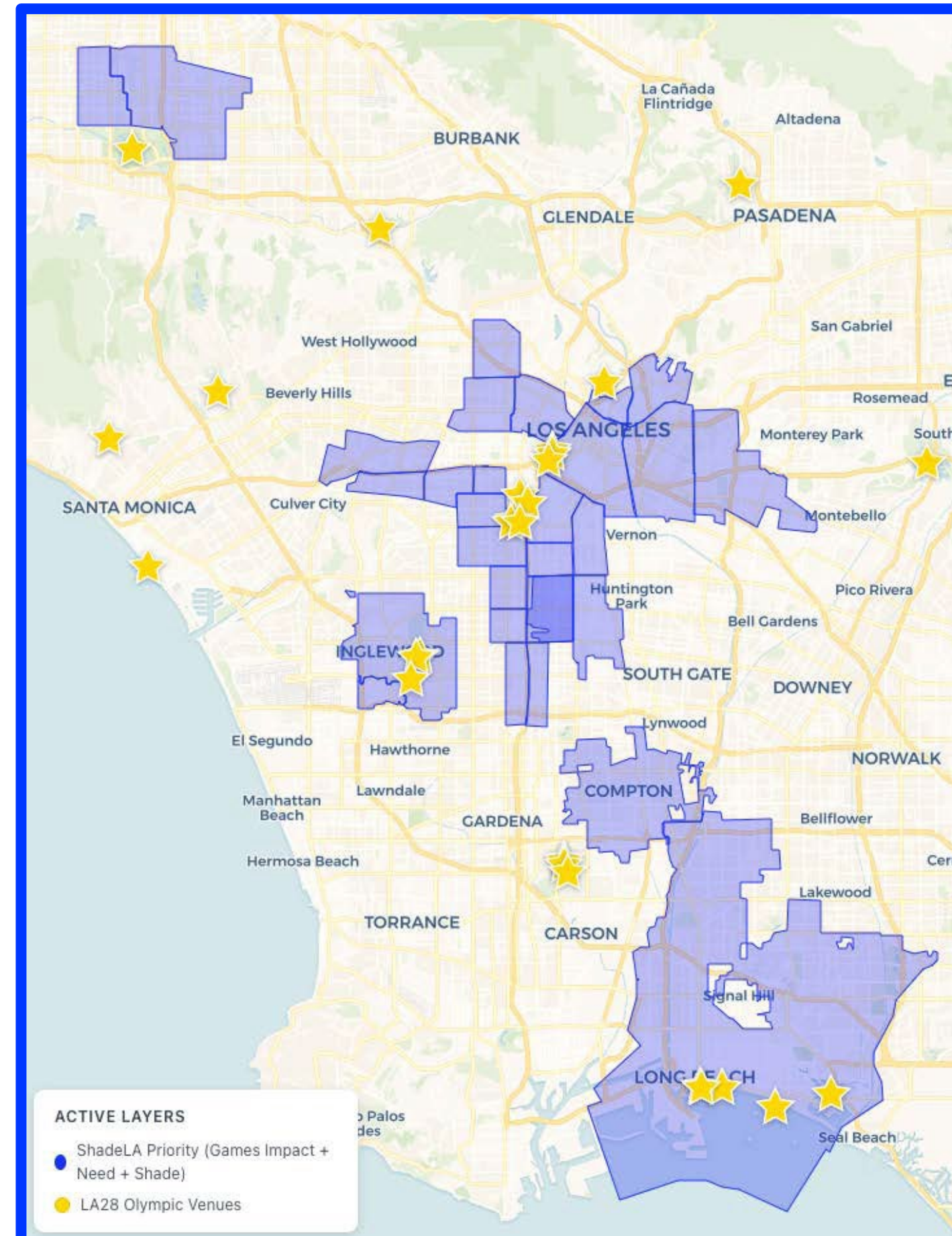


Next Steps

Spring 2026 Priorities

ShadeLA Game Plan

- 1st Phase: Community Priorities (Games Impact + Need + Shade)
- 2nd Phase: Pilot Shade Projects & USC/UCLA Athlete Engagement (ShadeLA Legacy Fund)





**CREATING A LEGACY WHERE EVERYONE
CAN LIVE, WORK, AND ENJOY *A COOLER
LOS ANGELES.***

LET'S WORK TOGETHER!

shade-la.com

BACK THE MOVEMENT FOR A

1984

COOLLER

LOS

Make a difference
people see, feel,
and remember

ANGELLES

2028

shade-la.com

Q&A PANEL



888 FOR 288

LA County Coordination and Planning
for the 2028 Olympic & Paralympic Games

CLOSING & NEXT STEPS

Kelly Quinn
LA County Chief Executive Office



888 FOR 288

LA County Coordination and Planning
for the 2028 Olympic & Paralympic Games

Upcoming Events

LA County's Major Events Website

<https://lacounty.gov/olympics/>



Next “88 for 28” Convening – Spring 2026

- If you want a staff colleague to be added to the mailing list for future meetings, please send us a note at sporting.events.planning@ceo.lacounty.gov

Government Connections Seminar – March 25, 2026

- 93 consulates located in LA County are invited to attend, along with the Mayors of each of the County's 88 cities
- Opportunity for Mayors to connect with leaders of other countries, many of whom will be looking for partnerships for hospitality houses for the 2028 Games



888 FOR 288

**LA County Coordination and Planning
for the 2028 Olympic & Paralympic Games**

**Thank you
for joining
us!**