



Chief Executive Office
COUNTY OF LOS ANGELES

Prevention Services Task Force Meeting

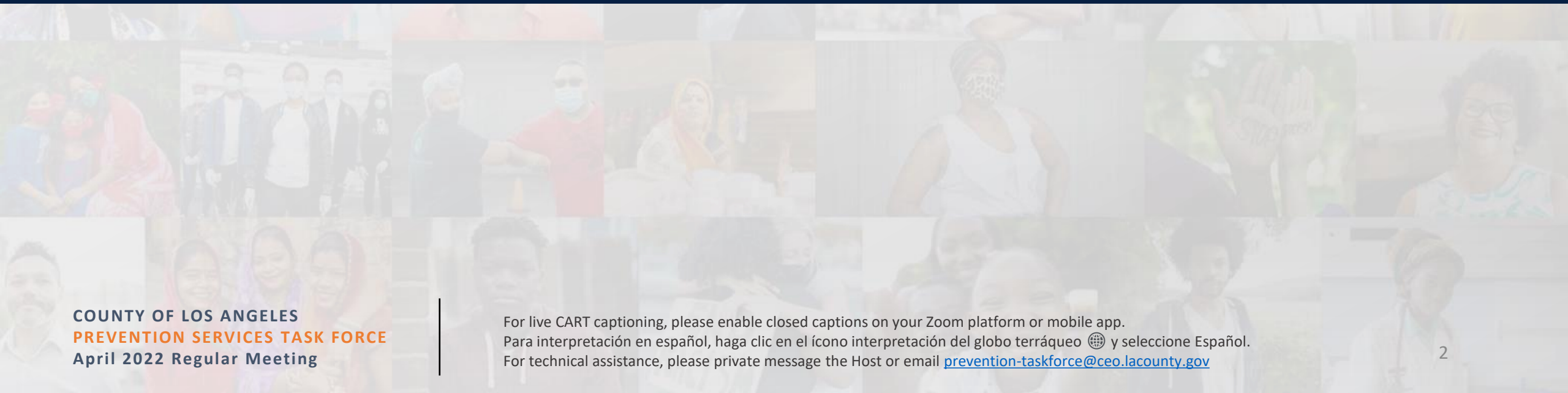
April 22, 2022





ITEM 2

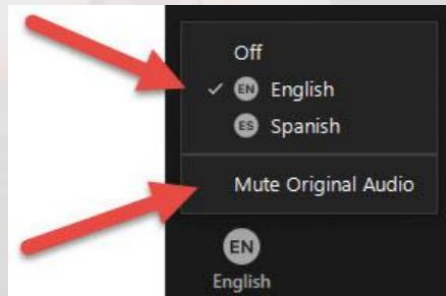
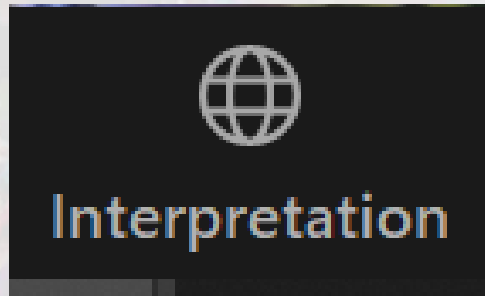
MEETING DISCLOSURES



INTERPRETACIÓN EN ESPAÑOL

Para interpretación en español, haga clic en el ícono interpretación del globo terráqueo y seleccione Español.

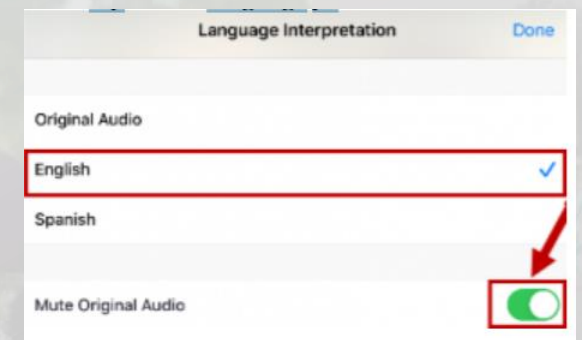
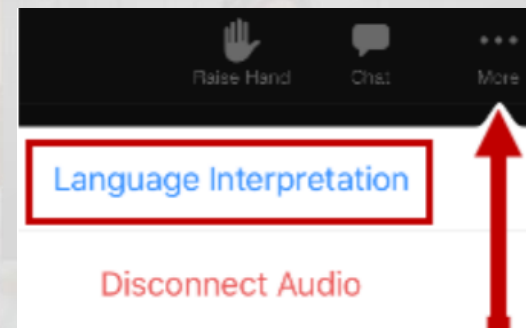
(For Spanish interpretation, please click on the globe (interpretation) icon and select Spanish.)



Teléfono inteligente:


Toque el botón "..." Más y seleccione Interpretación de idiomas. Luego toque el idioma "Español".

(Tap the "... " More button and select Language Interpretation. Then tap on the language "Spanish.")




LIVE CART CAPTIONING

Desktop app:

For live CART captioning, please enable the **Closed Captions**  function

Smartphone:

For live CART captioning, please go to **Settings**  Tap **Meeting**. Toggle **Closed Captioning** to on.

- **This meeting is being recorded:** for the purpose of meeting minutes and to make the recording available online. By remaining in this meeting, you consent to being recorded.
- **Chat is disabled:** This is a public meeting and subject to the Brown Act. Since conversations and statements on the chat are not visible to people on the telephone and who are unable to participate, the chat function is disabled; however, the host may send out broadcast messages in the chat when needed.
- For anyone experiencing online technical difficulties, telephone dial-in information will also be provided in the chat.

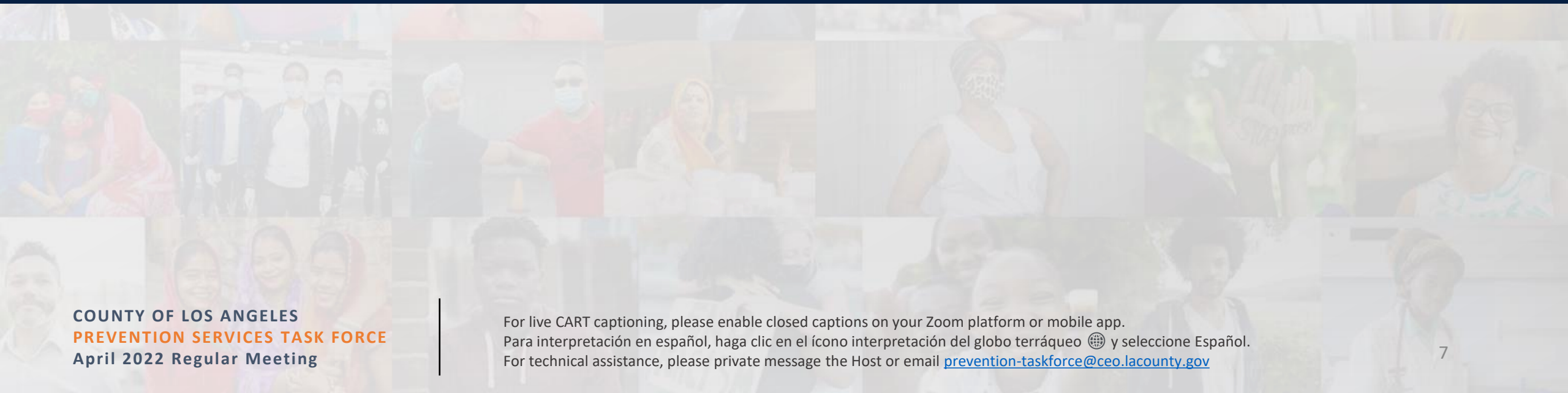


Land Acknowledgement



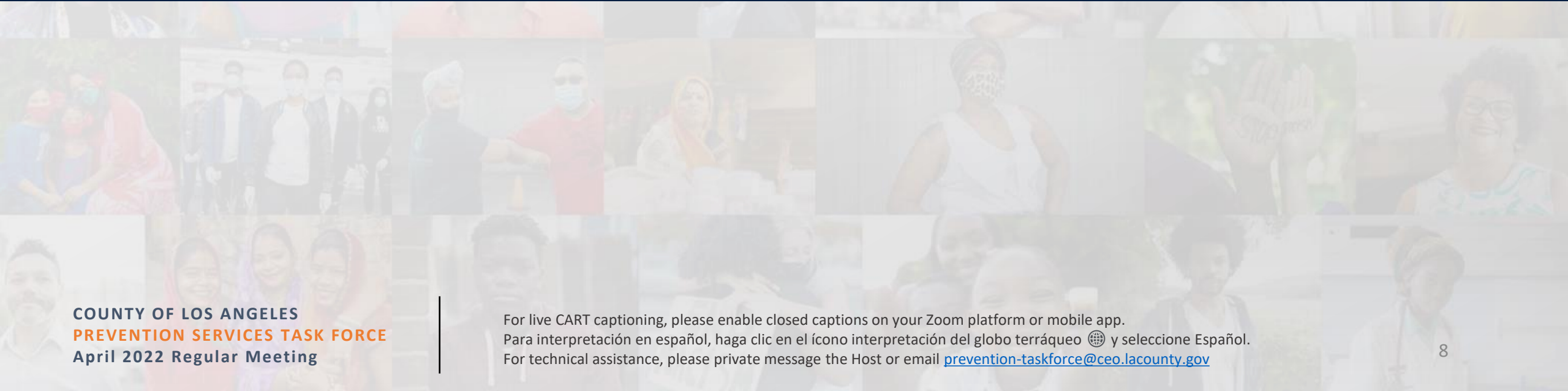
ITEM 3

WELCOME





ITEM 4 ROLL CALL



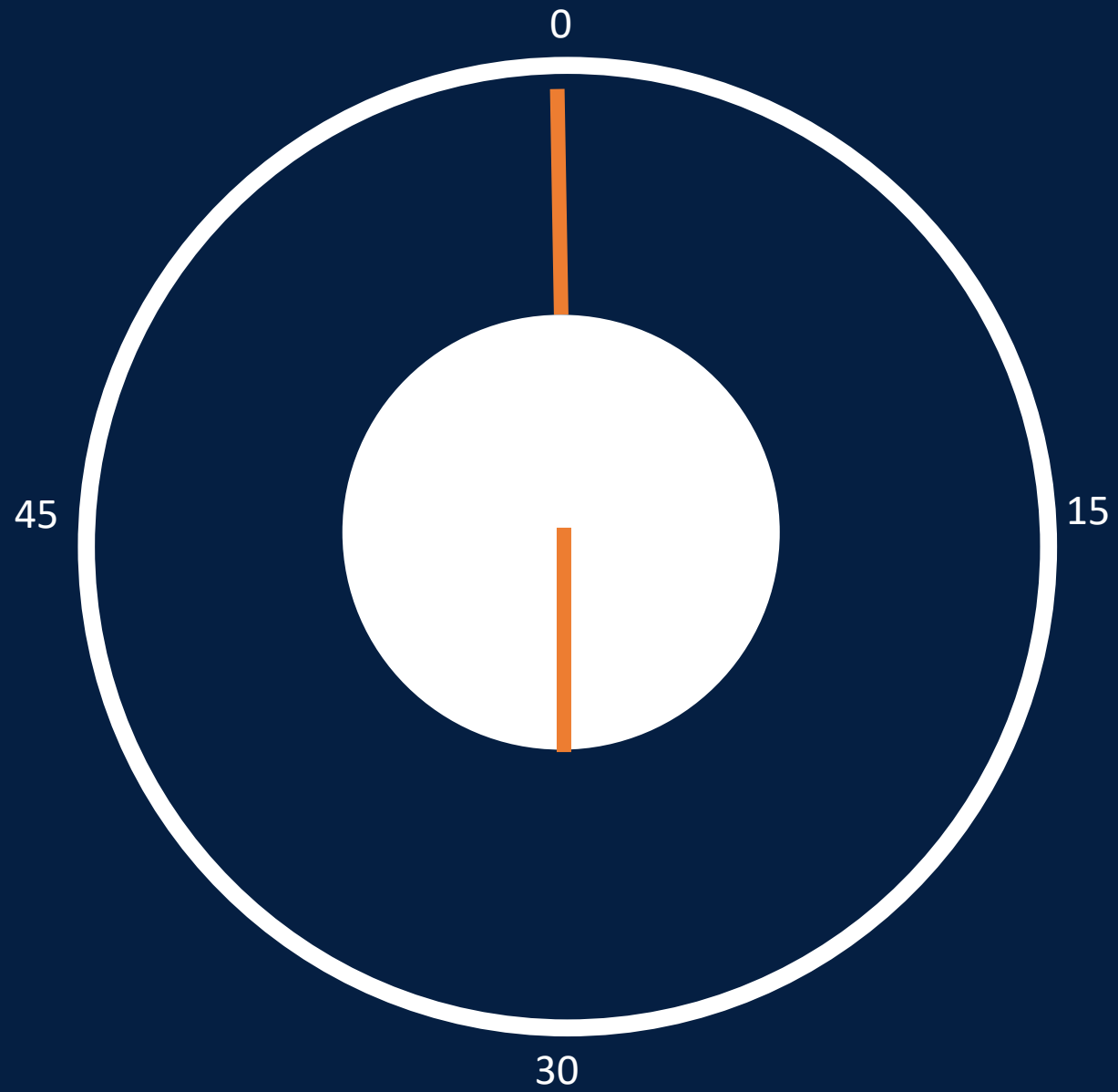


ITEM 5 **Public Comment**

To address the Task Force and provide public comment on **today's agenda items**, please use the *raise hand* feature on Zoom. Use the same feature to lower your hand after your comments.

If you are calling in by phone, dial *9 on the phone's dial pad to raise your hand. Dial *9 again to lower your hand. Dial *6 to unmute when told.

Each speaker is allowed up to one minute. Public comment on other Task Force-related subject matters is scheduled for the end of the meeting.





ITEM 6

Take appropriate action on the Minutes of the Prevention Services Task Force Regular Meeting of March 3, 2022



ITEM 7



Life Course Framework and Prevention Framework Overview

VARYING DEFINITIONS FOR PREVENTION

Source	Thriving (Promotion)	Primary	Secondary	Tertiary
Children’s Bureau (ACF/HHS): Framework for Prevention of Child Maltreatment	Not defined in framework	Universal: “directed at general population to prevent maltreatment before it occurs”	High risk: “targeted to individuals/families in which maltreatment is more likely”	Indicated: “targeted toward families in which maltreatment has already occurred”
National Institute on Drug Abuse (NIH): Diagnosis and Treatment of Drug Abuse in Family Practice (2022)	Not defined in framework	“Helping at-risk individuals avoid the development of addictive behaviors”	“Uncovering potentially harmful substance use prior to the onset of [problems]”	“Treating the medical consequences of drug abuse and facilitating entry into treatment”
CDC: Picture of America – Prevention (2016)	Framework mentions some complementary promotion strategies	“ Intervening before health effects occur”	“ Screening to identify diseases in the earliest stages, before onset of [symptoms]”	“ Managing disease post diagnosis to slow or stop disease progression through [treatment]”
U.S. Interagency Council on Homelessness, Attachment to Federal Strategic Plan (2010)	Discusses some promotion policies but acknowledges that limited funding resources in homelessness space force most interventions to be downstream	“Initiatives [that] prevent new cases” but also may go downstream for those “very likely to become homeless without assistance”	“Identifies and addresses a condition at its earliest stages” – “does not reduce number of cases, but treats conditions [early on]”	“Slow the progression or mitigate the effects of a particular conditions”
CDSS: Framework for Preventing Child Abuse by the Promotion of Healthy Families & Communities; March 2022 ACL on CPP	Not defined, but some promotion elements are included within primary prevention (e.g., improving social connections, transportation, play area access)	“Directed at the general population to strengthen communities and improve child well-being by focusing on SDoH”	“Offered to populations that have one or more risk factors associated with compromised well-being”	“Focus on families where child maltreatment has occurred ”

LA COUNTY DEFINITIONS

Source	Thriving (Promotion)	Primary	Secondary	Tertiary
LA County Commission for Children and Families: Prevention Workgroup Comprehensive Plan (2005)	Not defined in framework	Universal: “Target the general population,” “support families so they can provide the best possible care for their children”	High risk/inconclusive: “Target families who may have a special need for supportive services or who have been identified as being at higher risk for maltreatment”	Substantiated cases of maltreatment: “Target families when abuse/neglect has already occurred;” “try to prevent further maltreatment and reduce [its] negative consequences”
LA County DCFS/Casey: Prevention Initiative Demonstration Project (2009)	Framework includes some complementary promotion strategies	“Families not known to DCFS”	“Families known, but with no open case”	“Families already part of the system”
Children’s Data Network: LA County Dual System Report for DCFS and Probation (2021)	Not defined in framework	“Community-based supports for families”	“Services to mitigate and address risk”	“Continuing services for families during and after their involvement with [systems]”
Health Impact Evaluation Center for DPH/CEO-Homeless Initiative Measure H: Assessment (2017)	Not defined in framework	“Seeks to prevent onset of health conditions before they occur” (but uses “at-risk” examples e.g., benefits advocacy/eviction services)	“Seeks to detect health conditions in their earliest stages”	“Seeks to minimize the consequences of established health conditions”



PRESENTATION BY ARNOLD CHANDLER



Toward A Prevention & Promotion Framework for Government



Please see [attached slides](#).

PRIMARY PREVENTION

HOUSING & SHELTER



Tenant protections, rent control, unemployment insurance, employment leave protections, employment training and job seeking resources

EDUCATION & YOUTH



General public investment in youth activities, mentoring, and programs that decrease HS degree dropout and delinquency; community resources for parents and caregivers, including universal childcare and child tax credit

HEALTH



Public health information disseminated about health services, diseases, exercise, wellness, and other resources; checkups and vaccinations subsidized by government; physical wellness programs

SECONDARY PREVENTION

HOUSING & SHELTER



COVID eviction moratoriums and rental assistance, eviction assistance, housing discrimination protections, means-tested affordable housing (e.g., Section 8)

EDUCATION & YOUTH



Publicly-funded services, mentoring, tutoring, and other activities geared toward “at-risk” youth and communities; scholarships for underrepresented and/or low-income students

HEALTH



Community health workers and vaccine outreach for “at-risk” communities; mobile and free health clinics; subsidized treatment of non-life-threatening conditions that can worsen if left untreated; insurance protections covering preexisting conditions

TERTIARY PREVENTION

HOUSING & SHELTER



Emergency shelters, permanent or temporary housing for unhoused individuals

EDUCATION & YOUTH



Dropout reentry programs, youth diversion programs, foster care and transitional programs

HEALTH



Emergency services and disease treatment fully or partially paid for by government (e.g., through Medi-Cal, ACA subsidies, VA, etc.)

THRIVING (PROMOTION)

HOUSING & SHELTER



Government subsidization of predominantly White suburbs and homeownership, mortgage tax breaks, Homestead Act, municipal incorporation benefits, government endorsement of better credit scores/loan terms for certain homebuyers

EDUCATION & YOUTH



Through municipal incorporation, access to civic participation, and political districting, predominantly White communities concentrated and accumulated resources to fund high quality activities, programming, recreational spaces, educational resources, food, and shelter for families

HEALTH



Our country's labor laws & economic system provide "white collar" workers higher-quality health insurance, sick leave, safer working conditions, and wages that allow them to afford high-quality food & living conditions; Wealthy, affluent communities invest public dollars in parks/pools/physical activity spaces and limit negative environmental impacts

ACTIVE HARM & PUNISHMENT

HOUSING & SHELTER



Eminent domain and destruction of BIPOC neighborhoods for public projects primarily used by white commuters (e.g., freeways, LA Union Station), redlining, deportation, Japanese internment, Trail of Tears and land theft, “race massacres”

EDUCATION & YOUTH



Budget cuts to schools, libraries, and public programming, school-to-prison pipeline, selective criminalization and enforcement of BIPOC youth

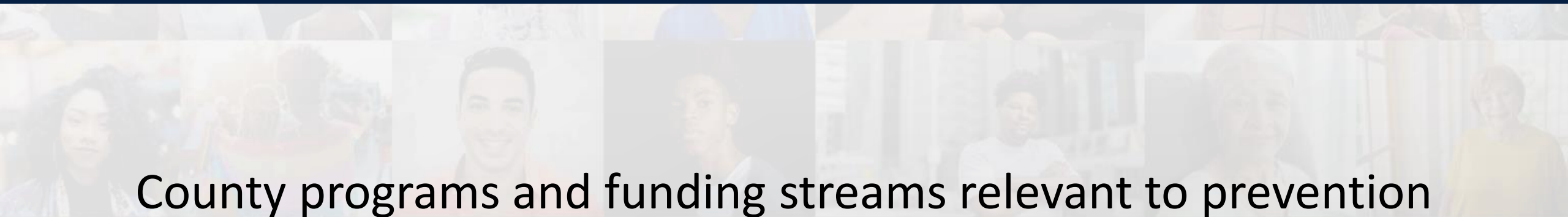
HEALTH



Government sponsored medical experimentation and sterilization of BIPOC people; limited access and exclusion from health insurance/care, limited labor protections and benefits for workers (e.g., contractors, undocumented immigrants); unsafe working conditions due to selective criminalization (e.g., sex work, marijuana sales, street vendors)



ITEM 8



County programs and funding streams relevant to prevention



ITEM 9

Review and take appropriate action on Proposed Charter

Major Deliverables

Countywide governance structure

Funding streams analysis

Shared prevention metrics

Structure

Task Force and subject area tables will be supported by ARDI staff, County Counsel, and other County staff and external partners



Membership

- **Task Force:** executive leaders from 19 departments & initiatives, external experts
- **Subject Area Tables:** task force members, County staff, field experts, people with lived experience
- Familiarity and leadership across County & local prevention initiatives
- Commitment to cross departmental collaboration, equity, and anti-racist policy
- Lived experience receiving services, especially individuals from communities experiencing disproportionality in County systems

Roles & Responsibilities

General Members (task force and tables)

- Attend task force & table meetings as designated
- Share data, research, strategies, practices, and insights to ensure success
- Liaise, collaborate, and report back to stakeholders
- Center voices and experiences of impacted communities

Subject Area Table Co-Chairs

- Lead their table in developing and achieving priorities and deliverables
- Facilitate collaboration and discussion
- Represent their table during full task force meetings

Operations

- Chair
- ARDI team support
- Brown Act / decision-making
- Working agreements



ITEM 9

Review and take appropriate action on Proposed Charter

ITEM 10

Nominate and elect co-chairs
for each of the three subject
area tables

- **Coordination & Integration**
- **Addressing Disproportionality**
- **Prevention Framework Alignment**

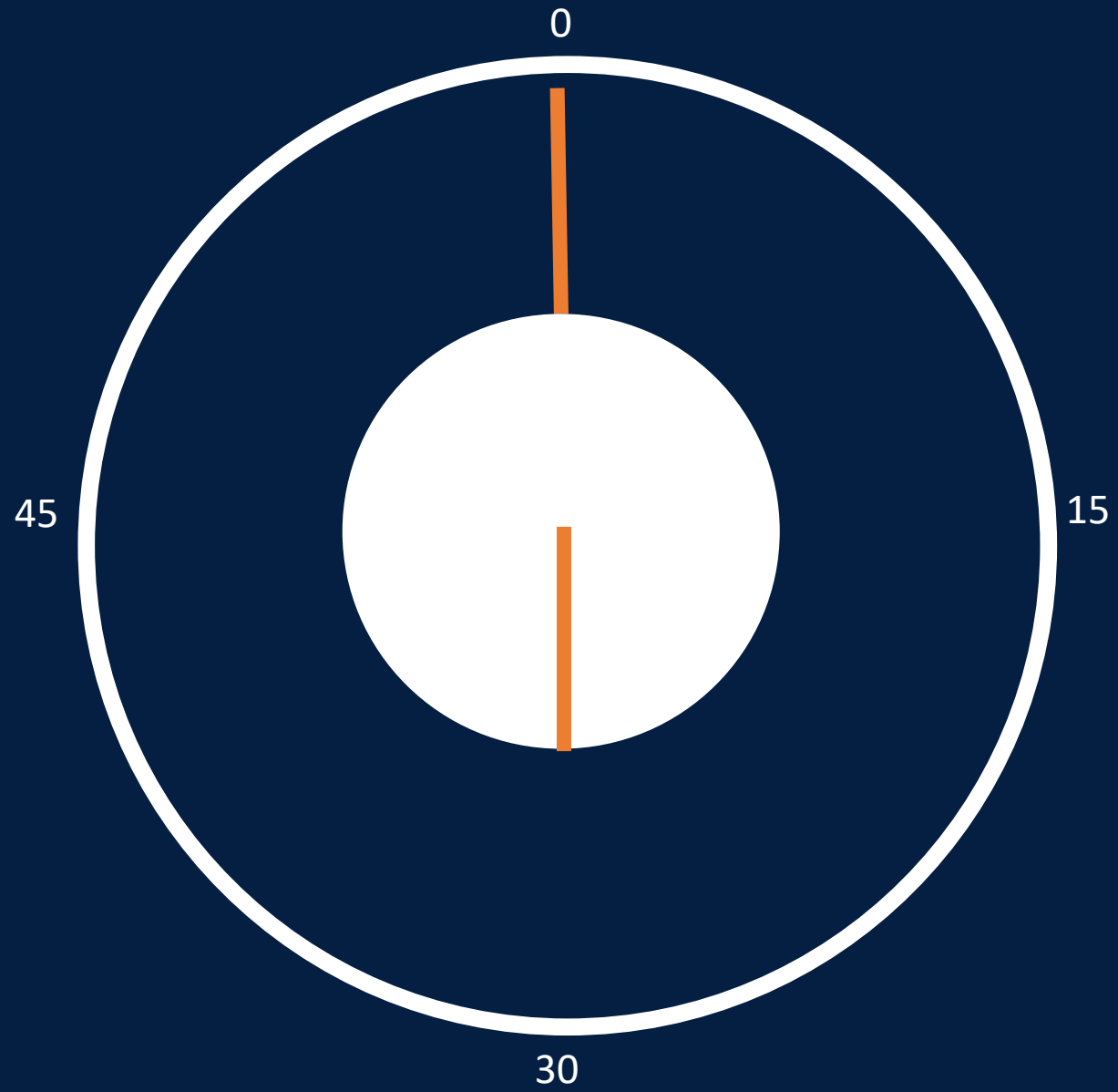
ITEM 11

Public Comment

To address the Task Force and provide public comment on **Task Force-related subject matters**, please use the *raise hand* feature. Use the same feature to lower your after your comments.

If you are calling in by phone, dial *9 on the phone's dial pad to raise your hand. Dial *9 again to lower your hand.

Each speaker is allowed up to one minute.





ITEM 12

ADJOURNMENT

