

Adding a Caregiver to the Care Team

Caregiving is helping someone with their daily needs when they're unable to do so for themselves, and it helps participants impacted by various conditions stay in their homes or in transitional shelter settings instead of moving to care facilities. California's IHSS program funds ongoing caregiving support, while HFH's IHCG program temporarily provides caregiving support as participants await IHSS approval.

Pathways to Caregiving Support

IHSS

In-Home Supportive Services
Administered by DPSS

IHCG

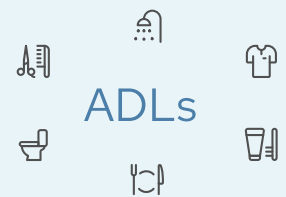
In-Home Caregiving
Administered by HFH

	IHSS	IHCG
Description	Caregiving program in CA which funds in-home ADLs and/or IADLs support for low-income elderly, blind, or disabled people.	Caregiving bridge program in LA County, providing in-home ADLs and/or IADLs support for participants living with co-occurring conditions who are at risk of homelessness or staying in a transitional shelter.
Eligibility Criteria	<ul style="list-style-type: none"> • 65+, blind, or disabled • California resident • Medi-Cal beneficiary • Live in own home or chosen dwelling (includes transitional shelters but excludes licensed facilities) • Income up to 138% FPL 	<ul style="list-style-type: none"> • Pending, approved, or denied IHSS application with date/case # • Full or Limited Universal Information Sharing Consent in CHAMP • Meets caregiving need criteria per HFH clinician assessment
Application Process	<ul style="list-style-type: none"> • Phone 888.944.4477 (preferred) or Print and mail to DPSS IHSS: <i>PO BOX 93730 City of Industry, CA 91715</i> • Receive submission notification with case number • Submit Health Care Certification (upon request) 	<ul style="list-style-type: none"> • Record CHAMP CS Personal Care and Homemaker Services Opt-In • Verify identifying, demographic, contact, and case manager info for the participant in CHAMP • Submit Application (must include IHSS case details)
Eligibility Determination	<ul style="list-style-type: none"> • DPSS clinician assesses ADLs/IADLs via in-home interview • Redetermination annually 	<ul style="list-style-type: none"> • HFH clinician assesses ADLs/IADLs via in-home interview • Redetermination every 90 days
Application Decision Notification	<ul style="list-style-type: none"> • Approval includes monthly hours allotment (no hours cap) • Denial includes explanation why 	<ul style="list-style-type: none"> • Approval includes assigned IHCG provider and monthly hours allotment (up to 160 hours) • Denial includes explanation why
Caregiver Selection & Management	<ul style="list-style-type: none"> • Recipient hires, trains, and manages their caregiver • Can be family, friends, neighbors, or from PASC 	<ul style="list-style-type: none"> • Caregiver assigned by HFH from subcontracted network • HFH monitors caregiver performance
Duration	<ul style="list-style-type: none"> • Ongoing • Annual redetermination 	<ul style="list-style-type: none"> • Temporary • 90-day redetermination • Ends after IHSS caregiver is hired
Support	<ul style="list-style-type: none"> • IHSS Helpline Community (M-F 8am-5pm) 	<ul style="list-style-type: none"> • HFH Caregiving Office Hours (for ICMS practitioners)



When to pursue caregiving:

A 5x5 score of 2+ for the ADLs domain and/or a HAI score of 2 or lower for the Life Skills question may be an indicator of unaddressed caregiving need. When assessing, consider:



ADLs

Activities of Daily Living (ADLs) are fundamental tasks essential for personal care and survival:

- Bathing
- Personal Hygiene
- Grooming
- Toileting & Continence
- Eating & Feeding
- Dressing
- Moving/Transferring



IADLs

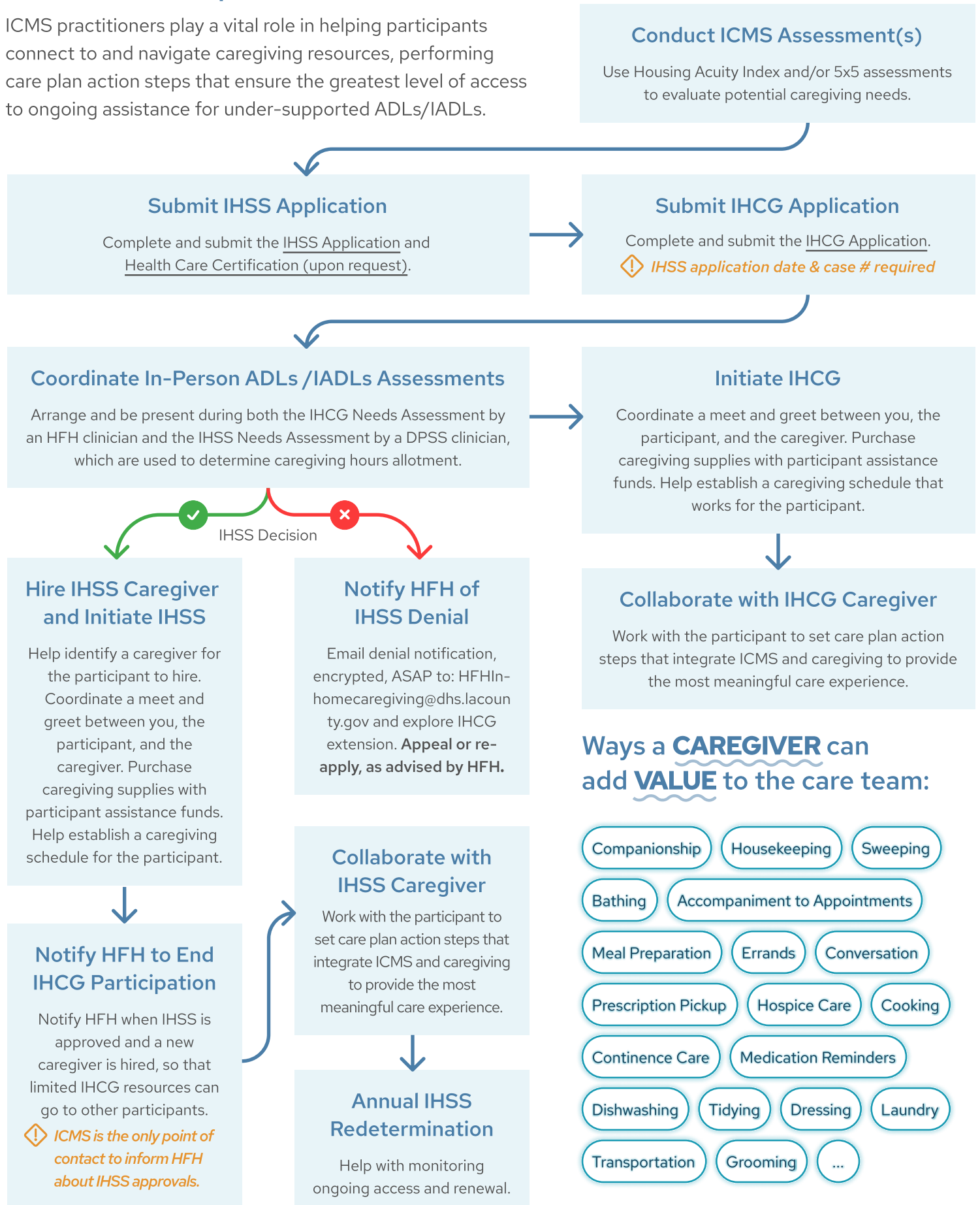
Instrumental Activities of Daily Living (IADLs) involve more complex, organizational tasks:

- Managing Money
- Household Management
- Health Management
- Meal Preparation
- Communication
- Transportation Access
- Shopping

[Learn more about how to connect ICMS participants to caregiving support.](#)

ICMS Action Steps

ICMS practitioners play a vital role in helping participants connect to and navigate caregiving resources, performing care plan action steps that ensure the greatest level of access to ongoing assistance for under-supported ADLs/IADLs.



Comments, Questions, or Feedback about this guide? [Let us know](#)