

WALNUT PARK

Community Parks & Recreation Plan

GREEN IN!

Opening and
Expanding the Green
Space Network in
Walnut Park

PURPOSE OF THE PLAN

The purpose of the Plan is to provide a vision and roadmap for a greener Walnut Park, including a more extensive network of publicly-accessible green spaces and recreational facilities, as well as environmental enhancement projects. More importantly, the Plan provides specific implementation actions to be taken by the County. These will require establishing and strengthening partnerships in order to help reach the vision of a greener, safer and healthier community. The Plan builds on previous planning efforts and is a response to community needs and calls for more greening in Walnut Park.

PARKS AND GREENING PROFILE

Walnut Park has a severe deficit of parkland. The community only has one joint-use park, approximately 4.5 acres in size, serving a population of nearly 16,000 residents. Additionally, the park is located on the school grounds of a local elementary school and has limited hours for community use. The Los Angeles County General Plan sets a standard of 4 acres of local parks per 1,000 residents. Based on current population levels, Walnut Park only has approximately **0.3 acres of local parks per 1,000 residents**, a figure significantly below the General Plan standard.

Due to the limited access of the joint-use park, many residents feel they do not have a park in their community and travel to parks outside of Walnut Park or simply do not visit parks at all. **Nearly one third of Walnut Park residents are not within walking distance (1/2 mile) of a park**, suggesting that their likelihood of using park spaces is significantly lower than residents within walking distance of parks. Other local **environmental issues** create a **high community need** for increased parks and green spaces. These issues include high levels of emissions and noise from nearby industrial uses, low urban tree canopy coverage, and a challenging pedestrian and bicycle environment.

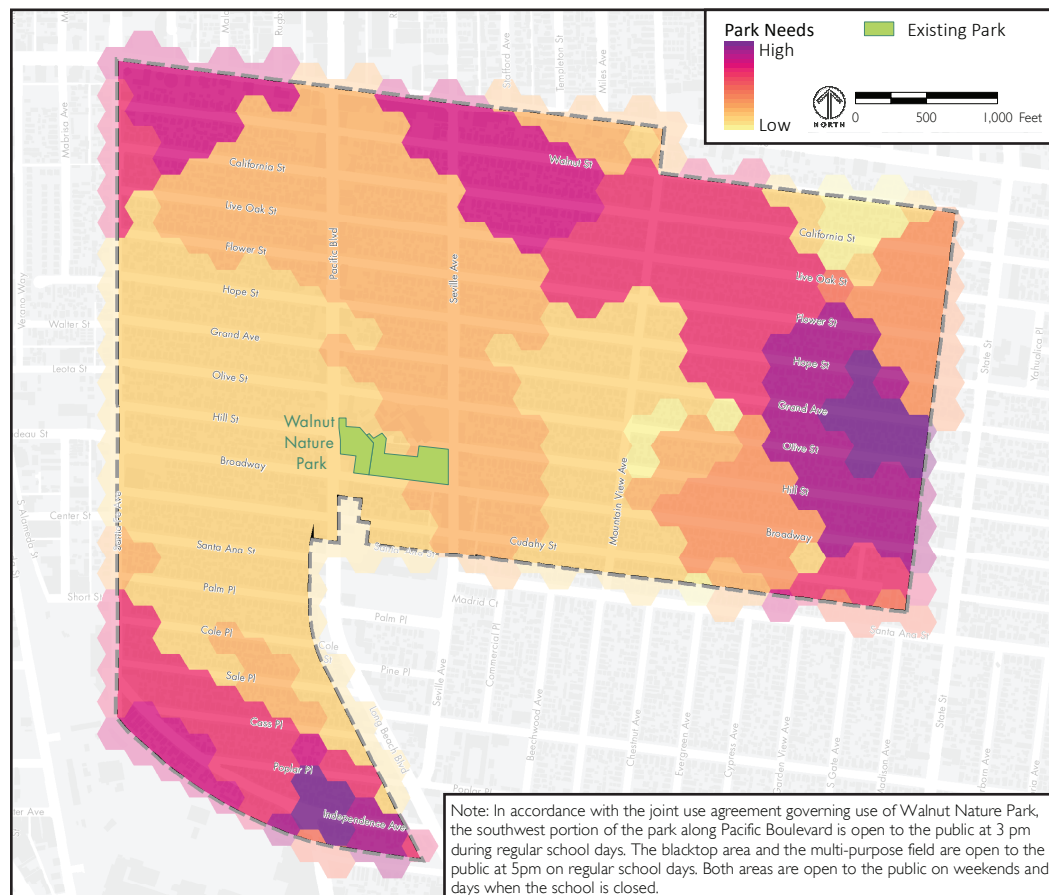
ENVIRONMENTAL BENEFITS OF EXISTING PARK

120,000
gallons of
stormwater
intercepted
annually

160
pounds of
reduced air
pollutants
annually

15,000
tons of CO₂
sequestered
annually

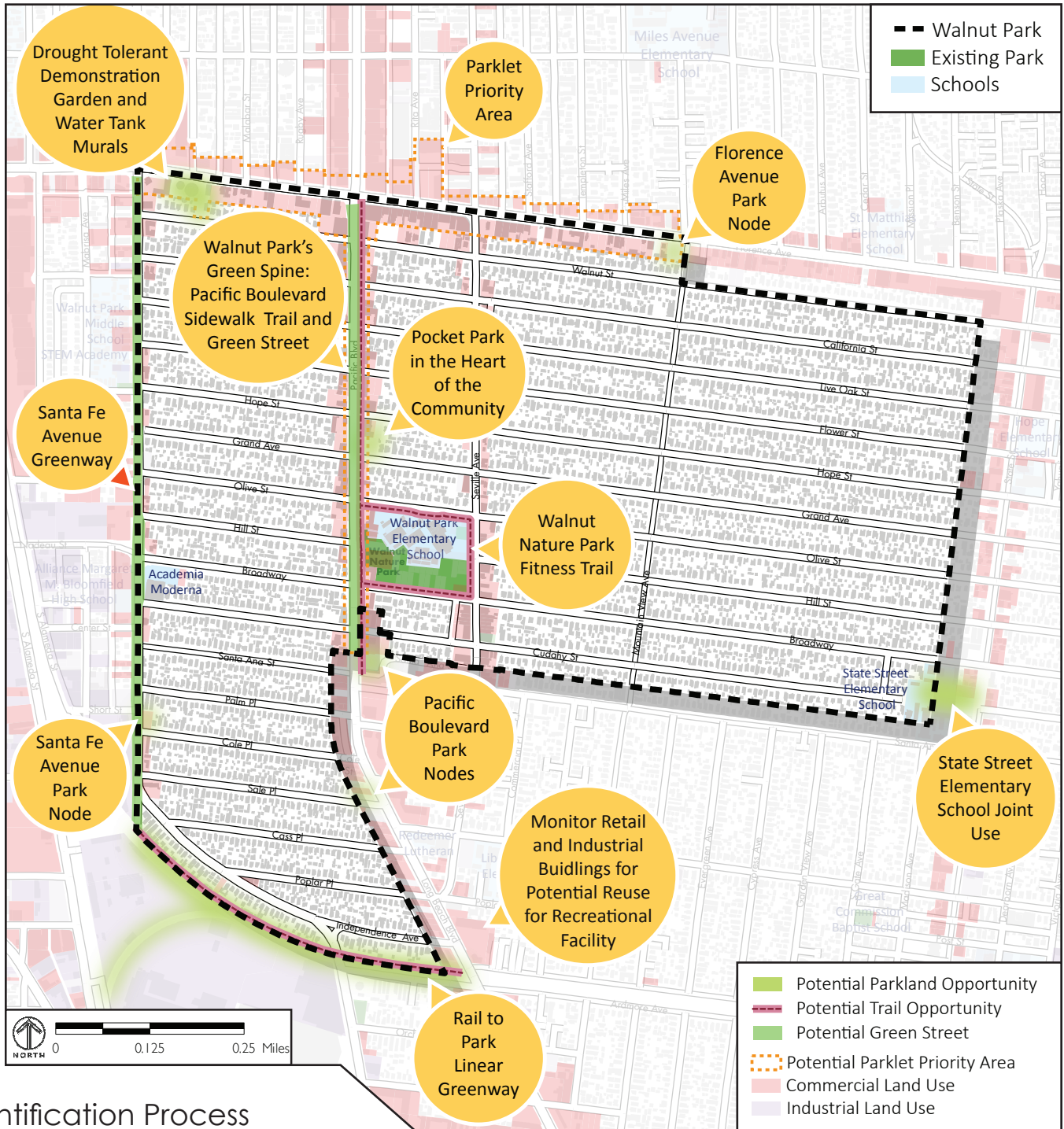
Where are parks most needed in Walnut Park?



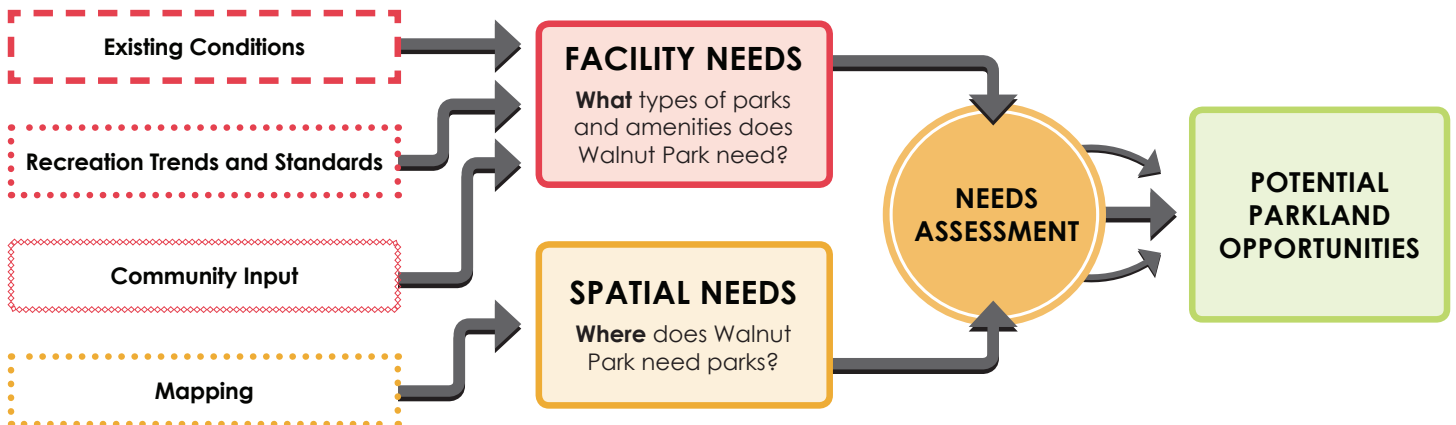
Community Workshop
November 2013.

WALNUT PARK GREEN VISION MAP

This map identifies potential park, trail, and greening projects that may be implemented in the short, medium, and/or long term to meet the needs of Walnut Park.



Site Identification Process



GOALS FOR WALNUT PARK

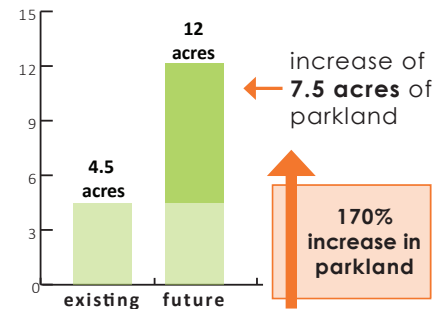
1. Increase overall green space and develop new recreational facilities.
2. Ensure that facilities and programs meet community needs and that the community is included in decision-making processes.
3. Provide new places for exercise and safe places to walk.
4. Create public spaces that support community interaction and cultural identity through public art, community events, and commercial enterprise.
5. Improve access to parks, green space, and community amenities while creating safe corridors for pedestrians and cyclists.
6. Maintain and enhance Walnut Park's urban forest.
7. Focus on multi-benefit urban greening projects that optimize environmental services.

CONCEPTUAL POCKET PARK

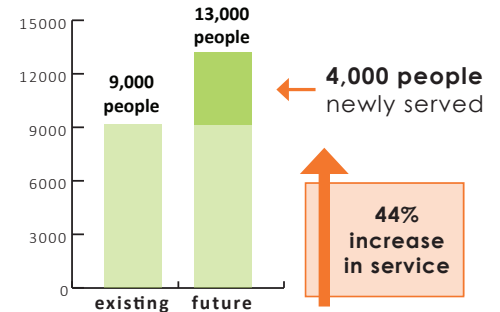


Service improvements (with the addition of potential new parks)

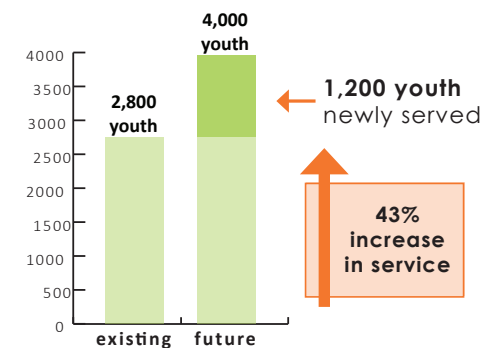
Parkland Acres



Total Population Served



Youth Population (Under 18) Served



Graphs show improvements based on the addition of high priority park projects.



CONCEPTUAL LINEAR PARK



PLACEWORKS



For more information, contact:

Clement Lau, AICP, Departmental Facilities Planner
 County of Los Angeles
 Department of Parks and Recreation
 Tel: (213) 351-5120
 E-mail: clau@parks.lacounty.gov