

EAST LOS ANGELES

Community Parks & Recreation Plan

**A PARK
EVERY
DAY**

MISSION

“A Park Every Day” emphasizes the importance of **providing local park access** within the community. Green spaces, **of a variety of sizes**, should be available throughout the community and easily accessible in the everyday routine of residents’ lives. Given the lack of available land for new parks, the vision for East Los Angeles (commonly referred to as East LA), is a **creative approach** of amplifying the existing network with new spaces for **exercise and recreation**, including new parks, parklets, fitness nodes, and expanded walking paths.

ENVIRONMENTAL BENEFITS OF EXISTING PARKS

1.7 million
gallons of
stormwater
intercepted
annually

1,600
pounds of
reduced air
pollutants
annually

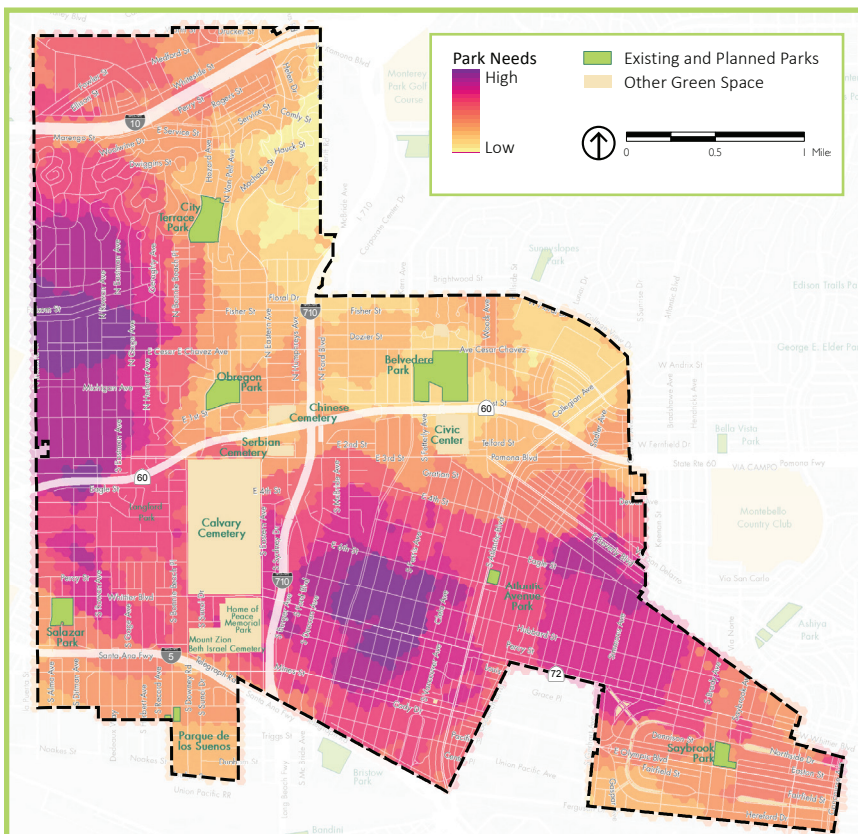
153,000
tons of CO₂
sequestered
annually

PARKS AND GREENING PROFILE

East Los Angeles has seven parks, totaling 75.5 acres of parkland. However, 31 acres of those are at Belvedere Park, which is designed to accommodate use by County residents up to 20 miles away. The other six parks in East Los Angeles are local parks intended for use predominately by community residents. The Los Angeles County General Plan establishes a standard of 4 acres of local parks per 1,000 residents. East Los Angeles has a current population of 126,496 residents and approximately 44 acres of local parkland, translating to **0.34 acres of local parks per 1,000 residents**, a figure well below the General Plan standard.

Access to existing parkland in East Los Angeles is not consistent across the community. **About 44 percent of the East Los Angeles residents is not within walking distance (1/2 mile) of a park.** Additionally, due to socioeconomic conditions, including relatively low incomes, low levels of car ownership, and a large percentage of families with children, a master plan for parks and urban greening is needed to help East Los Angeles meet its needs for parks, green space, and community health.

Where are parks most needed in East Los Angeles?



Youth Bike Ride to Identify Potential Park Sites.



Community Members at the Design Workshop.

EAST LOS ANGELES GREEN VISION MAP

This map identifies potential park, trail, and greening projects that may be implemented in the short, medium, and/or long term to meet the needs of East Los Angeles.



GOALS FOR EAST LOS ANGELES PARKS

1. Increase overall green space.
2. Integrate parks and healthy activities into the everyday lives of East LA residents.
3. Create new urban trails, walking paths and safe streets that connect residents to parks and open space.
4. Enhance public spaces that support community interaction and cultural identity.
5. Consider creative new green space types:
 - » Utility corridor parks
 - » Freeway underpass parks
 - » Freeway cap parks
 - » Parklets
6. Increase the sense of nature within the parkland system and in the everyday lives of East Los Angeles residents.
7. Maintain and enhance East Los Angeles' urban forest.
8. Focus on multi-benefit urban greening projects that optimize environmental services.

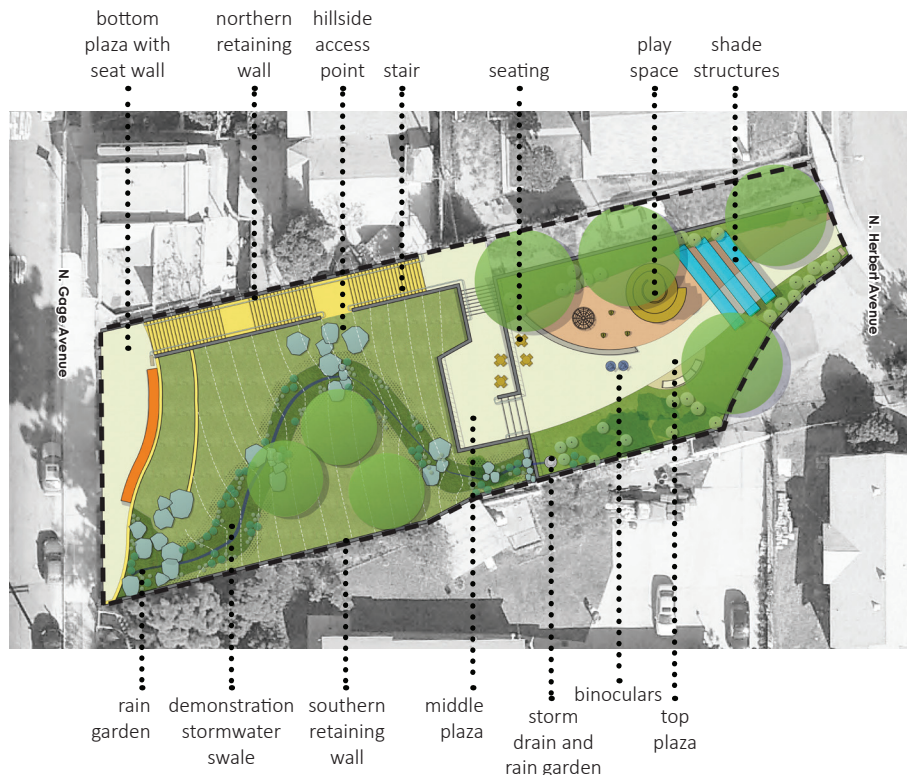
PLANS FOR THE FUTURE

East Los Angeles community members participated in a design workshop to develop concepts for three potential new parks in their community, including a mini park at Folsom Street, a segment of the Southern California Edison Utility Corridor, and a fitness trail near City Terrace Park. These concepts were developed into schematic plans that serve as guiding templates for new parks.

Folsom Street Mini-Park Concept

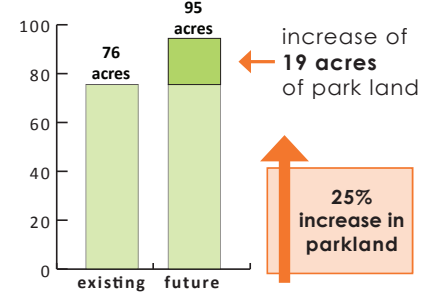


Community Members at the Design Workshop.

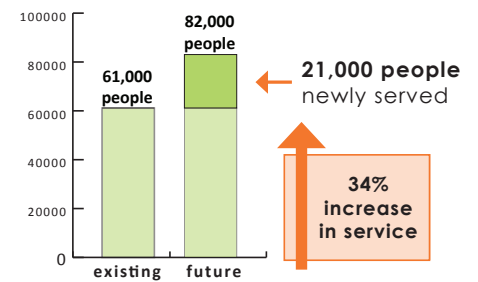


Service improvements

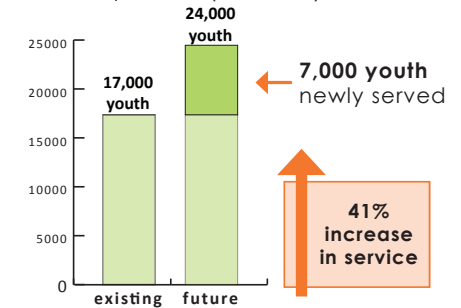
(with the addition of potential new parks)
Parkland Acres



Total Population Served



Youth Population (Under 18) Served



Graphs show improvements based on the addition of high priority park projects.

CONCEPTUAL PARKS AND GREEN SPACE

Bike Skills Park



Multipurpose Field with Walking Path



Folsom Street Mini-Park



PLACEWORKS

LOS ANGELES
NEIGHBORHOOD
LAND
TRUST

For more information, contact:

Clement Lau, AICP, Departmental Facilities Planner
County of Los Angeles Department of Parks and Recreation
Tel: (213) 351-5120; E-mail: clau@parks.lacounty.gov