

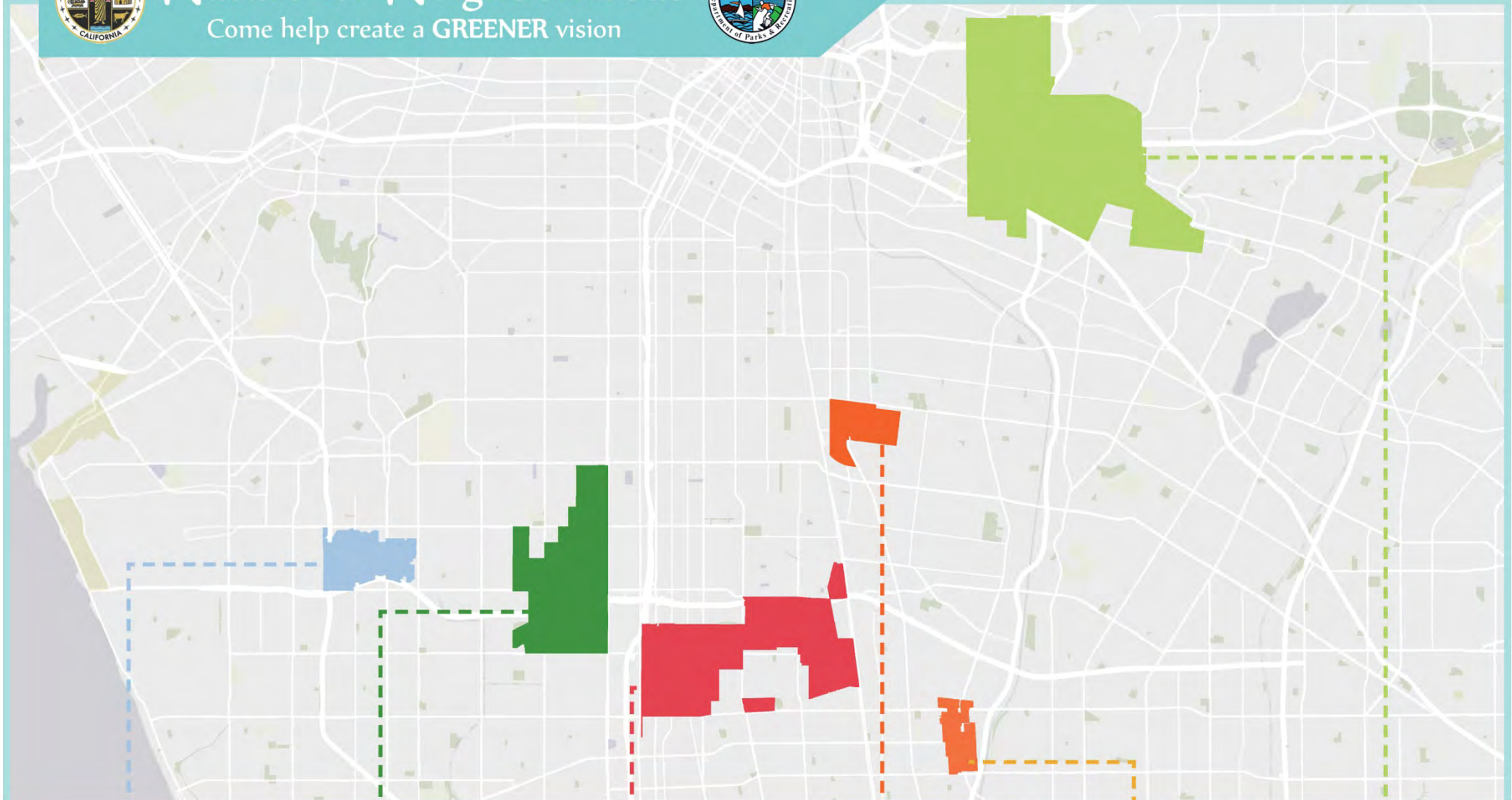


# Nature for Neighborhoods

Come help create a GREENER vision



PLACEWORKS



## COMMUNITY PARKS AND RECREATION PLANS

LENNOX

WESTMONT-  
WEST ATHENS

WILLOWBROOK

WALNUT  
PARK

EAST RANCHO  
DOMINGUEZ

EAST LOS  
ANGELES

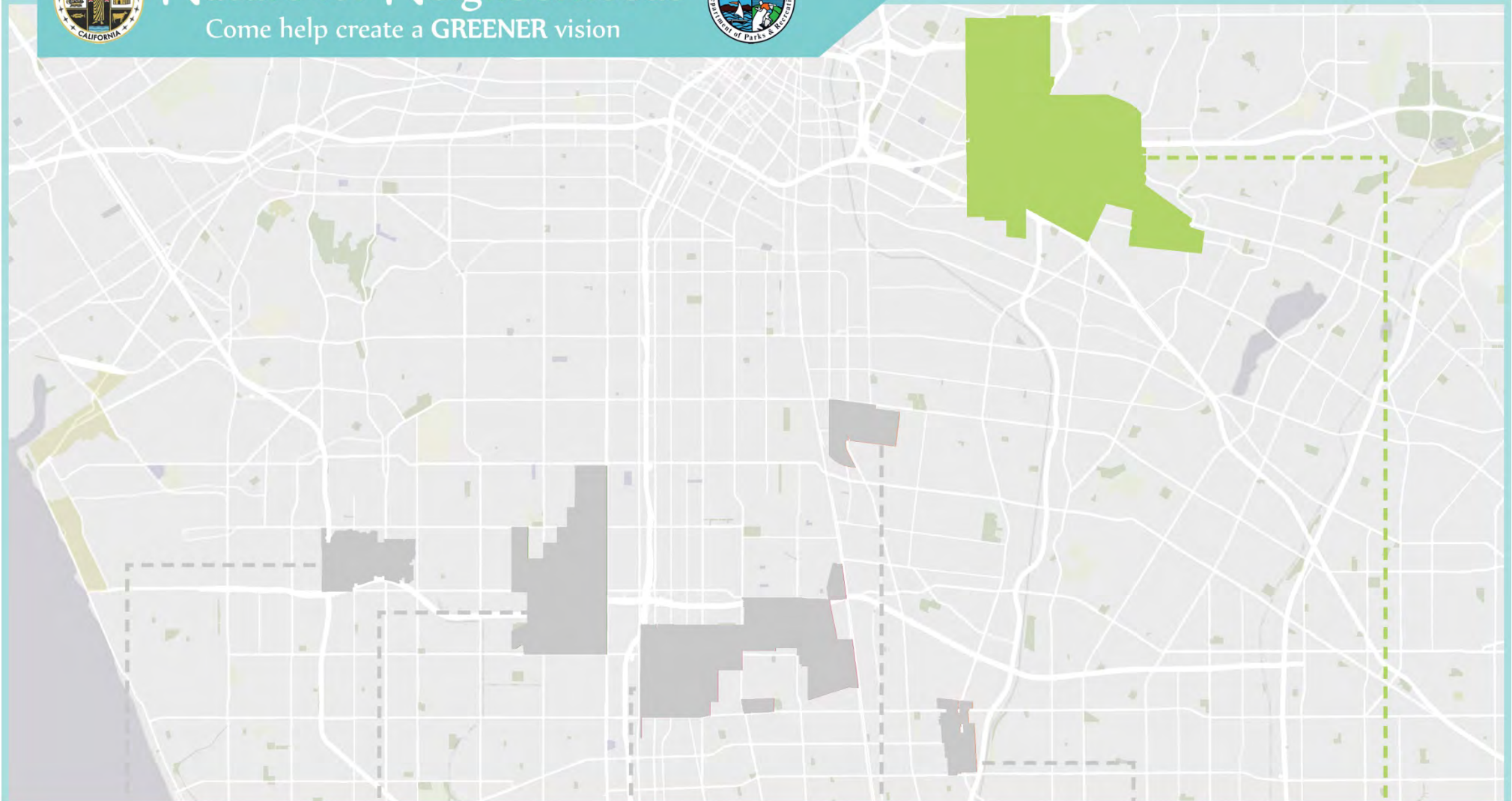


# Nature for Neighborhoods

Come help create a GREENER vision



PLACEWORKS



## EAST LOS ANGELES COMMUNITY DESIGN WORKSHOP

LENNOX

WESTMONT-  
WEST ATHENS

WILLOWBROOK

WALNUT  
PARK

EAST RANCHO  
DOMINGUEZ

EAST LOS  
ANGELES



# TONIGHT'S MEETING

1. About East LA
  - Existing Conditions
  - Park Needs
  - What we've heard from the Community
2. Health and Safety
3. Vision and Strategies
4. Three Opportunity Sites
  - Site Conditions
  - Opportunities and Limitations
5. Park Features
6. Site Design Activity



# ABOUT EAST LA

East Los Angeles Population: 126,496

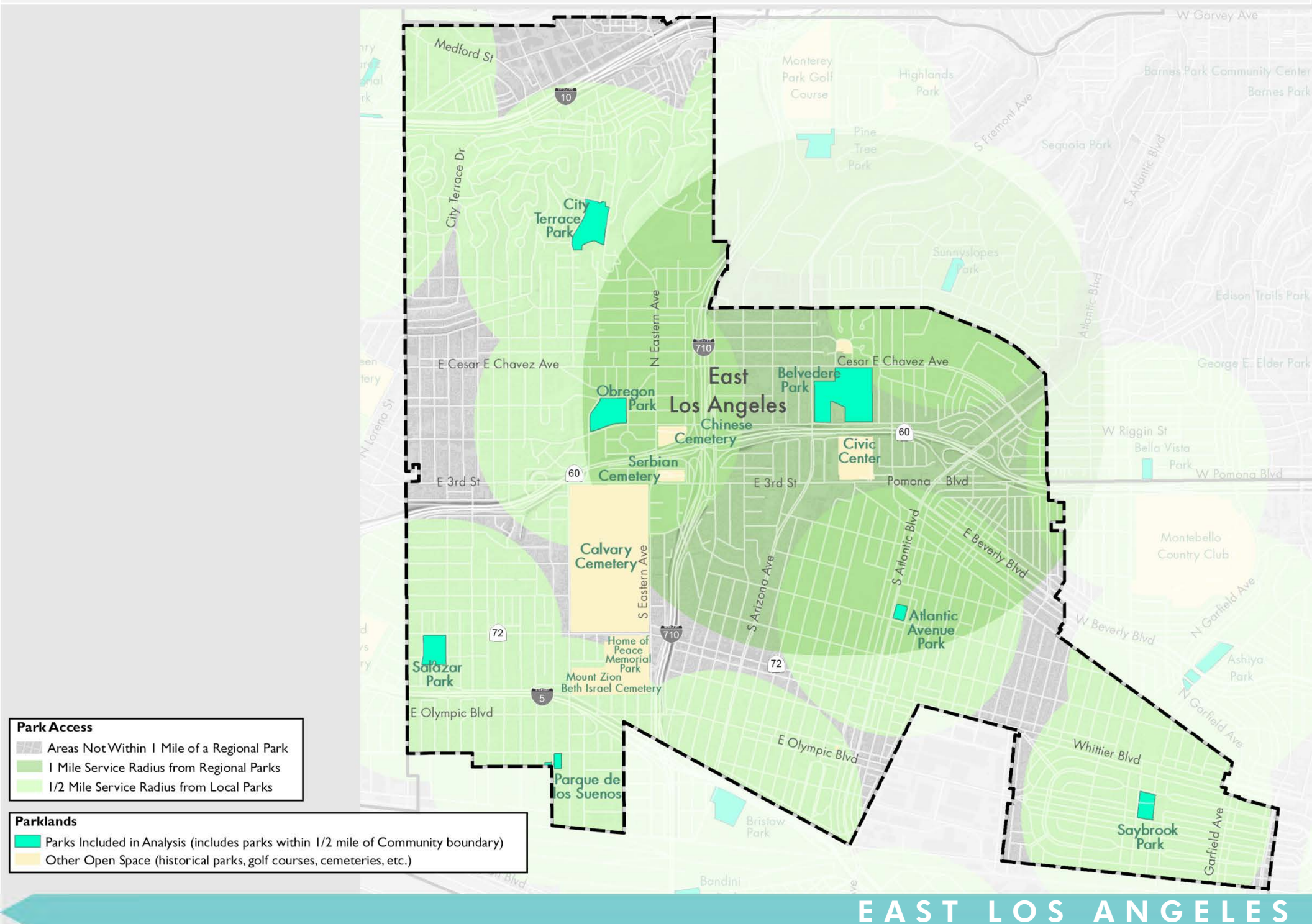
Los Angeles County Standard: 4 acres / 1,000 people

- Total amount of open space needed in East Los Angeles: 506 acres

Existing Park Acres: **75.54 acres**

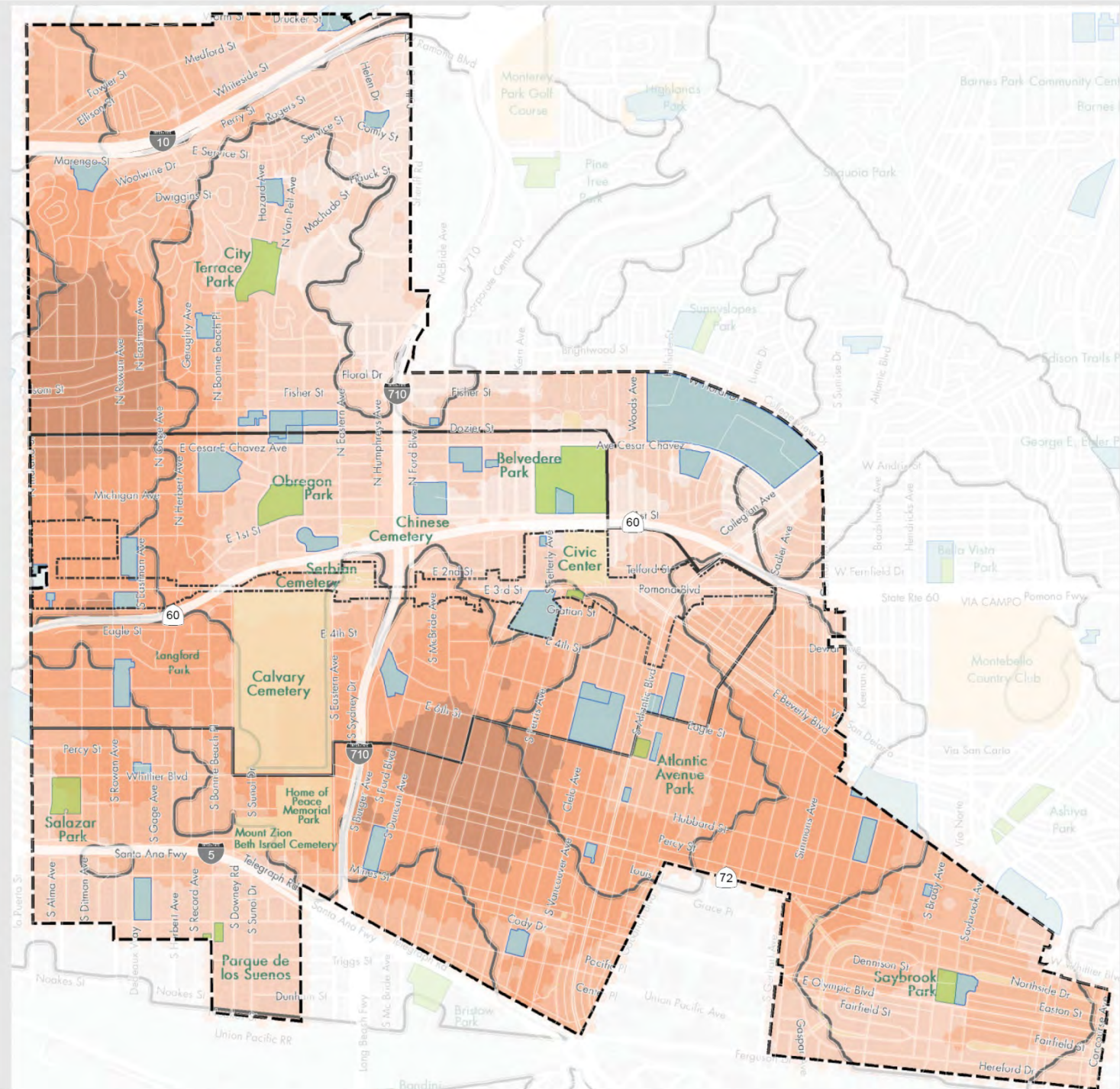
- 0.6 acres / 1,000 people

# WHERE ARE THE PARKS and WHO DO THEY SERVE?





# WHERE IS THE NEED?



EAST LOS ANGELES



# WHAT IS IN OUR PARKS

	SIZE (ACRES)	PARK AMENITIES								PLAY- GROUND		RECREATION AMENITIES										BUILDINGS/STRUCTURES										Security Lighting	Parking Spaces					
		Restrooms	Group Picnic Shelters	Picnic Tables	Barbecues	Splash Pads	Fitness Zone	Outdoor Stage	Drinking Fountains	Art or Monument	2-5 year old	5- 12 year old	2-12 year old	Soft Ball Fields	Multi-purpose Overlay Field	Soccer Fields	Football Field	Basketball Courts	Tennis Courts	Handball Courts	Lake	Skate Park	Walking Path	Swimming Pool/Bath House	Community building	Senior Center	Offices	Gymnasium	Multi-purpose Room	Computer Lab	Library	Concession Stand	Commercial Kitchen	Sheriff's Office				
	1.96	1	2			1					1													1														
	15.31		1			1		1			1		1	2		1		1	1	1				1	1		1	1	1	1							100	
	10.94		1				1				1		1	2		2		1		3				1	1		1	1	3	1							55	
	1.61		1								1	1	1					1																				
	7.92		1				1						1	2	1			1	2			1		1	1	1	1	1	6	1			1			200		
	7.06		1								1		1	1				2	1						1		1		1	1							25	
	30.74		4				1						1	3	1	2	1	2	2			1		1	1		3	1	2	1	1	1		1			114	
	75.54	1	11			2	3	1			5	1	6	10	2	5	1	8	6	4	1	2		5	5	1	7	4	13	5	1	1	1	1				

# COMMUNITY OUTREACH: WHAT WE DID

- 6 Stakeholder Meetings with 8 Organizations
- 3 Focus Groups
- 200 Community Surveys
- 1 Community Workshop
- 1 Community Bus Tour



# WHAT WE HEARD

## KEY ISSUES

- Overcrowded parks
- Lack of green landscaping and programming
- Security issues (lighting and supervision) and maintenance
- Need for improved communication between park staff and the community
- Senior and Youth Programs
- Cost of programming is too high, especially for families with several children.

WHAT WE HEARD FROM YOU

EAST LOS ANGELES

# COMMUNITY SUGGESTIONS

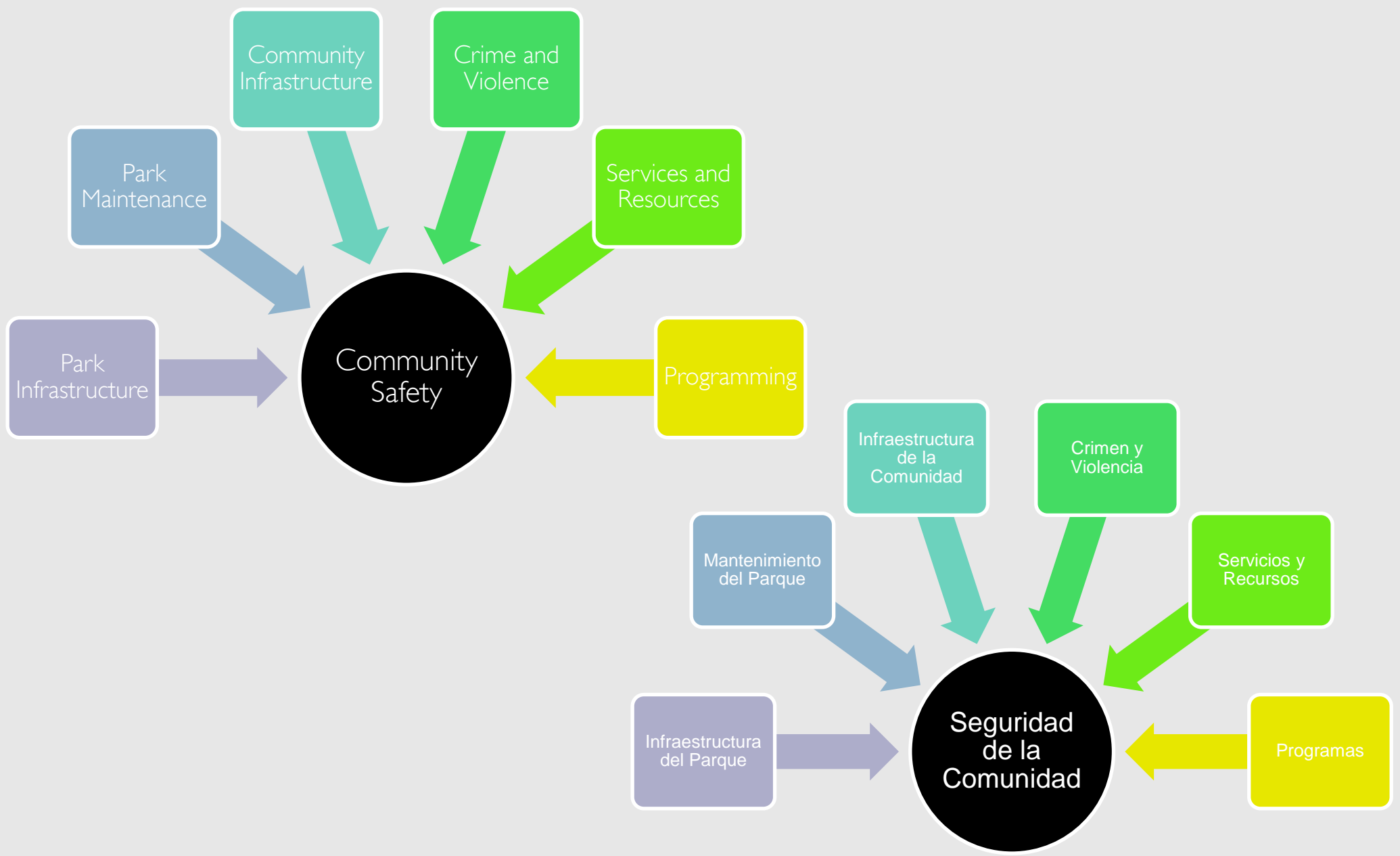
- A new running/walking track around Calvary Cemetery, which many already use for exercise
- More exercise programs and equipment (examples: bike lanes, fitness equipment, and Zumba classes)
- Green projects that are also communal places: plazas, placitas, and parklets
- More volunteer opportunities and community investment in local parks
- More open and frequent communication with park management

WHAT WE HEARD FROM YOU

EAST LOS ANGELES



HEALTH & SAFETY - COMMUNITY INPUT  
SALUD Y SEGURIDAD - OPINIONES DE LA COMUNIDAD



# HEALTH & SAFETY - COMMUNITY INPUT CONTINUED

Services & Resources	Programming	Infrastructure & Maintenance	External Influences & Law Enforcement
More park staff is needed to ensure adequate supervision and support for park users	There is widespread agreement among residents that park programming improves park safety	Lighting is a crucial element of park safety <ul style="list-style-type: none"><li>•The East LA Civic Center was praised as being a well lit communal area</li><li>•Obregon and Belvedere were identified as poorly lit parks</li></ul>	Sheriffs should patrol parks and the surrounding community more regularly
There is no system for filing grievances or reporting problems at the park	There is a need for more senior and youth programming, as well as exercise-related programming for all	Infrastructure improvements are needed, such as: <ul style="list-style-type: none"><li>•More crosswalks to protect pedestrians</li><li>• Uneven sidewalks should be replaced</li></ul>	Sheriffs should: <ul style="list-style-type: none"><li>•respond quicker when an incident or crime is reported</li><li>•speak Spanish in order to communicate with the constituents they serve.</li></ul>
Residents would like increased communication between the park and the community	Summer Night Lights, a program to bring residents to the parks after dark, was praised for improving park safety - residents want to see this program continued and expanded	Residents associate park maintenance with safety, stressing that a clean park is a safe park	The presence of gangs causes safety concerns to park users in East Los Angeles
There is a need for more consistency in park management so that the quality of services and resources provided at each park are standardized	Community gardens and accompanying programming are popular project ideas among residents because they would be beneficial to the community and residents' health	Stray and loose dogs pose threats to park users	Crime increases in the summer and more prevention strategies and vigilance are needed during that time of year



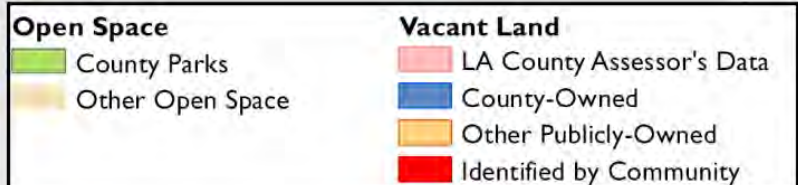
# COMMUNITY STEERING COMMITTEE (CSC) COMITÉ DIRECTIVO COMUNITARIO (CDC)

## Recommendations

- Create more joint use agreements
- Offer more low-cost programming
- Volunteer opportunities for undocumented residents
- Educational campaigns to hold park visitors responsible for their actions
- Identify more opportunities for collaboration to increase benefits of volunteers
- Stronger safety measures
- Address the homeless population who live at the parks
- Improve infrastructure
- Reduce bureaucracy
- Conduct more research
- Keep a CSC structure in place as a permanent mechanism for community input

# COMMUNITY IDENTIFIED SITES

WHAT WE  
HEARD FROM  
YOU



EAST LOS ANGELES



# THEMES

- Not enough green space
- Community desires places to walk, run and exercise
- Green spaces that are also gathering places
- A history of fragmentation
- Strong interest in community participation and ownership

WHAT WE HEARD FROM YOU

EAST LOS ANGELES

# SUMMARY OF NEEDS

## MORE GREEN SPACE



## SPACES TO PLAY



## SPACES TO GATHER



## SAFE SPACES



## SPACES FOR HEALTHY ACTIVITIES



## OPPORTUNITIES TO WALK



## SPACES FOR EXERCISE AND FITNESS



## IMPROVED ENVIRONMENTAL HEALTH

# OPEN SPACE VISION

a park  
EVERY DAY/  
Un parque  
Cada día

A Vision for  
Green Space  
and  
Connections in  
East LA

Una Visión para  
Espacios Verdes  
Y Connexiones  
En East LA





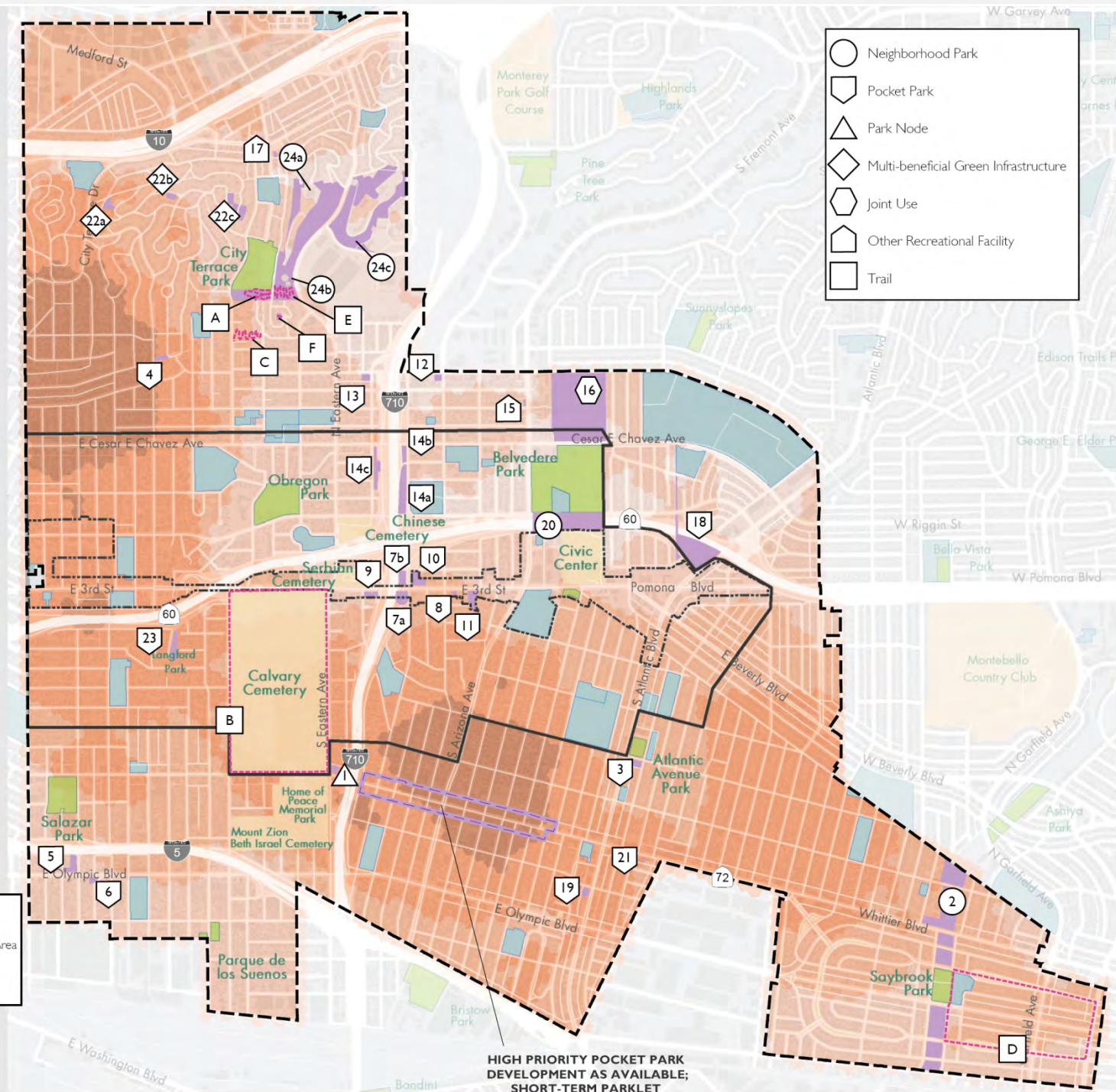
a park  
EVERY DAY

A Vision for  
Green Space  
and  
Connections in  
East LA

## STRATEGIES

- Strategically acquire **vacant lots** for greening throughout the community.
- Develop **park nodes** to support the community desire for **exercise and fitness**.
- Emphasize greening along the **Third Street corridor**.
- Create **trails** as to connect parks.
- **Partner** with other agencies to increase overall green-space capacity.
- Think creatively about **currently underutilized spaces** and develop for open space use.

# PARKLAND OPPORTUNITIES



**HIGH PRIORITY POCKET PARK  
DEVELOPMENT AS AVAILABLE;  
SHORT-TERM PARKLET**

## EAST LOS ANGELES

# SELECTING THE FIRST PROJECTS

NEED



SIZE



TIMING



OWNERSHIP



PRIORITY  
PROJECTS



# FIRST PRIORITIES

**Park Need**

- 20 - 23 - Very High
- 16 - 19 - High
- 12 - 15 - Moderate
- 9 - 11 - Low
- 5 - 8 - Very Low

**Parkland Opportunities**

- Potential Walking Trail
- Third Street Specific Plan Area - Major Change Area
- Third Street Specific Plan Area

**Existing and Planned Parks**

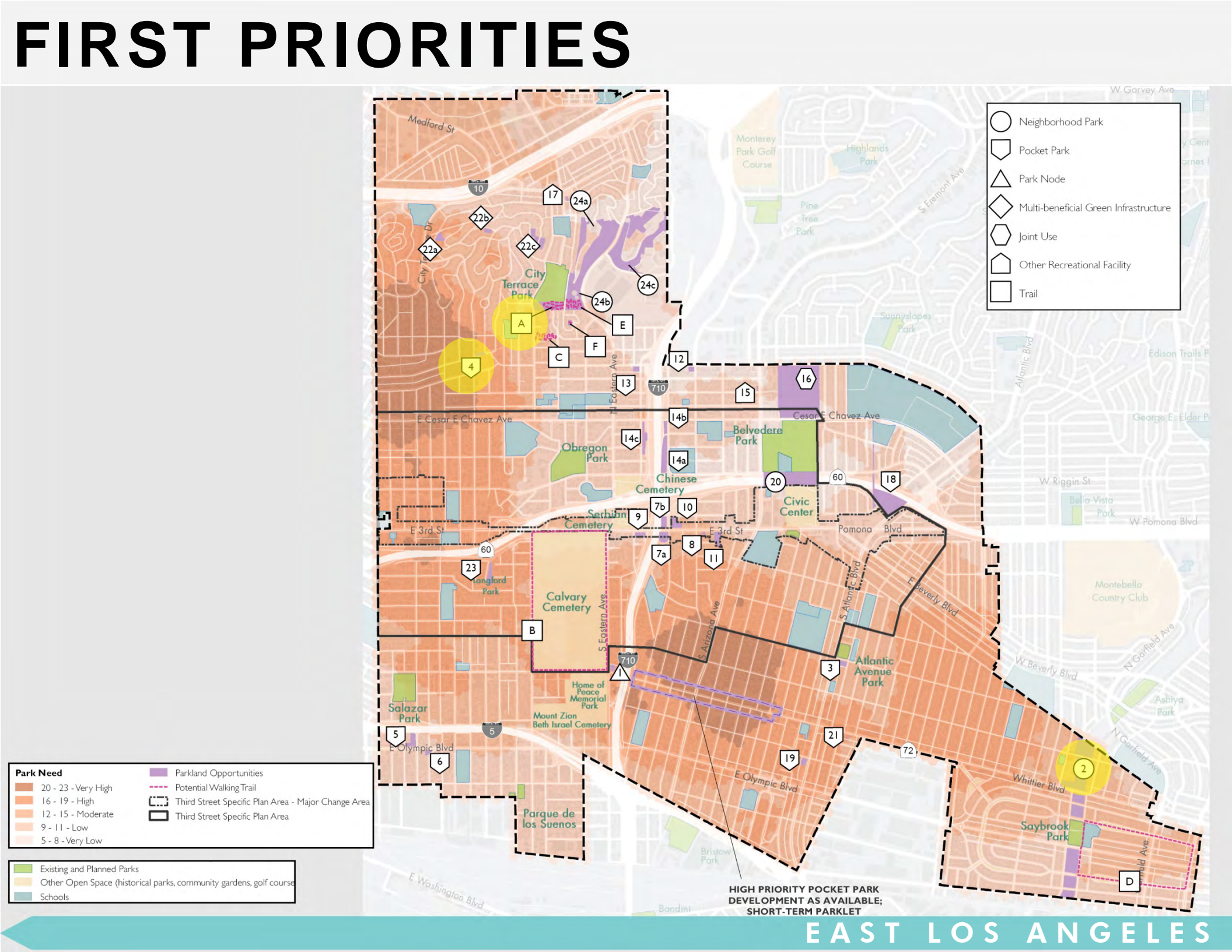
- Existing and Planned Parks
- Other Open Space (historical parks, community gardens, golf course)
- Schools

**Legend**

- Neighborhood Park
- Pocket Park
- Park Node
- Multi-beneficial Green Infrastructure
- Joint Use
- Other Recreational Facility
- Trail

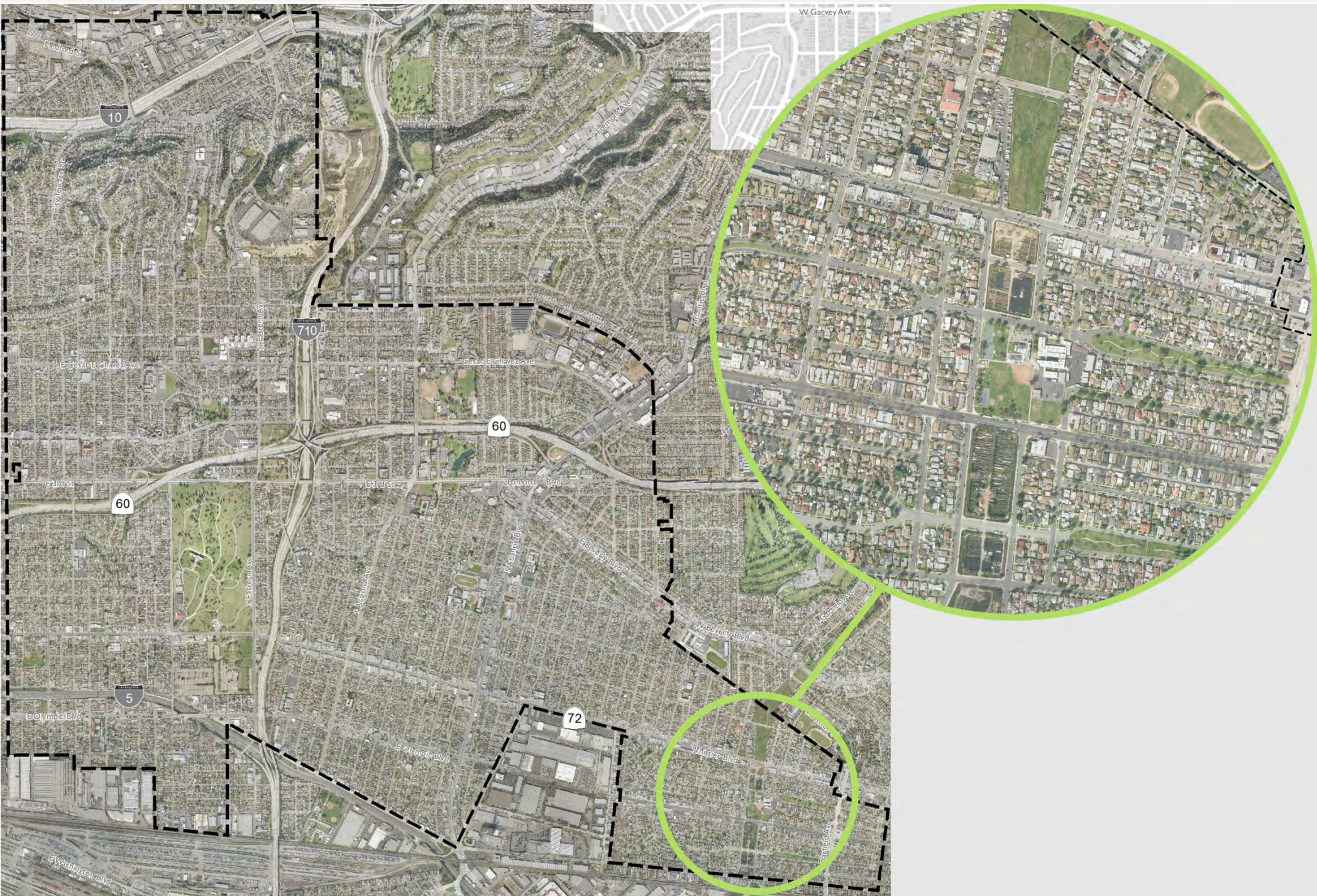
**HIGH PRIORITY POCKET PARK DEVELOPMENT AS AVAILABLE; SHORT-TERM PARKLET**

**EAST LOS ANGELES**





# SITE 2



EAST LOS ANGELES



# SITE 2



## SITE CONDITIONS

Total Size: 9.58 acres

EAST LOS ANGELES



# SITE 2



## CONTEXT AND CONNECTIONS

EAST LOS ANGELES



# SITE 2



SITE 2

EAST LOS ANGELES

# SITE 2



**A large green corridor through the eastern part of the neighborhood and improve connections to Saybrook Park.**



**Pockets of play zones could be suggested**



**Gathering nodes would provide resting places**



**Lighting and safety amenities**



**Potential long walking or running trail. Crosswalks and pedestrian amenities may be included**



**Fitness nodes along the route would provide options for exercise**



**Trees could shield the utility corridor; increased planting could provide habitat**

## KEY OPPORTUNITIES



# SITE 4



EAST LOS ANGELES



# SITE 4



## SITE CONDITIONS

Total Size: 0.44 acres

EAST LOS ANGELES



# SITE 4



## CONTEXT AND CONNECTIONS

EAST LOS ANGELES



# SITE 4



## SITE ANALYSIS

# SITE 4



## SITE ANALYSIS

# SITE 4



**Small, but a new pocket park increases overall green space in an area. It is owned by the County so easy to convert soon.**



**Stairs or fitness equipment could create a small fitness node.**



**Benches and tables placed at the top of the hill would have a nice view over the neighborhood**



**There is room for a small playground that could allow for children to play while adults exercise.**



**Lighting would make the site more accessible. Increased lighting and safety measures should be utilized.**

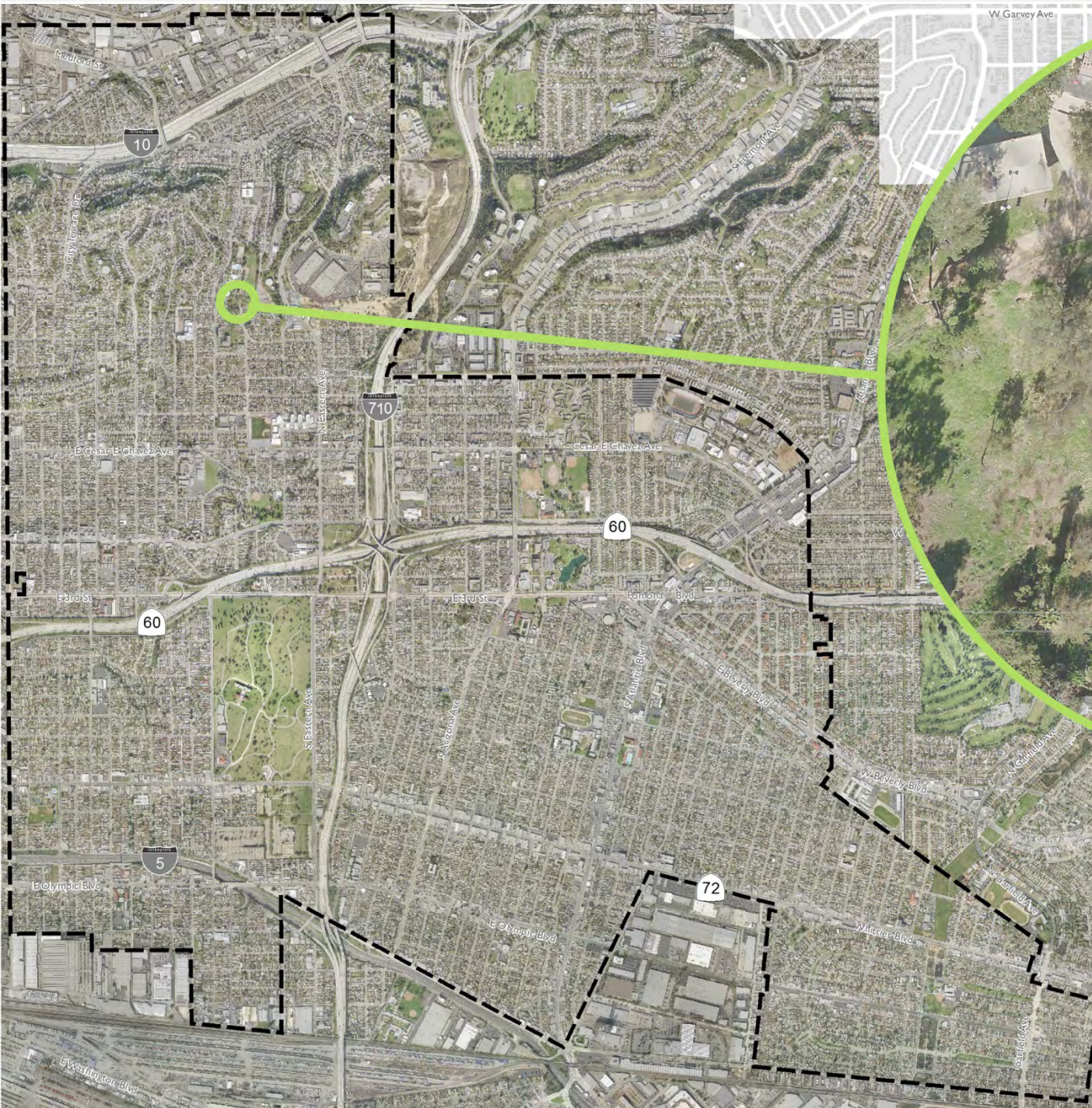


**There could be a small set of community garden plots at the top of the hill.**

## KEY OPPORTUNITIES



# TRAIL A



EAST LOS ANGELES



# TRAIL A

## SITE CONDITIONS

Total Potential Length: 0.33 miles (1,740 feet)  
Elevation Change: approximately 87 feet

EAST LOS ANGELES



# TRAIL A



## CONTEXT AND CONNECTIONS

EAST LOS ANGELES



# TRAIL A



## SITE ANALYSIS



# TRAIL A



**The trail would create new access to City Terrace Park from the neighborhood to the south. It is owned by the County so easy to convert soon.**



**The trail would provide a strenuous walking or running route up to the park.**



**Resting places along the trail would make it easier to climb.**



**The trail will pass through dense vegetation and should be well lit for safety.**



**Existing, established trees should be avoided and retained along the new trail route.**

## KEY OPPORTUNITIES

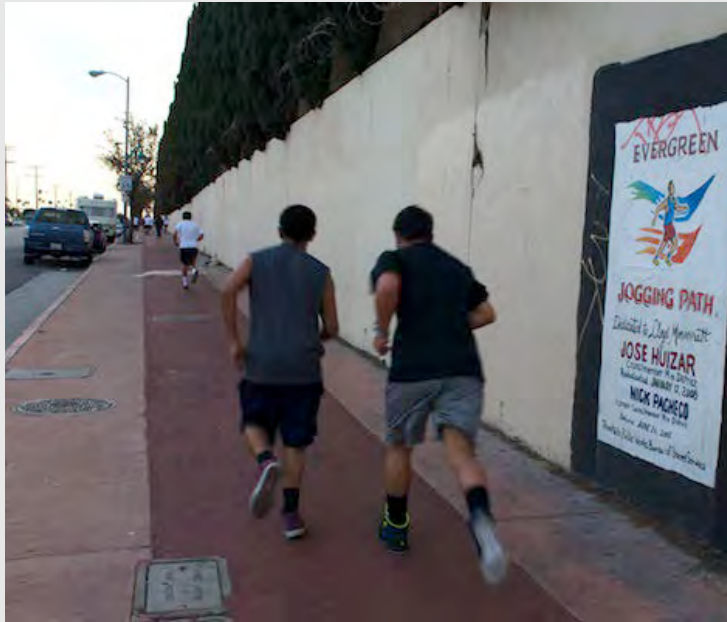
# SITE DESIGN

## TOOLBOX OF PARK FEATURES





# WALKING/RUN TRAIL



Rubberized Surface



Asphalt or Concrete Path



DG path



Stairs

## Considerations:

- Surface material (one type, multiple types)
- Modes (pedestrian, bike, skate board, horse)
- Stopping points/resting places



# EXERCISE



Fitness Equipment

## Considerations:

- Surface material
- Signage
- Types of exercise
- Where would they be most used



Stationary Bicycles



Exercise Nodes



# PATHWAYS



Meandering



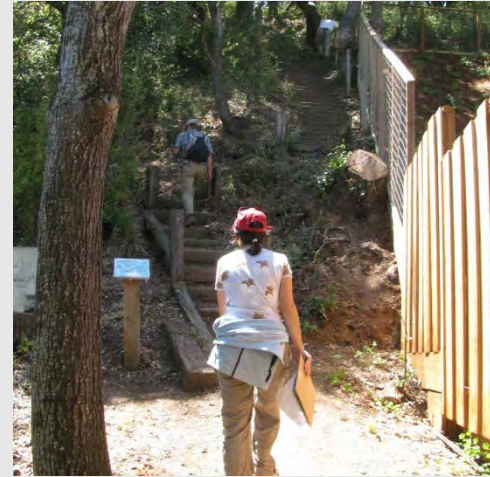
Arcing



Linear



Width Variability



Hillside Trail

## Considerations:

- Direction
- Nodes
- Purpose of path (running, walking, biking)



# PLAY



Zürichhorn Playground,  
Vetschpartner Landscape Architects



East Rancho Dominguez Park



Brooklyn Bridge Park,  
Michael Van Valkenburgh



Normand Park,  
Kinnear Landscape Architects

## Considerations:

- Surface material
- Play elements
- Age groups
- Accessibility
- Feature colors
- Water features



# SPECIAL USES



Skateboard or BMX Park



## Considerations:

- Are there any amenities missing in neighborhood?



Community Garden



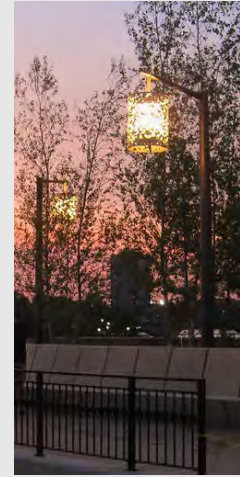
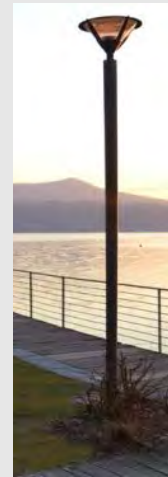
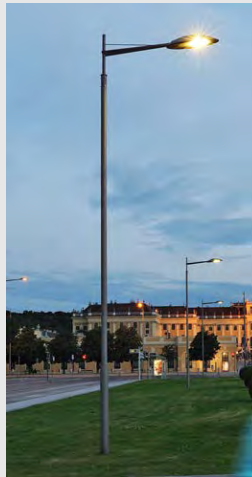


# SAFETY

## Fence



## Lighting



## Considerations:

- Access Points
- Style of lighting
- Security cameras
- Visibility
- Lines of sight and good observation points for law enforcement



# GATHERING



The Plaza at Harvard  
Stoss Landscape Urbansism

Playful Shape



Shading



Cooking



Metal



Wood

## Considerations:

- Types of seating
- Types of tables
- Ability to cook
- Site furniture needs (bike racks, trash and recycling, dogi-pots)
- Shade needs



# KIOSKS AND SIGNAGE



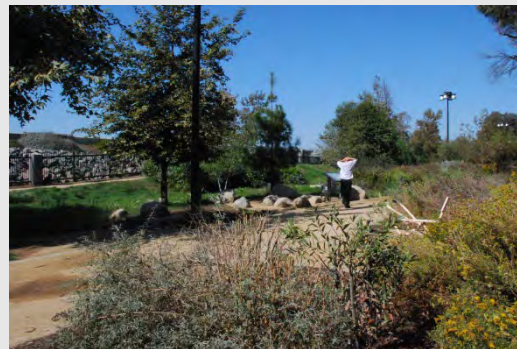
## Considerations:

- Trailhead needs
- Informational needs
- Is the community allowed to post?



# TREES AND PLANTING

## Tree Types



Naturalistic Planting

Formal Planting

Native

## Considerations:

- Evergreen or deciduous
- Large trees or small ones
- Flowers
- Grass



# ART



Fitness Theme



Cultural Theme



© Rafael Rivera 2013

Interactive Piece

## Considerations:

- Themes of the piece
- Medium (mural, sculpture, etc.)



# SITE DESIGN ACTIVITY



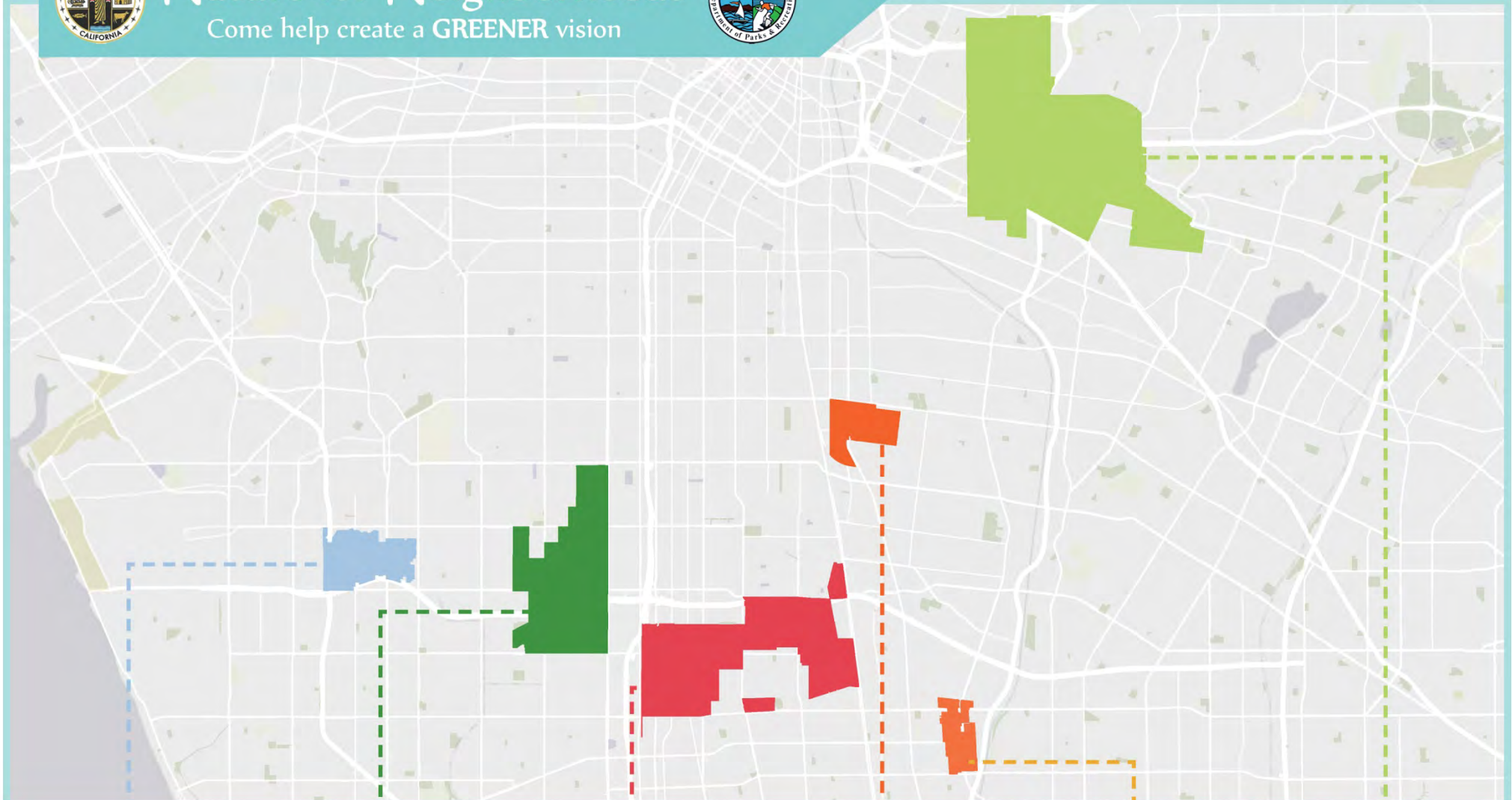


# Nature for Neighborhoods

Come help create a GREENER vision



PLACEWORKS



## COMMUNITY PARKS AND RECREATION PLANS

LENNOX

WESTMONT-  
WEST ATHENS

WILLOWBROOK

WALNUT  
PARK

EAST RANCHO  
DOMINGUEZ

EAST LOS  
ANGELES