

---

# **Appendix B**

## Tree Survey



<b>TREES TO BE REMOVED - BASELINE / OS2</b>				
#	<b>BOTANICAL NAME</b>	<b>COMMON NAME</b>	<b>CONDITION</b> (Good, Fair, Poor, Dead)	<b>REMARKS</b>
1	Pinus halepensis	Aleppo Pine	Fair	
2	Pinus halepensis	Aleppo Pine	Fair	
3	Cupressus sempervirens	Italian Cypress	Fair	Removed in OS2
4	Quercus agrifolia	Coast Live Oak	Fair	4" trunk diameter Removed in OS2
5	Ligustrum sinense	Privet	Fair	Removed in OS2
6	Cupressus sempervirens	Italian Cypress	Poor; Unstable root structure	Removed in OS2 Impacted by Constructability, tree removal may be required.
7	Cupressus sempervirens	Italian Cypress	Poor; Unstable root structure	Removed in OS2 Impacted by Constructability, tree removal may be required.
8	Cupressus sempervirens	Italian Cypress	Poor; Unstable root structure	Removed in OS2 Impacted by Constructability, tree removal may be required.
9	Cupressus sempervirens	Italian Cypress	Poor; Unstable root structure	Removed in OS2 Impacted by Constructability, tree removal may be required.
10	Cupressus sempervirens	Italian Cypress	Poor; Unstable root structure	Removed in OS2 Impacted by Constructability, tree removal may be required.
11	Cupressus sempervirens	Italian Cypress	Poor; Unstable root structure	Removed in OS2 Impacted by Constructability, tree removal may be required.
12	Cupressus sempervirens	Italian Cypress	Poor; Unstable root structure	Removed in OS2 Impacted by Constructability, tree removal may be required.
13	Cupressus sempervirens	Italian Cypress	Poor; Unstable root structure	Removed in OS2 Impacted by Constructability, tree removal may be required.
14	Cupressus sempervirens	Italian Cypress	Poor; Unstable root structure	Removed in OS2 Impacted by Constructability, tree removal may be required.
15	Cupressus sempervirens	Italian Cypress	Poor; Unstable root structure	Removed in OS2 Impacted by Constructability, tree removal may be required.
16	Cupressus sempervirens	Italian Cypress	Poor; Unstable root structure	Removed in OS2 Impacted by Constructability, tree removal may be required.
17	Cupressus sempervirens	Italian Cypress	Poor; Unstable root structure	Removed in OS2 Impacted by Constructability, tree removal may be required.
18	Cupressus sempervirens	Italian Cypress	Fair	Removed in OS2
19	Cupressus sempervirens	Italian Cypress	Fair	Removed in OS2
20	Arbutus x marina	Strawberry Tree	Fair	Removed in OS2
21	Washingtonia robusta	Fan Palm	Fair	Removed in OS2
22	Eucalyptus camaldulensis	Red Gum	Fair	Removed in OS2
23	Pinus halepensis	Aleppo Pine	Fair	Removed in OS2
24	Cupressus sempervirens	Italian Cypress	Dead	
25	Cupressus sempervirens	Italian Cypress	Dead	
26	Pinus halepensis	Aleppo Pine	Fair	Impacted by Constructability, tree removal may be required.
27	Pinus halepensis	Aleppo Pine	Fair	Impacted by Constructability, tree removal may be required.
28	Ficus benjamina	Benjamin's Fig	Good	Impacted by Constructability, tree removal may be required.
29	Washingtonia robusta	Fan Palm	Good	Impacted by Constructability, tree removal may be required.
30	Washingtonia robusta	Fan Palm	Good	Impacted by Constructability, tree removal may be required.
31	Cupressus sempervirens	Italian Cypress	Fair	Impacted by Constructability, tree removal may be required.
32	Cupressus sempervirens	Italian Cypress	Fair	Impacted by Constructability, tree removal may be required.
33	Cupressus sempervirens	Italian Cypress	Fair	Impacted by Constructability, tree removal may be required.
34	Cupressus sempervirens	Italian Cypress	Fair	Impacted by Constructability, tree removal may be required.
35	Pinus halepensis	Aleppo Pine	Fair	Impacted by Constructability, tree removal may be required.
36	Pinus halepensis	Aleppo Pine	Fair	Impacted by Constructability, tree removal may be required.
37	Pinus halepensis	Aleppo Pine	Fair	Impacted by Constructability, tree removal may be required.
38	Pinus halepensis	Aleppo Pine	Fair	Impacted by Constructability, tree removal may be required.
39	Pinus halepensis	Aleppo Pine	Fair	Impacted by Constructability, tree removal may be required.

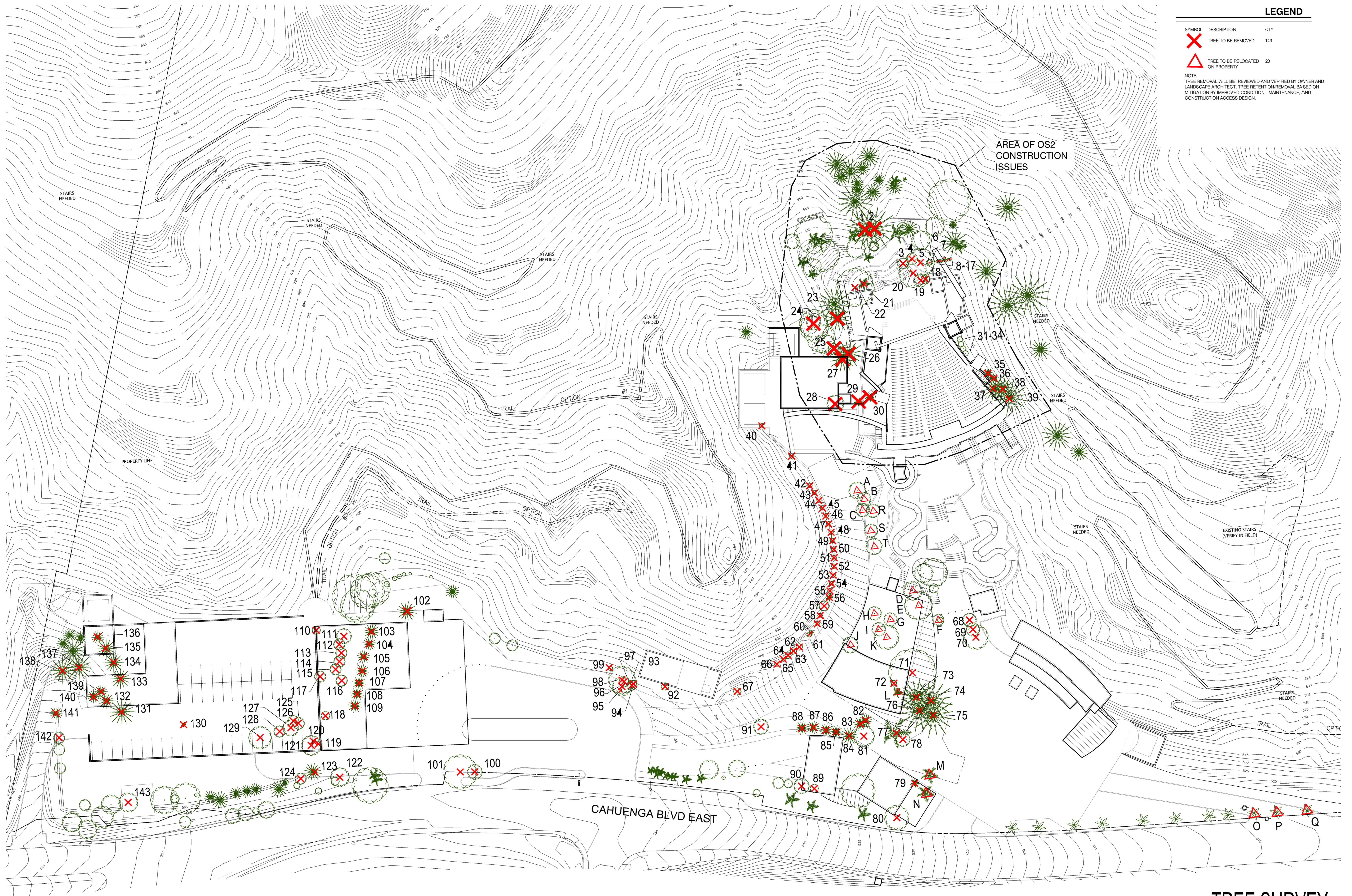
<b>TREES TO BE REMOVED - FULL BUILD OUT</b>				
#	<b>BOTANICAL NAME</b>	<b>COMMON NAME</b>	<b>CONDITION</b> (Good, Fair, Poor, Dead)	<b>REMARKS</b>
40	Cupressus sempervirens	Italian Cypress	Fair	
41	Cupressus sempervirens	Italian Cypress	Fair	
42	Cupressus sempervirens	Italian Cypress	Fair	
43	Cupressus sempervirens	Italian Cypress	Fair	
44	Cupressus sempervirens	Italian Cypress	Good	
45	Cupressus sempervirens	Italian Cypress	Good	
46	Cupressus sempervirens	Italian Cypress	Good	
47	Cupressus sempervirens	Italian Cypress	Fair	
48	Cupressus sempervirens	Italian Cypress	Fair	
49	Cupressus sempervirens	Italian Cypress	Fair	
50	Cupressus sempervirens	Italian Cypress	Fair	
51	Cupressus sempervirens	Italian Cypress	Fair	
52	Cupressus sempervirens	Italian Cypress	Fair	
53	Cupressus sempervirens	Italian Cypress	Fair	
54	Cupressus sempervirens	Italian Cypress	Fair	
55	Cupressus sempervirens	Italian Cypress	Fair	
56	Washingtonia robusta	Fan Palm	Good	
57	Eucalyptus camaldulensis	Red Gum	Fair	
58	Cupressus sempervirens	Italian Cypress	Good	
59	Cupressus sempervirens	Italian Cypress	Good	
60	Washingtonia robusta	Fan Palm	Good	
61	Cupressus sempervirens	Italian Cypress	Good	
62	Cupressus sempervirens	Italian Cypress	Good	
63	Cupressus sempervirens	Italian Cypress	Good	
64	Cupressus sempervirens	Italian Cypress	Fair	
65	Cupressus sempervirens	Italian Cypress	Fair	
66	Cupressus sempervirens	Italian Cypress	Fair	
67	Cupressus sempervirens	Italian Cypress	Fair	
68	Schinus terebinthifolius	Brazilian Pepper	Good	
69	Schinus terebinthifolius	Brazilian Pepper	Good	
70	Schinus terebinthifolius	Brazilian Pepper	Good	
71	Pinus halepensis	Aleppo Pine	Good	
72	Cupressus sempervirens	Italian Cypress	Good	
73	Pinus halepensis	Aleppo Pine	Good	
74	Pinus halepensis	Aleppo Pine	Good	
75	Pinus halepensis	Aleppo Pine	Good	
76	Pinus halepensis	Aleppo Pine	Good	
77	Phoenix canarensis	Canary Island Date Palm	Good	
78	Cupressus sempervirens	Italian Cypress	Good	
79	Phoenix canarensis	Canary Island Date Palm	Good	
80	Eucalyptus camaldulensis	Red Gum	Dead	
81	Eucalyptus camaldulensis	Red Gum	Good	
82	Pinus halepensis	Aleppo Pine	Good	
83	Pinus halepensis	Aleppo Pine	Good	
84	Pinus halepensis	Aleppo Pine	Good	
85	Pinus halepensis	Aleppo Pine	Good	
86	Pinus halepensis	Aleppo Pine	Good	
87	Pinus halepensis	Aleppo Pine	Good	
88	Pinus halepensis	Aleppo Pine	Good	
89	Podocarpus latifolius	Broadleaf Yellowwood	Good	
90	Podocarpus latifolius	Broadleaf Yellowwood	Good	

<b>TREES TO BE REMOVED - FULL BUILD OUT</b>				
#	<b>BOTANICAL NAME</b>	<b>COMMON NAME</b>	<b>CONDITION</b> (Good, Fair, Poor, Dead)	<b>REMARKS</b>
91	Eucalyptus camaldulensis	Red Gum	Good	
92	Cupressus sempervirens	Italian Cypress	Fair	
93	Yucca spp.	Yucca	Fair	
94	Yucca spp.	Yucca	Fair	
95	Citrus spp.	Citrus Tree	Fair	
96	Ligustrum sinense	Privet	Fair	
97	Yucca spp.	Yucca	Fair	
98	Yucca spp.	Yucca	Fair	
99	Yucca spp.	Yucca	Fair	
100	Yucca spp.	Yucca	Poor; Under stress	
101	Jacaranda mimifolia	Jacaranda Tree	Good	
102	Pinus pinea	Stone Pine	Good	
103	Pinus pinea	Stone Pine	Good	
104	Pinus pinea	Stone Pine	Good	
105	Pinus pinea	Stone Pine	Good	
106	Pinus pinea	Stone Pine	Good	
107	Pinus pinea	Stone Pine	Good	
108	Pinus pinea	Stone Pine	Good	
109	Pinus pinea	Stone Pine	Good	
110	Eucalyptus camaldulensis	Red Gum	Good	
111	Eucalyptus camaldulensis	Red Gum	Good	
112	Yucca spp.	Yucca	Fair	
113	Yucca spp.	Yucca	Fair	
114	Yucca spp.	Yucca	Fair	
115	Yucca spp.	Yucca	Fair	
116	Eucalyptus camaldulensis	Red Gum	Good	
117	Eucalyptus spp.	Eucalyptus Tree	Good	
118	Eucalyptus camaldulensis	Red Gum	Good	
119	Eucalyptus camaldulensis	Red Gum	Good	
120	Eucalyptus camaldulensis	Red Gum	Good	
121	Eucalyptus camaldulensis	Red Gum	Good	
122	Eucalyptus camaldulensis	Red Gum	Good	
123	Pinus halepensis	Aleppo Pine	Good	
124	Eucalyptus camaldulensis	Red Gum	Good	
125	Yucca spp.	Yucca	Fair	
126	Eucalyptus camaldulensis	Red Gum	Good	
127	Eucalyptus camaldulensis	Red Gum	Good	
128	Eucalyptus camaldulensis	Red Gum	Good	
129	Eucalyptus camaldulensis	Red Gum	Good	
130	Washingtonia robusta	Fan Palm	Good	
131	Pinus halepensis	Aleppo Pine	Fair	
132	Pinus halepensis	Aleppo Pine	Good	
133	Pinus halepensis	Aleppo Pine	Good	
134	Pinus halepensis	Aleppo Pine	Good	
135	Pinus halepensis	Aleppo Pine	Good	
136	Pinus halepensis	Aleppo Pine	Good	
137	Pinus halepensis	Aleppo Pine	Poor; Severe Lean	
138	Pinus halepensis	Aleppo Pine	Poor; Severe Lean	

<b>TREES TO BE REMOVED - FULL BUILD OUT</b>				
#	<b>BOTANICAL NAME</b>	<b>COMMON NAME</b>	<b>CONDITION</b> (Good, Fair, Poor, Dead)	<b>REMARKS</b>
I 39	Pinus halepensis	Aleppo Pine	Good	
I 40	Pinus halepensis	Aleppo Pine	Good	
I 41	Pinus halepensis	Aleppo Pine	Good	
I 42	Eucalyptus camaldulensis	Red Gum	Good	
I 43	Eucalyptus camaldulensis	Red Gum	Good	

<b>TREES TO BE RELOCATED</b>				
#	<b>BOTANICAL NAME</b>	<b>COMMON NAME</b>	<b>CONDITION</b> (Good, Fair, Poor)	<b>REMARKS</b>
A	<i>Olea europaea</i>	Olive Tree	Good	
B	<i>Salix</i> spp.	Willow	Good	
C	<i>Olea europaea</i>	Olive Tree	Good	
D	<i>Platanus racemosa</i>	California Sycamore	Good	
E	<i>Platanus racemosa</i>	California Sycamore	Good	
F	<i>Quercus agrifolia</i>	Coast Live Oak	Good	8" trunk diameter
G	<i>Platanus racemosa</i>	California Sycamore	Good	
H	<i>Platanus racemosa</i>	California Sycamore	Good	
I	<i>Platanus racemosa</i>	California Sycamore	Good	
J	<i>Liquidambar styraciflua</i>	Sweet Gum	Good	
K	<i>Quercus agrifolia</i>	Coast Live Oak	Good	14" trunk diameter
L	<i>Phoenix canarensis</i>	Canary Island Date Palm	Good	
M	<i>Phoenix canarensis</i>	Canary Island Date Palm	Good	
N	<i>Phoenix canarensis</i>	Canary Island Date Palm	Good	
O	<i>Washingtonia robusta</i>	Fan Palm	Good	
P	<i>Washingtonia robusta</i>	Fan Palm	Good	
Q	<i>Washingtonia robusta</i>	Fan Palm	Good	
R	<i>Quercus agrifolia</i>	Coast Live Oak	Good	12" trunk diameter
S	<i>Quercus agrifolia</i>	Coast Live Oak	Good	10" trunk diameter
T	<i>Platanus racemosa</i>	California Sycamore	Good	





**LEGEND**

SYMBOL	DESCRIPTION	QTY.
X	TREE TO BE REMOVED	143
△	TREE TO BE RELOCATED ON PROPERTY	20

NOTE:  
TREE REMOVAL WILL BE REVIEWED AND VERIFIED BY OWNER AND LANDSCAPE ARCHITECT. TREE RETENTION/REMOVAL BASED ON MITIGATION BY IMPROVED CONDITION, MAINTENANCE, AND CONSTRUCTION ACCESS DESIGN.



**Benjamin V. Feldmann, RLA, ASLA, LEED AP, Senior Associate**

**EDUCATION**

University of California, Berkeley,  
*Master of Urban Design*

California Polytechnic State  
University, San Luis Obispo,  
*Bachelor of Landscape  
Architecture*

**PROFESSIONAL LICENSES**

California #5631

**ORGANIZATIONS**

American Society of  
Landscape Architects

Landscape Architects Technical  
Committee, California

U.S. Green Building Council,  
LEED AP BD+C

Urban Land Institute

**AWARDS/PUBLICATIONS**

GOOD Design, Urban Challenge,  
Spring 2011

AIA San Francisco,  
Citation Award, 2010 - *PANAMA  
PACIFICO*

AIA East Bay, Unbuilt Design  
Award, 2010  
*LOS ANGELES REDCAR*

San Francisco Bay Conservation  
and Development Committee,  
Rising Tides Competition,  
Honorable Mention, 2009  
*EMBRACING THE RISE*

*Ben Feldmann, a Senior Associate with ML+A, is both landscape architect and urban designer who emphasizes the integration of sustainable methodologies, contextual adaptation, and systems thinking. He brings over 12 years of experience working on projects throughout California and the U.S. as well as abroad including Asia, Central America and Europe. Furthering the aim for resilient communities and urban regeneration, Ben seeks out solutions that greatly enhance living environments, evoking ecological synergies between built, social and natural realms. His design approach looks to provide innovative solutions that build upon the unique qualities to the site's context, climate and character.*

**PROFESSIONAL EXPERIENCE**

2010-Present Mia Lehrer + Associates, Senior Associate  
2008-2010 Perkins + Will, Senior Urban Designer  
2006-2010 BVF Designs, Independent Consultant  
2006-2007 Institute of Urban and Regional Development,  
University of California Berkeley, Consultant  
2004-2005 Centro de Diseño Arquitectura y Construcción,  
Tegucigalpa, (CEDAC) Honduras, Instructor  
2000-2004 Hellmuth, Obata+Kassabaum, Inc. (HOK), Associate

**ACADEMIC EXPERIENCE**

2011 Coordinator, XED Course, *Landscape Urbanism:  
Recalibrating the Megalopolis*, University of  
Southern California  
2010 Guest Juror, Landscape Architecture Department,  
University of Southern California  
2007-2010 Guest Juror and Visiting Lecturer, College of  
Environmental Design, University of CA, Berkeley

**RELEVANT PROJECT EXPERIENCE**

Cidade da Copa, Schematic Design – Recife, Brazil  
Confluence Park – Los Angeles, CA  
John Anson Ford Amphitheater – Los Angeles, CA  
North Atwater Multi-Modal Crossing – LA River, Los Angeles, CA  
Nuevo Sur Mixed Use Development, Urban Plan and Site  
Design – Monterrey, Mexico  
Piggyback Yard Conceptual Master Plan – Los Angeles, CA  
Rio 2016 Olympic Park Master Plan Competition – Sao Paulo, Brazil  
Santa Monica Civic Auditorium Master Plan – Santa Monica, CA  
Tiete River Conceptual Study – Sao Paulo, Brazil  
Union Station Master Plan – Los Angeles, CA  
Wilshire Boulevard Temple Camps & Conference Center,  
Ventura County Line Master Plan – Los Angeles, CA



**Benjamin V. Feldmann, RLA, ASLA, LEED AP, Senior Associate**

**PREVIOUS PROJECT EXPERIENCE (CONTINUED)**

Children's Discovery Museum, Amphitheatre/Courtyard  
Renovation – San Jose, CA  
Comprehensive Master Plan for Al Batinah Area –  
Albatinah Region, Oman  
Concord NWS Reuse, TOD Area Plan – Concord, CA  
Harbour Boulevard Streetscape Study – San Pedro, CA  
Implementation Plan for Sustainable Tourism Development –  
Koh Lanta, Thailand  
Memorial Garden, St. Anne's Episcopal Church – Reston, VA  
Panama Pacifico Site Development Plan –  
Former Howard Air Base, Panama  
Site Design and Schematic Development, Li Hua Center –  
Beijing, China  
Treasure Island Design for Development – San Francisco, CA  
Zoning and Design Guidelines for Future Development –  
Copán, Honduras

**LECTURES**

2011 The Piggyback Yard – Municipal Green Building Conference  
and Expo, Los Angeles  
2011 Los Angeles REDCAR – Council of Educators in Landscape  
Architecture, Los Angeles  
2010 REDCAR Colloquium – AIASF Architecture + the City,  
California College of Art, San Francisco  
2010 Los Angeles REDCAR – Just Metropolis Conference,  
UC Berkeley  
2010 The Piggyback Yard – Just Metropolis Conference,  
UC Berkeley



**Dawn Dyer, RLA, ASLA, LEED AP, Associate**

**EDUCATION**

Rhode Island School of Design  
Providence, Rhode Island  
Master of Landscape Architecture  
2006

New Jersey Institute of  
Technology  
Newark, New Jersey  
Bachelor of Architecture  
2004

**PROFESSIONAL LICENSES**

CALIFORNIA #5788

**AWARDS | COMPETITIONS**

Natural History Museum  
ASLA/Southern California Merit  
Award for Institution Design  
2012

Gubei Pedestrian Promenade  
ASLA/Southern California Award  
of Excellence  
2012

Gubei Pedestrian Promenade  
ASLA/Southern California  
Commercial Design Honor Award  
2012

Anning River  
ASLA/Southern California Merit  
Award, Planning & Analysis  
2012

Chongming Island North Lake  
ASLA National Honor Award  
2007

Kaoshiung Waterfront Renovation  
Award of Excellence  
2006

*Dawn Dyer has 8 years of experience in both landscape architecture and architecture. Ms. Dyer is responsible for the design and planning through construction administration on a wide range of projects including civic spaces, college campuses, urban parks, mixed use developments and residential projects. She is committed to sustainability, landscape systems and the creating designs with innovative material use and technologies.*

**PROFESSIONAL EXPERIENCE**

2010-Present Mia Lehrer + Associates, Los Angeles, CA  
2006-2010 SWA Group, Los Angeles, CA  
2005 John Berg Design Architects, New York, NY  
2003-2004 Ecoplan Architects, Englewood Cliffs, NJ  
2000-2003 Tricarico Group, Wayne, NJ

**PROJECT EXPERIENCE**

John Anson Ford Theatres Renovation – Hollywood, CA  
Confluence Plaza – Los Angeles, CA  
El Dorado Residence – Los Cabos, Mexico  
El Segundo Business Park – El Segundo, CA  
Glendale Animation Studio – Glendale, CA  
Hart High School – Santa Clarita, CA  
Pomona first Baptist Church Masterplan – Pomona, CA  
Mount St. Mary's College Chalon Campus – Los Angeles, CA  
Natural History Museum, North Campus – Los Angeles, CA  
Owens Lake Dust Mitigation Program Phase 7a – Lone Pine, CA  
PiggyBack Yard Intermodal Facility – Los Angeles, CA  
The Village Mixed Use Development – Santa Monica, CA  
Sony Studios Main Street Schematic Design – Culver City, CA  
Universal Studios, Area Attraction – Universal City, CA

**PREVIOUS PROJECT EXPERIENCE**

Anning River Master Plan, South Miyi County – Sichan, China  
Beizhi Waterfront Master Plan – Fuyang, China  
Beverly Hills Hotel Bungalows 23 and 24 – Beverly Hills, CA  
College of the Desert Classroom Building – Palm Desert, CA  
Fairmont Scottsdale Princess Hotel Gold Villas – Scottsdale, AZ  
Gubei Gold Street Pedestrian Promenade – Shanghai, China  
Kaoshiung Waterfront Renovation – Kaoshiung, China  
Marriot Burbank Hotel – Burbank, CA  
Ritz Carlton Laguna Niguel Masterplan – Laguna Niguel, CA