

Proposed Littlerock OHV Park

Community Meeting

November 20, 2013



Introductions

County of Los Angeles Department of Parks and Recreation:

- Robert Ettleman, Project Manager
- Kathy King, Chief of Planning

Consultants: The Planning Center | DC&E

- Melissa Erikson
- Marissa Aho
- Shannon Kimball
- Tyler Van Pelt

The Planning Center | DC&E

- Professional Values: To envision responsible conservation planning and create great places
- Multi-disciplinary Firm
- Trail planning in County Parks natural areas
- Trail assessments in Fifth Supervisorial District

Agenda

- Introductions
- Establish ground rules
- Purpose of today's community meeting
- Background on OHV park planning guidelines
- About the Littlerock site
- Concerns: What we've heard!
 - Task Force Findings
- Next Steps: Where do we go from here?
- Comments Stations: We want to hear from you!

Ground Rules

- Follow agenda
- Hold comments for “comment stations”
- Listen to others
- Don’t interrupt
- Show mutual respect
- Acknowledge differences of opinion

Purpose of Meeting

- Discuss site selection process and background for the proposed Littlerock OHV recreation park;
- Provide information about the proposed Littlerock OHV recreation park;
- Address preliminary concerns and clarify information; and
- Gather public input.



Project Background

Proposed Littlerock OHV Park

Department of Parks & Recreation

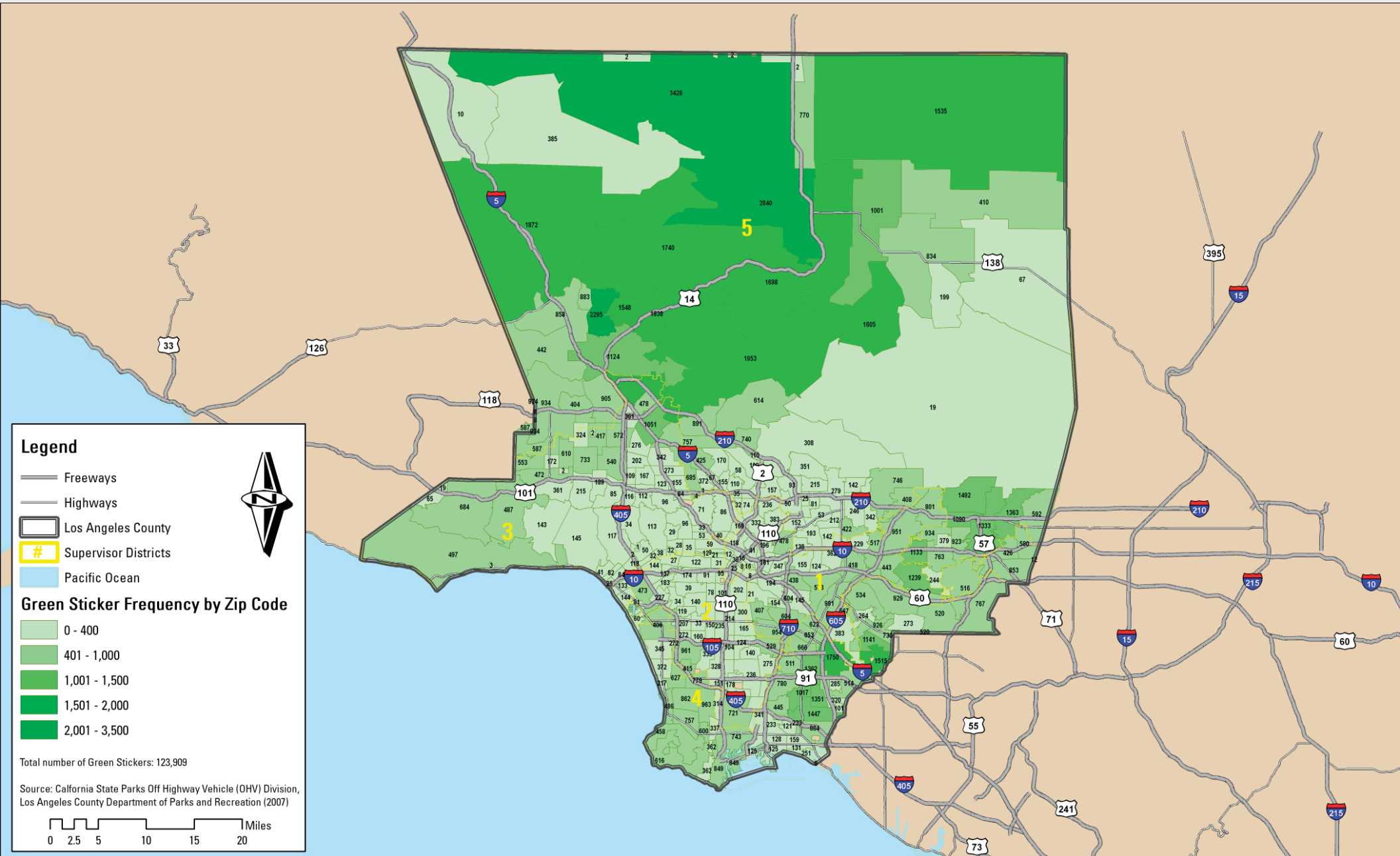


- **Mission:** We will provide the residents and visitors of Los Angeles County with quality recreational opportunities that promote a healthy lifestyle and strengthen the community through diverse physical, educational and cultural programming, and will enhance the community environment by acquiring, developing and maintaining County parks, gardens, golf courses, trails, and open space areas.

OHV Planning in the County

- One of the few Counties with a dedicated OHV Planner;
- Per 2007 data, Los Angeles County has the highest number of green sticker-registered (off highway vehicles) vehicles in the State;
- Green sticker-registered vehicles are not street legal though meet air quality standards; and
- Registered OHV users are dispersed throughout the County with the highest frequency being in the northern portion of the County.

OHV Planning in the County



Proposed Littlerock OHV Park

Development of OHV Park Planning Guidelines

- Started in 2008 – Completed in 2010
- Involved community members and stakeholders
- Established goal to increase OHV park space and recreational choices
- Included an advisory committee, multiple public workshops, media outreach and project website
- Community workshops were held throughout the County; locally at Jackie Robinson Park and Castaic Sports Complex.

OHV Park Planning Guidelines

- Sets parameters for future potential OHV park locations, characteristics, and operations
- Outlines the types of spaces where OHV facilities may be appropriate
- Addresses environmental conditions, land use, noise, accessibility, safety, visibility, and recreation
- Clarifies that future OHV facilities will be subject to environmental review

Purposes for Using Guidelines

- Identify appropriate locations for new OHV facilities recognizing existing ecological systems, wildlife corridors, OHV areas, staging areas, and trails
- Evaluate suitability of proposed OHV park development
- Guide planning, and design of new OHV parks
- Prioritize funding contributions for upgrades to existing OHV parks, staging areas, and trail systems managed and operated by other governmental and nonprofit entities

County OHV Park Types

- **Urban OHV Park:** A compact recreation facility located within the developed areas of Los Angeles County dedicated to recreational use, education, and safety training
- **Regional OHV Park:** A larger open space park located outside of urbanized areas of Los Angeles County and having a regional draw and diverse recreational opportunities
- **Regional OHV Trails and Staging Areas:** Small facilities that improve access to existing authorized motorized trails and recreational areas

Regional OHV Park

- Envisioned as larger open space park with diverse opportunities for recreating on trails and/or in designated areas, including technical and safety courses
- Support a variety of OHV types
- Located outside urbanized areas with regional draw
- Potentially include preservation of natural areas and resources
- Consider disturbed areas with long history of unauthorized OHV use as candidate sites
- Typically 100 acres or more in size

Regional OHV Park Goals and Guidelines

- Natural resource protection
- Community compatibility
- Diverse recreational opportunities
- OHV trail connectivity
- Potential partnerships for park development, operations, and enforcement
- Operations and maintenance

Regional OHV Trail(s) and Staging Areas

- New connections and/or staging areas to improve access to existing authorized motorized trails and recreation areas managed by other governmental agencies



Proposed Littlerock OHV Park

Regional OHV Trail(s) and Staging Areas Goals and Guidelines

- Connections and community compatibility
- Natural resource protection/preservation



Proposed Littlerock OHV Park

OHV Park Review Processes

1. Identify potential site for OHV park, trail or staging area
2. Determine appropriate park type:
 - Urban OHV park
 - Regional OHV park
 - Regional OHV trail and staging area
3. Determine if site is compliant with the guidelines for that particular park type
4. Prepare conceptual design and allow Department of Parks and Recreation to evaluate feasibility

OHV Park Review Process

5. Evaluation of conceptual design and compliance with OHV guidelines utilizing public involvement
6. Final design and environmental review
7. Project approval by the Board of Supervisors



County OHV Funding

- Annual in-lieu funds received from State Parks' Off-Highway Motor Vehicle Recreation (OHMVR) Division
- Funding is linked to recreation – providing more OHV recreation opportunities results in receiving more OHV funding
- Annual OHMVR Division Grants:
 - Acquisition & Development
 - Operations & Maintenance
 - Restoration
 - Law Enforcement
 - Education & Safety
 - Planning

Process for Proposed OHV Site

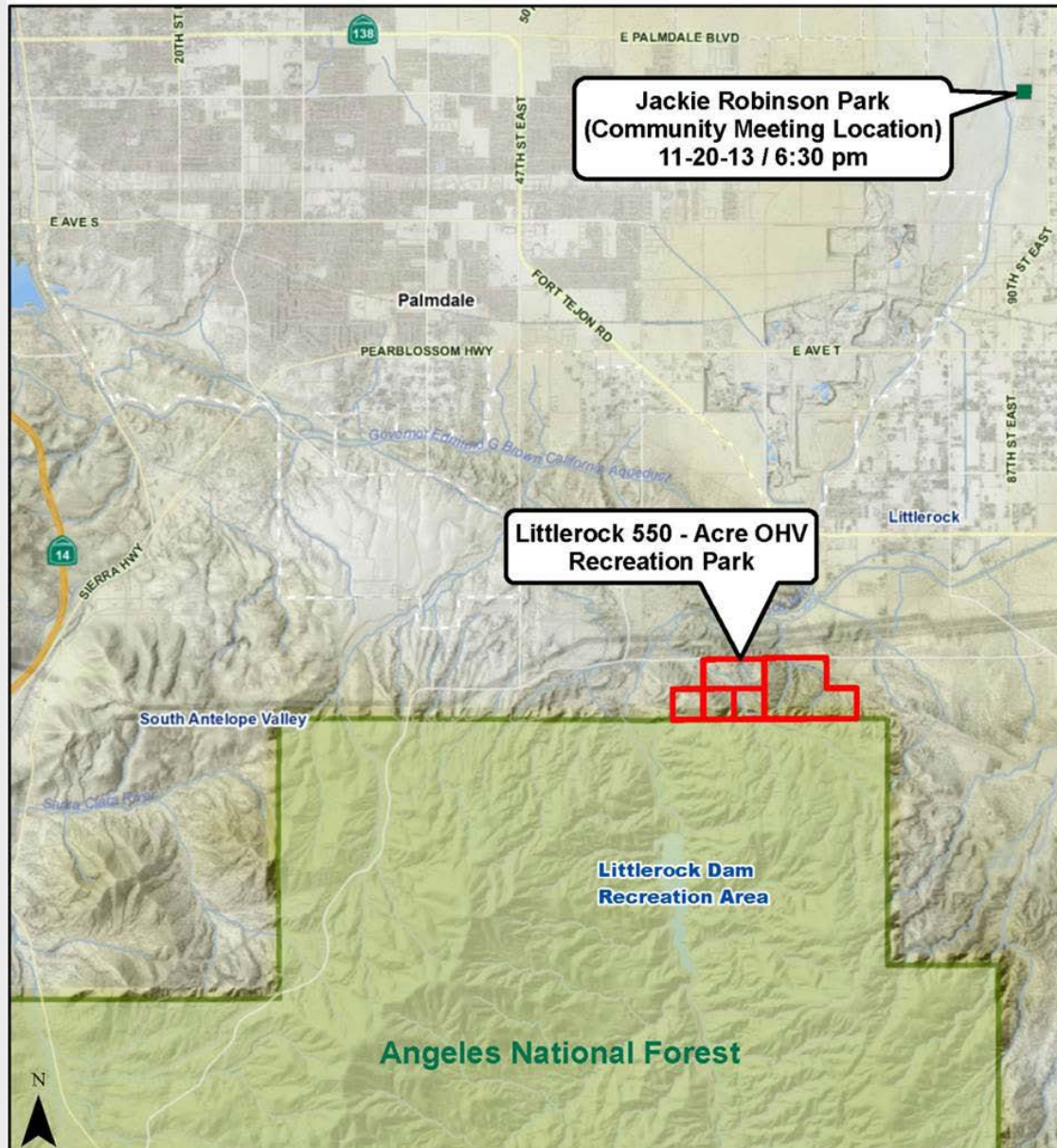
- Conducted feasibility studies consistent with the OHV planning guidelines on the following:
 - Urban OHV Park sites throughout the County, 5 to 20 acres in size;
 - Various Regional OHV Park sites, all over 100 acres in size, focusing on one recreation park site for potential development; and
 - Various OHV Staging Areas
- Prioritized feasible sites based on land availability (willing seller) and Federal/State partnership opportunities.



Littlerock Site

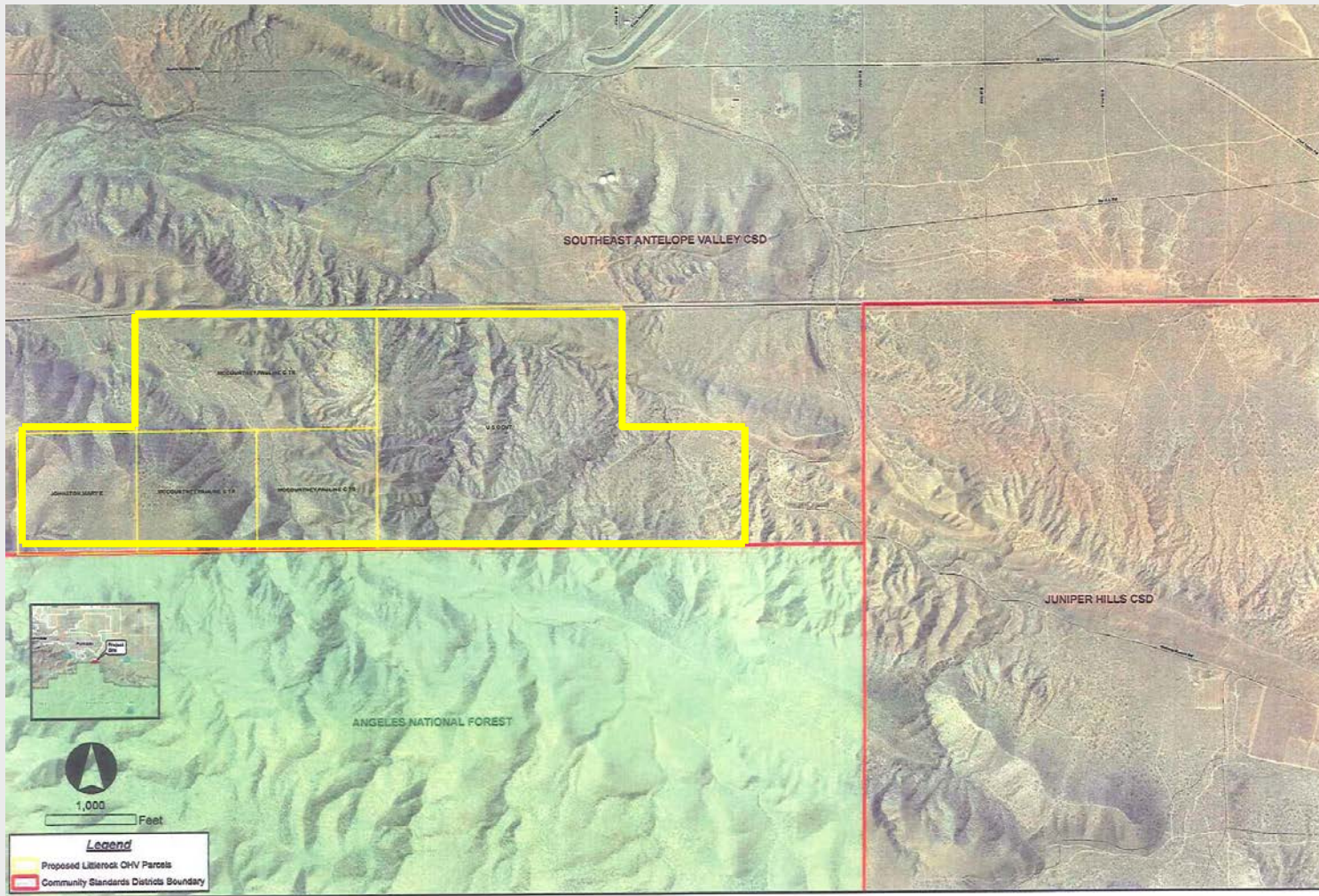
Proposed Littlerock OHV Park

Proposed Littlerock OHV Park Map



Proposed Littlerock OHV Park

Littlerock Site



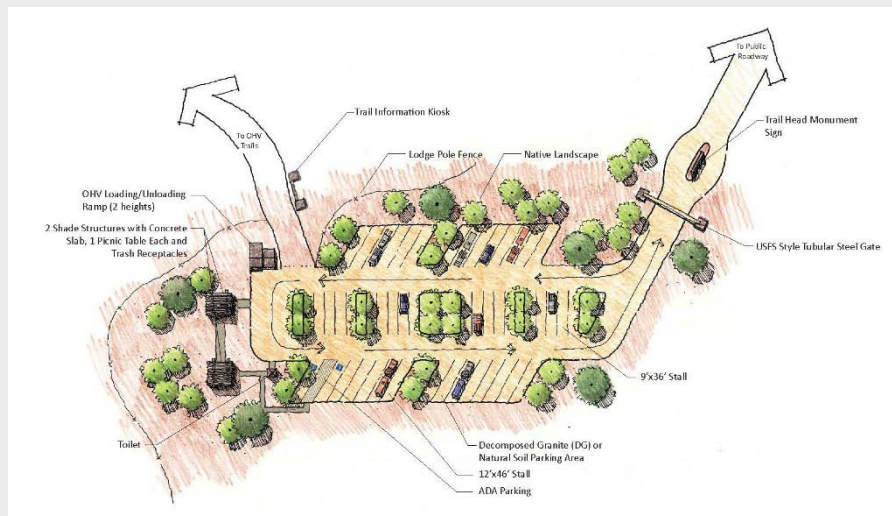
Proposed Littlerock OHV Park

Project Objectives

- Create an OHV recreation park with staging area;
- Utilize State acquisition funds granted to County for an OHV facility;
- Manage off-highway vehicle recreational activities currently occurring at the project site;
- Delineate internal park trails, including specialized technical and safety courses for OHV activities; and
- Step-up enforcement within park and the surrounding area to monitor unauthorized activity;
- Invest in the maintenance and operation of the site for OHV park purposes; and
- Engage community to support clean-up efforts including community watch.

Project Improvements

- Proposed improvements may include perimeter fencing/gates, native landscaping and re-vegetation of unsustainable trails, picnic area (shade structures, tables, restroom(s), & trash receptacles, vehicle & trailer parking, monument signage, trail kiosks and signage, and emergency telephone/communications
- Identify opportunities to incorporate non-motorized recreational activities within the park.



Proposed Littlerock OHV Park

Littlerock Site Advantages

- Large concentration of OHV users in northern half of the County, specifically in the Antelope Valley;
- Large acreage potential – 550 acres – with few adjacent land owners;
- Public lands to the north, east and south of the proposed OHV park site;
- Nearest residence from the proposed staging area in park is located roughly 2.3 miles east and 2/3rds mile west over undulating terrain;
- Mitigate existing illegal dumping currently on proposed OHV site and surrounding areas.

Littlerock OHV Site Opportunities

- Provide Sheriff patrol to curtail illegal activities (trespassing, use of fire-arms, etc.) and aid in emergency situations;
- Provide opportunities for multi-generational OHV use (programming, education, safety, etc.);
- Identify opportunities for compatible recreational uses;
- Provide opportunities for wildlife and natural resource protection, as area is currently not managed; and
- Utilize existing trails
- Manage site for future generations.



Concerns and Responses

Proposed Littlerock OHV Park

General Concerns & Responses

- **Concern:** Received various comments about safety issues pertaining to the site.
- **Response:** The County values all comments received and convened a Safety, Enforcement and Fire Prevention Task Force (Task Force) comprised of the following agencies to address community concerns:
 - County Fire Station 92
 - Fire Prevention Bureau
 - Angeles National Forest Service
 - County Parks Bureau (LACO Sheriffs)
 - Chairperson of State Parks Off-Highway Vehicle Commission.



Concerns and Responses

- **Concern:** Fire danger - Littlerock, Juniper Hills area and Angeles National Forest are designated high fire zones
- **Response:** The Task Force recommended the following measures to mitigate fires on site:
 - No open barbeques
 - No portable barbecues
 - No smoking
 - Fire extinguishers will be required in all vehicles using the proposed OHV park
 - Parks Bureau deputies and Park staff will enforce the No-Fire-Policy.
 - All vehicles must have proper spark arrestor and muffler

Concerns and Responses

- **Concern:** Increased vandalism and trespassing
- **Response:** The proposed OHV park site will have Sheriff-Parks Bureau patrol and enforcement within park and surrounding the park boundary.



Proposed Littlerock OHV Park

Concerns and Responses

- **Concern:** Increased dumping
- **Response:** The proposed OHV park will have Sheriff-Parks Bureau patrol and enforcement within park and surrounding the park boundary. Antelope Valley Illegal Dumping Task Force has been contacted. County and SD5 are working diligently to stop the illegal dumping that is presently taking place.



Concerns and Responses

- **Concern:** The proposed OHV park is adjacent to a Wilderness area
- **Response:** The proposed OHV park is not adjacent to a Wilderness area. The designated Wilderness area is within the Angeles National Forest Service area five miles southeast of the proposed OHV park site.



Proposed Littlerock OHV Park

Concerns and Responses

- **Concern:** The proposed OHV park will cause damage to wildlife and plants, etc.
- **Response:** Post and cable will be utilized as perimeter boundary fencing where appropriate, to permit continued wildlife connectivity. Park will only be open from sunrise to sundown, thereby not interfering with night-time wildlife activities.

Concerns and Responses

- **Concern:** The proposed OHV park has connectivity to the Pacific Crest Trail (PCT), which is an equestrian and hiking only trail.
- **Response:** The PCT does not have connection to the proposed OHV park site. The PCT is approximately nine miles southwest of the proposed OHV park site over undulating Angeles National Forest Service land, some of which is presently closed to the public.

Concerns and Responses

- **Concern:** Increased noise
- **Response:** Parks Bureau will check all vehicles for current vehicle registration, & spark arrestors/mufflers. Parks Department will abide by State OHV sound regulations, and vehicles will be checked for both spark arrestors, and sound compliance. If not in compliance citations will be issued, and not permitted within or outside of the park.

Concerns and Responses

- **Concern:** Increased dust - wind current generally flows southeast toward Juniper Hills
- **Response:** Wind direction varies seasonally with predominant wind flows from west to east or from southwest to northeast per Western Regional Climate Center.

Concerns and Responses

- **Concern:** No toilets, so area will be inundated with waste
- **Response:** If the County were to move forward with the proposed OHV Park, we will engage in a design process that is sustainable and meets regulatory requirements, and install appropriate utilities.

Concerns and Responses

- **Concern:** Overflow OHV users from park will recreate near the park
- **Response:** All County Parks utilize the Parks Bureau, which are County Sheriffs. The Parks Bureau utilizes off-road vehicles and equestrian patrol, so are prepared to enforce park regulations within park and within surrounding area of the park. Parks Bureau will also be available to assist with medical emergencies, whether in the park or nearby, etc.



Next Steps

Proposed Littlerock OHV Park

Next Steps

- County successfully applied for OHMVR Division Acquisition Grant; 3 years to use the grant or lose the funding
- Gather additional public comments
- Summary of this evening's comments to be emailed to sign-in list and posted on County website at:
http://parks.lacounty.gov/wps/portal/dpr/Parks/Off_Highway_vehicles



Comment Stations

Proposed Littlerock OHV Park

Commenting Process

- 4-6 comment stations in the gymnasium
- Visit any station to have your comments recorded for the County
- Comment cards also available at entry doors if you want to provide additional written comments
- Comments may also be emailed to rettelman@parks.lacounty.gov
- If no comments, there is a sign-in sheet, so you can be added to email news about the project



Thank You
for your interest and participation!

Proposed Littlerock OHV Park