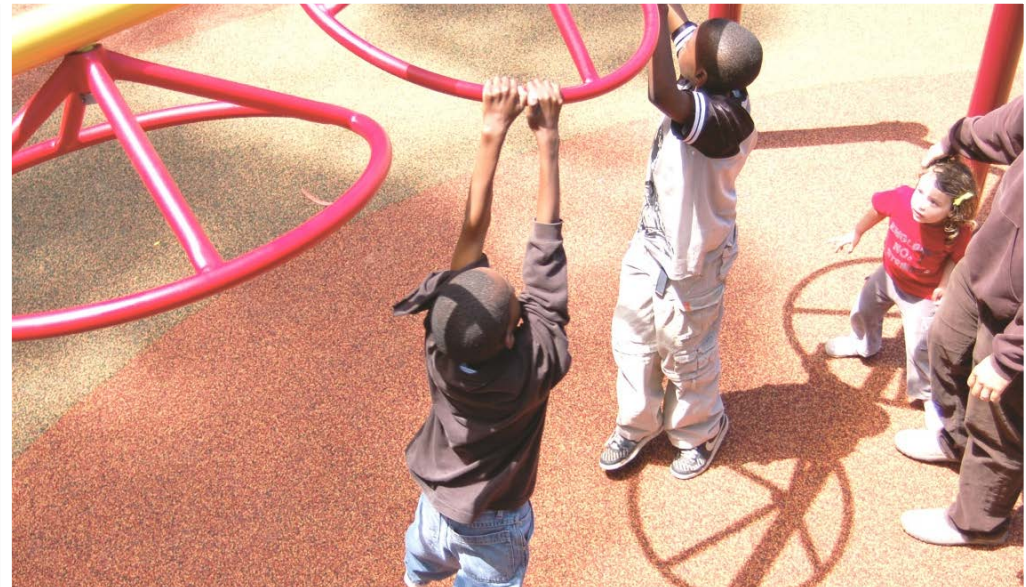




# Nature for Neighborhoods

Communities creating a GREENER vision



COMMUNITY PARKS AND RECREATION PLAN

WEST ATHENS - WESTMONT



# Community Parks and Recreation Plans

- Competitive grant award from the Strategic Growth Council (SGC) to DPR for \$1,000,000 to prepare Six Community Parks and Recreation Plans
  
- Parks and recreation plans for six unincorporated communities:
  - East Los Angeles
  - East Rancho Dominguez
  - Lennox
  - Walnut Park
  - Willowbrook
  - West Athens - Westmont

# Grant Objectives

- Create parks and green space
- Improve infrastructure
- Improve air and water quality
- Protect natural resources
- Promote water conservation and energy efficiency
- Help the economy



# Outcomes

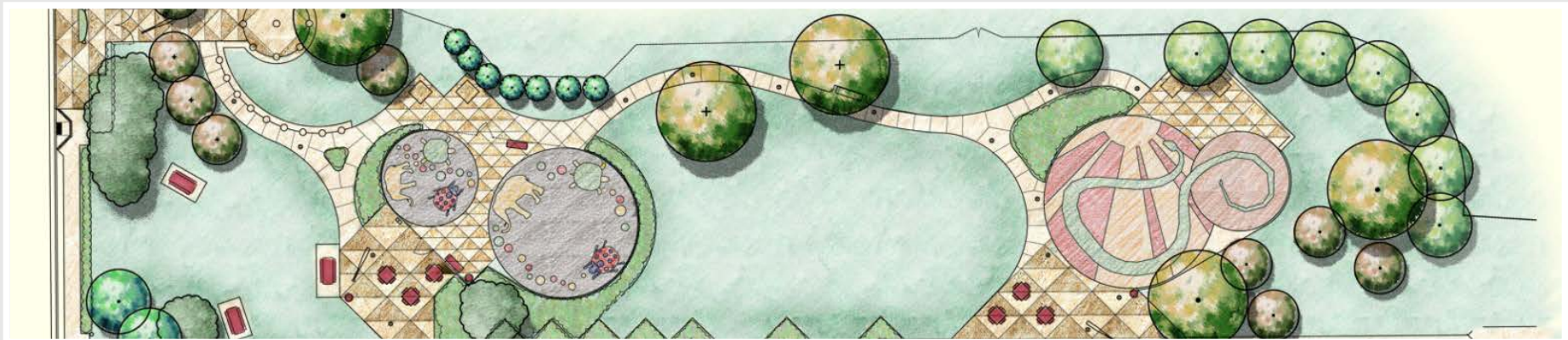
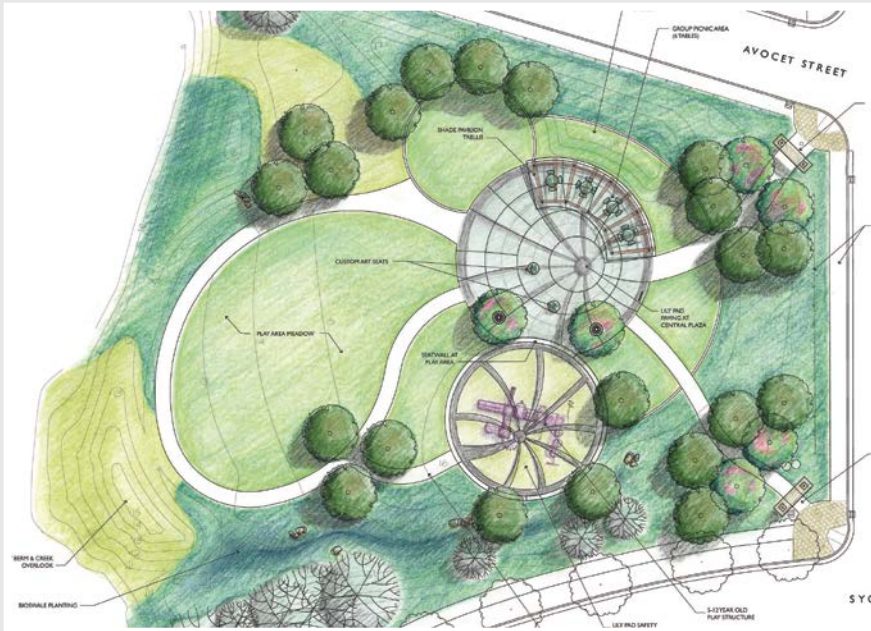
- Park Design Concept Plans
- Land and Funding Opportunities identified
- Joint Use Opportunities and Strategies





# Outcomes

- Community Park and Recreation Plans developed through a comprehensive community input process





# Outcomes

- Established Relationships with Community Members and Partner Agencies



# Project Team

## Los Angeles County Department of Parks and Recreation

- Norma E. Garcia, Deputy Director
- Clement Lau, Project Manager/Facilities Planner

## Consultant Team

- Isabelle Minn, Project Manager, The Planning Center | DC&E
- Alina Bokde, Executive Director, Los Angeles Neighborhood Land Trust
- Marcus Tyrone, Community Organizer, Los Angeles Neighborhood Land Trust
- Emily George, Community Organizer, Los Angeles Neighborhood Land Trust



# The Planning Center | DC&E

## Creating Healthy Outdoor Environments





# Outreach and Community Involvement

- The Los Angeles Neighborhood Land Trust



# Community Engagement Strategy

- Stakeholder Meetings
- Community Surveys
- Focus Groups
- Community Input Workshops
- Tabling
- Tours
- Community Outreach Fair
- Youth Engagement Activities



# Key Themes from Outreach Efforts

## ■ PARK AMENITIES

- Gymnasium
- Youth basketball court
- Walking path
- Exercise equipment
- Sports fields (soccer and football)

## ■ SAFETY

- Gang Intervention
- Safe Routes to School
- Community ownership of green spaces

## ■ PROGRAMS

- Youth Sports
  - Basketball
  - Football
- Senior Programs

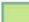




## ■ JOINT USE

- Sheriff's Youth League and Westmont Elementary School
- St. Francis X. Cabrinit Catholic Church and School





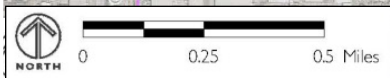
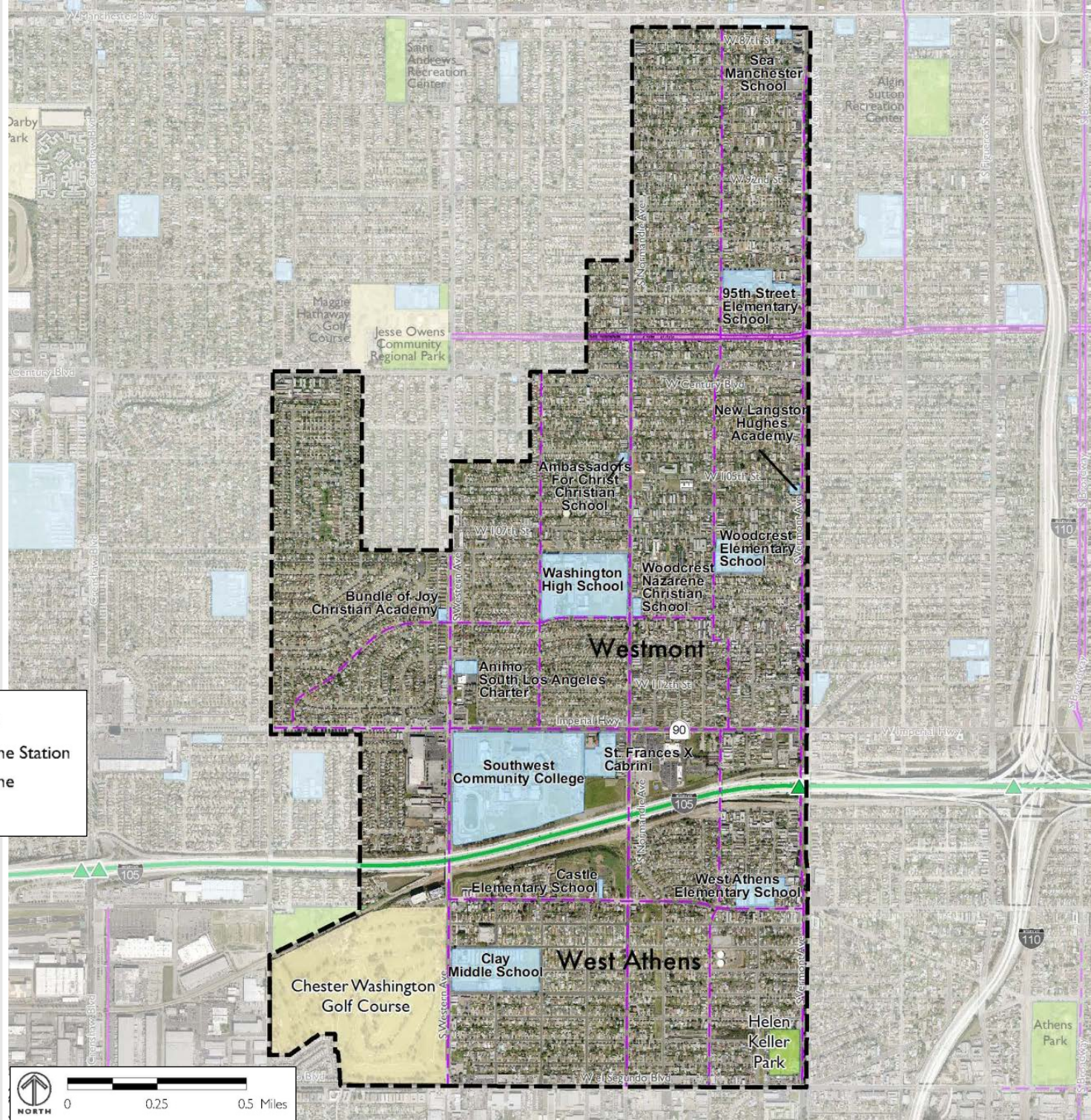


# Existing Parks and Schools

Open Space and School	Public Transit Network
 County Parks	 Metro Rail Green Line Station
 Other Open Space	 Metro Rail Green Line
 Schools	

Bicycle Network
 Existing Bike Routes
 Proposed Bike Routes





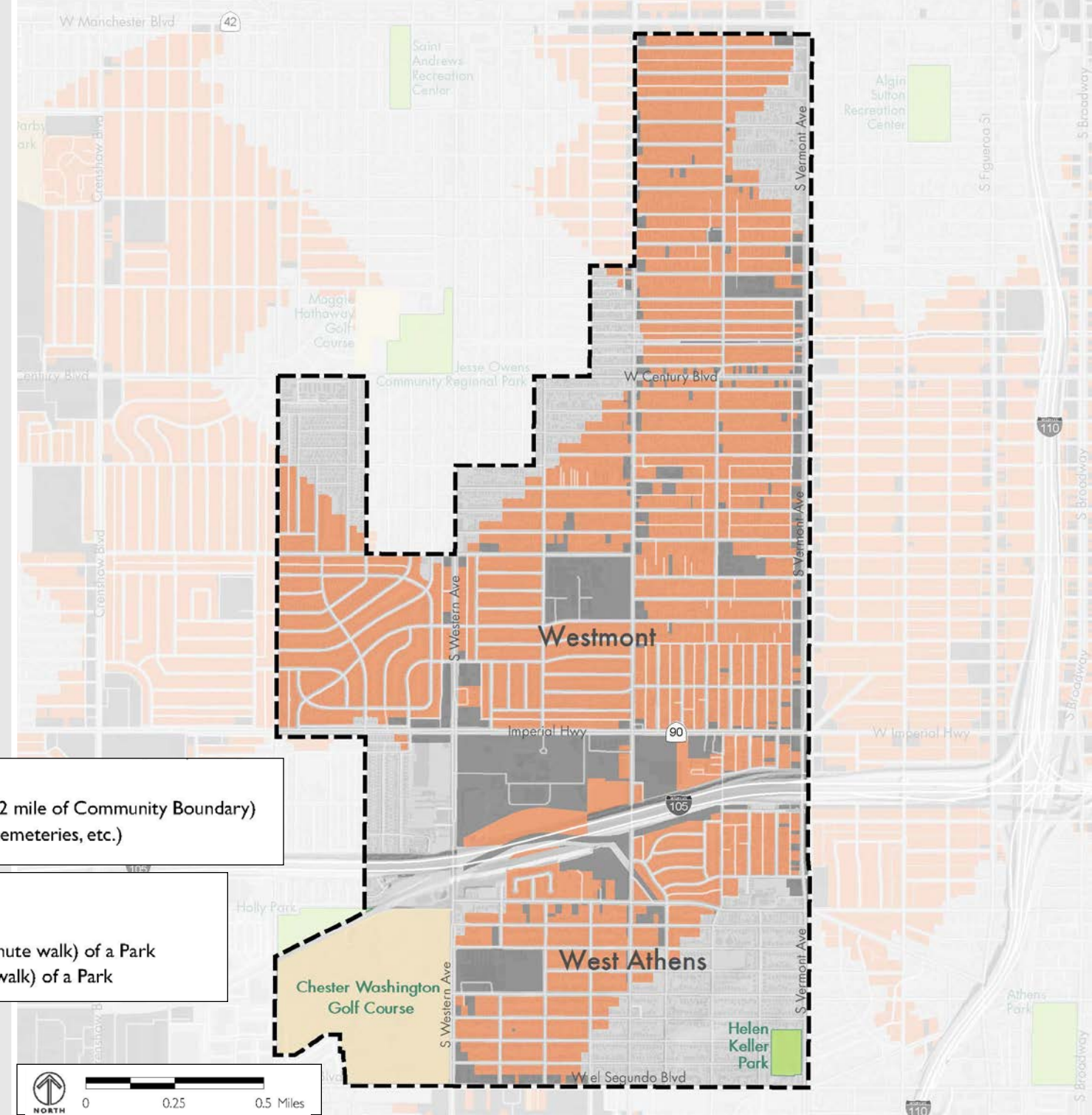
# Helen Keller Park

Park Name	Size	Park Amenities	Play	Recreation Amenities	Buildings/Structures
HELEN KELLER PARK (CLOSED)	9.56 (acres)	Restrooms Group Picnic Shelters Picnic Tables Barbecues Splash Pad Fitness Zone Outdoor Stage Vending Machine Drinking Fountain Art / Monuments	2-5 years 5-12 years 2-12 years	Softball Field Multipurpose Field Soccer Field Football Field Basketball Court Tennis Court Volleyball Court Skate Park Walking Paths or Trails	Swimming Pool Community Building Senior Center Offices Gymnasium Multi-purpose Room Computer Lab Security Lighting Parking

# Chester Washington Golf Course



# Park Access



**Open Space**

- Parks Included in Analysis (includes parks within 1/2 mile of Community Boundary)
- Other Open Space (historical parks, golf courses, cemeteries, etc.)

**Park Access**

- Areas Within 1/2 Mile (10 minute walk) of a Park
- Non-Residential Areas Not Within 1/2 Mile (10 minute walk) of a Park
- Residential Areas Not Within 1/2 Mile (10 minute walk) of a Park



# Transportation and Safety

**Pedestrian and Bicycle Collisions**

- High Concentration (67)
- Low Concentration (1)
- Collisions involving Pedestrians
- Collisions involving Bikes
- 37 Concentration of Collisions within 500 feet

**Open Space and School**

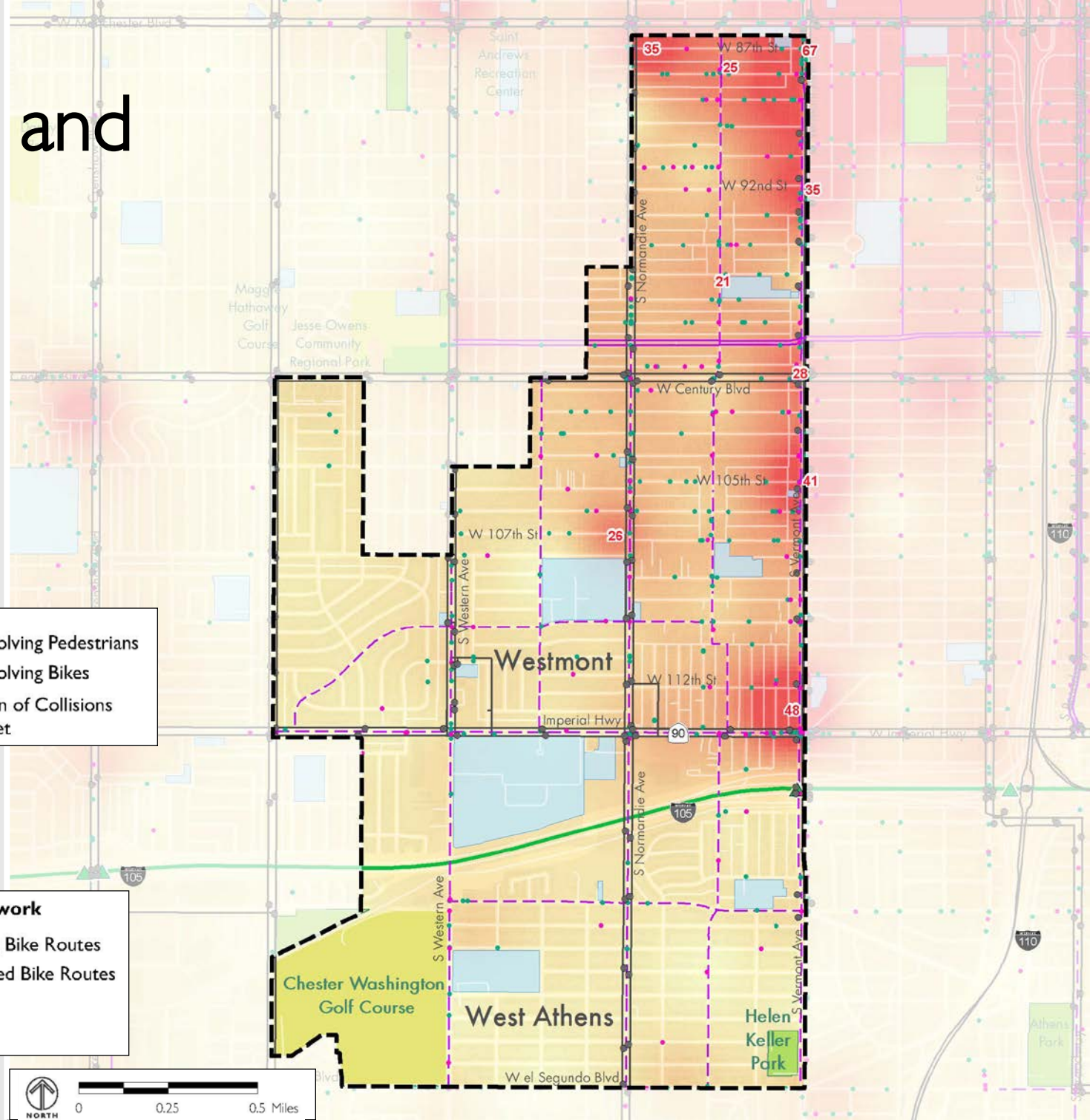
- County Parks
- Other Open Space
- Schools

**Public Transit Network**

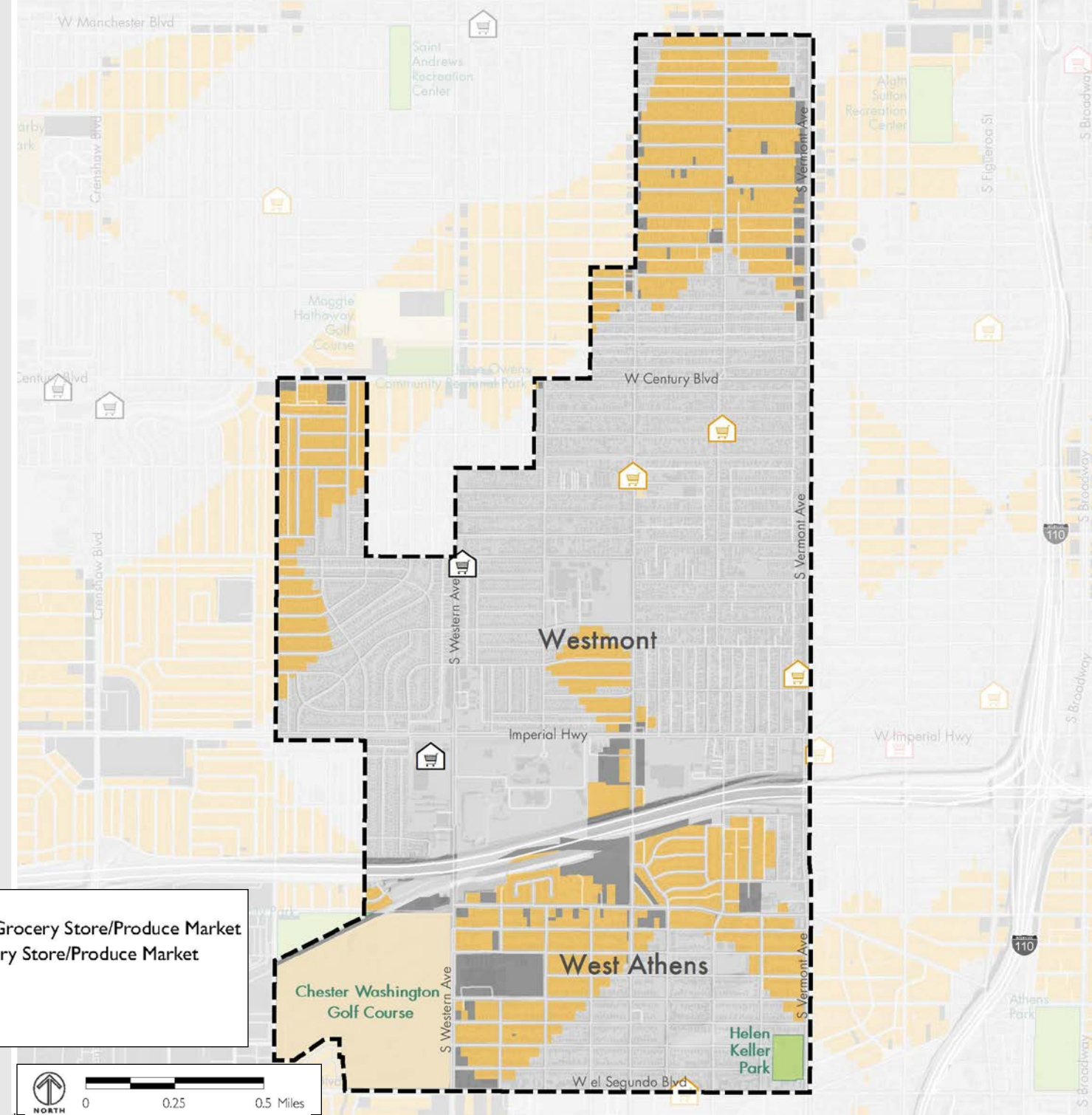
- Metro Rail Green Line Station
- Metro Rail Green Line
- Bus Stops
- Bus Routes

**Bicycle Network**

- Existing Bike Routes
- Proposed Bike Routes





# Food Access





**Supermarkets**

-  Full Service Grocery Store
-  Neighborhood Market
-  Specialty Market

**Healthy Food Access**

-  Non-Residential Areas Not Within 1/2 Mile of a Grocery Store/Produce Market
-  Residential Areas Not Within 1/2 Mile of a Grocery Store/Produce Market

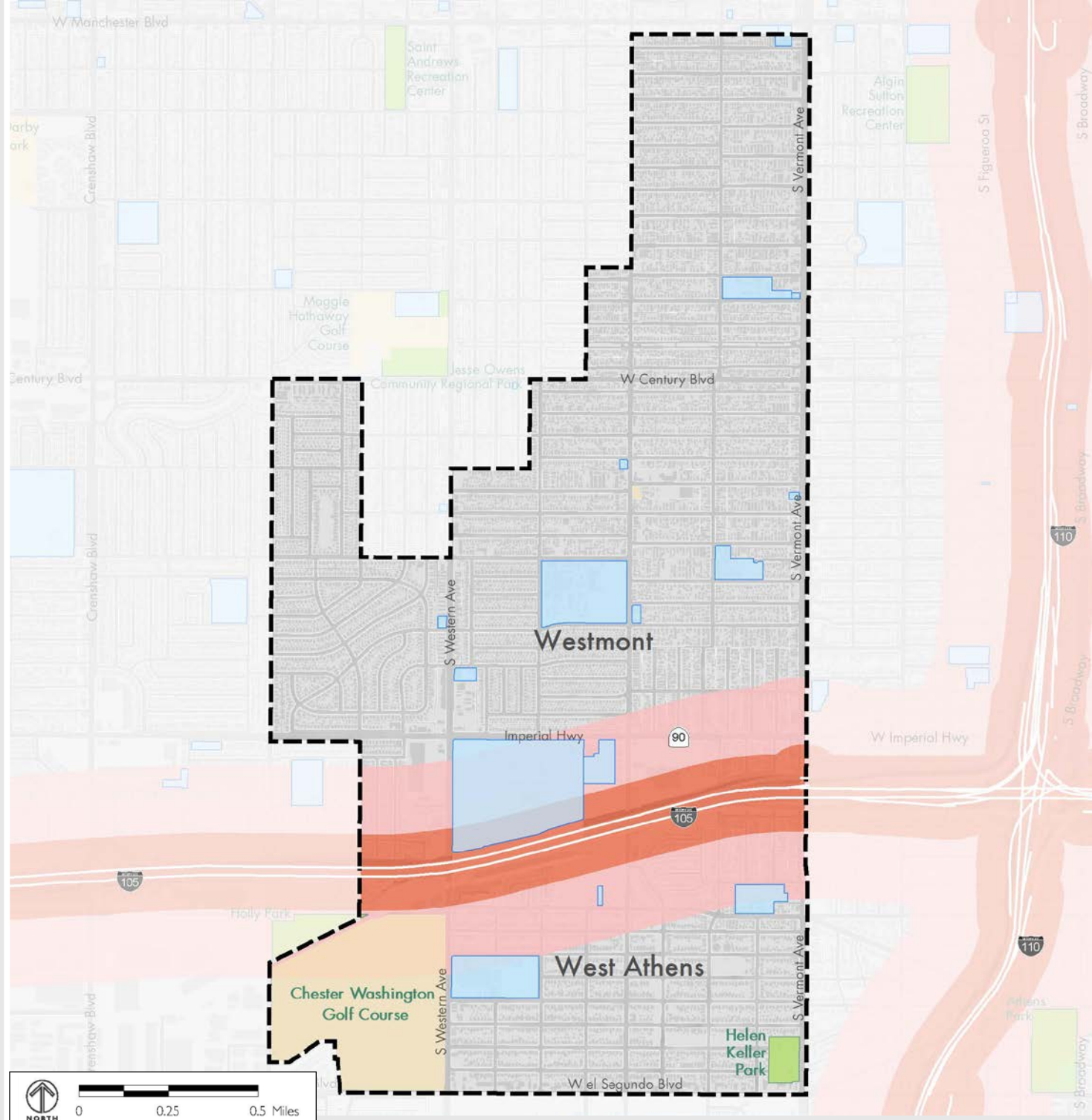
**Open Space**

-  County Parks
-  Other Open Space





# Air Quality Buffers Around Freeways



WEST ATHENS - WESTMONT

COMMUNITY PARKS AND RECREATION PLAN

# Crime

**Open Space and School**

- County Parks
- Other Open Space

**Crime Intensity**

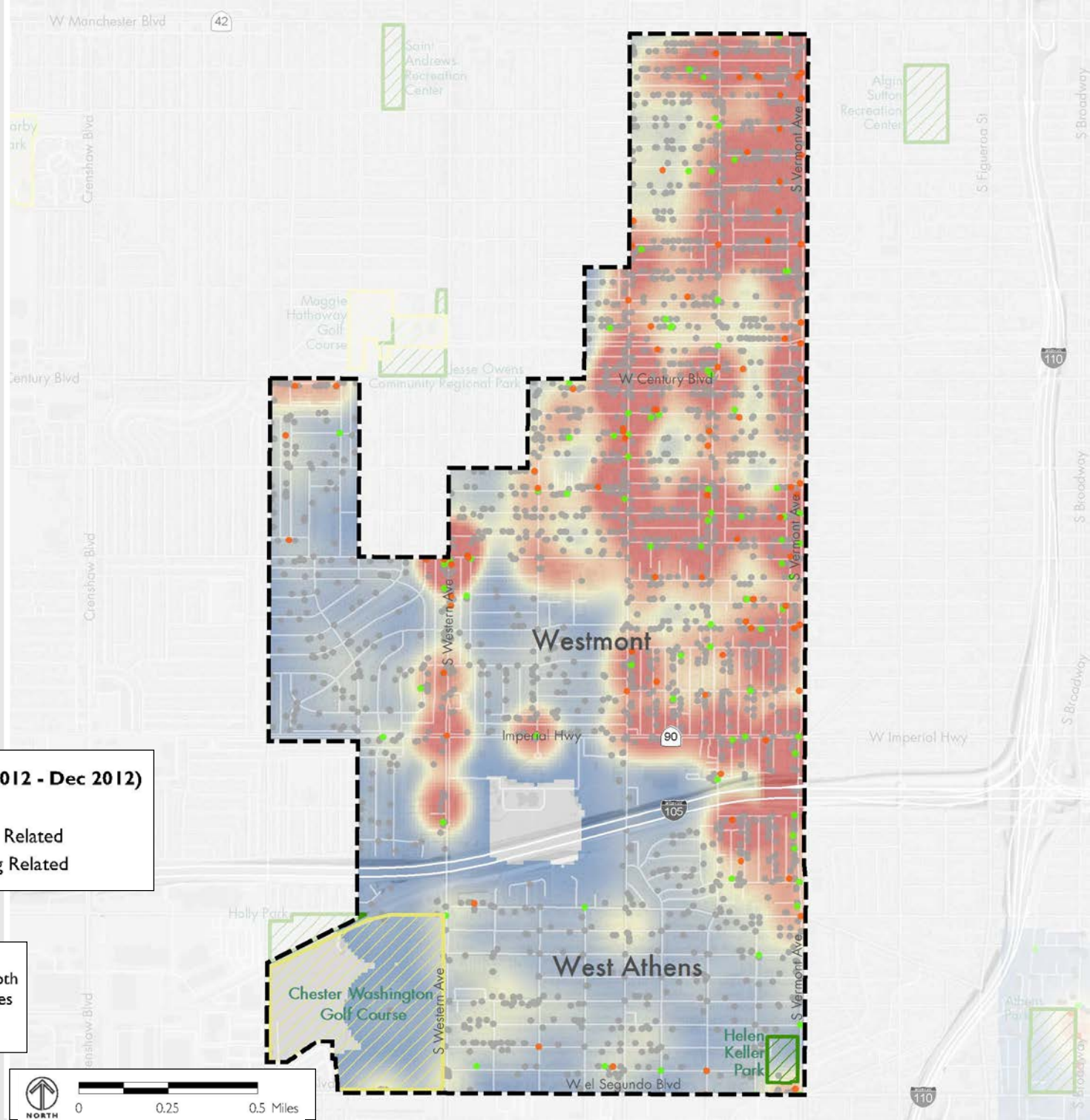
High

Low

**Crime Locations (Jan 2012 - Dec 2012)**

- All Other Crimes
- Part I Crimes - Gang Related
- Part II Crimes - Gang Related

Note: Hot Spot Z score values were derived by analyzing both point clustering and weighting of each crime. Weighting values used for each crime can be found in table X.X.





Questions?

# Small Group Exercise



WEST ATHENS - WESTMONT

COMMUNITY PARKS AND RECREATION PLAN



# Tasks and Schedule

Existing Conditions	Complete
Community Outreach	April – December 2013
Project Selection	January – February 2014
Project Planning / Design	February 2014 – April 2014
Draft Plan Preparation	May 2014 – September 2014
Final Plan Preparation	December 2014 – February 2015

# Next Steps

- Community Design Workshop: Spring 2014
- Community Fair: Spring 2014

# Contacts

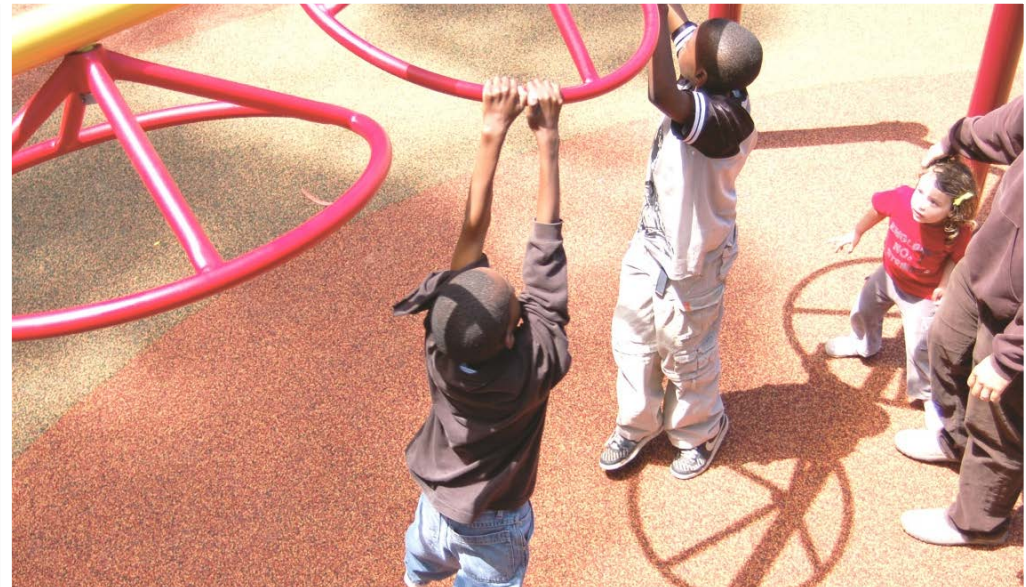
- Clement Lau, LA County Department of Parks and Recreation  
Phone: (213) 351-5120      Email: [clau@parks.lacounty.gov](mailto:clau@parks.lacounty.gov)
- Alina Bokde, Los Angeles Neighborhood Land Trust  
Phone: 213-572-0191      Email: [abokde@lanlt.org](mailto:abokde@lanlt.org)





# Nature for Neighborhoods

Communities creating a GREENER vision



COMMUNITY PARKS AND RECREATION PLAN

WEST ATHENS - WESTMONT