



Nature for Neighborhoods

Communities creating a GREENER vision



Community Parks and Recreation Plans

- Competitive grant award from the Strategic Growth Council (SGC) to DPR for \$1,000,000 to prepare Six Community Parks and Recreation Plans
- Parks and recreation plans for six unincorporated communities:
 - Walnut Park
 - East Los Angeles
 - East Rancho Dominguez
 - Lennox
 - Willowbrook
 - West Athens - Westmont

Grant Objectives

- Create parks and green space
- Improve infrastructure
- Improve air and water quality
- Protect natural resources
- Promote water conservation and energy efficiency
- Help the economy



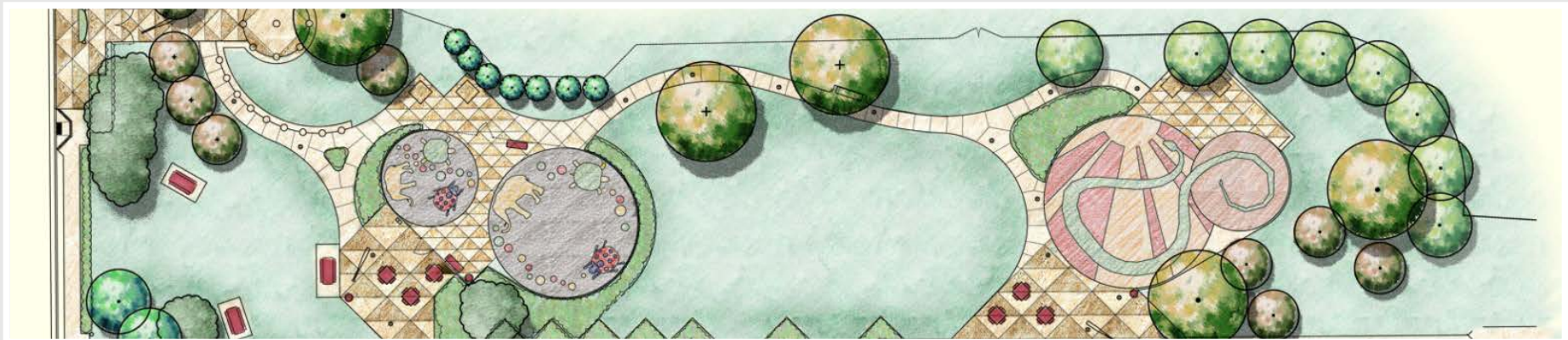
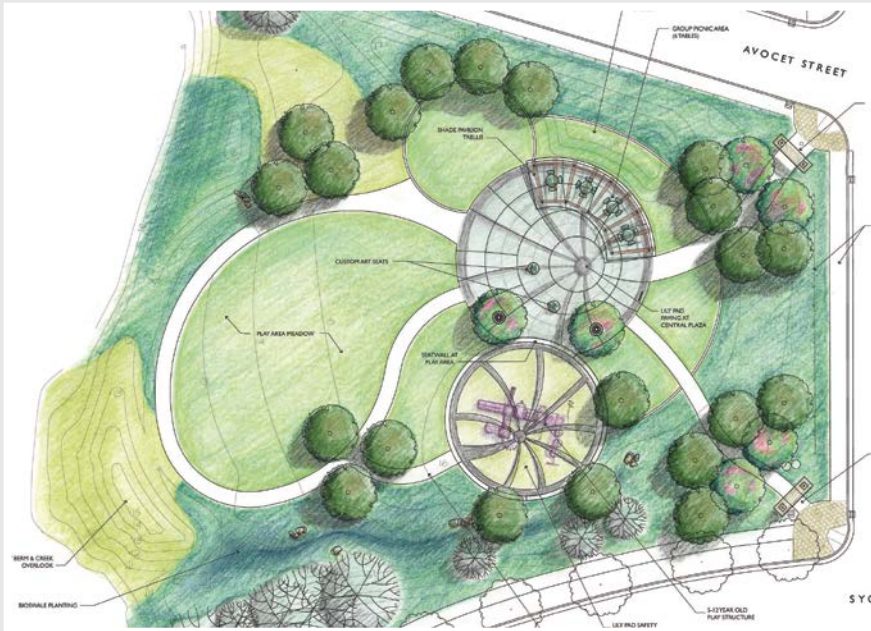
Outcomes

- Park Design Concept Plans
- Land and Funding Opportunities identified
- Joint Use Opportunities and Strategies



Outcomes

- Community Park and Recreation Plans developed through a comprehensive community input process



WALNUT PARK

COMMUNITY PARKS AND RECREATION PLAN

Outcomes

- Established Relationships with Community Members and Partner Agencies



Project Team

Los Angeles County Department of Parks and Recreation

- Jim Smith, Chief of Development
- Kathy King, Chief of Planning
- Clement Lau, Project Manager/Facilities Planner

Consultant Team

- Melissa Erikson, Senior Associate, The Planning Center | DC&E
- Alina Bokde, Executive Director, Los Angeles Neighborhood Land Trust
- Stephano Medina, Community Organizer, Los Angeles Neighborhood Land Trust

The Planning Center | DC&E

Creating Healthy Outdoor Environments



WALNUT PARK

COMMUNITY PARKS AND RECREATION PLAN

Outreach and Community Involvement

- The Los Angeles Neighborhood Land Trust



Community Engagement Strategy

- Stakeholder Meetings
- Community Surveys
- Focus Groups
- Community Input Workshops
- Tabling
- Tours
- Community Outreach Fair
- Youth Engagement Activities

Key Themes from Outreach Efforts

■ WALNUT NATURE PARK

■ Issues

- Hours of operation are unclear and extremely limited
- Playfield is undeveloped

■ Recommendations

- Improve lighting
- More social space
- More events

■ LOCAL CONCERNS

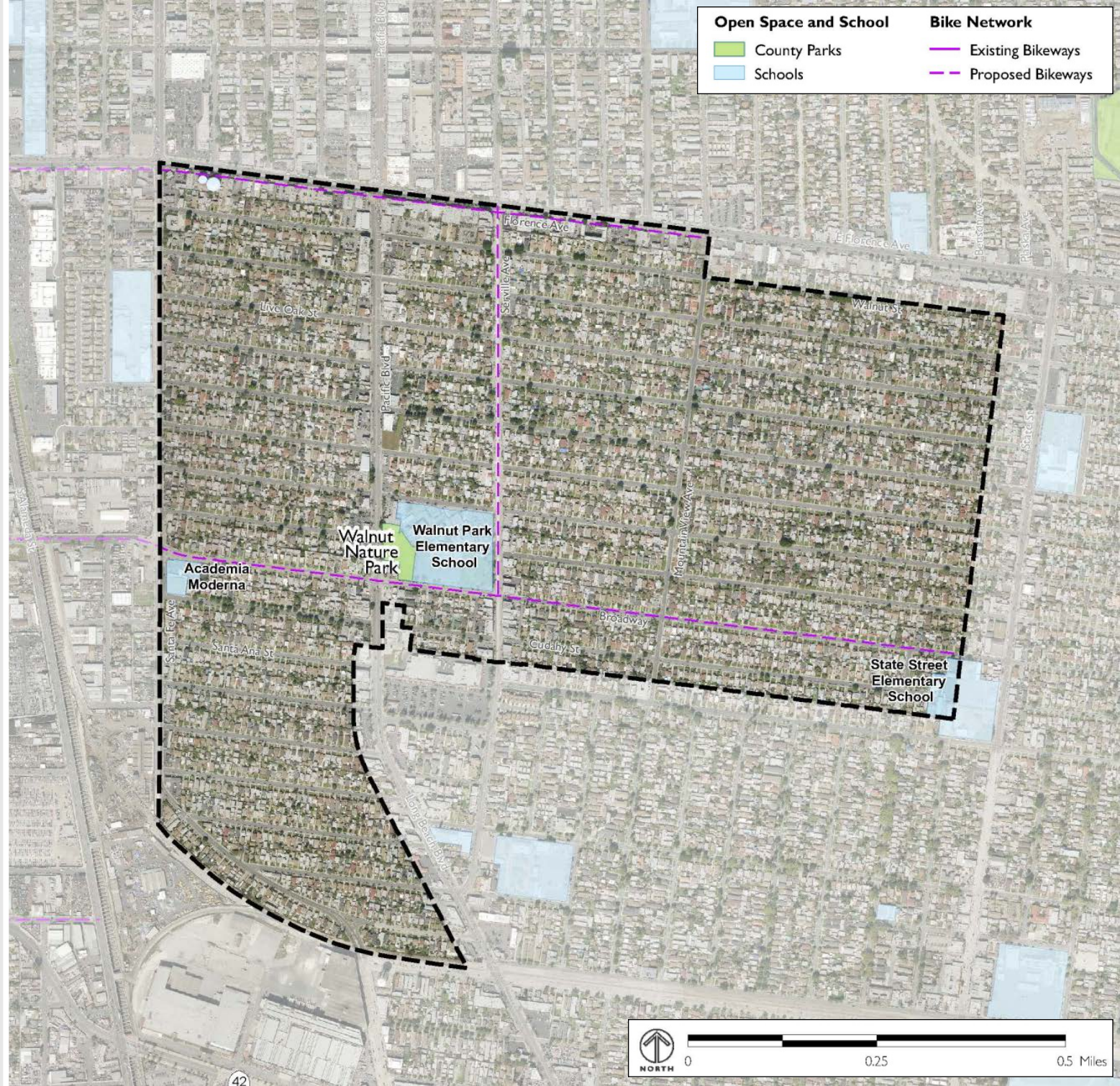
- Prostitution along Pacific Blvd.
- Illegal garage conversion and illegal car sales along Pacific Blvd.
- Speeding on weekends

■ NEW GREEN SPACE

- Social gathering spaces
- Playgrounds



Existing Parks and Schools



WALNUT PARK

COMMUNITY PARKS AND RECREATION PLAN

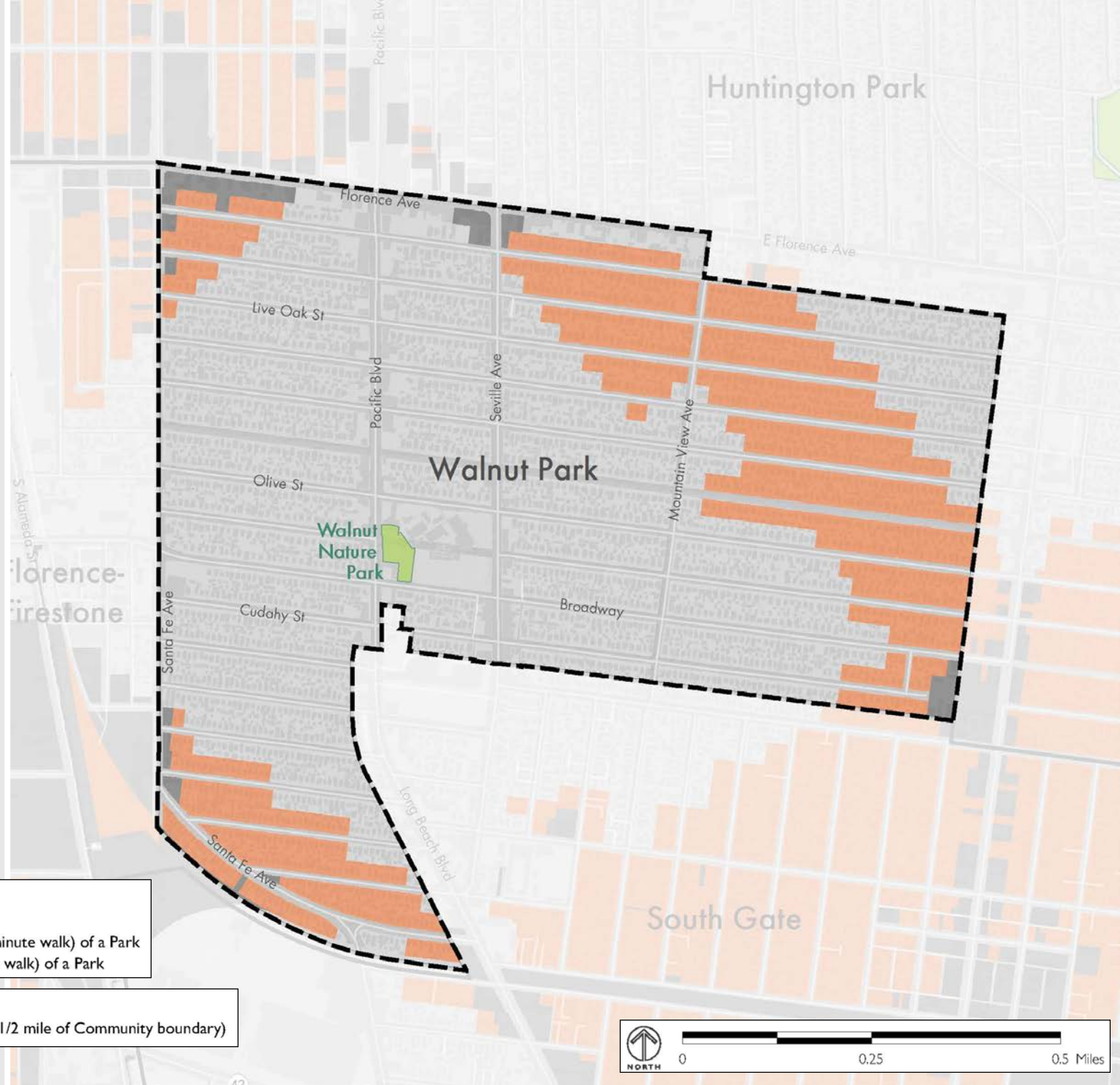
Walnut Nature Park

Size	Park Amenities	Play	Recreation Amenities	Buildings
------	----------------	------	----------------------	-----------

Walnut Nature Park	(acres)	Restrooms	Group Picnic Shelters	Picnic Tables	Barbecues	Splash Pad	Fitness Zone	Outdoor Stage	Vending Machine	Drinking Fountain	Art / Monuments	2-5 years	5-12 years	2-12 years	Softball Field	Multipurpose Field	Soccer Field	Football Field	Basketball Court	Tennis Court	Volleyball Court	Skate Park	Walking Paths or Trails	Swimming Pool	Community Building	Senior Center	Offices	Gymnasium	Multi-purpose Room	Computer Lab	Security Lighting	Parking	
	4.50																																



Park Access



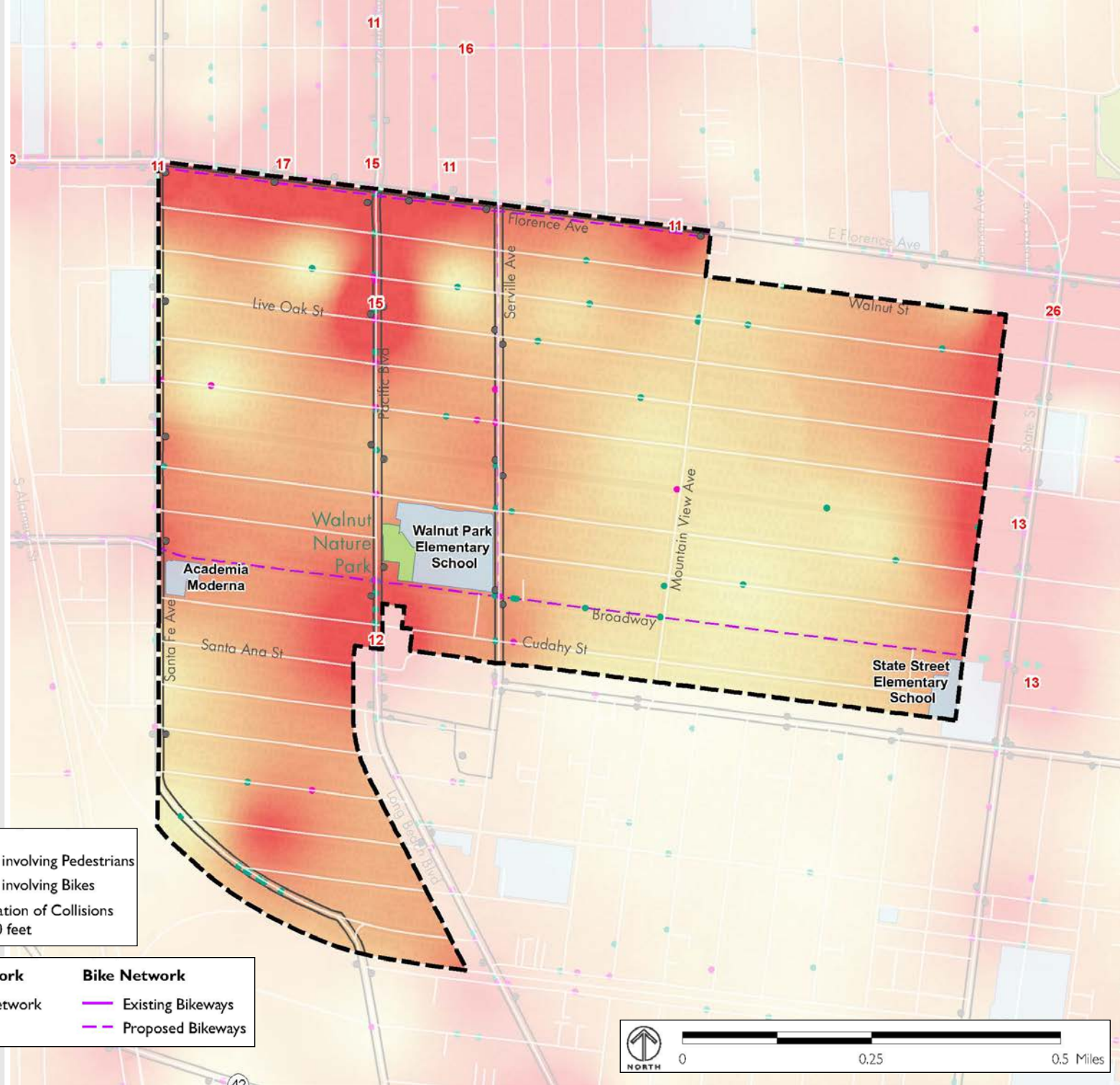
Park Access

- Areas Within 1/2 Mile (10 minute walk) of a Park
- Non-Residential Areas Not Within 1/2 Mile (10 minute walk) of a Park
- Residential Areas Not Within 1/2 Mile (10 minute walk) of a Park

Open Space

- Parks Included in Analysis (includes parks within 1/2 mile of Community boundary)

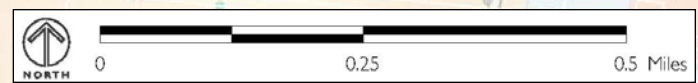
Transit and Safety



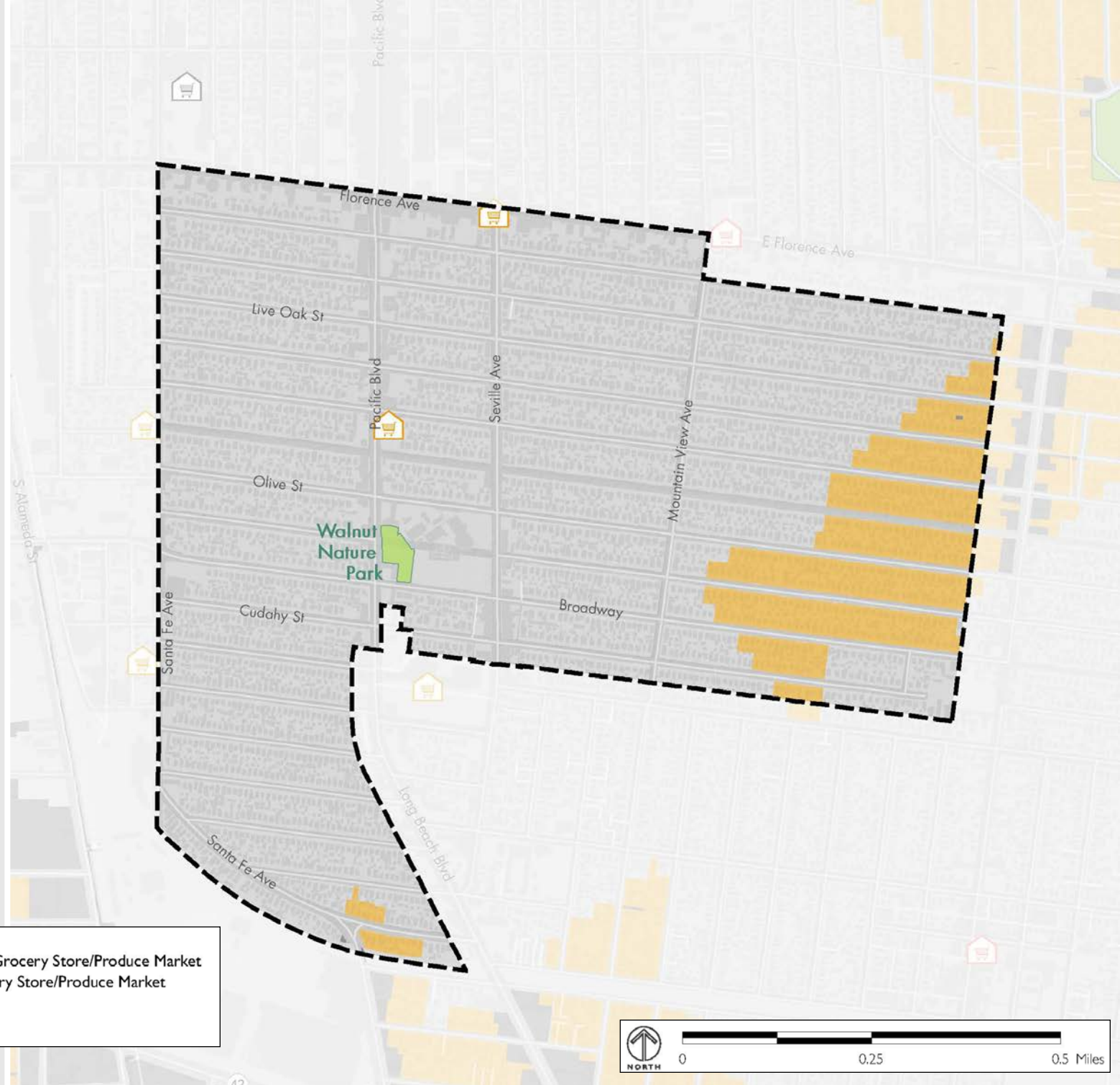
Pedestrian and Bicycle Collisions

- High Concentration (38)
- Low Concentration (1)
- Collisions involving Pedestrians
- Collisions involving Bikes
- 37 Concentration of Collisions within 250 feet

<p>Open Space and School</p> <ul style="list-style-type: none"> County Parks Schools 	<p>Public Transit Network</p> <ul style="list-style-type: none"> Public Transit Network Bus Routes 	<p>Bike Network</p> <ul style="list-style-type: none"> Existing Bikeways Proposed Bikeways
---	--	--



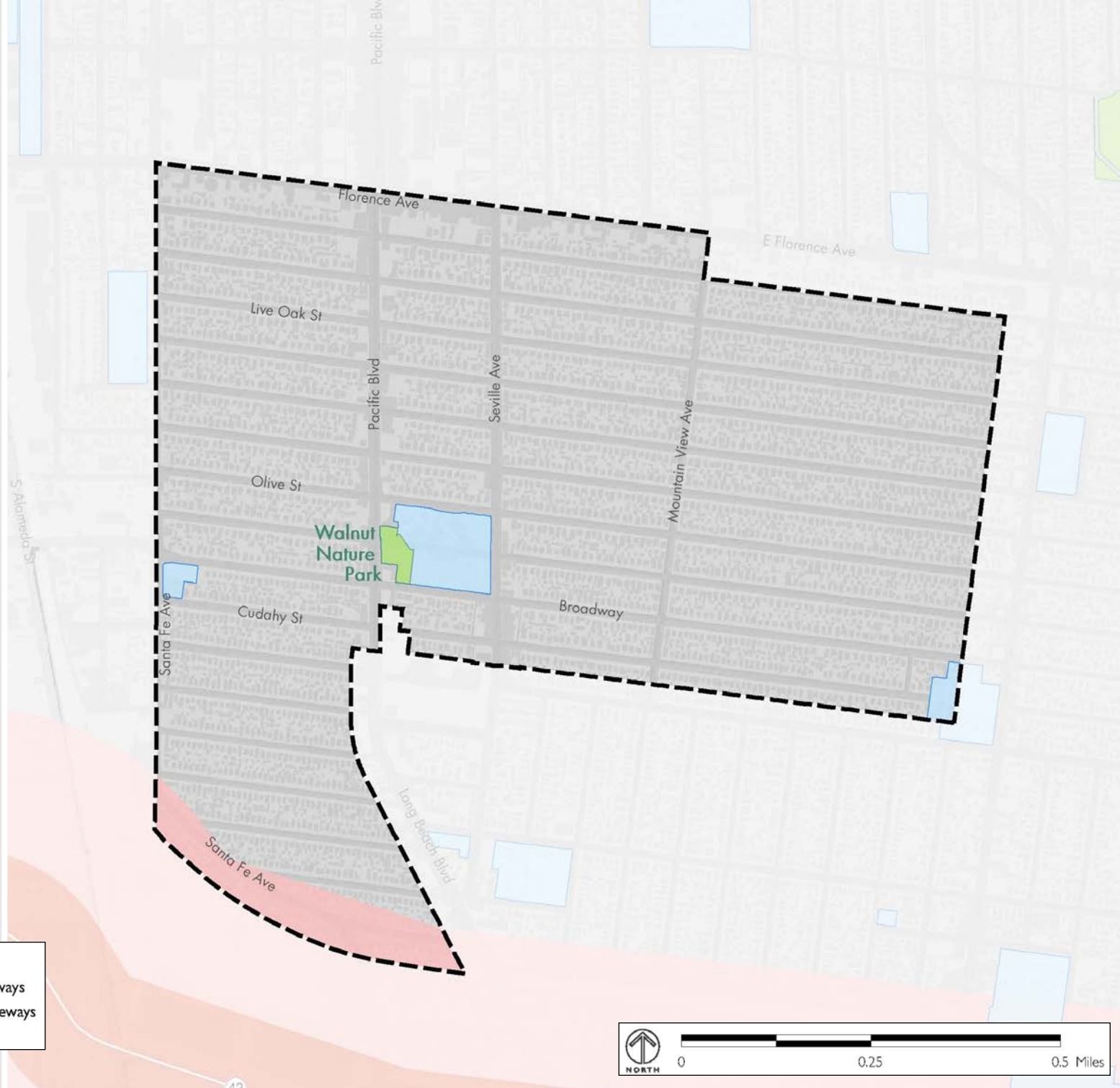
Food Access



- Supermarkets**
- Full Service Grocery Store
 - Neighborhood Market
 - Specialty Market

- Healthy Food Access**
- Non-Residential Areas Not Within 1/2 Mile of a Grocery Store/Produce Market
 - Residential Areas Not Within 1/2 Mile of a Grocery Store/Produce Market
- Open Space**
- County Parks

Air Quality Buffers Around Freeways

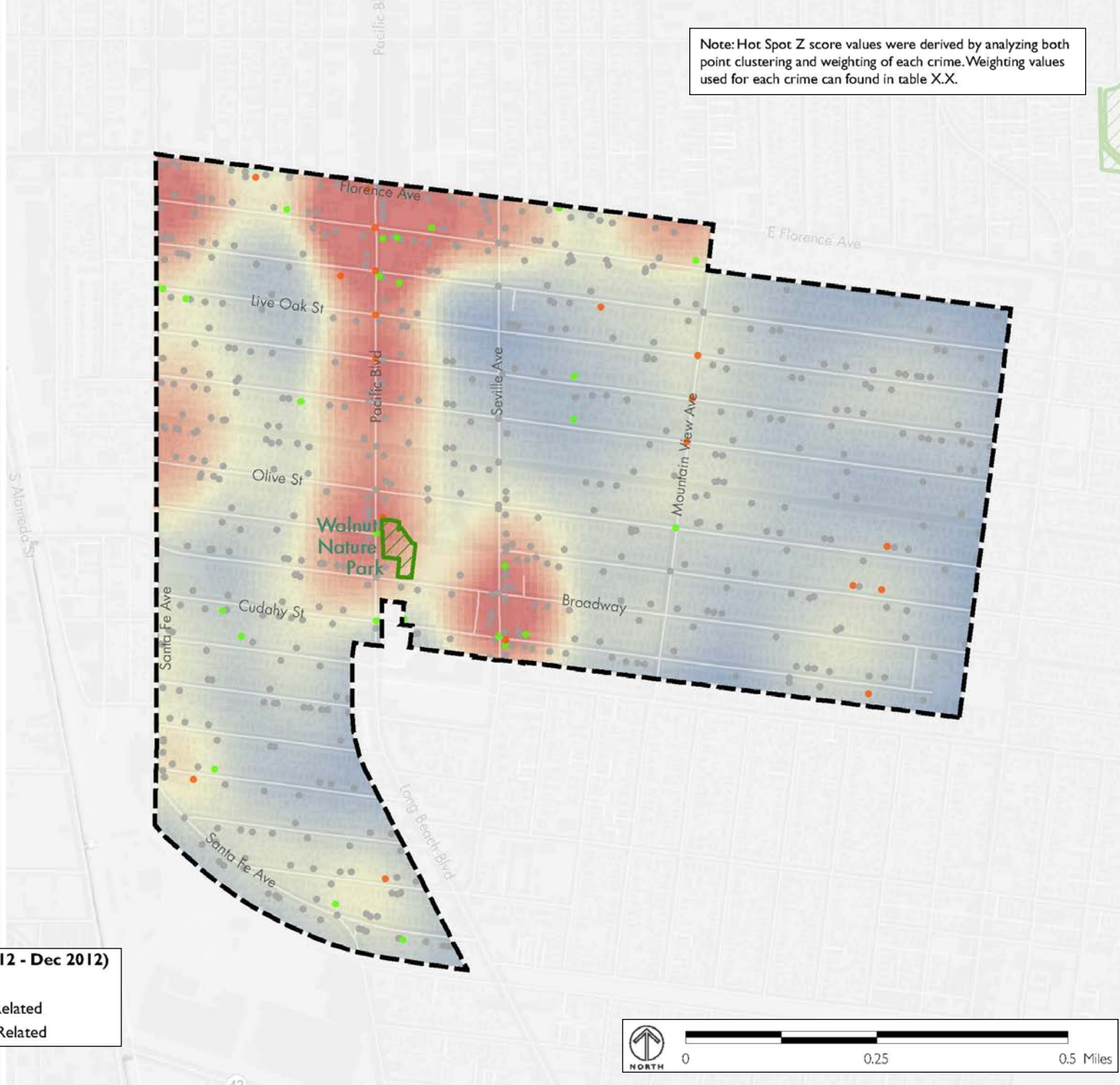


WALNUT PARK

COMMUNITY PARKS AND RECREATION PLAN

Crime

Note: Hot Spot Z score values were derived by analyzing both point clustering and weighting of each crime. Weighting values used for each crime can be found in table X.X.

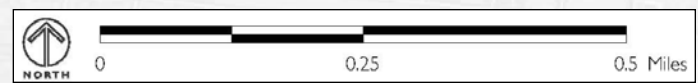


Open Space and School
 County Parks

Crime Intensity
 High
 Low

Crime Locations (Jan 2012 - Dec 2012)

- All Other Crimes
- Part I Crimes - Gang Related
- Part II Crimes - Gang Related



Questions?

Small Group Exercise



Tasks and Schedule

Existing Conditions	Complete
Community Outreach	April – December 2013
Project Selection	January – February 2014
Project Planning / Design	February 2014 – April 2014
Draft Plan Preparation	May 2014 – September 2014
Final Plan Preparation	December 2014 – February 2015

Next Steps

- Community Design Workshop: Spring 2014
- Community Fair: Summer 2014

Contacts

- Clement Lau, LA County Department of Parks and Recreation
Phone: (213) 351-5120 Email: clau@parks.lacounty.gov
- Alina Bokde, Los Angeles Neighborhood Land Trust
Phone: 213-572-0191 Email: abokde@lanlt.org



Nature for Neighborhoods

Communities creating a GREENER vision

