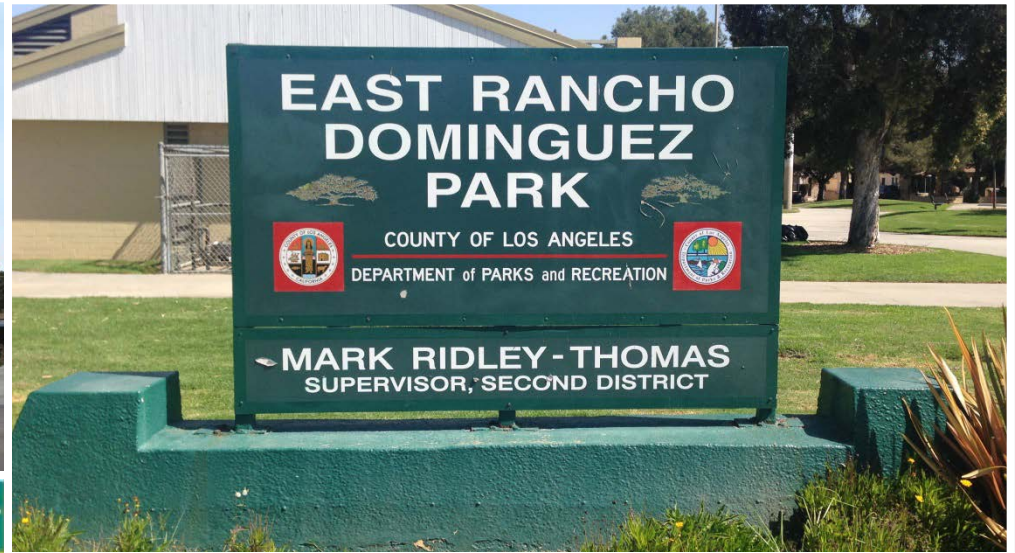




# Nature for Neighborhoods

Communities creating a GREENER vision



COMMUNITY PARKS AND RECREATION PLAN

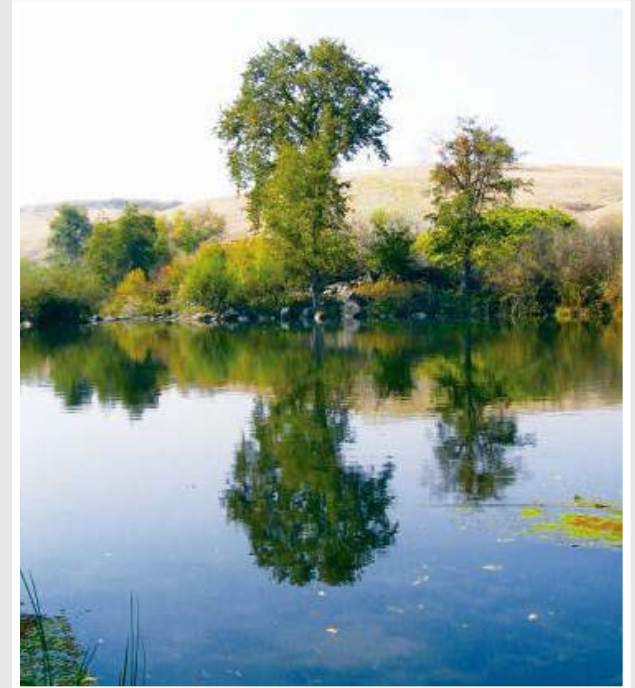
EAST RANCHO DOMINGUEZ

# Community Parks and Recreation Plans

- Competitive grant award from the Strategic Growth Council (SGC) to DPR for \$1,000,000 to prepare Six Community Parks and Recreation Plans
  
- Parks and recreation plans for six unincorporated communities:
  - East Los Angeles
  - East Rancho Dominguez
  - Lennox
  - Walnut Park
  - Willowbrook
  - West Athens - Westmont

# Grant Objectives

- Create parks and green space
- Improve infrastructure
- Improve air and water quality
- Protect natural resources
- Promote water conservation and energy efficiency
- Help the economy



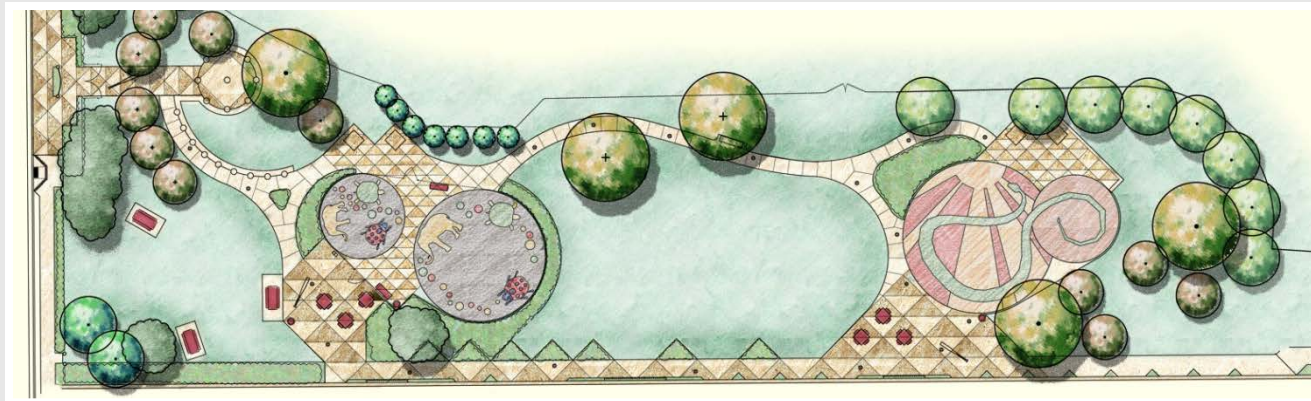
# Outcomes

- Park Design Concept Plans
- Land and Funding Opportunities identified
- Joint Use Opportunities and Strategies



# Outcomes

- Community Park and Recreation Plans developed through a comprehensive community input process



EAST RANCHO DOMINGUEZ

COMMUNITY PARKS AND RECREATION PLAN

# Outcomes

- Established Relationships with Community Members and Partner Agencies



# Project Team

## Los Angeles County Department of Parks and Recreation

- Jim Smith, Chief of Development
- Kathy King, Chief of Planning
- Clement Lau, Project Manager/Facilities Planner

## Consultant Team

- Sarah Sutton, Principal, The Planning Center | DC&E
- Alina Bokde, Executive Director, Los Angeles Neighborhood Land Trust

# The Planning Center | DC&E

## Creating Healthy Outdoor Environments





# Outreach and Community Involvement

- The Los Angeles Neighborhood Land Trust



# Community Engagement Strategy

- Stakeholder Meetings
- Community Surveys
- Focus Groups
- Community Input Workshops
- Tabling
- Tours
- Community Outreach Fair
- Youth Engagement Activities



# Key Themes from Outreach Efforts

## ■ PARK AMENITIES

- Exercise equipment
- Garden Project
- Soccer Field
- Walking Paths

## ■ PROGRAMS

- Fitness/exercise Programs
- Youth Programs
- Senior Programs

## ■ SAFETY

- More sheriff patrol
- Improve lighting and security

## ■ PARTICIPATION

- More opportunities to engage community input

## ■ MAINTENANCE

- Commitment to continued park maintenance and improvements



# Additional Community Engagement

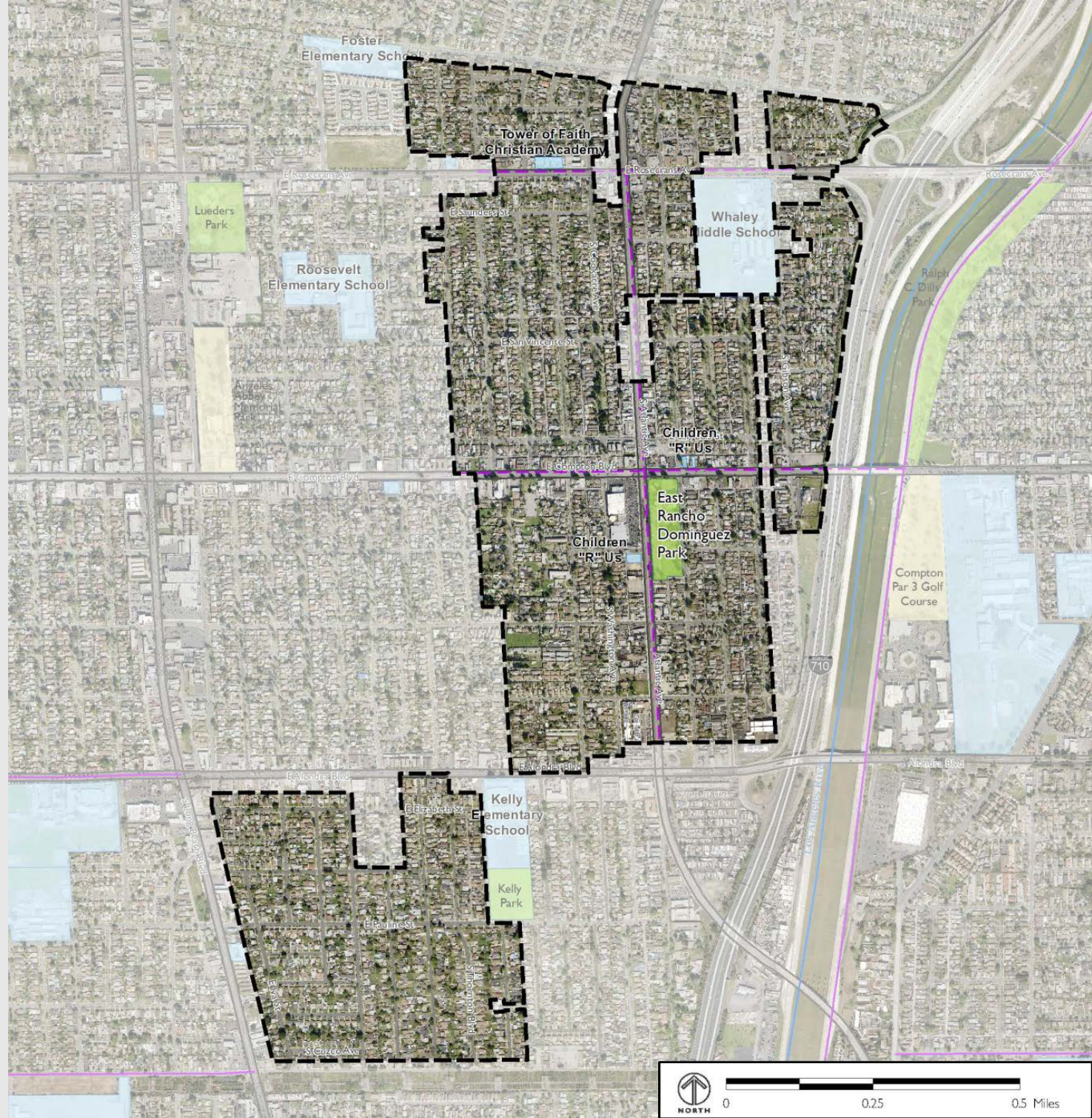
## Safe Parks Healthy Communities Initiative



- Address safety issues in and around parks in :
  - East Los Angeles
  - East Rancho Dominguez
  - Willowbrook
  
- Additional community outreach via:
  - Community Meetings
  - Focus Groups
  - Volunteer Events

*Made possible with funding from the Centers for Disease Control and Prevention through the Los Angeles County Department of Public Health*

# Existing Parks and Schools



Open Space and School		Bicycle Network	
County Parks	Other Open Space	Existing Bike Routes	Proposed Bike Routes
Schools			

# East Rancho Dominguez Park

Size	Park Amenities									Play			Recreation Amenities						Buildings/Structures												
(acres)	Restrooms	Group Picnic Shelters	Picnic Tables	Barbecues	Splash Pad	Fitness Zone	Outdoor Stage	Vending Machine	Drinking Fountain	Art / Monuments	2-5 years	5-12 years	2-12 years	Softball Field	Multipurpose Field	Soccer Field	Football Field	Basketball Court	Tennis Court	Volleyball Court	Skate Park	Walking Paths or Trails	Swimming Pool	Community Building	Senior Center	Offices	Gymnasium	Multi-purpose Room	Computer Lab	Security Lighting	Parking
5.51																															



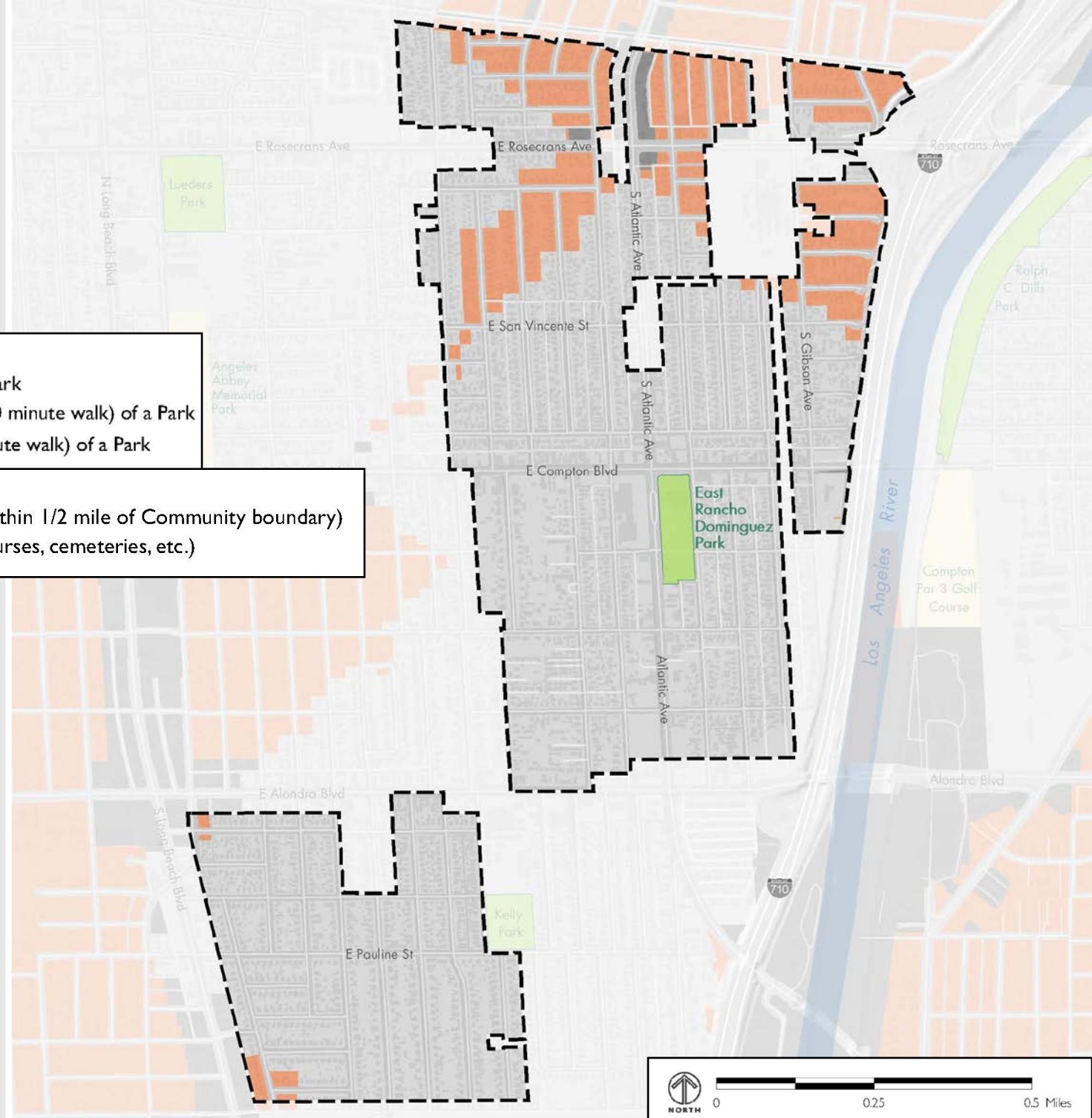
# Park Access

## Park Access

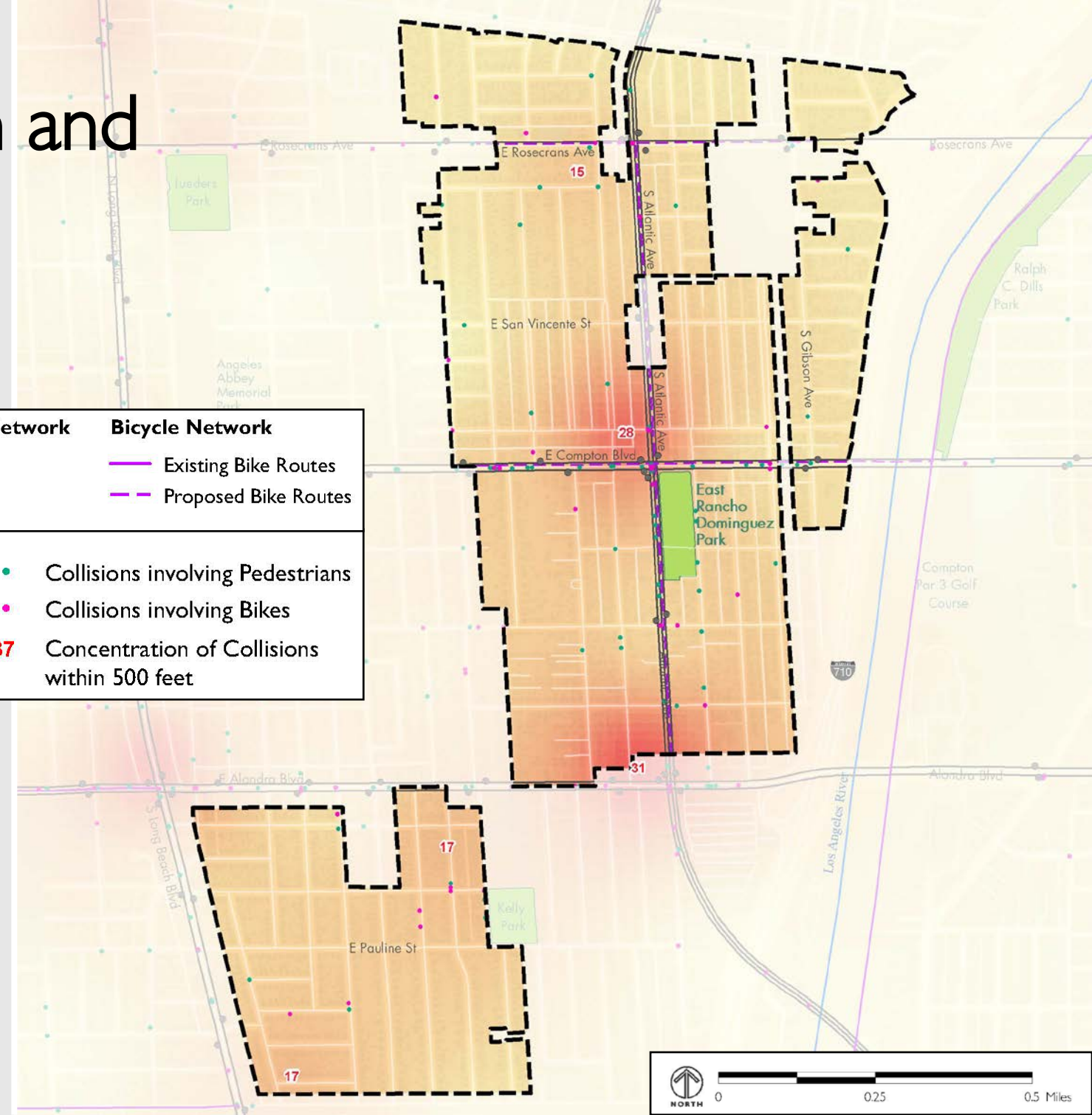
- Areas Within 1/2 Mile (10 minute walk) of a Park
- Non-Residential Areas Not Within 1/2 Mile (10 minute walk) of a Park
- Residential Areas Not Within 1/2 Mile (10 minute walk) of a Park

## Parklands

- Parks Included in Analysis (includes parks within 1/2 mile of Community boundary)
- Other Open Space (historical parks, golf courses, cemeteries, etc.)



# Transportation and Safety



Open Space and School	Public Transit Network	Bicycle Network
<ul style="list-style-type: none"> <li>County Parks</li> <li>Other Open Space</li> </ul>	<ul style="list-style-type: none"> <li>Bus Stops</li> <li>Bus Routes</li> </ul>	<ul style="list-style-type: none"> <li>Existing Bike Routes</li> <li>Proposed Bike Routes</li> </ul>
Pedestrian and Bicycle Collisions		
<ul style="list-style-type: none"> <li>High Concentration (67)</li> <li>Low Concentration (1)</li> </ul>		<ul style="list-style-type: none"> <li>Collisions involving Pedestrians</li> <li>Collisions involving Bikes</li> <li>37 Concentration of Collisions within 500 feet</li> </ul>



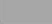



# Food Access

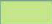

**Supermarkets**

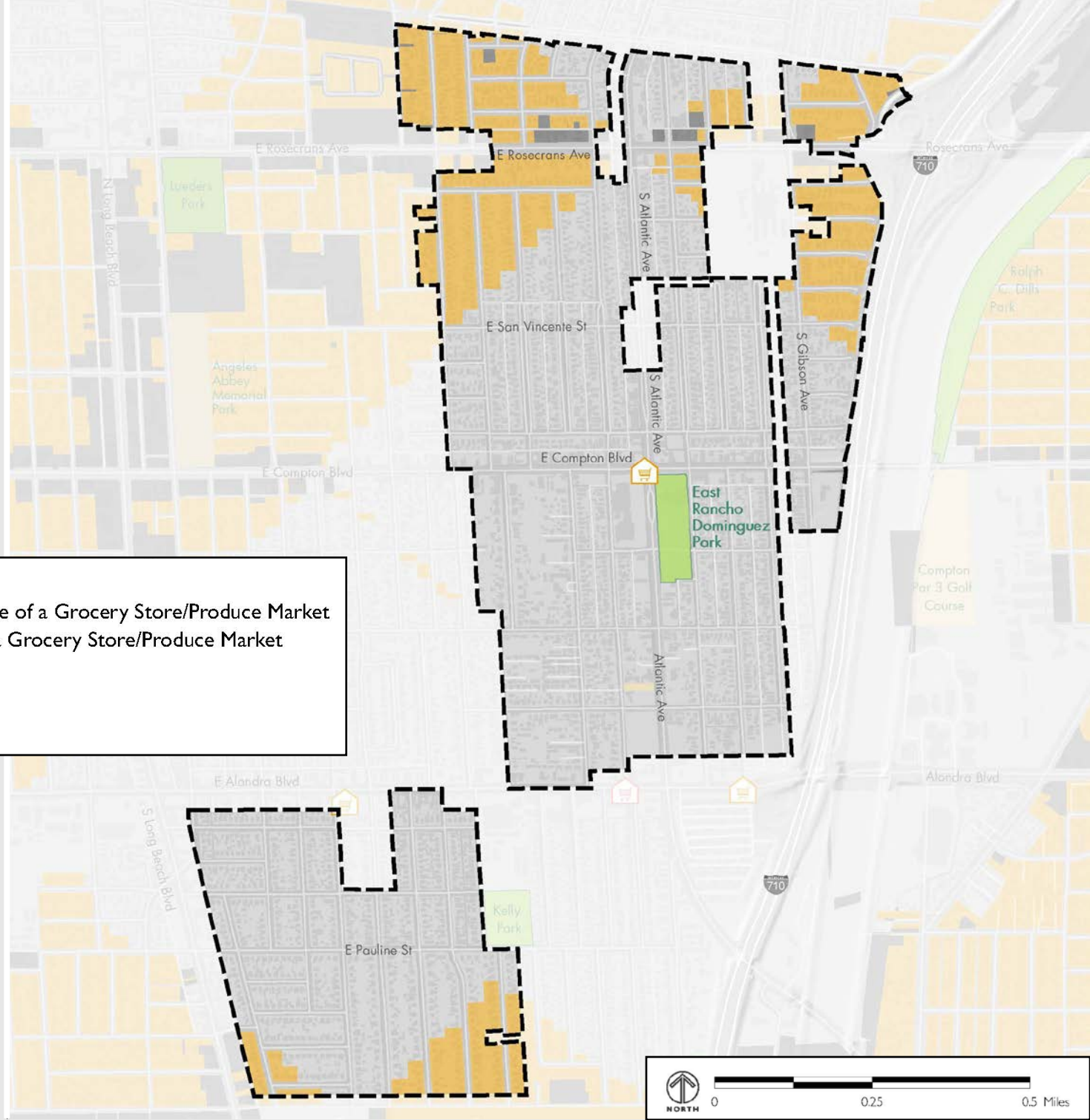
-  Neighborhood Market
-  Specialty Market

**Healthy Food Access**

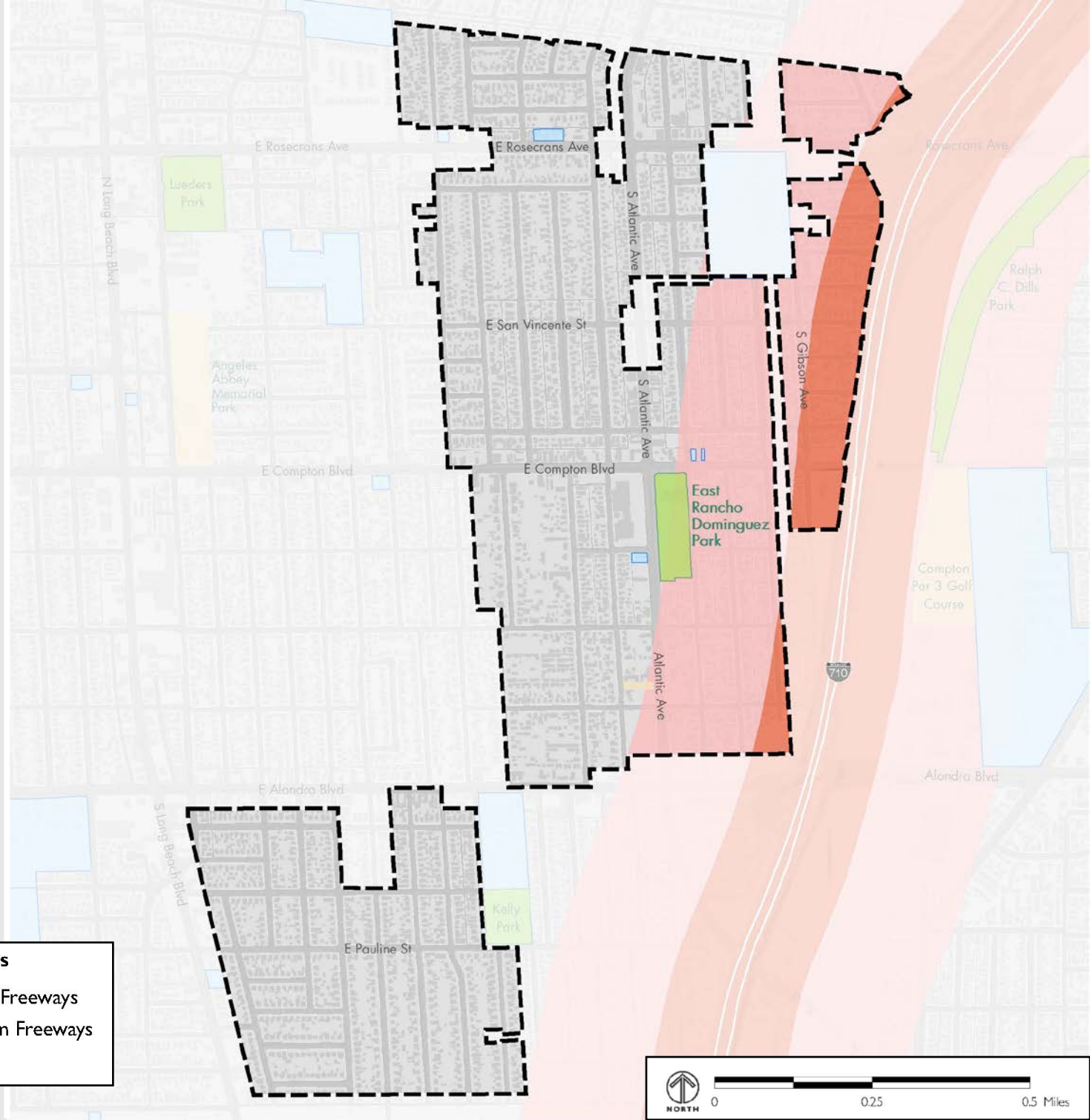
-  Non-Residential Areas Not Within 1/2 Mile of a Grocery Store/Produce Market
-  Residential Areas Not Within 1/2 Mile of a Grocery Store/Produce Market

**Open Space**

-  County Parks
-  Other Open Space



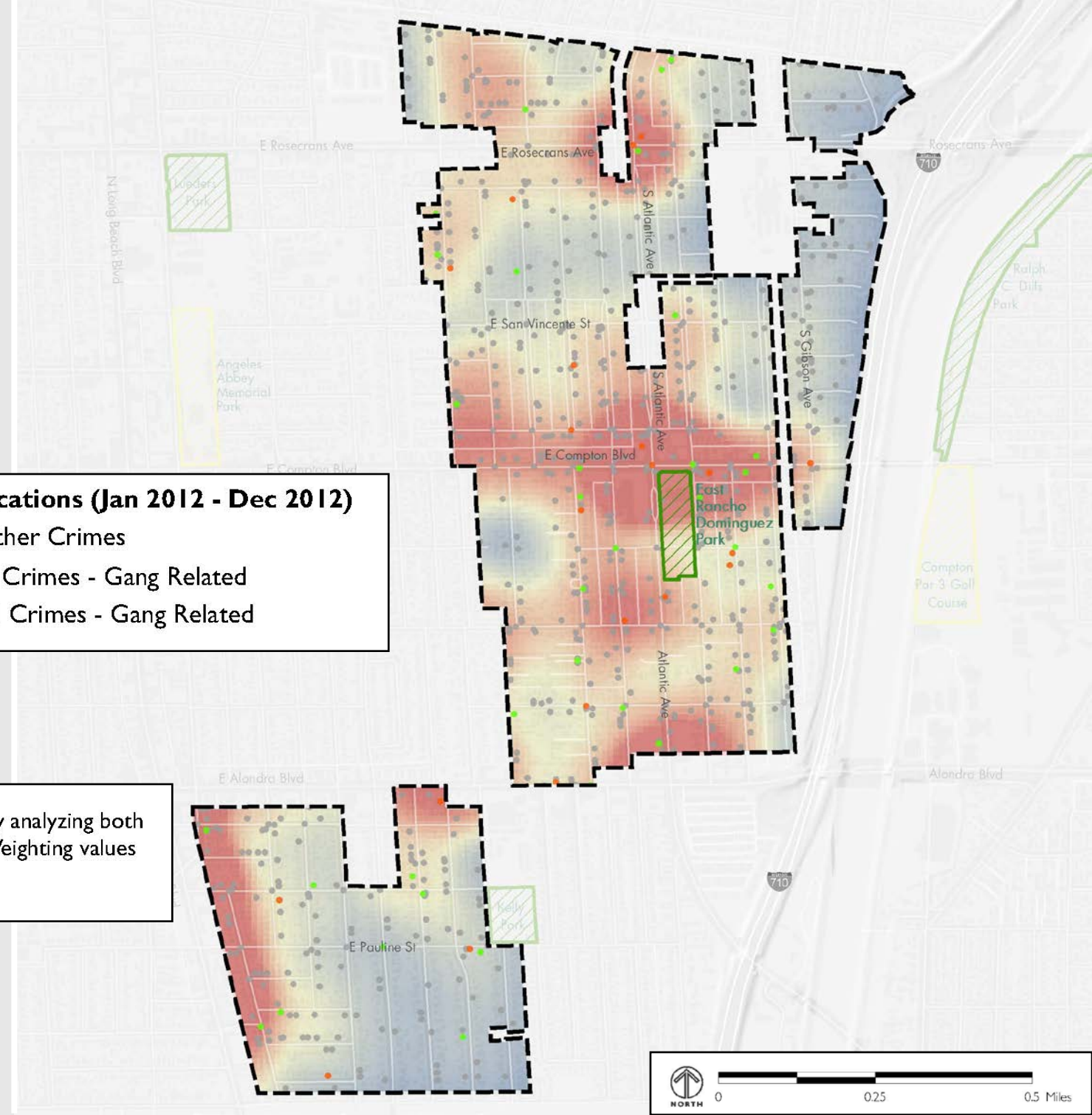
# Air Quality Buffers Around Freeways



Open Space	Air Quality Buffers
County Parks	500 feet from Freeways
Other Open Space	1,500 feet from Freeways
Schools	



# Crime



**Crime Intensity**

High

Low

**Crime Locations (Jan 2012 - Dec 2012)**

- All Other Crimes
- Part I Crimes - Gang Related
- Part II Crimes - Gang Related

**Open Space and School**

- County Parks
- Other Open Space

Note: Hot Spot Z score values were derived by analyzing both point clustering and weighting of each crime. Weighting values used for each crime can be found in table X.X.

Questions?

# Small Group Exercise



EAST RANCHO DOMINGUEZ

COMMUNITY PARKS AND RECREATION PLAN

# Tasks and Schedule

Existing Conditions	January – October 2013
Community Outreach	April – October 2013
Project Selection	November – December 2013
Project Planning / Design	January 2014 – April 2014
Draft Plan Preparation	May 2014 – September 2014
Final Plan Preparation	December 2014 – February 2015

# Next Steps

- Community Design Workshop: Spring 2014
- Community Fair: Spring 2014

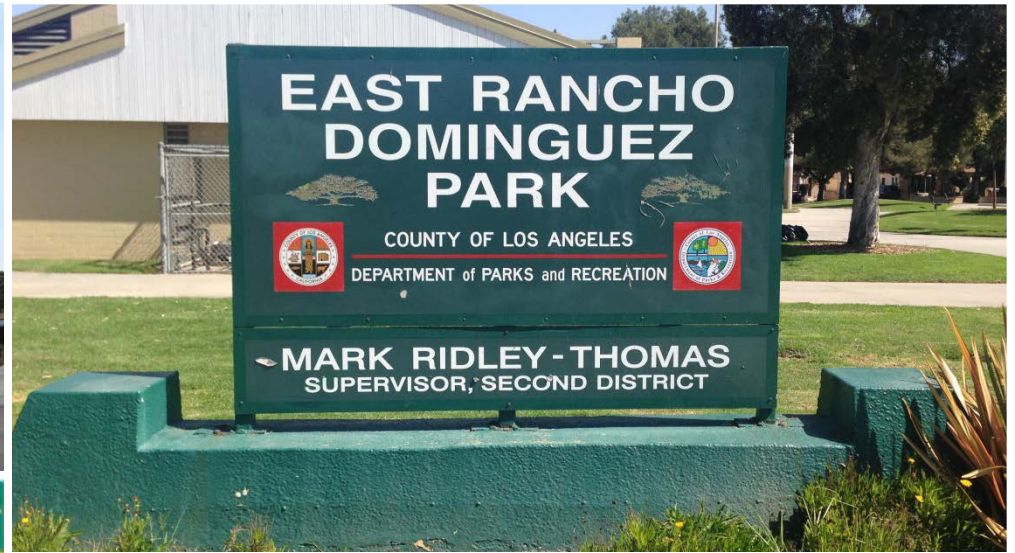
# Contacts

- Clement Lau, LA County Department of Parks and Recreation  
Phone: (213) 351-5120      Email: [clau@parks.lacounty.gov](mailto:clau@parks.lacounty.gov)
- Alina Bokde, Los Angeles Neighborhood Land Trust  
Phone: 213-572-0191      Email: [abokde@lanlt.org](mailto:abokde@lanlt.org)



# Nature for Neighborhoods

Communities creating a GREENER vision



COMMUNITY PARKS AND RECREATION PLAN

EAST RANCHO DOMINGUEZ