



LOS ANGELES COUNTY REGIONAL PARK AND OPEN SPACE DISTRICT

MEASURE  
**A**

# 2025 Competitive Grants Cycle

## \$58 Million!



### Measure A Funding Categories 3 & 4

Planning & Design

Natural Lands, Local Beaches, Water Conservation & Protection

Regional Recreation, Multi-use Trails & Accessibility

July 23, 2025







**Mark Glassock**  
Assistant District Administrator



**Agie Jordan**  
Grants Manager



**Misha Hughes**  
Grants Assistant Manager



Keep your microphone muted.



Hold your questions  
until the “Questions and Answer”  
portion of the session.





# Brief RPOSD and Measure A Overview

- RPOSD is a special district responsible for administering Measure A.
- Provides competitive and non-competitive funds to public agencies and non-profits.
- Funds are allocated and awarded as grants to:
  - Enhance and repair parks
  - Create new park land
  - Protect open spaces and beaches
  - Support recreational programs
- Full balances of each grant funding source can be found here: [grantfunding.rposd.lacounty.gov](https://grantfunding.rposd.lacounty.gov)



# Agenda

1. Welcome & Introductions
2. Guidelines Structure
3. What's New for 2025
4. Eligible Applicants
5. Submission Rules
6. Key Criteria
7. Award Limits
8. Planning & Design Program
9. Natural Lands, Local Beaches, Water Conservation & Protection
10. Regional Recreation, Multi-use Trails & Accessibility
11. Q&A



**PLANNING & DESIGN  
COMPETITIVE GRANT PROGRAM**

**Total Available Funding: \$18 million**

- Category 3: \$9 million
- Category 4: \$9 million

This new program supports **pre-construction** efforts that lead to shovel-ready development projects aligned with the goals of Categories 3 and 4.

**Minimum and Maximum Grant Request**

\$100,000 ————— \$500,000

**Required Match:**

None, although leverage of federal, state, park, conservation, water, or climate funding programs is strongly encouraged. This includes applicant use of existing Measure A funding.

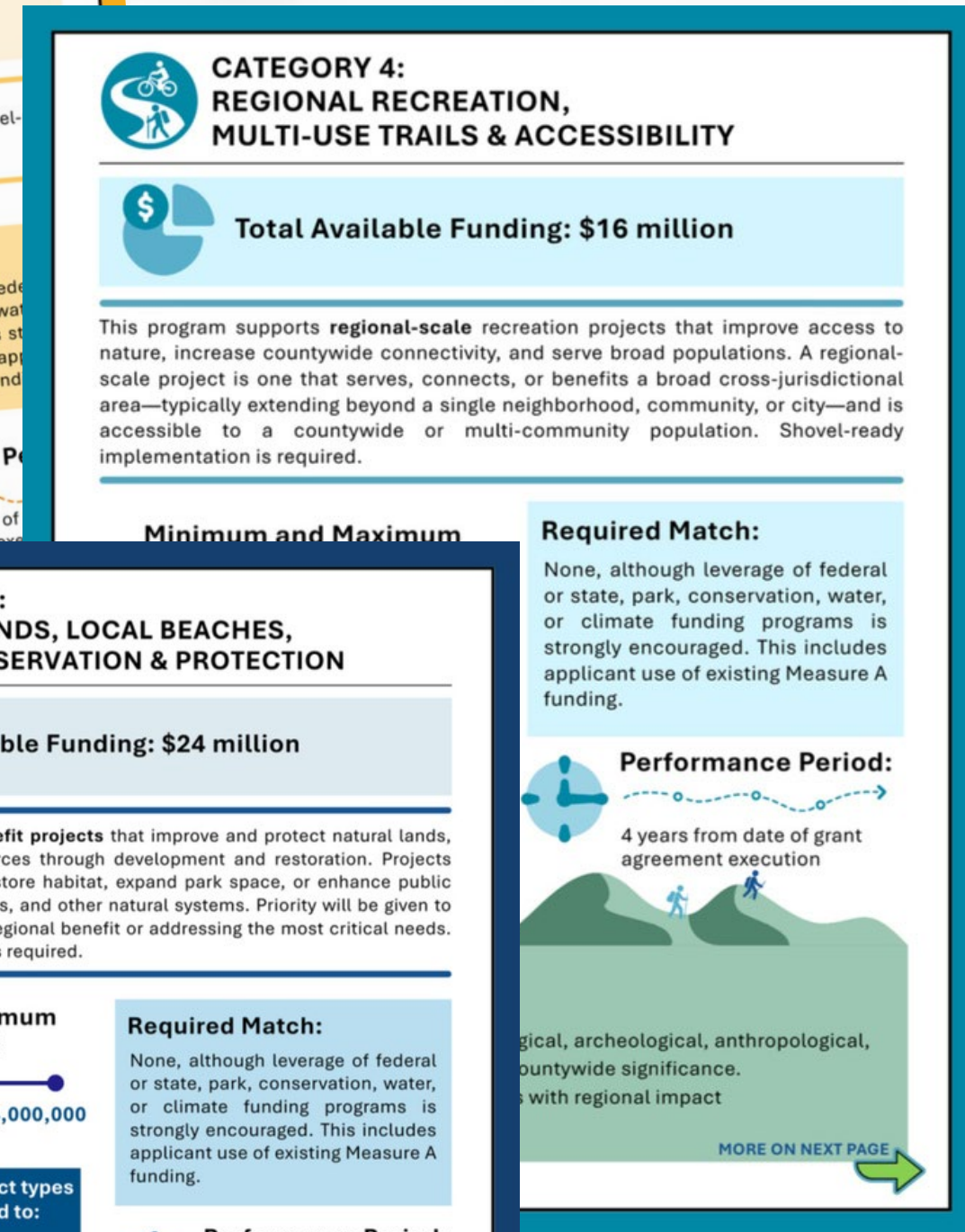
**Performance Period:**

2 years from date of grant agreement execution

**Examples of eligible grant scope include, but not limited to:**

- Conceptual or schematic design
- Project scoping
- Development of construction documents and bid documents
- CEQA and permitting work
- Feasibility and technical studies
- Land surveys
- Cost estimates
- Community engagement

(APPENDIX 1)



**CATEGORY 4:  
REGIONAL RECREATION,  
MULTI-USE TRAILS & ACCESSIBILITY**

**Total Available Funding: \$16 million**

This program supports **regional-scale** recreation projects that improve access to nature, increase countywide connectivity, and serve broad populations. A regional-scale project is one that serves, connects, or benefits a broad cross-jurisdictional area—typically extending beyond a single neighborhood, community, or city—and is accessible to a countywide or multi-community population. Shovel-ready implementation is required.

**Minimum and Maximum Grant Request**

\$100,000 ————— \$500,000

**Required Match:**

None, although leverage of federal or state, park, conservation, water, or climate funding programs is strongly encouraged. This includes applicant use of existing Measure A funding.

**Performance Period:**

4 years from date of grant agreement execution

biological, archeological, anthropological, countywide significance. Projects with regional impact

MORE ON NEXT PAGE



**CATEGORY 3:  
NATURAL LANDS, LOCAL BEACHES,  
WATER CONSERVATION & PROTECTION**

**Total Available Funding: \$24 million**

This program funds **multi-benefit projects** that improve and protect natural lands, open space, and water resources through development and restoration. Projects may improve water quality, restore habitat, expand park space, or enhance public access to rivers, beaches, lakes, and other natural systems. Priority will be given to projects offering the greatest regional benefit or addressing the most critical needs. Shovel-ready implementation is required.

**Minimum and Maximum Grant Request**

\$500,000 ————— \$4,000,000

**Required Match:**

None, although leverage of federal or state, park, conservation, water, or climate funding programs is strongly encouraged. This includes applicant use of existing Measure A funding.

**Performance Period:**

Up to 4 years from date of grant agreement execution

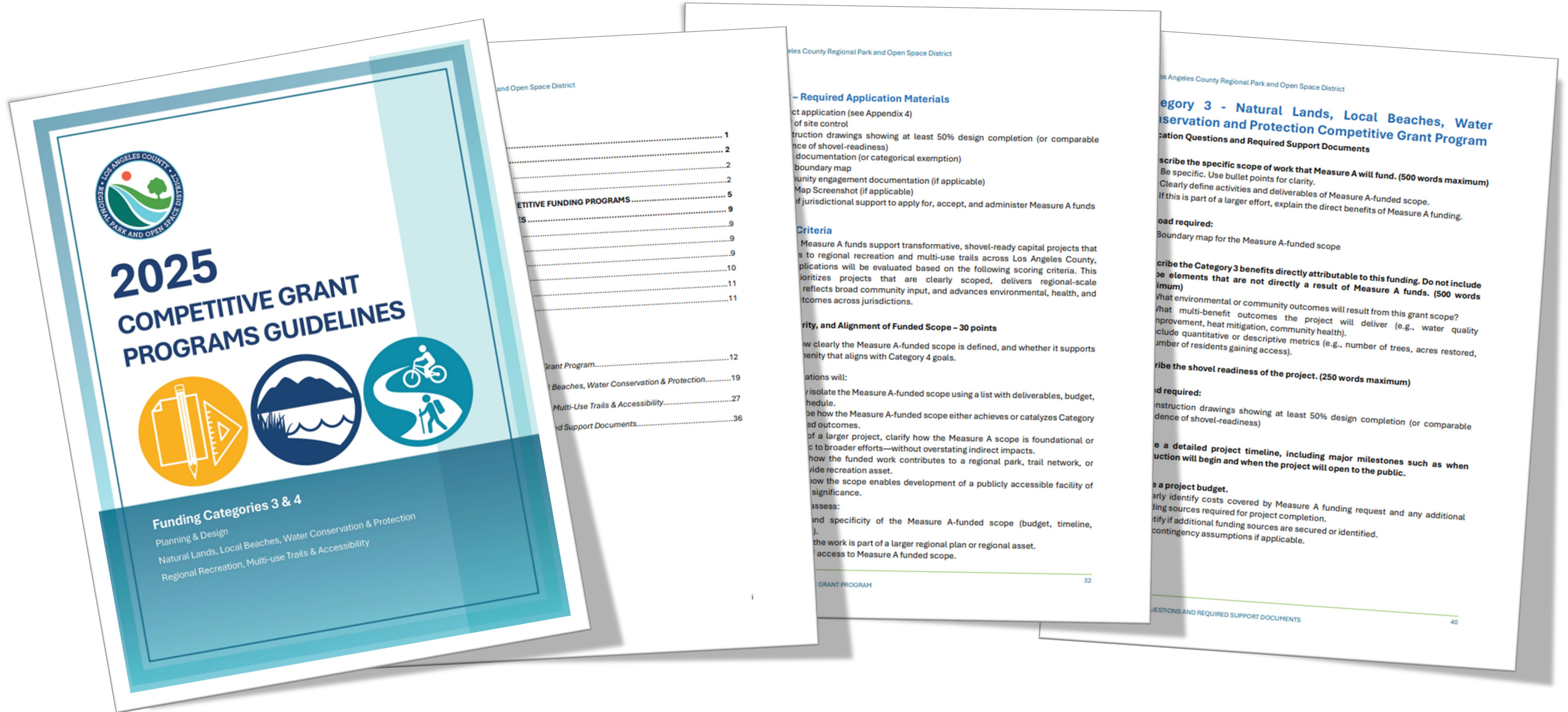
**Examples of eligible project types include, but are not limited to:**

- Riparian corridor improvements
- River and stream parkway development
- River and stream clean up, access and development
- Lake clean up, access and development
- Beach and coastal watersheds clean-up, access and development
- Fishing and boating facilities
- Natural lands, wildlife corridors, and watershed protection
- Recreational facilities, public property and rights of way, flood control infrastructure, and other easements

(APPENDIX 2)



# Read the Guidelines!





# What's New for 2025

- ▶ A new **Planning & Design** grant opportunity
  - ▶ Focus on **shovel-ready development** and **timely planning & design**
  - ▶ An increased **award cap** for development projects
  - ▶ **Scope-based evaluation** approach that prioritizes the specific work funded by Measure A
  - ▶ **Revised scoring and project evaluation**
- 

# Eligible Applicants

<b>PUBLIC AGENCIES</b>	Authorized to acquire, develop, improve, or restore parkland and open space within Los Angeles County (includes agencies of record, cities, special districts, and Joint Powers)
<b>NONPROFIT ORGANIZATIONS</b>	With a mission related to: <ul style="list-style-type: none"><li>• Environmental protection or restoration</li><li>• Parks, recreation, or community services</li><li>• Environmental education</li><li>• Gang prevention</li><li>• Job skills training for youth or veterans or</li><li>• Conservation or tree planting</li></ul>
<b>PUBLIC OR NONPROFIT SCHOOLS</b>	Provided they allow public access during non-school hours



# Application Submission Rules

All applications must be submitted online through **GMS Application Portal**

Application Portal Opens



Register in GMS\*



Application Deadline



\* New applicants are strongly encouraged to complete registration by October 1st

**10AM  
(Pacific Time)**

---

To register, visit [grantfunding.rposd.lacounty.gov](https://grantfunding.rposd.lacounty.gov).

What you'll need:

- Articles of Incorporation
- Proof of 501(c)(3) status
- Current IRS Form 990
- LA County Vendor ID number
- Enrollment in Direct Deposit



# Key Criteria

## 01 Multi-Benefit Priority

- ▶ Climate Pollution Reduction & Adaptation
- ▶ Carbon Sequestration
- ▶ Heat-Island Reduction
- ▶ Stormwater Capture
- ▶ Habitat Protection and Biodiversity
- ▶ Community Health Improvements
- ▶ Innovative Public-Private Partnerships
- ▶ Or a Combination Thereof



## 02 Identifying & Distinguishing Measure A Funded Scope

- ▶ Impact
- ▶ Feasibility
- ▶ Alignment

Applicants must focus narrative and documentation on the Measure A scope. Be precise about what Measure A is paying for, and why that portion merits funding on its own. Specific guidance on phased or projects with other funding sources can be found in Guidelines.





# Key Criteria

## 03 Level of Need

### PNA

A minimum of 30% of total funds in each grant program will be set aside for projects located in High or Very High Need Study Areas, as identified in the 2016 Countywide Parks Needs Assessment (PNA).

### PNA Plus

Results from the Park Needs Assessment Plus (PNA+) will be used to inform evaluation of applications—particularly for rural, regional, and underrepresented communities—to ensure that unique needs and access disparities are meaningfully addressed across the County. Finally, level of need will also be considered in the scoring process.





# Park Needs Assessment

## Evaluation Criteria

### Alignment with PNA and PNA+

#### High or Very High Need Study Areas based on Park Needs Assessment – Up to 20 points

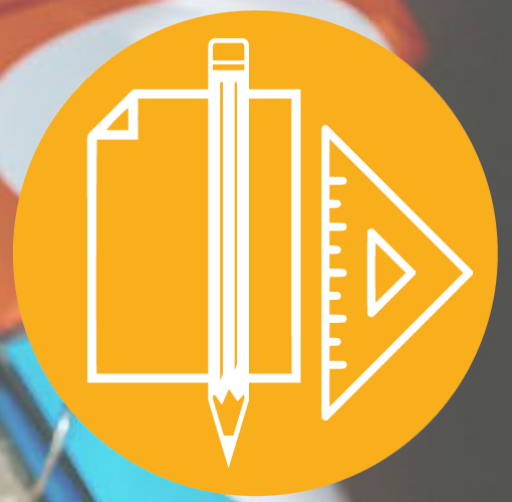
- ☐ 20 points: Project is physically located in Very High Need Study Area.
- ☐ 15 points: Project is physically located in High Need Study Area.
- ☐ Up to 10 points: Project is not located in a High/Very High Need area but clearly benefits those residents (based on visitation or partnerships).

#### Park Needs Assessment Plus (PNA+) Alignment – Up to 12 points

Applicants are required to use the PNA+ Map Viewer available at [lacountyparkneeds.org/pnaplus-maps](https://lacountyparkneeds.org/pnaplus-maps).

Applicants must specifically reference location of proposed scope. If no specific location is known, applicant must provide a statement that provides justification for the geographic selection. Points awarded based on number of PNA+ indicators addressed for either “Regional Recreation Need” or “Rural Recreation Need.”

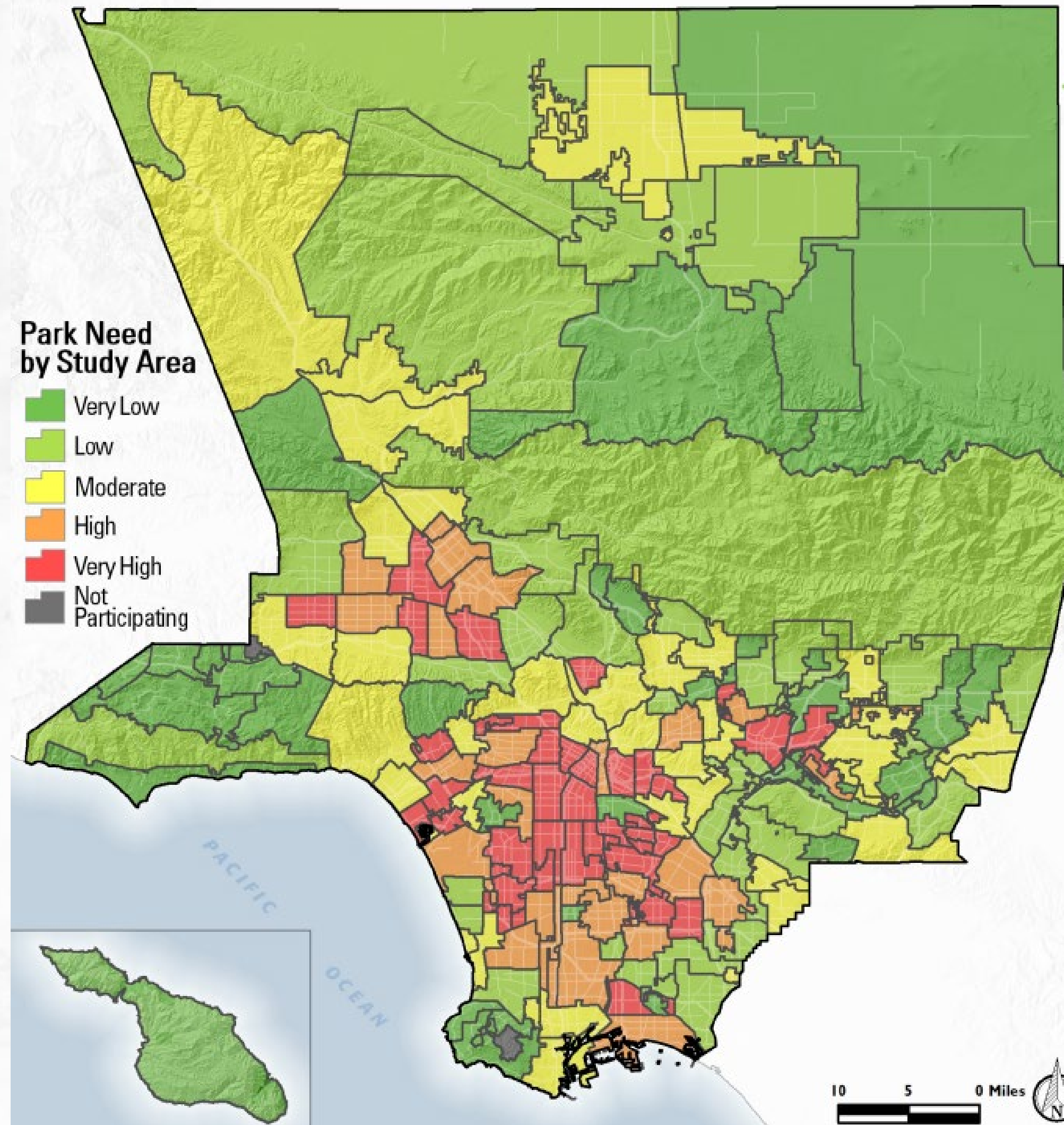
- ☐ 1 Indicator (6 pts)
- ☐ 2 Indicators (8 pts)
- ☐ 3+ Indicators (12 pts)





# Parks Needs Assessment

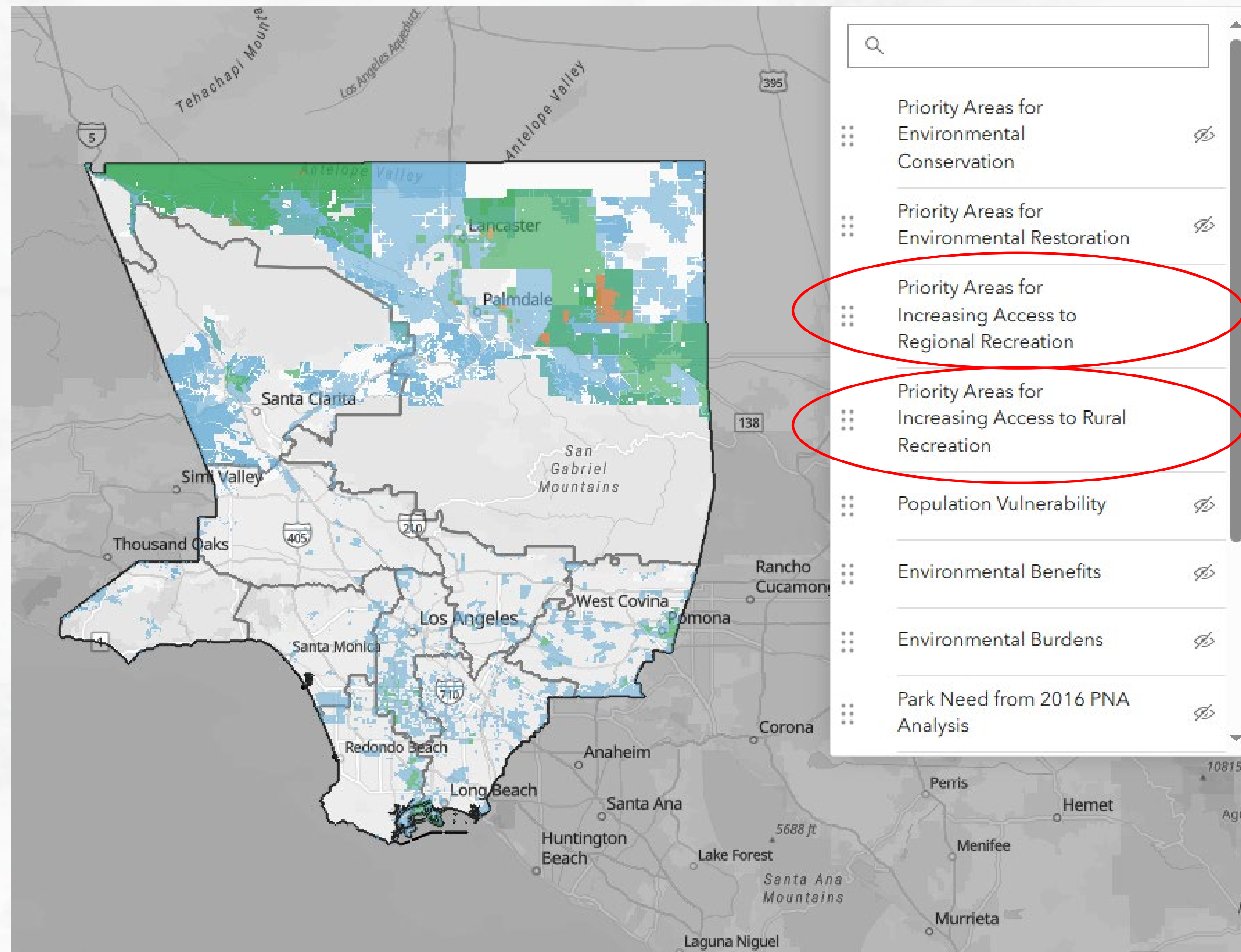
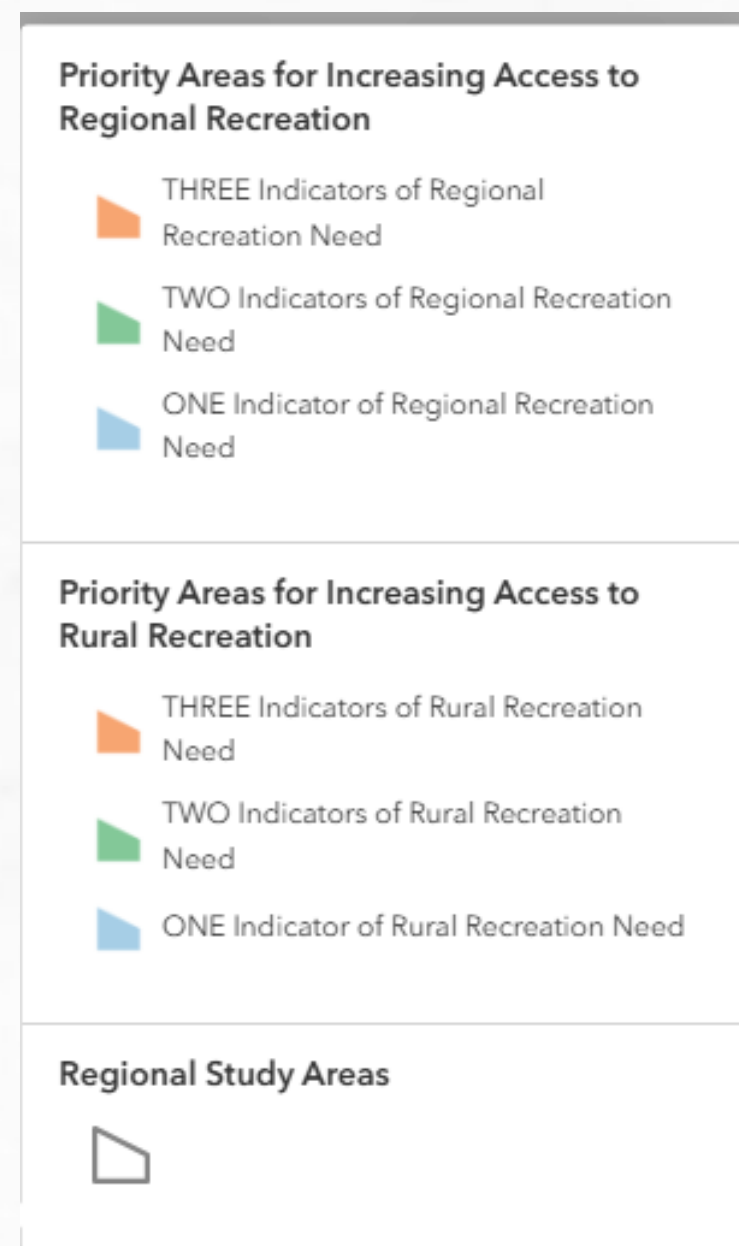
[lacountyparkneeds.org/gis-data](http://lacountyparkneeds.org/gis-data)





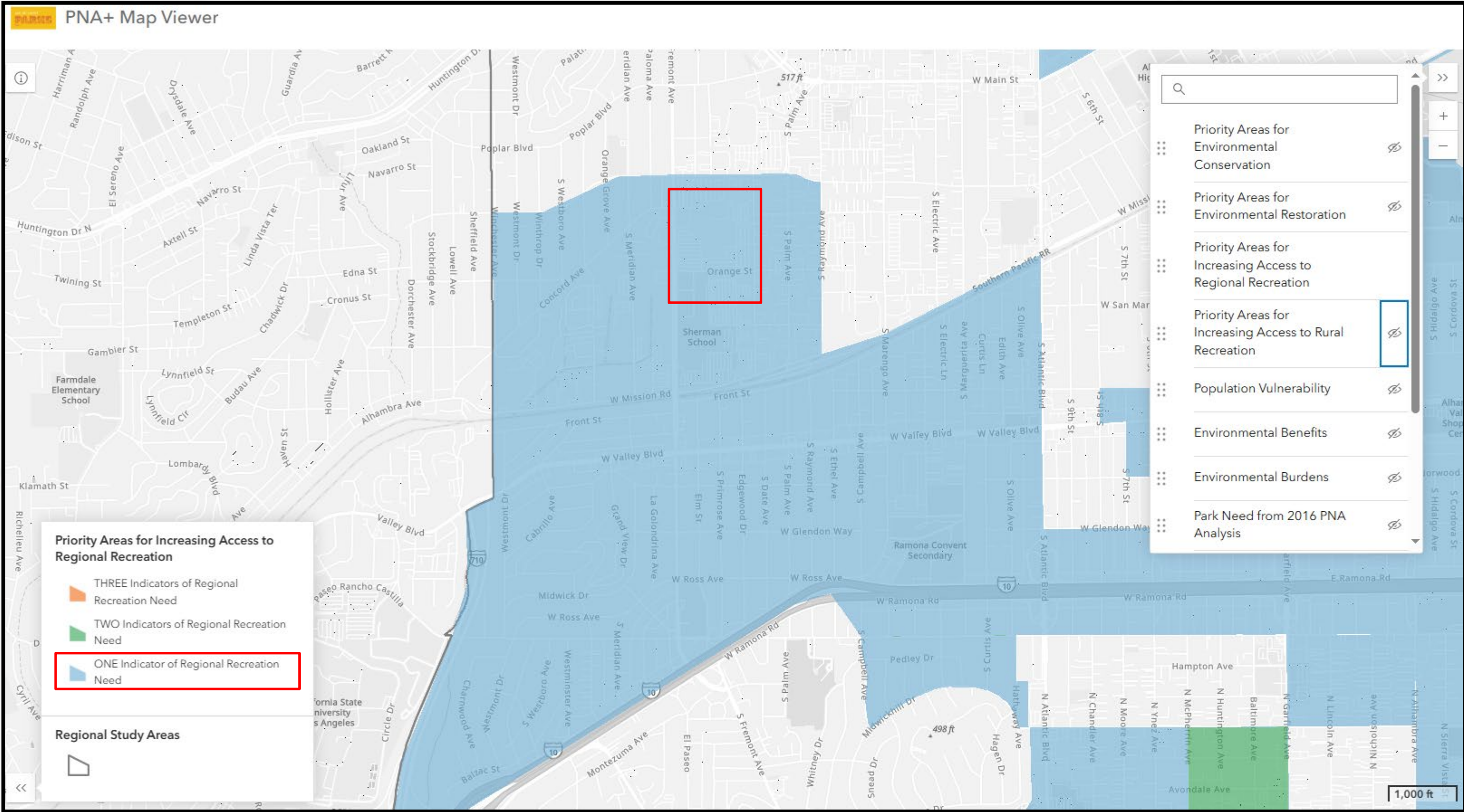
# Parks Needs Assessment *Plus*

[lacountyparkneeds.org/pnaplus-maps/](http://lacountyparkneeds.org/pnaplus-maps/)





# Parks Needs Assessment *Plus*





# Key Criteria

## 04 Completion and Public Access Requirement

All development proposals must result in tangible, publicly accessible improvements that will be completed and open to the public within the grant term.

Grantee may not close out a development grant until the funded project area is open to the public and a Measure A deed restriction has been recorded in accordance with the Grant Agreement and the Grants Administration Manual (GAM).





# Key Criteria

## 05 Material Findings Disclosure

If significant developments arise at any point after an application has been submitted, applicants/grantees should submit written notice within 10 business days of discovery

Examples:

- Substantially change the proposed or approved scope
- Affect the project's timeline or milestones
- Raise concerns about project feasibility or timely implementation

## 06 No "Double Dipping"

Measure A Competitive Grant funds may not be used to fund any project element for which funding has already been secured (either from Prop A, Measure A, or other sources).

Applicants may only request funding for project elements distinct and separate from any project elements funded by other sources.





# Award Limits

## Award Limits Per Grantee

Applicants are not limited in the number of applications they submit. However, to promote equity and ensure broad distribution of funds, there is a limit on the **total amount of funding that may be applied for and awarded** to any single **lead applicant** across all Grant Programs:

Agencies of Record serving 10 or more Study Areas	May apply for and be awarded up to \$15 million total across all programs.
Agencies of Record serving 3 to 10 Study Areas	May apply for and be awarded up to \$10 million total across all programs.
Agencies of Record serving 1 to 2 Study Areas, eligible public agencies, nonprofits, and organizations	May apply for and be awarded up to \$5 million total across all programs.

*If an applicant submits proposals that collectively exceed the applicable funding cap, RPOSD, at its sole discretion during the administrative pass/fail review, shall remove and disqualify one or more applications, to bring the total request within the allowable cap.*



for illustration only

An agency of record that serves one Study Area



\$5M

Green Haven Park Project  
P&D Application  
\$200K

Dreamland Park Project  
Cat 3 Application  
\$2 million

Tranquil Trails Park Project  
Cat 4 Application  
\$2.8 million





# Planning & Design

**Total Available: \$18 million**

Category 3: \$9 million

Category 4: \$9 million

## Purpose & Objectives

- Supports pre-construction efforts that lead to shovel ready projects
- Helps agencies compete for future development funding
- All work funded through this program must directly support the creation or improvement of a **Measure A-eligible** development project and consistent with the GAM

### Grant Amount



### Brackets

Bracket	Total Grant Request
Small	\$100,000 - \$249,999
Medium	\$250,000 - \$399,999
Large	\$400,000 - \$500,000

### Performance Period





# Planning & Design

## Eligible

Planning & Design grants may fund the following:

- Conceptual design, schematic design, or design development
- Construction documents and permitting
- CEQA and environmental studies
- Feasibility or technical assessments
- Site planning and cost estimation
- Community engagement and co-design activities

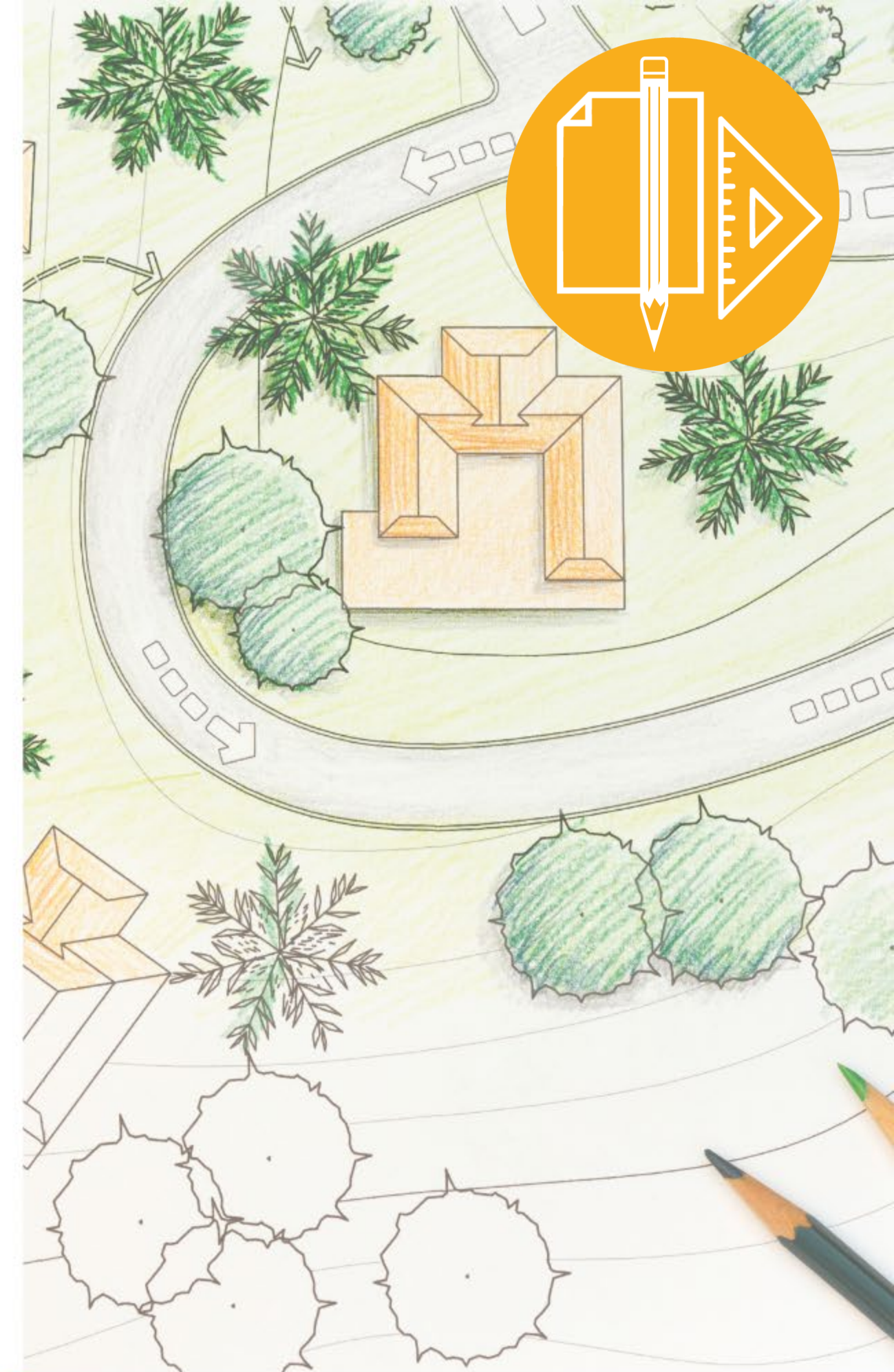
*All costs must comply with the GAM*

## Ineligible

Activities ineligible for Measure A reimbursement are outlined in the GAM.

They include, but are not limited to:

- General or long-range planning documents (e.g., General Plans, Park Master Plans)
- Academic research or open-ended policy analysis
- Projects not intended to result in a capital improvement
- Direct services or training programs
- Any activity inconsistent with Measure A or the GAM in RPOSD's sole discretion

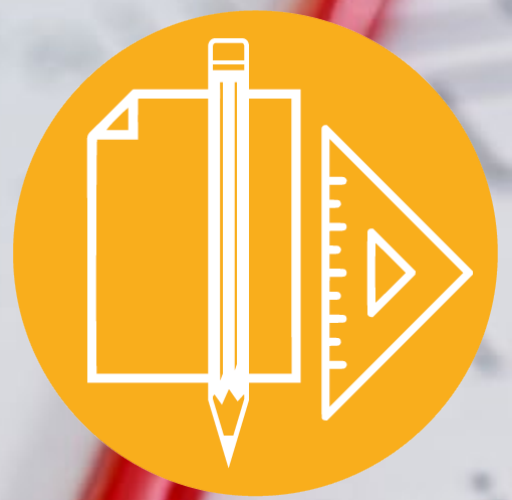




# Planning & Design

## Minimum Requirements (Pass/Fail)

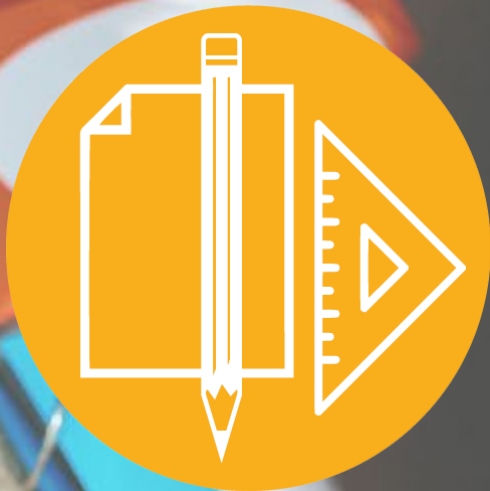
- ☐ Project must align with Category 3 or 4 eligibility
- ☐ Site control that supports long-term public access
  1. Owned by Applicant
  2. Formal Agreement with Owner
    - \* Owner must affirm project scope and
    - \* Willingness to implement future development that results from planning efforts
- ☐ Complete timeline
- ☐ Clear plan for CEQA and permitting
- ☐ Disclosures of any adverse site conditions
- ☐ Complete Application
- ☐ Proof of Jurisdiction support



# Planning & Design

## Evaluation Criteria

Impact, Clarity & Alignment of Funded Scope	40 points
Readiness, Feasibility, and Long-Term Value	20 points
Community Engagement	20 points
Capacity & Implementation Plan	20 points
<i>Alignment with PNA and PNA+</i>	<i>32 points</i>





# Planning & Design

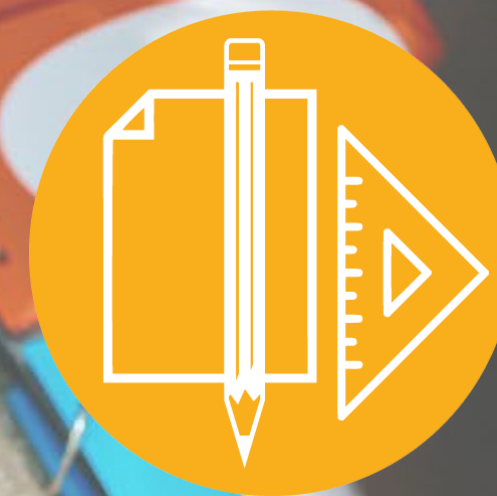
## Evaluation Criteria

### Impact, Clarity & Alignment of Funded Scope – 40 points

Evaluates how clearly the applicant defines the specific work to be funded by Measure A, and whether that work is likely to result in tangible, high-quality deliverables that enable a shovel-ready, eligible development project under Category 3 or 4. **Applicants must clearly isolate what Measure A is intended to fund and focus the narrative, budget, and documentation on that work.**

### Readiness, Feasibility, and Long-Term Value – 20 points

Assesses whether the **proposed work is feasible within the 2-year grant term** and whether it lays a **strong foundation for a future development project**. Also evaluates urgency, long-term public benefit, and whether the project will be well-positioned to compete for future development funds.





# Planning & Design

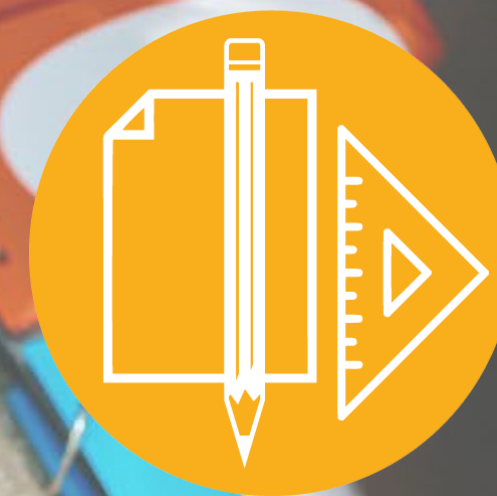
## Evaluation Criteria

### Community Engagement – 20 points

Assesses how community input informed or will inform the planning and design process. **Evaluates the intentionality, inclusiveness, and effectiveness of engagement efforts**, both completed and proposed beyond the minimum requirements. This criterion prioritizes demonstrated engagement efforts that are complete, underway, or clearly scoped and budgeted as part of the proposed grant. Points will not be awarded for engagement strategies that are aspirational but not part of the grant-funded work.

### Capacity & Implementation Plan – 20 points

Assesses whether the applicant team has the **experience, structure, and processes to successfully deliver** the proposed planning work.







# Category 3

Natural Lands, Local Beaches, Water Conservation & Protection

Total Available: \$24 million

## Purpose & Objectives

- Fund shovel-ready development projects
- Protect, restore, or enhance natural lands, water resources, & open space
- Provide meaningful public access
  - community health
  - clean local water supplies
  - habitat protection
  - biodiversity
  - environmental resilience
- Prioritize projects offering the greatest regional benefit
  - serving the greatest regional need



### Brackets

Bracket	Total Grant Request
Small	\$500,000 - \$1,499,999
Medium	\$1,500,000- \$2,999,999
Large	\$3,000,000 - \$4,000,000

### Performance Period



Projects must be complete  
4 Years from the date of agreement  
execution



# Category 3

Projects must result in publicly accessible improvements that are open for use by the public upon completion, consistent with a Measure A deed restriction.

Examples of eligible work include, but are not limited to:

- River, stream, and coastal access improvements
- Habitat restoration and natural lands enhancement
- Stormwater capture and watershed protection
- Tree planting and urban greening in natural spaces
- Recreational and interpretive amenities in beach or open space areas
- Lake and wetland restoration projects
- Sustainable improvements to local beaches or riparian corridors

*All costs must comply with the RPOSD Grants Administration Manual (GAM)*





# Category 3

## Minimum Requirements (Pass/Fail)

- ☐ Must be eligible under Category 3 eligibility
- ☐ CEQA complete or exempt
- ☐ Site control
  - long-term public access
  - ability to record a Measure A deed restriction
    1. Ownership, or
    2. Executed agreement, with 30 years of site control, or
    3. Turnkey Projects
- ☐ Construction is scheduled to begin within 24 months of grant agreement execution
- ☐ Complete application submitted, including all required documents and responses
- ☐ Proof of jurisdictional support to apply for, accept and administer Measure A funds



# Category 3

## Evaluation Criteria

Impact, Clarity & Alignment of Funded Scope	35 points
Multi-Benefit Value	35 points
Readiness and Feasibility	20 points
Capacity & Project Delivery	10 points
<i>Alignment with PNA and PNA+</i>	<i>32 points</i>





# Category 3

## Evaluation Criteria

### Impact, Clarity & Alignment of Funded Scope – 35 points

Assesses how clearly the Measure A-funded scope is defined and whether the proposed work will result in measurable outcomes aligned with Category 3 goals.

### Multi -Benefit Value – 35 points

Assesses the breadth and quality of co-benefits delivered by the Measure A-funded scope, such as habitat enhancement, stormwater capture, improved access, or climate resilience.

### Readiness and Feasibility– 20 points

This criterion evaluates whether the project is ready to begin construction within 24 months of grant agreement execution and whether any constraints are adequately addressed.

### Capacity and Project Delivery – 10 points

Evaluates the applicant's experience, team capacity, and project management approach.





# Category 4

Regional Recreation, Multi-use Trails & Accessibility

Total Available: \$16 million

## Purpose & Objectives

This program supports shovel-ready capital projects that expand or improve regional recreation, multi-use trail systems, and public accessibility to parks and open space across Los Angeles County.

Projects must demonstrate regional significance by serving diverse populations across multiple communities, enhancing multi jurisdictional trail systems, or delivering substantial recreational improvements that benefit the county at large. Regional projects often connect jurisdictions, serve destination users, or represent a unique resource of countywide value.



Brackets	
Bracket	Total Grant Request
Small	\$500,000 - \$1,499,999
Medium	\$1,500,000- \$2,999,999
Large	\$3,000,000 - \$4,000,000





# Category 4

Projects must demonstrate broad public benefit, strong regional utility, and long-term public access.

Eligible activities include but are not limited to:

- Development of new or improved multi-use trails (pedestrian, bicycle, equestrian)
- Regional park improvements and amenities.
  - Regional parks are defined as facilities with:
    - o At least 100 contiguous acres and have three or more active recreational amenities.
    - o A service area or user base that extends beyond the local neighborhood or city.
- ADA-compliant access paths, connections, or trail enhancements
- Rehabilitation, upgrade, or enlargement of substantial public recreational facilities that serve regional or multi-community populations. These facilities are typically characterized by their size, complexity, and intensity of use, and may include—but are not limited to—sports complexes, aquatic centers, amphitheaters, regional skate or bike parks, multi-field athletic venues, or large-scale day-use areas within regional parks
- Facilities that serve regional populations or connect multiple jurisdictions
- Interpretive features or signage that enhance accessibility and regional identity

*All costs must comply with the GAM*





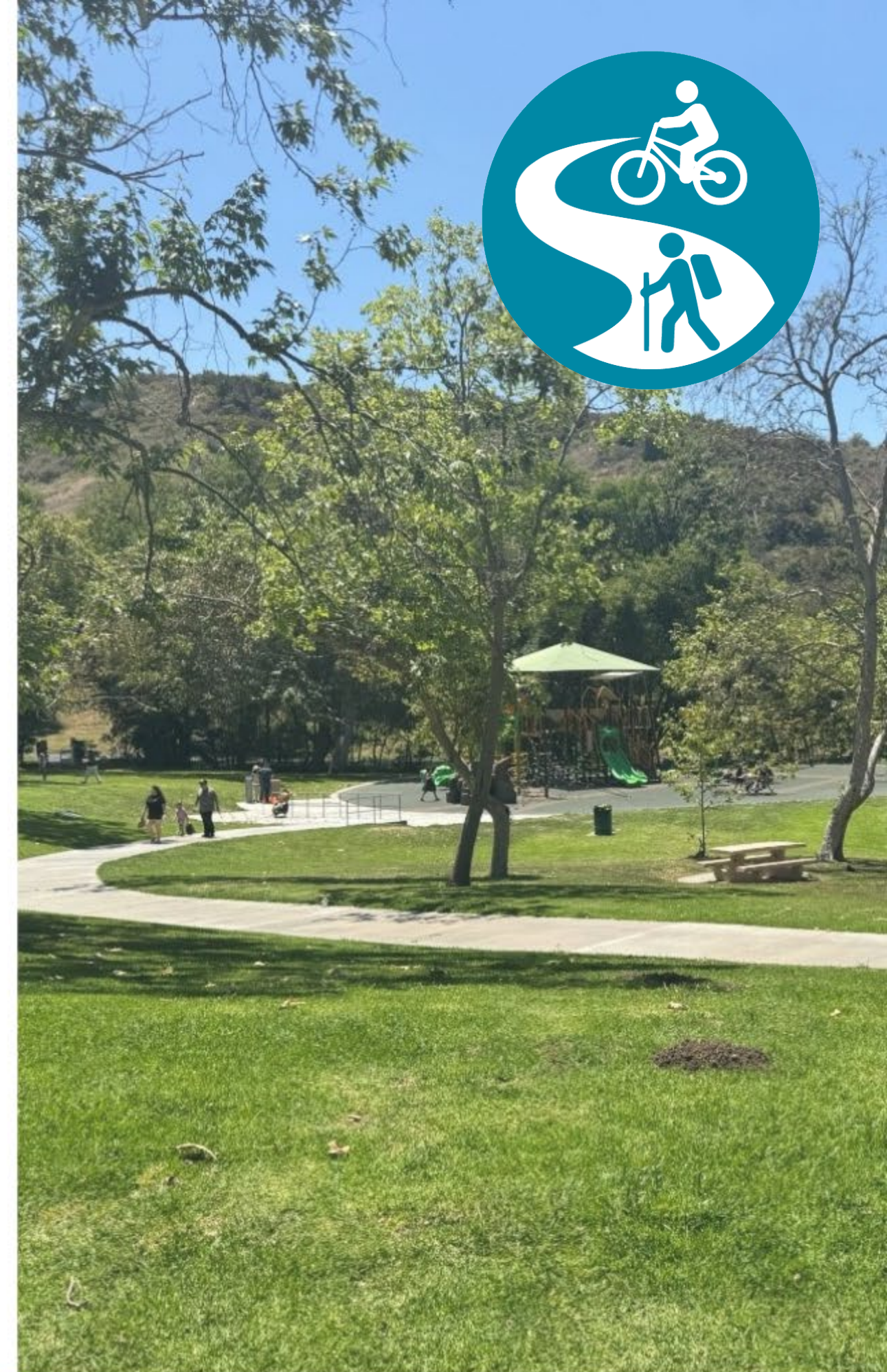
# Category 4

## Regional Scale Requirement

To qualify as regional-scale, a project must demonstrate benefits that go beyond the immediate community, advance countywide or regional goals, and be designed to serve a broad and diverse population—not just nearby residents.

Projects must meet **at least three** of the following criteria to be considered regional-scale:

- ☐ Serve multiple jurisdictions or census-defined communities
- ☐ Demonstrated usage by visitors from beyond the local area
- ☐ Advance a priority identified in a Countywide, State, or Regional Plan
- ☐ Address a regional service gap, provide a key access point to a regional resource, or create a linkage within a larger regional network
- ☐ Involve partnerships or joint implementation with other cities, counties, or regional agencies





# Category 4

## Minimum Requirements (Pass/Fail)

- ☐ Must be eligible under Category 4 eligibility
- ☐ Qualifies as regional scale
- ☐ CEQA complete or exempt
- ☐ Site control
  - long-term public access
  - ability to record a Measure A deed restriction
    1. Ownership, or
    2. Executed agreement, with 30 years of site control, or
    3. Turnkey Projects
- ☐ Construction is scheduled to begin within 24 months of grant agreement execution
- ☐ Complete application submitted, including all required documents and responses
- ☐ Proof of jurisdictional support to apply for, accept and administer Measure A funds



# Category 4

## Evaluation Criteria

Impact, Clarity & Alignment of Funded Scope	30 points
Regional Scale	25 points
Multi-Benefit Impacts	15 points
Readiness, Feasibility & Timeliness	20 points
Capacity & Project Delivery	10 points
<i>Alignment with PNA and PNA+</i>	<i>32 points</i>





# Category 4

## Evaluation Criteria

### Impact, Clarity & Alignment of Funded Scope – 30 points

Evaluates how clearly the Measure A-funded scope is defined, and whether it supports a regional amenity that aligns with Category 4 goals.

### Regional Scale– 25 points

Assesses how the project enhances regional access and physical connections, particularly those linking high-priority natural, urban, and recreational areas (e.g., County Parks, National Forests, coastal areas).

### Multi -Benefit Impacts – 15 points

Evaluates the range and quality of benefits delivered by the project, such as community health, environmental sustainability, and social resilience.





# Category 4

## Evaluation Criteria

### Readiness, Feasibility & Timeliness– 20 points

Evaluates whether the project is shovel-ready and able to begin construction within 24 months.

### Capacity & Project Delivery – 10 points

Assesses whether the applicant and project team can deliver a complex, regional-scale project on time and within budget without sacrificing community involvement.







# Questions

Type your question into the [Q&A](#).

*We cannot confirm eligibility or provide tailored guidance on individual projects, we strongly encourage you to carefully review the grant guidelines, which outline all eligibility requirements, funding limitations, and evaluation criteria.*





# Need Help?

For general questions: [info@rposd.lacounty.gov](mailto:info@rposd.lacounty.gov).  
Subject line: 2025 Competitive Grant Programs

For applicants in High or Very High Need Study Areas seeking technical assistance or support, contact, contact: [tap@rposd.lacounty.gov](mailto:tap@rposd.lacounty.gov).

All questions must be submitted by **October 15, 2025**, to ensure a response before the application deadline.

