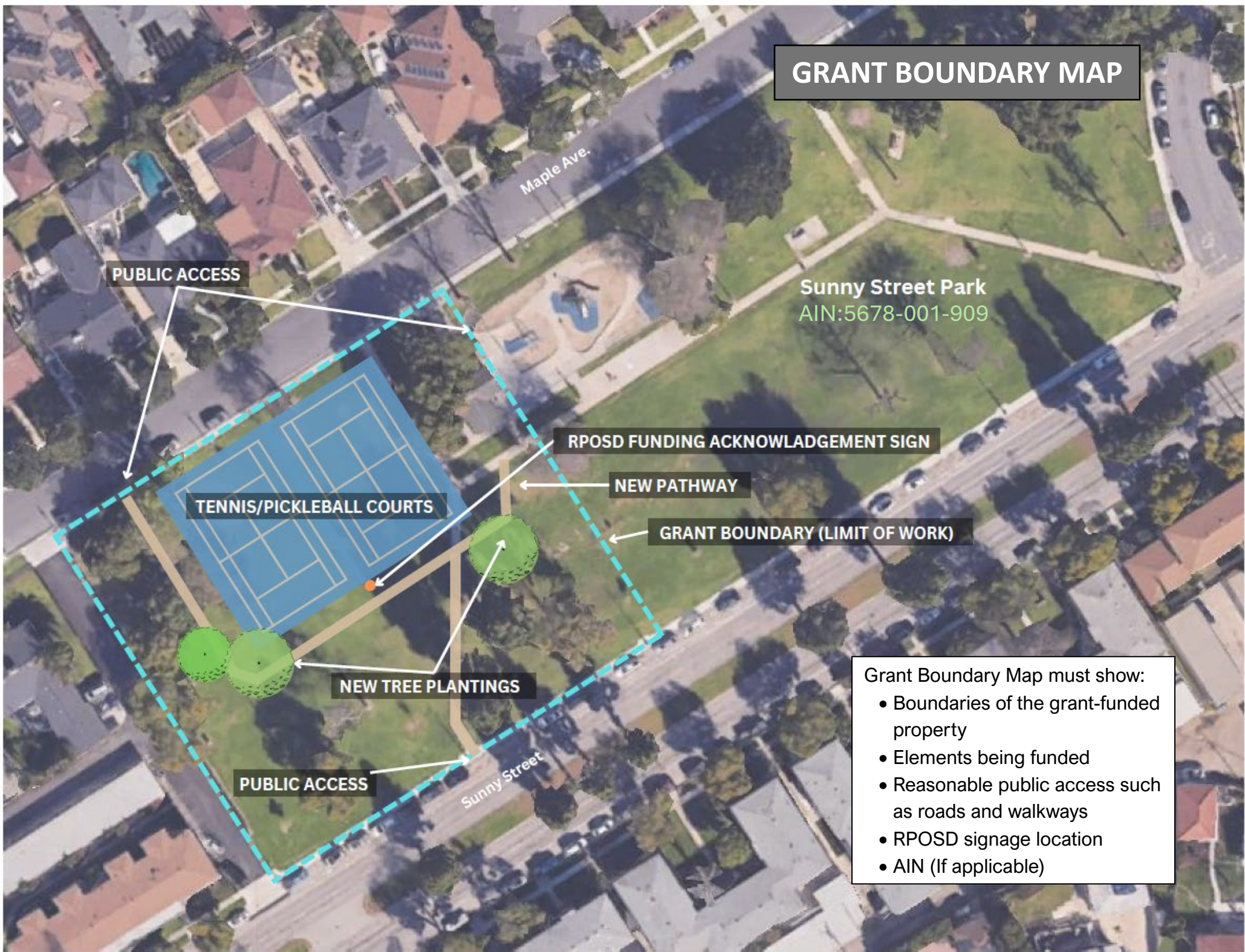


GRANT BOUNDARY MAP



PUBLIC ACCESS

Maple Ave.

Sunny Street Park
AIN:5678-001-909

TENNIS/PICKLEBALL COURTS

RPOSD FUNDING ACKNOWLEDGEMENT SIGN

NEW PATHWAY

GRANT BOUNDARY (LIMIT OF WORK)

NEW TREE PLANTINGS

PUBLIC ACCESS

Sunny Street

Grant Boundary Map must show:

- Boundaries of the grant-funded property
- Elements being funded
- Reasonable public access such as roads and walkways
- RPOSD signage location
- AIN (If applicable)