

Measure A Technical Assistance Program (TAP)



Los Angeles County
Regional Park and Open Space District

March 30, 2023



TECHNICAL ASSISTANCE PROGRAM (TAP)



AGENDA

Welcome & Introductions

Measure A

What is the Technical Assistance Program (TAP)

TAP July 2022 Allocation

Non-Profit Collaboration

Q & A

Housekeeping



MEASURE A



LOS ANGELES COUNTY SAFE, CLEAN NEIGHBORHOOD PARKS AND BEACHES MEASURE OF 2016

- Approved by 75% of Los Angeles County voters (November 2016)
- Generates approximately \$109 Million/year
- Annual parcel tax of 1.7 cents per sq. ft. of improved property
- Informed by the Park Needs Assessment (2016)



MEASURE A PROVIDES FUNDING



TO:

- Create new parks
- Repair and upgrade parks and recreational facilities
- Preserve and protect open spaces and beaches & support recreational programming

THROUGH GRANTS:

- Annual Allocations
- Maintenance & Servicing (M&S)
- Competitive Grants



TAP PROGRAM OVERALL GOALS



1. Increase access to parks, open space and natural areas
2. Provide technical assistance through consulting services
3. Provide timely, proactive, and flexible resources to help
 - a) Leverage other funding including County, state, and federal programs
 - b) Support parkland development, planning, and project design, funding, grant administration, and project management
4. Create and support relationships between eligible government agencies, joint power authorities, non-profits, community-based organizations
5. Deliver completed park projects



TAP FUNDS PROFESSIONAL SERVICES



1. Community Outreach and Engagement

2. Planning

- a. project scoping, park conceptualization and project development
- b. cost estimation and leveraging
- c. master planning for land acquisition

3. Design

- a. park project design
- b. environmental studies and acquisition services
- c. engineering and construction documents

4. Grant writing and application assistance for Measure A grants

5. Project and Construction Management

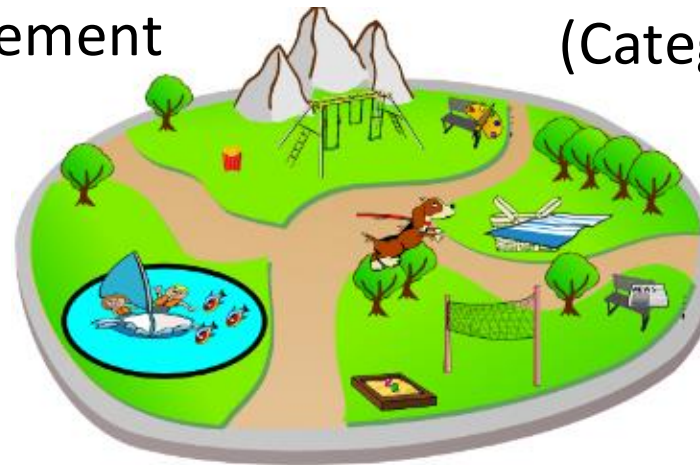


THE MEASURE A & TAP CONNECTION



TAP funding requires a nexus between the proposed project and Measure A:

- Natural Lands, Local Beaches, Water Conservation and Protection Program (Category 3)
- Regional Recreational Facilities, Multi-Use Trails and Accessibility (Category 4)
- Youth & Veteran Job Training and placement (Category 5)
- Recreation Access
- Acquisition Only



TAP FUNDING IS FOR



Cities

&

Unincorporated
Los Angeles County

representing

High or Very High Need Study Areas

(as informed by the Park Needs Assessment of 2016)



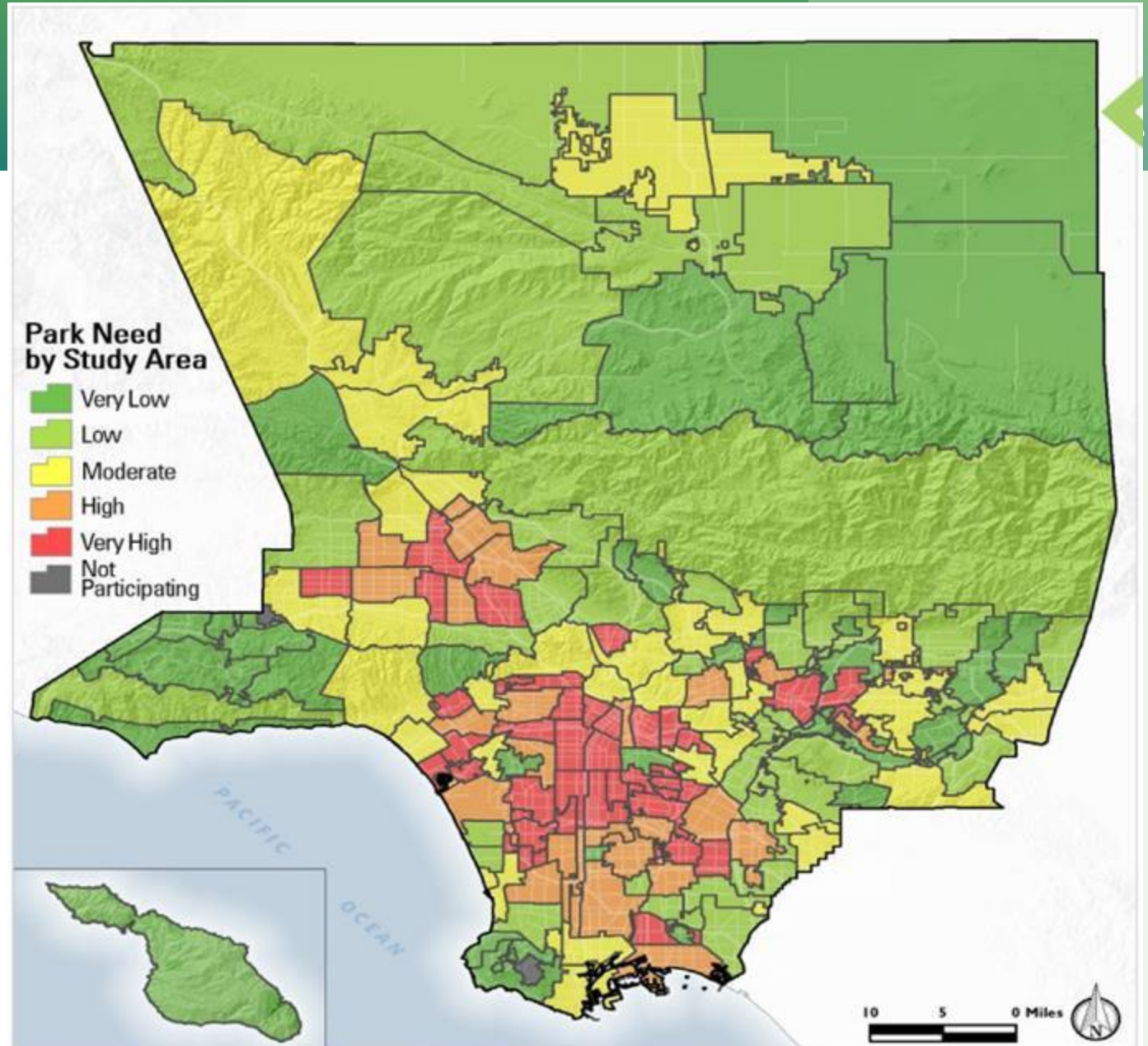
PARK NEEDS ASSESSMENT

LEGEND

● Very High Need

● High Need

<https://rposd.lacounty.gov/park-needs-assessment/>



HIGH NEED & VERY HIGH NEED AREAS



TAP ELIGIBLE CITIES

Very High Need (15)

Baldwin Park
Bell
Bell Gardens
Bellflower
Cudahy
El Monte
Glendale*
Hawthorne
Huntington Park
Inglewood
Lawndale
Maywood
Paramount
South Gate
West Hollywood

High Need (12)

Alhambra
Artesia
Carson
Compton
Downey
Gardena
La Puente
Lynwood
Norwalk
San Fernando
Temple City
Torrance*

* Denotes a portion of the city



HIGH NEED & VERY HIGH NEED AREAS



City of Los Angeles - \$1M

Very High Need

Boyle Heights
Canoga Park
Central City
Exposition Park-University Park
Hollywood South
Mission Hills
North Hollywood
Palms-Mar Vista
South Los Angeles
Southeast Los Angeles
Southeast LA-North
Van Nuys-North Sherman Oaks
Venice
West Adams
Westlake
Westwood-Veterans Center

High Need

Arleta- Pacoima
Baldwin Hills-Leimert Hills
Central City-North
Harbor Gateway
Northridge
Reseda-West Van Nuys
Sun Valley-La Tuna Canyon
Valley Glen
Westchester-Playa del Rey/LAX
West LA
Wilshire
Wilshire West



HIGH NEED & VERY HIGH NEED AREAS



County of Los Angeles (Unincorporated) - \$1M

Very High Need

Bassett–West Puente Valley	Florence–Firestone
East Los Angeles–Northwest	Hawthorne
East Los Angeles–Southwest	Lennox
East Rancho Dominguez	Walnut Park
East San Gabriel–Arcadia	West Athens
	West Carson

High Need

Charter Oak Islands
Del Aire
Willowbrook

Long Beach - \$400K

Very High Need

Long Beach West

High Need

Long Beach North
Long Beach South





To Increase
Park Acreage
and
Develop
New Parkland



TAP -- JULY 2022 ALLOCATION FUNDS



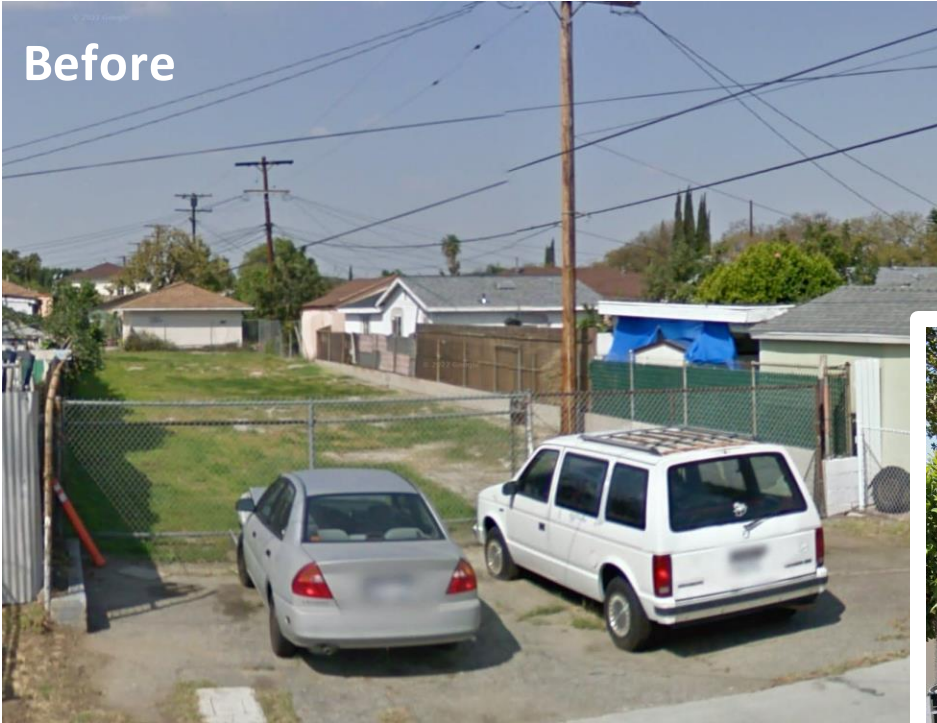
- Conducting a land inventory to determine potential for NEW parkland
- Conducting due diligence and pre-acquisition real estate negotiations related to land acquisition
- Conducting elements related to new park development for vacant land including outreach and engagement, design, project and construction management



PROJECT IDEA -- POCKET PARK

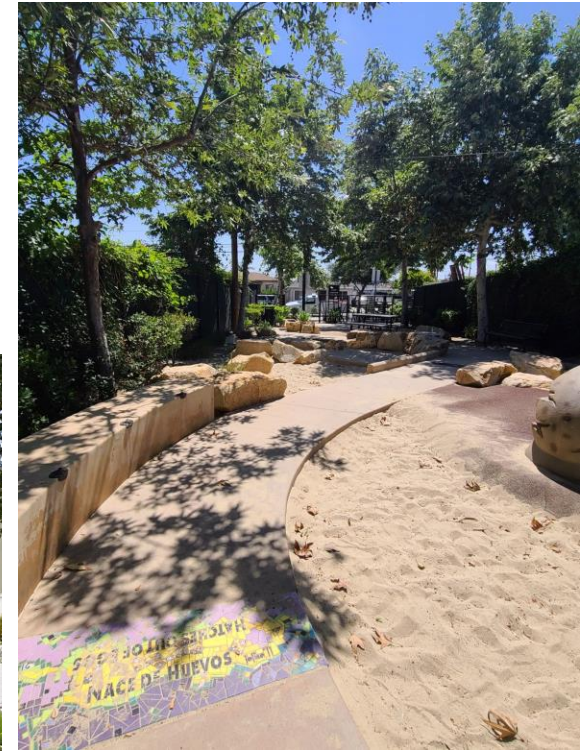
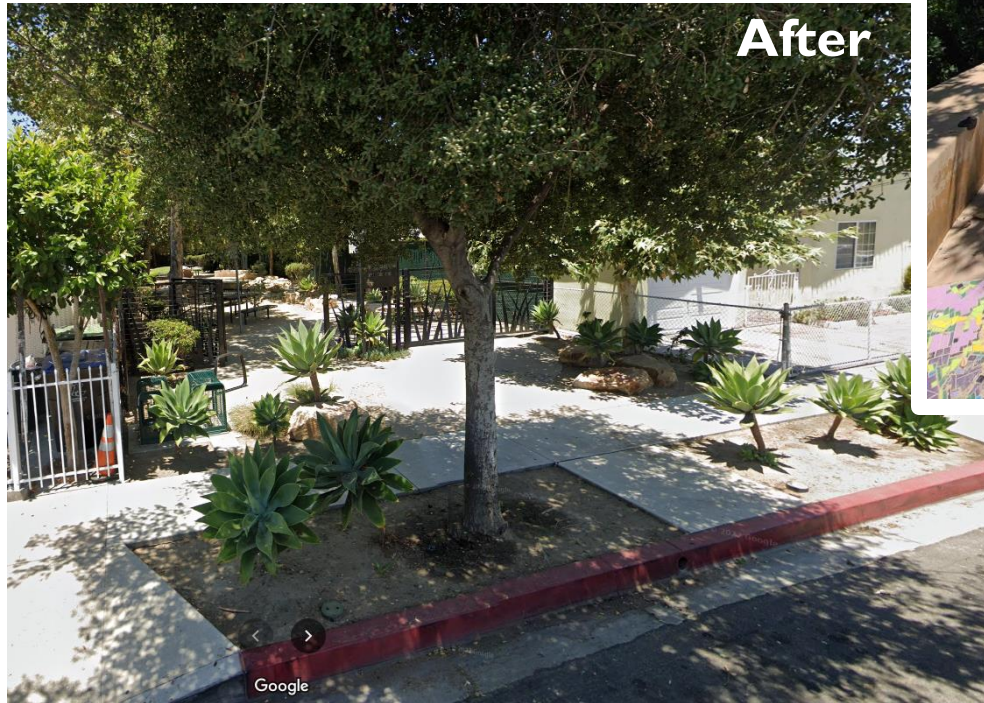


Before



Pine Avenue Park, Maywood

After



PROJECT IDEA -- LINEAR OR PASSIVE PARK



Before

Ricardo Lara Linear Park, Lynwood



After

PROJECT IDEA – DOG PARKS



Silverlake, Los Angeles City Dog Park

PROJECT IDEA -- RAILS TO TRAILS



Source Metro-LA

Enter into long-term lease agreements

To develop unused land into parkland and open spaces with:

- Utility companies
- Railroad
- Other government entities

OTHER PROJECT IDEAS –



Skate Parks

Botanical Gardens

Community Gardens

Green Alleys



Franklin D. Roosevelt Park, Los Angeles



TAP -- JULY 2022 ALLOCATION - ELIGIBILITY



- The property is located in a High or Very High Need area
- Eligible entity must be in good standing with RPOSD's guidelines, policies, and procedures
- The proposed property was not counted in the 2016 Park Needs Assessment
- The property was not added to the city's parkland inventory after 2016
- The property is not currently zoned for park use



ANOTHER TAP FUNDING SOURCE...

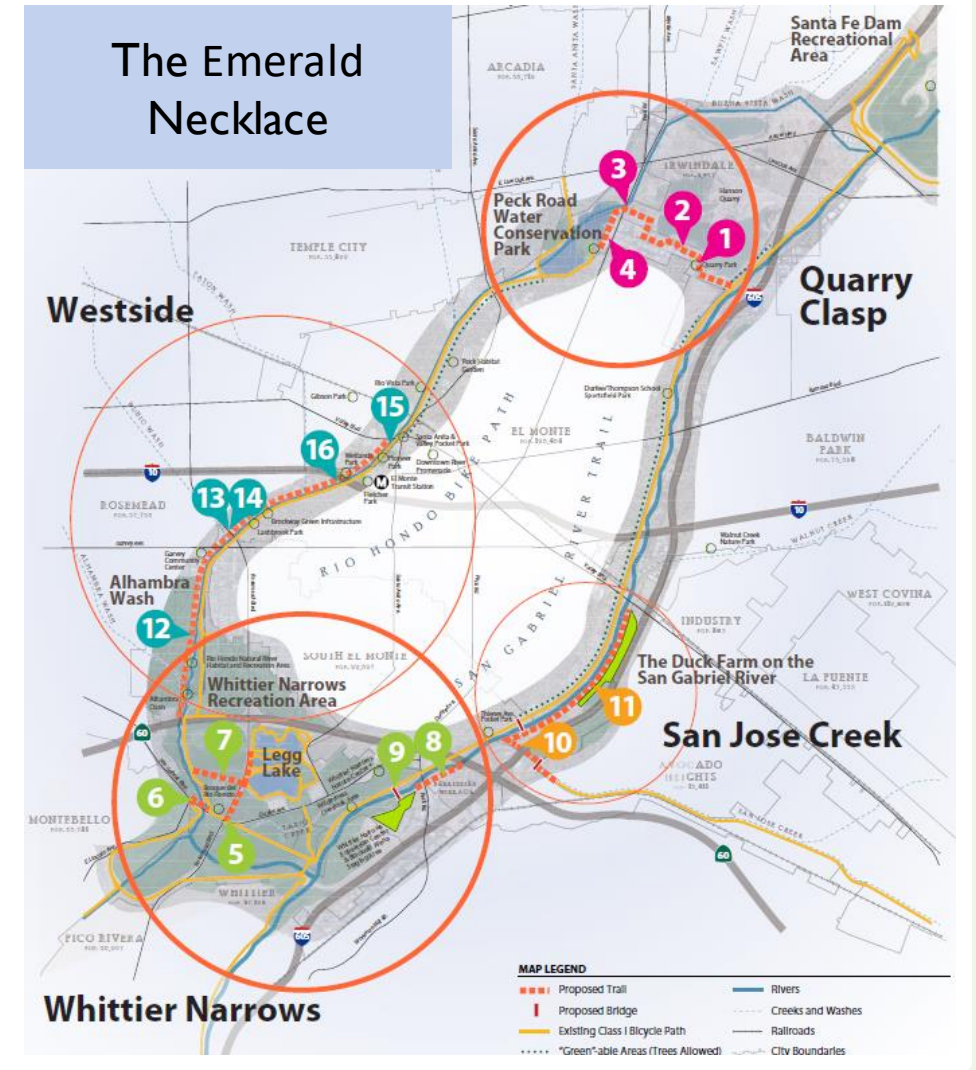


MULTIJURISDICTIONAL PROJECTS

- Projects that span across city or county boundaries
- There must be one lead applicant (eligible entity) identified in the TAP services request

Project Ideas:

- Expansion of park land
- Park access enhancement
- Trail connections
- Long term lease



HOW CAN NON-PROFITS BE INVOLVED WITH TAP?



- BECOME A QUALIFIED CONSULTANT

- PROVIDE IDEAS FOR ELIGIBLE TAP PROJECTS



HOW CAN NON-PROFITS BE INVOLVED WITH TAP?



☑ BECOME A QUALIFIED CONSULTANT

- RPOSD maintains a list of qualified consultants
- Qualified consultants are invited to bid on TAP projects



HOW CAN NON-PROFITS BE INVOLVED WITH TAP?



PROFESSIONAL SKILLS RPOSD IS LOOKING FOR:

- Acquisition Services (land inventory, real estate negotiations)
- Environmental Studies (geotechnical survey, CEQA, soils tests)
- Project Feasibility and Cost Estimation
- Planning, Scoping, Design, Engineering, & Construction Doc
- Project and Construction Management
- Community Outreach & Engagement
- Grant Writing and Application (future allocations)



HOW CAN NON-PROFITS BE INVOLVED WITH TAP?



HOW TO BECOME A QUALIFIED CONSULTANT:

- Go to the RPOSD website
- In the Technical Assistance Menu select TAP Partners
- Scroll down to TAP vendors
- Review the Request for Statement of Qualifications (RFSQ) and Addendums 1 & 2

You'll need to provide:

- Business License
- Insurance
- Examples of projects
- Submit a Statement of Qualifications (SOQ)
- other



HOW CAN NON-PROFITS BE INVOLVED WITH TAP?



☑ PROVIDE IDEAS FOR ELIGIBLE TAP PROJECTS

- Work closely with the community
- Have specific ideas, know of land or spaces that may be feasible to develop new parks and open spaces
- Can offer a very unique skill set consistent with their organization's mission, valuable to park projects
- May be able to leverage funds to develop parkland



RPOSD HIGHLIGHTS



Measure A Competitive Grants

- \$26 Million Awarded (Categories 3, 4, and Acquisition Only) - February 2022
- \$12.9 Million Awarded (Youth & Veterans and Recreation Access) - February 2023

TAP Program Funding Allocations

- \$9.1 Million – July 2022

Brown Bag Lunch Series- April 12, Noon, Quarterly

Updates to the GAM - June 2023: April 5th and 6th (3-4:30pm)

Replacement of Grants Management System (GMS)



QUESTION & ANSWERS





USEFUL RESOURCE LINKS

REGIONAL PARK AND OPEN SPACE DISTRICT

<https://rposd.lacounty.gov/>

TAP POLICY AND GUIDELINES

http://file.lacounty.gov/SDSInter/dpr/1128830_TAPpolicyANDallocationguidelines2022.pdf

REQUEST FOR STATEMENT OF QUALIFICATIONS (RFSQ)

https://file.lacounty.gov/SDSInter/dpr/1121455_TAP_RSFAQ





Thank You!



Los Angeles County
Regional Park and Open Space District

Email: mvergara@rposd.lacounty.gov, scastro@rposd.lacounty.gov
Website: RPOSD.Lacounty.gov