



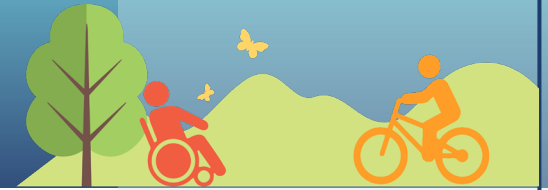
2021 Measure A Competitive Grants Programs Workshop

Los Angeles County
Regional Park and Open Space District

May 12, 2021 | June 9, 2021



Welcome



Today's Agenda

- Guidelines
- RPOSD Resources
- TAP Resources
- Competitive Grant Programs Timeline
- Natural Lands, Local Beaches, water Conservation and Protection with Q&A
- Regional Recreation, Multi-Use Trails and Accessibility with Q&A
- Acquisition-Only with Q&A
- Action Items for Applicants



Guidelines

Guidelines pg. 5



Application Submission Rules

- 1 application per program.
- Must apply for a different project for each program, if applying to multiple programs currently available.
- Incomplete application submissions will not be considered.
- Applications will not be accepted after October 28, 2021 at 10:00am
- Park Data Inventory must be updated at <https://LAParksPortal.org>
 - Deadline: May 27, 2021 at 12:00pm
- Any questions regarding the grant program must be submitted in accordance with the questions from applicant section.



Application Filing Period:

Opens: April 30, 2021

Closes: October 28, 2021 at 10:00am

Guidelines

Guidelines pg. 5-7



Eligible Applicants

- **Public Agencies**
 - Governmental Agencies
 - Special Districts
 - Joint Powers Authorities (JPAs)
- **Nonprofit Organizations**
 - Mission statement must be related to one or more RPOSD approved focus area
- **Schools**
 - Public and private nonprofit schools are eligible to apply



Guidelines

Guidelines pgs. 7



Additional Registration Requirements

- Review and Accept RPOSD Grant Agreement Terms
- Provide recent financial statement
- Supply federal tax ID
- Have an LA County Vendor ID
- Enroll in Direct Deposit



Guidelines

Guidelines pg. 7



Questions from Applicants

- Submit in the workshop chat
- Submit via email:
 - **info@rposd.lacounty.gov**
 - Identify the Program in the subject line
- RPOSD will publish FAQ to website:
<https://rposd.lacounty.gov>
- Must be submitted by September 30, 2021



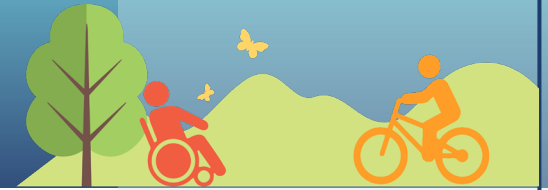


Competitive Grant Funding Programs Overview:

- Natural Lands, Local Beach, Water Conservation and Protection
Available Now!
- Regional Recreation, Multi-use Trails and Accessibility
Available Now!
- Acquisition-Only
Available Now!



RPOSD Resources



Grants Management System (GMS):

<https://grantfunding.rposd.lacounty.gov>

- Link to RPOSD website
- Agencies and Staff must be registered
- All applications must be submitted via the GMS
- Quick Start Guide
- Registration Workshop Video
- GMS Walk-through Video

LOS ANGELES COUNTY REGIONAL PARK AND OPEN SPACE DISTRICT

System Compatibility

Log In

User ID: *

Password: *

Log In


[Forgot User ID?](#)

[Forgot Password?](#)

New to RPOSD - WebGrants?
[Register Here](#)

Announcements

Welcome to the RPOSD WebGrants online Grants Management System.



[Click Here](#) for resources regarding this Grants Management System (GMS), including:

- [Quick Start Guide](#) - Print guide with information on using the GMS to apply for, manage, and close grants organized by Measure A Programs.
- [Registration Workshop Video](#) - Watch RPOSD's Measure A Registration Webinar.
- [GMS Walk-through Video](#) - Video demonstration for first-time users of this online system.

Competitive Grant Programs Available NOW!

- [Natural Lands, Local Beaches, Water Conservation & Protection Guidelines](#)
- [Regional Recreation Facilities, Multi-use Trails and Accessibility Guidelines](#)
- [Acquisition-Only Guidelines](#)

RPOSD Resources



Website

- <https://rposd.lacounty.gov>

Applicant Resources

- Access the GAM
- Access the Competitive Grants Programs page
- Access the programs Guidelines



Technical Assistance Program (TAP)



Goals

- Ensure all Study Areas are well informed regarding available Measure A resources
- Maximize participation in Measure A from park 'High-Need' or 'Very-High-Need' communities by providing proactive and flexible technical assistance throughout the grant continuum

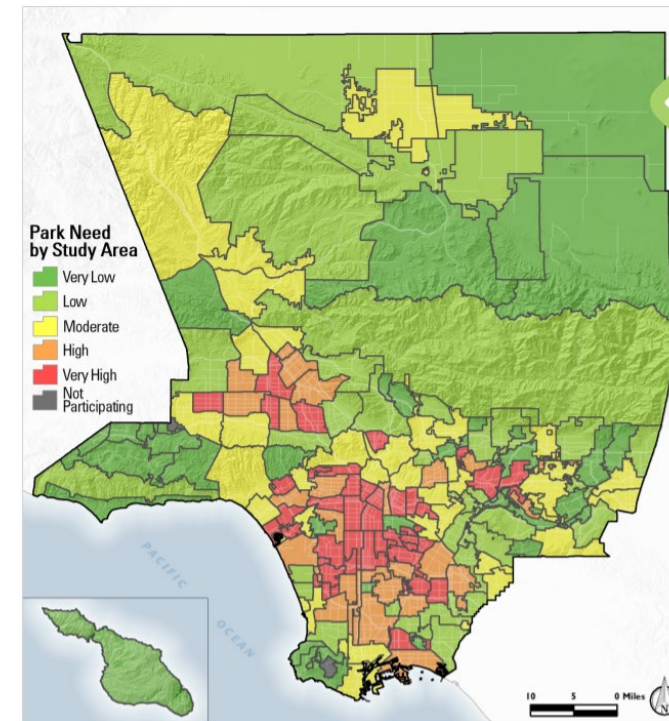
Scope

- Grantmaking Support
 - Information & Resources, including RPOSD website, Grants Officers, Workshops, Toolkits
- Services
 - Curated Professional Consultant Services*
 - Planning and Design*

*For eligible projects that serve PNA Study Areas designated as High or Very High Park Need

For More Information

- Visit <https://rposd.lacounty.gov/TAP-resources/>
- See Section 2.4 of the Grants Administration Manual
- Questions? Contact TAP@rposd.lacounty.gov



Competitive Grant Programs Timeline



- **Application Process Opens:**
April 30, 2021
- **Workshops:**
May 12, 2021 ~ 2PM
June 9, 2021 ~ 10AM
- **Question and Answer Submission Period:**
Opens: April 30, 2021
Closes: September 30, 2021
- **Questions and Answers Posted to Website:**
Ongoing
- **Application Submitted By:**
October 28, 2021 ~ 10AM
- **Award of Funds/Grants:**
January 2022 (tentative)



Competitive Grant Programs Timeline



Administrative Review

- Once the application period has closed on **October 28 at 10AM**, **RPOSD staff** will conduct an administrative review of all submitted applications
- **The names of grantees** who will receive funding for their projects **will be announced** through various media outlets.
- Grants will be **awarded January 2022 (tentative)**.



Natural Lands, Local Beach, Water Conservation and Protection

Guidelines pg. 8



PROGRAM GOALS

- Natural Lands, Local Beaches, Water Conservation and Protection General Competitive Program projects should improve and protect open space, watersheds, and water resources through acquisition, development, improvements, and restoration of multi-benefit parks.



Natural Lands, Local Beach, Water Conservation and Protection

Guidelines pgs. 8-9



Project Types

List of project types that may be eligible for grant funds include:

- **Natural Lands/Open Spaces**
 - Scenic Vistas
 - Habitat gardens
- **Local Beaches**
 - Pier/dock improvements
 - Active recreation amenities
- **Water Conservation and Protection**
 - Permeable walkways
 - Stormwater capture and other water recycling



Natural Lands, Local Beach, Water Conservation and Protection

Guidelines pgs. 9-10



Project Requirements

Applicants must provide proof that the project meets the project eligibility, feasibility, and community engagement requirements listed below:

- **Project Eligibility**
 - Must meet ALL eligibility requirements
- **Project Feasibility**
 - Must meet at least one requirement in each topic area
 - Land Access/Tenure
 - Planning and Design Status
 - Permitting and CEQA Compliance
 - Adverse Site Conditions
- **Community Engagement**



Natural Lands, Local Beach, Water Conservation and Protection

Guidelines pg. 11



Available Funding

- **Program Funding**
 - Total: **\$14.1 Million**
- **RPOSD Award Size**
 - Min: **\$50,000**
 - Max: **\$1,000,000**
- **TOTAL Project Cost Brackets (all funding sources)**
 - Small: **\$50,000 - \$749,999**
 - Medium: **\$750,000 - \$1,999,999**
 - Large: **\$2,000,000 - \$4,999,999**
 - Jumbo: **\$5,000,000 +**
- **30% of funds set aside** for High-Need or Very-High-Need Study Areas;
70% of funds available to all Study Areas



Natural Lands, Local Beach, Water Conservation and Protection

Guidelines pgs. 16-22



Evaluation Criteria

- **Level of Need – 10 Points Max.**
 - Level of need is based on the current countywide PNA determination projects located within **study areas with high or very high need.**
- **Regional Benefits – 30 Points Max.**
- **Social Multi-benefits – 12 Points Max.**
- **Community Health Multi-benefits – 12 Points Max**
- **Environmental Multi-benefits – 20 Points Max**
- **Connectivity and Accessibility – 10 Points Max**
- **Timeline and Budget Feasibility – 6 Points Max**

ENVIRONMENTAL MULTI-BENEFITS PROJECTS THAT PROVIDE OTHER BENEFITS BESIDES RECREATION THAT RELATE TO ENVIRONMENTAL ISSUES. Projects may receive up to a maximum of 20 points by meeting all of the sub criteria below.	20 MAX.
<i>(A) Water Quality Improvements and Stormwater Capture and Conservation</i> Project includes features to improve water quality which go beyond those required by State and local codes. Project includes features to capture stormwater and attenuate potential flood conditions which go beyond those required by State and local codes. Examples include swales, rain gardens, retention basins, pervious pavement, use of drought-tolerant plants, use of drip irrigation, and other ways to use recycled water and reduce runoff.	0-5
<i>(B) Air Quality Improvements and Greenhouse Gas (GHG) Reductions, including Carbon Sequestration</i> Project includes features to reduce existing criterion air pollutant emissions that go beyond those required by current regulations. Project includes features to reduce existing GHG emissions that go beyond those required by current regulations and features to sequester carbon that go beyond typical plantings found in park and open space projects. Examples include tree planting, low allergen palette selection, active transportation options, and sustainable maintenance of amenities.	0-5
<i>(C) Heat-Island Reductions</i> Project includes features to reduce heat-island effects, in ways that go beyond typical plantings found in park and open space projects. Examples include use of light colored and/or reflective surfaces, planting trees, providing shade, and reducing hardscape.	0-5
<i>(D) Habitat Protection and Biodiversity</i> Project includes features to create, preserve, and/or enhance important habitat areas and biodiversity. Examples include preserving critical habitat areas, using native plants that attract pollinators, and creating a diversity of spaces that can be used as habitat for a diversity of animals.	0-5

Natural Lands, Local Beach, Water Conservation and Protection

Guidelines pg. 23

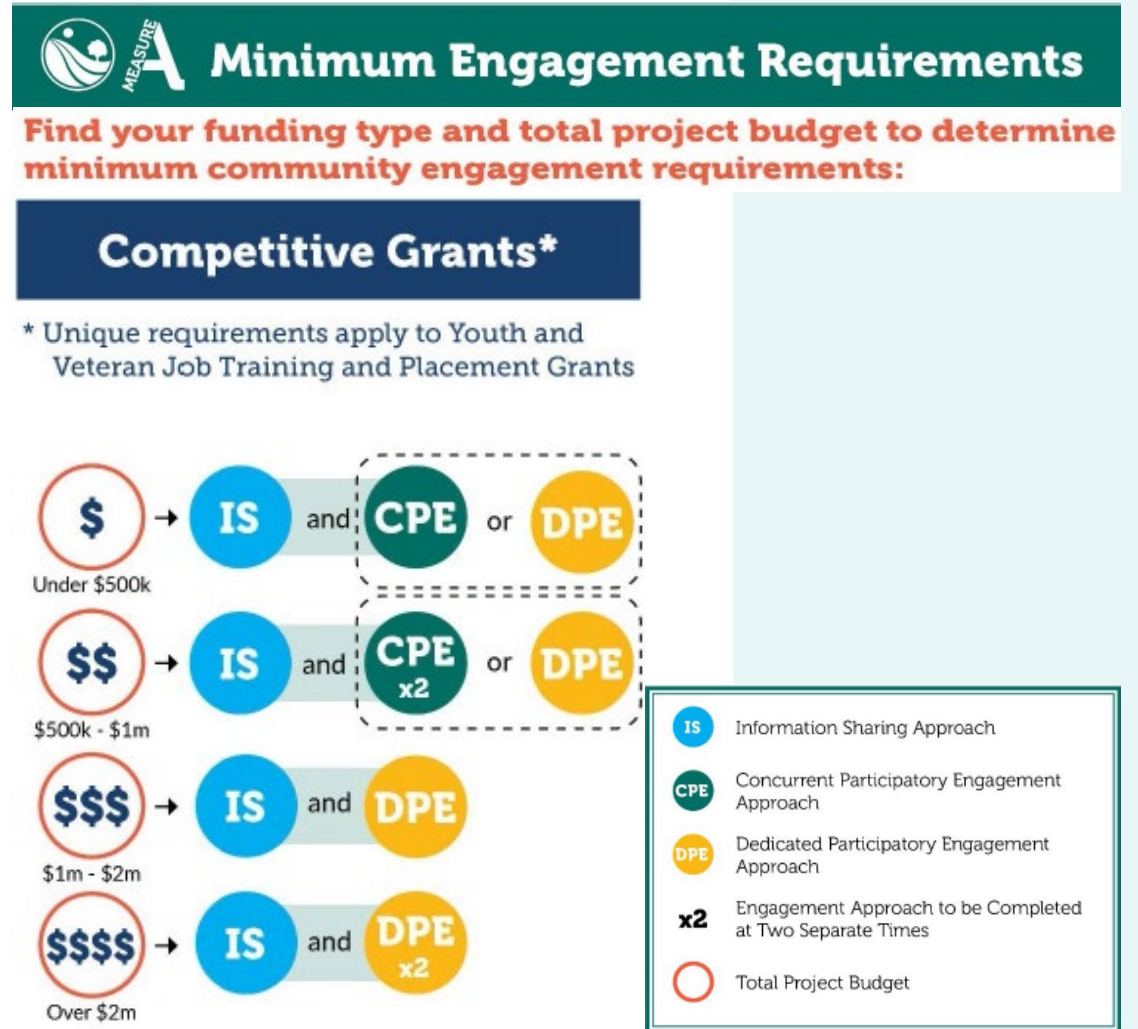


Community Engagement

- RPOSD recognizes the importance of robust and inclusive community outreach and engagement that actively seeks the input of the public when determining how to utilize Measure A funds.
- Measure A requirements for Community Outreach and Engagement remain in effect. Identify best practices and ask your peers for help in developing, planning, and conducting your engagement.

- **Recommendation:**

RPOSD highly recommends completing community outreach and engagement PRIOR to the submission of an application.



Questions?



Regional Recreation Facilities, Multi-use Trail and Accessibility

Guidelines pgs. 8



PROGRAM GOALS

- Regional Recreation Facilities, Multi-use Trails and Accessibility Competitive Grants Program projects should improve, connect and protect regional recreational facilities, trails and accessibility projects.
- Greater priority will be given to trail and accessibility projects that connect river, mountain, and urban areas, especially to County Parks, State Parks, the National Forest, the National Recreation Area(s), and the National Monument(s), and that link other canyons and regional and local parks throughout the County.



Regional Recreation Facilities, Multi-use Trail and Accessibility

Guidelines pg. 8-9



Project Types

List of projects types that may be eligible for grant funds include:

- **Regional Recreational Facilities**
 - Multi-use Sports Facilities
 - Equestrian staging areas
- **Multi-use Trails** – A path or trail which accommodates at least two modes of two-way non-motorized travel (including pedestrian, bicyclists, or equestrians).
 - Upgrades to existing multi-use trails
- **Accessibility**
 - General trail and walkway repairs or improvements
 - Pathways and trails to parks & recreation facilities, open space, natural lands, or beaches.
 - Interactive wayfinding



Regional Recreation Facilities, Multi-use Trail and Accessibility

Guidelines pg. 9-10



Project Requirements

Applicants must provide proof that the project meets the project eligibility, feasibility, and community engagement requirements listed below:

- **Project Eligibility**
 - Must meet ALL eligibility requirements
- **Project Feasibility**
 - Must meet at least one requirement in each topic area:
 - Land Access/Tenure
 - Planning and Design Status
 - Permitting and CEQA Compliance
 - Adverse Site Conditions
- **Community Engagement**



Regional Recreation Facilities, Multi-use Trail and Accessibility

Guidelines pgs. 10-11



Available Funding

- **Program Funding**
 - Total: **\$11.1 Million**
- **RPOSD Award Size**
 - Min: **\$50,000**
 - Max: **\$1,000,000**
- **Total Project Cost Brackets (including other funding sources)**
 - Small: **\$50,000 - \$749,999**
 - Medium: **\$750,000 - \$1,999,999**
 - Large: **\$2,000,000 - \$4,999,999**
 - Jumbo: **\$5,000,000 +**
- **30% of funds set aside** for High-Need or Very-High-Need Study Areas;
70% of funds available to all Study Areas



Regional Recreation Facilities, Multi-use Trail and Accessibility

Guidelines pgs. 16-22



Evaluation Criteria

- **Level of Need – 10 Points Max.**
 - Level of need is based on the current countywide PNA determination projects located within **study areas with high or very high need.**
- **Regional Benefits – 15 Points Max.**
- **Social Multi-benefits – 12 Points Max.**
- **Community Health Multi-benefits – 10 Points Max**
- **Environmental Multi-benefits – 16 Points Max**
- **Connectivity and Accessibility – 30 Points Max**
- **Timeline and Budget Feasibility – 7 Points Max**

ENVIRONMENTAL MULTI-BENEFITS PROJECTS THAT PROVIDE OTHER BENEFITS BESIDES RECREATION THAT RELATE TO ENVIRONMENTAL ISSUES. Projects may receive up to a maximum of 16 points by meeting all of the sub criteria below.	16 MAX.
(A) <i>Water Quality Improvements and Stormwater Capture and Conservation</i> Project includes features to improve water quality which go beyond those required by State and local codes. Project includes features to capture stormwater and attenuate potential flood conditions which go beyond those required by State and local codes. Examples include swales, rain gardens, retention basins, pervious pavement, use of drought-tolerant plants, use of drip irrigation, and other ways to use recycled water and reduce runoff.	0-4
(B) <i>Air Quality Improvements and Greenhouse Gas (GHG) Reductions, including Carbon Sequestration</i> Project includes features to reduce existing criterion air pollutant emissions that go beyond those required by current regulations. Project includes features to reduce existing GHG emissions that go beyond those required by current regulations and features to sequester carbon that go beyond typical plantings found in park and open space projects. Examples include tree planting, low allergen palette selection, active transportation options, and sustainable maintenance of amenities.	0-4
(C) <i>Heat-Island Reductions</i> Project includes features to reduce heat-island effects, in ways that go beyond typical plantings found in park and open space projects. Examples include use of light colored and/or reflective surfaces, planting trees, providing shade, and reducing hardscape.	0-4
(D) <i>Habitat Protection and Biodiversity</i> Project includes features to create, preserve, and/or enhance important habitat areas and biodiversity. Examples include preserving critical habitat areas, using native plants that attract pollinators, and creating a diversity of spaces that can be used as habitat for a diversity of animals.	0-4

Regional Recreation Facilities, Multi-use Trail and Accessibility

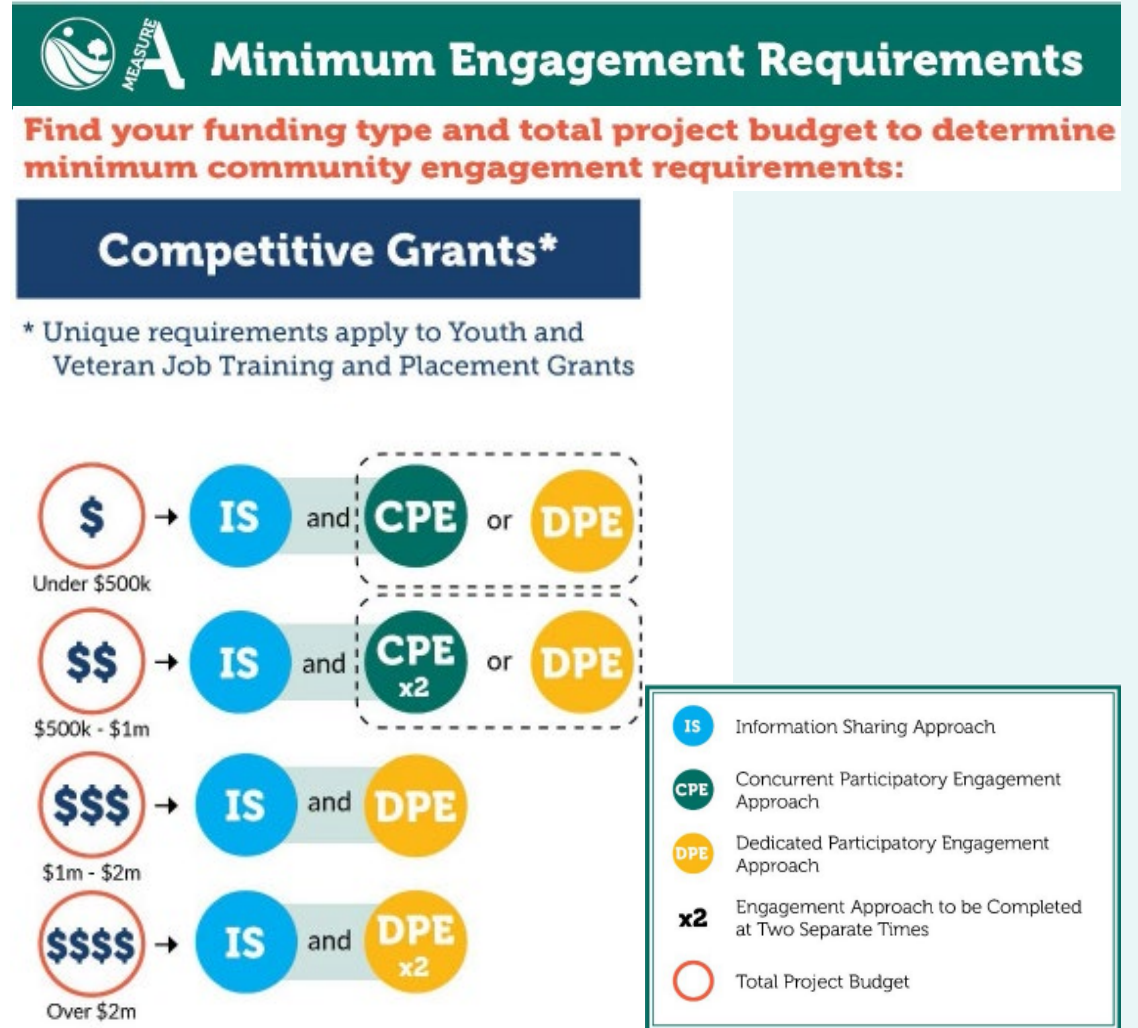
Guidelines pg. 23-27



Community Engagement

- Effective Outreach and Engagement should rely on the use of social media and virtual technology. These tools provide a range of opportunities to inform, connect, and follow up with your target community. Consider that many communities and target groups do not have access or use internet-based social media tools or are not comfortable with their use.
- Engagement requirements may occur no more than 36 months before the application date.
- Only costs incurred after agreement execution are eligible for reimbursement.
- Follow Language Requirements to provide level of translation and interpretation services based on % of linguistically isolated population speaking a given language within a given Study Area.
- Follow social gathering Health and Safety guidelines as per the LACO Health Department.
- **Recommendation:**

RPOSD highly recommends completing community outreach and engagement PRIOR to the submission of an application.



Questions?



Acquisition-Only

Guidelines pgs. 7



PROGRAM GOALS

- To acquire lands that meets the need of:
 - Natural Lands, Local Beaches, Water Conservation and Protection Competitive Grants Program
 - Regional Recreation, Multi-use Trails and Accessibility Competitive Grants Program



Acquisition-Only



Project Requirements

Applicants must provide proof that the project meets the project eligibility, feasibility, and community engagement requirements listed below:

- **Project Eligibility**
 - Must meet ALL eligibility requirements
- **Project Feasibility**
 - Must meet at least one requirement in each topic area
 - Land Access/Tenure
 - CEQA Compliance
 - Adverse Site Conditions
- **Community Engagement**



Acquisition-Only

Guidelines pgs. 9



Available Funding

- **Program Funding**
 - Total: **\$8.2 Million**
- **RPOSD Award Size**
 - Min: **\$50,000**
 - Max: **\$1,000,000**
- **Total Project Cost Brackets (including other funding sources)**
 - Small: **\$50,000 - \$749,999**
 - Medium: **\$750,000 - \$1,999,999**
 - Large: **\$2,000,000 - \$4,999,999**
 - Jumbo: **\$5,000,000 +**
- **30% of funds set aside** for High-Need or Very-High-Need Study Areas;
70% of funds available to all Study Areas



Acquisition-Only

Guidelines pgs. 14-17



Evaluation Criteria

- **Level of Need – 20 Points Max.**
 - Level of need is based on the current countywide PNA determination projects located within **study areas with high or very high need.**
- **Regional Benefits – 25 Points Max.**
- **Social Multi-benefits – 10 Points Max.**
- **Environmental Multi-benefits – 10 Points Max**
- **Connections and Access – 25 Points Max**
- **Timeline and Budget Feasibility – 10 Points Max**

SOCIAL MULTI-BENEFITS PROJECTS THAT PROVIDE OTHER BENEFITS BESIDES RECREATION THAT RELATE TO SOCIAL ISSUES.	10 MAX.
<i>Anti-displacement Mitigation</i> Project will include advance displacement avoidance strategies to prevent displacement if a potential unintended consequence associated with the project creates a significant increase in the cost of housing. More points will be scored based on how realistic and proactive the strategies are.	0-10
ENVIRONMENTAL MULTI-BENEFITS PROJECTS THAT PROVIDE OTHER BENEFITS BESIDES RECREATION THAT RELATE TO ENVIRONMENTAL ISSUES. Projects may receive up to a maximum of 10 points by meeting all of the sub criteria below.	10 MAX.
<i>(A) Heat-Island Reductions</i> Project includes features to reduce heat-island effects, in ways that go beyond typical plantings found in park and open space projects. Examples include use of light colored and/or reflective surfaces, planting trees, providing shade, and reducing hardscape.	0-5
<i>(B) Habitat Protection and Biodiversity</i> Project acreage includes important habitat areas and biodiversity. Examples include preserving critical habitat areas, and creating a diversity of spaces that can be used as habitat for a diversity of animals.	0-5

Acquisition-Only



Community Engagement

- These projects may need a unique approach considering confidentiality, urgency, and other legal parameters.
- Applicants should carefully consider the project dynamics and engage the community as soon as possible
- Suitable accounting systems must be intact and available for auditing at any time.

Recommendation:

- RPOSD highly recommends completing community outreach and engagement PRIOR to the submission of an application



Minimum Engagement Requirements

Find your funding type and total project budget to determine minimum community engagement requirements:

Competitive Grants*

* Unique requirements apply to Youth and Veteran Job Training and Placement Grants



Questions?



Action Items



Next Steps for Applicants:

- Utilize the Competitive Grants Programs webpage at <https://RPOSD.LACounty.gov>
- Read the Guidelines for your Competitive Grant Program
- Register in the GMS at <https://grantfunding.rposd.lacounty.gov>
- Complete Community Outreach and Engagement
- Utilize Checklist in the appendix of the guidelines to gather documents
- Ensure your agency is in Good Standing with RPOSD





Thank You



Los Angeles County
Regional Park and Open Space District

Email: info@rposd.lacounty.gov
Phone: 626.588.5060
Website: RPOSD.LACounty.gov

