

2021 Annual Report



**LOS ANGELES COUNTY
REGIONAL PARK AND
OPEN SPACE DISTRICT**

Letter from the Director

Here at the Regional Park and Open Space District, Fiscal Year 2020/2021 meant carrying on the important work of implementing voter-approved Measure A. With the ongoing pandemic highlighting not just the value of parks but also the disparities in access to green spaces, we were eager to release important funding for the communities of Los Angeles County.

The release of the first-ever cycle of three Measure A competitive grant programs totaling \$33.4 million occurred in April. In Measure A's unwavering commitment to addressing park inequity, a minimum of 30% of this funding shall be dedicated to projects in communities with high/very high park need. In addition to the release of the competitive grant funds, RPOSD continued its annual dispersing of Measure A dollars to fund park investments in Los Angeles County. In Fiscal Year 2020-2021 alone, nearly \$49 million was allocated, and since the 2016 passage of Measure A, RPOSD has allocated over \$186 million across Los Angeles County.

RPOSD launched professional consultant services as part of the Technical Assistance Program (TAP). We developed lists of Qualified Vendors in different areas of expertise from parkland development consultants who applied to the ongoing solicitation released in February. TAP will fund this service exclusive to high/very high park need entities to assist these communities with the highest park need in developing park projects and successful applications for Measure A competitive grant programs.

In addition to the work that we have accomplished, we are excited for the significant work that's on the horizon, including the release of the Recreation Access and Youth & Veteran Job Training and Placement competitive grant programs, and the awarding of several millions of dollars in grant funding for the Natural Lands, Local Beaches, Water Conservation and Protection; Regional Recreation Facilities, Multi-Use Trails, and Accessibility; and Parkland Acquisition competitive grant programs.

We remain grateful to the voters who passed the Los Angeles County Safe, Clean Neighborhood Parks and Beaches Measure, and to the local property taxpayers who fund this important Measure. Finally, we remain committed to all Los Angeles County constituents to administer Measure A with transparency and integrity.

Sincerely,



Norma E. García-González, Director
Los Angeles Regional Park and Open Space District

Core Content

A Year In Review.....	4
Measure A Revenue Collected for 2021.....	6
A Look Ahead.....	7

Appendices

- I : Measure A Allocation July 2020 - June 2021
- II : Measure A Park Investments July 2020 - June 2021
- III : Proposition A 2021 Plan of Revenue Expenditure



Regional Park and Open Space District

The Los Angeles Regional Park and Open Space District (RPOSD) was created with the passage of Proposition A in 1992 and continues its mission **“to enrich and empower the communities of Los Angeles County through innovative grantmaking for parks and open space”** with the approval of Measure A in 2016 by the voters of Los Angeles County. RPOSD is a special district whose boundaries are the same as the County of Los Angeles and the County’s Board of Supervisors serve as its Board of Directors. RPOSD’s mandate is to collect taxes within the boundaries (as approved by nearly 75% of voters) and to grant out funds to the County’s 88 cities, local park agencies and non-profits for improving, refurbishing and creating new park projects.



The District’s Board of Directors

Hilda L. Solis
Supervisory District 1

Holly J. Mitchell
Supervisory District 2

Sheila Kuehl
Supervisory District 3

Janice Hahn
Supervisory District 4

Kathryn Barger
Supervisory District 5

A Year In Review

Fiscal Year 2020/2021 was a monumental year for the Regional Park and Open Space District. In its ongoing implementation of voter-approved Measure A, RPOSD's efforts culminated in the launch of key elements.

- ❖ The LA Parks Portal went live on November 30, 2020. The innovative portal will serve as a vital tool to track park inventory in Los Angeles County. Entities that own/manage parks must provide updates on their parks on an annual basis. The data from the portal will be utilized in the update of the Countywide Comprehensive Parks & Recreation Needs Assessment scheduled for 2025.



- ❖ On February 16, 2021, RPOSD released a Request for Statements of Qualification as a mechanism to procure professional consulting services for the Technical Assistance Program. The solicitation will remain open for several years as a means to qualify vendors who will provide technical assistance to the entities that need it most. In line with the equity-focused vision of Measure A, the professional consulting services are geared toward projects serving high/very high park need study areas.

- ❖ In Spring 2021, RPOSD released edits to the Measure A Grants Administration Manual to reflect the improvement opportunities noted by the Los Angeles County Auditor-Controller. The revisions reflected RPOSD's commitment to responsibly administer taxpayer-funded grants.
- ❖ April 30, 2021 marked the first-ever opening of the Measure A competitive grants programs for three programs:
 - » **Natural Lands, Local Beaches, Water Conservation and Protection**
 - » **Regional Recreation Facilities, Multi-use Trails and Accessibility**
 - » **Acquisition-Only**

With \$33 million in funding at stake, RPOSD hosted workshops, sent email blasts, and ran a social media campaign to spread the word about the significant opportunity for park development across Los Angeles County.



MAINTENANCE & SERVICING

Formula-based allocations for maintenance and servicing of grant-funded projects.

PROGRAM INNOVATION & OVERSIGHT

Needs Assessment updates, innovative technologies, and operations of RPOSD.

CATEGORY 5

Youth and Veteran Job Training and Placement Opportunities Program
Grants, to be awarded through a competitive process

CATEGORY 1

Community-Based Park Investment Program
Formula-based allocations of funds for grants to each Study Area.*

CATEGORY 4

Regional Recreational Facilities, Multi-use Trails, and Accessibility Program
Grants, to be awarded through a competitive process.

CATEGORY 2

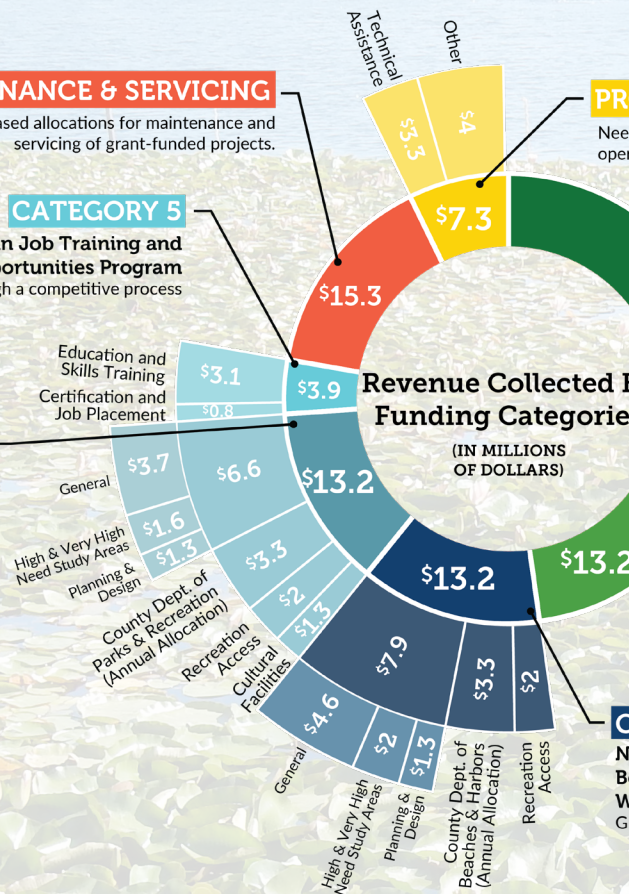
Safe, Clean Neighborhood Parks, Healthy Communities, and Urban Greening Program
Formula-based allocations of funds for grants to High and Very-High Need Study Areas.

CATEGORY 3

Natural Lands, Open Spaces and Local Beaches, Water Conservation, and Watersheds Protection Program
Grants, to be awarded through a competitive process.

Revenue Collected By Funding Categories

(IN MILLIONS OF DOLLARS)



MEASURE A REVENUE COLLECTED \$104M for 2021

Note: The District's Board of Directors may allocate up to 2% of total funds for eligible projects each year (up to \$2.1M total for 2021*).

*Refer to Appendix I for further details on revenue collection, allocation, and expenditure.

A Look Ahead...

RPOSD has many exciting developments geared for Fiscal Year 2021-2022, including:

- ❖ Announcement of RPOSD competitive grant awards for Natural Lands, Local Beaches, Water Conservation and Protection; Regional Recreation Facilities, Multi-use Trails and Accessibility; and Acquisition Only
- ❖ Additional updates to the Grants Administration Manual
- ❖ The RPOSD team will be gaining an Assistant District Administrator
- ❖ Release of Recreation Access and Youth & Veteran Job Training and Placement competitive grant programs
- ❖ Adoption of bylaws to govern the Measure A Citizens Oversight Advisory Board



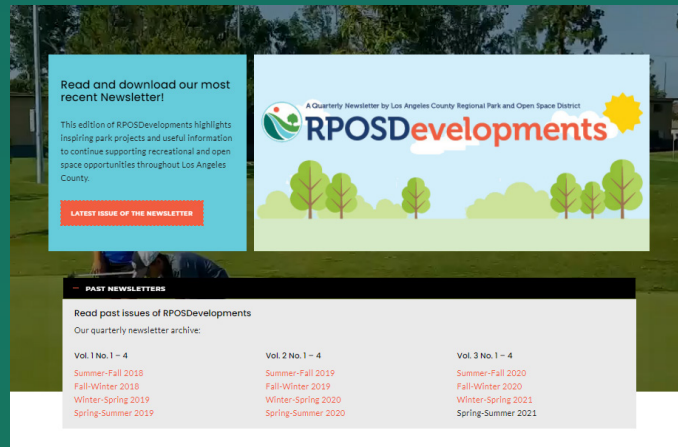
RPOSD adhering to COVID-19 safety guidelines outdoors at the 2021 Staff Retreat (Vincent Lugo Park, City of San Gabriel)



Subscribe to *RPOSD*Developments

Our quarterly newsletters highlight inspiring park projects and useful information to continue supporting recreational and open space opportunities throughout Los Angeles County.

<https://rposd.lacounty.gov/newsletter/>



Have an idea for or a concern about your neighborhood parks?

RPOSD is a granting agency and does not own or operate any parks or facilities. If you have questions about your favorite park or recreational amenity, we recommend contacting the agency who owns and operates that facility.

It is very likely that your local leadership or direct open space representative overseeing your community or park of interest is already a Grantee of RPOSD. You can contact us directly to inquire about the best contact for your cause.

<https://rposd.lacounty.gov/contact-us/>

Share A Park Story

Do you remember running around the jungle gym at the neighborhood park?

Have you or your pup made new pals at the dog park?

Do you enjoy riding your bike in the sunshine through Los Angeles County's beautiful trails?

We would love to hear your park story.



Every Park Has Its Stories... ...Tell Us Yours!



Submit a story along with your photo(s) and it may be featured on our newsletter or shared on the website!

<https://rposd.lacounty.gov/our-stories/>





To enrich and empower the communities of Los Angeles County
through innovative grantmaking for parks and open space.



Follow Us On Social Media!



/rposd



@rposd



@rposd



626.588.5060 • info@RPOSD.lacounty.gov • RPOSD.LACounty.gov

Appendix

I

Measure A Allocation

July 2020-June 2021



ANNUAL**FY 2020-2021****REPORT SUMMARY**

	ALLOCATIONS
Operations, Innovation and Oversight	7,347,419
Grant Programs	79,392,939
County Priority Projects	2,082,602
Maintenance and Servicing	15,307,122
Total	\$ 104,130,081

OPERATIONS, INNOVATION AND OVERSIGHT

Operations	4,041,080
Technical Assistance Program (TAP)	3,306,338
Total	\$ 7,347,419

GRANT PROGRAMS

Category 1: Community-Based Park Investment	\$ 35,716,618
Category 2: Neighborhood Parks, Healthy Communities, and Urban Greening	\$ 13,266,172

Category 3: Natural Lands, Local Beaches, Water Conservation and Protection

3.1 LA County Dept. of Beaches and Harbors	3,316,543
3.2 Recreation Accessibility Program (RAP)	1,989,926
3.3 Planning and Design	1,326,617
3.4 Acquisition in High/Very High Need Areas (30%)	477,582
3.5 Acquisition in Other Areas (70%)	1,114,358
3.6 Projects in General Areas (70%)	3,528,802
3.7 Projects in High/Very High Need Areas (30%)	1,512,344
Subtotal	\$ 13,266,172

Category 4: Regional Recreation Facilities, Multi-use Trails and Accessibility

4.1 LA County Dept. of Parks and Recreation	3,316,543
4.2 Recreation Accessibility Program (RAP)	1,989,926
4.3 County Cultural Facilities	1,326,617
4.4 Planning and Design	1,326,617
4.5 Acquisition in High/Very High Need Areas (30%)	397,985
4.6 Acquisition in Other Areas (70%)	928,632
4.7 Projects in Other Areas (70%)	2,785,896
4.8 Projects in High/Very High Need Areas (30%)	1,193,956
Subtotal	\$ 13,266,172

Category 5: Youth and Veteran Job Training & Placement

5.1 Education and Skills Training	3,102,243
5.2 Certification and Job Placement	775,561
Subtotal	\$ 3,877,804

Total	\$ 79,392,939
--------------	----------------------

COUNTY PRIORITY PROJECTS

District 1	416,520
District 2	416,520
District 3	416,520
District 4	416,520
District 5	416,520
Total	\$ 2,082,602

MAINTENANCE AND SERVICING

1. Cities	7,783,672
2. LA County Dept. of Beaches and Harbors	1,607,248
3. LA County Dept. of Parks and Recreation	2,066,461
4. LA County Dept. of Public Works	459,214
5. Baldwin Hills Regional Conservation Authority	153,071
6. Los Cerritos Wetlands Authority	76,536
7. Mountains Recreation and Conservation Authority	1,224,570
8. Puente Hills Native Habitat Authority	306,142
9. Santa Clarita Watershed Recreation and Conservation Authority	153,071
10. Watershed Conservation Authority	788,317
11. Other Eligible Nonprofit Organizations	688,820
Total	\$ 15,307,122

SUMMARY

FY 2017-2018 THROUGH FY 2020-2021

REPORT SUMMARY

	ALLOCATIONS	AWARDED	BALANCE
Operations, Innovation and Oversight	28,000,835	2,002,445	25,998,390
Grant Programs	302,564,579	13,668,386	288,896,193
County Priority Projects	7,936,745	854,373	7,082,372
Maintenance and Servicing	58,335,073	15,252,962	43,082,111
Total	\$ 396,837,232	\$ 31,778,165	\$ 365,059,066

OPERATIONS, INNOVATION AND OVERSIGHT

Operations	15,146,460	-	15,146,460
Technical Assistance Program (TAP)	12,854,375	2,002,445	10,851,930
Total	\$ 28,000,835	\$ 2,002,445	\$ 25,998,390

GRANT PROGRAMS

Category 1: Community-Based Park Investment

\$ 136,115,171	\$ 7,500,277	\$ 128,614,893
-----------------------	---------------------	-----------------------

Category 2: Neighborhood Parks, Healthy Communities, & Urban Greening

\$ 50,557,063	\$ 5,560,109	\$ 44,996,955
----------------------	---------------------	----------------------

Category 3: Natural Lands, Local Beaches, Water Conservation & Protection

3.1 LA County Dept. of Beaches and Harbors	12,639,266	608,000	12,031,266
3.2 Recreation Accessibility Program (RAP)	7,583,560	-	7,583,560
3.3 Planning and Design	5,055,706	-	5,055,706
3.4 Acquisition in High/Very High Need Areas (30%)	1,820,054	-	1,820,054
3.5 Acquisition in Other Areas (70%)	4,246,793	-	4,246,793
3.6 Projects in General Areas (70%)	13,448,179	-	13,448,179
3.7 Projects in High/Very High Need Areas (30%)	5,763,505	-	5,763,505
Subtotal	\$ 50,557,063	\$ 608,000	\$ 49,949,063

Category 4: Regional Recreation Facilities, Multi-use Trails and Accessibility

4.1 LA County Dept. of Parks and Recreation	12,639,266	-	12,639,266
4.2 Recreation Accessibility Program (RAP)	7,583,560	-	7,583,560
4.3 County Cultural Facilities	5,055,706	-	5,055,706
4.4 Planning and Design	5,055,706	-	5,055,706
4.5 Acquisition in High/Very High Need Areas (30%)	1,516,712	-	1,516,712
4.6 Acquisition in Other Areas (70%)	3,538,994	-	3,538,994
4.7 Projects in Other Areas (70%)	10,616,983	-	10,616,983
4.8 Projects in High/Very High Need Areas (30%)	4,550,136	-	4,550,136
Subtotal	\$ 50,557,063	\$ -	\$ 50,557,063

Category 5: Youth and Veteran Job Training & Placement

5.1 Education and Skills Training	11,822,575	-	11,822,575
5.2 Certification and Job Placement	2,955,644	-	2,955,644
Subtotal	\$ 14,778,219	\$ -	\$ 14,778,219

Total	\$ 302,564,579	\$ 13,668,386	\$ 288,896,193
--------------	-----------------------	----------------------	-----------------------

COUNTY PRIORITY PROJECTS

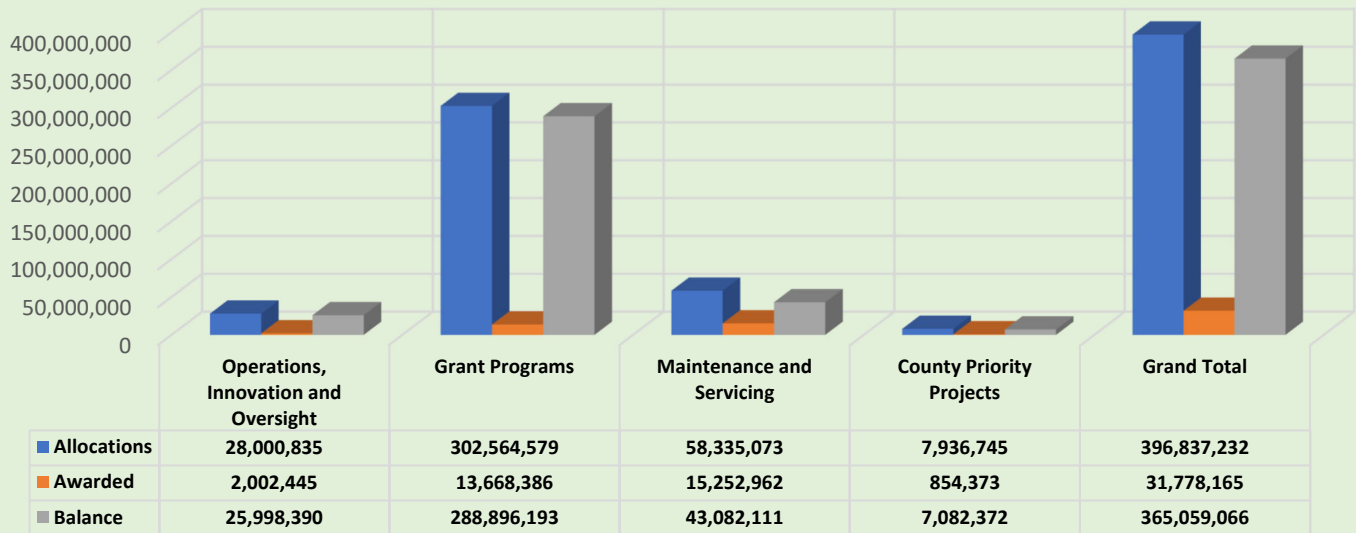
District 1	1,587,349	-	1,587,349
District 2	1,587,349	754,373	832,976
District 3	1,587,349	100,000	1,487,349
District 4	1,587,349	-	1,587,349
District 5	1,587,349	-	1,587,349
Total	\$ 7,936,745	\$ 854,373	\$ 7,082,372

MAINTENANCE AND SERVICING

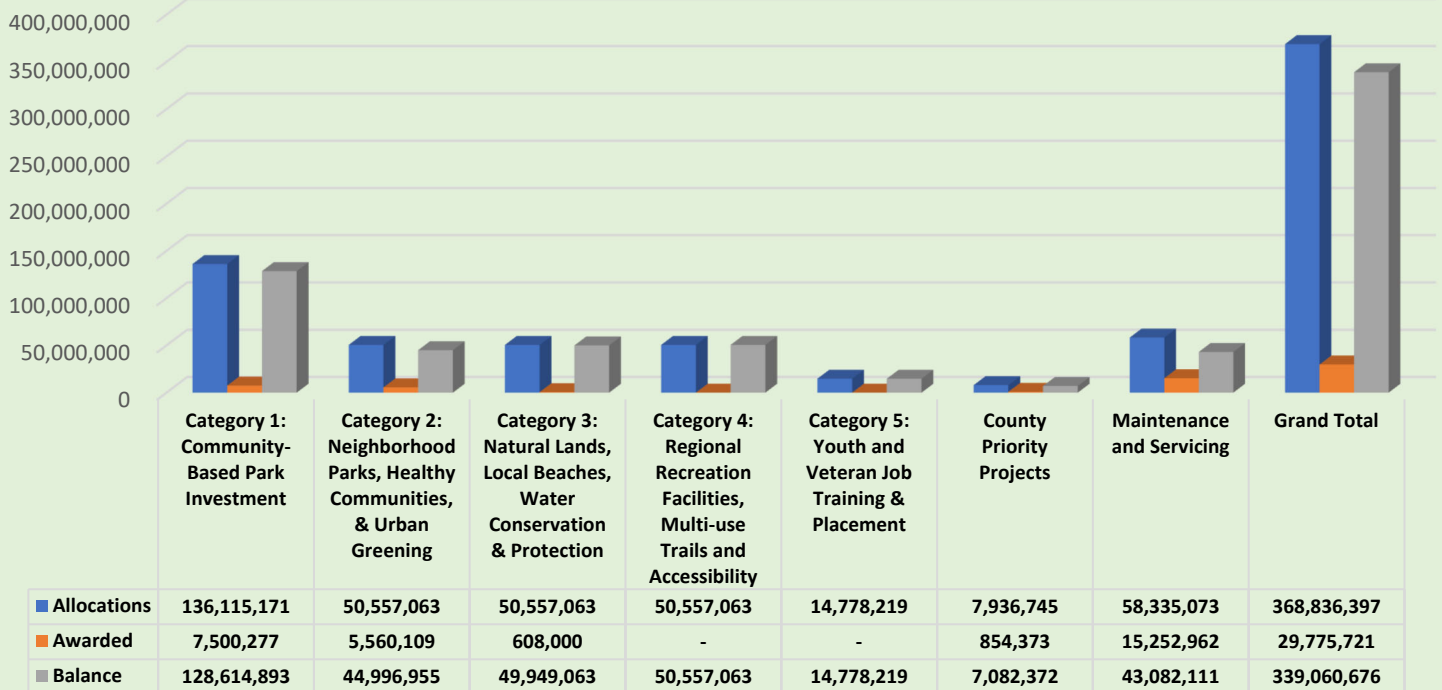
1. Cities	29,663,385	3,881,277	25,782,107
2. LA County Dept. of Beaches and Harbors	6,125,183	-	6,125,183
3. LA County Dept. of Parks and Recreation	7,875,235	5,808,773	2,066,461
4. LA County Dept. of Public Works	1,750,052	-	1,750,052
5. Baldwin Hills Regional Conservation Authority	583,351	-	583,351
6. Los Cerritos Wetlands Authority	291,675	128,495	163,180
7. Mountains Recreation and Conservation Authority	4,666,806	3,371,063	1,295,743
8. Puente Hills Native Habitat Authority	1,166,701	554,464	612,237
9. Santa Clarita Watershed Recreation and Conservation Authority	583,351	430,279	153,072
10. Watershed Conservation Authority	3,004,256	-	3,004,256
11. Other Eligible Nonprofit Organizations	2,625,078	1,078,610	1,546,468

Total	\$ 58,335,073	\$ 15,252,962	\$ 43,082,111
--------------	----------------------	----------------------	----------------------

MEASURE A FUNDING STATUS FY 2017-2018 THROUGH FY 2020-2021



MEASURE A PROGRAMS FY 2017-2018 THROUGH FY 2020-2021



Appendix

II

Measure A Park Investments

July 2020 - June 2021



Introduction

Measure A funding through formula-based allocations and competitive grants ensures that all communities, especially those in High-Need or Very-High Need Study Areas, have resources to invest in continued development, acquisition, improvement, restoration, and maintenance of parks, recreational facilities, and open spaces.

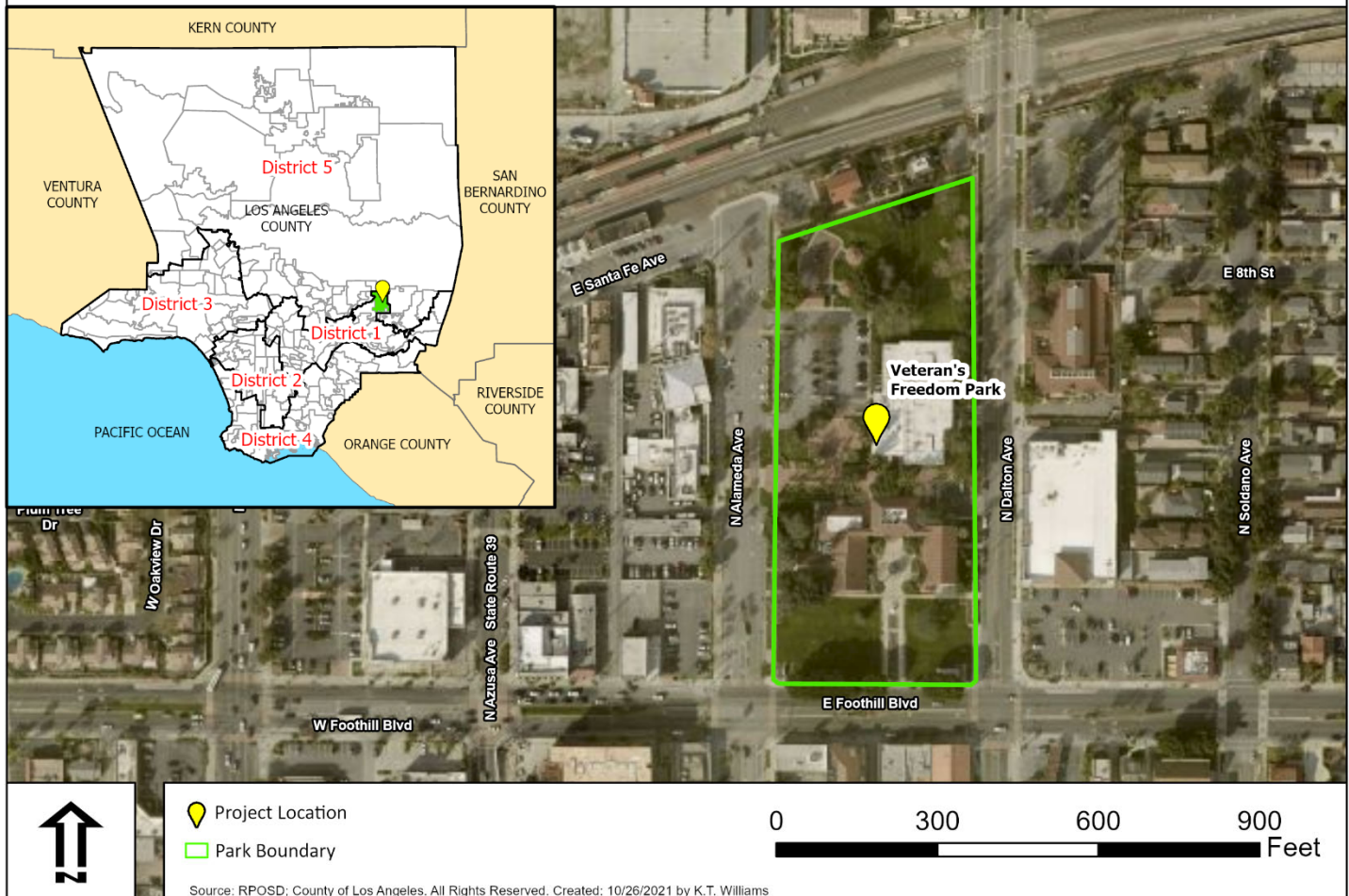
The expenditure of all funds assessed pursuant to Measure A is made transparent to the public through the Los Angeles County Regional Park and Open Space District's (RPOSD) website, annual reports, annual independent financial audits, and the public oversight advisory board. RPOSD is responsible for publishing information about the location, footprint, objective, status, outcome, matching funds used, and the applicable funding programs of each funded project. In Fiscal Year 2020/2021, fourteen (14) projects were awarded grant funds, and one (1) project was completed.


Disclaimer: RPOSD strives to provide the most accurate information; however, changes in grant information may occur over time due to unforeseen events. If you have any questions about this information, please email us at info@rposd.lacounty.gov or contact us at 626-588-5060.

July 2020 to June 2021
Summary of Grants Awarded

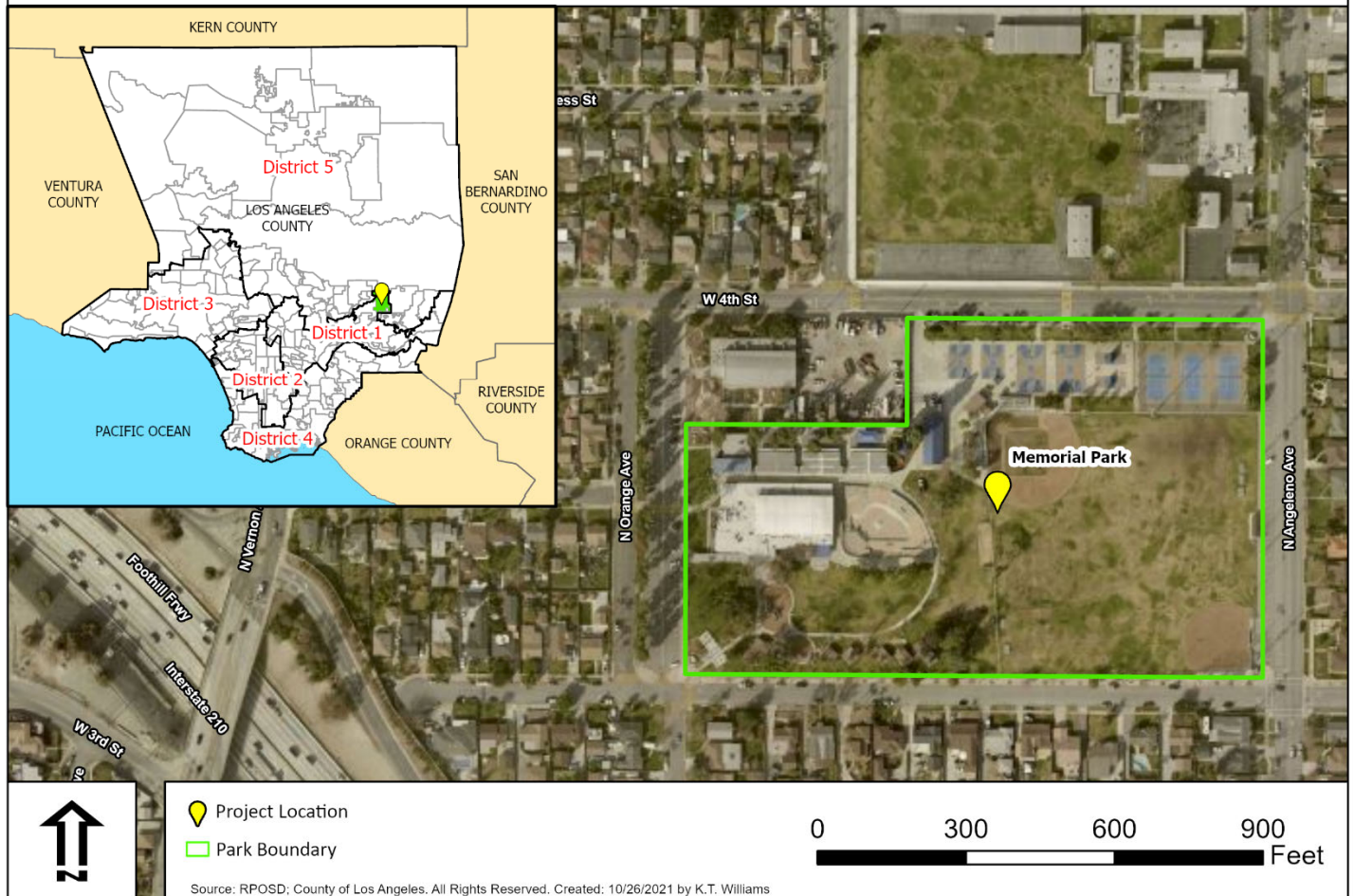
	Study Area ID	Need Level	Grantee	Project	Amount Awarded
1	175	Moderate	City of Azusa	Veteran's Freedom Park Playground Equipment Replacement	\$ 167,277.43
2	175	Moderate	City of Azusa	Memorial Park Playground Equipment Replacement	\$ 220,145.77
3	71	Very High	City of Bell	Plan and Design for Ernest Debs Park Fitness Gym Rehabilitation	\$ 5,883.00
4	171	Low	City of Claremont	Pickleball Court Addition	\$ 33,350.00
5	93	Moderate	City of Covina	Covina Park Playground Replacement	\$ 310,213.30
6	157	Low	City of Diamond Bar	Canyon Loop Trail Improvement	\$ 184,000.00
7	108	High	City of Los Angeles	Queen Anne Recreation Center Playground Replacement	\$ 770,300.00
8	75	Very Low	Los Angeles County – Beaches and Harbors	Surfrider Beach Restroom Refurbishment	\$ 608,000.00
9	70	Very High	Los Angeles County - Parks and Recreation	City Terrace Park Ballfield Lighting Improvements	\$ 624,500.00
10	70	Very High	Los Angeles County - Parks and Recreation	Salazar Park Community Engagement Project	\$ 39,800.00
11	36	Very Low	Los Angeles County - Parks and Recreation	Jackie Robinson Park	\$ 21,471.00
12	20	Moderate	Los Angeles County - Parks and Recreation	Sunshine Park Walking Path Improvements	\$ 75,000.00
13	142	High	Los Angeles Dodgers Foundation	Dodgers Dreamfields at Gonzalez Park	\$ 75,000.00
14	81	Very Low	National Wildlife Federation	Liberty Wildlife Crossing in Agoura Hills	\$ 100,000.00
Total					\$ 3,234,940.50


City of Azusa Veteran's Freedom Park Playground Equipment Replacement Project



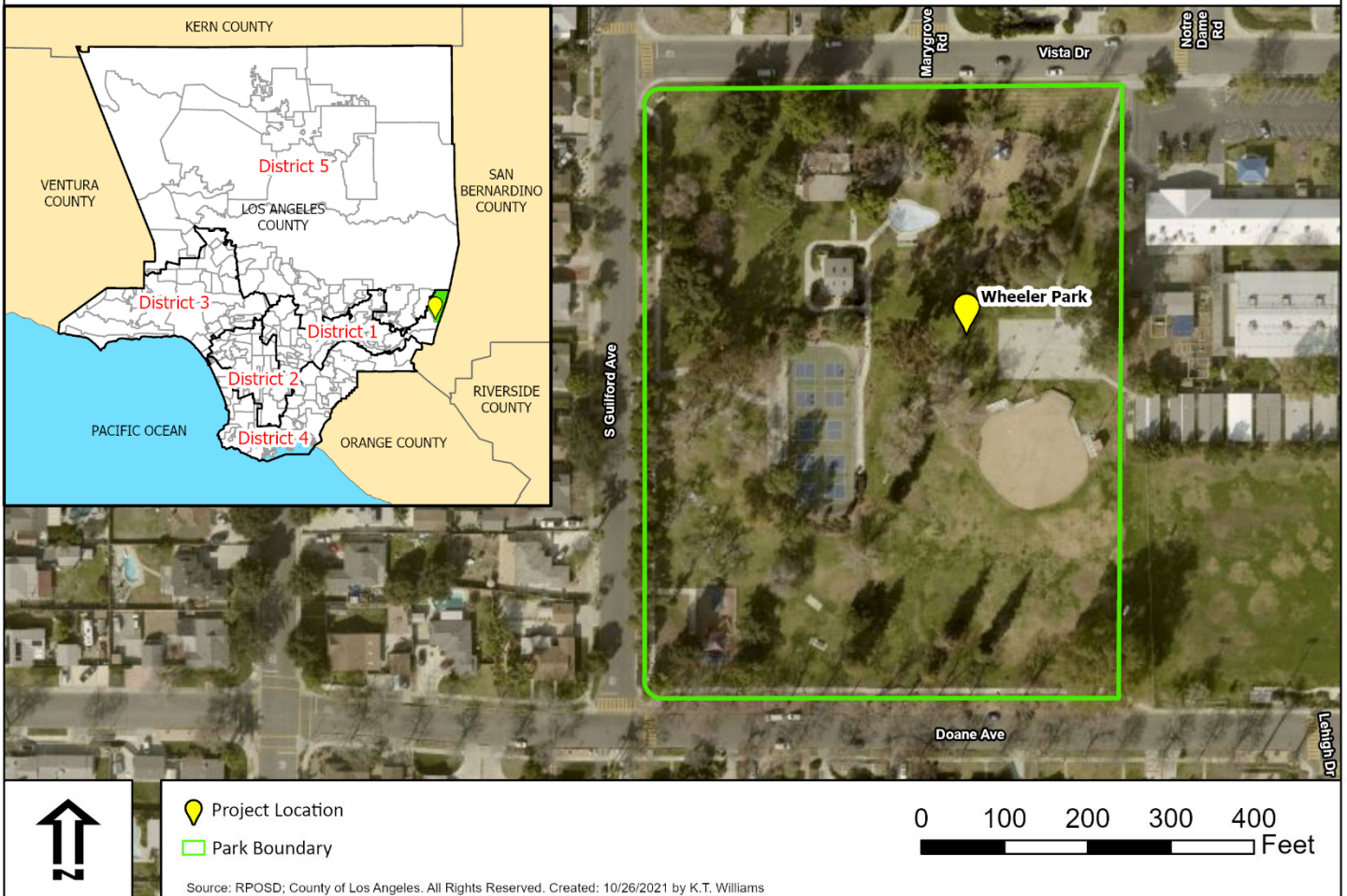
Grantee:	City of Azusa
Location:	213 E. Foothill Boulevard, Azusa, CA 91702
Study Area ID:	175
Need Level:	Moderate
Project Description/Objective:	This project proposes to remove and demolish existing playground equipment. Modern, safety-compliant playground equipment will be put in place.
Status:	Underway
Reported Other Funding Source Total:	N/A
Grant Program:	 Category 1 – Community-Based Park Investment Program
Grant Award Amount:	\$ 167,277.43


City of Azusa Memorial Park Playground Equipment Replacement Project



Grantee:	City of Azusa
Location:	320 N. Orange Place, Azusa, CA 91702
Study Area ID:	175
Need Level:	Moderate
Project Description/Objective:	This project proposes to remove and demolish existing playground equipment. Modern, safety-compliant playground equipment will be put in place.
Status:	Underway
Reported Other Funding Source Total:	N/A
Grant Program:	 Category 1 – Community-Based Park Investment Program
Grant Award Amount:	\$ 220,145.77

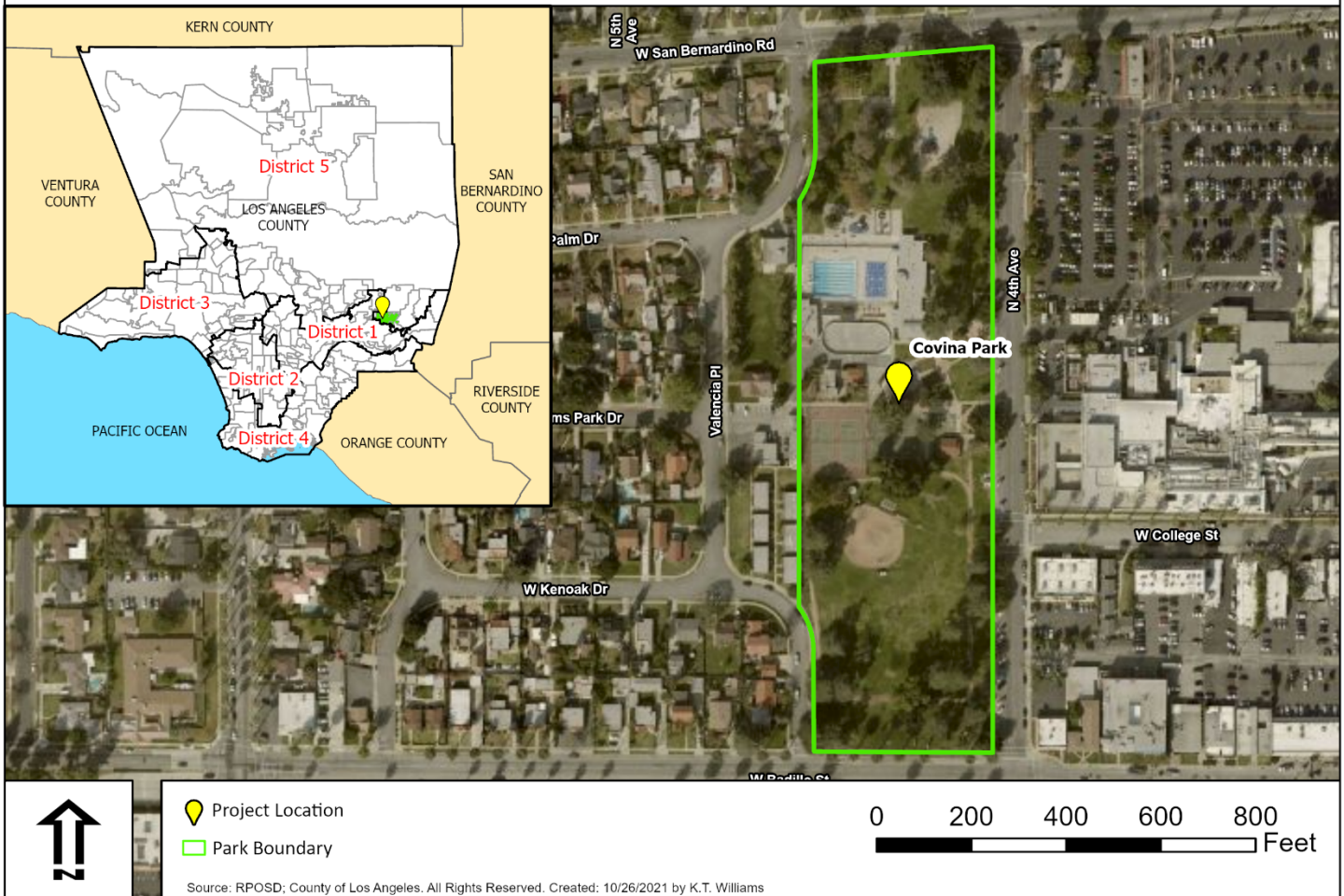
City of Claremont Pickleball Court Addition Project




Grantee:	City of Claremont
Location:	626 Vista Drive, Claremont, CA 91711
Study Area ID:	171
Need Level:	Low
Project Description/Objective:	Conversion of the current roller hockey rink to a pickleball court.
Status:	Underway
Reported Other Funding Source Total:	N/A
Grant Program:	 Category 1 – Community-Based Park Investment Program
Grant Award Amount:	\$ 33,350.00

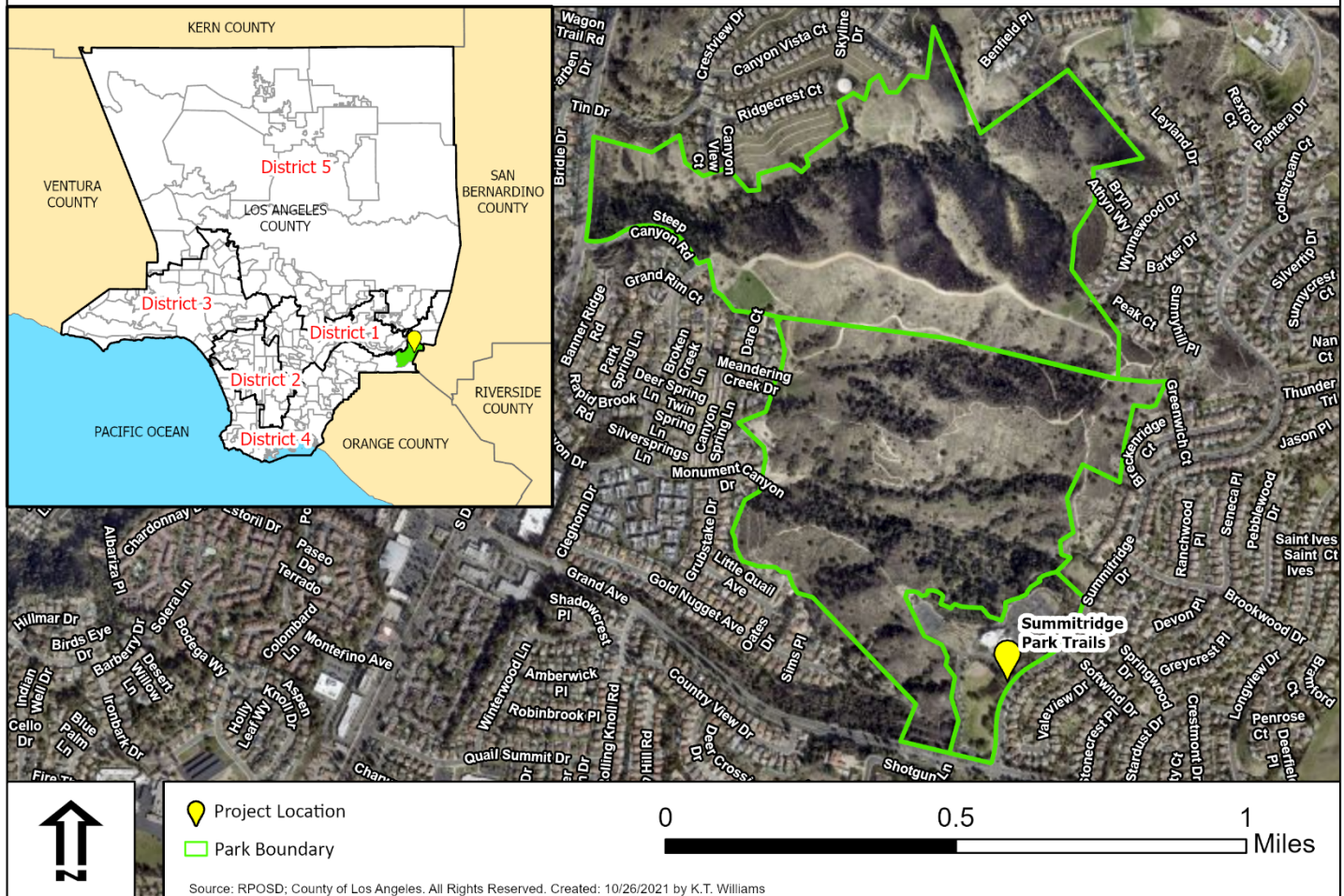



City of Covina Covina Park Playground Replacement Project



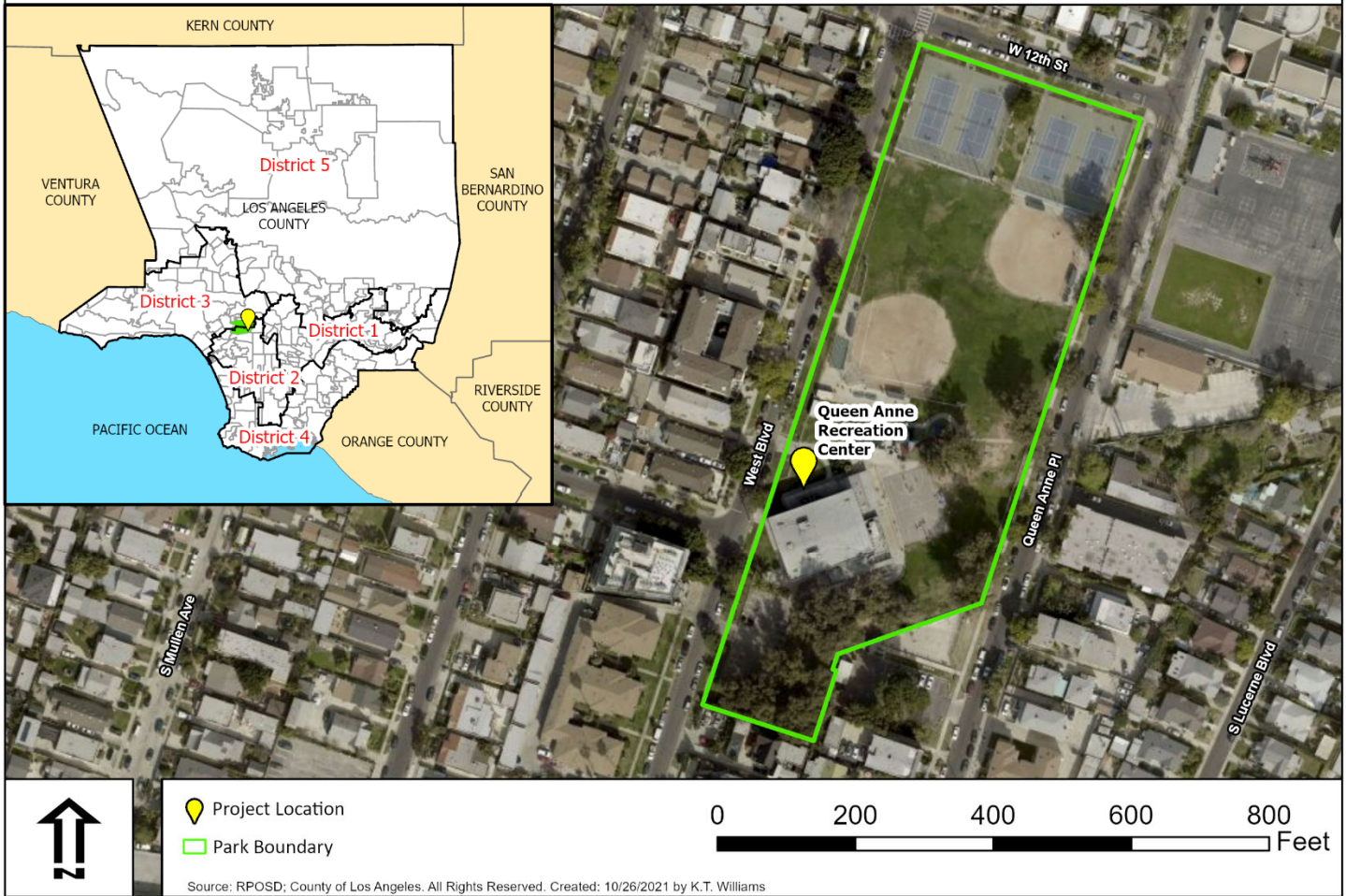
Grantee:	City of Covina
Location:	303 N. 4th Avenue, Covina, CA 91723
Study Area ID:	93
Need Level:	Moderate
Project Description/Objective:	The current accessible playground structures and surfacing will be replaced with fully inclusive structures and surface material.
Status:	Underway
Reported Other Funding Source Total:	\$ 447,972.81
Grant Program:	 Category 1 – Community-Based Park Investment Program
Grant Award Amount:	\$ 310,213.30


City of Diamond Bar Canyon Loop Trail Improvement Project



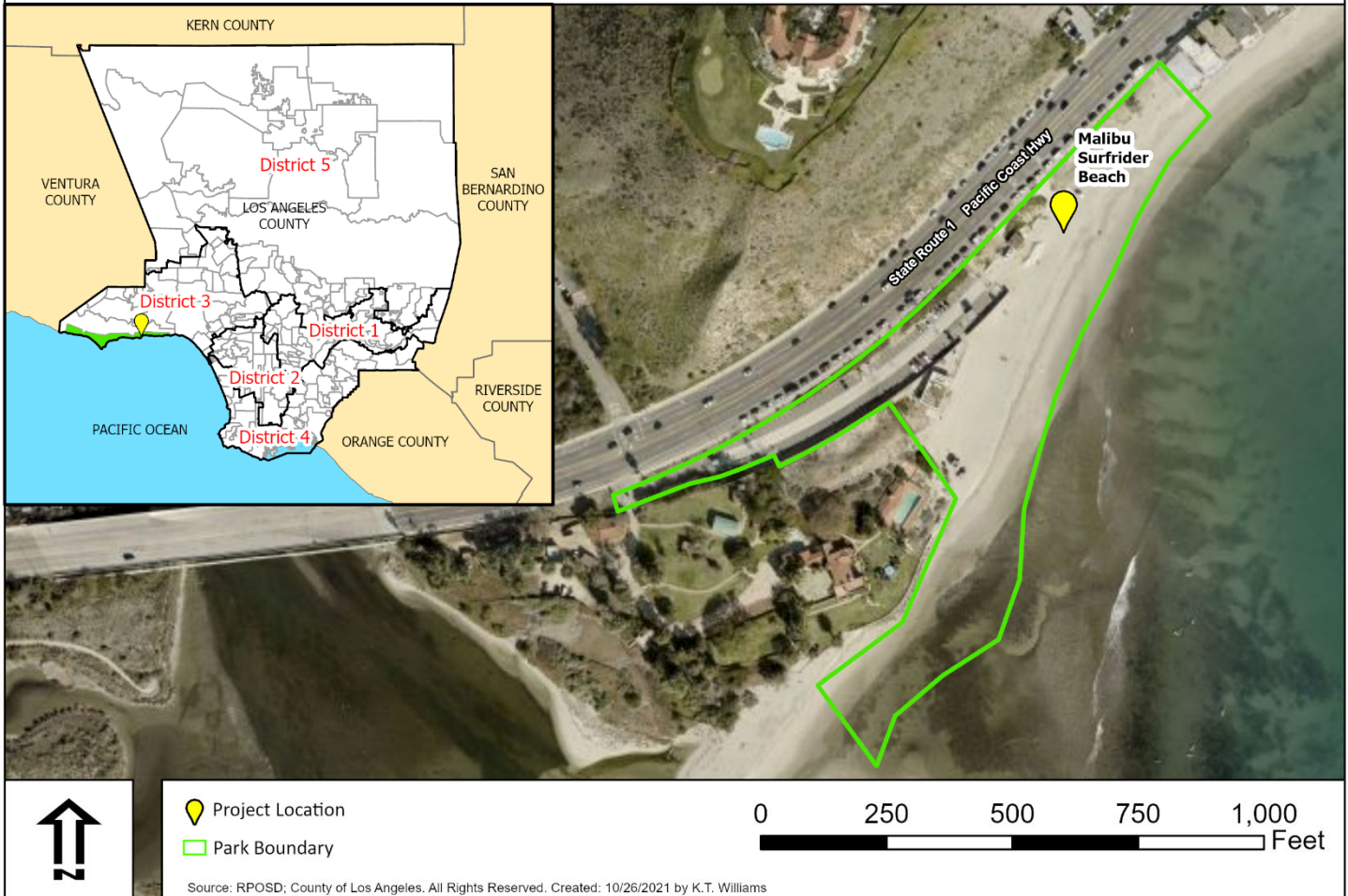
Grantee:	City of Diamond Bar
Location:	1425 Summitridge Drive, Diamond Bar, CA 91765
Study Area ID:	157
Need Level:	Low
Project Description/Objective:	The project will realign, re-grade, and improve drainage of the trail; install directional and interpretive signage; construct rest areas, small shade shelters and climbing steps; and provide water diverting improvements.
Status:	Underway
Reported Other Funding Source Total:	\$ 467,496.00
Grant Program:	 Category 1 – Community-Based Park Investment Program
Grant Award Amount:	\$ 184,000.00


**City of Los Angeles
(Wilshire - West)
Queen Anne Recreation Center Playground Replacement Project**



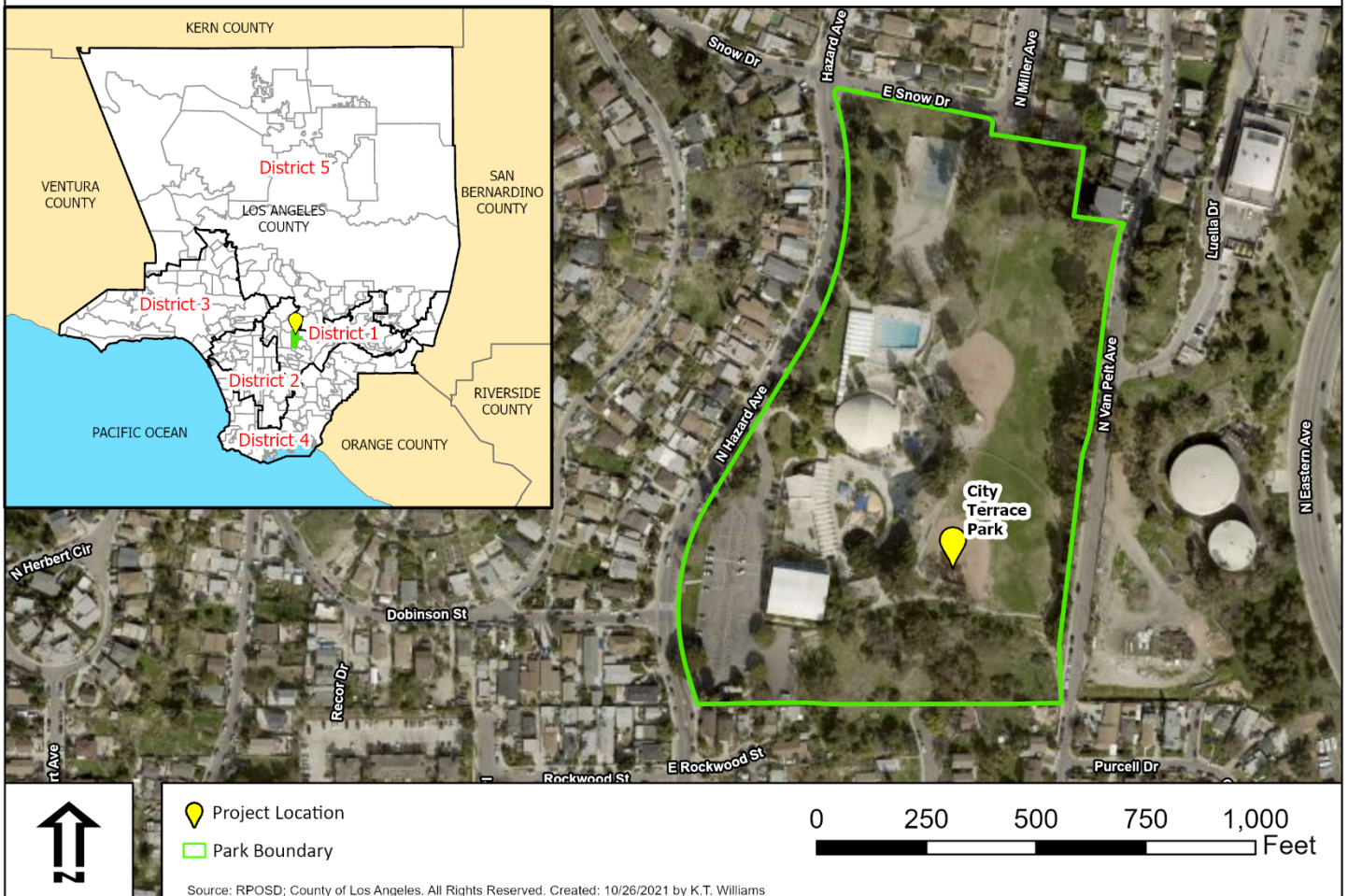
Grantee:	City of Los Angeles (Wilshire - West)
Location:	1240 West Boulevard, Los Angeles, CA 90019
Study Area ID:	108
Need Level:	High
Project Description/Objective:	Demolition and removal of existing play area. Installation of new play area and safety surfacing. Site landscaping and other amenities. Park pathway and path of travel improvements. Parking lot improvements.
Status:	Underway
Reported Other Funding Source Total:	N/A
Grant Programs:	 Category 1 – Community-Based Park Investment Program  Category 2 – Neighborhood Parks, Healthy Communities, & Urban Greening Program
Grant Award Amount:	\$ 770,300.00



Los Angeles County Department of Beaches and Harbors Surfrider Beach Restroom Refurbishment Project



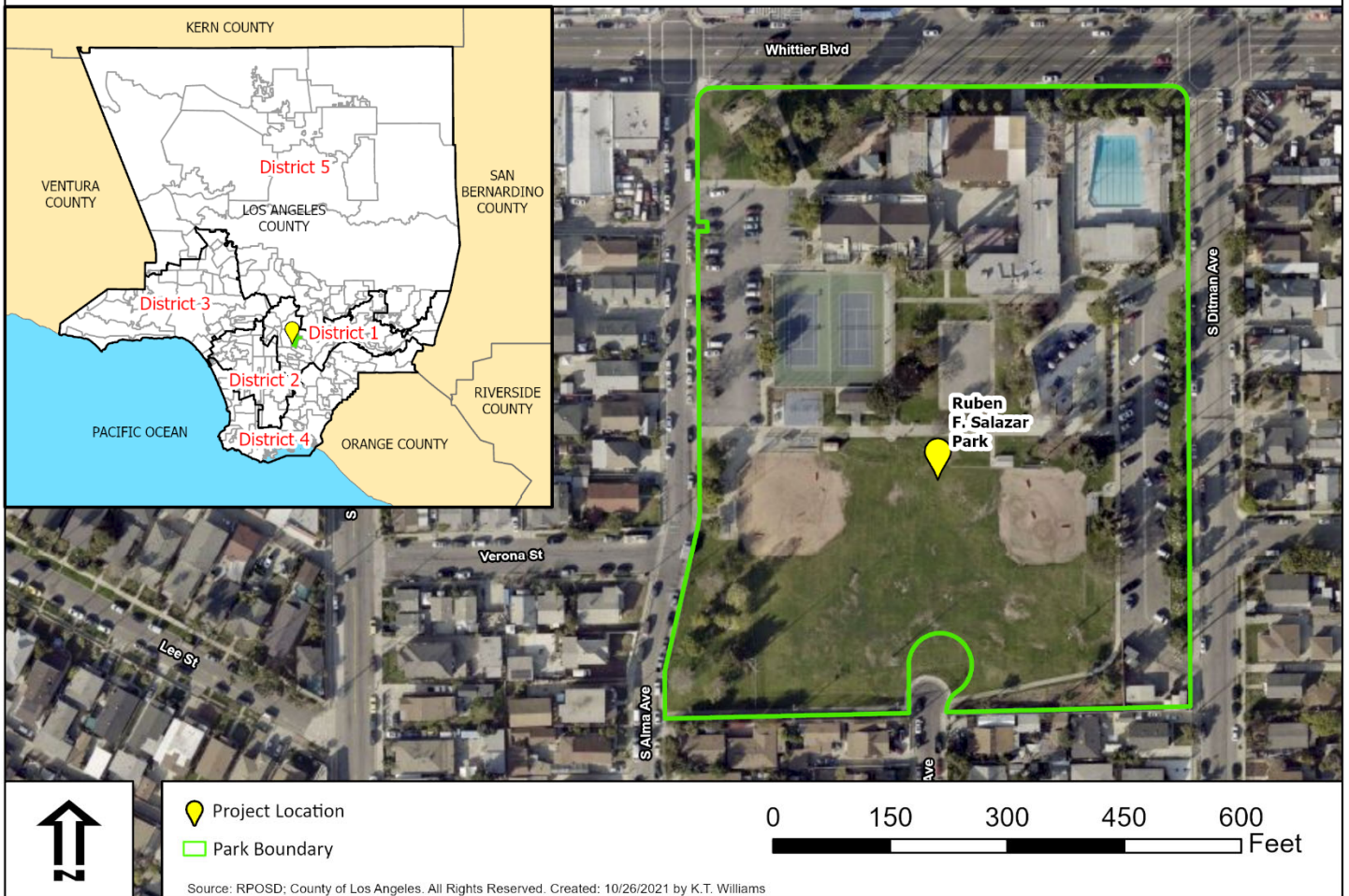
Grantee:	Los Angeles County Department of Beaches and Harbors
Location:	23050 Pacific Coast Highway, Malibu, CA 90265
Study Area ID:	75
Need Level:	Very Low
Project Description/Objective:	The project updates deteriorated restrooms and will provide American with Disabilities Act compliant improvements. The much-needed improvements will continue to provide access to free public beach facilities at this location.
Status:	Underway
Reported Other Funding Source Total:	N/A
Grant Program:	 Category 3 – Natural Lands, Local Beaches, Water Conservation and Protection
Grant Award Amount:	\$ 608,000.00


Los Angeles County Department of Parks and Recreation
(Unincorporated East Los Angeles – Northwest)
City Terrace Park Ballfield Lighting Improvement Project



Grantee:	Los Angeles County Department of Parks and Recreation (Unincorporated East Los Angeles - Northwest)
Location:	1126 N. Hazard Avenue, Los Angeles, CA 90063
Study Area ID:	70
Need Level:	Very High
Project Description/Objective:	The project will result in new energy efficient LED light fixture top assemblies for the multipurpose sports fields and surround security system.
Status:	Underway
Reported Other Funding Source Total:	N/A
Grant Programs:	 Category 1 – Community-Based Park Investment Program  Category 2 – Neighborhood Parks, Healthy Communities, & Urban Greening Program
Grant Award Amount:	\$ 624,500.00

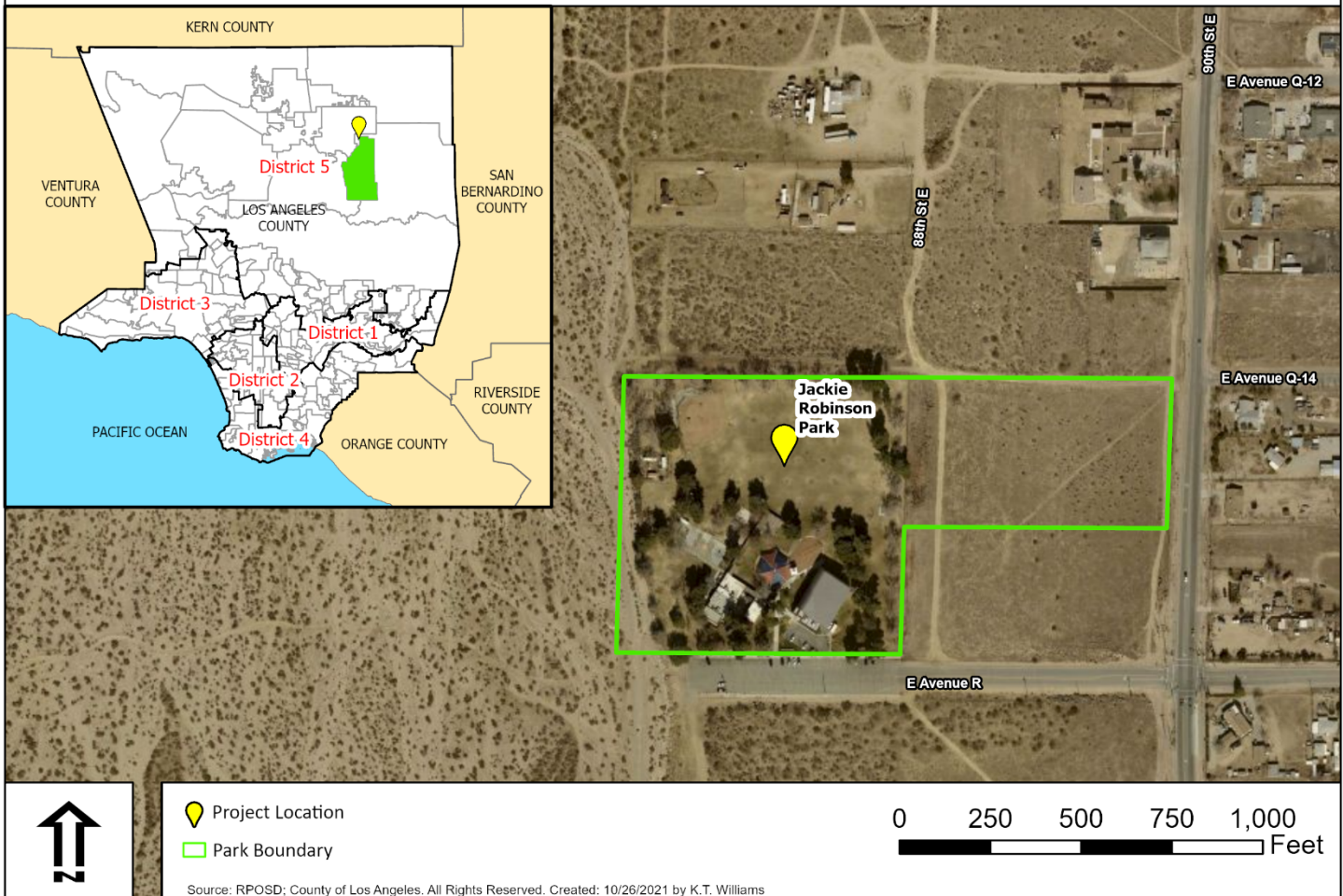
Los Angeles County Department of Parks and Recreation
(Unincorporated East Los Angeles - Northwest)
Salazar Park Community Engagement Project




Grantee:	Los Angeles County Department of Parks and Recreation (Unincorporated East Los Angeles - Northwest)
Location:	3864 Whittier Boulevard, Los Angeles, CA 90023*
Study Area ID:	70
Need Level:	Very High
Project Description/Objective:	The project will allow LA County DPR to receive input from residents and stakeholders about Salazar Park's developments while meeting requirements of the Statewide Park Program by providing a means to collaborate with a CBO to implement engagement.
Status:	Underway
Reported Other Funding Source Total:	N/A
Grant Program:	 Category 2 – Neighborhood Parks, Healthy Communities, & Urban Greening Program
Grant Award Amount:	\$ 39,800.00

* Project is a Planning & Design Grant, project address listed is the location of the future potential development project.

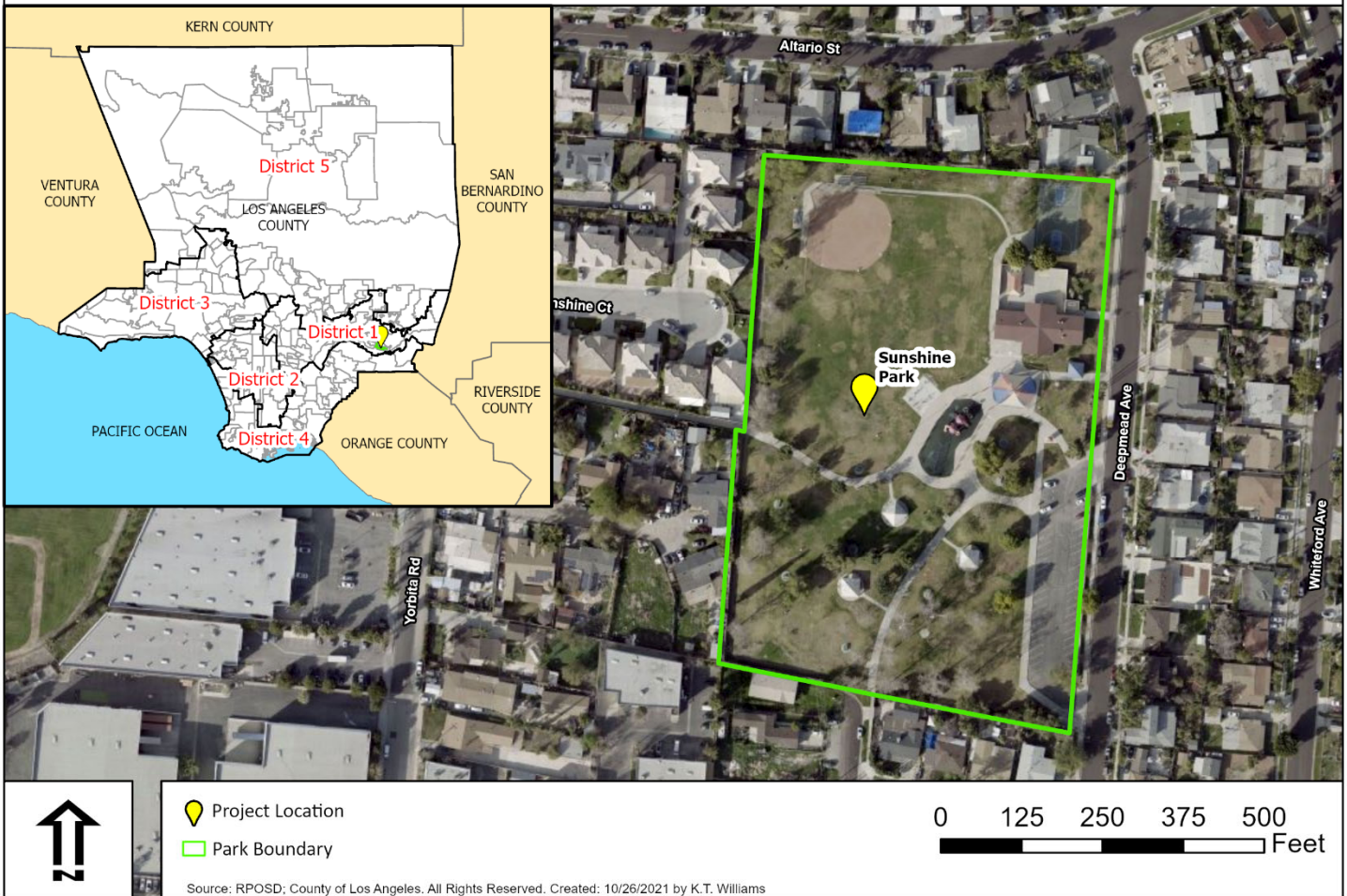
Los Angeles County Department of Parks and Recreation
(Unincorporated Littlerock)
Jackie Robinson Park Project




Grantee:	Los Angeles County Department of Parks and Recreation (Unincorporated Littlerock)
Location:	8773 East Avenue R, Littlerock, CA 93543*
Study Area ID:	36
Need Level:	Very Low
Project Description/Objective:	Topographic survey, title report and contract with a consultant to obtain a professional cost estimate to increase local community participation in the design and planning of project at Jackie Robinson Park. Measure A funding will not be utilized for the community outreach portion of the grant.
Status:	Underway
Reported Other Funding Source Total:	N/A
Grant Program:	 Category 1 – Community-Based Park Investment Program
Grant Award Amount:	\$ 21,471.00

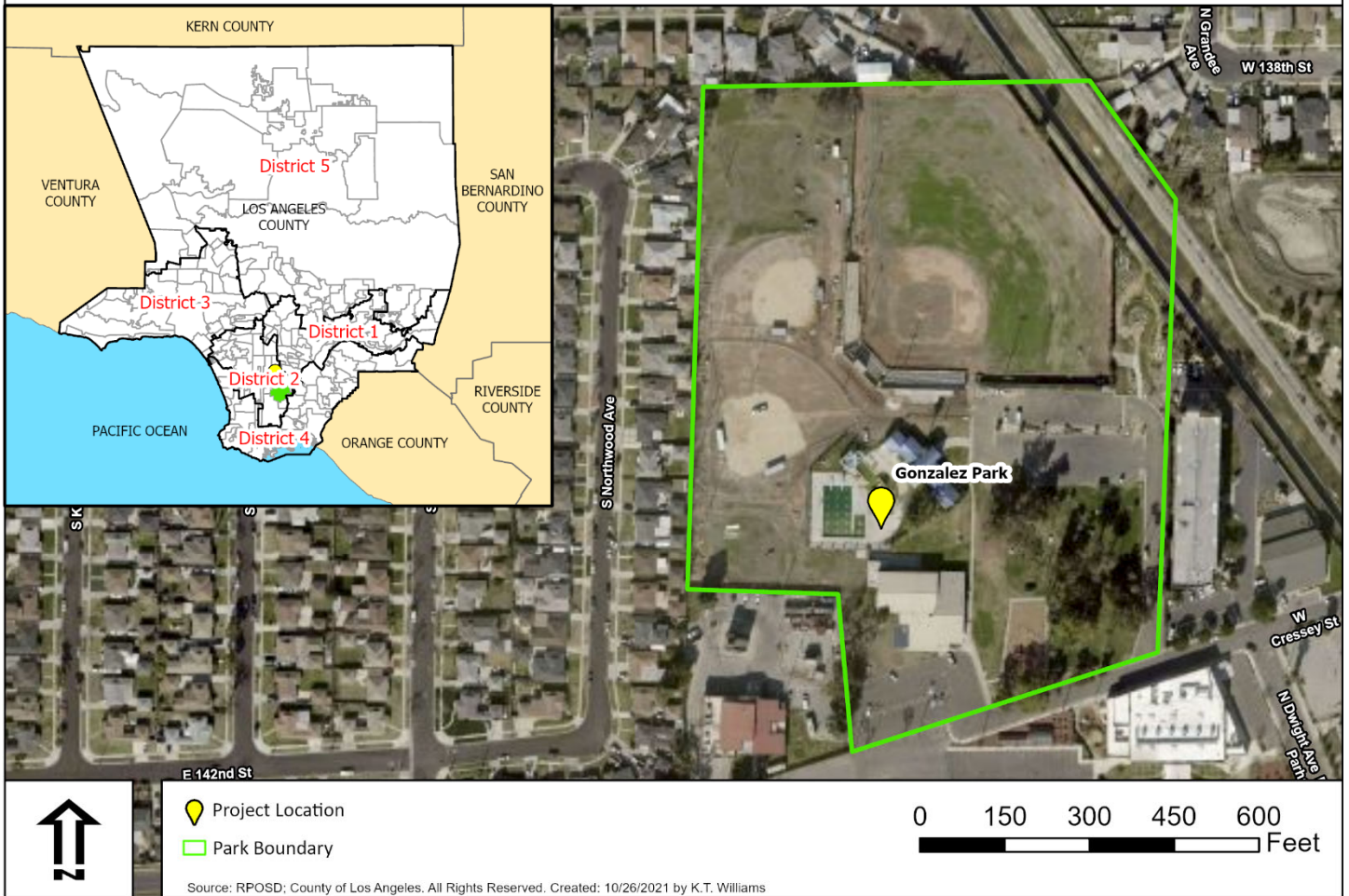
* Project is a Planning & Design Grant, project address listed is the location of the future potential development project.


Los Angeles County Department of Parks and Recreation
(Unincorporated San Jose Hills)
Sunshine Park Walking Path Improvement Project



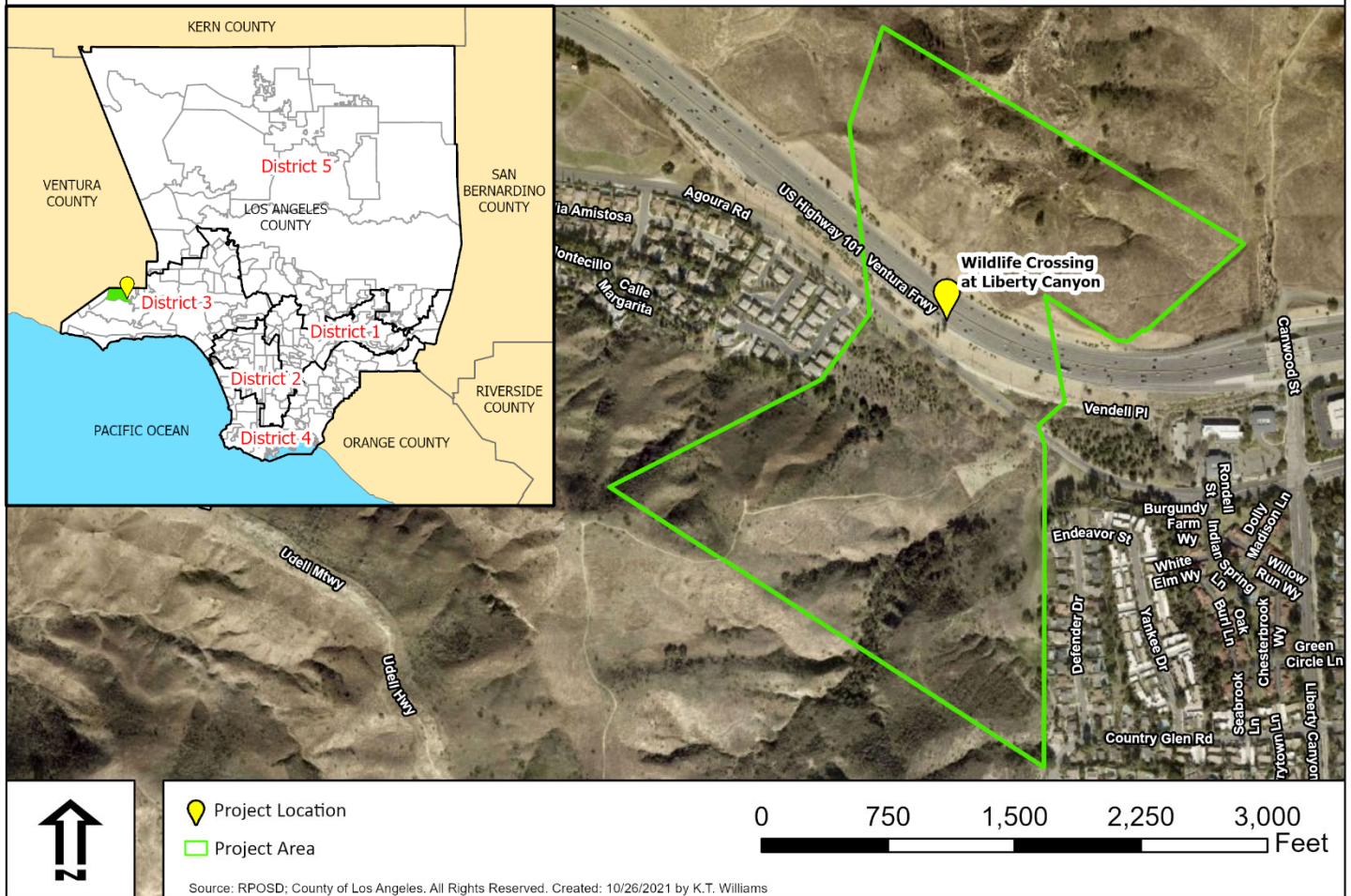
Grantee:	Los Angeles County Department of Parks and Recreation (Unincorporated San Jose Hills)
Location:	515 South Deepmead Avenue, La Puente, CA 91744
Study Area ID:	20
Need Level:	Moderate
Project Description/Objective:	Produce a decomposed granite walking path that runs along the west and south side of Sunshine Park. The path will connect to and extend the existing path, creating a walking path that runs around the entire perimeter of the park.
Status:	Underway
Reported Other Funding Source Total:	N/A
Grant Program:	 Category 1 – Community-Based Park Investment Program
Grant Award Amount:	\$ 75,000.00


Los Angeles Dodgers Foundation Dodgers Dreamfields at Gonzalez Park Project



Grantee:	Los Angeles Dodgers Foundation
Location:	1101 W. Cressey Street, Compton, CA 90222
Study Area ID:	142
Need Level:	High
Project Description/Objective:	Rehabilitation of existing baseball fields to include fitness and training zones and solar energy components.
Status:	Underway
Reported Other Funding Source Total:	\$ 1,669,070.00
Grant Program:	 County Priority Projects Program
Grant Award Amount:	\$ 75,000.00

National Wildlife Federation Liberty Wildlife Crossing in Agoura Hills Project



Grantee:	National Wildlife Federation
Location:	101 Freeway and Agoura Road at the Liberty Canyon Road exit Latitude 34.13923 Longitude -118.72915*
Study Area ID:	81
Need Level:	Very Low
Project Description/Objective:	Measure A Funds will be used for pre-construction design work, to be completed by Living Habitats LLC, to meet the Caltrans 95% design plan review.
Status:	Underway
Reported Other Funding Source Total:	\$ 156,500.00
Grant Program:	 County Priority Projects Program
Grant Award Amount:	\$ 100,000.00

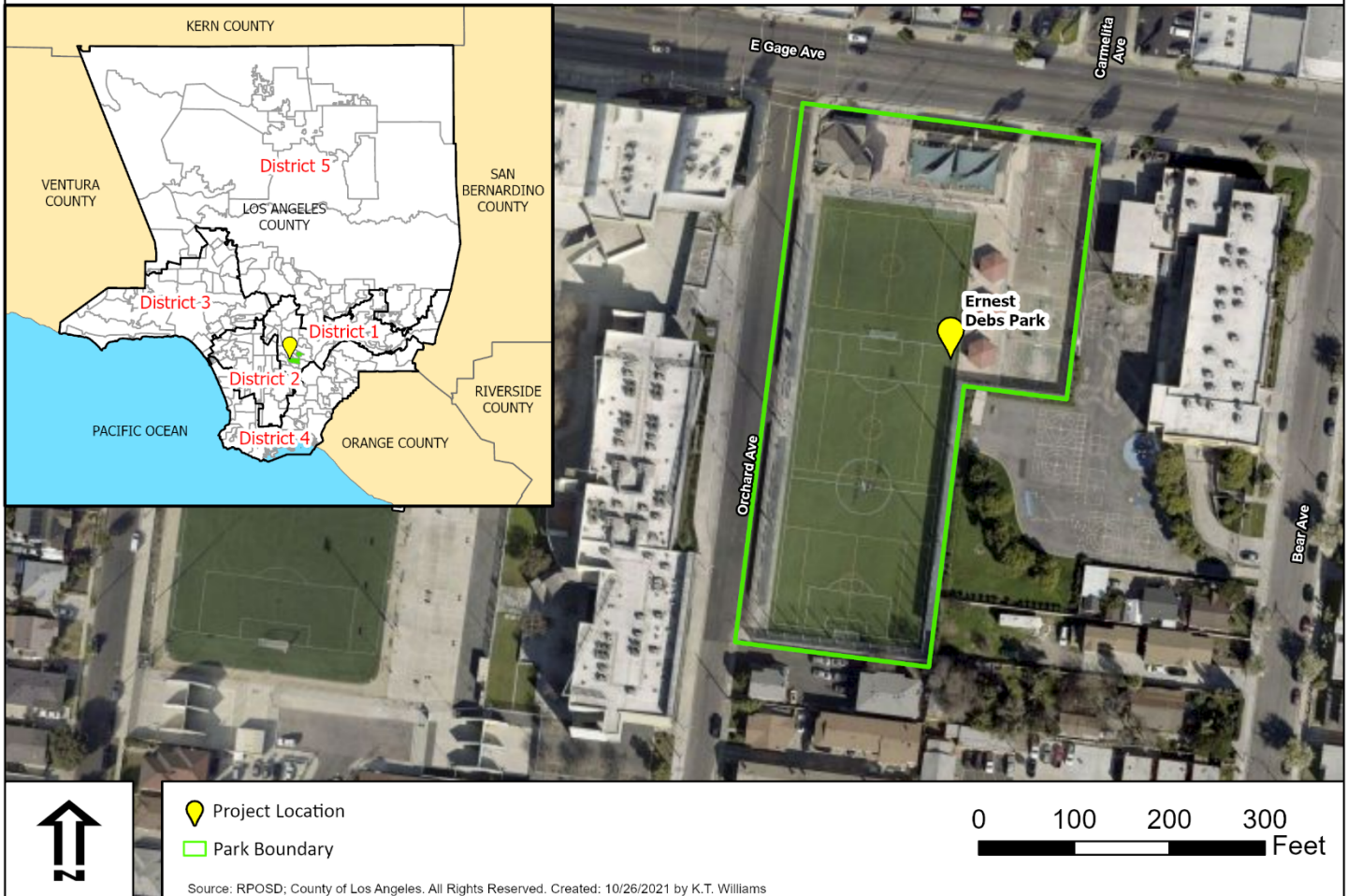
* Project is a Planning & Design Grant, project address listed is the location of the future potential development project.

Summary of Closed Grants

1 project was completed in the Fiscal Year 2020/2021.

1	Study Area ID	Need Level	Grantee	Project	Closed Date	Amount Awarded
	71	Very High	City of Bell	Plan and Design for Ernest Debs Park Fitness Gym Rehabilitation	6/29/2021	\$ 5,883.00
Total						\$ 5,883.00

City of Bell Plan and Design for Ernest Debs Park Fitness Gym Rehabilitation Project



Grantee:	City of Bell
Location:	3700 Gage Avenue, Bell, CA 90201*
Study Area ID:	71
Need Level:	Very High
Project Description/Objective:	Produce a conceptual design, renderings, bid specs/estimates, and construction notes for the refurbishment of the area. The documents are crucial to proceed to the next step which is acquiring a proposal from a prospective contractor to move forward with development.
Status:	Closed
Reported Other Funding Source Total:	N/A
Grant Program:	 Category 2 – Neighborhood Parks, Healthy Communities, & Urban Greening Program
Grant Award Amount:	\$ 5,883.00

* Project is a Planning & Design Grant, project address listed is the location of the future potential development project.

Appendix III

Proposition A 2021 Plan of Revenue Expenditure



ATTACHMENT I

2021

**PLAN OF REVENUES AND
EXPENDITURES**

REPORT ON THE REVENUE AND EXPENDITURE FORECAST

**Safe Neighborhood Parks Acts of
1992 and 1996
Regional Park and Open Space District**

June 2021

Prepared by

**Los Angeles County
Regional Park & Open Space District**
1000 South Fremont Avenue
Alhambra, CA 91803

In consultation with

PUBLIC RESOURCES ADVISORY GROUP
11500 West Olympic Boulevard, Suite 502
Los Angeles, CA 90064

TABLE OF CONTENTS

ATTACHMENT I

Section	Page
<u>PART 1 - Report on the Revenue and Expenditure Forecast</u>	
I. THE SAFE NEIGHBORHOOD PARKS ACTS -	
The 1992 Propostion A and 1996 Proposition A -----	1
A. 1992 Proposition A -----	1
B. 1996 Proposition A -----	1
C. The Assessment / Pledged Revenues -----	2
D. Rate and Method of Assessment / Benefit Points -----	3
II. BENEFIT POINTS INVENTORY -----	4
III. PROJECTION OF REVENUES AND RELATED ASSUMPTIONS	
A. Assessment Reveune Assumptions -----	5
B. Interest Revenue Assumptions -----	6
IV. PROJECT COSTS AND PHASING ASSUMPTIONS -----	7
Table 1 - Actual and Projected Expenditures -----	7
V. EXCESS FUNDS -----	9
Table 2 - Excess Funds Deposits -----	11
APPENDIX A - Benefit Point Summary By Use Code	
<u>PART 2 - Plan of Revenue and Expenditure Model</u>	
Assumptions -----	1
Aggregate Debt Service -----	2
Revenue Forecast -----	3
Expenditure Forecast -----	4
Revenues and Expenditures -----	5
Cash Flow Summary -----	6

ATTACHMENT II - Status of Excess Funds Before New Excess

ATTACHMENT III - Status of Excess Funds with New Excess

ATTACHMENT IV - Graphics of Excess Fund Interpretation

PART 1

Report on the Revenue and Expenditure Forecast

I. THE SAFE NEIGHBORHOOD PARKS ACTS - THE 1992 PROPOSITION A AND THE 1996 PROPOSITION A

A. THE 1992 PROPOSITION A

The District was formed and annual assessments are levied pursuant to the California Public Resources Code and the Landscaping and Lighting Act of 1972. On November 3, 1992, the District was established when voters approved the Safe Neighborhood Parks Proposition of 1992 (“1992 Proposition”). The District was established for the preservation of beaches, parks and wetlands; the construction, renovation and improvement of new and existing recreational facilities; and the restoration of rivers, streams and trails in the County. The District’s boundaries are coterminous with those of the County, encompassing 4,083 square miles and containing more than 2.3 million parcels. The District is governed by the County of Los Angeles Board of Supervisors with the District’s day-to-day operations administered by the County Department of Parks and Recreation. The 1992 Proposition “capped” the assessment at \$9.39 per benefit point per year. The 1992 Proposition A assessment was first levied and collected by the District in Fiscal Year (FY) 1993-1994. The 1992 Proposition allowed for assessment collections over a 22-year period with the final assessment scheduled for FY 2014-2015.

B. THE 1996 PROPOSITION A

On November 5, 1996, voters approved an additional assessment with the passage of the Safe Neighborhood Parks Proposition of 1996 (the “1996 Proposition”). The additional assessment supplemented the existing assessment to fund comparable improvements to those adopted in the 1992 Proposition. However, the 1996 Proposition amended the 1992 assessment “to the extent and with the effect that the portion of any vacant parcel of land, and the vacant portion of any partially improved parcel of land, in excess of two and one-half acres (2.5) shall not be assessed.” To clarify any inconsistencies between the two Propositions, the 1996 Proposition further added that:

“It is the intent of this resolution that the method of assessment with respect to both the 1992 Assessment and the Additional Assessment be identical in all respects. Any such discrepancies, differences or variations in the method of assessment shall be resolved in favor of the Engineer’s Report with respect to the Additional Assessment.”

Finally, the 1996 Proposition “capped” the additional assessment at \$5.07 per benefit point per year. The 1996 Proposition assessment was first levied and collected by the District in FY 1997-1998. The 1996 Proposition A allowed for assessment collections over a 22-year period with the final assessment scheduled for FY 2018-2019.

C. THE ASSESSMENT/PLEDGED REVENUES

The District's budget and accounting systems have been structured in accordance with the revenue flow and accounting requirements provided by the Propositions. The District's primary revenue source is the assessments that are levied annually on each of the approximately 2.3 million parcels within the District (except for uninhabited agricultural lands, cemeteries, utilities and other exempt parcels). Assessment revenues and interest earnings are generally distributed in the following manner: a minimum of 80% (but not more than 85%) of the assessments will be used for the payment of debt service on bonds, notes and other obligations issued by the District and for the direct, capitalized costs incurred on approved Projects; 15% of the assessments will be used for the maintenance and servicing of completed Projects; and approximately 5% of the assessments will be used to pay for the District's ongoing administrative expenses.

Section 23 (a) of both Propositions state that in each of the first twenty (20) years after the first assessment were levied and collected, a minimum of eighty percent (80%) of all proceeds of the assessment levied and collected shall be used for capital outlay purposes.

Section 21 (b) of the 1996 Proposition provides: Consistent with subsection (a) of Section 23, proceeds of the Additional Assessment shall be used for payment of actual administrative costs associated with carrying out the purposes of the District, by the District and recipient Public Agencies.

Section 21 (a) of the 1992 Proposition provides for payment of actual administrative costs but due to restrictions under Section 23 (a) where a minimum of 80% of revenues collected has to be spent on capital outlay projects during the first 20 years of the Proposition, and 15% has to go to maintenance projects, only 5% can be allocated to administrative costs.

Fiscal Year 2012-13 was the 20th year of the 1992 Proposition. The 2013 Plan recommended to the Board of Supervisors changes in the distribution of revenues for the 1992 Proposition, and the 2014 Plan started implementing the changes in the distribution of assessment revenues after the 20th year. The 2021 Plan continues to implement the changes. Accordingly, administrative expenses, which has exceeded 5% of the revenues and is projected to do the same in the future, has been reimbursed for actual costs beginning FY 2013-14 from the 1992 Proposition and beginning in FY 2017-18 from both Propositions. With the restriction for capital projects having been lifted, the distribution of revenues will be as follows:

- (1) reimbursement of actual administrative costs;
- (2) up to 20% to maintenance and servicing fund; and
- (3) the balance, if any, to capital projects including payment of debt service.

D. RATE AND METHOD OF ASSESSMENT/ BENEFIT POINTS

The rate and method of apportionment for use in levying annual assessments for various categories of property area as set forth in the Engineer's Report for County of Los Angeles Landscaping and Lighting District No. 92-1, was adopted by the Board of Supervisors on March 17, 1992, and modified on June 18, 1996 to include the additional assessment. Pursuant to the Engineer's Report, the level of each assessment is based on the size and use of each parcel and the resulting benefit each parcel would receive from the proposed Projects. The estimation of such benefit was quantified in benefit points. Pursuant to the Proposition, the annual rate of each assessment was limited to \$9.39 per benefit point for the 1992 Proposition and \$5.07 per benefit point for the 1996 Proposition. The annual assessment for any parcel was levied at the amount to equal the annual rate determined by the Board of Supervisors multiplied by the number of benefit points applicable to each parcel. In each year, the assessments were levied at the maximum allowable annual rates.

The overall level of the District's assessments had increased as parcels were subdivided, and vacant property was developed. Properties owned by public agencies, such as cities, the County, the state or the federal government, were not assessed except when such property had not been devoted to public use. Rights-of-way owned by utilities, railroad operating rights-of-way, uninhabited agricultural lands, cemeteries and certain other properties were also exempt from the assessments. Some individuals who qualified for the California Property Tax Postponement Program, which generally provides for the postponement of certain payments by individuals 62 years of age or older of property taxes attributable to residential dwellings, also qualified for postponement of payment of assessments levied by the District. Allegations of errors of assessment, including circumstances that had not precisely fit the intent of the Propositions, such alleged errors were reported to a committee appointed by the County Board of Supervisors. This committee was responsible for and made recommended corrections or adjustments that were consistent with the concept, intent and parameters of the Propositions and the District's program of levying and collecting the assessments. Except for any proposed corrections and adjustments of the committee that were appealed to and adjusted by the County Board of Supervisors, the proposed corrections and adjustments were incorporated into the assessment roll.

II. BENEFIT POINTS INVENTORY

The calculation of assessment revenues involved a review and inventory of parcels, use codes, and determination of benefit points within the District. The first step in this process was to determine the current inventory of benefit points.

The benefit point inventory provided by the Auditor-Controller is summarized by assessor use codes in Appendix A. For purposes of the revenue forecast, the assessor use codes for regular parcels are grouped into six major categories: developed residential, developed non-residential, undeveloped residential, undeveloped non-residential, recreational, and institutional land uses.

The information provided by the Auditor-Controller for the tax roll in FY 2018-19 showed that the cumulative benefit points total 5,622,317 from the 2,361,322 parcels existing in the tax rolls

of Los Angeles County. The cumulative benefit points produced a revenue total of \$28,505,149 for FY 2018-19.

As mentioned in the previous section on Rates and Methods of Assessment, properties owned by public agencies, such as cities, the County, the state or the federal government, were not assessed except when such property is not devoted to public use. Rights-of-way owned by utilities, railroad operating rights-of-way, uninhabited agricultural lands, cemeteries, common areas, sliver parcels, and certain other properties were also exempt from the assessments. The District did not submit for enrollment assessments that are less than \$0.01. Additionally, the District did not submit for enrollment assessments for parcels for which the acreage information needed to calculate benefit points which cannot be determined by the Department of Public Works Flood Control Database. Parcels with missing information were initially identified by the Auditor-Controller in a Benefit Points Exception Report; most of these exceptions fall into two categories: 1) invalid or missing use codes and 2) missing land acreage. Notwithstanding, District staff had developed and implemented a system to procure the missing information for the exceptions, thereby allowing for benefit-point calculations and enrollment submission for the majority of the exceptions (many of the parcels for which information is not procured are no longer in existence). These aggressive efforts of District staff had considerably reduced the cumulative number of exceptions.

III. PROJECTION OF REVENUES AND RELATED ASSUMPTIONS

A. ASSESSMENT REVENUE ASSUMPTIONS

Based on information provided by the Los Angeles County Auditor-Controller, the District adjusted the assessment assumptions to account for appeals, parcel enrollment losses, delinquencies, and County collection/administrative fees. These assumptions are summarized below:

1. Appeals Rate. The Propositions allow for adjustments to assessments based on inaccurate acreage, inaccurate assessor use codes, conservancy properties, etc. Based on actual appeals data for FY 2017-18, the appeals rate was equal to 0.192% of the gross assessment levy. Assessment appeals were shown as adjustments to the tax roll. Where adjustments could be included in the normal system generated tax billing, they were included in an “override” file that would be run in the following tax year.
2. Parcel Enrollment Losses. The report adjusted the assessment assumptions to account for losses which occurred between the Auditor-Controller’s submittal of direct assessments to the County and the reconciliation of parcels which were actually enrolled on the secured tax roll. Based on the existing Auditor-Controller program calculation of benefit points and the actual amounts enrolled for FY 2018-2019, the revenue loss after adjustment was \$2.45 or 0.000009%.
 1. Delinquency Assumptions. For purposes of this report, the delinquency rate based on the FY 2017-18 tax ledgers of 1.935% was used. In the revenue projections the report has included the standard 10% redemption penalty fee as well as an average annual delinquency interest rate of 18%. The report has used the County’s existing assumptions regarding delinquency recovery rates of 91% over 5 years based on a “sliding scale” of 45% recovery for Year 1, 22% for Year 2, 11% for Year 3, 9% for Year 4, and 4% for Year 5. The actual County delinquency interest rate is 1.5% per month (or 18% annualized). However, the 9% delinquency interest rate assumption is premised on straight-line collections through the FY. Thus, delinquency interest rates are assumed to be 9% for collections of past due assessments of the first year, 18% for the second year, 27% for the third year, 36% for the fourth year and 45% for the fifth year. Note that the report has not made any adjustments in revenue projections for the Property Tax Postponement Program, the 5-Year Payment Plan, or for any revenues generated by County foreclosure actions. The result of these conservative assumptions was to assure that the report’s cash flow projection was non-speculative in nature.
4. Auditor-Controller Collection and Administrative Fees. The Auditor-Controller charges the District for services from the Systems Division and another from the Tax Division to put the District assessments in the tax rolls. Additional

accounting and auditing charges are also billed by the Auditor-Controller for various services rendered to the District. To date, all of these services were borne entirely by the District administration fund and does not affect collection of revenues.

B. INTEREST REVENUE ASSUMPTIONS

District funds earn interest at the rates paid in the County of Los Angeles Treasurer's Pooled Investments. Revenue from interest on District funds is projected for future years by applying lower interest rates to projected fund balances. When the District was using bond proceeds to fund projects, the assessment funds were accumulating and earning more interest. The District effectively expended all remaining bond proceeds in FY 2004-05. As a result, projects have been solely funded by assessment revenues since FY 2005-06. As the District pays down the balance of the projects funded by the propositions, the assessment revenue project funds is decreased, hence interest earnings from the reduced principal is also reduced.

IV. PROJECT COSTS AND PHASING ASSUMPTIONS

The update to the expenditure program consisted of three separate steps. The first step was to update the program with actual expenditures for prior years. The second step consisted of updating the expenditure program with estimated actual expenditures for the current fiscal year. Finally, the third step involved projecting the remaining expenditures for the life of the program.

The forecast for remaining project expenditures were further adjusted to take into account current encumbrances of \$12,229,060 for such expenditures as of March 31, 2021 and commitments to grants totaling \$18,733,580 as of March 31, 2021. The current encumbrance reflects funds set aside to cover the committed grants for outside agencies which have not yet been spent. For the purposes of the projection, the amount of future encumbrances is assumed to remain constant as long as the remaining expenditures are higher than that amount and to decline to match remaining expenditures thereafter. The effective result is equivalent to an assumption that project expenditures are accelerated slightly, and the approach minimizes the possibility of underfunding the unpaid grant balances in any year. Table 1 below shows historical actual expenditures thru FY 2019-20, estimated actual for FY 2020-21 and forecasted future expenditures. The table shows that bond proceeds were phased out in FY 2004-05. It also shows that some grants are projected to be spent through FY 2018-19 but may extend further into the future.

Table 1
Actual and Projected Expenditures from 1993-94 to 2020-21 (in \$1000)

Description	Actual								
	1993-94	1994-95	1995-96	1996-97	1997-98	1998-99	1999-00	2000-01	2001-02
Bond Financed Improvements	17,210	35,686	52,052	58,080	56,766	56,453	66,959	75,179	57,994
Assessment Improvements	28,081	11,622	11,655	23,489	6,850	10,675	3,449	7,877	1,018
Total Project Funding	45,291	47,308	63,707	81,569	63,616	67,128	70,408	83,056	59,012
Cumulative Project Funding	45,291	92,599	156,306	237,875	301,491	368,619	439,027	522,083	581,095

Description	Actual								
	2002-03	2003-04	2004-05	2005-06	2006-07	2007-08	2008-09	2009-10	2010-11
Bond Financed Improvements	40,344	36,198	758	-	-	-	-	-	-
Assessment Improvements	3,354	1,840	30,067	22,177	20,554	10,997	26,000	11,746	5,505
Total Project Funding	43,698	38,038	30,825	22,177	20,554	10,997	26,000	11,746	5,505
Cumulative Project Funding	624,794	662,832	693,656	715,833	736,387	747,384	773,384	785,130	790,634

Description	Actual								
	2011-12	2012-13	2013-14	2014-15	2015-16	2016-17	2017-18	2018-19	2019-20
Bond Financed Improvements		(1,972)	(3)	1,976	-	-	-	-	-
Assessment Improvements	8,072	5,001	5,056	7,521	2,339	6,948	7,242	2,090	4,211
Total Project Funding	8,072	3,029	5,053	9,497	2,339	6,948	7,242	2,090	4,211
Cumulative Project Funding	798,706	801,734	806,787	816,284	818,624	825,572	832,814	834,887	839,098

Description	Estimated Actual
	2020-21
Bond Financed Improvements	-
Assessment Improvements	19,902
Total Project Funding	19,902
Cumulative Project Funding	859,000

V. EXCESS FUNDS

As the capital funding requirements have been satisfied, allocations for grants in furtherance of the purposes of the Propositions can be made from “excess” revenues¹. Under the 1996 Proposition, the County’s independent financial consultant annually determines what portion of the excess revenues from the prior year can be made available for other projects in the next fiscal year without impairing the District’s ability to finance all of its planned capital outlay projects or its ability to issue or repay bonds, notes or indebtedness. According to the 1996 Proposition, 80% of the “available excess” shall be made available to the Board for its use on other projects.

The 1996 Proposition, in Section 21 (j), requires that the District consult with an independent financial consultant in preparation of each year’s Plan of Revenues and Expenditures. For the 1997 baseline Plan of Revenues and Expenditures, a consulting team, Taussig Associates, was retained by means of a Board-authorized solicitation of proposals, and the same team was employed for the preparation of the 1998 and 1999 Plans. The District, subsequently through a contract with the County of Los Angeles Treasurer and Tax Collector, engaged the services of Public Resources Advisory Group (PRAG). This group served as independent financial consultant for the years 2000 through 2020. This year, the District’s consulting services were also provided by the same group.

The 1996 Proposition, in Section 24 (a) also requires the independent financial consultant to determine what amount of excess funds, if any, from the prior year’s audited financial statements are available for allocation. The resulting excess funds may be made available in the next fiscal year without impairing the District’s ability to service its debt and without impairing the District’s ability to finance all \$859,000,000 in capital outlay projects. The resulting excess funds called “Available Excess”, as determined each year by the independent financial consultant are then available for use by the District to fund eligible capital outlay projects.

With the lifting of restrictions imposed by Section 23 (a) on capital projects beginning 21st year of the 1992 Proposition (FY 2013-14) and 1996 Proposition (FY 2017-18), Section 24 (a) can be implemented fully to provide 20% of 80% of Excess Fund Determined by the consultant for maintenance and servicing (M&S) of projects funded by Excess Funds. The 2021 Plan reflects the changes in projection of revenues allocated to Excess Funds. In the calculation of maintenance and servicing fund for Excess Funds funded projects, revenues accumulated and part of reserves in prior year declaration of excess funds were excluded. Only new revenues collected after the 20th year is subject to calculation of M&S for Excess Funds funded projects. The Plan reserves 20% from 20% of Available Excess, previously utilized as a safety measure to provide fiscal responsibility during uncertain times, now allocates to administrative fund to help defray shortfall in District revenues after sunset of both Propositions.

¹“Excess” is defined in Section 24(a) of the 1996 Proposition as the excess of (1) assessment revenues collected pursuant to this resolution and the 1992 Order plus investment earnings thereon, and any other revenues of the District (excluding bond proceeds or any other evidences of indebtedness, but including collections of delinquent assessments and interest and penalties thereon), all cumulative to the date of the independent audit, over (2) amounts expended for capital outlay (excluding capital outlay funded with bond proceeds or other borrowed funds), and amounts expended, or allocated for maintenance and servicing, administrative costs and debt-service, all cumulative to the date of the independent audit.

Table 2 below depicts past allocations and projected allocations of the “available excess” for grants, assuming that District expenditures in future years are as projected. If expenditures of the District lag behind projections, as they have consistently done in the past, then additional allocations of excess funds will be recommended next fiscal year. Interest earnings for excess funds revert to the assessment grant fund and form part of the base in the determination of available excess for the following year.

It should be noted that with the expiration of Proposition 1996 in FY 2018-19, the sources of available revenues with which to declare available excess is coming to an end. Because of adjustments discussed above to assist the District, and ultimately the County, to recover administrative costs of continuing to diligently monitor and to manage unexpended funds and projects in perpetuity, the declaration of future available excess funds will depend on changes in administrative expenses and the actual delinquencies and interest and penalties thereon to be collected. Should these costs rise and/or collection of delinquencies and related revenues materialize differently than projected, it is quite possible that there may be no available excess funds to be declared in future years.

Table 2
Excess Funds Deposits (x \$1000)

Fiscal Year	Excess Funds Determined	Maintenance & Servicing Fund	Administration Fund
1999-00	8,000		
2000-01	21,149		
2001-02	11,231		
2002-03	4,096		
2003-04	-		
2004-05	9,718		
2005-06	22,970		
2006-07	15,408		
2007-08	37,868		
2008-09	22,439		
2009-10	9,602		
2010-11	26,858		
2011-12	30,941		
2012-13	36,382		
2013-14	36,047		
2014-15	47,456	5,081	1,854
2015-16	10,269	2,397	3,209
2016-17	10,593	2,648	1,457
2017-18	6,242	1,560	1,131
2018-19	19,266	4,817	6,021

	Excess Funds	Servicing Fund	Fund
2019-20	3,200	800	
2020-21	2,879	720	
2021-22			
2022-23			
2023-24			
Excess Funds	392,614	18,023	13,672

Appendix A

BENEFIT POINT SUMMARY BY USE
For FY 2018-19
Based on PDB Report Dated July 30, 2018 (After Adjustment)

Land Use	Use Code	Parcel Count	Regular Parcel Benefit Points	Parcel Count	Possessory Int. Benefit Points	Parcel Count	Mobile Homes Benefit Points	Parcel Count	Lift Parcels Benefit Points	Total Benefit Points	SubTotal Assmnt Revenue @ 5.07	Adjustment			Adj. Total Assmnt Revenue
												Parcel	Benefit Point	Assessment	
Single Family Residential	01	1,795,804	2,587,464.5884	1,885	2,298.8845	0	0.0000	38	38.0000	2,589,801.4729	\$13,130,293.47	1,186	1,186.0000	\$6,013.02	\$13,136,306.49
Single Family Vacant	01	76,259	143,759.0648	9	2.6317	0	0.0000	0	0.0000	143,761.6965	\$728,871.80	716	970.2604	\$4,919.22	\$733,791.02
Multi Family Residential	02-06	244,728	1,248,733.1888	109	9,003.8494	0	0.0000	1	1.0000	1,257,738.0382	\$6,376,731.85	104	1,381.0986	\$7,002.17	\$6,383,734.02
Multi Family Vacant	02-06	1,433	731.2223	5	24.5421	0	0.0000	0	0.0000	755.7644	\$3,831.73	0	0.0000	\$0.00	\$3,831.73
		2,118,224	3,980,688.0643	2,008	11,329.9077	0	0.0000	39	39.0000	3,992,056.9720	\$20,239,728.85	2,006	3,537.3590	\$17,934.41	\$20,257,663.26
Mobile Homes	07, 09	2,834	18,288.4968	3	204.1683	24,884	12,442.0000	0	0.0000	30,934.6651	\$156,838.75	9	318.2742	\$1,613.65	\$158,452.40
Mobile Homes Vacant	07, 09	24	70.6002	4	2.4989	0	0.0000	0	0.0000	73.0991	\$370.61	0	0.0000	\$0.00	\$370.61
		2,858	18,359.0970	7	206.6672	24,884	12,442.0000	0	0.0000	31,007.7642	\$157,209.36	9	318.2742	\$1,613.65	\$158,823.01
Comm'l/Industrial	08,10-59	129,022	1,073,951.3485	2,053	54,964.3992	0	0.0000	357	1,464.4871	1,130,380.2348	\$5,731,027.79	400	5,021.1183	\$25,457.07	\$5,756,484.86
Comm'l/Ind'l Vacant	08,10-59	66,510	288,177.8734	539	1,176.7709	0	0.0000	0	0.0000	289,354.6443	\$1,467,028.05	293	1,459.9034	\$7,401.71	\$1,474,429.76
		195,532	1,362,129.2219	2,592	56,141.1701	0	0.0000	357	1,464.4871	1,419,734.8791	\$7,198,055.84	693	6,481.0217	\$32,858.78	\$7,230,914.62
Recreational	60-69	2,089	52,973.6265	157	8,355.7941	0	0.0000	7	56.0402	61,385.4608	\$311,224.29	7	338.8817	\$1,718.13	\$312,942.42
Recreational Vacant	60-69	105	880.2193	43	155.4812	0	0.0000	0	0.0000	1,035.7005	\$5,251.00	0	0.0000	\$0.00	\$5,251.00
		2,194	53,853.8458	200	8,511.2753	0	0.0000	7	56.0402	62,421.1613	\$316,475.29	7	338.8817	\$1,718.13	\$318,193.42
Institutional	70-83	8,989	102,063.1375	246	1,662.5797	0	0.0000	3	28.0202	103,753.7374	\$526,031.45	32	1,485.6469	\$7,532.23	\$533,563.68
Institutional Vacant	70-83	413	1,138.8343	20	31.2085	0	0.0000	0	0.0000	1,170.0428	\$5,932.12	2	11.6489	\$59.06	\$5,991.18
		9,402	103,201.9718	266	1,693.7882	0	0.0000	3	28.0202	104,923.7802	\$531,963.57	34	1,497.2959	\$7,591.29	\$539,554.86
FY 15/16 Total		2,328,210	5,518,232.2008	5,073	77,882.8085	24,884	12,442.0000	406	1,587.5475	5,610,144.5568	\$28,443,432.90	2,749	12,172.8323	\$61,716.26	\$28,505,149.16

RECAP:

Developed Residential	2,071,585	3,881,359.55	COMPARISON	2018/19	2017/18	Difference
Undeveloped Residential	78,450	145,560.82		(After Adjustment)		
Developmnet Non-Residential	143,362	1,302,365.08	Parcels	2,361,322	2,355,941	5,381
Undeveloped Non-Residential	67,925	293,031.94	Benefit Points	5,622,317.3891	5,596,158.9765	26,158.4126
Total	2,361,322	5,622,317.39	Total Revenue	\$28,505,149.16	\$28,372,526.01	\$132,623.15

PDB Report (Secured Tax Roll)	\$28,505,149.16
Auditor Controller (Original Levy)	\$28,505,146.71
Loss Benefit Points (\$):	\$2.45
Loss Benefit Points (%):	0.000009%

PART 2

Plan of Revenues and Expenditures Model

LOS ANGELES COUNTY
Regional Park and Open Space District
Plan of Revenue and Expenditure
 Assumptions

PROGRAM DETAILS	
Program Size	\$ 859,000,000.00
Assessment Start Year - Prop A (1992)	1994
Assessment End Year - Prop A (1992)	2015
Assessment Rate - Prop A (1992)	\$ 9.39
Assessment Start Year - Prop A (1996)	1998
Assessment End Year - Prop A (1996)	2019
Assessment Rate - Prop A (1996)	\$ 5.07
Assessment Allocations	
Debt Service and Projects	80.00%
Maintenance and Servicing	15.00%
Administration	5.00%
Total Allocations :	100.00%
Available Excess Fund Allocations	
Excess Funds	80.00%
Administration	0.00%
Recycled for Future Years	20.00%
Total Allocations :	100.00%
Excess Fund Allocations	
Projects	80.00%
Maintenance and Servicing	20.00%
Total Allocations :	100.00%
Residential Benefit Point Growth Assumption	0.19%
Commercial/Industrial Benefit Point Growth Assumption	0.03%
Assessment Appeal Rate	0.192%
Assessment Delinquencies	
Delinquency Rate	1.94%
Delinquency Penalty (one time)	10.00%
Delinquency Annual Interest	18.00%
Collection Rate - Year 1	45.00%
Collection Rate - Year 2	22.00%
Collection Rate - Year 3	11.00%
Collection Rate - Year 4	9.00%
Collection Rate - Year 5	4.00%
PDB Report (Levy Enrolled)	\$ 28,505,149
Auditor-Controller (Original Levy)	28,505,147
Loss Levy (\$) :	\$ 2
Loss Levy (%) :	0.000009%

Maintenance and Servicing Lag (years to completion) 6

EARNINGS RATE	
Generic Earnings Assumption	1.50%
Generic Debt Service Reserve Earnings Assumption	2.50%
Assessment Interest Rate (and any Group	4.50%

BOND FINANCING INFORMATION			
Arbitrage Yield - 1994			6.095090%
Arbitrage Yield - 1997			5.052990%
Arbitrage Yield - 2005A			3.496079%
PROJECT EXPENDITURES			
Fiscal Year	Funded From Bond Proceeds	Funded From Assessments	Total Expenditures
1994	\$ 17,210,330	\$ 28,081,085	\$ 45,291,414
1995	35,685,970	11,621,970	47,307,940
1996	52,051,661	11,654,985	63,706,645
1997	58,080,234	23,488,815	81,569,049
1998	56,766,423	6,850,197	63,616,620
1999	56,452,871	10,674,885	67,127,757
2000	66,958,516	3,448,817	70,407,333
2001	75,178,967	7,876,957	83,055,924
2002	57,993,942	1,018,340	59,012,282
2003	40,344,036	3,354,381	43,698,417
2004	36,198,429	1,839,907	38,038,336
2005	758,000	30,066,588	30,824,588
2006	0	22,176,634	22,176,634
2007	0	20,553,957	20,553,957
2008	0	10,996,860	10,996,860
2009	0	26,000,246	26,000,246
2010	0	11,745,844	11,745,844
2011	0	5,504,605	5,504,605
2012	0	8,071,575	8,071,575
2013	(1,972,374)	5,000,885	3,028,511
2014	(3,425)	5,056,405	5,052,980
2015	1,975,799	7,521,038	9,496,836
2016	0	2,339,358	2,339,358
2017	0	6,948,388	6,948,388
2018	0	7,224,535	7,224,535
2019	0	2,090,012	2,090,012
2020	0	4,210,923	4,210,923
2021	0	19,902,431	19,902,431
2022	0	0	0
2023	0	0	0
2024	0	0	0
2025	0	0	0
2026	0	0	0
2027	0	0	0
2028	0	0	0
2029	0	0	0
Totals :	\$ 553,679,379	\$ 305,320,621	\$ 859,000,000

LOS ANGELES COUNTY
Regional Park and Open Space District
Plan of Revenue and Expenditure
Aggregate Debt Service

Date	2005A Actual Paid Principal	2007A Actual Paid Principal	2005A Actual Paid Interest	2007A Actual Paid Interest	2005A Actual Paid Debt Service	2007A Actual Paid Debt Service	Total Actual Paid Debt Service	2005A Actual Paid Annual D/S	2007A Actual Paid Annual D/S	Total Actual Paid Annual D/S	Original Par 10.00%	Average Annual Debt Service 125.00%	Greatest Six Month Debt Service	Total DSRF Requirement	Total October 1 Debt Service
Totals : >>	181,220,000	94,315,000	75,546,789	27,875,790	256,766,789	122,190,790	822,696,250	256,766,789	122,190,790	822,696,250					663,939,018
05/01/1994														14,718,700	
04/01/1995							9,285,955								
10/01/1995							6,540,066	0		15,826,021				14,718,700	6,540,066
04/01/1996							5,038,148								
10/01/1996							10,113,148	0		15,151,295				14,718,700	10,113,148
04/01/1997							4,927,132								
10/01/1997							10,222,132	0		15,149,264				37,516,680	10,222,132
04/01/1998							11,067,178								
10/01/1998							37,610,613	0		48,677,791				37,516,680	37,610,613
04/01/1999							12,672,363								
10/01/1999							36,007,363	0		48,679,726				37,516,680	36,007,363
04/01/2000							12,088,988								
10/01/2000							36,588,988	0		48,677,976				37,516,680	36,588,988
04/01/2001							11,476,488								
10/01/2001							37,201,488	0		48,677,976				37,516,680	37,201,488
04/01/2002							10,833,363								
10/01/2002							28,393,363	0		39,226,726				37,516,680	28,393,363
04/01/2003							10,351,113								
10/01/2003							28,876,113	0		39,227,226				37,516,680	28,876,113
04/01/2004							9,832,041								
10/01/2004							29,397,041	0		39,229,081				37,516,680	29,397,041
04/01/2005			1,132,252		1,132,252		5,553,142								
10/01/2005	3,505,000		4,430,550		7,935,550		32,831,441	9,067,802		38,384,583				35,479,278	32,831,441
04/01/2006			4,377,975		4,377,975		8,298,897								
10/01/2006	0		4,377,975		4,377,975		29,773,897	8,755,950		38,072,794				35,479,278	29,773,897
04/01/2007			4,377,975		4,377,975		7,721,756								
10/01/2007	0	2,035,000	4,377,975	1,126,540	4,377,975	3,161,540	30,777,697	8,755,950	3,161,540	38,499,453	27,553,500	36,537,888	34,384,569	27,553,500	30,777,697
04/01/2008			4,377,975	2,307,000	4,377,975	2,307,000	6,684,975				27,553,500	36,376,702	34,384,569		
10/01/2008	15,190,000	7,930,000	4,377,975	2,307,000	19,567,975	10,237,000	29,804,975	23,945,950	12,544,000	36,489,950	27,553,500	35,680,350	34,384,569	27,553,500	29,804,975
04/01/2009			4,028,225	2,108,750	4,028,225	2,108,750	6,136,975				27,553,500	35,537,089	34,384,569		
10/01/2009	15,885,000	8,330,000	4,028,225	2,108,750	19,913,225	10,438,750	30,351,975	23,941,450	12,547,500	36,488,950	27,553,500	34,839,706	34,384,569	27,553,500	30,351,975
04/01/2010			3,654,350	1,900,500	3,654,350	1,900,500	5,554,850				27,553,500	34,529,680	34,384,569		
10/01/2010	16,635,000	8,740,000	3,654,350	1,900,500	20,289,350	10,640,500	30,929,850	23,943,700	12,541,000	36,484,700	27,553,500	33,835,323	34,384,569	27,553,500	30,929,850
04/01/2011			3,277,694	1,682,000	3,277,694	1,682,000	4,959,694				27,553,500	33,298,991	34,384,569		
10/01/2011	17,385,000	9,175,000	3,277,694	1,682,000	20,662,694	10,857,000	31,519,694	23,940,388	12,539,000	36,479,388	27,553,500	32,610,145	34,384,569	27,553,500	31,519,694
04/01/2012			2,858,069	1,452,625	2,858,069	1,452,625	4,310,694				27,553,500	31,761,461	34,384,569		
10/01/2012	18,230,000	9,625,000	2,858,069	1,452,625	21,088,069	11,077,625	32,165,694	23,946,138	12,530,250	36,476,388	27,553,500	31,087,915	34,384,569	27,553,500	32,165,694
04/01/2013			2,402,319	1,212,000	2,402,319	1,212,000	3,614,319				27,553,500	29,785,172	34,384,569		
10/01/2013	19,140,000	10,115,000	2,402,319	1,212,000	21,542,319	11,327,000	32,869,319	23,944,638	12,539,000	36,483,638	27,553,500	29,139,758	34,384,569	27,553,500	32,869,319
04/01/2014			1,923,819	959,125	1,923,819	959,125	2,882,944				27,553,500	27,148,609	34,384,569		
10/01/2014	20,095,000	10,640,000	1,923,819	959,125	22,018,819	11,599,125	33,617,944	23,942,638	12,558,250	36,500,888	27,553,500	26,547,996	34,384,569	26,547,996	33,617,944
04/01/2015			1,421,444	693,125	1,421,444	693,125	2,114,569				27,553,500	23,453,109	34,384,569		
10/01/2015	21,100,000	11,170,000	1,421,444	693,125	22,521,444	11,863,125	34,384,569	23,942,888	12,556,250	36,499,138	27,553,500	22,924,467	34,384,569	22,924,467	34,384,569
04/01/2016			893,944	413,875	893,944	413,875	1,307,819				27,553,500	17,910,406	13,971,975		
10/01/2016	7,870,000	3,845,000	893,944	413,875	8,763,944	4,258,875	13,022,819	9,657,888	4,672,750	14,330,638	27,553,500	17,501,713	13,971,975	13,971,975	13,022,819
04/01/2017			687,356	317,750	687,356	317,750	1,005,106				27,553,500	17,909,443	13,971,975		
10/01/2017	8,285,000	4,035,000	687,356	317,750	8,972,356	4,352,750	13,325,106	9,659,713	4,670,500	14,330,213	27,553,500	17,490,648	13,971,975	13,971,975	13,325,106
04/01/2018			469,875	216,875	469,875	216,875	686,750				27,553,500	17,907,781	13,971,975		
10/01/2018	8,720,000	4,235,000	469,875	216,875	9,189,875	4,451,875	13,641,750	9,659,750	4,668,750	14,328,500	27,553,500	17,478,563	13,971,975	13,971,975	13,641,750
04/01/2019			240,975	111,000	240,975	111,000	351,975				27,553,500	17,904,938	13,971,975		
10/01/2019	9,180,000	4,440,000	240,975	111,000	9,420,975	4,551,000	13,971,975	9,661,950	4,662,000	14,323,950	27,553,500	17,464,969	13,971,975	13,971,975	13,971,975

LOS ANGELES COUNTY
Regional Park and Open Space District
Plan of Revenue and Expenditure
Revenue Forecast (in thousands)

Fiscal Year (Assessment Collections)	1993-2029	1993-94	1994-95	1995-96	1996-97	1997-98	1998-99	1999-00	2000-01	2001-02	2002-03	2003-04	2004-05	2005-06	2006-07	2007-08	2008-09	2009-10	2010-11	2011-12	2012-13	2013-14	2014-15	2015-16	2016-17	2017-18	2018-19	2019-20	2020-21	2021-22	2022-23	2023-24	2024-25	2025-26	2026-27	2027-28	2028-29	
Calendar Year (Payments to Bondholders)	Totals	1994	1995	1996	1997	1998	1999	2000	2001	2002	2003	2004	2005	2006	2007	2008	2009	2010	2011	2012	2013	2014	2015	2016	2017	2018	2019	2020	2021	2022	2023	2024	2025	2026	2027	2028	2029	
1. Assessment Levy and Revenue																																						
Proposition A (1992)	\$ 1,126,896	\$ 51,238	\$ 49,646	\$ 52,081	\$ 52,021	\$ 50,023	\$ 50,045	\$ 50,153	\$ 50,261	\$ 50,397	\$ 50,559	\$ 50,841	\$ 50,807	\$ 50,897	\$ 50,910	\$ 51,526	\$ 51,992	\$ 52,013	\$ 52,148	\$ 52,398	\$ 52,393	\$ 52,250	\$ 52,297	\$ 0	\$ 0	\$ 0	\$ 0	\$ 0	\$ 0	\$ 0	\$ 0	\$ 0	\$ 0	\$ 0	\$ 0	\$ 0	\$ 0	\$ 0
Proposition A (1996)	611,260	0	0	0	0	27,009	27,021	27,079	27,138	27,211	27,299	27,451	27,433	27,481	27,488	27,821	28,073	28,084	28,157	28,291	28,289	28,211	28,237	28,306	28,304	28,373	28,505	0	0	0	0	0	0	0	0	0	0	
Sub-Total, Gross Assessment Levy	\$ 1,738,155	\$ 51,238	\$ 49,646	\$ 52,081	\$ 52,021	\$ 77,032	\$ 77,066	\$ 77,232	\$ 77,399	\$ 77,608	\$ 77,858	\$ 78,292	\$ 78,240	\$ 78,378	\$ 78,399	\$ 79,347	\$ 80,065	\$ 80,097	\$ 80,305	\$ 80,689	\$ 80,682	\$ 80,461	\$ 80,534	\$ 28,306	\$ 28,304	\$ 28,373	\$ 28,505	\$ 0	\$ 0	\$ 0	\$ 0	\$ 0	\$ 0	\$ 0	\$ 0	\$ 0	\$ 0	
Parcel Enrollment Losses	(403)	0	0	0	0	(98)	(88)	(106)	(9)	(11)	(41)	(11)	(7)	(1)	(2)	(2)	(3)	(1)	(5)	(7)	(6)	(6)	(0)	(1)	(1)	0	0	0	0	0	0	0	0	0	0	0	0	
Correction for Appeals	(7,311)	(2,025)	(243)	(238)	(259)	(371)	(224)	(191)	(258)	(356)	(245)	(381)	(165)	(200)	(133)	(146)	(254)	(123)	(127)	(413)	(378)	(176)	(182)	(61)	(43)	(54)	(65)	0	0	0	0	0	0	0	0	0	0	
Total Net Assessment Revenue :	\$ 1,730,441	\$ 49,214	\$ 49,403	\$ 51,844	\$ 51,762	\$ 76,563	\$ 76,754	\$ 76,935	\$ 77,131	\$ 77,241	\$ 77,572	\$ 77,900	\$ 78,068	\$ 78,177	\$ 78,265	\$ 79,199	\$ 79,808	\$ 79,972	\$ 80,173	\$ 80,269	\$ 80,299	\$ 80,279	\$ 80,352	\$ 28,244	\$ 28,260	\$ 28,318	\$ 28,440	\$ 0	\$ 0	\$ 0	\$ 0	\$ 0	\$ 0	\$ 0	\$ 0	\$ 0	\$ 0	
2. Payment Adjustments																																						
Current Delinquencies	\$ (61,106)	\$ (2,793)	\$ (2,324)	\$ (2,432)	\$ (2,383)	\$ (3,138)	\$ (2,961)	\$ (2,986)	\$ (2,861)	\$ (2,697)	\$ (2,539)	\$ (2,304)	\$ (2,370)	\$ (2,433)	\$ (2,964)	\$ (3,485)	\$ (3,453)	\$ (3,438)	\$ (2,481)	\$ (2,766)	\$ (2,422)	\$ (1,857)	\$ (1,749)	\$ (584)	\$ (563)	\$ (548)	\$ (575)	\$ 0	\$ 0	\$ 0	\$ 0	\$ 0	\$ 0	\$ 0	\$ 0	\$ 0	\$ 0	
3. Collection Adjustments																																						
Redemption of Delinquencies	\$ 61,037	\$ 0	\$ 1,036	\$ 1,455	\$ 1,577	\$ 2,150	\$ 2,409	\$ 2,860	\$ 2,724	\$ 2,792	\$ 2,785	\$ 3,430	\$ 3,041	\$ 2,943	\$ 2,404	\$ 2,827	\$ 3,271	\$ 3,923	\$ 3,143	\$ 2,608	\$ 2,667	\$ 2,425	\$ 2,398	\$ 1,901	\$ 1,192	\$ 1,014	\$ 936	\$ 646	\$ 250	\$ 135	\$ 74	\$ 23	\$ 0	\$ 0	\$ 0	\$ 0		
Assessment Adjustments(Refunds)*	(7,322)	\$ (420)	\$ (11)	\$ (41)	\$ (72)	\$ (656)	\$ (462)	\$ (802)	\$ (579)	\$ (731)	\$ (398)	\$ (1,541)	\$ 291	\$ (84)	\$ (115)	\$ (511)	\$ (331)	\$ (92)	\$ (389)	\$ (70)	\$ (117)	\$ (25)	\$ (0)	\$ (7)	\$ (1)	\$ (6)	\$ (2)	\$ 0	\$ 0	\$ 0	\$ 0	\$ 0	\$ 0	\$ 0	\$ 0	\$ 0		
Interest and Penalties on Delinquencies	19,979	0	198	367	498	797	752	869	935	826	925	1,269	1,126	1,202	793	805	915	1,039	884	713	808	815	815	588	567	422	421	320	140	91	58	21	0	0	0	0		
Total Collection Adjustments :	\$ 73,694	\$ (420)	\$ 1,224	\$ 1,781	\$ 2,003	\$ 2,291	\$ 2,699	\$ 2,927	\$ 3,080	\$ 2,887	\$ 3,312	\$ 3,158	\$ 4,457	\$ 4,061	\$ 3,082	\$ 3,120	\$ 3,855	\$ 4,811	\$ 3,936	\$ 2,932	\$ 3,405	\$ 3,123	\$ 3,188	\$ 2,489	\$ 1,752	\$ 1,435	\$ 1,351	\$ 965	\$ 390	\$ 226	\$ 131	\$ 44	\$ 0	\$ 0	\$ 0	\$ 0		
4. Revenues Collected																																						
Assessment Revenues Collected	\$ 1,743,029	\$ 46,000	\$ 48,302	\$ 51,193	\$ 51,381	\$ 75,716	\$ 76,492	\$ 76,876	\$ 77,351	\$ 77,430	\$ 78,345	\$ 78,753	\$ 80,155	\$ 79,805	\$ 78,382	\$ 78,834	\$ 80,211	\$ 81,345	\$ 81,628	\$ 80,436	\$ 81,281	\$ 81,545	\$ 81,790	\$ 30,149	\$ 29,449	\$ 29,205	\$ 29,216	\$ 965	\$ 390	\$ 226	\$ 131	\$ 44	\$ 0	\$ 0	\$ 0	\$ 0	\$ 0	
Interest Earnings on Assessment Collections	4,003	100	264	196	242	461	441	375	340	130	90	57	88	170	253	171	104	62	81	48	49	44	49	62	44	49	30	1	0	0	0	0	0	0	0	0		
Total Assessment Revenues and Interest Due:	1,747,031	46,100	48,566	51,389	51,623	76,177	76,933	77,251	77,690	77,560	78,435	78,810	80,244	79,975	78,635	79,006	80,315	81,407	81,709	80,484	81,330	81,589	81,839	30,211	29,493	29,254	29,246	966	390	227	132	44	0	0	0	0	0	
Adjustment for Timing of Transfers	0	(1,751)	1,356	(65)	(1,442)	1,471	(266)	(867)	875	27	11	94	(599)	(3,794)	3,420	(640)	477	(637)	(331)	(1,977)	3,522	(54)	(548)	438	(282)	12	281	356	449	261	151	51	0	0	0	0		
Total Assessment Revenues and Interest Collected :	\$ 1,747,031	\$ 44,349	\$ 49,922	\$ 51,324	\$ 50,181	\$ 77,649	\$ 76,667	\$ 76,384	\$ 78,566	\$ 77,587	\$ 78,446	\$ 78,904	\$ 79,645	\$ 76,181	\$ 82,055	\$ 78,365	\$ 80,792	\$ 80,770	\$ 81,378	\$ 78,507	\$ 84,852	\$ 81,535	\$ 81,291	\$ 30,649	\$ 29,210	\$ 29,267	\$ 29,528	\$ 1,322	\$ 839	\$ 487	\$ 283	\$ 95	\$ 0	\$ 0	\$ 0	\$ 0	\$ 0	
5. Assessment Revenue Allocations By Accounts																																						
Basic 50/50 Allocation																																						
Debt Service and Projects	\$ 1,397,792	\$ 35,480	\$ 40,073	\$ 41,072	\$ 40,145	\$ 62,119	\$ 61,334	\$ 61,107	\$ 62,853	\$ 62,070	\$ 62,757	\$ 63,124	\$ 63,716	\$ 60,945	\$ 65,644	\$ 62,692	\$ 64,634	\$ 64,619	\$ 65,002	\$ 62,921	\$ 67,882	\$ 65,228	\$ 65,033	\$ 24,519	\$ 23,368	\$ 23,413	\$ 23,622	\$ 1,057	\$ 671	\$ 390	\$ 226	\$ 76	\$ 0	\$ 0	\$ 0	\$ 0	\$ 0	
Maintenance and Servicing	261,930	6,652	7,387	7,689	7,527	11,647	11,500	11,458	11,785	11,638	11,767	11,836	11,947	11,427	12,308	11,755	12,119	12,113	12,174	11,798	12,728	12,230	12,194	4,597	4,382	4,390	4,429	198	126	73	42	14	0	0	0	0	0	
Administration	87,310	2,217	2,462	2,563	2,509	3,882	3,833	3,819	3,928	3,879	3,922	3,945	3,982	3,809	4,103	3,918	4,040	4,038	4,202	3,789	4,243	4,077	4,065	1,532	1,461	1,463	1,476	66	42	24	14	5	0	0	0	0	0	
Total Assessment Revenues and Interest Collected :	\$ 1,747,031	\$ 44,349	\$ 49,922	\$ 51,324	\$ 50,181	\$ 77,649	\$ 76,667	\$ 76,384	\$ 78,566	\$ 77,587	\$ 78,446	\$ 78,904	\$ 79,645	\$ 76,181	\$ 82,055	\$ 78,365	\$ 80,792	\$ 80,770	\$ 81,378	\$ 78,507	\$ 84,852	\$ 81,535	\$ 81,291	\$ 30,649	\$ 29,210	\$ 29,267	\$ 29,528	\$ 1,322	\$ 839	\$ 487	\$ 283	\$ 95	\$ 0	\$ 0	\$ 0	\$ 0	\$ 0	
Adjustments for Post-"Year 20" Allocations (Delayed)																																						
Debt Service and Projects	\$ (23,378)	\$ -	\$ -	\$ -	\$ -	\$ -	\$ -	\$ -	\$ -	\$ -	\$ -	\$ -	\$ -	\$ -	\$ -	\$ -	\$ -	\$ -	\$ -	\$ -	\$ -	\$ -	\$ (4,532)	\$ (5,247)	\$ (1,374)	\$ (752)	\$ (3,444)	\$ (2,843)	\$ (4,055)	\$ (390)	\$ (226)	\$ (76)	\$ -	\$ -	\$ -	\$ -	\$ -	
Maintenance and Servicing	5,703	0	0	0	0	0	0	0	0	0	0	0	0	0	0	0	0	0	0	0	0	0	0	0	0	0	0	0	0	0	0	0	0	0	0	0		
Administration	17,675	\$ -	\$ -	\$ -	\$ -	\$ -	\$ -	\$ -	\$ -	\$ -	\$ -	\$ -	\$ -	\$ -	\$ -	\$ -	\$ -	\$ -	\$ -	\$ -	\$ -	\$ -	\$ 1,685	\$ 2,608	\$ 1,293	\$ 708	\$ 3,781	\$ 2,799	\$ 3,989	\$ 348	\$ 202	\$ 62	\$ -	\$ -	\$ -	\$ -		
Total Assessment Revenues and Interest Collected :	\$ 0	\$ 0	\$ 0	\$ 0	\$ 0	\$ 0	\$ 0	\$ 0	\$ 0	\$ 0	\$ 0	\$ 0	\$ 0	\$ 0	\$ 0	\$ 0	\$ 0	\$ 0	\$ 0	\$ 0	\$ 0	\$ 0	\$ 0	\$ 0	\$ 0	\$ 0	\$ 0	\$ 0	\$ 0	\$ 0	\$ 0	\$ 0	\$ 0	\$ 0	\$ 0	\$ 0		
Adjusted Allocation																																						
Debt Service and Projects	\$ 1,374,414	\$ 35,480	\$ 40,073	\$ 41,072	\$ 40,145	\$ 62,119	\$ 61,334	\$ 61,107	\$ 62,853	\$ 62,070	\$ 62,757	\$ 63,124	\$ 63,716	\$ 60,945	\$ 65,644	\$ 62,692	\$ 64,634	\$ 64,619	\$ 65,002	\$ 62,921	\$ 67,882	\$ 65,228	\$ 65,033	\$ 24,519	\$ 23,368	\$ 23,413	\$ 23,622	\$ (1,786)	\$ (3,384)	\$ (0)	\$ 0	\$ 0	\$ 0	\$ 0	\$ 0	\$ 0		
Maintenance and Servicing	267,632	6,652	7,387	7,689	7,527	11,647	11,500	11,458	11,785	11,638	11,767	11,836	11,947	11,427	12,308	11,755	12,119	12,113	12,174	11,798	12,728	12,230	12,194	4,597	4,382	4,434	4,530	242	192	115	67	28	0	0	0	0		
Administration	104,985	2,217	2,462	2,563	2,509	3,882	3,833	3,819	3,928	3,879	3,922	3,945	3,982	3,809	4,103	3,918	4,040	4,038	4,202	3,789	4,243	4,077	4,065	1,532	1,461	1,463	1,476	66	42	24	14	5	0	0	0	0		
Total Assessment Revenues and Interest Collected :	\$ 1,747,031	\$ 44,349	\$ 49,922	\$ 51,324	\$ 50,181	\$ 77,649	\$ 76,667	\$ 76,384	\$ 78,566	\$ 77,587	\$ 78,446	\$ 78,904	\$ 79,645	\$ 76,181	\$ 82,055	\$ 78,365	\$ 80,792	\$ 80,770	\$ 81,378	\$ 78,507	\$ 84,852	\$ 81,535	\$ 81,291	\$ 30,649	\$ 29,210	\$ 29,267	\$ 29,528	\$ 1,322	\$ 839	\$ 487	\$ 283	\$ 95	\$ 0	\$ 0	\$ 0	\$ 0	\$ 0	
6. Additional Interest Earnings																																						
Bond Project Funds	\$ 77,864	\$ 1	\$ 2,419	\$ 1,037	\$ 11,753	\$ 3,337	\$ 6	\$ 31,209	\$ 11,376	\$ 10,625	\$ 3,726	\$ 1,655	\$ 717	\$ 0	\$ 0	\$ 0	\$																					

LOS ANGELES COUNTY
Regional Park and Open Space District
Plan of Revenue and Expenditure
Expenditure Forecast (in thousands)

[illegible]

2. Excess Funds Account

Pay-As-You-Go Projects	\$ 392,613	\$ 0	\$ 0	\$ 0	\$ 0	\$ 0	\$ 0	\$ 0	\$ 0	\$ 0	\$ 4,335	\$ 2,855	\$ 3,388	\$ 1,845	\$ 8,959	\$ 6,471	\$ 7,550	\$ 7,025	\$ 9,167	\$ 14,272	\$ 9,635	\$ 13,785	\$ 33,518	\$ 18,025	\$ 21,195	\$ 25,979	\$ 50,436	\$ 15,794	\$ 38,424	\$ 15,000	\$ 20,885	\$ 16,268	\$ 12,430	\$ 9,361	\$ 6,973	\$ 5,152	\$ 3,783	\$ 10,103
Cumulative Project Funding	\$ 0	\$ 0	\$ 0	\$ 0	\$ 0	\$ 0	\$ 0	\$ 0	\$ 0	\$ 0	\$ 4,335	\$ 7,190	\$ 10,578	\$ 12,423	\$ 21,382	\$ 27,853	\$ 35,403	\$ 42,428	\$ 51,595	\$ 65,867	\$ 75,503	\$ 89,288	\$ 122,806	\$ 140,831	\$ 162,026	\$ 188,004	\$ 238,440	\$ 254,235	\$ 292,658	\$ 307,658	\$ 328,543	\$ 344,811	\$ 357,241	\$ 366,602	\$ 373,575	\$ 378,726	\$ 382,510	\$ 392,613

Debt Service Structure

[illegible]

Source: Revenue and Expenditure Forecast Model ***

* Debt service requirement for given Fiscal Year includes April payment plus funds encumbered to make October payment in following Fiscal Year

** 1997 and 2005A par amounts include proceeds escrowed for refunding of 1994 and 1997 bond issues, respectively

*** Revenues for expenditures in excess of proposition specified \$859 million improvements projected in Excess Funds Account

[illegible]

LOS ANGELES COUNTY
Regional Park and Open Space District
Plan of Revenue and Expenditure
Cash Flow Summary (in thousands)

Fiscal Year (Assessment Collections)	1993-2029	1993-94	1994-95	1995-96	1996-97	1997-98	1998-99	1999-00	2000-01	2001-02	2002-03	2003-04	2004-05	2005-06	2006-07	2007-08	2008-09	2009-10	2010-11	2011-12	2012-13	2013-14	2014-15	2015-16	2016-17	2017-18	2018-19	2019-20	2020-21	2021-22	2022-23	2023-24
Calendar Year (Payments to Bondholders)	Totals	1994	1995	1996	1997	1998	1999	2000	2001	2002	2003	2004	2005	2006	2007	2008	2009	2010	2011	2012	2013	2014	2015	2016	2017	2018	2019	2020	2021	2022	2023	2024
I. Consolidated Debt Service & Project Account																																
Beginning Balance	\$	0	\$ 146,860	\$ 130,062	\$ 96,814	\$ 56,350	\$ 331,969	\$ 283,532	\$ 267,179	\$ 218,895	\$ 159,694	\$ 142,392	\$ 133,879	\$ 125,197	\$ 113,419	\$ 118,450	\$ 109,697	\$ 97,306	\$ 109,192	\$ 110,521	\$ 104,175	\$ 99,835	\$ 91,835	\$ 58,041	\$ 57,958	\$ 48,530	\$ 43,179	\$ 34,252	\$ 26,153	\$ 0	\$ 0	\$ 0
Collections																																
Assessment Revenues	\$ 1,397,792	\$ 35,480	\$ 40,073	\$ 41,072	\$ 40,145	\$ 62,119	\$ 61,334	\$ 61,107	\$ 62,853	\$ 62,070	\$ 62,757	\$ 63,124	\$ 63,716	\$ 60,945	\$ 65,644	\$ 62,692	\$ 64,634	\$ 64,619	\$ 65,002	\$ 62,921	\$ 67,882	\$ 65,228	\$ 65,033	\$ 24,519	\$ 23,368	\$ 23,413	\$ 23,622	\$ 1,057	\$ 671	\$ 390	\$ 226	\$ 76
Interest Earnings	105,425	46	551	1,800	2,656	3,690	4,330	5,746	6,610	4,707	3,326	2,273	4,294	8,796	12,148	12,210	6,203	3,399	3,469	2,686	1,972	2,672	1,600	2,538	2,854	773	2,179	1,898	0	0	0	0
Sub-Total, Revenues from Assessments :	\$ 1,503,217	\$ 35,525	\$ 40,624	\$ 42,872	\$ 42,801	\$ 65,809	\$ 65,664	\$ 66,853	\$ 69,463	\$ 66,776	\$ 66,083	\$ 65,396	\$ 68,010	\$ 69,741	\$ 77,792	\$ 74,903	\$ 70,837	\$ 68,018	\$ 68,471	\$ 65,607	\$ 69,854	\$ 67,900	\$ 66,632	\$ 27,057	\$ 26,222	\$ 24,187	\$ 25,801	\$ 2,956	\$ 671	\$ 390	\$ 226	\$ 76
Bond Proceeds	\$ 473,693	\$ 156,626	\$ 0	\$ 0	\$ 0	\$ 317,067	\$ 0	\$ 0	\$ 0	\$ 0	\$ 0	\$ 0	\$ 0	\$ 0	\$ 0	\$ 0	\$ 0	\$ 0	\$ 0	\$ 0	\$ 0	\$ 0	\$ 0	\$ 0	\$ 0	\$ 0	\$ 0	\$ 0	\$ 0	\$ 0	\$ 0	\$ 0
Reserve Fund Earnings and Releases	14,314	0	0	0	0	0	0	0	0	0	0	0	0	0	0	0	0	0	0	0	0	0	4,629	8,952	0	0	0	0	732	0	0	0
Arbitrage Rebate Reserve Deposits and Earn	4,248	0	0	0	0	0	0	2,971	911	316	48	2	0	0	0	0	0	0	0	0	0	0	0	0	0	0	0	0	0	0	0	0
Interest Earnings on Bond Proceeds	77,575	0	2,312	1,037	11,753	3,337	6	31,209	11,376	10,625	3,726	1,655	536	0	0	0	0	0	0	0	0	0	0	0	0	0	0	0	0	0	0	0
Sub-Total, Revenues from Bonds :	\$ 569,830	\$ 156,626	\$ 2,312	\$ 1,037	\$ 11,753	\$ 320,404	\$ 6	\$ 34,180	\$ 12,287	\$ 10,941	\$ 3,774	\$ 1,657	\$ 536	\$ 0	\$ 0	\$ 0	\$ 0	\$ 0	\$ 0	\$ 0	\$ 0	\$ 0	\$ 4,629	\$ 8,952	\$ 0	\$ 0	\$ 0	\$ 0	\$ 732	\$ 0	\$ 0	\$ 0
Allocation from M&S Fund	\$ 44,200	\$ 0	\$ 3,400	\$ 1,700	\$ 1,700	\$ 1,700	\$ 1,700	\$ 1,700	\$ 1,700	\$ 1,700	\$ 1,700	\$ 1,700	\$ 1,700	\$ 1,700	\$ 1,700	\$ 1,700	\$ 1,700	\$ 1,700	\$ 1,700	\$ 1,700	\$ 1,700	\$ 1,700	\$ 1,700	\$ 1,700	\$ 1,700	\$ 1,700	\$ 1,700	\$ 0	\$ 0	\$ 0	\$ 0	\$ 0
Total Collections Available :	\$ 192,151	\$ 193,196	\$ 175,672	\$ 153,068	\$ 444,263	\$ 399,339	\$ 386,264	\$ 350,629	\$ 298,313	\$ 231,250	\$ 211,14																					

Attachment II

Los Angeles County
Regional Park and Open Space District
STATUS OF EXCESS FUNDS BEFORE NEW EXCESS
As of March 31, 2021

Allocation Category	Cumulative Allocations	Total Board Allocation	Unallocated Balance
1st District			
"Big 5" *	35,335,274	35,057,713	277,562
Cities	17,667,637	16,223,657	1,443,980
County	17,667,637	17,666,348	1,289
Competitive	7,852,283	6,668,156	1,184,128
District Total	78,522,832	75,615,874	2,906,958
2nd District			
"Big 5" *	35,335,274	35,335,274	-
Cities	17,667,637	17,667,637	-
County	17,667,637	17,107,671	559,966
Competitive	7,852,283	7,852,283	-
District Total	78,522,832	77,962,866	559,966
3rd District			
"Big 5" *	38,232,975	34,973,955	3,259,019
Cities	17,167,637	13,921,152	3,246,485
County	17,667,637	17,291,360	376,277
Competitive	5,454,583	4,336,347	1,118,236
District Total	78,522,832	70,522,815	8,000,017
4th District			
"Big 5" *	32,437,574	32,007,225	430,350
Cities	18,167,637	18,021,699	145,939
County	17,667,637	17,165,027	502,610
Competitive	10,249,983	9,976,749	273,235
District Total	78,522,832	77,170,699	1,352,133
5th District			
"Big 5" *	35,335,274	32,835,354	2,499,921
Cities	17,667,637	15,701,580	1,966,057
County	17,667,637	16,777,619	890,019
Competitive	7,852,283	7,190,463	661,820
District Total	78,522,832	72,505,016	6,017,816
Total			
"Big 5" *	176,676,372	170,209,521	6,466,851
Cities	88,338,186	81,535,725	6,802,461
County	88,338,186	86,008,025	2,330,161
Competitive	39,261,416	36,023,998	3,237,418
District Total	392,614,160	373,777,269	18,836,891

* Highest priority regional open space and recreation projects

Unallocated balance recommended for reallocation

\$ 18,836,891

Attachment III

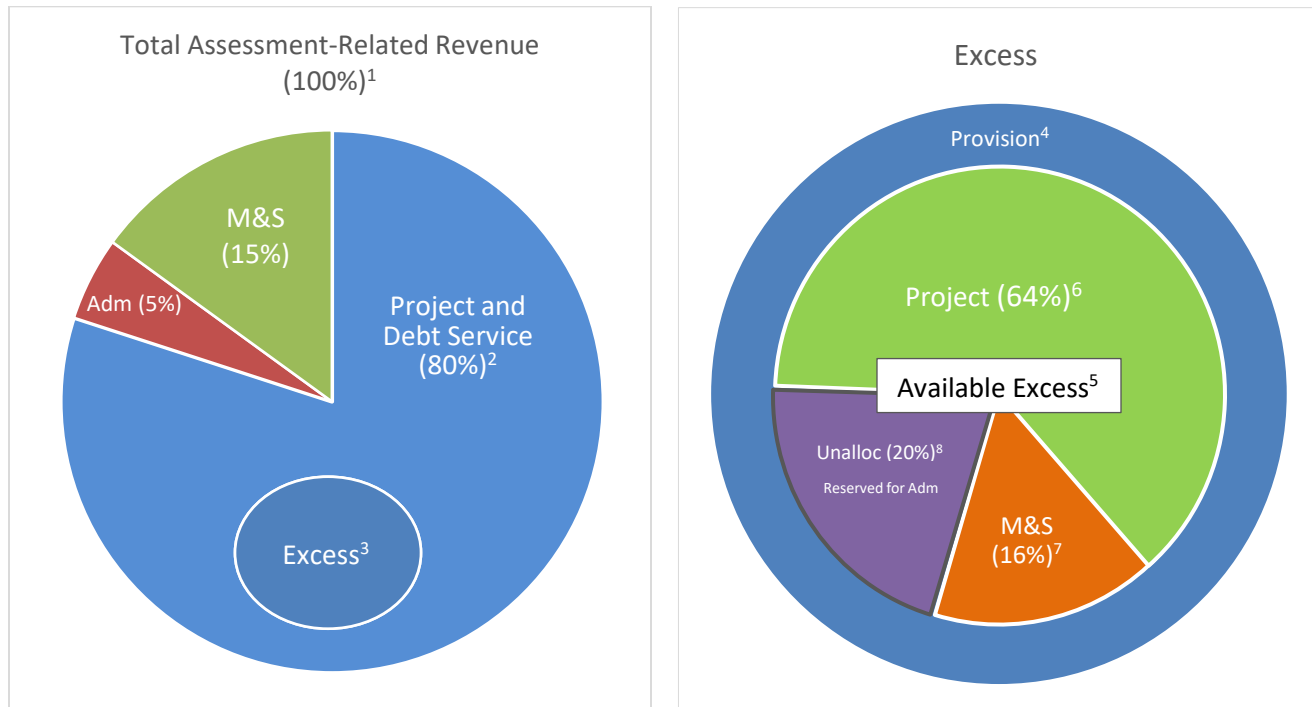
Los Angeles County
Regional Park and Open Space District
STATUS OF EXCESS FUNDS WITH NEW EXCESS
As of March 31, 2021

	A	B	C = A+B	D	E = C-D
Allocation Category	Cumulative Allocations	2021 New Excess	Total Available	Cumulative Allocated	New Balance Available
1st District					
"Big 5" *	35,335,274	-	35,335,274	35,057,713	277,562
Cities	17,667,637	-	17,667,637	16,223,657	1,443,980
County	17,667,637	-	17,667,637	17,666,348	1,289
Competitive	7,852,283	-	7,852,283	6,668,156	1,184,128
District Total	78,522,832	-	78,522,832	75,615,874	2,906,958
2nd District					
"Big 5" *	35,335,274	-	35,335,274	35,335,274	-
Cities	17,667,637	-	17,667,637	17,667,637	-
County	17,667,637	-	17,667,637	17,107,671	559,966
Competitive	7,852,283	-	7,852,283	7,852,283	-
District Total	78,522,832	-	78,522,832	77,962,866	559,966
3rd District					
"Big 5" *	38,232,975	-	38,232,975	34,973,955	3,259,019
Cities	17,167,637	-	17,167,637	13,921,152	3,246,485
County	17,667,637	-	17,667,637	17,291,360	376,277
Competitive	5,454,583	-	5,454,583	4,336,347	1,118,236
District Total	78,522,832	-	78,522,832	70,522,815	8,000,017
4th District					
"Big 5" *	32,437,574	-	32,437,574	32,007,225	430,350
Cities	18,167,637	-	18,167,637	18,021,699	145,939
County	17,667,637	-	17,667,637	17,165,027	502,610
Competitive	10,249,983	-	10,249,983	9,976,749	273,235
District Total	78,522,832	-	78,522,832	77,170,699	1,352,133
5th District					
"Big 5" *	35,335,274	-	35,335,274	32,835,354	2,499,921
Cities	17,667,637	-	17,667,637	15,701,580	1,966,057
County	17,667,637	-	17,667,637	16,777,619	890,019
Competitive	7,852,283	-	7,852,283	7,190,463	661,820
District Total	78,522,832	-	78,522,832	72,505,016	6,017,816
Total					
"Big 5" *	176,676,372	-	176,676,372	170,209,521	6,466,851
Cities	88,338,186	-	88,338,186	81,535,725	6,802,461
County	88,338,186	-	88,338,186	86,008,025	2,330,161
Competitive	39,261,416	-	39,261,416	36,023,998	3,237,418
District Total	392,614,160	-	392,614,160	373,777,269	18,836,891

NEW EXCESS FUNDS FOR DEPOSIT IN FY2021-22**UNALLOCATED FUNDS RECOMMENDED FOR REALLOCATION****18,836,891**

* Highest priority regional open space and recreation projects

PROP A – Proposed Allocations as of March 31, 2021



¹ Include assessment collected, delinquencies, interest and penalties and investment earnings in assessment fund.

² Total Assessment-Related Revenue (100%) less M&S Allocation (15%) less Admin Allocation (5%). After twenty years of Prop A, the Admin Allocation will follow the actual cost of Admin fund if it is more than 5% of the Total Assessment-Related Revenue. Likewise, M&S allocation will be increased to 20%. As a result, revenue to fund the capital projects and debt service can go below 80%.

³ Project and Debt Service Allocation (80%) less amounts expended for debt service and capital outlay excluding capital outlay funded with bond proceeds or other borrowed funds.

⁴ Provision of fund to ensure the District's ability to fully finance all capital outlay projects funded by Prop A 1992 and 1996 by the end of fiscal year 2008-09 and ability to issue or fully repay bonds, notes or other evidences of indebtedness, in future years.

⁵ Portion of the Excess determined by the Independent Financial Consultant as available in the next fiscal year without impairing the District's ability to fully finance all capital outlay projects funded by Prop A 1992 and 1996 by the end of fiscal year 2008-09 and ability to issue or fully repay bonds, notes or other evidences of indebtedness, in future years. Maximum 80% of this may be allocated.

⁶ 64% (80% of the 80%) of Available Excess shall be allocated for capital projects.

⁷ 16% (20% of the 80%) of Available Excess shall be allocated for maintenance and servicing of those capital projects funded by the Available Excess. This M&S allocation will be implemented after the twenty years of Prop A 92.

⁸ The Plan reserves the entire 20% unallocated Available Excess for the District's Administrative Fund.