

Technical Assistance Program – Workshop

Park Eligible Entities, Non-profits, Community-based Organizations & Schools

Measure A: Safe, Clean Neighborhood Parks, Open Space,
Beaches, Rivers Protection, and Water Conservation Act of 2016

Christina Angeles – District Administrator
Narineh Nersessian – Manager, Administrative Section
Agie Jordan III – Manager, Grants Section
Jack Sahl – TAP Project Manager & FUSE Executive Advisor

Los Angeles County Regional Park and Open Space District



March 4th, 9th, and 11th, 2021

Meeting Objectives and Ground Rules

This is a RPOSD TAP Workshop for Eligible Park Entities that serve ‘high-need’ or ‘very-high-need’ communities. We will provide:

1. Roadmap for RPOSD Measure A Technical Assistance Program (TAP);
2. Overview of TAP Consulting Services;
3. Background on the RPOSD TAP Request for Statement of Qualifications

Ground Rules:

1. Must register in advance;
2. Participant telephone will be muted;
3. Written questions will be accepted at TAP@RPOSD.LACounty.gov



Technical Assistance Program – Workshop Park Eligible Entities, Non-profits, Community-based Organizations & Schools

Topic	Presenter
1. Welcome & Introductions	Norma Garcia-Gonzalez Christina Angeles
2. Measure A <ul style="list-style-type: none"> a) Measure A Funding Categories b) Park Eligible Entities and Eligible Projects c) Los Angeles County Park Needs Assessment 	Jack Sahl
3. Technical Assistance Program <ul style="list-style-type: none"> a) Objectives b) Grantmaking Information and Resources c) Scope of RPOSD Technical Assistance Program 	Narineh Nersessian
4. Professional Services & Consulting <ul style="list-style-type: none"> a) Needs Assessment For Technical Services & Consulting b) RFSQ, Qualified Vendors, and Qualified Contractors c) Obtaining Technical Assistance Services & Consulting 	Jack Sahl
5. The Park Development Continuum and Closing <ul style="list-style-type: none"> a) Technical Assistance Across the Continuum b) Next Steps 	Narineh Nersessian



Just as park need varies throughout the county, so does:

1. Understanding the value of parks to the community;
2. Knowledge of the resources that Measure A provides;
3. Commitment to work with and engage the affected community;
4. Access to additional funding to leverage Measure A funds;
5. Familiarity with the RPOSD Grant Application process;
6. Appreciation of the complexity of well-designed parks;
7. Ability to successfully manage projects to completion;
8. Ability to successfully operate and maintain completed projects.



¹ LACountyParksNeeds.org

Technical Assistance Program – Workshop Park Eligible Entities, Non-profits, Community-based Organizations & Schools

Welcome

Norma Garcia-Gonzalez – Director

Los Angeles County Regional Park and Open Space District
Los Angeles County Department of Parks and Recreation

I am pleased to welcome you to the RPOSD Technical Assistance Workshop for Professional services and consulting. We are committed to helping all communities use Measure A funding to build new parks, improve access to parks, maintain existing recreation programs, and add new programs. However, making sure the communities with the highest need successfully develop park projects and obtain funding is our priority. Identifying and making available specific consulting experts is a key part of our Technical Assistance Program. We appreciate your participation in this Workshop and look forward to more parks and better programs throughout Los Angeles County.



Technical Assistance Program – Workshop Park Eligible Entities, Non-profits, Community-based Organizations & Schools

Welcome and Introductions

Christina Angeles – District Administrator

Los Angeles County Regional Park and Open Space District

“In 2016, voters passed Measure A with a strong majority – making clear that investments in green spaces are important for families, environmental health, social equity. Continuing to put Measure A into action, and empowering our communities with resources, will contribute to our commitment of ensuring Angelenos have equal access to safe, healthy, and welcoming open-spaces and recreation. Our Technical Assistance Program provides specialized and targeted consulting services to those communities with the highest park need. This Workshop will provide you with information about the RPOSD TAP. We appreciate your participation. More information about Measure A, the Technical Assistance Program, and our Team can be found on our WebPage “RPOSD.LACounty.gov”.

I am pleased to introduce the team that will be making the presentations:

Narineh Nersessian, Manager, Administration Section

Jack Sahl, TAP Project Manager.

Thank-you! Jack will start the presentation.



Los Angeles County Safe, Clean Neighborhood Parks and Beaches Measure of 2016

Key Attributes of Measure A

- 1. Focus on Addressing Park Equity in Los Angeles County;
- 2. Includes Competitive Grant Funding Categories;
- 3. Requires Park Development Technical Assistance Program (TAP)
- 4. Continues Until Rescinded By Los Angeles County Voters

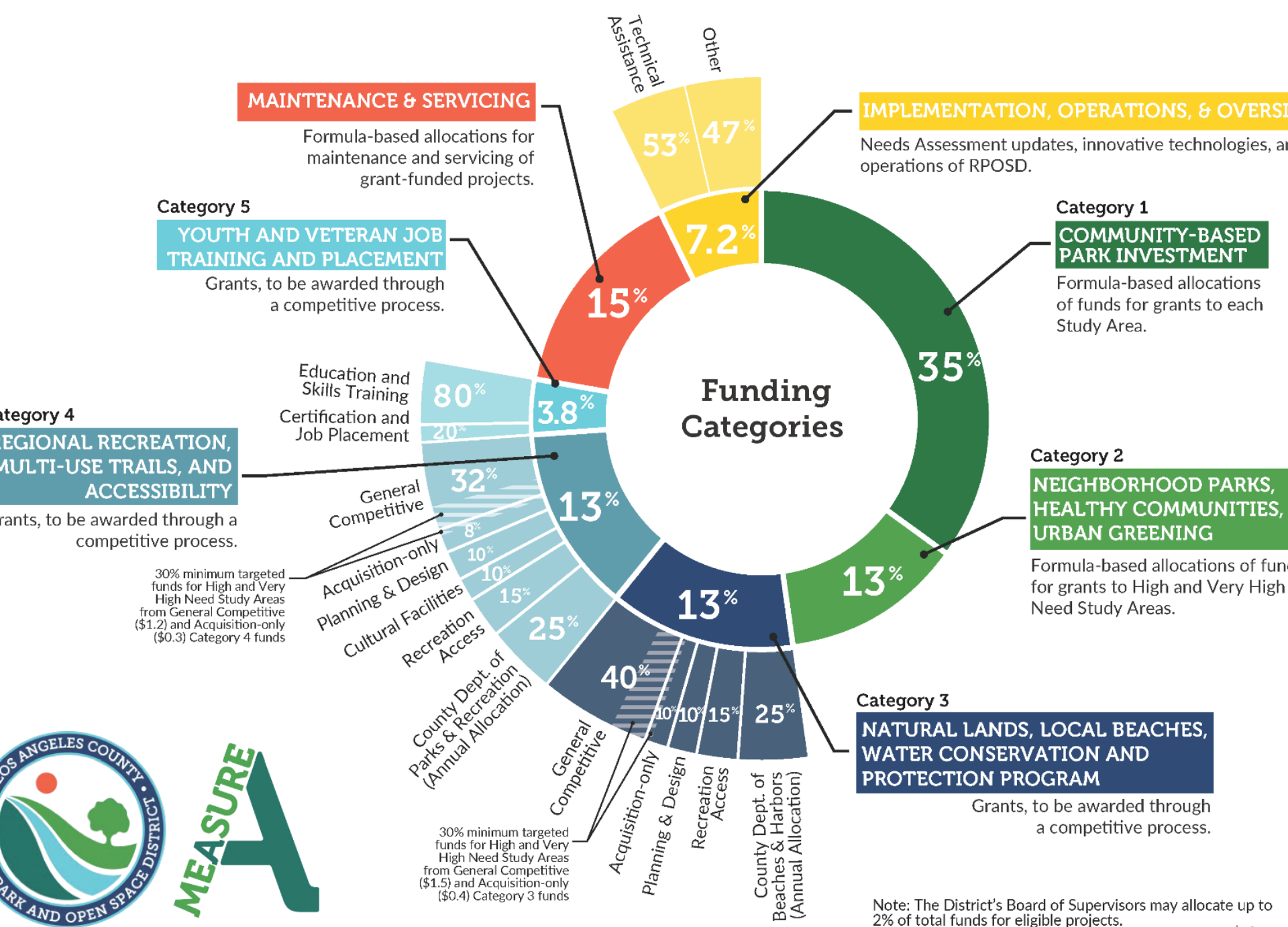
73% Voter Approval!





MEASURE A

Funding Categories



MAINTENANCE & SERVICING

Formula-based allocations for maintenance and servicing of grant-funded projects.

**Category 5
YOUTH AND VETERAN JOB TRAINING AND PLACEMENT**

Grants, to be awarded through a competitive process.

**Category 4
REGIONAL RECREATION, MULTI-USE TRAILS, AND ACCESSIBILITY**

Grants, to be awarded through a competitive process.

30% minimum targeted funds for High and Very High Need Study Areas from General Competitive (\$1.2) and Acquisition-only (\$0.3) Category 4 funds

IMPLEMENTATION, OPERATIONS, & OVERSIGHT

Needs Assessment updates, innovative technologies, and operations of RPOSD.

**Category 1
COMMUNITY-BASED PARK INVESTMENT**

Formula-based allocations of funds for grants to each Study Area.

**Category 2
NEIGHBORHOOD PARKS, HEALTHY COMMUNITIES, URBAN GREENING**

Formula-based allocations of funds for grants to High and Very High Need Study Areas.

**Category 3
NATURAL LANDS, LOCAL BEACHES, WATER CONSERVATION AND PROTECTION PROGRAM**

Grants, to be awarded through a competitive process.

Note: The District's Board of Supervisors may allocate up to 2% of total funds for eligible projects.

Park Eligible Entities

1. Eligible Park Development Entities
 - a) Cities, Unincorporated Areas in Los Angeles County, Joint Power Authorities
 - b) Non-profits with park development mission
 - c) Community Based Organizations
 - d) Schools
2. Must Register On RPOSD Grants Management System (GMS)
3. Eligible Entity Must Maintain 'Good Standing'



Los Angeles County Park Needs Assessment¹ (2016)

Park Metrics

- 1. Park Land How many acres of park are there per 1,000 people in the Study Area?

- 2. Park Access What % of the population live within ½ mile of a park?

- 3. Park Pressure How much park land is available to residents In the area around each park?

- 4. Park Amenities What amenities are available in each park in the study area?

- 5. Park Condition Is the park in 'good', 'fair', or 'poor' condition?



¹ LACountyParksNeeds.org

Park ‘High-Need’ or ‘Very-High-Need’ Communities

City of Los Angeles (28)

Arleta -- Pacoima	High
Baldwin Hills– Leimert Hills	High
Boyle Heights	Very High
Canoga Park	Very High
Central City	Very High
Central City – North	High
Exposition Park – University Park	Very High
Harbor Gateway	High
Hollywood South	Very High
Mission Hills	Very High
North Hollywood	Very High
Northridge	High
Palms– Mar Vista	Very High
Reseda -- West Van Nuys	High
South Los Angeles	Very High
Southeast Los Angeles	Very High
Southeast Los Angeles – North	Very High
Sun Valley – La Tuna Canyon	High
Valley Glen	High
Van Nuys – North Sherman Oaks	Very High
Venice	Very High
West Adams	Very High
Westlake	Very High
Westwood – Veterans Center	Very High
Westchester – Playa del Rey/LAX	High
West Los Angeles	High
Wilshire	High
Wilshire West	High

Los Angeles County -- Unincorporated (14)

Charter Oak Islands	High
Del Aire	High
West Carson	Very High
Willowbrook	High
Bassett -- West Puente Valley	Very High
East Los Angeles – Northwest	Very High
East Los Angeles – Southwest	Very High
East Rancho Dominguez	Very High
East San Gabriel -- Arcadia	Very High
Florence -- Firestone	Very High
Hawthorne	Very High
Lennox	Very High
Walnut Park	Very High
West Athens	Very High

City of Long Beach (3)

Long Beach North	High
Long Beach South	High
Long Beach West	Very High



Cities With Park ‘High-Need’ or ‘Very-High-Need’ Communities *(Continued)*

City	Park Need Designation
Alhambra	High
Artesia	High
Baldwin Park	Very High
Bell	Very High
Bell Gardens	Very High
Bellflower	Very High
Carson	High
Compton	High
Cudahy	Very High
Downey	High
El Monte	Very High
Gardena	High
Glendale, Southside	Very High
Hawthorne	Very High
Inglewood	Very High
La Puente	High
Lawndale	Very High
Lynwood	High
Maywood	Very High
Norwalk	High
Paramount	Very High
San Fernando	High
South Gate	Very High
Temple City	High
Torrance, North	High
West Hollywood	Very High



RPOSD TAP Objectives

1. Ensure that all Study Areas throughout the County, and especially park ‘High-Need’ or ‘Very-High-Need’ communities, are well informed regarding available Measure A annual allocations and competitive grant opportunities, TAP as a resource, and the steps required to receive these resources;
2. Maximize participation in Measure A from park ‘High-Need’ or ‘Very-High-Need’ communities by providing proactive and flexible technical assistance throughout the grant continuum to help with applying for funding, administering grants, and completing and maintaining projects;
3. Create and support relationships between agencies/organizations, community-based organizations, and professionals/mentors throughout the County;
4. Support organizational capacity-building among eligible entities; and
5. Emphasize delivering completed projects to park users in park need communities.



¹ LACountyParksNeeds.org

Scope of RPOSD Technical Assistance Program

		Category	Examples
Technical Assistance Program (TAP)	Information	RPOSD WebPage	Intro to RPOSD; Contact Lists; Program Updates; Linkages; RPOSD Developments
		Grants Officers	GMS Enrollment; Good Standing; Referrals; One-to-one Assistance With Existing Grants;
		Parks Portal	GIS & Mapping; Parks Inventory;
	Resource	Workshops	Introduction to Measure A; Grant Eligibility and Funding Categories; Introduction to Park Planning; TAP Program & Availability; Deliver Specific Technical Resources.
		Toolkits	Enrollment and Quick Start Guide; Grant Application Quick Start Guide; Cost Estiment Catalog; Park Stock Photo Database; GIS Parks Data Viewer; Community Outreach and Engagement Resources; Displacement Avoidance Resource; Topical Handbooks.
		Directories	Professional Consultants; Mentors; Funding Resources; Networks; External Resources
	Services	Consulting	Curated professional consultants to deliver services and assistance for all park development stages: Community Outreach & Engagement; Innovation; Incubation & Development; Multi-benefits; Energy and Water Efficiency; Climate and Resiliency; Access; Park Planning and Design; Park Amenities and Services; Grant Writing and Application; Project & Construction Management; Maintenance and Servicing; GIS; Project Evaluation; Reporting; Performance Metrics.
		Planning and Design	Planning and Design Funds; Park Master Plans; Feasibility Studies; CEQA and Environmental Permits; Site Plans or Studies; Construction Documents.



Scope of RPOSD Technical Assistance Program *(Continued)*

Category

Examples

Technical Assistance Program (TAP)

Partners

Advisors	Measure A Implementation Steering Committee; Grant Application Review Panels
Mentors	Public Agency Park Professionals; Professional Volunteer; City Parks Alliance
Qualified Vendors	RPOSD Qualified TAP Park Development Professional Services Consultants
Qualified Contractors	RPOSD Qualified TAP Park Development Professional Services Consultants with Master Agreement
Community-Based Organizations	Local Neighborhood Parks Advocates; Capacity-building Organizations
Private Sector Philanthropy	Community Partners; Resource Legacy Fund; Gilbert Foundation
Strategic Collaboration	Los Angeles County WHAM; Los Angeles County Department of Public Health; First 5 Los Angeles



Grantmaking Information and Resources

➤ Information

- Grants Management System Handbook
- Grants Administration Manual

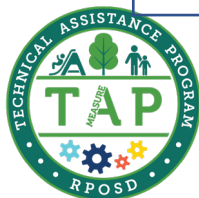
➤ Workshops and Training

- RPOSD TAP Workshop
- Parks Grantmaking Workshops (e.g., Parks 101, 102, & 103)

➤ Toolkits

- Park Planning Handbook
- Measure A Basics Handbook
- Measure A Quick Start Guide
- Grant Writing Handbook

RPOSD.LACounty.gov



¹ LACountyParksNeeds.org

Managing Your Grant

Grants Officer: Roles and Accountabilities

A Grants Officer is the primary contact person a grantee has with RPOSD for assistance with the grant administration process. Each grantee is assigned a Grants Officer to assist them with the grants they receive. The Grants Officer is tasked with reviewing/approving documentation and payments submitted by grantees on their various grants. The Grants Officer informs the grantee of any grant compliance issues that could affect their Good Standing with RPOSD.

Maintain RPOSD Good Standing

Good Standing is required of all grantees to have payment requests processed and to receive any grant funds from RPOSD. Good Standing is achieved and maintained when a grantee is in compliance with all requirements stated in the guidelines, policies, and procedures of RPOSD for both Proposition A and Measure A grant programs.



Grants Administration Manual

The purpose of the Grants Administration Manual is to provide guidance in applying for and administering Measure A funds so that grantees will have successful park projects throughout Los Angeles County.

1. The Grants Administration Manual was developed with input from the Measure A Implementation Steering Committee¹;
2. The Steering Committee process benefitted from the input of dedicated members with expertise in parks, recreation, and open space as well as related local community issues in Los Angeles County;
3. The Grants Administration Manual also benefitted from the outreach and engagement RPOSD conducted to solicit additional feedback from potential grantees and interested members of the public.
4. The GAM has been updated; please refer to the current version on RPOSD.LACounty.gov

¹ RPOSD Measure A Implementation Steering Committee materials are at RPOSD.LACounty.gov



Professional Services and Consulting

1. Exclusive resource for communities with park ‘high-need’ or ‘very-high-need’ study areas;
2. Provides funding for park eligible entities to contract with qualified vendors;
3. Targets needs across the park development continuum;
4. Multiple pathways to obtain assistance over time;
5. One element of Technical Assistance Program;



Needs Assessment for Technical Assistance Services & Consulting *(Draft For External Review)*

Park Needs Assessment Category: Very Low Low Moderate High Very High

RPOSD Measure A Category
(Check All That Apply)

- Maintenance & Servicing
- Planning & Design
- Innovation
- Community Based Investment – Category 1
- Neighborhood Parks Healthy Communities– Category 2
- Natural Lands, Local Beaches – Category 3
- Regional Recreation – Category 4
- Youth & Veterans Jobs – Category 5
- Recreation Access – Categories 3 and 4
- Acquisition Only – Categories 3 and 4

Schedule: Start Date: _____ End Date: _____

Project Description (& Problem Statement)

What Technical Assistance Is Needed For This Phase Of The Project?

- | | | | |
|--|--|--|--|
| <input type="checkbox"/> Community Outreach & Engagement | <input type="checkbox"/> Environmental Studies | <input type="checkbox"/> Project Management | <input type="checkbox"/> Planning, Scoping, & Design |
| <input type="checkbox"/> Acquisition Services | <input type="checkbox"/> Grant Writing & Application | <input type="checkbox"/> Construction Management | <input type="checkbox"/> Engineering & Construction |

Specific Deliverables: 1 _____ 2 _____

3 _____ 4 _____

5 _____ 6 _____





Request for Statement of Qualifications (RFSQ)

Park and Open Space Grants – Measure A

Technical Assistance Program Professional Services

Prepared By
County of Los Angeles, Regional Park and Open Space District

February 16, 2021



RPOSD Request for Statement of Qualifications (RFSQ)

1.0 General Information

1.1 Purpose and Background

The County of Los Angeles, Regional Park and Open Space District (RPOSD) is seeking qualified vendors to enter into Master Agreements with RPOSD to provide Technical Assistance (TA) Professional Services to support Measure A Competitive Grants. These resources are part of the RPOSD Technical Assistance Program (TAP).

1.2 Scope of Work

Some significant features of this RFSQ and resulting Master Agreement are as follows:

1. The terms contained in the Master Agreement are non-negotiable. The Master Agreement will be uniformly executed amongst all Qualified Contractors.
2. The Master Agreement may be amended, from time to time during the term of the Master Agreement.
3. During the term of the Master Agreement, newly Qualified Vendors may be added at any time to the list of Qualified Vendors for each Skill Category, and newly Qualified Contractors in the respective Skill Categories will be included in Work Order Solicitations.
4. During the term of the Master Agreement, Skill Categories may be added or deleted at any time, based on RPOSD's needs and at RPOSD's sole discretion. Qualified Vendors wishing to expand the number of Skill Categories for which they are eligible may also apply at any time to be added to the list of Qualified Vendors for new Skill Categories. Qualified Contractors wishing to expand the number of Skill Categories for which they are eligible may also apply at any time to be considered for Work Order Solicitations in the new Skill Categories.
5. Work Order Solicitations will be sent electronically to Qualified Contractors in the respective Skill Categories and responses to the Work Order Solicitations shall be submitted electronically, unless otherwise stated in the Work Order Solicitation.



Master Agreement and Qualified Vendors

RFSQ Appendix K: Parkland Project Development Scope of Services

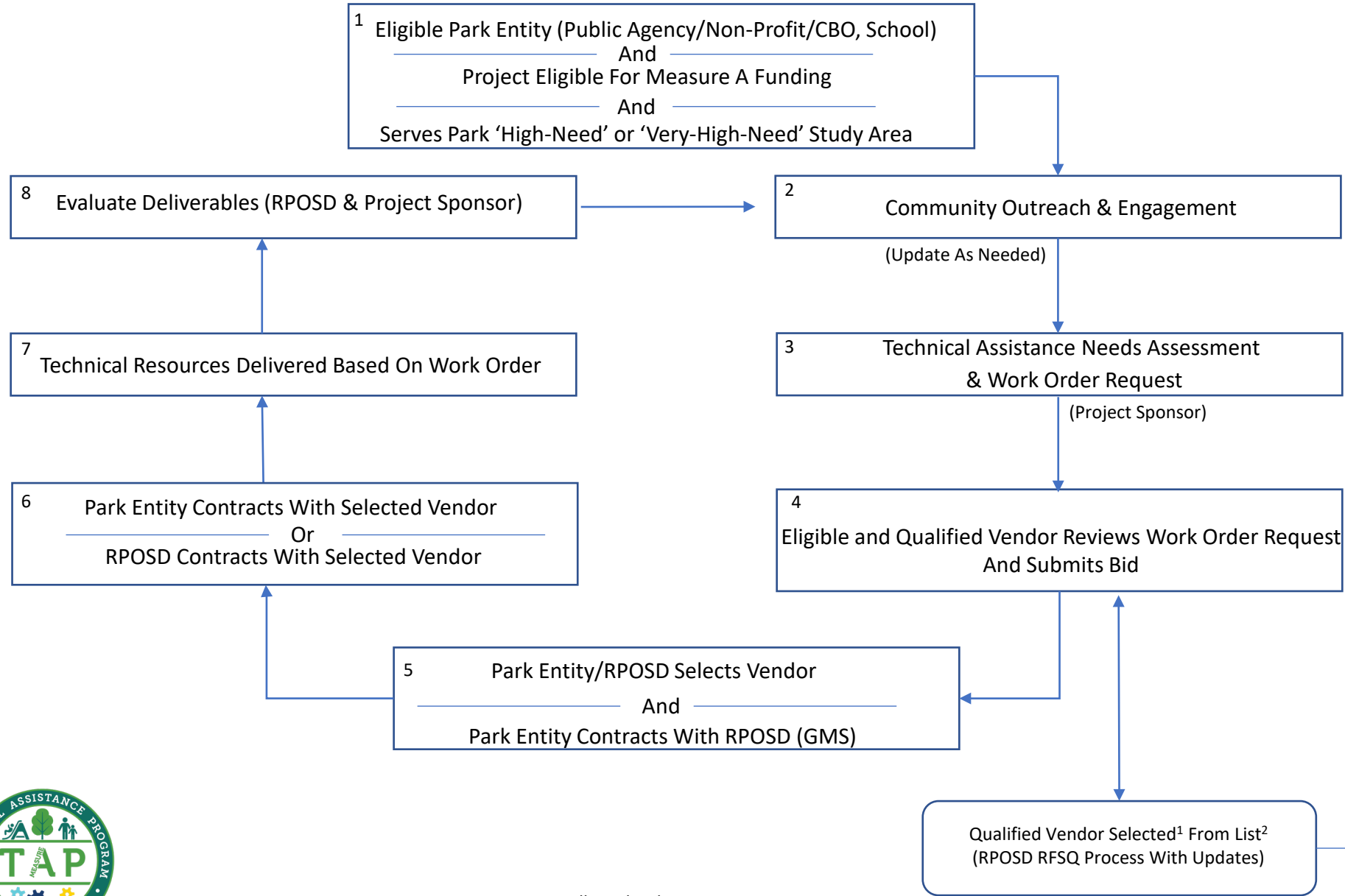
Depending on the type of work described in the Work Order Request, a Consultant may be selected based on expertise in one or more of the following disciplines:

1. Community Outreach and Engagement
2. Environmental Studies;
3. Acquisition Services;
4. Project Feasibility and Cost Estimation;
5. Planning, Scoping, Design, Engineering, and Construction documents;
6. Grant Writing and Application
7. Project and Construction Management
8. TAP Program Development and Implementation

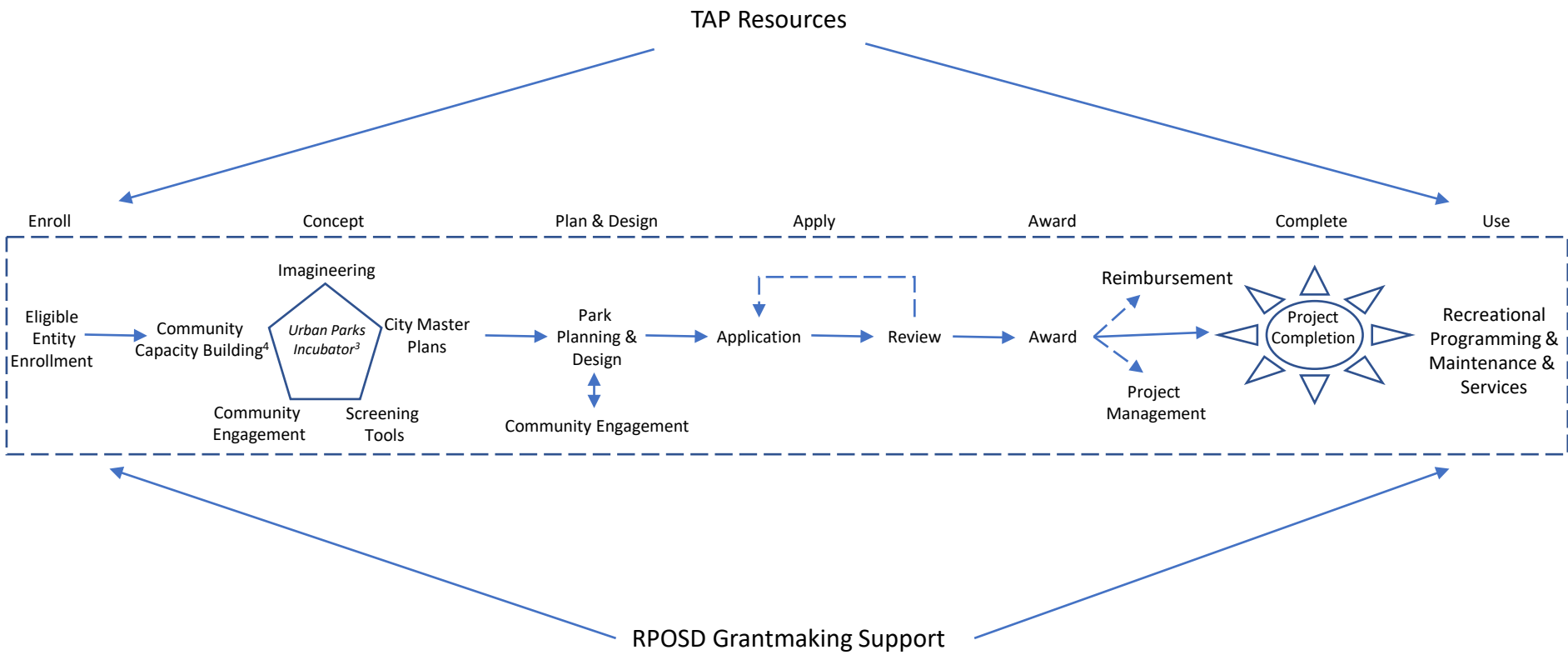
The parkland project technical resource categories each represent a segment of the park project development continuum. The descriptions are representations of the kind of work that would be expected in that category. These do not include all relevant examples. The Qualified Vendors will be asked to bid on a Work Order Request, developed in coordination with eligible park entities. The submitted bids will be evaluated on: a) Approach; b) Deliverables; c) Innovation; d) Schedule; and e) Budget.



Obtaining Technical Assistance Services & Consulting



RPOSD¹ Measure A²: TAP Resources For The Park Development Continuum



¹RPOSD.LACounty.gov;

²Measure A TAP resources are prioritized to LA County PNA 'high-need' and 'very-high-need' study areas (see LACountyParkNeeds.Org);

³ Urban Parks Incubator identifies park/open space opportunities, assess challenges, screens for priorities elements, and engages with the community;

⁴ Community Engagement and Outreach occurs across the park development and implementation spectrum;



Next Steps

1. Support Your Park Project Development
 - a) Complete Your RPOSD GMS Registration
 - b) Update Your Parks Inventory
 - c) Monitor Measure A Funding Cycles
 - d) Perform Community Outreach and Engagement
 - e) Perform Park Project Technical Assistance Needs Assessment

2. Keep Up With Parks Developments
 - a) Newsletter
 - b) News & Announcements
 - c) Our Calendar

3. Contact [RPOSD TAP](mailto:TAP@RPOSD.LACounty.gov)

TAP@RPOSD.LACounty.gov



TAP: RPOSD Parks Incubation & Parks Creation Pipeline



Thank-you!