

County of Los Angeles
Parks and Recreation Commission Meeting

April 2, 2018 at 9:30 a.m.

Parks and Recreation Headquarters Office
Building A-3 East, Ground Fl. Conf. Room (G101)
1000 S. Fremont Avenue
Alhambra, CA 91803

A person with a disability may contact the Commission Secretary's Office at (626) 588-5382 at least by Thursday morning the week before the scheduled meeting to request receipt of an agenda in an alternative format or to request disability-related accommodations, including auxiliary aids or services, in order to participate in the public meeting. Later requests will be accommodated to the extent feasible.

I. CALL TO ORDER

II. FLAG SALUTE

III. ROLL CALL

IV. ELECTION OF COMMISSION OFFICERS

1. Chair
2. Vice Chair
3. Secretary

V. APPROVAL OF MEETING MINUTES (October 3, 2016)

VI. DIRECTOR'S UPDATES

1. Employee Awards Banquet on April 19, 2018
2. 16th Annual Park Summit at the Arboretum and Botanic Garden on April 26, 2018

VII. DEPARTMENT UPDATES

1. Contracts Update – Ruben Lopez
2. Budget Update – Malou Rubio
3. Measure A Update - Jane Beesley
4. Parks After Dark Update –Tina Magakyan

VIII. PUBLIC COMMENT

IX. CALENDAR ITEMS

First District

- The Original Renaissance Pleasure Faire at Santa Fe Dam Recreation Area, starts Saturday, April 7th through Sunday, May 20th from 10 a.m. to 7 p.m.
- Countywide Fitness Challenge – Walk-it-off! at Whittier Narrows Recreation Area on Saturday, April 21, 2018 from 8 a.m. to noon

IX. CALENDAR ITEMS (Continued)

Second District

- Cancer Society "Relay for Life of Baldwin Hills" at Kenneth Hahn Recreation Area on beginning Saturday, June 23 through Sunday, June 24th
- Don Wallace Trail Dedication Event in Calabasas on Friday, April 13, 2018 at 11 a.m.

Third District

- Don Wallace Trail Dedication Event in Calabasas on Friday, April 13, 2018 at 11 a.m.

Fourth District

- Assembly Member Garcia Walk-through of Golf Academy at Don Knabe Golf Center on Friday, May 4, 2018 at 1:30 p.m.
- Countywide Fitness Challenge at Hacienda Heights Community Center on Saturday, May 19, 2108 from 8 a.m. to noon

Fifth District

- Supervisor Barger Hike at Eaton Canyon Nature Center on Friday, April 6, 2018 at 8:30 a.m.
- Dragon Boat Festival at Castaic Lake Lagoon on Sunday, April 8, 2018 from 8 a.m. to 4 p.m.
- 16th Annual Park Summit at the Arboretum and Botanic Garden on Thursday, April 26, 2018 from 8 a.m. to 4 p.m.
- LACO Women's Golf Day at Santa Anita Golf Course on Tuesday, June 5, 2018 from 4 p.m. to 8 p.m.
- Countywide Fitness Challenge at Castaic Lake Recreation Area on Saturday, June 16, 2018 from 8 a.m. to noon

X. NEXT MEETING

The next Parks and Recreation Commission meeting will be held on Monday, July 9, 2018, at a location chosen by the Commission.

XI. ADJOURNMENT

County of Los Angeles
Parks and Recreation Commission Meeting

Minutes of the October 3, 2016

The regular meeting of the Los Angeles County Parks and Recreation Commission was held on October 3, 2016.

PARKS AND RECREATION STAFF PRESENT:

John Wicker, Director
Bob Maycumber, Deputy Director
Norma E. Garcia, Deputy Director
Joe Mendoza, Deputy Director
Kathy King, Regional Operations Manager
Malou Rubio, Regional Operation Manager
Jane Beesley, Regional Parks and Open Space Administrator
Rita Robinson, Project Director
Faith Parducho, Unincorporated Liaison
Kaye Michelson, Special Assistant
Terry Kanakri, Public Information Office
Ed Reyes, First District Commissioner
Mayisha Akbar, Second District Commissioner
John Hsu, Fourth District commissioner
Carmen Garrido, Sr. Management Secretary
Elva Espinoza, Executive Secretary

I. CALL TO ORDER

Commissioner Mayisha Akbar called the meeting to order at 10:28 a.m.

II. FLAG SALUTE

Commissioner Ed Reyes led the Flag Salute.

III. ROLL CALL

Commissioners Ed Reyes, Mayisha Akbar and John Hsu were present.

Commissioner William Korek and Bettina Duval were not present.

IV. APPROVAL OF MEETING MINUTES

Commissioner Mayisha Akbar moves motion to approve the April 11, 2016 Commission Meeting Minutes, seconded by Commissioner John Hsu, and all Commissioners present concurred.

1. Parks Funding Measure – Jane Beesley
2. Needs Assessment Update – Rita Robinson
3. PAD Update – Faith Parducho
4. Budget Update – Malou Rubio

V. DIRECTOR'S UPDATES

Director John Wicker (Wicker) was very pleased to introduce/announced Chief Deputy Director Norma E. Garcia. He stated Norma was the Chief of Planning and has a great amount of experience and was the best candidate for the job. Commissioners applauded and congratulated Chief Deputy Director Norma E. Garcia and look forward in working with her at that level.

Director Wicker announced that the Department of Parks and Recreation Headquarters is looking for a new Building to relocate and we might have found it in Alhambra – across the Department of Public Works and we are currently working on negotiations and will let you know the outcome.

Director Wicker talked about Earthquake Awareness – and how we are on high alert and need to get prepared. Sufficient water and an emergency kit in the car are recommended. He referred to the San Andreas Fault. He stated that we need to make sure staff are all well prepared.

Director Wicker announced that the Board of Supervisors adopted the supplemental budget and it looks good for our Department as we had a roll over Budget.

Also, Director Wicker announced that both Supervisor Don Knabe, Fourth District and Supervisor Michael Antonovich, Fifth District will be leaving office in December 2016. We are losing two great Supervisors and Park Supporters. In the meantime, we are preparing Department packages – structured with the Budget for the incoming Supervisors – possibly Janice Hahn in the Fourth District and Kathryn Barger in the Fifth District. They both seem to be big supporters for Park's, as well.

Director Wicker stated that on the subject of the Hindenburg Sign in La Crescenta Park – the Department held a Public Meeting/Hearing with the collaboration of the Human Relations Commission – where they heard the Community and made recommendations on the matter. The Commission recommended a Task Force Committee and they are working with our curator Ansley Davis. The Task Force has developed a new sign that includes the historic information. This seems to be working out fine.

One more thing, Director Wicker stated that we have been interviewing for the Assistant Director positions – East Agency and Planning and Development Agency. Plus, we will also need to interview for the Assistant Director positions in Regional Facilities Agency and South Agency. This will definitely create a new Team for this Department.

VI. DEPARTMENT UPDATES

Park Funding Measure by Jane Beesley.

Ms. Jane Beesley presented a power point presentation – The 2016 Safe, Clean Neighborhood Parks and Beaches Measure (Measure A). An overview of this included: Framework for Parks Funding: Parcel Tax that is cents per square foot of structural development on a parcel. This excludes parking structures like residential garages and commercial structures.

\$0.015/sq ft on a 1500 sq ft home=\$22.50 annually
Total revenue = \$94.5 million annually

The expenditure plan was written to meet the results of the Countywide Park and Recreation Needs Assessment

VI. DEPARTMENT UPDATES (CONTINUED)

Welfare Exemption – a property tax exemption that non-profits may be eligible to utilize. (Non-profit Hospitals, some Private Schools, and Churches)

Measure A will Fund 47 Study Areas – Refurbishment, Improvements to current Parks, Beaches and Open Space. Funds into each Study Area with additional funds into Study Areas of High and Very High Need.

The Park Funds will be Allocated throughout the County in two Categories:

1. Prop A 1992 and 1996 – a total of 22 years with a One (1) Time Allocation. Most of the Cities have used the funds.
2. 2016 Measure A – Annual Allocations and there is no Sunset date.

The Department of Parks and Recreation will have funds to use – just needs to figure out how they want to use it. In addition, DPR will be eligible for competitive grant programs. Also, Beaches could use fund for Park After Dark or Grants.

Commissioner Ed Reyes asked “Let’s assume that Measure A passes?” Is there a way to show the increased incremental? Jane stated that there will be some increase or overlap – maybe – 7 to 10 years to close out projects as we have close to 10 million.

Commissioner Ed Reyes asked if there is potential to focus on areas of needs. Jane reiterated that – yes – most definitely as that is the purpose of this study. To focus on the most needs areas.

Chief Deputy Director Norma E. Garcia stated that she has seen the Board of Supervisors looking at their most needs areas and focusing in those specific areas with existing Prop A dollars to allocate to those projects.

Jane responded that to be true, we educated to the Needs Areas and agencies decide what projects they will focus on. Commissioner Ed Reyes suggested that Public Works or Sanitation can be include in discussions. Maybe we can leverage needs with these agencies?

Chief Deputy Director Norma E. Garcia, stated that we are currently doing that with Public Works and Library. This funding will allow cross funding for these projects.

Commissioner Mayisha Akbar – asked from the Park Assessment – What about programs for areas that don’t have existing parks and a survey could not be done? Jane Beesley replied that these areas were not addressed. Programs would have to be provided by non-profit organizations. However, we did look at potential parcels that are under use or could be parks in the study area and also in the high needs areas. Therefore, when we do the competitive grant program – the high needs areas will have priority of the grant program.

VI. DEPARTMENT UPDATES (CONTINUED)

Chief Deputy Director Norma E. Garcia stated that our Department is moving forward like if Measure A would be passing. There is already active acquisition where we have no parks for potential future parks to the underserved high needs areas. We are looking for expansion for land acquisition. We are hopeful this passes with all the information and education we have provided to the community. The County cannot advocate or take a stand on Measure A. We can only educate the Community. Our Electronic and Social Media Budget is \$900,000 – covers: Facebook, Twitter, Instagram, Google, and News Venues. Jane provided a handout on Measure A that includes the facts – she said you can talk about it – it is not about yes or no – or whether you want it to pass or not. This is a resource tool with all the facts. In addition, a poll in July by our Consultants put Measure A at 83 percent. Jane – thanked everyone for their time.

Needs Assessment Update

Ms. Rita Robinson provided an update on the Needs Assessment – She said here is a Needs Assessment Base with the Study and Accomplishments. This was very well received. Great grass roots well received. Now the Department of Public Works is being pressured to do a Study like what we did. This was a lot of work by staff and consultants. The framework and foundation in terms of funding. The Community is interested from Health, Jobs, Social Standpoint and brought the County together.

Rita thanked Director John Wicker and Chief Deputy Director Norma E. Garcia and staff for pushing the efforts. Now we are part of the Needs Assessment Study. This data is being used to use their grant money by non-profits organizations and universities. This is a breathing living document that will grow. Everything is online.

Commissioner Ed Reyes stated that he was at a conference and the Needs Assessment was used based on this document (base map) used at national level. He was glad and happy this good information was being used. Everyone was impressed and applauded to have heard that the Needs Assessment was being used at a national level.

Parks After Dark

The Benefits of Parks After Dark (PAD) was presented by Ms. Faith Parducho, Unincorporated Liaison. She presented a power point with the following summary. She stated that PAD provides a community-based framework for prevention and intervention.

- Decrease violence
- Promote physical activity >> chronic disease
- Improve social cohesion >> mental health
- Build community trust
- Provides services in safe & welcoming space
- Strong network of multi-sector collaboration
- Cost savings

The PAD Expansion Timeline

2010: 3 Parks – Prevention strategy of County's Gang Violence Reduction Initiative

2012 – 6 Parks – Department of Public Health - Community Transformation Grant (CTG) funding adds 3 parks.

VI. DEPARTMENT UPDATES (CONTINUED)

2014: Grant ends early plus PAD Strategic Plan and Health Impact Assessment = Chief Executive Office backfills lost money – net county cost.

2015: 9 Parks: Supervisor Solis funds 3 additional parks in SD1 her first year in office.

2016: 21 Parks Countywide
Collaboration with CEO, DPR:

- Department of Public Health Trauma Prevention Initiative
- Probation Title IV-E Waiver funds

2016 PAD Parks was doubled in all districts: The County Park Criteria: Economic hardship, high obesity prevalence, high assault rate, Office of Child Protection priority zip codes, adequate park facilities.

| District | Current PAD Parks | 2016 Additional Parks |
|----------|---|--|
| 1 | City Terrace (East LA) Basset Park (West Puente Valley) Salazar Park (East LA) San Angelo Park (Avocado Heights) | Belvedere Park (East LA) Obregon Park (East LA) Allen Martin Park (La Puente) |
| 2 | Jesse Owens Park (South Vermont) Roosevelt Park (Florence-Graham) Watkins Park (Florence-Graham) | Athens Park (Willowbrook) Helen Keller Park (Westmonth) Bethune Park (Florence-Graham) East Rancho Dominguez Park (Compton) |
| 3 | | El Cariso Park (Sylmar) |
| 4 | | Adventure Park (South Whittier) Mayberry Park (South Whittier) |
| 5 | Loma Alta Park (Altadena) Pamela Park (Duarte) | Steven Sorensen Park (Lake Los Angeles) Val Verde Park (Castaic) |

Ms. Faith Parducho stated that for the PAD Expansion Budget we still need matching funds for 2017-2019 for 21 parks. We have a shortfall of \$1,781,000.

The Funding Shortfall Strategies:

- Proposed Board Motion in November, which will include results of 2016 PAD, to secure funding for the program.
- Weingart Foundation initiated meeting with proposed funders to discuss benefits of PAD.

Ms. Faith Paducho stated that she would like to close her presentation with Participants comments:

For example "one participant, a father, could not afford and provide to his children, During PAD, we were able to provide sports, computer use, movies, entertainment, free hot dogs, resources," (Watkins Park).

VI. DEPARTMENT UPDATES (CONTINUED)

And, another example was a troubled female teen who was gang affiliated volunteer and became a positive role model during the summer. The parents was so happy to have seen her daughter do something positive. (Jesse Owens Park)

PAD has been very positive and very well accepted by the Community. Commissioner Ed P. Reyes stated that those comments are great!

290,000 visits from 2010-2015 (6-9 weeks per year, 3 days per week)

Summer of 2016 PAD is estimated at 130,000 with 12 parks reporting.

Budget Update

Ms. Malou Rubio, Budget Officer stated that the Board approved the 2016-17 Budget on September 27, 2016 and that was the final phase. DPR's Budget is \$186 million with about 1600 positions which represents less than one percent of the County's \$30 billion Budget for 2016-17. She said that last year in September we closed the books and we did not return any money back. We got the benefit of all our money for FY 15/16. Ms. Rubio thanked the Commissioners for sending the Budget Letter of Support to the Board of Supervisors. She suggested that maybe for FY 17/18 Budget – we could have oral testimony from the Commissioners. Now we must prioritize needs for FY 17/18.

VII. PUBLIC COMMENT

None.

VIII. CALENDAR ITEMS

First District

- Candy Giveaway at San Angelo on October 31 from 6:00 p.m. to 8:00 p.m.
- Glow Stick Giveaway at Rimgrove on October 31 from 6:00 p.m. to 8:00 p.m.
- Candy Giveaway at Saybrook on October 31 at 5:00 p.m.
- Trick or Treat at Sunshine on October 31 from 6:30 p.m. to 8:30 p.m.
- Halloween Magic Show & Candy Giveaway at Valleydale on October 31 from 5:30 p.m. to 7:30 p.m.
- USA Boxing Competition on November 1 at Boxing Club from 1:00 p.m. to 5:00 p.m.
- Countywide Fitness Challenge 2016 at Santa Fe Dam on November 5, 2016 from 8:00 a.m. to 3:00 p.m.
- Model Rocket Launch at Santa Fe Dam on November 5, 2016 from 6:30 a.m. to 2:00 p.m.
- Community Meeting at Saybrook on November 7 from 6:00 p.m. to 7:30 p.m.
- Thanksgiving Dinner at City Terrace on November 8 at 6:00 p.m.
- Veteran's Day Memorial at Two Strike on November 11 from 12:00 p.m. to 5:00 p.m.
- USA Boxing Competition on November 11 at Boxing Club from 1:00 p.m. to 5:00 p.m.
- Club Victoria Dance at Salazar on November 12 from 1:00 p.m. to 4:00 p.m.
- Thanksgiving Coloring Contest on November 12 from 11:00 a.m. to 1:00 p.m.
- Thanksgiving Perky Turkey on November 12 at 11:00 a.m.
- Club Victoria Dance at Salazar on November 12 from 1:00 p.m. to 4:00 p.m.
- Model Rocket Launch at Santa Fe Dam for November 13, 2016 from 6:30 a.m. to 2:00 p.m.
- Community Thanksgiving Dinner at Valleydale on November 16 from 6:00 p.m. to 8:00 p.m.
- Cheer Thanksgiving Dinner at Dalton on November 17 from 6:00 p.m. to 8:00 p.m.
- Bowling for Turkeys at San Angelo on November 17 from 4:00 p.m. to 6:00 p.m.

VIII. CALENDAR ITEMS (CONTINUED)

First District – Continued

- Thanksgiving Event at Martin on November 17 at 1:00 p.m.
- Community Thanksgiving Dinner at Crescenta Valley on November 17 from 6:00 p.m. to 8:00 p.m.
- Thanksgiving Dinner at Pamela on November 17 from 7:30 p.m. to 9:00 p.m.
- Turkey shoot at Charles White on November 18 from 5:00 p.m. to 6:00 p.m.
- Turkey shoot at Loma Alta on November 18 from 5:00 p.m. to 6:00 p.m.
- Thanksgiving Turkey Shoot at Sunshine on November 18 from 4:00 p.m. to 6:00 p.m.
- Mutt Strutt at Crescenta Valley on November 19 from 5:00 a.m. to 2:00 p.m.
- Turkey Shoot at Dalton on November 19 at 12:00 p.m.
- Health Fair at ELA Civic Center on November 19 from 11:00 a.m. to 3:00 p.m.
- Thanksgiving Luncheon at Salazar on November 19 from 11:00 a.m. to 2:00 p.m.
- Thanksgiving with Goya at Saybrook on November 19 from 11:00 a.m. to 1:00 p.m.
- Thanksgiving Event at Belvedere on November 21 at 1:00 p.m.
- Model Rocket Launch at Santa Fe Dam for December 3, 2016 from 6:30 a.m. to 2:00 p.m.
- Fishing with Santa at Whittier Narrows Recreation Area on December 3, 2016 from 8:00 a.m. to 1:00 p.m.
- Race for Life for First Responders at Whittier Narrows Recreation Area on December 10, 2016 from 7:00 a.m. to 3:00 p.m.
- Community Meeting at Saybrook on December 5 from 6:00 p.m. to 7:30 p.m.
- Christmas Play at Belvedere on December 9, 10, 11, 16, 17 at 7:00 p.m.
- Fishing Derby at ELA Civic Center on December 10 at 7:00 a.m.
- Club Victoria Dance at Salazar on December 10 from 1:00 p.m. to 4:00 p.m.
- Santa's Toy Giveaway at Charles White on December 10 at 12:00 p.m.
- Visit from Santa at Saybrook on December 15 at 11:00 a.m.
- Christmas Event at Martin on December 15 at 1:00 p.m.
- Visit from Santa at Salazar on December 16 from 6:00 p.m. to 8:00 p.m.
- Visit from Santa at Saybrook on December 16 from 5:00 p.m. to 6:30 p.m.
- Toy Giveaway at Valleydale on December 16 at 6:00 p.m.
- Brunch with Santa at Dalton on December 17 at 12:00 p.m.
- Breakfast with Crescenta Valley on December 17 at 11:00 a.m.
- Santa's Toy Giveaway at Loma Alta on December 17 at 12:00 p.m.
- Christmas Winter Carnival at San Angelo on December 17 from 10:00 a.m. to 1:00 p.m.
- Christmas Event at Sunshine on December 17 from 11:00 a.m. to 2:00 p.m.
- Christmas Event at Rimgrove on December 17 at 1:00 p.m.
- Visit from Santa at Walnut Nature on December 17 from 11:00 a.m. to 1:00 p.m.
- Christmas Luncheon at City Terrace on December 17 from 10:00 a.m. to 5:00 p.m.
- Christmas Play at Belvedere on December 18 at 7:00 p.m.
- Model Rocket Launch at Santa Fe Dam for December 18, 2016 from 6:30 a.m. to 2:00 p.m.

Second District

- Food Bank at Roosevelt Park Senior Center on Wednesday, October 12, 2016 from 9:00 a.m. to 11:00 a.m.
- Senior Halloween Party at Roosevelt Senior Center on Thursday, October 27, 2016 from 10:00 a.m. to 12:00 p.m.
- Halloween Event at Ladera Park on Saturday, October 29, 2016 from 12:00 p.m. to 3:00 p.m.
- Halloween Extravaganza at Roosevelt Park on Monday, October 31, 2016 from 5:00 p.m. to 7:00 p.m.
- Halloween Event at Alondra Park on Monday, October 31, 2016 from 6:00 p.m. to 8:00 p.m.
- Halloween Event at Bodger Park on Monday, October 31, 2016 from 5:00 p.m. to 7:00 p.m.
- Halloween Event at Carver Park on Monday, October 31, 2016 from 5:00 p.m. to 7:00 p.m.
- Halloween Event at Del Aire Park on Monday, October 31, 2016 from 6:00 p.m. to 8:00 p.m.

VIII. CALENDAR ITEMS (CONTINUED)

Second District

- Halloween Event at Jesse Owens Park on Monday, October 31, 2016 from 6:00 p.m. to 8:00 p.m.
- Halloween Event at Helen Keller Park on Monday, October 31, 2016 from 5:00 p.m. to 7:00 p.m.
- Halloween Event at Mona Park on Monday, October 31, 2016 from 5:00 p.m. to 7:00 p.m.
- Halloween Event at Victoria Park on Monday, October 31, 2016 from 4:00 p.m. to 6:00 p.m.
- Thanksgiving Luncheon at Victoria Park on Thursday, November 17, 2016 from 4:00 p.m. to 6:00 p.m.
- Thanksgiving Luncheon at Alondra Park on Friday, November 18, 2016 from 12:00 p.m. to 2:00 p.m.
- Community Dinner at Del Aire Park on Friday, November 18, 2016 from 6:00 p.m. to 8:00 p.m.
- Thanksgiving Luncheon at Helen Keller Park on Saturday, November 19, 2016 from 12:00 p.m. to 3:00 p.m.
- Thanksgiving Celebration at Roy Campanella Park on Saturday, November 19, 2016 from 11:00 a.m. to 1:00 p.m.
- Turkey Shoot at Carver Park on Saturday, November 19, 2016 from 2:00 p.m. to 5:00 p.m.
- Thanksgiving Event at Bodger Park on Tuesday, November 22, 2016 from 12:00 p.m. to 2:00 p.m.
- Thanksgiving Brunch at East Rancho Dominguez Park on Tuesday, November 22, 2016 from 10:00 a.m. to 12:00 p.m.
- Tree Lighting Program at East Rancho Dominguez Park on Thursday, December 8, 2016 from 5:00 p.m. to 6:30 p.m.
- Angel City Toy Giveaway at Ted Watkins Park on Saturday, December 10, 2016 from 8:00 a.m. to 3:00 p.m.
- Tree Lighting and Toy Giveaway at Mona Park on Friday, December 16, 2016 from 6:00 p.m. to 8:00 p.m.
- Christmas Toy Giveaway at Alondra Park on Saturday, December 17, 2016 from 12:00 p.m. to 2:00 p.m.
- Community Holiday Celebration at Helen Keller Park on Saturday, December 17, 2016 from 11:00 a.m. to 3:00 p.m.
- Community Christmas Celebration at Carver Park on Saturday, December 17, 2016 from 11:00 a.m. to 4:00 p.m.
- Christmas Toy Giveaway at East Rancho Dominguez Park on Sunday, December 18, 2016 from 11:00 a.m. to 2:00 p.m.
- Halloween Event at East Rancho Dominguez Park on Monday, October 31, 2016 from 4:30 p.m. to 6:30 p.m.
- Christmas Toy Giveaway at Bodger Park on Friday, December 23, 2016 from 12:00 p.m. to 2:00 p.m.
- Christmas Toy Giveaway at Roy Campanella Park on Friday, December 23, 2016 from 6:00 p.m. to 8:00 p.m.
- Christmas Toy Giveaway at Victoria Park on Friday, December 23, 2016 starting at 5:00 p.m.

Third District

- Congressman Tony Cardenas Community Job Fair at El Cariso on October 6, 2016 from 10:00 a.m. to 2:00 p.m.
- Jump/Walk 4 the Cure at El Cariso on October 8, 2016 from 9:00 a.m. to 12:00 p.m.
- Halloween Carnival at El Cariso on October 28, 2016 from 3:30 p.m. to 5:30 p.m.
- Halloween Festival at San Fernando Pool on Saturday October 29, 2016 from 5:00 p.m. to 8:00 p.m.

Fourth District

- Walker & Bowes Glass Pumpkin Patch at South Coast Botanic Garden on October 8 & 9, 2016 from 10:00 a.m. to 4:00 p.m.
- Teacher Appreciation Day at South Coast Botanic Garden on October 8, 2016 from 11:00 a.m. to 2:00 p.m.
- #Shoplocal with the Experts Plan Sale at South Coast Botanic Garden on October 8 & 9, 2016 from 9:00 a.m. to 2:00 p.m.
- Moon Festival at South Coast Botanic Garden on October 14, 2016 from 6:00 p.m. to 10:00 p.m.

VIII. CALENDAR ITEMS (CONTINUED)

Fourth Distri

- Buckboard Days Parade and Festival at Rowland Heights Park on Saturday, October 15, 2017 from 7:00 a.m. to 2:00 p.m.
- Halloween Celebration at Steinmetz Senior Center on Tuesday, October 25, 2016 from 2:00 p.m. to 4:00 p.m.
- Halloween Event at Carolyn Rosas Park on Thursday, October 27, 2016 from 5:00 p.m. to 7:00 p.m.
- The Haunting in Rowland Heights Event at Rowland Heights Community Center on Saturday, October 29, 2016 from 5:30 p.m. to 7:30 p.m.
- 24th Annual Model Train Show at South Coast Botanic Garden on October 29 & 30, 2016 from 10:00 a.m. to 4:00 p.m.
- Family Fun Halloween Event at Adventure Park on Monday, October 31, 2016 from 6:00 p.m. to 8:00 p.m.
- Halloween Program at Sorensen Park on Monday, October 31, 2016 from 6:00 p.m. to 8:00 p.m.
- Halloween Program at Steinmetz Park on Mod, October 31, 2016 from 5:00 p.m. to 6:00 p.m.
- Veterans Day Dinner at Steinmetz Senior Center on Friday, November 4, 2016 from 4:00 p.m. to 7:00 p.m.
- Rowland Heights Turkey Event at Rowland Heights Community Center on Tuesday, November 8, 2016 time TBD.
- Club Momme Stroll 'N' Run 5k + Family Fitness Fair at South Coast Botanic Garden on November 13, 2016 from 8:00 a.m. to 12:00 p.m.
- Thanksgiving Celebration at Steinmetz Senior Center on Tuesday, November 15, 2016 from 4:00 p.m. to 7:00 p.m.
- Thanksgiving Luncheon at Amigo Park on Saturday, November 19, 2016 from 1:00 p.m. to 3:00 p.m.
- Thanksgiving Dinner at Sorensen Park on Tuesday, November 22, 2016 from 5:00 p.m. to 8:00 p.m.
- Thanksgiving Floral Centerpiece Design at South Coast Botanic Garden on November 22, 2016 from 6:30 p.m. to 8:30 p.m. Thanksgiving Celebration at Steinmetz Park on Wednesday, November 23, 2016 from 4:00 p.m. to 7:00 p.m.
- Palos Verdes Symphonic Band Holiday Concert at South Coast Botanic Garden on December 4, 2016 from 5:00 p.m. to 7:00 p.m.
- Annual Decorate a Wreath event at Deane Dana Friendship Community Regional Park on December 10 & 11, 2016 from 10:00 a.m. to 2:00 p.m.
- Christmas Open House at Steinmetz Senior Center on Tuesday, December 13, 2016 from 2:00 p.m. to 5:00 p.m.
- Here Comes Santa at Mayberry Park on Tuesday, December 13, 2016 from 6:00 p.m. to 8:00 p.m.
- Tiny Tots and Afterschool Program Christmas Performance on Wednesday, December 14, 2016 from 6:00 p.m. to 8:00 p.m.
- Here Comes Santa at Amigo Park on Wednesday, December 14, 2016 from 3:00 p.m. to 5:00 p.m.
- Here Comes Santa at Adventure Park on Wednesday, December 14, 2016 from 6:00 p.m. to 8:00 p.m.

Fifth District

- Family Night Out/Craft Sales at Stephen Sorensen on October 1, 2016 from 4:00 p.m. to 9:00 p.m.
- Native American POW WOW & Craft Fair at William S. Hart Park on October 1, 2016 from 10:00 a.m. to 7:00 p.m. and October 2, 2016 from 10:00 a.m. to 6:00 p.m.
- Day Camp at Tesoro Adobe on October 3, 4, 5, 6, 7, 2016 from 10:00 a.m. to 3:00 p.m.
- Tri Events Steam Boat Express at Frank G. Bonelli Park on October 9, 2016 from 7:00 a.m. to 3:00 p.m.
- Bow Wows & Meows Pet Fair at William S. Hart Park on October 9, 2016 from 11:00 a.m. to 4:00 p.m.
- Santa Clarita Artists Association Arts Classic Public "Sneak Peek" at William S. Hart on October 15, 2016 from 10:00 a.m. to 1:00 p.m.
- Concert in the Park at Richard Rioux on October 15, 2016, from 6:00 p.m. to 8:00 p.m.
- Santa Clarita Artists Association Arts Classic "Gala Event" (tickets required) at William S. Hart Park on October 15, 2016 from 1:30 p.m. to 5:00 p.m.

VIII. CALENDAR ITEMS (CONTINUED)

Fifth District

- Spooktacular 5k/10k at Frank G. Bonelli Park on October 16, 2016 from 7:00 a.m. to 3:00 p.m.
- Space Rock Marathon at Vasquez Rocks Natural Area on October 16, 2016 from 7:00 a.m. to 2:00 p.m.
- Santa Clarita Artists Association Arts Classic "Free Public Viewing" at William S. Hart Park on October 16, 2016 from 10:00 a.m. to 4:00 p.m.
- Flu Shot Clinic at Val Verde on October 18, 2016, from 4:30 p.m. to 7:00 p.m.
- Halloween Haunted Tours at Tesoro Adobe on October 21, 22, 28, 29, 2016 from 7:30 p.m. to 9:30 p.m.
- Halloween Fall Festival at George Lane on October 21, 2016, from 4:00 p.m. to 8:00 p.m.
- Carnival Games and Dive in Movie at Castaic Aquatics on October 22, 2016, from 5:00 p.m. to 9:00 p.m.
- Countywide Fitness Challenge -Take A Hike at Placerita Canyon Natural Area on October 22, 2016 from 7:30 a.m. to 12:00 p.m.
- Southern California Sidecar Club Show at William S. Hart Park on October 22, 2016 from 9:00 a.m. to 1:00 p.m.
- Halloween Trunk or Treat at Jackie Robinson on October 28, 2016, from 6:00 p.m. to 8:00 p.m.
- Halloween Haunt/Trunk or Treat at Pearblossom on October 28, 2016, from 6:00 p.m. to 8:00 p.m.
- Halloween Festival with Costume Contest at Richard Rioux on October 29, 2016, from 3:00 p.m. to 5:30 p.m.
- Halloween Fall Festival & Trunk or Treat at Stephen Sorensen on October 29, 2016, from 6:00 p.m. to 9:00 p.m.
- Spooky Creatures in the Garden at Los Angeles Arboretum, Ayres Hall on October 29, 2016 from 8:00 a.m. to 12:00 p.m.
- Celebration of Oaks Community Event at Eaton Canyon Natural Area on October 29, 2016 from 10:00 a.m. to 3:00 p.m.
- Halloween Fest at Val Verde on October 31, 2016, from 4:30 p.m. to 6:00 p.m.
- Trunk or Treat at Acton on October 31, 2016, from 5:00 p.m. to 7:00 p.m.
- CNPS Plant Sale at Eaton Canyon Natural Area on November 5, 2016 from 9:00 a.m. to 2:00 p.m.
- Santa Clarita Rose Society Annual Wild West Rose Show at William S. Hart Park on November 5, 2016 from 12:30 p.m. to 4:00 p.m.
- Winter Cactus Show and Sale at Los Angeles Arboretum, Ayres Hall on November 5 & 6, 2016 from 9:00 a.m. to 5:00 p.m.
- Las Artistas de Flores Flower design show at Los Angeles Arboretum, Oak Room on November 5 & 6, 2016 from 9:00 a.m. to 5:00 p.m.
- Veterans Day Celebration and Pancake Breakfast at Stephen Sorensen on November 5, 2016 from 10:00 a.m. to 12:00 p.m.
- Family Night Out and Craft Sales on November 5, 2016, from 4:00 p.m. to 9:00 p.m.
- Farewell to West Creek Park Festival on November 5, 2016, from 10:00 a.m. to 2:00 p.m.
- Girls' On-the-Go 5k/10k at Frank G. Bonelli Park on November 6, 2016 from 7:00 a.m. to 12:00 p.m.
- Adult Fishing Derby at Apollo on November 7, 2016, from 4:30 a.m. to 11:00 a.m.
- American Canary Fanciers Association Annual Canary Show at Los Angeles Arboretum, Ayres Hall on November 12, 2016 from 9:00 a.m. to 5:00 p.m.
- Homeless Connect Day at El Cariso on November 17, 2016, from 10:00 a.m. to 1:00 p.m.
- 100 year Celebration at Tesoro Adobe on November 19, 2016 from 2:00 p.m. to 5:00 p.m.
- Renegade Racing Turkey Trot at Frank G. Bonelli Park on November 19 & 20, 2016 from 7:00 a.m. to 3:00 p.m.
- Thanksgiving Basket Giveaway at Pearblossom on November 19, 2016, from 8:00 a.m. to 12:00 p.m.
- One Pitch Softball Tournament at Stephen Sorensen on November 19, 2016, from 10:00 a.m. to 2:00 p.m.
- Thanksgiving Basket Giveaway at Stephen Sorensen on November 19, 2016, from 2:00 p.m. to 4:00 p.m.
- Holiday Food Assistance at Jackie Robinson on November 19, 2016, from 11:00 a.m. to 1:00 p.m.
- Community Thanksgiving Dinner at Val Verde on November 22, 2016, from 6:00 p.m. to 8:00 p.m.
- Thanksgiving Event at Richard Rioux on November 23, 2016, from 3:30 p.m. to 5:30 p.m.

VIII. CALENDAR ITEMS (CONTINUED)

Fifth District

- 5th Annual Holiday Boutique at William S. Hart Park on November 26 & 27, 2016 from 10:00 a.m. to 4:00 p.m.
- Holiday Craft Fair at Placerita Canyon Natural Area on December 3 & 4, 2016 from 10:00 a.m. to 3:00 p.m.
- Family Night Out and Craft Sales at Stephen Sorensen on December 3, 2016, from 4:00 p.m. to 9:00 p.m.
- Winter Wonderland Festival and Tree Lighting at Stephen Sorensen on December 3, 2016, from 5:00 p.m. to 10:00 p.m.
- Community Holiday Celebration at Richard Rioux on December 3, 2016, from 10:00 a.m. to 12:00 p.m.
- Breakfast with Santa/Toy Giveaway at Pearblossom on December 17, 2016, from 8:00 a.m. to 12:00 p.m.
- Winter Wonderland at George Lane on December 17, 2016, from 10:00 a.m. to 3:00 p.m.
- Breakfast with Santa/Toy Giveaway at Jackie Robinson on December 17, 2016, from 8:00 a.m. to 11:00 a.m.
- Youth Soccer 2016 All Star Game at Richard Rioux on December 10, 2016, from 8:00 a.m. to 5:00 p.m.
- Queen Ann Cottage Open House at Los Angeles Arboretum, Historic Section on December 11, 2016 from 10:00 a.m. to 3:00 p.m.
- Holidays in the Park at El Cariso on December 19, 2016 from 11:00 a.m. to 2:00 p.m.
- Community Christmas Celebration at Val Verde on December 22, 2016, from 4:00 p.m. to 8:00 p.m.
- Winter Camp at El Cariso, December 19 to January 6, 2016 from 7:30 a.m. to 6:00 p.m.

IX. NEXT MEETING

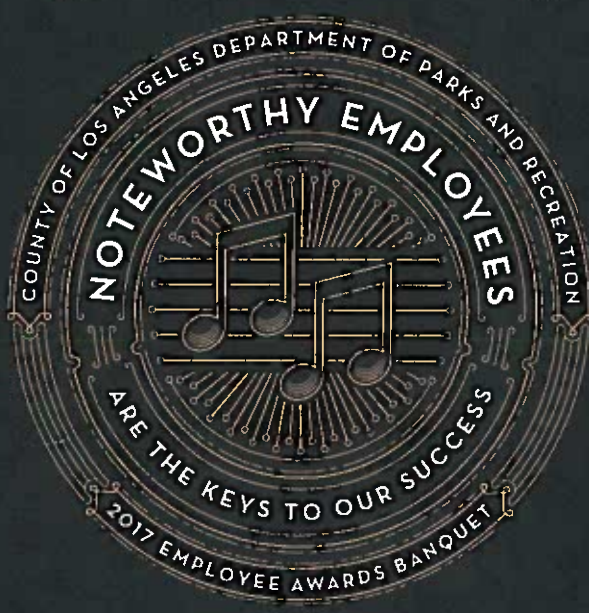
The next Parks and Recreation Commission meeting will be held on Monday, January 9, 2017, at East Rancho Dominguez Sr. Center. A Thomas Guide map of the meeting site will be sent to all Commissioners, in addition to Yahoo driving directions.

X. ADJOURNMENT

Meeting adjourned at 11:45 a.m.

— STRIVE NOT TO —

— BE A SUCCESS —



THURSDAY

APRIL 19, 2018

2017 NOMINEES

Director's Award
Regina Bradley
Henry Ling

Commissioner's Award
eBredhute Team
Landscape Architecture and Design Section
Information Technology Division
Alhambra Headquarters Mose Front Fest
WHD Emergency Response Team
Stonewall Nature Center

Best New Program Award
Malvin Pinkney
El Cerrito Park's Winter Wonderland
Winter Wonderland Tree Lighting
National Owl Day
Life Jacket Leash Program
STEAM Team

Efficiency Award
Land Management and Compliance Section
Planning & CEQA Section
Hacienda Heights
Community Center Tack Crew
Electrical Shop
Plumbing Shop

Genesis Award
Rowland Heights Spectacular Theater
Miguel Felix
Stephen Sorenson Park's Glow Run
WOW! Walk on the Wild Side
Wildflower & Wildlife Sanctuaries
Water Watcher Program

Image Award
Fred Martinez
Daniel Lera
Chris Sapozhuk
Sydney Hild
Alexa Silvestre
Ricky Ortega
Girl's Empowerment Conference
Mahnstedt Carnival
Myisha Perkins
Lyle Goldstein
Mark Tamang
El Cerrito STEAM Summer Day Camp
Brianna Dawson
Kelly Court

Individual Contribution Award
Philip Zylak
Barwayne Tullman
Raul De La Rosa
Tim Ly
Dina Juvap

Safety Awards:
Angel Eye Team
Fernanda Valencia
Kimberly Alvarez

Parks Make Life Better Award
Children's Tours
Adventure Park Community Thanksgiving Event
LAPD Swing @ them/With Agency
Summer Explosion
San Fernando Pool Synchronized Swimming
EMD Construction Division
William S. Hart Park

STEAM Team
Adaptive Aquatics
Senior Lory Eait Ransha Dominguez

Kolar Award
Carol Hellerish and Leonardo Garcia
Anthony Brand
Gerty Gonzalez and Martin Sanchez
Erik Harper
Jaiper Kim
Cedrick Buckner

Volunteer Involvement Award
Potholder Park
Helen Keller Park Volunteers
3 Wise Fitness Program/CSUN Volunteers
East Los Angeles/La Puente District Sports Program
Salazar Teen Program
Placerita Canyon Nature Center

Permanent Employee of the Year:
Odell Mayweather
Frank Kim
Joyce Bozuta
Maria Ortiz
Christopher Sprink
Dan Garcia
Donald Harper
Dina Juvap
Parks Area etia
Matthew Galbraith and John Diaz
Norma Mosseburg
Traci Anthony

Recurrent Employee of the Year:
Alberto Gonzalez
Jacqueline Garcia
Estella Rio
Jacqueline Maras
Johny To
Max Medina
Miriam Kirby
Veronica Zamora
Justin Polletter
Joseph Cienli
Marshall Violez
Iris Esteses

Facility Programs of the Year:
Underwater Unit
Pamela Park Youth Basketball Program
Special Operations
Cesar Chavez Volunteer Awards Banquet
Stonewall Nature Center
Grand Opening
Wetland Project
Stemmed Park/Foothill at July Event
Asian Summer Camp
Arroyo Park Flash Flood Response Team
City Terrace Park
Tree Fosters Crews
Belvedere Park HEAT Program and Apollo Park Fishing Derby

SOCIAL HOUR AT 5 P.M.
DINNER AND PROGRAM
BEGINS AT 6 P.M.

ALMANSOR COURT
700 S ALMANSOR ST.
ALHAMBRA, CA 91801

\$23 PRE-SALE DEADLINE
WEDNESDAY, APRIL 9TH.
\$27 AT THE DOOR

AWARDS COMMITTEE MEMBERS

North Agency: Alicia Garcia, Trevor Zemp, Steve Aulis; East Agency: Karl Mercado, Anthony Derby; Mark Reed; South Agency: Jerome Johnson, Lorraine Martinez, Yvette Morales, Olivia Perez, Jeff Oasi; Regional Facilities Agency: Derek Ehlers, Hector Inzunza, Vicky Huynh, Carlos E. Perez; Administration, Planning and Development: Elizabeth Mendes, Ariana Pajonian, Leo Buroras; Executive Staff: Joyce Gibson

— BUT RATHER TO —

— BE OF VALUE —

KEYNOTE SPEAKER: Anastasia Loukaitou-Sideris
Professor of Urban Planning
Associate Provost for Academic Planning, UCLA

Professor Loukaitou-Sideris' research focuses on the public environment of the city, its physical representation, aesthetics, social meaning and impact on the urban resident. Her work seeks to integrate social and physical issues in urban planning and architecture. An underlying theme of her work is its "user focus"; that is, she seeks to analyze and understand the built environment from the perspective of those who live and work there. Dr. Loukaitou-Sideris' research includes documentation and analysis of the social and physical changes that have occurred in the public realm; cultural determinants of design and planning and their implications for public policy; quality-of-life issues for inner city residents; transit security, urban design, land use, and transportation issues.

Recent and ongoing projects, funded in part by the U.S. and California Departments of Transportation, the Haynes Foundation, the Gilbert Foundation, and the Mineta Transportation Institute, include: an examination of the privatization of public open space in major American downtown areas to document the effects of redevelopment on their built form and social context; documentation of varying patterns of use of neighborhood parks among different ethnic groups; proposals for the physical and economic retrofit of blighted inner city commercial corridors; examination of the impacts of new rail transit lines, creation of guidelines for the development of transit station neighborhoods; studies of transit security, and planning for parklets.

Dr. Loukaitou-Sideris has served as a consultant to the Transportation Research Board, Federal Highway Administration, Southern California Association of Governments, South Bay Cities Council of Government, Los Angeles Neighborhood Initiative, Project for Public Spaces, the Greek Government, and many municipal governments on issues of urban design, open space development, land use and transportation, and she has been commissioned to author research papers by the National Academies and the Robert Wood Johnson Foundation.

LOS ANGELES COUNTY
BOARD OF SUPERVISORS



Hilda L. Solis
First District

Mark Ridley-Thomas
Second District

Sheila Kuehl
Third District

Janice Hahn
Fourth District

Kathryn Barger
Fifth District

**Parks
Make
Life
Better!**

@LACountyparks



#ParkSummit2018



16th ANNUAL PARK SUMMIT



CONNECTING possibilities
 creativity strategy development objectives
 engagement invention mission method **inspiration**
COMMUNITIES
 ideas vision goals
 communication world-class recreation
THROUGH teamwork resources
 progress achievement success positivity
 planning vision motivation values parks
INNOVATION drive aim mind
 focus best fun

THURSDAY, APRIL 26, 2018

16th ANNUAL PARK SUMMIT

THURSDAY, APRIL 26, 2018

8:00 - 9:00 a.m.

Registration and Continental Breakfast

9:00 - 9:30 a.m.

John Wicker, Director, County of Los Angeles,
Department of Parks and Recreation

Legislative Update

Doug Houston, Legislative Consultant,
Houston Magnani and Associates

Measure A Update

Jane Beesley, Administrator,
Los Angeles County
Regional Park and Open Space District

9:30 - 10:30 a.m.

Keynote Speaker:

Dr. Anastasia Loukaitou-Sideris
Professor of Urban Planning,
Associate Provost for Academic Planning, UCLA

10:30 - 10:45 a.m.

Break and Vendor Opportunity

10:50 - 11:50 a.m.

Session I (Concurrent Sessions)

12:00 - 12:50 p.m.

Lunch

1:00 - 2:00 p.m.

Session II (Concurrent Sessions)

2:10 - 3:10 p.m.

Session III (Concurrent Sessions)

3:20 - 4:00 p.m.

Mindfulness Exercise and Walking Tour

Sessions

- Friends Across the Map: Extending County Park Resources to our City Neighbors.
- IT Innovations: Moving Parks into the Technology Era.
- Homelessness: Identifying Resources and Solutions.
- Transforming Communities Through Prevention and Intervention.
- Activating Recreation with Urban Walking Paths.
- The Flow of Parks: Let's Talk Water and Park Funding Initiatives.
- Purposeful Aging Initiative: Importance of Engaging Older Adults.
- Girls in Sports Initiative: Empowering Young Women Through Sports.
- Successful Summer Camp: Extending Dynamic Programming Year-Round.
- GIS Tools and Park Viewers: The Big Picture of Serving Communities.
- Parks Rx: Prescribing Wellness Through Recreation.

Location:

Los Angeles County Arboretum and Botanic Garden
301 N. Baldwin Avenue
Arcadia, CA 91007

Ayres Hall

Parking:

Park in the lot adjacent to Ayres Hall and enter through double gates to gain access to Hall. Carpooling is encouraged.

ADA:

Persons with disabilities needing auxiliary aids or services in order to participate may call Elva Espinoza at (626) 588-5382.

Registration Information

- Registration fee is \$25 per person.
- Includes Continental Breakfast and Lunch.
- Registration fees are due by April 19, 2018.

Please make checks payable to:

Los Angeles County Department of Parks and Recreation, and mail to:

Elva Espinoza or Carmen Garido

Los Angeles County

Department of Parks and Recreation

1000 S. Fremont Ave., Suite #40

Alhambra, CA 91803

You can also pay online at:

<http://reservations.lacounty.gov/reservations/product.asp>

Email: AnnualParkSummit@parks.lacounty.gov

Information: (626) 588-5382 and (626) 588-5366

Fax Number: (626) 570-9301

Select one: ☐ Non-Vegetarian Meal

☐ Vegetarian Meal

Name _____

City/Agency _____

Title _____

Department _____

Address _____

Email Address _____

Telephone No. _____

Fax No. _____

COUNTY OF LOS ANGELES DEPARTMENT OF PARKS AND RECREATION
2018 PARKS AFTER DARK
RESOURCES FAIRS 6:00-8:00 PM AT ALL 33 SITES

| SD | Park | SPA | AGENCY | RESOURCE FAIR DATE |
|----------|--|-----|--------|--------------------|
| SD1 (10) | BASSETT 510 N. Vineland Ave, La Puente, CA 91746 | 3 | EAST | 7/27/18 |
| | BELVEDERE 4914 E. Cesar Chavez Ave, Los Angeles, CA 90022 | 7 | EAST | 8/2/18 |
| | CITY TERRACE 1126 N. Hazard Ave, E. Los Angeles, CA 90063 | 7 | EAST | 7/5/18 |
| | ALLEN J. MARTIN 14830 S. Giordano St, La Puente, CA 91746 | 3 | EAST | 7/19/18 |
| | OBREGON 4021 E. First St, Los Angeles, CA 90063 | 7 | EAST | 7/20/18 |
| | RIMGROVE 747 Rimgrove Dr., La Puente, CA 91744 | 3 | EAST | 6/21/18 |
| | SALAZAR 3864 Whittier Blvd, Los Angeles, CA 90023 | 7 | EAST | 8/28/18 |
| | SAN ANGELO 245 S. San Angelo Ave, La Puente, CA 91746 | 3 | EAST | 7/13/18 |
| | SAYBROOK 6250 East Northside Dr., East LA, CA 90022 | 7 | EAST | 8/3/18 |
| | VALLEYDALE 5525 N Lark Ellen Ave., Azusa, CA 91702 | 3 | EAST | 7/6/18 |
| SD2 (10) | ATHENS 12603 S. Broadway, Los Angeles, CA 90061 | 6 | SOUTH | 6/28/18 |
| | BETHUNE 1244 E. 61st St, Los Angeles, CA 90001 | 6 | SOUTH | 7/12/18 |
| | GEORGE WASHINGTON CARVER 1400 E 116th St, Los Angeles, CA 90059 | 6 | SOUTH | 6/15/18 |
| | EAST RANCHO DOMINGUEZ 15116 S. Atlantic Ave, Compton, CA 90221 | 6 | SOUTH | 7/6/18 |
| | HELEN KELLER 1045 W. 126th St, Los Angeles, CA 90044 | 6 | SOUTH | 7/27/18 |
| | JESSE OWENS 9651 S. Western Ave, Los Angeles, CA 90047 | 6 | SOUTH | 6/21/18 |
| | MONA 2291 E 121st St, Compton, CA 90222 | 6 | SOUTH | 7/20/18 |
| | ROOSEVELT 7600 Graham Ave, Los Angeles CA 90001 | 6 | SOUTH | 8/2/18 |
| | TED WATKINS 1335 E. 103rd St, Los Angeles, CA 90002 | 6 | SOUTH | 7/19/18 |
| | COLONEL LEON WASHINGTON 8908 S. Maie Ave., Los Angeles, CA 90002 | 6 | SOUTH | 8/3/18 |
| SD3 (1) | EL CARISO 13100 Hubbard St, Sylmar, CA 91342 | 2 | NORTH | 7/20/18 |
| SD4 (5) | ADVENTURE 10130 S. Gunn Ave, Whittier, CA 90605 | 7 | SOUTH | 7/13/18 |
| | AMIGO PARK 5700 Juarez Ave, Whittier, CA 90606 | 7 | SOUTH | 7/26/18 |
| | MAYBERRY 13201 E. Meyer Rd, Whittier, CA 90605 | 7 | SOUTH | 6/22/18 |
| | WILLIAM STEINMETZ PARK 1545 S. Stimson Ave, Hacienda Heights, CA 91745 | 3 | SOUTH | 6/29/18 |
| | SORENSEN PARK 11419 Rose Hedge Dr, Whittier, CA 90606 | 7 | SOUTH | 7/5/18 |
| SD5 (7) | CHARTER OAK 20261 East Covina, Covina, CA 91723 | 3 | EAST | 6/29/18 |
| | GEORGE LANE 5520 W Ave L-8, Quartz Hill, CA 93534 | 1 | NORTH | 7/27/18 |
| | LOMA ALTA 3330 N. Lincoln Ave, Altadena, CA 91001 | 3 | EAST | 7/26/18 |
| | PAMELA 2236 Goodall Ave, Duarte, CA 91010 | 3 | EAST | 7/12/18 |
| | JACKIE ROBINSON 8773 East Avenue R, Littlerock, CA 93543 | 1 | NORTH | 7/28/18 |
| | STEPHEN SORENSEN 16801 E. Avenue P, Lake Los Angeles, CA 93591 | 1 | NORTH | 8/3/18 |
| | VAL VERDE 30300 W. Arlington Rd, Val Verde, CA 91384 | 2 | NORTH | 8/4/18 |


Park added in 2018

8105154

Public Health

Parks After Dark (PAD)

Lighting the Way for Prevention and Intervention



Parks and Recreation Commission Meeting
April 2, 2018

Public Health

PAD Parks

PAD was launched at 3 parks in 2010 as a the prevention component of the County's Gang Violence Reduction Initiative and has since successfully expanded to 33 parks, with locations in each of the 5 Supervisorial Districts.

| Supervisorial District | PAD Parks |
|------------------------|--|
| 1 | Allen Martin (La Puente) Bassett (West Puente Valley) Belvedere (East LA) City Terrace (East LA) O'Brien (East LA) |
| 2 | Athens (Willowbrook) Bethune (Florence-Graham) East Rancho Dominguez (Compton) Helen Keller (Westmont) Jesse Owens (South LA) |
| 3 | El Cerrito Park (Brynar) Adventure Park (South Whittier) Amigo Park (Whittier) Carolyn Robins (Rowland Heights) Chatter Oak (Covina) George Lemo (Quartz Hill) Jackie Robinson (Littlerock) Loma Alta Park (Altadena) |
| 4 | Mayberry Park (South Whittier) Sorenson Park (Whittier) |
| 5 | Pamela Park (Duarte) Steven Sorenson Park (Lake Los Angeles) Val Verde Park (Castaic) |

*10 PARKS ADDED IN 2018


Public Health

PAD Model

PAD is a proven model that provides a community-based framework for prevention and intervention

- Target populations are communities with high rates of poverty, crime, obesity and systems involved youth
- Offers extended hours of park operation when schools are closed
 - Summer: 8 weeks, Thurs-Sat, 6 pm-10 pm
 - Winter: 3 weeks, Thurs-Sat, 6 pm-10 pm
 - Spring: 1 week, Thurs-Sat, 6 pm-10 pm

*Added in 2018-19



PAD Addresses Important Service Gaps

- **Lack of safe spaces for physical activity and social recreation:**
 - No backyards and inability to afford membership to gyms, sports clubs, etc.
 - Fear of accessing parks, which are often times the sole resource (The California Endowment, 2010; Broyles et al., 2011)
- **Inequities in physical and mental health:**
 - Fear of accessing parks leads to social isolation, mental and physical health problems (Prevention Institute, 2010; Roman et al., 2008)
- **Lack of summer programs:**
 - CoLA invests an estimated \$45 per youth vs \$870 in San Francisco and \$310 in New York City; correlated with high crime (LA4Youth, 2016)
- **Limited trust of law enforcement and other government agencies**
 - 43% of CoLA residents do not believe law enforcement treats all citizens equally (LMU, 2016)
- **Lack of social cohesion**
 - Social/community cohesion is an important protective factor against violence and poor mental health, but only 54% of South LA residents feel a sense of belonging to their communities (2015 LACHS)

Services Offered

- **Recreational programming** – Team sports, fitness/dance classes, walking clubs, aquatics
- **Entertainment/cultural programming** – Concerts, movies, cultural shows
- **Educational & career programming:**
 - **Youth Employment & Volunteer Opportunities** – At-risk youth assist with PAD program implementation
 - **Workshops/Classes** – Health and safety, nutritious cooking, healthy relationships, parenting skills, computer and financial literacy skills, etc.
 - **Juvenile Justice Jeopardy** (Public Defender's Office) – Provides youth with opportunities to learn about the criminal justice system
- **Resource Fairs** – In collaboration with numerous government and community-based organizations
- **Sheriff's Services** – patrol and community engagement

PAD Model - Collaboration

Lead: Department of Parks and Recreation

Partners:

- County Board of Supervisors
- Chief Executive Office
- Mental Health
- Probation
- Children and Family Services
- Public Health
- Sheriff
- Many other county departments and community organizations



Public Health

2016 PAD Program Evaluation Results

University of California, Los Angeles (UCLA)

| |
|--|
| |
| |
| |
| |
| |
| |
| |
| |

Public Health

Overall Demographics of PAD Attendees

Most PAD attendees in 2016 were:

- Ages 22 and older (66%), female (66%), Latino (71%)
- Had incomes less than \$20,000 (52%)

| Age Group | Percentage |
|-----------|------------|
| 0-16 | ~10% |
| 17-21 | ~10% |
| 22-39 | ~45% |
| 40-59 | ~30% |
| 60+ | ~5% |

| Ethnicity | Percentage |
|----------------------------------|------------|
| Asian & Pacific Islander | ~10% |
| Latino | ~70% |
| Native American / Alaska Natives | ~20% |

| Income Level | Percentage |
|---------------------|------------|
| less than \$20,000 | ~52% |
| \$20,000 - \$39,999 | ~35% |
| \$40,000 and above | ~13% |

| |
|--|
| |
| |
| |
| |
| |
| |
| |
| |

Public Health


✓ PAD Achieves High Participation Rates and Increases Access to Programming & Services

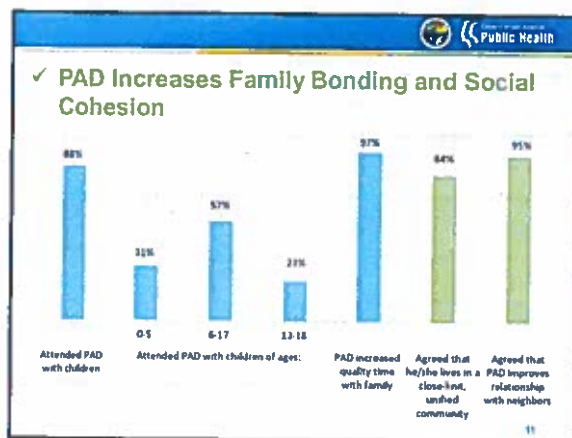
- 2016: More than 175,000 visits to the PAD parks
- Satisfaction: 94% would participate again / recommend

| |
|--|
| |
| |
| |
| |
| |
| |
| |
| |

✓ PAD Increases Physical Activity Rates and Reduces the Risk of Chronic Disease

- 83% of PAD participants engaged in physical activity during PAD, including those who indicated a sedentary lifestyle.





Examples


"These programs are more family oriented and they unite families."

"We met so many families and neighbors we hadn't seen before. We realized the diversity in our neighborhood we had never experienced. Our kids were able to connect with kids that they only saw at the park. It was a good experience." (Allen Martin Park)

"We actually had a troubled female teen who was gang affiliated volunteer and became a positive role model during the summer. The young lady's mother was so happy that she started crying, seeing her daughter do something positive with herself, instead of running away all the time and gang banging." (Jesse Owens Park)

✓ PAD Decreases Violence and Increases Perception of Safety


- Roughly 81 Part I crimes and 91 Part II crimes were avoided during PAD operation from 2010-2016
- 97% felt safe at PAD
- 95% agreed that PAD improved relationships with Deputies



43

✓ PAD Increases Collaboration

- Key informants rated collaboration very high: 3.0-3.7 / 4
- 95% of resource fair agencies agreed PAD makes it easier to reach their target population
- Probation Department investment in prevention:
 - "PAD allows our Department to find more ways to reach out to the community. We can identify at-risk populations and provide services in a safe place with the hope of keeping young people from becoming involved in the criminal justice system."




44

Example - PAD incorporated in multisector initiatives

| | | | |
|---------------------------------------|---|---|---------------------------------------|
| Chronic Disease & Violence Prevention | Coordinated Health Services & Trauma Prevention | Child & Family Well-being | Social Equity for Boys & Men of Color |
| DPH Strategic Plan | LA Health Agency Strategic Priorities | Office of Child Protection Strategic Plan | My Brother's Keeper Initiative |

45

 **Public Health**

✓ **PAD Achieves Cost Savings**

| Estimated Cost Savings, 2016 | |
|--|--------------------|
| Estimated chronic disease costs avoided | \$510,000 |
| Estimated criminal justice costs avoided | \$5,866,000 |
| Total estimated costs avoided | \$6,376,000 |
| PAD budgeted cost (2016) | \$2,301,000 |

15

 **Public Health**

Contact Information

Tatevik (Tina) Magakyan, PAD Coordinator
 Department of Parks and Recreation
 - Email: Tmagakyan@parks.lacounty.gov
 - Phone: (626) 588-5353

PAD Health Equity Award Video <http://youtu.be/7u1wN8Pbg40>

Winner: The National Association of Counties Award in 2010, the CA State Association of Counties Merit Award in 2011, the National Recreation and Parks Association Best of the Best Award in 2012 and the Health Equity Award in 2014

Competitive Grants and TAP Calendar

| PROGRAM | FUND CATEGORY | FREQUENCY | YEAR 1 FY 18/19 | YEAR 2 FY 19/20 | YEAR 3 FY 20/21 | YEAR 4 FY 21/22 | YEAR 5 FY 22/23 | YEAR 6 FY 23/24 | YEAR 7 FY 24/25 | YEAR 8* FY 25/26 | YEAR 9* FY 26/27 | YEAR 10* FY 27/28 | YEAR 11* FY 28/29 | YEAR 12* FY 29/30 | YEAR 13* FY 30/31 | YEAR 14* FY 31/32 |
|------------------------------|----------------------|-----------|--------------------|--------------------|--------------------|--------------------|--------------------|--------------------|--------------------|---------------------|---------------------|----------------------|----------------------|----------------------|----------------------|----------------------|
| Technical Assistance Program | Program 6 Innovation | 1 year** | \$2,822,100 | \$3,069,900 | \$3,591,900 | \$3,591,900 | \$3,591,900 | \$3,591,900 | \$3,591,900 | TBD | TBD | TBD | TBD | TBD | TBD | TBD |
| Planning and Design | Category 3 and 4 | 1 year | | Q4 \$2,500,000 | Q4 \$2,500,000 | Q4 \$2,500,000 | Q4 \$2,500,000 | Q4 \$2,500,000 | Q4 \$2,500,000 | Q4 \$2,500,000 | Q4 \$2,500,000 | Q4 \$2,500,000 | Q4 \$2,500,000 | Q4 \$2,500,000 | Q4 \$2,500,000 | Q4 \$2,500,000 |
| General Competitive | Category 3 and 4 | 4 years | | Q3 \$8,853,053 | | | | Q3 \$35,412,212 | | | | Q3 \$35,412,212 | | | | Q3 \$35,412,212 |
| Acquisition -only | Category 3 and 4 | 1 year | | Q3 \$2,213,263 | Q3 \$2,213,263 | Q3 \$2,213,263 | Q3 \$2,213,263 | Q3 \$2,213,263 | Q3 \$2,213,263 | Q3 \$2,213,263 | Q3 \$2,213,263 | Q3 \$2,213,263 | Q3 \$2,213,263 | Q3 \$2,213,263 | Q3 \$2,213,263 | Q3 \$2,213,263 |
| Recreation Access | Category 3 and 4 | 2 years | | Q1 \$3,699,904 | | Q1 \$7,399,808 | | Q1 \$7,399,808 | | Q1 \$7,399,808 | | Q1 \$7,399,808 | | Q1 \$7,399,808 | | Q1 \$7,399,808 |
| Youth and Veteran | Category 5 | 3 years | | Q2 \$3,605,035 | | | Q2 \$10,815,105 | | | Q2 \$10,815,105 | | | Q2 \$10,815,105 | | | Q2 \$10,815,105 |

* TAP funding after Year 7 is to be determined based on RPOSD's monitoring and assessment of the TAP.

** TAP funding is to be spent every year, with Years 1 and 2 being a pilot phase, Years 3 to 7 being the full program phase, and Years 8 and onward (as needed) to be the maturity phase.

Note: Fiscal year begins July 1 and ends June 30. Q1 is July-September; Q2 is October-December; Q3 is January-March; Q4 is April-June

Q = Fiscal year quarter when grant application is due

\$ = Total estimated amount of funds available during grant period

FIGURE 4-3. TAP FUNDING SCHEDULE

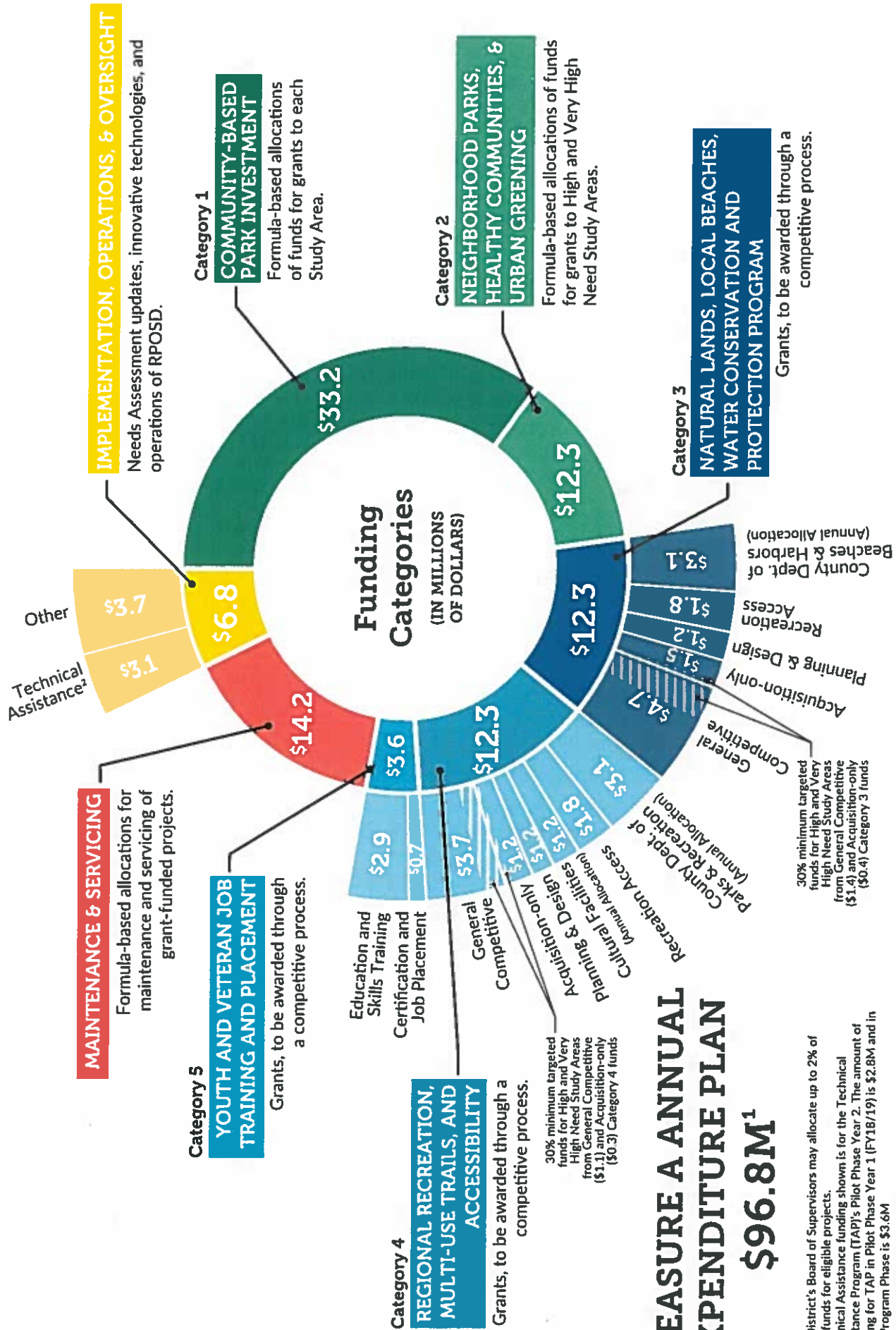


FIGURE 4-2. MEASURE A EXPENDITURE PLAN

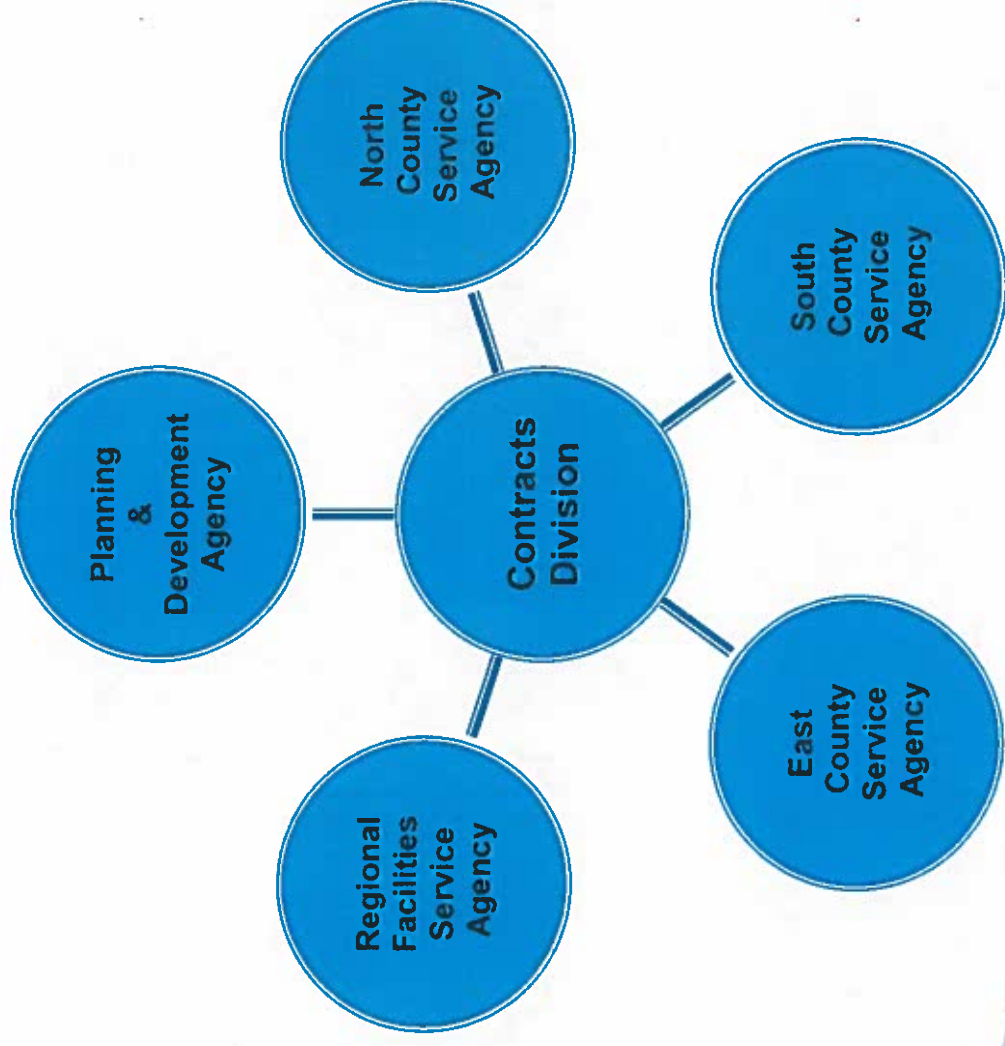
Department of Parks and Recreation Contracting Overview



April 2, 2018



Provide Administrative Support to the Department



Contracted Services

- Landscape/Park Maintenance Services
- Facility Security Services
- Festivals/Tennis/Equestrian Services
- Golf Services
- Land Lease/use Agreements (Head Start Programs)
- Telecommunications (Cell Towers)
- Food, Bait, and Boat Services
- Museum/Nature Center/Botanical Gardens Operations



CONTRACTS DIVISION

The Two Principal Functions of the Division are:

- Contract Administration
- Contract Development



Contract Administration

- Monitor Prop A Contracts for compliance with the Living Wage Ordinance (LWO).
- Conduct monthly contract and field inspections and review revenue statements and insurance documents.
- Investigate and handle contractor employee complaints regarding LWO.
- Work with ISD as required by LWO guidelines.



Approximately 123 Contracts/ Agreements

- 32 Service Contracts (Prop A / Non-Prop A)
- 35 Land Lease Agreements
- 18 Concession Agreements
- 10 Operating Agreements
- 17 Golf Contracts
- 3 License Agreements
- 6 As-Needed/Master Agreements
 - ✓ 33 individual Contracts/ Various MOUs
- Specialty Agreements



FY 2016-17 Revenue and Cost

- **\$17,190,886** Actual received from Revenue Generating Agreements.
- **\$6,049,851** Actual paid for Service Contracts/Agreements



Contract Development

- Develop and Prepare Solicitation Documents and Contracts.
- Prepare Contract Amendments, Change Notices, Contract Extensions, and Contract Assignments.
- Prepare Encumbrance Reports.
- Other Special Projects.



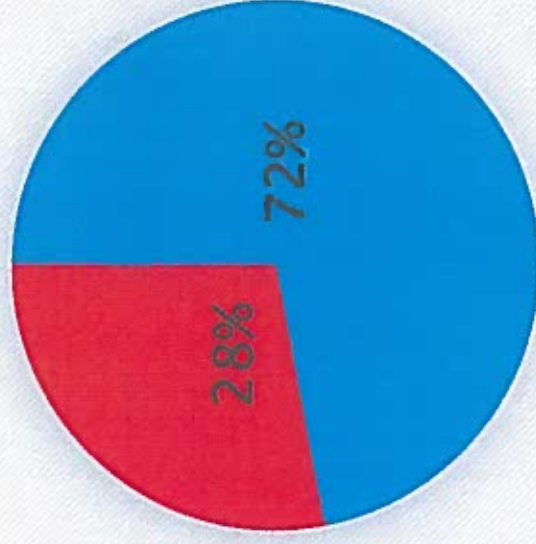
Contract Development

14 New Contracts/Agreements were Completed in
Calendar Year 2017

- 7 Concession Agreements.
- 3 Golf Contracts.
- 3 Land Lease Agreements.
- 1 Prop A Contract.



2017 Achieved Contract Award

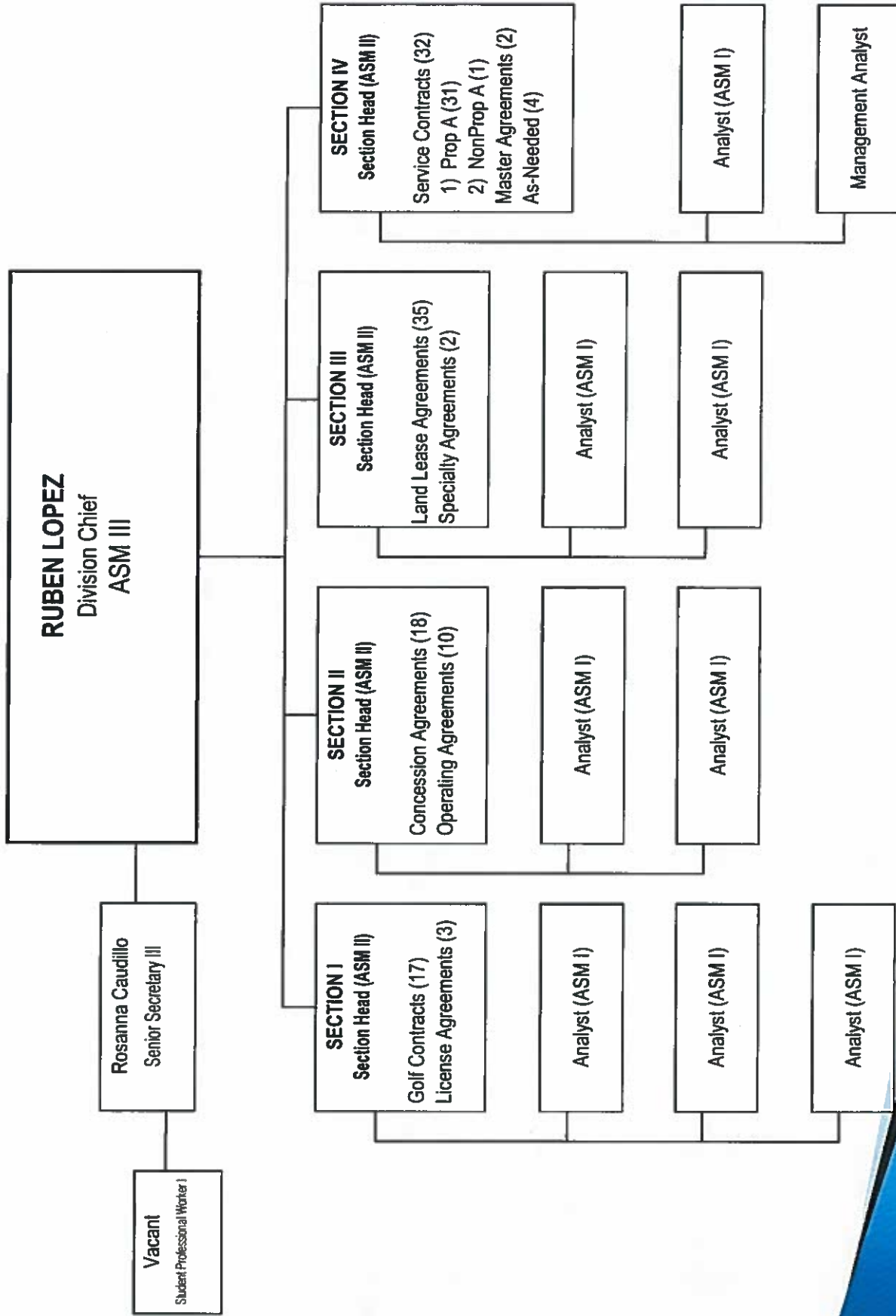


■ Request for Proposals (RFP) – 11 ■ By Negotiation – 3

New Direction

- Restructure the Division
- Golf Contracts from Golf Operations to Division.
- Increase utilization of Requests for Information
- Strengthen Procedures





Reorganization of Division

- Centralize Contracts/Agreements in Sections by Type.
- Subject Matter Experts.
- Better Customer Services to both Internal and External Clients.
- Better Control of workload/Consistency in Contract Administration.



Request for Information (RFI)

A Market Survey Used to:

- ▶ Solicit Information and interest Level from potential vendors
- ▶ Gather Information on new developments in certain industries
- ▶ Identify budget estimates
- ▶ Does not result in award

Info Requested:

- ▶ Availability of new technology
- ▶ Current and most up-to-date approaches
- ▶ Pricing or Share of Revenue

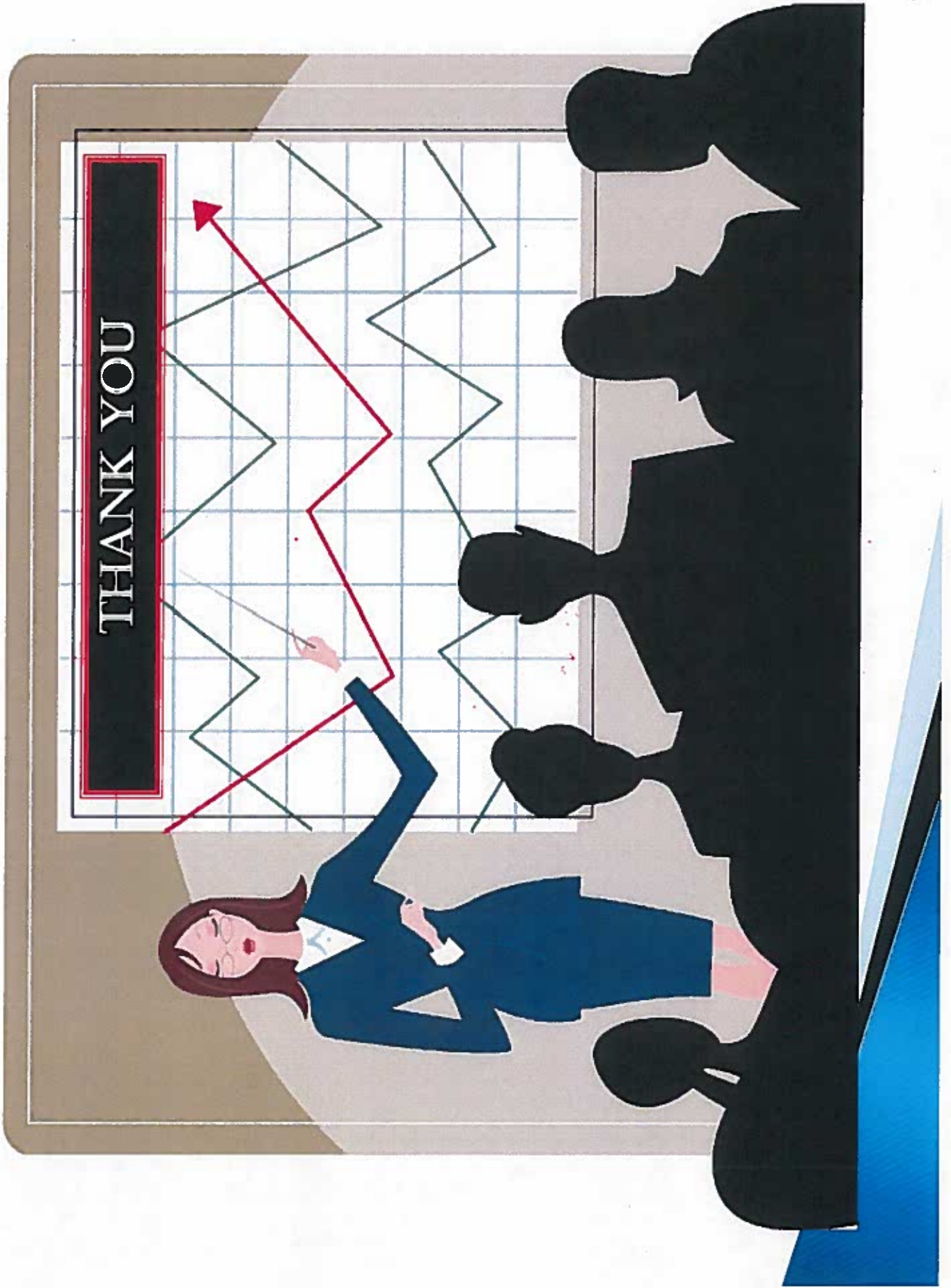
Strengthening Procedures

- Centralizing Contracts/Agreements in sections by type.
- Implement new controls to track ongoing solicitations throughout the entire process.
- Strengthening contract compliance by revamping internal quality assurance tools.



Questions or Comments







Budget Update

COUNTY OF LOS ANGELES

DEPARTMENT OF PARKS AND RECREATION



FY 2017-18 Budget Status

DPR Budget Issues

► Revenue Shortfall

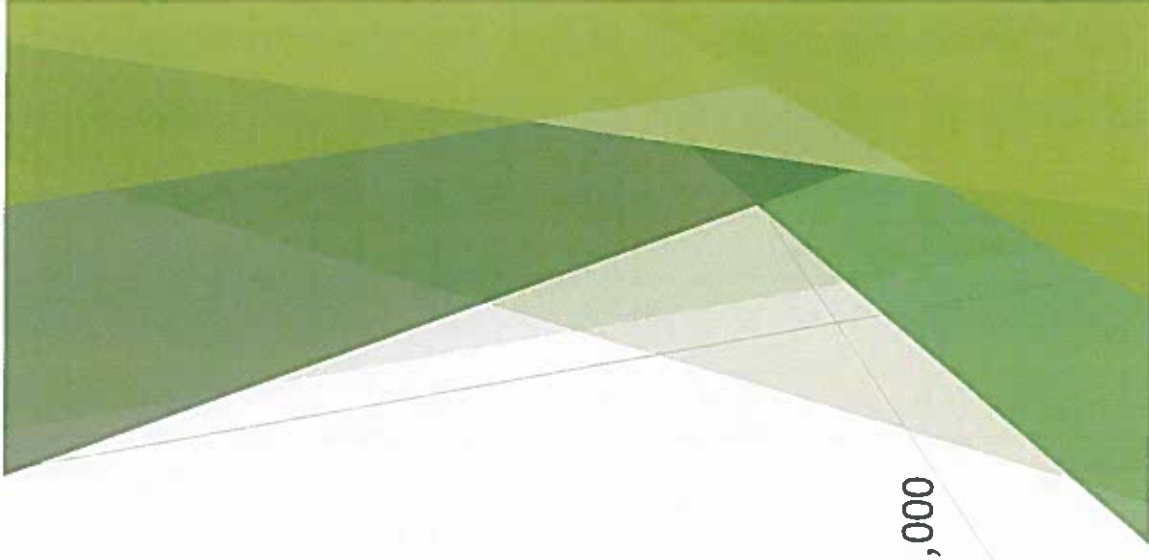
- Golf Revenue - \$1,200,000

► S&EB Shortfall

- Employee Benefits - \$3,463,000

► Services and Supplies

- Water - \$1,015,000
- Complaints and Claims Administration and Investigation - \$1,997,000
- Alhambra Headquarters - \$897,000



FY 2017-18 Budget Status

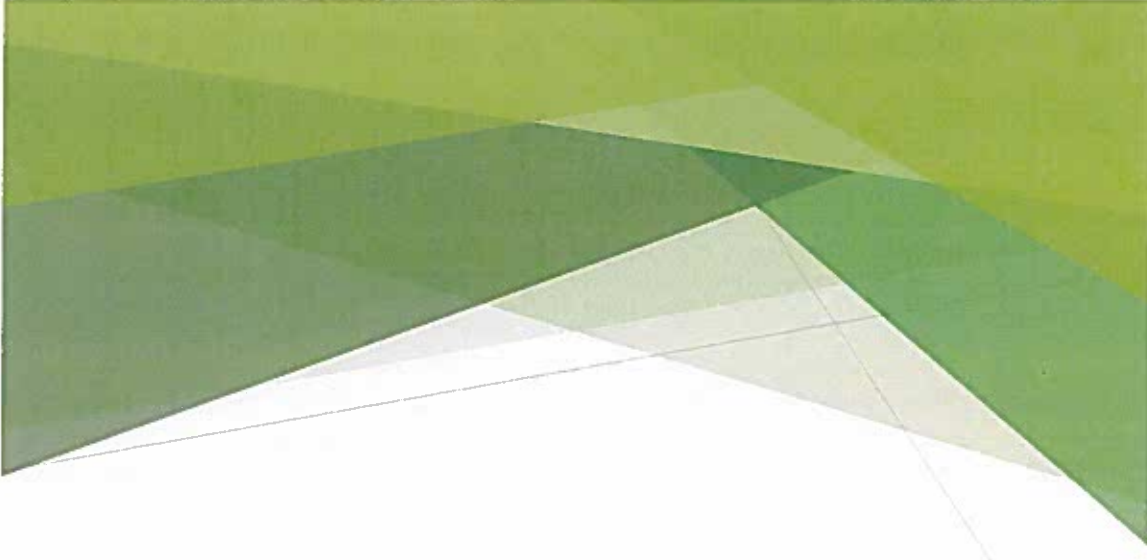
► Board Motions

- Golf Consultant - \$250,000
- Prop A Contract Living Wage Compliance - \$135,000

► Critical Repairs

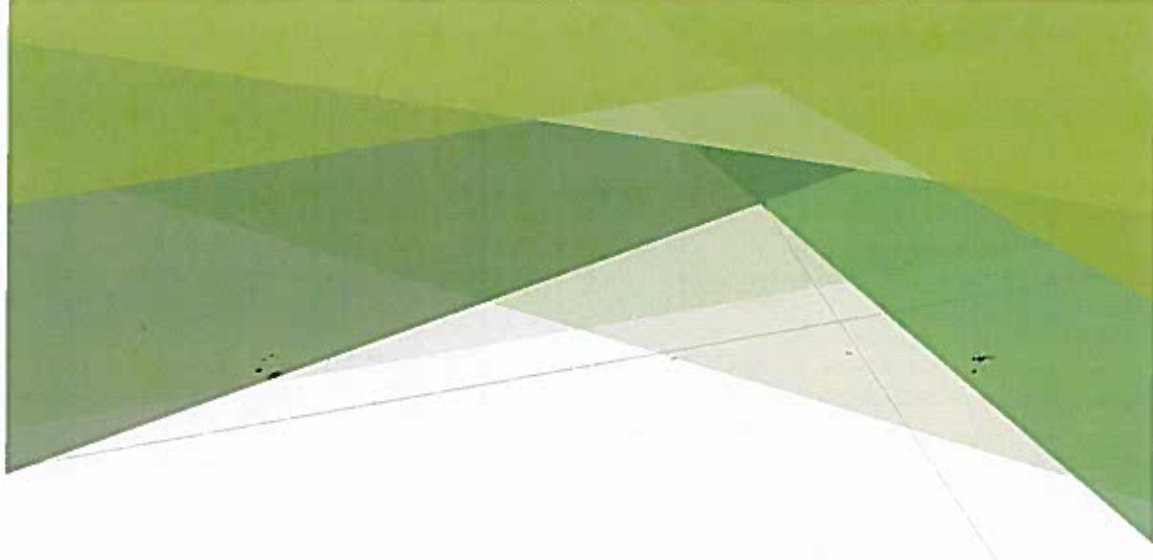
- Enterprise Pool - \$150,000
- Helen Keller Pool - \$250,000

TOTAL DPR Budget Issues - \$9,357,000



FY 2017-18 Budget Status

| | |
|-----------------------------|--------------------|
| Total DPR Budget Issues | \$9,357,000 |
| Solutions Identified by DPR | <u>\$6,857,000</u> |
| Remaining Budget Issues - | \$2,500,000 |



FY 2018-19 Budget Request

Funding Issues

Water Cost Increases - Deferred

- ▶ 26% Increase from Los Angeles Department of Water and Power due to Five-Year Rate Hike to Eliminate Government Rate; Year 4 - Ongoing \$240,000
- ▶ Continuation of One-time Funding for Water Costs at Altadena (\$144,000) and Eaton Canyon (\$169,000) Golf Courses - Ongoing \$313,000

Board Motion - Proposition A Contracts Compliance with Living Wage - Denied

- ▶ 29 Landscape and Security Services Contracts - Ongoing \$608,000

FY 2018-19 Budget Request

Use of Measure A Funds in DPR's Operating Budget - Deferred

- ▶ Backfill Revenue Shortfall Due to the Sunset of 1992 Proposition A - One-time \$845,000
- ▶ New Positions to Administer Measure A Grants - \$701,000 (Revenue Offset)

Other Funding Issues - Deferred

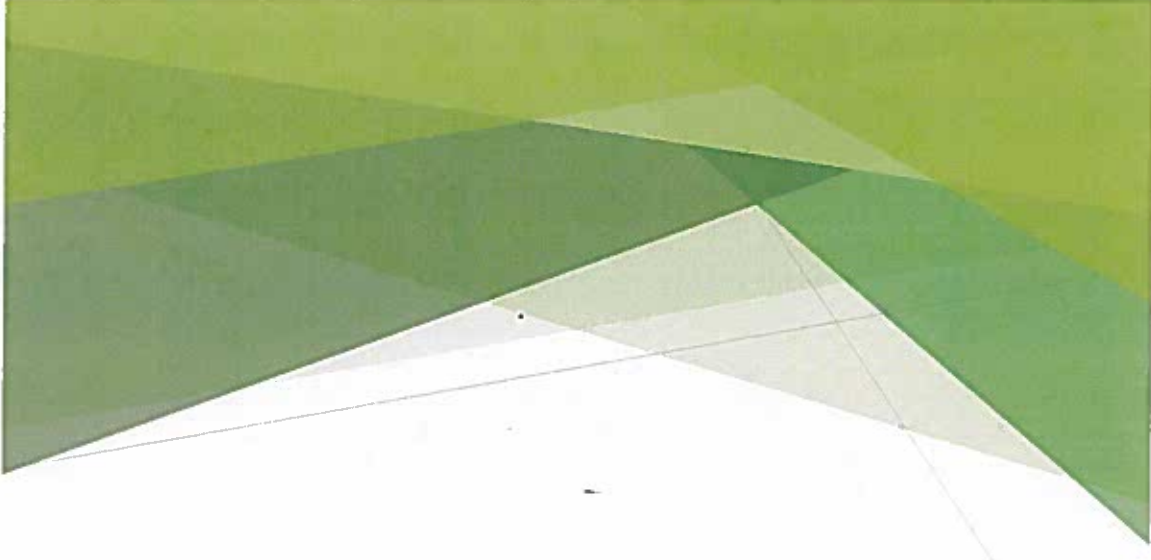
- ▶ Pay-Down of Tenant Improvement and Low Voltage System Costs for Alhambra Headquarters - One-time \$4,254,000
- ▶ Strengthen Aquatics Lifesaving Standards and Risk Mitigation
 - ▶ Phase 1 Implementation of Drowning Detection System Technology in 12 pools - One-time \$2,291,000

FY 2018-19 Budget Request

Board Motions

Parks After Dark (PAD) Program - Approved

- ▶ Department of Mental Health - \$3,691,000
- ▶ Probation Department - \$1,000,000
- ▶ Department of Public Health - \$190,000



FY 2018-19 Budget Request

Year-Round and Extended Swimming at County Pools and Lakes - Deferred

- ▶ Year-round Swimming at Three Aquatic Centers: \$ 4,652,000
- ▶ Extended Swimming at 25 Seasonal Pools from 10 to 12 weeks: \$601,000
- ▶ Extended Swimming at Three Swim Beach Lakes from 4 to 7 days: \$711,000

New Facilities Request - Deferred

- ▶ Operating Cost for 13 New Facilities/Amenities - \$1,651,000

FY 2018-19 Budget Request

| | |
|-----------------------------|--------------------------------------|
| \$142,282,000 | Salaries and Employee Benefits |
| 54,202,000 | Services and Supplies |
| 11,581,000 | Other Charges |
| 796,000 | Capital Assets |
| 300,000 | Other Financing Uses |
| <u>\$209,161,000</u> | Gross Appropriation |
| (6,424,000) | Intrafund Transfers from Departments |
| <u>\$202,737,000</u> | Net Appropriation |
| 46,670,000 | Less: Revenue |
| <u>\$156,067,000</u> | Net County Cost |