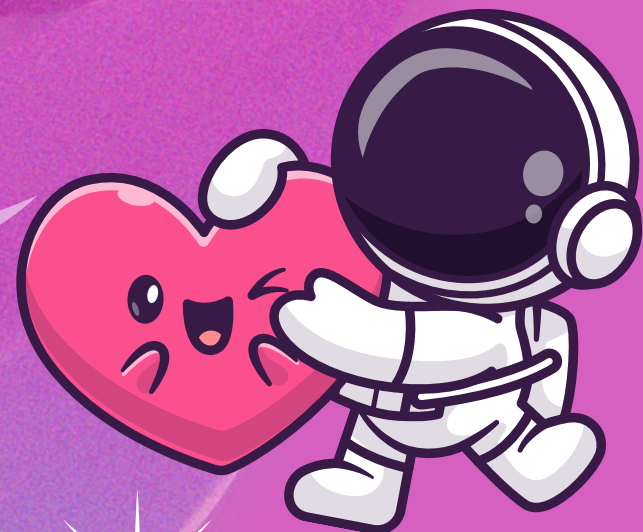
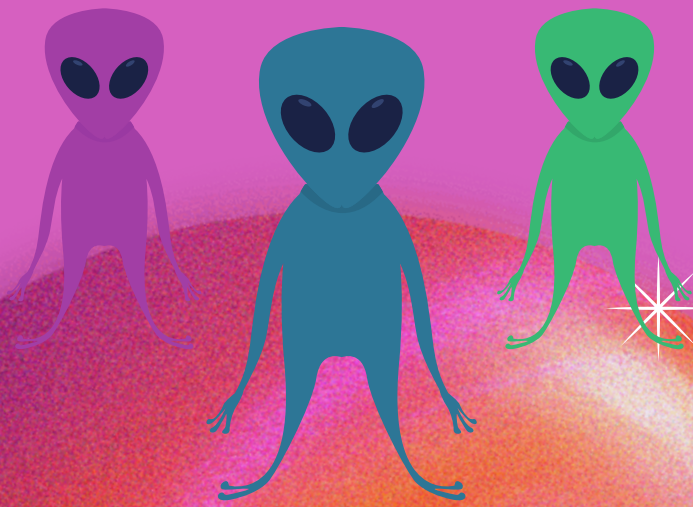
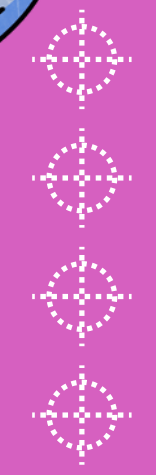


PLANETA SANACION

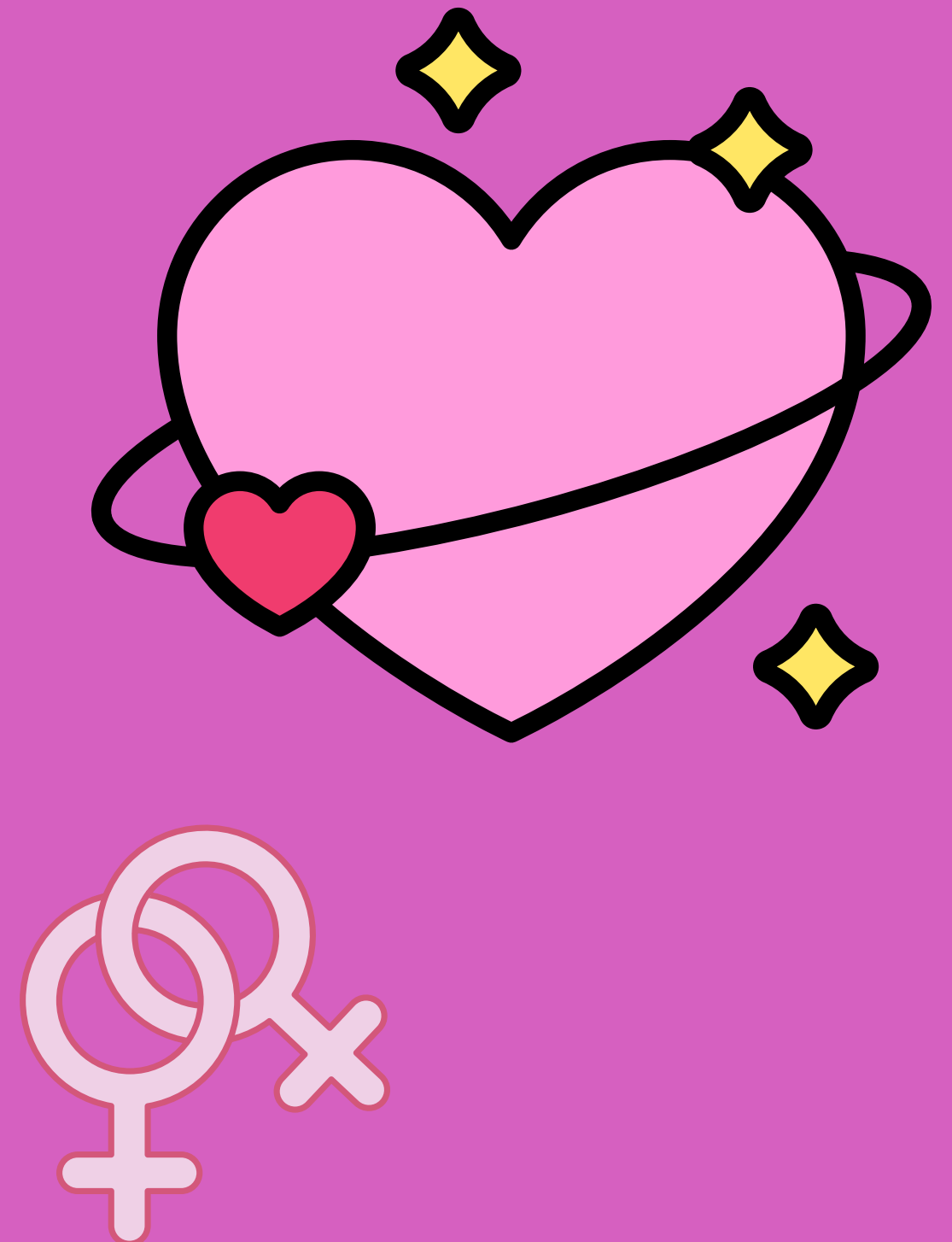


By Neyva and Hunter



MISSION STATEMENT

TO DESTIGMATIZE
CULTURAL NORMS &
NORMALIZE LESBIAN
LATINE INCLUSION.
BECAUSE IT'S NOT
PREDOMINANT IN OUR
CURRENT SOCIETY.

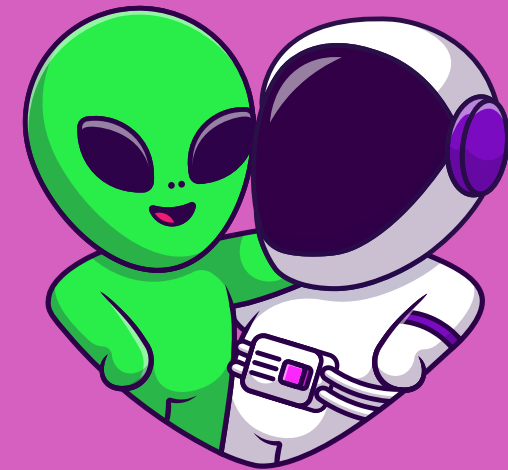
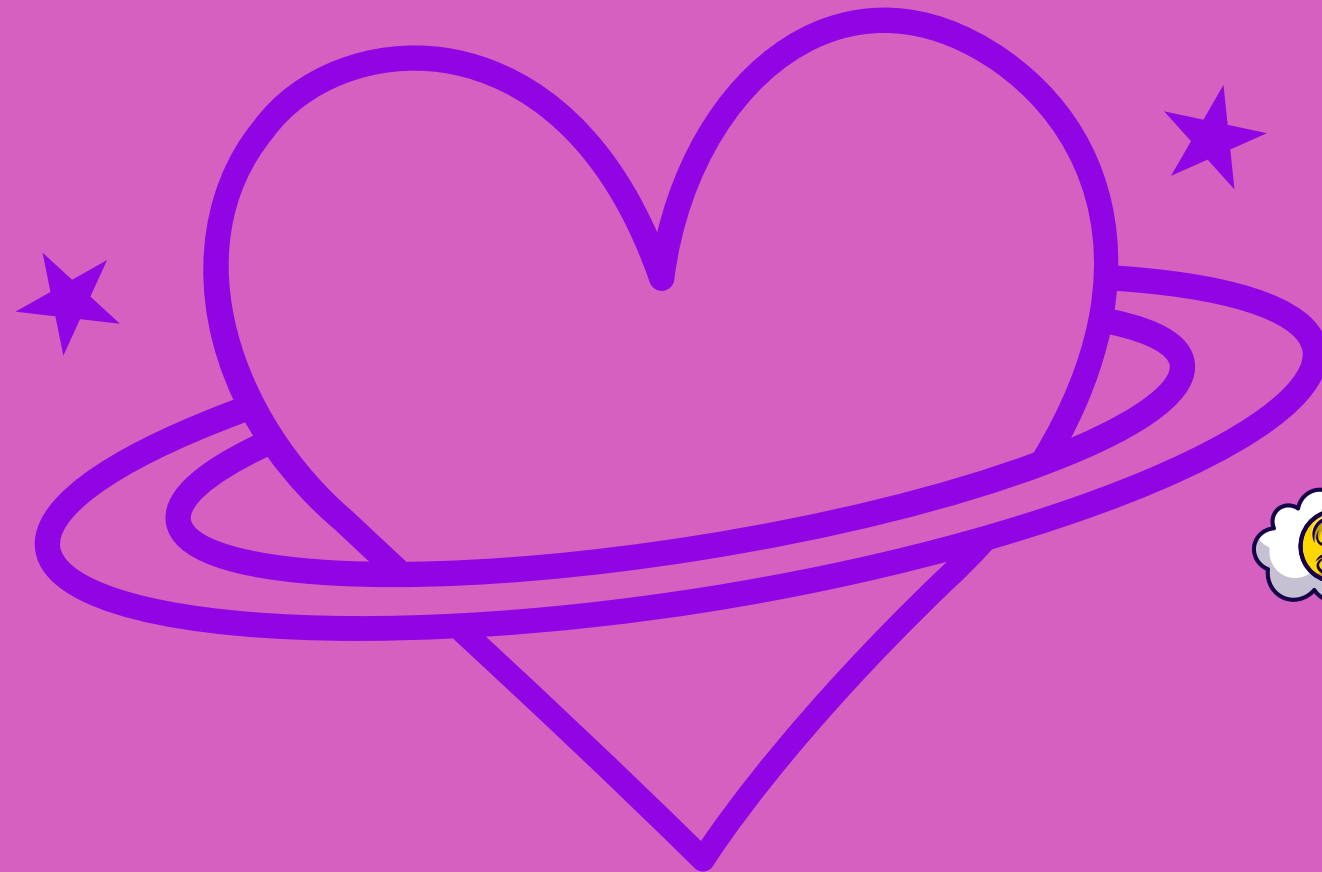


USER GROUP

LESBIAN LATINE PEOPLE

13-24+ (TRANSITIONAL AGED YOUTH)

SELA/DTLA/SFV

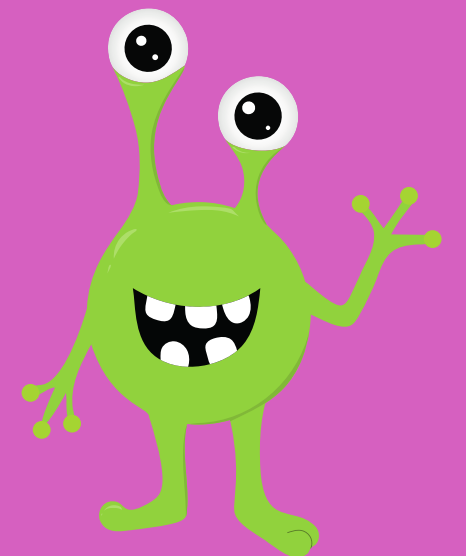
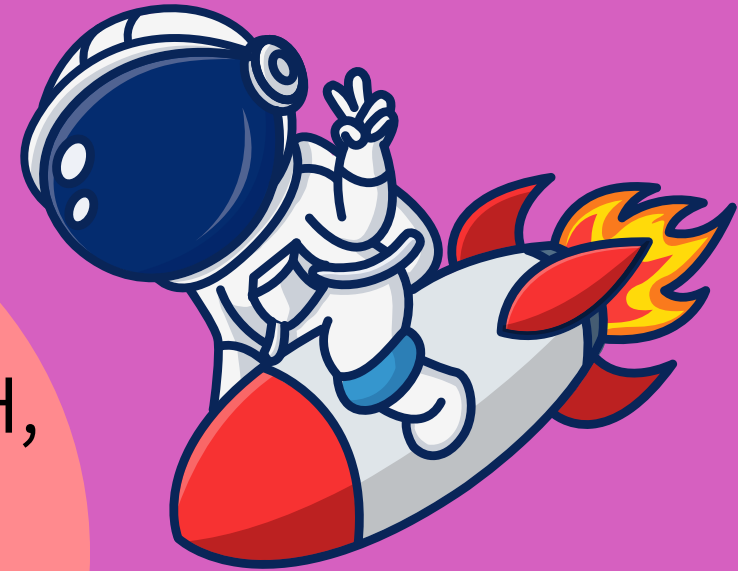


TYPES OF VIOLENCE & ISSUES IMPACTING OUR USER GROUP

INTIMATE
PARTNER
VIOLENCE,
ERASURE

HOMOPHOBIA,
RACISM

MENTAL HEALTH,
ADVERSITIES,
FAMILIAL
DYSFUNCTION





HOW DOES THE STRATEGY IMPACT THE USER GROUP?

23% threatened
to kill past or
current partner

45%
punched or
hit a
partner

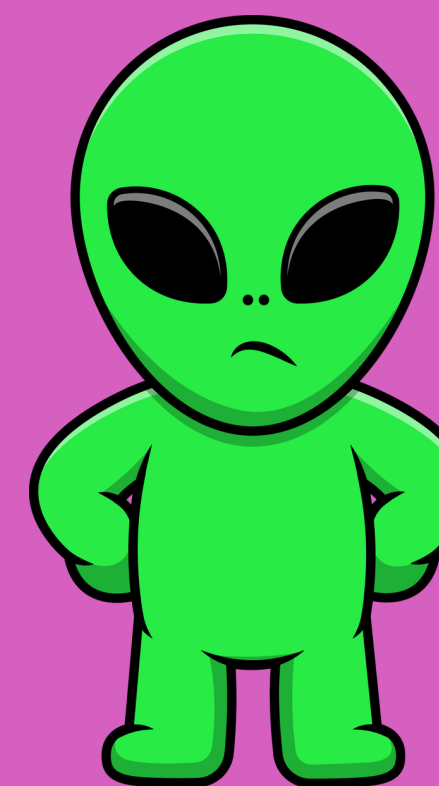
31%
threatened to
kill partner

43% pushed
or hit by
partner

17% Discriminated
because of race in
caucasian lgbtqia2s
communities

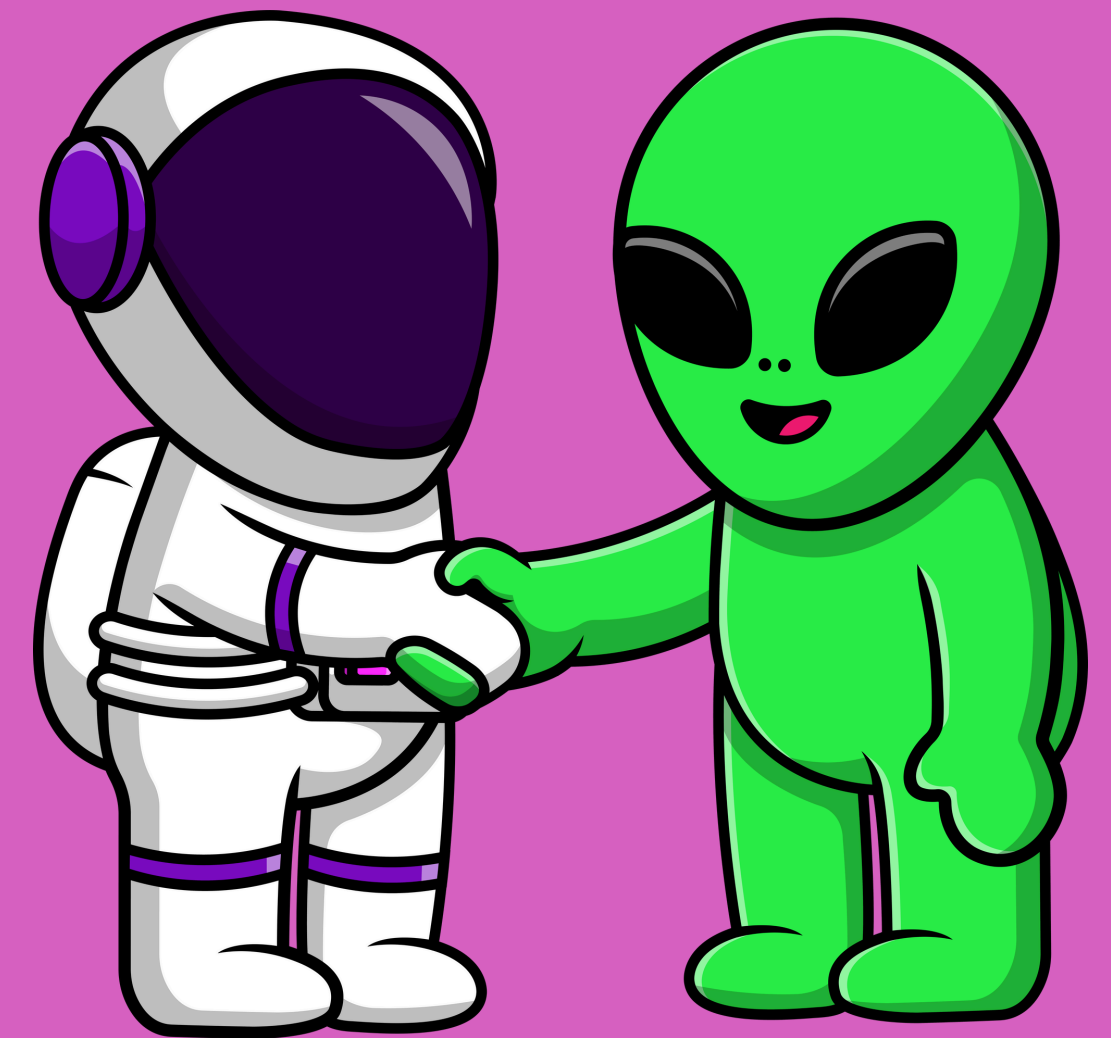
48% said there was
racism from the
latine community

49% Female
Partner
isolated from
family and
friends

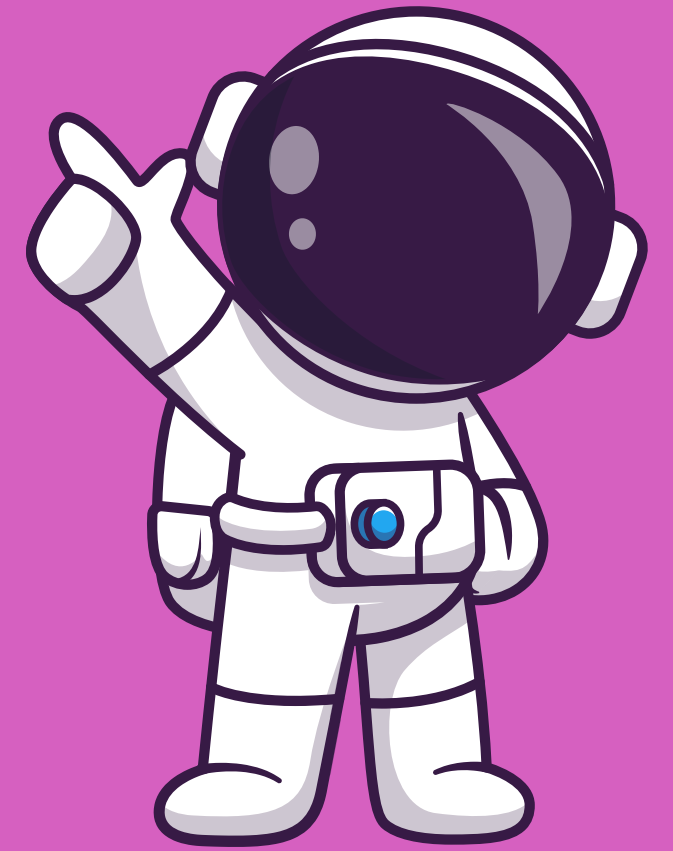


STRATEGY PROPOSAL

MENTORSHIP FOR BOTH YOUTH & ADULTS
HYBRID MONTHLY WORKSHOPS PERTAINING TO
ISSUES WITHIN LATINE LESBIAN COMMUNITY
(INTIMATE PARTNER VIOLENCE, HOMOPHOBIA,
ERASURE, MENTAL HEALTH, FAMILIAL
DYSFUNCTION, ETC) FOR 3-6 MONTHS LEADING UP
TO AN INCETIVIZED 3-7 DAY ANNUAL RETREAT. POST
RETREAT, WE WOULD WORK WITH CLIENTS ONE ON
ONE TO FIND JOB PLACEMENT, MENTAL
HEALTHCARE, CONTINUE WITH THE MENTORSHIP,
WORKSHOPS, AND THEIR OVERALL JOURNEY WITH
RECOVERY



INCENTIVE



THE MENTORSHIP AND WORK WOULD LEAD UP TO A 3-7 DAY RETREAT IN NATURE. THERE WOULD BE 2 GROUPS (13-17) & (18-24+).

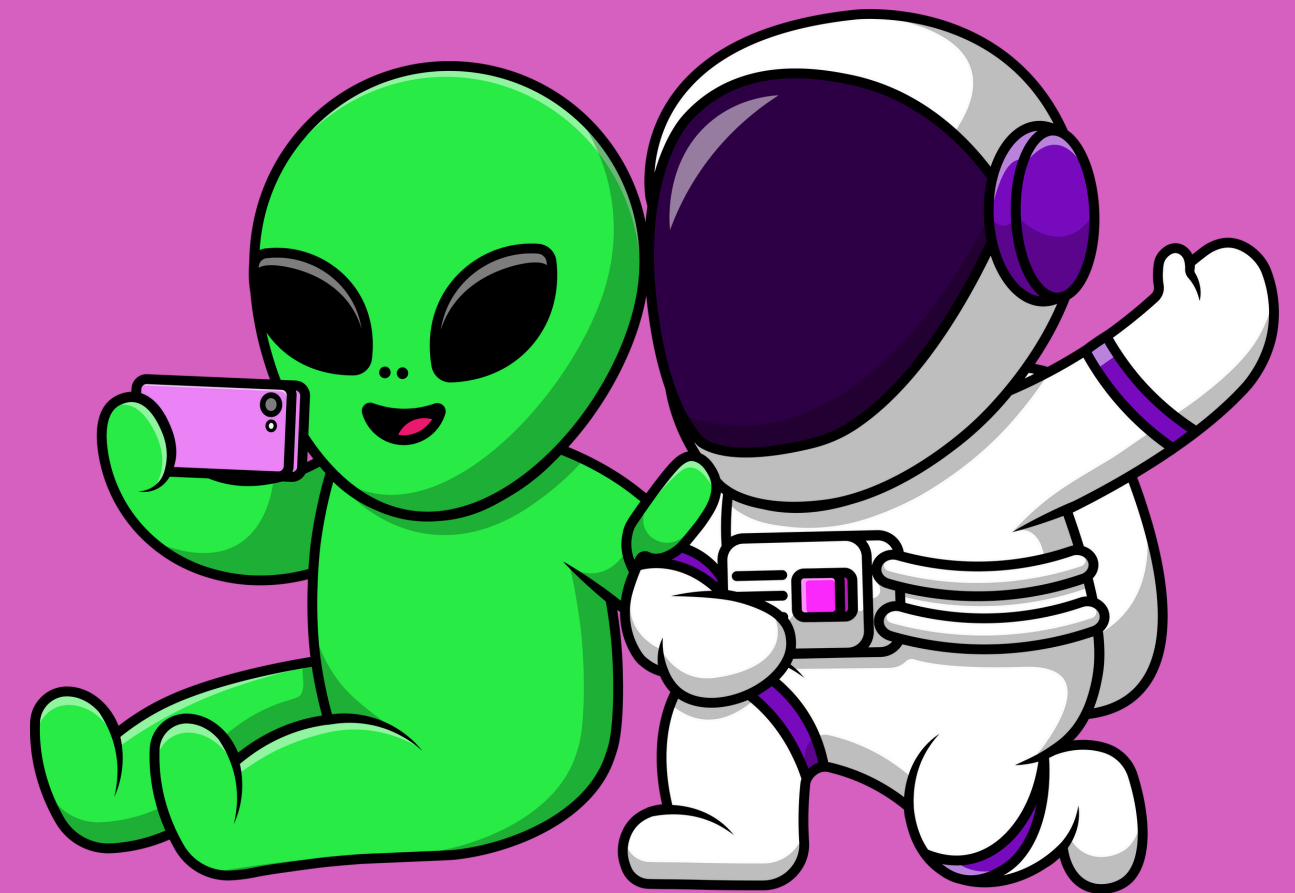
ACTIVITIES WOULD INCLUDE: BREATHWORK, SOUND MEDITATION, WALKS, DANCING, MUSIC MAKING, OPEN JAM, AS WELL AS BONDING OUTSIDE OF THESE ACTIVITIES.





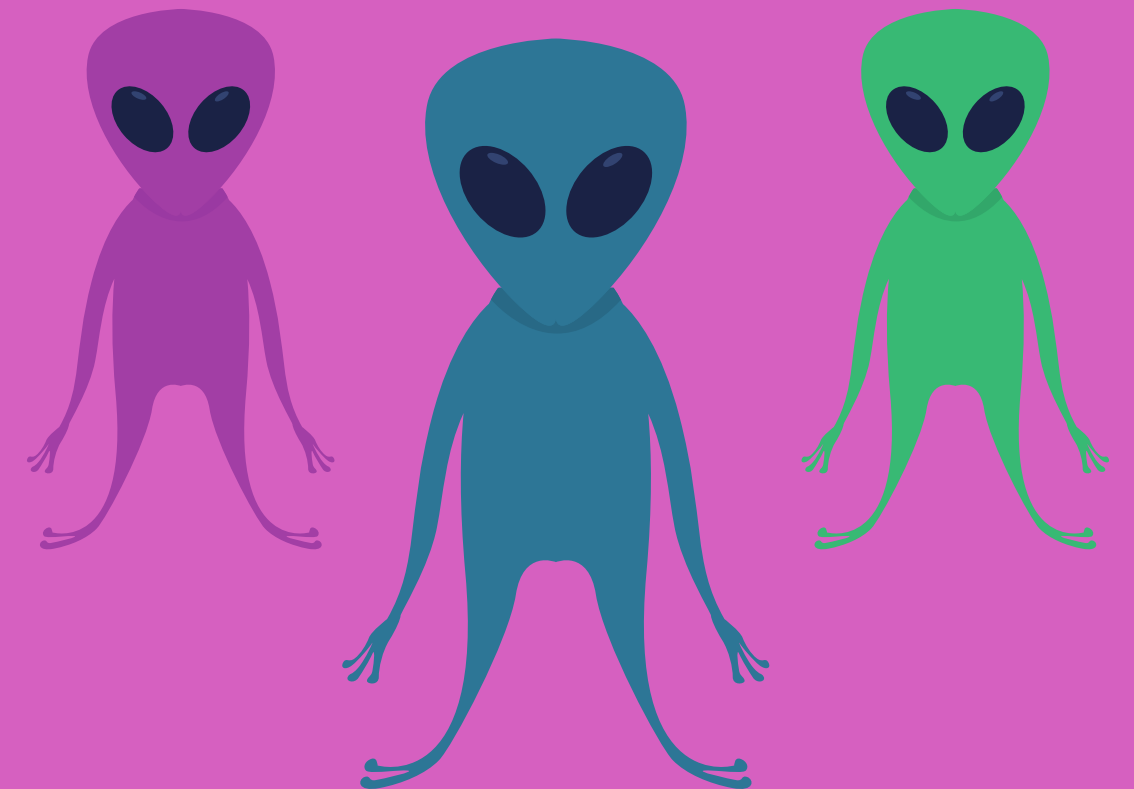
PARTNERSHIPS AND COLLABORATIONS

-MUJERES LATINAS EN
ACCION, TRANS LATINA
COALITION, NATIONAL
COALITION OF ANTI
VIOLENCE



PROTOTYPE TESTING

FREELANCE AND PARTNER WITH EXISTING ORGANIZATIONS TO SEE WHERE WE GET THE MOST SUPPORT, AS WELL AS OUTREACH WITHIN NIGHTLIFE AND CREATING LESBIAN LATINE SPACES.



\$100,000 BUDGET

EXPENSES WOULD COVER:

Mentorship/Workshop

Expenses:

* Venue Rental: \$5,000

*Workshop Facilitator Fees: \$15,000 (roughly for 6 bi monthly workshops with at least two facilitators)

*Materials/Supplies: \$3,000

*Food/Beverages: \$4,000

*Transportation for attendees as needed:
\$2,000-3,000

Total for Workshop/Mentorship:

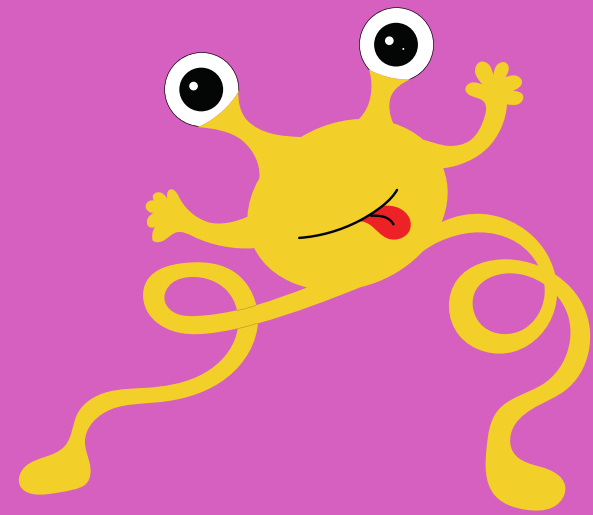
~\$29,000-\$30,000



\$100,000 BUDGET (CONT.)

EXPENSES WOULD COVER:

Retreat Expenses:



* Venue Rental: \$20,000

*Activities: \$10,000

*Food/Beverages: \$7,000

*Transportation for attendees as needed:
\$3,000-5,000

Total for Retreat: ~\$40,000-42,000

Scholarship/Administration/Other Expenses:

*Scholarship for Program Graduates:
\$5,000-\$10,000

*Administration: \$8,000

*Marketing: \$3,000

Contingency: \$2,000



Total: ~\$87,000-\$95,000

LET'S GO LESBIANS!!

