

# ▶▶ Alternative Crisis Services

Jaclyn Baucum

Deputy Director

Health Access and Integration

Los Angeles County Department of Mental Health



LOS ANGELES COUNTY  
**DEPARTMENT OF  
MENTAL HEALTH**  
hope. recovery. wellbeing.

# ▶▶ Alternative Crisis Services (ACS)

## DMH MHSA ACS Programs – HAI

- **Psychiatric Urgent Care Centers (UCC)**
- **Enriched Residential Services (ERS)**
- **Crisis Residential Treatment Programs (CRTP)**
- **Residential and Bridging Care (RBC) Program**
- Law Enforcement Teams (LET)
- Restorative Care Villages
- Psychiatric Mobile Response Teams (PMRT)

# ▶▶ Alternative Crisis Services: MHSA

## Intended Outcomes

- Reduce utilization of psychiatric emergency rooms and inpatient acute psychiatry
- Reduce incarceration of persons with severe and persistent mental illness

## Key Activities

- Divert clients as appropriate to mental health urgent cares
- Divert clients as appropriate to Crisis Residential Treatment Programs
- Utilize mental health clinician teams in the fields as alternatives to crisis response

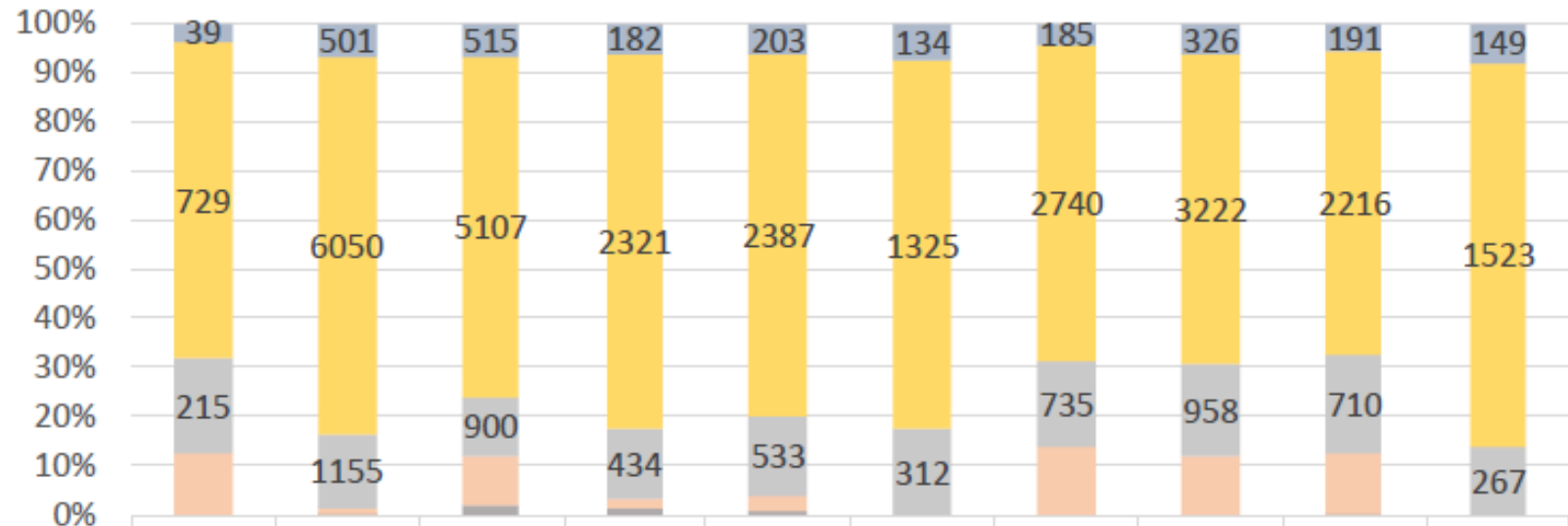
# ▶▶ Psychiatric Urgent Care Centers (UCC)

*Aka: Crisis Stabilization Units or MH Urgent Care Centers*

## Program Description

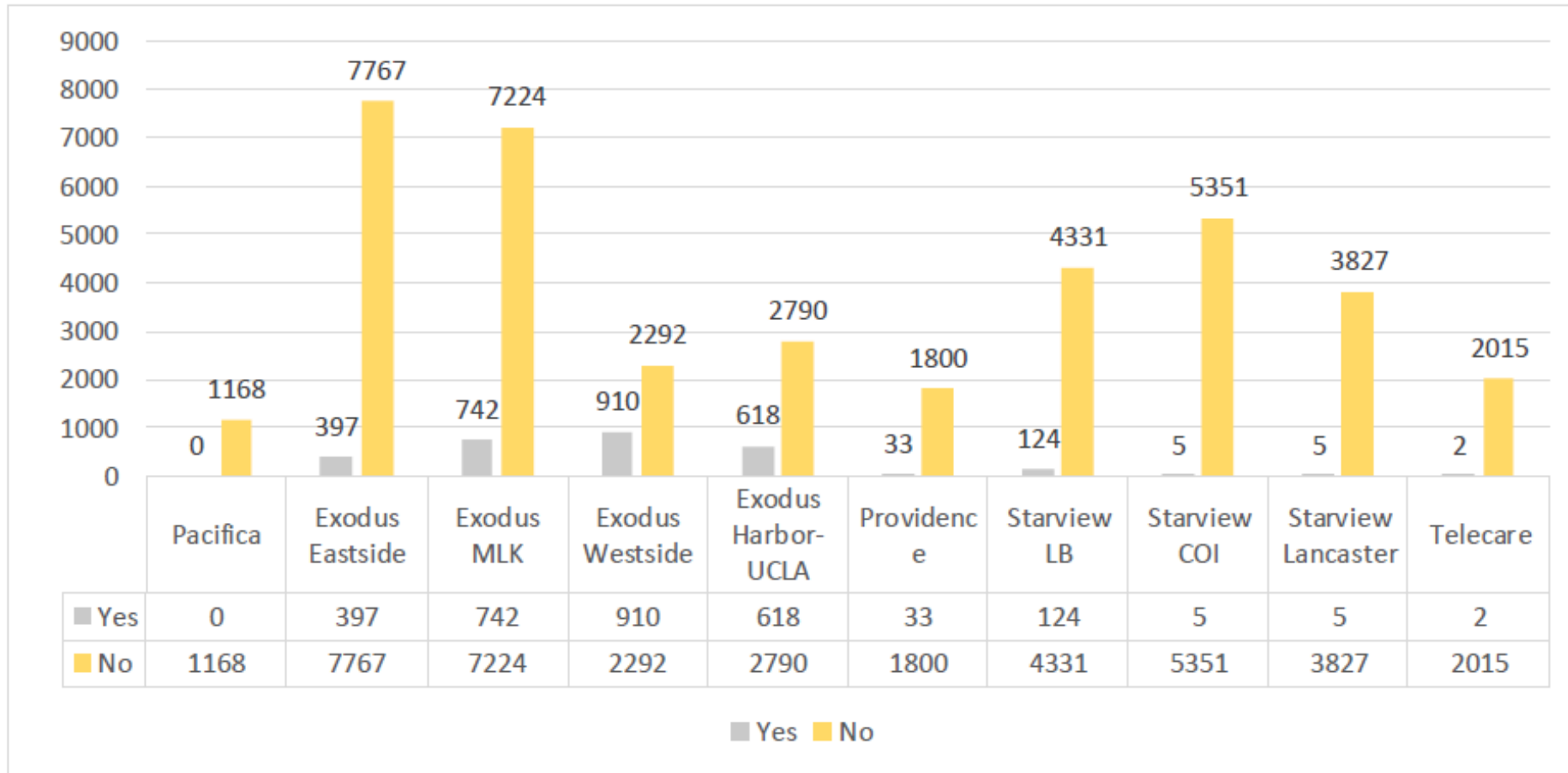
Medi-Cal certified and Lanterman Petris Short (LPS) designated free –standing crisis stabilization units that provide rapid access to mental health evaluation and assessment, crisis intervention and medication support 24-hours per day, 7 days per week.

# ▶▶ Figure 10: FY2023-24 UCC New Admissions by Age Group



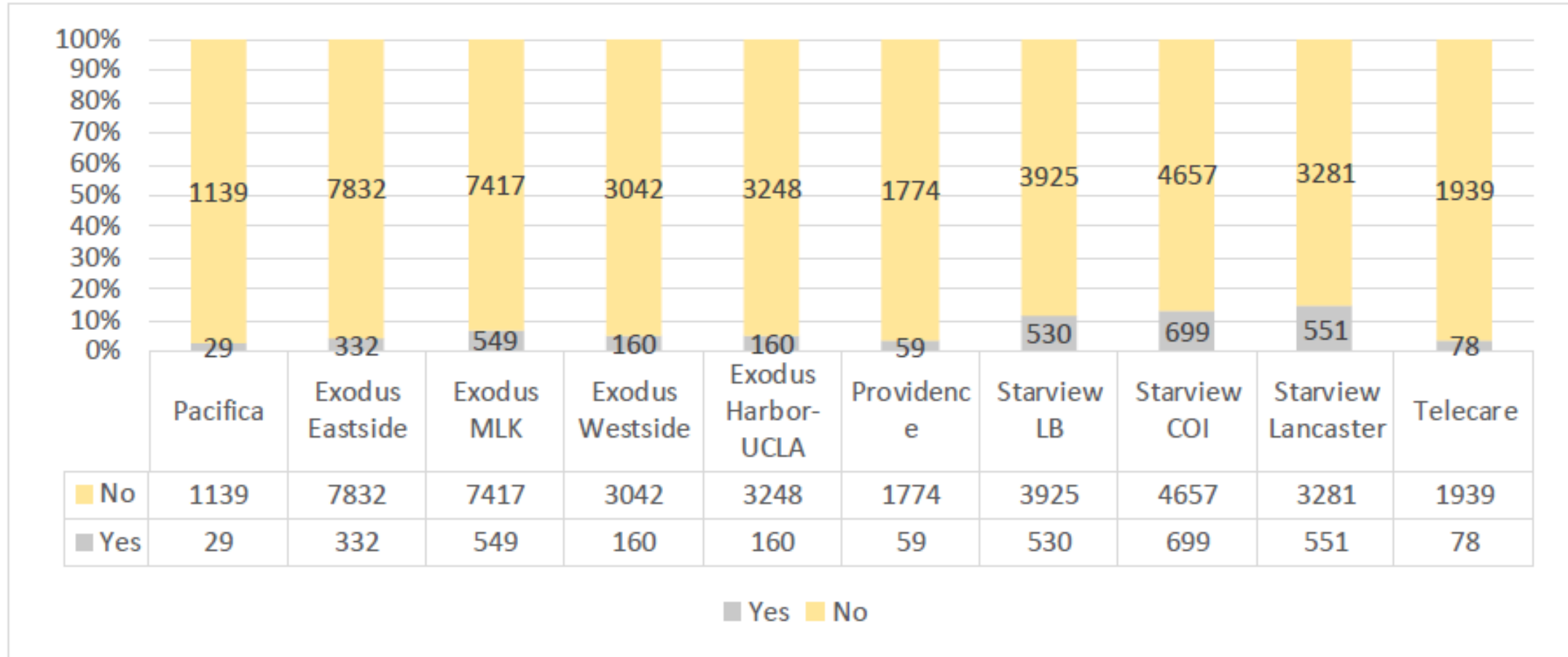
|                   | Pacifica | Exodus Eastside | Exodus MLK | Exodus Westside | Exodus Harbor-UCLA | Providence | Starview LB | Starview COI | Starview Lancaster | Telecare |
|-------------------|----------|-----------------|------------|-----------------|--------------------|------------|-------------|--------------|--------------------|----------|
| AGE:60+           | 39       | 501             | 515        | 182             | 203                | 134        | 185         | 326          | 191                | 149      |
| AGE :26-59        | 729      | 6050            | 5107       | 2321            | 2387               | 1325       | 2740        | 3222         | 2216               | 1523     |
| AGE :18-25        | 215      | 1155            | 900        | 434             | 533                | 312        | 735         | 958          | 710                | 267      |
| AGE :13-17        | 143      | 108             | 716        | 51              | 87                 | 0          | 593         | 625          | 454                | 0        |
| AGE: 12 AND UNDER | 0        | 18              | 179        | 54              | 38                 | 0          | 0           | 0            | 7                  | 0        |

# ▶▶ Figure 11: Clients with a Psychiatric Emergency Assessment within 30 Days of an UCC Assessment



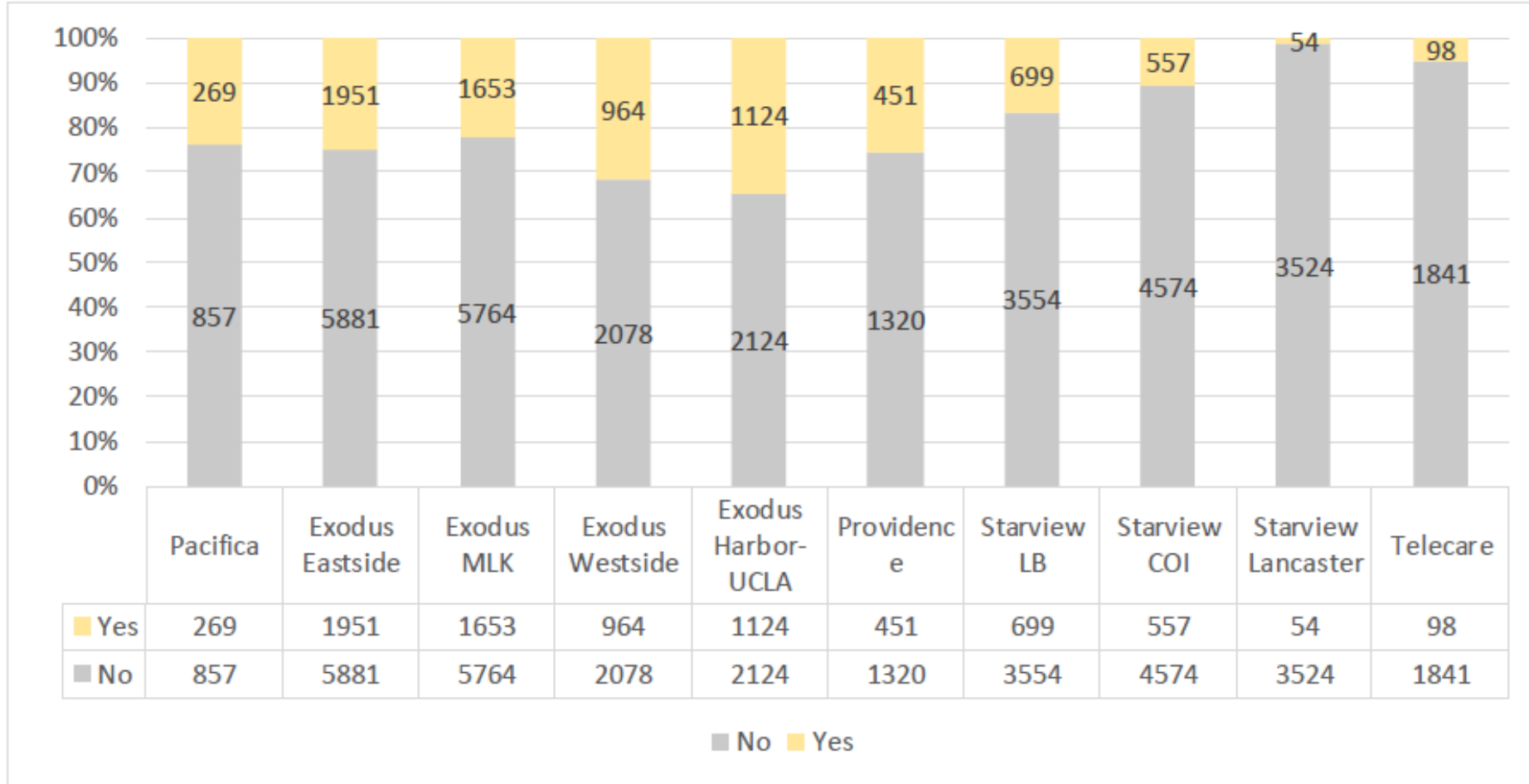
Note: These are visits not unique clients; assuming FY2023-24

# ▶▶ Figure 12: Clients Returning to UCC within 30 Days of Prior UCC Visit



Note: These are visits not unique clients; assuming FY2023-24

# ▶▶ Figure 13: Clients who were Homeless Upon Admission to UCCs



Note: Assuming FY2023-24



# ▶▶ Enriched Residential Services (ERS)

## Program Description

Assist clients transitioning from acute inpatient and institutional settings to the community by providing intensive mental health, substance abuse treatment and supportive services.

# ▶▶ Crisis Residential Treatment Programs (CRTTP)

## Program Description

- The Residential and Bridging Care (RBC) Program provides transition services from psychiatric hospital care to lower levels of care. The program ensures participants have what they needed to thrive in a lower level of care and when possible, to facilitate reintegration into the community.



# Capacity Expansion FY 2023-24 & FY 2025-27 Projections

|                        | MHUCC                           | ERS                           | CRTP   | FIT                   |
|------------------------|---------------------------------|-------------------------------|--------|-----------------------|
| FY 2023-24 Expansion   |                                 | 20 SCAs<br>12 Contracted beds | 5 CRTP | 42<br>Guaranteed beds |
| FY 2025-27 Projections | 4 UCC<br>Exploring EmPATH units | Exploring expansion           | 3 CRTP |                       |

# ▶▶ Residential and Bridging Care (RBC) Program

## Program Description

- Provide short-term, intensive, and supportive services in a home-like environment through an active social rehabilitation program.
- Individuals receive services including self-help skills, peer support, individual and group interventions, social skills, community re-integration, medication support, co-occurring services, pre-vocational/educational support, and discharge planning.
- Eligibility: Participants in locked or clinically enriched psychiatric facilities who would benefit from transitioning to community-based placement.

# ▶▶ Residential and Bridging Care (RBC) Program

## RBC

- Mental health peer advocates
- Clinical liaisons
- Supportive services in subacute placement
- Navigation support to stepdown

## County Hospital Adult Linkage Program

- LAGMC, Hawkins, Harbor UCLA, Olive View
- DMH clinical liaisons
- Consultant on DHS discharges
- Clinical review

# Questions?



LOS ANGELES COUNTY  
DEPARTMENT OF  
MENTAL HEALTH  
hope. recovery. wellbeing.