

CANS/PSC Webinar

May 16, 2024

LACDMH Quality, Outcomes and Training Division

EPSDT Outcomes Team



LOS ANGELES COUNTY
**DEPARTMENT OF
MENTAL HEALTH**
hope. recovery. wellbeing.

▶▶ Welcome and Introductions

EPSDT Outcomes Administration

Kara Taguchi, Mental Health Program Manager III

Samantha Wettimuny, Supervising Psychologist

Christine Tanimura, Clinical Psychologist II

Jackie Koshkaryan, Management Analyst

▶▶ Agenda

Data Analysis: PSC-35 Aggregate Data

- Approach to data
- Review results
- Discussion about the results
- Take home messages

Available Resources for Providers

Question and Answer

Data Analysis

PSC-35

FY 2022-2023



▶▶ WHO, WHAT, WHEN?



WHO: EPSDT Outcomes Team



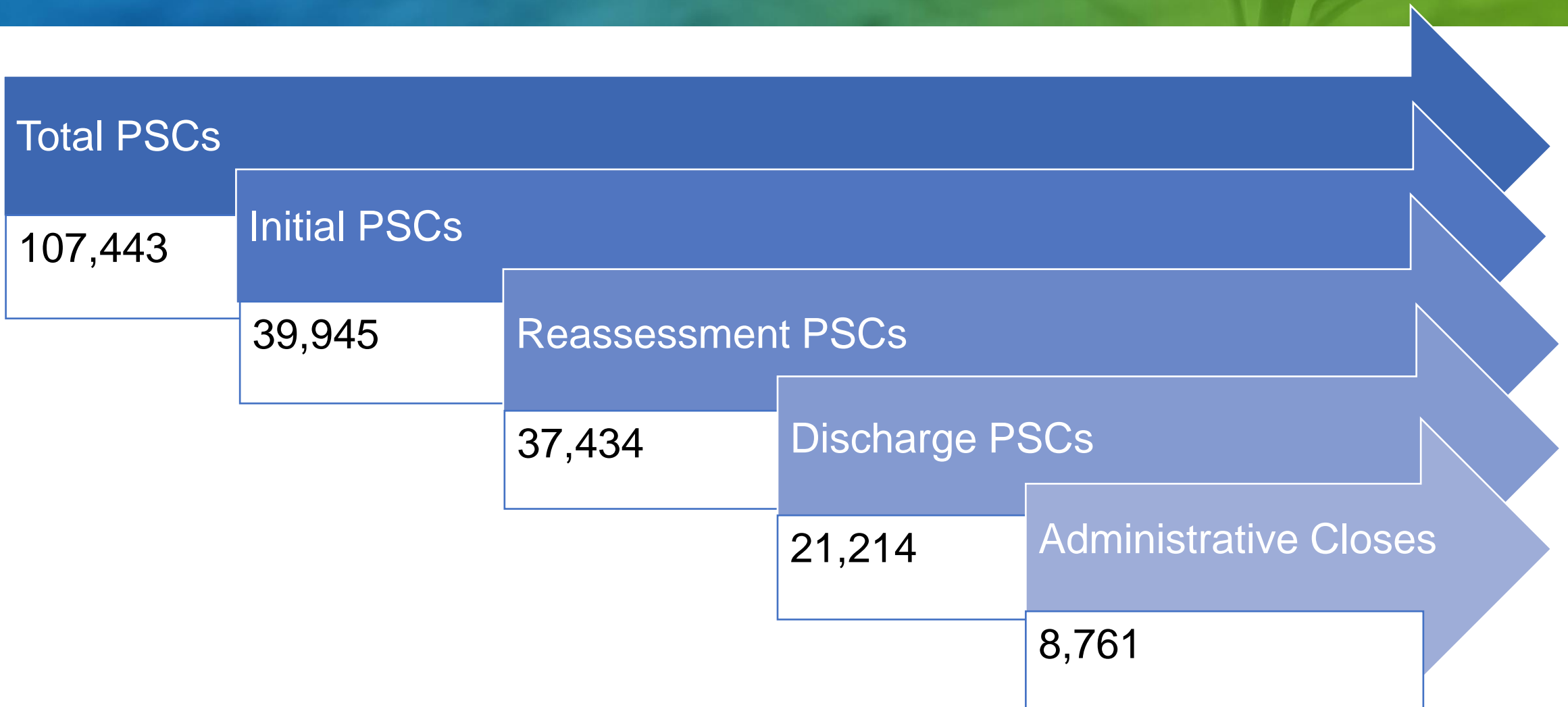
WHAT: PSC-35 aggregate data

Is there a change in score from Initial to Reassessment?



WHEN: FY 2022-2023

▶▶ WHERE did we start?



* There were 89 Urgent PSCs

▶▶ Limitations

Incorrect client ID

- Client ID was incorrectly entered
- Incomplete client ID

Duplicate entries

- Same record entered in EPSDT OMA & via Webservices

Multiple respondents

- PSC completed by more than one respondent

Consistency with respondent

- PSC not completed by same respondent (i.e., Initial completed by mother & Reassessment completed by client)

Missed items

- 1 to 3 items can be missed on the PSC-35

PSC Submissions that had:

- Caregiver declined to respond
- Caregiver did not respond to all required questions

Capture 2 time points

- Timeframe is 4 to 8 months
- Data may have been collected outside the 4 to 8 month window

Client's age

- Differentiation of client's age wasn't included in our analysis

Pediatric Symptom Checklist (PSC-35) Client Level Report

Clinical Cutoff for Total Score

Age 3 to 5 is 24 or above

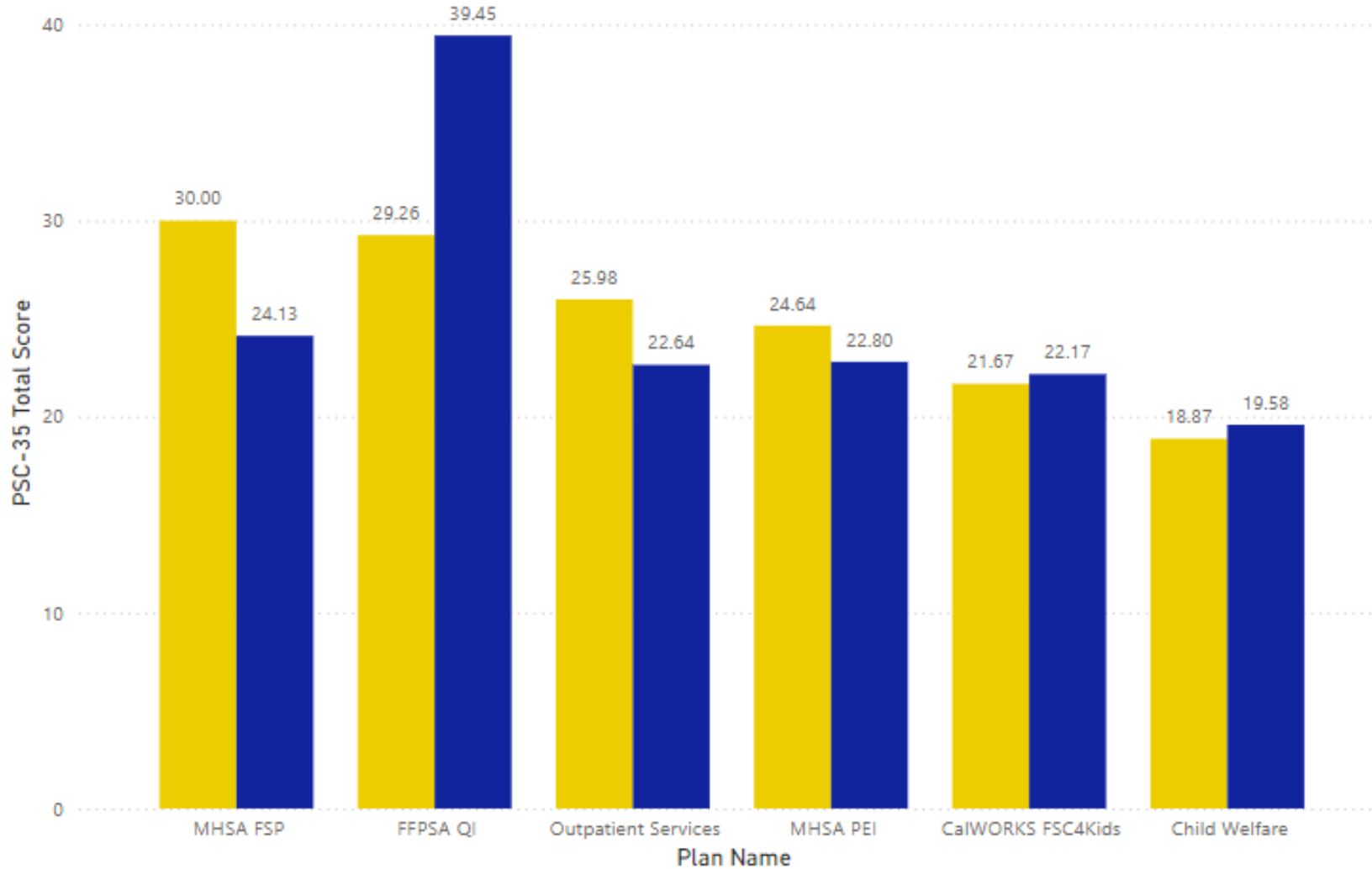
Age 6 to 18 is 28 or above

Clients by Plan & Assessment Type

Plan Rename	# of Unique Clients
CalWORKS FSC4Kids	210
Child Welfare	1267
FFPSA QI	451
MHSA FSP	21
MHSA PEI	664
Outpatient Services	3010
Total	5566

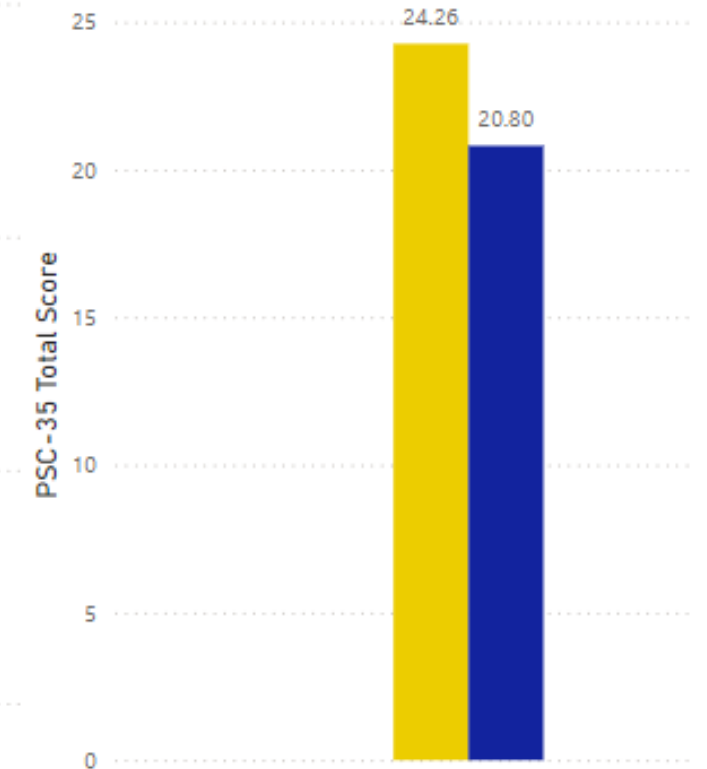
Total Score by Plan Across all Time Points

● Initial ● Reassessment



Overall Total Score Across Time Points for all Plans

● Initial ● Reassessment



▶▶ PSC Subscales

Item No.	Anxiety/Depression subscale items	Item No.	Behavioral/Interpersonal subscale items	Item No.	Attention subscale items
11	Feels sad, unhappy	16	Fights with other children	4	Fidgety, unable to sit still
13	Feels hopeless	29	Does not listen to rules	7	Acts as if driven by a motor
19	Is down on him or herself	31	Does not understand other people's feelings	8	Daydreams too much
22	Worries a lot	32	Teases others	9	Distracted easily
27	Seems to be having less fun	33	Blames others for his or her troubles	14	Has trouble concentrating
		34	Takes things that do not belong to him or her		
		35	Refuses to share		
	Cutoff score		Cutoff score		Cutoff score
	5 or more		7 or more		7 or more

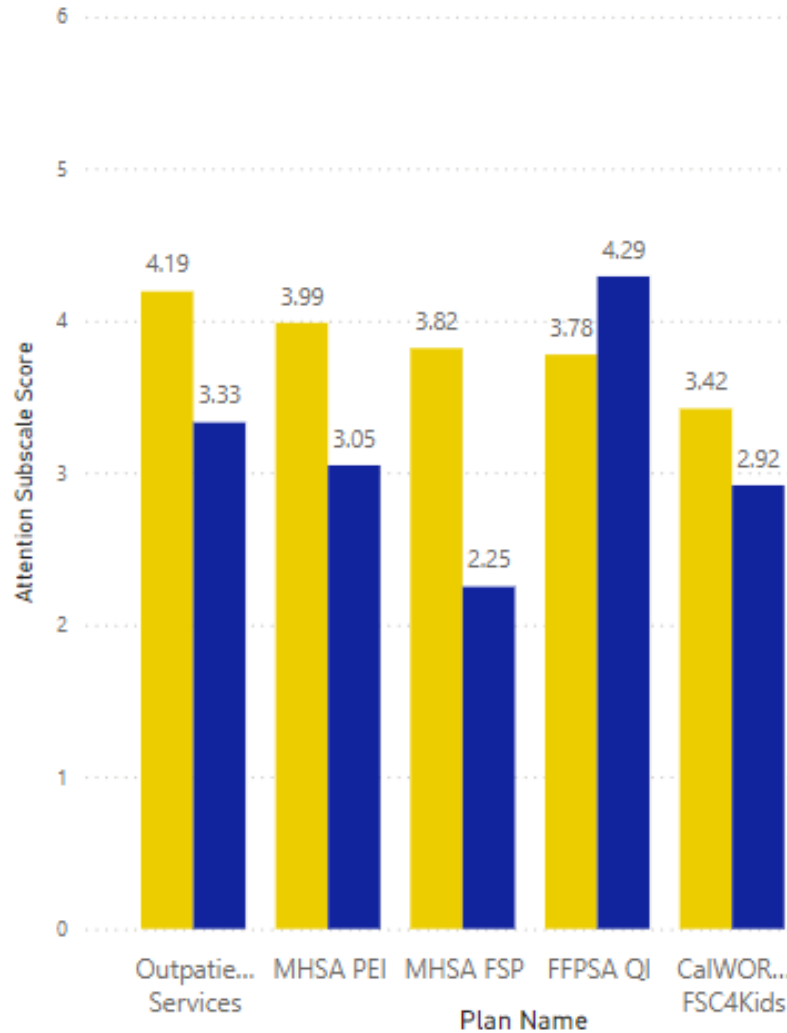
No.	Other Items	No.	Other Items
1	Complains of aches/pains	18	School grades dropping
2	Spends more time alone	20	Visits the doctor w/ doctor finding nothing wrong
3	Tires easily, has little energy	21	Has trouble sleeping
5	Has trouble with teacher	23	Wants to be with you more than before
6	Less interested in school	24	Feels he or she is bad
10	Is afraid of new situations	25	Takes unnecessary risks
12	Is irritable, angry	26	Gets hurt frequently
15	Less interested in friends	28	Acts younger than children his or her age
17	Absent from school	30	Does not show feelings

Cutoff score for Anxiety/Depression Subscale

5 or more

Anxiety/Depression by Plan Across all Time Points

● Initial ● Reassessment

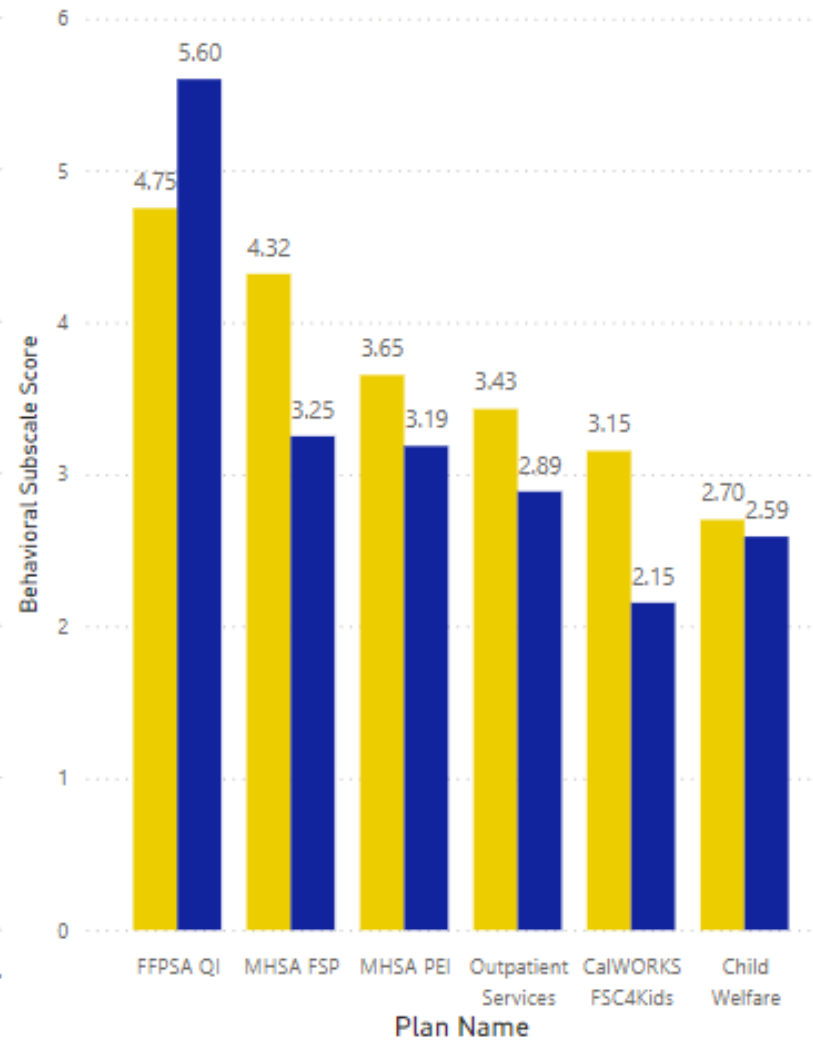


Cutoff score for Behavioral/Interpersonal Subscale

7 or more

Behavioral/Interpersonal by Plan Across all Time Points

● Initial ● Reassessment

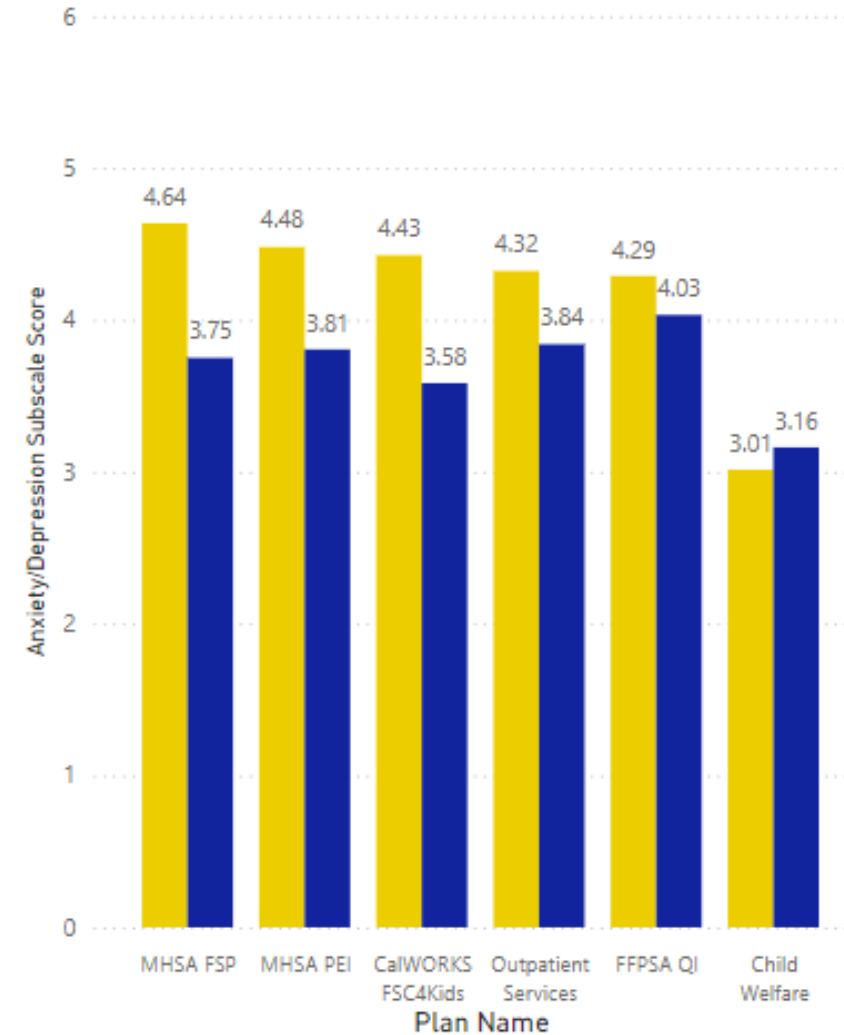


Cutoff score for Attention Subscale

7 or more

Attention by Plan Across all Time Points

● Initial ● Reassessment





Share **your** thoughts



Does the data make sense?



Why do certain programs have a small n ?



What else would you like to see with the data?



THE

TAKE-HOME MESSAGE

In order to properly analyze the data we collect, it's important to make sure that:



Providers are compliant with the requirements of data submission



Providers are submitting valid data



Providers are successful in engaging clients in treatment to ensure all data points are collected

Available Resources for Providers



LOS ANGELES COUNTY
DEPARTMENT OF
MENTAL HEALTH
hope. recovery. wellbeing.

▶▶ Available Resources for Providers

- CANS-IP and PSC FAQ
- CANS and PSC Quick Guides
- CANS Recertification Tip Sheet
- CANS Needs and Strengths Flowchart
- Clinical Forms Bulletin 19-03 and 19-04
- QA Bulletins 19-02 and 19-03

➤ All can be accessed at:

[Resources - Department of Mental Health \(lacounty.gov\)](#)

- PSC Scoring Sheet

➤ Accessed at: [Forms and Measures - Department of Mental Health \(lacounty.gov\)](#)

▶▶ Available Support for Providers

- Contact DMH PEI Outcome Inbox at peioutcomes@dmh.lacounty.gov for:
 - Questions or information about CANS/PSC
 - Technical Support (CANS certification, accessing EPSDT OMA App)
 - Consultation (CANS/PSC error corrections)
 - Requesting summary report of CANS/PSC data
- Contact Praed Coaching Support at coaching@TCOMTraining.com for assistance in passing CANS certification exam
- Contact Praed Support Help at support@TCOMTraining.com to update your profile information (i.e., work location) or technical issues

QUESTIONS?



LOS ANGELES COUNTY
DEPARTMENT OF
MENTAL HEALTH
hope. recovery. wellbeing.

PEI/EPSDT Virtual Drop-in Learning Lab

Dates of upcoming Learning Labs:

Tuesday May 28, 2024
1:00 – 2:00 PM

Tuesday June 11, 2024
1:00 – 2:00 PM

Tuesday June 25, 2024
1:00 – 2:00 PM

Tuesday July 9, 2024
1:00 – 2:00 PM

Tuesday July 23, 2024
1:00 – 2:00 PM

**LOS ANGELES COUNTY
DEPARTMENT OF
MENTAL HEALTH**
hope. recovery. wellbeing.

**JOIN OUR PEI/OMA - EPSDT
VIRTUAL DROP-IN
LABS!**

BECOME A SUPERHERO LEARNER!

WHAT?

*STARTING JANUARY 9, 2024, THE DMH
OUTCOMES TEAM WILL PROVIDE
ADDITIONAL SUPPORT FOR ALL THE
DIRECTLY OPERATED (DO) AND LEGAL
ENTITY PROVIDERS VIA OUR INTERACTIVE
PEI/OMA - EPSDT VIRTUAL DROP-IN LAB.*

WHERE?

*LEARNING LABS WILL BE HELD THE 2ND AND 4TH
TUESDAY OF EVERY MONTH VIA MS TEAMS,
FROM 1:00PM-2:00PM.*

WHY?

*THESE VIRTUAL DROP-IN SESSIONS PROVIDE A
SPACE TO ASK QUESTIONS ABOUT THE
APPLICATIONS OR FORMS (PEI OMA OR EPSDT
OUTCOME MEASURES), LEARN TIPS ON USING
THE APPLICATIONS, OR ASK QUESTIONS
SPECIFIC TO YOUR PROVIDER SITE.*

HOW?

*EMAIL PEIOUTCOMES@DMH.LACOUNTY.GOV FOR MORE
INFORMATION
OR VISIT
[HTTPS://DMH.LACOUNTY.GOV/OUTCOMES/TRAINING/](https://DMH.LACOUNTY.GOV/OUTCOMES/TRAINING/)
(WHERE MS TEAMS LINKS WILL BE POSTED)*

POW!

BAM!

ZAP!

AMAZING!

Thank you!



LOS ANGELES COUNTY
DEPARTMENT OF
MENTAL HEALTH
hope. recovery. wellbeing.