

## ▶▶ DMH Housing Resources – Current Landscape

- Interim Housing
- Enriched Residential Care Program
- Capital Investments in Permanent Supportive Housing (PSH)
- Federal subsidies through the City of Los Angeles and County of Los Angeles Housing Authorities
- Housing Assistance Program (security deposits, household goods, utilities, eviction prevention and short and long term rental assistance)
- Local housing subsidies known as the Flexible Housing Subsidy Pool, including the Housing for Mental Health Program (for FSPs)

## ▶▶ DMH Interim Housing Resources

- **What do we have:**
  - Interim Housing – Adults and Families
    - 23 sites that serve a total of 646 single adults
    - 5 sites that serve a total of 63 families and their minor children
    - In August 2022, added 2 sites totaling 45 beds that serve individuals referred from the jail (Care First Community Investment funds)
    - In July 2023, added another 2 sites totaling 55 beds that serve individuals referred from the jail (MHSA funds)
    - In August 2023, added 1 site with 56 beds in Hollywood (MHSA Innovation)
  - Enhanced Emergency Shelter Program - Transition Age Youth
    - 8 sites with 110 beds

## ▶▶ DMH Interim Housing Resources

- **Where we are going:**

- New State funding through the **Behavioral Health Bridge Housing (BHBH) Program**
  - Augmenting current non-congregate interim housing sites
  - Estimated to increase interim housing resources by approximately 1,000 beds
  - Housing Navigation Services in all BHBH housing
- Abt study - “Understanding Interim Housing Costs across Los Angeles County”
  - Reassess interim housing bed rates across interim housing system

# ▶▶ Enriched Residential Care Program

- **What do we have:**

- MHSA and SAMHSA funds for rent subsidies and enhanced rates
  - Currently serves approximately 1,000 individuals
  - Currently at capacity with existing funding

- **Where we are going:**

- Fiscal Year 2023-24 added \$5 million of MHSA funds to allow for continued growth
  - Estimated to serve an additional 200 clients
- State Community Care Expansion (CCE) Preservation funding - Fall 2023
  - \$42 million for Operating Subsidy Payments to be used over 5 years
    - DMH will be able to serve an additional 500 clients daily at \$1,000/month
  - \$55.5 million of CCE and \$11.2 million of Mental Health Services Act funds for Capital Projects funding for preservation of existing licensed residential care facilities
    - Administered by Los Angeles County Development Authority

# ▶▶ MHSA-Funded Capital Investments in PSH

## ALLOCATION OF MHSA FUNDING 2008 - Present

Allocation	Capital Development	Use of Funds	Underwriter
\$744 Million	No Place Like Home	Capital Development	Los Angeles County Development Authority (LACDA)
\$103 Million	Mental Health Housing Program	Capital Development NOFA 23 A	
		Capital Development NOFA 24 A	
		Capital Development/ Veterans Only	
		Capital Development/ Alternative Housing Model	
\$155 Million	Special Needs Housing Program	Capital Development	California Housing Finance Agency (CalHFA)
	MHSA Housing Program	Capital Development And Operating Subsidy	
<b>\$1.003 Billion</b>	<b>= TOTAL ALLOCATION</b>		

## ▶▶ MHSA-Funded Developments by Service Area

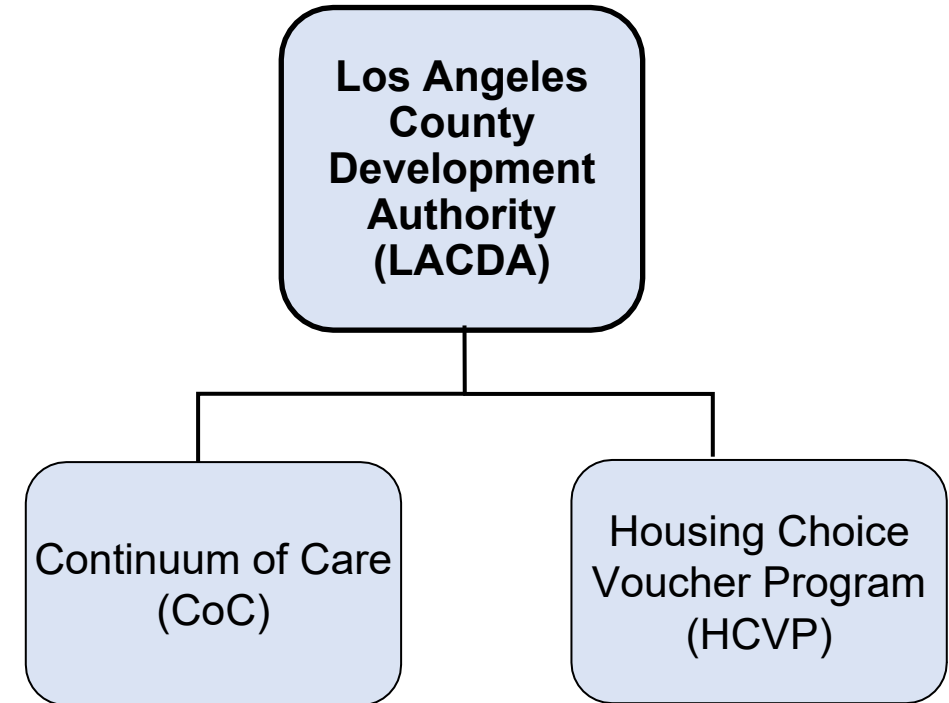
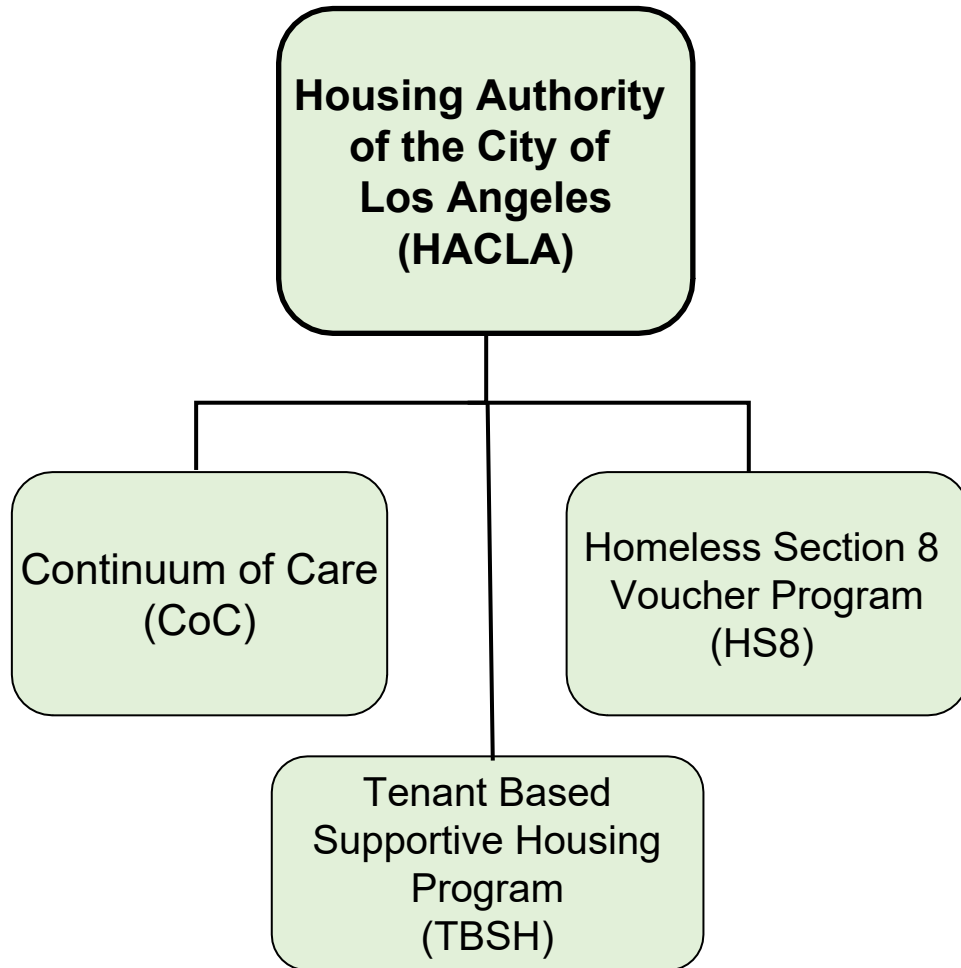
Service Area	FUNDED		OCCUPIED	
	Number of Developments	Number of Units	Number of Developments	Number of Units
1	7	170	3	76
2	21	492	16	352
3	5	130	3	71
4	48	1,618	25	587
5	11	215	7	112
6	33	760	22	488
7	12	233	8	154
8	15	382	10	212
<b>TOTAL</b>	<b>152</b>	<b>4,000</b>	<b>94</b>	<b>2,052</b>

## ▶▶ DMH Capital Investments

- **Where we are going:**
  - No Place Like Home (NPLH)
    - \$150 million uncommitted
    - Los Angeles County Development Authority will release Notice of Funding Availability in the Winter
    - Funds must be committed by June 30, 2024
    - \$100 million committed for Restorative Care Villages on the hospital campuses
      - Century Housing developer for LAC-USC
      - 300 apartment units, 150 NPLH and 150 affordable
  - **AB 531: “Build” – Housing Funding via General Obligation Bond**
    - Statewide \$4.7 billion on the March 2024 ballot

# 17 Contracts with the Housing Authorities ▶ 2,500+ Subsidies

for





## ▶▶ Housing Assistance Program

- Funding through PATH, MHSA and County General Fund
  - Household Goods (Furniture, Housewares, Linens and Appliances)
  - Security Deposits
  - Eviction Prevention
  - Utility Deposits
  - Short-Term Rental Assistance (e.g. shared housing, sober living homes)
  - Long-Term Rental Assistance through the Flexible Housing Subsidy Pool for individuals that are not eligible for a Federal Subsidy
- **What is new:** In FY 2022-23, PATH funds increased from \$192,960 to \$429,451
- **What is the gap?** Long-term rental assistance funding has been maxed out for over 2 years. Referrals continue to be received but are unable to be approved. Result is that individuals remain in interim housing or on the streets that need housing and are not eligible for other permanent housing resources (e.g., individuals without documentation and with excluded criminal histories).

## ▶▶ Housing For Mental Health

- Recommendation for Housing For Mental Health came from housing workgroup during the Full Service Partnership (FSP) re-design process
- Goal was to have flexible funding for rental subsidies that were outside of the Coordinated Entry System and for individuals that do not meet Federal Subsidy requirements
- \$10 million for rental subsidies
  - \$8 million – referrals from 16 designated FSP Programs
  - \$2 million – referrals from ODR for joint DMH clients
  - Serves approximately 410 clients

## ▶▶ Office of Diversion and Reentry

- \$25 million of MHSA funds
- Projected to start in October 2023
- Estimated to serve 500 ODR/DMH joint clients
- Funds will be used for:
  - Intensive Case Management Services
  - Interim Housing
  - Enriched Residential Care
  - Permanent Supportive Housing rental subsidies
  - Administrative Costs including staff

# Housing Supportive Services Program – ▶▶ Mental Health Services Provided in PSH

- **Current Status:**

- HSSP services offered in 176 PSH sites across the County

- **How many Permanent Supportive Housing units are in the Los Angeles Homeless Services Authority pipeline (includes MHSA-funded units)**

<b>FY</b>	<b>Total Units</b>	<b>PSH Units</b>
<b>FY 23-24</b>	<b>6403</b>	<b>4316</b>
<b>FY 24-25</b>	<b>4141</b>	<b>3021</b>
<b>FY 25-26</b>	<b>2495</b>	<b>1657</b>
<b>FY 26-27</b>	<b>798</b>	<b>440</b>
<b>FY 27-28</b>	<b>108</b>	<b>76</b>
<b>TBD</b>	<b>1284</b>	<b>1009</b>
<b>Grand Total</b>	<b>15229</b>	<b>10519</b>

QUESTIONS?



LOS ANGELES COUNTY  
DEPARTMENT OF  
MENTAL HEALTH  
hope. recovery. wellbeing.