

Los Angeles County | Department of Mental Health | Chief Information Office Bureau

## Early and Periodic Screening, Diagnostic and Treatment Service COMPANION GUIDE



LOS ANGELES COUNTY  
**DEPARTMENT OF  
MENTAL HEALTH**  
hope. recovery. wellbeing.

Version 202101 | Date: 02/24/2022

2022 © Los Angeles County | Department of Mental Health | CIOB | All rights reserved

### **Disclosure Statement**

This document represents the Los Angeles County Department of Mental Health (LACDMH) implementation instructions for Early and Periodic Screening, Diagnostic and Treatment (EPSDT). This document specifies the required operation workflows, data elements along with associated restrictions to capture data required by LACDMH. LACDMH reserves the right to modify and change the document at any time. LACDMH will disseminate the information in a timely manner, should there be any change to this document.

**Revision and Sign-off Sheet**

Version History

Date	Author	Version	Change Reference
06/28/2019	LACDMH Integration Team	Version 201901	Initial Release
08/08/2019	LACDMH Integration Team	Version 201901	Update Appendix
02/24/2022	LACDMH Integration Team	Version 202101	Initial Release

Reviewers

Name	Version Approved	Position	Date
Juan Fermin	Version 202101	IT Manager	02/24/2022

Distribution

Name	Position
Trading Partners and their IT vendors	N/A

Document Properties

Item	Details
Document Title	Companion Guide – Early and Periodic Screening, Diagnostic and Treatment Version 202101
Author	LAC DMH Integration Team
Creation Date	January 06, 2021
Last Updated	February 24, 2022

## Contents

A. INTRODUCTION.....	7
A.1 Background.....	7
A.2 Purpose.....	7
A.3 Overview.....	8
A.4 Process Workflow Diagram .....	9
A.5 Security.....	10
B. Child and Adolescent Needs and Strengths (CANS) USE CASE & SERVICE OPERATIONS .....	11
B.1 Search CANS.....	11
B.1.1 SEARCHCANS_INPUT .....	11
B.1.2 SEARCHCANS_OUTPUT .....	11
B.1.3 XML STRUCTURE OF SEARCHCANS_INPUT .....	12
B.1.4 XML STRUCTURE OF SEARCHCANS_OUTPUT .....	12
B.2 Add CANS .....	13
B.2.1 ADDCANS_INPUT.....	13
B.2.2 ADDCANS_OUTPUT .....	20
B.2.3 XML STRUCTURE OF ADDCANS_INPUT.....	20
B.2.4 XML STRUCTURE OF ADDCANS_OUTPUT.....	24
B.3 Get CANS.....	25
B.3.1 GETCANS_INPUT.....	25
B.3.2 GETCANS_OUTPUT .....	25
B.3.3 XML STRUCTURE OF GETCANS_INPUT .....	28
B.3.4 XML STRUCTURE OF GETCANS_OUTPUT .....	28
B.4 Update CANS.....	31
B.4.1 UPDATECANS_INPUT.....	31
B.4.2 UPDATECANS_OUTPUT .....	38
B.4.3 XML STRUCTURE OF UPDATECANS_INPUT.....	38
B.4.4 XML STRUCTURE OF UPDATECANS_OUTPUT.....	42
B.5 Delete CANS.....	43
B.5.1 DELETECANS_INPUT .....	43
B.5.2 DELETECANS_OUTPUT.....	43

B.5.3 XML STRUCTURE OF DELETECANS\_INPUT ..... 44

B.5.4 XML STRUCTURE OF DELETECANS\_OUTPUT ..... 44

C. Pediatric Symptom Checklist (PSC) USE CASE & SERVICE OPERATIONS ..... 45

C.1 Search PSC..... 45

    C.1.1 SEARCHPSC\_INPUT ..... 45

    C.1.2 SEARCHPSC\_OUTPUT ..... 45

    C.1.3 XML STRUCTURE OF SEARCHPSC\_INPUT ..... 46

    C.1.4 XML STRUCTURE OF SEARCHPSC\_OUTPUT ..... 46

C.2 Add PSC..... 47

    C.2.1 ADDPSC\_INPUT ..... 47

    C.2.2 ADDPSC\_OUTPUT ..... 51

    C.2.3 XML STRUCTURE OF ADDPSC\_INPUT ..... 51

    C.2.4 XML STRUCTURE OF ADDCPSC\_OUTPUT ..... 54

C.3 Get PSC..... 55

    C.3.1 GETPSC\_INPUT..... 55

    C.3.2 GETPSC\_OUTPUT..... 56

    C.3.3 XML STRUCTURE OF GETPSC\_INPUT ..... 57

    C.3.4 XML STRUCTURE OF GETPSC\_OUTPUT ..... 58

C.4 Update PSC ..... 60

    C.4.1 UPDATEPSC\_INPUT..... 60

    C.4.2 UPDATEPSC\_OUTPUT..... 64

    C.4.3 XML STRUCTURE OF UPDATEPSC\_INPUT..... 65

    C.4.4 XML STRUCTURE OF UPDATEPSC\_OUTPUT ..... 66

C.5 Delete PSC..... 68

    C.5.1 DELETEPSC\_INPUT ..... 68

    C.5.2 DELETEPSC\_OUTPUT..... 68

    C.5.3 XML STRUCTURE OF DELETEPSC\_INPUT..... 69

    C.5.4 XML STRUCTURE OF DELETEPSC\_OUTPUT..... 69

D. Error Handling ..... 70

E. Acceptable Values Only..... 74

E.1. ENUMERATIONS ..... 74

E.1.1 CAREGIVERDECLINEDTORESPOND ..... 74

E.1.2 CAREGIVERDIDNOTRESPONDTOALLQUESTIONS ..... 74

E.1.3 POTENTIALLYTRAUMATICADVERSECHILDHOODEXP ..... 74

F. Dictionary Service .....74

G. Client Service.....75

Appendix .....76

    WSDL LOCATIONS ..... 76

    XML STRUCTURE OF UNSUCCESSFUL RESPONSE: ..... 76

    SUMMARY OF CHANGES IN VERSION 202101 ..... 78

## A. INTRODUCTION

### A.1 Background

Per Department of Health Care Services (DHCS) Information Notice 17-052, DHCS has selected the CANS-50 and PSC-35 tools to measure child and youth functioning as required under Welfare and Institutions Code Section 14707.5. While DHCS is requiring the use of the CANS-50, LACDMH has elected to require the use of the CANS-IP to best support LA County Department of Child and Family Services partners who are required by the California Department of Social Services (CDSS) to utilize the CANS-IP.

The CANS-IP is a structured evaluation tool used for identifying youth and family needs amenable to intervention and strengths that can be capitalized upon. It provides a framework for developing and communicating a shared vision for addressing the needs. It utilizes youth and family information to inform planning, support decision making and monitor outcomes.

The PSC-35 is a brief questionnaire completed by a caregiver and scored by a practitioner that helps identify and assess changes in emotional and behavioral problems in children. It covers a broad range of psychosocial problems and assists practitioners to understand the types and severity of problems reported by caregivers. It is designed to assist in earlier detection and treatment of psychosocial problems leading to better outcomes for Children.

For all newly active clients between the ages of 6 and 21, the CANS-IP must be completed at initial assessment, every 6 months throughout treatment, and at the end of treatment. For all newly active clients between the ages of 3 and 19, the PSC-35 must be completed at initial assessment, every 6 months throughout treatment, and at the end of treatment.

Los Angeles County Department of Mental Health (LACDMH) requires Contracted Behavioral Health Providers comply with the aforementioned mandate by either submitting or entering assessment information to the DMH provided EPSDT service (API) or ESPDT Application respectively. For more information on required reporting intervals and details, please reference QA bulletin No. 19-02.

### A.2 Purpose

The EPSDT Companion Guide is intended for LACDMH Trading Partners (TP) as a guide when interfacing and trading data electronically from their respective EHR/EMR systems to LACDMH. This document is designed to provide a logical view of the required, conditionally required, and optional data in order to exchange information with LACDMH. In addition, Use Cases, Workflows, Operation details, attribute descriptions, restrictions, and acceptable values are all outlined in this document. This guide also describes service operation details in terms of requests and responses.

## A.3 Overview

This guide assumes the reader has a working understanding of the following technology stack including but not limited to the open protocols and standards of SOAP, WSDL, XSD, and XML as they relate to data exchange between applications or systems. In addition, it is imperative that the reader has a working knowledge of user authentication using X.509 certificates, Public Key Infrastructure (PKI) exchange, and Certificate Authority technologies. The LACDMH EPSDT Service supports the following operations to facilitate data exchange between Contract Providers and DMH:

- Search CANS
- Add CANS
- Get CANS
- Update CANS
- Delete CANS
- Search PSC
- Add PSC
- Get PSC
- Update PSC
- Delete PSC

This guide describes service operation requests and responses. The Request action indicates what LACDMH will be expecting as “Input”. The Response action indicates what DMH will be returning as “Output”.

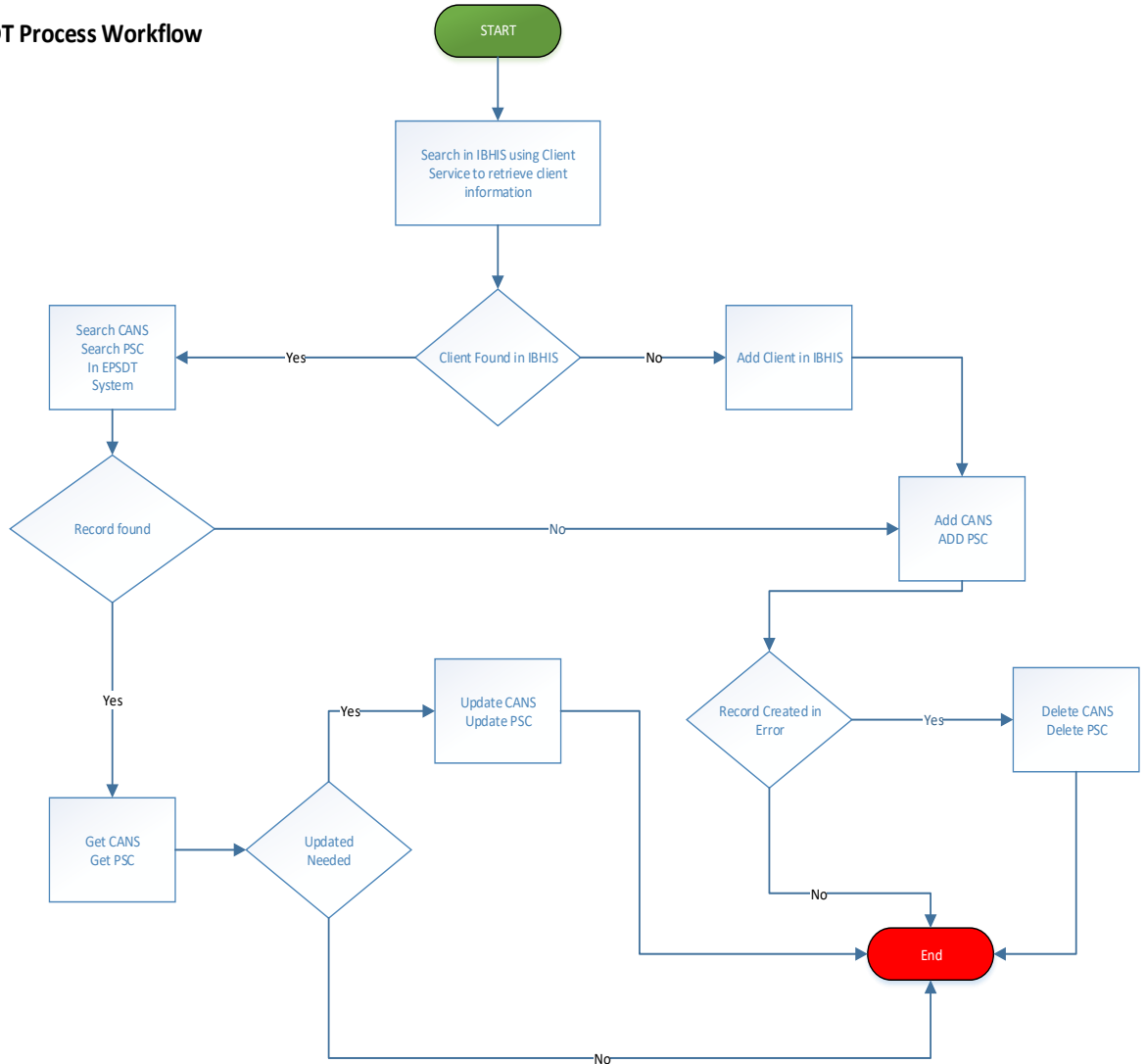


## A.4 Process Workflow Diagram

The following workflow details Service processing. The diagram demonstrates all possible interactions (except error handling) that a Trading Partner is likely to engage while trading electronically with DMH.

### LAC DMH EPSDT Process Workflow

Last revised: 04/26/2019



## A.5 Security

The EPSDT Service uses X.509 Digital Certificates and a Managed Public Key Infrastructure (MPKI) to authenticate and authorize TPs. To access the services successfully, callers must provide a Program Identifier—ProgramID (previously referred to as the Legal Entity Number) along with their LACDMH assigned Digital Certificate. In the Message Context Input of the request, “ProgramID” is required. Please note that certificate authentication is verified via transport. To illustrate placement of the Program Identifier, a sample SOAP message is provided below using the GetCANS operation’s input schema:

```
<soapenv:Envelope xmlns:soapenv="http://schemas.xmlsoap.org/soap/envelope/"
xmlns:ns="http://b2b.dmh.lacounty.gov/EPSDT/202101"
xmlns:mes="http://b2b.dmh.lacounty.gov/EPSDT/202101/MessageContextInput"
xmlns:typ="http://b2b.dmh.lacounty.gov/EPSDT/202101/types">
  <soapenv:Header/>
  <soapenv:Body>
    <ns:GetCANS_Input>
      <mes:MessageContextInput typ:ProgramID="12345"/>
      <typ:EPSDT typ:SubmissionID="1234567"/>
    </ns:GetCANS_Input>
  </soapenv:Body>
</soapenv:Envelope>
```

When an invalid certificate is provided, the service will return a 403 Forbidden error. When the ProgramID provided is blank or invalid, the service will also deny access to resources and return an error.

## B. Child and Adolescent Needs and Strengths (CANS) USE CASE & SERVICE OPERATIONS

The following sections describe the various entity domains and related CANS Service operations in detail. Each sub-section describes use case, pre-condition(s), service operation with data attributes and any notes to follow.

### B.1 Search CANS

**Definition:**

The Search CANS operation allows Trading Partners to look up existing active EPSDT CANS record(s) for existing clients based on certain search criteria.

**Use Case:**

# 1: Search for existing record(s) using client’s IBHIS ID (ClientID).

**Service Action:**

SearchCANS operation is available to satisfy search use cases. EPSDT Api will perform the search action. Searches can be performed using the following options:

- Search by ClientID.

**Precondition:**

TP is authenticated and can provide an EPSDT service compliant input.

**Note:**

#1: It is recommended that Trading Partners should use this operation prior to creating a new EPSDT record.

#2: ClientID means IBHIS Client ID.

#### B.1.1 SEARCHCANS\_INPUT

\* R = Required; CR = ConditionallyRequired; O = Optional

Ref #	Data Element	R CR O	Data Type	Min Len	Max Len	Restriction	Acceptable Values
1	ProgramID	R	String	5	5	n/a	ProgramID configured in BizTalk associated with the Digital Certificate used for authentication.
2	ClientID	R	String	1	9	n/a	numbers only

#### B.1.2 SEARCHCANS\_OUTPUT

Ref #	Data Element	Data Type	Required	MinL	MaxL
1	Acknowledgement	String	Yes	100	500
2	SubmissionID	String	Yes	1	32
3	AssessmentDate	String	Yes	10	10
4	AssessmentType	String	Yes	1	1
<b>Fault Schema</b>					
5	Error Code	String	Yes	4	10
6	Error Description	String	Yes	100	100

### B.1.3 XML STRUCTURE OF SEARCHCANS\_INPUT

```
<soapenv:Envelope xmlns:soapenv="http://schemas.xmlsoap.org/soap/envelope/"
xmlns:ns="http://b2b.dmh.lacounty.gov/EPSDT/202101"
xmlns:mes="http://b2b.dmh.lacounty.gov/EPSDT/202101/MessageContextInput"
xmlns:typ="http://b2b.dmh.lacounty.gov/EPSDT/202101/types">
  <soapenv:Header/>
  <soapenv:Body>
    <ns:SearchCANS_Input>
      <mes:MessageContextInput typ:ProgramID="?" />
      <typ:SearchClient ClientID="?" />
    </ns:SearchCANS_Input>
  </soapenv:Body>
</soapenv:Envelope>
```

### B.1.4 XML STRUCTURE OF SEARCHCANS\_OUTPUT

SUCCESSFUL:

```
<s:Envelope xmlns:s="http://schemas.xmlsoap.org/soap/envelope/">
  <s:Body>
    <ns0:SearchCANS_Output xmlns:ns0="http://b2b.dmh.lacounty.gov/EPSDT/202101"
xmlns:mc="http://b2b.dmh.lacounty.gov/EPSDT/202101/MessageContextOutput"
xmlns:t="http://b2b.dmh.lacounty.gov/EPSDT/202101/types">
      <mc:MessageContextOutput Acknowledgement="Completed successfully." />
      <t:SearchEPSDTResults>
        <ClientEPSDT SubmissionID="" AssessmentDate="" AssessmentType="" />
      </t:SearchEPSDTResults>
    </ns0:SearchCANS_Output>
  </s:Body>
</s:Envelope>
```

UNSUCCESSFUL:

See [Appendix](#)

## B.2 Add CANS

**Definition:**

The Add CANS operation allows Trading Partners to add new EPSDT – CANS record linked to their own Provider Number associated with their own Program ID for potential (new) or existing IBHIS client.

**Use Cases:**

- # 1: Add a EPSDT CANS record for an existing IBHIS client.
- # 2: Trading Partners can create a CANS record only for their own provider number associated to their Program ID.

**Service Action:**

The *AddCANS* operation is available to create a new CANS record identified by a unique ID called SubmissionID for an existing IBHIS client. The EPSDT API will create a new record.

**Precondition:**

- TP is authenticated and can provide an EPSDT service compliant input.
- TP has performed search through SearchCANS operation and search result showed that the client does not have existing service request for the intended data. For more information on search—visit section [B.1.](#)
- TP has performed search (and admit as necessary) through Client Service application to ensure the client exists in IBHIS. For more information regarding *Client Service* see section [G. Client Service.](#)

**Note:**

Duplicate Prevention Criteria:

When a Trading Partner submits an AddCANS operation to create a new CANS record for a client that has

- same ProviderNumber and
- same Assessment Type and
- same Assessment Date

as another existing active CANS record---then the service will return an error for that submission and record will not be created.

### B.2.1 ADDCANS\_INPUT

\* R = **Required**; CR = **ConditionallyRequired**; O = **Optional**

Ref #	Data Element	R CR O	Data Type	Min Len	Max Len	Restriction	Acceptable Values
1	ProgramID	R	String	5	5	n/a	ProgramID associated with the Digital Certificate issued by LACDMH.
<b>AdministrativeData</b>							
<b>Assessment</b>							
2	Date	R	Date	10	10	-Masking enforced: YYYY-MM-DD	Numbers & dash (-) only.

Ref #	Data Element	R CR O	Data Type	Min Len	Max Len	Restriction	Acceptable Values
						-Cannot be early than 2018-07-01 -Cannot be future date	
3	Type	R	Enumeration	n/a	n/a	Acceptable Values Only	Use dictionary service. Assessment Section F
4	AdminCloseReason	CR	Enumeration	n/a	n/a	Required when Type = "5"  Restricted to a list of approved codes.	Use dictionary service. Assessment Section F Note: Code 1, 3 or 4 accepted when Type = "5"
<b>Client</b>							
5	ID	R	String	1	9	n/a	Numbers only
6	ProviderNumber	R	Enumeration	4	4	Must be associated with the Program ID. Restricted to a list of approved codes.	Use dictionary service. ProviderNumber Section F
<b>Note: Following data attributes (Ref # 7 thru Ref # 114) should not be submitted when [Type]="5"</b>							
7	HasCaregiver	CR	Enumeration	n/a	n/a	Acceptable Values Only	Use dictionary service. HasCaregiver Section F
8	AssessingPractitionerNPI	CR	String	10	10	n/a	Numbers only
9	ContributorName1	CR	String	1	80	n/a	Alpha and following special characters allowed: hyphen (-), apostrophe (') and space ( )
10	ContributorRelationship1	CR	Enumeration	n/a	n/a	Acceptable Values Only	Use dictionary service. ContributorRelationship Section F
11	ContributorName2	O	String	0	80	n/a	Alpha and following special characters allowed: hyphen (-), apostrophe (') and space ( )

Ref #	Data Element	R CR O	Data Type	Min Len	Max Len	Restriction	Acceptable Values
12	ContributorRelationship2	O	Enumeration	n/a	n/a	Acceptable Values Only	Use dictionary service. ContributorRelationship Section F
13	ContributorName3	O	String	0	80	n/a	Alpha and following special characters allowed: hyphen (-), apostrophe (') and space ( )
14	ContributorRelationship3	O	Enumeration	n/a	n/a	Acceptable Values Only	Use dictionary service. ContributorRelationship Section F
<b>ChildBehavioralEmotionalNeeds</b>							
15	Psychosis	CR	Enumeration	n/a	n/a	Acceptable Values Only	Use dictionary service. CANSQA Section F
16	ImpulsivityHyperactivity	CR	Enumeration	n/a	n/a	Acceptable Values Only	Use dictionary service. CANSQA Section F
17	Depression	CR	Enumeration	n/a	n/a	Acceptable Values Only	Use dictionary service. CANSQA Section F
18	Anxiety	CR	Enumeration	n/a	n/a	Acceptable Values Only	Use dictionary service. CANSQA Section F
19	Oppositional	CR	Enumeration	n/a	n/a	Acceptable Values Only	Use dictionary service. CANSQA Section F
20	Conduct	CR	Enumeration	n/a	n/a	Acceptable Values Only	Use dictionary service. CANSQA Section F
21	AngerControl	CR	Enumeration	n/a	n/a	Acceptable Values Only	Use dictionary service. CANSQA Section F
22	SubstanceUse	CR	Enumeration	n/a	n/a	Acceptable Values Only	Use dictionary service. CANSQA Section F
23	AdjustmentToTrauma	CR	Enumeration	n/a	n/a	Acceptable Values Only	Use dictionary service. CANSQA Section F
<b>LifeDomainFunctioning</b>							
24	FamilyFunctioning	CR	Enumeration	n/a	n/a	Acceptable Values Only	Use dictionary service. CANSQA Section F
25	LivingSituation	CR	Enumeration	n/a	n/a	Acceptable Values Only	Use dictionary service. CANSQA Section F
26	SocialFunctioning	CR	Enumeration	n/a	n/a	Acceptable Values Only	Use dictionary service. CANSQA Section F
27	DevelopmentalIntellectual	CR	Enumeration	n/a	n/a	Acceptable Values Only	Use dictionary service. CANSQA Section F
28	DecisionMaking	CR	Enumeration	n/a	n/a	Acceptable Values Only	Use dictionary service. CANSQA Section F
29	SchoolBehavior	CR	Enumeration	n/a	n/a	Acceptable Values Only	Use dictionary service. CANSQA Section F
30	SchoolAchievement	CR	Enumeration	n/a	n/a	Acceptable Values Only	Use dictionary service. CANSQA Section F
31	SchoolAttendance	CR	Enumeration	n/a	n/a	Acceptable Values Only	Use dictionary service. CANSQA Section F

Ref #	Data Element	R CR O	Data Type	Min Len	Max Len	Restriction	Acceptable Values
32	MedicalPhysical	CR	Enumeration	n/a	n/a	Acceptable Values Only	Use dictionary service. CANSQA Section F
33	SexualDevelopment	CR	Enumeration	n/a	n/a	Acceptable Values Only	Use dictionary service. CANSQA Section F
34	Sleep	CR	Enumeration	n/a	n/a	Acceptable Values Only	Use dictionary service. CANSQA Section F
<b>RiskBehaviors</b>							
35	SuicideRisk	CR	Enumeration	n/a	n/a	Acceptable Values Only	Use dictionary service. CANSQA Section F
36	NonSuicidalSelfInjuriousBehavior	CR	Enumeration	n/a	n/a	Acceptable Values Only	Use dictionary service. CANSQA Section F
37	OtherSelfHarm	CR	Enumeration	n/a	n/a	Acceptable Values Only	Use dictionary service. CANSQA Section F
38	DangerToOthers	CR	Enumeration	n/a	n/a	Acceptable Values Only	Use dictionary service. CANSQA Section F
39	SexualAggression	CR	Enumeration	n/a	n/a	Acceptable Values Only	Use dictionary service. CANSQA Section F
40	DelinquentBehavior	CR	Enumeration	n/a	n/a	Acceptable Values Only	Use dictionary service. CANSQA Section F
41	Runaway	CR	Enumeration	n/a	n/a	Acceptable Values Only	Use dictionary service. CANSQA Section F
42	IntentionalMisbehavior	CR	Enumeration	n/a	n/a	Acceptable Values Only	Use dictionary service. CANSQA Section F
<b>StrengthsDomain</b>							
43	FamilyStrengths	CR	Enumeration	n/a	n/a	Acceptable Values Only	Use dictionary service. CANSSDQA Section F
44	Interpersonal	CR	Enumeration	n/a	n/a	Acceptable Values Only	Use dictionary service. CANSSDQA Section F
45	EducationalSetting	CR	Enumeration	n/a	n/a	Acceptable Values Only	Use dictionary service. CANSSDQA Section F
46	TalentsInterests	CR	Enumeration	n/a	n/a	Acceptable Values Only	Use dictionary service. CANSSDQA Section F
47	SpiritualReligious	CR	Enumeration	n/a	n/a	Acceptable Values Only	Use dictionary service. CANSSDQA Section F
48	CulturalIdentity	CR	Enumeration	n/a	n/a	Acceptable Values Only	Use dictionary service. CANSSDQA Section F
49	CommunityLife	CR	Enumeration	n/a	n/a	Acceptable Values Only	Use dictionary service. CANSSDQA Section F
50	NaturalSupports	CR	Enumeration	n/a	n/a	Acceptable Values Only	Use dictionary service. CANSSDQA Section F
51	Resiliency	CR	Enumeration	n/a	n/a	Acceptable Values Only	Use dictionary service. CANSSDQA Section F
<b>CulturalFactors</b>							
52	Language	CR	Enumeration	n/a	n/a	Acceptable Values Only	Use dictionary service. CANSQA Section F
53	TraditionsAndRituals	CR	Enumeration	n/a	n/a	Acceptable Values Only	Use dictionary service. CANSQA Section F



Ref #	Data Element	R CR O	Data Type	Min Len	Max Len	Restriction	Acceptable Values
54	CulturalStress	CR	Enumeration	n/a	n/a	Acceptable Values Only	Use dictionary service. CANSQA Section F
<p><b>Note: The following CaregiverResourcesAndNeeds node(s) presence is based on the input of HasCaregiver data attribute.</b>                      If HasCaregiver is 'Y', then CaregiverResourcesAndNeeds (0) is required and CaregiverResourcesAndNeeds (1, 2 and 3) are optional.                      If HasCaregiver is 'N', then CaregiverResourcesAndNeeds (0,1,2 and 3) are optional.</p>							
<b>CaregiverResourcesAndNeeds (0)</b>							
55	CaregiverName	CR	String	1	80	n/a	Alpha and following special characters allowed: hyphen (-), apostrophe (') and space ( )
56	CaregiverRelationship	CR	Enumeration	n/a	n/a	Acceptable Values Only	Use dictionary service. CaregiverRelationship Section F
57	Supervision	CR	Enumeration	n/a	n/a	Acceptable Values Only	Use dictionary service. CANSCRQA Section F
58	InvolvementWithCare	CR	Enumeration	n/a	n/a	Acceptable Values Only	Use dictionary service. CANSCRQA Section F
59	Knowledge	CR	Enumeration	n/a	n/a	Acceptable Values Only	Use dictionary service. CANSCRQA Section F
60	SocialResources	CR	Enumeration	n/a	n/a	Acceptable Values Only	Use dictionary service. CANSCRQA Section F
61	ResidentialStability	CR	Enumeration	n/a	n/a	Acceptable Values Only	Use dictionary service. CANSCRQA Section F
62	MedicalPhysical	CR	Enumeration	n/a	n/a	Acceptable Values Only	Use dictionary service. CANSCRQA Section F
63	MentalHealth	CR	Enumeration	n/a	n/a	Acceptable Values Only	Use dictionary service. CANSCRQA Section F
64	SubstanceUse	CR	Enumeration	n/a	n/a	Acceptable Values Only	Use dictionary service. CANSCRQA Section F
65	Development	CR	Enumeration	n/a	n/a	Acceptable Values Only	Use dictionary service. CANSCRQA Section F
66	Safety	CR	Enumeration	n/a	n/a	Acceptable Values Only	Use dictionary service. CANSCRQA Section F
<b>CaregiverResourcesAndNeeds (1)</b>							
67	CaregiverName	O	String	0	80	n/a	Alpha and following special characters allowed: hyphen (-), apostrophe (') and space ( )
68	CaregiverRelationship	O	Enumeration	n/a	n/a	Acceptable Values Only	Use dictionary service. CaregiverRelationship Section F
69	Supervision	O	Enumeration	n/a	n/a	Acceptable Values Only	Use dictionary service. CANSCRQA Section F

Ref #	Data Element	R CR O	Data Type	Min Len	Max Len	Restriction	Acceptable Values
70	InvolvementWithCare	O	Enumeration	n/a	n/a	Acceptable Values Only	Use dictionary service. CANSCRQA Section F
71	Knowledge	O	Enumeration	n/a	n/a	Acceptable Values Only	Use dictionary service. CANSCRQA Section F
72	SocialResources	O	Enumeration	n/a	n/a	Acceptable Values Only	Use dictionary service. CANSCRQA Section F
73	ResidentialStability	O	Enumeration	n/a	n/a	Acceptable Values Only	Use dictionary service. CANSCRQA Section F
74	MedicalPhysical	O	Enumeration	n/a	n/a	Acceptable Values Only	Use dictionary service. CANSCRQA Section F
75	MentalHealth	O	Enumeration	n/a	n/a	Acceptable Values Only	Use dictionary service. CANSCRQA Section F
76	SubstanceUse	O	Enumeration	n/a	n/a	Acceptable Values Only	Use dictionary service. CANSCRQA Section F
77	Development	O	Enumeration	n/a	n/a	Acceptable Values Only	Use dictionary service. CANSCRQA Section F
78	Safety	O	Enumeration	n/a	n/a	Acceptable Values Only	Use dictionary service. CANSCRQA Section F
<b>CaregiverResourcesAndNeeds (2)</b>							
79	CaregiverName	O	String	0	80	n/a	Alpha and following special characters allowed: hyphen (-), apostrophe (') and space ( )
80	CaregiverRelationship	O	Enumeration	n/a	n/a	Acceptable Values Only	Use dictionary service. CaregiverRelationship Section F
81	Supervision	O	Enumeration	n/a	n/a	Acceptable Values Only	Use dictionary service. CANSCRQA Section F
82	InvolvementWithCare	O	Enumeration	n/a	n/a	Acceptable Values Only	Use dictionary service. CANSCRQA Section F
83	Knowledge	O	Enumeration	n/a	n/a	Acceptable Values Only	Use dictionary service. CANSCRQA Section F
84	SocialResources	O	Enumeration	n/a	n/a	Acceptable Values Only	Use dictionary service. CANSCRQA Section F
85	ResidentialStability	O	Enumeration	n/a	n/a	Acceptable Values Only	Use dictionary service. CANSCRQA Section F
86	MedicalPhysical	O	Enumeration	n/a	n/a	Acceptable Values Only	Use dictionary service. CANSCRQA Section F
87	MentalHealth	O	Enumeration	n/a	n/a	Acceptable Values Only	Use dictionary service. CANSCRQA Section F
88	SubstanceUse	O	Enumeration	n/a	n/a	Acceptable Values Only	Use dictionary service. CANSCRQA Section F
89	Development	O	Enumeration	n/a	n/a	Acceptable Values Only	Use dictionary service. CANSCRQA Section F
90	Safety	O	Enumeration	n/a	n/a	Acceptable Values Only	Use dictionary service. CANSCRQA Section F
<b>CaregiverResourcesAndNeeds (3)</b>							

Ref #	Data Element	R CR O	Data Type	Min Len	Max Len	Restriction	Acceptable Values
91	CaregiverName	O	String	0	80	n/a	Alpha and following special characters allowed: hyphen (-), apostrophe (') and space ( )
92	CaregiverRelationship	O	Enumeration	n/a	n/a	Acceptable Values Only	Use dictionary service. CaregiverRelationship Section F
93	Supervision	O	Enumeration	n/a	n/a	Acceptable Values Only	Use dictionary service. CANSCRQA Section F
94	InvolvementWithCare	O	Enumeration	n/a	n/a	Acceptable Values Only	Use dictionary service. CANSCRQA Section F
95	Knowledge	O	Enumeration	n/a	n/a	Acceptable Values Only	Use dictionary service. CANSCRQA Section F
96	SocialResources	O	Enumeration	n/a	n/a	Acceptable Values Only	Use dictionary service. CANSCRQA Section F
97	ResidentialStability	O	Enumeration	n/a	n/a	Acceptable Values Only	Use dictionary service. CANSCRQA Section F
98	MedicalPhysical	O	Enumeration	n/a	n/a	Acceptable Values Only	Use dictionary service. CANSCRQA Section F
99	MentalHealth	O	Enumeration	n/a	n/a	Acceptable Values Only	Use dictionary service. CANSCRQA Section F
100	SubstanceUse	O	Enumeration	n/a	n/a	Acceptable Values Only	Use dictionary service. CANSCRQA Section F
101	Development	O	Enumeration	n/a	n/a	Acceptable Values Only	Use dictionary service. CANSCRQA Section F
102	Safety	O	Enumeration	n/a	n/a	Acceptable Values Only	Use dictionary service. CANSCRQA Section F
<b>PotentiallyTraumaticAdverseChildhoodExp</b>							
103	SexualAbuse	CR	Enumeration	n/a	n/a	Acceptable Values Only	E.1.3
104	PhysicalAbuse	CR	Enumeration	n/a	n/a	Acceptable Values Only	E.1.3
105	EmotionalAbuse	CR	Enumeration	n/a	n/a	Acceptable Values Only	E.1.3
106	Neglect	CR	Enumeration	n/a	n/a	Acceptable Values Only	E.1.3
107	MedicalTrauma	CR	Enumeration	n/a	n/a	Acceptable Values Only	E.1.3
108	WitnessToFamilyViolence	CR	Enumeration	n/a	n/a	Acceptable Values Only	E.1.3
109	WitnessToCommunitySchool Violence	CR	Enumeration	n/a	n/a	Acceptable Values Only	E.1.3
110	NaturalOrManmadeDisaster	CR	Enumeration	n/a	n/a	Acceptable Values Only	E.1.3
111	WarTerrorismAffected	CR	Enumeration	n/a	n/a	Acceptable Values Only	E.1.3

Ref #	Data Element	R CR O	Data Type	Min Len	Max Len	Restriction	Acceptable Values
112	VictimWitnessToCriminalActivity	CR	Enumeration	n/a	n/a	Acceptable Values Only	E.1.3
113	DisruptionInCaregivingAttachmnt Losses	CR	Enumeration	n/a	n/a	Acceptable Values Only	E.1.3
114	ParentalCriminalBehaviors	CR	Enumeration	n/a	n/a	Acceptable Values Only	E.1.3

### B.2.2 ADDCANS\_OUTPUT

Ref #	Data Element	Data Type	Required	Min Len	Max Len
<b>Successful</b>					
1	Acknowledgement	String	Yes	100	500
2	SubmissionID	String	Yes	36	36
<b>Unsuccessful</b>					
3	ErrorCode	String	Yes	4	10
4	ErrorDescription	String	Yes	100	500

### B.2.3 XML STRUCTURE OF ADDCANS\_INPUT

```
<soapenv:Envelope xmlns:soapenv="http://schemas.xmlsoap.org/soap/envelope/"
xmlns:ns="http://b2b.dmh.lacounty.gov/EPSDT/202101"
xmlns:mes="http://b2b.dmh.lacounty.gov/EPSDT/202101/MessageContextInput"
xmlns:typ="http://b2b.dmh.lacounty.gov/EPSDT/202101/types">
  <soapenv:Header/>
  <soapenv:Body>
    <ns:AddCANS_Input>
      <mes:MessageContextInput typ:ProgramID="?" />
      <typ:AddCANS>
        <typ:CANSAdministrativeData>
          <Assessment Date="?" Type="?" AdminCloseReason="?" />
          <Client ID="?" ProviderNumber="?" HasCaregiver="?" AssessingPractitionerNPI="?"
ContributorName1="?" ContributorRelationship1="?" ContributorName2="?"
ContributorRelationship2="?" ContributorName3="?" ContributorRelationship3="?" />
        </typ:CANSAdministrativeData>
        <typ:ChildBehavioralEmotionalNeeds>
          <!--Optional:-->
          <Psychosis></Psychosis>
          <!--Optional:-->
          <ImpulsivityHyperactivity></ImpulsivityHyperactivity>
          <!--Optional:-->
          <Depression></Depression>
        </typ:ChildBehavioralEmotionalNeeds>
      </typ:AddCANS>
    </ns:AddCANS_Input>
  </soapenv:Body>
</soapenv:Envelope>
```

```

<!--Optional:-->
<Anxiety></Anxiety>
<!--Optional:-->
<Oppositional></Oppositional>
<!--Optional:-->
<Conduct></Conduct>
<!--Optional:-->
<AngerControl></AngerControl>
<!--Optional:-->
<SubstanceUse></SubstanceUse>
<!--Optional:-->
<AdjustmentToTrauma></AdjustmentToTrauma>
</typ:ChildBehavioralEmotionalNeeds>
<typ:LifeDomainFunctioning>
  <!--Optional:-->
  <FamilyFunctioning></FamilyFunctioning>
  <!--Optional:-->
  <LivingSituation></LivingSituation>
  <!--Optional:-->
  <SocialFunctioning></SocialFunctioning>
  <!--Optional:-->
  <DevelopmentalIntellectual></DevelopmentalIntellectual>
  <!--Optional:-->
  <DecisionMaking></DecisionMaking>
  <!--Optional:-->
  <SchoolBehavior></SchoolBehavior>
  <!--Optional:-->
  <SchoolAchievement></SchoolAchievement>
  <!--Optional:-->
  <SchoolAttendance></SchoolAttendance>
  <!--Optional:-->
  <MedicalPhysical></MedicalPhysical>
  <!--Optional:-->
  <SexualDevelopment></SexualDevelopment>
  <!--Optional:-->
  <Sleep></Sleep>
</typ:LifeDomainFunctioning>
<typ:RiskBehaviors>
  <!--Optional:-->
  <SuicideRisk></SuicideRisk>
  <!--Optional:-->
  <NonSuicidalSelfInjuriousBehavior></NonSuicidalSelfInjuriousBehavior>
  <!--Optional:-->
  <OtherSelfHarm></OtherSelfHarm>
  <!--Optional:-->
  <DangerToOthers></DangerToOthers>
  <!--Optional:-->

```

```

<SexualAggression></SexualAggression>
<!--Optional:-->
<DelinquentBehavior></DelinquentBehavior>
<!--Optional:-->
<Runaway></Runaway>
<!--Optional:-->
<IntentionalMisbehavior></IntentionalMisbehavior>
</typ:RiskBehaviors>
<typ:StrengthsDomain>
  <!--Optional:-->
  <FamilyStrengths></FamilyStrengths>
  <!--Optional:-->
  <Interpersonal></Interpersonal>
  <!--Optional:-->
  <EducationalSetting></EducationalSetting>
  <!--Optional:-->
  <TalentsInterests></TalentsInterests>
  <!--Optional:-->
  <SpiritualReligious></SpiritualReligious>
  <!--Optional:-->
  <CulturalIdentity></CulturalIdentity>
  <!--Optional:-->
  <CommunityLife></CommunityLife>
  <!--Optional:-->
  <NaturalSupports></NaturalSupports>
  <!--Optional:-->
  <Resiliency></Resiliency>
</typ:StrengthsDomain>
<typ:CulturalFactors>
  <!--Optional:-->
  <Language></Language>
  <!--Optional:-->
  <TraditionsAndRituals></TraditionsAndRituals>
  <!--Optional:-->
  <CulturalStress></CulturalStress>
</typ:CulturalFactors>
<!--0 to 4 repetitions:-->
<typ:CaregiverResourcesAndNeeds>
  <!--Optional:-->
  <CaregiverName></CaregiverName>
  <!--Optional:-->
  <CaregiverRelationship></CaregiverRelationship>
  <!--Optional:-->
  <Supervision></Supervision>
  <!--Optional:-->
  <InvolvementWithCare></InvolvementWithCare>
  <!--Optional:-->

```

```

<Knowledge></Knowledge>
<!--Optional:-->
<SocialResources></SocialResources>
<!--Optional:-->
<ResidentialStability></ResidentialStability>
<!--Optional:-->
<MedicalPhysical></MedicalPhysical>
<!--Optional:-->
<MentalHealth></MentalHealth>
<!--Optional:-->
<SubstanceUse></SubstanceUse>
<!--Optional:-->
<Development></Development>
<!--Optional:-->
<Safety></Safety>
</typ:CaregiverResourcesAndNeeds>
<typ:PotentiallyTraumaticAdverseChildhoodExp>
  <!--Optional:-->
  <SexualAbuse></SexualAbuse>
  <!--Optional:-->
  <PhysicalAbuse></PhysicalAbuse>
  <!--Optional:-->
  <EmotionalAbuse></EmotionalAbuse>
  <!--Optional:-->
  <Neglect></Neglect>
  <!--Optional:-->
  <MedicalTrauma></MedicalTrauma>
  <!--Optional:-->
  <WitnessToFamilyViolence></WitnessToFamilyViolence>
  <!--Optional:-->
  <WitnessToCommunitySchoolViolence></WitnessToCommunitySchoolViolence>
  <!--Optional:-->
  <NaturalOrManmadeDisaster></NaturalOrManmadeDisaster>
  <!--Optional:-->
  <WarTerrorismAffected></WarTerrorismAffected>
  <!--Optional:-->
  <VictimWitnessToCriminalActivity></VictimWitnessToCriminalActivity>
  <!--Optional:-->
  <DisruptionInCaregivingAttachmntLosses></DisruptionInCaregivingAttachmntLosses>
  <!--Optional:-->
  <ParentalCriminalBehaviors></ParentalCriminalBehaviors>
</typ:PotentiallyTraumaticAdverseChildhoodExp>
</typ:AddCANS>
</ns:AddCANS_Input>
</soapenv:Body>
</soapenv:Envelope>

```

## B.2.4 XML STRUCTURE OF ADDCANS\_OUTPUT

SUCCESSFUL:

```
<s:Envelope xmlns:s="http://schemas.xmlsoap.org/soap/envelope/">
  <s:Body>
    <ns0:AddCANS_Output xmlns:ns0="http://b2b.dmh.lacounty.gov/EPSDT/202101"
xmlns:mc="http://b2b.dmh.lacounty.gov/EPSDT/202101/MessageContextOutput"
xmlns:t="http://b2b.dmh.lacounty.gov/EPSDT/202101/types">
      <mc:MessageContextOutput Acknowledgement="Completed successfully."/>
      <t:EPSDT t:SubmissionID=""/>
    </ns0:AddCANS_Output>
  </s:Body>
</s:Envelope>
```

UNSUCCESSFUL:

See [Appendix](#)



## B.3 Get CANS

**Definition:**

The Get CANS operation allows Trading Partners to retrieve data from an existing active EPSDT CANS record of a client.

**Use Cases:**

# 1: Retrieve data from an existing active EPSDT CANS record of a client that has a submission ID with data type as integer.

# 2: Retrieve data from an existing active EPSDT CANS record of a client that has a submission ID as GUID.

**Service Action:**

GetCANS operation is available to satisfy the use case. The EPSDT API will perform the retrieve action.

**Precondition:**

- TP is authenticated and can provide an EPSDT service compliant input.
- An active EPSDT CANS record exists for the client.
- TP has gathered the submissionID by using the SearchCANS operation. For more information on search—visit section [B.1](#)

### B.3.1 GETCANS\_INPUT

\* R = Required; CR = ConditionallyRequired; O = Optional

Ref #	Data Element	R CR O	Data Type	Min Len	Max Len	Restriction	Acceptable Values
1	ProgramID	R	String	5	5	n/a	ProgramID configured in BizTalk associated with the Digital Certificate used for authentication.
<b>CANS</b>							
2	SubmissionID	R	String	1	36	n/a	Either GUID or Numbers only Note: GUID consists of 36 characters broken up in to a sequence of hexadecimal numbers (0-9 and a-f) in the following format: XXXXXXXX-XXXX-XXXX-XXXX-XXXXXXXXXXXX

### B.3.2 GETCANS\_OUTPUT

Note: When a data attribute has no value, it will be omitted in the output.

Ref #	Data Element	Data Type	R/O/CR	Min Len	Max Len
1	Acknowledgement	String	R	100	500

Ref #	Data Element	Data Type	R/O/CR	Min Len	Max Len
2	SubmissionID	String	R	1	36
<b>AdministrativeData</b>					
<b>Assessment</b>					
3	Date	String	R	10	10
4	Type	String	R	1	1
5	AdminCloseReason	String	CR	1	1
<b>Client</b>					
6	ID	String	R	1	9
7	ProviderNumber	String	R	4	4
8	HasCaregiver	String	R	1	1
9	AssessingPractitionerNPI	String	R	10	10
10	ContributorName1	String	R	1	80
11	ContributorRelationship1	String	R	1	2
12	ContributorName2	String	O	n/a	80
13	ContributorRelationship2	String	O	n/a	n/a
14	ContributorName3	String	O	n/a	80
15	ContributorRelationship3	String	O	n/a	n/a
<b>Child BehavioralEmotionalNeeds</b>					
16	Psychosis	String	R	1	1
17	ImpulsivityHyperactivity	String	R	1	1
18	Depression	String	R	1	1
19	Anxiety	String	R	1	1
20	Oppositional	String	R	1	1
21	Conduct	String	R	1	1
22	AngerControl	String	R	1	1
23	SubstanceUse	String	R	1	1
24	AdjustmentToTrauma	String	R	1	1
<b>Life DomainFunctioning</b>					
25	FamilyFunctioning	String	R	1	1
26	LivingSituation	String	R	1	1
27	SocialFunctioning	String	R	1	1
28	DevelopmentalIntellectual	String	R	1	1
29	DecisionMaking	String	R	1	1
30	SchoolBehavior	String	R	1	1
31	SchoolAchievement	String	R	1	1
32	SchoolAttendance	String	R	1	1
33	MedicalPhysical	String	R	1	1

Ref #	Data Element	Data Type	R/O/CR	Min Len	Max Len
34	SexualDevelopment	String	R	1	1
35	Sleep	String	R	1	1
<b>RiskBehaviors</b>					
36	SuicideRisk	String	R	1	1
37	NonSuicidalSelfInjuriousBehavior	String	R	1	1
38	OtherSelfHarm	String	R	1	1
39	DangerToOthers	String	R	1	1
40	SexualAggression	String	R	1	1
41	DelinquentBehavior	String	R	1	1
42	Runaway	String	R	1	1
43	IntentionalMisbehavior	String	R	1	1
<b>StrengthsDomain</b>					
44	FamilyStrengths	String	R	1	1
45	Interpersonal	String	R	1	1
46	EducationalSetting	String	R	1	1
47	TalentsInterests	String	R	1	1
48	SpiritualReligious	String	R	1	1
49	CulturalIdentity	String	R	1	1
50	CommunityLife	String	R	1	1
51	NaturalSupports	String	R	1	1
52	Resiliency	String	R	1	1
<b>CulturalFactors</b>					
53	Language	String	R	1	1
54	TraditionsAndRituals	String	R	1	1
55	CulturalStress	String	R	1	1
<b>Note: The following CaregiverResourcesAndNeeds node(s) will occur from 0 to 4 times depend on the existence of data.</b>					
<b>CaregiverResourcesAndNeeds (n)</b>					
<b>Note: n = 0 to 3</b>					
56	CaregiverName	String	CR	n/a	80
57	CaregiverRelationship	String	CR	n/a	n/a
58	Supervision	String	CR	n/a	n/a
59	InvolvementWithCare	String	CR	n/a	n/a
60	Knowledge	String	CR	n/a	n/a
61	SocialResources	String	CR	n/a	n/a
62	ResidentialStability	String	CR	n/a	n/a
63	MedicalPhysical	String	CR	n/a	n/a
64	MentalHealth	String	CR	n/a	n/a

Ref #	Data Element	Data Type	R/O/CR	Min Len	Max Len
65	SubstanceUse	String	CR	n/a	n/a
66	Development	String	CR	n/a	n/a
67	Safety	String	CR	n/a	n/a
<b>PotentiallyTraumaticAdverseChildhoodExp</b>					
68	SexualAbuse	String	R	1	1
69	PhysicalAbuse	String	R	1	1
70	EmotionalAbuse	String	R	1	1
71	Neglect	String	R	1	1
72	MedicalTrauma	String	R	1	1
73	WitnessToFamilyViolence	String	R	1	1
74	WitnessToCommunitySchoolViolence	String	R	1	1
75	NaturalOrManmadeDisaster	String	R	1	1
76	WarTerrorismAffected	String	R	1	1
77	VictimWitnessToCriminalActivity	String	R	1	1
78	DisruptionInCaregivingAttachmntLosses	String	R	1	1
79	ParentalCriminalBehaviors				
<b>Fault Schema</b>					
80	ErrorCode	String	R	4	10
81	ErrorDescription	String	R	100	500

### B.3.3 XML STRUCTURE OF GETCANS\_INPUT

```
<soapenv:Envelope xmlns:soapenv="http://schemas.xmlsoap.org/soap/envelope/"
xmlns:ns="http://b2b.dmh.lacounty.gov/EPSDT/202101"
xmlns:mes="http://b2b.dmh.lacounty.gov/EPSDT/202101/MessageContextInput"
xmlns:typ="http://b2b.dmh.lacounty.gov/EPSDT/202101/types">
  <soapenv:Header/>
  <soapenv:Body>
    <ns:GetCANS_Input>
      <mes:MessageContextInput typ:ProgramID="?"/>
      <typ:EPSDT typ:SubmissionID="?"/>
    </ns:GetCANS_Input>
  </soapenv:Body>
</soapenv:Envelope>
```

### B.3.4 XML STRUCTURE OF GETCANS\_OUTPUT

SUCCESSFUL:

```
<s:Envelope xmlns:s="http://schemas.xmlsoap.org/soap/envelope/">
  <s:Body>
```

```

<ns0:GetCANS_Output xmlns:ns0="http://b2b.dmh.lacounty.gov/EPSDT/202101"
xmlns:mc="http://b2b.dmh.lacounty.gov/EPSDT/202101/MessageContextOutput"
xmlns:t="http://b2b.dmh.lacounty.gov/EPSDT/202101/types">
  <mc:MessageContextOutput Acknowledgement="Completed successfully.">
    <Error/>
  </mc:MessageContextOutput>
  <t:CANS t:SubmissionID="">
    <t:CANSAdministrativeData>
      <Assessment Date="" Type="" AdminCloseReason=""/>
      <Client ID="" ProviderNumber="" HasCaregiver="" AssessingPractitionerNPI="" ContributorName1=""
ContributorRelationship1="" ContributorName2="" ContributorRelationship2="" ContributorName3=""
ContributorRelationship3=""/>
    </t:CANSAdministrativeData>
    <t:ChildBehavioralEmotionalNeeds>
      <Psychosis></Psychosis>
      <ImpulsivityHyperactivity></ImpulsivityHyperactivity>
      <Depression></Depression>
      <Anxiety></Anxiety>
      <Oppositional></Oppositional>
      <Conduct></Conduct>
      <AngerControl></AngerControl>
      <SubstanceUse></SubstanceUse>
      <AdjustmentToTrauma></AdjustmentToTrauma>
    </t:ChildBehavioralEmotionalNeeds>
    <t:LifeDomainFunctioning>
      <FamilyFunctioning></FamilyFunctioning>
      <LivingSituation></LivingSituation>
      <SocialFunctioning></SocialFunctioning>
      <DevelopmentalIntellectual></DevelopmentalIntellectual>
      <DecisionMaking></DecisionMaking>
      <SchoolBehavior></SchoolBehavior>
      <SchoolAchievement></SchoolAchievement>
      <SchoolAttendance></SchoolAttendance>
      <MedicalPhysical></MedicalPhysical>
      <SexualDevelopment></SexualDevelopment>
      <Sleep></Sleep>
    </t:LifeDomainFunctioning>
    <t:RiskBehaviors>
      <SuicideRisk></SuicideRisk>
      <NonSuicidalSelfInjuriousBehavior></NonSuicidalSelfInjuriousBehavior>
      <OtherSelfHarm></OtherSelfHarm>
      <DangerToOthers></DangerToOthers>
      <SexualAggression></SexualAggression>
      <DelinquentBehavior></DelinquentBehavior>
      <Runaway></Runaway>
      <IntentionalMisbehavior></IntentionalMisbehavior>
    </t:RiskBehaviors>
    <t:StrengthsDomain>
      <FamilyStrengths></FamilyStrengths>
      <Interpersonal></Interpersonal>
      <EducationalSetting></EducationalSetting>
      <TalentsInterests></TalentsInterests>

```

```

<SpiritualReligious></SpiritualReligious>
<CulturalIdentity></CulturalIdentity>
<CommunityLife></CommunityLife>
<NaturalSupports></NaturalSupports>
<Resiliency></Resiliency>
</t:StrengthsDomain>
<t:CulturalFactors>
  <Language></Language>
  <TraditionsAndRituals></TraditionsAndRituals>
  <CulturalStress></CulturalStress>
</t:CulturalFactors>
<t:CaregiverResourcesAndNeeds>
  <CaregiverName></CaregiverName>
  <CaregiverRelationship></CaregiverRelationship>
  <Supervision></Supervision>
  <InvolvementWithCare>1</InvolvementWithCare>
  <Knowledge>1</Knowledge>
  <SocialResources></SocialResources>
  <ResidentialStability></ResidentialStability>
  <MedicalPhysical></MedicalPhysical>
  <MentalHealth></MentalHealth>
  <SubstanceUse></SubstanceUse>
  <Development></Development>
  <Safety></Safety>
</t:CaregiverResourcesAndNeeds>
<t:PotentiallyTraumaticAdverseChildhoodExp>
  <SexualAbuse></SexualAbuse>
  <PhysicalAbuse></PhysicalAbuse>
  <EmotionalAbuse></EmotionalAbuse>
  <Neglect></Neglect>
  <MedicalTrauma></MedicalTrauma>
  <WitnessToFamilyViolence></WitnessToFamilyViolence>
  <WitnessToCommunitySchoolViolence></WitnessToCommunitySchoolViolence>
  <NaturalOrManmadeDisaster></NaturalOrManmadeDisaster>
  <WarTerrorismAffected></WarTerrorismAffected>
  <VictimWitnessToCriminalActivity></VictimWitnessToCriminalActivity>
  <DisruptionInCaregivingAttachmntLosses></DisruptionInCaregivingAttachmntLosses>
  <ParentalCriminalBehaviors></ParentalCriminalBehaviors>
</t:PotentiallyTraumaticAdverseChildhoodExp>
</t:CANS>
</ns0:GetCANS_Output>
</s:Body>
</s:Envelope>

```

UNSUCCESSFUL:

See [Appendix](#)

## B.4 Update CANS

**Definition:**

The Update EPSDT CANS record operation allows Trading Partners to update an existing active EPSDT CANS record linked to their own Provider Number associated with their own Program ID.

**Use Cases:**

- # 1: Update an active EPSDT CANS record for a client that does not exist in IBHIS.
- # 2: Update an active EPSDT CANS record for a client that exists in IBHIS.
- # 3: Update an existing active EPSDT CANS record of a client that has a submission ID with data type as integer.
- # 4: Update an existing active EPSDT CANS record of a client that has a submission ID as GUID.

**Service Action:**

*UpdateCANS* operation is available to satisfy the above mentioned use cases. Note that each EPSDT CANS record is identified by a unique SubmissionID associated to their ProgramID and Provider ID. Trading Partners will need to submit these IDs in order to perform an update. EPSDT Api will perform the update action.

**Precondition:**

- TP is authenticated and can provide an EPSDT service compliant input.
- TP attempted to update an EPSDT CANS record that is active and linked to any of the Provider Numbers that is associated to TP’s ProgramID.
- TP has performed a GetCANS to retrieve existing values. For more information on Get—visit section [B.3](#)

**Note:**

**Restriction:**

**ProviderNumber–SubmissionID association:** When a Trading Partner submits a submission ID to update an existing active CANS record, that ID must be linked to one of the Provider Numbers associated with their Program ID.

**Update behavior:** When an optional data attribute is not sent through update operation, solution will keep the existing value.

### B.4.1 UPDATECANS\_INPUT

\* R = Required; CR = ConditionallyRequired; O = Optional

Ref #	Data Element	R CR O	Data Type	Min Len	Max Len	Restriction	Acceptable Values
1	ProgramID	R	String	5	5	n/a	ProgramID associated with the Digital Certificate used for authentication distributed by LACDMH.
<b>CANS</b>							
2	SubmissionID	R	String	1	36	n/a	Either GUID or Numbers only Note: GUID consists of 36 characters broken

Ref #	Data Element	R CR O	Data Type	Min Len	Max Len	Restriction	Acceptable Values
							up in to a sequence of hexadecimal numbers (0-9 and a-f) in the following format: XXXXXXXX-XXXX-XXXX-XXXX-XXXXXXXXXXXX
<b>Administrative Data</b>							
<b>Client</b>							
3	ProviderNumber	R	Enumeration	4	4	Must be associated with the Program ID. Restricted to a list of approved codes.	Use dictionary service. ProviderNumber Section F
4	AssessingPractitionerNPI	R	String	10	10	n/a	Numbers only
<b>Note: Following data attributes (Ref # 5 thru Ref # 111) should not be submitted when [Type]="5" for an existing active record.</b>							
5	ContributorName1	CR	String	1	80	n/a	Alpha and following special characters allowed: hyphen (-), apostrophe (') and space ( )
6	ContributorRelationship1	CR	Enumeration	n/a	n/a	Acceptable Values Only	Use dictionary service. ContributorRelationship Section F
7	ContributorName2	O	String	0	80	n/a	Alpha and following special characters allowed: hyphen (-), apostrophe (') and space ( )
8	ContributorRelationship2	O	Enumeration	n/a	n/a	Acceptable Values Only	Use dictionary service. ContributorRelationship Section F
9	ContributorName3	O	String	0	80	n/a	Alpha and following special characters allowed: hyphen (-), apostrophe (') and space ( )
10	ContributorRelationship3	O	Enumeration	n/a	n/a	Acceptable Values Only	Use dictionary service. ContributorRelationship Section F
<b>Assessment</b>							
11	AdminCloseReason	CR	Enumeration	n/a	n/a	Required when code "5" exists for Type for the	Use dictionary service. Assessment Section F Note: Code 1, 3 or 4 accepted when



Ref #	Data Element	R CR O	Data Type	Min Len	Max Len	Restriction	Acceptable Values
						record being updated.  Restricted to a list of approved codes.	existing code in Type is "5"
<b>ChildBehavioralEmotionalNeeds</b>							
12	Psychosis	CR	Enumeration	n/a	n/a	Acceptable Values Only	Use dictionary service. CANSQA Section F
13	ImpulsivityHyperactivity	CR	Enumeration	n/a	n/a	Acceptable Values Only	Use dictionary service. CANSQA Section F
14	Depression	CR	Enumeration	n/a	n/a	Acceptable Values Only	Use dictionary service. CANSQA Section F
15	Anxiety	CR	Enumeration	n/a	n/a	Acceptable Values Only	Use dictionary service. CANSQA Section F
16	Oppositional	CR	Enumeration	n/a	n/a	Acceptable Values Only	Use dictionary service. CANSQA Section F
17	Conduct	CR	Enumeration	n/a	n/a	Acceptable Values Only	Use dictionary service. CANSQA Section F
18	AngerControl	CR	Enumeration	n/a	n/a	Acceptable Values Only	Use dictionary service. CANSQA Section F
19	SubstanceUse	CR	Enumeration	n/a	n/a	Acceptable Values Only	Use dictionary service. CANSQA Section F
20	AdjustmentToTrauma	CR	Enumeration	n/a	n/a	Acceptable Values Only	Use dictionary service. CANSQA Section F
<b>LifeDomainFunctioning</b>							
21	FamilyFunctioning	CR	Enumeration	n/a	n/a	Acceptable Values Only	Use dictionary service. CANSQA Section F
22	LivingSituation	CR	Enumeration	n/a	n/a	Acceptable Values Only	Use dictionary service. CANSQA Section F
23	SocialFunctioning	CR	Enumeration	n/a	n/a	Acceptable Values Only	Use dictionary service. CANSQA Section F
24	DevelopmentalIntellectual	CR	Enumeration	n/a	n/a	Acceptable Values Only	Use dictionary service. CANSQA Section F
25	DecisionMaking	CR	Enumeration	n/a	n/a	Acceptable Values Only	Use dictionary service. CANSQA Section F
26	SchoolBehavior	CR	Enumeration	n/a	n/a	Acceptable Values Only	Use dictionary service. CANSQA Section F
27	SchoolAchievement	CR	Enumeration	n/a	n/a	Acceptable Values Only	Use dictionary service. CANSQA Section F
28	SchoolAttendance	CR	Enumeration	n/a	n/a	Acceptable Values Only	Use dictionary service. CANSQA Section F
29	MedicalPhysical	CR	Enumeration	n/a	n/a	Acceptable Values Only	Use dictionary service. CANSQA Section F
30	SexualDevelopment	CR	Enumeration	n/a	n/a	Acceptable Values Only	Use dictionary service. CANSQA Section F

Ref #	Data Element	R CR O	Data Type	Min Len	Max Len	Restriction	Acceptable Values
31	Sleep	CR	Enumeration	n/a	n/a	Acceptable Values Only	Use dictionary service. CANSQA Section F
<b>RiskBehaviors</b>							
32	SuicideRisk	CR	Enumeration	n/a	n/a	Acceptable Values Only	Use dictionary service. CANSQA Section F
33	NonSuicidalSelfInjuriousBehavior	CR	Enumeration	n/a	n/a	Acceptable Values Only	Use dictionary service. CANSQA Section F
34	OtherSelfHarm	CR	Enumeration	n/a	n/a	Acceptable Values Only	Use dictionary service. CANSQA Section F
35	DangerToOthers	CR	Enumeration	n/a	n/a	Acceptable Values Only	Use dictionary service. CANSQA Section F
36	SexualAggression	CR	Enumeration	n/a	n/a	Acceptable Values Only	Use dictionary service. CANSQA Section F
37	DelinquentBehavior	CR	Enumeration	n/a	n/a	Acceptable Values Only	Use dictionary service. CANSQA Section F
38	Runaway	CR	Enumeration	n/a	n/a	Acceptable Values Only	Use dictionary service. CANSQA Section F
39	IntentionalMisbehavior	CR	Enumeration	n/a	n/a	Acceptable Values Only	Use dictionary service. CANSQA Section F
<b>StrengthsDomain</b>							
40	FamilyStrengths	CR	Enumeration	n/a	n/a	Acceptable Values Only	Use dictionary service. CANSQA Section F
41	Interpersonal	CR	Enumeration	n/a	n/a	Acceptable Values Only	Use dictionary service. CANSQA Section F
42	EducationalSetting	CR	Enumeration	n/a	n/a	Acceptable Values Only	Use dictionary service. CANSQA Section F
43	TalentsInterests	CR	Enumeration	n/a	n/a	Acceptable Values Only	Use dictionary service. CANSQA Section F
44	SpiritualReligious	CR	Enumeration	n/a	n/a	Acceptable Values Only	Use dictionary service. CANSQA Section F
45	CulturalIdentity	CR	Enumeration	n/a	n/a	Acceptable Values Only	Use dictionary service. CANSQA Section F
46	CommunityLife	CR	Enumeration	n/a	n/a	Acceptable Values Only	Use dictionary service. CANSQA Section F
47	NaturalSupports	CR	Enumeration	n/a	n/a	Acceptable Values Only	Use dictionary service. CANSQA Section F
48	Resiliency	CR	Enumeration	n/a	n/a	Acceptable Values Only	Use dictionary service. CANSQA Section F
<b>CulturalFactors</b>							
49	Language	CR	Enumeration	n/a	n/a	Acceptable Values Only	Use dictionary service. CANSQA Section F
50	TraditionsAndRituals	CR	Enumeration	n/a	n/a	Acceptable Values Only	Use dictionary service. CANSQA Section F
51	CulturalStress	CR	Enumeration	n/a	n/a	Acceptable Values Only	Use dictionary service. CANSQA Section F
<b>CaregiverResourcesAndNeeds (0)</b>							

Ref #	Data Element	R CR O	Data Type	Min Len	Max Len	Restriction	Acceptable Values
52	CaregiverName	O	String	0	80	n/a	Alpha and following special characters allowed: hyphen (-), apostrophe (') and space ( )
53	CaregiverRelationship	O	Enumeration	n/a	n/a	Acceptable Values Only	Use dictionary service. CaregiverRelationship Section F
54	Supervision	O	Enumeration	n/a	n/a	Acceptable Values Only	Use dictionary service. CANSCRQA Section F
55	InvolvementWithCare	O	Enumeration	n/a	n/a	Acceptable Values Only	Use dictionary service. CANSCRQA Section F
56	Knowledge	O	Enumeration	n/a	n/a	Acceptable Values Only	Use dictionary service. CANSCRQA Section F
57	SocialResources	O	Enumeration	n/a	n/a	Acceptable Values Only	Use dictionary service. CANSCRQA Section F
58	ResidentialStability	O	Enumeration	n/a	n/a	Acceptable Values Only	Use dictionary service. CANSCRQA Section F
59	MedicalPhysical	O	Enumeration	n/a	n/a	Acceptable Values Only	Use dictionary service. CANSCRQA Section F
60	MentalHealth	O	Enumeration	n/a	n/a	Acceptable Values Only	Use dictionary service. CANSCRQA Section F
61	SubstanceUse	O	Enumeration	n/a	n/a	Acceptable Values Only	Use dictionary service. CANSCRQA Section F
62	Development	O	Enumeration	n/a	n/a	Acceptable Values Only	Use dictionary service. CANSCRQA Section F
63	Safety	O	Enumeration	n/a	n/a	Acceptable Values Only	Use dictionary service. CANSCRQA Section F
<b>CaregiverResourcesAndNeeds (1)</b>							
64	CaregiverName	O	String	0	80	n/a	Alpha and following special characters allowed: hyphen (-), apostrophe (') and space ( )
65	CaregiverRelationship	O	Enumeration	n/a	n/a	Acceptable Values Only	Use dictionary service. CaregiverRelationship Section F
66	Supervision	O	Enumeration	n/a	n/a	Acceptable Values Only	Use dictionary service. CANSCRQA Section F
67	InvolvementWithCare	O	Enumeration	n/a	n/a	Acceptable Values Only	Use dictionary service. CANSCRQA Section F
68	Knowledge	O	Enumeration	n/a	n/a	Acceptable Values Only	Use dictionary service. CANSCRQA Section F
69	SocialResources	O	Enumeration	n/a	n/a	Acceptable Values Only	Use dictionary service. CANSCRQA Section F
70	ResidentialStability	O	Enumeration	n/a	n/a	Acceptable Values Only	Use dictionary service. CANSCRQA Section F

Ref #	Data Element	R CR O	Data Type	Min Len	Max Len	Restriction	Acceptable Values
71	MedicalPhysical	O	Enumeration	n/a	n/a	Acceptable Values Only	Use dictionary service. CANSCRQA Section F
72	MentalHealth	O	Enumeration	n/a	n/a	Acceptable Values Only	Use dictionary service. CANSCRQA Section F
73	SubstanceUse	O	Enumeration	n/a	n/a	Acceptable Values Only	Use dictionary service. CANSCRQA Section F
74	Development	O	Enumeration	n/a	n/a	Acceptable Values Only	Use dictionary service. CANSCRQA Section F
75	Safety	O	Enumeration	n/a	n/a	Acceptable Values Only	Use dictionary service. CANSCRQA Section F
<b>CaregiverResourcesAndNeeds (2)</b>							
76	CaregiverName	O	String	0	80	n/a	Alpha and following special characters allowed: hyphen (-), apostrophe (') and space ( )
77	CaregiverRelationship	O	Enumeration	n/a	n/a	Acceptable Values Only	Use dictionary service. CaregiverRelationship Section F
78	Supervision	O	Enumeration	n/a	n/a	Acceptable Values Only	Use dictionary service. CANSCRQA Section F
79	InvolvementWithCare	O	Enumeration	n/a	n/a	Acceptable Values Only	Use dictionary service. CANSCRQA Section F
80	Knowledge	O	Enumeration	n/a	n/a	Acceptable Values Only	Use dictionary service. CANSCRQA Section F
81	SocialResources	O	Enumeration	n/a	n/a	Acceptable Values Only	Use dictionary service. CANSCRQA Section F
82	ResidentialStability	O	Enumeration	n/a	n/a	Acceptable Values Only	Use dictionary service. CANSCRQA Section F
83	MedicalPhysical	O	Enumeration	n/a	n/a	Acceptable Values Only	Use dictionary service. CANSCRQA Section F
84	MentalHealth	O	Enumeration	n/a	n/a	Acceptable Values Only	Use dictionary service. CANSCRQA Section F
85	SubstanceUse	O	Enumeration	n/a	n/a	Acceptable Values Only	Use dictionary service. CANSCRQA Section F
86	Development	O	Enumeration	n/a	n/a	Acceptable Values Only	Use dictionary service. CANSCRQA Section F
87	Safety	O	Enumeration	n/a	n/a	Acceptable Values Only	Use dictionary service. CANSCRQA Section F
<b>CaregiverResourcesAndNeeds (3)</b>							
88	CaregiverName	O	String	0	80	n/a	Alpha and following special characters allowed: hyphen (-), apostrophe (') and space ( )
89	CaregiverRelationship	O	Enumeration	n/a	n/a	Acceptable Values Only	Use dictionary service. CaregiverRelationship Section F

Ref #	Data Element	R CR O	Data Type	Min Len	Max Len	Restriction	Acceptable Values
90	Supervision	O	Enumeration	n/a	n/a	Acceptable Values Only	Use dictionary service. CANSCRQA Section F
91	InvolvementWithCare	O	Enumeration	n/a	n/a	Acceptable Values Only	Use dictionary service. CANSCRQA Section F
92	Knowledge	O	Enumeration	n/a	n/a	Acceptable Values Only	Use dictionary service. CANSCRQA Section F
93	SocialResources	O	Enumeration	n/a	n/a	Acceptable Values Only	Use dictionary service. CANSCRQA Section F
94	ResidentialStability	O	Enumeration	n/a	n/a	Acceptable Values Only	Use dictionary service. CANSCRQA Section F
95	MedicalPhysical	O	Enumeration	n/a	n/a	Acceptable Values Only	Use dictionary service. CANSCRQA Section F
96	MentalHealth	O	Enumeration	n/a	n/a	Acceptable Values Only	Use dictionary service. CANSCRQA Section F
97	SubstanceUse	O	Enumeration	n/a	n/a	Acceptable Values Only	Use dictionary service. CANSCRQA Section F
98	Development	O	Enumeration	n/a	n/a	Acceptable Values Only	Use dictionary service. CANSCRQA Section F
99	Safety	O	Enumeration	n/a	n/a	Acceptable Values Only	Use dictionary service. CANSCRQA Section F
<b>PotentiallyTraumaticAdverseChildhoodExp</b>							
100	SexualAbuse	CR	Enumeration	n/a	n/a	Acceptable Values Only	E.1.3
101	PhysicalAbuse	CR	Enumeration	n/a	n/a	Acceptable Values Only	E.1.3
102	EmotionalAbuse	CR	Enumeration	n/a	n/a	Acceptable Values Only	E.1.3
103	Neglect	CR	Enumeration	n/a	n/a	Acceptable Values Only	E.1.3
104	MedicalTrauma	CR	Enumeration	n/a	n/a	Acceptable Values Only	E.1.3
105	WitnessToFamilyViolence	CR	Enumeration	n/a	n/a	Acceptable Values Only	E.1.3
106	WitnessToCommunitySchoolViolence	CR	Enumeration	n/a	n/a	Acceptable Values Only	E.1.3
107	NaturalOrManmadeDisaster	CR	Enumeration	n/a	n/a	Acceptable Values Only	E.1.3
108	WarTerrorismAffected	CR	Enumeration	n/a	n/a	Acceptable Values Only	E.1.3
109	VictimWitnessToCriminalActivity	CR	Enumeration	n/a	n/a	Acceptable Values Only	E.1.3
110	DisruptionInCaregivingAttachmntLosses	CR	Enumeration	n/a	n/a	Acceptable Values Only	E.1.3
111	ParentalCriminalBehaviors	CR	Enumeration	n/a	n/a	Acceptable Values Only	E.1.3

### B.4.2 UPDATECANS\_OUTPUT

Ref #	Data Element	Data Type	Required	Min Len	Max Len
<b>Successful</b>					
1	Acknowledgement	String	Yes	100	500
2	SubmissionID	String	Yes	1	36
<b>Unsuccessful</b>					
3	ErrorCode	String	Yes	4	10
4	ErrorDescription	String	Yes	100	500

### B.4.3 XML STRUCTURE OF UPDATECANS\_INPUT

```
<soapenv:Envelope xmlns:soapenv="http://schemas.xmlsoap.org/soap/envelope/"
xmlns:ns="http://b2b.dmh.lacounty.gov/EPSDT/202101"
xmlns:mes="http://b2b.dmh.lacounty.gov/EPSDT/202101/MessageContextInput"
xmlns:typ="http://b2b.dmh.lacounty.gov/EPSDT/202101/types">
  <soapenv:Header/>
  <soapenv:Body>
    <ns:UpdateCANS_Input>
      <mes:MessageContextInput typ:ProgramID=""/>
      <typ:UpdateCANS typ:SubmissionID=""/>
      <CANSAdministrativeData>
        <Client ProviderNumber="?" AssessingPractitionerNPI="?" ContributorName1="?"
ContributorRelationship1="?" ContributorName2="?" ContributorRelationship2="?" ContributorName3="?"
ContributorRelationship3=""/>
        <Assessment AdminCloseReason=""/>
      </CANSAdministrativeData>
      <typ:ChildBehavioralEmotionalNeeds>
        <!--Optional:-->
        <Psychosis></Psychosis>
        <!--Optional:-->
        <ImpulsivityHyperactivity></ImpulsivityHyperactivity>
        <!--Optional:-->
        <Depression></Depression>
        <!--Optional:-->
        <Anxiety></Anxiety>
        <!--Optional:-->
        <Oppositional></Oppositional>
        <!--Optional:-->
        <Conduct></Conduct>
        <!--Optional:-->
        <AngerControl></AngerControl>
        <!--Optional:-->
      </typ:ChildBehavioralEmotionalNeeds>
    </ns:UpdateCANS_Input>
  </soapenv:Body>
</soapenv:Envelope>
```

```

<SubstanceUse></SubstanceUse>
<!--Optional:-->
<AdjustmentToTrauma></AdjustmentToTrauma>
</typ:ChildBehavioralEmotionalNeeds>
<typ:LifeDomainFunctioning>
  <!--Optional:-->
  <FamilyFunctioning></FamilyFunctioning>
  <!--Optional:-->
  <LivingSituation></LivingSituation>
  <!--Optional:-->
  <SocialFunctioning></SocialFunctioning>
  <!--Optional:-->
  <DevelopmentalIntellectual></DevelopmentalIntellectual>
  <!--Optional:-->
  <DecisionMaking></DecisionMaking>
  <!--Optional:-->
  <SchoolBehavior></SchoolBehavior>
  <!--Optional:-->
  <SchoolAchievement></SchoolAchievement>
  <!--Optional:-->
  <SchoolAttendance></SchoolAttendance>
  <!--Optional:-->
  <MedicalPhysical></MedicalPhysical>
  <!--Optional:-->
  <SexualDevelopment></SexualDevelopment>
  <!--Optional:-->
  <Sleep></Sleep>
</typ:LifeDomainFunctioning>
<typ:RiskBehaviors>
  <!--Optional:-->
  <SuicideRisk></SuicideRisk>
  <!--Optional:-->
  <NonSuicidalSelfInjuriousBehavior></NonSuicidalSelfInjuriousBehavior>
  <!--Optional:-->
  <OtherSelfHarm></OtherSelfHarm>
  <!--Optional:-->
  <DangerToOthers></DangerToOthers>
  <!--Optional:-->
  <SexualAggression></SexualAggression>
  <!--Optional:-->
  <DelinquentBehavior></DelinquentBehavior>
  <!--Optional:-->
  <Runaway></Runaway>
  <!--Optional:-->
  <IntentionalMisbehavior></IntentionalMisbehavior>

```

```

</typ:RiskBehaviors>
<typ:StrengthsDomain>
  <!--Optional:-->
  <FamilyStrengths></FamilyStrengths>
  <!--Optional:-->
  <Interpersonal></Interpersonal>
  <!--Optional:-->
  <EducationalSetting></EducationalSetting>
  <!--Optional:-->
  <TalentsInterests></TalentsInterests>
  <!--Optional:-->
  <SpiritualReligious></SpiritualReligious>
  <!--Optional:-->
  <CulturalIdentity></CulturalIdentity>
  <!--Optional:-->
  <CommunityLife></CommunityLife>
  <!--Optional:-->
  <NaturalSupports></NaturalSupports>
  <!--Optional:-->
  <Resiliency></Resiliency>
</typ:StrengthsDomain>
<typ:CulturalFactors>
  <!--Optional:-->
  <Language></Language>
  <!--Optional:-->
  <TraditionsAndRituals></TraditionsAndRituals>
  <!--Optional:-->
  <CulturalStress></CulturalStress>
</typ:CulturalFactors>
<!--0 to 4 repetitions:-->
<typ:CaregiverResourcesAndNeeds>
  <!--Optional:-->
  <CaregiverName></CaregiverName>
  <!--Optional:-->
  <CaregiverRelationship></CaregiverRelationship>
  <!--Optional:-->
  <Supervision></Supervision>
  <!--Optional:-->
  <InvolvementWithCare></InvolvementWithCare>
  <!--Optional:-->
  <Knowledge></Knowledge>
  <!--Optional:-->
  <SocialResources></SocialResources>
  <!--Optional:-->
  <ResidentialStability></ResidentialStability>

```



```

<!--Optional:-->
<MedicalPhysical></MedicalPhysical>
<!--Optional:-->
<MentalHealth></MentalHealth>
<!--Optional:-->
<SubstanceUse></SubstanceUse>
<!--Optional:-->
<Development></Development>
<!--Optional:-->
<Safety></Safety>
</typ:CaregiverResourcesAndNeeds>
<typ:PotentiallyTraumaticAdverseChildhoodExp>
  <!--Optional:-->
  <SexualAbuse></SexualAbuse>
  <!--Optional:-->
  <PhysicalAbuse></PhysicalAbuse>
  <!--Optional:-->
  <EmotionalAbuse></EmotionalAbuse>
  <!--Optional:-->
  <Neglect></Neglect>
  <!--Optional:-->
  <MedicalTrauma></MedicalTrauma>
  <!--Optional:-->
  <WitnessToFamilyViolence></WitnessToFamilyViolence>
  <!--Optional:-->
  <WitnessToCommunitySchoolViolence></WitnessToCommunitySchoolViolence>
  <!--Optional:-->
  <NaturalOrManmadeDisaster></NaturalOrManmadeDisaster>
  <!--Optional:-->
  <WarTerrorismAffected></WarTerrorismAffected>
  <!--Optional:-->
  <VictimWitnessToCriminalActivity></VictimWitnessToCriminalActivity>
  <!--Optional:-->
  <DisruptionInCaregivingAttachmntLosses></DisruptionInCaregivingAttachmntLosses>
  <!--Optional:-->
  <ParentalCriminalBehaviors></ParentalCriminalBehaviors>
</typ:PotentiallyTraumaticAdverseChildhoodExp>
</typ:UpdateCANS>
</ns:UpdateCANS_Input>
</soapenv:Body>
</soapenv:Envelope>

```

#### B.4.4 XML STRUCTURE OF UPDATECANS\_OUTPUT

SUCCESSFUL:

```
<s:Envelope xmlns:s="http://schemas.xmlsoap.org/soap/envelope/">
  <s:Body>
    <ns0:UpdateCANS_Output xmlns:ns0="http://b2b.dmh.lacounty.gov/EPSDT/202101"
xmlns:mc="http://b2b.dmh.lacounty.gov/EPSDT/202101/MessageContextOutput"
xmlns:t="http://b2b.dmh.lacounty.gov/EPSDT/202101/types">
      <mc:MessageContextOutput Acknowledgement="Completed successfully."/>
      <t:EPSDT t:SubmissionID=""/>
    </ns0:UpdateCANS_Output>
  </s:Body>
</s:Envelope>
```

UNSUCCESSFUL:

See [Appendix](#)

## B.5 Delete CANS

**Definition:**

The Delete record operation allows Trading Partners to remove an active existing EPSDT CANS record of a client that is linked to any of the Provider Numbers that is associated with TP’s Program ID.

**Use Cases:**

- # 1: Delete an existing active EPSDT CANS record for a client that TP didn’t intend to create.
- # 2: Delete an existing active EPSDT CANS record for a client that TP created with erroneous entries that can’t be corrected through update operation.
- # 3: Delete an existing active EPSDT CANS record of a client that has a submission ID with data type as integer.
- # 4: Delete an existing active EPSDT CANS record of a client that has a submission ID as GUID.

**Service Action:**

DeleteCANS operation is available to satisfy the above mentioned use cases. EPSDT Api will perform the delete action.

**Precondition:**

- TP is authenticated and can provide an EPSDT service compliant input.
- TP attempted to update an EPSDT CANS record that is active and linked to any of the Provider Numbers that is associated to TP’s ProgramID.

### B.5.1 DELETECANS\_INPUT

\* R = Required; CR = ConditionallyRequired; O = Optional

Ref #	Data Element	R CR O	Data Type	Min Len	Max Len	Restriction	Acceptable Values
1	ProgramID	R	String	5	5	n/a	ProgramID configured in BizTalk associated with the Digital Certificate used for authentication.
<b>EPSDT</b>							
2	SubmissionID	R	String	1	36	n/a	Either GUID or Numbers only Note: GUID consists of 36 characters broken up in to a sequence of hexadecimal numbers (0-9 and a-f) in the following format: XXXXXXXX-XXXX-XXXX-XXXX-XXXXXXXXXXXX

### B.5.2 DELETECANS\_OUTPUT

Ref #	Data Element	Data Type	R/O/CR	Min Len	Max Len
<b>Successful</b>					
1	Acknowledgement	String	R	100	500
2	SubmissionID	String	R	1	36

Unsuccessful					
1	ErrorCode	String	R	4	10
2	ErrorDescription	String	R	100	500

### B.5.3 XML STRUCTURE OF DELETECANS\_INPUT

```
<soapenv:Envelope xmlns:soapenv="http://schemas.xmlsoap.org/soap/envelope/"
xmlns:ns="http://b2b.dmh.lacounty.gov/EPSDT/202101"
xmlns:mes="http://b2b.dmh.lacounty.gov/EPSDT/202101/MessageContextInput"
xmlns:typ="http://b2b.dmh.lacounty.gov/EPSDT/202101/TYPES">
  <soapenv:Header/>
  <soapenv:Body>
    <ns>DeleteCANS_Input>
      <mes:MessageContextInput typ:ProgramID=""/>
      <typ:EPSDT typ:SubmissionID=""/>
    </ns>DeleteCANS_Input>
  </soapenv:Body>
</soapenv:Envelope>
```

### B.5.4 XML STRUCTURE OF DELETECANS\_OUTPUT

SUCCESSFUL:

```
<s:Envelope xmlns:s="http://schemas.xmlsoap.org/soap/envelope/">
  <s:Body>
    <ns0>DeleteCANS_Output xmlns:ns0="http://b2b.dmh.lacounty.gov/EPSDT/202101"
xmlns:mc="http://b2b.dmh.lacounty.gov/EPSDT/202101/MessageContextOutput"
xmlns:t="http://b2b.dmh.lacounty.gov/EPSDT/202101/types">
      <mc:MessageContextOutput Acknowledgement="Record deleted successfully."/>
      <t:EPSDT t:SubmissionID=""/>
    </ns0>DeleteCANS_Output>
  </s:Body>
</s:Envelope>
```

UNSUCCESSFUL:

See [Appendix](#)

## C. Pediatric Symptom Checklist (PSC) USE CASE & SERVICE OPERATIONS

The following sections describe the various domains and related CANS Service operations in detail. Each sub-section describes use case, pre-condition(s), service operation with data attributes and any notes to follow.

### C.1 Search PSC

**Definition:**

The Search PSC operation allows Trading Partners to look up existing active EPSDT PSC record(s) for existing clients based on certain search criteria.

**Use Case:**

# 1: Search for existing record(s) using client’s IBHIS ID (ClientID).

**Service Action:**

SearchCANS operation is available to satisfy the above mentioned use cases. EPSDT Api will perform the search action. Search can be performed using the following options:

- Search by ClientID.

**Precondition:**

TP is authenticated and can provide an EPSDTservice compliant input.

**Note:**

#1: It is recommended that Trading Partners should use this operation prior to creating a new EPSDT record .

#2: ClientID means IBHIS Client ID.

#### C.1.1 SEARCHPSC\_INPUT

\* R = **Required**; CR = **ConditionallyRequired**; O = **Optional**

Ref #	Data Element	R CR O	Data Type	Min Len	Max Len	Restriction	Acceptable Values
1	ProgramID	R	String	5	5	n/a	ProgramID configured in BizTalk associated with the Digital Certificate used for authentication.
2	ClientID	R	String	1	9	n/a	numbers only

#### C.1.2 SEARCHPSC\_OUTPUT

Ref #	Data Element	Data Type	Required	MinL	MaxL
1	Acknowledgement	String	Yes	100	500
2	SubmissionID	String	Yes	1	32
3	AssessmentDate	String	Yes	10	10
4	AssessmentType	String	Yes	1	1
<b>Fault Schema</b>					
5	Error Code	String	Yes	4	10
6	Error Description	String	Yes	100	100

### C.1.3 XML STRUCTURE OF SEARCHPSC\_INPUT

```
<soapenv:Envelope xmlns:soapenv="http://schemas.xmlsoap.org/soap/envelope/"
xmlns:ns="http://b2b.dmh.lacounty.gov/EPSDT/202101"
xmlns:mes="http://b2b.dmh.lacounty.gov/EPSDT/202101/MessageContextInput"
xmlns:typ="http://b2b.dmh.lacounty.gov/EPSDT/202101/types">
  <soapenv:Header/>
  <soapenv:Body>
    <ns:SearchPSC_Input>
      <mes:MessageContextInput typ:ProgramID="" />
      <typ:SearchClient ClientID="" />
    </ns:SearchPSC_Input>
  </soapenv:Body>
</soapenv:Envelope>
```

### C.1.4 XML STRUCTURE OF SEARCHPSC\_OUTPUT

SUCCESSFUL:

```
<s:Envelope xmlns:s="http://schemas.xmlsoap.org/soap/envelope/">
  <s:Body>
    <ns0:SearchPSC_Output xmlns:ns0="http://b2b.dmh.lacounty.gov/EPSDT/202101"
xmlns:mc="http://b2b.dmh.lacounty.gov/EPSDT/202101/MessageContextOutput"
xmlns:t="http://b2b.dmh.lacounty.gov/EPSDT/202101/types">
      <mc:MessageContextOutput Acknowledgement="Completed successfully." />
      <t:SearchEPSDTResults>
        <ClientEPSDT SubmissionID="" AssessmentDate="" AssessmentType="" />
      </t:SearchEPSDTResults>
    </ns0:SearchPSC_Output>
  </s:Body>
</s:Envelope>
```

UNSUCCESSFUL:

See [Appendix](#)

## C.2 Add PSC

**Definition:**

The Add PSC operation allows Trading Partners to add new EPSDT – PSC record linked to their own Provider Number associated with their own Program ID for existing IBHIS client.

**Use Cases:**

# 1: Add a EPSDT PSC record for an existing IBHIS client.

**Service Action:**

The *AddPSCRequest* operation is available to create a new PSC record identified by a unique ID called SubmissionID for an existing IBHIS client. The EPSDT will create a new record.

**Precondition:**

- TP is authenticated and can provide an EPSDT service compliant input.
- TP has performed search through SearchPSC operation and search result showed that the client does not have existing service request for the intended data. For more information on search—visit section [C.1](#).
- TP has performed search (and admit as necessary) through Client Service application to ensure the client exists in IBHIS. For more information regarding *Client Service* see section [G. Client Service](#).

**Note:**

Duplicate Prevention Criteria:

When a Trading Partner submits an AddPSC operation to create a new PSC record for a client that has  
 -same ProviderNumber and  
 -same Assessment Type and  
 -same Assessment Date

as another existing active PSC record---then the service will return an error for that submission and record will not be created.

### C.2.1 ADDPSC\_INPUT

\* R = **Required**; CR = **ConditionallyRequired**; O = **Optional**

Ref #	Data Element	R CR O	Data Type	Min Len	Max Len	Restriction	Acceptable Values
1	ProgramID	R	String	5	5	n/a	ProgramID configured in BizTalk associated with the Digital Certificate used for authentication.
<b>Administrative Data</b>							
<b>Assessment</b>							
2	Date	CR	DateType	10	10	-Masking enforced: YYYY-MM-DD	numbers & dash (-) only

Ref #	Data Element	R CR O	Data Type	Min Len	Max Len	Restriction	Acceptable Values
						-Cannot be earlier than 2018-07-01 -Cannot be future date - Conditionally required when [Type] <>"5"	
3	Type	CR	Enumeration	n/a	n/a	-Acceptable Values Only - Conditionally required when [Type] <>"5"	Use dictionary service. Assessment Section
4	AdminCloseReason	CR	Enumeration	n/a	n/a	Required when Type = "5"  Restricted to a list of approved codes.	Use dictionary service. Assessment Section F Note: Code 1, 3 or 4 accepted when Type = "5"
<b>Client</b>							
4	ID	CR	String	1	9	Conditionally required when [Type] <>"5"	Numbers only
5	ProviderNumber	R	Enumeration	4	4	-Must be associated with the Program ID. Restricted to a list of approved codes. - Conditionally required when [Type] <>"5"	Use dictionary service. ProviderNumber Section F
6	PractitionerReviewingNPI	R	String	10	10	n/a	Numbers only
<b>Note: Following data attributes (Ref # 7 thru Ref # 46) should not be submitted when [Type]="5"</b>							
7	RespondentName	CR	String	1	80	Conditionally required when [Type] <>"5"	Alpha and following special characters allowed: hyphen (-), apostrophe (') and space ( )
8	RespondentRelationship	CR	Enumeration	n/a	n/a	-Acceptable Values Only -Conditionally required when [Type] <>"5"	Use dictionary service. RespondentRelationship Section F
9	CaregiverDeclinedToRespond	O	Enumeration	n/a	n/a	Acceptable Values Only	E.1.1



Ref #	Data Element	R CR O	Data Type	Min Len	Max Len	Restriction	Acceptable Values
10	CaregiverDidNotRespondToAllQuestions	O	Enumeration	n/a	n/a	Acceptable Values Only	E.1.2
<p><b>Note: The following PSCToolQ node is based on these requirements.</b>                      When Type attribute does not have code 5 and CaregiverDeclinedToRespond is 'Y' or CaregiverDidNotRespondToAllQuestions is 'Y', then the following PSCToolQ data attributes can be omitted in the submission.                      However, if Type attribute does not have code 5 and CaregiverDeclinedToRespond is not 'Y' and CaregiverDidNotRespondToAllRequiredQuestions is not 'Y', then up to three of the following PSCToolQ data attributes can be omitted in the submission.</p>							
<b>PSCToolQ</b>							
11	ComplainsOfAchesAndPains	CR	Enumeration	n/a	n/a	Acceptable Values Only	Use dictionary service. PSCQA Section F
12	SpendsMoreTimeAlone	CR	Enumeration	n/a	n/a	Acceptable Values Only	Use dictionary service. PSCQA Section F
13	TiresEasilyHasLittleEnergy	CR	Enumeration	n/a	n/a	Acceptable Values Only	Use dictionary service. PSCQA Section F
14	FidgetyUnableToSitStill	CR	Enumeration	n/a	n/a	Acceptable Values Only	Use dictionary service. PSCQA Section F
15	HasTroubleWithTeacher	CR	Enumeration	n/a	n/a	Acceptable Values Only	Use dictionary service. PSCSchool Section F
16	LessInterestedInSchool	CR	Enumeration	n/a	n/a	Acceptable Values Only	Use dictionary service. PSCSchool Section F
17	ActsAsIfDrivenByAMotor	CR	Enumeration	n/a	n/a	Acceptable Values Only	Use dictionary service. PSCQA Section F
18	DaydreamsTooMuch	CR	Enumeration	n/a	n/a	Acceptable Values Only	Use dictionary service. PSCQA Section F
19	DistractedEasily	CR	Enumeration	n/a	n/a	Acceptable Values Only	Use dictionary service. PSCQA Section F
20	IsAfraidOfNewSituations	CR	Enumeration	n/a	n/a	Acceptable Values Only	Use dictionary service. PSCQA Section F
21	FeelsSadUnhappy	CR	Enumeration	n/a	n/a	Acceptable Values Only	Use dictionary service. PSCQA Section F
22	IsIrritableAngry	CR	Enumeration	n/a	n/a	Acceptable Values Only	Use dictionary service. PSCQA Section F

Ref #	Data Element	R CR O	Data Type	Min Len	Max Len	Restriction	Acceptable Values
23	FeelsHopeless	CR	Enumeration	n/a	n/a	Acceptable Values Only	Use dictionary service. PSCQA Section F
24	HasTroubleConcentrating	CR	Enumeration	n/a	n/a	Acceptable Values Only	Use dictionary service. PSCQA Section F
25	LessInterestInFriends	CR	Enumeration	n/a	n/a	Acceptable Values Only	Use dictionary service. PSCQA Section F
26	FightsWithOtherChildren	CR	Enumeration	n/a	n/a	Acceptable Values Only	Use dictionary service. PSCQA Section F
27	AbsentFromSchool	CR	Enumeration	n/a	n/a	Acceptable Values Only	Use dictionary service. PSCSchool Section E
28	SchoolGradesDropping	CR	Enumeration	n/a	n/a	Acceptable Values Only	Use dictionary service. PSCSchool Section E
29	IsDownOnHimOrHerself	CR	Enumeration	n/a	n/a	Acceptable Values Only	Use dictionary service. PSCQA Section F
30	VisitsTheDoctorWithDoctorFindingNothingWrong	CR	Enumeration	n/a	n/a	Acceptable Values Only	Use dictionary service. PSCQA Section F
31	HasTroubleSleeping	CR	Enumeration	n/a	n/a	Acceptable Values Only	Use dictionary service. PSCQA Section F
32	WorriesALot	CR	Enumeration	n/a	n/a	Acceptable Values Only	Use dictionary service. PSCQA Section F
33	WantsToBeWithYouMoreThanBefore	CR	Enumeration	n/a	n/a	Acceptable Values Only	Use dictionary service. PSCQA Section F
34	FeelsHeOrShesBad	CR	Enumeration	n/a	n/a	Acceptable Values Only	Use dictionary service. PSCQA Section F
35	TakesUnnecessaryRisks	CR	Enumeration	n/a	n/a	Acceptable Values Only	Use dictionary service. PSCQA Section F
36	GetsHurtFrequently	CR	Enumeration	n/a	n/a	Acceptable Values Only	Use dictionary service. PSCQA Section F
37	SeemsToBeHavingLessFun	CR	Enumeration	n/a	n/a	Acceptable Values Only	Use dictionary service. PSCQA Section F
38	ActsYoungerThanChildrenHisOrHerAge	CR	Enumeration	n/a	n/a	Acceptable Values Only	Use dictionary service. PSCQA Section F

Ref #	Data Element	R CR O	Data Type	Min Len	Max Len	Restriction	Acceptable Values
39	DoesNotListenToRules	CR	Enumeration	n/a	n/a	Acceptable Values Only	Use dictionary service. PSCQA Section F
40	DoesNotShowFeelings	CR	Enumeration	n/a	n/a	Acceptable Values Only	Use dictionary service. PSCQA Section F
41	DoesNotUnderstandOtherPeoplesFeelings	CR	Enumeration	n/a	n/a	Acceptable Values Only	Use dictionary service. PSCQA Section F
42	TeasesOthers	CR	Enumeration	n/a	n/a	Acceptable Values Only	Use dictionary service. PSCQA Section F
43	BlamesOthersForHisOrHerTroubles	CR	Enumeration	n/a	n/a	Acceptable Values Only	Use dictionary service. PSCQA Section F
45	TakesThingsThatDoNotBelongToHimOrHer	CR	Enumeration	n/a	n/a	Acceptable Values Only	Use dictionary service. PSCQA Section F
46	RefusesToShare	CR	Enumeration	n/a	n/a	Acceptable Values Only	Use dictionary service. PSCQA Section F

### C.2.2 ADDPSC\_OUTPUT

Ref #	Data Element	Data Type	R/O/CR	Min Len	Max Len
<b>Successful</b>					
1	Acknowledgement	String	R	100	500
2	SubmissionID	String	R	36	36
<b>Unsuccessful</b>					
1	ErrorCode	String	R	4	10
2	ErrorDescription	String	R	100	500

### C.2.3 XML STRUCTURE OF ADDPSC\_INPUT

```
<soapenv:Envelope xmlns:soapenv="http://schemas.xmlsoap.org/soap/envelope/"
xmlns:ns="http://b2b.dmh.lacounty.gov/EPSDT/202101"
xmlns:mes="http://b2b.dmh.lacounty.gov/EPSDT/202101/MessageContextInput"
xmlns:typ="http://b2b.dmh.lacounty.gov/EPSDT/202101/types">
  <soapenv:Header/>
  <soapenv:Body>
    <ns:AddPSC_Input>
```

```

<mes:MessageContextInput typ:ProgramID="?" />
<typ:AddPSC>
  <PSCAdministrativeData>
    <Assessment Date="?" Type="?" AdminCloseReason="?" />
    <Client ID="?" ProviderNumber="?" PractitionerReviewingNPI="?" RespondentName="?"
RespondentRelationship="?" CaregiverDeclinedToRespond="?"
CaregiverDidNotRespondToAllQuestions="?" />
  </PSCAdministrativeData>
<typ:PSCToolQ>
  <!--Optional:-->
  <ComplainsOfAchesAndPains></ComplainsOfAchesAndPains>
  <!--Optional:-->
  <SpendsMoreTimeAlone></SpendsMoreTimeAlone>
  <!--Optional:-->
  <TiresEasilyHasLittleEnergy></TiresEasilyHasLittleEnergy>
  <!--Optional:-->
  <FidgetyUnableToSitStill></FidgetyUnableToSitStill>
  <!--Optional:-->
  <HasTroubleWithTeacher></HasTroubleWithTeacher>
  <!--Optional:-->
  <LessInterestedInSchool></LessInterestedInSchool>
  <!--Optional:-->
  <ActsAsIfDrivenByAMotor></ActsAsIfDrivenByAMotor>
  <!--Optional:-->
  <DaydreamsTooMuch></DaydreamsTooMuch>
  <!--Optional:-->
  <DistractedEasily></DistractedEasily>
  <!--Optional:-->
  <IsAfraidOfNewSituations></IsAfraidOfNewSituations>
  <!--Optional:-->
  <FeelsSadUnhappy></FeelsSadUnhappy>
  <!--Optional:-->
  <IsIrritableAngry></IsIrritableAngry>
  <!--Optional:-->
  <FeelsHopeless></FeelsHopeless>
  <!--Optional:-->
  <HasTroubleConcentrating></HasTroubleConcentrating>
  <!--Optional:-->
  <LessInterestInFriends></LessInterestInFriends>
  <!--Optional:-->
  <FightsWithOtherChildren></FightsWithOtherChildren>
  <!--Optional:-->
  <AbsentFromSchool></AbsentFromSchool>
  <!--Optional:-->
  <SchoolGradesDropping></SchoolGradesDropping>
  <!--Optional:-->
  <IsDownOnHimOrHerself></IsDownOnHimOrHerself>

```

```

<!--Optional:-->
<VisitsTheDoctorWithDoctorFindingNothingWrong></VisitsTheDoctorWithDoctorFindingNothingWrong
>
  <!--Optional:-->
  <HasTroubleSleeping></HasTroubleSleeping>
  <!--Optional:-->
  <WorriesALot></WorriesALot>
  <!--Optional:-->
  <WantsToBeWithYouMoreThanBefore></WantsToBeWithYouMoreThanBefore>
  <!--Optional:-->
  <FeelsHeOrShesBad></FeelsHeOrShesBad>
  <!--Optional:-->
  <TakesUnnecessaryRisks></TakesUnnecessaryRisks>
  <!--Optional:-->
  <GetsHurtFrequently></GetsHurtFrequently>
  <!--Optional:-->
  <SeemsToBeHavingLessFun></SeemsToBeHavingLessFun>
  <!--Optional:-->
  <ActsYoungerThanChildrenHisOrHerAge></ActsYoungerThanChildrenHisOrHerAge>
  <!--Optional:-->
  <DoesNotListenToRules></DoesNotListenToRules>
  <!--Optional:-->
  <DoesNotShowFeelings></DoesNotShowFeelings>
  <!--Optional:-->
  <DoesNotUnderstandOtherPeoplesFeelings></DoesNotUnderstandOtherPeoplesFeelings>
  <!--Optional:-->
  <TeasesOthers></TeasesOthers>
  <!--Optional:-->
  <BlamesOthersForHisOrHerTroubles></BlamesOthersForHisOrHerTroubles>
  <!--Optional:-->
  <TakesThingsThatDoNotBelongToHimOrHer></TakesThingsThatDoNotBelongToHimOrHer>
  <!--Optional:-->
  <RefusesToShare></RefusesToShare>
</typ:PSCToolQ>
</typ:AddPSC>
</ns:AddPSC_Input>
</soapenv:Body>
</soapenv:Envelope>

```

## C.2.4 XML STRUCTURE OF ADDCPSC\_OUTPUT

SUCCESSFUL:

```
<s:Envelope xmlns:s="http://schemas.xmlsoap.org/soap/envelope/">
  <s:Body>
    <ns0:AddPSC_Output xmlns:ns0="http://b2b.dmh.lacounty.gov/EPSDT/202101"
      xmlns:mc="http://b2b.dmh.lacounty.gov/EPSDT/202101/MessageContextOutput"
      xmlns:t="http://b2b.dmh.lacounty.gov/EPSDT/202101/types">
      <mc:MessageContextOutput Acknowledgement="Completed successfully."/>
      <t:EPSDT t:SubmissionID=""/>
    </ns0:AddPSC_Output>
  </s:Body>
</s:Envelope>
```

UNSUCCESSFUL:

See [Appendix](#)

### C.3 Get PSC

**Definition:** The Get EPSDT PSC record operation allows Trading Partners to retrieve data from an existing active EPSDT PSC record of a client

**Use Cases:**

- # 1: Retrieve data from an existing active EPSDT PSC record of a client that has a submission ID with data type as integer.
- # 2: Retrieve data from an existing active EPSDT PSC record of a client that has a submission ID as GUID.

**Service Action:**

*GetPSC* operation if offered to satisfy the use case. The EPSDT API will perform the retrieve action.

**Precondition:**

- TP is authenticated and can provide an EPSDT service compliant input.
- An active EPSDT CANS record exists for the client.
- TP has gathered the submissionID by using the SearchPSC operation. For more information on search—visit section [C.1](#)

#### C.3.1 GETPSC\_INPUT

\* R = **Required**; CR = **ConditionallyRequired**; O = **Optional**

Ref #	Data Element	R CR O	Data Type	Min Len	Max Len	Restriction	Acceptable Values
1	ProgramID	R	String	5	5	n/a	ProgramID configured in BizTalk associated with the Digital Certificate used for authentication.
<b>EPSDT</b>							
2	SubmissionID	R	String	1	36	n/a	Either GUID or Numbers only Note: GUID consists of 36 characters broken up in to a sequence of hexadecimal numbers (0-9 and a-f) in the following format: XXXXXXXX-XXXX-XXXX-XXXX-XXXXXXXXXXXX

### C.3.2 GETPSC\_OUTPUT

Note: When a data attribute has no value, it will be omitted in the output.

Ref #	Data Element	Data Type	R/O/CR	Min Len	Max Len
1	Acknowledgement	String	R	100	500
2	SubmissionID	String	R	1	36
<b>AdministrativeData</b>					
3	TotalScore	String	R	1	3
<b>Assessment</b>					
4	Date	String	R	10	10
5	Type	String	R	1	1
6	AdminCloseReason	String	CR	1	1
<b>Client</b>					
6	ID	String	R	1	9
7	ProviderNumber	String	R	4	4
8	PractitionerReviewingNPI	String	R	10	10
9	RespondentName	String	R	1	80
10	RespondentRelationship	String	R	2	2
11	CaregiverDeclinedToRespond	String	O	n/a	n/a
12	CaregiverDidNotRespondToAllQuestions	String	O	n/a	n/a
<b>Note: The presence of the following PSCToolQs node attributes depend on the existence of data.</b>					
<b>PSCToolQ</b>					
13	ComplainsOfAchesAndPains	String	CR	n/a	n/a
14	SpendsMoreTimeAlone	String	CR	n/a	n/a
15	TiresEasilyHasLittleEnergy	String	CR	n/a	n/a
16	FidgetyUnableToSitStill	String	CR	n/a	n/a
17	HasTroubleWithTeacher	String	CR	n/a	n/a
18	LessInterestedInSchool	String	CR	n/a	n/a
19	ActsAsIfDrivenByAMotor	String	CR	n/a	n/a
20	DaydreamsTooMuch	String	CR	n/a	n/a
21	DistractedEasily	String	CR	n/a	n/a
22	IsAfraidOfNewSituations	String	CR	n/a	n/a
23	FeelsSadUnhappy	String	CR	n/a	n/a
24	IsIrritableAngry	String	CR	n/a	n/a
25	FeelsHopeless	String	CR	n/a	n/a
26	HasTroubleConcentrating	String	CR	n/a	n/a
27	LessInterestInFriends	String	CR	n/a	n/a
28	FightsWithOtherChildren	String	CR	n/a	n/a



Ref #	Data Element	Data Type	R/O/CR	Min Len	Max Len
29	AbsentFromSchool	String	CR	n/a	n/a
30	SchoolGradesDropping	String	CR	n/a	n/a
31	IsDownOnHimOrHerself	String	CR	n/a	n/a
32	VisitsTheDoctorWithDoctorFindingNothingWrong	String	CR	n/a	n/a
33	HasTroubleSleeping	String	CR	n/a	n/a
34	WorriesALot	String	CR	n/a	n/a
35	WantsToBeWithYouMoreThanBefore	String	CR	n/a	n/a
36	FeelsHeOrShelsBad	String	CR	n/a	n/a
37	TakesUnnecessaryRisks	String	CR	n/a	n/a
38	GetsHurtFrequently	String	CR	n/a	n/a
39	SeemsToBeHavingLessFun	String	CR	n/a	n/a
40	ActsYoungerThanChildrenHisOrHerAge	String	CR	n/a	n/a
41	DoesNotListenToRules	String	CR	n/a	n/a
42	DoesNotShowFeelings	String	CR	n/a	n/a
43	DoesNotUnderstandOtherPeople’SFeelings	String	CR	n/a	n/a
44	TeasesOthers	String	CR	n/a	n/a
45	BlamesOthersForHisOrHerTroubles	String	CR	n/a	n/a
46	TakesThingsThatDoNotBelongToHimOrHer	String	CR	n/a	n/a
47	RefusesToShare	String	CR	n/a	n/a
<b>Fault Schema</b>					
48	ErrorCode	String	R	4	10
49	ErrorDescription	String	R	100	500

### C.3.3 XML STRUCTURE OF GETPSC\_INPUT

```
<soapenv:Envelope xmlns:soapenv="http://schemas.xmlsoap.org/soap/envelope/"
xmlns:ns="http://b2b.dmh.lacounty.gov/EPSDT/202101"
xmlns:mes="http://b2b.dmh.lacounty.gov/EPSDT/202101/MessageContextInput"
xmlns:typ="http://b2b.dmh.lacounty.gov/EPSDT/202101/types">
  <soapenv:Header/>
  <soapenv:Body>
    <ns:GetPSC_Input>
      <mes:MessageContextInput typ:ProgramID=""/>
      <typ:EPSDT typ:SubmissionID=""/>
    </ns:GetPSC_Input>
  </soapenv:Body>
</soapenv:Envelope>
```

### C.3.4 XML STRUCTURE OF GETPSC\_OUTPUT

SUCCESSFUL:

```
<s:Envelope xmlns:s="http://schemas.xmlsoap.org/soap/envelope/">
  <s:Body>
    <ns0:GetPSC_Output xmlns:ns0="http://b2b.dmh.lacounty.gov/EPSDT/202101"
      xmlns:mc="http://b2b.dmh.lacounty.gov/EPSDT/202101/MessageContextOutput"
      xmlns:t="http://b2b.dmh.lacounty.gov/EPSDT/202101/types">
      <mc:MessageContextOutput Acknowledgement="Completed successfully."/>
      <t:PSC t:SubmissionID="">
        <t:PSCAdministrativeData TotalScore="">
          <Assessment Date="" Type=""/>
          <Client ID="" ProviderNumber="" PractitionerReviewingNPI="" RespondentName=""
            RespondentRelationship=""/>
        </t:PSCAdministrativeData>
        <t:PSCToolQ>
          <ComplainsOfAchesAndPains></ComplainsOfAchesAndPains>
          <SpendsMoreTimeAlone></SpendsMoreTimeAlone>
          <TiresEasilyHasLittleEnergy></TiresEasilyHasLittleEnergy>
          <FidgetyUnableToSitStill></FidgetyUnableToSitStill>
          <HasTroubleWithTeacher></HasTroubleWithTeacher>
          <LessInterestedInSchool></LessInterestedInSchool>
          <ActsAsIfDrivenByAMotor></ActsAsIfDrivenByAMotor>
          <DaydreamsTooMuch></DaydreamsTooMuch>
          <DistractedEasily></DistractedEasily>
          <IsAfraidOfNewSituations></IsAfraidOfNewSituations>
          <FeelsSadUnhappy></FeelsSadUnhappy>
          <IsIrritableAngry></IsIrritableAngry>
          <FeelsHopeless></FeelsHopeless>
          <HasTroubleConcentrating></HasTroubleConcentrating>
          <LessInterestInFriends></LessInterestInFriends>
          <FightsWithOtherChildren></FightsWithOtherChildren>
          <AbsentFromSchool></AbsentFromSchool>
          <SchoolGradesDropping></SchoolGradesDropping>
          <IsDownOnHimOrHerself></IsDownOnHimOrHerself>
          <VisitsTheDoctorWithDoctorFindingNothingWrong></VisitsTheDoctorWithDoctorFindingNothingWrong>
          <HasTroubleSleeping></HasTroubleSleeping>
          <WorriesALot></WorriesALot>
          <WantsToBeWithYouMoreThanBefore></WantsToBeWithYouMoreThanBefore>
          <FeelsHeOrShesBad></FeelsHeOrShesBad>
          <TakesUnnecessaryRisks></TakesUnnecessaryRisks>
          <GetsHurtFrequently></GetsHurtFrequently>
          <SeemsToBeHavingLessFun></SeemsToBeHavingLessFun>
          <ActsYoungerThanChildrenHisOrHerAge></ActsYoungerThanChildrenHisOrHerAge>
          <DoesNotListenToRules></DoesNotListenToRules>
          <DoesNotShowFeelings></DoesNotShowFeelings>
          <DoesNotUnderstandOtherPeoplesFeelings></DoesNotUnderstandOtherPeoplesFeelings>
          <TeasesOthers></TeasesOthers>
          <BlamesOthersForHisOrHerTroubles></BlamesOthersForHisOrHerTroubles>
          <TakesThingsThatDoNotBelongToHimOrHer></TakesThingsThatDoNotBelongToHimOrHer>
        </t:PSCToolQ>
      </t:PSC>
    </ns0:GetPSC_Output>
  </s:Body>
</s:Envelope>
```

```
<RefusesToShare></RefusesToShare>  
</t:PSCToolQ>  
</t:PSC>  
</ns0:GetPSC_Output>  
</s:Body>  
</s:Envelope>
```

UNSUCCESSFUL:

See [Appendix](#)

## C.4 Update PSC

**Definition:**

The Update EPSDT PSC record operation allows Trading Partners to update an existing active EPSDT PSC record linked to their own Provider Number associated with their own Program ID.

**Use Cases:**

- # 1: Update an active EPSDT PSC record for a client that does not exist in IBHIS.
- # 2: Update an active EPSDT PSC record for a client that exists in IBHIS.
- # 3: Update an existing active EPSDT PSC record of a client that has a submission ID with data type as integer.
- # 4: Update an existing active EPSDT PSC record of a client that has a submission ID as GUID.

**Service Action:**

*UpdatePSC* operation is available to satisfy the above mentioned use cases. Note that each EPSDT PSC record is identified by a unique SubmissionID associated to their ProgramID and Provider ID. Trading Partners will need to submit these IDs in order to perform an update. EPSDT Api will perform the update action.

**Precondition:**

- TP is authenticated and can provide an EPSDT service compliant input.
- TP attempted to update an EPSDT PSC record that is active and linked to any of the Provider Numbers that is associated to TP’s ProgramID.
- TP has performed a GetPSC to retrieve existing values. For more information on *Get*—visit section [C.3](#)

**Note:**

**Restriction:**

**ProviderNumber–SubmissionID association:** When a Trading Partner submits a submission ID to update an existing active PSC record, that ID must be linked to one of the Provider Numbers associated with their Program ID.

**Update behavior:** When an optional data attribute is not sent through update operation, solution will keep the existing value.

### C.4.1 UPDATEPSC\_INPUT

\* R = **Required**; CR = **ConditionallyRequired**; O = **Optional**

Ref #	Data Element	R CR O	Data Type	Min Len	Max Len	Restriction	Acceptable Values
1	ProgramID	R	String	5	5	n/a	ProgramID configured in BizTalk associated with the Digital Certificate used for authentication.
<b>PSC</b>							
2	SubmissionID	R	String	1	36	n/a	Either GUID or Numbers only

Ref #	Data Element	R CR O	Data Type	Min Len	Max Len	Restriction	Acceptable Values
							Note: GUID consists of 36 characters broken up in to a sequence of hexadecimal numbers (0-9 and a-f) in the following format: XXXXXXXX-XXXX-XXXX-XXXX-XXXXXXXXXXXX
<b>Administrative Data</b>							
<b>Client</b>							
3	ProviderNumber	R	Enumeration	4	4	Must be associated with the Program ID. Restricted to a list of approved codes.	Use dictionary service. ProviderNumber Section F
4	PractitionerReviewingNPI	CR	String	10	10	Conditionally required when existing code in [Type] is not "5"	numbers only
<b>Note: Following data attributes (Ref # 5 thru Ref # 43) should not be submitted when an existing active record has code 5 for [Type].</b>							
5	RespondentName	CR	String	10	10	Conditionally required when existing code in [Type] is not "5"	Alpha and following special characters allowed: hyphen (-), apostrophe (') and space ( )
6	RespondentRelationship	CR	Enumeration	n/a	n/a	-Acceptable Values Only -Conditionally required when existing code in [Type] is not "5"	Use dictionary service. RespondentRelationship Section F
7	CaregiverDeclinedToRespond	O	Enumeration	n/a	n/a	Acceptable Values Only	E.1.1
8	CaregiverDidNotRespondToAllQuestions	O	Enumeration	n/a	n/a	Acceptable Values Only	E.1.2
<b>Assessment</b>							

Ref #	Data Element	R CR O	Data Type	Min Len	Max Len	Restriction	Acceptable Values
9	AdminCloseReason	CR	Enumeration	n/a	n/a	Required when code "5" exists for Type for the record being updated.  Restricted to a list of approved codes.	Use dictionary service. Assessment Section F Note: Code 1, 3 or 4 accepted when existing code in Type is "5"

**Note: The following PSCToolQ node is based on these requirements.**

When Type attribute does not have code 5 and CaregiverDeclinedToRespond is 'Y' or CaregiverDidNotRespondToAllQuestions is 'Y', then the following PSCToolQ data attributes can be omitted in the submission.

However, if Type attribute does not have code 5 and CaregiverDeclinedToRespond is not 'Y' and CaregiverDidNotRespondToAllRequiredQuestions is not 'Y', then up to three of the following PSCToolQ data attributes can be omitted in the submission.

**PSCToolQ**

9	ComplainsOfAchesAndPains	CR	Enumeration	n/a	n/a	Acceptable Values Only	Use dictionary service. PSCQA Section F
10	SpendsMoreTimeAlone	CR	Enumeration	n/a	n/a	Acceptable Values Only	Use dictionary service. PSCQA Section F
11	TiresEasilyHasLittleEnergy	CR	Enumeration	n/a	n/a	Acceptable Values Only	Use dictionary service. PSCQA Section F
12	FidgetyUnableToSitStill	CR	Enumeration	n/a	n/a	Acceptable Values Only	Use dictionary service. PSCQA Section F
13	HasTroubleWithTeacher	CR	Enumeration	n/a	n/a	Acceptable Values Only	Use dictionary service. PSCSchool Section F
14	LessInterestedInSchool	CR	Enumeration	n/a	n/a	Acceptable Values Only	Use dictionary service. PSCSchool Section F
15	ActsAsIfDrivenByAMotor	CR	Enumeration	n/a	n/a	Acceptable Values Only	Use dictionary service. PSCQA Section F
16	DaydreamsTooMuch	CR	Enumeration	n/a	n/a	Acceptable Values Only	Use dictionary service. PSCQA Section F
17	DistractedEasily	CR	Enumeration	n/a	n/a	Acceptable Values Only	Use dictionary service. PSCQA Section F

Ref #	Data Element	R CR O	Data Type	Min Len	Max Len	Restriction	Acceptable Values
18	IsAfraidOfNewSituations	CR	Enumeration	n/a	n/a	Acceptable Values Only	Use dictionary service. PSCQA Section F
19	FeelsSadUnhappy	CR	Enumeration	n/a	n/a	Acceptable Values Only	Use dictionary service. PSCQA Section F
20	IsIrritableAngry	CR	Enumeration	n/a	n/a	Acceptable Values Only	Use dictionary service. PSCQA Section F
21	FeelsHopeless	CR	Enumeration	n/a	n/a	Acceptable Values Only	Use dictionary service. PSCQA Section F
22	HasTroubleConcentrating	CR	Enumeration	n/a	n/a	Acceptable Values Only	Use dictionary service. PSCQA Section F
23	LessInterestInFriends	CR	Enumeration	n/a	n/a	Acceptable Values Only	Use dictionary service. PSCQA Section F
24	FightsWithOtherChildren	CR	Enumeration	n/a	n/a	Acceptable Values Only	Use dictionary service. PSCQA Section F
25	AbsentFromSchool	CR	Enumeration	n/a	n/a	Acceptable Values Only	Use dictionary service. PSCSchool Section F
26	SchoolGradesDropping	CR	Enumeration	n/a	n/a	Acceptable Values Only	Use dictionary service. PSCSchool Section F
27	IsDownOnHimOrHerself	CR	Enumeration	n/a	n/a	Acceptable Values Only	Use dictionary service. PSCQA Section F
28	VisitsTheDoctorWithDoctorFindingNothingWrong	CR	Enumeration	n/a	n/a	Acceptable Values Only	Use dictionary service. PSCQA Section F
29	HasTroubleSleeping	CR	Enumeration	n/a	n/a	Acceptable Values Only	Use dictionary service. PSCQA Section F
30	WorriesALot	CR	Enumeration	n/a	n/a	Acceptable Values Only	Use dictionary service. PSCQA Section F
31	WantsToBeWithYouMoreThanBefore	CR	Enumeration	n/a	n/a	Acceptable Values Only	Use dictionary service. PSCQA Section F
32	FeelsHeOrShesBad	CR	Enumeration	n/a	n/a	Acceptable Values Only	Use dictionary service. PSCQA Section F
33	TakesUnnecessaryRisks	CR	Enumeration	n/a	n/a	Acceptable Values Only	Use dictionary service. PSCQA Section F

Ref #	Data Element	R CR O	Data Type	Min Len	Max Len	Restriction	Acceptable Values
34	GetsHurtFrequently	CR	Enumeration	n/a	n/a	Acceptable Values Only	Use dictionary service. PSCQA Section F
35	SeemsToBeHavingLessFun	CR	Enumeration	n/a	n/a	Acceptable Values Only	Use dictionary service. PSCQA Section F
36	ActsYoungerThanChildrenHisOrHerAge	CR	Enumeration	n/a	n/a	Acceptable Values Only	Use dictionary service. PSCQA Section F
37	DoesNotListenToRules	CR	Enumeration	n/a	n/a	Acceptable Values Only	Use dictionary service. PSCQA Section F
38	DoesNotShowFeelings	CR	Enumeration	n/a	n/a	Acceptable Values Only	Use dictionary service. PSCQA Section F
39	DoesNotUnderstandOtherPeoplesFeelings	CR	Enumeration	n/a	n/a	Acceptable Values Only	Use dictionary service. PSCQA Section F
40	TeasesOthers	CR	Enumeration	n/a	n/a	Acceptable Values Only	Use dictionary service. PSCQA Section F
41	BlamesOthersForHisOrHerTroubles	CR	Enumeration	n/a	n/a	Acceptable Values Only	Use dictionary service. PSCQA Section F
42	TakesThingsThatDoNotBelongToHimOrHer	CR	Enumeration	n/a	n/a	Acceptable Values Only	Use dictionary service. PSCQA Section F
43	RefusesToShare	CR	Enumeration	n/a	n/a	Acceptable Values Only	Use dictionary service. PSCQA Section F

#### C.4.2 UPDATEPSC\_OUTPUT

Ref #	Data Element	Data Type	Required	Min Len	Max Len
<b>Successful</b>					
1	Acknowledgement	String	Yes	100	500
2	SubmissionID	String	Yes	1	36
<b>Unsuccessful</b>					
3	ErrorCode	String	Yes	4	10
4	ErrorDescription	String	Yes	100	500



### C.4.3 XML STRUCTURE OF UPDATEPSC\_INPUT

```

<soapenv:Envelope xmlns:soapenv="http://schemas.xmlsoap.org/soap/envelope/"
xmlns:ns="http://b2b.dmh.lacounty.gov/EPSDT/202101"
xmlns:mes="http://b2b.dmh.lacounty.gov/EPSDT/202101/MessageContextInput"
xmlns:typ="http://b2b.dmh.lacounty.gov/EPSDT/202101/types">
  <soapenv:Header/>
  <soapenv:Body>
    <ns:UpdatePSC_Input>
      <mes:MessageContextInput typ:ProgramID=""/>
      <typ:UpdatePSC typ:SubmissionID="">
        <PSCAdministrativeData>
          <Client ProviderNumber="" PractitionerReviewingNPI="" RespondentName="" RespondentRelationship=""
CaregiverDeclinedToRespond="" CaregiverDidNotRespondToAllQuestions=""/>
          <Assessment AdminCloseReason=""/>
        </PSCAdministrativeData>
        <typ:PSCToolQ>
          <!--Optional:-->
          <ComplainsOfAchesAndPains></ComplainsOfAchesAndPains>
          <!--Optional:-->
          <SpendsMoreTimeAlone></SpendsMoreTimeAlone>
          <!--Optional:-->
          <TiresEasilyHasLittleEnergy></TiresEasilyHasLittleEnergy>
          <!--Optional:-->
          <FidgetyUnableToSitStill></FidgetyUnableToSitStill>
          <!--Optional:-->
          <HasTroubleWithTeacher></HasTroubleWithTeacher>
          <!--Optional:-->
          <LessInterestedInSchool></LessInterestedInSchool>
          <!--Optional:-->
          <ActsAsIfDrivenByAMotor></ActsAsIfDrivenByAMotor>
          <!--Optional:-->
          <DaydreamsTooMuch></DaydreamsTooMuch>
          <!--Optional:-->
          <DistractedEasily></DistractedEasily>
          <!--Optional:-->
          <IsAfraidOfNewSituations></IsAfraidOfNewSituations>
          <!--Optional:-->
          <FeelsSadUnhappy></FeelsSadUnhappy>
          <!--Optional:-->
          <IsIrritableAngry></IsIrritableAngry>
          <!--Optional:-->
          <FeelsHopeless></FeelsHopeless>
          <!--Optional:-->
          <HasTroubleConcentrating></HasTroubleConcentrating>
          <!--Optional:-->
          <LessInterestInFriends></LessInterestInFriends>
          <!--Optional:-->
          <FightsWithOtherChildren></FightsWithOtherChildren>
          <!--Optional:-->
          <AbsentFromSchool></AbsentFromSchool>
        </typ:PSCToolQ>
      </typ:UpdatePSC>
    </ns:UpdatePSC_Input>
  </soapenv:Body>
</soapenv:Envelope>

```

```

<!--Optional:-->
<SchoolGradesDropping></SchoolGradesDropping>
<!--Optional:-->
<IsDownOnHimOrHerself></IsDownOnHimOrHerself>
<!--Optional:-->
<VisitsTheDoctorWithDoctorFindingNothingWrong></VisitsTheDoctorWithDoctorFindingNothingWrong>
<!--Optional:-->
<HasTroubleSleeping></HasTroubleSleeping>
<!--Optional:-->
<WorriesALot></WorriesALot>
<!--Optional:-->
<WantsToBeWithYouMoreThanBefore></WantsToBeWithYouMoreThanBefore>
<!--Optional:-->
<FeelsHeOrShelsBad></FeelsHeOrShelsBad>
<!--Optional:-->
<TakesUnnecessaryRisks></TakesUnnecessaryRisks>
<!--Optional:-->
<GetsHurtFrequently></GetsHurtFrequently>
<!--Optional:-->
<SeemsToBeHavingLessFun></SeemsToBeHavingLessFun>
<!--Optional:-->
<ActsYoungerThanChildrenHisOrHerAge></ActsYoungerThanChildrenHisOrHerAge>
<!--Optional:-->
<DoesNotListenToRules></DoesNotListenToRules>
<!--Optional:-->
<DoesNotShowFeelings></DoesNotShowFeelings>
<!--Optional:-->
<DoesNotUnderstandOtherPeoplesFeelings></DoesNotUnderstandOtherPeoplesFeelings>
<!--Optional:-->
<TeasesOthers></TeasesOthers>
<!--Optional:-->
<BlamesOthersForHisOrHerTroubles></BlamesOthersForHisOrHerTroubles>
<!--Optional:-->
<TakesThingsThatDoNotBelongToHimOrHer></TakesThingsThatDoNotBelongToHimOrHer>
<!--Optional:-->
<RefusesToShare></RefusesToShare>
</typ:PSCToolQ>
</typ:UpdatePSC>
</ns:UpdatePSC_Input>
</soapenv:Body>
</soapenv:Envelope>

```

#### C.4.4 XML STRUCTURE OF UPDATEPSC\_OUTPUT

SUCCESSFUL:

```

<s:Envelope xmlns:s="http://schemas.xmlsoap.org/soap/envelope/">
  <s:Body>
    <ns0:UpdatePSC_Output xmlns:ns0="http://b2b.dmh.lacounty.gov/EPSTDT/202101"
      xmlns:mc="http://b2b.dmh.lacounty.gov/EPSTDT/202101/MessageContextOutput"
      xmlns:t="http://b2b.dmh.lacounty.gov/EPSTDT/202101/types">

```

2022 © Los Angeles County | Department of Mental Health | CIOB | All rights reserved

```
<mc:MessageContextOutput Acknowledgement="Completed successfully."/>
<t:EPSDT t:SubmissionID=""/>
</ns0:UpdatePSC_Output>
</s:Body>
</s:Envelope>
```

UNSUCCESSFUL:

See [Appendix](#)

## C.5 Delete PSC

**Definition:**

The Delete PSC operation allows Trading Partners to remove an active existing EPSDT PSC record of a client that is linked to any of the Provider Numbers that is associated with TP’s Program ID.

**Use Cases:**

- # 1: Delete an existing active EPSDT PSC record for a client that TP didn’t intend to create.
- # 2: Delete an existing active EPSDT PSC record for a client that TP created with erroneous entries that can’t be corrected through update operation.
- # 3: Delete an existing active EPSDT PSC record of a client that has a submission ID with data type as integer.
- # 4: Delete an existing active EPSDT PSC record of a client that has a submission ID as GUID.

**Service Action:**

DeletePSC operation is available to satisfy the above mentioned use cases. EPSDT Api will perform the delete action.

**Precondition:**

- TP is authenticated and can provide an EPSDT service compliant input.
- TP attempted to update an EPSDT PSC record that is active and linked to any of the Provider Numbers that is associated to TP’s ProgramID.

### C.5.1 DELETEPSC\_INPUT

\* R = Required; CR = ConditionallyRequired; O = Optional

Ref #	Data Element	R CR O	Data Type	Min Len	Max Len	Restriction	Acceptable Values
1	ProgramID	R	String	5	5	n/a	ProgramID configured in BizTalk associated with the Digital Certificate used for authentication.
<b>EPSDT</b>							
2	SubmissionID	R	String	1	36	n/a	Either GUID or Numbers only Note: GUID consists of 36 characters broken up in to a sequence of hexadecimal numbers (0-9 and a-f) in the following format: XXXXXXXX-XXXX-XXXX-XXXX-XXXXXXXXXXXX

### C.5.2 DELETEPSC\_OUTPUT

Ref #	Data Element	Data Type	R/O/CR	Min Len	Max Len
<b>Successful</b>					
1	Acknowledgement	String	R	100	500
2	SubmissionID	String	R	1	36
<b>Unsuccessful</b>					

1	ErrorCode	String	R	4	10
2	ErrorDescription	String	R	100	500

### C.5.3 XML STRUCTURE OF DELETEPSC\_INPUT

```
<soapenv:Envelope xmlns:soapenv="http://schemas.xmlsoap.org/soap/envelope/"
xmlns:ns="http://b2b.dmh.lacounty.gov/EPSDT/202101"
xmlns:mes="http://b2b.dmh.lacounty.gov/EPSDT/202101/MessageContextInput"
xmlns:typ="http://b2b.dmh.lacounty.gov/EPSDT/202101/types">
  <soapenv:Header/>
  <soapenv:Body>
    <ns>DeletePSC_Input>
      <mes:MessageContextInput typ:ProgramID=""/>
      <typ:EPSDT typ:SubmissionID=""/>
    </ns>DeletePSC_Input>
  </soapenv:Body>
</soapenv:Envelope>
```

### C.5.4 XML STRUCTURE OF DELETEPSC\_OUTPUT

SUCCESSFUL:

```
<s:Envelope xmlns:s="http://schemas.xmlsoap.org/soap/envelope/">
  <s:Body>
    <ns0>DeletePSC_Output xmlns:ns0="http://b2b.dmh.lacounty.gov/EPSDT/202101"
xmlns:mc="http://b2b.dmh.lacounty.gov/EPSDT/202101/MessageContextOutput"
xmlns:t="http://b2b.dmh.lacounty.gov/EPSDT/202101/types">
      <mc:MessageContextOutput Acknowledgement="Record deleted successfully."/>
      <t:EPSDT t:SubmissionID=""/>
    </ns0>DeletePSC_Output>
  </s:Body>
</s:Envelope>
```

UNSUCCESSFUL:

See [Appendix](#)

## D. Error Handling

Following table lists the most common errors along with reasons and corrective actions.

Error Code	Operation	Error Message	Reason	Corrective Action
<b>s:Client</b>	All operations	Authorization failed. Unauthorized access to this LACDMH web service is prohibited.	ProgramID not associated with the digital certificate used.	ProgramID tied to the TP's digital certificate needs to be used.
<b>-1000</b>	All operations.	<h2>403 - Forbidden: Access is denied.</h2><h3>You do not have permission to view this directory or page using the credentials that you supplied.</h3>	Digital certificate missing or wrong endpoint.	Install and set up the LAC DMH issued digital certificate or check if the correct endpoint is used for WSDL.
<b>-1000</b>	All operations	The '<data-attribute-name>' attribute has an invalid value according to its data type.	Either invalid value or no value submitted for the stated data attribute.	Enter the acceptable valid value.
<b>-1000</b>	All operations.	The <name of the data attribute> attribute is not declared.	Submitted REQUEST did not conform to the expected xml structure based on the wsdl.	Verify the xml structure is correct by EPSDT Services wsdl definition (update the definition if needed), remove the element(s) as necessary and re-submit the call.
<b>-1000</b>	All operations	The required attribute <name of the data attribute> is missing.	Submitted REQUEST does not contain the required data attribute specified.	Enter the required data attribute with a valid value.
<b>-1000</b>	All operations.	Details: The element <name of the element> in namespace <namespace address> has invalid child element <name of the child element> in namespace <namespace address>. List of possible elements expected: <name of the element> in namespace <namespace address>	Submitted REQUEST did not conform to the expected structure based on the EPSDT wsdl.	Verify the xml structure is correct by EPSDT Services wsdl definition (update the definition if needed), remove and add any elements as necessary and re-submit the call.

Error Code	Operation	Error Message	Reason	Corrective Action
-1000	All operations.	Details: The <name of the data attribute> attribute is invalid - The value <entered value> is invalid according to its datatype	The Enumeration constraint failed. Submitted value is not found in the acceptable list of values (dictionary).	Enter a value from the acceptable list of values (dictionary).
-1000	All operations.	Details: The <name of the data attribute> attribute is invalid - The value <entered value> is invalid according to its datatype <data type>	The actual length is greater than the MaxLength value. Length of submitted value is longer than the allowed maximum length.	Enter a value that is within the maximum length.
-1000	All operations.	Details: The <name of the data attribute> attribute is invalid - The value <entered value> is invalid according to its datatype.	The actual length is not equal to the specified length. Submitted value is not equal to the specified fixed length--such as: Provider Number, NPI	Enter a value that conforms to the fixed length.
-1000	All operations.	Details: The <name of the data attribute> attribute is invalid - The value <entered value> is invalid according to its datatype.	The Pattern constraint failed. Submitted data attribute value has characters not allowed	Check the submitted value to verify it conforms to the data type/format/restriction applied by EPSDT Services
-1000	All operations	Acceptable <name of the data attribute> values are <valid values>	Submitted value is not found in the acceptable list of values (dictionary).	Enter a value from the acceptable list of values (dictionary).
-1000	All operations	The source was not found, but some or all event logs could not be searched. To create the source, you need permission to read all event logs to make sure that the new source name is unique. Inaccessible logs: Security.	Digital Certificate is corrupted and/or DMH BizTalk profile is corrupted.	Contact DMH by opening a Heat Ticket.
-1000	Get and Search operations	Record not found.	No match found.	If TP is affirmative that a result/match should be returned, then contact DMH (open a Heat Ticket providing REQUEST and RESPONSE xmls).

Error Code	Operation	Error Message	Reason	Corrective Action
-1000	Add operation	Date should be between 2018-07-01 and todays date.	Assessment Date is not following the business rule.	Make sure submitted assessment date follows the rules below: <ul style="list-style-type: none"> <li>•Must be equal to or after 2018-07-01</li> <li>•Cannot be a future date</li> </ul>
-1000	Add and Update PSC operations	Incomplete fields, out of 35 questions only three fields can be blank.	More than three (3) PSCToolQ questions are left blank in the input.	Enter values for at least 32 PSCToolQ attributes.
-1000	Add CANS operation	The primary CaregiverReourcesAndNeeds is required when HasCaregiver = Y	Data for CaregiverReourcesAndNeeds node is required when HasCaregiver is equal to 'Y'.	Enter values for all the attributes in primary CaregiverReourcesAndNeeds node.
-1000	Add CANS operation	At least 1 field is required to be filled out when sending a 'n' set of CaregiverReourcesAndNeeds Note: Where n= 2,3 or 4	Data for 2 <sup>nd</sup> , 3 <sup>rd</sup> or 4 <sup>th</sup> set of CaregiverReourcesAndNeeds node is required.	Enter values for at least one attribute in CaregiverReourcesAndNeeds node.
-1000	Add CANS Add PSC Update CANS Update PSC operations	ProgramID mismatch.	ProviderNumber value is not associated with ProgramID.	Enter a valid provider number from the list that is associated to the ProgramID.
-1000	Add CANS Add PSC Update CANS Update PSC operations	Invalid Provider Number.	ProviderNumber value is not a valid input according to data type.	Enter a valid provider number from the list that is associated to the ProgramID.
-1000	Add CANS Add PSC Update CANS Update PSC operations	The attribute 'HasCaregiver' is not required.	Assessment Type code is 5.	Follow the conditions for Assessment Type codes.



Error Code	Operation	Error Message	Reason	Corrective Action
<b>-1000</b>	Add CANS Add PSC operations	Duplicate record identified. Transaction cancelled.	Submission contains the same provider and same assessment type and same assessment date of an active existing record.	Modify the submission to avoid duplicate record creation.

## E. Acceptable Values Only

### E.1. ENUMERATIONS

#### E.1.1 CAREGIVERDECLINEDTORESPOND

Y  
N

#### E.1.2 CAREGIVERDIDNOTRESPONDTOALLQUESTIONS

Y  
N

#### E.1.3 POTENTIALLYTRAUMATICADVERSECHILDHOODEXP

Y  
N

## F. Dictionary Service

Some dictionaries are not embedded in the WSDL since these dictionaries tend to update more often. A solution is much needed so that a change in the dictionary will not require a WSDL change. As a result DMH implemented a dictionary values lookup solution called 'Dictionary Service' so that Trading Partners can get the acceptable values for certain data attribute using this Dictionary Service.

The enumerated values for the following data attributes can be retrieved through Dictionary Service:

- CANSQA (Enter CANSQA to retrieve the values)
- CANSSDQA (Enter CANSSDQA to retrieve the values)
- CANSCRQA (Enter CANSCRQA to retrieve the values)
- PSCQA (Enter PSCQA to retrieve the values)
- PSCSchool (Enter PSCSchool to retrieve the values)
- Assessment (Enter Assessment to retrieve the values)
- HasCaregiver (Enter HasCaregiver to retrieve the values)
- RespondentRelationship (Enter RespondentRelationship to retrieve values)
- CaregiverRelationship (Enter CaregiverRelationship to retrieve values)
- ContributorRelationship (Enter ContributorRelationship to retrieve values)
- ProviderNumber (Enter ProviderNumber to retrieve values)
- AdminCloseReason (Enter AdminCloseReasonCANS to retrieve CANS and AdminCloseReasonPSC to retrieve PSC values)

Follow the steps below:

Step #	Action
Step # 1	Load the Dictionary Service WSDL from the following URL: <a href="https://b2b.dmh.lacounty.gov/DictionaryService/DictionaryServiceInterface.svc?singlewsdl">https://b2b.dmh.lacounty.gov/DictionaryService/DictionaryServiceInterface.svc?singlewsdl</a>
Step # 2	Submit 'EPSDT' for the 'Service'.
Step # 3	Submit the suggested code listed above in 'Type' to get the enumerated list for a specific data attribute or leave 'Type' blank to get all dictionaries for EPSDT data attributes available through Dictionary Service.
Step # 4	Submit the call.
Step # 5	Acceptable values will be returned and can be utilized for submission to the EPSDT service.

## G. Client Service

When the client is an existing IBHIS client, DMH expects Trading Partners to retrieve necessary information from IBHIS to submit to EPSDT. Client Service solution can be utilized to gather the following information from IBHIS (provided that TP already has necessary access):

### ClientID

TP can perform a client search by *SearchClient* call to retrieve the ClientID (IBHIS client ID). Then use this ID in *GetClientDetails* call to get other demographic information from IBHIS.

For more information on Client Service check the following DMH website pages:

[http://lacdmh.lacounty.gov/hipaa/IBHIS\\_EDI\\_Technical\\_Specifications.htm](http://lacdmh.lacounty.gov/hipaa/IBHIS_EDI_Technical_Specifications.htm)

## Appendix

### WSDL LOCATIONS

- **WSDL:**

LACDMH EPSDT WSDL URLs are as follows-

-TST\_WSDL (For Release Candidate (RC) and TP vendors to build the new features of WSDL)  
<https://b2btst.dmh.lacounty.gov/EPSDTService/EPSDTServiceInterface.svc?SingleWsdI>

-QA\_WSDL (For Testing and Certification)  
<https://b2bqa.dmh.lacounty.gov/EPSDTService/EPSDTServiceInterface.svc?SingleWsdI>

-PROD\_WSDL (For Production use)  
<https://b2b.dmh.lacounty.gov/EPSDTService/EPSDTServiceInterface.svc?SingleWsdI>

### XML STRUCTURE OF UNSUCCESSFUL RESPONSE:

#### Example-1:

```
<s:Envelope xmlns:s="http://schemas.xmlsoap.org/soap/envelope/">
  <s:Body>
    <s:Fault>
      <faultcode>s:Client</faultcode>
      <faultstring xml:lang="en-US">Message will vary</faultstring>
      <detail>
        <Error xmlns="http://b2b.dmh.lacounty.gov/entity/fault" xmlns:i="http://www.w3.org/2001/XMLSchema-instance">
          <ErrorCode>Code will vary</ErrorCode>
          <ErrorDescription>Message will vary</ErrorDescription>
        </Error>
      </detail>
    </s:Fault>
  </s:Body>
</s:Envelope>
```

#### Example-2:

```
<s:Envelope xmlns:s="http://schemas.xmlsoap.org/soap/envelope/">
  <s:Body>
    <ns0:AddCANS_Output xmlns:ns0="http://b2b.dmh.lacounty.gov/EPSDT/202101"
      xmlns:mc="http://b2b.dmh.lacounty.gov/EPSDT/202101/MessageContextOutput"
      xmlns:t="http://b2b.dmh.lacounty.gov/EPSDT/202101/types">
      <mc:MessageContextOutput>
        <Error ErrorCode=" Code will vary" ErrorDescription="Message will vary"/>
      </mc:MessageContextOutput>
      <t:EPSDT/>
    </ns0:AddCANS_Output>
  </s:Body>
</s:Envelope>
```

Example-3:

```
<s:Envelope xmlns:s="http://schemas.xmlsoap.org/soap/envelope/">
  <s:Body>
    <s:Fault>
      <faultcode> Code will vary </faultcode>
      <faultstring xml:lang="en-US"> Message will vary faultstring>
    </s:Fault>
  </s:Body>
</s:Envelope>
```

SUMMARY OF CHANGES IN VERSION 202101

Operation(s) Items Section	Description of Change(s)
B.2.2, C.2.2	<i>SubmissionID minL and maxL columns have been updated.</i>
B.3.1, B.4.1, B.5.1, C.3.1, C.4.1, C.5.1	<i>SubmissionID data type, minL, maxL and AcceptableValues columns have been updated.</i>
B.1.2, B.3.2, B.4.2, B.5.2, C.1.2, C.3.2, C.4.2, C.5.2	<i>SubmissionID maxL column has been updated.</i>
B.1, B.2 , B.3 B.4, B.5, C.1 C.2, C.3, C.4, C.5	<i>The context has been updated.</i>
B.2.1, C.2.1	<i>Ref # 6 is updated. New data attribute information added in Ref # 4.</i>
B.4.1,	<i>Ref # 3 is updated. New data attribute information added in Ref # 11.</i>
C.4.1	<i>Ref # 3 is updated. New data attribute information added in Ref # 9.</i>
B.3.2	<i>New data attribute information added in Ref # 5.</i>
C.3.2	<i>New data attribute information added in Ref # 6.</i>
B.2.1	<i>A note added before Ref # 7. From Ref # 7 thru Ref # 114- all previously marked 'R' items have been re-marked as CR.</i>
C.2.1	<i>A note added before Ref # 7. From Ref # 7 and Ref # 8- have been re-marked as CR. The following have been marked as CR and Restriction column is updated: Date Type ID ProviderNumber PractitionerReviewingNPI RespondentName RespondentRationship  The note after Ref#10 has been updated.</i>
B.4.1	<i>A note added before Ref # 5. From Ref # 5 thru Ref # 111- all previously marked 'R' items have been re-marked as CR.</i>
C.4.1	<i>A note added before Ref # 5. Ref # 5 and Ref # 6- have been re-marked as CR. The following have been marked as CR and Restriction column is updated: PractitionerReviewingNPI RespondentName RespondentRationship  The note after Ref # 9 has been updated.</i>
B.3.2, C.3.2	<i>A note has been added.</i>

Operation(s) Items Section	Description of Change(s)
D	<i>New error messages have been added to the list.</i>
F	<i>A line added for ProviderNumber, AdminCloseReason values.</i>
All XML samples	<i>The sections have been renamed from 'Sample' to 'Structure'. Unsuccessful response structure are moved to 'Appendix' section.</i>

| End of the Document |