

▶▶ 2019 LACDMH Provider Directory

Locations of Publicly Funded Mental Health Services
in Los Angeles County

Provider Directory - 2019

Locations of Publicly Funded Mental Health Services in the County of Los Angeles

The 2019 Provider Directory of Publicly Funded Mental Health Providers is a service location guide for mental health services. The Directory lists services available at Psychiatric Inpatient and Outpatient Short Doyle/Medi-Cal Facilities, Community Outreach, and Residential Facilities. The Provider Directory does not list service locations of Outpatient Fee-For-Service network providers.

The Provider Directory lists Provider Name, Address, Phone Number, Hours of Operation, Types of Specialty Mental Health Services (SMHS), Age Groups Served, Languages/Cultures, Provider Numbers, and Non-Governmental Agency (NGA) Designation. Providers are listed alphabetically within each Organizational classification such as 24 Hour/Residential, Community Outreach, Crisis Services, Day Services, Juvenile Justice, and Outpatient. The Provider Directory is a resource to search for service providers in areas nearest to clients and providers. Providers are listed alphabetically by name and the primary mode of service.

The Providers listed in the Provider Directory can also be located on the internet using the Online DMH Provider Locator at: <http://maps.lacounty.gov/dmhSL/>. To use the Online DMH provider Locator, type the complete address of your location in the website address window and click on "Search." The Online DMH Provider Locator will show the nearest locations on the map on the left side of the screen. Also shown will be the distance from your "Search" location and driving directions. Information on the Online Provider Locator can be translated into 90 or more languages.

In 2013, the LACDMH Service Area Provider Directories were revised to include the category of **cultures**. The new category now reads as **languages/cultures**. This additional highlights information on culturally and linguistically competent mental health services offered at service locations within our system of care. The listing of services under the category of **languages/cultures** aims to facilitate the ease with which consumers, family members, community members, and other stakeholders can locate mental health services that accommodate their individual preferences and needs. The Directories are also a resource to staff when seeking providers with cultural and linguistic competencies. Additional information on the definition and elements of culture and the National Culturally and Linguistically Appropriate Services (CLAS) Standards can be found at the US Department of Health and Human Services webpage on CLAS at: <https://www.thinkculturalhealth.hhs.gov/pdfs/EnhancedCLASStandardsBlueprint.pdf>

Age-Group Served by Providers: The age-groups served by providers are: Child, TAY (Transitional Age Youth), Adult, and Older Adult. Providers serving Children serve consumers between the ages of 0 and 17. Providers serving TAY serve consumers between the ages of 16 and 25. Providers serving Adults serve consumers between the ages of 18 and 59. Providers serving Older Adults serve consumers 60 years of older.

Contact Us: Every effort is made to ensure the information in the Service Area Provider Directory is accurate and current. However, information changes frequently and the Program Support Bureau, Quality Improvement Division, Data-GIS Unit will make the best effort to ensure the

For first time visit and/or new referrals, please contact provider. To obtain Mental Health Information and Services confidentially, please call the 24/7 ACCESS Center Hotline at 1-800-854-7771. (For TDD-TTY, call 1-866-735-2922.) To schedule interpreter services for the hearing impaired (American Sign Language-ASL), please call the 24/7 ACCESS Center Hotline. *MHS refers to individual/group therapy and collateral services. Provider: DMH = Directly-Operated Facility; NGA = Non-Governmental Agency (Contractor); FFS = Fee-for-Service.

Provider Directory - 2019
Locations of Publicly Funded Mental Health Services in the County of Los Angeles

information is accurate and current. **Corrections or questions pertaining to the provider information contained in this directory can also be emailed to:**

ProviderDirectory@dmh.lacounty.gov

This Provider Directory can be downloaded from the website at:

<http://psbqi.dmh.lacounty.gov/providerdirectory.htm>

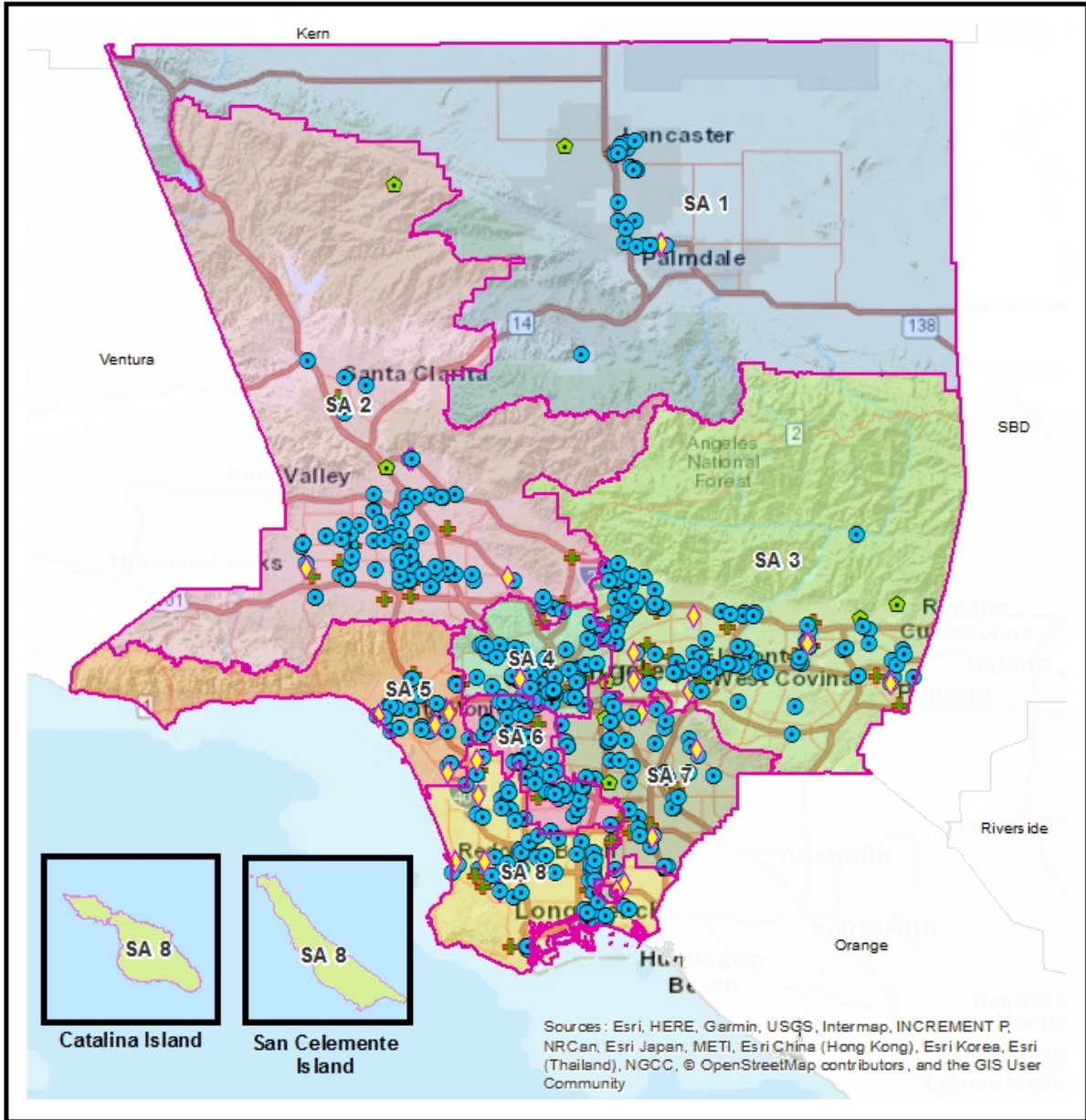
For first time visit and/or new referrals, please contact provider. To obtain Mental Health Information and Services confidentially, please call the 24/7 ACCESS Center Hotline at 1-800-854-7771. (For TDD-TTY, call 1-866-735-2922.) To schedule interpreter services for the hearing impaired (American Sign Language-ASL), please call the 24/7 ACCESS Center Hotline. *MHS refers to individual/group therapy and collateral services. Provider: DMH = Directly-Operated Facility; NGA = Non-Governmental Agency (Contractor); FFS = Fee-for-Service.

Overview Map



Mental Health Service Providers Los Angeles County Department of Mental Health

LOS ANGELES COUNTY
DEPARTMENT OF
MENTAL HEALTH
hope. recovery. wellbeing.

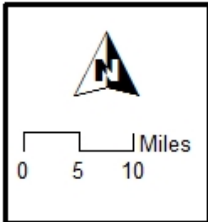


Provider Type:

	24 HOUR RESIDENTIAL
	CRISIS SERVICES
	JUVENILE JUSTICE
	OUTPATIENT

DMH Service Area:

	SA 1		SA 5
	SA 2		SA 6
	SA 3		SA 7
	SA 4		SA 8



Note:
Data Source:
Provider data from DMH:
PSB - Quality Improvement Division
Geographic data from eGIS
Repository.
All rights reserved.
Tuesday, March 27, 2018

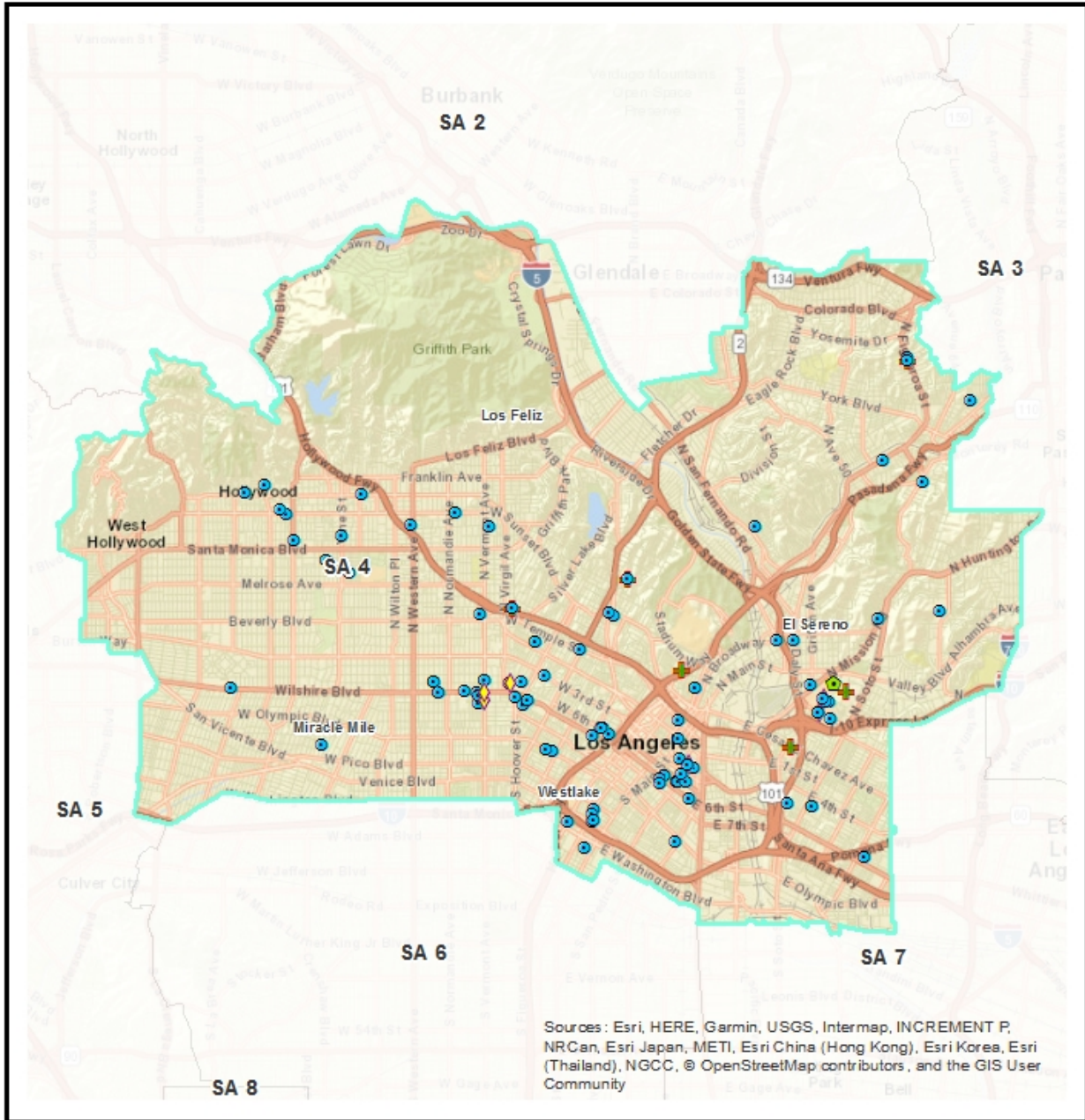


Mental Health Service Providers

Service Area 4

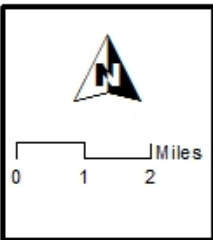
Los Angeles County Department of Mental Health

LOS ANGELES COUNTY
DEPARTMENT OF
MENTAL HEALTH
hope. recovery. wellbeing.



Provider Type:

- 24 HOUR RESIDENTIAL
- CRISIS SERVICES
- JUVENILE JUSTICE
- OUTPATIENT



Note:
Data Source:
Provider data from DMH:
PSB - Quality Improvement Division
Geographic data from eGIS
Repository.
All rights reserved.

Tuesday, March 27, 2018

Service Area 4

**1900 1900 LA CO MENTAL HEALTH ADMIN
550 S VERMONT AVENUE
LOS ANGELES, CA 90020-1912**

Phone: 213-351-1335

Hours of Operation: Call for Hours

Accepting Beneficiaries: No

Accessible By:

Provider: DO

Supervisory District: 1

Age Group Served: All Ages

Languages: English,

Cultures:

Programs/Services:

ADA Facility: No

Website: www.dmh.lacounty.gov

Email:

List of Practitioners

Not Available

Service Area 4

**19A1 19A1 ST ANNE'S STRTP
155 N OCCIDENTAL BLVD
LOS ANGELES, CA 90026-4641**

Phone: 213-381-2931

Hours of Operation: Mon - Fri 9:00 AM - 7:00 PM

Accepting Beneficiaries: Yes

Accessible By:

Provider: NGA

Supervisory District: 1

Age Group Served: All Ages

Languages: English,

Cultures:

Programs/Services:

ADA Facility: No

Website: www.stannes.org

Email:

List of Practitioners

Not Available

Service Area 4

19B6 19B6 Corner of Hope
500 S. San Pedro Street
Los Angeles, CA 90013

Phone: (213) 285-4260

Hours of Operation: MON - FRI, 8 AM - 5 PM

Accepting Beneficiaries: Yes

Accessible By: Phone / Walk-Ins

Provider:

Supervisory District: 1

Age Group Served: All Ages

Languages: Arabic, Spanish,

Cultures: Co-occurring Substance Use Disorders, Disabilities Special Needs, Homeless Housing, Race Ethnicity, Spirituality, Trauma, Under Represented Populations,

Programs/Services:

ADA Facility: Yes

Website: www.jwchinstitute.org

Email:

List of Practitioners

Not Available

Service Area 4

7170 7170 DMH DPSS CO LOCATED PRGM COS
"550 S. VERMONT AVE ., 11TH FL."
LOS ANGELES, CA 90020-9998

Phone: 213-639-6777

Hours of Operation: Call for Hours

Accepting Beneficiaries: No

Accessible By:

Provider: DO

Supervisory District: 1

Age Group Served: All Ages

Languages: English,

Cultures:

Programs/Services:

ADA Facility: No

Website: www.dmh.lacounty.gov

Email:

List of Practitioners

Not Available

Service Area 4

**7171 7171 COUNTYWIDE CHILDRENS SERVICES
600 S COMMONWEALTH AVENUE 2ND FL
LOS ANGELES, CA 90005-4001**

Phone: 213-739-2334

Hours of Operation: 8:00am - 5:00pm

Accepting Beneficiaries: No

Accessible By:

Provider: DO

Supervisory District: 1

Age Group Served: All Ages

Languages: English,

Cultures:

Programs/Services:

ADA Facility: No

Website: www.dmh.lacounty.gov

Email:

List of Practitioners

Not Available

Service Area 4

7300A 7300A CHILDREN BUREAU OF S CALIF OAKWOOD
3910 Oakwood Ave
Los Angeles , CA 90004-3413

Phone: 323-953-7350

Hours of Operation: MON & FRI: 9:00 AM-5:00 PM; WED: 9:00 AM-6:00 PM; TUES & THUR: 9:00 AM- 7:00 PM

Accepting Beneficiaries: Yes

Accessible By:

Provider:

Supervisory District: 1

Age Group Served: 0-20

Languages: English, Spanish,

Cultures:

Programs/Services:

ADA Facility: Yes

Website: www.all4kids.org

Email:

List of Practitioners

Not Available

Service Area 4

**7328A 7328 CHILDREN'S INSTITUTE INC.
701 AND 711 S NEW HAMPSHIRE AVENU
LOS ANGELES, CA 90005-1831**

Phone: 213-385-5100

Hours of Operation: MON - FRI 8:30 AM - 5:00 PM

Accepting Beneficiaries: No

Accessible By: Phone / Walk-Ins

Provider:

Supervisory District: 1

Age Group Served: 0-20

Languages: English, Spanish,

Cultures:

Programs/Services:

ADA Facility: Yes

Website: www.childrens institute.org/

Email: info@childrens institute.org

List of Practitioners

Not Available

Service Area 4

7619Z 7619Z SSG Alliance
515 Columbia Ave
Los Angeles, California 90017

Phone: (213) 249-9388

Hours of Operation: MON - FRI 8:30 AM - 5:00 PM

Accepting Beneficiaries: Yes

Accessible By: Phone Only

Provider:

Supervisory District: 1

Age Group Served: All Ages

Languages: American Sign Language, Arabic, Armenian, Cambodian, Cantonese, English, Farsi, Hmong, Korean, Mandarin, Other Chinese, Russian, Spanish, Tagalog, Vietnamese

Cultures:

Programs/Services:

ADA Facility: Yes

Website: www.ssg.org

Email:

List of Practitioners

Not Available

Service Area 4

**7623 7623 DMH TRANSITION AGE YOUTH DIV
550 SOUTH VERMONT AVE 4TH FLOOR
LOS ANGELES, CA 90020-1912**

Phone: 213-738-2408

Hours of Operation: 8:00-5:30pm

Accepting Beneficiaries: Yes

Accessible By:

Provider: DO

Supervisory District: 1

Age Group Served: All Ages

Languages: English, Spanish,

Cultures: Co-occurring Substance Use Disorders, Disabilities Special Needs, Forensic Legal, Gender Identity, Homeless Housing, Race Ethnicity, Sexual Orientation, Spirituality, Trauma, Under Represented Populations, Veterans,

Programs/Services:

ADA Facility: No

Website: www.dmh.lacounty.gov

Email:

List of Practitioners

Not Available

Service Area 4

**7644 7644 OUTREACH AND ENGAGEMNT PLN DIV COS
695 S VERMONT AVE 15TH FLOOR
LOS ANGELES, CA 90005-9998**

Phone: 213-251-6817

Hours of Operation: Call for Hours

Accepting Beneficiaries: No

Accessible By:

Provider: DO

Supervisory District: 1

Age Group Served: All Ages

Languages: English,

Cultures:

Programs/Services:

ADA Facility: No

Website: www.dmh.lacounty.gov

Email:

List of Practitioners

Not Available

Service Area 4

7743 7743 MENS JAIL LINKAGE SERVICES COS
450 BAUCHET STREET
LOS ANGELES, CA 90012-2907

Phone: 213-974-9083

Hours of Operation: Call for Hours

Accepting Beneficiaries: No

Accessible By:

Provider: DO

Supervisory District: 1

Age Group Served: All Ages

Languages: English,

Cultures:

Programs/Services:

ADA Facility: No

Website: www.dmh.lacounty.gov

Email:

List of Practitioners

Not Available

Service Area 4

7780A 7780A CHILDRENS INSTITUTE INC
679 S New Hampshire Ave
Los Angeles, CA 90005-1355

Phone: 213-260-7600

Hours of Operation: MON - FRI 8:30 AM - 5:00 PM

Accepting Beneficiaries: Yes

Accessible By: By Referral Only

Provider:

Supervisory District: 1

Age Group Served: 0-20

Languages: English, Spanish,

Cultures: Race Ethnicity, Trauma,

Programs/Services:

ADA Facility: Yes

Website: www.childrensinstitute.org/

Email: info@childrensinstitute.org

List of Practitioners

Not Available

Service Area 4

**7786 7786 OLDER ADULT PEI SPECIAL PROGRAMS
550 SOUTH VERMONT AVE
LOS ANGELES, CA 90020-1912**

Phone: 213-738-2322

Hours of Operation: Call for Hours

Accepting Beneficiaries: No

Accessible By:

Provider: DO

Supervisory District: 1

Age Group Served: All Ages

Languages: English,

Cultures:

Programs/Services:

ADA Facility: No

Website: www.dmh.lacounty.gov

Email:

List of Practitioners

Not Available

Service Area 4

7788 7788 DMH TRANS AGE YOUTH ADMIN COS
550 SOUTH VERMONT AVENUE
LOS ANGELES, CA 90020-1912

Phone: 213-351-7737

Hours of Operation: Call for Hours

Accepting Beneficiaries: No

Accessible By:

Provider: DO

Supervisory District: 1

Age Group Served: All Ages

Languages: English,

Cultures:

Programs/Services:

ADA Facility: No

Website: www.dmh.lacounty.gov

Email:

List of Practitioners

Not Available

Service Area 4

7794 7794 PEI EARLY START CHILD COS
600 S COMMONWEALTH AVE 6TH FL
LOS ANGELES, CA 90005-4001

Phone: 213-739-5427

Hours of Operation: Call for Hours

Accepting Beneficiaries: No

Accessible By:

Provider: DO

Supervisory District: 1

Age Group Served: All Ages

Languages: English,

Cultures:

Programs/Services:

ADA Facility: No

Website: www.dmh.lacounty.gov

Email:

List of Practitioners

Not Available

Service Area 4

**7802 7802 ADULT SYSTEM OF CARE COS
550 S VERMONT AVENUE
LOS ANGELES, CA 90020-1912**

Phone: 213-738-4142

Hours of Operation: Call for Hours

Accepting Beneficiaries: Yes

Accessible By:

Provider: DO

Supervisory District: 1

Age Group Served: All Ages

Languages: English,

Cultures:

Programs/Services:

ADA Facility: No

Website: www.dmh.lacounty.gov

Email:

List of Practitioners

Not Available

Service Area 4

**7817A 7817 CHILDREN'S INSTITUTE INC
2121 W TEMPLE ST
LOS ANGELES, CA 90026-4915**

Phone: 213-260-7600

Hours of Operation: MON-FRI 8:00 AM - 5:00 PM

Accepting Beneficiaries: Yes

Accessible By: Phone / Walk-Ins

Provider:

Supervisory District: 1

Age Group Served: 0-20

Languages: English, Spanish,

Cultures: Race Ethnicity, Trauma,

Programs/Services:

ADA Facility: Yes

Website: www.childrensinstitute.org/

Email: info@childrensinstitute.org

List of Practitioners

Not Available

Service Area 4

00G409950 BARBOUR JACK
1066 REDONDO BLVD
LOS ANGELES, CA 90019-6672

Phone:

Hours of Operation: Call for Hours

Accepting Beneficiaries: No

Accessible By:

Provider: FFS Outpat

Supervisory District: 2

Age Group Served: All Ages

Languages: English,

Cultures:

Programs/Services:

ADA Facility: No

Website:

Email:

List of Practitioners

Not Available

Service Area 4

**00A102131 CLIFFORD I IRIELE MD INC
1711 W TEMPLE ST
LOS ANGELES, CA 90026-5421**

Phone: 213-483-0246

Hours of Operation: 9AM TO 3PM

Accepting Beneficiaries: No

Accessible By:

Provider: FFS Outpat

Supervisory District: 1

Age Group Served: All Ages

Languages: English, Spanish,

Cultures:

Programs/Services:

ADA Facility: No

Website: irielemd@yahoo.com

Email:

List of Practitioners

Not Available

Service Area 4

**00A431650 HERNANDEZ MICHAEL
1720 CESAR CHAVEZ AVE
LOS ANGELES, CA 90033-2414**

Phone: 323-225-2786

Hours of Operation: Call for Hours

Accepting Beneficiaries: No

Accessible By:

Provider: FFS Outpat

Supervisory District: 1

Age Group Served: All Ages

Languages: English,

Cultures:

Programs/Services:

ADA Facility: No

Website:

Email:

List of Practitioners

Not Available

Service Area 4

000321 Hillside
815 Colorado Blvd
Los Angeles, CA 90041

Phone: 323-543-2800

Hours of Operation: 8:30 - 5:00

Accepting Beneficiaries: Yes

Accessible By:

Provider:

Supervisory District: 1

Age Group Served: All Ages

Languages: Armenian, English, Mandarin, Russian, Spanish, Tagalog,

Cultures: Co-occurring Substance Use Disorders, Disabilities Special Needs, Forensic Legal, Gender Identity, Homeless Housing, Race Ethnicity, Sexual Orientation, Spirituality, Trauma, Under Represented Populations, Veterans,

Programs/Services:

ADA Facility: Yes

Website: www.hillsides.org

Email:

List of Practitioners

Not Available

Service Area 4

**00PL40890 HUMAN DEVELOPMENT ASSOCIATES
7250 FRANKLIN AVE
LOS ANGELES, CA 90046-3046**

Phone: 3238746966

Hours of Operation: Call for Hours

Accepting Beneficiaries: No

Accessible By:

Provider: FFS Outpat

Supervisory District: 3

Age Group Served: All Ages

Languages: English,

Cultures:

Programs/Services:

ADA Facility: No

Website: www.hdapruitt.com

Email:

List of Practitioners

Not Available

Service Area 4

**00AX65601 ILAS MICHAEL
1720 CESAR CHAVEZ
LOS ANGELES, CA 90033**

Phone: 951-926-1014

Hours of Operation: Call for Hours

Accepting Beneficiaries: No

Accessible By:

Provider: FFS Outpat

Supervisory District: 1

Age Group Served: All Ages

Languages: English,

Cultures:

Programs/Services:

ADA Facility: No

Website:

Email:

List of Practitioners

Not Available

Service Area 4

00A350870 KUPIISK ASYA
7779 SUNSET BLVD
LOS ANGELES, CA 90046-3911

Phone: (323) 876-6649

Hours of Operation: Mon - Fri, 9 AM - 5 PM

Accepting Beneficiaries: No

Accessible By:

Provider: FFS Outpat

Supervisory District: 3

Age Group Served: All Ages

Languages: English,

Cultures:

Programs/Services:

ADA Facility: No

Website: Asya Kupisk M.D Inc

Email:

List of Practitioners

Not Available

Service Area 4

MF2733400 LOWE JOANNE
1156 BRONSON AVE
LOS ANGELES, CA 90019-3235

Phone: 323-737-0262

Hours of Operation: Call for Hours

Accepting Beneficiaries: No

Accessible By:

Provider: FFS Outpat

Supervisory District: 2

Age Group Served: All Ages

Languages: English,

Cultures:

Programs/Services:

ADA Facility: No

Website:

Email:

List of Practitioners

Not Available

Service Area 4

**00G709810 MARKLEY KEITH
1617 REDESDALE AVE
LOS ANGELES, CA 90026-1653**

Phone: 310-766-0600

Hours of Operation: Call for Hours

Accepting Beneficiaries: No

Accessible By:

Provider: FFS Outpat

Supervisory District: 1

Age Group Served: All Ages

Languages: English,

Cultures:

Programs/Services:

ADA Facility: No

Website:

Email:

List of Practitioners

Not Available

Service Area 4

0A1050570 PANTEA FARHADI
8631 W 3RD STREET SUITE W1065
LOS ANGELES, CA 90048-5901

Phone: (310) 890-7598

Hours of Operation: MONDAY TO FRIDAY , 9 TO 5

Accepting Beneficiaries: Yes

Accessible By: By Referral Only

Provider: FFS Outpat

Supervisory District: 2

Age Group Served: All Ages

Languages: English,

Cultures:

Programs/Services:

ADA Facility: No

Website: N/A

Email: embm2000@aol.com

List of Practitioners

Not Available

Service Area 4

**00A420440 ZLATOGOROV FAINA
7531 SANTA MONICA BLVD
LOS ANGELES, CA 90046-6458**

Phone: 323-876-3700

Hours of Operation: Call for Hours

Accepting Beneficiaries: No

Accessible By:

Provider: FFS Outpat

Supervisory District: 3

Age Group Served: All Ages

Languages: English,

Cultures:

Programs/Services:

ADA Facility: No

Website:

Email:

List of Practitioners

Not Available

Service Area 4

24 HOUR/RESIDENTIAL

**1982 1982 GATEWAY HOSPITAL + COMMUNITY MH CENTER
1891 EFFIE STREET
LOS ANGELES, CA 90026-1711**

Phone: 323-644-2000

Hours of Operation: 24 HOURS

Accepting Beneficiaries: No

Accessible By: BY REFERRAL ONLY

Provider: NGA

Supervisorial District: 1

Age Group Served: All Ages

Languages: English,

Cultures:

Programs/Services: 24 HR ACUTE INPATIENT

ADA Facility: No

Website:

Email:

List of Practitioners

Not Available

Service Area 4

24 HOUR/RESIDENTIAL

**6757 6757 GATEWAYS COMMUNITY MHC
433 N HOOVER STREET
LOS ANGELES, CA 90004-2306**

Phone: 323-644-2030

Hours of Operation: 24 HOURS

Accepting Beneficiaries: No

Accessible By: BY REFERRAL ONLY

Provider: NGA

Supervisorial District: 1

Age Group Served: All Ages

Languages: English,

Cultures:

Programs/Services: DAY TREATMENT, LIFE SUPPORT, VOCATIONAL SERVICES

ADA Facility: No

Website:

Email:

List of Practitioners

Not Available

Service Area 4

COMMUNITY OUTREACH

**7106 7106 LOS ANGELES GAY + LESBIAN COMMUNITY SERVICE CENTER
1625 SCHRADER BLVD
LOS ANGELES, CA 90028-6213**

Phone: 323-993-7500

Hours of Operation: MON - FRI 8:00 AM - 8:00 PM; SAT - 8:00 AM - 5:00 PM

Accepting Beneficiaries: Yes

Accessible By: Phone / Walk-Ins

Provider: NGA

Supervisorial District: 3

Age Group Served: All Ages

Languages: American Sign Language, Arabic, Armenian, Cambodian, Cantonese, English, Farsi, Hmong, Korean, Mandarin, Other Chinese, Russian, Spanish, Tagalog, Vietnamese

Cultures: Co-occurring Substance Use Disorders, Gender Identity, Homeless Housing, Sexual Orientation, Trauma, Under Represented Populations,

Programs/Services: COMMUNITY OUTREACH

ADA Facility: Yes

Website: www.lalgbtcenter.org

Email:

List of Practitioners

Not Available

Service Area 4

COMMUNITY OUTREACH

7112 7112 SSG/BACUP LIFE CENTER
1730 W OLYMPIC BLVD
LOS ANGELES, CA 90015-1008

Phone: 213-553-1875

Hours of Operation: MON-FRI 8:00 AM - 5:00 PM

Accepting Beneficiaries: No

Accessible By: CONTACT PROVIDER

Provider: NGA

Supervisorial District: 1

Age Group Served: All Ages

Languages: English,

Cultures:

Programs/Services: COMMUNITY OUTREACH

ADA Facility: Yes

Website: www.ssg.org

Email:

List of Practitioners

Not Available

Service Area 4

COMMUNITY OUTREACH

**7147 7147 FILIPINO/AMERICAN SERVICE GROUP, INC.
135 N PARK VIEW STREET
LOS ANGELES, CA 90026-5215**

Phone: 213-487-9804

Hours of Operation: Mon - FRI 8:00 AM - 5:00 PM

Accepting Beneficiaries: No

Accessible By: CONTACT PROVIDER

Provider: NGA

Supervisorial District: 1

Age Group Served: All Ages

Languages: English,

Cultures:

Programs/Services: COMMUNITY OUTREACH SERVICES

ADA Facility: No

Website: <http://www.fasgi.org/>

Email: admin@fasgi.org

List of Practitioners

Not Available

Service Area 4

COMMUNITY OUTREACH

**7203 7203 THE SABAN FREE CLINIC
8405 BEVERLY BOULEVARD
LOS ANGELES, CA 90048-3401**

Phone: 323-330-1650

Hours of Operation: MON - FRI 8:00 AM - 5:00 PM

Accepting Beneficiaries: No

Accessible By: CONTACT PROVIDER

Provider: NGA

Supervisory District: 2

Age Group Served: All Ages

Languages: English,

Cultures:

Programs/Services: COMMUNITY OUTREACH SERVICES

ADA Facility: No

Website:

Email:

List of Practitioners

Not Available

Service Area 4

COMMUNITY OUTREACH SERVICES

7773 7773 SHARE! DOWNTOWN
425 S BROADWAY
LOS ANGELES, CA 90013-1102

Phone: 213-213-0100

Hours of Operation: M-F 12:30PM-9:00PM

Accepting Beneficiaries: No

Accessible By: CONTACT PROVIDER

Provider: NGA

Supervisorial District: 1

Age Group Served: All Ages

Languages: English,

Cultures:

Programs/Services: COMMUNITY OUTREACH

ADA Facility: No

Website: shareselfhelp.org

Email:

List of Practitioners

Not Available

Service Area 4

COMMUNITY OUTREACH SERVICES

7962 7962 OPCC AND LAMP COMMUNITY INC
325 SOUTH LOS ANGELES STREET
LOS ANGELES, CA 90013-1407

Phone: (213) 488-9559

Hours of Operation: MON - FRI 8:00 AM - 5:00 PM

Accepting Beneficiaries: No

Accessible By: By Referral Only

Provider: NGA

Supervisory District: 1

Age Group Served: All Ages

Languages: English,

Cultures:

Programs/Services: COMMUNITY OUTREACH

ADA Facility: Yes

Website: www.thepeopleconcern.org

Email: bslusser@thepeopleconcern.org

List of Practitioners

Not Available

Service Area 4

CRISIS SERVICES

19A5 19A5 WHMET
780 N SAN VICENTE BLVD
WEST HOLLYWOOD, CA 90069-5021

Phone: 310-358-4043

Hours of Operation: 6:00AM-3:30PM

Accepting Beneficiaries: Yes

Accessible By: TUE - FRI 6:00 A.M. - 3:30 P.M.

Provider: DO

Supervisorial District: 3

Age Group Served: All Ages

Languages: English,

Cultures:

Programs/Services: CRISIS INTERVENTION, COMMUNITY CLIENT, MENTAL HEALTH PROMOTION, PSYCHOLOGICAL TESTING, TARGETED CASE MANAGEMENT

ADA Facility: No

Website: www.dmh.lacounty.gov

Email:

List of Practitioners

Not Available

Service Area 4

CRISIS SERVICES

**7379 7379 EOB CRISIS HOMELESS DOWNTOWN
695 S VERMONT AVE 8 FL
LOS ANGELES, CA 90005-1349**

Phone: 213-738-3442

Hours of Operation: MON - FRI 7:30 AM - 5:00 PM

Accepting Beneficiaries: No

Accessible By: FIELD RESPONSE ONLY

Provider: DO

Supervisorial District: 1

Age Group Served: All Ages

Languages: English,

Cultures:

Programs/Services: COMMUNITY OUTREACH SERVICES, CRISIS INTERVENTION,
MENTAL HEALTH SERVICES* (MHS), TARGETED CASE
MANAGEMENT,

ADA Facility: No

Website: www.dmh.lacounty.gov

Email:

List of Practitioners

Not Available

Service Area 4

CRISIS SERVICES

**7412 7412 GATEWAYS HOSPITAL SOCIAL REHABILITATION PROGRAM
423 N HOOVER ST .
LOS ANGELES, CA 90004-2306**

Phone: 323-644-2030

Hours of Operation: Sat - Sun, 24 Hours

Accepting Beneficiaries: No

Accessible By: 24/7

Provider: NGA

Supervisorial District: 1

Age Group Served: All Ages

Languages: English,

Cultures:

Programs/Services: ADULT CRISIS RESIDENTIAL, MEDICATION SUPPORT, LIFE SUPPORT

ADA Facility: No

Website:

Email:

List of Practitioners

Not Available

Service Area 4

CRISIS SERVICES

**7701 7701 HOMELESS OUTRCH N MOBILE ENGAGMNT
695 S VERMONT AVENUE FLR 9
LOS ANGELES, CA 90005-1349**

Phone: 213-480-3480

Hours of Operation: MON - FRI 8:00 AM - 5:00 PM

Accepting Beneficiaries: Yes

Accessible By: FIELD RESPONSE ONLY

Provider: DO

Supervisorial District: 1

Age Group Served: All Ages

Languages: English,

Cultures: Homeless Housing, Under Represented Populations,

Programs/Services: MENTAL HEALTH SERVICES* (MHS), TARGETED CASE MANAGEMENT, CRISIS INTERVENTION, COMMUNITY OUTREACH SERVICES, SUPPORT SERVICES,

ADA Facility: No

Website: www.dmh.lacounty.gov

Email:

List of Practitioners

Not Available

Service Area 4

CRISIS SERVICES

**7796 7796 EXODUS RECOVERY, INC - EASTSIDE
1920 MARENGO STREET
LOS ANGELES, CA 90033-1317**

Phone: 310-945-3350

Hours of Operation: 24/7

Accepting Beneficiaries: Yes

Accessible By: CONTACT PROVIDER

Provider: NGA

Supervisorial District: 1

Age Group Served: All Ages

Languages: English, Spanish,

Cultures:

Programs/Services: CRISIS INTERVENTION, MEDICATION SUPPORT, MENTAL HEALTH SERVICES* (MHS), SPECIALIZED FOSTER CARE

ADA Facility: No

Website: www.ExodusRecovery.com

Email:

List of Practitioners

Not Available

Service Area 4

CRISIS SERVICES

7924 7924 SA4 MOBILE TRIAGE TEAM
420 EAST 3RD STREET , SUITE 910
LOS ANGELES, CA 90013-1647

Phone: 213-922-8142

Hours of Operation: MON - FRI 8:00 AM - 5:00 PM

Accepting Beneficiaries: Yes

Accessible By: FIELD RESPONSE ONLY

Provider: DO

Supervisorial District: 1

Age Group Served: All Ages

Languages: English,

Cultures: Homeless Housing, Under Represented Populations, Veterans,

Programs/Services: COMMUNITY OUTREACH, CRISIS INTERVENTION, MENTAL HEALTH SERVICES* (MHS), TARGETED CASE MANAGEMENT

ADA Facility: No

Website: www.dmh.lacounty.gov

Email:

List of Practitioners

Not Available

Service Area 4

CRISIS SERVICES

**7929 7929 SA7 SB 82 MOBILE TRIAGE
600 COMMONWEALTH AVENUE SUITE 201
LOS ANGELES, CA 90005-4059**

Phone: 213-739-2380

Hours of Operation: MON - FRI 8:00 AM - 5:00 PM

Accepting Beneficiaries: No

Accessible By: FIELD BASED SERVICES

Provider: DO

Supervisory District: 1

Age Group Served: All Ages

Languages: English,

Cultures:

Programs/Services: MENTAL HEALTH SERVICES* (MHS), TARGETED CASE MANAGEMENT, CRISIS INTERVENTION, COMMUNITY OUTREACH SERVICES

ADA Facility: No

Website: www.dmh.lacounty.gov

Email:

List of Practitioners

Not Available

Service Area 4

JUVENILE JUSTICE

**1957 1957 CENTRAL JUVENILE HALL
1605 EASTLAKE AVENUE
LOS ANGELES, CA 90033-1009**

Phone: 323-226-8806

Hours of Operation: SAT 1:00 PM - 3:00 PM; SUN 1:00 PM - 4:00 PM

Accepting Beneficiaries: No

Accessible By: BY REFERRAL ONLY

Provider: DO

Supervisorial District: 1

Age Group Served: All Ages

Languages: English,

Cultures:

Programs/Services: MEDICATION SUPPORT, MENTAL HEALTH SERVICES* (MHS),
PSYCHOLOGICAL TESTING

ADA Facility: No

Website: www.dmh.lacounty.gov

Email:

List of Practitioners

Not Available

Service Area 4

JUVENILE JUSTICE

7503 7503B STAR VIEW COMMUNITY SERVICES
1625 W OLYMPIC BLVD
LOS ANGELES, CA 90015-3809

Phone: 323-999-2404

Hours of Operation: MON - FRI 8:00 AM - 5:00 PM

Accepting Beneficiaries: Yes

Accessible By: BY REFERRAL ONLY

Provider: NGA

Supervisorial District: 1

Age Group Served: All Ages

Languages: English, Spanish,

Cultures: Disabilities Special Needs, Gender Identity, Race Ethnicity, Sexual Orientation, Trauma, Under Represented Populations,

Programs/Services: MENTAL HEALTH SERVICES* (MHS), TARGETED CASE MANAGEMENT, CRISIS INTERVENTION

ADA Facility: Yes

Website: www.starsinc.com

Email:

List of Practitioners

Not Available

Service Area 4

JUVENILE JUSTICE

7821 7821 JUV JUS TRANSITION AFTERCARE SVCS
550 S VERMONT AVE 4TH FL
LOS ANGELES, CA 90020-1912

Phone: 213-738-3408

Hours of Operation: MON - FRI 8:30 AM - 5:00 PM

Accepting Beneficiaries: Yes

Accessible By: BY REFERRAL ONLY

Provider: DO

Supervisorial District: 1

Age Group Served: All Ages

Languages: English, Spanish,

Cultures: Co-occurring Substance Use Disorders, Forensic Legal, Trauma,
Under Represented Populations,

Programs/Services: COMMUNITY OUTREACH, MENTAL HEALTH SERVICES*
(MHS), TARGETED CASE MANAGEMENT

ADA Facility: Yes

Website: www.dmh.lacounty.gov

Email:

List of Practitioners

Not Available

Service Area 4

OUTPATIENT

1907 1907 GATEWAYS HOMELESS SERVICE PROGRAM
2502 W 3RD STREET 102
LOS ANGELES, CA 90057-1992

Phone: 323-644-2026

Hours of Operation: MON - FRI 8:00 AM - 5:00 PM

Accepting Beneficiaries: No

Accessible By: CONTACT PROVIDER

Provider: NGA

Supervisorial District: 1

Age Group Served: All Ages

Languages: English,

Cultures:

Programs/Services: MENTAL HEALTH SERVICES* (MHS), TARGETED CASE MANAGEMENT, TBS, COMMUNITY OUTREACH SERVICES,

ADA Facility: No

Website:

Email:

List of Practitioners

Not Available

Service Area 4

OUTPATIENT

1909 1909 HOLLYWOOD MENTAL HEALTH CENTER
1224 N VINE STREET
LOS ANGELES, CA 90038-1612

Phone: 323-769-6100

Hours of Operation: MON - FRI 8:00 AM - 5:00 PM

Accepting Beneficiaries: Yes

Accessible By: MON - FRI 8:00 AM - 2:30 PM

Provider: DO

Supervisory District: 2

Age Group Served: All Ages

Languages: English,

Cultures: Co-occurring Substance Use Disorders, Disabilities Special Needs, Homeless Housing, Race Ethnicity, Trauma, Under Represented Populations,

Programs/Services: CRISIS INTERVENTION, FULL SERVICE PARTNERSHIP (FSP), LIFE SUPPORT, MEDICATION SUPPORT, MENTAL HEALTH SERVICES* (MHS), PSYCHOLOGICAL TESTING, SPECIALIZED FOSTER CARE, TARGETED CASE MANAGEMENT, WELLNESS CENTER

ADA Facility: Yes

Website: www.dmh.lacounty.gov

Email:

List of Practitioners

Not Available

Service Area 4

OUTPATIENT

**190C 190C EXODUS IMHT
1902 MARENGO ST
LOS ANGELES, CA 90033-1312**

Phone: 323-276-6470

Hours of Operation: MON - FRI 8:00 AM - 4:30 PM

Accepting Beneficiaries: Yes

Accessible By: CONTACT PROVIDER

Provider: NGA

Supervisorial District: 1

Age Group Served: 21+

Languages: Cambodian, English, Spanish, Tagalog,

Cultures: Co-occurring Substance Use Disorders, Forensic Legal, Homeless Housing, Under Represented Populations,

Programs/Services: SUPPORT SERVICES, COMMUNITY OUTREACH SERVICES, MEDICATION SUPPPORT, MENTAL HEALTH SERVICES* (MHS), TARGETED CASE MANAGEMENT, CRISIS INTERVENTION,

ADA Facility: Yes

Website: www.ExodusRecovery.com

Email:

List of Practitioners

Not Available

Service Area 4

OUTPATIENT

**1914 1914 NORTHEAST MENTAL HEALTH CENTER
5321 VIA MARISOL
LOS ANGELES, CA 90042-4883**

Phone: 323-478-8200

Hours of Operation: MON - FRI 8:00 AM - 5:00 PM

Accepting Beneficiaries: Yes

Accessible By: MON - FRI 8:00 AM - 5:00 PM

Provider: DO

Supervisorial District: 1

Age Group Served: All Ages

Languages: Armenian, Cantonese, English, Farsi, Mandarin, Other Chinese, Russian, Spanish, Tagalog,

Cultures:

Programs/Services: CRISIS INTERVENTION, LIFE SUPPORT, MEDICATION SUPPORT, MENTAL HEALTH SERVICES* (MHS), PSYCHOLOGICAL TESTING, SPECIALIZED FOSTER CARE, TARGETED CASE MANAGEMENT

ADA Facility: No

Website: www.dmh.lacounty.gov

Email:

List of Practitioners

Not Available

Service Area 4

OUTPATIENT

**1933 1933 OPTIMIST EAGLE ROCK
1635 SILVER OAK TER
LOS ANGELES, CA 90041-3121**

Phone: 323-443-3175

Hours of Operation: MON - FRI 8:00 AM - 5:00 PM

Accepting Beneficiaries: Yes

Accessible By: BY REFERRAL ONLY

Provider: NGA

Supervisory District: 1

Age Group Served: 0-20

Languages: Arabic, English, Spanish,

Cultures: Co-occurring Substance Use Disorders, Disabilities Special Needs, Gender Identity, Race Ethnicity, Trauma, Under Represented Populations,

Programs/Services: MENTAL HEALTH SERVICES* (MHS), CRISIS INTERVENTION, TARGETED CASE MANAGEMENT, MEDICATION SUPPORT

ADA Facility: Yes

Website: www.oyhfs.org

Email:

List of Practitioners

Not Available

Service Area 4

OUTPATIENT

**1946 1946 OPTIMIST CAMPUS
6957 N FIGUEROA STREET
LOS ANGELES, CA 90042-1245**

Phone: 323-443-3175

Hours of Operation: MON - FRI 8:00 AM - 5:00 PM

Accepting Beneficiaries: Yes

Accessible By: BY REFERRAL ONLY

Provider: NGA

Supervisory District: 1

Age Group Served: 0-20

Languages: English, Korean, Spanish,

Cultures: Co-occurring Substance Use Disorders, Disabilities Special Needs, Gender Identity, Race Ethnicity, Trauma, Under Represented Populations,

Programs/Services: MENTAL HEALTH SERVICES* (MHS), CRISIS INTERVENTION, TARGETED CASE MANAGEMENT, MEDICATION SUPPORT

ADA Facility: Yes

Website: www.oyhfs.org

Email:

List of Practitioners

Not Available

Service Area 4

OUTPATIENT

**1956 1956 LAC USC MEDICAL CENTER
1200 N STATE ST
LOS ANGELES, CA 90033-1029**

Phone: 323-226-5551

Hours of Operation: MON - FRI 8:00 AM - 5:00 PM

Accepting Beneficiaries: No

Accessible By: 24 HOURS

Provider: DHS

Supervisorial District: 1

Age Group Served: All Ages

Languages: English,

Cultures:

Programs/Services: 24 HR ACUTE INPATIENT, CRISIS INTERVENTION,
MEDICATION SUPPORT, MENTAL HEALTH SERVICES* (MHS),
PSYCHOLOGICAL TESTING, TARGETED CASE MANAGEMENT

ADA Facility: No

Website: <http://lacusc.org/>

Email:

List of Practitioners

Not Available

Service Area 4

OUTPATIENT

**7057 7057 DOWNTOWN MENTAL HEALTH CENTER
640-646 S MAPLE AVENUE
LOS ANGELES, CA 90013-1511**

Phone: 213-629-6200

Hours of Operation: MON - FRI 8:00 AM - 5:00 PM

Accepting Beneficiaries: Yes

Accessible By: MON - FRI 8:00 AM - 5:00 PM

Provider: DO

Supervisorial District: 1

Age Group Served: All Ages

Languages: English, Russian, Spanish,

Cultures: Co-occurring Substance Use Disorders, Homeless Housing, Race Ethnicity, Trauma, Under Represented Populations,

Programs/Services: ASSESSMENT, BENEFITS ESTABLISHMENT, CO-OCCURRING DISORDERS TREATMENT, CRISIS INTERVENTION, EMERGENCY AND PERMANENT HOUSING ASSISTANCE GROUP THERAPY, MEDICATION EVALUATION AND SUPPORT, TARGETED CASE MANAGEMENT

ADA Facility: Yes

Website: www.dmh.lacounty.gov

Email:

List of Practitioners

Not Available

Service Area 4

OUTPATIENT

**7103 7103 KOREATOWN YOUTH + COMMUNITY CENTER, INC.
3727 W 6TH STREET SUITE 411
LOS ANGELES, CA 90020-5112**

Phone: 213-365-7400

Hours of Operation: MON-FRI 9:00 AM - 7:00 PM

Accepting Beneficiaries: Yes

Accessible By: CONTACT PROVIDER

Provider: NGA

Supervisorial District: 1

Age Group Served: 0-20

Languages: English, Korean, Spanish,

Cultures:

Programs/Services: MENTAL HEALTH SERVICES* (MHS), SPECIALIZED FOSTER CARE

ADA Facility: Yes

Website: kyccla.org

Email:

List of Practitioners

Not Available

Service Area 4

OUTPATIENT

7104 7104A AMANECER COMMUNITY COUNSELING SRVC
1200 WILSHIRE BLVD STE 200, 210, 300
LOS ANGELES, CA 90017-1931

Phone: 213-482-9400

Hours of Operation: MON - THURS 8:00 AM - 7:30 PM; FRI 8:00 AM - 7:00 PM

Accepting Beneficiaries: Yes

Accessible By: Phone / Walk-Ins

Provider: NGA

Supervisorial District: 1

Age Group Served: All Ages

Languages: English, Spanish,

Cultures: Homeless Housing, Under Represented Populations,

Programs/Services: PSYCHOLOGICAL TESTING, MENTAL HEALTH SERVICES*(MHS), CRISIS INTERVENTION, TARGETED CASE MANAGEMENT

ADA Facility: Yes

Website: www.amanecerla.org

Email:

List of Practitioners

Not Available

Service Area 4

OUTPATIENT

**7186 7186 ASIAN PACIFIC COUNSELING AND TREATMENT CENTER
520 S LA FAYETTE PARK PL SUITE 300
LOS ANGELES, CA 90057-5400**

Phone: (213)252-2100

Hours of Operation: MON 8:30 - 7:00 PM ; TUES - FRI 8:30 AM - 6:00 PM

Accepting Beneficiaries: Yes

Accessible By: Phone Only

Provider: NGA

Supervisory District: 1

Age Group Served: All Ages

Languages: Cantonese, English, Korean, Mandarin, Other Chinese, Spanish, Tagalog,

Cultures:

Programs/Services: DAY TREATMENT, FULL SERVICE PARTNERSHIP (FSP), MEDICATION SUPPORT, MENTAL HEALTH SERVICES* (MHS), PSYCHOLOGICAL TESTING, RESIDENTIAL, SPECIALIZED FOSTER CARE

ADA Facility: Yes

Website: www.ssg.org

Email:

List of Practitioners

Not Available

Service Area 4

OUTPATIENT

7213 7213 RESIDENTIAL AND BRIDGING SVCS
1925 N DALY ST 2ND FL
LOS ANGELES, CA 90031-3309

Phone: 213-738-4775

Hours of Operation: 24 HOURS

Accepting Beneficiaries: No

Accessible By: BY REFERRAL ONLY

Provider: DO

Supervisorial District: 1

Age Group Served: All Ages

Languages: English,

Cultures:

Programs/Services: MENTAL HEALTH SERVICES* (MHS), RESIDENTIAL,
TARGETED CASE MANAGEMENT

ADA Facility: No

Website: www.dmh.lacounty.gov

Email:

List of Practitioners

Not Available

Service Area 4

OUTPATIENT

7216 7216 SMART
100 W 1ST STREET 6TH FLOOR SUITE 630
LOS ANGELES, CA 90012-4112

Phone: 213-738-3412

Hours of Operation: Sunday through Saturday 0600-0200

Accepting Beneficiaries: Yes

Accessible By: FIELD RESPONSE ONLY

Provider: DO

Supervisory District: 1

Age Group Served: All Ages

Languages: Arabic, Armenian, Cambodian, English, Farsi, Korean, Mandarin, Russian, Spanish, Tagalog, Vietnamese

Cultures:

Programs/Services: CRISIS INTERVENTION, MENTAL HEALTH SERVICES* (MHS), PSYCHOLOGICAL TESTING, TARGETED CASE MANAGEMENT,

ADA Facility: Yes

Website: www.dmh.lacounty.gov

Email:

List of Practitioners

Not Available

Service Area 4

OUTPATIENT

**7241 7241 COUNTYWD OLDR ADLT GENESIS FCCS TM
550 S VERMONT AVE 6TH FLR
LOS ANGELES, CA 90020-1912**

Phone: 1 213 351-7284

Hours of Operation: MON - FRI 8:00 AM - 5:00 PM

Accepting Beneficiaries: Yes

Accessible By: BY REFERRAL ONLY

Provider: DO

Supervisorial District: 1

Age Group Served: All Ages

Languages: English, Russian, Spanish, Tagalog,

Cultures: Co-occurring Substance Use Disorders, Disabilities Special Needs, Forensic Legal, Homeless Housing, Trauma, Under Represented Populations, Veterans,

Programs/Services: CRISIS INTERVENTION, FIELD CAPABLE CLINICAL SERVICES (FCCS), MENTAL HEALTH SERVICES* (MHS), PSYCHOLOGICAL TESTING, TARGETED CASE MANAGEMENT

ADA Facility: No

Website: www.dmh.lacounty.gov

Email:

List of Practitioners

Not Available

Service Area 4

OUTPATIENT

**7255 7255 ENKI ELAMHS-PICO UNION
2523 W 7TH STREET
LOS ANGELES, CA 90057-3807**

Phone: 213-480-1557

Hours of Operation: 8am-5pm

Accepting Beneficiaries: Yes

Accessible By: CONTACT PROVIDER

Provider: NGA

Supervisorial District: 1

Age Group Served: All Ages

Languages: English, Spanish,

Cultures:

Programs/Services: CRISIS INTERVENTION, FULL SERVICE PARTNERSHIP (FSP),
MEDICATION SUPPORT, MENTAL HEALTH SERVICES* (MHS),
PSYCHOLOGICAL TESTING, TARGETED CASE MANAGEMENT

ADA Facility: Yes

Website: www.ehrs.com

Email:

List of Practitioners

Not Available

Service Area 4

OUTPATIENT

7262 7262 TELECARE LA ACT 4 OP
600 ST PAUL AVE
LOS ANGELES, CA 90017-2038

Phone: 213-482-6400

Hours of Operation: MON - FRI 8:00 AM - 4:30 PM

Accepting Beneficiaries: No

Accessible By: CONTACT PROVIDER

Provider: NGA

Supervisorial District: 1

Age Group Served: 21+

Languages: English, Spanish, Tagalog,

Cultures:

Programs/Services: CRISIS INTERVENTION, MEDICATION SUPPORT, MENTAL HEALTH SERVICES* (MHS)

ADA Facility: Yes

Website: www.telecarecorp.com

Email:

List of Practitioners

Not Available

Service Area 4

OUTPATIENT

7268 7268 AVIVA FAMILY AND CHILDREN'S SERVICES
3580 WILSHIRE BLVD
LOS ANGELES, CA 90010-2501

Phone: 213-637-5000

Hours of Operation: MON - FRI 8:00 AM - 5:00 PM

Accepting Beneficiaries: Yes

Accessible By: CONTACT PROVIDER

Provider: NGA

Supervisory District: 2

Age Group Served: All Ages

Languages: English,

Cultures:

Programs/Services: CRISIS INTERVENTION, MEDICATION SUPPORT, MENTAL HEALTH SERVICES* (MHS), PSYCHOLOGICAL TESTING, SPECIALIZED FOSTER CARE, TARGETED CASE MANAGEMENT, THERAPEUTIC BEHAVIORAL SERVICES (TBS), WRAPAROUND SERVICES

ADA Facility: Yes

Website: <http://www.aviva.org/>

Email:

List of Practitioners

Not Available

Service Area 4

OUTPATIENT

7278 7278 HATHAWAY SYCAMORES CHILD AND FAMILY SERVICES
840 N AVENUE 66
HIGHLAND PARK, CA 90042-1508

Phone: 626 395 7100

Hours of Operation: MON - FRI 9:00 AM - 5:00 PM

Accepting Beneficiaries: Yes

Accessible By: Phone / Walk-Ins

Provider: NGA

Supervisorial District: 1

Age Group Served: All Ages

Languages: English, Spanish,

Cultures: Co-occurring Substance Use Disorders, Disabilities Special Needs, Forensic Legal, Gender Identity, Homeless Housing, Race Ethnicity, Sexual Orientation, Trauma, Under Represented Populations,

Programs/Services: THERAPEUTIC BEHAVIORAL SERVICES (TBS), CRISIS INTERVENTION, FULL SERVICE PARTNERSHIP (FSP), MEDICATION SUPPORT, MENTAL HEALTH SERVICES* (MHS), PSYCHOLOGICAL TESTING, SPECIALIZED FOSTER CARE, TARGETED CASE MANAGEMENT

ADA Facility: Yes

Website: www.hathaway-sycamores.org

Email:

List of Practitioners

Not Available

Service Area 4

OUTPATIENT

**7312 7312 INSTITUTE FOR MULTICULTURAL COUNSELING +
EDUCATION
3580 WILSHIRE BLVD
LOS ANGELES, CA 90010-2501**

Phone: 213-381-1250

Hours of Operation: MON - FRI 8:00 AM - 5:00 PM, Evenings and weekends as scheduled

Accepting Beneficiaries: Yes

Accessible By: CONTACT PROVIDER

Provider: NGA

Supervisory District: 2

Age Group Served: All Ages

Languages: Arabic, Armenian, English, Farsi, Korean, Russian, Spanish,

Cultures: Co-occurring Substance Use Disorders, Forensic Legal, Gender Identity, Race Ethnicity, Sexual Orientation, Spirituality, Trauma, Under Represented Populations,

Programs/Services: CRISIS INTERVENTION, FULL SERVICE PARTNERSHIP (FSP), MEDICATION SUPPORT, MENTAL HEALTH SERVICES* (MHS), PSYCHOLOGICAL TESTING, SPECIALIZED FOSTER CARE, TARGETED CASE MANAGEMENT

ADA Facility: Yes

Website: www.imces.org

Email:

List of Practitioners

Not Available

Service Area 4

OUTPATIENT

7359 7359 DIDI HIRSCH - METRO CENTER
672 S LA FAYETTE PARK STE6
LOS ANGELES, CA 90057-3251

Phone: 213-381-3626

Hours of Operation: MON - FRI 9:00 AM - 5:00 PM

Accepting Beneficiaries: Yes

Accessible By: Phone / Walk-Ins

Provider: NGA

Supervisory District: 1

Age Group Served: All Ages

Languages: English, Spanish,

Cultures:

Programs/Services: CRISIS INTERVENTION, MEDICATION SUPPORT, MENTAL HEALTH SERVICES* (MHS), PSYCHOLOGICAL TESTING, SPECIALIZED FOSTER CARE, TARGETED CASE MANAGEMENT

ADA Facility: Yes

Website: <http://www.didihirsch.org>

Email:

List of Practitioners

Not Available

Service Area 4

OUTPATIENT

**7400 7400 SSG PROJECT 180
470 E 3RD STREET
LOS ANGELES, CA 90013-1629**

Phone: 213-620-5712

Hours of Operation: MON - FRI 8:00 AM - 5:00 PM

Accepting Beneficiaries: Yes

Accessible By: CONTACT PROVIDER

Provider: NGA

Supervisory District: 1

Age Group Served: All Ages

Languages: English, Spanish,

Cultures:

Programs/Services: CRISIS INTERVENTION, FULL SERVICE PARTNERSHIP (FSP),
MEDICATION SUPPORT, MENTAL HEALTH SERVICES* (MHS),
TARGETED CASE MANAGEMENT

ADA Facility: Yes

Website: www.ssg.org

Email:

List of Practitioners

Not Available

Service Area 4

OUTPATIENT

7414 7414 UNITED AMERICAN INDIAN INVOLVEMENT INC
1125 WEST 6TH STREET
LOS ANGELES, CA 90017-1828

Phone: 213-241-0979

Hours of Operation: MON - FRI 8:00 AM - 5:00 PM

Accepting Beneficiaries: No

Accessible By: CONTACT PROVIDER

Provider: NGA

Supervisorial District: 1

Age Group Served: All Ages

Languages: English,

Cultures:

Programs/Services: CRISIS INTERVENTION, MEDICATION SUPPORT, MENTAL HEALTH SERVICES* (MHS), PSYCHOLOGICAL TESTING, TARGETED CASE MANAGEMENT

ADA Facility: No

Website: uaii.org

Email: 7generations@uaii.org

List of Practitioners

Not Available

Service Area 4

OUTPATIENT

**7444 7444 OPTIMIST YOUTH HOMES-COLORADO FFA PALMDALE
7003 N FIGUEROA ST
LOS ANGELES, CA 90042-1247**

Phone: 323-443-3175

Hours of Operation: MON - FRI 9:00 AM - 5:30 PM

Accepting Beneficiaries: Yes

Accessible By: CONTACT PROVIDER

Provider: NGA

Supervisorial District: 1

Age Group Served: 0-20

Languages: English, Farsi, Korean, Mandarin, Spanish,

Cultures: Co-occurring Substance Use Disorders, Gender Identity, Sexual Orientation, Trauma,

Programs/Services: MEDICATION SUPPORT, MENTAL HEALTH SERVICES* (MHS), PSYCHOLOGICAL TESTING, TARGETED CASE MANAGEMENT, INTENSIVE CARE COORDINATION, INTENSIVE HOME BASED SERVICES

ADA Facility: Yes

Website: www.oyhfs.org

Email:

List of Practitioners

Not Available

Service Area 4

OUTPATIENT

7470 7470 GATEWAYS NORMANDIE VILLAGE EAST OUTPATIENT CLINIC
1338 S. GRAND AVE
LOS ANGELES, CA 90015-3009

Phone: 213-389-5820

Hours of Operation: MON - FRI 8:00 AM - 5:00 PM

Accepting Beneficiaries: No

Accessible By: CONTACT PROVIDER

Provider: NGA

Supervisorial District: 1

Age Group Served: All Ages

Languages: English,

Cultures:

Programs/Services: CRISIS INTERVENTION, HOMELESS, MEDICATION SUPPORT, MENTAL HEALTH SERVICES* (MHS)

ADA Facility: No

Website:

Email:

List of Practitioners

Not Available

Service Area 4

OUTPATIENT

**7472 7472 ENKI YOUTH AND FAMILY SERVICES BOYLE HEIGHTS
560 S ST LOUIS STREET
LOS ANGELES, CA 90033-4390**

Phone: 323-261-4900

Hours of Operation: Mon-Thurs 9am-6pm, Friday 8am-5pm

Accepting Beneficiaries: Yes

Accessible By: CONTACT PROVIDER

Provider: NGA

Supervisorial District: 1

Age Group Served: All Ages

Languages: English, Korean, Mandarin, Spanish, Vietnamese

Cultures:

Programs/Services: MEDICATION SUPPORT, MENTAL HEALTH SERVICES* (MHS),
PSYCHOLOGICAL TESTING, SPECIALIZED FOSTER CARE,
TARGETED CASE MANAGEMENT

ADA Facility: Yes

Website: www.ehrs.com

Email:

List of Practitioners

Not Available

Service Area 4

OUTPATIENT

7480 7480 VIP COMMUNITY MENTAL HEALTH CENTER INC
1721 GRIFFIN AVENUE
LOS ANGELES, CA 90031-3062

Phone: 323-221-4134

Hours of Operation: MON - THURS 8:00 AM - 8:00 PM, FRI - 8 AM - 6 PM

Accepting Beneficiaries: Yes

Accessible By: Phone / Walk-Ins

Provider: NGA

Supervisory District: 1

Age Group Served: All Ages

Languages: English, Spanish,

Cultures:

Programs/Services: CRISIS INTERVENTION, MEDICATION SUPPORT, MENTAL HEALTH SERVICES* (MHS), PSYCHOLOGICAL TESTING, SPECIALIZED FOSTER CARE, TARGETED CASE MANAGEMENT

ADA Facility: Yes

Website: www.violenceinterventionprogram.org

Email: contact@vip-cmhc.org

List of Practitioners

Not Available

Service Area 4

OUTPATIENT

7494 7494 AVIVA FAMILY AND CHILDREN'S SERVICES
7120 FRANKLIN AVENUE
LOS ANGELES, CA 90046-3002

Phone: 323-876-0550

Hours of Operation: MON - FRI 8:00 AM - 5:00 PM

Accepting Beneficiaries: Yes

Accessible By: CONTACT PROVIDER

Provider: NGA

Supervisorial District: 3

Age Group Served: All Ages

Languages: English, Spanish,

Cultures:

Programs/Services: MEDICATION SUPPORT, MENTAL HEALTH SERVICES* (MHS),
PSYCHOLOGICAL TESTING

ADA Facility: Yes

Website: <http://www.aviva.org/>

Email:

List of Practitioners

Not Available

Service Area 4

OUTPATIENT

7503 7503P STAR VIEW COMMUNITY SERVICES
1625 W OLYMPIC BLVD
LOS ANGELES, CA 90015-3809

Phone: 323-999-2404

Hours of Operation: MON - FRI 8:00 AM - 5:00 PM

Accepting Beneficiaries: Yes

Accessible By: CONTACT PROVIDER

Provider: NGA

Supervisorial District: 1

Age Group Served: All Ages

Languages: English, Spanish,

Cultures:

Programs/Services: FULL SERVICE PARTNERSHIP (FSP), MEDICATION SUPPORT, MENTAL HEALTH SERVICES* (MHS), PSYCHOLOGICAL TESTING, SPECIALIZED FOSTER CARE

ADA Facility: Yes

Website: www.starsinc.com

Email:

List of Practitioners

Not Available

Service Area 4

OUTPATIENT

**7517 7517 ASIAN PACIFIC COUNSELING + TREATMENT CENTER
1306 1310 WILSHIRE BLVD
LOS ANGELES, CA 90017-1705**

Phone: (213)483-3000

Hours of Operation: MON - FRI 9:00 AM - 5:00 PM

Accepting Beneficiaries: Yes

Accessible By: Phone Only

Provider: NGA

Supervisorial District: 1

Age Group Served: 21+

Languages: English, Korean,

Cultures:

Programs/Services: CRISIS INTERVENTION, DAY TREATMENT, MEDICATION SUPPORT, MENTAL HEALTH SERVICES* (MHS), SPECIALIZED FOSTER CARE

ADA Facility: Yes

Website: www.ssg.org

Email:

List of Practitioners

Not Available

Service Area 4

OUTPATIENT

**7519 7519 CALIFORNIA HISPANIC COMMISSION ON ALCOHOL +
DRUG A
2309 DALY STREET
LOS ANGELES, CA 90031-2703**

Phone: 323-222-4591

Hours of Operation: MON - FRI 8:00 AM - 5:00 PM

Accepting Beneficiaries: No

Accessible By: CONTACT PROVIDER

Provider: NGA

Supervisorial District: 1

Age Group Served: All Ages

Languages: English,

Cultures:

Programs/Services: CRISIS INTERVENTION, FULL SERVICE PARTNERSHIP (FSP),
MEDICATION SUPPORT, MENTAL HEALTH SERVICES* (MHS),
TARGETED CASE MANAGEMENT

ADA Facility: No

Website: <http://www.chcada.org/>

Email:

List of Practitioners

Not Available

Service Area 4

OUTPATIENT

**7520 7520 LINCOLN HEIGHTS FAMILY RECOVERY CENTER
4099 NORTH MISSION RD
LOS ANGELES, CA 90032-2554**

Phone: 323-221-1746

Hours of Operation: MON - FRI 8:00 AM - 5:00 PM

Accepting Beneficiaries: No

Accessible By: CONTACT PROVIDER

Provider: NGA

Supervisory District: 1

Age Group Served: All Ages

Languages: English,

Cultures:

Programs/Services: MEDICATION SUPPORT, MENTAL HEALTH SERVICES* (MHS),
SPECIALIZED FOSTER CARE, TARGETED CASE
MANAGEMENT

ADA Facility: No

Website: www.bhs-inc.org

Email: lleach@bhs-inc.org

List of Practitioners

Not Available

Service Area 4

OUTPATIENT

**7521 7521 BHS HOLLYWOOD RECOVERY CENTER
6838 W SUNSET BLVD
LOS ANGELES, CA 90028-7008**

Phone: 323-461-3161

Hours of Operation: MON - FRI 8:00 AM - 5:00 PM

Accepting Beneficiaries: No

Accessible By: CONTACT PROVIDER

Provider: NGA

Supervisorial District: 3

Age Group Served: All Ages

Languages: English,

Cultures:

Programs/Services: CRISIS INTERVENTION, MEDICATION SUPPORT, MENTAL HEALTH SERVICES* (MHS), PSYCHOLOGICAL TESTING, TARGETED CASE MANAGEMENT

ADA Facility: No

Website: www.bhs-inc.org

Email: lleach@bhs-inc.org

List of Practitioners

Not Available

Service Area 4

OUTPATIENT

**7538 7538 ST ANNE'S
155 N OCCIDENTAL BLVD
LOS ANGELES, CA 90026-4641**

Phone: 213-381-2931

Hours of Operation: MON - FRI 9:00 AM - 7:00 PM

Accepting Beneficiaries: Yes

Accessible By: CONTACT PROVIDER

Provider: NGA

Supervisorial District: 1

Age Group Served: All Ages

Languages: Armenian, English, Spanish,

Cultures:

Programs/Services: CRISIS INTERVENTION, MEDICATION SUPPORT, MENTAL HEALTH SERVICES* (MHS), COMMUNITY OUTREACH SERVICE

ADA Facility: Yes

Website: www.stannes.org

Email:

List of Practitioners

Not Available

Service Area 4

OUTPATIENT

7546 7546 PARA LOS NINOS
849 E SIXTH STREET
LOS ANGELES, CA 90021-1026

Phone: 213-623-8446

Hours of Operation: MON - FRI 8:00 AM - 5:00 PM

Accepting Beneficiaries: Yes

Accessible By: Phone / Walk-Ins

Provider: NGA

Supervisory District: 1

Age Group Served: All Ages

Languages: English, Spanish,

Cultures: Co-occurring Substance Use Disorders, Disabilities Special Needs, Homeless Housing, Race Ethnicity, Sexual Orientation, Spirituality, Trauma, Under Represented Populations,

Programs/Services: MEDICATION SUPPORT, MENTAL HEALTH SERVICES* (MHS), SPECIALIZED FOSTER CARE, TARGETED CASE MANAGEMENT

ADA Facility: Yes

Website: www.paralosninos.org

Email:

List of Practitioners

Not Available

Service Area 4

OUTPATIENT

**7581 7581 EL CENTRO DEL PUEBLO INC
1157 LEMOYNE STREET
LOS ANGELES, CA 90026-3206**

Phone: 213-483-6335

Hours of Operation: MON - FRI 9:00 AM - 7:30 PM

Accepting Beneficiaries: Yes

Accessible By: Phone / Walk-Ins

Provider: NGA

Supervisory District: 1

Age Group Served: All Ages

Languages: American Sign Language, Arabic, Armenian, Cambodian, Cantonese, English, Farsi, Hmong, Korean, Mandarin, Other Chinese, Russian, Spanish, Tagalog, Vietnamese

Cultures: Trauma,

Programs/Services: MEDICATION SUPPORT, MENTAL HEALTH SERVICES* (MHS), PSYCHOLOGICAL TESTING, SPECIALIZED FOSTER CARE

ADA Facility: Yes

Website: <http://ecdpla.org/>

Email: jmontemayor@ecdpla.org

List of Practitioners

Not Available

Service Area 4

OUTPATIENT

7586 7586 CHILDRENS HOSPITAL LA QUEENSCARE HEALTH + FAITH PA
4618 FOUNTAIN AVE
LOS ANGELES, CA 90029-1977

Phone: 323-669-4355

Hours of Operation: MON-FRI 8:00 AM - 5:00 PM

Accepting Beneficiaries: Yes

Accessible By: Phone / Walk-Ins

Provider: NGA

Supervisorial District: 1

Age Group Served: All Ages

Languages: English, Spanish,

Cultures:

Programs/Services: MENTAL HEALTH SERVICES* (MHS), MEDICATION SUPPORT, TARGETED CASE MANAGEMENT

ADA Facility: Yes

Website: <http://www.uscucedd.org/>

Email:

List of Practitioners

Not Available

Service Area 4

OUTPATIENT

7590 7590 CALIF HOSPITAL MEDICAL CTR-CALIF BEHAVIORAL HEALTH
1400 SOUTH GRAND AVE
LOS ANGELES, CA 90015-3048

Phone: 213-742-6250

Hours of Operation: MON-FRI 8:00 AM - 5:00 PM

Accepting Beneficiaries: Yes

Accessible By: Phone / Walk-Ins

Provider: NGA

Supervisorial District: 1

Age Group Served: All Ages

Languages: English, Spanish,

Cultures:

Programs/Services: MENTAL HEALTH SERVICES* (MHS), TARGETED CASE MANAGEMENT, CRISIS INTERVENTION,

ADA Facility: No

Website: www.dignityhealth.org

Email:

List of Practitioners

Not Available

Service Area 4

OUTPATIENT

**7614 7614 CHILDRENS HOSPITAL COMMUNITY MENTAL HEALTH CENTER
3250 WILSHIRE BLVD
LOS ANGELES, CA 90010-1577**

Phone: 323-351-2350

Hours of Operation: MON - THU 8:30 AM - 8:00 PM; FRI 8:30 AM - 6:00 PM

Accepting Beneficiaries: Yes

Accessible By: Phone Only

Provider: NGA

Supervisorial District: 2

Age Group Served: All Ages

Languages: American Sign Language, Arabic, Armenian, Cambodian, Cantonese, English, Farsi, Hmong, Korean, Mandarin, Other Chinese, Russian, Spanish, Tagalog, Vietnamese

Cultures: Co-occurring Substance Use Disorders, Disabilities Special Needs, Gender Identity, Homeless Housing, Race Ethnicity, Trauma, Under Represented Populations,

Programs/Services: MENTAL HEALTH SERVICES* (MHS), PSYCHOLOGICAL TESTING, MEDICATION SUPPORT, CRISIS INTERVENTION

ADA Facility: Yes

Website: <http://www.uscucedd.org/>

Email:

List of Practitioners

Not Available

Service Area 4

OUTPATIENT

**7645 7645 HILLSIDES FRC EP
1910 W SUNSET BLVD
LOS ANGELES, CA 90026-3281**

Phone: 323-254-2274

Hours of Operation: MON - FRI 8:00 AM - 5:00 PM

Accepting Beneficiaries: Yes

Accessible By: Phone / Walk-Ins

Provider: NGA

Supervisorial District: 1

Age Group Served: All Ages

Languages: English, Spanish,

Cultures: Co-occurring Substance Use Disorders, Disabilities Special Needs, Forensic Legal, Gender Identity, Homeless Housing, Race Ethnicity, Sexual Orientation, Spirituality, Trauma, Under Represented Populations, Veterans,

Programs/Services: CRISIS INTERVENTION, FULL SERVICE PARTNERSHIP (FSP), MEDICATION SUPPORT, MENTAL HEALTH SERVICES* (MHS), PSYCHOLOGICAL TESTING, SPECIALIZED FOSTER CARE, TARGETED CASE MANAGEMENT, THERAPEUTIC BEHAVIORAL SERVICES (TBS) (TBS)

ADA Facility: No

Website: www.hillsides.org

Email:

List of Practitioners

Not Available

Service Area 4

OUTPATIENT

7671 7671 GATEWAYS PERCY VILLAGE OP CLINIC
2414 N BROADWAY STE 201 203
LOS ANGELES, CA 90031-9998

Phone: 213-276-1066

Hours of Operation: MON - FRI 8:00 AM - 5:00 PM

Accepting Beneficiaries: No

Accessible By: CONTACT PROVIDER

Provider: NGA

Supervisorial District: 1

Age Group Served: All Ages

Languages: English,

Cultures:

Programs/Services: CRISIS INTERVENTION, MEDICATION SUPPORT, MENTAL HEALTH SERVICES* (MHS), TARGETED CASE MANAGEMENT

ADA Facility: No

Website:

Email:

List of Practitioners

Not Available

Service Area 4

OUTPATIENT

**7678 7678 PC PORTALS NEW HAMPSHIRE
679 S NEW HAMPSHIRE AVE
LOS ANGELES, CA 90005-1355**

Phone: 213-639-0230

Hours of Operation: MON - FRI 8:00 AM - 5:00 PM

Accepting Beneficiaries: Yes

Accessible By: CONTACT PROVIDER

Provider: NGA

Supervisory District: 1

Age Group Served: All Ages

Languages: English, Korean, Spanish,

Cultures:

Programs/Services: CRISIS INTERVENTION, FULL SERVICE PARTNERSHIP (FSP),
MEDICATION SUPPORT, MENTAL HEALTH SERVICES* (MHS),
SPECIALIZED FOSTER CARE, TARGETED CASE
MANAGEMENT

ADA Facility: Yes

Website: www.Pacificclinics.org

Email:

List of Practitioners

Not Available

Service Area 4

OUTPATIENT

7680 7680 SSG-LITTLE TOKYO SERVICE CENTER
231 E 3RD STREET SUITE G106
LOS ANGELES, CA 90013-1494

Phone: 213-473-3035

Hours of Operation: MON - FRI 8:00 AM - 5:00 PM

Accepting Beneficiaries: No

Accessible By: CONTACT PROVIDER

Provider: NGA

Supervisorial District: 1

Age Group Served: All Ages

Languages: English,

Cultures:

Programs/Services: CRISIS INTERVENTION, MEDICATION SUPPORT, MENTAL HEALTH SERVICES* (MHS), TARGETED CASE MANAGEMENT

ADA Facility: No

Website: www.ssg.org

Email:

List of Practitioners

Not Available

Service Area 4

OUTPATIENT

7685 7685 SSG-CHINATOWN SERVICE CENTER
767 N HILL STREET NO 400
LOS ANGELES, CA 90012-2343

Phone: 213-808-1700

Hours of Operation: MON - FRI 8:00 AM - 5:00 PM

Accepting Beneficiaries: No

Accessible By: CONTACT PROVIDER

Provider: NGA

Supervisorial District: 1

Age Group Served: All Ages

Languages: English,

Cultures:

Programs/Services: MENTAL HEALTH SERVICES* (MHS), TARGETED CASE
MANAGEMENT, COMMUNITY OUTREACH SERVICES

ADA Facility: No

Website: www.ssg.org

Email:

List of Practitioners

Not Available

Service Area 4

OUTPATIENT

**7706 7706 DOWNTOWN FSP PROGRAM
529 S. MAPLE AVENUE B
LOS ANGELES, CA 90013-1511**

Phone: 213-629-6200

Hours of Operation: MON - FRI 8:00 AM - 5:00 PM

Accepting Beneficiaries: Yes

Accessible By: MON - FRI 8:00 AM - 5:00 PM

Provider: DO

Supervisorial District: 1

Age Group Served: All Ages

Languages: English, Spanish,

Cultures: Co-occurring Substance Use Disorders, Forensic Legal, Homeless Housing,

Programs/Services: COMMUNITY OUTREACH SERVICES, CRISIS INTERVENTION, FULL SERVICE PARTNERSHIP (FSP), MEDICATION SUPPORT, MENTAL HEALTH SERVICES* (MHS), TARGETED CASE MANAGEMENT

ADA Facility: Yes

Website: www.dmh.lacounty.gov

Email:

List of Practitioners

Not Available

Service Area 4

OUTPATIENT

**7727 7727 JWCH INSTITUTE INC.
521 S SAN PEDRO ST
LOS ANGELES, CA 90013-2148**

Phone: 213-622-1048

Hours of Operation: MON - FRI 8:00 AM - 5:00 PM

Accepting Beneficiaries: Yes

Accessible By: By Referral Only

Provider: NGA

Supervisorial District: 1

Age Group Served: All Ages

Languages: English,

Cultures: Co-occurring Substance Use Disorders, Disabilities Special Needs, Homeless Housing, Race Ethnicity, Trauma, Under Represented Populations,

Programs/Services: CRISIS INTERVENTION, MEDICATION SUPPORT, MENTAL HEALTH SERVICES* (MHS), TARGETED CASE MANAGEMENT

ADA Facility: Yes

Website: www.jwchinstitute.org

Email:

List of Practitioners

Not Available

Service Area 4

OUTPATIENT

**7739 7739 HOLLYWOOD MHC WELLNESS CENTER
5000 SUNSET BLVD
LOS ANGELES, CA 90027-5861**

Phone: 323-769-6100

Hours of Operation: MON - FRI 8:00 AM - 5:00 PM

Accepting Beneficiaries: Yes

Accessible By: MON - FRI 8:00 AM - 5:00 PM

Provider: DO

Supervisorial District: 1

Age Group Served: All Ages

Languages: English,

Cultures: Co-occurring Substance Use Disorders, Disabilities Special Needs, Homeless Housing, Race Ethnicity, Trauma, Under Represented Populations,

Programs/Services: CRISIS INTERVENTION, DAY TREATMENT, FULL SERVICE PARTNERSHIP (FSP), LIFE SUPPORT, MEDICATION SUPPORT, MENTAL HEALTH SERVICES* (MHS), PSYCHOLOGICAL TESTING, TARGETED CASE MANAGEMENT, WELLNESS CENTER

ADA Facility: Yes

Website: www.dmh.lacounty.gov

Email:

List of Practitioners

Not Available

Service Area 4

OUTPATIENT

7749 7749 UPLIFT FAMILY SERVICES HOLLYWOOD
815 N EL CENTRO AVE
LOS ANGELES, CA 90038-3805

Phone: 323-463-2119

Hours of Operation: MON - FRI 8:00 AM - 5:00 PM

Accepting Beneficiaries: Yes

Accessible By: CONTACT PROVIDER

Provider: NGA

Supervisory District: 2

Age Group Served: All Ages

Languages: English, Spanish,

Cultures:

Programs/Services: MENTAL HEALTH SERVICES*(MHS). CRISIS INTERVENTION,
TARGETED CASE MANAGEMENT, PSYCHOLOGICAL
TESTING, MEDICATION SUPPORT, WRAPAROUND
SERVICES

ADA Facility: Yes

Website: www.upliftfs.org

Email:

List of Practitioners

Not Available

Service Area 4

OUTPATIENT

**7757 7757 DMHC ADULT FIELD CAPABLE CLINICAL S
522 SOUTH SAN PEDRO STREET
LOS ANGELES, CA 90013-2102**

Phone: 213-680-6300

Hours of Operation: MON - FRI 8:00 AM - 5:00 PM

Accepting Beneficiaries: Yes

Accessible By: MON - FRI 8:00 AM - 5:00 PM

Provider: DO

Supervisory District: 1

Age Group Served: All Ages

Languages: English, Spanish,

Cultures:

Programs/Services: COMMUNITY OUTREACH SERVICES, CRISIS INTERVENTION, FIELD CAPABLE CLINICAL SERVICES (FCCS), MEDICATION SUPPORT, MENTAL HEALTH SERVICES* (MHS), TARGETED CASE MANAGEMENT

ADA Facility: Yes

Website: www.dmh.lacounty.gov

Email:

List of Practitioners

Not Available

Service Area 4

OUTPATIENT

7759 7759 PROJECT 50 MENTAL HEALTH CLINIC
521 S SAN PEDRO ST
LOS ANGELES, CA 90013-2148

Phone: 213-622-0816

Hours of Operation: MON - FRI 8:00 AM - 5:00 PM

Accepting Beneficiaries: No

Accessible By: BY REFERRAL ONLY

Provider: DO

Supervisorial District: 1

Age Group Served: All Ages

Languages: English,

Cultures:

Programs/Services: CRISIS INTERVENTION, MEDICATION SUPPORT, MENTAL HEALTH SERVICES* (MHS), TARGETED CASE MANAGEMENT

ADA Facility: No

Website: www.dmh.lacounty.gov

Email:

List of Practitioners

Not Available

Service Area 4

OUTPATIENT

**7765 7765 NORTHEAST WELLNESS CENTER
5564 N FIGUEROA STREET
LOS ANGELES, CA 90042-4120**

Phone: 323-341-5100

Hours of Operation: MON - FRI 8:00 AM - 5:00 PM

Accepting Beneficiaries: Yes

Accessible By: MON - FRI 8:00 AM - 5:00 PM

Provider: DO

Supervisorial District: 1

Age Group Served: All Ages

Languages: English, Spanish,

Cultures:

Programs/Services: CRISIS INTERVENTION, DAY TREATMENT, FULL SERVICE PARTNERSHIP (FSP), LIFE SUPPORT, MEDICATION SUPPORT, MENTAL HEALTH SERVICES* (MHS), PSYCHOLOGICAL TESTING, TARGETED CASE MANAGEMENT, WELLNESS CENTER

ADA Facility: No

Website: www.dmh.lacounty.gov

Email:

List of Practitioners

Not Available

Service Area 4

OUTPATIENT

**7771 7771 HOLLYWOOD MHC FSP PROGRAM
947 COLE AVENUE
LOS ANGELES, CA 90038-2610**

Phone: 323-769-6100

Hours of Operation: MON - FRI 8:00 AM - 5:00 PM

Accepting Beneficiaries: Yes

Accessible By: MON - FRI 8:00 AM - 2:30 PM

Provider: DO

Supervisorial District: 2

Age Group Served: All Ages

Languages: English,

Cultures: Co-occurring Substance Use Disorders, Disabilities Special Needs, Homeless Housing, Race Ethnicity, Trauma, Under Represented Populations,

Programs/Services: CRISIS INTERVENTION, FULL SERVICE PARTNERSHIP (FSP), MEDICATION SUPPORT, MENTAL HEALTH SERVICES* (MHS), TARGETED CASE MANAGEMENT

ADA Facility: Yes

Website: www.dmh.lacounty.gov

Email:

List of Practitioners

Not Available

Service Area 4

OUTPATIENT

**7776 7776 VISTA DEL MAR-SPA 4
3345 WILSHIRE BLVD
LOS ANGELES, CA 90010-1810**

Phone: 310-836-1223

Hours of Operation: MON - FRI 8:00 AM - 5:00 PM

Accepting Beneficiaries: Yes

Accessible By: CONTACT PROVIDER

Provider: NGA

Supervisorial District: 2

Age Group Served: All Ages

Languages: English, Spanish,

Cultures:

Programs/Services: MENTAL HEALTH SERVICES* (MHS), CRISIS INTERVENTION,
TARGETED CASE MANAGEMENT

ADA Facility: Yes

Website: www.vistadelmar.org

Email:

List of Practitioners

Not Available

Service Area 4

OUTPATIENT

7783 7783 EXODUS RECOVERY, INC
1920 MARENGO STREET
LOS ANGELES, CA 90033-1317

Phone: 310-945-3350

Hours of Operation: MON - FRI 8:00 AM - 4:00 PM

Accepting Beneficiaries: Yes

Accessible By: CONTACT PROVIDER

Provider: NGA

Supervisorial District: 1

Age Group Served: All Ages

Languages: Cambodian, Cantonese, English, Farsi, Mandarin, Spanish,

Cultures:

Programs/Services: CRISIS INTERVENTION, MEDICATION SUPPORT, MENTAL HEALTH SERVICES* (MHS), SPECIALIZED FOSTER CARE, TARGETED CASE MANAGEMENT

ADA Facility: Yes

Website: www.ExodusRecovery.com

Email:

List of Practitioners

Not Available

Service Area 4

OUTPATIENT

**7784 7784 AMERICAN INDIAN COUNSELING CTR FSP
947 COLE AVENUE 2ND FLOOR
LOS ANGELES, CA 90038-2610**

Phone: 562-402-0677

Hours of Operation: MON - FRI 8:00 AM - 5:00 PM

Accepting Beneficiaries: Yes

Accessible By: By Referral Only

Provider: DO

Supervisorial District: 2

Age Group Served: All Ages

Languages: English, Spanish, Tagalog,

Cultures: Co-occurring Substance Use Disorders, Disabilities Special Needs, Gender Identity, Homeless Housing, Race Ethnicity, Sexual Orientation, Spirituality, Trauma, Under Represented Populations, Veterans,

Programs/Services: CRISIS INTERVENTION, FULL SERVICE PARTNERSHIP (FSP), MEDICATION SUPPORT, MENTAL HEALTH SERVICES* (MHS), TARGETED CASE MANAGEMENT

ADA Facility: Yes

Website: www.dmh.lacounty.gov

Email:

List of Practitioners

Not Available

Service Area 4

OUTPATIENT

**7785 7785 HERITAGE-MID-CITY
447 N EL MOLINO AVENUE 2200
PASADENA, CA 91101-1403**

Phone: 213-382-4400

Hours of Operation: MON - FRI 8:30 AM - 5:00 PM

Accepting Beneficiaries: Yes

Accessible By: Phone / Walk-Ins

Provider: NGA

Supervisorial District: 2

Age Group Served: 21+

Languages: Armenian, English, Russian, Spanish,

Cultures: Co-occurring Substance Use Disorders, Disabilities Special Needs, Forensic Legal, Homeless Housing, Race Ethnicity, Sexual Orientation, Trauma, Under Represented Populations, Veterans,

Programs/Services: CRISIS INTERVENTION, MEDICATION MANAGEMENT, MENTAL HEALTH SERVICES* (MHS), TARGETED CASE MANAGEMENT

ADA Facility: Yes

Website: www.heritageclinic.org

Email: info@heritageclinic.org

List of Practitioners

Not Available

Service Area 4

OUTPATIENT

**7791 7791 VIP COMMUNITY MENTAL HEALTH CENTER, INC.
2010 ZONAL AVENUE
LOS ANGELES, CA 90033-1026**

Phone: 323-221-4134

Hours of Operation: MON - FRI 8:00 AM - 5:00 PM

Accepting Beneficiaries: Yes

Accessible By: CONTACT PROVIDER

Provider: NGA

Supervisorial District: 1

Age Group Served: All Ages

Languages: English,

Cultures:

Programs/Services: CRISIS INTERVENTION, MEDICATION SUPPORT, MENTAL HEALTH SERVICES* (MHS), TARGETED CASE MANAGEMENT

ADA Facility: Yes

Website: www.violenceinterventionprogram.org

Email: contact@vip-cmhc.org

List of Practitioners

Not Available

Service Area 4

OUTPATIENT

**7795 7795 SPECIALIZED FOSTER CARE WEST LA
5757 WILSHIRE BLVD
LOS ANGELES, CA 90036-9998**

Phone: 323-900-6601

Hours of Operation: MON - FRI 8:00 AM - 5:00 PM

Accepting Beneficiaries: Yes

Accessible By: BY REFERRAL ONLY

Provider: DO

Supervisorial District: 2

Age Group Served: All Ages

Languages: English,

Cultures:

Programs/Services: CRISIS INTERVENTION, COMMUNITY OUTREACH SERVICES,
MENTAL HEALTH SERVICES* (MHS), TARGETED CASE
MANAGEMENT

ADA Facility: No

Website: www.dmh.lacounty.gov

Email:

List of Practitioners

Not Available

Service Area 4

OUTPATIENT

**7805 7805 STEP UP HOLLYWOOD
6762 LEXINGTON AVENUE STE A
LOS ANGELES, CA 90038-1217**

Phone: 323-380-7590

Hours of Operation: MON - FRI 8:00 AM - 5:00 PM

Accepting Beneficiaries: Yes

Accessible By: CONTACT PROVIDER

Provider: NGA

Supervisory District: 2

Age Group Served: All Ages

Languages: English, Spanish,

Cultures:

Programs/Services: MENTAL HEALTH SERVICES* (MHS), TARGETED CASE
MANAGEMENT

ADA Facility: Yes

Website: www.stepuponsecond.org

Email:

List of Practitioners

Not Available

Service Area 4

OUTPATIENT

**7825 7825 KOREAN AMERICAN FAMILY SERVICE CENTER
3727 W 6TH STREET STE 320
LOS ANGELES, CA 90020-5105**

Phone: 213-389-6755

Hours of Operation: MON - FRI 9:00 AM - 5:30 PM

Accepting Beneficiaries: Yes

Accessible By: CONTACT PROVIDER

Provider: NGA

Supervisory District: 1

Age Group Served: All Ages

Languages: English, Korean,

Cultures: Forensic Legal, Race Ethnicity,

Programs/Services: MENTAL HEALTH SERVICES* (MHS), CRISIS INTERVENTION,
MEDICATION SUPPORT, TARGETED CASE MANAGEMENT,
OUTREACH AND ENGAGEMENT, SUBSTANCE ABUSE
SERVICES

ADA Facility: Yes

Website: www.KFAMLA.org

Email: ejeon@kfamla.org

List of Practitioners

Not Available

Service Area 4

OUTPATIENT

**7828 7828 THE SABAN FREE CLINIC
6043 HOLLYWOOD BLVD
LOS ANGELES, CA 90028-5411**

Phone: 323-653-8622

Hours of Operation: MON - FRI 8:00 AM - 5:00 PM

Accepting Beneficiaries: No

Accessible By: CONTACT PROVIDER

Provider: NGA

Supervisory District: 3

Age Group Served: All Ages

Languages: English,

Cultures:

Programs/Services: MENTAL HEALTH SERVICES* (MHS), CRISIS INTERVENTION,
TARGETED CASE MANAGEMENT

ADA Facility: No

Website:

Email:

List of Practitioners

Not Available

Service Area 4

OUTPATIENT

7829 7829 EISNER HEALTH
1500 SOUTH OLIVE STREET
LOS ANGELES, CA 90015-3023

Phone: 213-746-1037

Hours of Operation: MON - FRI 8:00 AM - 6:00 PM

Accepting Beneficiaries: Yes

Accessible By: CONTACT PROVIDER

Provider: NGA

Supervisorial District: 1

Age Group Served: All Ages

Languages: English, Spanish,

Cultures: Trauma, Under Represented Populations,

Programs/Services: MEDICATION SUPPORT, MENTAL HEALTH SERVICES* (MHS),
TARGETED CASE MANAGEMENT

ADA Facility: Yes

Website: <http://www.eisnerhealth.org/>

Email: DHERNANDEZ@EISNERHEALTH.ORG

List of Practitioners

Not Available

Service Area 4

OUTPATIENT

7843 7843 CHILDREN'S HOSPITAL LOS ANGELES MENTAL HEALTH
5000 W SUNSET BLVD 4TH AND 5TH FLOOR
LOS ANGELES, CA 90027-5861

Phone: 323-361-3814

Hours of Operation: MON - FRI 9:00 AM - 5:30 PM

Accepting Beneficiaries: Yes

Accessible By: Phone / Walk-Ins

Provider: NGA

Supervisorial District: 1

Age Group Served: All Ages

Languages: American Sign Language, Arabic, Armenian, Cambodian, Cantonese, English, Farsi, Hmong, Korean, Mandarin, Other Chinese, Russian, Spanish, Tagalog, Vietnamese

Cultures: Disabilities Special Needs, Race Ethnicity, Trauma, Under Represented Populations,

Programs/Services: FULL SERVICE PARTNERSHIP (FSP), MENTAL HEALTH SERVICES* (MHS), PSYCHOLOGICAL TESTING, SPECIALIZED FOSTER CARE, TARGETED CASE MANAGEMENT

ADA Facility: Yes

Website: <http://www.uscucedd.org/>

Email:

List of Practitioners

Not Available

Service Area 4

OUTPATIENT

7844 7844 TELECARE DOWNTOWN LOS ANGELES
1005 S CENTRAL AVE
LOS ANGELES, CA 90021-2039

Phone: 213-482-6400

Hours of Operation: MON - FRI 8:00 AM - 5:00 PM

Accepting Beneficiaries: No

Accessible By: CONTACT PROVIDER

Provider: NGA

Supervisorial District: 1

Age Group Served: All Ages

Languages: English,

Cultures:

Programs/Services: MENTAL HEALTH SERVICES* (MHS), MEDICATION SUPPORT,
TARGETED CASE MANAGEMENT, CRISIS INTERVENTION

ADA Facility: No

Website: www.telecarecorp.com

Email:

List of Practitioners

Not Available

Service Area 4

OUTPATIENT

7865 7865 VALOR
1816 S FIGUEROA ST 6TH FLOOR
LOS ANGELES, CA 90015-3422

Phone: 213-763-0302

Hours of Operation: MON - FRI 8:00 AM - 5:00 PM

Accepting Beneficiaries: Yes

Accessible By: MON - FRI 8:00 AM - 4:30 PM

Provider: DO

Supervisorial District: 1

Age Group Served: All Ages

Languages: Arabic, Armenian, English, Spanish,

Cultures: Co-occurring Substance Use Disorders, Disabilities Special Needs, Forensic Legal, Gender Identity, Homeless Housing, Race Ethnicity, Sexual Orientation, Spirituality, Trauma, Under Represented Populations, Veterans,

Programs/Services: MENTAL HEALTH SERVICES* (MHS), CRISIS INTERVENTION, COMMUNITY OUTREACH SERVICES, TARGETED CASE MANAGEMENT, VETERAN SERVICES

ADA Facility: Yes

Website: www.dmh.lacounty.gov

Email:

List of Practitioners

Not Available

Service Area 4

OUTPATIENT

7875 7875 ALMA FAMILY SERVICES
456 SOUTH MATHEWS ST ,
LOS ANGELES, CA 90033-4326

Phone: (323) 881-3799

Hours of Operation: MON - FRI 8:00 AM - 5:00 PM

Accepting Beneficiaries: Yes

Accessible By: By Referral Only

Provider:

Supervisory District: 1

Age Group Served: All Ages

Languages: English, Spanish,

Cultures:

Programs/Services: MENTAL HEALTH SERVICES* (MHS), TARGETED CASE
MANAGEMENT, CRISIS INTERVENTION, MEDICATION
SUPPORT

ADA Facility: Yes

Website: <http://www.almafamilyservices.org/>

Email:

List of Practitioners

Not Available

Service Area 4

OUTPATIENT

**7879 7879 VIP COMMUNITY MENTAL HEALTH CENTER INC
456 S MATHEWS ST THEODORE ROOSEVELT HS
LOS ANGELES, CA 90033-4326**

Phone: 323-221-4134

Hours of Operation: MON - FRI 8:00 AM - 5:00 PM

Accepting Beneficiaries: Yes

Accessible By: CONTACT PROVIDER

Provider: NGA

Supervisorial District: 1

Age Group Served: 0-20

Languages: English, Spanish,

Cultures:

Programs/Services: MENTAL HEALTH SERVICES*(MHS), CRISIS INTERVENTION,
TARGETED CASE MANAGEMENT

ADA Facility: Yes

Website: www.violenceinterventionprogram.org

Email: contact@vip-cmhc.org

List of Practitioners

Not Available

Service Area 4

OUTPATIENT

**7884 7884 CHCADA ROOSEVELT-ISHC
456 S MATHEWS STREET
LOS ANGELES, CA 90033-4326**

Phone: 323-222-4591

Hours of Operation: MON-FRI 8:00 AM - 5:00 PM

Accepting Beneficiaries: No

Accessible By: CONTACT PROVIDER

Provider: NGA

Supervisory District: 1

Age Group Served: All Ages

Languages: English,

Cultures:

Programs/Services: CO-OCCURRING DISORDERS, MENTAL HEALTH SERVICES*
(MHS)

ADA Facility: No

Website: <http://www.chcada.org/>

Email:

List of Practitioners

Not Available

Service Area 4

OUTPATIENT

**7887 7887 JWCH INSTITUTE INC. MEDICAL CLINIC WEINGART CENTER
522 S SAN PEDRO STREET
LOS ANGELES, CA 90013-2102**

Phone: (213) 285-4260

Hours of Operation: MON-FRI 8:00 AM - 5:00 PM

Accepting Beneficiaries: Yes

Accessible By: Phone / Walk-Ins

Provider: NGA

Supervisory District: 1

Age Group Served: All Ages

Languages: English, Spanish,

Cultures: Co-occurring Substance Use Disorders, Disabilities Special Needs, Homeless Housing, Race Ethnicity, Spirituality, Trauma, Under Represented Populations,

Programs/Services: COMMUNITY OUTREACH, CRISDIS INTERVENTION, TARGETED CASE MANAGEMENT, MEDICATION SUPPORT, MENTAL HEALTH SERVICES* (MHS)

ADA Facility: Yes

Website: www.jwchinstitute.org

Email:

List of Practitioners

Not Available

Service Area 4

OUTPATIENT

**7889 7889 AVIVA FAMILY AND CHILDREN'S SERVICES
1530 ORANGE DRIVE ROOM 101-W
LOS ANGELES, CA 90028-7001**

Phone: 213-637-5000

Hours of Operation: MON - FRI 8:00 AM - 5:00 PM

Accepting Beneficiaries: Yes

Accessible By: CONTACT PROVIDER

Provider: NGA

Supervisorial District: 3

Age Group Served: All Ages

Languages: English,

Cultures:

Programs/Services: MENTAL HEALTH SERVICES* (MHS), TARGETED CASE
MANAGEMENT, CRISIS INTERVENTION

ADA Facility: Yes

Website: <http://www.aviva.org/>

Email:

List of Practitioners

Not Available

Service Area 4

OUTPATIENT

7893 7893 ALMA FAMILY SERVICES
1200 N STATE ST SUITE 1016
LOS ANGELES, CA 90033-1083

Phone: 213-344-3799

Hours of Operation: MON - FRI 8:00 AM - 5:00 PM

Accepting Beneficiaries: Yes

Accessible By: By Referral Only

Provider: NGA

Supervisorial District: 1

Age Group Served: All Ages

Languages: English, Spanish,

Cultures: Race Ethnicity,

Programs/Services: MENTAL HEALTH SERVICES* (MHS), TBA, TARGETED CASE MANAGEMENT, CRISIS INTERVENTION, MEDICATION SUPPORT

ADA Facility: Yes

Website: <http://www.almafamilyservices.org/>

Email:

List of Practitioners

Not Available

Service Area 4

OUTPATIENT

7904 7904 DMHC - PEI PROGRAM
529 S. MAPLE AVENUE
LOS ANGELES, CA 90013-1511

Phone: 213-629-6200

Hours of Operation: MON - FRI 8:00 AM - 5:00 PM

Accepting Beneficiaries: Yes

Accessible By: MON - FRI 8:00 AM - 5:00 PM

Provider: DO

Supervisorial District: 1

Age Group Served: All Ages

Languages: English, Spanish,

Cultures:

Programs/Services: COMMUNITY OUTREACH, CRISIS INTERVENTION,
MEDICATION SUPPORT, MENTAL HEALTH SERVICES* (MHS),
PREVENTION & EARLY INTERVENTION (PEI), TARGETED
CASE MANAGEMENT

ADA Facility: Yes

Website: www.dmh.lacounty.gov

Email:

List of Practitioners

Not Available

Service Area 4

OUTPATIENT

7905 7905 DMHC - CALWORKS PROGRAM
631 C - MAPLE AVENUE
LOS ANGELES, CA 90014-2211

Phone: 213-680-6300

Hours of Operation: MON-FRI 8:00 AM - 5:00 PM

Accepting Beneficiaries: Yes

Accessible By: MON-FRI 8:00 AM - 5:00 PM

Provider: DO

Supervisorial District: 1

Age Group Served: All Ages

Languages: English, Spanish,

Cultures: Co-occurring Substance Use Disorders, Homeless Housing,
Trauma, Under Represented Populations,

Programs/Services: MENTAL HEALTH SERVICES* (MHS), CRISIS INTERVENTION,
TARGETED CASE MANAGEMENT

ADA Facility: No

Website: www.dmh.lacounty.gov

Email:

List of Practitioners

Not Available

Service Area 4

OUTPATIENT

7906 7906 START PROGRAM
600 S COMMONWEALTH AVE 15TH FLR
LOS ANGELES, CA 90005-4063

Phone: 213-739-5565

Hours of Operation: MON - FRI 8:00 AM - 5:00 PM

Accepting Beneficiaries: Yes

Accessible By: FIELD RESPONSE ONLY

Provider: DO

Supervisorial District: 1

Age Group Served: 0-20

Languages: English,

Cultures:

Programs/Services: CRISIS INTERVENTION, MENTAL HEALTH SERVICES* (MHS),
TARGETED CASE MANAGEMENT

ADA Facility: Yes

Website: www.dmh.lacounty.gov

Email:

List of Practitioners

Not Available

Service Area 4

OUTPATIENT

7928 7928 ASSISTED OUTPATIENT TREATMENT LA
420 E 3RD STREET SUITE 910
LOS ANGELES, CA 90013-1647

Phone: 213-922-8144

Hours of Operation: MON - FRI 8:00 AM - 5:00 PM

Accepting Beneficiaries: No

Accessible By: FIELD RESPONSE ONLY

Provider: DO

Supervisorial District: 1

Age Group Served: All Ages

Languages: English,

Cultures:

Programs/Services: MENTAL HEALTH SERVICES* (MHS), TARGETED CASE MANAGEMENT, CRISIS INTERVENTION, COMMUNITY OUTREACH SERVICES, SUPPORT SERVICES,

ADA Facility: Yes

Website: www.dmh.lacounty.gov

Email:

List of Practitioners

Not Available

Service Area 4

OUTPATIENT

7957 7957 GATEWAYS CHILD AND ADOLESCENT OUTPATIENT PROGRAM

**1891 EFFIE STREET
LOS ANGELES, CA 90026-1711**

Phone: 323-644-2000

Hours of Operation: MON - FRI 8:00 AM - 5:00 PM

Accepting Beneficiaries: No

Accessible By: CONTACT PROVIDER

Provider: NGA

Supervisorial District: 1

Age Group Served: All Ages

Languages: English,

Cultures:

Programs/Services: COMMUNITY OUTREACH, CRISIS INTERVENTION, MEDICATION SUPPORT, MENTAL HEALTH SERVICES* (MHS), PREVENTION & EARLY INTERVENTION (PEI), TARGETED CASE MANAGEMENT

ADA Facility: No

Website:

Email:

List of Practitioners

Not Available

Service Area 4

OUTPATIENT

7961 7961 OPCC AND LAMP COMMUNITY INC
619 EAST 5TH STREET
LOS ANGELES, CA 90013-2109

Phone: (213) 537-0822

Hours of Operation: MON - FRI 8:00 AM - 4:30 PM

Accepting Beneficiaries: Yes

Accessible By: Phone / Walk-Ins

Provider: NGA

Supervisorial District: 1

Age Group Served: All Ages

Languages: English, Spanish,

Cultures: Homeless Housing, Trauma,

Programs/Services: CRISIS INTERVENTION, MENTAL HEALTH SERVICES* (MHS),
TARGETED CASE MANAGEMENT, MEDICATION SUPPORT

ADA Facility: Yes

Website: www.thepeopleconcern.org

Email: bslusser@thepeopleconcern.org

List of Practitioners

Not Available

Service Area 4

OUTPATIENT

**7978 7978 VIP SMIDT TECH HIGH SCHOOL
211 SOUTH AVENUE 20
LOS ANGELES, CA 90031-2508**

Phone: 323-221-4134

Hours of Operation: MON - FRI 8:00 AM - 5:00 PM

Accepting Beneficiaries: Yes

Accessible By: CONTACT PROVIDER

Provider: NGA

Supervisory District: 1

Age Group Served: 0-20

Languages: English, Spanish,

Cultures:

Programs/Services: MENTAL HEALTH SERVICES* (MHS), TARGETED CASE
MANAGEMENT, COMMUNITY OUTREACH SERVICES

ADA Facility: Yes

Website: www.violenceinterventionprogram.org

Email: contact@vip-cmhc.org

List of Practitioners

Not Available

Service Area 4

OUTPATIENT

7981 7981 SSG KYCC
3727 W 6TH STREET SUITE 411
LOS ANGELES, CA 90020-5112

Phone: 213-365-7400

Hours of Operation: MON - FRI 8:00 AM - 5:00 PM

Accepting Beneficiaries: Yes

Accessible By: CONTACT PROVIDER

Provider: NGA

Supervisorial District: 1

Age Group Served: All Ages

Languages: English, Korean,

Cultures:

Programs/Services: MENTAL HEALTH SERVICES* (MHS), TARGETED CASE
MANAGEMENT, COMMUNITY OUTREACH SERVICES

ADA Facility: Yes

Website: www.ssg.org

Email:

List of Practitioners

Not Available

Service Area 4

OUTPATIENT

7985 7985 SSG SILVER
515 COLUMBIA AVENUE STE 100
LOS ANGELES, CA 90017-1209

Phone: 213-553-1884

Hours of Operation: MON - FRI 8:00 AM - 5:00 PM

Accepting Beneficiaries: Yes

Accessible By: CONTACT PROVIDER

Provider: NGA

Supervisory District: 1

Age Group Served: All Ages

Languages: Cambodian, Cantonese, English, Korean, Mandarin, Spanish, Tagalog,

Cultures:

Programs/Services: MENTAL HEALTH SERVICES* (MHS), TARGETED CASE MANAGEMENT, COMMUNITY OUTREACH SERVICES

ADA Facility: Yes

Website: www.ssg.org

Email:

List of Practitioners

Not Available

Service Area 4

OUTPATIENT

7995 7995 MENS COMM REINTEGRATION PROG
529 S. MAPLE AVENUE A
LOS ANGELES, CA 90013-1511

Phone: 213-629-6200

Hours of Operation: MON - FRI 8:00 AM - 5:00 PM

Accepting Beneficiaries: Yes

Accessible By: BY REFERRAL ONLY

Provider: DO

Supervisory District: 1

Age Group Served: All Ages

Languages: English, Spanish,

Cultures: Co-occurring Substance Use Disorders, Forensic Legal, Homeless Housing,

Programs/Services: MENTAL HEALTH SERVICES* (MHS), CRISIS INTERVENTION, TARGETED CASE MANAGEMENT, MEDICATION SUPPORT, COMMUNITY OUTREACH SERVICES, SUPPORT SERVICES

ADA Facility: Yes

Website: www.dmh.lacounty.gov

Email:

List of Practitioners

Not Available

Attestation

Provider Number	Provider Name	Attestation Received - YES	Attestation Received - NO
0054	HARBOR VIEW CENTER		NO
0055	LANDMARK MEDICAL CENTER		NO
0057	LA PAZ		NO
0058	LAUREL PARK		NO
0059	MEADOWBROOK MANOR		NO
0061	OLIVE VISTA		NO
0063	SAN GABRIEL VALLEY CONVALESCENT HOSPITAL		NO
0067	VIEW HEIGHTS CONVALESCENT HOSPITAL		NO
0080	COMMUNITY CARE CENTER		NO
1904	ANTELOPE VALLEY MHC		NO
1905	SANTA CLARITA VALLEY MENTAL HEALTH CENTER		NO
1906	EDMUND D EDELMAN MENTAL HEALTH CENTER-ADULT		NO
1907	GATEWAYS HOMELESS SERVICES		NO
1908	WEST CENTRAL FAMILY MENTAL HEALTH SERVICES		NO
1909	HOLLYWOOD MENTAL HEALTH CENTER		NO
190A	PENNY LANE CENTERS, SATELLITE VII		NO
190B	PENNY LANE CENTERS, SATELLITE IV		NO
190C	EXODUS IMHT		NO
190D	PENNY LANE CENTERS, SATELLITE IX		NO
190E	PENNY LANE CENTERS, SATELLITE X		NO
190F	PENNY LANE CENTERS, SATELLITE III		NO
190G	PENNY LANE CENTERS, SATELLITE VI		NO
190H	PENNY LANE CENTERS, SATELLITE III		NO
1910	PASADENA UNIFIED SCHOOL DISTRICT		NO
1912	BELL GARDENS YOUTH AND FAMILY SERVICES		NO

Nov 12, 2020

132

For first time visit and/or new referrals, please contact provider. To obtain Mental Health Information and Services confidentially, please call the 24/7 ACCESS Center Hotline at 1-800-854-7771. (For TDD-TTY, call 1-866-735-2922.) To schedule interpreter services for the hearing impaired (American Sign Language-ASL), please call the 24/7 ACCESS Center Hotline. *MHS refers to individual/group therapy and collateral services. Provider: DMH = Directly-Operated Facility; NGA = Non-Governmental Agency (Contractor); FFS = Fee-for-Service.

Attestation

Provider Number	Provider Name	Attestation Received - YES	Attestation Received - NO
1913	HEOPLINE YOUTH COUNSELING, INC		NO
1914	NORTHEAST MENTAL HEALTH CENTER		NO
1916	TARZANA TREATMENT CENTER		NO
1917	ARCADIA MENTAL HEALTH CENTER		NO
1918	THE HELP GROUP, CHILD AND FAMILYCENTER		NO
1921	WHITTIER WMET		NO
1926	LONG BEACH CHILD & ADOLESCENT CLINIC		NO
1927	LONG BEACH MENTAL HEALTH SERVICES (MHS) ADULT CLINIC		NO
1928	SAN PEDRO MENTAL HEALTH CLINIC (MHC)		NO
1930	RIO HONDO COMMUNITY MENTAL HEALTH CENTER	YES	
1932	WSGVMET		NO
1933	OPTIMIST EAGLE ROCK		NO
1934	OPTIMIST CARSON		NO
1935	SOUTH BAY MENTAL HEALTH SERVICES (MHS)		NO
1936	OPTIMIST MISSION HILLS		NO
1937	PACIFIC LODGE YOUTH SERVICES		NO
1938	COMPTON MENTAL HEALTH CENTER		NO
1941	PACIFIC LODGE CAMPUS		NO
1942	SGMET		NO
1943	ROSEMARY CHILDREN'S SERVICES		NO
1944	LAWMET		NO
1945	IMET		NO
1946	OPTIMIST CAMPUS		NO
1947	HRMBMET		NO
1948	OPTIMIST VAN NUYS		NO

Nov 12, 2020

133

For first time visit and/or new referrals, please contact provider. To obtain Mental Health Information and Services confidentially, please call the 24/7 ACCESS Center Hotline at 1-800-854-7771. (For TDD-TTY, call 1-866-735-2922.) To schedule interpreter services for the hearing impaired (American Sign Language-ASL), please call the 24/7 ACCESS Center Hotline. *MHS refers to individual/group therapy and collateral services. Provider: DMH = Directly-Operated Facility; NGA = Non-Governmental Agency (Contractor); FFS = Fee-for-Service.

Attestation

Provider Number	Provider Name	Attestation Received - YES	Attestation Received - NO
1949	OPTIMIST SYLMAR JH		NO
1953	LAC-OLIVE VIEW/UCLA MEDICAL CENTER		NO
1953	LAC-OLIVE VIEW-EMERGENCY ROOM		NO
1954	HILLVIEW MH AUXILIARY OUTPATIENT, SITE 2		NO
1955	HILLSIDES BOYS SATELLITE HOME		NO
1956	LAC + USC MEDICAL CENTER		NO
1956	LAC + USC MEDICAL CENTER - CRISIS STABILIZATION		NO
1956	LAC + USC MEDICAL CENTER - PSYCH OUTPATIENT		NO
1957	CENTRAL JUVENILE HALL		NO
1958	DOROTHY KIRBY		NO
1959	HILLSIDES GIRLS SATELLITE HOME		NO
1960	HILLSIDES STRTP		NO
1961	STAR VIEW ADOLESCENT CENTER, PSYCHIATRIC HEALTH FACILITY		NO
1962	LAC HARBOR UCLA MEDICAL CENTER, CRISIS STABLIZATION		NO
1962	LAC HARBOR-UCLA MEDICAL CENTER		NO
1964	BIENVENIDOS CHILDREN'S CENTER		NO
1965	PENNY LANE CENTER, MAIN FACILITY		NO
1967	BIENVENIDOS MONTEBELLO		NO
1969	SOUTH BAY CHILDREN'S HEALTH CENTER		NO
1972	THE WHOLE CHILD		NO
1973	DIDI HIRSCH-SEPULVEDA		NO
1974	PACIFIC CLINICS PASADENA FAMILY SERVICES		NO
1975	CHILD & FAMILY GUIDANCE CENTER-NORTHRIDGE		NO
1977	COMMUNITY FAMILY GUIDANCE CENTER		NO

Nov 12, 2020

134

For first time visit and/or new referrals, please contact provider. To obtain Mental Health Information and Services confidentially, please call the 24/7 ACCESS Center Hotline at 1-800-854-7771. (For TDD-TTY, call 1-866-735-2922.) To schedule interpreter services for the hearing impaired (American Sign Language-ASL), please call the 24/7 ACCESS Center Hotline. *MHS refers to individual/group therapy and collateral services. Provider: DMH = Directly-Operated Facility; NGA = Non-Governmental Agency (Contractor); FFS = Fee-for-Service.

Attestation

Provider Number	Provider Name	Attestation Received - YES	Attestation Received - NO
1979	PACIFIC CLINICS-E FOOTHILL GUIDANCE		NO
1982	GATEWAYS CMHC		NO
1990	BIENVENIDOS CHILDRENS CENTER		NO
1991	BIENVENIDOS VILLAGE		NO
1992	PENNY LANE CENTER, SATELLITE V		NO
1996	PENNY LANE CENTER, SATELLITE I		NO
1997	VISTA DEL MAR CHILD AND FAMILY STRTP		NO
1998	PENNY LANE CENTER, SATELLITE VIII		NO
6757	GATEWAYS COMMUNITY MHC MDO		NO
6758	HILLVIEW MHC ADULT RESIDENTIAL		NO
6773	PROVIDENCE - ST. JOHN'S CHILD & FAMILY DEVELOPMENT CENTER		NO
6792	PROVIDENCE SAINT JOHN'S HEALTH CENTER		NO
6821	BARRY J. NIDORF, JUVENILE HALL, MH UNIT		NO
6821	OPTIMIST AT BARRY J. NIDORF (SATELLITE)		NO
6840	SAN FERNANDO MENTAL HEALTH CENTER		NO
6841	WEST VALLEY MENTAL HEALTH WELLNESS CENTER		NO
6853	SAN FERNANDO VALLEY CMHC-YOUTH & FAMILY CTR.		NO
6857	ROYBAL FAMILY MENTAL HEALTH CENTER		NO
6859	HARBOR-UCLA MEDICAL CENTER		NO
6863	PENNY LANE CENTERS		NO
6864	AUGUSTUS F. HAWKINS MENTAL HEALTH CENTER		NO
6864	AUGUSTUS F. HAWKINS MENTAL HEALTH CENTER, FIRST 5 PCIT (SATELLITE)		NO
6864	AUGUSTUS F. HAWKINS MENTAL HEALTH CENTER, HAVEN CLINIC (SATELLITE)		NO

Nov 12, 2020

135

For first time visit and/or new referrals, please contact provider. To obtain Mental Health Information and Services confidentially, please call the 24/7 ACCESS Center Hotline at 1-800-854-7771. (For TDD-TTY, call 1-866-735-2922.) To schedule interpreter services for the hearing impaired (American Sign Language-ASL), please call the 24/7 ACCESS Center Hotline. *MHS refers to individual/group therapy and collateral services. Provider: DMH = Directly-Operated Facility; NGA = Non-Governmental Agency (Contractor); FFS = Fee-for-Service.

Attestation

Provider Number	Provider Name	Attestation Received - YES	Attestation Received - NO
6864	AUGUSTUS F. HAWKINS MENTAL HEALTH CENTER, WOMAN'S CLINIC (SATELLITE)		NO
6870	LOS ANGELES CHILD GUIDANCE CLINIC	YES	
7012	OFFICE OF THE PUBLIC GUARDIAN		NO
7018	MENTAL HEALTH AMERICA		NO
7019	ALMA FAMILY SERVICES		NO
7019	ALMA FAMILY SERVICES-LONG BEACH		NO
7020	GARDENA SOCIAL ACTIVITY CENTER		NO
7031	WATTS LABOR COMMUNITY ACTION (SATELLITE)		NO
7046	DIDI HIRSCH EXCELSIOR HOUSE		NO
7050	EL CENTRO DE AMISTAD		NO
7057	DOWNTOWN MENTAL HEALTH CENTER		NO
7061	AIDS PROJECT LOS ANGELES		NO
7062	WESTSIDE CENTER FOR INDEPENDENT LIVING (WCIL) INC.		NO
7064	COASTAL ASIAN PACIFIC ISLANDER FAMILY MENTAL HEALTH CENTER		NO
7065	MENTAL HEALTH AMERICA OF LA HOMELESS ASSISTANCE		NO
7068	HILLVIEW MHC, INC.		NO
7072	MENTAL HEALTH COURT LINKAGE PROGRAM		NO
7075	BRIDGES INC. - HACIENDA RETIRADA INC.		NO
7080	KEDREN ACUTE PSYCHIATRIC HOSPITAL & CMHC		NO
7092	HEALTH VIEW BEHAVIORAL SERVICES CENTER		NO
7095	THE HELP GROUP CHILD & FAMILY CENTER		NO
7099	STEP UP ON SECOND STREET-ADULT FCCS-TAY FSP		NO
7100	SAN FERNANDO VALLEY CMHC-CENTER FOR FAMILY		NO

Nov 12, 2020

136

For first time visit and/or new referrals, please contact provider. To obtain Mental Health Information and Services confidentially, please call the 24/7 ACCESS Center Hotline at 1-800-854-7771. (For TDD-TTY, call 1-866-735-2922.) To schedule interpreter services for the hearing impaired (American Sign Language-ASL), please call the 24/7 ACCESS Center Hotline. *MHS refers to individual/group therapy and collateral services. Provider: DMH = Directly-Operated Facility; NGA = Non-Governmental Agency (Contractor); FFS = Fee-for-Service.

Attestation

Provider Number	Provider Name	Attestation Received - YES	Attestation Received - NO
	LIVING		
7101	PACIFIC CLINICS - ASIAN PACIFIC FAMILY CENTER		NO
7103	KOREATOWN YOUTH & COMMUNITY CENTER INC.		NO
7104	AMANECER COMMUNITY COUNSELING SERVICE (SATELLITE)		NO
7104	AMANECER COMMUNITY COUNSELING SERVICES		NO
7106	THE LOS ANGELES GAY & LESBIAN CENTER		NO
7110	DIDI HIRSCH JUMP STREET		NO
7111	1736 FAMILY CRISIS CENTER		NO
7112	SPECIAL SERVICES FOR GROUPS (SSG)		NO
7114	ST. JOSEPH'S CENTER-VENICE/HAMPTON		NO
7121	FOR THE CHILD		NO
7124	SPECIAL SERVICES FOR GROUPS (SSG)		NO
7131	SOCIAL MODEL RECOVERY SYSTEMS - THE RIVER COMMUNITY		NO
7134	LAMP COMMUNITY FRANK RICE ACCESS CENTER		NO
7147	FILIPINO-AMERICAN SERVICE GROUP, INC.		NO
7166	LOS PADRINOS JUVENILE HALL MENTAL HEALTH UNIT		NO
7169	PROVIDENCE SAINT JOHN'S HEALTH CENTER		NO
7173	ENKI LPV MENTAL HEALTH CENTER-LA PUENTE		NO
7174	SAN FERNANDO VALLEY CMHC-CORNERSTONE		NO
7177	SAN FERNANDO VALLEY CMHC-MACDONALD CAREY CENTER		NO
7178	OCEAN PARK-OPCC-DAY BREAK SHELTER, SAFE HAVEN		NO
7184	THE INSTITUTE FOR THE REDESIGN OF LEARNING - ALMANSOR		NO

Nov 12, 2020

137

For first time visit and/or new referrals, please contact provider. To obtain Mental Health Information and Services confidentially, please call the 24/7 ACCESS Center Hotline at 1-800-854-7771. (For TDD-TTY, call 1-866-735-2922.) To schedule interpreter services for the hearing impaired (American Sign Language-ASL), please call the 24/7 ACCESS Center Hotline. *MHS refers to individual/group therapy and collateral services. Provider: DMH = Directly-Operated Facility; NGA = Non-Governmental Agency (Contractor); FFS = Fee-for-Service.

Attestation

Provider Number	Provider Name	Attestation Received - YES	Attestation Received - NO
7186	SSG - ASIAN PACIFIC COUNSELING & TREATMENT CENTER		NO
7187	SSG-METRO COUNSELING CENTER		NO
7191	EDMUND D EDELMAN MENTAL HEALTH CENTER-CHILD AND FAMILY		NO
7194	PACIFIC CLINICS-EL CAMINO MENTAL HEALTH CENTER		NO
7195	CAMP AFFLERBAUGH		NO
7195	CAMP GLEN ROCKEY		NO
7195	CAMP JOSEPH PAIGE		NO
7195	CHALLENGER MENTAL HEALTH UNIT		NO
7196	VISTA DEL MAR CHILD & FAMILY SERVICE		NO
7203	THE SABAN FREE CLINIC		NO
7204	MHA ANTELOPE VALLEY		NO
7207	LONG BEACH ASIAN PACIFIC MENTAL HEALTH PROGRAM		NO
7209	DIDI HIRSCH-INGLEWOOD		NO
7211	LAUSD 97TH STREET SCHOOL MENTAL HEALTH CENTER		NO
7212	MHA VILLAGE INTEGRATED SERVICE		NO
7213	RESIDENTIAL AND BRIDGING SERVICES		NO
7216	SYSTEMWIDE MENTAL ASSESSMENT RESPONSE TEAM (SMART)		NO
7217	METMOBILE CRISIS FIELD UNIT		NO
7218	BARBOUR & FLOYD MEDICAL ASSOCIATES		NO
7220	SOUTH BAY CHILDREN'S HEALTH CENTER		NO
7221	AVIVA FAMILY AND CHILDREN'S SERVICES		NO
7224	PACIFIC CLINICS-ACT-WEST COVINA		NO

Nov 12, 2020

138

For first time visit and/or new referrals, please contact provider. To obtain Mental Health Information and Services confidentially, please call the 24/7 ACCESS Center Hotline at 1-800-854-7771. (For TDD-TTY, call 1-866-735-2922.) To schedule interpreter services for the hearing impaired (American Sign Language-ASL), please call the 24/7 ACCESS Center Hotline. *MHS refers to individual/group therapy and collateral services. Provider: DMH = Directly-Operated Facility; NGA = Non-Governmental Agency (Contractor); FFS = Fee-for-Service.

Attestation

Provider Number	Provider Name	Attestation Received - YES	Attestation Received - NO
7225	CHILD AND FAM GUIDANCE CENTER-PALMDALE		NO
7227	PACIFIC CLINICS-EAST-YOUTH DAY TREATMENT		NO
7229	ALCOTT CENTER FOR MENTAL HEALTH SERVICES	YES	
7231	HILLSIDES FAMILY RESOURCE CENTER		NO
7235	SAN FERNANDO VALLEY CMHC-VICTORY CLUB HOUSE		NO
7241	COUNTYWIDE OLDER ADULT GENESIS FCCS		NO
7242	SCHARP - OASIS HOUSE WELLNESS CENTER		NO
7243	BRIDGES INC.		NO
7244	BRIDGES INC.		NO
7245	HOMES FOR LIFE FOUNDATION		NO
7246	COMMUNITY FAMILY GUIDANCE CENTER, FAMILY AND YOUTH STARS PROGRAM		NO
7247	CHILD & FAMILY GUIDANCE CENTER-BALBOA		NO
7248	EXODUS RECOVERY INC.		NO
7249	THE GUIDANCE CENTER-SAN PEDRO		NO
7250	TELECARE LOS ANGELES ACT OLDER ADULTS		NO
7251	PACIFIC CLINICS		NO
7252	SAN FERNANDO VALLEY CMHC-ADULT FCCS		NO
7253	ENKI EAST LOS ANGELES MHS-COMMERCE		NO
7254	ENKI EAST LOS ANGELES MHS-BELL GARDENS		NO
7255	ENKI - PICO UNION		NO
7257	STAR VIEW ADOLESCENT CENTER		NO
7259	LONG BEACH MET		NO
7262	TELECARE LA-AB34 OUTPATIENT		NO
7264	SHIELDS FOR FAMILIES		NO
7265	LOS ANGELES CHILD GUIDANCE CLINIC - FAMILIES IN	YES	

Nov 12, 2020

139

For first time visit and/or new referrals, please contact provider. To obtain Mental Health Information and Services confidentially, please call the 24/7 ACCESS Center Hotline at 1-800-854-7771. (For TDD-TTY, call 1-866-735-2922.) To schedule interpreter services for the hearing impaired (American Sign Language-ASL), please call the 24/7 ACCESS Center Hotline. *MHS refers to individual/group therapy and collateral services. Provider: DMH = Directly-Operated Facility; NGA = Non-Governmental Agency (Contractor); FFS = Fee-for-Service.

Attestation

Provider Number	Provider Name	Attestation Received - YES	Attestation Received - NO
	TOUCH		
7268	AVIVA FAMILY AND CHILDREN'S SERVICES		NO
7269	OLIVE CREST TREATMENT CENTERS-WRAPAROUND		NO
7270	HARBOR VIEW COMMUNITY SERVICES CENTER		NO
7272	PACIFIC ASIAN COUNSELING SERVICES		NO
7275	CHILDREN'S INSTITUTE INC.		NO
7276	LOS ANGELES CHILD GUIDANCE CLINIC	YES	
7277	LA CASA PSYCHIATRIC HEALTH FACILITY		NO
7278	HATHAWAY SYCAMORES CHILD AND FAMILY SERVICES		NO
7279	THE GUIDANCE CENTER, COMPTON		NO
7283	TOPANGA WEST GUEST HOME		NO
7284	PACIFIC CLINICS-ACT-EL MONTE		NO
7286	FIVE ACRES		NO
7299	COLLEGE HOSPITAL		NO
7300	CHILDREN'S BUREAU OF SOUTHERN CALIFORNIA		NO
7301	CHILD BUREAU OF SOUTHERN CA-PALMDALE		NO
7302	CHILDREN'S BUREAU OF S CALIFORNIA-SG VALLEY		NO
7303	SCHARP COMPTON		NO
7312	INST. FOR MULTICULTURAL COUNSELING & EDUCATION SERVICES		NO
7320	SAN FERNANDO VALLEY CMHC-TRANSITIONAL YOUTH		NO
7322	SAN FERNANDO VALLEY CMHC-HOMEBOUND		NO
7328	CHILDREN'S INSTITUTE INC.		NO
7329	SSG - OTTP		NO
7330	FOOTHILL FAMILY SERVICES-PASADENA	YES	
7331	FOOTHILL FAMILY SERVICES-WEST COVINA	YES	

Nov 12, 2020

140

For first time visit and/or new referrals, please contact provider. To obtain Mental Health Information and Services confidentially, please call the 24/7 ACCESS Center Hotline at 1-800-854-7771. (For TDD-TTY, call 1-866-735-2922.) To schedule interpreter services for the hearing impaired (American Sign Language-ASL), please call the 24/7 ACCESS Center Hotline. *MHS refers to individual/group therapy and collateral services. Provider: DMH = Directly-Operated Facility; NGA = Non-Governmental Agency (Contractor); FFS = Fee-for-Service.

Attestation

Provider Number	Provider Name	Attestation Received - YES	Attestation Received - NO
7332	HILLSIDES OUTPATIENT		NO
7334	DIDI HIRSCH-MAR VISTA		NO
7335	STAR VIEW COMMUNITY SERVICES		NO
7337	FIVE ACRES		NO
7340	VALLEY COORDINATED CHILDREN'S SERVICES		NO
7341	D'VEAL FAMILY & YOUTH SERVICES		NO
7342	MASADA HOMES		NO
7344	OPTIMIST BOYS HOME AND RANCH, INC. (SATELLITE)		NO
7344	OPTIMIST BOYS HOME AND RANCH, INC. (SATELLITE) BARRY J. NIDORF JUVENILE HALL		NO
7344	OPTIMIST YOUTH HOMES		NO
7344	OPTIMIST YOUTH HOMES (SATELLITE)		NO
7348	1736 FAMILY CRISIS CENTER		NO
7352	PALMDALE DISCOVERY CENTER		NO
7353	PACIFIC CLINICS-ARROYO FSP		NO
7354	SAN FERNANDO VALLEY CMHC-YOUTH & FAMILY CENTER		NO
7355	SAN FERNANDO VALLEY CMHC-YOUTH CONTACT FCCS		NO
7356	PHOENIX HOUSE OF L.A. INC.		NO
7357	DIDI HIRSCH-CULVER PALMS		NO
7358	SAN FERNANDO VALLEY CMHC-AB34		NO
7359	DIDI HIRSCH-METRO CENTER		NO
7360	ENKI-MARGARITA MENDEZ YOUTH AND FAMILY SERVICES		NO
7362	ASIAN PACIFIC-SFV		NO
7365	SHIELDS FOR FAMILIES		NO

Nov 12, 2020

141

For first time visit and/or new referrals, please contact provider. To obtain Mental Health Information and Services confidentially, please call the 24/7 ACCESS Center Hotline at 1-800-854-7771. (For TDD-TTY, call 1-866-735-2922.) To schedule interpreter services for the hearing impaired (American Sign Language-ASL), please call the 24/7 ACCESS Center Hotline. *MHS refers to individual/group therapy and collateral services. Provider: DMH = Directly-Operated Facility; NGA = Non-Governmental Agency (Contractor); FFS = Fee-for-Service.

Attestation

Provider Number	Provider Name	Attestation Received - YES	Attestation Received - NO
7367	STAR VIEW COMMUNITY SERVICES		NO
7368	THE INSTITUTE FOR REDESIGN AND LEARNING - ALMANSOR		NO
7369	SAN FERNANDO VALLEY CMHC-FAMILY LINKS		NO
7371	EL CENTRO AMISTAD-SAN FERNANDO		NO
7374	ROSEMARY CHILDREN'S SERVICES		NO
7377	GAY AND LESBIAN PEER COUNSELING		NO
7378	PACIFIC ASIAN COUNSELING SERVICES SFV		NO
7379	EMERGENCY OUTREACH BUREAU/CRISIS HOMELESS-METRO		NO
7379	SA 4, EMERGENCY OUTREACH/CRISIS HOMELESS		NO
7380	PACIFIC CLINICS - SIERRA FAMILY CENTER		NO
7381	BIENVENIDOS MONTEBELLO OP		NO
7385	EXODUS RECOVERY INC.		NO
7386	PALMDALE MENTAL HEALTH CENTER		NO
7390	CHILD & FAMILY GUIDANCE CENTER		NO
7394	THE HELP GROUP-WEST OUTPATIENT		NO
7396	SCHARP CHILD DAY TREATMENT		NO
7400	SSG - PROJECT 180		NO
7401	PACIFIC CLINICS ON LAKE		NO
7406	TELECARE HOP 7		NO
7407	FOOTHILL FAMILY SERVICES-HUDSON	YES	
7409	SCHARP ADULT SERVICES		NO
7413	CHILD & FAMILY CENTER		NO
7414	UNITED AMERICAN INDIAN INVOLVEMENT		NO
7418	PACIFIC CLINICS		NO

Nov 12, 2020

142

For first time visit and/or new referrals, please contact provider. To obtain Mental Health Information and Services confidentially, please call the 24/7 ACCESS Center Hotline at 1-800-854-7771. (For TDD-TTY, call 1-866-735-2922.) To schedule interpreter services for the hearing impaired (American Sign Language-ASL), please call the 24/7 ACCESS Center Hotline. *MHS refers to individual/group therapy and collateral services. Provider: DMH = Directly-Operated Facility; NGA = Non-Governmental Agency (Contractor); FFS = Fee-for-Service.

Attestation

Provider Number	Provider Name	Attestation Received - YES	Attestation Received - NO
7420	HILLVIEW MHC AB 109		NO
7421	AMERICAN INDIAN COUNSELING CENTER	YES	
7423	DIDI HIRSCH TAPER CENTER		NO
7426	PACIFIC ASIAN COUNSELING SERVICES		NO
7429	FAMILY SERVICES OF SANTA MONICA-VISTA DEL MAR		NO
7430	HERITAGE CLINIC PASADENA	YES	
7432	MASADA HOMES		NO
7433	THE GUIDANCE CENTER		NO
7436	MCKINLEY CHILDREN'S CENTER		NO
7439	PACIFIC CLINICS - CHILDRENS INTENSIVE COMMUNITY SERVICES		NO
7440	D'VEAL FAMILY & YOUTH SERVICES		NO
7441	PACIFIC CLINICS-CHILD & FAMILY - FIELD BASED INTENSIVE CARE		NO
7442	SPECIALIZED FOSTER CARE-PASADENA	YES	
7443	SPECIALIZED FOSTER CARE-METRO NORTH		NO
7444	OPTIMIST YOUTH & FAMILY SERVICES		NO
7445	SAN FERNANDO VALLEY CMHC-CSOC		NO
7446	UCLA TIES FOR ADOPTION		NO
7449	CHILDREN'S HOSPITAL LA-COVENANT		NO
7451	SFVCMHC WRAPAROUND		NO
7452	ENKI YOUTH FAMILY SERVICES-EL MONTE		NO
7453	ETTIE LEE HOMES-POMONA		NO
7455	PENNY LANE CENTERS		NO
7458	JUVENILE COURT MENTAL HEALTH SERVICES		NO
7461	HOMELESS OUTREACH PSYCHIATRIC EVALUATION		NO

Nov 12, 2020

143

For first time visit and/or new referrals, please contact provider. To obtain Mental Health Information and Services confidentially, please call the 24/7 ACCESS Center Hotline at 1-800-854-7771. (For TDD-TTY, call 1-866-735-2922.) To schedule interpreter services for the hearing impaired (American Sign Language-ASL), please call the 24/7 ACCESS Center Hotline. *MHS refers to individual/group therapy and collateral services. Provider: DMH = Directly-Operated Facility; NGA = Non-Governmental Agency (Contractor); FFS = Fee-for-Service.

Attestation

Provider Number	Provider Name	Attestation Received - YES	Attestation Received - NO
	(HOPE)		
7463	FOOTHILL FAMILY SERVICES-EL MONTE	YES	
7465	SHIELDS FOR FAMILIES		NO
7468	SAN ANTONIO MENTAL HEALTH CENTER	YES	
7469	CHILDNET YOUTH & FAMILY SERVICES		NO
7470	GATEWAYS NORMANDIE VILLAGE EAST OP CLINIC		NO
7471	COMMUNITY FAMILY GUIDANCE CENTER		NO
7472	ENKI BOYLE HEIGHTS		NO
7473	CHILD BUREAU OF SOUTHERN CA-LANCASTER DT		NO
7474	MARYVALE		NO
7475	EMERGENCY OUTREACH BUREAU/CRISIS HOMELESS - EDELMAN		NO
7476	SA 6, EMERGENCY OUTREACH BUREAU/CRISIS HOMELESS		NO
7477	EMERGENCY OUTREACH BUREAU/CRISIS HOMELESS - SAN FERNANDO		NO
7478	EMERGENCY OUTREACH BUREAU/CRISIS HOMELESS - AV		NO
7479	CHILD AND FAMILY CENTER		NO
7479	CHILD AND FAMILY CENTER. CAMP MUNOZ/MENDENHALL (SATELLITE)	YES	
7480	VIP COMMUNITY MENTAL HEALTH CENTER		NO
7481	STIRLING BEHAVIORAL HEALTH INSTITUTE		NO
7482	MENTAL HEALTH URGENT CARE CENTER @ LONG BEACH		NO
7483	COUNSELING4KIDS		NO
7488	CHILDREN'S CENTER OF ANTELOPE VALLEY		NO

Nov 12, 2020

144

For first time visit and/or new referrals, please contact provider. To obtain Mental Health Information and Services confidentially, please call the 24/7 ACCESS Center Hotline at 1-800-854-7771. (For TDD-TTY, call 1-866-735-2922.) To schedule interpreter services for the hearing impaired (American Sign Language-ASL), please call the 24/7 ACCESS Center Hotline. *MHS refers to individual/group therapy and collateral services. Provider: DMH = Directly-Operated Facility; NGA = Non-Governmental Agency (Contractor); FFS = Fee-for-Service.

Attestation

Provider Number	Provider Name	Attestation Received - YES	Attestation Received - NO
7490	THE HELP GROUP-PROJECT SIX		NO
7493	THE STAR VIEW COMMUNITY SERVICES		NO
7494	HAMBURGER HOME - AVIVA FAMILY AND CHILDREN'S SERVICES		NO
7495	PACIFIC CLINICS-LATINA PROGRAM		NO
7502	PACIFIC CLINICS-HYE WRAP PROGRAM		NO
7503	CENTRAL JUVENILE HALL - STAR VIEW ADOLESCENT CENTER INC.		NO
7503	STAR VIEW ADOLESCENT CENTER INC.		NO
7504	HOMES FOR LIFE FOUNDATION		NO
7506	HOMES FOR LIFE FOUNDATION		NO
7509	SPECIALIZED FOSTER CARE-TORRANCE		NO
7510	SSG-HOPICS BEHAVIORAL HEALTH SERVICES		NO
7511	PENNY LANE: COMMERCE		NO
7515	NEW DIRECTIONS INCORPORATED		NO
7516	COUNSELING 4 KIDS-TORRANCE		NO
7517	SSG - ASIAN PACIFIC COUNSELING & TREATMENT CENTER		NO
7519	CA HISPANIC COMMISSION ALCOHOL & DRUG ABUSE		NO
7520	LINCOLN HEIGHTS FAMILY RECOVERY CENTER		NO
7521	BHS HOLLYWOOD RECOVERY CENTER		NO
7522	TARZANA TREATMENT CENTER INC.		NO
7525	STEP UP ON SECOND STREET-DANIEL'S PLACE		NO
7526	STEP UP ON SECOND STREET-ADULT FCCS-TAY FSP		NO
7527	SPIRIT FAMILY SERVICES KEYS		NO
7528	ASIAN AMERICAN DRUG ABUSE PROGRAM (AADAP)		NO

Nov 12, 2020

145

For first time visit and/or new referrals, please contact provider. To obtain Mental Health Information and Services confidentially, please call the 24/7 ACCESS Center Hotline at 1-800-854-7771. (For TDD-TTY, call 1-866-735-2922.) To schedule interpreter services for the hearing impaired (American Sign Language-ASL), please call the 24/7 ACCESS Center Hotline. *MHS refers to individual/group therapy and collateral services. Provider: DMH = Directly-Operated Facility; NGA = Non-Governmental Agency (Contractor); FFS = Fee-for-Service.

Attestation

Provider Number	Provider Name	Attestation Received - YES	Attestation Received - NO
7530	TOBINWORLD	YES	
7534	OLIVE CREST		NO
7534	OLIVE CREST TREATMENT CENTERS-WRAPAROUND		NO
7535	DREW CHILD DEVELOPMENT CORPORATION		NO
7536	SHIELDS FOR FAMILIES-SCHOOL BASED		NO
7538	ST. ANNE'S		NO
7539	ALAFIA MENTAL HEALTH INSTITUTE		NO
7540	ALAFIA MENTAL HEALTH INSTITUTE		NO
7541	OPTIMIST YOUTH HOMES-PALMDALE		NO
7542	PERSONAL INVOLVEMENT CENTER		NO
7543	LA CASA MHC		NO
7545	CENTER FOR INTEGRATED FAMILY AND HEALTH SERVICES		NO
7545	CENTER FOR INTEGRATED FAMILY AND HEALTH SERVICES - HOLLAND MIDDLE SCHOOL		NO
7545	CENTER FOR INTEGRATED FAMILY AND HEALTH SERVICES - JONES JR. HIGH SCHOOL		NO
7545	CENTER FOR INTEGRATED FAMILY AND HEALTH SERVICES - OLIVE MIDDLE SCHOOL		NO
7545	CENTER FOR INTEGRATED FAMILY AND HEALTH SERVICES -SIERRA VISTA JR. HIGH SCHOOL		NO
7546	PARA LOS NINOS		NO
7547	INST. FOR MULTICULTURAL COUNSELING AND EDUCATION SRVS., INC.		NO
7549	STEP OUT		NO
7552	TRINITY		NO
7555	SCHARP- ADULT OUTPATIENT SERVICES		NO

Nov 12, 2020

146

For first time visit and/or new referrals, please contact provider. To obtain Mental Health Information and Services confidentially, please call the 24/7 ACCESS Center Hotline at 1-800-854-7771. (For TDD-TTY, call 1-866-735-2922.) To schedule interpreter services for the hearing impaired (American Sign Language-ASL), please call the 24/7 ACCESS Center Hotline. *MHS refers to individual/group therapy and collateral services. Provider: DMH = Directly-Operated Facility; NGA = Non-Governmental Agency (Contractor); FFS = Fee-for-Service.

Attestation

Provider Number	Provider Name	Attestation Received - YES	Attestation Received - NO
7557	HATHAWAY SYCAMORES CHILD & FAMILY SERVICES		NO
7558	AFH - CRISIS RESOLUTION SERVICES		NO
7559	SPECIALIZED FOSTER CARE-SANTA CLARITA	YES	
7561	PACIFIC CLINICS-BONITA FAMILY SERVICE CENTER		NO
7562	ALMA FAMILY SERVICES		NO
7563	SAN GABRIEL CHILDREN'S CENTER		NO
7564	THE VILLAGE FAMILY SERVICES		NO
7567	PASADENA UNIFIED SCHOOL DISTRICT		NO
7570	CHILDREN'S BUREAU		NO
7572	LOS PADRONES JUVENILE HALL-PATHWAY COMMUNITY SERVICES		NO
7572	PROVIDENCE COMMUNITY SERVICES		NO
7573	SHIELDS FOR FAMILIES		NO
7574	HELPLINE YOUTH COUNSELING INC.		NO
7576	MENTAL HEALTH AMERICA OF LOS ANGELES WELLNES CENTER		NO
7577	KEDREN COMMUNITY MENTAL HEALTH CLINIC		NO
7579	ASIAN PACIFIC COUNSELING & TREATMENT CENTER		NO
7581	EL CENTRO DEL PUEBLO INC.	YES	
7584	ROYBAL SCHOOL BASED PROGRAM		NO
7586	CHILDREN'S HOSPITAL-LA QUEENSCARE HEALTH AND FAITH		NO
7588	EMERGENCY OUTREACH BUREAU/CRISIS HOMELESS-EAST		NO
7588	SA7, EMERGENCY OUTREACH BUREAU/CRISIS HOMELESS		NO
7589	ANNE SIPPI CLINIC COMMUNITY SERVICES		NO

Nov 12, 2020

147

For first time visit and/or new referrals, please contact provider. To obtain Mental Health Information and Services confidentially, please call the 24/7 ACCESS Center Hotline at 1-800-854-7771. (For TDD-TTY, call 1-866-735-2922.) To schedule interpreter services for the hearing impaired (American Sign Language-ASL), please call the 24/7 ACCESS Center Hotline. *MHS refers to individual/group therapy and collateral services. Provider: DMH = Directly-Operated Facility; NGA = Non-Governmental Agency (Contractor); FFS = Fee-for-Service.

Attestation

Provider Number	Provider Name	Attestation Received - YES	Attestation Received - NO
7589	ASC TREATMENT GROUP - ANNE SIPPI CLINIC		NO
7590	CALIFORNIA BEHAVIORAL HEALTH		NO
7591	LAC-OLIVE VIEW- MENTAL HEALTH CENTER		NO
7594	CEDAR STREET HOMES		NO
7595	BRIDGES INC.- PROJECT INDEPENDENCE		NO
7596	EMOTIONAL HEALTH ASSOCIATION-SHARE	YES	
7597	SFVCMHC TBS		NO
7599	HATHAWAY-SYCAMORES CHILD AND FAMILY SERVICES, FAIR OAKS PACE		NO
7600	HATHAWAY SYCAMORES CHILD FAMILY SERVICES		NO
7601	HATHAWAY-SYCAMORES CHILD AND FAMILY SERVICES, EN PACE		NO
7602	HATHAWAY-SYCAMORES CHILD AND FAMILY SERVICES		NO
7605	CRITTENTON SERVICES FOR CHILDREN & FAMILIES		NO
7607	SPECIALIZED FOSTER CARE-COMPTON	YES	
7608	SPECIALIZED FOSTER CARE-FIGUEROA		NO
7610	SPECIALIZED FOSTER CARE-PALMDALE	YES	
7611	SPECIALIZED FOSTER CARE-VERMONT		NO
7612	SPECIALIZED FOSTER CARE - WATERIDGE		NO
7614	CHILDREN'S HOSPITAL COMMUNITY MENTAL HEALTH CENTER		NO
7616	SPECIALIZED FOSTER CARE PROGRAM-COMMERCE		NO
7617	SPECIALIZED FOSTER CARE PROGRAM-SANTA FE SPRINGS		NO
7618	SOCIAL MODEL RECOVERY SYSTEMS - THE RIVER COMMUNITY		NO
7619	SPECIAL SERVICES FOR GROUPS API ALLIANCE		NO

Nov 12, 2020

148

For first time visit and/or new referrals, please contact provider. To obtain Mental Health Information and Services confidentially, please call the 24/7 ACCESS Center Hotline at 1-800-854-7771. (For TDD-TTY, call 1-866-735-2922.) To schedule interpreter services for the hearing impaired (American Sign Language-ASL), please call the 24/7 ACCESS Center Hotline. *MHS refers to individual/group therapy and collateral services. Provider: DMH = Directly-Operated Facility; NGA = Non-Governmental Agency (Contractor); FFS = Fee-for-Service.

Attestation

Provider Number	Provider Name	Attestation Received - YES	Attestation Received - NO
7620	SPECIALIZED FOSTER CARE-LANCASTER	YES	
7621	SA 3, EMERGENCY OUTREACH BUREAU/CRISIS HOMELESS - SG		NO
7622	SAN FERNANDO VALLEY CMHC-JUVENILE JUSTICE PROGRAM		NO
7622	SAN FERNANDO VALLEY COMMUNITY MENTAL HEALTH CENTER, INC., - PROBATION CAMP BARRY J. NIDORF JUVENILE HALL		NO
7624	THE HELP GROUP CHILD AND FAMILY CENTER		NO
7625	CHILDREN'S INSTITUTE INC.		NO
7626	AVIVA FAMILY AND CHILDREN'S SERVICES		NO
7636	ST. FRANCIS MEDICAL CENTER		NO
7637	ST. FRANCIS MEDICAL CENTER-CHILD COUNSELING CENTER		NO
7638	CHCADA		NO
7640	FIVE ACRES		NO
7641	TESSIE CLEVELAND COMMUNITY SERVICES		NO
7642	PASADENA COUNCIL ON ALCOHOL AND DRUG DEPENDENCE - SOCIAL MODEL RECOVERY		NO
7643	MHA TAY ACADEMY		NO
7645	HILLSIDES FRC, EP		NO
7646	EXODUS RECOVERY INC. OP		NO
7647	ADULT TELECARE LA SERVICES (ATLAS)		NO
7648	HERITAGE CLINIC FOR SENIORS		NO
7649	TARZANA TREATMENT CENTERS, INC.		NO
7650	TARZANA TREATMENT CENTER		NO
7651	SAN FERNANDO MHS FSP PROGRAM		NO

Nov 12, 2020

149

For first time visit and/or new referrals, please contact provider. To obtain Mental Health Information and Services confidentially, please call the 24/7 ACCESS Center Hotline at 1-800-854-7771. (For TDD-TTY, call 1-866-735-2922.) To schedule interpreter services for the hearing impaired (American Sign Language-ASL), please call the 24/7 ACCESS Center Hotline. *MHS refers to individual/group therapy and collateral services. Provider: DMH = Directly-Operated Facility; NGA = Non-Governmental Agency (Contractor); FFS = Fee-for-Service.

Attestation

Provider Number	Provider Name	Attestation Received - YES	Attestation Received - NO
7654	SCHARP - CHILD OUTPATIENT SERVICES		NO
7655	ALAFIA MENTAL HEALTH INSTITUTION		NO
7657	SSG-PACIFIC ASIAN COUNSELING SERVICES (PACS-LA)		NO
7659	CRITTENTON SERVICES FOR CHILDREN & FAMILIES		NO
7660	CRITTENTON SERVICES FOR CHILDREN & FAMILIES		NO
7661	CRITTENTON SERVICES FOR CHILDREN AND FAMILIES		NO
7667	ALMANSOR CLINICAL SERVICES		NO
7669	HATHAWAY SYCAMORES CHILD AND FAMILY SERVICES		NO
7670	HATHAWAY-SYCAMORES CHILD AND FAMILY SERVICES		NO
7671	GATEWAYS OUTPATIENT PERCY VILLAGE		NO
7672	SOUTH BAY MHS FSP PROGRAM		NO
7677	PC PORTALS MARIPOSA CLUBHOUSE		NO
7678	PC PORTALS WILSHIRE		NO
7679	HERITAGE CLINIC-PALMDALE		NO
7680	SSG-LITTLE TOKYO SERVICE CENTER		NO
7681	SSG WEBER COMMUNITY CENTER		NO
7682	SSG-SAMOAN NATIONAL NURSES ASSOCIATION		NO
7683	SSG-CAMBODIAN ASSOCIATION OF AMERICA		NO
7685	SSG CHINATOWN SERVICE CENTER		NO
7685	SSG-CHINATOWN SERVICE CENTER		NO
7686	SSG-PACS-LONG BEACH		NO
7690	PACIFIC CLINICS PORTALS COMMUNITY CONNECTIONS		NO
7693	JEWISH FAMILY SERVICE OF LOS ANGELES (JFSLA)		NO
7694	JEWISH FAMILY SERVICES OF LOS ANGELES		NO
7697	LOS PADRINOS JUVENILE HALL - PACIFIC CLINICS		NO

Nov 12, 2020

150

For first time visit and/or new referrals, please contact provider. To obtain Mental Health Information and Services confidentially, please call the 24/7 ACCESS Center Hotline at 1-800-854-7771. (For TDD-TTY, call 1-866-735-2922.) To schedule interpreter services for the hearing impaired (American Sign Language-ASL), please call the 24/7 ACCESS Center Hotline. *MHS refers to individual/group therapy and collateral services. Provider: DMH = Directly-Operated Facility; NGA = Non-Governmental Agency (Contractor); FFS = Fee-for-Service.

Attestation

Provider Number	Provider Name	Attestation Received - YES	Attestation Received - NO
7701	HOMELESS OUTREACH AND MOBILE ENGAGEMENT (HOME) TEAM		NO
7702	TIES FOR FAMILIES		NO
7705	SERVICE AREA 3 FULL SERVICE PARTNERSHIP	YES	
7706	DOWNTOWN MENTAL HEALTH CENTER FSP PROGRAM		NO
7707	COMPTON MENTAL HEALTH CENTER		NO
7708	THE INSTITUTE FOR THE REDESIGN OF LEARNING - ALMANSOR		NO
7709	ALMA FAMILY SERVICES		NO
7710	SOCIAL MODEL RECOVERY SYSTEMS - RIVER COMMUNITY DAY TREATMENT		NO
7711	PATHWAYS COMMUNITY SERVICES		NO
7712	ETTIE LEE		NO
7714	VISTA DEL MAR WRAPAROUND SA 8		NO
7715	WOMEN'S REINTEGRATION SERVICES	YES	
7716	ANTELOPE VALLEY KIDZ CONNECTION	YES	
7718	MASADA HOMES		NO
7721	DREW CHILD DEVELOPMENT CORPORATION		NO
7722	CHCADA - CLIENT RUN WELLNESS CENTER		NO
7724	WISE & HEALTHY AGING		NO
7727	JWCH INSTITUTE INC.		NO
7730	EXCEPTIONAL CHILDREN'S FOUNDATION		NO
7731	TRI-CITIES MHC		NO
7733	LOS ANGELES CHILD GUIDANCE CLINIC - BHS LINCOLN HEIGHTS	YES	
7736	CHILDREN'S INSTITUTE INC.		NO
7737	SHIELDS FOR FAMILIES KAY STREET		NO

Nov 12, 2020

151

For first time visit and/or new referrals, please contact provider. To obtain Mental Health Information and Services confidentially, please call the 24/7 ACCESS Center Hotline at 1-800-854-7771. (For TDD-TTY, call 1-866-735-2922.) To schedule interpreter services for the hearing impaired (American Sign Language-ASL), please call the 24/7 ACCESS Center Hotline. *MHS refers to individual/group therapy and collateral services. Provider: DMH = Directly-Operated Facility; NGA = Non-Governmental Agency (Contractor); FFS = Fee-for-Service.

Attestation

Provider Number	Provider Name	Attestation Received - YES	Attestation Received - NO
7738	HARBOR UCLA WELLNESS CENTER		NO
7739	HOLLYWOOD MHC WELLNESS CENTER		NO
7740	SA 8, EMERGENCY OUTREACH BUREAU/CRISIS HOMELESS		NO
7741	HATHAWAY SYCAMORES CHILD AND FAMILY SERVICES		NO
7744	HATHAWAY SYCAMORES CHILD FAMILY SERVICES		NO
7746	WEST VALLEY MHC, FCCS/FSP		NO
7748	PACIFIC CLINICS - HOPE CENTER		NO
7749	UPLIFT FAMILY SERVICES - HOLLYGROVE		NO
7750	UPLIFT FAMILY SERVICES - LYNWOOD		NO
7751	PATHWAYS COMMUNITY SERVICES		NO
7752	SPECIALIZED FOSTER CARE-SOUTH COUNTY		NO
7753	SPECIALIZED FOSTER CARE-GLENDORA	YES	
7754	SPECIALIZED FOSTER CARE-CHATSWORTH		NO
7755	FOOTHILL FAMILY SERVICE DUARTE	YES	
7756	AV WELLNESS & ENRICHMENT CENTER		NO
7757	DOWNTOWN MENTAL HEALTH CENTER - FCCS PROGRAM		NO
7758	SOUTH BAY MENTAL HEALTH SERVICES WELLNESS CENTER		NO
7759	PROJECT 50 MENTAL HEALTH CLINIC		NO
7760	SAN FERNANDO ADULT FCCS		NO
7761	SAN FERNANDO VALLEY COMMUNITY MENTAL HEALTH CENTER, INC-CORNERSTONE STREET TO HOME		NO
7762	ST. JOSEPH'S CENTER-VENICE/LINCOLN		NO
7763	SHIELDS FOR FAMILIES		NO
7764	SHIELDS FOR FAMILIES	YES	

Nov 12, 2020

152

For first time visit and/or new referrals, please contact provider. To obtain Mental Health Information and Services confidentially, please call the 24/7 ACCESS Center Hotline at 1-800-854-7771. (For TDD-TTY, call 1-866-735-2922.) To schedule interpreter services for the hearing impaired (American Sign Language-ASL), please call the 24/7 ACCESS Center Hotline. *MHS refers to individual/group therapy and collateral services. Provider: DMH = Directly-Operated Facility; NGA = Non-Governmental Agency (Contractor); FFS = Fee-for-Service.

Attestation

Provider Number	Provider Name	Attestation Received - YES	Attestation Received - NO
7765	NORTHEAST WELLNESS CENTER		NO
7768	SHIELDS FOR FAMILIES		NO
7769	EDELMAN WELLNESS CENTER		NO
7770	FACTS PROGRAM		NO
7771	HOLLYWOOD MHC FSP PROGRAM		NO
7772	BRIDGES INC. TRUSTART OP		NO
7773	SHARE DOWNTOWN		NO
7774	EXODUS WELLNESS CENTER		NO
7775	D'VEAL FAMILY & YOUTH SERVICES - WRAP		NO
7776	VISTA DEL MAR		NO
7777	EAST SAN GABRIEL VALLEY MENTAL HEALTH		NO
7779	CHILDREN'S INSTITUTE INC.		NO
7780	CHILDREN'S INSTITUTE INC.		NO
7782	CHILDREN'S BUREAU SOCIAL MAGNOLIA PLACE		NO
7783	EXODUS RECOVERY INC.		NO
7784	AMERICAN INDIAN COUNSELING CENTER	YES	
7785	HERITAGE CLINIC MID-CITY		NO
7787	VIP-COMMUNITY MENTAL HEALTH CENTER		NO
7789	UCLA TIES FOR FAMILIES		NO
7790	TESSIE CLEVELAND COMMUNITY SERVICES		NO
7791	VIP CMHC INC-LAC/USC CHILD PSYCHIATRY		NO
7792	MASADA HOMES		NO
7793	TESSIE CLEVELAND COMMUNITY SERVICE		NO
7795	SPECIALIZED FOSTER CARE - WEST LOS ANGELES		NO
7796	EXODUS RECOVERY URGENT CARE CENTER-EASTSIDE		NO

Nov 12, 2020

153

For first time visit and/or new referrals, please contact provider. To obtain Mental Health Information and Services confidentially, please call the 24/7 ACCESS Center Hotline at 1-800-854-7771. (For TDD-TTY, call 1-866-735-2922.) To schedule interpreter services for the hearing impaired (American Sign Language-ASL), please call the 24/7 ACCESS Center Hotline. *MHS refers to individual/group therapy and collateral services. Provider: DMH = Directly-Operated Facility; NGA = Non-Governmental Agency (Contractor); FFS = Fee-for-Service.

Attestation

Provider Number	Provider Name	Attestation Received - YES	Attestation Received - NO
7797	EXODUS RECOVERY INC. WESTSIDE		NO
7798	TRI-CITIES MENTAL HEALTH AUTHORITY		NO
7801	DMH/DHS COLLABORATION-EL MONTE		NO
7803	DMH/DHS COLLABORATION PROGRAM - ROYBAL		NO
7804	DMH-DHS COLLABORATION-LONG BEACH		NO
7805	STEP UP ON HOLLYWOOD		NO
7806	ALMA FAMILY SERVICES		NO
7807	DMH/DHS COLLABORATION		NO
7809	SPECIALIZED FOSTER CARE-EL MONTE	YES	
7810	SPECIALIZED FOSTER CARE	YES	
7811	SPECIALIZED FOSTER CARE	YES	
7812	DIDI HIRSCH PSYCHIATRIC SERVICES-GLENDALE		NO
7813	RIO HONDO CENTRO DE BIENESTAR	YES	
7814	LOS ANGELES UNIFIED SCHOOL DISTRICT, SCHOOL MENTAL HEALTH VALLY CLINIC		NO
7815	MARYVALE		NO
7816	ROSEMARY CHILDREN'S SERVICES		NO
7817	CHILDREN'S INSTITUTE INC.		NO
7818	DMH/DHS COLLABORATION - MID VALLEY		NO
7819	ALMA FAMILY SERVICES		NO
7820	OCEAN PARK COMMUNITY CENTER		NO
7821	JUVENILE JUSTICE TRANSITIONAL AFTERCARE SERVICES	YES	
7822	MASADA HOMES		NO
7824	SCHARP - BELLFLOWER		NO
7825	KOREAN AMERICAN FAMILY SERVICES		NO

Nov 12, 2020

154

For first time visit and/or new referrals, please contact provider. To obtain Mental Health Information and Services confidentially, please call the 24/7 ACCESS Center Hotline at 1-800-854-7771. (For TDD-TTY, call 1-866-735-2922.) To schedule interpreter services for the hearing impaired (American Sign Language-ASL), please call the 24/7 ACCESS Center Hotline. *MHS refers to individual/group therapy and collateral services. Provider: DMH = Directly-Operated Facility; NGA = Non-Governmental Agency (Contractor); FFS = Fee-for-Service.

Attestation

Provider Number	Provider Name	Attestation Received - YES	Attestation Received - NO
7826	SCHARP - LYNWOOD		NO
7827	WESLEY HEALTH CENTERS		NO
7828	THE SABAN FREE CLINIC		NO
7829	EISNER PEDIATRIC FAMILY MEDICAL CENTER		NO
7830	JWCH WESLEY HEALTH CENTERS		NO
7832	TARZANA TREATMENT CENTERS, INC.		NO
7833	TARZANA TREATMENT CENTERS, INC.		NO
7834	ASIAN PACIFIC HEALTH CARE VENTURE - INNOVATIONS		NO
7835	SSG AVRC		NO
7835	SSG-AVRC - ANTELOPE VALLEY		NO
7836	JUNIOR BLIND OF AMERICA		NO
7837	TELECARE IMD STEP-DOWN		NO
7838	EL DORADO - INGLEWOOD		NO
7841	DMH/DHS COLLABORATION - MLK MACC		NO
7842	ST. JOSEPH'S CENTER-SANTA MONICA		NO
7843	CHILDREN'S HOSPITAL LOS ANGELES		NO
7844	TELECARE LOS ANGELES - AB 109		NO
7846	CHILDREN'S INSTITUTE, INC.		NO
7847	OCEAN PARK COMMUNITY CENTER		NO
7849	HELPLINE YOUTH COUNSELING INC.		NO
7850	UNIVERSITY MUSLIM MEDICAL ASSOCIATION (UMMA)		NO
7851	THE VILLAGE FAMILY SERVICES		NO
7852	MASADA HOMES		NO
7854	FOR THE CHILD, INC. OP		NO
7855	PENNY LANE CENTERS		NO

Nov 12, 2020

155

For first time visit and/or new referrals, please contact provider. To obtain Mental Health Information and Services confidentially, please call the 24/7 ACCESS Center Hotline at 1-800-854-7771. (For TDD-TTY, call 1-866-735-2922.) To schedule interpreter services for the hearing impaired (American Sign Language-ASL), please call the 24/7 ACCESS Center Hotline. *MHS refers to individual/group therapy and collateral services. Provider: DMH = Directly-Operated Facility; NGA = Non-Governmental Agency (Contractor); FFS = Fee-for-Service.

Attestation

Provider Number	Provider Name	Attestation Received - YES	Attestation Received - NO
7856	STAR VIEW COMMUNITY SERVICES, CARSON CENTER		NO
7857	THE VILLAGE FAMILY SERVICES		NO
7858	PACIFIC CLINIC - CENTRO FAMILIAR - EL MONTE		NO
7860	HACIENDA OF HOPE, PRRCH COS		NO
7861	EGGLESTON YOUTH CENTER INC.		NO
7862	HAYNES FAMILY OF PROGRAMS, INC.		NO
7863	ALMA FAMILY SERVICES		NO
7864	PENNY LANE CENTERS		NO
7865	VETERANS AND LOVED ONES RECOVERY (VALOR)		NO
7866	THE WHOLE CHILD		NO
7868	DIDI HIRSCH PSYCHIATRIC SERVICES - PROJECT 60		NO
7870	SHARE, PRRCH		NO
7871	EXODUS RECOVERY INC.,		NO
7872	D'VEAL FAMILY & YOUTH SERVICES		NO
7873	D'VEAL FAMILY & YOUTH SERVICES		NO
7874	D'VEAL FAMILY & YOUTH SERVICES		NO
7875	ALMA FAMILY SERVICES		NO
7876	KEDREN COMMUNITY MENTAL HEALTH CENTER		NO
7877	BURBANK MENTAL HEALTH EVALUATION TEAM		NO
7878	D'VEAL FAMILY & YOUTH SERVICES		NO
7879	VIP COMMUNITY MENTAL HEALTH CENTER, INC.		NO
7880	D'VEAL FAMILY & YOUTH SERVICES		NO
7881	SSG PROJECT 180 NORTH		NO
7882	TARZANA TREATMENT CENTERS		NO
7883	HILLSIDES FAMILY RESOURCE CENTER EAST SAN GABRIEL VALLEY		NO

Nov 12, 2020

156

For first time visit and/or new referrals, please contact provider. To obtain Mental Health Information and Services confidentially, please call the 24/7 ACCESS Center Hotline at 1-800-854-7771. (For TDD-TTY, call 1-866-735-2922.) To schedule interpreter services for the hearing impaired (American Sign Language-ASL), please call the 24/7 ACCESS Center Hotline. *MHS refers to individual/group therapy and collateral services. Provider: DMH = Directly-Operated Facility; NGA = Non-Governmental Agency (Contractor); FFS = Fee-for-Service.

Attestation

Provider Number	Provider Name	Attestation Received - YES	Attestation Received - NO
7884	CA HISPANIC COMMISSION ALCOHOL & DRUG ABUSE - ROOSEVELT ISHC		NO
7885	TARZANA TREATMENT CENTERS		NO
7887	JWCH INSTITUTE INC. - CENTER FOR COMMUNITY HEALTH		NO
7888	JWCH INSTITUTE-NORWALK REGIONAL HEALTH CENTER		NO
7889	AVIVA FAMILY AND CHILDREN'S SERVICES		NO
7890	EXODUS URGENT CARE CENTER (UCC) - 23 HOUR PSYCHIATRIC CRISIS CENTER		NO
7891	BAYFRONT YOUTH AND FAMILY SERVICES		NO
7892	DMH-DHS COLLABORATION-LONG BEACH		NO
7893	ALMA FAMILY SERVICES		NO
7894	EL DORADO-VAN NUYS MEDICAL		NO
7895	DAVID & MARGARET HOMES		NO
7896	PACIFIC CLINICS - WHITTIER FAMILY CENTER		NO
7897	ELDORADO MEDICAL AND MENTAL HEALTH SERVICES-LAWNDALE		NO
7898	SHIELDS FOR FAMILIES		NO
7899	ELDORADO PALMDALE		NO
7900	NEW DIRECTION VETS, OASIS FOR WOMEN		NO
7902	PACIFIC CLINICS - CENTRO FAMILIA		NO
7903	PACIFIC CLINICS - EL CAMINO		NO
7904	DOWNTOWN MHC		NO
7905	DOWNTOWN MENTAL HEALTH CENTER - CALWORKS PROGRAM		NO
7906	SCHOOL THREAT ASSESSMENT RESPONSE TEAM (START) PROGRAM		NO

Nov 12, 2020

157

For first time visit and/or new referrals, please contact provider. To obtain Mental Health Information and Services confidentially, please call the 24/7 ACCESS Center Hotline at 1-800-854-7771. (For TDD-TTY, call 1-866-735-2922.) To schedule interpreter services for the hearing impaired (American Sign Language-ASL), please call the 24/7 ACCESS Center Hotline. *MHS refers to individual/group therapy and collateral services. Provider: DMH = Directly-Operated Facility; NGA = Non-Governmental Agency (Contractor); FFS = Fee-for-Service.

Attestation

Provider Number	Provider Name	Attestation Received - YES	Attestation Received - NO
7909	NEW DIRECTION VETS		NO
7910	PERSONAL INVOLVEMENT CENTER		NO
7911	EXODUS RECOVERY INC. MLK-ICC		NO
7912	THE WHOLE CHILD - BIRTH TO FIVE CENTER		NO
7913	LAC-OLIVE VIEW-URGENT CARE CENTER		NO
7915	PACIFIC CLINIC - LIFE PROGRAM		NO
7916	MLK MEDICAL HUB		NO
7917	SA 6 SB82 MOBILE TRIAGE TEAM		NO
7918	PROJECT RETURN		NO
7919	PROJECT RETURN; HOPEWELL		NO
7920	PROJECT RETURN; HACIENDA OF HOPE		NO
7921	SA 3 SB82 MOBILE TRIAGE TEAM	YES	
7922	SA 2 SB82 MOBILE TRIAGE TEAM		NO
7924	SA 4 MOBILE TRIAGE TEAM		NO
7925	HILLSIDE FAMILY RESOURCE CENTER-POMONA		NO
7926	ASSISTED OUTPATIENT TREATMENT		NO
7927	TOPANGA WEST, ACT HEALTH AND WELLNESS CLINIC		NO
7928	ASSISTED OUTPATIENT TREATMENT-LITTLE TOKYO		NO
7929	SA 7 SB82 MOBILE TRIAGE TEAM	YES	
7930	OLIVE VIEW MEDICAL CENTER HUB		NO
7931	HIGH DESERT REGIONAL MEDICAL CENTER		NO
7933	SA1 SB82 MOBILE TRIAGE TEAM		NO
7934	SA 5 SB82 MOBILE TRIAGE TEAM		NO
7935	SA 8 SB82 MOBILE TRIAGE TEAM		NO
7936	HAMBURGER HOME: AVIVA FAMILY AND CHILDREN'S SERVICES		NO

Nov 12, 2020

158

For first time visit and/or new referrals, please contact provider. To obtain Mental Health Information and Services confidentially, please call the 24/7 ACCESS Center Hotline at 1-800-854-7771. (For TDD-TTY, call 1-866-735-2922.) To schedule interpreter services for the hearing impaired (American Sign Language-ASL), please call the 24/7 ACCESS Center Hotline. *MHS refers to individual/group therapy and collateral services. Provider: DMH = Directly-Operated Facility; NGA = Non-Governmental Agency (Contractor); FFS = Fee-for-Service.

Attestation

Provider Number	Provider Name	Attestation Received - YES	Attestation Received - NO
7937	VISTA DEL MAR WRAPAROUND SA 6		NO
7938	TORRANCE MET		NO
7939	BAYFRONT YOUTH AND FAMILY SERVICES		NO
7940	TESSIE CLEVELAND COM SERVICES		NO
7941	SPIRITT FAMILY SERVICES		NO
7942	ASPIRANET 8		NO
7943	INSTITUTE FOR FAMILY CENTERED SERVICES, DBA CA MENTOR		NO
7944	INSTITUTE FOR FAMILY CENTERED SERVICES, DBA CA MENTOR		NO
7945	AMANECER COMMUNITY COUSELING SERVICE		NO
7946	SOUTH EAST REGION MET		NO
7946	SOUTHEAST REGION MET		NO
7947	HOMELESS INNOVATION PROJECT		NO
7948	ROSEMARY CHILDREN'S SERVICES		NO
7949	SPECIALIZED FOSTER CARE-VAN NUYS	YES	
7950	STAR VIEW BEHAVIORAL HEALTH, INC.		NO
7951	STAR VIEW BEHAVIORAL HEALTH, INC.		NO
7952	STAR VIEW BEHAVIORAL HEALTH		NO
7953	THE HELP GROUP CHILD AND FAMILY		NO
7954	PERSONAL INVOLVEMENT CENTER, INC.		NO
7955	WEST CENTRAL WELL AND FIELD BASE TEAM		NO
7955	WEST CENTRAL WELLNESS AND FIELD BASED SERVICES		NO
7956	ST. ANNE'S AT CRENSHAW DISTRICT		NO
7957	GATEWAYS CHILD AND ADOLESCENT OUTPATIENT PROGRAM		NO

Nov 12, 2020

159

For first time visit and/or new referrals, please contact provider. To obtain Mental Health Information and Services confidentially, please call the 24/7 ACCESS Center Hotline at 1-800-854-7771. (For TDD-TTY, call 1-866-735-2922.) To schedule interpreter services for the hearing impaired (American Sign Language-ASL), please call the 24/7 ACCESS Center Hotline. *MHS refers to individual/group therapy and collateral services. Provider: DMH = Directly-Operated Facility; NGA = Non-Governmental Agency (Contractor); FFS = Fee-for-Service.

Attestation

Provider Number	Provider Name	Attestation Received - YES	Attestation Received - NO
7958	EXODUS RECOVERY, INC		NO
7959	PC MULTICULTURAL FAMILY CENTER		NO
7961	OPCC AND LAMP COMMUNITY, INC		NO
7962	OPCC AND LAMP COMMUNITY, INC		NO
7964	OLIVE CREST		NO
7966	INSTITUTE FOR FAMILY CENTERED SERVICES, DBA CA MENTOR		NO
7967	INSTITUTE FOR FAMILY CENTERED SERVICES, DBA CA MENTOR		NO
7968	AVIVA CHILD AND FAMILY SERVICES		NO
7969	AVIVA CHILD AND FAMILY SERVICES		NO
7970	AVIVA CHILD AND FAMILY SERVICES		NO
7971	SAN FERNANDO VALLEY COMMUNITY MENTAL HEALTH CENTER, INC.,- MILESTONES		NO
7972	INSTITUTE FOR FAMILY CENTERED SERVICES (CA MENTOR)		NO
7973	CHILD AND FAMILY GUIDANCE CENTER		NO
7974	LAUSD LOCKE WELLNESS CENTER		NO
7975	EL CENTRO DE AMISTAD - TOPANGA		NO
7976	SOCIAL MODEL RECOVERY SYSTEM, INC. - OMNI CENTER		NO
7977	ENKI YOUTH AND FAMILY SERVICES-WEST COVINA		NO
7978	DAVID AND MARGARET HOMES		NO
7978	VIP SMIDT TECH HIGH SCHOOL		NO
7979	HARBOR-UCLA K.I.D.S HUB		NO
7980	CHILD AND FAMILY GUIDANCE CENTER		NO
7981	SSG KYCC		NO

Nov 12, 2020

160

For first time visit and/or new referrals, please contact provider. To obtain Mental Health Information and Services confidentially, please call the 24/7 ACCESS Center Hotline at 1-800-854-7771. (For TDD-TTY, call 1-866-735-2922.) To schedule interpreter services for the hearing impaired (American Sign Language-ASL), please call the 24/7 ACCESS Center Hotline. *MHS refers to individual/group therapy and collateral services. Provider: DMH = Directly-Operated Facility; NGA = Non-Governmental Agency (Contractor); FFS = Fee-for-Service.

Attestation

Provider Number	Provider Name	Attestation Received - YES	Attestation Received - NO
7982	AMET		NO
7983	ALMA FAMILY SERVICES		NO
7984	SA 5, CCMET		NO
7985	SSG SILVER		NO
7986	EL CENTRO DEL PUEBLO, INC.	YES	
7987	SA 5,SMMET		NO
7988	GARDENA/HAWTHORNE GHMET		NO
7989	PERSONAL INVOLVEMENT CENTER, INC.		NO
7990	PROTOTYPES OBHS POMONA		NO
7991	SA 3, POMONA PMET		NO
7992	PROTOTYPES OBHS PASADENA		NO
7993	SA 3, MONTEREY PARK MPMET		NO
7994	PROTOTYPES OBHS WELLNESS CENTER		NO
7995	MENS COMMUNITY REINTEGRATION PROGRAM		NO
7996	INSTITUTE FOR FAMILY CENTERED SERVICES, DBA CA MENTOR		NO
7997	MONTEBELLO MMET		NO

Nov 12, 2020

161

For first time visit and/or new referrals, please contact provider. To obtain Mental Health Information and Services confidentially, please call the 24/7 ACCESS Center Hotline at 1-800-854-7771. (For TDD-TTY, call 1-866-735-2922.) To schedule interpreter services for the hearing impaired (American Sign Language-ASL), please call the 24/7 ACCESS Center Hotline. *MHS refers to individual/group therapy and collateral services. Provider: DMH = Directly-Operated Facility; NGA = Non-Governmental Agency (Contractor); FFS = Fee-for-Service.