

▶▶ 2019 LACDMH Provider Directory

Locations of Publicly Funded Mental Health Services
in Los Angeles County

Provider Directory - 2019

Locations of Publicly Funded Mental Health Services in the County of Los Angeles

The 2019 Provider Directory of Publicly Funded Mental Health Providers is a service location guide for mental health services. The Directory lists services available at Psychiatric Inpatient and Outpatient Short Doyle/Medi-Cal Facilities, Community Outreach, and Residential Facilities. The Provider Directory does not list service locations of Outpatient Fee-For-Service network providers.

The Provider Directory lists Provider Name, Address, Phone Number, Hours of Operation, Types of Specialty Mental Health Services (SMHS), Age Groups Served, Languages/Cultures, Provider Numbers, and Non-Governmental Agency (NGA) Designation. Providers are listed alphabetically within each Organizational classification such as 24 Hour/Residential, Community Outreach, Crisis Services, Day Services, Juvenile Justice, and Outpatient. The Provider Directory is a resource to search for service providers in areas nearest to clients and providers. Providers are listed alphabetically by name and the primary mode of service.

The Providers listed in the Provider Directory can also be located on the internet using the Online DMH Provider Locator at: <http://maps.lacounty.gov/dmhSL/>. To use the Online DMH provider Locator, type the complete address of your location in the website address window and click on "Search." The Online DMH Provider Locator will show the nearest locations on the map on the left side of the screen. Also shown will be the distance from your "Search" location and driving directions. Information on the Online Provider Locator can be translated into 90 or more languages.

In 2013, the LACDMH Service Area Provider Directories were revised to include the category of **cultures**. The new category now reads as **languages/cultures**. This additional highlights information on culturally and linguistically competent mental health services offered at service locations within our system of care. The listing of services under the category of **languages/cultures** aims to facilitate the ease with which consumers, family members, community members, and other stakeholders can locate mental health services that accommodate their individual preferences and needs. The Directories are also a resource to staff when seeking providers with cultural and linguistic competencies. Additional information on the definition and elements of culture and the National Culturally and Linguistically Appropriate Services (CLAS) Standards can be found at the US Department of Health and Human Services webpage on CLAS at: <https://www.thinkculturalhealth.hhs.gov/pdfs/EnhancedCLASStandardsBlueprint.pdf>

Age-Group Served by Providers: The age-groups served by providers are: Child, TAY (Transitional Age Youth), Adult, and Older Adult. Providers serving Children serve consumers between the ages of 0 and 17. Providers serving TAY serve consumers between the ages of 16 and 25. Providers serving Adults serve consumers between the ages of 18 and 59. Providers serving Older Adults serve consumers 60 years of older.

Contact Us: Every effort is made to ensure the information in the Service Area Provider Directory is accurate and current. However, information changes frequently and the Program Support Bureau, Quality Improvement Division, Data-GIS Unit will make the best effort to ensure the

For first time visit and/or new referrals, please contact provider. To obtain Mental Health Information and Services confidentially, please call the 24/7 ACCESS Center Hotline at 1-800-854-7771. (For TDD-TTY, call 1-866-735-2922.) To schedule interpreter services for the hearing impaired (American Sign Language-ASL), please call the 24/7 ACCESS Center Hotline. *MHS refers to individual/group therapy and collateral services. Provider: DMH = Directly-Operated Facility; NGA = Non-Governmental Agency (Contractor); FFS = Fee-for-Service.

Provider Directory - 2019
Locations of Publicly Funded Mental Health Services in the County of Los Angeles

information is accurate and current. **Corrections or questions pertaining to the provider information contained in this directory can also be emailed to:**

ProviderDirectory@dmh.lacounty.gov

This Provider Directory can be downloaded from the website at:

<http://psbqi.dmh.lacounty.gov/providerdirectory.htm>

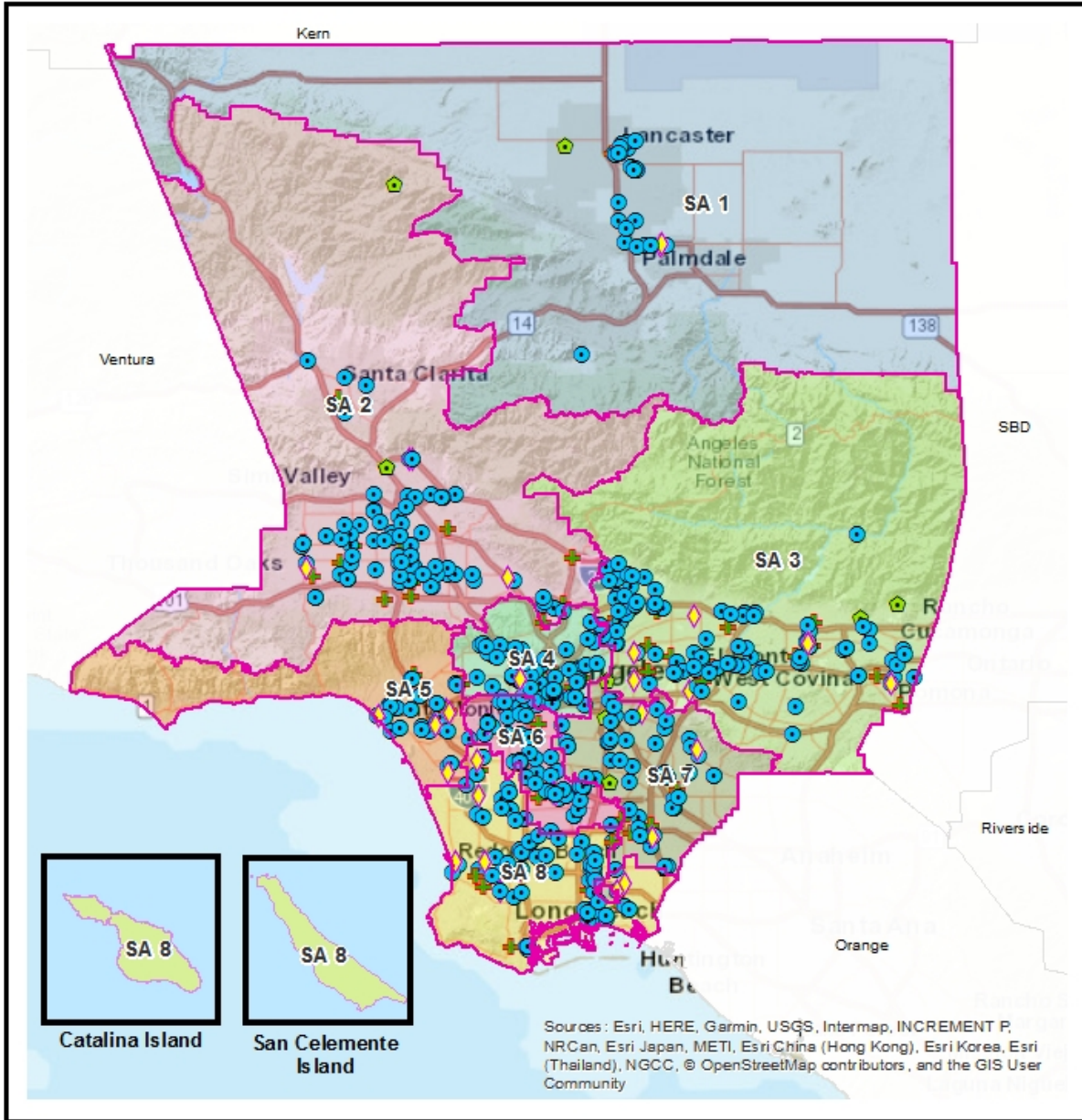
For first time visit and/or new referrals, please contact provider. To obtain Mental Health Information and Services confidentially, please call the 24/7 ACCESS Center Hotline at 1-800-854-7771. (For TDD-TTY, call 1-866-735-2922.) To schedule interpreter services for the hearing impaired (American Sign Language-ASL), please call the 24/7 ACCESS Center Hotline. *MHS refers to individual/group therapy and collateral services. Provider: DMH = Directly-Operated Facility; NGA = Non-Governmental Agency (Contractor); FFS = Fee-for-Service.

Overview Map



Mental Health Service Providers Los Angeles County Department of Mental Health

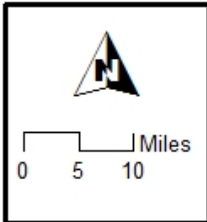
LOS ANGELES COUNTY
DEPARTMENT OF MENTAL HEALTH
hope. recovery. wellbeing.



Sources: Esri, HERE, Garmin, USGS, Intermap, INCREMENT P, NRCan, Esri Japan, METI, Esri China (Hong Kong), Esri Korea, Esri (Thailand), NGCC, © OpenStreetMap contributors, and the GIS User Community

Provider Type:	
	24 HOUR RESIDENTIAL
	CRISIS SERVICES
	JUVENILE JUSTICE
	OUTPATIENT

DMH Service Area:	
	SA 1
	SA 5
	SA 2
	SA 6
	SA 3
	SA 7
	SA 4
	SA 8



Note:
Data Source:
Provider data from DMH:
PSB - Quality Improvement Division
Geographic data from eGIS
Repository.
All rights reserved.
Tuesday, March 27, 2018

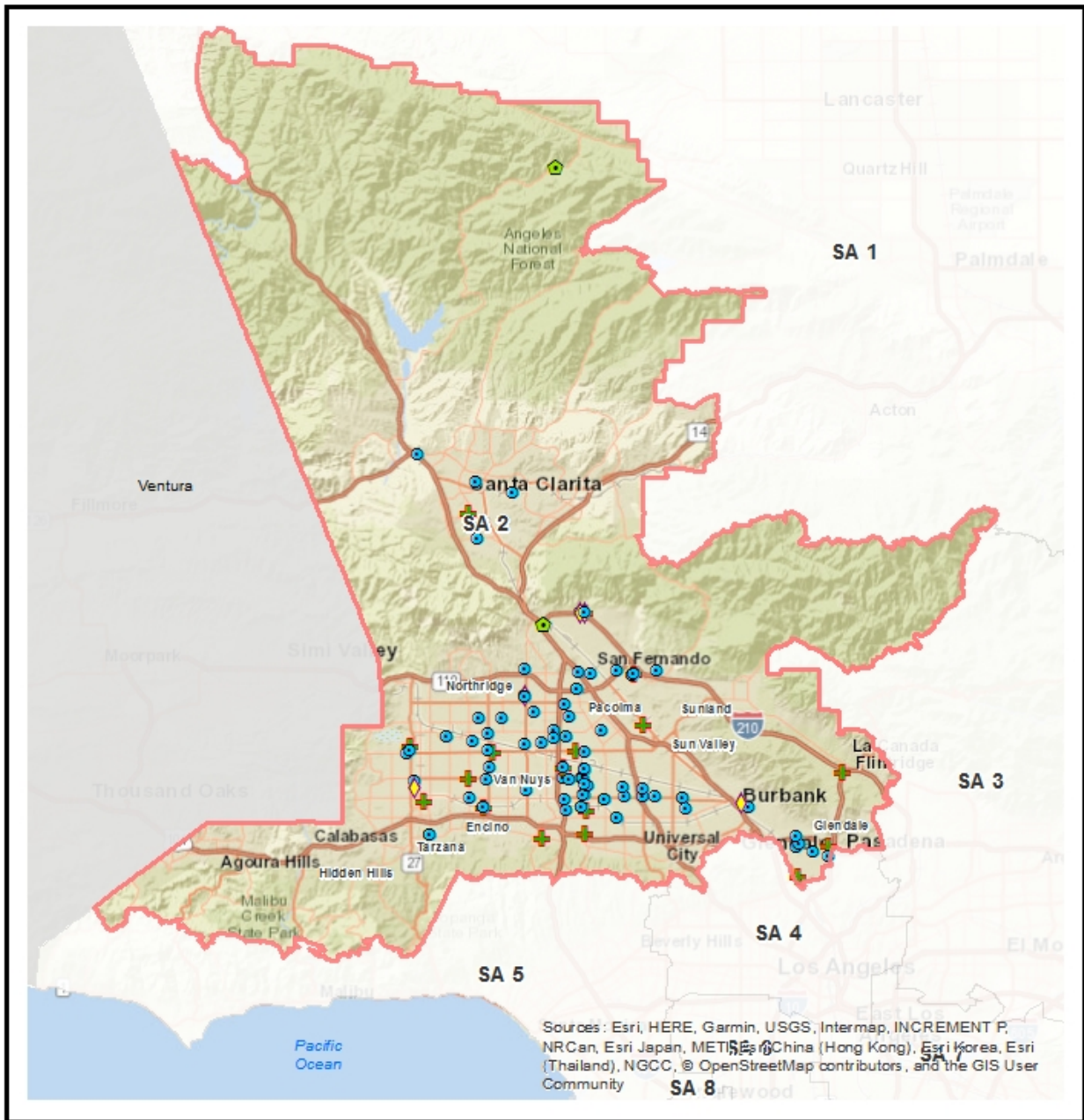


Mental Health Service Providers

Service Area 2

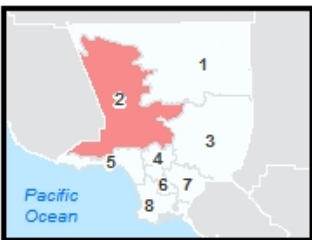
Los Angeles County Department of Mental Health

LOS ANGELES COUNTY
DEPARTMENT OF
MENTAL HEALTH
hope. recovery. wellbeing.



Provider Type:

- 24 HOUR RESIDENTIAL
- CRISIS SERVICES
- JUVENILE JUSTICE
- OUTPATIENT



Miles
0 3 6

Note:
Data Source:
Provider data from DMH:
PSB - Quality Improvement Division
Geographic data from eGIS
Repository.
All rights reserved.

Tuesday, March 27, 2018

Service Area 2

19B4 19B4 Children's Bureau Valencia
27200 Tourney Road
Valencia, CA 91355-4990

Phone: 661-705-4670

Hours of Operation: MON - FRI, 8:30 AM - 7 PM

Accepting Beneficiaries: No

Accessible By:

Provider:

Supervisory District: 5

Age Group Served: 0-20

Languages: English, Spanish,

Cultures:

Programs/Services:

ADA Facility: Yes

Website: www.all4kids.org

Email:

List of Practitioners

Not Available

Service Area 2

**7340B 7340 VALY COORDINATED CHILDRN SRVCS
19231 VICTORY BLVD
RESEDA, CA 91335-6321**

Phone: (818) 708 4500

Hours of Operation: MON - FRI, 8:00 AM - 6:30 PM

Accepting Beneficiaries: Yes

Accessible By: Phone Only

Provider:

Supervisory District: 3

Age Group Served: 0-20

Languages: English, Farsi, Spanish, Vietnamese

Cultures: Race Ethnicity, Under Represented Populations,

Programs/Services:

ADA Facility: Yes

Website: www.dmh.lacounty.gov

Email:

List of Practitioners

Not Available

Service Area 2

**7628 7628 DMH SA 2 NAVIGATION TEAM
6800 OWENSMOUTH AVE
CANOGA PARK, CA 91303-4255**

Phone: 818-610-6750

Hours of Operation: Call for Hours

Accepting Beneficiaries: No

Accessible By:

Provider: DO

Supervisory District: 3

Age Group Served: All Ages

Languages: English,

Cultures:

Programs/Services:

ADA Facility: No

Website: www.dmh.lacounty.gov

Email:

List of Practitioners

Not Available

Service Area 2

7649A 7649A TARZANA TREATMENT CENTERS INC
18646 Oxnard Street
TARZANA, CA 91356-1411

Phone:

Hours of Operation: MON - FRI 8:00 AM - 5:00 PM

Accepting Beneficiaries: Yes

Accessible By:

Provider:

Supervisory District: 3

Age Group Served: All Ages

Languages: English, Spanish,

Cultures: Co-occurring Substance Use Disorders, Forensic Legal, Race
Ethnicity, Trauma, Under Represented Populations, Veterans,

Programs/Services:

ADA Facility: No

Website: www.tarzanatc.org

Email:

List of Practitioners

Not Available

Service Area 2

**7894A 7894 EL DORADO - VAN NUYS
6265 SEPULVEDA BLVD
VAN NUYS, CA 91411-1114**

Phone: 818-779-0555

Hours of Operation: M-F 8:00AM - 5:00PM

Accepting Beneficiaries: Yes

Accessible By: Phone / Walk-Ins

Provider:

Supervisory District: 3

Age Group Served: All Ages

Languages: English, Spanish,

Cultures:

Programs/Services:

ADA Facility: Yes

Website: <http://www.americanhealthservices.org/>

Email: anthony.sykes@americanhealthservices.org

List of Practitioners

Not Available

Service Area 2

**GR1396783 ASANA INTEGRATED MEDICAL GROUP
26135 MUREAU ROAD STE 101
CALABASAS, CA 91302-3125**

Phone: 9162151757

Hours of Operation: Call for Hours

Accepting Beneficiaries: No

Accessible By:

Provider: FFS Outpat

Supervisory District: 3

Age Group Served: All Ages

Languages: English,

Cultures:

Programs/Services:

ADA Facility: No

Website:

Email:

List of Practitioners

Not Available

Service Area 2

**00A429611 BASTA FAWZY
18546 ROSCOE BLVD
NORTHRIDGE, CA 91324**

Phone: (818) 368-8929

Hours of Operation: 9-5

Accepting Beneficiaries: Yes

Accessible By: By Referral Only

Provider: FFS Outpat

Supervisory District: 3

Age Group Served: All Ages

Languages: English,

Cultures:

Programs/Services:

ADA Facility: No

Website: N/A

Email:

List of Practitioners

Not Available

Service Area 2

MF4422900 BERG RICHARD
4853 TILDEN AVE
SHERMAN OAKS, CA 91423-1717

Phone: 818-645-8106

Hours of Operation: Call for Hours

Accepting Beneficiaries: No

Accessible By:

Provider: FFS Outpat

Supervisory District: 3

Age Group Served: All Ages

Languages: English,

Cultures:

Programs/Services:

ADA Facility: No

Website:

Email:

List of Practitioners

Not Available

Service Area 2

MF4584900 BURGINA LYUBOV
16944 VENTURA BLVD
ENCINO, CA 91316-4144

Phone: 323-606-3200

Hours of Operation: M-F from 9am to 6pm

Accepting Beneficiaries: No

Accessible By:

Provider: FFS Outpat

Supervisorial District: 3

Age Group Served: All Ages

Languages: English,

Cultures:

Programs/Services:

ADA Facility: No

Website: www.healthgrades.com

Email:

List of Practitioners

Not Available

Service Area 2

00C411890 CALICA ESTELITA
1505 WILSON TERRACE SUITE 230
GLENDALE, CA 91206-4071

Phone: 818-546-1515

Hours of Operation: Call for Hours

Accepting Beneficiaries: No

Accessible By:

Provider: FFS Outpat

Supervisory District: 1

Age Group Served: All Ages

Languages: English,

Cultures:

Programs/Services:

ADA Facility: No

Website:

Email:

List of Practitioners

Not Available

Service Area 2

**00A297840 CHARUVASTRA V. CHARLES
14850 ROSCOE BLVD
PANORAMA CITY, CA 91402**

Phone: 562-904-8905

Hours of Operation: Call for Hours

Accepting Beneficiaries: No

Accessible By:

Provider: FFS Outpat

Supervisory District: 3

Age Group Served: All Ages

Languages: English,

Cultures:

Programs/Services:

ADA Facility: No

Website:

Email:

List of Practitioners

Not Available

Service Area 2

MF4675800 FARMANI MARYAM
5536 TAMPA AVE
TARZANA, CA 91356-9998

Phone: 818-609-9989

Hours of Operation: Call for Hours

Accepting Beneficiaries: No

Accessible By:

Provider: FFS Outpat

Supervisory District: 3

Age Group Served: All Ages

Languages: English,

Cultures:

Programs/Services:

ADA Facility: No

Website:

Email:

List of Practitioners

Not Available

Service Area 2

**00A431780 FARRAG HASSAN
17075 DEVONSHIRE ST
NORTHRIDGE, CA 91325-1600**

Phone: (818) 368-8929

Hours of Operation: 9-5

Accepting Beneficiaries: No

Accessible By: By Referral Only

Provider: FFS Outpat

Supervisory District: 3

Age Group Served: All Ages

Languages: English,

Cultures:

Programs/Services:

ADA Facility: Yes

Website: N/A

Email:

List of Practitioners

Not Available

Service Area 2

**000G67830 FISCHER MARTIN
4669 ARRIBA DRIVE
TARZANA, CA 91356-4825**

Phone: 8187053635

Hours of Operation: Call for Hours

Accepting Beneficiaries: No

Accessible By:

Provider: FFS Outpat

Supervisory District: 3

Age Group Served: All Ages

Languages: English,

Cultures:

Programs/Services:

ADA Facility: No

Website:

Email:

List of Practitioners

Not Available

Service Area 2

1639249170 GARMA FELIZA N
17075 Devonshire St
Northridge, CA 914160040

Phone:

Hours of Operation: 9-5

Accepting Beneficiaries: No

Accessible By:

Provider: FFS Outpat

Supervisory District: 2

Age Group Served: All Ages

Languages: English, Tagalog,

Cultures:

Programs/Services:

ADA Facility: Yes

Website: FGarmaMD@gmail.com

Email:

List of Practitioners

Not Available

Service Area 2

PSY682100 HIRSCH JEFFREY
16901 NAPA STREET
NORTH HILLS, CA 91343-9998

Phone: 818-915-4346

Hours of Operation: Call for Hours

Accepting Beneficiaries: No

Accessible By:

Provider: FFS Outpat

Supervisory District: 3

Age Group Served: All Ages

Languages: English,

Cultures:

Programs/Services:

ADA Facility: No

Website: N/A

Email:

List of Practitioners

Not Available

Service Area 2

00A380360 JUDITH VUKOV MD INC
121 W. LEXINGTON DRIVE SUITE 210
GLENDALE, CA 91203-1180

Phone: 818-956-3207

Hours of Operation: Call for Hours

Accepting Beneficiaries: No

Accessible By:

Provider: FFS Outpat

Supervisory District: 5

Age Group Served: All Ages

Languages: English,

Cultures:

Programs/Services:

ADA Facility: No

Website:

Email:

List of Practitioners

Not Available

Service Area 2

00A988680 KARPUS EUGENE
20215 VENTURA BLVD STE A
WOODLAND HILLS, CA 91364-2563

Phone: 818-883-9000

Hours of Operation: Call for Hours

Accepting Beneficiaries: No

Accessible By:

Provider: FFS Outpat

Supervisory District: 3

Age Group Served: All Ages

Languages: English,

Cultures:

Programs/Services:

ADA Facility: No

Website:

Email:

List of Practitioners

Not Available

Service Area 2

MF5075500 KEYVAN BEHNAM
16542 VENTURA BLVD
ENCINO, CA 91436-1234

Phone: 8184482753

Hours of Operation: Call for Hours

Accepting Beneficiaries: No

Accessible By:

Provider: FFS Outpat

Supervisory District: 3

Age Group Served: All Ages

Languages: English,

Cultures:

Programs/Services:

ADA Facility: No

Website:

Email:

List of Practitioners

Not Available

Service Area 2

MF4636700 KHEIRI MAHNAZ
5060 CHIMINEAS AVE
TARZANA, CA 91356-9998

Phone: 818-926-0426

Hours of Operation: 8:00 am-8:00 pm Mon-Sat

Accepting Beneficiaries: Yes

Accessible By:

Provider: FFS Outpat

Supervisory District: 3

Age Group Served: All Ages

Languages: English, Farsi,

Cultures: Trauma,

Programs/Services:

ADA Facility: No

Website: N/A

Email:

List of Practitioners

Not Available

Service Area 2

MF5441100 Ladan H. Safvati
18345 Ventura Blvd
Tarzana, CA 91356

Phone:

Hours of Operation: 9:00 am to 6:00 pm

Accepting Beneficiaries: No

Accessible By:

Provider: FFS Outpat

Supervisory District: 3

Age Group Served: All Ages

Languages: English, Farsi,

Cultures:

Programs/Services:

ADA Facility: Yes

Website:

Email:

List of Practitioners

Not Available

Service Area 2

MF4065200 LARA RAUL
7220 OWENSMOUTH AVE
CANOGA PARK, CA 91303-1592

Phone: 818-631-5286

Hours of Operation: Call for Hours

Accepting Beneficiaries: No

Accessible By:

Provider: FFS Outpat

Supervisory District: 3

Age Group Served: All Ages

Languages: English,

Cultures:

Programs/Services:

ADA Facility: No

Website:

Email:

List of Practitioners

Not Available

Service Area 2

EPS003470 LAZAR MCMAHON AYLENE
5341 ALHAMA DR
WOODLAND HILLS, CA 91364-2127

Phone: 8183467079

Hours of Operation: Call for Hours

Accepting Beneficiaries: No

Accessible By:

Provider: FFS Outpat

Supervisory District: 3

Age Group Served: All Ages

Languages: English,

Cultures:

Programs/Services:

ADA Facility: No

Website: none

Email:

List of Practitioners

Not Available

Service Area 2

00A549510 LEV GERTSIK, MD INC
1487 E. CHEVY CHASE BLVD
GLENDALE, CA 91206-4008

Phone: 310-726-3983

Hours of Operation: Call for Hours

Accepting Beneficiaries: No

Accessible By:

Provider: FFS Outpat

Supervisory District: 1

Age Group Served: All Ages

Languages: English,

Cultures:

Programs/Services:

ADA Facility: No

Website:

Email:

List of Practitioners

Not Available

Service Area 2

**PSY150250 LITVIN CHESTER
6229 MORSE AVE
N HOLLYWOOD, CA 91606-9998**

Phone: 818-769-6921

Hours of Operation: Call for Hours

Accepting Beneficiaries: No

Accessible By:

Provider: FFS Outpat

Supervisory District: 3

Age Group Served: All Ages

Languages: English,

Cultures:

Programs/Services:

ADA Facility: No

Website:

Email:

List of Practitioners

Not Available

Service Area 2

8186863000 x 4196 LVT
11600 Eldridge Ave
Lake View Terrace , Ca 91342

Phone:

Hours of Operation: 9am-6pm

Accepting Beneficiaries: No

Accessible By:

Provider:

Supervisory District: 3

Age Group Served: All Ages

Languages: American Sign Language, Arabic, Armenian, Cambodian, Cantonese, English, Farsi, Hmong, Korean, Mandarin, Other Chinese, Russian, Spanish, Tagalog, Vietnamese

Cultures:

Programs/Services:

ADA Facility: Yes

Website: www.phoenixhouse.org

Email:

List of Practitioners

Not Available

Service Area 2

**00A648280 MEHBOOB MAKHANI MD PROF CORP
14400 ROSCOE BLVE SUITE D
PANORAMA CITY, CA 91402**

Phone: 818-894-1280

Hours of Operation: Call for Hours

Accepting Beneficiaries: No

Accessible By:

Provider: FFS Outpat

Supervisory District: 3

Age Group Served: All Ages

Languages: English,

Cultures:

Programs/Services:

ADA Facility: No

Website:

Email:

List of Practitioners

Not Available

Service Area 2

PSY215410 NOORAVI SHIRIN
18345 VENTURA BLVD
TARZANA, CA 91346-4242

Phone: (818)344-6818

Hours of Operation: MONDAY TO FRIDAY , 9 TO 5

Accepting Beneficiaries: No

Accessible By: By Referral Only

Provider: FFS Outpat

Supervisory District: 3

Age Group Served: All Ages

Languages: English, Farsi,

Cultures:

Programs/Services:

ADA Facility: No

Website: N/A

Email: embm2000@aol.com

List of Practitioners

Not Available

Service Area 2

**00A197500 PETRUS EARL
21000 PLUMMER ST
CHATSWORTH, CA 91311-4903**

Phone: 818-882-6400

Hours of Operation: Call for Hours

Accepting Beneficiaries: No

Accessible By:

Provider: FFS Outpat

Supervisory District: 3

Age Group Served: All Ages

Languages: English,

Cultures:

Programs/Services:

ADA Facility: No

Website:

Email:

List of Practitioners

Not Available

Service Area 2

00G403580 POWERS MARK
1530 E CHEVY CHASE DR STE 103
GLENDAL, CA 91206-4139

Phone: 818-243-0514

Hours of Operation: Call for Hours

Accepting Beneficiaries: No

Accessible By:

Provider: FFS Outpat

Supervisory District: 1

Age Group Served: All Ages

Languages: English,

Cultures:

Programs/Services:

ADA Facility: No

Website:

Email:

List of Practitioners

Not Available

Service Area 2

**MF5233400 RINKENBERGER, AMALIA
15720 VENTURA BLVD
ENCINO, CA 91436-2914**

Phone: 8182354261

Hours of Operation: Call for Hours

Accepting Beneficiaries: No

Accessible By:

Provider: FFS Outpat

Supervisory District: 3

Age Group Served: All Ages

Languages: English,

Cultures:

Programs/Services:

ADA Facility: No

Website:

Email:

List of Practitioners

Not Available

Service Area 2

MF5114400 SAFVATI LADAN
5536 TAMPA AVE
TARZANA, CA 91356-3027

Phone: 310-383-5654

Hours of Operation: MON - FRI

Accepting Beneficiaries: No

Accessible By:

Provider: FFS Outpat

Supervisory District: 3

Age Group Served: All Ages

Languages: English,

Cultures:

Programs/Services:

ADA Facility: No

Website:

Email:

List of Practitioners

Not Available

Service Area 2

**00G243950 SCHNURER ANTHONY
11900 VENTURA BLVD
STUDIO CITY, CA 91604-2606**

Phone: (818) 263-4490

Hours of Operation: 9-5

Accepting Beneficiaries: No

Accessible By: By Referral Only

Provider: FFS Outpat

Supervisory District: 3

Age Group Served: All Ages

Languages: English,

Cultures:

Programs/Services:

ADA Facility: Yes

Website: N/A

Email:

List of Practitioners

Not Available

Service Area 2

00A765030 SHARMA ANIL
14850 ROSCOE AVE
LOS ANGELES, CA 90027-6005

Phone: 213-413-3000

Hours of Operation: MON - FRI, 9 AM - 5 PM

Accepting Beneficiaries: No

Accessible By:

Provider: FFS Outpat

Supervisory District: 3

Age Group Served: All Ages

Languages: English,

Cultures:

Programs/Services:

ADA Facility: No

Website:

Email:

List of Practitioners

Not Available

Service Area 2

00A765030 SHARMA ANIL
14850 ROSCOE AVE
LOS ANGELES, CA 90027-6005

Phone: 213-413-3000

Hours of Operation: MON - FRI, 9 AM - 6 PM

Accepting Beneficiaries: No

Accessible By:

Provider: FFS Outpat

Supervisory District: 3

Age Group Served: All Ages

Languages: English,

Cultures:

Programs/Services:

ADA Facility: No

Website:

Email:

List of Practitioners

Not Available

Service Area 2

**MF3690500 SHEREE JONES-PISTOL A MARRIAGE&FAMILY THERAPY CO
14622 VICTORY BLVD
VAN NUYS, CA 91411-1669**

Phone: 8187055852

Hours of Operation: Call for Hours

Accepting Beneficiaries: No

Accessible By:

Provider: FFS Outpat

Supervisory District: 3

Age Group Served: All Ages

Languages: English,

Cultures:

Programs/Services:

ADA Facility: No

Website:

Email:

List of Practitioners

Not Available

Service Area 2

**00A440720 SHIRAZI ABUL
17337 VENTURA BLVD
ENCINO, CA 91316-3991**

Phone: 818-372-0656

Hours of Operation: Call for Hours

Accepting Beneficiaries: No

Accessible By:

Provider: FFS Outpat

Supervisory District: 3

Age Group Served: All Ages

Languages: English,

Cultures:

Programs/Services:

ADA Facility: No

Website:

Email:

List of Practitioners

Not Available

Service Area 2

MF4048000 SWIM SUSAN
11900 BIG TUJUNGA CANYON ROAD
TUJUNGA, CA 91042-1129

Phone: 626-487-9305

Hours of Operation: 10-5 M-F

Accepting Beneficiaries: Yes

Accessible By: Phone Only

Provider: FFS Outpat

Supervisory District: 5

Age Group Served: All Ages

Languages: English, Spanish,

Cultures: Co-occurring Substance Use Disorders, Disabilities Special Needs,
Gender Identity, Race Ethnicity, Sexual Orientation, Spirituality,
Trauma, Under Represented Populations, Veterans,

Programs/Services:

ADA Facility: No

Website: www.nowiseeaperson.com

Email: swiminc@aol.com

List of Practitioners

Not Available

Service Area 2

GR1720538 TRANSITIONING LIVES LLC
15021 VENTURA BLVD
SHERMAN OAKS, CA 91403-2442

Phone: 8185700337

Hours of Operation: Call for Hours

Accepting Beneficiaries: No

Accessible By:

Provider: FFS Outpat

Supervisory District: 3

Age Group Served: All Ages

Languages: English,

Cultures:

Programs/Services:

ADA Facility: No

Website:

Email:

List of Practitioners

Not Available

Service Area 2

PSY190800 WAGNER LILIET
13400 SHERMAN WAY
NORTH HOLLYWOOD, CA 91605-4415

Phone: 661-644-5454

Hours of Operation: n/a - facility based provider - not out-patient

Accepting Beneficiaries: Yes

Accessible By: Phone Only

Provider: FFS Outpat

Supervisory District: 3

Age Group Served: All Ages

Languages: English,

Cultures:

Programs/Services:

ADA Facility: Yes

Website: N/A

Email:

List of Practitioners

Not Available

Service Area 2

24 HOUR/RESIDENTIAL

**1953 1953 LOS ANGELES COUNTY OLIVE VIEW-UCLA MEDICAL CENTER
14445 OLIVE VIEW DRIVE
SYLMAR, CA 91342-1495**

Phone: 818-364-3432

Hours of Operation: Mon - Thu/ 8 AM - 7 PM, Fri/ 8 AM – 7 PM, Sat/ 9 AM – 5:30 PM,
Sun/ Closed

Accepting Beneficiaries: No

Accessible By: 24 HOURS

Provider: DHS

Supervisorial District: 3

Age Group Served: All Ages

Languages: English,

Cultures:

Programs/Services: 24 HOUR ACUTE INPATIENT

ADA Facility: No

Website: <http://dhs.lacounty.gov/wps/portal/dhs/oliveview>

Email:

List of Practitioners

Not Available

Service Area 2

24 HOUR/RESIDENTIAL

6758 6758 HILLVIEW MHC ADULT RESIDENTIAL
12408 VAN NUYS BLVD BLDG C
PACOIMA, CA 91331-1313

Phone: 818-896-1161, extension 200

Hours of Operation: 24 HOURS

Accepting Beneficiaries: Yes

Accessible By: By Referral Only

Provider: NGA

Supervisory District: 3

Age Group Served: All Ages

Languages: English, Spanish, Tagalog,

Cultures: Co-occurring Substance Use Disorders, Forensic Legal, Under Represented Populations,

Programs/Services: MENTAL HEALTH SERVICES* (MHS), RESIDENTIAL, MEDICATION SUPPORT, CRISIS INTERVENTION, TARGETED CASE MANAGEMENT

ADA Facility: Yes

Website: www.hillviewmhc.org

Email: info@hillviewmhc.org

List of Practitioners

Not Available

Service Area 2

24 HOUR/RESIDENTIAL

7075 7075 HACIENDA RETIRADA BRIDGES INC
8514 TOPANGA CANYON BLVD
CANOGA PARK, CA 91304-2348

Phone: 818-999-0143

Hours of Operation: 24 HOURS

Accepting Beneficiaries: Yes

Accessible By: Phone Only

Provider: NGA

Supervisorial District: 3

Age Group Served: All Ages

Languages: English, Spanish,

Cultures: Co-occurring Substance Use Disorders, Homeless Housing, Race
Ethnicity, Under Represented Populations,

Programs/Services: MENTAL HEALTH SERVICES* (MHS), TARGETED CASE
MANAGEMENT (TCM), TRANSITIONAL RESIDENTIAL

ADA Facility: Yes

Website: www.bridgesrehab.org

Email: info@bridgesrehab.org

List of Practitioners

Not Available

Service Area 2

24 HOUR/RESIDENTIAL

**7490 7490 THE HELP GROUP PROJECT SIX
15339 SATICOY STREET
VAN NUYS, CA 91406-3345**

Phone: 818-267-2624

Hours of Operation: 24 HOURS

Accepting Beneficiaries: Yes

Accessible By: By Referral Only

Provider: NGA

Supervisorial District: 3

Age Group Served: All Ages

Languages: English, Spanish,

Cultures:

Programs/Services: MEDICATION SUPPORT, CRISIS INTERVENTION, TARGETED CASE MANAGEMENT, MENTAL HEALTH SERVICES* (MHS), SPECIALIZED FOSTER CARE

ADA Facility: Yes

Website: www.thehelpgroup.org

Email: crivera@thehelpgroup.org

List of Practitioners

Not Available

Service Area 2

24 HOUR/RESIDENTIAL

7772 7772 BRIDGES
6267 VARIEL AVENUE SUITE B
WOODLAND HILLS, CA 91367-2512

Phone: 909-623-6651

Hours of Operation: MON-FRID 8:30AM-5:30; SAT-VARIES; EVENINGS- AS NEE

Accepting Beneficiaries: Yes

Accessible By: Phone / Walk-Ins

Provider: NGA

Supervisorial District: 3

Age Group Served: All Ages

Languages: English, Spanish,

Cultures: Co-occurring Substance Use Disorders, Homeless Housing, Race Ethnicity, Under Represented Populations,

Programs/Services: MENTAL HEALTH SERVICES* (MHS), PREVENTION & EARLY INTERVENTION (PEI), RESIDENTIAL, TARGETED CASE MANAGEMENT (TCM), FIELD CAPABLE CLINICAL SERVICES (FCCS), CLIENT SUPPORTIVE SERVICES

ADA Facility: Yes

Website: www.bridgesrehab.org

Email: info@bridgesrehab.org

List of Practitioners

Not Available

Service Area 2

CRISIS SERVICES

**7477 7477 EOB CRISIS HOMELESS SAN FERNANDO
10605 BALBOA BLVD
GRANADA HILLS, CA 91344-6367**

Phone: 818-832-2410

Hours of Operation: MON - FRI 7:00 AM - 5:00 PM

Accepting Beneficiaries: Yes

Accessible By: FIELD RESPONSE ONLY

Provider: DO

Supervisorial District: 3

Age Group Served: All Ages

Languages: English,

Cultures:

Programs/Services: COMMUNITY OUTREACH, CRISIS INTERVENTION, CRISIS HOMELESS, MENTAL HEALTH SERVICES* (MHS), PROVIDER LINKAGE AND REFERRAL, PSYCHIATRIC MOBILE RESPONSE

ADA Facility: No

Website: www.dmh.lacounty.gov

Email:

List of Practitioners

Not Available

Service Area 2

CRISIS SERVICES

7877 7877 BURBANK MENTAL HEALTH EVAL TEAM
200 NORTH THIRD STREET 3RD FLOOR
BURBANK, CA 91502-1201

Phone: 818-238-3391

Hours of Operation: MON - FRI 8:00 AM - 5:00 PM

Accepting Beneficiaries: Yes

Accessible By: BY REFERRAL ONLY

Provider: DO

Supervisorial District: 5

Age Group Served: All Ages

Languages: English,

Cultures:

Programs/Services: CRISIS INTERVENTION, TARGETED CASE
MANAGEMENT, MENTAL HEALTH SERVICES* (MHS)

ADA Facility: Yes

Website: www.dmh.lacounty.gov

Email:

List of Practitioners

Not Available

Service Area 2

CRISIS SERVICES

**7922 7922 SA2 SB82 MOBILE TRIAGE TEAM
6800 OWENSMOUTH AVE
CANOGA PARK, CA 91303-4255**

Phone: 818-610-6750

Hours of Operation: M-F 8:00AM-5:00PM

Accepting Beneficiaries: No

Accessible By: FIELD BASED SERVICES, BY REFERRAL ONLY

Provider: DO

Supervisorial District: 3

Age Group Served: All Ages

Languages: English,

Cultures:

Programs/Services: COMMUNITY OUTREACH SERVICES, TARGETED CASE MANAGEMENT (TCM), CRISIS INTERVENTION, MENTAL HEALTH SERVICES

ADA Facility: No

Website: www.dmh.lacounty.gov

Email:

List of Practitioners

Not Available

Service Area 2

JUVENILE JUSTICE

**6821 6821 BARRY J NIDORF JUV HALL MH UNT
16350 FILBERT ST
SYLMAR, CA 91342-9998**

Phone: 818-364-6876

Hours of Operation: MON - FRI 8:00 AM - 5:00 PM

Accepting Beneficiaries: No

Accessible By: BY REFERRAL ONLY

Provider: DO

Supervisorial District: 3

Age Group Served: All Ages

Languages: English,

Cultures:

Programs/Services: COMMUNITY OUTREACH, CRISIS INTERVENTION, JUVENILE JUSTICE, MEDICATION SUPPORT, MENTAL HEALTH SERVICES* (MHS), PSYCHOLOGICAL TESTING

ADA Facility: No

Website: www.dmh.lacounty.gov

Email:

List of Practitioners

Not Available

Service Area 2

JUVENILE JUSTICE

**7479 7479P CHILD AND FAMILY CENTER
21545 CENTRE POINTE PARKWAY
SANTA CLARITA, CA 91350-2947**

Phone: 661-259-9439

Hours of Operation: MON - FRI 8:00 AM - 8:00 PM

Accepting Beneficiaries: No

Accessible By: BY REFERRAL ONLY

Provider: NGA

Supervisory District: 5

Age Group Served: 0-20

Languages: English, Spanish,

Cultures:

Programs/Services: CRISIS INTERVENTION, FIELD CAPABLE CLINICAL SERVICES (FCCS), FULL SERVICE PARTNERSHIP (FSP), MEDICATION SUPPORT, MENTAL HEALTH SERVICES* (MHS), PREVENTION & EARLY INTERVENTION (PEI), SPECIALIZED FOSTER CARE, SUBSTANCE ABUSE TREATMENT, WRAPAROUND SERVICES

ADA Facility: Yes

Website: www.childfamilycenter.org

Email:

List of Practitioners

Not Available

Service Area 2

JUVENILE JUSTICE

**7622 7622A SFVCMHC JUV JUST PROGRAMS
6400 LAUREL CANYON BLVD
NORTH HOLLYWOOD, CA 91606-1571**

Phone: 818-901-4879

Hours of Operation: M-R 9-7; F 8:30-5:30

Accepting Beneficiaries: Yes

Accessible By: BY REFERRAL ONLY

Provider: NGA

Supervisorial District: 3

Age Group Served: 0-20

Languages: English, Spanish,

Cultures: Co-occurring Substance Use Disorders, Forensic Legal,

Programs/Services: CRISIS INTERVENTION, MENTAL HEALTH SERVICES* (MHS),
TARGETED CASE MANAGEMENT (TCM)

ADA Facility: Yes

Website: <https://www.movinglivesforward.org/>

Email:

List of Practitioners

Not Available

Service Area 2

JUVENILE JUSTICE

7622 7622Y Sfvcmhc Juv Justice Bjn Sat
6400 LAUREL CANYON BLVD
NORTH HOLLYWOOD, CA 91606-1571

Phone: 818-901-4879

Hours of Operation: MON - FRI 9-6

Accepting Beneficiaries: Yes

Accessible By: BY REFERRAL ONLY

Provider: NGA

Supervisorial District: 3

Age Group Served: 0-20

Languages: English,

Cultures: Co-occurring Substance Use Disorders, Forensic Legal,

Programs/Services: TARGETED CASE MANAGEMENT, CRISIS INTERVENTION, MENTAL HEALTH SERVICES* (MHS)

ADA Facility: Yes

Website: <https://www.movinglivesforward.org/>

Email:

List of Practitioners

Not Available

Service Area 2

JUVENILE JUSTICE

**7864 7864 PENNY LANE CENTERS
16350 FILBERT STREET
SYLMAR, CA 91342-1002**

Phone: 818-892-3423

Hours of Operation: MON - FRI 8:00 AM - 5:00 PM

Accepting Beneficiaries: No

Accessible By: BY REFERRAL ONLY

Provider: NGA

Supervisorial District: 3

Age Group Served: 0-20

Languages: English,

Cultures:

Programs/Services: MENTAL HEALTH SERVICES* (MHS), TARGETED CASE MANAGEMENT, CRISIS INTERVENTION

ADA Facility: Yes

Website: www.pennylane.org

Email: MFerrante@pennylane.org

List of Practitioners

Not Available

Service Area 2

OUTPATIENT

**1905 1905 SANTA CLARITA VALLEY MH CENTER
23501 CINEMA DR 200 AND 210
VALENCIA, CA 91355-5428**

Phone: 661-288-4800

Hours of Operation: MON, WED, THURS, FRI 8:00 AM - 6:30 PM; TUES 8:00

Accepting Beneficiaries: Yes

Accessible By: MON, WED, THURS, FRI 8-5; TUES 8-8

Provider: DO

Supervisory District: 5

Age Group Served: All Ages

Languages: Arabic, Armenian, English, Farsi, Russian, Spanish,

Cultures:

Programs/Services: COMMUNITY OUTREACH, MEDICATION SUPPORT, MENTAL HEALTH SERVICES* (MHS), NEUROPSYCHOLOGICAL ASSESMENT, PSYCHOLOGICAL ASSESMENT, TARGETED CASE MANAGEMENT (TCM)

ADA Facility: Yes

Website: www.dmh.lacounty.gov

Email:

List of Practitioners

Not Available

Service Area 2

OUTPATIENT

190A 190A PENNY LANE CENTERS-SATELLITE VII
9630 WILBUR AVENUE
NORTHRIDGE, CA 91324-1853

Phone: 818-892-3423

Hours of Operation: MON - FRI 8:00 AM - 5:00 PM

Accepting Beneficiaries: No

Accessible By: CONTACT PROVIDER

Provider: NGA

Supervisorial District: 3

Age Group Served: 0-20

Languages: English, Farsi,

Cultures:

Programs/Services: MEDICATION SUPPPORT, CRISIS INTERVENTION, MENTAL HEALTH SERVICES* (MHS), TARGETED CASE MANAGEMENT,

ADA Facility: Yes

Website: www.pennylane.org

Email: MFerrante@pennylane.org

List of Practitioners

Not Available

Service Area 2

OUTPATIENT

190B 190B PENNY LANE CENTERS - SATELLITE IV
8616 VALJEAN AVENUE
NORTH HILLS, CA 91343-5715

Phone: 818-892-3423

Hours of Operation: MON - FRI 8:00 AM - 5:00 PM

Accepting Beneficiaries: No

Accessible By: CONTACT PROVIDER

Provider: NGA

Supervisory District: 3

Age Group Served: 0-20

Languages: English, Farsi, Russian,

Cultures:

Programs/Services: MEDICATION SUPPORT, CRISIS INTERVENTION, MENTAL HEALTH SERVICES* (MHS), TARGETED CASE MANAGEMENT, INTENSIVE CASE COORDINATION, COLLATERAL, OUTPATIENT, INTENSIVE HOME BASED SERVICES

ADA Facility: Yes

Website: www.pennylane.org

Email: MFerrante@pennylane.org

List of Practitioners

Not Available

Service Area 2

OUTPATIENT

190D 190D PENNY LANE CENTERS - SATELLITE IX
1610 N. VALLEY STREET
BURBANK, CA 91505-1714

Phone: 818-892-3423

Hours of Operation: MON - FRI 8:00 AM - 5:00 PM

Accepting Beneficiaries: No

Accessible By: CONTACT PROVIDER

Provider: NGA

Supervisory District: 3

Age Group Served: 0-20

Languages: English, Farsi,

Cultures:

Programs/Services: MEDICATION SUPPORT, CRISIS INTERVENTION, MENTAL HEALTH SERVICES* (MHS), TARGETED CASE MANAGEMENT, INTENSIVE CARE COORDINATION, COLLATERAL, INTENSIVE HOME BASED SERVICE

ADA Facility: Yes

Website: www.pennylane.org

Email: MFerrante@pennylane.org

List of Practitioners

Not Available

Service Area 2

OUTPATIENT

**190E 190E PENNY LANE CENTERS-SATELLITE X
6329 CLYBOURN AVENUE
NORTH HOLLYWOOD, CA 91606-3915**

Phone: 818-892-3423

Hours of Operation: MON - FRI 8:00 AM - 5:00 PM

Accepting Beneficiaries: No

Accessible By: CONTACT PROVIDER

Provider: NGA

Supervisory District: 3

Age Group Served: 0-20

Languages: English, Farsi,

Cultures:

Programs/Services: MEDICATION SUPPORT, CRISIS INTERVENTION, MENTAL HEALTH SERVICES* (MHS), TARGETED CASE MANAGEMENT, INTENSIVE CARE COORDINATION, COLLATERAL, INTENSIVE HOME BASED SERVICE

ADA Facility: Yes

Website: www.pennylane.org

Email: MFerrante@pennylane.org

List of Practitioners

Not Available

Service Area 2

OUTPATIENT

**190F 190F PENNY LANE CENTERS-SATELLITE III
13804 OSBORNE ST
ARLETA, CA 91331-6035**

Phone: 818-892-3423

Hours of Operation: MON - FRI 8:00 AM - 5:00 PM

Accepting Beneficiaries: No

Accessible By: CONTACT PROVIDER

Provider: NGA

Supervisory District: 3

Age Group Served: 0-20

Languages: English, Farsi,

Cultures:

Programs/Services: MEDICATION SUPPORT, CRISIS INTERVENTION, MENTAL HEALTH SERVICES* (MHS), TARGETED CASE MANAGEMENT, INTENSIVE CARE COORDINATION, COLLATERAL, INTENSIVE HOME BASED SERVICE

ADA Facility: Yes

Website: www.pennylane.org

Email: MFerrante@pennylane.org

List of Practitioners

Not Available

Service Area 2

OUTPATIENT

190G 190G PENNY LANE CENTERS-SATELLITE VI
11641 BALBOA BLVD
GRANADA HILLS, CA 91344-2710

Phone: 818-892-3423

Hours of Operation: MON - FRI 8:00 AM - 5:00 PM

Accepting Beneficiaries: No

Accessible By: CONTACT PROVIDER

Provider: NGA

Supervisory District: 3

Age Group Served: 0-20

Languages: English, Farsi,

Cultures:

Programs/Services: MEDICATION SUPPORT, CRISIS INTERVENTION, MENTAL HEALTH SERVICES* (MHS), TARGETED CASE MANAGEMENT, INTENSIVE CARE COORDINATION, COLLATERAL, INTENSIVE HOME BASED SERVICE

ADA Facility: Yes

Website: www.pennylane.org

Email: MFerrante@pennylane.org

List of Practitioners

Not Available

Service Area 2

OUTPATIENT

190H 190H PENNY LANE CENTERS - SATELLITE II
16656 NORDHOFF STREET
NORTH HILLS, CA 91343-3613

Phone: 818-892-3423

Hours of Operation: MON - FRI 8:00 AM - 5:00 PM

Accepting Beneficiaries: No

Accessible By: CONTACT PROVIDER

Provider: NGA

Supervisory District: 3

Age Group Served: 0-20

Languages: English, Farsi,

Cultures:

Programs/Services: MEDICATION SUPPORT, CRISIS INTERVENTION, MENTAL HEALTH SERVICES* (MHS), TARGETED CASE MANAGEMENT, INTENSIVE CASE COORDINATION, COLLATERAL, OUTPATIENT, INTENSIVE HOME BASED SERVICES

ADA Facility: Yes

Website: www.pennylane.org

Email: MFerrante@pennylane.org

List of Practitioners

Not Available

Service Area 2

OUTPATIENT

**1918 1918 THE HELP GROUP CHILD AND FAMILY CENTER
13164 BURBANK BLVD
SHERMAN OAKS, CA 91401-6037**

Phone: 818-779-5201

Hours of Operation: MON - FRI 8:00 AM - 5:00 PM

Accepting Beneficiaries: Yes

Accessible By: By Referral Only

Provider: NGA

Supervisorial District: 3

Age Group Served: All Ages

Languages: English, Farsi, Spanish, Tagalog,

Cultures:

Programs/Services: MENTAL HEALTH SERVICES* (MHS), MEDICATION SUPPORT,
TARGETED CASE MANAGEMENT,

ADA Facility: Yes

Website: www.thehelpgroup.org

Email: crivera@thehelpgroup.org

List of Practitioners

Not Available

Service Area 2

OUTPATIENT

**1936 1936 OPTMIST MISSION HILLS
14820 WOLFSKILL STREET
MISSION HILLS, CA 91345-1843**

Phone: 323-443-3175

Hours of Operation: MON - FRI 8:00 AM - 5:00 PM

Accepting Beneficiaries: Yes

Accessible By: BY REFERRAL ONLY

Provider: NGA

Supervisory District: 3

Age Group Served: 0-20

Languages: English, Spanish,

Cultures: Co-occurring Substance Use Disorders, Disabilities Special Needs, Gender Identity, Race Ethnicity, Trauma, Under Represented Populations,

Programs/Services: MENTAL HEALTH SERVICES* (MHS), CRISIS INTERVENTION, TARGETED CASE MANAGEMENT, MEDICATION SUPPORT

ADA Facility: Yes

Website: www.oyhfs.org

Email:

List of Practitioners

Not Available

Service Area 2

OUTPATIENT

**1937 1937 PACIFIC LODGE YOUTH SERVICES
4900 SERRANIA AVENUE
WOODLAND HILLS, CA 91364-3301**

Phone: 323-443-3175

Hours of Operation: MON - FRI 8:00 AM - 5:00 PM

Accepting Beneficiaries: Yes

Accessible By: CONTACT PROVIDER

Provider: NGA

Supervisory District: 3

Age Group Served: All Ages

Languages: English, Spanish,

Cultures:

Programs/Services: CRISIS INTERVENTION, MEDICATION SUPPORT, MENTAL HEALTH SERVICES* (MHS), PREVENTION & EARLY INTERVENTION (PEI), TARGETED CASE MANAGEMENT (TCM), THERAPEUTIC BEHAVIORAL SERVICES (TBS)

ADA Facility: Yes

Website: www.oyhfs.org

Email:

List of Practitioners

Not Available

Service Area 2

OUTPATIENT

**1941 1941 PACIFIC LODGE CAMPUS
4900 SERRANIA AVENUE
WOODLAND HILLS, CA 91364-3301**

Phone: 323-443-3175

Hours of Operation: MON - FRI 8:00 AM - 5:00 PM

Accepting Beneficiaries: Yes

Accessible By: BY REFERRAL ONLY

Provider: NGA

Supervisorial District: 3

Age Group Served: 0-20

Languages: English, Spanish,

Cultures:

Programs/Services: MENTAL HEALTH SERVICES* (MHS), CRISIS INTERVENTION,
TARGETED CASE MANAGEMENT, MEDICATION SUPPORT

ADA Facility: Yes

Website: www.oyhfs.org

Email:

List of Practitioners

Not Available

Service Area 2

OUTPATIENT

**1948 1948 OPTIMIST VAN NUYS
7130 BURNET AVENUE
VAN NUYS, CA 91405-2963**

Phone: 323-443-3175

Hours of Operation: MON - FRI 8:00 AM - 5:00 PM

Accepting Beneficiaries: Yes

Accessible By: BY REFERRAL ONLY

Provider: NGA

Supervisorial District: 3

Age Group Served: 0-20

Languages: English, Spanish,

Cultures:

Programs/Services: MENTAL HEALTH SERVICES* (MHS), CRISIS INTERVENTION, TARGETED CASE MANAGEMENT, MEDICATION SUPPORT, THERAPEUTIC BEHAVIORL SCIENCES (TBS)

ADA Facility: Yes

Website: www.oyhfs.org

Email:

List of Practitioners

Not Available

Service Area 2

OUTPATIENT

**1949 1949 OPTIMIST SYLMAR JH
16350 FILBER STREET
SYLMAR, CA 91342-1002**

Phone: 323-443-3175

Hours of Operation: MON - FRI 8:00 AM - 5:00 PM

Accepting Beneficiaries: Yes

Accessible By: BY REFERRAL ONLY

Provider: NGA

Supervisorial District: 3

Age Group Served: 0-20

Languages: English, Spanish,

Cultures: Co-occurring Substance Use Disorders, Trauma,

Programs/Services: MENTAL HEALTH SERVICES* (MHS), CRISIS INTERVENTION,
TARGETED CASE MANAGEMENT, MEDICATION SUPPORT

ADA Facility: Yes

Website: www.oyhfs.org

Email:

List of Practitioners

Not Available

Service Area 2

OUTPATIENT

1954 1954 HILLVIEW MH AUXILIARY OUTPT - SITE 2
12502 VAN NUYS BLVD
PACOIMA, CA 91331-6723

Phone: 818-896-1161 extension 200

Hours of Operation: MON - FRI 9:00 AM - 5:30 PM

Accepting Beneficiaries: Yes

Accessible By: By Referral Only

Provider: NGA

Supervisory District: 3

Age Group Served: All Ages

Languages: English, Farsi, Spanish,

Cultures: Co-occurring Substance Use Disorders, Forensic Legal, Under
Represented Populations,

Programs/Services: MENTAL HEALTH SERVICES* (MHS), MEDICATION SUPPORT,
TARGETED CASE MANAGEMENT, COMMUNITY OUTREACH
SERVICES,

ADA Facility: Yes

Website: www.hillviewmhc.org

Email: info@hillviewmhc.org

List of Practitioners

Not Available

Service Area 2

OUTPATIENT

**1975 1975 CHILD FAM GUIDANCE CTR NORTHRIDGE
9650 ZELZAH AVE
NORTHRIDGE, CA 91325-2003**

Phone: 818-993-9311

Hours of Operation: MON - THURS 8:30 AM - 7:00 PM; FRI 8:30 AM - 5:00

Accepting Beneficiaries: Yes

Accessible By: CONTACT PROVIDER

Provider: NGA

Supervisory District: 3

Age Group Served: All Ages

Languages: Armenian, English, Spanish,

Cultures:

Programs/Services: COMMUNITY OUTREACH SERVICES, CRISIS INTERVENTION, MEDICATION SUPPORT, MENTAL HEALTH SERVICES* (MHS), PSYCHOLOGICAL TESTING, SPECIALIZED FOSTER CARE, TARGETED CASE MANAGEMENT (TCM)

ADA Facility: Yes

Website: www.childguidance.org

Email:

List of Practitioners

Not Available

Service Area 2

OUTPATIENT

1992 1992 PENNY LANE CENTERS-SATELLITE V
8806 HASKELL STREET
NORTH HILLS, CA 91343-4910

Phone: 818-892-3423

Hours of Operation: MON - FRI 8:00 AM - 5:00 PM

Accepting Beneficiaries: No

Accessible By: BY REFERRAL ONLY

Provider: NGA

Supervisorial District: 3

Age Group Served: 0-20

Languages: English, Farsi, Russian,

Cultures:

Programs/Services: MENTAL HEALTH SERVICES* (MHS), CRISIS INTERVENTION,
TARGETED CASE MANAGEMENT, MEDICATION SUPPORT

ADA Facility: Yes

Website: www.pennylane.org

Email: MFerrante@pennylane.org

List of Practitioners

Not Available

Service Area 2

OUTPATIENT

1996 1996 PENNY LANE CENTERS - SATELLITE I
9723 BURNET STREET
NORTH HILLS, CA 91343-2312

Phone: 818-892-3423

Hours of Operation: MON - FRI 8:00 AM - 5:00 PM

Accepting Beneficiaries: No

Accessible By: BY REFERRAL ONLY

Provider: NGA

Supervisorial District: 3

Age Group Served: 0-20

Languages: English, Farsi,

Cultures:

Programs/Services: MENTAL HEALTH SERVICES* (MHS), CRISIS INTERVENTION,
TARGETED CASE MANAGEMENT, MEDICATION SUPPORT

ADA Facility: Yes

Website: www.pennylane.org

Email: MFerrante@pennylane.org

List of Practitioners

Not Available

Service Area 2

OUTPATIENT

1998 1998 PENNY LANE CENTERS - SATELLITE VIII
9845 HAYVENHURST AVENUE
NORTHRIDGE, CA 91343-1848

Phone: 818-892-3423

Hours of Operation: MON - FRI 8:00 AM - 5:00 PM

Accepting Beneficiaries: No

Accessible By: BY REFERRAL ONLY

Provider: NGA

Supervisorial District: 3

Age Group Served: 0-20

Languages: English, Farsi,

Cultures:

Programs/Services: MENTAL HEALTH SERVICES* (MHS), CRISIS INTERVENTION,
TARGETED CASE MANAGEMENT, MEDICATION SUPPORT

ADA Facility: Yes

Website: www.pennylane.org

Email: MFerrante@pennylane.org

List of Practitioners

Not Available

Service Area 2

OUTPATIENT

**6840 6840 SAN FERNANDO MENTAL HEALTH CENTER
10605 BALBOA BLVD
GRANADA HILLS, CA 91344-9998**

Phone: 818-832-2400

Hours of Operation: MON - FRI 8:00 AM - 6:30 PM

Accepting Beneficiaries: Yes

Accessible By: MON - FRI 8 AM - 6:30 PM

Provider: DO

Supervisorial District: 3

Age Group Served: All Ages

Languages: American Sign Language, Arabic, Armenian, English, Farsi, Russian, Spanish, Tagalog, Vietnamese

Cultures: Co-occurring Substance Use Disorders, Disabilities Special Needs, Forensic Legal, Gender Identity, Homeless Housing, Race Ethnicity, Sexual Orientation, Spirituality, Trauma, Under Represented Populations, Veterans,

Programs/Services: COMMUNITY OUTREACH SERVICES, CRISIS INTERVENTION, FIELD CAPABLE CLINICAL SERVICES (FCCS), MEDICATION SUPPORT, MENTAL HEALTH SERVICES* (MHS), PSYCHOLOGICAL TESTING, TARGETED CASE MANAGEMENT (TCM), ADULT FULL SERVICE PARTNERSHIP (FSP)

ADA Facility: Yes

Website: www.dmh.lacounty.gov

Email:

List of Practitioners

Not Available

Service Area 2

OUTPATIENT

**6841 6841 WEST VALLEY MH/WELLNESS CENTER
7621 CANOGA AVENUE
CANOGA PARK, CA 91304-4912**

Phone: 818-598-6900

Hours of Operation: MON - FRI 8:00 AM - 5:00 PM

Accepting Beneficiaries: Yes

Accessible By: MON - FRI 8 AM - 5 PM

Provider: DO

Supervisorial District: 3

Age Group Served: All Ages

Languages: Armenian, English, Farsi, Russian, Spanish, Tagalog,

Cultures:

Programs/Services: FIELD CAPABLE CLINICAL SERVICES (FCCS), MENTAL HEALTH SERVICES (MHS)*, MEDICATION SUPPORT, PEER SUPPORT

ADA Facility: Yes

Website: www.dmh.lacounty.gov

Email:

List of Practitioners

Not Available

Service Area 2

OUTPATIENT

6853 6853 SFVCMHC EVYFC
6400 LAUREL CANYON BLVD
NORTH HOLLYWOOD, CA 91606-1571

Phone: 818-901-6376

Hours of Operation: Monday - Thursday 9 a.m. - 7 p.m.; Friday 8:30 a.m. - 5:30 p.m.

Accepting Beneficiaries: Yes

Accessible By: CONTACT PROVIDER

Provider: NGA

Supervisory District: 3

Age Group Served: 0-20

Languages: English, Spanish,

Cultures: Gender Identity, Sexual Orientation, Trauma,

Programs/Services: COMMUNITY OUTREACH SERVICES, CRISIS INTERVENTION, FIELD CABABLE CLINICAL SERVICES (FCCS), MEDICATION SUPPORT, MENTAL HEALTH SERVICES* (MHS), SPECIALIZED FOSTER CARE, TARGETED CASE MANAGEMENT, THERAPEUTIC BEHAVIORAL SERVICES (TBS)

ADA Facility: Yes

Website: <https://www.movinglivesforward.org/>

Email:

List of Practitioners

Not Available

Service Area 2

OUTPATIENT

**6859 6859 DMH AT HARBOR UCLA MEDICAL CTR
1000 W CARSON ST
TORRANCE, CA 90509-9998**

Phone: 310-222-1613

Hours of Operation: MON - FRI 8:00 AM - 5:00 PM

Accepting Beneficiaries: Yes

Accessible By: MON - FRI 8 - 5

Provider: DO

Supervisorial District: 4

Age Group Served: All Ages

Languages: English,

Cultures: Co-occurring Substance Use Disorders,

Programs/Services: COMMUNITY OUTREACH, CRISIS INTERVENTION, FULL SERVICE PARTNERSHIP (FSP), MEDICATION SUPPORT, MENTAL HEALTH SERVICES* (MHS), SPECIALIZE FOSTER CARE, TARGETED CASE MANAGEMENT (TCM)

ADA Facility: No

Website: www.dmh.lacounty.gov

Email:

List of Practitioners

Not Available

Service Area 2

OUTPATIENT

6863 6863 PENNY LANE CENTERS
15305 RAYEN STREET
NORTH HILLS, CA 91343-5117

Phone: 818-892-3423

Hours of Operation: MON - THUR 8:00 AM - 8:00 PM; FRI 8:00 AM - 6:00 P

Accepting Beneficiaries: No

Accessible By: CONTACT PROVIDER

Provider: NGA

Supervisory District: 3

Age Group Served: All Ages

Languages: American Sign Language, Armenian, English, Farsi, Spanish, Tagalog, Vietnamese

Cultures:

Programs/Services: MEDICATION SUPPORT, MENTAL HEALTH SERVICES* (MHS), PSYCHOLOGICAL TESTING, THERAPEUTIC BEHAVIORAL SERVICES (TBS)

ADA Facility: Yes

Website: www.pennylane.org

Email: MFerrante@pennylane.org

List of Practitioners

Not Available

Service Area 2

OUTPATIENT

**7050 7050 EL CENTRO DE AMISTAD, INC.
7038 OWENSMOUTH AVE
CANOGA PARK, CA 91303-3198**

Phone: 818-347-8565

Hours of Operation: MON 8:30 AM - 5:00 PM; THUR 8:30 AM - 7:30 PM

Accepting Beneficiaries: Yes

Accessible By: CONTACT PROVIDER

Provider: NGA

Supervisory District: 3

Age Group Served: All Ages

Languages: English, Spanish,

Cultures:

Programs/Services: COMMUNITY OUTREACH, MEDICATION SUPPORT, MENTAL HEALTH SERVICES* (MHS), SPECIALIZED FOSTER CARE, TARGETED CASE MANAGEMENT (TCM). CASE MANAGEMENT SUPPORT

ADA Facility: Yes

Website: www.elcentrodeamistad.com

Email:

List of Practitioners

Not Available

Service Area 2

OUTPATIENT

7068 7068 HILLVIEW MHC - OUTPATIENT
12450 VAN NUYS BLVD
PACOIMA, CA 91331-1391

Phone: 818-896-1161, extension 200

Hours of Operation: MON - FRI 9:00 AM - 5:30 PM

Accepting Beneficiaries: Yes

Accessible By: Phone / Walk-Ins

Provider: NGA

Supervisory District: 3

Age Group Served: All Ages

Languages: Armenian, English, Farsi, Russian, Spanish, Tagalog,

Cultures: Co-occurring Substance Use Disorders, Forensic Legal, Gender Identity, Homeless Housing, Sexual Orientation, Under Represented Populations,

Programs/Services: CALWORKS, FIELD CAPABLE CLINICAL SERVICES (FCCS), FULL SERVICE PARTNERSHIP (FSP), MEDICATION SUPPORT, MENTAL HEALTH SERVICES* (MHS), PREVENTION & EARLY INTERVENTION (PEI), PSYCHOLOGICAL TESTING, SPECIALIZED FOSTER CARE, TARGETED CASE MANAGEMENT (TCM), WEL

ADA Facility: Yes

Website: www.hillviewmhc.org

Email: info@hillviewmhc.org

List of Practitioners

Not Available

Service Area 2

OUTPATIENT

**7095 7095 THE HELP GROUP CHILD + FAMILY CENTER
13130 BURBANK BLVD
SHERMAN OAKS, CA 91401-6037**

Phone: 818-779-5266

Hours of Operation: MON - FRI 8:30 AM - 6:00 PM

Accepting Beneficiaries: Yes

Accessible By: Phone / Walk-Ins

Provider: NGA

Supervisory District: 3

Age Group Served: 0-20

Languages: English, Spanish,

Cultures:

Programs/Services: COMMUNITY OUTREACH SERVICES, DAY REHABILITATION, DAY TREATMENT, MEDICATION SUPPORT, MENTAL HEALTH SERVICES* (MHS), PSYCHOLOGICAL TESTING, SPECIALIZED FOSTER CARE

ADA Facility: Yes

Website: www.thehelpgroup.org

Email: crivera@thehelpgroup.org

List of Practitioners

Not Available

Service Area 2

OUTPATIENT

**7100 7100 CENTER FOR FAMILY LIVING
14545 SHERMAN CIRCLE
VAN NUYS, CA 91405-3087**

Phone: 818-901-4854

Hours of Operation: MON - FRI 8:30 AM - 5:00 PM

Accepting Beneficiaries: Yes

Accessible By: CONTACT PROVIDER

Provider: NGA

Supervisory District: 3

Age Group Served: All Ages

Languages: English, Spanish,

Cultures:

Programs/Services: CRISIS INTERVENTION, FULL SERVICE PARTNERSHIP (FSP),
MEDICATION SUPPORT, MENTAL HEALTH PROMOTION,
MENTAL HEALTH SERVICES* (MHS), PSYCHOLOGICAL
TESTING, TARGETED CASE MANAGEMENT (TCM)

ADA Facility: Yes

Website: <https://www.movinglivesforward.org/>

Email:

List of Practitioners

Not Available

Service Area 2

OUTPATIENT

**7174 7174 SFV CMHC INC CORNERSTONE
14660 OXNARD ST
VAN NUYS, CA 91411-3119**

Phone: 818-901-4836

Hours of Operation: MON - FRI 8:00 AM - 6:00 PM

Accepting Beneficiaries: No

Accessible By: CONTACT PROVIDER

Provider: NGA

Supervisory District: 3

Age Group Served: All Ages

Languages: English, Spanish,

Cultures:

Programs/Services: COMMUNITY OUTREACH, DUAL DIAGNOSIS, MENTAL HEALTH SERVICES* (MHS), TARGETED CASE MANAGEMENT (TCM), CRISIS INTERVENTION, MEDICATION SUPPORT

ADA Facility: Yes

Website: <https://www.movinglivesforward.org/>

Email:

List of Practitioners

Not Available

Service Area 2

OUTPATIENT

**7177 7177 SFV EAST VALLEY CMHC-MCDONALD CAREY
11631 VICTORY BLVD
NORTH HOLLYWOOD, CA 91606-3572**

Phone: 818-908-3855

Hours of Operation: MON - FRI 8:00 AM - 5:00 PM

Accepting Beneficiaries: Yes

Accessible By: CONTACT PROVIDER

Provider: NGA

Supervisory District: 3

Age Group Served: 21+

Languages: English, Spanish,

Cultures: Co-occurring Substance Use Disorders, Forensic Legal, Homeless Housing, Race Ethnicity, Trauma, Under Represented Populations,

Programs/Services: CALWORKS, CRISIS INTERVENTION, MEDICATION SUPPORT, MENTAL HEALTH SERVICES* (MHS), PSYCHOLOGICAL TESTING, TARGETED CASE MANAGEMENT (TCM)

ADA Facility: Yes

Website: <https://www.movinglivesforward.org/>

Email:

List of Practitioners

Not Available

Service Area 2

OUTPATIENT

**7235 7235 SFVCMH/VICTORY WELLNESS CENTER
6501 VAN NUYS BLVD
VAN NUYS, CA 91401-1425**

Phone: 818-989-7475

Hours of Operation: Victory Wellness Center: M-F 8:30-5 / Client Run Center: Tues 9-5:30; WRF 10:30 - 7; Sat 9-5:30

Accepting Beneficiaries: No

Accessible By: CONTACT PROVIDER

Provider: NGA

Supervisory District: 3

Age Group Served: All Ages

Languages: English, Farsi, Spanish,

Cultures:

Programs/Services: MEDICATION SUPPORT, CRISIS INTERVENTION, MENTAL HEALTH SERVICES* (MHS), PREVENTION & EARLY INTERVENTION (PEI)

ADA Facility: Yes

Website: <https://www.movinglivesforward.org/>

Email:

List of Practitioners

Not Available

Service Area 2

OUTPATIENT

**7247 7247 CHILD + FAMILY GUIDANCE CENTER-BALBOA
8550 BALBOA BLVD
NORTHRIDGE, CA 91325-3562**

Phone: 818-830-0200

Hours of Operation: MON - THUR 8:30 AM - 7:00 PM; FRI 8:30 AM - 5:30 P

Accepting Beneficiaries: Yes

Accessible By: CONTACT PROVIDER

Provider: NGA

Supervisory District: 3

Age Group Served: All Ages

Languages: English, Spanish,

Cultures:

Programs/Services: COMMUNITY OUTREACH, CRISIS INTERVENTION, MENTAL HEALTH SERVICES* (MHS), SPECIALIZED FOSTER CARE, TARGETED CASE MANAGEMENT (TCM), MEDICATION SUPPORT

ADA Facility: Yes

Website: www.childguidance.org

Email:

List of Practitioners

Not Available

Service Area 2

OUTPATIENT

**7252 7252 SFVCMH/ADULT FCCS
14515 HAMLIN STREET SUITE 200
VAN NUYS, CA 91411-1608**

Phone: 818-373-4993

Hours of Operation: MON - FRI 8:30 AM - 5:00 PM

Accepting Beneficiaries: Yes

Accessible By: CONTACT PROVIDER

Provider: NGA

Supervisorial District: 3

Age Group Served: All Ages

Languages: English, Farsi, Spanish,

Cultures: Homeless Housing,

Programs/Services: CRISIS INTERVENTION, MEDICATION SUPPORT, MENTAL HEALTH SERVICES* (MHS), PSYCHOLOGICAL TESTING

ADA Facility: Yes

Website: <https://www.movinglivesforward.org/>

Email:

List of Practitioners

Not Available

Service Area 2

OUTPATIENT

**7283 7283A TOPANGA WEST GUEST HOME
22115 ROSCOE BLVD
CANOGA PARK, CA 91304-3839**

Phone: 8188848100

Hours of Operation: MON - FRI 8:30 AM - 5:00 PM

Accepting Beneficiaries: Yes

Accessible By: By Referral Only

Provider: NGA

Supervisorial District: 3

Age Group Served: All Ages

Languages: English, Tagalog,

Cultures:

Programs/Services: CRISIS INTERVENTION, MENTAL HEALTH SERVICES* (MHS), PSYCHOLOGICAL TESTING, TARGETED CASE MANAGEMENT (TCM), WELLNESS CENTER

ADA Facility: Yes

Website: www.acthealthwellness.com

Email: mmcdonald@topangawest.com

List of Practitioners

Not Available

Service Area 2

OUTPATIENT

**7320 7320 SFV CMHC TRANSITIONAL YOUTH
14535 SHERMAN CIRCLE
VAN NUYS, CA 91405-3087**

Phone: 818-901-4830

Hours of Operation: MWRF 8:30 - 5; T 8:30 - 7

Accepting Beneficiaries: Yes

Accessible By: CONTACT PROVIDER

Provider: NGA

Supervisory District: 3

Age Group Served: All Ages

Languages: Armenian, English, Spanish,

Cultures:

Programs/Services: FULL SERVICE PARTNERSHIP (FSP), MEDICATION SUPPORT, MENTAL HEALTH SERVICES* (MHS), PREVENTION & EARLY INTERVENTION (PEI), PSYCHOLOGICAL TESTING, SPECIALIZED FOSTER CARE

ADA Facility: Yes

Website: <https://www.movinglivesforward.org/>

Email:

List of Practitioners

Not Available

Service Area 2

OUTPATIENT

**7322 7322 SFVCMHC HOMEBOUND
14600 SHERMAN WAY SUITE 100 D AND 200
VAN NUYS, CA 91405-2283**

Phone: 818-374-6901

Hours of Operation: MON - FRI 8:30 AM - 5:00 PM

Accepting Beneficiaries: Yes

Accessible By: CONTACT PROVIDER

Provider: NGA

Supervisorial District: 3

Age Group Served: All Ages

Languages: Arabic, Armenian, English, Farsi, Spanish,

Cultures: Homeless Housing,

Programs/Services: MENTAL HEALTH SERVICES* (MHS), MEDICATION SUPPORT,
TARGETED CASE MANAGEMENT, MEDICATION SUPPORT,,
PREVENTION & EARLY INTERVENTION (PEI)

ADA Facility: Yes

Website: <https://www.movinglivesforward.org/>

Email:

List of Practitioners

Not Available

Service Area 2

OUTPATIENT

**7354 7354 CENTRAL VALLEY + Y + F CENTER
14624 SHERMAN CIR STE 502 AND 508
VAN NUYS, CA 91405-2289**

Phone: 818-908-4990

Hours of Operation: MON - THURS 9:00 AM - 7:00 PM; FRI 8:30 AM - 5:30

Accepting Beneficiaries: Yes

Accessible By: CONTACT PROVIDER

Provider: NGA

Supervisorial District: 3

Age Group Served: 0-20

Languages: Armenian, English, Russian, Spanish,

Cultures:

Programs/Services: CRISIS INTERVENTION, MEDICATION SUPPORT, MENTAL HEALTH SERVICES* (MHS), SPECIALIZED FOSTER CARE

ADA Facility: Yes

Website: <https://www.movinglivesforward.org/>

Email:

List of Practitioners

Not Available

Service Area 2

OUTPATIENT

**7355 7355 SFVCMHC YOUTH CONTACT FCCS
14550 SHERMAN CIRCLE
VAN NUYS, CA 91405-2210**

Phone: 818-901-4879

Hours of Operation: MW 8-6; TR 9-7; F 8-5

Accepting Beneficiaries: Yes

Accessible By: CONTACT PROVIDER

Provider: NGA

Supervisory District: 3

Age Group Served: 0-20

Languages: Armenian, English, Farsi, Spanish,

Cultures: Trauma,

Programs/Services: FIELD CAPABLE CLINICAL SERVICES (FCCS), MEDICATION SUPPORT, MENTAL HEALTH SERVICES* (MHS), PSYCHOLOGICAL TESTING

ADA Facility: Yes

Website: <https://www.movinglivesforward.org/>

Email:

List of Practitioners

Not Available

Service Area 2

OUTPATIENT

7356 7356 PHOENIX HOUSES OF LOS ANGELES INC
11600 ELDRIDGE AVE
LAKE VIEW TERRACE, CA 91342-6506

Phone: 818-686-3000

Hours of Operation: MON - FRI 8:00 AM - 5:00 PM

Accepting Beneficiaries: No

Accessible By: CONTACT PROVIDER

Provider: NGA

Supervisory District: 3

Age Group Served: All Ages

Languages: American Sign Language, Arabic, Armenian, Cambodian, Cantonese, English, Farsi, Hmong, Korean, Mandarin, Other Chinese, Russian, Spanish, Tagalog, Vietnamese

Cultures:

Programs/Services: DUAL DIAGNOSIS, MEDICATION SUPPORT, EARLY AND PERIODIC SCREENING DIAGNOSIS AND TESTING, MENTAL HEALTH SERVICES* (MHS), OUTPATIENT SUBSTANCE ABUSE GROUPS, PREVENTION & EARLY INTERVENTION (PEI), THERAPEUTIC BEHAVIORAL SERVICES (TBS)

ADA Facility: Yes

Website: www.phoenixhouse.org

Email:

List of Practitioners

Not Available

Service Area 2

OUTPATIENT

7358 7358 SAN FERNANDO VALLEY CMHC - AB34
14660 OXNARD STREET
VAN NUYS, CA 91411-3119

Phone: 818-785-0103

Hours of Operation: Monday to Friday 8 - 5

Accepting Beneficiaries: Yes

Accessible By: CONTACT PROVIDER

Provider: NGA

Supervisory District: 3

Age Group Served: All Ages

Languages: English, Spanish,

Cultures: Homeless Housing,

Programs/Services: CRISIS INTERVENTION, FULL SERVICE PARTNERSHIP (FSP),
MEDICATION SUPPORT, MENTAL HEALTH SERVICES* (MHS),
PSYCHOLOGICAL TESTING

ADA Facility: Yes

Website: <https://www.movinglivesforward.org/>

Email:

List of Practitioners

Not Available

Service Area 2

OUTPATIENT

**7362 7362 ASIAN PACIFIC COUNSELING + TX CENTER SFV
15350 SHERMAN WAY STE 200
VAN NUYS, CA 91406-4203**

Phone: (818)267-1100

Hours of Operation: MON - FRI 9:00 AM - 5:30 PM

Accepting Beneficiaries: Yes

Accessible By: Phone Only

Provider: NGA

Supervisorial District: 3

Age Group Served: All Ages

Languages: Cambodian, English, Korean, Tagalog, Vietnamese

Cultures:

Programs/Services: MEDICATION SERVICES, MENTAL HEALTH SERVICES,
TARGETED CASE MANAGEMENT (TCM)

ADA Facility: Yes

Website: www.ssg.org

Email:

List of Practitioners

Not Available

Service Area 2

OUTPATIENT

7369 7369 SAN FERNANDO VALLEY CMHC - FAMILY LINKS
11565 LAUREL CANYON 100,102,114,116,117
MISSION HILLS, CA 91340-4168

Phone: 818-361-5030

Hours of Operation: MON - THURS 8:00 AM - 7:00 PM; FRI 8:00 AM - 5:00

Accepting Beneficiaries: Yes

Accessible By: CONTACT PROVIDER

Provider: NGA

Supervisory District: 3

Age Group Served: 0-20

Languages: English, Spanish,

Cultures: Co-occurring Substance Use Disorders, Forensic Legal, Homeless Housing, Race Ethnicity, Trauma, Under Represented Populations,

Programs/Services: MEDICATION SUPPORT, MENTAL HEALTH SERVICES* (MHS), PREVENTION & EARLY INTERVENTION (PEI), SPECIALIZED FOSTER CARE, TARGETED CASE MANAGEMENT (TCM)

ADA Facility: Yes

Website: <https://www.movinglivesforward.org/>

Email:

List of Practitioners

Not Available

Service Area 2

OUTPATIENT

7371 7371 EL CENTRO DE AMISTAD - SAN FERNANDO
566 S BRAND BLVD
SAN FERNANDO, CA 91340-4002

Phone: 818-898-0223

Hours of Operation: MON - FRI 8:30 AM - 5:00 PM; TUES 8:30 AM - 7:30 PM

Accepting Beneficiaries: Yes

Accessible By: CONTACT PROVIDER

Provider: NGA

Supervisorial District: 3

Age Group Served: All Ages

Languages: English, Spanish,

Cultures:

Programs/Services: COMMUNITY OUTREACH, MEDICATION SUPPORT, MENTAL HEALTH SERVICES* (MHS), SPECIALIZED FOSTER CARE, TARGETED CASE MANAGEMENT (TCM)

ADA Facility: Yes

Website: www.elcentrodeamistad.com

Email:

List of Practitioners

Not Available

Service Area 2

OUTPATIENT

**7378 7378 PACIFIC ASIAN COUNSELING SERVICES SFV
6851 LENNOX AVENUE STE 400
VAN NUYS, CA 91405-4073**

Phone: 818-989-9214

Hours of Operation: MON - FRI 9:00 AM - 6:30 PM

Accepting Beneficiaries: Yes

Accessible By: CONTACT PROVIDER

Provider: NGA

Supervisorial District: 3

Age Group Served: All Ages

Languages: English, Spanish,

Cultures: Co-occurring Substance Use Disorders, Race Ethnicity, Spirituality, Trauma, Under Represented Populations,

Programs/Services: MEDICATION SUPPORT, MENTAL HEALTH SERVICES* (MHS), SPECIALIZED FOSTER CARE

ADA Facility: Yes

Website: www.pacsla.org

Email: info@pacsla.org

List of Practitioners

Not Available

Service Area 2

OUTPATIENT

7390 7390 CHILD + FAM GUIDANCE C VAN NUYS
6851 LENNOX AVENUE SUITES 100 & 200
VAN NUYS, CA 91405-4073

Phone: 818-739-5400

Hours of Operation: MON - THURS 8:30 AM - 8:30 PM; FRI 8:30 AM - 5:30

Accepting Beneficiaries: Yes

Accessible By: CONTACT PROVIDER

Provider: NGA

Supervisory District: 3

Age Group Served: All Ages

Languages: English, Spanish,

Cultures:

Programs/Services: CRISIS INTERVENTION, FIELD CAPABLE CLINICAL SERVICES (FCCS), FULL SERVICE PARTNERSHIP (FSP), MEDICATION SUPPORT, MENTAL HEALTH SERVICES* (MHS), PSYCHOLOGICAL TESTING, SPECIALIZED FOSTER CARE, TARGETED CASE MANAGEMENT (TCM)

ADA Facility: Yes

Website: www.childguidance.org

Email:

List of Practitioners

Not Available

Service Area 2

OUTPATIENT

**7420 7420 HILLVIEW MHC AUXILIARY OUTPATIENT
12408 VAN NUYS BLVD BLDG D
PACOIMA, CA 91331-1313**

Phone: 818-896-1161, extension 200

Hours of Operation: MON - FRI 8:00 AM - 6:30 PM

Accepting Beneficiaries: Yes

Accessible By: By Referral Only

Provider: NGA

Supervisorial District: 3

Age Group Served: All Ages

Languages: English, Spanish,

Cultures: Co-occurring Substance Use Disorders, Forensic Legal, Gender Identity, Homeless Housing, Sexual Orientation, Under Represented Populations,

Programs/Services: AB019, FULL SERVICE PARTNERSHIP (FSP), MEDICATION SUPPORT, MENTAL HEALTH SERVICES* (MHS), PSYCHOLOGICAL TESTING

ADA Facility: Yes

Website: www.hillviewmhc.org

Email: info@hillviewmhc.org

List of Practitioners

Not Available

Service Area 2

OUTPATIENT

**7445 7445 SFVCMHC CSOC FCCS
6305 WOODMAN AVE
VAN NUYS, CA 91401-2346**

Phone: 818-908-4999

Hours of Operation: MON - THURS 8:00 AM - 7:00 PM; FRI 8:00 AM - 5:00

Accepting Beneficiaries: Yes

Accessible By: CONTACT PROVIDER

Provider: NGA

Supervisory District: 3

Age Group Served: All Ages

Languages: English,

Cultures: Gender Identity, Race Ethnicity, Sexual Orientation, Trauma, Under Represented Populations,

Programs/Services: MEDICATION SUPPORT, COMMUNITY OUTREACH SERVICES, MENTAL HEALTH SERVICES* (MHS), PREVENTION & EARLY INTERVENTION (PEI), TARGETED CASE MANAGEMENT (TCM)

ADA Facility: Yes

Website: <https://www.movinglivesforward.org/>

Email:

List of Practitioners

Not Available

Service Area 2

OUTPATIENT

**7451 7451 SFVCMHC INC/WRAPAROUND
6305 WOODMAN AVE
VAN NUYS, CA 91405-2346**

Phone: 818-908-4999

Hours of Operation: MON - FRI 8:00 AM - 5:00 PM

Accepting Beneficiaries: Yes

Accessible By: CONTACT PROVIDER

Provider: NGA

Supervisory District: 3

Age Group Served: All Ages

Languages: English,

Cultures: Trauma,

Programs/Services: MENTAL HEALTH SERVICES* (MHS), CRISIS INTERVENTION, TARGETED CASE MANAGEMENT, MEDICATION SUPPORT, COMMUNITY OUTREACH SERVICES, SUPPORT SERVICES

ADA Facility: Yes

Website: <https://www.movinglivesforward.org/>

Email:

List of Practitioners

Not Available

Service Area 2

OUTPATIENT

**7481 7481 STIRLING BEHAVIORAL HEALTH INSTITUTE
6931 VAN NUYS BLVD
VAN NUYS, CA 91405-3980**

Phone: 818-376-0134

Hours of Operation: MON, WED 8:30 AM - 6:00 PM; Tu, Th, Fr 8:30 AM to 5 PM

Accepting Beneficiaries: No

Accessible By: CONTACT PROVIDER

Provider: NGA

Supervisorial District: 3

Age Group Served: All Ages

Languages: English, Farsi, Mandarin, Spanish,

Cultures:

Programs/Services: MEDICATION SUPPORT, MENTAL HEALTH SERVICES* (MHS),
SCHOOL-BASED SERVICES, PREVENTION & EARLY
INTERVENTION (PEI), SPECIALIZED FOSTER CARE

ADA Facility: Yes

Website: www.stirlingbhi.org

Email: lgutierrez@stirlingbhi.org

List of Practitioners

Not Available

Service Area 2

OUTPATIENT

**7483 7483 COUNSELING4KIDS
601 S GLENOAKS BL STE 200
BURBANK, CA 91502-1474**

Phone: 818 441-7800

Hours of Operation: MON - FRI 8:30 AM - 5:00 PM

Accepting Beneficiaries: Yes

Accessible By: By Referral Only

Provider: NGA

Supervisorial District: 5

Age Group Served: All Ages

Languages: English, Spanish,

Cultures: Co-occurring Substance Use Disorders, Disabilities Special Needs, Forensic Legal, Gender Identity, Homeless Housing, Race Ethnicity, Sexual Orientation, Spirituality, Trauma, Under Represented Populations, Veterans,

Programs/Services: MEDICATION SUPPORT, MENTAL HEALTH SERVICES* (MHS), PSYCHOLOGICAL TESTING, SPECIALIZED FOSTER CARE

ADA Facility: Yes

Website: www.counseling4kids.org

Email:

List of Practitioners

Not Available

Service Area 2

OUTPATIENT

**7502 7502 PACIFIC CLINICS HYE WRAP OP
237 N CENTRAL AVENUE STE 235
GLENDALE, CA 91203-2531**

Phone: 818-547-9544

Hours of Operation: MON - FRI 8:00 AM - 6:30 PM

Accepting Beneficiaries: Yes

Accessible By: SCHOOL BASED PROGRAM

Provider: NGA

Supervisory District: 5

Age Group Served: All Ages

Languages: Armenian, English, Farsi, Spanish,

Cultures:

Programs/Services: FIELD CAPABLE CLINICAL SERVICES (FCCS), FULL SERVICE PARTNERSHIP (FSP), MEDICATION SUPPORT, MENTAL HEALTH SERVICES* (MHS), PSYCHOLOGICAL TESTING, SPECIALIZED FOSTER CARE

ADA Facility: Yes

Website: www.Pacificclinics.org

Email:

List of Practitioners

Not Available

Service Area 2

OUTPATIENT

7522 7522 TARZANA TREATMENT CENTERS, INC
18700 OXNARD STREET
TARZANA, CA 91356-1413

Phone: 818-996-1051

Hours of Operation: MON - FRI 8:00 AM - 5:00 PM

Accepting Beneficiaries: Yes

Accessible By: MON - FRI 8 AM - 5 PM

Provider: NGA

Supervisory District: 3

Age Group Served: 0-20

Languages: English, Farsi, Spanish,

Cultures: Co-occurring Substance Use Disorders, Gender Identity, Homeless Housing, Race Ethnicity, Sexual Orientation, Spirituality, Trauma,

Programs/Services: EARLY AND PERIODIC SCREENING DIAGNOSIS AND TESTING, FULL SERVICE PARTNERSHIP (FSP), MEDICATION SUPPORT, MENTAL HEALTH SERVICES* (MHS), PREVENTION & EARLY INTERVENTION (PEI), PSYCHOLOGICAL TESTING

ADA Facility: No

Website: www.tarzanatc.org

Email:

List of Practitioners

Not Available

Service Area 2

OUTPATIENT

7530 7530 TOBINWORLD
912 E BROADWAY Not Applicable
GLENDALE, CA 91205-1204

Phone: 818-242-8403 x 252

Hours of Operation: MON - FRI 8:30 AM – 5:00 PM

Accepting Beneficiaries: Yes

Accessible By: Phone / Walk-Ins

Provider: NGA

Supervisory District: 1

Age Group Served: All Ages

Languages: English, Spanish,

Cultures:

Programs/Services: MEDICATION SUPPORT, MENTAL HEALTH SERVICES* (MHS),
PSYCHOLOGICAL TESTING, TARGETED CASE MANAGEMENT
(TCM)

ADA Facility: Yes

Website: www.tobinworld.org

Email:

List of Practitioners

Not Available

Service Area 2

OUTPATIENT

**7547 7547 INSTITUTE FOR MULTICULTURAL COUNSELING +
EDUCATION
121 W LEXINGTON DRIVE STE 300
GLENDALE, CA 91203-2203**

Phone: 818-240-4311

Hours of Operation: MONDAY THRU FRIDAY 8:30 AM - 5:00 PM, evenings and weekends by schedule

Accepting Beneficiaries: Yes

Accessible By: By Referral Only

Provider: NGA

Supervisorial District: 5

Age Group Served: All Ages

Languages: Arabic, Armenian, English, Farsi, Korean, Spanish,

Cultures: Co-occurring Substance Use Disorders, Forensic Legal, Gender Identity, Race Ethnicity, Sexual Orientation, Spirituality, Trauma, Under Represented Populations,

Programs/Services: COMMUNITY OUTREACH SERVICES, EASTERN EUROPEAN/MIDDLE EASTERN, FULL SERVICE PARTNERSHIP (FSP), MEDICATION SUPPORT, MENTAL HEALTH SERVICES* (MHS), PSYCHOLOGICAL TESTING

ADA Facility: Yes

Website: www.imces.org

Email:

List of Practitioners

Not Available

Service Area 2

OUTPATIENT

7557 7557 HATHAWAY SYCAMORES CHILD AND FAMILY SERVICES
12450 VAN NUYS BLVD
PACOIMA, CA 91331-1392

Phone: 626 395 7100

Hours of Operation: MON 9:00 AM - 6:00 PM; TUES 9:00 AM-7:00 PM; WED 9

Accepting Beneficiaries: Yes

Accessible By: Phone / Walk-Ins

Provider: NGA

Supervisory District: 3

Age Group Served: All Ages

Languages: English, Spanish,

Cultures: Co-occurring Substance Use Disorders, Gender Identity, Trauma,

Programs/Services: THERAPEUTIC BEHAVIORAL SERVICES (TBS), MENTAL HEALTH SERVICES* (MHS), MEDICATION SUPPORT, CO-OCCURRING DISORDERS, PREVENTION/EARLY INTERVENTION (PEI), FIELD CAPABLE CLINICAL SERVICES (FCCS), PSYCHOLOGICAL TESTING

ADA Facility: Yes

Website: www.hathaway-sycamores.org

Email:

List of Practitioners

Not Available

Service Area 2

OUTPATIENT

**7559 7559 SPECIALIZED FC SANTA CLARITA
28490 AVENUE STANFORD STE 100
SANTA CLARITA, CA 91355-0921**

Phone: 213-739-5538

Hours of Operation: MON - FRI 8:00 AM - 5:00 PM

Accepting Beneficiaries: No

Accessible By: BY REFERRAL ONLY

Provider: DO

Supervisory District: 5

Age Group Served: All Ages

Languages: Armenian, English, Russian, Spanish,

Cultures:

Programs/Services: MENTAL HEALTH SERVICES* (MHS), CRISIS INTERVENTION,
TARGETED CASE MANAGEMENT, COMMUNITY OUTREACH
SERVICES

ADA Facility: Yes

Website: www.dmh.lacounty.gov

Email:

List of Practitioners

Not Available

Service Area 2

OUTPATIENT

**7564 7564 THE VILLAGE FAMILY SERVICES
6736 LAUREL CYN BLVD
NORTH HOLLYWOOD, CA 91606-1538**

Phone: 818-755-8786

Hours of Operation: Monday to Friday 9:00 AM- 5:30 PM

Accepting Beneficiaries: Yes

Accessible By: CONTACT PROVIDER

Provider: NGA

Supervisory District: 3

Age Group Served: All Ages

Languages: Armenian, English, Farsi, Korean, Spanish,

Cultures: Disabilities Special Needs, Forensic Legal, Gender Identity, Homeless Housing, Race Ethnicity, Sexual Orientation, Spirituality, Trauma, Under Represented Populations,

Programs/Services: MEDICATION SUPPORT, MENTAL HEALTH SERVICES* (MHS), PSYCHOLOGICAL TESTING, THERAPEUTIC BEHAVIORAL SERVICES (TBS)

ADA Facility: Yes

Website: <http://www.thevillagefs.org/>

Email:

List of Practitioners

Not Available

Service Area 2

OUTPATIENT

**7591 7591 OLIVE VIEW CMH URGENT CARE CENTER
14659 OLIVE VIEW DRIVE
SYLMAR, CA 91342-1652**

Phone: 818-485-0888

Hours of Operation: MON - FRI 8:00 AM - 10:00 PM; SAT & SUN 9:00 AM -
Accepting Beneficiaries: Yes

Accessible By: MON - FRI 8 AM - 7 PM; SAT 9 AM - 5:30 PM

Provider: DO

Supervisorial District: 3

Age Group Served: All Ages

Languages: Armenian, English, Farsi, Spanish,

Cultures: Co-occurring Substance Use Disorders,

Programs/Services: CRISIS INTERVENTION, MEDICATION SUPPORT, MENTAL
HEALTH SERVICES* (MHS), TARGETED CASE MANAGEMENT
(TCM)

ADA Facility: Yes

Website: www.dmh.lacounty.gov

Email:

List of Practitioners

Not Available

Service Area 2

OUTPATIENT

**7597 7597 SFVCMHC TBS
6305 WOODMAN AVE
VAN NUYS, CA 91401-2346**

Phone: 818-908-4999

Hours of Operation: M-R 8-7; F 8-5

Accepting Beneficiaries: No

Accessible By: CONTACT PROVIDER

Provider: NGA

Supervisory District: 3

Age Group Served: All Ages

Languages: English, Russian, Spanish,

Cultures:

Programs/Services: MENTAL HEALTH SERVICES* (MHS), TBS

ADA Facility: Yes

Website: <https://www.movinglivesforward.org/>

Email:

List of Practitioners

Not Available

Service Area 2

OUTPATIENT

7600 7600 HATHAWAY SYCAMORES CHILD AND FAMILY SERVICES
12510 VAN NUYS BLVD
PACOIMA, CA 91331-1338

Phone: 626 395 7100

Hours of Operation: MON - FRI 8:00 AM - 5:00 PM

Accepting Beneficiaries: Yes

Accessible By: Phone / Walk-Ins

Provider: NGA

Supervisory District: 3

Age Group Served: All Ages

Languages: English, Spanish,

Cultures: Co-occurring Substance Use Disorders, Disabilities Special Needs, Gender Identity, Homeless Housing, Race Ethnicity, Sexual Orientation, Trauma, Under Represented Populations, Veterans,

Programs/Services: WRAPAROUND, MAT, THERAPEUTIC BEHAVIORAL SERVICES (TBS), FULL SERVICE PARTNERSHIP (FSP), MEDICATION SUPPORT, MENTAL HEALTH SERVICES* (MHS), PSYCHOLOGICAL TESTING, THERAPEUTIC BEHAVIOR SERVICES, WRAPAROUND SERVICES, MULTI-DISCIPLINARY ASSESSMENT TEAM (MAT),

ADA Facility: Yes

Website: www.hathaway-sycamores.org

Email:

List of Practitioners

Not Available

Service Area 2

OUTPATIENT

**7624 7624 THE HELP GROUP CHILD AND FAMILY CENTER
15339 SATICOY STREET
VAN NUYS, CA 91406-3345**

Phone: 818-267-2753

Hours of Operation: M-F 9:00 AM - 6:00 PM; SAT 9:00 AM - 3:00 PM

Accepting Beneficiaries: Yes

Accessible By: Phone / Walk-Ins

Provider: NGA

Supervisorial District: 3

Age Group Served: All Ages

Languages: Arabic, Armenian, English, Farsi, Russian, Spanish, Tagalog,
Cultures:

Programs/Services: CALWORKS, MENTAL HEALTH SERVICES* (MHS), FIELD
CAPABLE CLINICAL SERVICES (FCCS), FULL SERVICE
PARTNERSHIP (FSP), MEDICATION SUPPORT

ADA Facility: Yes

Website: www.thehelpgroup.org

Email: crivera@thehelpgroup.org

List of Practitioners

Not Available

Service Area 2

OUTPATIENT

7626 7626 AVIVA FAMILY AND CHILDREN'S SERVICES
5900 SEPULVEDA BLVD
VAN NUYS, CA 91411-2511

Phone: 818-980-3200

Hours of Operation: MON - FRI 8:00 AM - 5:00 PM

Accepting Beneficiaries: Yes

Accessible By: CONTACT PROVIDER

Provider: NGA

Supervisorial District: 3

Age Group Served: All Ages

Languages: English,

Cultures:

Programs/Services: MENTAL HEALTH SERVICES* (MHS), PREVENTION & EARLY INTERVENTION (PEI), WRAPAROUND SERVICES

ADA Facility: Yes

Website: <http://www.aviva.org/>

Email:

List of Practitioners

Not Available

Service Area 2

OUTPATIENT

7651 7651 SAN FERNANDO MHS FSP PROGRAM
10515 BALBOA BL STE 260 AND 376
GRANADA HILLS, CA 91344-6343

Phone: 818-832-2400

Hours of Operation: MON - FRI 8:00 AM - 6:30 PM

Accepting Beneficiaries: Yes

Accessible By: MON - FRI 8:00 AM - 6:30 PM

Provider: DO

Supervisorial District: 3

Age Group Served: 21+

Languages: English, Spanish,

Cultures:

Programs/Services: CRISIS INTR, CASE MNGMT, MENTAL HEALTH SERVICES* (MHS), MEDICATION SUPPORT, SUPPORT SERVICES, COMMUNITY OUTREACH SERVICES

ADA Facility: Yes

Website: www.dmh.lacounty.gov

Email:

List of Practitioners

Not Available

Service Area 2

OUTPATIENT

7694 7694 JEWISH FAMILY SERVICE OF LOS ANGELES
12821 VICTORY BLVD
NORTH HOLLYWOOD, CA 91606-3012

Phone: 818-432-5025

Hours of Operation: MON - TH 8:30AM - 5:00PM &
FRI 8:30 - 3:30PM

Accepting Beneficiaries: Yes

Accessible By: CONTACT PROVIDER

Provider: NGA

Supervisorial District: 3

Age Group Served: All Ages

Languages: English, Farsi, Russian, Spanish,

Cultures: Disabilities Special Needs, Trauma, Under Represented
Populations,

Programs/Services: MEDICATION SUPPORT, MENTAL HEALTH SERVICES* (MHS),
CRISIS INTERVENTION, TARGETED CASE MANAGEMENT

ADA Facility: Yes

Website: www.jfsla.org

Email:

List of Practitioners

Not Available

Service Area 2

OUTPATIENT

**7746 7746 WEST VALLEY MHC FCCS AND FSP
6800 OWENSMOUTH AVENUE SUITE 160
CANOGA PARK, CA 91303-3159**

Phone: 818-610-6700

Hours of Operation: MON - FRI 8:00 AM - 5:00 PM

Accepting Beneficiaries: Yes

Accessible By: MON, TUE, THU, FRI 8 AM - 5 PM; WED 8 AM - 8 PM

Provider: DO

Supervisory District: 3

Age Group Served: 21+

Languages: English, Spanish,

Cultures:

Programs/Services: FIELD CAPABLE CLINICAL SERVICES (FCCS), MENTAL HEALTH SERVICES*(MHS), TARGETED CASE MANAGEMENT, CRISIS INTERVENTION, MEDICATION SUPPORT, MEDICATION SUPPORT

ADA Facility: Yes

Website: www.dmh.lacounty.gov

Email:

List of Practitioners

Not Available

Service Area 2

OUTPATIENT

**7754 7754 SPECIALIZED FC CHATSWORTH
20151 NORDHOFF STREET
CHATSWORTH, CA 91311-6215**

Phone: 213-739-5540

Hours of Operation: MON - FRI 8:00 AM - 5:30 PM

Accepting Beneficiaries: No

Accessible By: BY REFERRAL ONLY

Provider: DO

Supervisorial District: 3

Age Group Served: All Ages

Languages: Armenian, English, Russian, Spanish,

Cultures:

Programs/Services: COMMUNITY OUTREACH SERVICES, MENTAL HEALTH SERVICES* (MHS), CRISIS INTERVENTION, TARGETED CASE MANAGEMENT (TCM)

ADA Facility: Yes

Website: www.dmh.lacounty.gov

Email:

List of Practitioners

Not Available

Service Area 2

OUTPATIENT

**7760 7760 SAN FERNANDO ADULT FCCS
10515 BALBOA BLVD
GRANADA HILLS, CA 91344-6343**

Phone: 818-488-3888

Hours of Operation: MON - FRI 8:00 AM - 6:30 PM

Accepting Beneficiaries: No

Accessible By: MON - FRI 8:00 AM - 6:30 PM

Provider: DO

Supervisorial District: 3

Age Group Served: All Ages

Languages: English,

Cultures:

Programs/Services: COMMUNITY OUTREACH, CRISIS INTERVENTION, FIELD CAPABLE CLINICAL SERVICES (FCCS), MEDICATION SUPPORT, MENTAL HEALTH SERVICES* (MHS), TARGETED CASE MANAGEMENT (TCM)

ADA Facility: No

Website: www.dmh.lacounty.gov

Email:

List of Practitioners

Not Available

Service Area 2

OUTPATIENT

**7761 7761 CORNERSTONE-STREET TO HOME
14660 OXNARD STREET
VAN NUYS, CA 91411-3119**

Phone: 818-901-4836

Hours of Operation: MON - FRI 8:00 AM - 6:00 PM; SAT - SUN 8:00 AM - 4

Accepting Beneficiaries: No

Accessible By: CONTACT PROVIDER

Provider: NGA

Supervisory District: 3

Age Group Served: All Ages

Languages: English,

Cultures:

Programs/Services: AB109, CRISIS INTERVENTION, FULL SERVICE PARTNERSHIP (FSP), MEDICATION SUPPORT, MENTAL HEALTH SERVICES* (MHS), PSYCHOLOGICAL TESTING, TARGETED CASE MANAGEMENT (TCM)

ADA Facility: No

Website: <https://www.movinglivesforward.org/>

Email:

List of Practitioners

Not Available

Service Area 2

OUTPATIENT

**7812 7812 DIDI HIRSCH GLENDALE CENTER
1540 E COLORADO STREET
GLENDALE, CA 91205-1514**

Phone: 818-244-7257

Hours of Operation: MON - THURS 8:30 AM - 8:00 PM; FRI 8:30 AM - 5:00 PM

Accepting Beneficiaries: Yes

Accessible By: Phone / Walk-Ins

Provider: NGA

Supervisory District: 1

Age Group Served: All Ages

Languages: Armenian, English, Farsi, Korean, Mandarin, Russian, Spanish,

Cultures:

Programs/Services: TARGETED CASE MANAGEMENT, CRISIS INTERVENTION,
MENTAL HEALTH SERVICES* (MHS), PREVENTION & EARLY
INTERVENTION

ADA Facility: Yes

Website: <http://www.didihirsch.org>

Email:

List of Practitioners

Not Available

Service Area 2

OUTPATIENT

**7814 7814 SCHOOL MENTAL HEALTH VALLEY CLINIC
6651A BALBOA BLVD
VAN NUYS, CA 91406-5529**

Phone: 323-754-2856

Hours of Operation: MON - FRI 8:00 AM - 5:00 PM

Accepting Beneficiaries: No

Accessible By: SCHOOL BASED PROGRAM

Provider: NGA

Supervisory District: 3

Age Group Served: All Ages

Languages: English, Spanish,

Cultures:

Programs/Services: CHILD SERVICES, TARGETED CASE MANAGEMENT, CRISIS INTERVENTION, MENTAL HEALTH SERVICES*(MHS)

ADA Facility: Yes

Website: n/a

Email:

List of Practitioners

Not Available

Service Area 2

OUTPATIENT

**7818 7818 DMH DHS COLLABORATION MID VALLEY
7515 VAN NUYS BLVD
VAN NUYS, CA 91405-1949**

Phone: 213-739-6267

Hours of Operation: MON-FRI 8.00 AM TO 5:00 PM

Accepting Beneficiaries: Yes

Accessible By: By Referral Only

Provider: DO

Supervisorial District: 3

Age Group Served: All Ages

Languages: English, Spanish,

Cultures: Under Represented Populations,

Programs/Services: CRISIS INTERVENTION, MENTAL HEALTH SERVICES* (MHS), TARGETED CASE MANAGEMENT, TELE-MEDICINE FOR MEDICATION SUPPORT

ADA Facility: Yes

Website: www.dmh.lacounty.gov

Email:

List of Practitioners

Not Available

Service Area 2

OUTPATIENT

7832 7832 TARZANA TREATMENT CENTERS INC
7101 BAIRD AVE
RESEDA, CA 91335-4150

Phone: 818-342-5897

Hours of Operation: MON - FRI 8:00 AM - 5:00 PM

Accepting Beneficiaries: Yes

Accessible By: CONTACT PROVIDER

Provider: NGA

Supervisory District: 3

Age Group Served: All Ages

Languages: English, Farsi, Spanish,

Cultures: Co-occurring Substance Use Disorders, Gender Identity, Homeless Housing, Race Ethnicity, Sexual Orientation, Spirituality, Trauma, Under Represented Populations, Veterans,

Programs/Services: MEDICATION SUPPORT, MENTAL HEALTH SEERVICES* (MHS), TARGETED CASE MANAGEMENT , CRISIS INTERVENTION

ADA Facility: Yes

Website: www.tarzanatc.org

Email:

List of Practitioners

Not Available

Service Area 2

OUTPATIENT

7833 7833 TARZANA TREATMENT CENTERS INC
8330 RESEDA BLVD
NORTHRIDGE, CA 91324-4619

Phone: 818-342-5897

Hours of Operation: MON - FRI 8:00 AM - 5:00 PM

Accepting Beneficiaries: Yes

Accessible By: CONTACT PROVIDER

Provider: NGA

Supervisorial District: 3

Age Group Served: All Ages

Languages: English, Mandarin, Spanish, Tagalog,

Cultures: Co-occurring Substance Use Disorders, Gender Identity, Race
Ethnicity, Sexual Orientation, Spirituality, Trauma, Under
Represented Populations,

Programs/Services: MEDICATION SUPPORT, MENTAL HEALTH SEERVICES*
(MHS), TARGETED CASE MANAGEMENT , CRISIS
INTERVENTION

ADA Facility: Yes

Website: www.tarzanatc.org

Email:

List of Practitioners

Not Available

Service Area 2

OUTPATIENT

7855 7855 PENNY LANE CENTERS
10526 DUBNOFF WAY
NORTH HOLLYWOOD, CA 91606-3921

Phone: 818-755-4950

Hours of Operation: MON-THUR 8:00 AM- 8:00 PM; FRI 8:00 AM-6:00 PM

Accepting Beneficiaries: No

Accessible By: CONTACT PROVIDER

Provider: NGA

Supervisorial District: 3

Age Group Served: All Ages

Languages: English,

Cultures:

Programs/Services: MEDICATION SUPPORT, MENTAL HEALTH SERVICES* (MHS), PSYCHOLOGICAL TESTING, TARGETED CASE MANAGEMENT (TCM)

ADA Facility: Yes

Website: www.pennylane.org

Email: MFerrante@pennylane.org

List of Practitioners

Not Available

Service Area 2

OUTPATIENT

**7857 7857 THE VILLAGE FAMILY SERVICES
6801 COLDWATER CANYON AVE 1E
NORTH HOLLYWOOD, CA 91605-5167**

Phone: 818-755-8786

Hours of Operation: Monday to Friday 9:00 AM- 5:30 PM

Accepting Beneficiaries: Yes

Accessible By: CONTACT PROVIDER

Provider: NGA

Supervisory District: 3

Age Group Served: All Ages

Languages: English, Spanish,

Cultures: Co-occurring Substance Use Disorders, Forensic Legal, Homeless Housing, Race Ethnicity, Sexual Orientation, Trauma, Under Represented Populations,

Programs/Services: MENTAL HEALTH SERVICES* (MHS), TARGETED CASE MANAGEMENT, CRISIS INTERVENTION

ADA Facility: Yes

Website: <http://www.thevillagefs.org/>

Email:

List of Practitioners

Not Available

Service Area 2

OUTPATIENT

**7868 7868 DIDI HIRSCH MHS-VIA AVANTA
11643 GLENOAKS BLVD
PACOIMA, CA 91331-1050**

Phone: 818-897-2609

Hours of Operation: MON - FRI 8:30 AM - 5:00 PM

Accepting Beneficiaries: No

Accessible By: CONTACT PROVIDER

Provider: NGA

Supervisory District: 3

Age Group Served: All Ages

Languages: American Sign Language, Arabic, Armenian, Cambodian, Cantonese, English, Farsi, Hmong, Korean, Mandarin, Other Chinese, Russian, Spanish, Tagalog, Vietnamese

Cultures:

Programs/Services: MENTAL HEALTH SERVICES* (MHS), PREVENTION & EARLY INTERVENTION (PEI)

ADA Facility: Yes

Website: <http://www.didihirsch.org>

Email:

List of Practitioners

Not Available

Service Area 2

OUTPATIENT

7913 7913 OV CMH UCC CRISIS STABILIZATION
14659 OLIVE VIEW DRIVE
SYLMAR, CA 91342-1652

Phone: 818-485-0888

Hours of Operation: MON - FRI 8:00 AM - 10:00 PM; SAT & SUN 9:00 AM -
Accepting Beneficiaries: Yes

Accessible By: NO

Provider: DO

Supervisorial District: 3

Age Group Served: All Ages

Languages: English,

Cultures:

Programs/Services: , CRISIS STABILIZATION,

ADA Facility: No

Website: www.dmh.lacounty.gov

Email:

List of Practitioners

Not Available

Service Area 2

OUTPATIENT

**7927 7927A ACT HEALTH AND WELLNESS CLINIC
9003 RESEDA BLVD
NORTHRIDGE, CA 91324-3939**

Phone: 818-884-8100

Hours of Operation: MON - FRI 8:00 AM - 5:00 PM

Accepting Beneficiaries: Yes

Accessible By: CONTACT PROVIDER

Provider: NGA

Supervisorial District: 3

Age Group Served: All Ages

Languages: English, Farsi, Spanish, Tagalog,

Cultures: Homeless Housing,

Programs/Services: MEDICATION SUPPORT, MENTAL HEALTH SERVICES* (MHS),
CRISIS INTERVENTION, TARGETED CASE MANAGEMENT

ADA Facility: Yes

Website: www.acthealthwellness.com

Email: mmcdonald@topangawest.com

List of Practitioners

Not Available

Service Area 2

OUTPATIENT

**7930 7930 OLIVE VIEW MEDICAL HUB
14445 OLIVE VIEW DRIVE
SYLMAR, CA 91342-1437**

Phone: 818-364-4680

Hours of Operation: MON - FRI 8:00 AM - 5:00 PM

Accepting Beneficiaries: No

Accessible By: BY REFERRAL ONLY

Provider: DO

Supervisorial District: 3

Age Group Served: All Ages

Languages: English,

Cultures:

Programs/Services: CASE MNGMT/CHILD ASSESSMENT UNIT

ADA Facility: No

Website: www.dmh.lacounty.gov

Email:

List of Practitioners

Not Available

Service Area 2

OUTPATIENT

**7949 7949 SPECIALIZED FC VAN NUYS
7555 VAN NUYS BLVD ., 4TH FLOOR
VAN NUYS, CA 91405-1949**

Phone: 818-904-8808

Hours of Operation: MON - FRI 8:00 AM - 5:00 PM

Accepting Beneficiaries: No

Accessible By: BY REFERRAL ONLY

Provider: DO

Supervisorial District: 3

Age Group Served: All Ages

Languages: English, Mandarin, Other Chinese, Spanish,

Cultures:

Programs/Services: MENTAL HEALTH SERVICES* (MHS), CRISIS INTERVENTION,
PSYCHOLOGICAL TESTING, TARGETED CASE MANAGEMENT
COMMUNITY OUTREACH SERVICES,

ADA Facility: No

Website: www.dmh.lacounty.gov

Email:

List of Practitioners

Not Available

Service Area 2

OUTPATIENT

**7952 7952 STAR VIEW BEHAVIORAL HEALTH INC.
7601 CANBY AVENUE STE 3
RESEDA, CA 91335-2979**

Phone: 310-868-5379

Hours of Operation: MON-FRI 8.30 AM TO 5:00 PM

Accepting Beneficiaries: Yes

Accessible By: BY REFERRAL ONLY

Provider: NGA

Supervisorial District: 3

Age Group Served: All Ages

Languages: English, Spanish,

Cultures:

Programs/Services: MEDICATION SUPPORT, MENTAL HEALTH SERVICES* (MHS),
PSYCHOLOGICAL TESTING, TARGETED CASE MANAGEMENT

ADA Facility: Yes

Website: www.starsinc.com

Email:

List of Practitioners

Not Available

Service Area 2

OUTPATIENT

**7964 7964 OLIVE CREST
805 TO 807 N CENTRAL AVE
GLENDALE, CA 91203-1230**

Phone: 818-630-7480

Hours of Operation: MON - FRI 8:30 AM - 5:00 PM

Accepting Beneficiaries: No

Accessible By: CONTACT PROVIDER

Provider: NGA

Supervisory District: 5

Age Group Served: 0-20

Languages: English, Spanish,

Cultures:

Programs/Services: TARGETED CASE MANAGEMENT, MENTAL HEALTH SERVICES* (MHS), MEDICATION SUPPORT, CRISIS INTERVENTION

ADA Facility: Yes

Website: www.olivecrest.org

Email:

List of Practitioners

Not Available

Service Area 2

OUTPATIENT

**7966 7966 CA MENTOR
10200 SEPULVEDA BLVD
MISSION HILLS, CA 91345-2649**

Phone: 818-895-9707

Hours of Operation: MON-FRI 9:00 AM TO 5:00 PM

Accepting Beneficiaries: Yes

Accessible By: BY REFERRAL ONLY

Provider: NGA

Supervisorial District: 3

Age Group Served: All Ages

Languages: English, Spanish,

Cultures:

Programs/Services: TARGETED CASE MANAGEMENT, MENTAL HEALTH SERVICES* (MHS), MEDICATION SUPPORT, CRISIS INTERVENTION

ADA Facility: Yes

Website: www.ca-mentor.com

Email: sabrina.ullah@thementornetwork.com

List of Practitioners

Not Available

Service Area 2

OUTPATIENT

7971 7971 OPCC AND LAMP COMMUNITY INC
8215 VAN NUYS BLVD
PANORAMA CITY, CA 91402-4827

Phone: 818-855-2270

Hours of Operation: MON - FRI 8:00 AM - 5:00 PM

Accepting Beneficiaries: Yes

Accessible By: CONTACT PROVIDER

Provider: NGA

Supervisory District: 3

Age Group Served: All Ages

Languages: English, Spanish,

Cultures:

Programs/Services: TARGETED CASE MANAGEMENT, MENTAL HEALTH SERVICES* (MHS), MEDICATION SUPPORT, CRISIS INTERVENTION

ADA Facility: Yes

Website: <https://www.movinglivesforward.org/>

Email:

List of Practitioners

Not Available

Service Area 2

OUTPATIENT

**7973 7973 CHILD AND FAM GUIDANCE CTR CFC
19100 PARTHENIA STREET STE 1 2 3 4 6 7
NORTHRIDGE, CA 91324-3664**

Phone: 818-882-3147

Hours of Operation: MON - FRI 8:00 AM - 5:00 PM

Accepting Beneficiaries: Yes

Accessible By: CONTACT PROVIDER

Provider: NGA

Supervisorial District: 3

Age Group Served: All Ages

Languages: English, Spanish,

Cultures:

Programs/Services: PSYCHOLOGICAL TEST , MEDICATION SUPPORT. MENTAL HEALTH SERVICES* (MHS)

ADA Facility: Yes

Website: www.childguidance.org

Email:

List of Practitioners

Not Available

Service Area 2

OUTPATIENT

**7975 7975 EL CENTRO DE AMISTAD TOPANGA
8399 TOPANGA CANYON BLVD
CANOGA PARK, CA 91304-2354**

Phone: 818-593-4246

Hours of Operation: MON-FRI 8:30AM-5:00PM AND THURSDAY 8:30AM-7:30PM

Accepting Beneficiaries: Yes

Accessible By: CONTACT PROVIDER

Provider: NGA

Supervisorial District: 3

Age Group Served: All Ages

Languages: English, Spanish,

Cultures:

Programs/Services: MEDICATION SUPPORT, MENTAL HEALTH SERVICES*(MHS),
CRISIS INTERVENTION, TARGETED CASE MANAGEMENT

ADA Facility: Yes

Website: www.elcentrodeamistad.com

Email:

List of Practitioners

Not Available

Service Area 2

OUTPATIENT

7980 7980 CHILD AND FAM GUIDANCE CTR NHW
9119 HASKELL AVE
NORTH HILLS, CA 91343-3121

Phone: 818-739-5900

Hours of Operation: MON - FRI 8:00 AM - 5:00 PM

Accepting Beneficiaries: Yes

Accessible By: CONTACT PROVIDER

Provider: NGA

Supervisorial District: 3

Age Group Served: All Ages

Languages: English, Spanish,

Cultures:

Programs/Services: PSYCHOLOCAL TESTING, MEDICATION SUPPORT, MENTAL HEALTH SERVICES* (MHS), TARGETED CASE MANAGEMENT, CRISIS INTERVENTION

ADA Facility: Yes

Website: www.childguidance.org

Email:

List of Practitioners

Not Available

Attestation

Provider Number	Provider Name	Attestation Received - YES	Attestation Received - NO
0054	HARBOR VIEW CENTER		NO
0055	LANDMARK MEDICAL CENTER		NO
0057	LA PAZ		NO
0058	LAUREL PARK		NO
0059	MEADOWBROOK MANOR		NO
0061	OLIVE VISTA		NO
0063	SAN GABRIEL VALLEY CONVALESCENT HOSPITAL		NO
0067	VIEW HEIGHTS CONVALESCENT HOSPITAL		NO
0080	COMMUNITY CARE CENTER		NO
1904	ANTELOPE VALLEY MHC		NO
1905	SANTA CLARITA VALLEY MENTAL HEALTH CENTER		NO
1906	EDMUND D EDELMAN MENTAL HEALTH CENTER-ADULT		NO
1907	GATEWAYS HOMELESS SERVICES		NO
1908	WEST CENTRAL FAMILY MENTAL HEALTH SERVICES		NO
1909	HOLLYWOOD MENTAL HEALTH CENTER		NO
190A	PENNY LANE CENTERS, SATELLITE VII		NO
190B	PENNY LANE CENTERS, SATELLITE IV		NO
190C	EXODUS IMHT		NO
190D	PENNY LANE CENTERS, SATELLITE IX		NO
190E	PENNY LANE CENTERS, SATELLITE X		NO
190F	PENNY LANE CENTERS, SATELLITE III		NO
190G	PENNY LANE CENTERS, SATELLITE VI		NO
190H	PENNY LANE CENTERS, SATELLITE III		NO
1910	PASADENA UNIFIED SCHOOL DISTRICT		NO
1912	BELL GARDENS YOUTH AND FAMILY SERVICES		NO

Nov 12, 2020

146

For first time visit and/or new referrals, please contact provider. To obtain Mental Health Information and Services confidentially, please call the 24/7 ACCESS Center Hotline at 1-800-854-7771. (For TDD-TTY, call 1-866-735-2922.) To schedule interpreter services for the hearing impaired (American Sign Language-ASL), please call the 24/7 ACCESS Center Hotline. *MHS refers to individual/group therapy and collateral services. Provider: DMH = Directly-Operated Facility; NGA = Non-Governmental Agency (Contractor); FFS = Fee-for-Service.

Attestation

Provider Number	Provider Name	Attestation Received - YES	Attestation Received - NO
1913	HEOPLINE YOUTH COUNSELING, INC		NO
1914	NORTHEAST MENTAL HEALTH CENTER		NO
1916	TARZANA TREATMENT CENTER		NO
1917	ARCADIA MENTAL HEALTH CENTER		NO
1918	THE HELP GROUP, CHILD AND FAMILYCENTER		NO
1921	WHITTIER WMET		NO
1926	LONG BEACH CHILD & ADOLESCENT CLINIC		NO
1927	LONG BEACH MENTAL HEALTH SERVICES (MHS) ADULT CLINIC		NO
1928	SAN PEDRO MENTAL HEALTH CLINIC (MHC)		NO
1930	RIO HONDO COMMUNITY MENTAL HEALTH CENTER	YES	
1932	WSGVMET		NO
1933	OPTIMIST EAGLE ROCK		NO
1934	OPTIMIST CARSON		NO
1935	SOUTH BAY MENTAL HEALTH SERVICES (MHS)		NO
1936	OPTIMIST MISSION HILLS		NO
1937	PACIFIC LODGE YOUTH SERVICES		NO
1938	COMPTON MENTAL HEALTH CENTER		NO
1941	PACIFIC LODGE CAMPUS		NO
1942	SGMET		NO
1943	ROSEMARY CHILDREN'S SERVICES		NO
1944	LAWMET		NO
1945	IMET		NO
1946	OPTIMIST CAMPUS		NO
1947	HRMBMET		NO
1948	OPTIMIST VAN NUYS		NO

Nov 12, 2020

147

For first time visit and/or new referrals, please contact provider. To obtain Mental Health Information and Services confidentially, please call the 24/7 ACCESS Center Hotline at 1-800-854-7771. (For TDD-TTY, call 1-866-735-2922.) To schedule interpreter services for the hearing impaired (American Sign Language-ASL), please call the 24/7 ACCESS Center Hotline. *MHS refers to individual/group therapy and collateral services. Provider: DMH = Directly-Operated Facility; NGA = Non-Governmental Agency (Contractor); FFS = Fee-for-Service.

Attestation

Provider Number	Provider Name	Attestation Received - YES	Attestation Received - NO
1949	OPTIMIST SYLMAR JH		NO
1953	LAC-OLIVE VIEW/UCLA MEDICAL CENTER		NO
1953	LAC-OLIVE VIEW-EMERGENCY ROOM		NO
1954	HILLVIEW MH AUXILIARY OUTPATIENT, SITE 2		NO
1955	HILLSIDES BOYS SATELLITE HOME		NO
1956	LAC + USC MEDICAL CENTER		NO
1956	LAC + USC MEDICAL CENTER - CRISIS STABILIZATION		NO
1956	LAC + USC MEDICAL CENTER - PSYCH OUTPATIENT		NO
1957	CENTRAL JUVENILE HALL		NO
1958	DOROTHY KIRBY		NO
1959	HILLSIDES GIRLS SATELLITE HOME		NO
1960	HILLSIDES STRTP		NO
1961	STAR VIEW ADOLESCENT CENTER, PSYCHIATRIC HEALTH FACILITY		NO
1962	LAC HARBOR UCLA MEDICAL CENTER, CRISIS STABLIZATION		NO
1962	LAC HARBOR-UCLA MEDICAL CENTER		NO
1964	BIENVENIDOS CHILDREN'S CENTER		NO
1965	PENNY LANE CENTER, MAIN FACILITY		NO
1967	BIENVENIDOS MONTEBELLO		NO
1969	SOUTH BAY CHILDREN'S HEALTH CENTER		NO
1972	THE WHOLE CHILD		NO
1973	DIDI HIRSCH-SEPULVEDA		NO
1974	PACIFIC CLINICS PASADENA FAMILY SERVICES		NO
1975	CHILD & FAMILY GUIDANCE CENTER-NORTHRIDGE		NO
1977	COMMUNITY FAMILY GUIDANCE CENTER		NO

Nov 12, 2020

148

For first time visit and/or new referrals, please contact provider. To obtain Mental Health Information and Services confidentially, please call the 24/7 ACCESS Center Hotline at 1-800-854-7771. (For TDD-TTY, call 1-866-735-2922.) To schedule interpreter services for the hearing impaired (American Sign Language-ASL), please call the 24/7 ACCESS Center Hotline. *MHS refers to individual/group therapy and collateral services. Provider: DMH = Directly-Operated Facility; NGA = Non-Governmental Agency (Contractor); FFS = Fee-for-Service.

Attestation

Provider Number	Provider Name	Attestation Received - YES	Attestation Received - NO
1979	PACIFIC CLINICS-E FOOTHILL GUIDANCE		NO
1982	GATEWAYS CMHC		NO
1990	BIENVENIDOS CHILDRENS CENTER		NO
1991	BIENVENIDOS VILLAGE		NO
1992	PENNY LANE CENTER, SATELLITE V		NO
1996	PENNY LANE CENTER, SATELLITE I		NO
1997	VISTA DEL MAR CHILD AND FAMILY STRTP		NO
1998	PENNY LANE CENTER, SATELLITE VIII		NO
6757	GATEWAYS COMMUNITY MHC MDO		NO
6758	HILLVIEW MHC ADULT RESIDENTIAL		NO
6773	PROVIDENCE - ST. JOHN'S CHILD & FAMILY DEVELOPMENT CENTER		NO
6792	PROVIDENCE SAINT JOHN'S HEALTH CENTER		NO
6821	BARRY J. NIDORF, JUVENILE HALL, MH UNIT		NO
6821	OPTIMIST AT BARRY J. NIDORF (SATELLITE)		NO
6840	SAN FERNANDO MENTAL HEALTH CENTER		NO
6841	WEST VALLEY MENTAL HEALTH WELLNESS CENTER		NO
6853	SAN FERNANDO VALLEY CMHC-YOUTH & FAMILY CTR.		NO
6857	ROYBAL FAMILY MENTAL HEALTH CENTER		NO
6859	HARBOR-UCLA MEDICAL CENTER		NO
6863	PENNY LANE CENTERS		NO
6864	AUGUSTUS F. HAWKINS MENTAL HEALTH CENTER		NO
6864	AUGUSTUS F. HAWKINS MENTAL HEALTH CENTER, FIRST 5 PCIT (SATELLITE)		NO
6864	AUGUSTUS F. HAWKINS MENTAL HEALTH CENTER, HAVEN CLINIC (SATELLITE)		NO

Nov 12, 2020

149

For first time visit and/or new referrals, please contact provider. To obtain Mental Health Information and Services confidentially, please call the 24/7 ACCESS Center Hotline at 1-800-854-7771. (For TDD-TTY, call 1-866-735-2922.) To schedule interpreter services for the hearing impaired (American Sign Language-ASL), please call the 24/7 ACCESS Center Hotline. *MHS refers to individual/group therapy and collateral services. Provider: DMH = Directly-Operated Facility; NGA = Non-Governmental Agency (Contractor); FFS = Fee-for-Service.

Attestation

Provider Number	Provider Name	Attestation Received - YES	Attestation Received - NO
6864	AUGUSTUS F. HAWKINS MENTAL HEALTH CENTER, WOMAN'S CLINIC (SATELLITE)		NO
6870	LOS ANGELES CHILD GUIDANCE CLINIC	YES	
7012	OFFICE OF THE PUBLIC GUARDIAN		NO
7018	MENTAL HEALTH AMERICA		NO
7019	ALMA FAMILY SERVICES		NO
7019	ALMA FAMILY SERVICES-LONG BEACH		NO
7020	GARDENA SOCIAL ACTIVITY CENTER		NO
7031	WATTS LABOR COMMUNITY ACTION (SATELLITE)		NO
7046	DIDI HIRSCH EXCELSIOR HOUSE		NO
7050	EL CENTRO DE AMISTAD		NO
7057	DOWNTOWN MENTAL HEALTH CENTER		NO
7061	AIDS PROJECT LOS ANGELES		NO
7062	WESTSIDE CENTER FOR INDEPENDENT LIVING (WCIL) INC.		NO
7064	COASTAL ASIAN PACIFIC ISLANDER FAMILY MENTAL HEALTH CENTER		NO
7065	MENTAL HEALTH AMERICA OF LA HOMELESS ASSISTANCE		NO
7068	HILLVIEW MHC, INC.		NO
7072	MENTAL HEALTH COURT LINKAGE PROGRAM		NO
7075	BRIDGES INC. - HACIENDA RETIRADA INC.		NO
7080	KEDREN ACUTE PSYCHIATRIC HOSPITAL & CMHC		NO
7092	HEALTH VIEW BEHAVIORAL SERVICES CENTER		NO
7095	THE HELP GROUP CHILD & FAMILY CENTER		NO
7099	STEP UP ON SECOND STREET-ADULT FCCS-TAY FSP		NO
7100	SAN FERNANDO VALLEY CMHC-CENTER FOR FAMILY		NO

Nov 12, 2020

150

For first time visit and/or new referrals, please contact provider. To obtain Mental Health Information and Services confidentially, please call the 24/7 ACCESS Center Hotline at 1-800-854-7771. (For TDD-TTY, call 1-866-735-2922.) To schedule interpreter services for the hearing impaired (American Sign Language-ASL), please call the 24/7 ACCESS Center Hotline. *MHS refers to individual/group therapy and collateral services. Provider: DMH = Directly-Operated Facility; NGA = Non-Governmental Agency (Contractor); FFS = Fee-for-Service.

Attestation

Provider Number	Provider Name	Attestation Received - YES	Attestation Received - NO
	LIVING		
7101	PACIFIC CLINICS - ASIAN PACIFIC FAMILY CENTER		NO
7103	KOREATOWN YOUTH & COMMUNITY CENTER INC.		NO
7104	AMANECER COMMUNITY COUNSELING SERVICE (SATELLITE)		NO
7104	AMANECER COMMUNITY COUNSELING SERVICES		NO
7106	THE LOS ANGELES GAY & LESBIAN CENTER		NO
7110	DIDI HIRSCH JUMP STREET		NO
7111	1736 FAMILY CRISIS CENTER		NO
7112	SPECIAL SERVICES FOR GROUPS (SSG)		NO
7114	ST. JOSEPH'S CENTER-VENICE/HAMPTON		NO
7121	FOR THE CHILD		NO
7124	SPECIAL SERVICES FOR GROUPS (SSG)		NO
7131	SOCIAL MODEL RECOVERY SYSTEMS - THE RIVER COMMUNITY		NO
7134	LAMP COMMUNITY FRANK RICE ACCESS CENTER		NO
7147	FILIPINO-AMERICAN SERVICE GROUP, INC.		NO
7166	LOS PADRINOS JUVENILE HALL MENTAL HEALTH UNIT		NO
7169	PROVIDENCE SAINT JOHN'S HEALTH CENTER		NO
7173	ENKI LPV MENTAL HEALTH CENTER-LA PUENTE		NO
7174	SAN FERNANDO VALLEY CMHC-CORNERSTONE		NO
7177	SAN FERNANDO VALLEY CMHC-MACDONALD CAREY CENTER		NO
7178	OCEAN PARK-OPCC-DAY BREAK SHELTER, SAFE HAVEN		NO
7184	THE INSTITUTE FOR THE REDESIGN OF LEARNING - ALMANSOR		NO

Nov 12, 2020

151

For first time visit and/or new referrals, please contact provider. To obtain Mental Health Information and Services confidentially, please call the 24/7 ACCESS Center Hotline at 1-800-854-7771. (For TDD-TTY, call 1-866-735-2922.) To schedule interpreter services for the hearing impaired (American Sign Language-ASL), please call the 24/7 ACCESS Center Hotline. *MHS refers to individual/group therapy and collateral services. Provider: DMH = Directly-Operated Facility; NGA = Non-Governmental Agency (Contractor); FFS = Fee-for-Service.

Attestation

Provider Number	Provider Name	Attestation Received - YES	Attestation Received - NO
7186	SSG - ASIAN PACIFIC COUNSELING & TREATMENT CENTER		NO
7187	SSG-METRO COUNSELING CENTER		NO
7191	EDMUND D EDELMAN MENTAL HEALTH CENTER-CHILD AND FAMILY		NO
7194	PACIFIC CLINICS-EL CAMINO MENTAL HEALTH CENTER		NO
7195	CAMP AFFLERBAUGH		NO
7195	CAMP GLEN ROCKEY		NO
7195	CAMP JOSEPH PAIGE		NO
7195	CHALLENGER MENTAL HEALTH UNIT		NO
7196	VISTA DEL MAR CHILD & FAMILY SERVICE		NO
7203	THE SABAN FREE CLINIC		NO
7204	MHA ANTELOPE VALLEY		NO
7207	LONG BEACH ASIAN PACIFIC MENTAL HEALTH PROGRAM		NO
7209	DIDI HIRSCH-INGLEWOOD		NO
7211	LAUSD 97TH STREET SCHOOL MENTAL HEALTH CENTER		NO
7212	MHA VILLAGE INTEGRATED SERVICE		NO
7213	RESIDENTIAL AND BRIDGING SERVICES		NO
7216	SYSTEMWIDE MENTAL ASSESSMENT RESPONSE TEAM (SMART)		NO
7217	METMOBILE CRISIS FIELD UNIT		NO
7218	BARBOUR & FLOYD MEDICAL ASSOCIATES		NO
7220	SOUTH BAY CHILDREN'S HEALTH CENTER		NO
7221	AVIVA FAMILY AND CHILDREN'S SERVICES		NO
7224	PACIFIC CLINICS-ACT-WEST COVINA		NO

Nov 12, 2020

152

For first time visit and/or new referrals, please contact provider. To obtain Mental Health Information and Services confidentially, please call the 24/7 ACCESS Center Hotline at 1-800-854-7771. (For TDD-TTY, call 1-866-735-2922.) To schedule interpreter services for the hearing impaired (American Sign Language-ASL), please call the 24/7 ACCESS Center Hotline. *MHS refers to individual/group therapy and collateral services. Provider: DMH = Directly-Operated Facility; NGA = Non-Governmental Agency (Contractor); FFS = Fee-for-Service.

Attestation

Provider Number	Provider Name	Attestation Received - YES	Attestation Received - NO
7225	CHILD AND FAM GUIDANCE CENTER-PALMDALE		NO
7227	PACIFIC CLINICS-EAST-YOUTH DAY TREATMENT		NO
7229	ALCOTT CENTER FOR MENTAL HEALTH SERVICES	YES	
7231	HILLSIDES FAMILY RESOURCE CENTER		NO
7235	SAN FERNANDO VALLEY CMHC-VICTORY CLUB HOUSE		NO
7241	COUNTYWIDE OLDER ADULT GENESIS FCCS		NO
7242	SCHARP - OASIS HOUSE WELLNESS CENTER		NO
7243	BRIDGES INC.		NO
7244	BRIDGES INC.		NO
7245	HOMES FOR LIFE FOUNDATION		NO
7246	COMMUNITY FAMILY GUIDANCE CENTER, FAMILY AND YOUTH STARS PROGRAM		NO
7247	CHILD & FAMILY GUIDANCE CENTER-BALBOA		NO
7248	EXODUS RECOVERY INC.		NO
7249	THE GUIDANCE CENTER-SAN PEDRO		NO
7250	TELECARE LOS ANGELES ACT OLDER ADULTS		NO
7251	PACIFIC CLINICS		NO
7252	SAN FERNANDO VALLEY CMHC-ADULT FCCS		NO
7253	ENKI EAST LOS ANGELES MHS-COMMERCE		NO
7254	ENKI EAST LOS ANGELES MHS-BELL GARDENS		NO
7255	ENKI - PICO UNION		NO
7257	STAR VIEW ADOLESCENT CENTER		NO
7259	LONG BEACH MET		NO
7262	TELECARE LA-AB34 OUTPATIENT		NO
7264	SHIELDS FOR FAMILIES		NO
7265	LOS ANGELES CHILD GUIDANCE CLINIC - FAMILIES IN	YES	

Nov 12, 2020

153

For first time visit and/or new referrals, please contact provider. To obtain Mental Health Information and Services confidentially, please call the 24/7 ACCESS Center Hotline at 1-800-854-7771. (For TDD-TTY, call 1-866-735-2922.) To schedule interpreter services for the hearing impaired (American Sign Language-ASL), please call the 24/7 ACCESS Center Hotline. *MHS refers to individual/group therapy and collateral services. Provider: DMH = Directly-Operated Facility; NGA = Non-Governmental Agency (Contractor); FFS = Fee-for-Service.

Attestation

Provider Number	Provider Name	Attestation Received - YES	Attestation Received - NO
	TOUCH		
7268	AVIVA FAMILY AND CHILDREN'S SERVICES		NO
7269	OLIVE CREST TREATMENT CENTERS-WRAPAROUND		NO
7270	HARBOR VIEW COMMUNITY SERVICES CENTER		NO
7272	PACIFIC ASIAN COUNSELING SERVICES		NO
7275	CHILDREN'S INSTITUTE INC.		NO
7276	LOS ANGELES CHILD GUIDANCE CLINIC	YES	
7277	LA CASA PSYCHIATRIC HEALTH FACILITY		NO
7278	HATHAWAY SYCAMORES CHILD AND FAMILY SERVICES		NO
7279	THE GUIDANCE CENTER, COMPTON		NO
7283	TOPANGA WEST GUEST HOME		NO
7284	PACIFIC CLINICS-ACT-EL MONTE		NO
7286	FIVE ACRES		NO
7299	COLLEGE HOSPITAL		NO
7300	CHILDREN'S BUREAU OF SOUTHERN CALIFORNIA		NO
7301	CHILD BUREAU OF SOUTHERN CA-PALMDALE		NO
7302	CHILDREN'S BUREAU OF S CALIFORNIA-SG VALLEY		NO
7303	SCHARP COMPTON		NO
7312	INST. FOR MULTICULTURAL COUNSELING & EDUCATION SERVICES		NO
7320	SAN FERNANDO VALLEY CMHC-TRANSITIONAL YOUTH		NO
7322	SAN FERNANDO VALLEY CMHC-HOMEBOUND		NO
7328	CHILDREN'S INSTITUTE INC.		NO
7329	SSG - OTTP		NO
7330	FOOTHILL FAMILY SERVICES-PASADENA	YES	
7331	FOOTHILL FAMILY SERVICES-WEST COVINA	YES	

Nov 12, 2020

154

For first time visit and/or new referrals, please contact provider. To obtain Mental Health Information and Services confidentially, please call the 24/7 ACCESS Center Hotline at 1-800-854-7771. (For TDD-TTY, call 1-866-735-2922.) To schedule interpreter services for the hearing impaired (American Sign Language-ASL), please call the 24/7 ACCESS Center Hotline. *MHS refers to individual/group therapy and collateral services. Provider: DMH = Directly-Operated Facility; NGA = Non-Governmental Agency (Contractor); FFS = Fee-for-Service.

Attestation

Provider Number	Provider Name	Attestation Received - YES	Attestation Received - NO
7332	HILLSIDES OUTPATIENT		NO
7334	DIDI HIRSCH-MAR VISTA		NO
7335	STAR VIEW COMMUNITY SERVICES		NO
7337	FIVE ACRES		NO
7340	VALLEY COORDINATED CHILDREN'S SERVICES		NO
7341	D'VEAL FAMILY & YOUTH SERVICES		NO
7342	MASADA HOMES		NO
7344	OPTIMIST BOYS HOME AND RANCH, INC. (SATELLITE)		NO
7344	OPTIMIST BOYS HOME AND RANCH, INC. (SATELLITE) BARRY J. NIDORF JUVENILE HALL		NO
7344	OPTIMIST YOUTH HOMES		NO
7344	OPTIMIST YOUTH HOMES (SATELLITE)		NO
7348	1736 FAMILY CRISIS CENTER		NO
7352	PALMDALE DISCOVERY CENTER		NO
7353	PACIFIC CLINICS-ARROYO FSP		NO
7354	SAN FERNANDO VALLEY CMHC-YOUTH & FAMILY CENTER		NO
7355	SAN FERNANDO VALLEY CMHC-YOUTH CONTACT FCCS		NO
7356	PHOENIX HOUSE OF L.A. INC.		NO
7357	DIDI HIRSCH-CULVER PALMS		NO
7358	SAN FERNANDO VALLEY CMHC-AB34		NO
7359	DIDI HIRSCH-METRO CENTER		NO
7360	ENKI-MARGARITA MENDEZ YOUTH AND FAMILY SERVICES		NO
7362	ASIAN PACIFIC-SFV		NO
7365	SHIELDS FOR FAMILIES		NO

Nov 12, 2020

155

For first time visit and/or new referrals, please contact provider. To obtain Mental Health Information and Services confidentially, please call the 24/7 ACCESS Center Hotline at 1-800-854-7771. (For TDD-TTY, call 1-866-735-2922.) To schedule interpreter services for the hearing impaired (American Sign Language-ASL), please call the 24/7 ACCESS Center Hotline. *MHS refers to individual/group therapy and collateral services. Provider: DMH = Directly-Operated Facility; NGA = Non-Governmental Agency (Contractor); FFS = Fee-for-Service.

Attestation

Provider Number	Provider Name	Attestation Received - YES	Attestation Received - NO
7367	STAR VIEW COMMUNITY SERVICES		NO
7368	THE INSTITUTE FOR REDESIGN AND LEARNING - ALMANSOR		NO
7369	SAN FERNANDO VALLEY CMHC-FAMILY LINKS		NO
7371	EL CENTRO AMISTAD-SAN FERNANDO		NO
7374	ROSEMARY CHILDREN'S SERVICES		NO
7377	GAY AND LESBIAN PEER COUNSELING		NO
7378	PACIFIC ASIAN COUNSELING SERVICES SFV		NO
7379	EMERGENCY OUTREACH BUREAU/CRISIS HOMELESS-METRO		NO
7379	SA 4, EMERGENCY OUTREACH/CRISIS HOMELESS		NO
7380	PACIFIC CLINICS - SIERRA FAMILY CENTER		NO
7381	BIENVENIDOS MONTEBELLO OP		NO
7385	EXODUS RECOVERY INC.		NO
7386	PALMDALE MENTAL HEALTH CENTER		NO
7390	CHILD & FAMILY GUIDANCE CENTER		NO
7394	THE HELP GROUP-WEST OUTPATIENT		NO
7396	SCHARP CHILD DAY TREATMENT		NO
7400	SSG - PROJECT 180		NO
7401	PACIFIC CLINICS ON LAKE		NO
7406	TELECARE HOP 7		NO
7407	FOOTHILL FAMILY SERVICES-HUDSON	YES	
7409	SCHARP ADULT SERVICES		NO
7413	CHILD & FAMILY CENTER		NO
7414	UNITED AMERICAN INDIAN INVOLVEMENT		NO
7418	PACIFIC CLINICS		NO

Nov 12, 2020

156

For first time visit and/or new referrals, please contact provider. To obtain Mental Health Information and Services confidentially, please call the 24/7 ACCESS Center Hotline at 1-800-854-7771. (For TDD-TTY, call 1-866-735-2922.) To schedule interpreter services for the hearing impaired (American Sign Language-ASL), please call the 24/7 ACCESS Center Hotline. *MHS refers to individual/group therapy and collateral services. Provider: DMH = Directly-Operated Facility; NGA = Non-Governmental Agency (Contractor); FFS = Fee-for-Service.

Attestation

Provider Number	Provider Name	Attestation Received - YES	Attestation Received - NO
7420	HILLVIEW MHC AB 109		NO
7421	AMERICAN INDIAN COUNSELING CENTER	YES	
7423	DIDI HIRSCH TAPER CENTER		NO
7426	PACIFIC ASIAN COUNSELING SERVICES		NO
7429	FAMILY SERVICES OF SANTA MONICA-VISTA DEL MAR		NO
7430	HERITAGE CLINIC PASADENA	YES	
7432	MASADA HOMES		NO
7433	THE GUIDANCE CENTER		NO
7436	MCKINLEY CHILDREN'S CENTER		NO
7439	PACIFIC CLINICS - CHILDRENS INTENSIVE COMMUNITY SERVICES		NO
7440	D'VEAL FAMILY & YOUTH SERVICES		NO
7441	PACIFIC CLINICS-CHILD & FAMILY - FIELD BASED INTENSIVE CARE		NO
7442	SPECIALIZED FOSTER CARE-PASADENA	YES	
7443	SPECIALIZED FOSTER CARE-METRO NORTH		NO
7444	OPTIMIST YOUTH & FAMILY SERVICES		NO
7445	SAN FERNANDO VALLEY CMHC-CSOC		NO
7446	UCLA TIES FOR ADOPTION		NO
7449	CHILDREN'S HOSPITAL LA-COVENANT		NO
7451	SFVCMHC WRAPAROUND		NO
7452	ENKI YOUTH FAMILY SERVICES-EL MONTE		NO
7453	ETTIE LEE HOMES-POMONA		NO
7455	PENNY LANE CENTERS		NO
7458	JUVENILE COURT MENTAL HEALTH SERVICES		NO
7461	HOMELESS OUTREACH PSYCHIATRIC EVALUATION		NO

Nov 12, 2020

157

For first time visit and/or new referrals, please contact provider. To obtain Mental Health Information and Services confidentially, please call the 24/7 ACCESS Center Hotline at 1-800-854-7771. (For TDD-TTY, call 1-866-735-2922.) To schedule interpreter services for the hearing impaired (American Sign Language-ASL), please call the 24/7 ACCESS Center Hotline. *MHS refers to individual/group therapy and collateral services. Provider: DMH = Directly-Operated Facility; NGA = Non-Governmental Agency (Contractor); FFS = Fee-for-Service.

Attestation

Provider Number	Provider Name	Attestation Received - YES	Attestation Received - NO
	(HOPE)		
7463	FOOTHILL FAMILY SERVICES-EL MONTE	YES	
7465	SHIELDS FOR FAMILIES		NO
7468	SAN ANTONIO MENTAL HEALTH CENTER	YES	
7469	CHILDNET YOUTH & FAMILY SERVICES		NO
7470	GATEWAYS NORMANDIE VILLAGE EAST OP CLINIC		NO
7471	COMMUNITY FAMILY GUIDANCE CENTER		NO
7472	ENKI BOYLE HEIGHTS		NO
7473	CHILD BUREAU OF SOUTHERN CA-LANCASTER DT		NO
7474	MARYVALE		NO
7475	EMERGENCY OUTREACH BUREAU/CRISIS HOMELESS - EDELMAN		NO
7476	SA 6, EMERGENCY OUTREACH BUREAU/CRISIS HOMELESS		NO
7477	EMERGENCY OUTREACH BUREAU/CRISIS HOMELESS - SAN FERNANDO		NO
7478	EMERGENCY OUTREACH BUREAU/CRISIS HOMELESS - AV		NO
7479	CHILD AND FAMILY CENTER		NO
7479	CHILD AND FAMILY CENTER. CAMP MUNOZ/MENDENHALL (SATELLITE)	YES	
7480	VIP COMMUNITY MENTAL HEALTH CENTER		NO
7481	STIRLING BEHAVIORAL HEALTH INSTITUTE		NO
7482	MENTAL HEALTH URGENT CARE CENTER @ LONG BEACH		NO
7483	COUNSELING4KIDS		NO
7488	CHILDREN'S CENTER OF ANTELOPE VALLEY		NO

Nov 12, 2020

158

For first time visit and/or new referrals, please contact provider. To obtain Mental Health Information and Services confidentially, please call the 24/7 ACCESS Center Hotline at 1-800-854-7771. (For TDD-TTY, call 1-866-735-2922.) To schedule interpreter services for the hearing impaired (American Sign Language-ASL), please call the 24/7 ACCESS Center Hotline. *MHS refers to individual/group therapy and collateral services. Provider: DMH = Directly-Operated Facility; NGA = Non-Governmental Agency (Contractor); FFS = Fee-for-Service.

Attestation

Provider Number	Provider Name	Attestation Received - YES	Attestation Received - NO
7490	THE HELP GROUP-PROJECT SIX		NO
7493	THE STAR VIEW COMMUNITY SERVICES		NO
7494	HAMBURGER HOME - AVIVA FAMILY AND CHILDREN'S SERVICES		NO
7495	PACIFIC CLINICS-LATINA PROGRAM		NO
7502	PACIFIC CLINICS-HYE WRAP PROGRAM		NO
7503	CENTRAL JUVENILE HALL - STAR VIEW ADOLESCENT CENTER INC.		NO
7503	STAR VIEW ADOLESCENT CENTER INC.		NO
7504	HOMES FOR LIFE FOUNDATION		NO
7506	HOMES FOR LIFE FOUNDATION		NO
7509	SPECIALIZED FOSTER CARE-TORRANCE		NO
7510	SSG-HOPICS BEHAVIORAL HEALTH SERVICES		NO
7511	PENNY LANE: COMMERCE		NO
7515	NEW DIRECTIONS INCORPORATED		NO
7516	COUNSELING 4 KIDS-TORRANCE		NO
7517	SSG - ASIAN PACIFIC COUNSELING & TREATMENT CENTER		NO
7519	CA HISPANIC COMMISSION ALCOHOL & DRUG ABUSE		NO
7520	LINCOLN HEIGHTS FAMILY RECOVERY CENTER		NO
7521	BHS HOLLYWOOD RECOVERY CENTER		NO
7522	TARZANA TREATMENT CENTER INC.		NO
7525	STEP UP ON SECOND STREET-DANIEL'S PLACE		NO
7526	STEP UP ON SECOND STREET-ADULT FCCS-TAY FSP		NO
7527	SPIRIT FAMILY SERVICES KEYS		NO
7528	ASIAN AMERICAN DRUG ABUSE PROGRAM (AADAP)		NO

Nov 12, 2020

159

For first time visit and/or new referrals, please contact provider. To obtain Mental Health Information and Services confidentially, please call the 24/7 ACCESS Center Hotline at 1-800-854-7771. (For TDD-TTY, call 1-866-735-2922.) To schedule interpreter services for the hearing impaired (American Sign Language-ASL), please call the 24/7 ACCESS Center Hotline. *MHS refers to individual/group therapy and collateral services. Provider: DMH = Directly-Operated Facility; NGA = Non-Governmental Agency (Contractor); FFS = Fee-for-Service.

Attestation

Provider Number	Provider Name	Attestation Received - YES	Attestation Received - NO
7530	TOBINWORLD	YES	
7534	OLIVE CREST		NO
7534	OLIVE CREST TREATMENT CENTERS-WRAPAROUND		NO
7535	DREW CHILD DEVELOPMENT CORPORATION		NO
7536	SHIELDS FOR FAMILIES-SCHOOL BASED		NO
7538	ST. ANNE'S		NO
7539	ALAFIA MENTAL HEALTH INSTITUTE		NO
7540	ALAFIA MENTAL HEALTH INSTITUTE		NO
7541	OPTIMIST YOUTH HOMES-PALMDALE		NO
7542	PERSONAL INVOLVEMENT CENTER		NO
7543	LA CASA MHC		NO
7545	CENTER FOR INTEGRATED FAMILY AND HEALTH SERVICES		NO
7545	CENTER FOR INTEGRATED FAMILY AND HEALTH SERVICES - HOLLAND MIDDLE SCHOOL		NO
7545	CENTER FOR INTEGRATED FAMILY AND HEALTH SERVICES - JONES JR. HIGH SCHOOL		NO
7545	CENTER FOR INTEGRATED FAMILY AND HEALTH SERVICES - OLIVE MIDDLE SCHOOL		NO
7545	CENTER FOR INTEGRATED FAMILY AND HEALTH SERVICES -SIERRA VISTA JR. HIGH SCHOOL		NO
7546	PARA LOS NINOS		NO
7547	INST. FOR MULTICULTURAL COUNSELING AND EDUCATION SRVS., INC.		NO
7549	STEP OUT		NO
7552	TRINITY		NO
7555	SCHARP- ADULT OUTPATIENT SERVICES		NO

Nov 12, 2020

160

For first time visit and/or new referrals, please contact provider. To obtain Mental Health Information and Services confidentially, please call the 24/7 ACCESS Center Hotline at 1-800-854-7771. (For TDD-TTY, call 1-866-735-2922.) To schedule interpreter services for the hearing impaired (American Sign Language-ASL), please call the 24/7 ACCESS Center Hotline. *MHS refers to individual/group therapy and collateral services. Provider: DMH = Directly-Operated Facility; NGA = Non-Governmental Agency (Contractor); FFS = Fee-for-Service.

Attestation

Provider Number	Provider Name	Attestation Received - YES	Attestation Received - NO
7557	HATHAWAY SYCAMORES CHILD & FAMILY SERVICES		NO
7558	AFH - CRISIS RESOLUTION SERVICES		NO
7559	SPECIALIZED FOSTER CARE-SANTA CLARITA	YES	
7561	PACIFIC CLINICS-BONITA FAMILY SERVICE CENTER		NO
7562	ALMA FAMILY SERVICES		NO
7563	SAN GABRIEL CHILDREN'S CENTER		NO
7564	THE VILLAGE FAMILY SERVICES		NO
7567	PASADENA UNIFIED SCHOOL DISTRICT		NO
7570	CHILDREN'S BUREAU		NO
7572	LOS PADRONES JUVENILE HALL-PATHWAY COMMUNITY SERVICES		NO
7572	PROVIDENCE COMMUNITY SERVICES		NO
7573	SHIELDS FOR FAMILIES		NO
7574	HELPLINE YOUTH COUNSELING INC.		NO
7576	MENTAL HEALTH AMERICA OF LOS ANGELES WELLNES CENTER		NO
7577	KEDREN COMMUNITY MENTAL HEALTH CLINIC		NO
7579	ASIAN PACIFIC COUNSELING & TREATMENT CENTER		NO
7581	EL CENTRO DEL PUEBLO INC.	YES	
7584	ROYBAL SCHOOL BASED PROGRAM		NO
7586	CHILDREN'S HOSPITAL-LA QUEENSCARE HEALTH AND FAITH		NO
7588	EMERGENCY OUTREACH BUREAU/CRISIS HOMELESS-EAST		NO
7588	SA7, EMERGENCY OUTREACH BUREAU/CRISIS HOMELESS		NO
7589	ANNE SIPPI CLINIC COMMUNITY SERVICES		NO

Nov 12, 2020

161

For first time visit and/or new referrals, please contact provider. To obtain Mental Health Information and Services confidentially, please call the 24/7 ACCESS Center Hotline at 1-800-854-7771. (For TDD-TTY, call 1-866-735-2922.) To schedule interpreter services for the hearing impaired (American Sign Language-ASL), please call the 24/7 ACCESS Center Hotline. *MHS refers to individual/group therapy and collateral services. Provider: DMH = Directly-Operated Facility; NGA = Non-Governmental Agency (Contractor); FFS = Fee-for-Service.

Attestation

Provider Number	Provider Name	Attestation Received - YES	Attestation Received - NO
7589	ASC TREATMENT GROUP - ANNE SIPPI CLINIC		NO
7590	CALIFORNIA BEHAVIORAL HEALTH		NO
7591	LAC-OLIVE VIEW- MENTAL HEALTH CENTER		NO
7594	CEDAR STREET HOMES		NO
7595	BRIDGES INC.- PROJECT INDEPENDENCE		NO
7596	EMOTIONAL HEALTH ASSOCIATION-SHARE	YES	
7597	SFVCMHC TBS		NO
7599	HATHAWAY-SYCAMORES CHILD AND FAMILY SERVICES, FAIR OAKS PACE		NO
7600	HATHAWAY SYCAMORES CHILD FAMILY SERVICES		NO
7601	HATHAWAY-SYCAMORES CHILD AND FAMILY SERVICES, EN PACE		NO
7602	HATHAWAY-SYCAMORES CHILD AND FAMILY SERVICES		NO
7605	CRITTENTON SERVICES FOR CHILDREN & FAMILIES		NO
7607	SPECIALIZED FOSTER CARE-COMPTON	YES	
7608	SPECIALIZED FOSTER CARE-FIGUEROA		NO
7610	SPECIALIZED FOSTER CARE-PALMDALE	YES	
7611	SPECIALIZED FOSTER CARE-VERMONT		NO
7612	SPECIALIZED FOSTER CARE - WATERIDGE		NO
7614	CHILDREN'S HOSPITAL COMMUNITY MENTAL HEALTH CENTER		NO
7616	SPECIALIZED FOSTER CARE PROGRAM-COMMERCE		NO
7617	SPECIALIZED FOSTER CARE PROGRAM-SANTA FE SPRINGS		NO
7618	SOCIAL MODEL RECOVERY SYSTEMS - THE RIVER COMMUNITY		NO
7619	SPECIAL SERVICES FOR GROUPS API ALLIANCE		NO

Nov 12, 2020

162

For first time visit and/or new referrals, please contact provider. To obtain Mental Health Information and Services confidentially, please call the 24/7 ACCESS Center Hotline at 1-800-854-7771. (For TDD-TTY, call 1-866-735-2922.) To schedule interpreter services for the hearing impaired (American Sign Language-ASL), please call the 24/7 ACCESS Center Hotline. *MHS refers to individual/group therapy and collateral services. Provider: DMH = Directly-Operated Facility; NGA = Non-Governmental Agency (Contractor); FFS = Fee-for-Service.

Attestation

Provider Number	Provider Name	Attestation Received - YES	Attestation Received - NO
7620	SPECIALIZED FOSTER CARE-LANCASTER	YES	
7621	SA 3, EMERGENCY OUTREACH BUREAU/CRISIS HOMELESS - SG		NO
7622	SAN FERNANDO VALLEY CMHC-JUVENILE JUSTICE PROGRAM		NO
7622	SAN FERNANDO VALLEY COMMUNITY MENTAL HEALTH CENTER, INC., - PROBATION CAMP BARRY J. NIDORF JUVENILE HALL		NO
7624	THE HELP GROUP CHILD AND FAMILY CENTER		NO
7625	CHILDREN'S INSTITUTE INC.		NO
7626	AVIVA FAMILY AND CHILDREN'S SERVICES		NO
7636	ST. FRANCIS MEDICAL CENTER		NO
7637	ST. FRANCIS MEDICAL CENTER-CHILD COUNSELING CENTER		NO
7638	CHCADA		NO
7640	FIVE ACRES		NO
7641	TESSIE CLEVELAND COMMUNITY SERVICES		NO
7642	PASADENA COUNCIL ON ALCOHOL AND DRUG DEPENDENCE - SOCIAL MODEL RECOVERY		NO
7643	MHA TAY ACADEMY		NO
7645	HILLSIDES FRC, EP		NO
7646	EXODUS RECOVERY INC. OP		NO
7647	ADULT TELECARE LA SERVICES (ATLAS)		NO
7648	HERITAGE CLINIC FOR SENIORS		NO
7649	TARZANA TREATMENT CENTERS, INC.		NO
7650	TARZANA TREATMENT CENTER		NO
7651	SAN FERNANDO MHS FSP PROGRAM		NO

Nov 12, 2020

163

For first time visit and/or new referrals, please contact provider. To obtain Mental Health Information and Services confidentially, please call the 24/7 ACCESS Center Hotline at 1-800-854-7771. (For TDD-TTY, call 1-866-735-2922.) To schedule interpreter services for the hearing impaired (American Sign Language-ASL), please call the 24/7 ACCESS Center Hotline. *MHS refers to individual/group therapy and collateral services. Provider: DMH = Directly-Operated Facility; NGA = Non-Governmental Agency (Contractor); FFS = Fee-for-Service.

Attestation

Provider Number	Provider Name	Attestation Received - YES	Attestation Received - NO
7654	SCHARP - CHILD OUTPATIENT SERVICES		NO
7655	ALAFIA MENTAL HEALTH INSTITUTION		NO
7657	SSG-PACIFIC ASIAN COUNSELING SERVICES (PACS-LA)		NO
7659	CRITTENTON SERVICES FOR CHILDREN & FAMILIES		NO
7660	CRITTENTON SERVICES FOR CHILDREN & FAMILIES		NO
7661	CRITTENTON SERVICES FOR CHILDREN AND FAMILIES		NO
7667	ALMANSOR CLINICAL SERVICES		NO
7669	HATHAWAY SYCAMORES CHILD AND FAMILY SERVICES		NO
7670	HATHAWAY-SYCAMORES CHILD AND FAMILY SERVICES		NO
7671	GATEWAYS OUTPATIENT PERCY VILLAGE		NO
7672	SOUTH BAY MHS FSP PROGRAM		NO
7677	PC PORTALS MARIPOSA CLUBHOUSE		NO
7678	PC PORTALS WILSHIRE		NO
7679	HERITAGE CLINIC-PALMDALE		NO
7680	SSG-LITTLE TOKYO SERVICE CENTER		NO
7681	SSG WEBER COMMUNITY CENTER		NO
7682	SSG-SAMOAN NATIONAL NURSES ASSOCIATION		NO
7683	SSG-CAMBODIAN ASSOCIATION OF AMERICA		NO
7685	SSG CHINATOWN SERVICE CENTER		NO
7685	SSG-CHINATOWN SERVICE CENTER		NO
7686	SSG-PACS-LONG BEACH		NO
7690	PACIFIC CLINICS PORTALS COMMUNITY CONNECTIONS		NO
7693	JEWISH FAMILY SERVICE OF LOS ANGELES (JFSLA)		NO
7694	JEWISH FAMILY SERVICES OF LOS ANGELES		NO
7697	LOS PADRINOS JUVENILE HALL - PACIFIC CLINICS		NO

Nov 12, 2020

164

For first time visit and/or new referrals, please contact provider. To obtain Mental Health Information and Services confidentially, please call the 24/7 ACCESS Center Hotline at 1-800-854-7771. (For TDD-TTY, call 1-866-735-2922.) To schedule interpreter services for the hearing impaired (American Sign Language-ASL), please call the 24/7 ACCESS Center Hotline. *MHS refers to individual/group therapy and collateral services. Provider: DMH = Directly-Operated Facility; NGA = Non-Governmental Agency (Contractor); FFS = Fee-for-Service.

Attestation

Provider Number	Provider Name	Attestation Received - YES	Attestation Received - NO
7701	HOMELESS OUTREACH AND MOBILE ENGAGEMENT (HOME) TEAM		NO
7702	TIES FOR FAMILIES		NO
7705	SERVICE AREA 3 FULL SERVICE PARTNERSHIP	YES	
7706	DOWNTOWN MENTAL HEALTH CENTER FSP PROGRAM		NO
7707	COMPTON MENTAL HEALTH CENTER		NO
7708	THE INSTITUTE FOR THE REDESIGN OF LEARNING - ALMANSOR		NO
7709	ALMA FAMILY SERVICES		NO
7710	SOCIAL MODEL RECOVERY SYSTEMS - RIVER COMMUNITY DAY TREATMENT		NO
7711	PATHWAYS COMMUNITY SERVICES		NO
7712	ETTIE LEE		NO
7714	VISTA DEL MAR WRAPAROUND SA 8		NO
7715	WOMEN'S REINTEGRATION SERVICES	YES	
7716	ANTELOPE VALLEY KIDZ CONNECTION	YES	
7718	MASADA HOMES		NO
7721	DREW CHILD DEVELOPMENT CORPORATION		NO
7722	CHCADA - CLIENT RUN WELLNESS CENTER		NO
7724	WISE & HEALTHY AGING		NO
7727	JWCH INSTITUTE INC.		NO
7730	EXCEPTIONAL CHILDREN'S FOUNDATION		NO
7731	TRI-CITIES MHC		NO
7733	LOS ANGELES CHILD GUIDANCE CLINIC - BHS LINCOLN HEIGHTS	YES	
7736	CHILDREN'S INSTITUTE INC.		NO
7737	SHIELDS FOR FAMILIES KAY STREET		NO

Nov 12, 2020

165

For first time visit and/or new referrals, please contact provider. To obtain Mental Health Information and Services confidentially, please call the 24/7 ACCESS Center Hotline at 1-800-854-7771. (For TDD-TTY, call 1-866-735-2922.) To schedule interpreter services for the hearing impaired (American Sign Language-ASL), please call the 24/7 ACCESS Center Hotline. *MHS refers to individual/group therapy and collateral services. Provider: DMH = Directly-Operated Facility; NGA = Non-Governmental Agency (Contractor); FFS = Fee-for-Service.

Attestation

Provider Number	Provider Name	Attestation Received - YES	Attestation Received - NO
7738	HARBOR UCLA WELLNESS CENTER		NO
7739	HOLLYWOOD MHC WELLNESS CENTER		NO
7740	SA 8, EMERGENCY OUTREACH BUREAU/CRISIS HOMELESS		NO
7741	HATHAWAY SYCAMORES CHILD AND FAMILY SERVICES		NO
7744	HATHAWAY SYCAMORES CHILD FAMILY SERVICES		NO
7746	WEST VALLEY MHC, FCCS/FSP		NO
7748	PACIFIC CLINICS - HOPE CENTER		NO
7749	UPLIFT FAMILY SERVICES - HOLLYGROVE		NO
7750	UPLIFT FAMILY SERVICES - LYNWOOD		NO
7751	PATHWAYS COMMUNITY SERVICES		NO
7752	SPECIALIZED FOSTER CARE-SOUTH COUNTY		NO
7753	SPECIALIZED FOSTER CARE-GLENDORA	YES	
7754	SPECIALIZED FOSTER CARE-CHATSWORTH		NO
7755	FOOTHILL FAMILY SERVICE DUARTE	YES	
7756	AV WELLNESS & ENRICHMENT CENTER		NO
7757	DOWNTOWN MENTAL HEALTH CENTER - FCCS PROGRAM		NO
7758	SOUTH BAY MENTAL HEALTH SERVICES WELLNESS CENTER		NO
7759	PROJECT 50 MENTAL HEALTH CLINIC		NO
7760	SAN FERNANDO ADULT FCCS		NO
7761	SAN FERNANDO VALLEY COMMUNITY MENTAL HEALTH CENTER, INC-CORNERSTONE STREET TO HOME		NO
7762	ST. JOSEPH'S CENTER-VENICE/LINCOLN		NO
7763	SHIELDS FOR FAMILIES		NO
7764	SHIELDS FOR FAMILIES	YES	

Nov 12, 2020

166

For first time visit and/or new referrals, please contact provider. To obtain Mental Health Information and Services confidentially, please call the 24/7 ACCESS Center Hotline at 1-800-854-7771. (For TDD-TTY, call 1-866-735-2922.) To schedule interpreter services for the hearing impaired (American Sign Language-ASL), please call the 24/7 ACCESS Center Hotline. *MHS refers to individual/group therapy and collateral services. Provider: DMH = Directly-Operated Facility; NGA = Non-Governmental Agency (Contractor); FFS = Fee-for-Service.

Attestation

Provider Number	Provider Name	Attestation Received - YES	Attestation Received - NO
7765	NORTHEAST WELLNESS CENTER		NO
7768	SHIELDS FOR FAMILIES		NO
7769	EDELMAN WELLNESS CENTER		NO
7770	FACTS PROGRAM		NO
7771	HOLLYWOOD MHC FSP PROGRAM		NO
7772	BRIDGES INC. TRUSTART OP		NO
7773	SHARE DOWNTOWN		NO
7774	EXODUS WELLNESS CENTER		NO
7775	D'VEAL FAMILY & YOUTH SERVICES - WRAP		NO
7776	VISTA DEL MAR		NO
7777	EAST SAN GABRIEL VALLEY MENTAL HEALTH		NO
7779	CHILDREN'S INSTITUTE INC.		NO
7780	CHILDREN'S INSTITUTE INC.		NO
7782	CHILDREN'S BUREAU SOCIAL MAGNOLIA PLACE		NO
7783	EXODUS RECOVERY INC.		NO
7784	AMERICAN INDIAN COUNSELING CENTER	YES	
7785	HERITAGE CLINIC MID-CITY		NO
7787	VIP-COMMUNITY MENTAL HEALTH CENTER		NO
7789	UCLA TIES FOR FAMILIES		NO
7790	TESSIE CLEVELAND COMMUNITY SERVICES		NO
7791	VIP CMHC INC-LAC/USC CHILD PSYCHIATRY		NO
7792	MASADA HOMES		NO
7793	TESSIE CLEVELAND COMMUNITY SERVICE		NO
7795	SPECIALIZED FOSTER CARE - WEST LOS ANGELES		NO
7796	EXODUS RECOVERY URGENT CARE CENTER-EASTSIDE		NO

Nov 12, 2020

167

For first time visit and/or new referrals, please contact provider. To obtain Mental Health Information and Services confidentially, please call the 24/7 ACCESS Center Hotline at 1-800-854-7771. (For TDD-TTY, call 1-866-735-2922.) To schedule interpreter services for the hearing impaired (American Sign Language-ASL), please call the 24/7 ACCESS Center Hotline. *MHS refers to individual/group therapy and collateral services. Provider: DMH = Directly-Operated Facility; NGA = Non-Governmental Agency (Contractor); FFS = Fee-for-Service.

Attestation

Provider Number	Provider Name	Attestation Received - YES	Attestation Received - NO
7797	EXODUS RECOVERY INC. WESTSIDE		NO
7798	TRI-CITIES MENTAL HEALTH AUTHORITY		NO
7801	DMH/DHS COLLABORATION-EL MONTE		NO
7803	DMH/DHS COLLABORATION PROGRAM - ROYBAL		NO
7804	DMH-DHS COLLABORATION-LONG BEACH		NO
7805	STEP UP ON HOLLYWOOD		NO
7806	ALMA FAMILY SERVICES		NO
7807	DMH/DHS COLLABORATION		NO
7809	SPECIALIZED FOSTER CARE-EL MONTE	YES	
7810	SPECIALIZED FOSTER CARE	YES	
7811	SPECIALIZED FOSTER CARE	YES	
7812	DIDI HIRSCH PSYCHIATRIC SERVICES-GLENDALE		NO
7813	RIO HONDO CENTRO DE BIENESTAR	YES	
7814	LOS ANGELES UNIFIED SCHOOL DISTRICT, SCHOOL MENTAL HEALTH VALLY CLINIC		NO
7815	MARYVALE		NO
7816	ROSEMARY CHILDREN'S SERVICES		NO
7817	CHILDREN'S INSTITUTE INC.		NO
7818	DMH/DHS COLLABORATION - MID VALLEY		NO
7819	ALMA FAMILY SERVICES		NO
7820	OCEAN PARK COMMUNITY CENTER		NO
7821	JUVENILE JUSTICE TRANSITIONAL AFTERCARE SERVICES	YES	
7822	MASADA HOMES		NO
7824	SCHARP - BELLFLOWER		NO
7825	KOREAN AMERICAN FAMILY SERVICES		NO

Nov 12, 2020

168

For first time visit and/or new referrals, please contact provider. To obtain Mental Health Information and Services confidentially, please call the 24/7 ACCESS Center Hotline at 1-800-854-7771. (For TDD-TTY, call 1-866-735-2922.) To schedule interpreter services for the hearing impaired (American Sign Language-ASL), please call the 24/7 ACCESS Center Hotline. *MHS refers to individual/group therapy and collateral services. Provider: DMH = Directly-Operated Facility; NGA = Non-Governmental Agency (Contractor); FFS = Fee-for-Service.

Attestation

Provider Number	Provider Name	Attestation Received - YES	Attestation Received - NO
7826	SCHARP - LYNWOOD		NO
7827	WESLEY HEALTH CENTERS		NO
7828	THE SABAN FREE CLINIC		NO
7829	EISNER PEDIATRIC FAMILY MEDICAL CENTER		NO
7830	JWCH WESLEY HEALTH CENTERS		NO
7832	TARZANA TREATMENT CENTERS, INC.		NO
7833	TARZANA TREATMENT CENTERS, INC.		NO
7834	ASIAN PACIFIC HEALTH CARE VENTURE - INNOVATIONS		NO
7835	SSG AVRC		NO
7835	SSG-AVRC - ANTELOPE VALLEY		NO
7836	JUNIOR BLIND OF AMERICA		NO
7837	TELECARE IMD STEP-DOWN		NO
7838	EL DORADO - INGLEWOOD		NO
7841	DMH/DHS COLLABORATION - MLK MACC		NO
7842	ST. JOSEPH'S CENTER-SANTA MONICA		NO
7843	CHILDREN'S HOSPITAL LOS ANGELES		NO
7844	TELECARE LOS ANGELES - AB 109		NO
7846	CHILDREN'S INSTITUTE, INC.		NO
7847	OCEAN PARK COMMUNITY CENTER		NO
7849	HELPLINE YOUTH COUNSELING INC.		NO
7850	UNIVERSITY MUSLIM MEDICAL ASSOCIATION (UMMA)		NO
7851	THE VILLAGE FAMILY SERVICES		NO
7852	MASADA HOMES		NO
7854	FOR THE CHILD, INC. OP		NO
7855	PENNY LANE CENTERS		NO

Nov 12, 2020

169

For first time visit and/or new referrals, please contact provider. To obtain Mental Health Information and Services confidentially, please call the 24/7 ACCESS Center Hotline at 1-800-854-7771. (For TDD-TTY, call 1-866-735-2922.) To schedule interpreter services for the hearing impaired (American Sign Language-ASL), please call the 24/7 ACCESS Center Hotline. *MHS refers to individual/group therapy and collateral services. Provider: DMH = Directly-Operated Facility; NGA = Non-Governmental Agency (Contractor); FFS = Fee-for-Service.

Attestation

Provider Number	Provider Name	Attestation Received - YES	Attestation Received - NO
7856	STAR VIEW COMMUNITY SERVICES, CARSON CENTER		NO
7857	THE VILLAGE FAMILY SERVICES		NO
7858	PACIFIC CLINIC - CENTRO FAMILIAR - EL MONTE		NO
7860	HACIENDA OF HOPE, PRRCH COS		NO
7861	EGGLESTON YOUTH CENTER INC.		NO
7862	HAYNES FAMILY OF PROGRAMS, INC.		NO
7863	ALMA FAMILY SERVICES		NO
7864	PENNY LANE CENTERS		NO
7865	VETERANS AND LOVED ONES RECOVERY (VALOR)		NO
7866	THE WHOLE CHILD		NO
7868	DIDI HIRSCH PSYCHIATRIC SERVICES - PROJECT 60		NO
7870	SHARE, PRRCH		NO
7871	EXODUS RECOVERY INC.,		NO
7872	D'VEAL FAMILY & YOUTH SERVICES		NO
7873	D'VEAL FAMILY & YOUTH SERVICES		NO
7874	D'VEAL FAMILY & YOUTH SERVICES		NO
7875	ALMA FAMILY SERVICES		NO
7876	KEDREN COMMUNITY MENTAL HEALTH CENTER		NO
7877	BURBANK MENTAL HEALTH EVALUATION TEAM		NO
7878	D'VEAL FAMILY & YOUTH SERVICES		NO
7879	VIP COMMUNITY MENTAL HEALTH CENTER, INC.		NO
7880	D'VEAL FAMILY & YOUTH SERVICES		NO
7881	SSG PROJECT 180 NORTH		NO
7882	TARZANA TREATMENT CENTERS		NO
7883	HILLSIDES FAMILY RESOURCE CENTER EAST SAN GABRIEL VALLEY		NO

Nov 12, 2020

170

For first time visit and/or new referrals, please contact provider. To obtain Mental Health Information and Services confidentially, please call the 24/7 ACCESS Center Hotline at 1-800-854-7771. (For TDD-TTY, call 1-866-735-2922.) To schedule interpreter services for the hearing impaired (American Sign Language-ASL), please call the 24/7 ACCESS Center Hotline. *MHS refers to individual/group therapy and collateral services. Provider: DMH = Directly-Operated Facility; NGA = Non-Governmental Agency (Contractor); FFS = Fee-for-Service.

Attestation

Provider Number	Provider Name	Attestation Received - YES	Attestation Received - NO
7884	CA HISPANIC COMMISSION ALCOHOL & DRUG ABUSE - ROOSEVELT ISHC		NO
7885	TARZANA TREATMENT CENTERS		NO
7887	JWCH INSTITUTE INC. - CENTER FOR COMMUNITY HEALTH		NO
7888	JWCH INSTITUTE-NORWALK REGIONAL HEALTH CENTER		NO
7889	AVIVA FAMILY AND CHILDREN'S SERVICES		NO
7890	EXODUS URGENT CARE CENTER (UCC) - 23 HOUR PSYCHIATRIC CRISIS CENTER		NO
7891	BAYFRONT YOUTH AND FAMILY SERVICES		NO
7892	DMH-DHS COLLABORATION-LONG BEACH		NO
7893	ALMA FAMILY SERVICES		NO
7894	EL DORADO-VAN NUYS MEDICAL		NO
7895	DAVID & MARGARET HOMES		NO
7896	PACIFIC CLINICS - WHITTIER FAMILY CENTER		NO
7897	ELDORADO MEDICAL AND MENTAL HEALTH SERVICES-LAWNDALE		NO
7898	SHIELDS FOR FAMILIES		NO
7899	ELDORADO PALMDALE		NO
7900	NEW DIRECTION VETS, OASIS FOR WOMEN		NO
7902	PACIFIC CLINICS - CENTRO FAMILIA		NO
7903	PACIFIC CLINICS - EL CAMINO		NO
7904	DOWNTOWN MHC		NO
7905	DOWNTOWN MENTAL HEALTH CENTER - CALWORKS PROGRAM		NO
7906	SCHOOL THREAT ASSESSMENT RESPONSE TEAM (START) PROGRAM		NO

Nov 12, 2020

171

For first time visit and/or new referrals, please contact provider. To obtain Mental Health Information and Services confidentially, please call the 24/7 ACCESS Center Hotline at 1-800-854-7771. (For TDD-TTY, call 1-866-735-2922.) To schedule interpreter services for the hearing impaired (American Sign Language-ASL), please call the 24/7 ACCESS Center Hotline. *MHS refers to individual/group therapy and collateral services. Provider: DMH = Directly-Operated Facility; NGA = Non-Governmental Agency (Contractor); FFS = Fee-for-Service.

Attestation

Provider Number	Provider Name	Attestation Received - YES	Attestation Received - NO
7909	NEW DIRECTION VETS		NO
7910	PERSONAL INVOLVEMENT CENTER		NO
7911	EXODUS RECOVERY INC. MLK-ICC		NO
7912	THE WHOLE CHILD - BIRTH TO FIVE CENTER		NO
7913	LAC-OLIVE VIEW-URGENT CARE CENTER		NO
7915	PACIFIC CLINIC - LIFE PROGRAM		NO
7916	MLK MEDICAL HUB		NO
7917	SA 6 SB82 MOBILE TRIAGE TEAM		NO
7918	PROJECT RETURN		NO
7919	PROJECT RETURN; HOPEWELL		NO
7920	PROJECT RETURN; HACIENDA OF HOPE		NO
7921	SA 3 SB82 MOBILE TRIAGE TEAM	YES	
7922	SA 2 SB82 MOBILE TRIAGE TEAM		NO
7924	SA 4 MOBILE TRIAGE TEAM		NO
7925	HILLSIDE FAMILY RESOURCE CENTER-POMONA		NO
7926	ASSISTED OUTPATIENT TREATMENT		NO
7927	TOPANGA WEST, ACT HEALTH AND WELLNESS CLINIC		NO
7928	ASSISTED OUTPATIENT TREATMENT-LITTLE TOKYO		NO
7929	SA 7 SB82 MOBILE TRIAGE TEAM	YES	
7930	OLIVE VIEW MEDICAL CENTER HUB		NO
7931	HIGH DESERT REGIONAL MEDICAL CENTER		NO
7933	SA1 SB82 MOBILE TRIAGE TEAM		NO
7934	SA 5 SB82 MOBILE TRIAGE TEAM		NO
7935	SA 8 SB82 MOBILE TRIAGE TEAM		NO
7936	HAMBURGER HOME: AVIVA FAMILY AND CHILDREN'S SERVICES		NO

Nov 12, 2020

172

For first time visit and/or new referrals, please contact provider. To obtain Mental Health Information and Services confidentially, please call the 24/7 ACCESS Center Hotline at 1-800-854-7771. (For TDD-TTY, call 1-866-735-2922.) To schedule interpreter services for the hearing impaired (American Sign Language-ASL), please call the 24/7 ACCESS Center Hotline. *MHS refers to individual/group therapy and collateral services. Provider: DMH = Directly-Operated Facility; NGA = Non-Governmental Agency (Contractor); FFS = Fee-for-Service.

Attestation

Provider Number	Provider Name	Attestation Received - YES	Attestation Received - NO
7937	VISTA DEL MAR WRAPAROUND SA 6		NO
7938	TORRANCE MET		NO
7939	BAYFRONT YOUTH AND FAMILY SERVICES		NO
7940	TESSIE CLEVELAND COM SERVICES		NO
7941	SPIRITT FAMILY SERVICES		NO
7942	ASPIRANET 8		NO
7943	INSTITUTE FOR FAMILY CENTERED SERVICES, DBA CA MENTOR		NO
7944	INSTITUTE FOR FAMILY CENTERED SERVICES, DBA CA MENTOR		NO
7945	AMANECER COMMUNITY COUSELING SERVICE		NO
7946	SOUTH EAST REGION MET		NO
7946	SOUTHEAST REGION MET		NO
7947	HOMELESS INNOVATION PROJECT		NO
7948	ROSEMARY CHILDREN'S SERVICES		NO
7949	SPECIALIZED FOSTER CARE-VAN NUYS	YES	
7950	STAR VIEW BEHAVIORAL HEALTH, INC.		NO
7951	STAR VIEW BEHAVIORAL HEALTH, INC.		NO
7952	STAR VIEW BEHAVIORAL HEALTH		NO
7953	THE HELP GROUP CHILD AND FAMILY		NO
7954	PERSONAL INVOLVEMENT CENTER, INC.		NO
7955	WEST CENTRAL WELL AND FIELD BASE TEAM		NO
7955	WEST CENTRAL WELLNESS AND FIELD BASED SERVICES		NO
7956	ST. ANNE'S AT CRENSHAW DISTRICT		NO
7957	GATEWAYS CHILD AND ADOLESCENT OUTPATIENT PROGRAM		NO

Nov 12, 2020

173

For first time visit and/or new referrals, please contact provider. To obtain Mental Health Information and Services confidentially, please call the 24/7 ACCESS Center Hotline at 1-800-854-7771. (For TDD-TTY, call 1-866-735-2922.) To schedule interpreter services for the hearing impaired (American Sign Language-ASL), please call the 24/7 ACCESS Center Hotline. *MHS refers to individual/group therapy and collateral services. Provider: DMH = Directly-Operated Facility; NGA = Non-Governmental Agency (Contractor); FFS = Fee-for-Service.

Attestation

Provider Number	Provider Name	Attestation Received - YES	Attestation Received - NO
7958	EXODUS RECOVERY, INC		NO
7959	PC MULTICULTURAL FAMILY CENTER		NO
7961	OPCC AND LAMP COMMUNITY, INC		NO
7962	OPCC AND LAMP COMMUNITY, INC		NO
7964	OLIVE CREST		NO
7966	INSTITUTE FOR FAMILY CENTERED SERVICES, DBA CA MENTOR		NO
7967	INSTITUTE FOR FAMILY CENTERED SERVICES, DBA CA MENTOR		NO
7968	AVIVA CHILD AND FAMILY SERVICES		NO
7969	AVIVA CHILD AND FAMILY SERVICES		NO
7970	AVIVA CHILD AND FAMILY SERVICES		NO
7971	SAN FERNANDO VALLEY COMMUNITY MENTAL HEALTH CENTER, INC.,- MILESTONES		NO
7972	INSTITUTE FOR FAMILY CENTERED SERVICES (CA MENTOR)		NO
7973	CHILD AND FAMILY GUIDANCE CENTER		NO
7974	LAUSD LOCKE WELLNESS CENTER		NO
7975	EL CENTRO DE AMISTAD - TOPANGA		NO
7976	SOCIAL MODEL RECOVERY SYSTEM, INC. - OMNI CENTER		NO
7977	ENKI YOUTH AND FAMILY SERVICES-WEST COVINA		NO
7978	DAVID AND MARGARET HOMES		NO
7978	VIP SMIDT TECH HIGH SCHOOL		NO
7979	HARBOR-UCLA K.I.D.S HUB		NO
7980	CHILD AND FAMILY GUIDANCE CENTER		NO
7981	SSG KYCC		NO

Nov 12, 2020

174

For first time visit and/or new referrals, please contact provider. To obtain Mental Health Information and Services confidentially, please call the 24/7 ACCESS Center Hotline at 1-800-854-7771. (For TDD-TTY, call 1-866-735-2922.) To schedule interpreter services for the hearing impaired (American Sign Language-ASL), please call the 24/7 ACCESS Center Hotline. *MHS refers to individual/group therapy and collateral services. Provider: DMH = Directly-Operated Facility; NGA = Non-Governmental Agency (Contractor); FFS = Fee-for-Service.

Attestation

Provider Number	Provider Name	Attestation Received - YES	Attestation Received - NO
7982	AMET		NO
7983	ALMA FAMILY SERVICES		NO
7984	SA 5, CCMET		NO
7985	SSG SILVER		NO
7986	EL CENTRO DEL PUEBLO, INC.	YES	
7987	SA 5,SMMET		NO
7988	GARDENA/HAWTHORNE GHMET		NO
7989	PERSONAL INVOLVEMENT CENTER, INC.		NO
7990	PROTOTYPES OBHS POMONA		NO
7991	SA 3, POMONA PMET		NO
7992	PROTOTYPES OBHS PASADENA		NO
7993	SA 3, MONTERY PARK MPMET		NO
7994	PROTOTYPES OBHS WELLNESS CENTER		NO
7995	MENS COMMUNITY REINTEGRATION PROGRAM		NO
7996	INSTITUTE FOR FAMILY CENTERED SERVICES, DBA CA MENTOR		NO
7997	MONTEBELLO MMET		NO

Nov 12, 2020

175

For first time visit and/or new referrals, please contact provider. To obtain Mental Health Information and Services confidentially, please call the 24/7 ACCESS Center Hotline at 1-800-854-7771. (For TDD-TTY, call 1-866-735-2922.) To schedule interpreter services for the hearing impaired (American Sign Language-ASL), please call the 24/7 ACCESS Center Hotline. *MHS refers to individual/group therapy and collateral services. Provider: DMH = Directly-Operated Facility; NGA = Non-Governmental Agency (Contractor); FFS = Fee-for-Service.