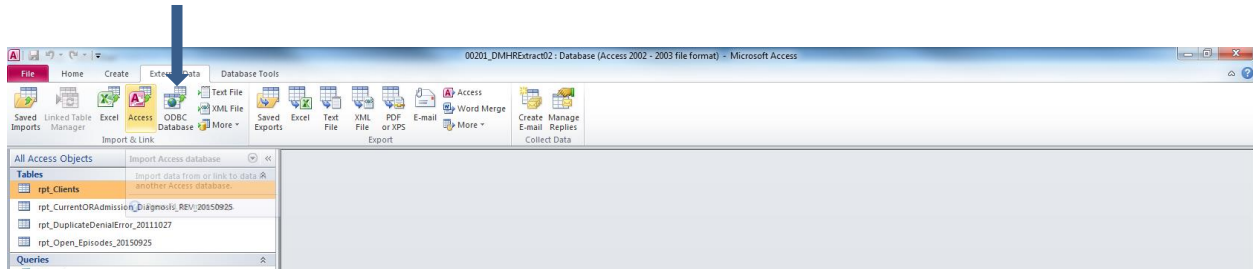
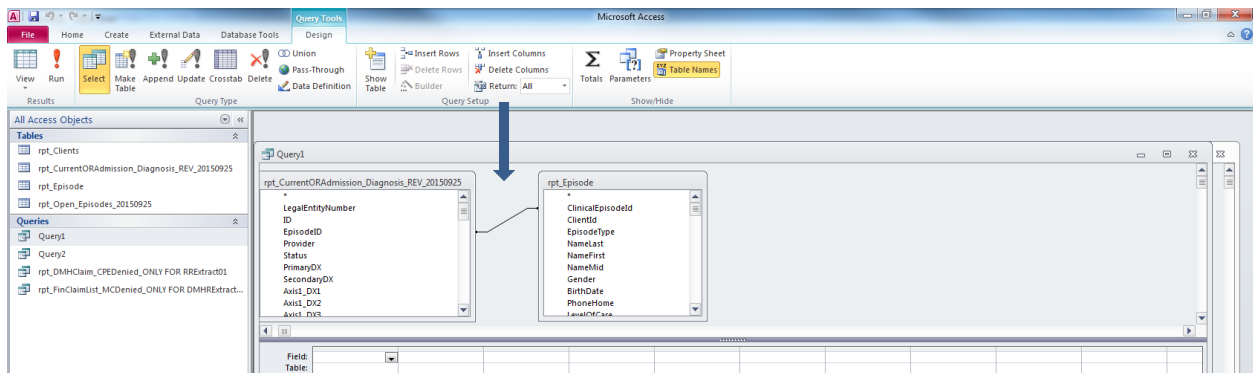


Steps to extract ClientID and client name for the ICD10 Conversion file rpt_CurrentORAdmission_Diagnosis_REV_20150925:

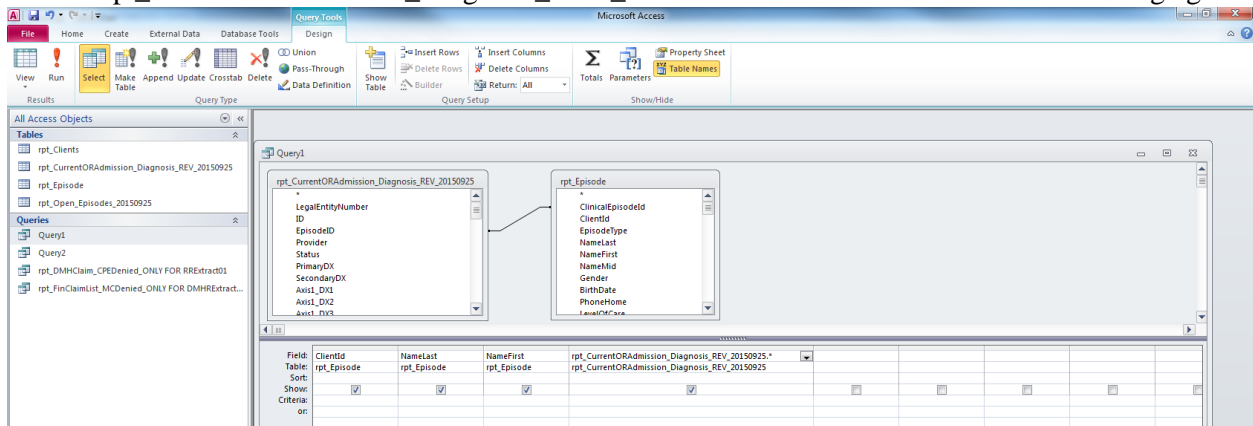
1. Import table rpt_Episode from 00XXX_RRExtract01.
On **External Data** tab, click on Access. Find the location of the extract file and choose rpt_Episode to import.



2. Create Query to combine tables rpt_CurrentORAdmission_Diagnosis_Rev_20150925 and rpt_Episode.
On **Create** tab, click on **Query Design**. Add both tables into the query design view and link field EpisodeID in rpt_CurrentORAdmission_Diagnosis_Rev_20150925 to field ClinicalEpisodeId in rpt_Episode.



3. Double click on field ClientId, NameLast, NameFirst from rpt_Episode and * (all fields) from rpt_CurrentORAdmission_Diagnosis_REV_20150925 to show all those fields in the design grid.



ICD10 Diagnosis Conversion query in SQL View

```
SELECT rpt_Episode.ClientId, rpt_Episode.NameLast, rpt_Episode.NameFirst, rpt_Episode.BirthDate,
rpt_CurrentORAdmission_Diagnosis_REV_20150925.PrimaryDX_DSMIV_code,
rpt_CurrentORAdmission_Diagnosis_REV_20150925.SecondaryDX_DSMIV_code,
rpt_CurrentORAdmission_Diagnosis_REV_20150925.ConvertedPrimaryICD10_NCHAR,
rpt_CurrentORAdmission_Diagnosis_REV_20150925.ConvertedSecondaryICD10_NCAHR,
rpt_Episode.AdmitDate, rpt_Episode.DischargeDate
FROM rpt_CurrentORAdmission_Diagnosis_REV_20150925 INNER JOIN rpt_Episode ON
rpt_CurrentORAdmission_Diagnosis_REV_20150925.EpisodeID = rpt_Episode.ClinicalEpisodeId;
```