



LAX Suspect Marburg Virus Disease (MVD) Patient Assessment and Transportation Guidelines

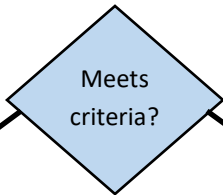


Los Angeles Fire Department (LAFD) responding to Los Angeles International Airport (LAX) CDC Illness Response Activation for suspected MVD passenger with symptoms

Symptoms may include: fever, headache, joint and muscle aches, weakness, fatigue, diarrhea, vomiting, stomach pain and lack of appetite, and in some cases, bleeding

AND

Confirmed travel to the **Rwanda** within 21 days (3 weeks) of symptom onset



YES

Implement recommended PPE:

1. Level C splash protection, double gloves, full body suit, boot covers, hooded face shield, N95 mask or APR/PAPR/SCBA respirator
2. Place face mask on patient if able to tolerate

NO

Implement standard precautions for infection control

Follow applicable prehospital care policy

Follow **Non-Invasive Emergency Medical Treatment for Patients Suspected of Viral Hemorrhagic Fevers (VHF) Screened at LAX***

Remain with patient until High Risk Ambulance (HRA) arrives

Hand off care to HRA. HRA will transport to designated SPTC

CDC will notify the Department of Public Health (DPH) by calling **(213) 240-7941** Monday through Friday 8a-5p or **(213) 974-1234** (nights, weekends, holidays)

*Avoid invasive and/or aerosol generating procedures (AGPs) when possible (e.g., vascular access, positive-pressure ventilation, intubation, nebulized treatments). If invasive and/or AGPs are required, don PPE prior, limit the number of personnel involved to the minimum necessary, and avoid exposure to bystanders

DPH will:

1. Make arrangements with designated Special Pathogen Treatment Center (SPTC)
2. Request a HRA through the MAC