



Health Services
LOS ANGELES COUNTY

November 15, 2023

**Los Angeles County
Board of Supervisors**

Hilda L. Solis
First District


Holly J. Mitchell
Second District

Lindsey P. Horvath
Third District

Janice K. Hahn
Fourth District

Kathryn Barger
Fifth District

TO: Supervisor Janice K. Hahn, Chair
Supervisor Hilda L. Solis
Supervisor Holly J. Mitchell
Supervisor Lindsey P. Horvath
Supervisor Kathryn Barger

FROM: Christina R. Ghaly, M.D. 
Director

SUBJECT: **HOUSING FOR HEALTH BIENNIAL REPORT
(ITEM NO. 16 FROM THE JANUARY 14, 2014
BOARD MEETING)**

Christina R. Ghaly, M.D.
Director

Hal F. Yee, Jr., M.D., Ph.D.
Chief Deputy Director, Clinical Affairs

Nina J. Park, M.D.
Chief Deputy Director, Population Health

Elizabeth M. Jacobi, J.D.
Administrative Deputy

In November 2012, the Department of Health Services (DHS) established the Housing for Health (HFH) division to expand access to supportive housing for DHS patients who are homeless, have complex health conditions, and/or are high utilizers of DHS services. With investments from other Los Angeles County departments and the passage of Measure H, HFH's target population has expanded to people experiencing homelessness with complex health and/or behavioral health needs and other vulnerable populations. HFH offers a full continuum of services to address the range of housing and service needs of its clients, which was built using a flexible service delivery model that strives to adjust to individual needs as they change overtime.

This report provides an update on HFH from January 1, 2023 – June 30, 2023 to the Board of Supervisors on the entirety of HFH programs, including outreach services, interim and permanent housing, benefits advocacy, clinical services, and special initiatives.

If you have any questions, please contact me or your staff may contact Sarah Mahin, Director of HFH, by email at smahin@dhs.lacounty.gov.

CRG: sm

Attachment

c: Chief Executive Office
County Counsel
Executive Office, Board of Supervisor

313 N. Figueroa Street, Suite 912
Los Angeles, CA 90012

Tel: (213) 288-8050
Fax: (213) 481-0503

www.dhs.lacounty.gov

*"To advance the health of our
patients and our
communities by
providing extraordinary
care"*

www.dhs.lacounty.gov





Health Services
LOS ANGELES COUNTY

HOUSING FOR HEALTH

VOLUME IV: JANUARY-JUNE 2023

Biannual Report



From the Director of Housing for Health:

Over the past 10 years, the Housing for Health team has demonstrated tremendous dedication to fulfilling our mission: To improve the health and well-being of vulnerable residents of Los Angeles County – people experiencing homelessness and housing instability – by delivering an integrated system of care connecting housing, medical and behavioral services, and income supports.

During the first six months of 2023, I have watched Housing for Health's workforce grow to more than 600 team members and appreciated seeing them all step into that mission in a deeper way and with the full support of the County behind them. Housing for Health's team is responding to LA County's homelessness emergency with an even stronger commitment to bringing unsheltered people indoors, getting more people into Permanent Supportive Housing, and linking them to necessary mental health, substance use disorder, and other services and supports.

The emergency declaration enabled us to enhance and streamline hiring and contracting processes so that our staff and network of contracted community providers can maintain their focus on delivering high quality housing and services. We appreciate the Board of Supervisors for their leadership and for taking such important steps in enabling critical work to move forward.

Housing for Health staff and partners spend their days engaging clients in the field, caring for them in Skid Row's Star health clinic, preventing them from falling into homelessness, connecting them to interim and permanent housing, linking them with mental health and substance use services, and providing them with intensive, wraparound supports.

Not only do Housing for Health staff and our contracted partners meet the immediate needs of our clients, but they go above and beyond to ensure that people are cared for with compassion and empathy, and that we're taking a whole person approach to improving health and wellbeing. Where we see gaps in services, we strive to fill them– with new funding, new approaches, new partnerships, and new programs. At Housing for Health, incredible opportunities to innovate and to test new models have always shaped our work.

That is demonstrated in everything from the Skid Row Action Plan– a community-led initiative to create a roadmap for Skid Row– to Safe Landing, a 24/7 walk-in facility with a variety of housing and clinical supports– to one of our newest initiatives, the Interim Housing Outreach Program (IHOP). Made possible with the support of our Managed Care Plan partners at LA Care and Health Net and collaboration with the Departments of Mental Health and Public Health, IHOP teams assess the Activities of Daily Living (ADL) needs of interim housing participants with health, mental health, or substance use disorder needs and refer them to the appropriate services. Housing for Health and our partners know that we cannot stop when a formerly unsheltered person secures a safe place to sleep– our work continues until a client is linked to the appropriate health care provider, Cal Fresh benefits, occupational therapist, or drug use treatment. And of course, to permanent housing– our North Star has always been working to ensure that Housing for Health participants obtain and retain permanent housing because we know that permanent housing is the cornerstone of health and wellness.

We remain committed to this work – and to doing whatever it takes to make a difference for individuals and families experiencing homelessness in LA County. On behalf of our compassionate and dedicated staff and partners, I present this overview of Housing for Health's activities for the first half of 2023. Much of this has been possible because of the public's support of Measure H, which provides unprecedented flexible resources to put tens of thousands of unhoused people on a healthier path towards home.

Sincerely,

Sarah Mahin
Director, Housing for Health

Inside

- 2 From the Director of Housing for Health
- 3 Who We Are
 - Street-Based Engagement
 - Homeless Emergency Proclamations and Encampment Resolutions
 - Multi-Disciplinary Team Expansions
 - LA Metro/Housing for Health Partnership
- 5 Interim Housing
 - Flexible Housing Subsidy Pool
- 6 Permanent Supportive Housing
- 7 In-Home Care Giving
- 8 Enriched Residential Care
- 9 Homelessness Prevention Unit
- 10 Countywide Benefits Entitlements Services Team
- 11 Clinical Services
- 12 Star Clinic
- 13 Client Success Story: Star Clinic Offers More than Healthcare
- 14 Permanent Supportive Housing Clinical Support Program
 - Mobile Clinic
- 15 Special Incentives
 - Skid Row Action Plan and Encampment Resolution Fund Award
- 16 Safe Landing
- 17 Client Success Story: Family Reconnects After Four Years
- 18 Interim Housing Outreach Program
- 20 Appendix A

Whatever It Takes...

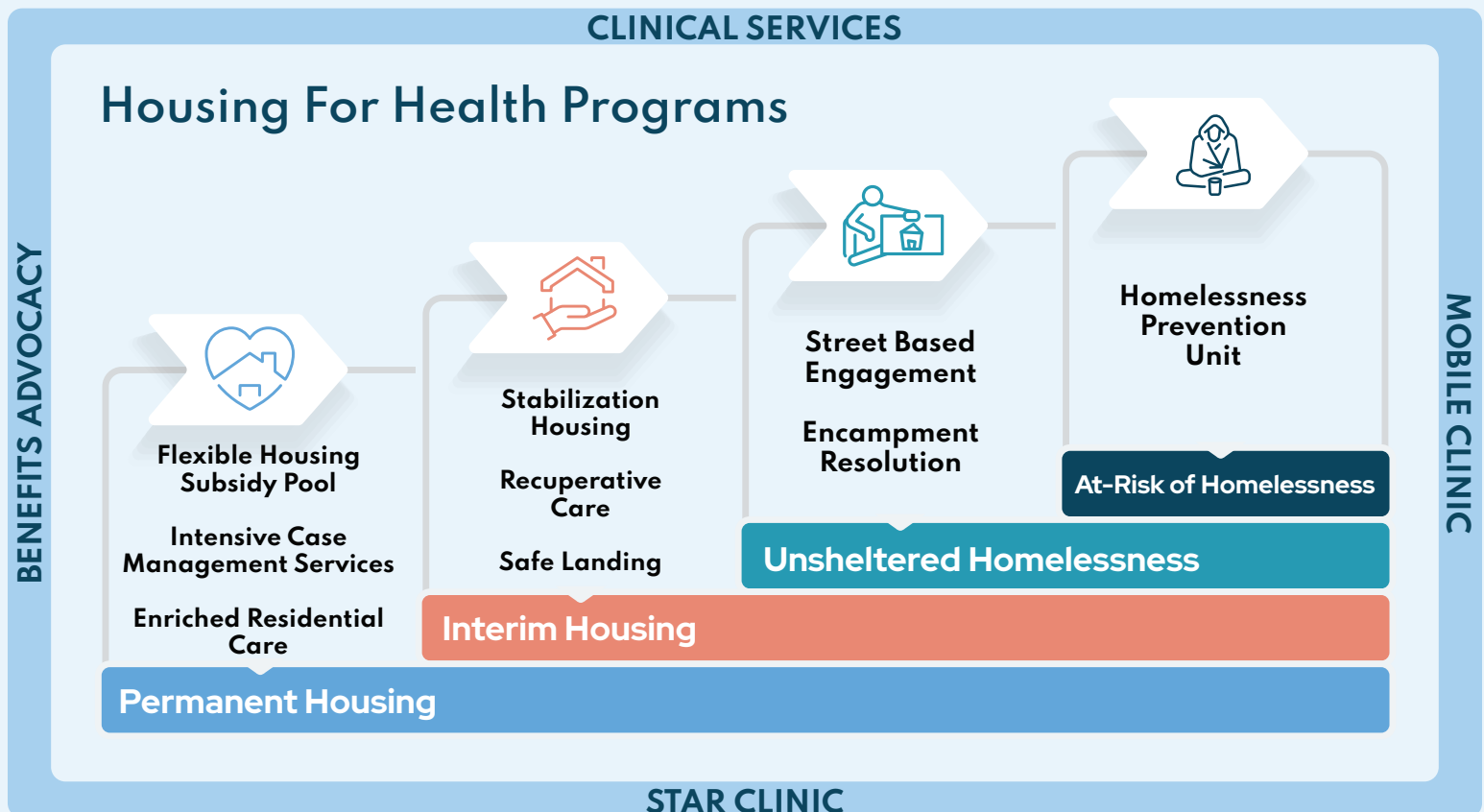
Our Origin Story

Housing for Health, a division of the Department of Health Services, was founded in 2012 to provide housing and services to unhoused patients who frequented the County's public hospitals and health services. By connecting patients with housing subsidies and intensive

case management, the program helped to stabilize individuals' health, while reducing avoidable inpatient, outpatient, and emergency department visits.

The County leveraged Housing for Health's infrastructure to expand housing and services to thousands of unhoused adults and families after Measure H, a Countywide sales tax to fund homeless services, was approved by voters in 2017. Other County departments have invested in Housing for Health housing and services for their prioritized populations.

For the past 10 years, Housing for Health has maintained its core ethos and founding principles of improving the health and quality of life for some of L.A. County's most vulnerable residents. Housing for Health now operates a full continuum of services, from street outreach to permanent housing, with case management, benefits advocacy and clinical services integrated into all programming.



Street-Based Engagement

Homeless Emergency Proclamations and Encampment Resolutions

As the City and County of Los Angeles declared homeless emergencies, Housing for Health's multi-disciplinary teams (MDTs), funded by Measure H and operated by community partners, were well-positioned to lead urgent new efforts to get people out of encampments and into housing, known as encampment resolution. MDTs worked closely with the CEO Homeless Initiative, County departments, LAHSA, the City of Los Angeles, other cities and jurisdictions, and other stakeholders to quickly, effectively, and compassionately bring unhoused people indoors. From January through June 2023, the teams helped move hundreds of vulnerable unhoused people from encampments in communities throughout Hollywood, Venice, South Los Angeles, Skid Row, Echo Park, Chatsworth and many more. Housing for Health's Street Based Engagement unit leaned into these efforts too, leading complex coordination and planning to make these operations successful. Housing for Health recently launched service resource fairs at interim housing sites following the operations to connect participants to a wide array of county, state, and federal services, and increase pathways into permanent housing and overall wellbeing.



Dionicio Erazo with a Housing for Health COVID Response Team provides medical care and support to Darwin Villa in Chatsworth.



Multi-Disciplinary Teams conducting outreach and Narcan distribution.

Multi-Disciplinary Team Expansions

The number of multi-disciplinary teams (MDTs) working across LA County is increasing substantially. Recognizing the teams' important role in our homeless delivery system, the Board of Supervisors committed Measure H funding towards increasing the number of teams by 60% from 35 to 55 teams. Eight of these new teams were deployed in January, with the remaining new teams deployed starting in July 2023. This quick expansion has aligned with the growing need for outreach resources for encampment resolution efforts. Similarly, other funders have increased their investments in MDTs and other components needed to support encampment resolution and connecting people to safe and stable housing pathways.

Multi-Disciplinary Team Outcomes

From January 1 through June 30, 2023

12,624
clients received a
service or referral
by MDTs

1,829
clients connected to
Interim Housing

765
clients were
linked to
Permanent Housing



LA Metro/Housing for Health Partnership

Housing for Health expanded its partnership with LA Metro to address the critical issue of unsheltered people using the transit system as shelter. Housing for Health began partnering with Metro in 2017 to deploy Metro-specific Multi-Disciplinary Teams (MDTs) to work in Metro stations, train lines, and buses to engage and build rapport with individuals who are unsheltered, and link them to housing and supportive services.

MDTs consist of a mental health specialist, a health specialist, a substance abuse specialist, an outreach worker, and a peer advocate. In addition to connecting clients to housing, the teams connect individuals to medical, substance abuse, mental health, harm reduction and trauma-informed care services.

The teams are provided by People Assisting The Homeless, L.A. Family Housing, Union Station Homeless Services, HOPICS, Christ Centered Ministries, and Helpline Youth Counseling. Metro now has 16 MDTs and will add eight more teams in 2023-2024.

PATH Metro MDT Program Outcomes (Fiscal Year 2022-2023)

Newly Enrolled Persons	1,844
Services Provided	11,385
Interim Placements	312
Permanent Housing Placements	264

**Most Metro MDTs were ramping up during this reporting period and will be fully operational by the second half of FY 2023/2024.*



Interim Housing

The Interim Housing (IH) program provides an avenue for people experiencing homelessness to move safely inside and connect with services and permanent housing. Housing for Health specializes in providing this temporary housing for individuals with complex medical and behavioral health conditions who need a higher level of support services than typically available in shelter settings.

Recuperative Care

Short-term housing for individuals recovering from an acute illness or injury, who have conditions that would be exacerbated if they are not in stable housing with medical care.

Stabilization Housing

Interim housing for unhoused individuals with complex health and/or behavioral health conditions who require more supportive services than are available in most shelter environments.

During the last reporting period, Housing for Health's IH program opened a new facility, Safe Landing, built and operated by our partners at Exodus Recovery, Inc. Safe Landing is a first-of-its kind 172-bed facility that allows for easy access to clinically enriched interim housing. In this reporting period, the IH program also focused on deploying new harm reduction strategies such as amnesty lockers, which give clients a place to store weapons or substances in lockers prior to entering a housing site. In addition, IH providers regularly participated in harm reduction trainings about overdose prevention and received naloxone for distribution.

Interim Housing Outcomes

From January 1 through June 30, 2023

- **207** days: average length of stay among all Interim Housing clients
- **2,684** clients served
- **291** clients, or 27.85% of all IH exits, placed in Permanent Housing



Aba Bryson and Maya, her 19 year-old support dog, at the LA General Restorative Care Village.



Credit: Ric Berryman; Summit View Apartments, a 48-unit permanent supportive housing community in Lake View Terrace. It is operated by LA Family Housing.

Flexible Housing Subsidy Pool

The Flexible Housing Subsidy Pool (FHSP) is a fiscal and contractual tool that enables Housing for Health and its partners to quickly create housing options to combine various revenue sources for local rent subsidies and to offer participants mobility if their housing needs change. The FHSP also helps facilitate engagement with landlords and housing developers so Housing for Health can respond quickly to the needs of vulnerable people who are currently or who have experienced homelessness in the past. The program is administered by Housing for Health's nonprofit partner, Brilliant Corners.

Throughout this reporting period, Housing for Health successfully brought in additional funding sources for the FHSP. The Los Angeles County Aging and Disability Department allocated HomeSafe funding towards individuals referred to Adult Protective Services in board and care settings. The Division of HIV/STD Programs contributed additional funding in June 2023 to bring an additional 50 FHSP subsidies online for people living with HIV/AIDS. Housing for Health is also grateful to the Chief Executive Office, Homeless Initiatives for negotiating with the Managed Care Plans to bring in new funding through the Homeless and Housing Incentive Program for a variety of new services, including funding for the FHSP to provide an additional 150 units of Permanent Supportive Housing in the coming months.

FHSP Outcomes

From January 1 through June 30, 2023



- **5430** households were housed through FHSP subsidies
- **795** households were newly housed

Permanent Supportive Housing

Permanent Supportive Housing (PSH) is an evidence-based intervention that ends homelessness for vulnerable people with complex health conditions by pairing housing subsidies and supportive services. Housing for Health matches people to housing subsidies and Intensive Case Management Services (ICMS), which are delivered by community-based providers. ICMS services are supplemented with the wraparound support of in-home caregivers that bridge to In-Home Supportive Services, field-based nursing support by DHS, specialty mental health care from the Department of Mental Health, and substance use services funded by the Department of Public Health's Substance Use Prevention and Control division. Integrating these services promotes housing retention and improves individuals' health and overall well-being.

Throughout the last fiscal year, Housing for Health has worked diligently with the Los Angeles Homeless Services Authority (LAHSA), Public Housing Authorities, and contracted agencies to expand access to Permanent Supportive Housing through federal Emergency Housing Vouchers. Housing for Health was proud to support the Los Angeles County Development Authority in leasing up 100% of their Emergency Housing Vouchers.



Herman Givens, a resident at PATH Villas at South Gate, waters the plants. PATH Villas is a Permanent Supportive Housing site where residents receive Intensive Case Management Services.



PSH Outcomes

From January 1 through June 30, 2023



- **20,118** individuals throughout LA County received ICMS
- **1,313** individuals were newly housed in PSH and received ICMS
- **92%** of PSH participants retained housing for 1 year
- **85%** of PSH participants retained housing for 2 years

In-Home Care Giving

The In-Home Care Giving (IHCG) program was created in 2013 to provide caregiving services to support LA County's formerly homeless participants maintain independence in Permanent Support Housing. The program provides caregiving to participants who are waiting to be approved for the California In-Home Supportive Services program or who do not qualify for state assistance. IHCG caregivers can assist participants with grocery shopping, cooking, cleaning, accompaniment to appointments, and other personal care services.

In March 2023, Housing for Health started contracting with local health plans to provide care giving resources to their managed care members under Community Supports Personal Care and Homemaker Services. This partnership will expand Housing for Health's care giving program and better connects participants to health plans' other support programs (i.e., palliative care, community-based adult services, nursing home care). Additionally, we partnered with Brilliant Corners and Jewish Family Services on a grant from the Cedars Sinai Foundation to provide intensive caregiving services to Housing for Health clients living in Service Planning Areas 4 and 6. The program serves individuals regardless of documentation status and provides an additional layer of support and assessment from two Jewish Family Services care managers to ensure participants are attached to a caregiver that can meet their level of need.

In-Home Care Giving Outcomes

From January 1 through June 30, 2023



- **38** new participants were enrolled in the IHCG program
- **101** individuals received IHCG services

Enriched Residential Care

The Enriched Residential Care (ERC) program provides housing placements for individuals who require ongoing assistance, have complex physical or behavioral health conditions and are not able to manage their health care needs or activities of daily living on their own. Participants referred to ERC are often discharged from an inpatient hospital or living in an unsheltered setting or in housing that lacks the higher level of care that they require to be safe. Participants are placed in licensed residential care facilities (commonly known as Board and Cares) that provide 24/7 staffing and assistance. In addition, they receive time-limited case management to connect with ongoing benefits and services.

Housing for Health's ERC program made new placements during the reporting period thanks to funding from Care First Community Investment (CFCI). Additionally, the Los Angeles County Disability and Aging Department allocated approximately \$21 million through the HomeSafe program to Housing for Health to provide services to Adult Protective Services (APS) clients at risk of or experiencing homelessness who qualify for ERC services. This funding supports nearly 250 APS dependent ERC participants who are reported to be in endangered by abuse, neglect, exploitation, or unsafe and hazardous living conditions.

Enriched Residential Care Outcomes

From January 1 through June 30, 2023

1,102
individuals were served

152
individuals were newly placed



Thanks to the support of Housing for Health's community partner HOPICS, Verna Martinez is now living in Permanent Supportive Housing.

Homelessness Prevention Unit



Credit: Grace Widyatmadja/NPR; Homelessness Prevention Unit case manager Fred Theus visits newly enrolled client Ricky Brown in Los Angeles.

The Homelessness Prevention Unit (HPU) is a proactive, data-driven program launched in January 2021 to identify clients at high risk of becoming homeless. Clients are identified through predictive modeling by UCLA's California Policy Lab. HPU staff work with clients over four to six months to help stabilize their housing and improve their overall health. The program also provides flexible financial assistance, including rent, utility payments, vehicle repair and debt resolution. Individuals and families are also linked to County health and mental health services, substance use treatment, benefits advocacy, legal aid, employment assistance, and education.

As the result of pandemic federal relief funding, the program expanded to a team of 28 staff with the capacity to serve over 200 individuals and families at any given time. In February 2023, the HPU and California Policy Lab launched a formal evaluation to study the program's effectiveness. The evaluation will last roughly 18 months and will study outcomes for a treatment population of about 1,000 clients against a control group of a similar size.

Homelessness Prevention Unit Outcomes

From January 1 through June 30, 2023

299

households were served

88%

of HPU clients retained housing or transitioned to other permanent housing at program exit



Countywide Benefits Entitlement Services Team

The Countywide Benefits Entitlements Services Team (CBEST) helps unhoused people, individuals at-risk of homelessness, veterans, and formerly incarcerated people to apply for public benefits, including Supplemental Security Income, Social Security Disability Insurance, Cash Assistance Program for Immigrants and Veterans Affairs benefits. CBEST consists of dedicated benefit advocates, clinicians, and legal and social service partners who provide wraparound services to support successful disability benefit connections.

Many people experiencing or at-risk of homelessness are entitled to federal, state, and local benefits, but are not able to submit successful benefits applications. CBEST partners with participants to ensure that they can submit successful benefits applications and appeal benefits denials. For many disabled households, receiving disability benefits can be life changing and can mean the difference between being able to afford rent or experiencing homelessness.

CBEST Outcomes

From January 1 through June 30, 2023

7,987

individuals were enrolled in CBEST

1,034

benefit applications were submitted

85%

approval rate for benefit claims

\$1,026

average monthly award

\$4,593,637

total awarded in retroactive backpay

Capital Improvement Intermediary Program

The Capital Improvement Intermediary Program (CIIP) manages the construction of facilities that expand housing and services for people experiencing homelessness. Housing for Health works closely with its nonprofit partner, Brilliant Corners, and project sponsors to design, build, convert, and renovate spaces that offer a supportive and dignified experience for clients. See Appendix A for a full list of past and pending projects.



Jayden Alexander, Nancy Delira and Celina Alvarez from Housing Works tour the future site of 7th Avenue Village in Hacienda Heights, a future Permanent Supportive Housing location.

CIIP Outcomes

From January 1 through June 30, 2023

180
units/beds were created during
the reporting period

507
units/beds are currently
in the CIIP pipeline



Clinical Services

Two Approaches

Direct: Teams of Housing for Health nurses, social workers, substance use counselors, and other providers offer wraparound care for individuals challenged by physical and behavioral health comorbidities. These teams also conduct assessments, make clinical referrals, and deliver complex care management in non-traditional settings – such as riverbeds, shelters, and apartments – to improve client health outcomes, enhance meaningful connections to health care, and optimize quality of life.

Contracted Partners: Housing for Health clinical and non-clinical staff provide robust training and technical assistance to subcontracted community provider outreach workers and case managers so that they can accompany individuals to medical appointments, improve follow through on medications and/or treatment recommendations, develop disease self-management skills, and improve health literacy.

During the reporting period, Housing for Health expanded clinical services through its Occupational Therapy (OT) program. Made possible through investments from CalAIM- California's Medicaid waiver aimed at implementing new ways of caring for vulnerable populations- the program created three new Occupational Therapy positions to support clients with Activities of Daily Living (ADL) and Independent ADL (iADL) deficits throughout the Interim Housing, Permanent Supportive Housing, and Enriched Residential Care programs. These new staff, augmented by OT students, improve the functional status and wellbeing of clients and prevent unnecessary patient placement in assisted living and/or long-term care facilities by supporting the housing tenancy of those struggling to adapt to their living environments. Occupational therapists bring a valuable skillset to the work of caring for people with complex needs and we hope for continued program expansion.

Additionally, Housing for Health entered the development phase of future clinical programs, including the Interim Housing Outreach Program (see Special Initiatives) and the Integrated Services Program Enhancement Project, a partnership with the University of Southern California to develop case management best practices for supporting tenancy, health, and community integration of participants with disabling conditions.

Star Clinic

Located in the heart of Skid Row, the Star Clinic is a patient-centered medical home that specializes in the care of unhoused and previously unhoused patients, all of whom require a special touch from compassionate, trauma-informed providers.

The clinic acts as a hub of clinical services and specializes in serving patients with complex physical and/or behavioral health issues who suffer high rates of morbidity. The clinic also provides easy access to medical care for Housing for Health clients residing in nearby interim and permanent housing.

Over the past six months, the Star Clinic has provided Enhanced Care Management (ECM) services to over 10% of its patients as part of CalAIM. Through intensive phone and field-based support, the Star Clinic nursing and behavioral health staff have supported the transition of patients into interim housing and helped them stay in housing, coordinating care with countless inpatient teams to improve transitions of care back into the community. Star Clinic teams do whatever it takes to improve the lives of patients navigating housing instability, chronic medical conditions, and serious persistent mental illness.

Star Clinic Outcomes

From January 1 through June 30, 2023



- **2,578** unique patient encounters by Star Clinic staff providing primary and urgent care services
- **171** patients were enrolled in the ECM program
- **2,109** interventions delivered to ECM program participants



From Left to Right: Celeste Ramirez Clerk, Marta Marchequé, RN., Dr. Mark Benor, MD., Perla Cruz Jimenez, MA., Dr. Sony Ta, MD., and Maria Whitfield, BSN, RN, PHN.

» CLIENT SUCCESS STORY

Star Clinic Offers More than Healthcare

Ivonne Guzman Garcia, a community health worker at Housing for Health's Star Clinic, went ABOVE AND BEYOND to help Benigno overcome challenges he's faced for years.

Benigno G. fled Guatemala nearly 40 years ago after guerillas threatened his life when he refused to join their army. He worked for a roofing company in New Jersey for 27 years before moving to Los Angeles a decade ago to pursue a better job. It didn't work out as planned, however. He ended up struggling to find work and housing, and he eventually lost all his documents, including his identification and permanent residency card.

Over the years, Benigno developed a number of health challenges including diabetes, profound neuropathy, hypertension and cancer. He started going to the Star Clinic on Skid Row about seven years ago for regular medical care.

Just recently, he met Ivonne.

When Ivonne heard about Benigno's struggles to get his documents, she wrote an advocacy letter to the Guatemalan Consulate to request assistance. Just a week later, Benigno received multiple forms of identification from Guatemala enabling him to move ahead with restoring his permanent resident status. The Consulate even arranged for a pro bono attorney to support his case for U.S. citizenship.

"When I first met Mr. Benigno, he was angry and depressed, but he also had a strong character," said Ivonne. "Over time, he became more trusting and open to the help we wanted to provide. I am grateful to be able to work with our communities and connect them with the resources they need to live healthy and happy lives."

Benigno is currently living in Permanent Supportive Housing funded through Housing for Health's Flexible Housing Subsidy Pool program. He's also receiving case management support from Housing for Health's community partner, Brilliant Corners, and he continues to visit Star Clinic as he works to improve his health.

Through a translator, Benigno shared, "I am very happy to have met Mrs. Ivonne because she is a very kind person who has been able to understand and help me. She is still helping and supporting me."



With the support of his care team, Benigno receives regular medical care at Housing for Health's Star Clinic.

Permanent Supportive Housing Clinical Support Program

Permanent Supportive Housing Clinical Care teams provide clinical care for clients in Housing for Health funded Permanent Supportive Housing. Services include complex care management to help formerly homeless participants who are at risk of losing their homes and/or suffering from premature illness, disease, or mortality because of unmanaged physical and behavioral health conditions.

This initiative targets individuals with chronic illnesses, substance use disorders, severe mental health symptoms, and difficulties navigating health and social services. Referred by Intensive Case Management Services providers, DMH social workers, and from the list of recently discharged hospital patients, participants receive comprehensive services including regular home visits, nursing assessments and care transition management. Additionally, occupational therapists work to enhance daily living skills, medical case workers coordinate healthcare, and medical providers contribute to the overall care. Nurses also assess the need for in-home care giving services or placement in Enriched Residential Care, and transitions of care visits are conducted for participants at risk of hospital readmission or health deterioration. This comprehensive approach aims to improve health outcomes and quality of life.

PSH Supportive Care Data

From January 1 through June 30, 2023



- **485** unique clients received home-based services
- **84 unique** clients were assessed for In-Home Care Giving services
- **212** transitions of care visits conducted with high-risk patients who were discharged from DHS hospitals
- **207** clients received complex care management services

Mobile Clinic

In October 2022, Housing for Health launched L.A. County's first-ever fleet of mobile clinics on wheels to bring comprehensive care to unsheltered people experiencing homelessness throughout the County. The mobile clinic program operates in partnership with various entities, including fellow County agencies, cities, Measure H-funded outreach teams, faith-based organizations, homeless service providers and other community-based agencies.

As the only street medicine program that provides primary care to unsheltered people countywide, the mobile clinic program works closely with Housing for Health Multi-Disciplinary Teams (MDTs) to receive referrals for patients with complex medical and behavioral health needs, and to coordinate case management services. Working together, these programs are addressing previously unmet primary care, urgent care, psychiatric care, mental health, sexual health, substance use, harm reduction, and other needs.

Since program launch, the four mobile clinics have provided roughly 3,200 clinical visits in over 50 communities across the eight Service Planning Areas.

Mobile Clinic Data

From January 1 through June 30, 2023

- **1,631** patients were served by Mobile Clinic program

Special Initiatives

Special Initiatives: Skid row Action Plan and Encampment Resolution Fund Award language

According to the 2022 Greater Los Angeles Homeless Count, an estimated 4,402 people experiencing homelessness called the 50 square block area that encompasses the Skid Row neighborhood home. Of those individuals, 2,695 were unsheltered. As the epicenter of homelessness in the nation, Skid Row also experiences the highest overdose mortality rate in the County. Acknowledging the importance of creating a healthy and safer community in a neighborhood that has been shaped by decades of structural and systemic inequalities, the Los Angeles County Board of Supervisors passed a motion introduced by Supervisor Hilda Solis in June 2022 to create the Skid Row Action Plan. The plan is a roadmap that aims to dramatically expand housing and other homeless services downtown while supporting the development of a culturally vibrant and thriving Skid Row community.

In June 2023, Housing for Health and partners were awarded a \$60 million state grant to provide housing and services to an estimated 2,500 individuals experiencing unsheltered homelessness on Skid Row. The funding will serve as a catalyst for the Skid Row Action Plan, a \$280 million initiative developed in collaboration with community members, business owners and service providers. The Skid Row community recently gathered for multi-day meetings to further develop the elements of the plan, including interim housing, a Harm Reduction Health Hub, a Safe Services space, additional permanent housing, and an easy-to-access 23/7 healthcare center.

The state grant will fund more than 500 interim housing beds that provide enriched, wraparound services to help individuals with complex health and behavioral health needs. Through the initiative, an estimated 3,000 individuals are expected to receive services, and roughly 2,000 individuals are expected to be permanently housed.

The funding also will create a new Safe Landing facility in Skid Row modeled off of the recently-opened West Athens facility. The new Safe Landing will be open to participants 24/7, facilitating low barrier access to health and behavioral healthcare, interim housing beds, and connections to a host of other resources.



Artist Viola Clark worked with participants in Skid Row Action Plan meetings to create a visual depiction of the community's input into the Skid Row Action Plan.

Safe Landing

Housing for Health opened the first Safe Landing in Los Angeles in January. Located in the West Athens community of South LA, the Safe Landing is an interim housing site that is open 24-hours a day, seven days a week. It is the first of its kind for its “no wrong door” approach to interim housing and clinical and nonclinical support. Someone who is experiencing homelessness can walk in, and outreach teams or law enforcement can bring individuals to the site for clinical assessment and support, and interim housing 24/7.

Safe Landing offers triage beds with clinical staff to support participants with health care and behavioral health services. There are also stabilization interim housing beds for men, women, couples and their pets. The program is operated by Exodus Recovery, Inc., which provides healthcare, mental health services, case management, housing assistance and more. Exodus has partnered with LA Christian Health Centers to provide healthcare and behavioral health services onsite. Housing for Health co-locates its staff onsite to support Exodus in triaging clients and facilitating permanent housing connections.



Staff and participant at Safe Landing.

One of the many special features of the Safe Landing is a garden and fountain, donated by the Cameron Boyce Foundation. The name “Safe Landing” and program design were developed by Housing for Health’s Deputy Director Libby Boyce, who wanted the garden to memorialize her late son, Cameron, who shared her passion for bringing people joy. While permanent housing placements traditionally take 6 to 12 months, Safe Landing West Athens was able to place 20 participants in permanent housing within the first 6 months of opening.

Safe Landing West Athens Outcomes

From January 1 through June 30, 2023

- **768** participants utilized triage beds
- **269** participants utilized stabilization beds in Interim Housing



A bird's eye view of the interim housing building at the Safe Landing.

CLIENT SUCCESS STORY

Family Reconnects After Four Years



With the help of his Safe Landing care management team, Charles reconnects with his sister over video.

the first time via video, he asked where they were living. After she answered that they were in Arizona, he immediately looked up at the team and said, "Can you drive me there?" Through laughter and tears, the team assured him they'd help him any way they could.

"To see his face when he first realized it was his sister was such an emotional moment," said Rian Logan, case manager, Exodus Recovery. "It was clear that he had missed his family, and we were all so happy to have helped them find each other. Charles has been excited to call his family every morning to check in with them and get updates on how they are doing until he's able to see them face to face."

Reconnecting people experiencing homelessness with their families is the ultimate success, especially when the relatives have been searching for their loved one for nearly four years.

When Charles R. was dropped off at Safe Landing's triage unit by a local hospital and staff learned he was autistic, it was immediately clear that making a housing match would require extra sensitivity and consideration. As the team tried to find housing in the area, an interim bed right on site at Safe Landing opened up. The Housing for Health team along with partner, Exodus Recovery, agreed this was the best place for Charles.

Safe Landing, Los Angeles County's new, first-of-its-kind drop-in triage center, clinic and interim housing site, is available 24 hours a day to assist those experiencing homelessness. The staff is ready to do whatever it takes to provide immediate care and connect people to housing and other services.

Charles struggled to recall any of his identifying information, including his Social Security number or any previous addresses. The case management team was at a loss since they couldn't use the standard avenues for acquiring necessary documentation. As a last resort, they decided to see if he had any relatives active on social media.

To their surprise, the team was able to locate Charles' sister, Amber, who had posted on social media repeatedly requesting any information about her missing brother. She had also filed a missing person's report in Arizona in 2019 when she first lost contact with Charles.

The team quickly messaged Charles' sister to reconnect the siblings and arrange a long overdue video call. The short video call left everyone in tears, especially his family because they could now rest assured that their loved one was going to be all right. "We're so grateful to finally find our brother," said Amber. "I can't wait to finally hug him."

As Charles' sister introduced him to his niece and nephew for

Interim Housing Outreach Program

Housing for Health partnered with the Department of Mental Health (DMH) and the Department of Public Health Substance Abuse Prevention and Control (DPH-SAPC) during this reporting period to launch the program development phase of the Interim Housing Outreach Program (IHOP), informed by a community stakeholder engagement process. In the coming months, field-based teams will go into interim housing sites to conduct comprehensive assessments of people with functional disabilities and help connect them to appropriate medical, mental health, behavioral health, and supportive services.

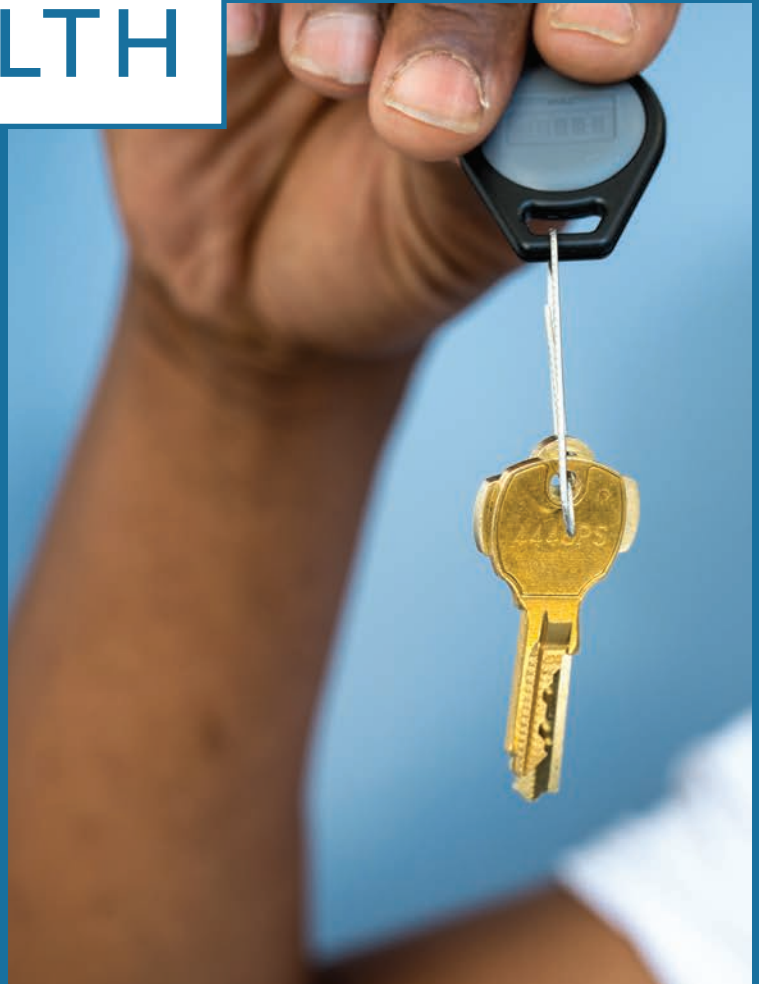


Mary Peña shows her tiny home at the Esperanza Villa Tiny Home Village in Baldwin Park.

This unique partnership is possible because of the support and collaboration of the managed care health plans L.A. Care and Health Net. IHOP is a highway to wellness, designed to help participants get the support they need to thrive in their current interim housing program, or to connect to another setting that better meets their needs. The program will help individuals who struggle with basic activities of daily living, such as bathing, dressing, and cleaning. IHOP teams will include nurse practitioners, registered nurses, occupational therapists, and emergency medical technicians, with additional support from community health workers, social workers, and substance use disorder counselors.



HOUSING
FOR
HEALTH



Capital Improvement Intermediary Program Project List (January 1, 2023–June 30, 2023)

Projects In Progress

No	Project Project Sponsor	Project Type/ Est. Capacity	Population Served	Current Status	Estimated Cost/ Est. Completion
1	WLA Armory DHS	Interim Housing 171 Beds	Single Adults and Couples	Pre-development including architectural and professional services	\$437,000 TBD
2	Santa Clarita BTH Bridge to Home	Interim Housing 80 Beds	Families and Single Adults	Construction	\$500,000 January 2024
3	Santa Fe Springs The Whole Child	Interim Housing 40 Units / 120 beds	Families	Construction	\$7,317,562 October 2024
4	Willow Tree Inn The People Concern	Permanent Housing 100 Units / 100 beds	Single Adults	Construction	\$19,973,300 March 2025

Completed Projects

No	Project/Operator Owner/Partner	Project Type/ Est. Capacity	Population Served	Current Status	Estimated Cost/ Est. Completion
5	Safe Landing Exodus	Clinically Enhanced Interim Housing 172 Beds	Single Adults and Couples	Completed	\$36,271,448 January 2023
6	Jovenes Housing Jovenes	Permanent Housing 8 Units / 8 beds	Transition Age Youth	Completed	\$300,000 July 2023
7	Tropicana Motel HOPICS	Interim Housing 120 Beds	Families	Completed	\$45,000 June 2022
8	628 San Julian (Oasis) JWCH	Recuperative Care 40 Beds	Women	Completed	\$7,838,241 December 2021
9	Covenant House Covenant House	Interim Housing 18 Beds	Transition Age Youth	Completed	\$500,000 August 2021
10	Figueroa HOPICS	Interim Housing 15 Units / 45 beds	Families	Completed	\$43,160 April 2021
11	Long Beach HOPICS	Interim Housing 18 Units / 54 beds	Families	Completed	\$44,780 March 2021
12	Canoga/The Willows LA Family Housing	Interim Housing 70 Beds	Single Adults and Couples	Completed	\$8,032,346 February 2021
13	Paloma/The Lotus Home at Last	Interim Housing 119 Beds	Single Adults	Completed	\$6,750,826 December 2020
14	North Long Beach City of Long Beach	Interim Housing 125 Beds	Single Adults and Families	Completed	\$3,400,000 September 2020

Capital Improvement Intermediary Program Project List (January 1, 2023–June 30, 2023)

Completed Projects (Continued)

No	Project/Operator Owner/Partner	Project Type/ Est. Capacity	Population Served	Current Status	Estimated Cost/ Est. Completion
15	VOALA VOALA	Interim Housing 45 Beds	Single Adults	Completed	\$500,000 August 2020
16	51st Street Motel HOPICS	Interim Housing 18 Units / 54 beds	Families	Completed	\$53,668 August 2020
17	Santa Fe Springs Salvation Army	Interim Housing 24 Beds	Women	Completed	\$850,000 July 2020
18	Kensington Lancaster The People Concern	Interim Housing 156 Beds	Single Adults	Completed	\$6,661,000 July 2020
19	Sylmar Armory/ The Arroyo LA Family Housing	Interim Housing 85 Beds	Women	Completed	\$7,781,341 June 2020
20	Bellflower Homeless Shelter City of Bellflower	Interim Housing 60 Beds	Single Adults and Couples	Completed	\$1,500,000 May 2020
21	627 San Julian (FRAC) The People Concern	C3 Day Center 300 Visits Per Day	Single Adults	Completed	\$4,309,128 May 2020
22	Pomona City of Pomona	Interim Housing 200 Beds	Single Adults	Completed	\$3,800,000 April 2020

Discontinued Projects

No	Project/Operator Owner/Partner	Project Type/ Est. Capacity	Population Served	Current Status	Estimated Cost/ Est. Completion
23	Bell Shelter JWCH	Recuperative Care 100 Beds	Single Adults	Discontinued	\$50,000 N/A
24	Virginia Road HOPICS	Interim Housing 15 Beds	Families	Discontinued	\$50,015 N/A
25	Mount Moriah Housing Development Mount Moriah Baptist Church	Permanent Housing 6 Units	Single Adults	Discontinued	\$263,430 TBD

Other Projects

No	Project/Operator Owner/Partner	Project Type/ Est. Capacity	Population Served	Current Status	Estimated Cost/ Est. Completion
26	LA Motel Brilliant Corners	Interim Housing 35 Beds	Single Adults	Construction	\$883,575 TBD

HOUSING — FOR — HEALTH



Health Services
LOS ANGELES COUNTY

dhs.lacounty.gov/housing-for-health