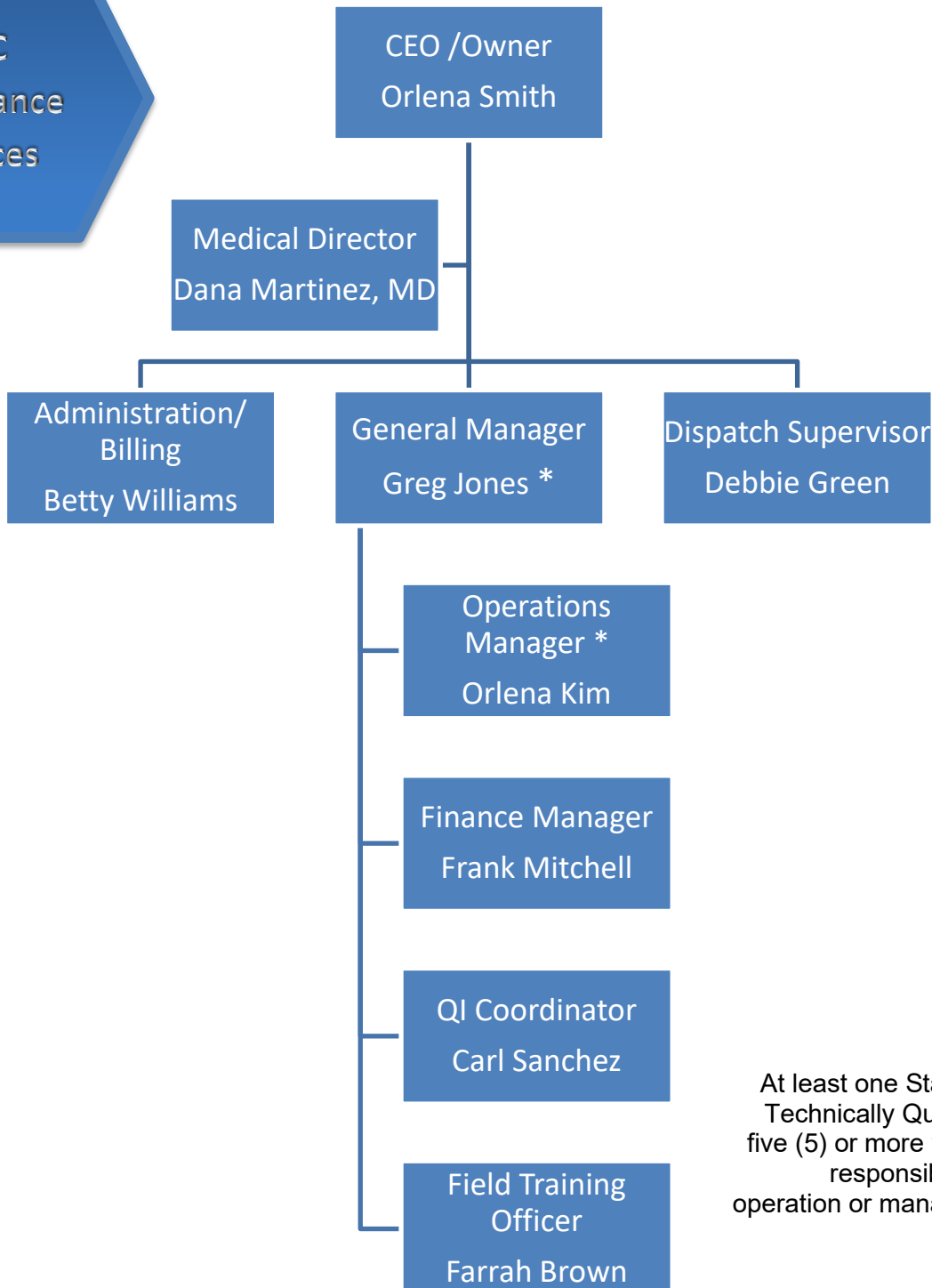


SAMPLE ORGANIZATIONAL CHART

EXHIBIT C



At least one Staff with (*) must be a Technically Qualified Manager with five (5) or more years of increasingly responsible experience in the operation or management of a BLS or ALS service.

Organizational Chart for ABC Ambulance Services is effective as of the date below:

SAMPLE ORGANIZATIONAL CHART

EXHIBIT C

Orlena Smith, CEO/ Owner

DATE