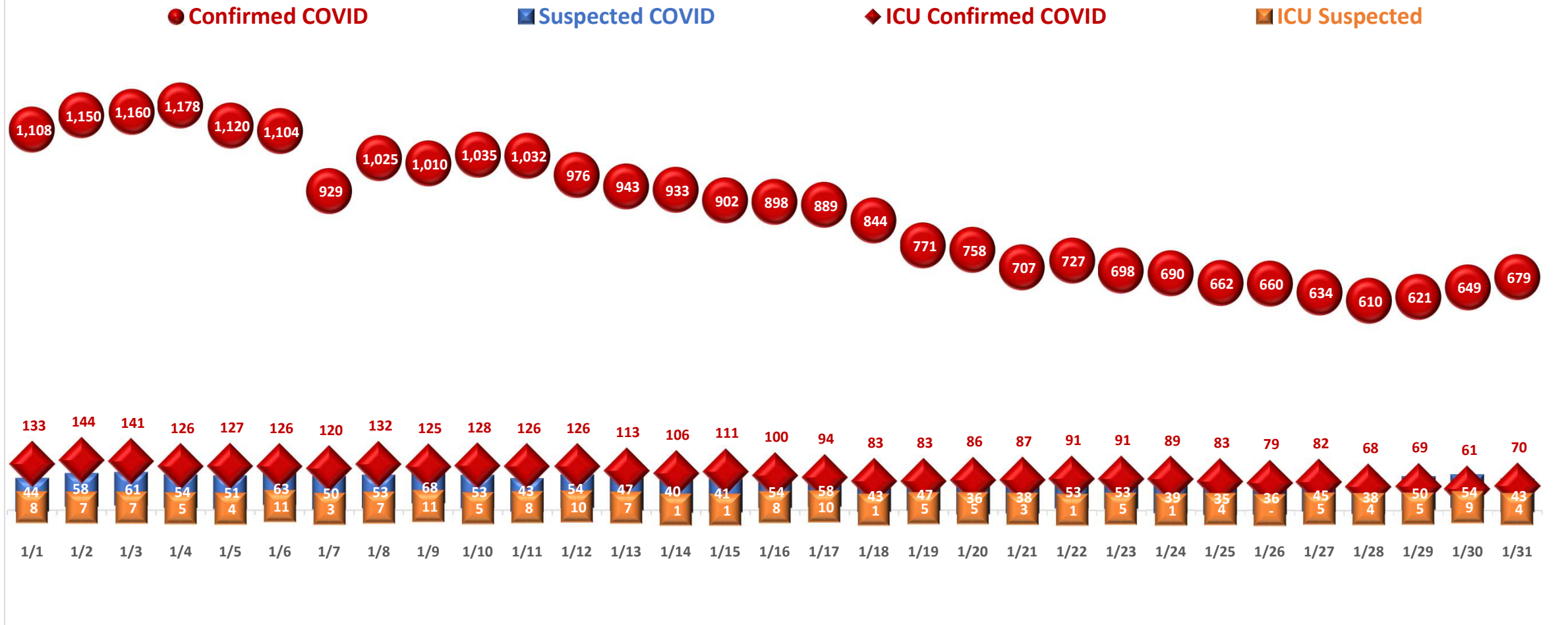


LOS ANGELES COUNTY EMERGENCY MEDICAL SERVICES

DAILY COVID ADMITTED CENSUS (911 Receiving Hospitals)



COVID Confirmed
Suspected COVID

The number of observation patients and inpatients in the hospital who have laboratory-confirmed COVID-19.

The number of observation patients and inpatients in adult beds who are currently under investigation or suspected to have COVID-19. Suspected is defined as a person who is being managed as though he/she has COVID-19 because of signs and symptoms suggestive of COVID-19 as described by CDC’s guidance but does not have a laboratory positive COVID-19 test result. This may include patients who have not been tested or those with pending test results. The count may also include patients with negative test results but who continue to show signs/symptoms suggestive of COVID-19. This should exclude patients for whom the test was sent only as part of routine screening (e.g., for patients being admitted for other diagnoses, prior to diagnostic procedures, or prior to surgery).

ICU Confirmed
ICU Suspected

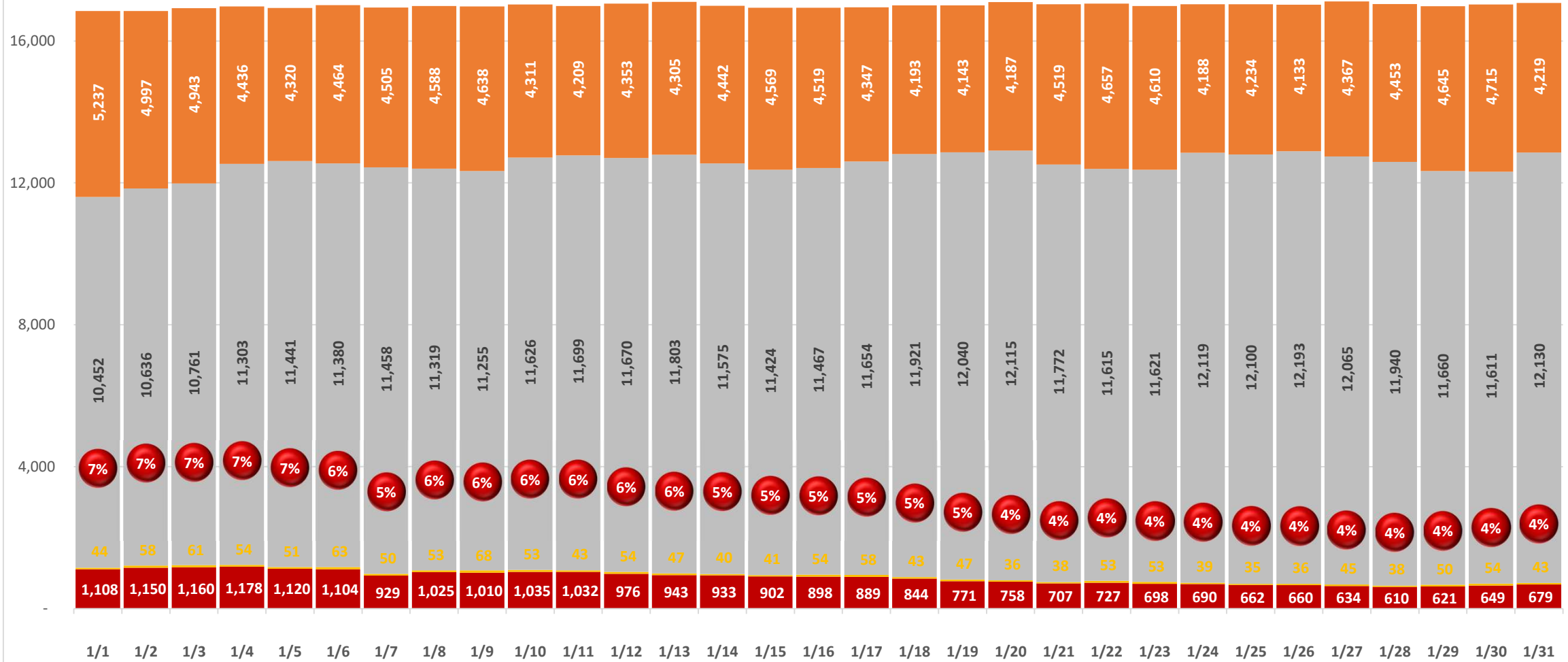
The current number of laboratory confirmed COVID-19 patients occupying ICU beds.

The current number of patients under investigation for suspected COVID-19 occupying ICU beds.

LOS ANGELES COUNTY EMERGENCY MEDICAL SERVICES

DAILY COVID ADMITTED CENSUS (911 Receiving Hospitals)

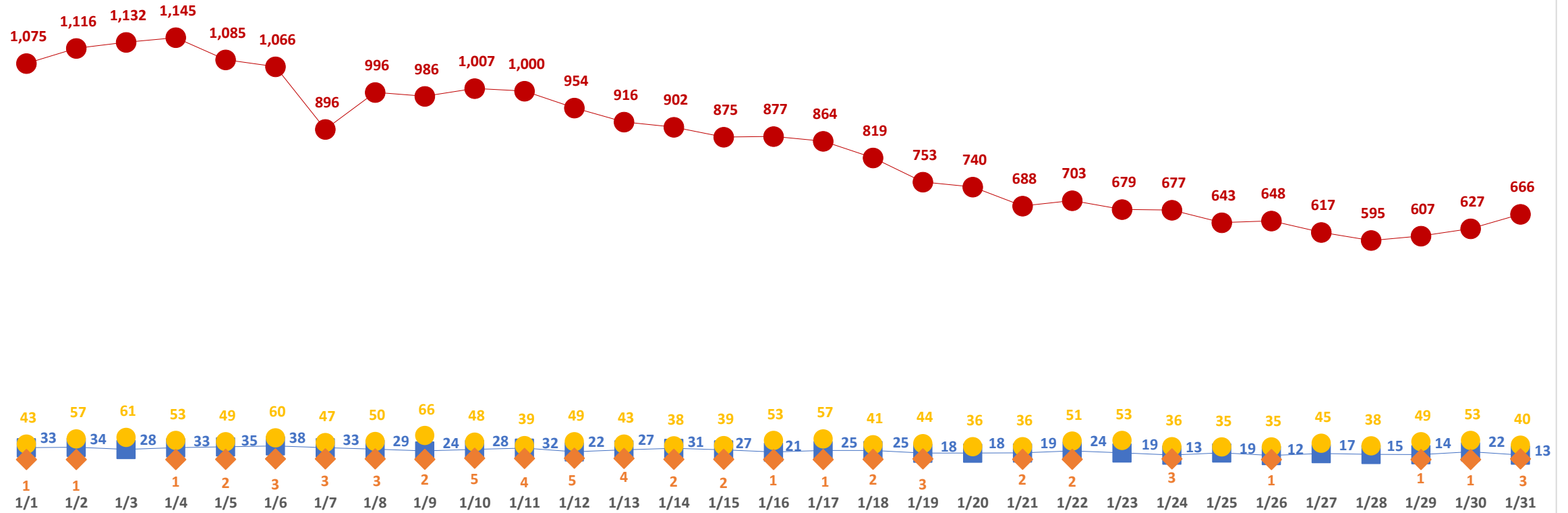
■ **Confirmed COVID**
■ **Suspected COVID**
■ **Non COVID**
■ **Available Beds (Excluding Surge Beds)**
● **% COVID Bed Utilization**



LOS ANGELES COUNTY EMERGENCY MEDICAL SERVICES

DAILY COVID ADMITTED CENSUS (911 Receiving Hospitals)

● **Confirmed COVID ADULTS**
 ● **Suspected Adults**
 ■ **Confirmed COVID PEDS**
 ◆ **Suspected COVID PEDS**



Confirmed COVID Adults

The number of observation patients and inpatients in ADULT beds in the hospital who have a laboratory confirmed COVID -19.

Suspected COVID Adults

The number of observation patients and inpatients in ADULT beds who are currently under investigation or suspected to have COVID-19. Suspected is defined as a person who is being managed as though he/she had COVID-19 because of signs and symptoms suggestive of COVID-19 as described by CDC's guidelines but does not have a laboratory positive COVID-19 test result.

Confirmed COVID Peds

The number of observation patients and inpatients in PEDIATRIC beds (including NICU) in the hospital who have a laboratory confirmed COVID -19.

Suspected COVID Peds

The number of observation patients and inpatients in PEDIATRIC beds (including NICU) who are currently under investigation or suspected to have COVID-19. Suspected is defined as a person who is being managed as though he/she had COVID-19 because of signs and symptoms suggestive of COVID-19 as described by CDC's guidelines but does not have a laboratory positive COVID-19 test result.

LOS ANGELES COUNTY EMERGENCY MEDICAL SERVICES

DAILY ADMISSION OF CONFIRMED COVID FROM PRIOR 24 HOURS (911 Receiving Hospitals)

