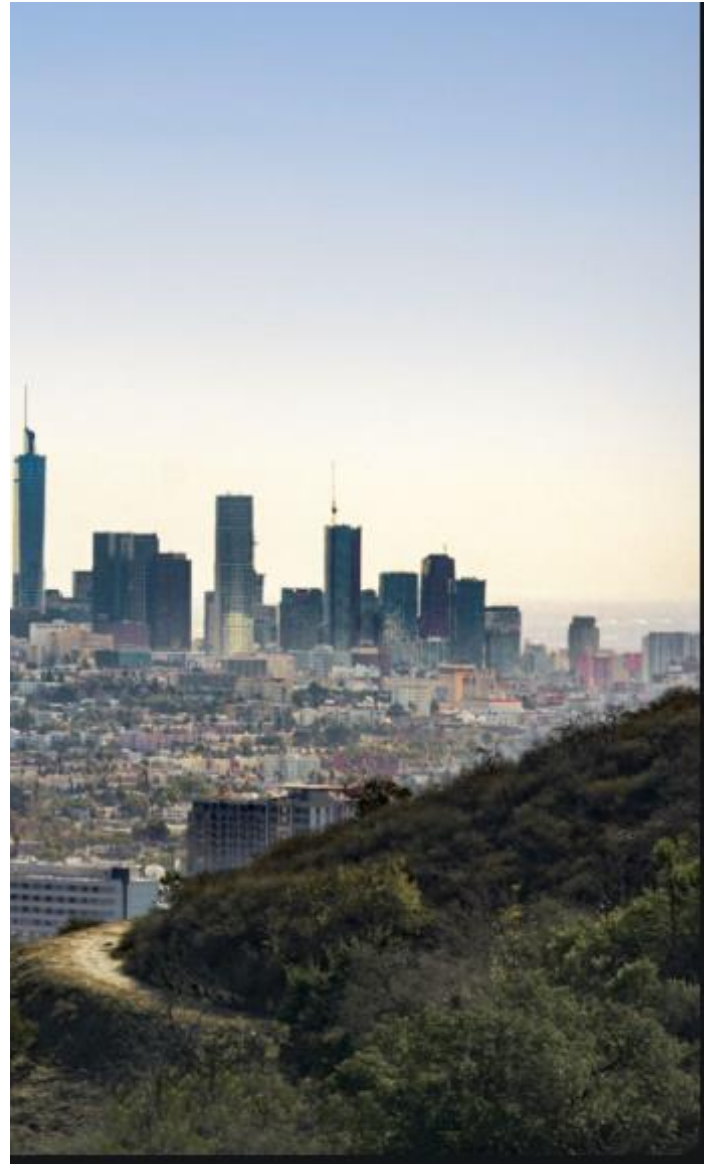

Prop 47 Joint Local Advisory Committee (JLAC) Summary Report

July 2020

On November 4, 2014, California voters passed Proposition 47, a law that changed certain low-level crimes from potential felonies to misdemeanors. The savings from reduced incarceration costs were to be invested into drug and mental health treatment, and other programs.

In 2017 the California Board of State and Community Corrections (BSCC) granted 23 applicants \$103,000,000 to develop programs, including four grantees from Los Angeles city and county. In 2019 the BSCC granted 23 applicants \$96,000,000 to develop programs, including five grantees from Los Angeles city and County.

The Prop 47 Joint Local Advisory Committee is convened by the Los Angeles County Department of Health Services Office of Diversion and Reentry and the Mayor's Office of Reentry, as recipients of Prop 47 funding, and seeks to promote transparency, accountability and collaboration between grantees themselves as well as all stakeholders, centered on those in the community most impacted by the criminal justice system.



JLAC Schedule of Meetings

Summary Report Released (subject to change)	JLAC Meeting Date (subject to change)
July 15, 2020 [Covering program inception to May 30, 2020]	Thursday July 30, 2020, 5-7pm (Zoom)
November 30, 2020	Tuesday January 5, 2021
February 28, 2020	Tuesday March 30, 2021
May 30th, 2020	Thursday July 29, 2021
November 15, 2020	Tuesday November 30, 2021

Summary Reports

This summary is available online at: <http://dhs.lacounty.gov/wps/portal/dhs/diversionandreentry> under “Reentry Division” tab. The timing of our written reports is tied to our reporting schedule with the BSCC. The first report includes data from program inception until March 30, 2020 for the Mayor’s Office and inception to July 12, 2020 for DHS ODR. Future reports will cover 3 months of data.

For all programs, grantees are using a gender and racial equality lens to analyze outcomes. Our goal is for equitable program outcomes across race and gender, meaning that service and outcome demographics match the demographics of eligible participants. We are seeking to compile data to determine the demographic composition of eligible program participants and aim to provide that information to the extent possible for future reports.

Los Angeles County Department of Health Services, Office of Diversion & Reentry

Project Title: Proposition 47 –Reentry Intensive Case Management Services (RICMS), Interim Reentry Housing, Skills and Experience for the Careers of Tomorrow (SECTOR)

Program Summary: The Los Angeles County Department of Health Services Office of Diversion and Reentry will expand reentry-focused intensive case management, housing, and wrap-around services as well as create sector-based employment services and improve health and employment outcomes and reduce recidivism among justice involved individuals with mild to moderate substance use and mental health disorders.

Prop 47 Grant Approved by BSCC	
Grant 1, (June 16, 2017 to August 15, 2021)	\$20,000,000
Grant 2 (August 15, 2019 – May 15, 2023)	\$18,616,627

Planned Expenditures (Combine Grant 1 and 2)	
Reentry Intensive Case Management Program (RICMS) – Began April 2018	\$19,448,474
Interim Housing Program – Began March 2019	\$3,933,790
SECTOR Employment and Training Program – Anticipated to start Quarter 4 of 2020	\$10,808,208
Data Collection and Evaluation -- Began June 16, 2017	\$2,128,040
Staffing and Professional Services -- Began June 16, 2017	\$2,492,721

Program Performance

Program: Interim Housing
Program Description: The twenty-bed house for men, operated by Christ Centered Ministries and managed by ODR provides a safe recovery space for justice-involved individuals enrolled in the Reentry Intensive Case Management Services (RICMS) program. The house opened in March 2020 and services include: Support groups tailored to the needs of the clients around substance use, anger management, life skills such as money management, job readiness and employment support, hygiene, and proper communication skills.
Period of Performance: March 2019 to July 2020
Number of Participants Enrolled: Since the CCM Reentry House opened in March 2019, 47 clients have resided at the site.
Population Served: Clients of RICMS and other ODR reentry services, as needed.
Contracted Service Providers: Christ Centered Ministries
Highlights and Accomplishment since last JLAC: With funds leveraged from other sources, ODR has secured two additional interim housing sites to house RICMS clients.
Challenges since last JLAC: The CCM Reentry House had a COVID-19 outbreak in June. ODR paused referrals to the site until it was safe to refer clients.
Program Data

Race	Number of clients placed in housing by race	Percent of clients placed in housing by race
<i>Black</i>	23	48.9%
<i>Hispanic & Latinx</i>	20	42.6%
<i>White</i>	0	0%
<i>Asian</i>	2	4.3%
<i>American Indian/Alaskan/Native Hawaiian/Pacific Islander</i>	1	2.1%
<i>Data not collected</i>	1	2.1%

Program: Reentry Intensive Case Management Services (RICMS)
Program Description: Care Coordination and Service Navigation program that utilizes Community Health Workers (CHWs) with lived experience to provide case management and peer mentorship. CHWs link clients to various services including but not limited to: mental health, substance use, primary care physicians, housing, employment, benefits establishment, legal, court mandated programs, family reunification, getting IDs, transportation and more.
Period of Performance: July, 2017 - July, 2020
Number of Community Health Workers (CHWs): 101
Caseload Capacity: 3,030 slots (potential active clients)
Active clients: 2,025
Population Served: Adults with an arrest, charge or conviction record with mild to moderate mental health and substance use disorder.
Contracted Service Providers: There are 29 contracted service providers across all 8 County Service Planning Areas.
Highlights and Accomplishment since last JLAC: <ul style="list-style-type: none"> • Developed a system to track service referrals in CHAMP, the DHS database. • Reached milestone of 100 contracted CHWs. • Secured two additional interim housing sites for RICMS clients, one site with 36 beds for men and one with 20 beds for women. • Formalized referral pathway from CDCR to RICMS.
Challenges since last JLAC: <ul style="list-style-type: none"> • COVID-19 has changed service provision, limiting face-to face contact with clients, eliminating in person CHW trainings, and decreasing access to certain services. • COVID-19 has also delayed the incorporation of Moral Recognition Therapy groups to the RICMS service model. • Lost to Follow Up rate for releases from jail have increased since the start of the pandemic because initial outreach is limited to phone calls.

Program Data (Expressed as raw number and %)			
July 2017 - July 2020			
Metric			
<i>Number enrolled by race/ethnicity</i>	Race	Number	Percent
	Black	5,069	36%
	Hispanic & Latinx	5,653	40%
	White	2,604	18%
	Other	895	6%
	Total	14,221	100%
	Gender	Number	Percent
<i>Number enrolled by gender</i>	Male	11,006	78%
	Female	3,017	21%
	Other	198	1%
	Total	14,221	100%
	Number		Percent
<i>Number served (less than 45 days)</i>	6,988		49%
<i>Number served (Between 45 days – 90 days)</i>	3,029		21%
<i>Number served (3 - 6 months)</i>	2,303		16%
<i>Number served (6 - 9 months)</i>	892		6%
<i>Number served (9 months – 1 year)</i>	629		4%
<i>Number served (1year+)</i>	380		3%
Total	14,221		100%

Quantity and Types of Referrals made May 1, 2020-July 12, 2020

In May 2020 the RICMS program rolled out a new process for tracking service referrals within their database. This allows for greater insight on the types and quantities of referrals made. Because this is a new process, referrals made before May 1, 2020 are not fully captured. In the table below “Total Service Referrals” shows the total number of referrals made and recorded in the database by RICMS CHWs between May 1t and July 12, 2020. In total, 1,635 referrals were made for 613 individuals.

Total Service Referrals	1,635
Individual Clients Served	613

Referral Categories	Number	Percent
<i>Assistance with Food</i>	403	24.6%

<i>Basic Necessities (Clothing, Hygiene Kit, Phone Charger, etc.)</i>	98	6.0%
<i>Education</i>	26	1.6%
<i>Employment</i>	133	8.1%
<i>Housing</i>	242	14.8%
<i>Legal Services (ID Cards, Record Expungement, etc.)</i>	130	8.0%
<i>Mental Health</i>	68	4.2%
<i>Other Supportive Services</i>	239	14.6%
<i>Social Services (CalFresh, Medi-Cal, etc.)</i>	119	7.3%
<i>SPDAT</i>	7	0.4%
<i>Substance Use</i>	57	3.5%
<i>Transportation (Gas Cards, Ride Share Rides, etc.)</i>	109	6.7%
<i>Voter Education</i>	1	0.1%
<i>Voter Registration</i>	3	0.2%

Program: SECTOR
Period of Performance: Expected to launch Quarter 4 2020
Population Served: Prop 47 eligible individuals from Los Angeles County who are interested in pursuing career pathways.
<p>Program Description: The purpose of the Skills and Experience for the Careers of Tomorrow (SECTOR) Program is to offer career pathway opportunities and family-sustaining wages for people impacted by the justice system. The SECTOR Program is aimed at: 1) reducing unemployment and increasing earnings; 2) reducing recidivism; and 3) improving behavioral health and well-being by preparing and matching people with justice involvement to jobs in high-growth industries.</p> <p>The goal is to expand upon the employment and training options that are currently available (such as in Construction Trades and Hospitality), and forge pathways into new sectors (such as Technology and Healthcare) with opportunities that pay well with good benefits and offer advancement.</p> <p>Core program components include:</p> <ul style="list-style-type: none"> • Skills training that results in industry-recognized, stackable credentials and/or paid work experience that provides participants with real-world experience, skills, and connections that lead to a permanent, unsubsidized job with an employer. • Career coaching and job matching services to prepare and place participants into unsubsidized positions with employers.

-
- Financial assistance provided to participants in the form of wages from paid work experience programs, stipends during skills training sessions, and/or assistance accessing public benefits and other resources to ensure that participants have financial support and stability while they are enrolled in the program.
 - Connection to supportive services including mental health and substance use disorder counseling if needed.
 - Cognitive behavioral intervention (CBI) group sessions to prevent recidivism and build problem-solving skills to prepare participants for success in the workplace and continued advancement in their career path.

Highlights and Accomplishment since last JLAC:

- A competitive work order solicitation for SECTOR proposals was released on February 13, 2020. Due to COVID-19, the deadline for responses was pushed to May 15, 2020, to allow applicants more time to complete their proposals.
- Responses are currently under review by a DHS review committee. ODR anticipates announcing selected applicants by September and launching the program in Quarter 4 of 2020.

Los Angeles Mayor's Office of Economic Opportunity, Office of Reentry

Project Title: Proposition 47 Project impact

Program Summary: Project imPACT serves formerly incarcerated individuals by providing employment services in tandem with peer support, legal services, and behavioral health services. Program participants, called Fellows, receive wrap around services holistically by a multi-disciplinary team that consists of: a Peer Navigator with a history of justice-involvement; an Attorney to address collateral consequences of justice-involvement; and a Counselor to provide individual and group-based therapy. Project ImPACT combines employment services with evidence-based practices that specifically serve formerly incarcerated individuals, to increase the program participant's chances to successfully obtain and retain employment.

Prop 47 Grant Approved by BSCC	Total Granted
Grant 1, (June 16, 2017 to August 15, 2021)	\$5,998,384
Project imPACT Planned Expenditures: - Service Provider Contracts - Data Collection/Evaluation - Staffing	\$4,725,908 \$511,422 \$761,054
Grant 2 (August 15, 2019 – May 15, 2023)	\$5,999,304
Project imPACT Planned Expenditures: - Service Provider Contracts - Data Collection/Evaluation - Staffing	\$4,914,632 \$505,000 \$579,672

Program Performance

Project Title: Project imPACT
Project Period of Performance: June 16, 2017 to March 31, 2020
Number of Participants Enrolled: 412
Population Served: 1,235
Contracted Service Providers: 9
Highlights and Accomplishment since last JLAC: Project imPACT received BSCC approval to enhance existing services by offering subsidized shared housing units within its current budget. Project

imPACT performance goal will include a new metric to house 20 Fellows who are employed each remaining program year.

Challenges since last JLAC: The sharp transition to virtual services during mandatory social distancing due to the Covid-19 pandemic; limited technology access for program participants.

Performance Goals

Metric	Performance Indicator (Goal)	Performance Outcome	Performance Outcome/ Performance Goal	Percentage Rate Actual Achievement
<i>Number of Fellows Served</i>	420	1,253	3 times goal	300%
<i>Number of Fellows Enrolled</i>	198	424	2.1 times goal	210%
<i>Number of Fellows placed in permanent jobs</i>	200	97	49% of goal	49%

Demographic Distribution of Project imPACT Participant Outcomes June 12, 2017- March 30, 2020

Race/Ethnicity	Number of Participants Served	Number of Participants Enrolled	Placement in permanent jobs
Black or African American	673	228	57
Hispanic & Latinx	446	151	28
White	99	33	8
Other	35	12	4
Gender			
Female	282	95	21
Male	964	327	74
Other	7	2	1
Total	1,253	424	97