

LANDSCAPE PROJECT LIMIT: FIJI WAY FROM LINCOLN BLVD. TO TERMINUS

PROJECT LENGTH: 4,700 FEET

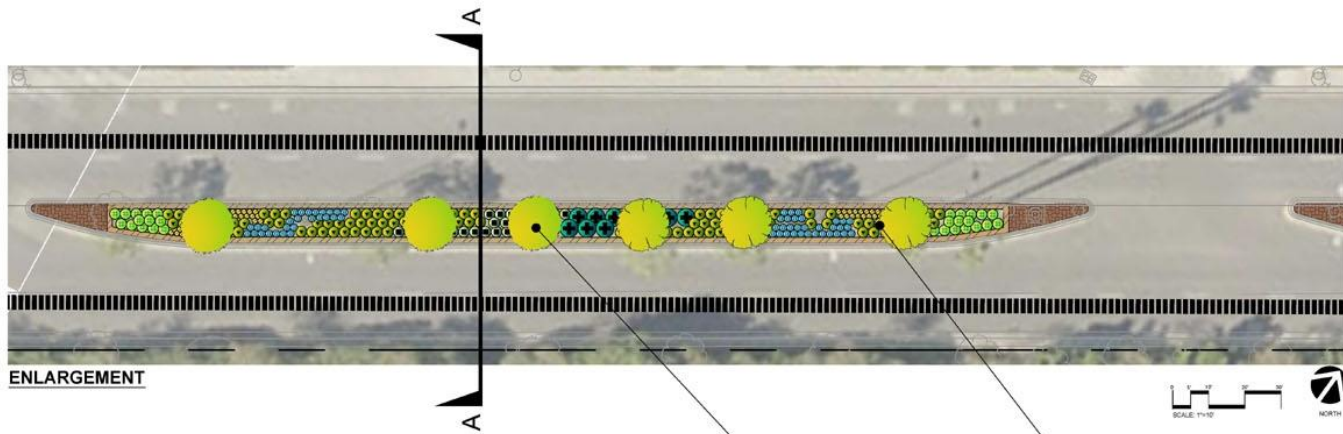
PROJECT SCOPE:

- REMOVAL OF EXISTING VEGETATION IN THE MEDIAN
- CONSTRUCTION OF 18" WIDE MAINTENANCE STRIP USING INTEGRAL COLORED CONCRETE
- CONSTRUCTION OF DECORATIVE PAVING AREAS USING COLORED CONCRETE UNIT PAVERS
- CONSTRUCTION OF AUTOMATIC IRRIGATION SYSTEM
- PLANT STREET TREES, SHRUBS AND GROUNDCOVERS
- PROVIDE ELECTRICAL CONDUITS FOR FUTURE HOLIDAY LIGHTING

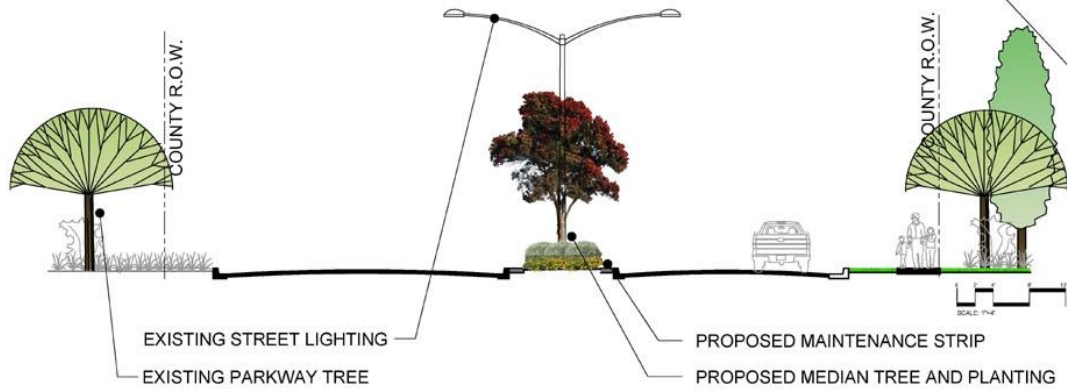
FIJI WAY CONCEPT PLAN

MARINA DEL REY





SECTION AA



ARBUTUS 'MARINA'
STRAWBERRY TREE

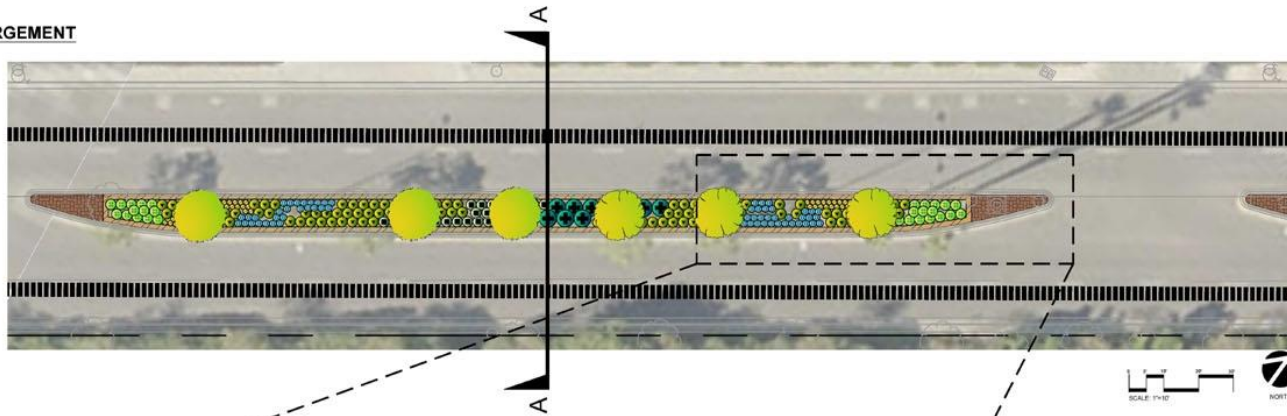


METROSIDEROS EXCELSUS
NEW ZEALAND CHRISTMAS TREE

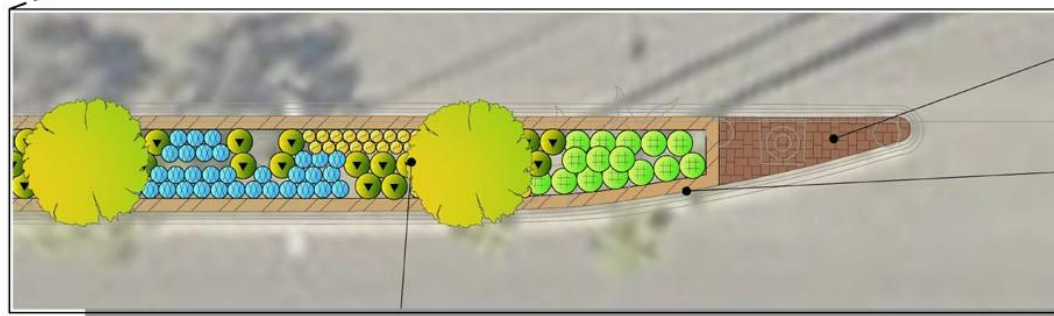
FIJI WAY MEDIAN TREE PLANTING ENLARGEMENT

MARINA DEL REY

ENLARGEMENT



SECTION AA



PROPOSED MEDIAN TREE



CONCRETE UNIT PAVER
(ORCO, TERRA VERDE)



MEDIAN NOSE AND
MAINTENANCE STRIP: INTEGRAL
COLORED CONCRETE PAVING
(SCOFIELD C-25, SOMBRERO
BUFF)

FIJI WAY MEDIAN PAVEMENT ENLARGEMENT

MARINA DEL REY



METROSIDEROS EXCELSUS
NEW ZEALAND CHRISTMAS TREE



ARBUTUS 'MARINA'
STRAWBERRY TREE



ACHILLEA 'MOONSHINE'
YELLOW YARROW HYBRID



CEANOTHUS GRIS. HORIZ 'YANKEE POINT'
CARMEL MOUNTAIN LILAC



LANTANA
DWARF YELLOW TRAILING LANTANA



PHORMIUM HYBRID 'DUET'



SENECIO MANDRALISCAE
BLUE CHALK STICKS



WESTRINGIA F. 'MORNING LIGHT'
MORNING LIGHT COAST ROSEMARY

	BOTANICAL NAME	COMMON NAME	SALT TOLERANT	EVERGREEN	DESIGN STANDARD TREE LIST	DROUGHT TOLERANT PLANT LIST	MATURE HEIGHT = 12-20'	MATURE HEIGHT = 30-50'
TREES	<i>METROSIDEROS EXCELSUS</i>	NEW ZEALAND CHRISTMAS TREE	●	●	●	●	●	●
	<i>ARBUTUS 'MARINA'</i>	STRAWBERRY TREE	●	●	●	●	●	●
SHRUBS	<i>ACHILLEA 'MOONSHINE'</i>	YELLOW YARROW HYBRID	●	●	●	●	●	●
	<i>CEANOTHUS G. H. 'YANKEE POINT'</i>	CARMEL MOUNTAIN LILAC	●	●	●	●	●	●
	PHORMIUM HYBRID 'DUET'	NCN	●	●	●	●	●	●
	<i>WESTRINGIA F. 'MORNING LIGHT'</i>	COAST ROSEMARY	●	●	●	●	●	●
GROUND COVER	<i>LANTANA HYBRID 'DWARF YELLOW'</i>	DWARF YELLOW TRAILING LANTANA	●	●	●	●	●	●
	<i>SENECIO MANDRALISCAE</i>	BLUE CHALK STICKS	●	●	●	●	●	●

SALT TOLERANT
EVERGREEN
DESIGN STANDARD TREE LIST
DROUGHT TOLERANT PLANT LIST
MATURE HEIGHT = 12-20'
MATURE HEIGHT = 30-50'

FIJI WAY MEDIAN TREE/PLANT PALETTE

MARINA DEL REY

