



# LA COUNTY REGIONAL SHORELINE MONITORING PROGRAM

## PLAN

Coastal Frontiers Corporation  
882A Patriot Drive  
Moorpark, CA 93021  
(818) 341-8133 | [www.coastalfrontiers.com](http://www.coastalfrontiers.com)

# LA COUNTY REGIONAL SHORELINE MONITORING PROGRAM

## PLAN

### Document Information

CFC project number	CFC-1240
Client	County of Los Angeles, Department of Beaches & Harbors
Document title	LA County Regional Shoreline Monitoring Program Plan
Prepared by	Coastal Frontiers Corporation
Collaborators	
Status	Final

Revision	Description	Date	Issued by	Reviewed by	Principal Approval
00	Draft to Client	29 July 2025	L. Dodds	G. Hearon	G. Hearon
01	Final to Client	28 August 2025	L. Dodds	E. Innes	G. Hearon

## Contents

Contents .....	ii
List of Tables .....	ii
List of Figures .....	ii
1 Regional Shoreline Monitoring Program Overview .....	3
2 Beach Profile Transect Locations .....	5
3 Beach Profile Data Acquisition .....	6
3.1 Methods.....	6
3.2 Quality Control.....	7
3.3 Data Products.....	7
3.4 Beach Access Permits/Notifications.....	8
4 Annual Report .....	9
4.1 Historical Data Retrieval .....	9
4.2 Beach Metrics.....	10
4.3 Observations .....	10
Attachment A .....	11

## List of Tables

Table 1. Entities to Be Notified Prior to Field Activities .....	8
--	---

## List of Figures

Figure 1. Beach Profiles in Oceanside, CA .....	4
Figure 2. Beach Profile Transect Location Map.....	5
Figure 3. Illustration of Mean High Water (MHW) Beach Width .....	10

# LA COUNTY REGIONAL SHORELINE MONITORING PROGRAM

## PLAN

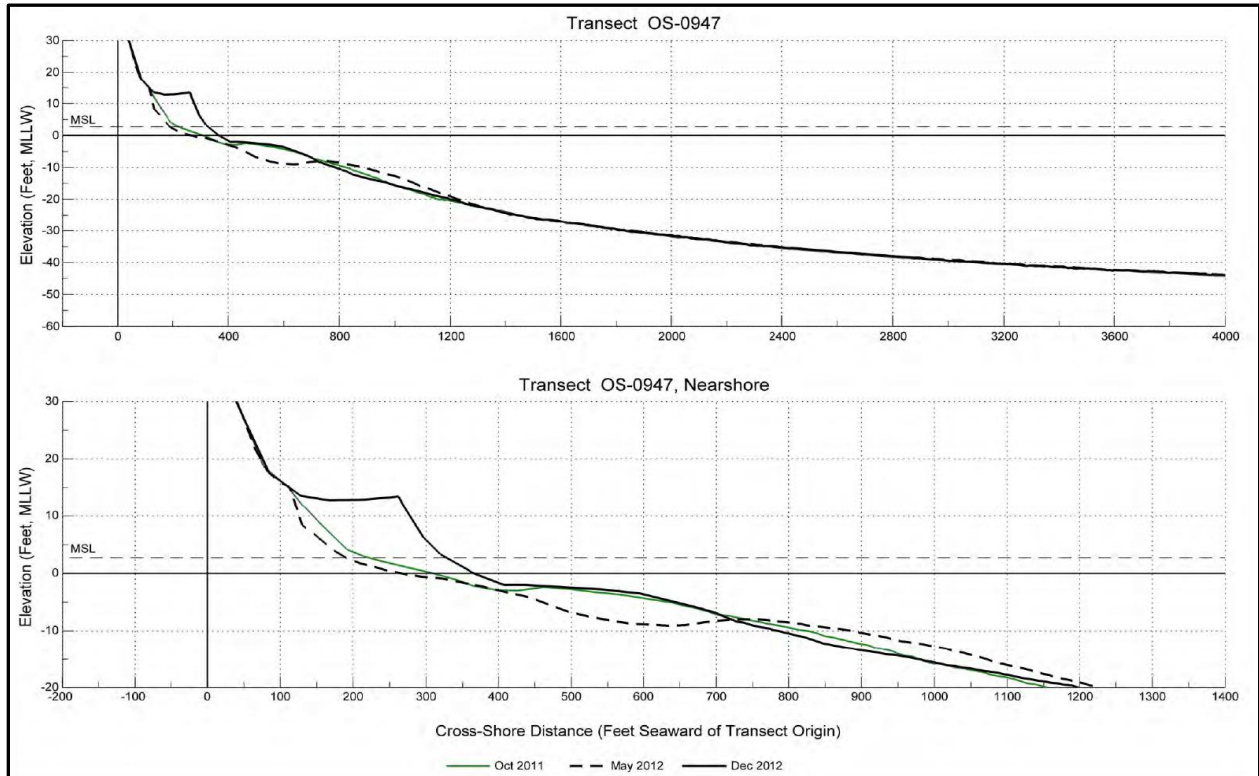
### 1 Regional Shoreline Monitoring Program Overview

The Los Angeles County Department of Beaches and Harbors (LACDBH) is leading an initiative to advance regional coastal resiliency by building a coalition of stakeholders, establishing a shoreline monitoring program, and developing a Regional Coastal Resiliency Strategic Adaptation Plan (RCSAP).

The RCSAP includes funding to establish the Regional Shoreline Monitoring Program (“Program”). Similar programs are conducted elsewhere in southern California (*e.g.*, SANDAG has performed a monitoring program for San Diego County consistently since 1996). The RCSAP funding encompasses establishment of the Program, a Fall 2025 survey, and a Spring 2026 survey. Funding will be sought to continue the Program beyond Spring 2026.

The general objective of the Program is to build a sustainable database of nearshore beach changes in LA County between Leo Carrillo State Beach and Torrance Beach, thereby providing a basis for evaluating the impacts of natural events (*e.g.*, El Niño conditions or sea level rise) and human intervention (*e.g.*, beach nourishment). The data will inform decision makers on shoreline conditions, support the technical basis of grant applications, and provide the foundation for post-project monitoring.

The Program will consist of fall and spring beach profile surveys, which document the beach condition at the beginning and end of the winter wave season. A beach profile depicts the cross-shore configuration of the beach and nearshore area at a specific point in time. The beach profile data will extend from landward limit of the sandy beach, offshore to beyond the depth of closure (the seaward boundary of the active coastal zone where sand movement under the influence of waves and currents is negligible or non-existent). The beach profile data will be used to evaluate changes and trends in beach width and sand volume. An example beach profile from the SANDAG program is provided in Figure 1.



**Figure 1. Beach Profiles in Oceanside, CA<sup>1</sup>**

Beach profile data have been obtained at Los Angeles County beaches by multiple agencies dating back to 1935. Historical survey data exist for 1935, 1946, 1953, 1989, 1990, and 2002 through 2005. There are 437 historical survey transects between Leo Carillo State Beach and Redondo Beach. However, the number of transects included as part of each survey has varied.

The current Regional Shoreline Monitoring Program will include 85 of the 437 previously-established transects. Access to the beach near the Palisades Fire disaster area is currently impaired due to public beach access closures, heavily-eroded beaches, and health and safety hazards (potential debris and water quality). As such, six transects within that region will not be surveyed in Fall 2025. This region will be re-evaluated in Spring 2026, and data will be obtained if conditions warrant.

<sup>1</sup> SANDAG, 2025, Regional Shoreline Monitoring Program, <https://www.sandag.org/projects-and-programs/environment/shoreline-management/monitoring-program>

## 2 Beach Profile Transect Locations

The subset of 85 transects was selected in order to balance the inclusion of invaluable historical data, spatial data coverage, and total program cost. Comparison of contemporary and historical data will enable analyses of beach change and trends across the County.

Historical coordinates for nine survey control monuments and 437 transects were documented in 2005 by Fugro West, Inc.<sup>2</sup> The survey transects selected for the current Program were chosen from those previously established 437 transects, and will be reoccupied by KDM Meridian using contemporary survey techniques (shown in Figure 2 and Attachment A).

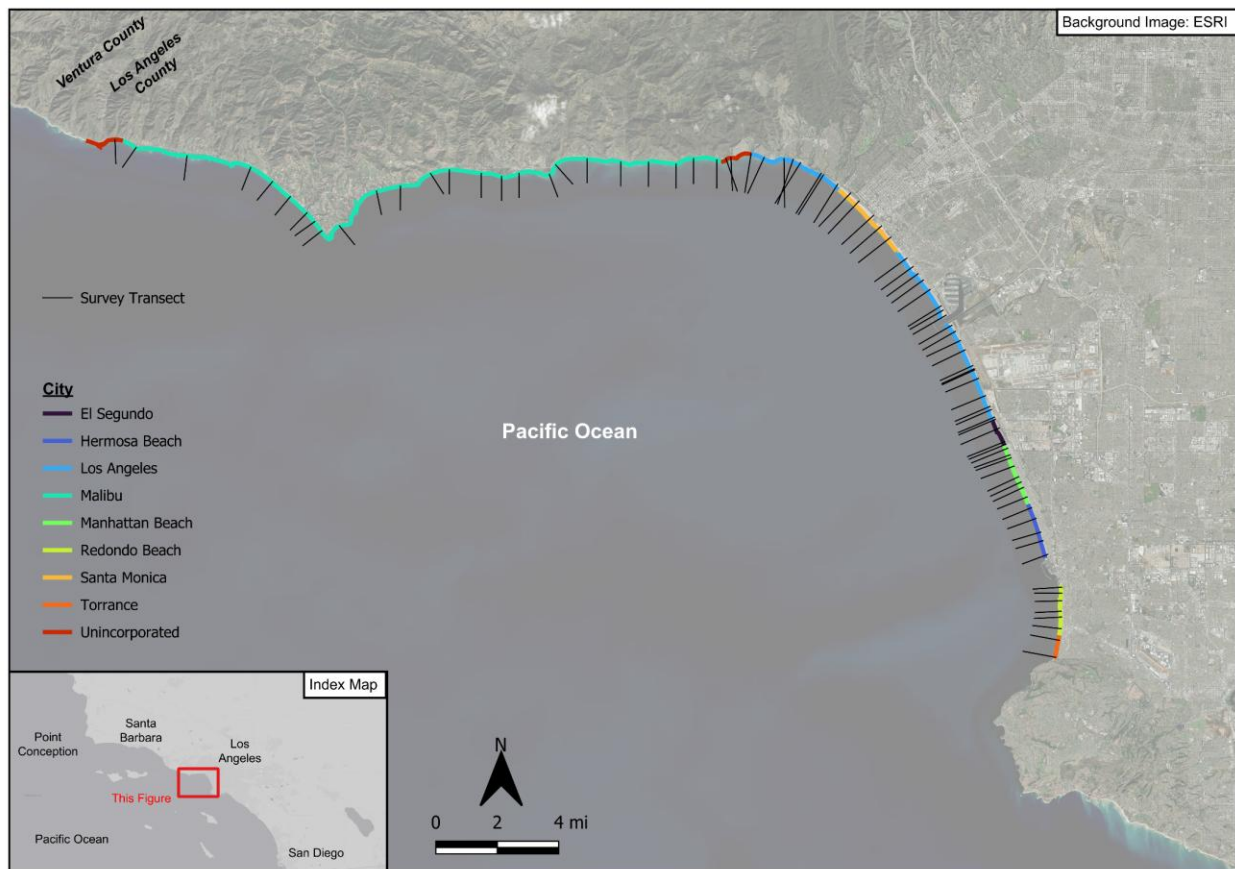


Figure 2. Beach Profile Transect Location Map

<sup>2</sup> Fugro West, Inc., 2005, "Report of Los Angeles County June 2005 Beach Profiles and Hydrographic Survey, DACW09-00-D-0023 Task Order No. 0006, Modification No. 7", 162 pp.

### 3 Beach Profile Data Acquisition

As indicated in Section 1, the general objective of the Regional Shoreline Monitoring Program is to detect changes in the condition of the active coastal zone in Los Angeles County. Beach profile data will be obtained along 79 of 85 transect in Fall 2025 as a result of the access restrictions and health and safety concerns within the Palisades Fire disaster area. The transects included in the Spring 2026 survey will also include the same 79 transects with the remaining six dependent upon the state of accessibility and health and safety status at the time of the survey. Transect locations are shown in Figure 2 and Attachment A.

Beach profile surveys will be conducted in Fall 2025 and Spring 2026. The sand elevation will be measured along each transect from the landward limit of the beach seaward to a depth of 45 ft below MLLW for all transects except those to the south of King Harbor (Transects 032 to 002), which will be surveyed to a depth of 60 ft below MLLW.

#### 3.1 Methods

Three independent crews will concurrently collect beach profile data along each transect:

1. The dry beach will be surveyed by KDM Meridian using a Real Time Kinematic Global Navigation Satellite System (RTK GNSS) rover with differential corrections provided by the California Real Time Network (CRTN). In addition, a geodetic position and reference azimuth will be established at each transect for use by Coastal Frontiers' total station operator.
2. The surf zone will be surveyed by Coastal Frontiers utilizing an electronic total station and swimmer equipped with a survey rod. The total station will be used to measure the position and elevation at each location occupied by the swimmer. The seabed along each transect will be surveyed from the shoreline through the surfzone until the rod no longer protrudes above the water surface. To the extent possible, data from the total station will overlap with the other crew's data to ensure compatibility between the three crew's datasets.

The raw total station data will be processed with software developed by Spectra Precision, and the coordinates and elevation data of each point will be calculated.

3. A survey vessel equipped with single-beam sonar will be used to measure the position and elevation of the seabed along each transect, beginning at the 45-ft isobath (60-ft at Transects 032 to 002) and ending at the seaward edge of the surfzone. The single-beam echo sounder and survey-grade transducer (9° beam width) will measure the depth on a continuous basis. A dual antenna GNSS receiver with real-time differential corrections from the Wide Area Augmentation System (WAAS) will provide vessel heading and positioning data at 2 Hz with interpolated positions assigned to the soundings acquired

between position fixes. Vessel motion will be recorded using an integrated GNSS/Inertial Navigation System (INS). All systems will be interfaced to a laptop computer using Hypack hydrographic survey software. A speed-of-sound profiles will be obtained periodically in the survey area using a conductivity, temperature, and depth profiler (CTD). The calibration of the echo sounder will be checked at the beginning and end of the survey using a standard “bar check” procedure.

The raw vessel motion data will be post-processed and applied to the raw soundings in Hypack. The soundings will be edited for outliers, corrected for the speed-of-sound in the water column and vessel motion, and then adjusted to the Mean Lower Low Water (MLLW) datum using water levels measured by the National Oceanic and Atmospheric Administration (NOAA) at Santa Monica, CA (Station ID 9410840)<sup>3</sup>. The GNSS-derived positions will be adjusted to the project datum using the National Geodetic Survey (NGS) Coordinate Conversion and Transformation Tool (NCAT)<sup>4</sup> and to the project datum epoch using the NGS Horizontal Time-Dependent Positioning (HTDP) tool<sup>5</sup>. The adjusted soundings will be thinned to a nominal horizontal spacing of 10 ft, with no bias used in the thinning process.

### **3.2 Quality Control**

The data from all three crews will be scrutinized in the regions of overlap through statistical analysis. Once this confirmatory inspection has been completed, the more representative data in the region of overlap will be retained, and the other purged. The three datasets will then be merged to create a composite points file.

### **3.3 Data Products**

Georeferenced survey points for the entire survey will be provided in northing, easting, elevation format (\*.nez). The range and elevation of each survey point will be measured with respect to the appropriate transect alignment, and used to create a beach profile data file (\*.bpd) for each transect. The beach profile data files will be used to develop beach profile plots.

---

<sup>3</sup> NOAA, 2025, Observed Water Levels at 9410840, Santa Monica, CA, <https://tidesandcurrents.noaa.gov/waterlevels.html?id=9410840>

<sup>4</sup> NGS, 2025, NGS Coordinate Conversion and Transformation Tool (NCAT), <https://www.ngs.noaa.gov/NCAT/>

<sup>5</sup> NGS, 2025, HTDP - Horizontal Time-Dependent Positioning, <https://www.ngs.noaa.gov/TOOLS/Htdp/Htdp.shtml>

### 3.4 Beach Access Permits/Notifications

LACDBH Right of Entry (ROE) permit RE-355-25 has been acquired by Coastal Frontiers and KDM Meridian (Attachment B). The permit authorizes access to the County-managed beaches, the use of four All-Terrain Vehicles (ATV) and/or Utility Terrain Vehicles (UTV) on the beach, and a survey vessel seaward of the surfzone.

Prior to field activities, a notification will be made to the LACDBH ROE Permit Administrator, Operational Services, and Lifeguards (Table 1). The notification will describe the field activities and schedule. These parties will then notify all appropriate personnel.

**Table 1. Entities to Be Notified Prior to Field Activities**

Organization	First Name	Last Name	Position
LA County Department of Beaches and Harbors, Operational Service Division	John	Skinner	North District Manager
	Darryl	Pittman	Central District Manager
	Steven	Christopher	South District Manager
LA County Fire Department, Lifeguard Division	Fernando	Boiteux	Chief
LA County Department of Beaches and Harbors, Right-of-Entry Permit Administrator	Amir	Tadros	Right of Entry Permit Administrator
LA County Department of Beaches and Harbors	Bertha	Ruiz-Hoffmann	Coastal Resiliency Section Manager
	Emiko	Innes	Coastal Resilience Project Manager

## 4 Annual Report

Following the Spring 2026 beach profile survey, a concise report will be prepared describing the methods and results of the Fall 2025 and Spring 2026 surveys. The report will include beach profile plots illustrating the Fall 2025 and Spring 2026 profiles, as well as selected historical profiles. Tabulated values of Mean High Water beach widths derived from the profile data will be included. An assessment of beach width changes will be provided for those transects selected for the current monitoring program.

### 4.1 Historical Data Retrieval

As indicated in Section 1, historical survey data exist for 1935, 1946, 1953, 1989, 1990, and 2002 through 2005. Coastal Frontiers has assembled a partially-complete archive of those historical data <sup>6</sup>. Those data reference a prior epoch of MLLW. A vertical adjustment will be made from MLLW (1960-1978 National Tidal Datum Epoch) to MLLW (1983-2001 National Tidal Datum Epoch, i.e. the vertical datum for the current monitoring program) for the sake of data comparability.

Many beach profile data from the 1935 through 1990 period have not been recovered in digital format, but exist in hardcopy <sup>7</sup>. Those data may be reproduced through digitization; however, that task will be performed only to the extent permitted by the available budget.

Beach profile survey data collected between 2002 and 2005 were acquired by Fugro West, Inc. on behalf of the USACE Los Angeles District, and made available to Coastal Frontiers by the USACE. Those data exist as georeferenced survey points, and require processing to derive beach profile data (\*.bpd) files by measuring the range and elevation of each point along the respective transect alignment. This task will be pursued for select transects and dates as permitted by the available budget.

In addition, beach profile data have been collected at several LA County beach monitoring transects in the Zuma Beach area on behalf of the Broad Beach Geohazard Abatement District (BBGHAD). That data record spans from 2009 to 2023. Permission to use these data will be sought. No adjustment is needed to incorporate the BBGHAD data into the current Program.

---

<sup>6</sup> USACE, 2022, Personal correspondences from J. Ryan, December 2022 to January 2023.

<sup>7</sup> Coastal Frontiers Corporation, 1990, "Historical Changes in the Beaches of Los Angeles County - Malaga Cove to Topanga Canyon, 1935-1990", Chatsworth, CA, 33 pp. + app.

## 4.2 Beach Metrics

### 4.2.1 Mean High Water Beach Width

Mean High Water (MHW) beach width is calculated as the horizontal distance along the transect alignment from the landward limit of the beach sand to the point at which the beach profile intersects the plane of the MHW datum (Figure 3). While the survey data will be collected relative to Mean Lower Low Water (MLLW), Mean High Water was adopted as the shoreline reference in the belief that it provides a more accurate indicator of changes in beach configuration.

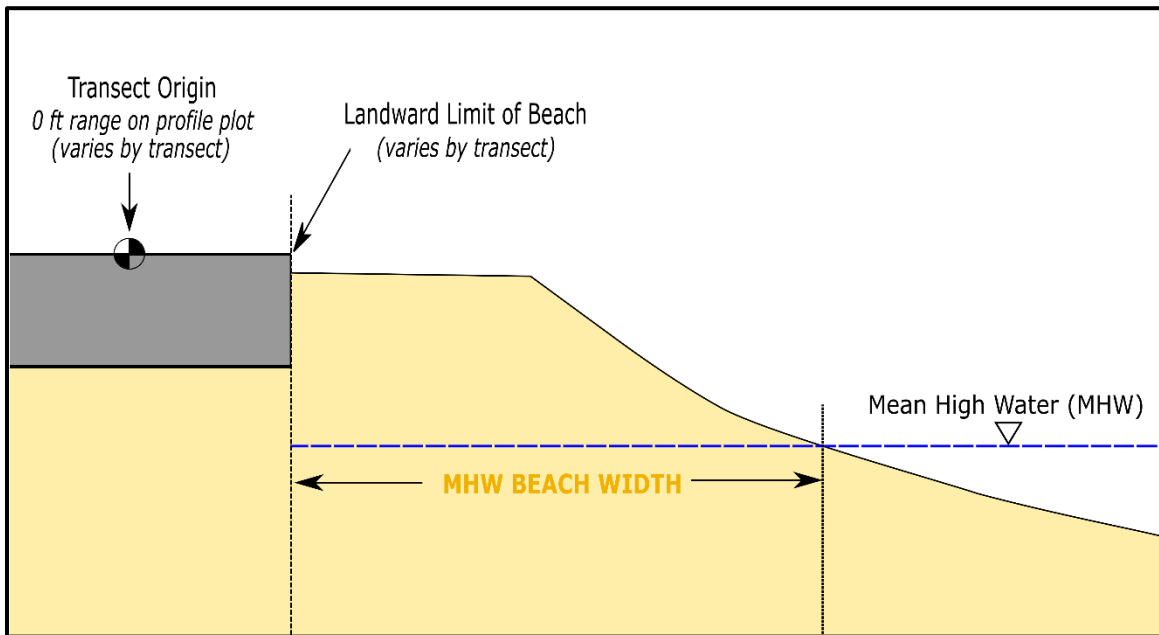


Figure 3. Illustration of Mean High Water (MHW) Beach Width

### 4.2.2 Mean High Water Beach Width Change

Short- and long-term MHW beach width change will be assessed based on data availability. These changes will be provided in tabular and graphical form. The goal of this beach width assessment is to identify the existing conditions and historical trends in coastal change along the County's coastline.

## 4.3 Observations

The condition of the County's beaches will be summarized based on the beach profile data and MHW beach widths. It is anticipated that beaches will be evaluated both regionally and as a series of selected sub-reaches.

## **Attachment A**

### **Transect Location Maps**

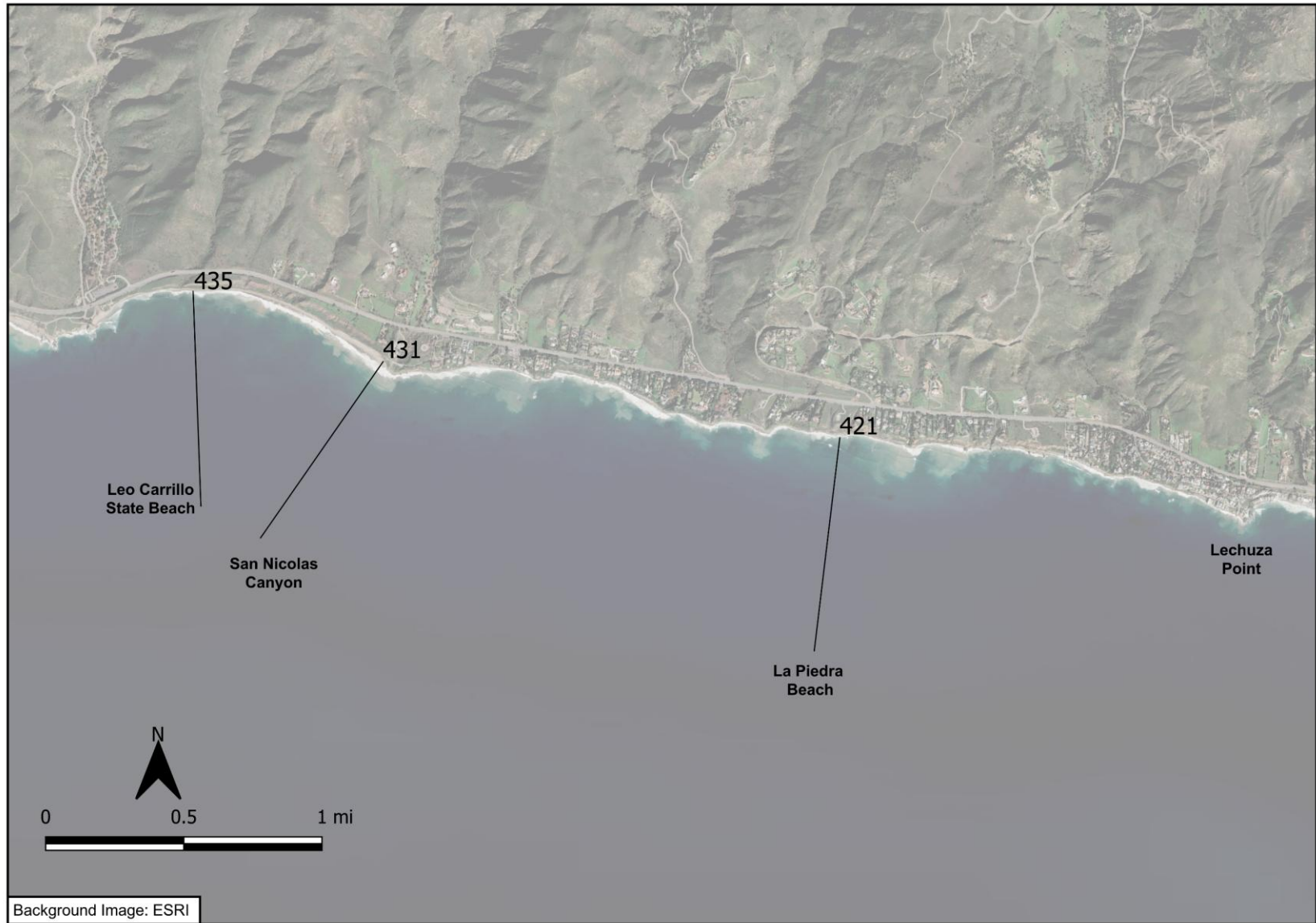


Figure A- 1. Beach Survey Transects between Leo Carrillo State Beach and Lechuza Point

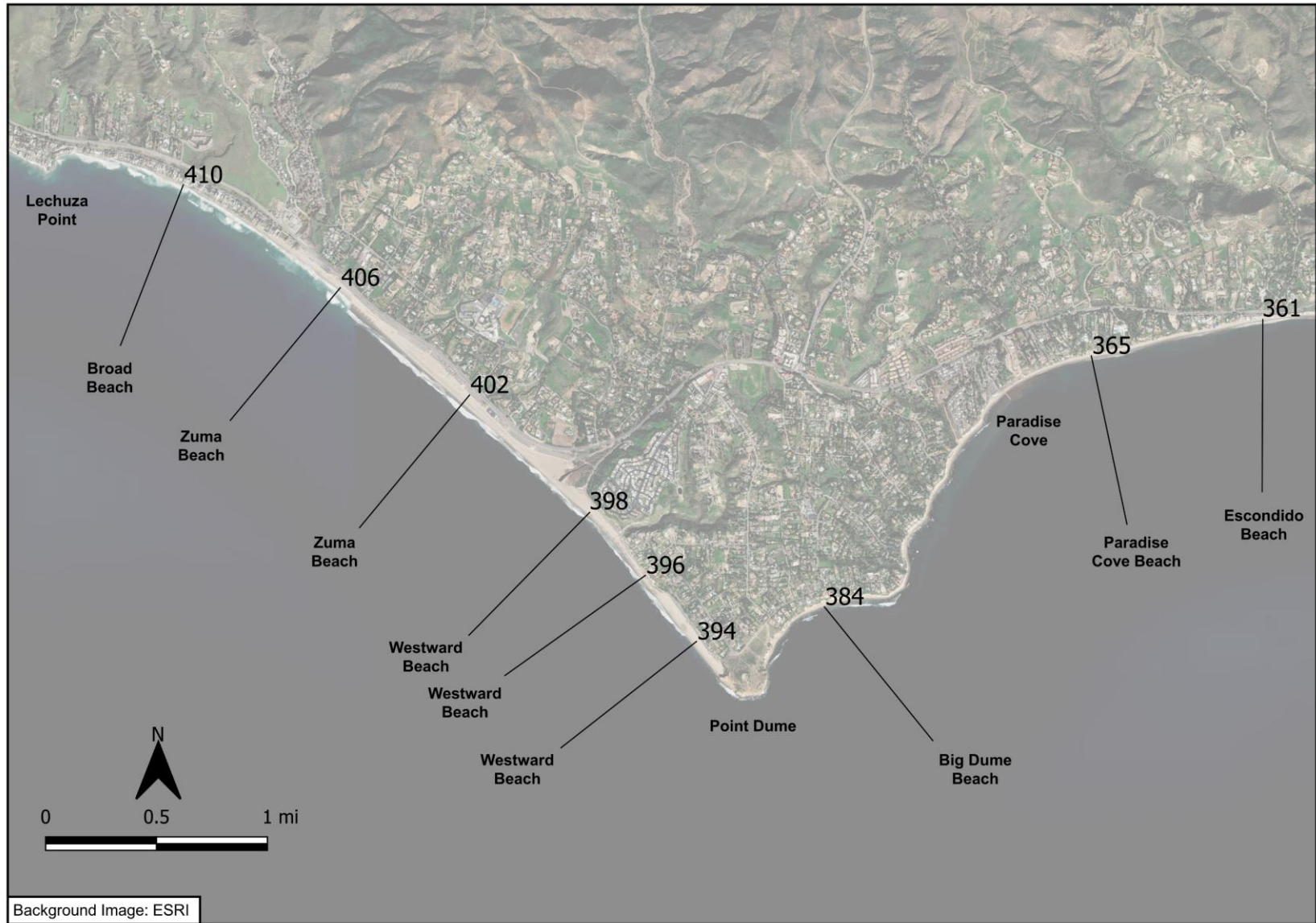


Figure A- 2. Beach Survey Transects between Lechuza Point and Escondido Beach

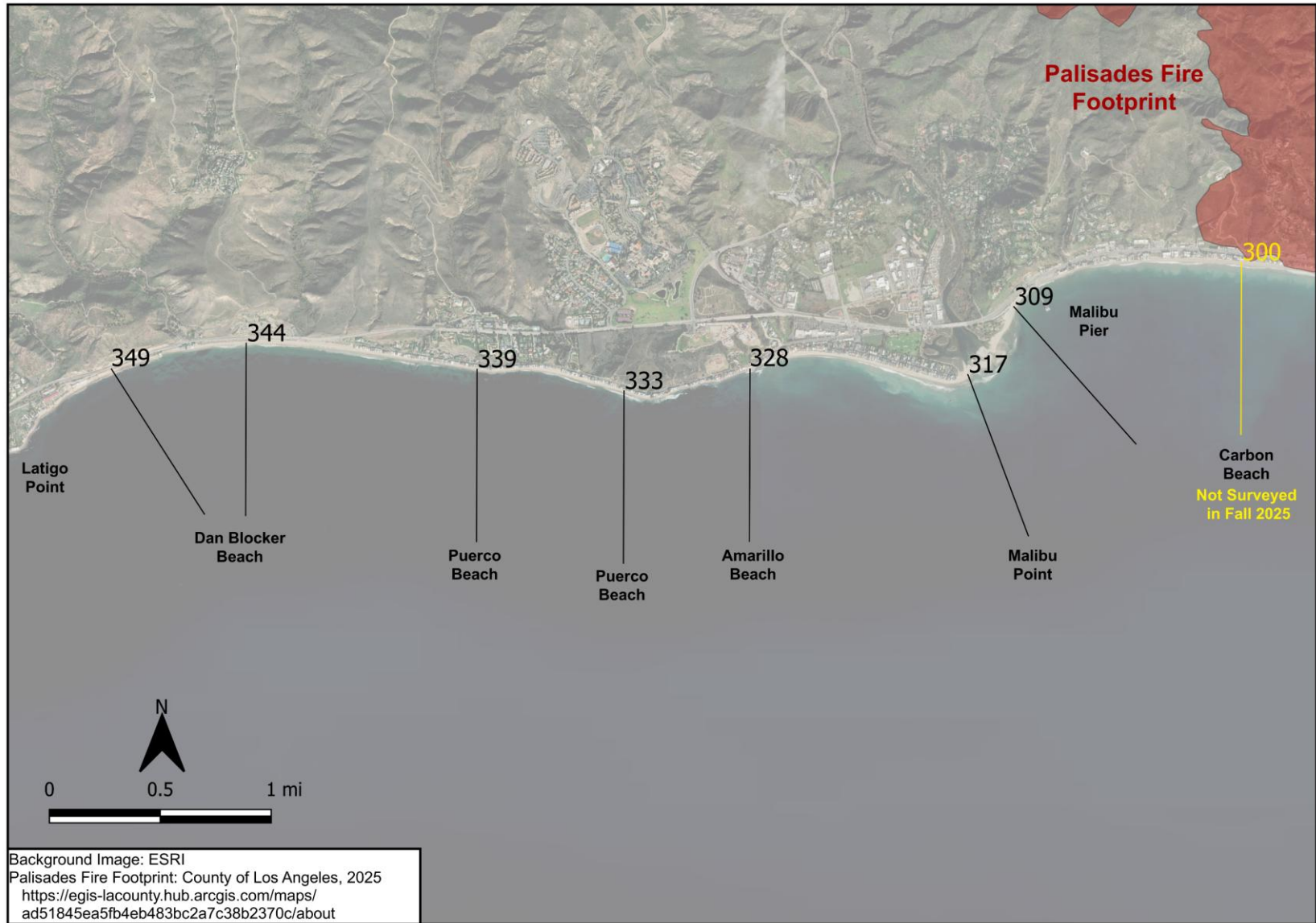


Figure A- 3. Beach Survey Transects between Latigo Point and Carbon Beach

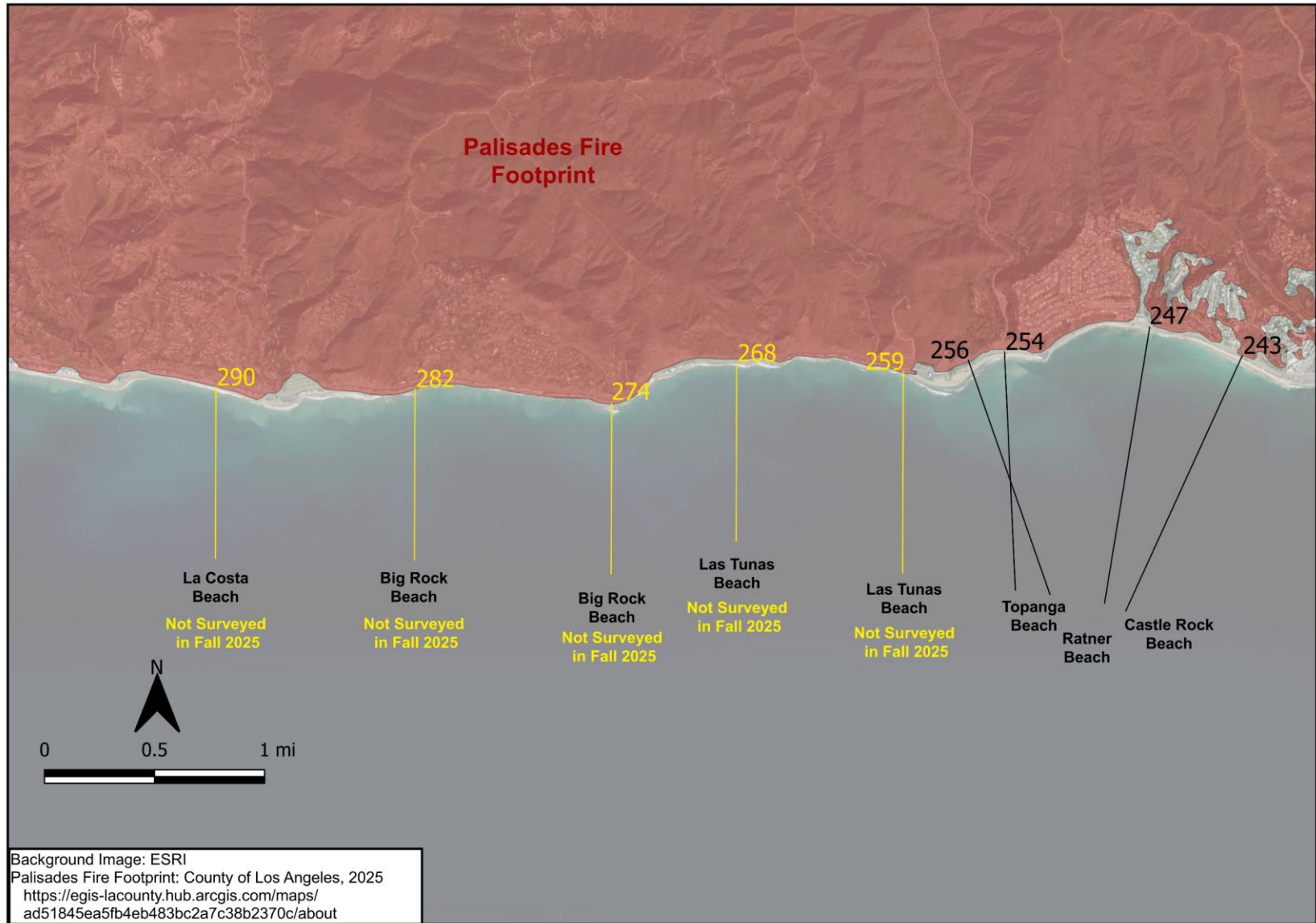


Figure A- 4. Beach Survey Transects between La Costa Beach and Castle Rock Beach

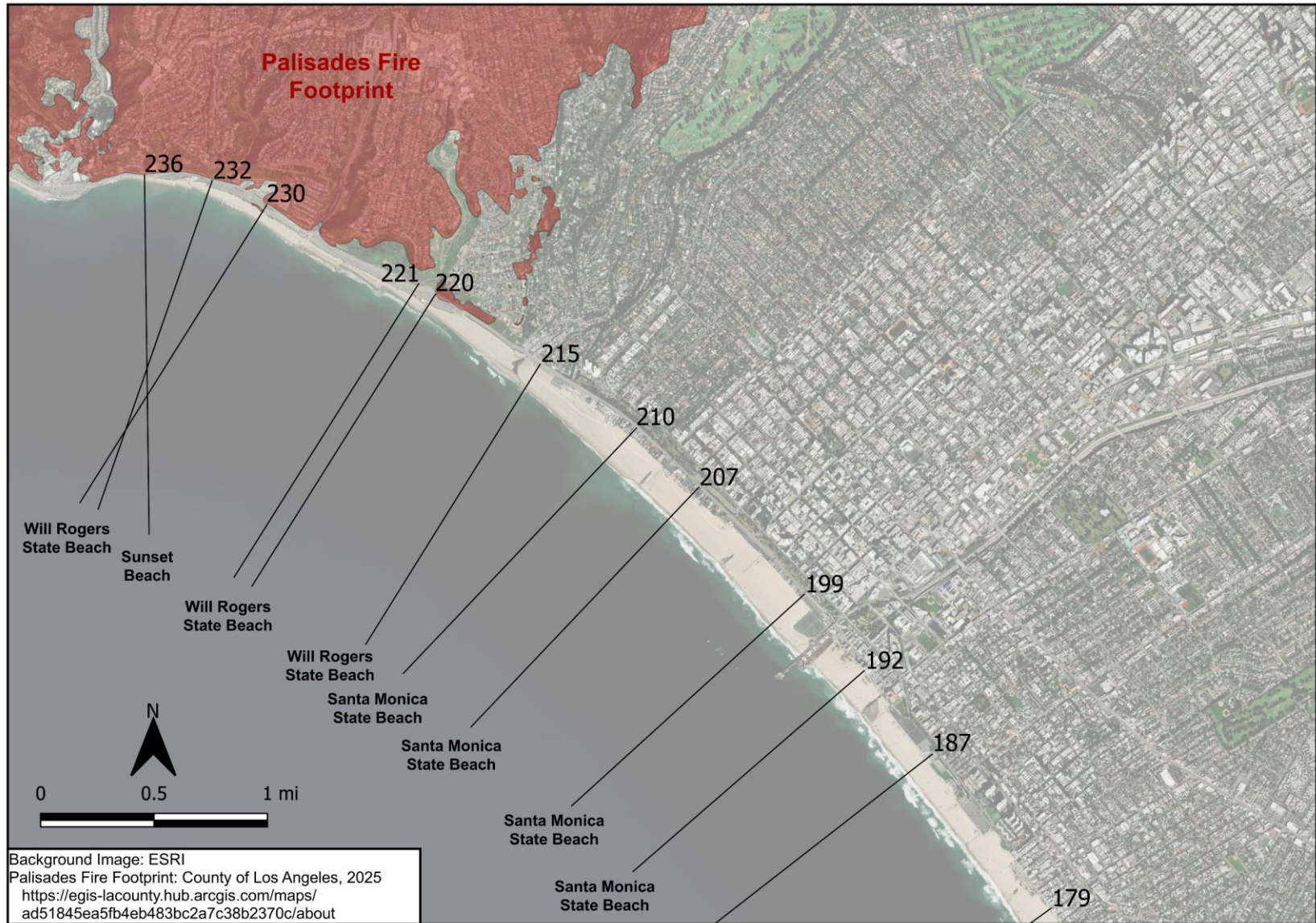


Figure A- 5. Beach Survey Transects between Sunset Beach and Santa Monica State Beach



Figure A- 6. Beach Survey Transects between Venice Beach and Dockweiler State Beach

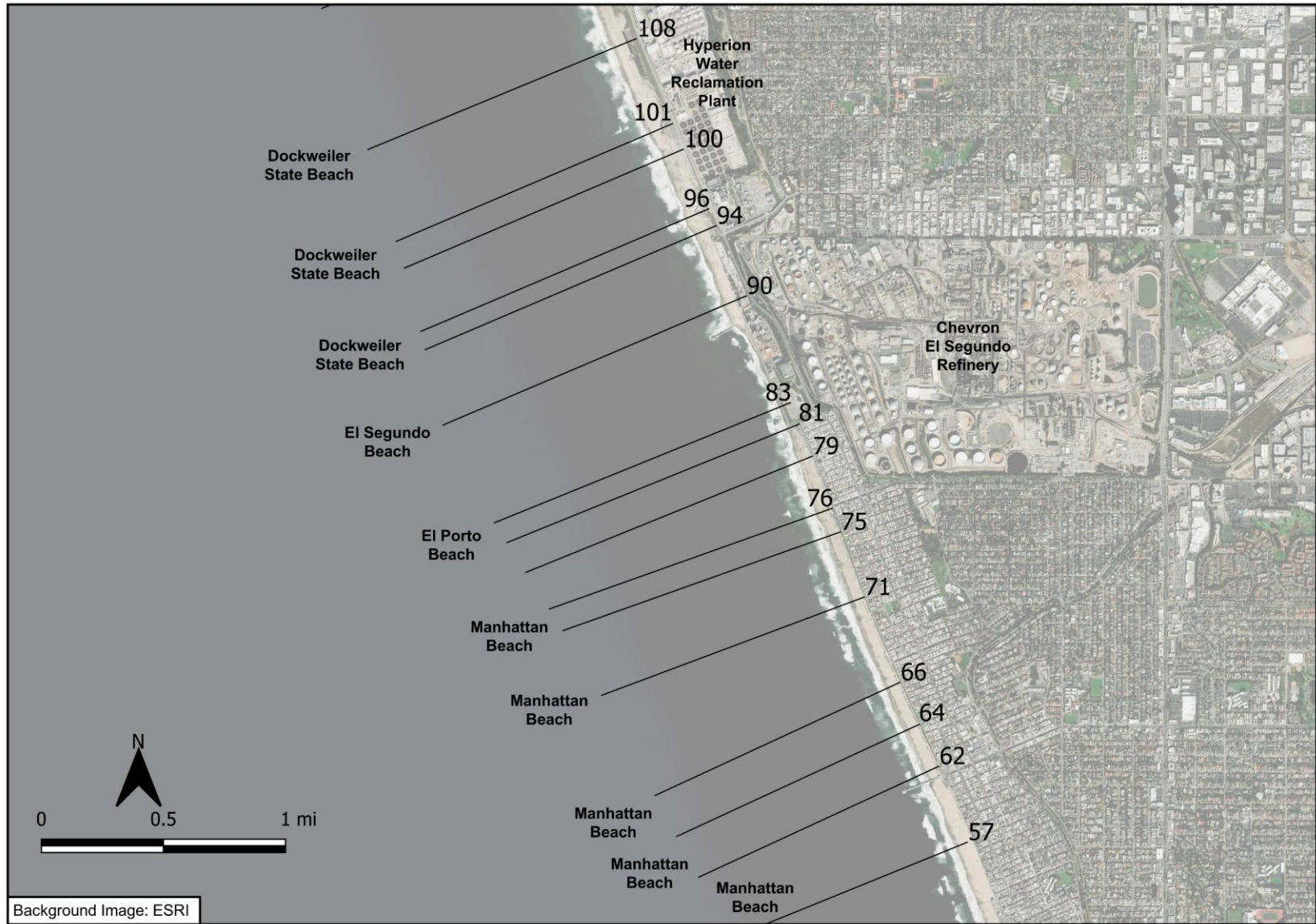


Figure A- 7. Beach Survey Transects between Dockweiler State Beach and Manhattan Beach



Figure A- 8. Beach Survey Transects at Hermosa Beach

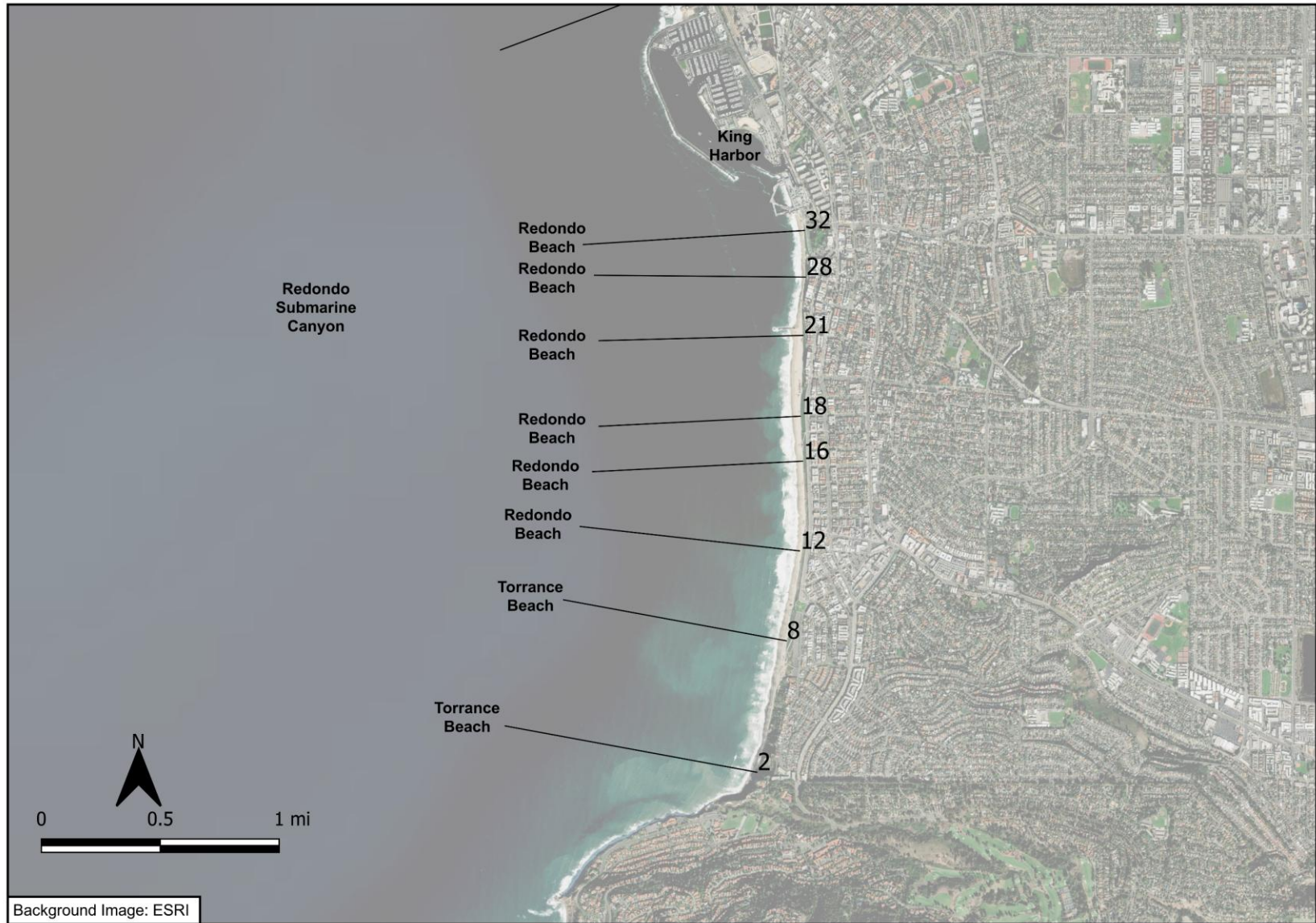


Figure A- 9. Beach Survey Transects at Redondo Beach and Torrance Beach

## **Attachment B**

### **Right of Entry Permit**



**LOS ANGELES COUNTY DEPARTMENT OF BEACHES AND HARBORS**

13837 Fiji Way, Marina del Rey, California 90292

**RIGHT OF ENTRY PERMIT NO. RE-355-25**

**TERM:** This Right of Entry Permit No. RE-355-25 ("Permit") shall commence on **9/1/2025** ("Effective Date") and terminate on **12/31/2030** ("Expiration Date")

**PREMISES:** Portion of real property owned by County of Los Angeles ("County"), controlled, and managed by County's Department of Beaches and Harbors ("DBH"). All Los Angeles County Beaches ("Premises"), as more particularly shown on "Exhibit A" attached hereto and incorporated herein by this reference.

**PERMITTEE:**  
COASTAL FRONTIERS CORPORATION  
KDM MERIDIAN  
c/o Mr. Lee Dodds  
882a Patriot Drive,  
Moorpark, CA 93021

**CONTACT:**  
Lee Dodds  
Phone #: (818)341.8133  
Email: ldodds@coastalfrontiers.com

**PURPOSE OF PERMIT:** The sole purpose of Permit is to grant COASTAL FRONTIERS CORPORATION and KDM MERIDIAN ("Permittee"), its agents, employees, contractors, subcontractors, invitees, visitors, servants, and anyone holding under Permit, (collectively, "Permittee Parties") the right to (I) temporarily ingress/egress access to Premises, and (II) temporarily utilize a portion of the premises to survey along up to 85 transects across Los Angeles County between Leo Carrillo SB and Torrance Beach. Access to all County-managed beaches will be needed for this study. Two 2-person crews will conduct measurements on the beach. From Leo Carrillo SB to Topanga Beach, sites will be accessed from the road. An ATV & UTV will be operated on the beach from Will Rogers SB to Torrance Beach. A small boat will survey the seabed outside of the surf zone, but will not access the beach. The foregoing purposes of Permit shall be referred herein as the "Purpose of Permit"

**EQUIPMENT TO BE USED:** General industry standard construction equipment and appurtenances customarily utilized for the performance of the activities set forth under the above

APPLICATION DATE: 08/01/2025  
PROCESSING FEE: \$ 00.00

ISSUE DATE:  
**COUNTY OF LOS ANGELES,  
DEPARTMENT OF BEACHES AND  
HARBORS**

**TOTAL DUE:** \$ N/A\*

**GARY JONES, DIRECTOR or  
Authorized Representative**

**AMOUNT PAID:** \$ N/A\*

By: \_\_\_\_\_  
Division Chief  
Asset Management Division

RECEIPT NO. \* (Permittee is sharing findings and report(s) with County)

**PERMIT INCLUDES AND IS SUBJECT TO ALL THE TERMS AND CONDITIONS SET FORTH HEREIN, INCLUDING WITHOUT LIMITATION, THE SPECIAL CONDITIONS ("SPECIAL CONDITIONS") AND GENERAL PROVISIONS ("GENERAL PROVISIONS").**



## ROE PERMIT NO. RE-355-25

7. **No Storage Permitted.** Permittee is strictly prohibited from storing any kind of material or equipment on the Premises at any time, including without limitation the storage and/or staging and sorting of (a) hazardous materials, (b) cuttings, dirt or excavated materials, (c) construction materials, (d) abandoned or removed utility lines or facilities, any debris and/or hazardous materials from the Pacific Palisades Fire incident including but not limited, batteries, ash, solvents, electronics, ect. and (e) equipment or vehicles, except as permitted under Permit.
8. **Underground Utility Locator Service.** Permittee shall contact Underground Service Alert at (800) 227-2600 or Goldak at (800) 240-2666, at least forty-eight (48) hours before commencing any excavation or other below surface work authorized under Permit.
9. **Best Efforts to Minimize Negative Impact.** Permittee shall minimize the negative impact on any of the County's operations, including without limitation ensuring that all vehicles and equipment belonging to Permittee, its agents, employees, contractors, subcontractors, invitees, visitors, servants, and anyone holding under Permit (collectively, "Permittee Parties") **do not block any driveways, entrances or exits, parking spaces, emergency access ways or bike paths**, except as expressly permitted under Permit. Emergency vehicles must be able to navigate safely and freely in and out of Premises at all times.
10. **Best Efforts to Ensure Public Safety.** Permittee Parties shall take all the necessary precautions to safeguard the public from injury of any kind relating to the exercise of the rights granted by Permit. Such precautions shall include without limitation: (a) providing the sufficient number of flagmen or other personnel to warn the public of any active construction area, of Permittee Parties' vehicles or equipment traversing Premises, or to coordinate traffic throughout Premises; (b) covering or barricading holes or trenches when they are not being worked on; (c) not allowing any equipment or machinery to sit idle or be left unattended anywhere outside the Staging Area and any work area or anywhere else on Premises; and (d) any other precautions that may be necessary for public safety purposes.
11. **Best Management Practices.** Permittee shall be responsible for the selection and implementation of Best Management Practices ("BMPs") to prevent contamination of Premises, adjacent land, water, or local sand. Such BMPs shall include without limitation, placing oil absorbent pads under all vehicles and equipment, and having absorbent material readily available to prevent any hazardous runoff or spill.
12. **Advertising and Marketing Materials.** Permittee shall not exhibit or permit any Permittee Party to exhibit any advertising signs or other marketing material on Premises, other than signs displaying the name and telephone number of Permittee or information permanently affixed to Permittee's or Permittee Parties' vehicles, unless prior written approval of the Director of DBH is first obtained.
13. **Public Courtesy.** Permittee shall conduct work in a courteous, non-profane, and first-class workmanlike manner. Permittee shall not interfere with the use of Premises by County or the public, except as herein permitted. Permittee shall promptly remove or cause to be removed from Premises all Permittee Parties that fail to conduct activities in the manner heretofore described.
14. **County Not Responsible for Permittee's Property.** Permittee and Permittee Party understand and agree that County shall not be responsible for any theft of or damage to the equipment, tools, vehicles, materials or other property of any Permittee Party or for any personal injury associated with any Permittee Party's entry onto Premises or incurred in connection with the work under Permit. Permittee and Permittee Party shall indemnify, defend, and hold harmless County for any and all claims, liabilities, damages, losses, costs and expenses (including without limitation, legal fees and





## ROE PERMIT NO. RE-355-25

expenditures, work performed, or order done by Permittee will be allowed to offset any payments due to County.

20. **Failure to Comply with Permit's Terms and Conditions.** The failure of Permittee to comply with all terms and conditions of Permit, including without limitation, these Special Conditions or the General Provisions set forth below, shall constitute a material breach of Permit by Permittee and shall entitle County, in addition to any other rights or remedies, to immediately terminate or suspend Permit.

### **GENERAL PROVISIONS**

1. **Notification to Permittee's Parties.** Permittee shall be responsible for informing all Permittee Parties of the conditions of Permit, and that a copy of Permit shall be given to the contractor(s) and any subcontractor(s). Further, a copy of Permit shall be kept at the work site at all times during the term of Permit.
2. **Additional Conditions.** Permit is subject to additional conditions that the Director of DBH or his representative may in his sole discretion issue during the term of Permit. When possible, such additional conditions shall be delivered in writing to the address or email address shown on the first page of Permit.
3. **Compliance with other Permits and Approvals.** Permittee is advised that performance of any work under Permit may require permits, approvals, waivers or recommendations from those regulatory agencies having jurisdiction thereof, including without limitation, the United States Army Corps of Engineers, the California Coastal Commission, and/or the California Department of Transportation. Permittee shall obtain all required permits, approvals, waivers or recommendations prior to commencing work, and shall keep and perform all provisions contained therein.
4. **Provide County with all other Permits and Approvals.** Permittee shall provide County with a copy of all permits, approvals, waivers, or recommendations for the work under Permit (including any and all extensions, updates, amendments or addenda) issued or to be issued to Permittee by any regulatory agency. Prior to the commencement of any work under Permit, Permittee shall demonstrate to the satisfaction of County that it has obtained and will maintain for the duration of Permit, all permits, approvals, waivers or recommendations necessary for the work on Premises, and other related work to be performed by Permittee on any other surrounding land. Failure to comply with this condition shall constitute a material breach of contract upon which the County may immediately terminate or suspend Permit.
5. **Compliance with Law.** Permittee shall, at its sole expense, comply with, and cause all Permittee Parties to comply with, all applicable codes, laws, rules, regulations, statutes, resolutions, ordinances, covenants, conditions and restrictions of County, City, State, the United States of America, the California Coastal Commission and/or other governmental or quasi-governmental entities (including without limitation, relevant provisions of the Americans with Disabilities Act ("ADA")) (collectively, "Applicable Laws") or of any other person or entity, in effect during the term hereof, regulating the use, occupancy or improvement of Premises.
6. **Right of Use.** Permittee acknowledges that Permit is issued to Permittee for the intended activities, and is not intended to create, and shall not be construed to create, the relationship of agent, servant, employee, partnership, joint venture, association or landlord/tenant, as between County and Permittee. It is expressly understood by Permittee that in allowing the right to use Premises, no estate or interest in real property is being conveyed to Permittee, and that the right to use Premises











## ROE PERMIT NO. RE-355-25

losses, liabilities, claims and costs (including reasonable attorneys' fees and costs) to the extent arising from the breach of any warranty or this General Provision contained in this General Provision by Permittee or Permittee Parties except for losses, claims, or liabilities, etc., caused by gross negligence or willful conduct of County, its Special Districts, elected and appointed officers, employees and agents.

County may at any time and from time to time, and at its sole discretion, enter upon Premises to conduct, or have conducted, environmental site assessments. If such an assessment indicates a violation of this General Provision, County may, at its sole discretion, immediately terminate or suspend Permit. Permittee shall bear any and all responsibility, expense, and liability incurred in the cleanup and treatment of any hazardous substances or condition found on Premises caused by Permittee's use, storage, or treatment of any hazardous substances on or within Premises.

16. **County Lobbyist.** Each "County Lobbyist," as defined in Los Angeles County Code Section 2.160.010, retained by Permittee shall fully comply with the County Lobbyist Ordinance, Los Angeles County Code Chapter 2.160. Failure on the part of any County Lobbyist retained by Permittee to fully comply with the County Lobbyist Ordinance shall constitute a material breach of Permit, upon which County may immediately terminate or suspend Permit.
17. **Surviving Obligations.** Notwithstanding any contrary term or provision of Permit, no expiration or termination of Permit shall release or relieve Permittee from: (a) any obligations or liabilities that arise or accrue prior to such expiration or termination; or (b) any obligations or liabilities of Permittee relating to the repair, restoration or surrender of Premises. Permittee's obligations and liabilities set forth in the immediately preceding sentence shall survive any suspension, expiration or termination of Permit.
18. **Suspected Fraud.** Permittee shall, and shall direct Permittee Parties to, report any suspected fraud or wrongdoing by any County employee. Such report may be made anonymously, at the County Fraud Hotline (800) 544-6861, or [www.lacountyfraud.org](http://www.lacountyfraud.org).
19. **Governing Law.** Permit shall be controlled by and construed under the laws of the State of California, excluding California's choice of law rules. In the event of any dispute regarding the conditions of Permit, or the rights or obligations of the parties hereto, such dispute shall be submitted to arbitration in accordance with the provisions of the California Arbitration Act (California Code of Civil Procedure Section 1280 et seq.).
20. **Interpretation.** Unless the context of Permit clearly requires otherwise: (i) the plural and singular numbers shall be deemed to include the other; (ii) the masculine, feminine and neuter genders shall be deemed to include the others; (iii) "or" is not exclusive; and (iv) "includes" and "including" are not limiting.



ROE PERMIT NO. RE-355-25

**ACCEPTANCE**

Permittee represents and warrants that the signatory to Permit is fully authorized to obligate Permittee hereunder and that all acts necessary for the execution of Permit have been accomplished.

The undersigned Permittee acknowledges that it has read, understands and agrees to all the terms, conditions, and restrictions contained in Permit.

PERMITTEE:

COASTAL FRONTIERS CORPORATION

Signature:  \_\_\_\_\_

Name in Print: Greg Hearon

Title: Principal

Date: 08/11/2025

**WARNING:** COMPLETION OF AN APPLICATION CONFERS NO PRIVILEGES UPON THE APPLICANT. DO NOT ATTEMPT TO ENTER OR USE PREMISES UNTIL YOU HAVE RECEIVED A FULLY EXECUTED PERMIT. ANY ATTEMPT TO ENTER OR USE PREMISES MAY CAUSE YOUR APPLICATION TO BE REJECTED AND MAY SUBJECT YOU TO CIVIL OR CRIMINAL PROSECUTION.



Exhibit A

