

Regional Coastal Strategic Adaptation Plan Stakeholder Meeting # 1



DEPARTMENT OF
BEACHES & HARBORS
Caring for Our Coast Los Angeles County

May 12, 2025

Meeting Agenda



1. Welcome and Opening Remarks
2. Introductions
3. Meeting Purpose & Strategic Plan Goals
4. Overview of Potential Coalition Structures
5. Shoreline Monitoring Program
6. Schedule of Upcoming Milestones

Introductions



1. LACDBH Team
2. Consultant Team Supporting LACDBH
3. All Stakeholders

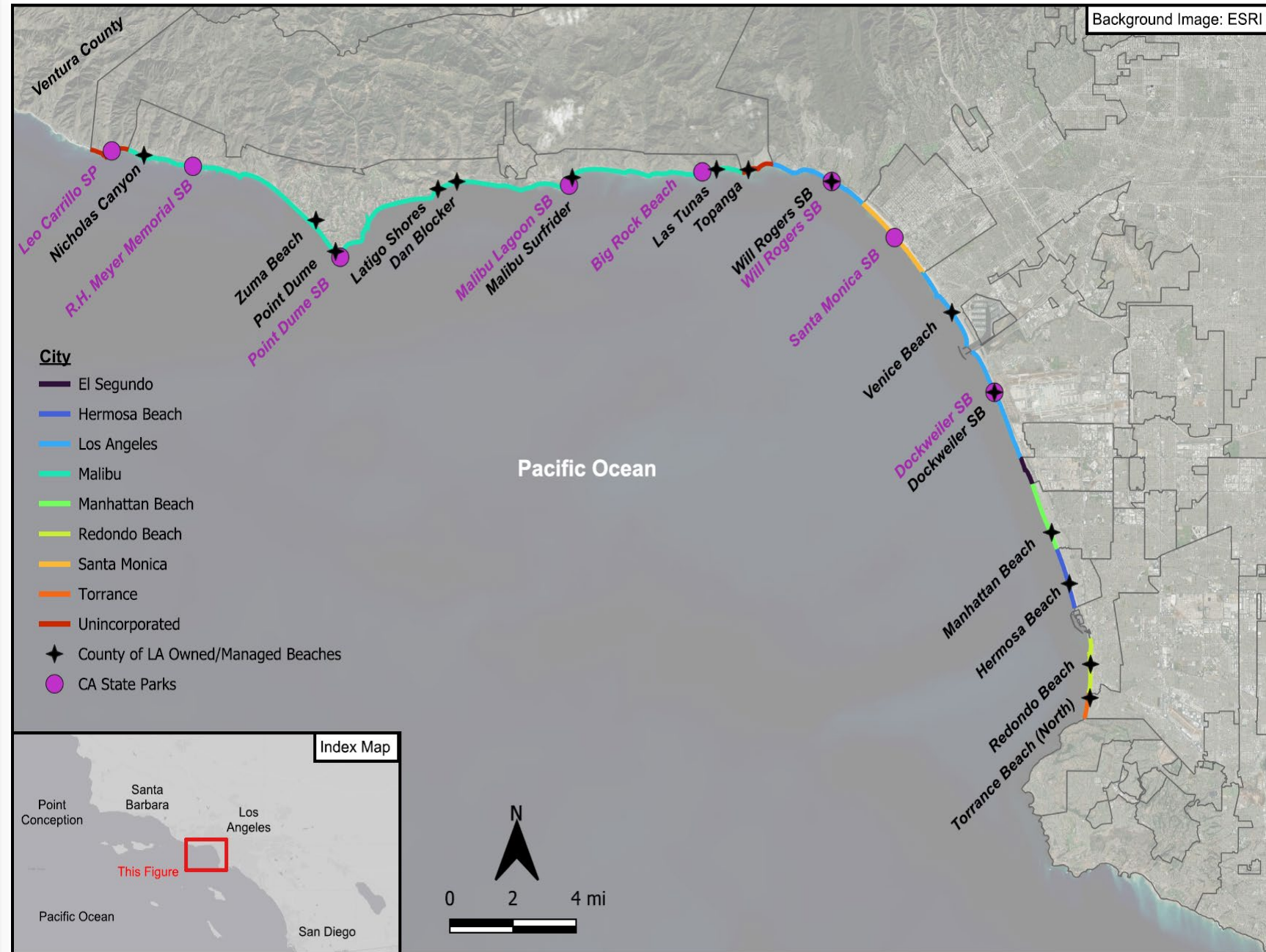


Meeting Purpose

1. Introduce the **LA County Regional Coastal Strategic Adaptation Plan (RCSAP)**
2. Discuss Regional Goals and Objectives
3. Initiate Coalition Building Process
4. Present Shoreline Monitoring Program
5. Outline Schedule and Next Steps



Overview Beaches in the Los Angeles County Region



SB-1 Grant Scope of Work



Task 1. Organize & Conduct Stakeholder Meetings

Build a Regional Coastal Coalition

Stakeholder Engagement

Conduct 4 Workshops



Task 2. Develop Shoreline Monitoring Plan



Task 3. Prepare Regional Coastal Strategic Adaptation Plan



Task 4. Conduct Shoreline Monitoring Program

Historical Beach Profile Transects

Fall Survey (September 2025)

Spring Survey (April/May 2026)

Regional Coastal Strategic Adaptation Plan



Chapters

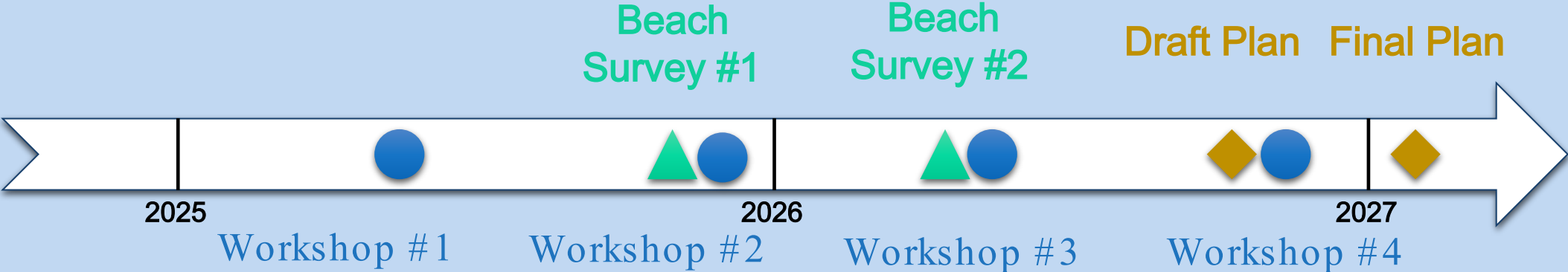
- Intro: Goals and Objectives
- Background
- Regional Beach Economics
- Coalition Engagement
- Regional Priorities and Projects
- Funding Opportunities
- Recommendations



Proposed Schedule (2025 – 2027)



PROPOSED SCHEDULE



Regional Goals and Objectives



- **Initiate Regional Coastal Sediment Management Practices**
 - Coordinate on RCSAP document to guide planning decisions
 - Leverage Coalition to conduct regional planning and decision-making
- **Implement Priority Projects**
 - Develop work plans
 - Secure funding
 - Implement projects
- **Potential Regional Projects**
 - Regional beach nourishment
 - Expanded SCOUP
 - Offshore sand source identification
 - Managed sediment bypassing at Point Mugu
 - Southern California Sand Collaborative



Formation of a Regional Coalition



Grant includes creation of regional coastal coalition

Agencies addressing similar challenges / problems

Consider various collaboration structures

Starting Point for advance regional coordination

Value & Benefits of a Coastal Coalition



- Collaboration supports regional coastal management practices
- Granting/funding agencies support regional approach/solutions
- Promotes collaboration rather than competition
- Creates efficiencies and economies of scale for coastal projects
 - Share costs of planning, permitting, construction, and monitoring
 - Obtain a single permit instead of multiple permits from agencies
 - Single CEQA / NEPA compliance documents for regional project

Examples of Other Coalitions & Collaboration Frameworks



Contemporary examples of other existing regional coastal coalitions:

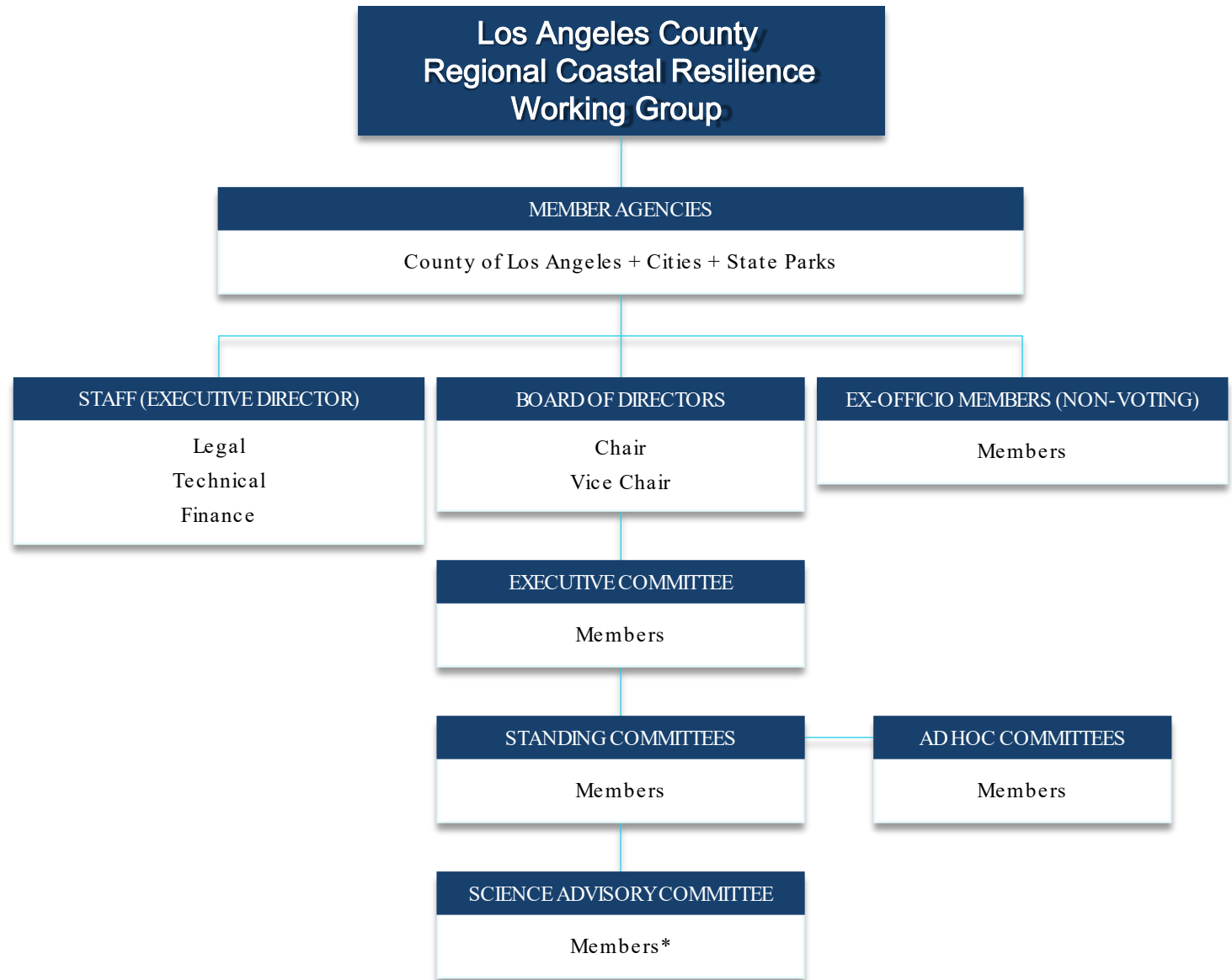
- BEACON Style Coalition
- SANDAG Shoreline Preservation Working Group Style Coalition

Other Potential Approaches Include:

- County of Los Angeles Led Coalition
- U.S. Army Corps of Engineers Led Coalition
- Consultant or Non -Profit Led Coalition

Example 1

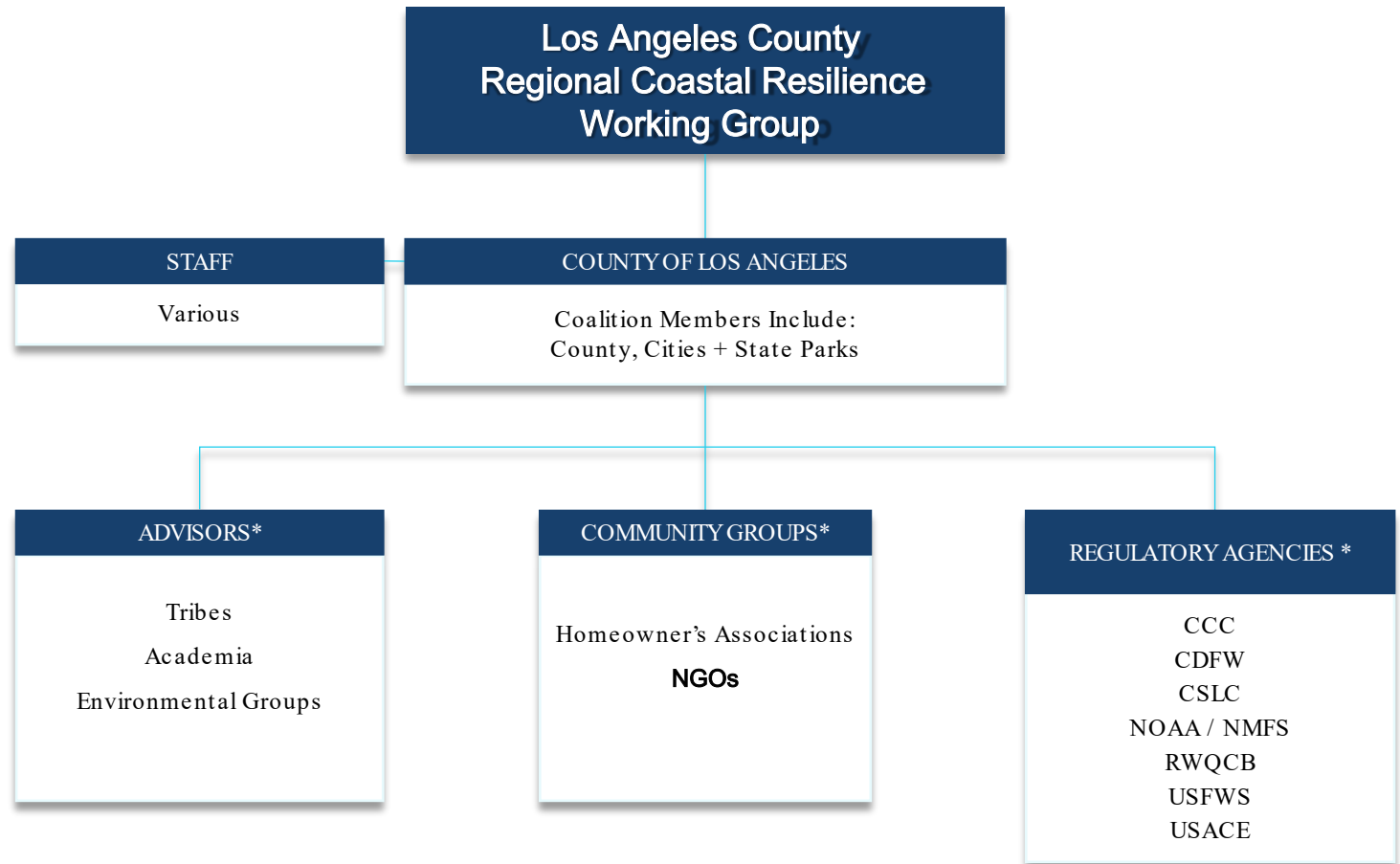
BEACON (JPA) Style Coalition



Note: * Non -voting, advisory members

Example 2

SANDAG Style Coalition

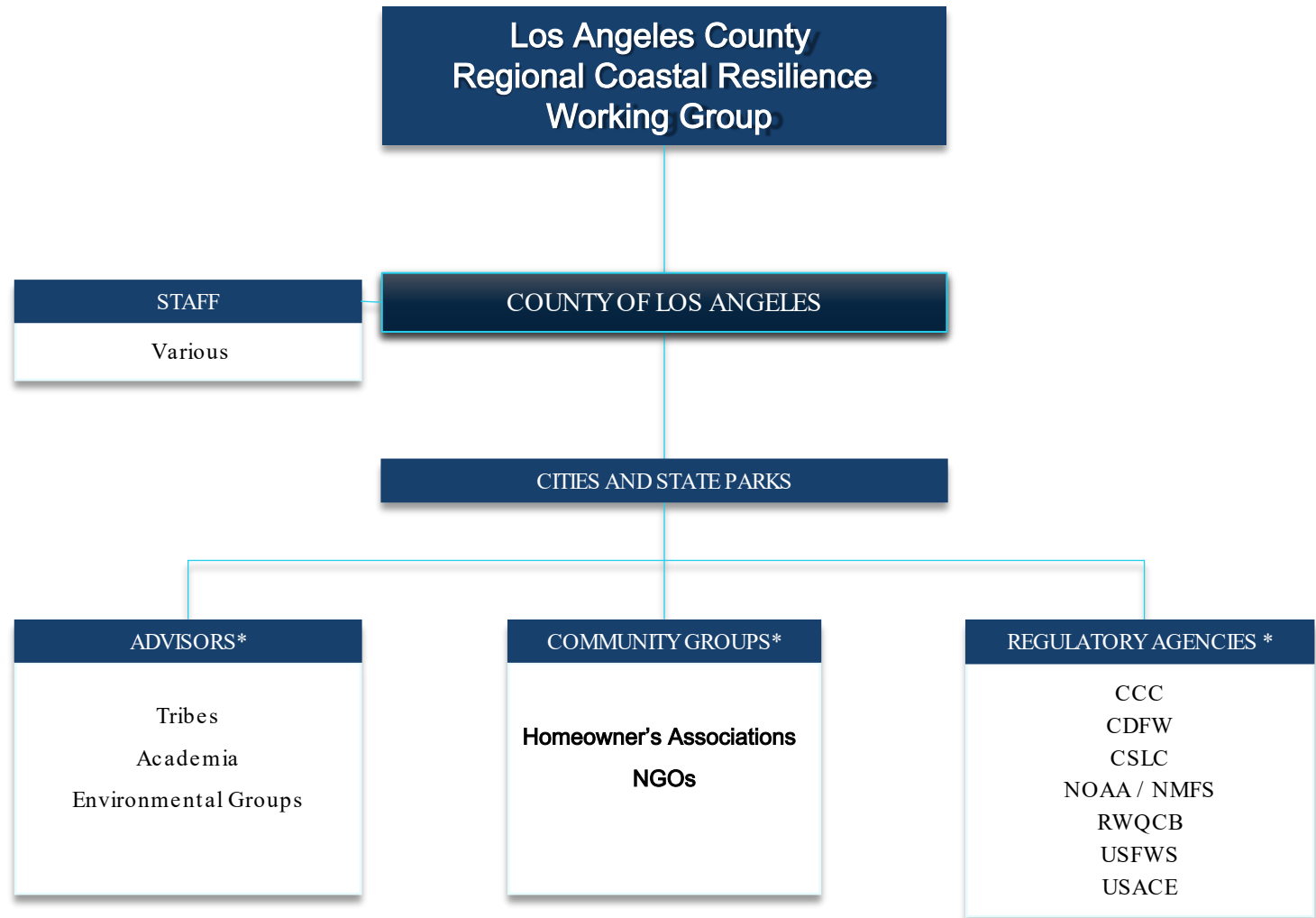


Note: * Non -voting, advisory members



Example 3

County Led Coalition

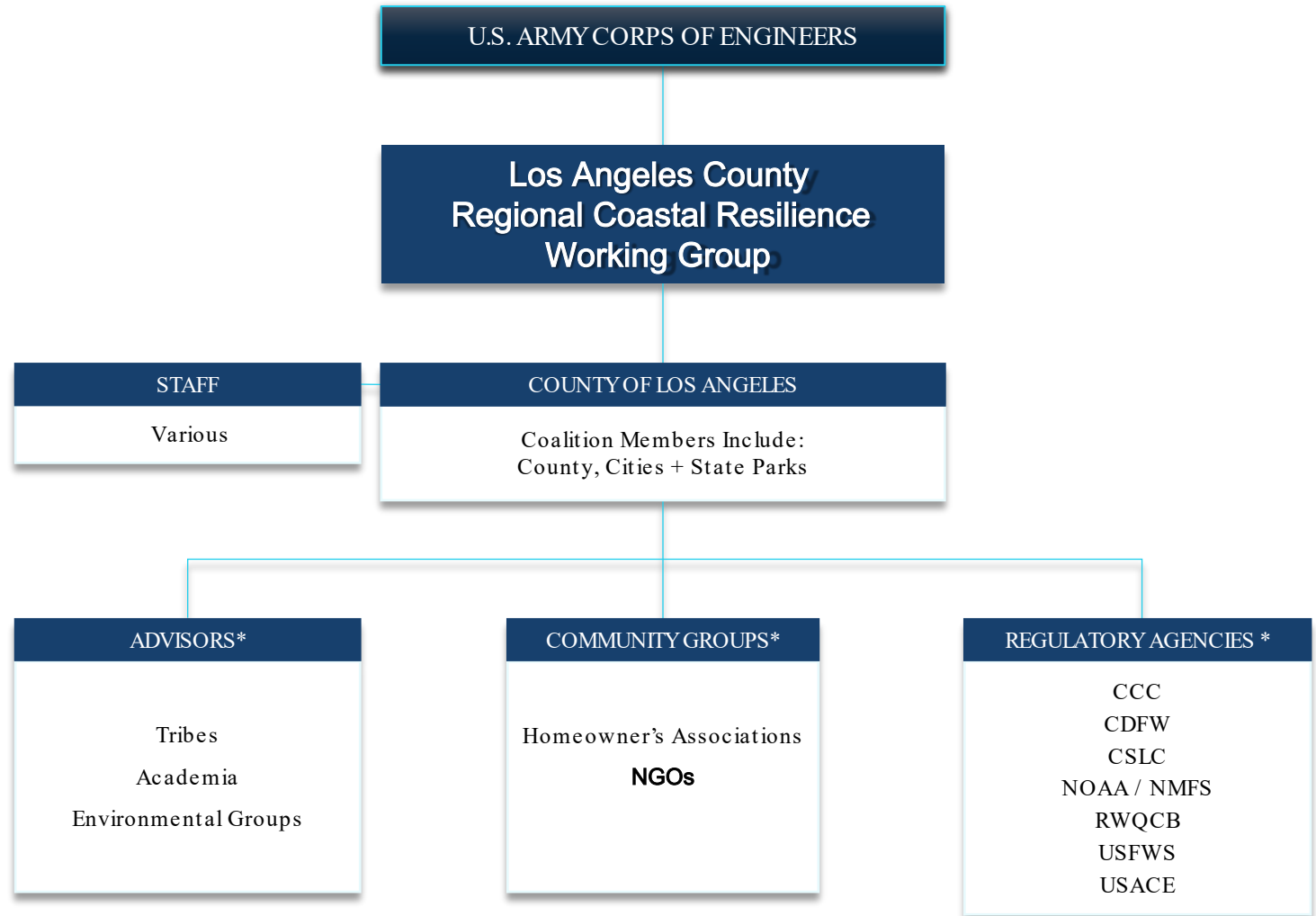


Note: * Non -voting, advisory members



Example 4

USACE Led Coalition

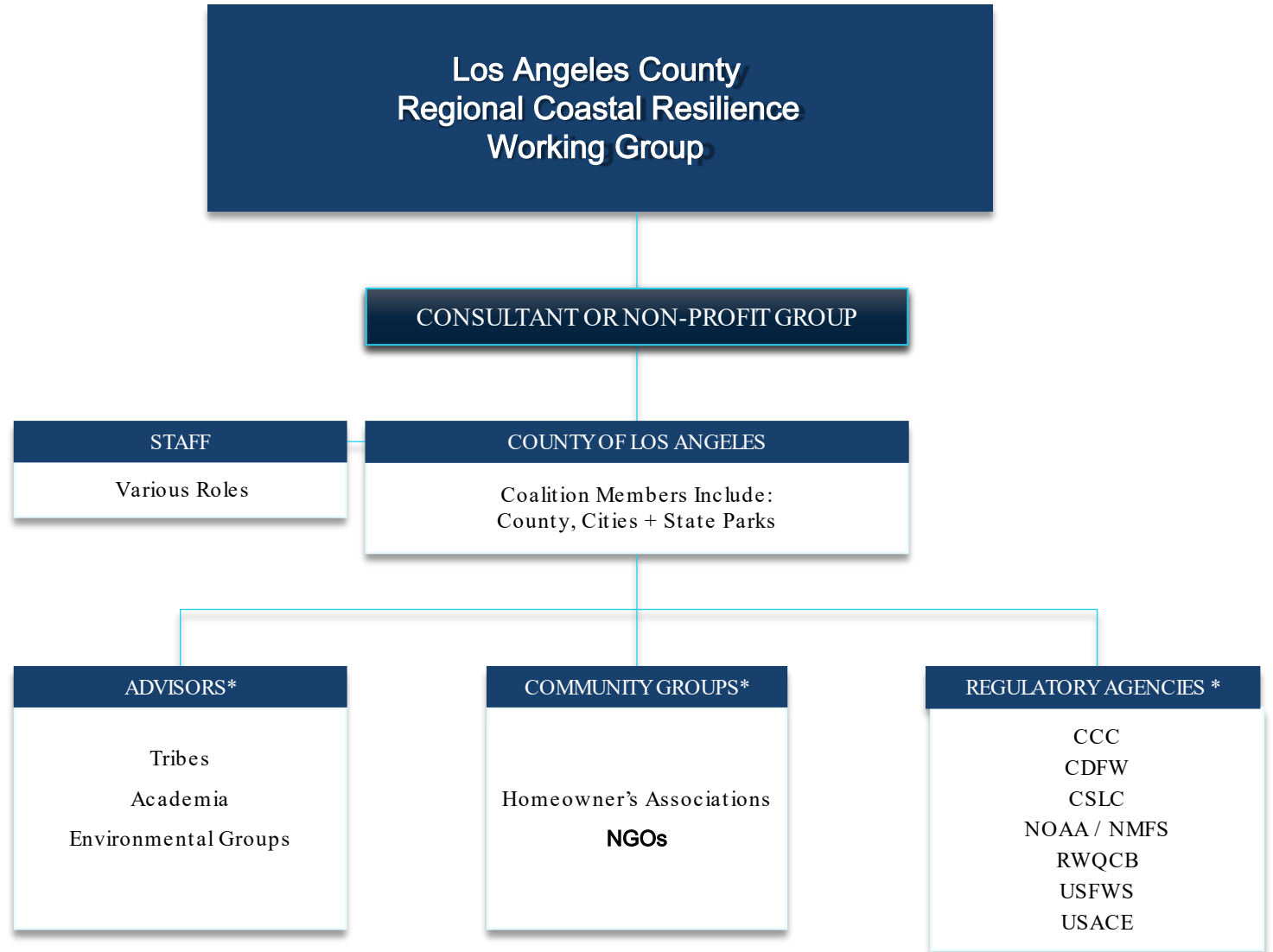


Note: * Non-voting, advisory members



Example 5

Consultant or Non-Profit Led Coalition



Note: * Non -voting, advisory members



Regional Shoreline Monitoring Program



- Measure Changes in Shorezone
 - Builds on Previous Efforts
 - Fall and Spring Beach Profile Surveys
- Evaluate and Plan Shoreline Projects
 - County Coastal Resilience Projects
 - SCOUP
 - Regional Beach Nourishment
 - Local Efforts
- Document Impact of Natural Events
 - El Niño
 - SLR

Regional Shoreline Monitoring Program



S. California Programs

SANDAG

(1996-present)

City of San Clemente

(2001-2007; 2022 -present)

LA County

- Various: 1935, 1946, 1953
- LADBH: 3 surveys from 1989-1990 (223 sites)
- USACE CCSTWS: 6 surveys 2002-2005 (up to 437 sites)

Newport Beach

(2006 -present)

Goleta

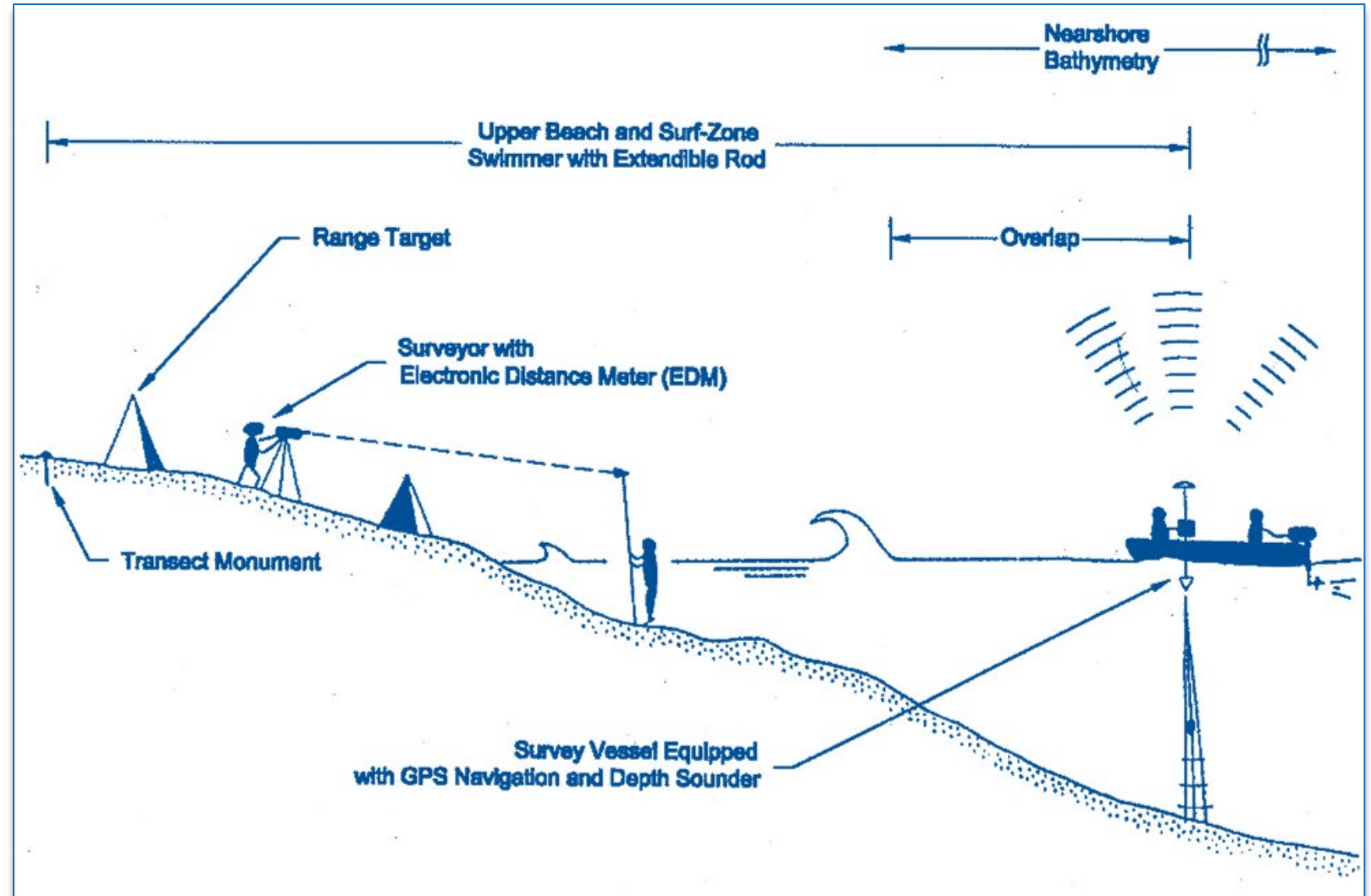
(2000 -present)

Others

- USACE Orange County
- BEACON
- Broad Beach

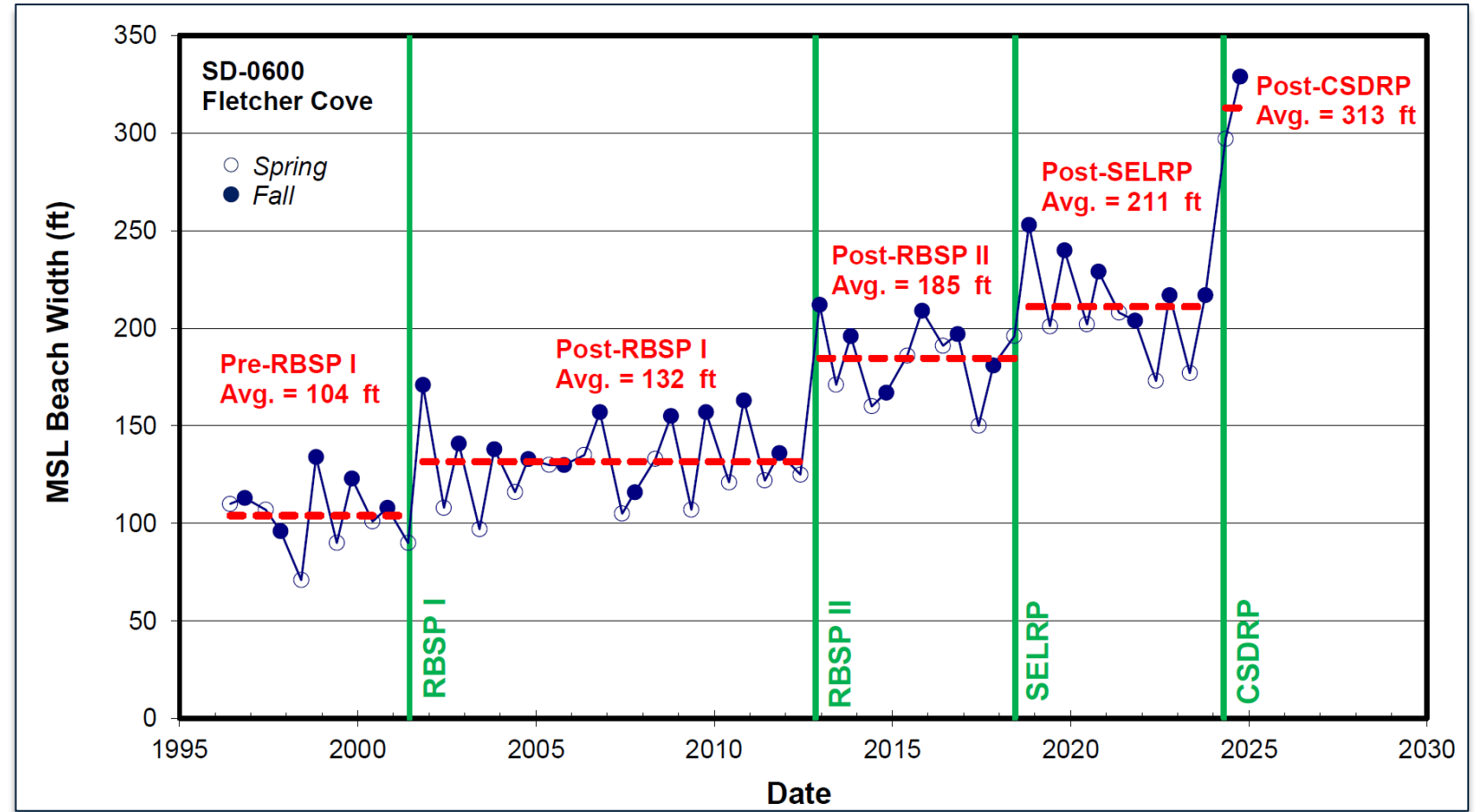


Regional Shoreline Monitoring Program



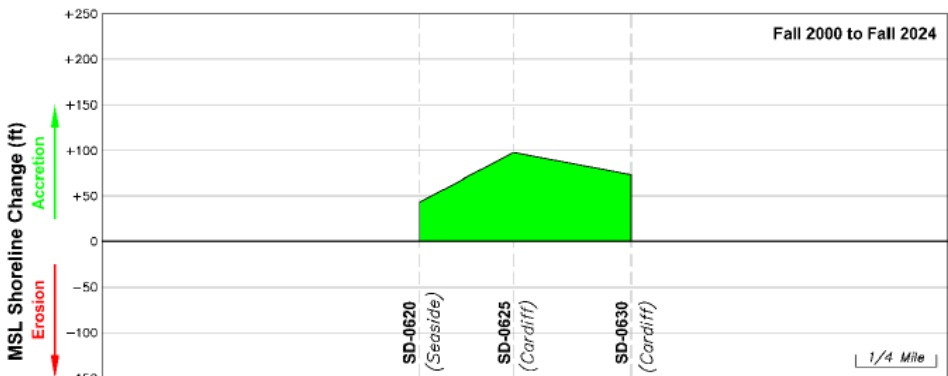


Regional Shoreline Monitoring Program

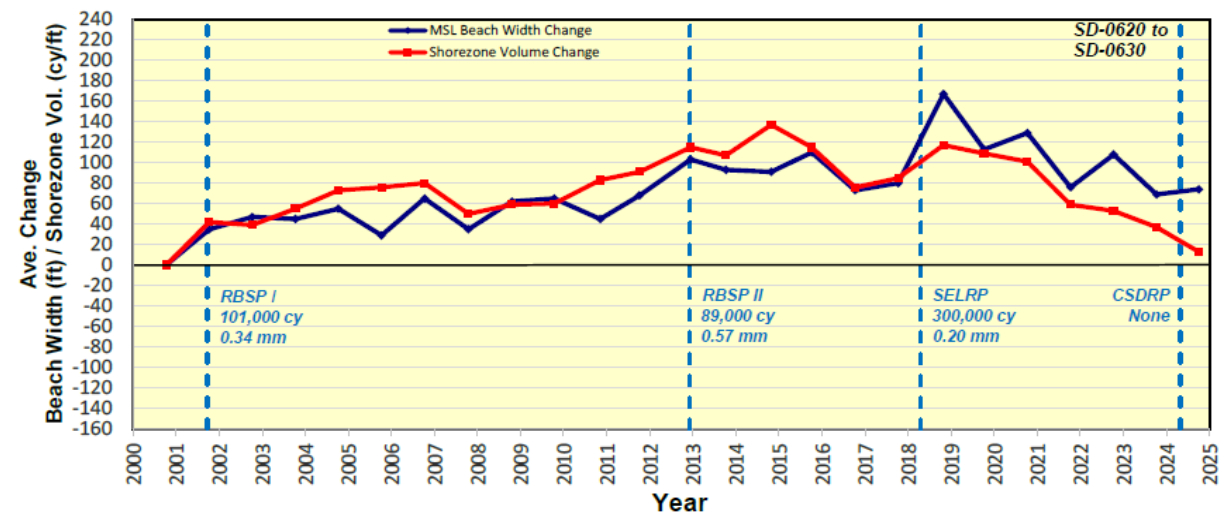


Cardiff Sub-Reach (Transects SD-0630 to SD-0620)

Post-RBSP I MSL Shoreline Change (Fall 2000 to Fall 2024)



Average MSL Beach Width and Shorezone Volume Change Relative to Pre-RBSP I Condition (Fall 2000)



Net Change: Fall 2000 to Fall 2024

MSL Beach Width: +74 ft
Shorezone Vol: +13 cy/ft

Trend: Fall 2000 to Fall 2024

MSL Beach Width: +3.4 ft/yr
Shorezone Vol: +1.1 cy/ft/yr

- Average beach width and shorezone volume for sub-reach derived by weighting each value according to the alongshore distance associated with the corresponding transect.
- Only transects with measurements dating back to Fall 2000 used to calculate average values for sub-reach.
- Trends derived by linear regression.

Transect SD-0630 (October 3, 2024)



Location Map



MSL Beach Width Summary

Transect	Fall 2024 Beach Width (ft)	Seasonal Change (ft)		Annual Change (ft) Fall 23-Fall 24	Post-RBSP I (ft) Fall 00-Fall 24
		Winter (Fall 23-Spr. 24)	Summer (Spr. 24-Fall 24)		
SD-0630	205	-67	75	8	73
SD-0625	204	-71	68	-3	98
SD-0620	142	-17	26	9	43

Shorezone Volume Summary

Transect	Annual Change (cy/ft)	Post-RBSP I (cy/ft)
	Fall 23-Fall 24	Fall 00-Fall 24
SD-0630	-37	-1
SD-0625	-27	43
SD-0620	1	-3

SandSnap, SD-0630



Spring 2024

Sample ID: 06302405
D₅₀: 0.32 mm
Desc.: Medium Sand

Fall 2024

Sample ID: 06302410
D₅₀: 0.24 mm
Desc.: Fine Sand

Regional Shoreline Monitoring Program



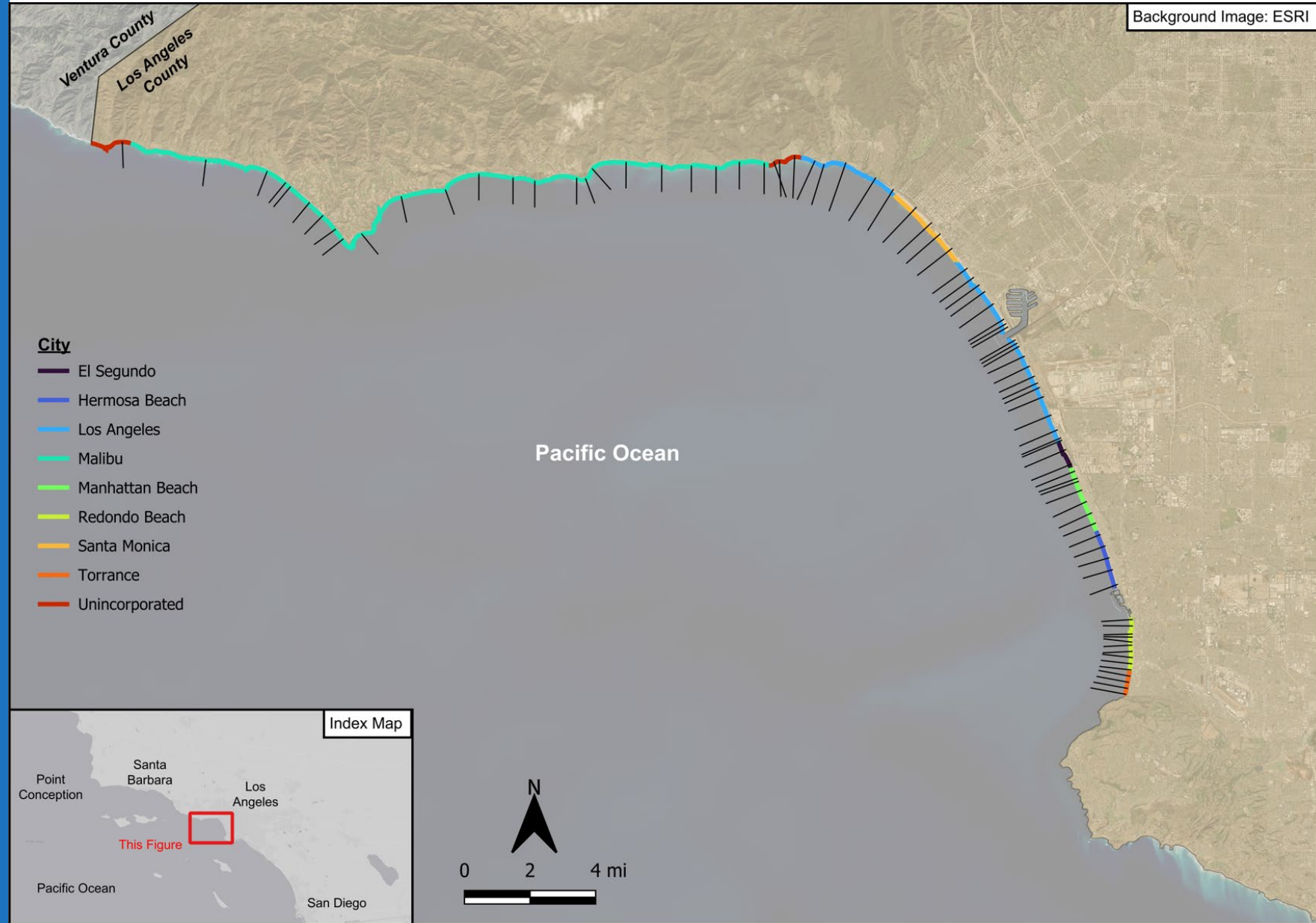
PROPOSED PROGRAM

- Balance budget and science to develop sustainable program
- Occupy historical beach profile transects
- 85 Beach Profile Transects
 - Start with USACE “core 81” sites
 - Add to Provide Coverage
 - SCOUP
 - Planned Coastal Resilience Projects
 - Current County Projects
 - County Beach Representation
 - Remove Select Sites to Balance Add-ons





Regional Shoreline Monitoring Program



Regional Shoreline Monitoring Program

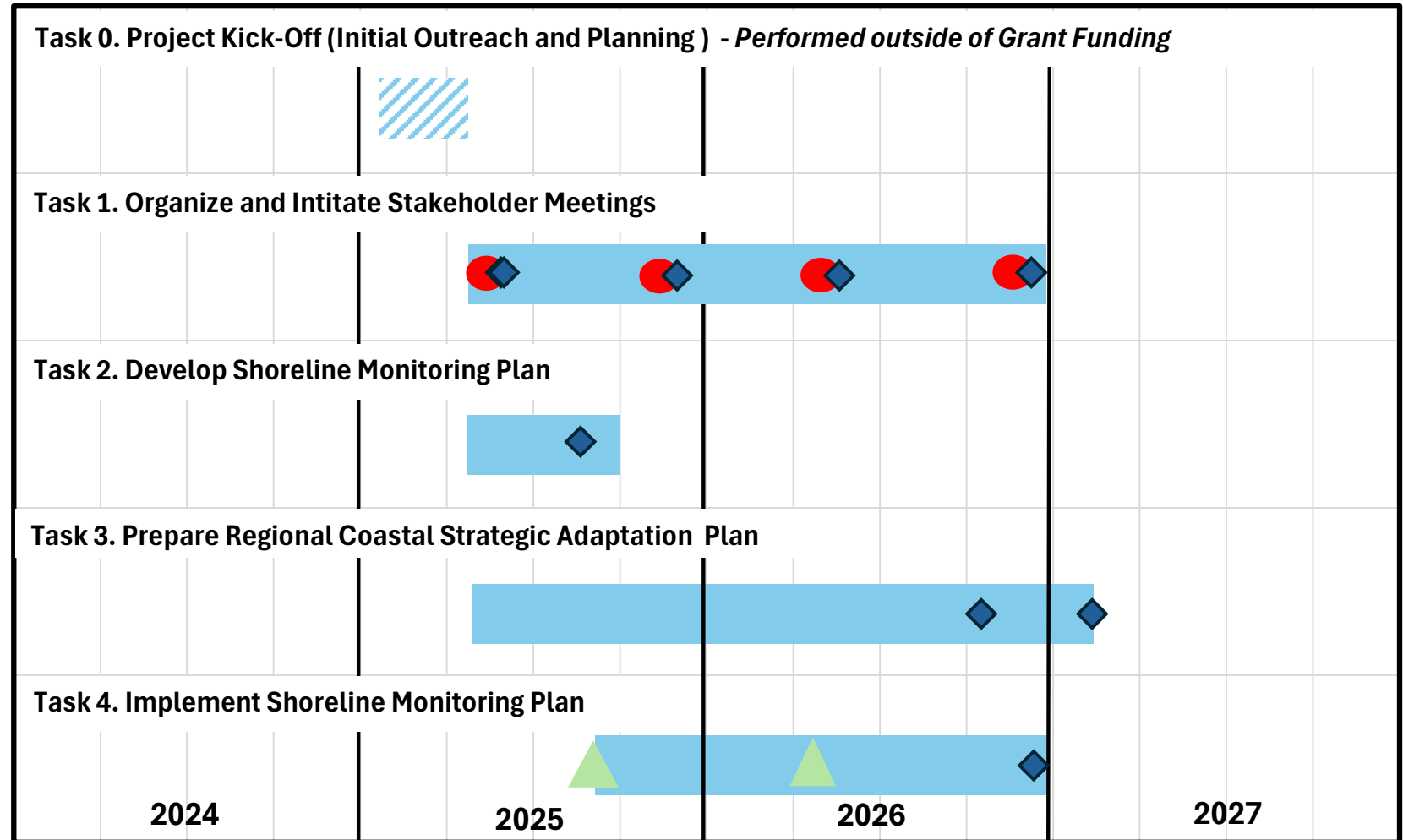


NEXT STEPS





Schedule of Upcoming Milestones



Work Plan Elements

- Task in Progress
- Stakeholder Workshop
- Beach Profile Survey
- Deliverable

Schedule of Upcoming Milestones



NEXT STEPS

- Post-Workshop #1 Survey
- Draft Coalition Structure Memorandum
- Shoreline Monitoring Plan Feedback
 - *Plan Overview*
 - *Google Earth kmz Showing Beach Profile Transect Locations*
- Prepare RCSAP Draft Table of Contents





Thank you for Attending Workshop # 1

Emiko Innes, Planner, LACDBH

Einnes@bh.lacounty.gov

424-526-7751