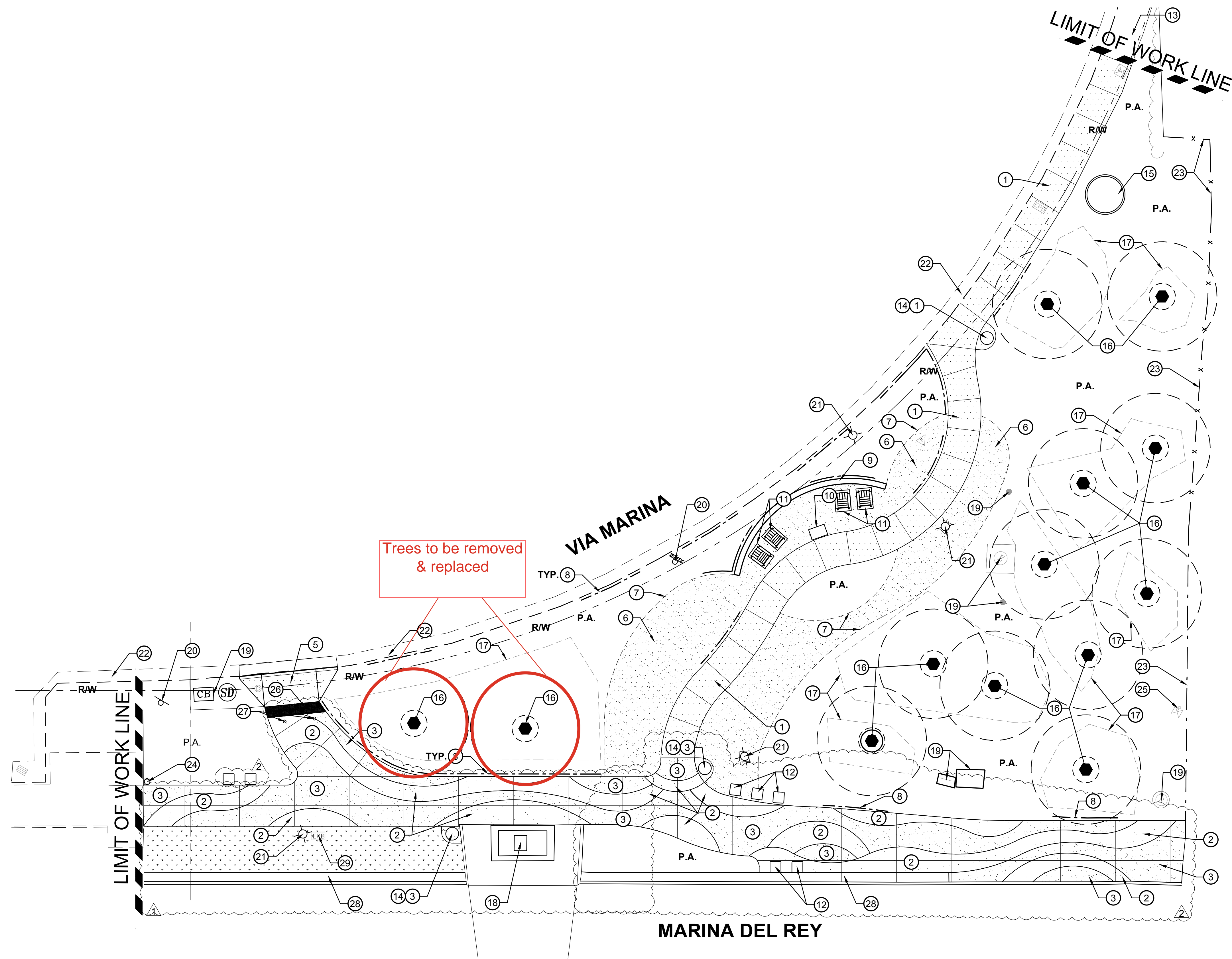
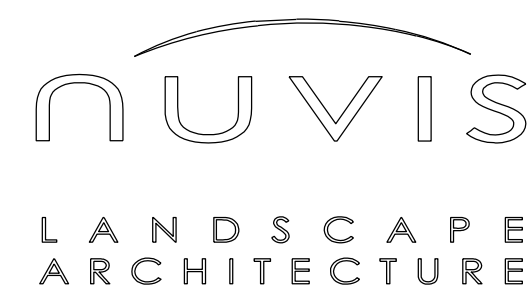


# CONSTRUCTION LEGEND

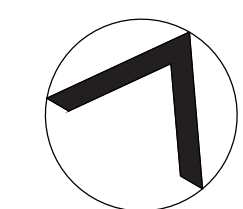
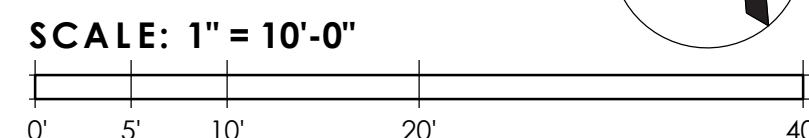
- ① CONSTRUCT PEDESTRIAN WALKWAY  
COLOR: NATURAL GRAY  
FINISH: MEDIUM BROOM  
REFER TO DETAIL 'A AND D', SHEET LC-2 FOR CONSTRUCTION PAVING DETAIL.
- ② CONSTRUCT PEDESTRIAN PAVEMENT  
COLOR: SHAW AND SONS SAMPLE #SS22-560  
REFER TO DETAIL 'A AND D', SHEET LC-2 FOR CONSTRUCTION PAVING DETAIL.
- ③ CONSTRUCT PEDESTRIAN PAVEMENT  
COLOR: SHAW AND SONS SAMPLE #SS22-559  
REFER TO DETAIL 'A AND D', SHEET LC-2 FOR CONSTRUCTION PAVING DETAIL.
- ④ 6" WIDE NATURAL GRAY CONCRETE BANDING - REFER TO DETAIL 'B', SHEET LC-2
- ⑤ NEW CONCRETE DRIVEWAY RAMP - PER CIVIL PLANS
- ⑥ STABILIZED DECOMPOSED GRANITE - REFER TO DETAIL 'D', SHEET 'LC-3'  
COLOR: GRAPHITE GRAY
- ⑦ STAINLESS STEEL EDGING - REFER TO DETAIL 'A', SHEET 'LC-3'
- ⑧ ROOT BARRIER - REFER TO DETAIL 'E', SHEET 'LC-3'
- ⑨ SEDIMENTARY CONCRETE WALL - REFER TO DETAIL 'C', SHEET 'LC-3'
- ⑩ SEDIMENTARY CONCRETE PODIUM AND RELOCATED MONUMENT PLAQUE - REFER TO DETAIL 'B', SHEET 'LC-3'
- ⑪ LOUNGE CHAIR - LANDSCAPEFORM  
MODEL: AMERICANA  
COLOR: SUNSET ORANGE, SURFACE MOUNTED ONTO CONCRETE PAD WITH STAINLESS STEEL WEDGE BOLTS. REFER TO DETAIL 'E', SHEET 'LC-2'
- ⑫ BENCH - QCP  
MODEL: STONE PRODUCT NUMBER: Q2STONE18B  
COLOR: FRENCH GRAY, MOUNTED INTO CONCRETE PAVING WITH QCP PROVIDED ANCHOR BOLTS. CONTRACTOR SHALL PROVIDE CONCRETE PAD REFER TO DETAIL 'F', SHEET 'LC-2'
- ⑬ EXISTING CONCRETE SIDEWALK
- ⑭ RELOCATED TRASH RECEPTACLE SURFACE MOUNT ONTO CONCRETE PAD WITH STAINLESS STEEL BOLTS
- ⑮ VERTICAL MONOLITH SHALL REMAIN AND BE PROTECTED
- ⑯ EXISTING TREES TO REMAIN AND BE PROTECTED
- ⑰ EXISTING TREE ROOT ZONES TO REMAIN AND BE PROTECTED
- ⑱ EXISTING MONUMENT TO REMAIN AND BE PROTECTED
- ⑲ EXISTING UTILITIES TO REMAIN AND BE PROTECTED IN PLACE
- ⑳ EXISTING SIGNS TO REMAIN AND BE PROTECTED
- ㉑ EXISTING LIGHT POLE/STREET POLES TO REMAIN AND BE PROTECTED
- ㉒ EXISTING CURB AND GUTTER TO REMAIN AND BE PROTECTED
- ㉓ EXISTING FENCE TO REMAIN AND BE PROTECTED
- ㉔ PET WASTE BAG DISPENSER - REFER TO DETAIL 'F', SHEET 'LC-3'
- ㉕ EXISTING BACKFLOW, REFER TO IRRIGATION PLANS
- ㉖ CAST IN PLACE ADA TACTILE SYSTEMS, AVAILABLE FROM ACCESS TACTILE SYSTEMS, 2 ROWS OF 12"X12" TACTILE, 1-888-679-4022, OR APPROVED EQUAL. FINAL LOCATION OF TILE SHALL BE REVIEWED AND APPROVED PRIOR TO CONSTRUCTION. REFER TO NOTE 17, FOR MORE INFORMATION.
- ㉗ REMOVABLE BOLLARDS - 6" DIA. GRAY BOLLARD WITH SLEEVE AND LOCK, AVAILABLE FROM SETON, 833-966-0128 OR APPROVED EQUAL. FINAL LOCATION OF SHALL BE REVIEWED AND APPROVED PRIOR TO CONSTRUCTION. REFER TO NOTE 17, FOR MORE INFORMATION.
- ㉘ EXISTING MOW CURB
- ㉙ RELOCATED ELECTRICAL PULL BOX AND WIRES TO APPROXIMATE LOCATION



DRAFTER: J. GUADARRAMA  
 DESIGNER: T. MUNOZ  
 CHECKER: T. MUNOZ  
 CADD PROJECT FILE NAME:



REVIEWED LAND DEVELOPMENT DIVISION  
 BY \_\_\_\_\_ ROAD AND GRADING SECTION DATE \_\_\_\_\_



DATE	MARK	DESCRIPTION
10/17/24	②	REVISED CONCRETE PAVING LAYOUT
9/26/24	①	REVISED RECONSTRUCTION LIMITS
REVISIONS		



PERRY A. CARDOZA  
 PROJECT ENGINEER

LOS ANGELES COUNTY PUBLIC WORKS

## AUBREY AUSTIN PARK IMPROVEMENT LANDSCAPE LANDSCAPE CONSTRUCTION PLAN

DWG XX-X-XXX.X PD XXXXXXX SHEET LC-1 OF 20

UNOFFICIAL AND SUBJECT TO CHANGE  
DATE: 05-09-2023