



LOS ANGELES COUNTY  
**COASTAL RESILIENCE**  
**STAKEHOLDER MEETING**

September 23, 2024

# COUNTYWIDE LAND ACKNOWLEDGMENT

As Adopted by the County of Los Angeles Board of Supervisors on November 1, 2022

The County of Los Angeles recognizes that we occupy land originally and still inhabited and cared for by the Tongva, Tataviam, Serrano, Kizh, and Chumash Peoples. We honor and pay respect to their elders and descendants—past, present, and emerging—as they continue their stewardship of these lands and waters. We acknowledge that settler colonization resulted in land seizure, disease, subjugation, slavery, relocation, broken promises, genocide, and multigenerational trauma.

This acknowledgment demonstrates our responsibility and commitment to truth, healing, and reconciliation and to elevating the stories, culture, and community of the original inhabitants of Los Angeles County. We are grateful to have the opportunity to live and work on these ancestral lands. We are dedicated to growing and sustaining relationships with Native peoples and local tribal governments, including (in no particular order) the

- Fernandeano Tataviam Band of Mission Indians
- Gabrielino Tongva Indians of California Tribal Council
- Gabrieleno/Tongva San Gabriel Band of Mission Indians
- Gabrieleño Band of Mission Indians—Kizh Nation
- San Manuel Band of Mission Indians
- San Fernando Band of Mission Indians

To learn more about the First Peoples of Los Angeles County, please visit the Los Angeles City/County Native American Indian Commission website at [lanaic.lacounty.gov](http://lanaic.lacounty.gov).



# Agenda

- This meeting is being recorded
- This meeting is interactive! Stay muted until your turn to speak
- Meeting materials will be available on the website

<https://beaches.lacounty.gov/coastal-resilience/>

- Questions and comments can be sent via Email [coastalresilience@bh.lacounty.gov](mailto:coastalresilience@bh.lacounty.gov)



01 Purpose of the Meeting

02 Background

03 Coastal Resilience Projects Update

04 Living Shoreline Demonstration Projects

05 Discussion / Feedback

06 Next Steps – Project Schedule

# Purpose of the Meeting

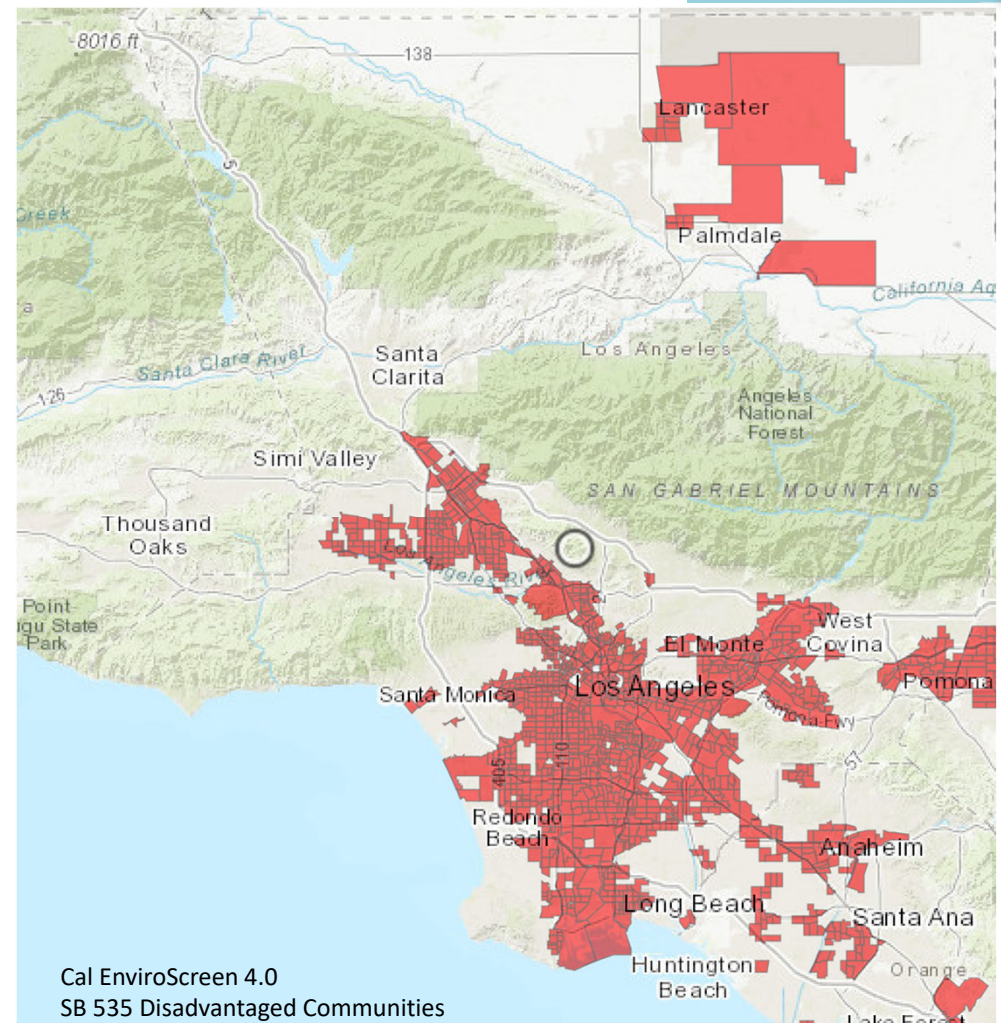
## 01 Purpose of the Meeting

- Share coastal resilience projects update
- Review County's Living Shoreline Demonstration Projects
- Solicit feedback from stakeholders
- Review project schedule



# Beach Preservation and Equity

- LA County beaches attract > **70 million** visitors annually
- Generate between **\$1.3 billion** and **\$1.6 billion** for the local economy
- Most popular **recreational destination** in Southern California, in the U.S. and around the world
- Public access to the beach is important, especially to residents of inland communities
- Goal: everyone has access to our beaches, regardless of race, social class, gender, disability status, or other characteristics



# Board of Supervisors' Motion: Coastal Resilience Strategy, Beneficial Reuse of Sediment, and Deploying Living Shorelines

- Motion co-authored by Chair Horvath and Supervisor Mitchell
- Adopted on November 7, 2023
  - Outreach and fundraising strategy for deployment of living shorelines consistent with 2023 Coastal Resilience Study
    - Federal, State, and foundation funding targets
    - Coalition of partners available to participate in regular convenings
  - Strategy for beneficial reuse of sediment from Flood Control District facilities
  - Strategy for beneficial reuse of dredged marina and ocean sediment
  - Staffing or other resources needed to implement the strategies



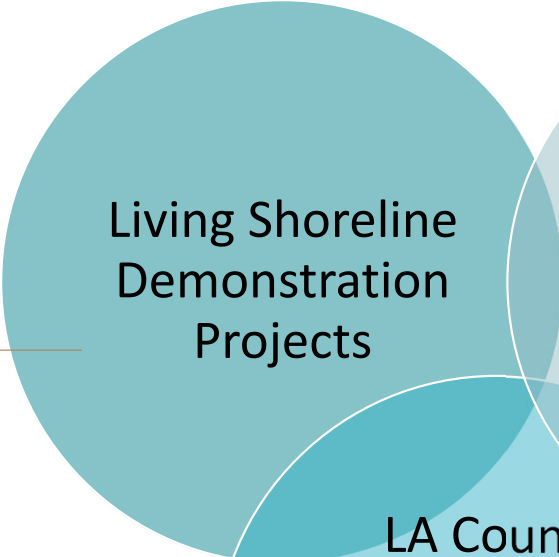
Sediment at Devil's Gate Reservoir



# Coastal Resilience Initiative Update

**PLANNING PHASE**

Feasibility Study in progress. Estimated to be completed in Spring 2025.



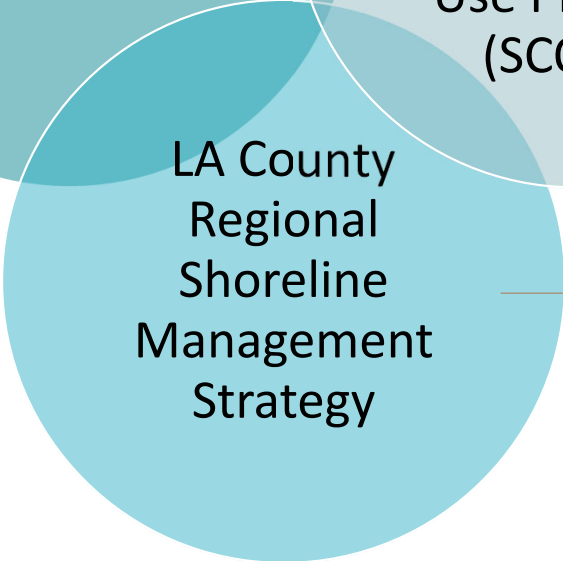
Living Shoreline  
Demonstration  
Projects



Sand  
Compatibility  
and  
Opportunistic  
Use Program  
(SCOUP)

**PLANNING PHASE**

Establish 5 pre-approved sites for relatively small beach nourishment projects (up to 150k cubic yards per year) using opportunistically available sand sources, such as those generated from upland land development projects, harbor maintenance dredging projects, and flood control maintenance operations. Estimated to be completed in early 2027.



LA County  
Regional  
Shoreline  
Management  
Strategy

**COMING SOON! (~Oct '24)**

Develop a regional coalition of stakeholders and prepare a strategic plan to facilitate implementation of regional shoreline management activities for the Los Angeles County coast.

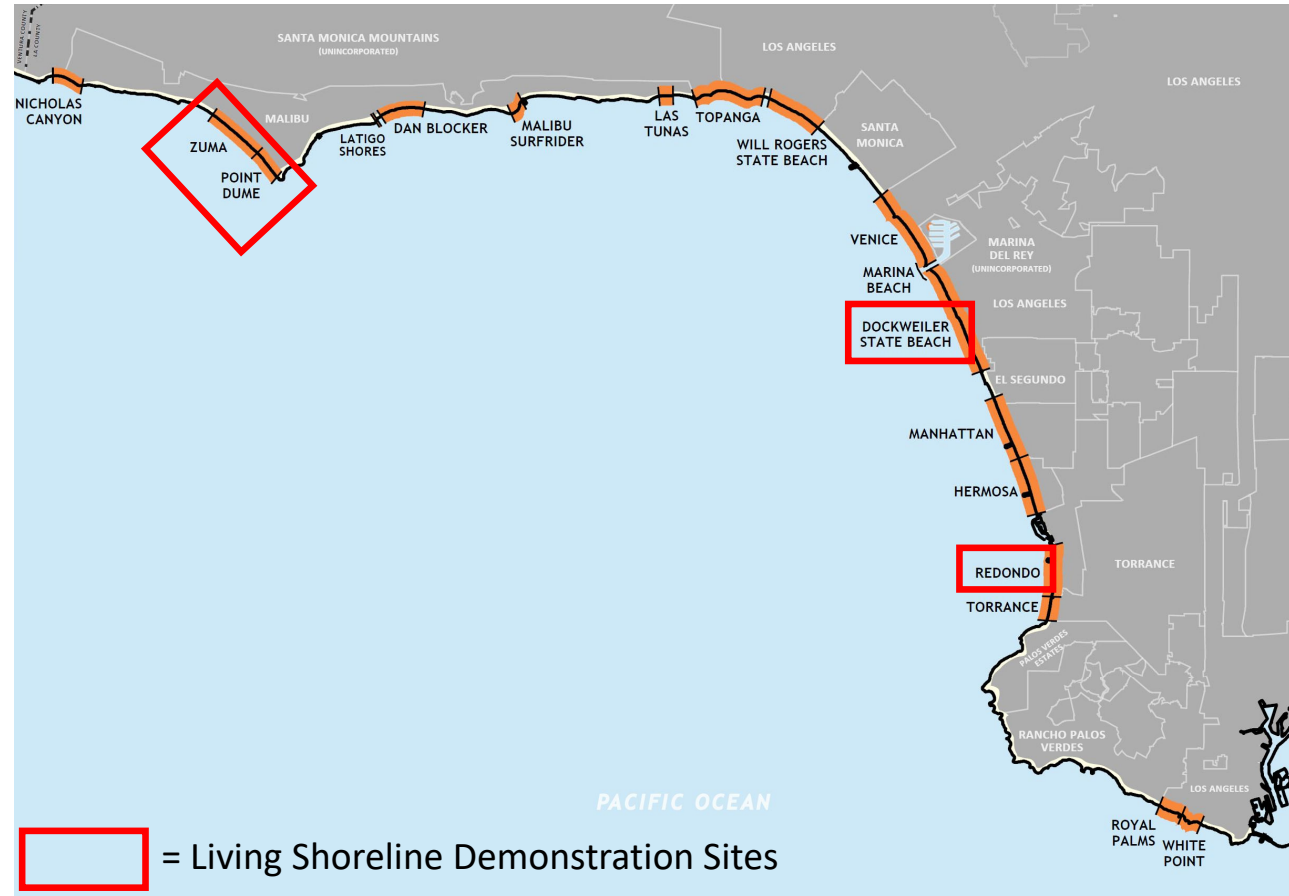


# Living Shoreline Demonstration Projects

04 Demonstration Projects

## 2023 Coastal Resilience Study

- Assessed vulnerability to existing coastal hazards and sea level rise (SLR) at County-operated beaches
- Identified **3 locations** to deploy living shoreline projects designed to increase resilience of the most vulnerable beaches and preserve and enhance public access

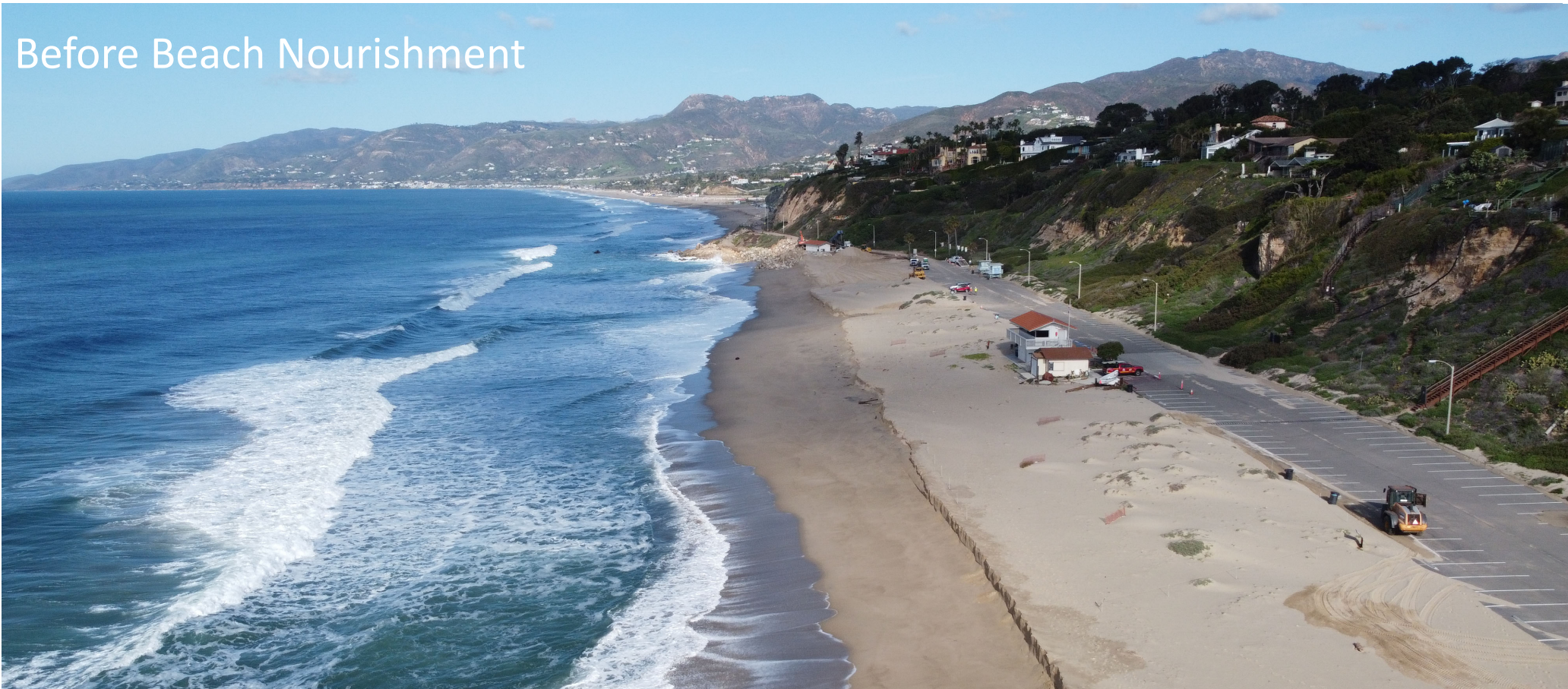




# Living Shoreline: Conceptual Design

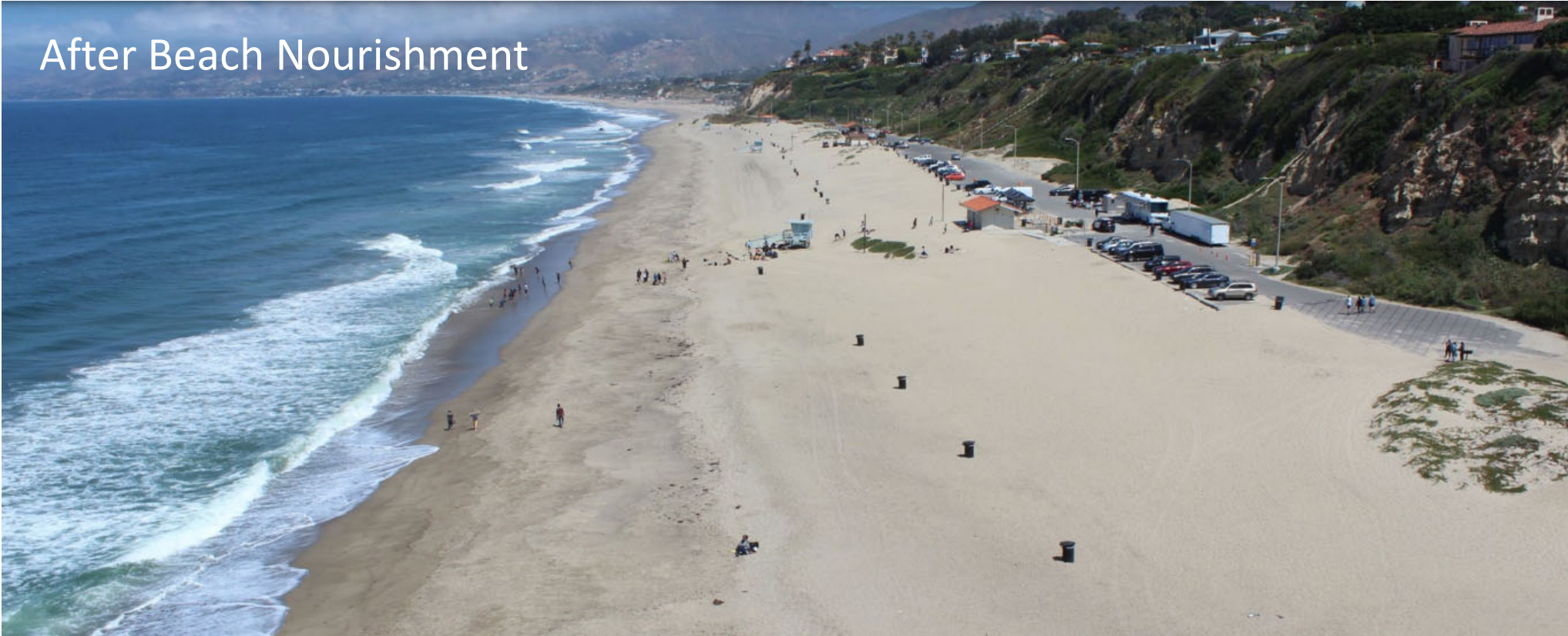
04 Demonstration Projects

Before Beach Nourishment



# Living Shoreline: Conceptual Design

04 Demonstration Projects



# Living Shoreline: Conceptual Design

04 Demonstration Projects

After Dune Installation



# Zuma & Point Dume: Living Shoreline

04 Demonstration Projects

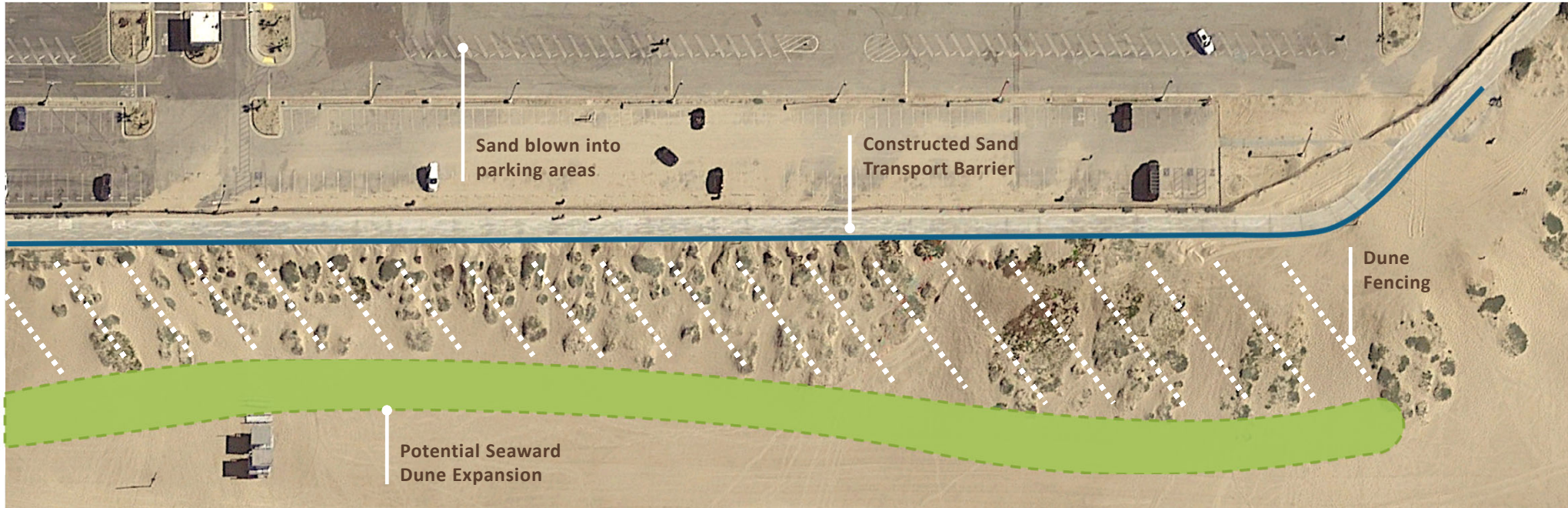


- **Beach nourishment:** Add sand to Zuma Beach to widen the entire beach between the headlands of Lechuza Point and Point Dume
- **Living Shoreline:** After beaches are wide, install dunes to retain sand at Zuma and Point Dume Beaches
- Post-meeting survey feedback: Living breakwater/offshore reef idea off of Point Dume Beach?



# Dockweiler: Dune Habitat Enhancement

04 Demonstration Projects



- **Barrier:** Prevent sand buildup along bikeway and parking areas
- **Dune Fencing:** Trap sand and encourage dune growth on the beach



Example: K-rail barrier at Zuma Beach



# Redondo: Nourishment & Dune Habitat

04 Demonstration Projects



- Beach Nourishment: Add sand to widen the beach
- Dune Restoration
- Green Groin: Install a groin along the pier
- Post-meeting survey feedback: Is the groin necessary?

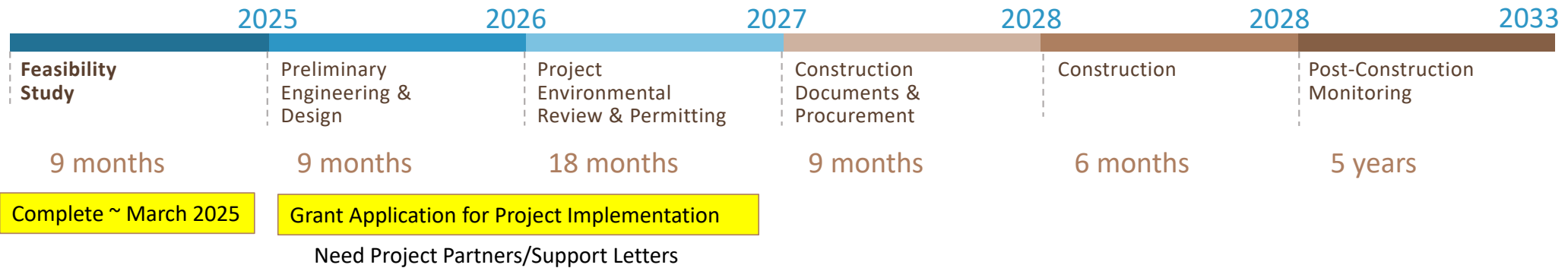


Example: Econcrete

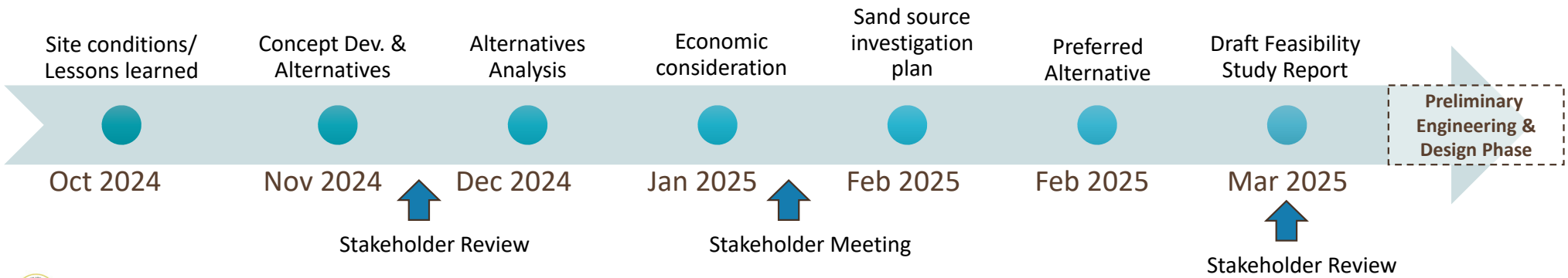


# Project Schedule

06 Next Steps



## Feasibility Study Schedule



# Stay Involved!

06 Next Steps

- Contact [coastalresilience@bh.lacounty.gov](mailto:coastalresilience@bh.lacounty.gov)
  - Questions or comments
  - Want to be our project funding partner
  - Want to help with community outreach
- Sign up for the coastal resilience stakeholder group email at <https://beaches.lacounty.gov/coastal-resilience/>

Any comments or feedback?

