



LOS ANGELES COUNTY

COASTAL RESILIENCE STAKEHOLDER MEETING

FEBRUARY 28, 2024

COUNTYWIDE LAND ACKNOWLEDGMENT

As Adopted by the County of Los Angeles Board of Supervisors on November 1, 2022

The County of Los Angeles recognizes that we occupy land originally and still inhabited and cared for by the Tongva, Tataviam, Serrano, Kizh, and Chumash Peoples. We honor and pay respect to their elders and descendants—past, present, and emerging—as they continue their stewardship of these lands and waters. We acknowledge that settler colonization resulted in land seizure, disease, subjugation, slavery, relocation, broken promises, genocide, and multigenerational trauma.

This acknowledgment demonstrates our responsibility and commitment to truth, healing, and reconciliation and to elevating the stories, culture, and community of the original inhabitants of Los Angeles County. We are grateful to have the opportunity to live and work on these ancestral lands. We are dedicated to growing and sustaining relationships with Native peoples and local tribal governments, including (in no particular order) the

- Fernandeano Tataviam Band of Mission Indians
- Gabrielino Tongva Indians of California Tribal Council
- Gabrieleno/Tongva San Gabriel Band of Mission Indians
- Gabrieleño Band of Mission Indians—Kizh Nation
- San Manuel Band of Mission Indians
- San Fernando Band of Mission Indians

To learn more about the First Peoples of Los Angeles County, please visit the Los Angeles City/County Native American Indian Commission website at lanaic.lacounty.gov.



Poll #1

What is your affiliation?



Agenda

- This meeting is being recorded
- Meeting materials will be available on the website
- Questions and comments can be sent via Email after the meeting

<https://beaches.lacounty.gov/coastal-resilience/>

coastalresilience@bh.lacounty.gov



01 Purpose of the Meeting

02 Background

03 Overview of the Coastal Resilience Study

04 DBH's Demonstration Projects

05 Funding Opportunities

06 Next Steps

Purpose of the Meeting

01 Purpose of the Meeting

- Share County's Coastal Resilience Strategy and Projects
- Expand the network of project partners and stakeholders
 - Solicit feedback on project design and planning documents
 - Pursue grant funding opportunities
 - Community outreach



LA County Beaches are Precious!

02 Background

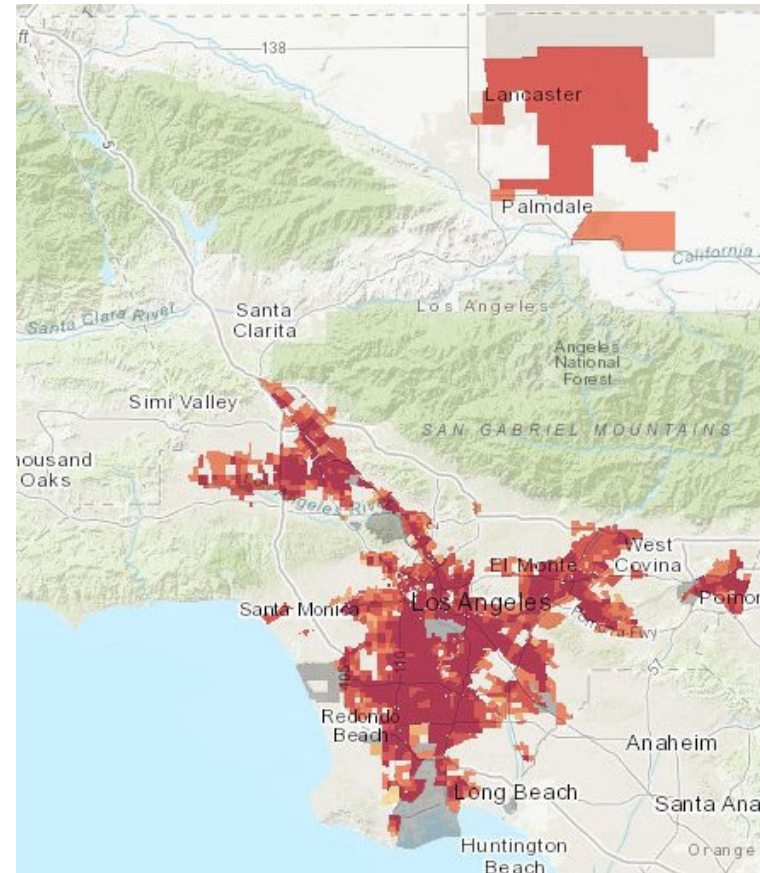
- Attract > **70 million** visitors annually.
- Generate between **\$1.3 billion** and **\$1.6 billion** for the local economy.
- Most popular **recreational destination** in Southern California, in the U.S. and around the world.



Beach Preservation and Equity

02 Background

- Goal: everyone has access to our beaches, regardless of race, social class, gender, disability status, or other characteristics
- Public access to the beach is important, especially to residents of inland communities



CalEnviroScreen 4.0

Disadvantaged
Communities
(SB535)

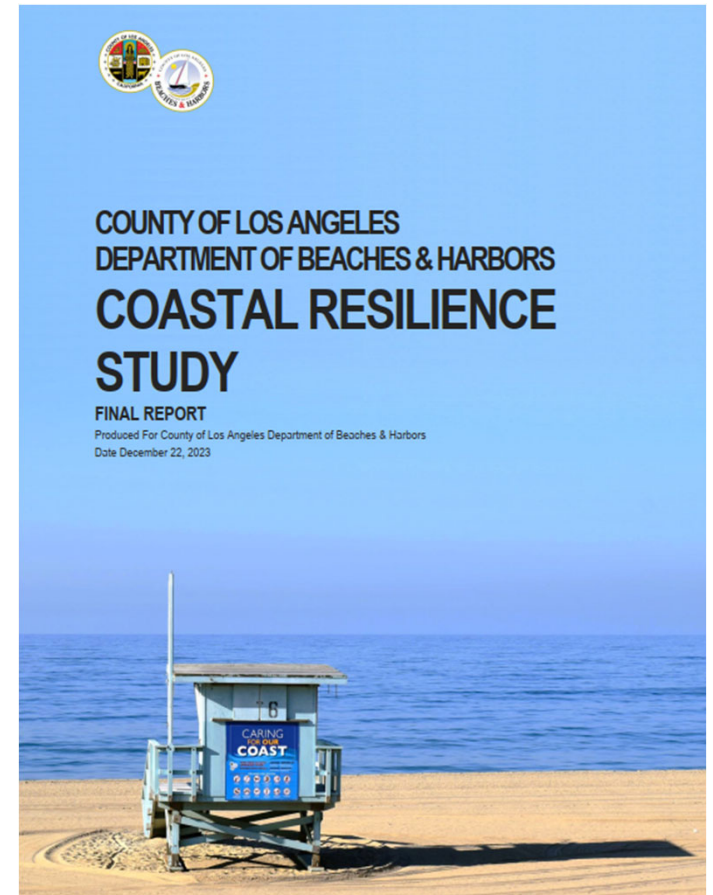


Coastal Resilience Study (2023)

03 Coastal Resilience study

Goals

- Assess vulnerability to existing coastal hazards and sea level rise (SLR)
- Identify pilot projects through an equity lens
- Increase resilience of the most vulnerable beaches



Decision Matrix

03 Coastal Resilience study

Group	Group Score	Group Factors
Existing Physical Beach Conditions	50	<ul style="list-style-type: none"> - Average Beach Width - Minimum Beach Width - Erosion Rate
Future Physical Beach Conditions	10	<ul style="list-style-type: none"> - 0.5 m Sea Level Rise Vulnerability - 1.0 m Sea Level Rise Vulnerability
Resources and Amenities	20	<ul style="list-style-type: none"> - Restroom Facilities - Bike Path - Picnic Tables - Beach Volleyball Courts - Pier - Snack Bar / Concessions Stand - Lifeguard Buildings - Fire Pit - Basketball Court - Promenade - Surf Break - Fishing Location - Ecological Attractions - Maintenance Yards - Youth Centers - Family Friendly Amenities
Use	20	<ul style="list-style-type: none"> - Average Daily Attendance - Parking - Ease of Access
Total	100	



Coastal Resilience Study: Result

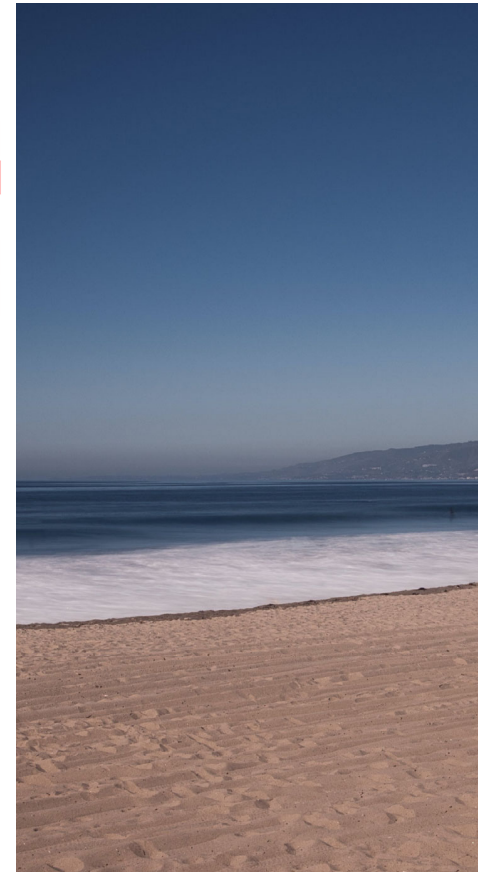
03 Coastal Resilience study

Zuma & Point Dume North

Redondo South

Dockweiler Central

Beach	Existing Conditions	Future Conditions	Resources/Amenities	Use	Total	Ranking
	Score (50 max)	Score (10 max)	Score (20 max)	Score (20 max)		
Zuma	39.6	8.3	9.4	18.7	76.0	1
Redondo	39.6	8.3	12.4	14.0	74.3	2
Malibu Surfrider	50.0	8.3	3.5	10.0	71.9	3
Point Dume	37.5	10.0	5.3	17.3	70.1	4
Dockweiler SB	29.2	5.0	16.5	17.3	68.0	5
Dan Blocker	43.8	10.0	2.4	11.3	67.4	6
Las Tunas	43.8	10.0	2.9	9.3	66.0	7
Topanga	37.5	8.3	5.3	10.0	61.1	8
Nicholas Canyon	39.6	8.3	3.5	8.7	60.1	9
Will Rogers SB	25.0	5.0	12.9	15.3	58.3	10
Manhattan	29.2	3.3	12.4	13.3	58.2	11
Latigo Shores	33.3	10.0	2.9	11.3	57.6	12
Venice	22.9	3.3	12.9	17.3	56.5	13
Torrance	22.9	5.0	11.2	16.0	55.1	14
Hermosa	22.9	3.3	8.2	13.3	47.8	15
Royal Palms	22.9	3.3	6.5	12.7	45.4	16
Marina Beach	22.9	5.0	2.4	14.7	44.9	17
White Point	22.9	3.3	3.5	12.7	42.4	18
Point Fermin	22.9	3.3	2.4	10.7	39.3	19



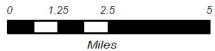
Demonstration Projects

04 Demonstration Projects

COUNTY OF LOS ANGELES

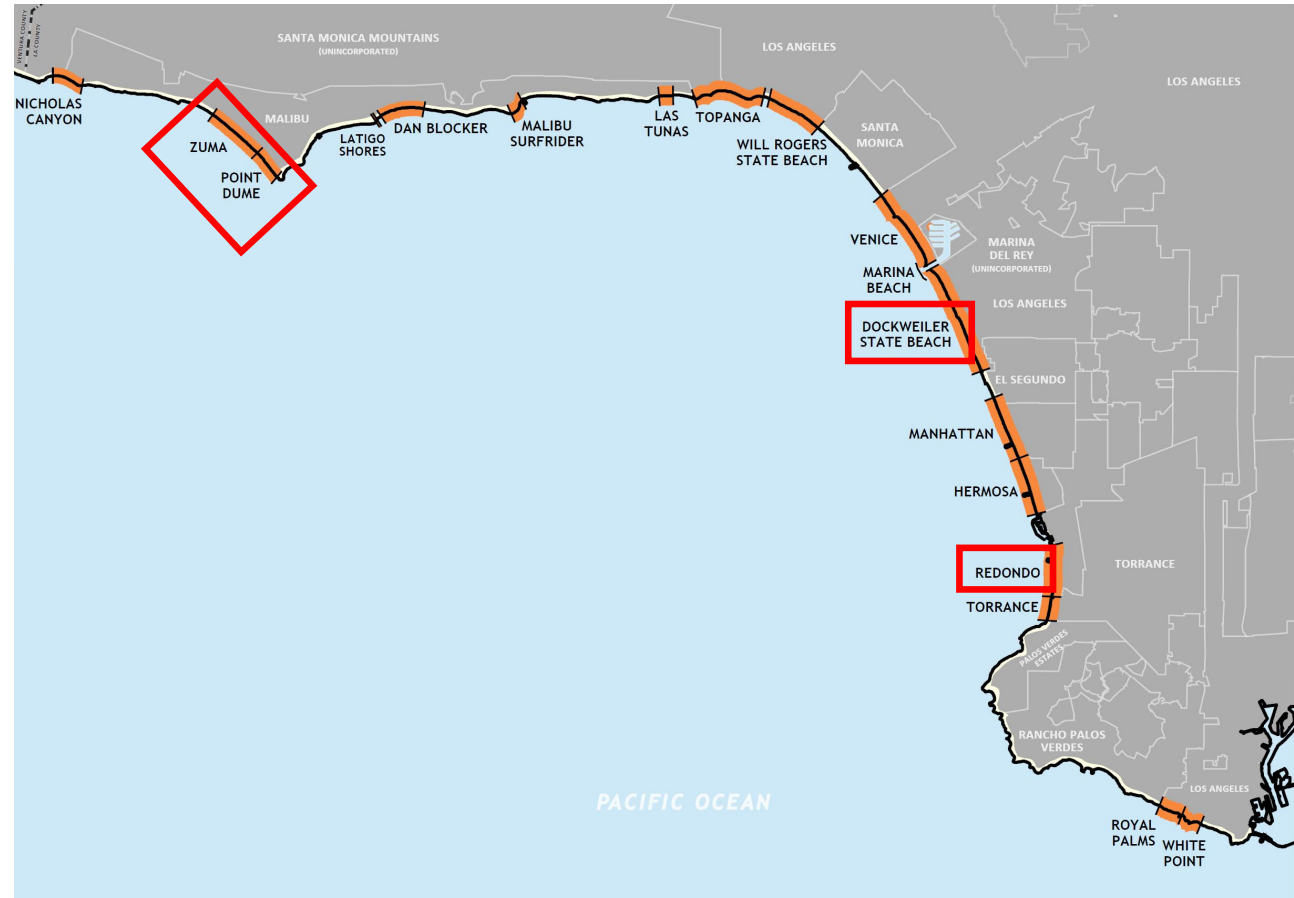
COUNTY-OPERATED BEACHES

BEACH	OWNED BY	LENGTH*			AREA*
		feet	miles	acres	
NICHOLAS CANYON	COUNTY	3,590	0.7	44	
ZUMA	COUNTY	8,980	1.7	95	
POINT DUME	COUNTY	5,280	1	29	
LATIGO SHORES	COUNTY	220	0.1	1.9	
DAN BLOCKER	COUNTY	5,810	1.1	15	
MALIBU SURFRIDER	COUNTY	2,220	0.4	8.3	
LAS TUNAS	COUNTY	1,640	0.3	1.9	
TOPANGA	COUNTY	5,280	1	20	
WILL ROGERS	STATE	15,310	2.9	103	
VENICE (EXCEPT PIER/RESTROOMS)	CITY OF LOS ANGELES	12,670	2.4	129	
MARINA BEACH	COUNTY	1,370	0.3	5.9	
DOCKWEILER	STATE	18,480	3.8	254	
MANHATTAN (EXCEPT PIER)	COUNTY	10,560	2	77	
HERMOSA (VERY LIMITED)	CITY OF HERMOSA BEACH	9,500	1.8	78	
REDONDO (EXCEPT PIER)	COUNTY	8,450	1.6	51	
TORRANCE	COUNTY	1,800	0.3	18	
ROYAL PALMS	COUNTY	3,850	0.7	21	
WHITE POINT	COUNTY	4,070	0.8	28	
		119,080	23	980	



*Measurements are approximate.

Los Angeles County Department of Beaches and Harbors, Planning Division (Updated 7/21/2021)



Living Shoreline: Conceptual Design

04 Demonstration Projects

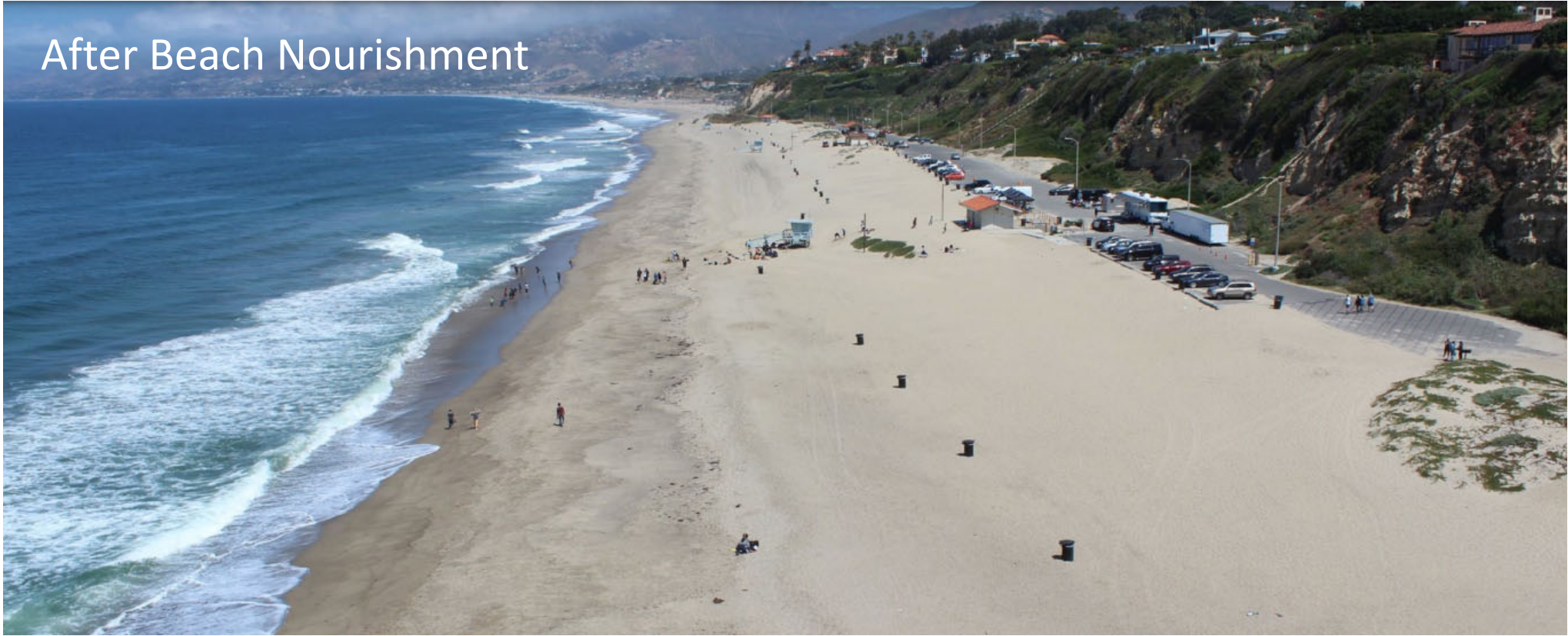
Before Beach Nourishment



Living Shoreline: Conceptual Design

04 Demonstration Projects

After Beach Nourishment



Living Shoreline: Conceptual Design

04 Demonstration Projects

After Dune Installation



Living Shoreline: Conceptual Design

04 Demonstration Projects

Sand Fencing



Source: <https://coastalscience.noaa.gov/>



Zuma & Point Dume: Living Shoreline

04 Demonstration Projects

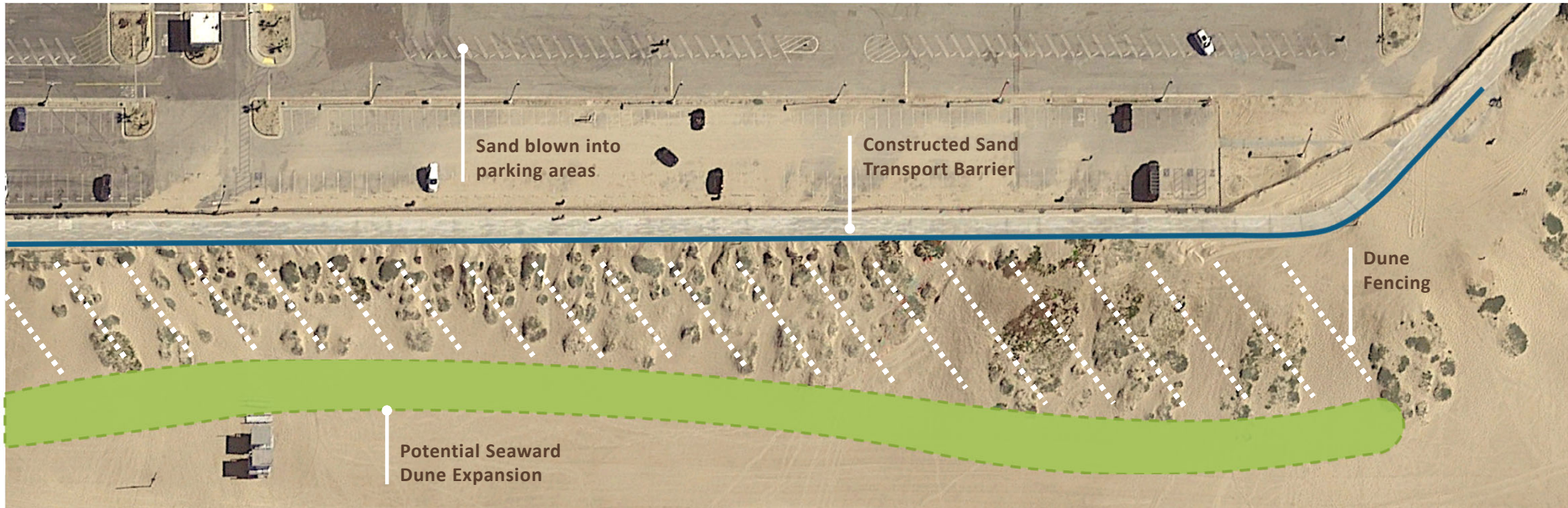


- **Beach nourishment:** Add sand to Zuma Beach to widen the entire beach between the headlands of Lechuza Point and Point Dume
- **Living Shoreline:** Install dunes to retain sand longer at Zuma and Point Dume Beaches



Dockweiler: Dune Habitat Enhancement

04 Demonstration Projects



- **Barrier:** Prevent sand buildup along bikeway and parking areas
- **Dune Fencing:** Trap sand and encourage dune growth on the beach



Redondo: Nourishment & Dune Habitat

04 Demonstration Projects



- **Beach Nourishment:** Add sand to widen the beach
- **Dune Restoration**
- **Green Groin:** Install a groin along the pier
 - Retain sand longer
 - Increase habitat benefits by using ecological material finish



Project Schedule

04 Demonstration Projects



We are here



2025

Feasibility
Study

12 months

Preliminary
Engineering &
Design

9 months

Project
Environmental
Review & Permitting

18 months

Construction
Documents &
Procurement

9 months

Construction

6 months

Post-Construction
Monitoring

5 years



Poll #2

Which project are you most interested in?

- Zuma / Point Dume Beach
- Dockweiler State Beach
- Redondo Beach



5

Funding Opportunities



Select Funding Opportunities

05 Funding Opportunities

Federal



Transformational Habitat Restoration and Coastal Resilience Grants



Environmental and Climate Justice Community Change Program

State of California



Division of Boating and Waterways

California Public Beach Restoration Grant
California Shoreline Erosion Control Grant



SB1 Grant Program – SLR Adaptation (Track 1 and 2)



Governor's Office of Planning and Research

California Regional Resilience Grant Program
Adaptation Planning Grant Program



Wildlife Conservation Board

California Habitat Enhancement and Restoration Program



Climate Ready
Explore the Coast

Foundation



NFWF

National Coastal Resilience Fund



Spotlight on Grant Programs

05 Funding Opportunities



SB1 Grant Program by OPC



Transformational Habitat Restoration & Coastal Resilience Grants by NOAA

FUNDING	Up to \$10 million in funding	Up to \$25 million in funding
TIMELINE	Track 2: Mid- 2024/ Late- 2024	Aug. 2024/ Nov. 2024
FOCUS AREAS	<ul style="list-style-type: none"> - Funding for coastal communities to develop consistent SLR adaptation plans - Track 1: SLR Adaptation Planning; - Track 2: SLR Implementation Projects 	Protecting communities and ecosystems from the impacts of climate change
POTENTIAL FIT	Zuma/Point Dume, Dockweiler Beach, or Redondo Beach under Track 2 (implementation)	Zuma/Point Dume and Redondo Beach
MATCHING	Not required	Not required, but cost-sharing is considered more competitive
PARTNERSHIPS	California Native American tribes highly encouraged	Nonprofits and letters of support are encouraged



Strategies for Successful Grant Funding

05 Funding Opportunities

Understanding the **priorities** of **funding agencies** will help **assess** the **competitiveness** of DBH projects for state and federal grants



Resiliency/
Climate Change



Equity



Partnership



Planning &
Public
Involvement



Local Share of
Funding



Cost
Effectiveness



Regional /
National
Significance



Project
Readiness



Economic
Opportunity

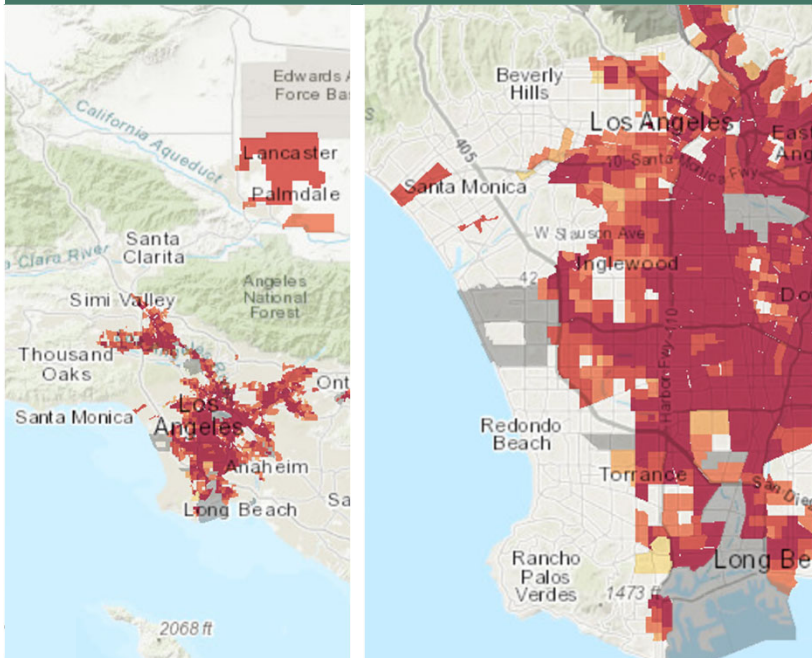


CalEnviroScreen 4.0

05 Funding Opportunities



CalEnviroScreen 4.0

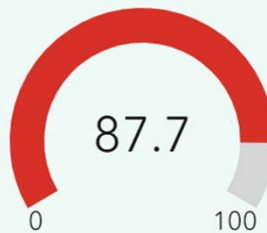


Tools for identifying benefitting, impacted, and disadvantaged communities

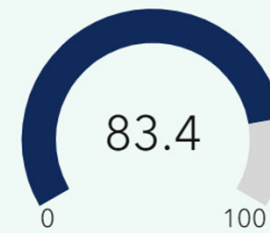
1,173

census tracts are selected

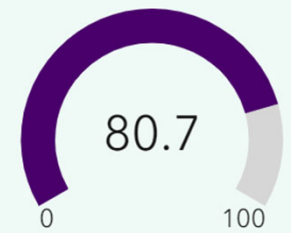
Average CalEnviroScreen 4.0 Percentile



Average Pollution Burden Percentile



Average Population Characteristics Percentile



Partnerships are Essential

Partners can support grant application in some of the following ways:

- Project Delivery Role
- Financial support
- Community engagement efforts
- Letters of support
- Other time and material support



05 Funding Opportunities



DBH Next Steps

06 Next Steps

- **Short term:**

- Consultant contracts (planning and design) for 3 demonstration projects
- Secure funding
- Outreach and partnership

- **Long Term:**

- Project Implementation
- County-wide Implementation Plan



Stay Involved!

06 Next Steps

- Contact coastalresilience@bh.lacounty.gov
 - Questions or comments
 - Want to be our project funding partner
 - Want to help with community outreach
- Post-meeting survey next week
- FAQ will be available at the end of March
- More stakeholder meetings to come so stay tuned!
 - Discuss project specific elements and processes
 - Discuss grant opportunities and partnerships
- Spread the word! Sign up for the coastal resilience stakeholder group email at <https://beaches.lacounty.gov/coastal-resilience/>

