

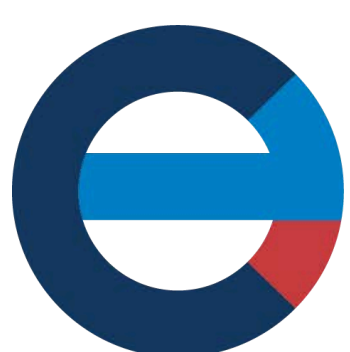
# WHAT IS MOBILITY JUSTICE?

Addresses historical and current injustices in transportation and movement, particularly for vulnerable communities

Ensures that everyone has the freedom to move, access resources, and participate fully in society without fear or discrimination

Challenges systems that limit mobility through new, equitable approaches to transportation planning and policy

Photo by Mayra Beltran Vasquez



County of Los Angeles  
**Anti-Racism,  
Diversity,  
& Inclusion**

CEO.LACOUNTY.GOV/ARDI | ARDI@CEO.LACOUNTY.GOV



# MOBILITY JUSTICE CONCEPTS

## TRANSPORTATION

- Safe, affordable, and accessible multimodal transportation networks
- Robust and affordable shared transit, vanpools, bikes, and scooters
- Solutions addressing subregions with distinct needs

Photo by Mayra Beltran Vasquez



County of Los Angeles  
Anti-Racism,  
Diversity,  
& Inclusion

CEO.LACOUNTY.GOV/ARDI | ARDI@CEO.LACOUNTY.GOV



# MOBILITY JUSTICE CONCEPTS

## PUBLIC HEALTH & SAFETY

- Promote active lifestyles and connective public spaces
- Decarbonized goods movement corridors
- Community-centered street design and non-policing safety strategies

Photo by Mayra Beltran Vasquez



County of Los Angeles  
Anti-Racism,  
Diversity,  
& Inclusion

CEO.LACOUNTY.GOV/ARDI | ARDI@CEO.LACOUNTY.GOV



# MOBILITY JUSTICE CONCEPTS

## ACCESS TO OPPORTUNITY

- Economic mobility through accessible job centers
- Jobs, local hiring, and living wages created through transit development
- Access to quality schools, libraries, childcare, health clinics, and markets

Photo by Mayra Beltran Vasquez



County of Los Angeles  
Anti-Racism,  
Diversity,  
& Inclusion

[CEO.LACOUNTY.GOV/ARDI](http://CEO.LACOUNTY.GOV/ARDI) | [ARDI@CEO.LACOUNTY.GOV](mailto:ARDI@CEO.LACOUNTY.GOV)



# MOBILITY JUSTICE CONCEPTS

## HOUSING

- Bring jobs and housing closer together
- Deeply affordable housing in all high opportunity zones and transit centers
- Residents and business not displaced by new transit development

Photo by Michael Owen Baker



County of Los Angeles  
Anti-Racism,  
Diversity,  
& Inclusion

CEO.LACOUNTY.GOV/ARDI | ARDI@CEO.LACOUNTY.GOV



# MOBILITY JUSTICE

## THE 5 Ds OF MOBILITY JUSTICE

# DECOLONIZE

**Center Indigenous land and communities in planning to end displacement and protect residents' rights.**

Adapted from People for Mobility Justice  
Photo by Mayra Beltran Vasquez



County of Los Angeles  
**Anti-Racism,  
Diversity,  
& Inclusion**

CEO.LACOUNTY.GOV/ARDI | ARDI@CEO.LACOUNTY.GOV



# MOBILITY JUSTICE

## THE 5 Ds OF MOBILITY JUSTICE

# DECONGEST

Ensure everyone has access to transportation and streets that support our full well-being and keep us alive.

Adapted from People for Mobility Justice  
Photo by Mayra Beltran Vasquez



County of Los Angeles  
Anti-Racism,  
Diversity,  
& Inclusion

CEO.LACOUNTY.GOV/ARDI | ARDI@CEO.LACOUNTY.GOV



# MOBILITY JUSTICE

## THE 5 Ds OF MOBILITY JUSTICE

# DECRIMINALIZE

Guarantee freedom of movement for BIPOC and undocumented people without fear of violence.

Adapted from People for Mobility Justice  
Photo by Mayra Beltran Vasquez



County of Los Angeles  
Anti-Racism,  
Diversity,  
& Inclusion

CEO.LACOUNTY.GOV/ARDI | ARDI@CEO.LACOUNTY.GOV



# MOBILITY JUSTICE

## THE 5 Ds OF MOBILITY JUSTICE

### DIGNIFY

Protect and support the well-being of all community residents.

Adapted from People for Mobility Justice  
Photo by Mayra Beltran Vasquez



County of Los Angeles  
**Anti-Racism,  
Diversity,  
& Inclusion**

CEO.LACOUNTY.GOV/ARDI | ARDI@CEO.LACOUNTY.GOV



# MOBILITY JUSTICE

## THE 5 Ds OF MOBILITY JUSTICE

### DREAM

**Empower BIPOC communities to lead and shape their environments through valued, resourced self-determination.**

Adapted from People for Mobility Justice  
Photo by Mayra Beltran Vasquez



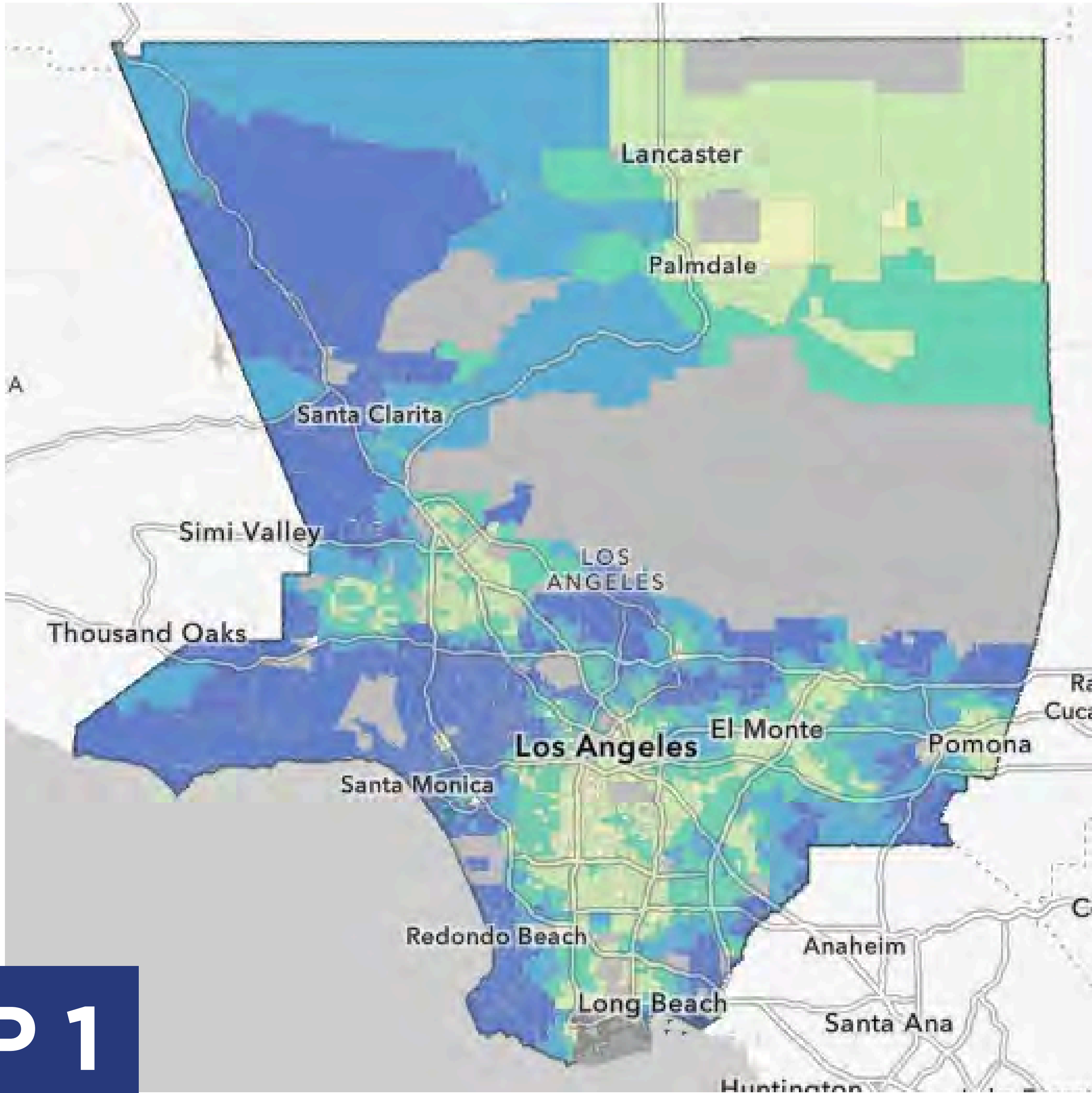
County of Los Angeles  
**Anti-Racism,  
Diversity,  
& Inclusion**

CEO.LACOUNTY.GOV/ARDI | ARDI@CEO.LACOUNTY.GOV



# MOBILITY JUSTICE

# MAPPING MOBILITY NEEDS



**MAP 1**

## Educational and Health Outcomes for Low-Income Families

-  Highest Resource
-  High Segregation & Poverty

More affluent neighborhoods provide the greatest educational and health opportunities for low-income families through jobs, green space, digital connectivity, healthcare, and other important resources.

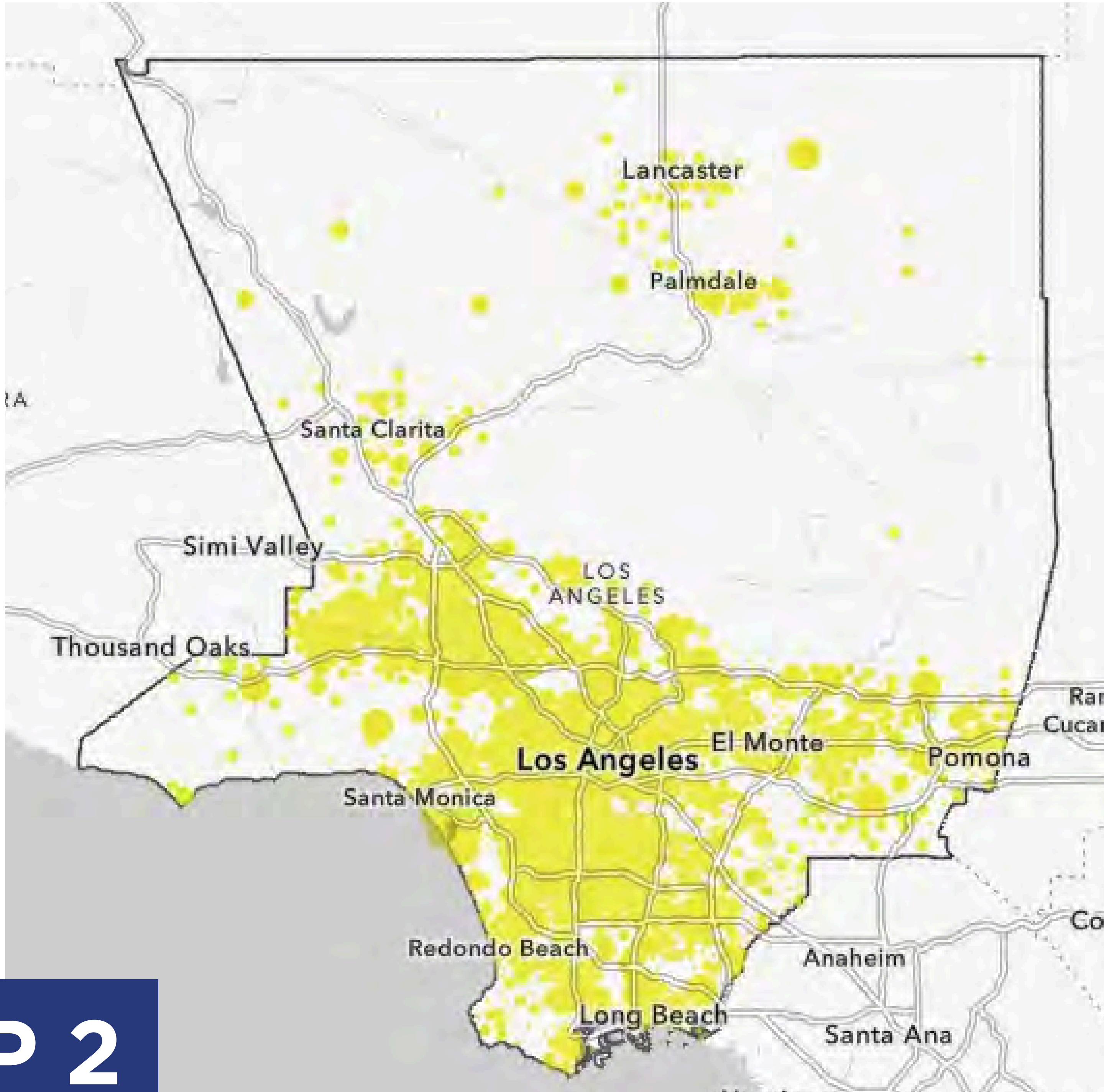


County of Los Angeles  
**Anti-Racism,  
Diversity,  
& Inclusion**



# MOBILITY JUSTICE

# MAPPING MOBILITY NEEDS



**MAP 2**

## Unemployment



Unemployment is highest in Los Angeles County where segregation and poverty are the highest, as shown in **MAP 1**.

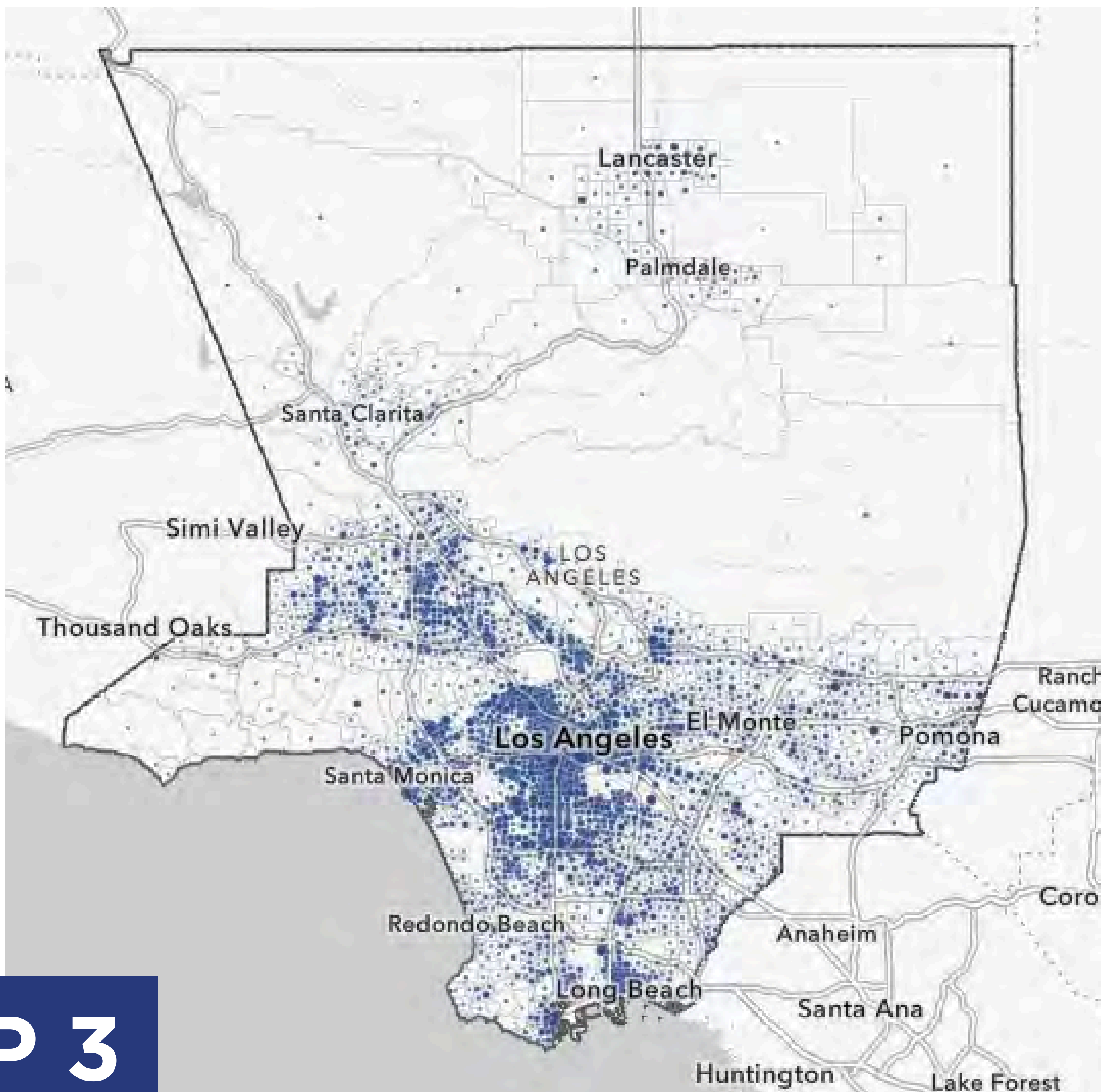


County of Los Angeles  
**Anti-Racism,  
Diversity,  
& Inclusion**



# MOBILITY JUSTICE

# MAPPING MOBILITY NEEDS



**MAP 3**

## Households Without Vehicles



The ability to move freely provided by vehicle ownership is most restricted in the areas where unemployment is highest (**MAP 2**) and where mobility is most critical to reach areas with the greatest health and educational resources (**MAP 1**).



County of Los Angeles  
**Anti-Racism,  
Diversity,  
& Inclusion**

CEO.LACOUNTY.GOV/ARDI | ARDI@CEO.LACOUNTY.GOV

