

COUNTY OF LOS ANGELES **CEO - ANTI-RACISM, DIVERSITY & INCLUSION INITIATIVE**
COMMUNITY INPUT ADVISORY BOARD MEMBERS - **2021-2022**



Brenda Aguilera
(she/her)

Brenda Aguilera is the Director of Community Transformation for Para Los Niños. As Director, Brenda is responsible for the oversight and development of First 5LA's Region 1 Best Start initiative. Brenda is also an instrumental thought partner in PLN's the newly launched Innovations II Initiative, funded by LA County's Department of Mental Health. Brenda has been involved with Best Start since 2011. Previous to joining Para Los Niños, she served as co-manager of the Native Green Gardening Cooperative in Los Angeles with El Instituto de Educación Popular del Sur de California (IDEPSCA). She also served as a consultant to the Asian Americans Advancing Justice and to the UCLA Labor Center, providing communications support.



Edward L. Anderson
(he/him)

Edward L. Anderson is a passionate social activist and ordained minister, who currently serves the historic McCarty Memorial Christian Church located in the West Adams neighborhood of Los Angeles. He also works for LA Voice(PICO) and is a Co-organizer for Trust Talks LA. Rev. Anderson is an active advocate for Black Lives Matter, a convener, and Co-Chair of the New Poor People's Campaign in California, and is a Bethany and Preston Taylor Fellow. He serves on the Board of Directors for Claremont School of Theology as well as Progressive Christians Uniting and served on Crossroads for Women Inc, Eastmont Community Center raising the voices of those who are forced to live along the margins of society. Rev. Anderson has been seen and heard on television, radio and is a published author.



Antoinette Andrews Bush
(she/her)

As Chief Transformation Officer, Antoinette Andrews Bush provides executive-level leadership for First 5 LA's strategic planning, organizational culture and diversity, equity and inclusion strategies, organizational learning, human resources and talent development. She also oversees the Office of Equity, Strategy, and Learning and the Human Resources and Talent Management teams. Prior to this role, Antoinette served as Director of the Communities Department for First 5 LA and worked with local organizations such as College Bound, Charles R. Drew University of Medicine & Science, The Imoyase Group, and the Southern Christian Leadership Conference.



Tamika Butler
(she/her and they/them)

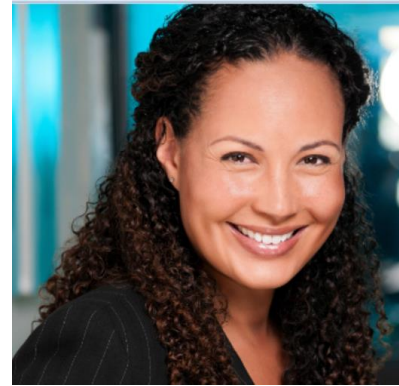
Tamika L. Butler is a national expert and speaker on issues related to the built environment, equity, anti-racism, diversity and inclusion, organizational behavior, and change management. As the Principal + Founder of Tamika L. Butler Consulting she focuses on shining a light on inequality, inequity, and social justice. She provides consulting, training, coaching, and public speaking for a wide range of organizations in the public and private sectors. Previously, Tamika served as the Director of Planning, California and the Director of Equity and Inclusion at Toole Design, Executive Director of the Los Angeles Neighborhood Land Trust, Executive Director of the Los Angeles County Bicycle Coalition (LACBC), Director of Social Change Strategies at Liberty Hill Foundation, and worked at Young Invincibles as the California Director.

COUNTY OF LOS ANGELES **CEO** - ANTI-RACISM, DIVERSITY & INCLUSION INITIATIVE
COMMUNITY INPUT ADVISORY BOARD MEMBERS - 2021-2022



Shawntwayne (Shawn) Cannon
(he/him)

Shawn Cannon is Chair of the City of Lancaster Social Equity Commission and began his career at Avid Tutor where the young activist-built relationships with hardworking educators who dedicated their lives to helping our children achieve higher learning, as well as personal enrichment, with little to no recognition. Now a father, Shawn's work is motivated by the vision of a growing community where everyone's place is solidified and works to bring a voice to those who are voiceless and solutions to inequities that bar student success. He, along with other local activists, worked with the City Council on the creation of the Social Equity Commission during the global unrest in summer of 2020. In his role as Commissioner and Chair of the new body, he is dedicated to bridging the gap between the community and their local government by building a coalition around the success of the next generation.



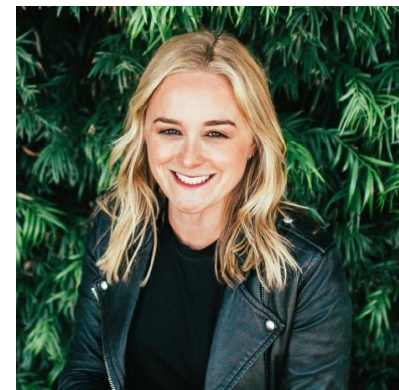
Teresa Chandler
(she/her)

Teresa Chandler is a Deputy City Manager for the City of Long Beach with the responsibility of elevating the City's coordinated efforts related to homelessness, violence prevention, and youth development. She also provides oversight and leadership to the City's Office of Civic Innovations and the Office of Equity. She most recently supported the team through a racial equity and reconciliation planning process to develop a City-wide plan to eliminate systemic racism by advancing racial equity in Long Beach. Teresa began her career with the City of Long Beach Department of Health and Human Services in 2015 as the City's Homeless Services Officer and soon after moved into the Human Services Bureau Manager position.



Maisie Chin
(she/her)

Maisie Chin is founding Executive Director and Co-Founder of CADRE (Community Asset Development Re-defining Education), an independent, grassroots parent membership organization in South Los Angeles comprised of Black and Latino parents/caregivers solidifying and advancing their leadership so that all children are rightfully educated regardless of where they live. A native Californian and first child of Chinese immigrants, Maisie has been a seasoned facilitative leader in the social justice movement for 28 years, dedicated to eliminating structural racism. Maisie recently concluded a decade of service as board member and vice-chair of the Schott Foundation for Public Education, and is a graduate of the Pahara-Aspen Fellowship.



Elizabeth (Lizzie) Cohen
(she/her)

Elizabeth (Lizzie) Cohen is Associate Director for the Center for Strategic Partnerships, a joint venture between Los Angeles County and philanthropy that works to help partners in both sectors achieve their shared goal of improving outcomes for children, youth and families using an equity lens. Lizzie leads the Center's Youth Development and Empowerment work, as well as the Center's faith-based recruitment efforts, working with partners to identify, build, and advance joint initiatives to better serve youth and families throughout the County. Lizzie has both private sector and political experience, formerly serving in the Office of Scheduling and Advance for President Barack Obama and working at Facing History and Ourselves, a major educational nonprofit organization.

COUNTY OF LOS ANGELES **CEO** - ANTI-RACISM, DIVERSITY & INCLUSION INITIATIVE
COMMUNITY INPUT ADVISORY BOARD MEMBERS - 2021-2022



Kathryn Inez Edwards, Ph.D.
(she/her)

Dr. Kathryn Edwards serves as Director of Equity, Diversity, and Inclusion for the Los Angeles County Office of Education (LACOE). In this role, she provides oversight for the overall organizational action plan for becoming an anti-racist organization. Dr. Edwards also serves as a member of the Los Angeles Unified School Districts' Human Relations, Diversity and Equity Commission and led the development of Supporting the African American Learner: A Guide for Transforming Beliefs, Systems and Practices for Black Students (2020). Previously, she has worked as a district office administrator in the Los Angeles Unified School District and the Pomona Unified School District and enjoyed a fifteen-year career in the private sector where she worked for Apple Computer and IBM.



Chandra Ford, Ph.D.
(she/her)

Dr. Chandra L. Ford is Professor of Community Health Sciences and Founding Director of the Center for the Study of Racism, Social Justice and Health in the UCLA Fielding School of Public Health. She is lead editor of *Racism: Science & Tools for the Public Health Professional* (APHA Press, 2019), which was named an Outstanding Academic Title for 2020 by the American Library Association's Choice magazine. Dr. Ford has received many teaching awards and several notable honors, including a Lifetime Achievement Award from the Association of Black Women Physicians. In 2016, she served on the National Academy of Medicine's Committee on Community-based Solutions to Promote Health Equity in the United States and was named co-chair of the Committee on Science of the American Public Health Association's Anti-Racism Collaborative.



Alex Furtado
(he/him)

Alex Furtado is a resilient and service-driven young man and will soon serve as a member of the County of Los Angeles Youth Commission. As a military veteran, Alex knows the value of teamwork and is excited to serve alongside his fellow commissioners. He is currently a board member of the Los Angeles Homeless Services Authority (LAHSA) as well as a Community Ambassador with Safe Place for Youth. He prides himself on advocating for youth in the foster care system and those experiencing homelessness. Alex is very passionate about expanding housing and supportive services across the county and hopes his story can encourage everyone he meets.



Kiki Ramos Gindler, J.D.
(she/her)

Kiki Ramos Gindler currently serves as the Chair of the Board of Directors of Center Theatre Group and is a member of the Board of Directors of the Los Angeles Opera. Kiki also serves on the Board of Directors of The Music Center Foundation. Kiki is a past member of the Board of Trustees of Pomona College, the Board of Directors of the Women's Refugee Commission, and the Board of Trustees of the Bilingual Foundation of the Arts. In recognition of her work to help establish low income housing for women and children, Ms. Gindler has received the State Bar of California Wiley W. Manuel Pro Bono Services Award.

COUNTY OF LOS ANGELES **CEO** - ANTI-RACISM, DIVERSITY & INCLUSION INITIATIVE
COMMUNITY INPUT ADVISORY BOARD MEMBERS - 2021-2022



Christian Green
(he/him)

Born in a prison cell to an incarcerated mother and an unknown father, Christian D. Green has overcome many obstacles rare, atypical and uncommon to others. Christian is a first generation, former foster youth, non-traditional graduate from Lancaster, California. He currently serves as a national ambassador on the U.S. Truth Racial Healing and Transformation Coalition (US TRHT) and serves as the Campaign Coordinator for Cancel the Contract A.V. In 2018, he also released his first book, *Uncovering Your Worth: From Legal Custody to UCLA*, which has allowed Christian to speak all over the nation about his own experiences within the child welfare system.



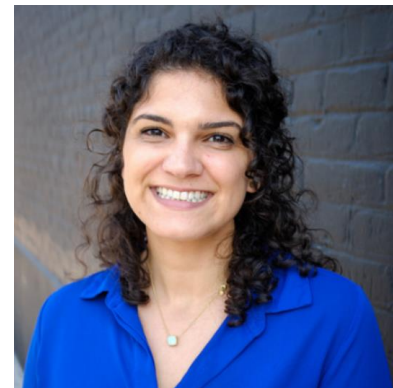
Amanda Hernandez
(she/her)

Amanda Hernandez is a brilliant and kind advocate for youth experiencing foster care and will soon serve as a member of the County of Los Angeles Youth Commission. As a current employee with the Department of Consumer and Business Affairs, Amanda will provide vital insights on navigating county departments and systems. Amanda was nominated by Supervisor Kathryn Barger and is excited to explore county policies and programs and is ready to partner with various departments and organizations.



Tamu Jones
(she/her)

Tamu Jones is Managing Director for The California Endowment's Los Angeles Region and statewide justice reinvestment strategy. Since joining The California Endowment in 2011, Tamu has promoted health equity by directing grant-making portfolios to support grassroots power building, policy advocacy and systems change at the local, regional, and statewide level. Previously, she was Senior Program Manager with the statewide justice team and for more than six years, oversaw the grantmaking strategy for the South Los Angeles Building Healthy Communities initiative. Prior to joining The California Endowment, Tamu was a program officer at the California Community Foundation and worked for eight years in public health with the City of Pasadena Public Health Department and Contra Costa County Health Services Department.



Lyric Kelkar
(she/her)

Lyric Kelkar is the Policy Director at Inclusive Action for the City, where she leads research and policy advocacy for better access to government systems and protections for underserved communities across LA. She works in multiple coalition spaces such as the LA Street Vendor Campaign, Healthy LA Coalition, and SPARCC LA table. Pulling from her Masters in Design and Urban Ecologies, she applies a design-thinking approach to research social challenges in the built environment and drives equitable policy and community development solutions to counteract exclusion within the field of urban planning.

COUNTY OF LOS ANGELES **CEO** - ANTI-RACISM, DIVERSITY & INCLUSION INITIATIVE
COMMUNITY INPUT ADVISORY BOARD MEMBERS - 2021-2022



Nomsa Khalfani, Ph.D.
(she/her)

As Chief Strategy + Equity Officer, Nomsa Khalfani provides strategic leadership, management, and guidance to develop and implement strategic programs and initiatives. Before joining Essential Access, Nomsa held several leadership roles at St. John's Well Child and Family Center. Nomsa is a graduate of the Southern California Coro Women in Leadership Program, the Blue Shield of California Foundation Clinic Leadership Institute Emerging Leaders Program, and the California Women's Foundation Women's Policy Institute. She currently serves as a member of the LA City Health Commission, LA County Community Prevention and Population Health Taskforce, and the African American Infant and Maternal Mortality Steering Committee. In 2020, Nomsa was recognized as one of Southern CA's Top 50 Diverse Leaders.



Kelly King
(she/her)

As Senior Program Officer for Education at the California Community Foundation, Kelly King manages programs and partnerships that support a more equitable education system in Los Angeles County, with a special focus on postsecondary access and attainment. Before joining CCF in 2015, King was executive vice president at Focusing Philanthropy where she managed a national portfolio of philanthropic investments that included education, health access, and workforce development. King began her career in the education and nonprofit sector at the Scripps College Academy. As director from 2008-2013, she led the program to national recognition.



Miguel Martinez
(he/him)

Miguel Martinez is the Manager of the HIV Services Program and the Center for Trans Youth Health and Development at Children's Hospital Los Angeles. He has more than two decades of experience in care for adolescents and young adults living with HIV or who are transgender or gender nonconforming. He leads HIV prevention, case management, and care projects for adolescents and young adults, and he has been a Co-Investigator on numerous Adolescent Trials Network research endeavors. Under his leadership in partnership with the Medical Director, Dr. Johanna Olson-Kennedy, the Center for Trans Youth Health and Development has grown to over 1,000 active patients.



Manuel Pastor, Ph.D.
(he/him)

Dr. Manuel Pastor is a Distinguished Professor of Sociology and American Studies & Ethnicity at the University of Southern California (USC). He currently directs the USC Equity Research Institute (formerly known as Program for Environmental and Regional Equity (PERE) and the Center for the Study of Immigrant Integration (CSII). Pastor is the Turpanjian Chair in Civil Society and Social Change at USC, and his research has generally focused on issues of the economic, environmental, and social conditions facing low-income urban communities – and the social movements seeking to change those realities. His latest book is titled, *State of Resistance: What California's Dizzying Descent and Remarkable Resurgence Means for America's Future*.

COUNTY OF LOS ANGELES **CEO** - ANTI-RACISM, DIVERSITY & INCLUSION INITIATIVE
COMMUNITY INPUT ADVISORY BOARD MEMBERS - 2021-2022



Kaci Patterson
(she/her)

Kaci Patterson is Owner and Principal of Social Good Solutions, a boutique consulting firm in Los Angeles, CA. Kaci brings over 20 years of experience in the nonprofit and philanthropic sectors and is widely recognized for her expertise in equity-centered grantmaking and community-driven design. In her role as Senior Director for the LA Partnership for Early Childhood Investment, Kaci organizes philanthropic engagement for the LA County African American Infant and Maternal Mortality Prevention Initiative, a public-private-community partnership working to advance healthy births for Black mothers and families in LA County. She is also the Founder and Chief Architect of the Black Equity Collective, serves on the board of Social Justice Partners Los Angeles, Tides Advocacy and is an appointed state commissioner serving in the CA Department of Consumer Affairs.



Laura Raymond
(she/her)

Laura Raymond is the Director of the Alliance for Community Transit - Los Angeles (ACT-LA), a coalition of 38 organizations. She sits on the steering committee of the Coalition for a Just LA and currently directs the coalition's equitable planning program, its city, county and statewide policy work, and a transit justice organizing and advocacy effort. Over the last 20 years, she has been active in a wide range of policy campaigns, civil and human rights projects and has built and coordinated numerous social justice coalitions. Immediately prior to ACT-LA, she spent 6 years managing advocacy campaigns with the Center for Constitutional Rights.



Sharon Speed, Ph.D.
(she/her)

Dr. Shannon Speed is a tribal citizen of the Chickasaw Nation of Oklahoma. She is Director of the American Indian Studies Center (AISC) and Professor of Gender Studies and Anthropology at UCLA. Her ethnographic work has been primarily in Mexico and the United States, on topics ranging from indigenous politics to activist research. Dr. Speed has published seven books and edited volumes, including her most recent award-winning book, *Incarcerated Stories: Indigenous Women Migrants and Violence in the Settler Capitalist State* (UNC Press 2019), and a volume co-edited with Dr. Lynn Stephen entitled, *Heightened States of Injustice: Activist Research on Indigenous Women and Violence*. Dr. Speed recently served a three-year period as President of the Native American and Indigenous Studies Association (NAISA).



Matthew Trujillo, Ph.D.
(he/him)

Matt serves as the Senior Manager of Strategic Initiatives for Advancement Project California where he develops and manages organization-wide campaigns and initiatives. In his role he works with Advancement Project staff across the organization and community stakeholders to develop and implement policy frameworks, advocacy campaigns, and cross-programmatic initiatives. Prior to joining the Advancement Project, Matt was a program officer in the Research-Evaluation-Learning unit at the Robert Wood Johnson Foundation where he developed and managed research and program grants to advance health equity across the U.S.