



Board of Supervisors Health and Mental Health Cluster Agenda Review Meeting

DATE: April 1, 2026

TIME: 11:45 a.m. – 1:30 p.m. **Please note: Late Start Time**

MEETING CHAIR: Jazmine Garcia-Delgadillo, 1ST Supervisorial District

CEO MEETING FACILITATOR: Kieu-Anh King

THIS MEETING IS HELD UNDER THE GUIDELINES OF BOARD POLICY 3.055

To participate in the meeting in-person, the meeting location is:

Kenneth Hahn Hall of Administration
500 West Temple Street
Los Angeles, California 90012
Room 140

To participate in the meeting virtually, please call teleconference number:

1 (323) 776-6996 and enter the following: 330 628 704# or click here on a smartphone:

[Tel:+13237766996,330628704#](tel:+13237766996,330628704#)

[Click here to join the meeting](#) on Microsoft Teams

For Spanish Interpretation, the Public should send emails within 48 hours in advance of the meeting to ClusterAccommodationRequest@bos.lacounty.gov

Members of the Public may address the Health and Mental Health Services Meeting on any agenda item. One (1) minute is allowed for each item.

THIS TELECONFERENCE WILL BE MUTED FOR ALL CALLERS. PLEASE DIAL *6 TO UNMUTE YOUR PHONE WHEN IT IS YOUR TIME TO SPEAK.

11:30 AM: CS-1 CONFERENCE WITH LEGAL COUNSEL – EXISTING LITIGATION

(Subdivision d(1) of Government Code Section 54956.9)

Margarita Lopez v. Jenna Toki Nakagawa, M.D., et al.

Los Angeles Superior Court Case No.: 23CMCV01768

Department of Health Services

- I. Call to order

- II. Board Motion:
 - a. **SD2:** Creating Public-Facing Safety Net Dashboards to Track the Impact of H.R.1 and Other Health Policy Changes
- III. Items Continued from a Previous Meeting of the Board of Supervisors or from the Previous Agenda Review Meeting
- IV. Items not on the posted agenda for matters requiring immediate action because of an emergency situation, or where the need to take immediate action came to the attention of the Department subsequent to the posting of the agenda.
- V. Public Comment
- VI. Adjournment

IF YOU WOULD LIKE TO EMAIL A COMMENT ON AN ITEM ON THE HEALTH AND MENTAL HEALTH SERVICES CLUSTER AGENDA, PLEASE USE THE FOLLOWING EMAIL AND INCLUDE THE AGENDA NUMBER YOU ARE COMMENTING ON:

HEALTH_AND_MENTAL_HEALTH_SERVICES@CEO.LACOUNTY.GOV

MOTION BY SUPERVISOR HOLLY J. MITCHELL

April 14, 2026

Creating Public-Facing Safety Net Dashboards to Track the Impact of H.R.1 and Other Health Policy Changes

The County of Los Angeles (County) is home to the nation’s second-largest county health care system, the Department of Health Services (DHS), and the largest county mental health department, the Department of Mental Health (DMH). The County’s Department of Public Social Services (DPSS) manages the largest Medi-Cal enrollment in the State of California, and the Department of Public Health (DPH) is one of the largest public health departments in the nation.

DHS serves approximately 500,000 patients annually, regardless of insurance, income, or immigration status through a network of state-of-the-art treatment and research facilities, including Harbor-UCLA Medical Center, Los Angeles General Medical Center, Olive View-UCLA Medical Center, Rancho Los Amigos Rehabilitation Center, and the Ambulatory Care Network (ACN). The ACN operates 24 clinics across the County, including major centers such as the Martin Luther King Jr. Outpatient Center, the High Desert Regional Health Center, El Monte Comprehensive Health Center, and the San Fernando Health Center. The ACN is committed to providing world-class, compassionate health care that is safe and accessible to all patients, regardless of ability to pay.

Although DPH is not primarily responsible for providing direct healthcare services,

-MORE-

MOTION

Mitchell _____

Horvath _____

Hahn _____

Barger _____

Solis _____

MOTION BY SUPERVISOR HOLLY J. MITCHELL

April 14, 2026

Page 2

it plays a crucial safety-net role in delivering immunizations and in testing and treatment related to tuberculosis and sexually transmitted infections. DPH comprises 39 programs and multiple public health centers located throughout the County, serving its ten million residents.

DPSS administers Medi-Cal and additional essential safety net programs to millions of County residents, including CalFresh, CalWORKs, General Relief, the Cash Assistance Program for Immigrants, the Refugee Program, and In-Home Supportive Services.

H.R. 1 will result in significant reductions to critical health care and safety net funding across County health and social services departments, affecting thousands of current beneficiaries and destabilizing safety net hospitals. DHS anticipates a \$280 million loss in fiscal year 2025-26, and projects an annual deficit of approximately \$1.85 billion by fiscal year 2028-29, driven largely by Medicaid cuts. H.R. 1 is projected to result in approximately \$750 million per year in lost DHS revenue.

DPH projects a \$200 million to \$300 million reduction in federal and state funding. The department is forecasting a minimum \$24 million deficit this fiscal year, requiring clinic closures, personnel reassignments, and potential layoffs. Future deficits are expected to worsen as federal revenues decline.

Since the signing of H.R. 1, from July 2025 to February 2026, more than 200,000 County residents have lost full-scope Medi-Cal coverage. CalFresh has experienced similar declines, with over 100,000 individuals losing food assistance. These losses reflect the compounding effects of federal policy changes under H.R. 1, the expiration of COVID-era continuous coverage protections, and heightened fears regarding public charge rules.

In the face of threatened service reductions, lay-offs, and closures, it is critical that the public has timely and reliable access to information regarding impacts to the County's health and social services safety net. DPSS currently maintains a public-facing dashboard with monthly summary-level caseload data; however, additional data and analysis are necessary to understand the full scope of H.R. 1's impact. Early indicators point to disproportionate enrollment losses in certain geographic areas. Enhanced transparency

regarding enrollment trends, disenrollment patterns, and geographic disparities is essential to ensure the County can target interventions effectively and maintain equitable access to safety net services for vulnerable populations.

The Chief Executive Office's Chief Data Officer oversees the County's Information Hub, a cross-departmental data platform designed to advance a person-centered, 360-degree view of client services and improve care coordination and outcomes. Integrating public-facing safety net dashboards into a unified portal would provide the County with a centralized data-sharing system that is accessible and straightforward for policymakers, advocates, and County residents to navigate.

I THEREFORE MOVE THAT THE BOARD OF SUPERVISORS:

1. Direct the Director of the Department of Health Services (DHS), within 60 days, to add to its public-facing website, a dashboard that is updated monthly (or as it becomes available) and includes:
 - a. To the extent available, workload data from all County DHS facilities (each hospital and ambulatory care network site), including but not limited to visit volumes; wait times to be seen once patients arrive; wait times to receive specialty care appointments once requested; wait times for specialty care services once prescribed; and other quality and utilization metrics.
 - b. Visit volume broken down by specialty type.
 - c. Visit volume broken down by in-person and telephonic and/or virtual visits.
 - d. To the extent available, quality of care data, including compliance with federal and State standards, quality metrics, and patient experience scores.
2. Direct the Director of the Department of Public Health (DPH), within 60 days, to add to its public-facing website a dashboard that is updated monthly and includes clinic workload volumes, as well as patient cycle times and wait times, by service type and by clinic site.
3. Direct the Director of the Department of Mental Health (DMH), within 60 days, to add to its public-facing website a dashboard that is updated monthly and includes:
 - a. Workload data from DMH directly operated clinic-sites and outpatient programs (including Psychiatric Urgent Care Centers and Crisis Residential Treatment

- Programs), including client volumes; wait times for initial assessments and follow up appointments; and other service utilization metrics.
- b. Visit volume broken down by program, service type, and clinic-site (outpatient services, crisis services, specialty clinics), and by in-person versus telephonic and/or virtual encounters.
 - c. Data regarding access to care, including the average number of days from referral to first appointment across DMH directly operated programs.
4. Direct the Director of the Department of Public Social Services (DPSS), within 60 days, to add to its public-facing dashboard monthly updates that enable straightforward comparison of the following metrics across Supervisorial Districts, Service Planning Areas, office locations, and administered programs (CalFresh, Medi-Cal, CalWORKs, General Relief, Cash Assistance Program for Immigrants, Refugee Program, and In-Home Supportive Services) to the extent the data exists and is available:
- a. Application processing times in accordance with State reporting standards.
 - b. Caseload volumes.
 - c. Enrollment and disenrollment trends, with month-by-month comparisons.
 - d. To the extent available, program reach index rates (defined as the estimated percentage of eligible residents enrolled in each program).
 - e. Application approval and denial rates, including the top three reasons for denials.
5. Direct the Directors of DHS, DPH, DMH, and DPSS to ensure that each dashboard, directed in items 1 through 4, includes historical data beginning no later than January 1, 2025, so that policymakers and the public may assess pre-existing trends and attribute changes to specific policy events, including the implementation of H.R. 1.
6. Direct the Chief Executive Office's Chief Data Officer, in coordination with the Directors of DHS, DPH, DMH, and DPSS, to, within 90 days, report back in writing to the Board on the feasibility of integrating the dashboards described in directives 1 through 4 above into a unified, public-facing portal through the County's

MOTION BY SUPERVISOR HOLLY J. MITCHELL

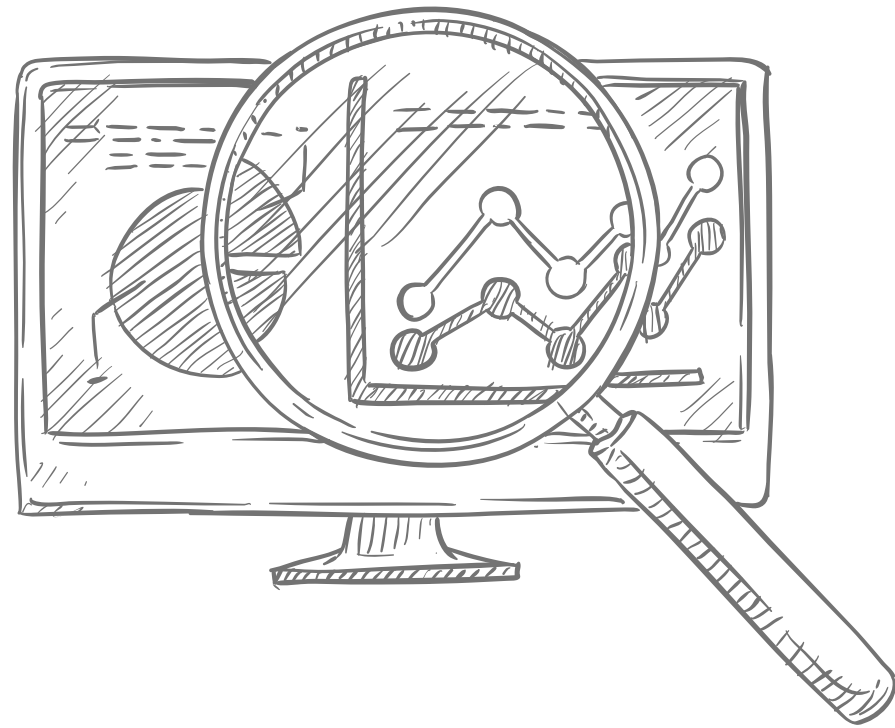
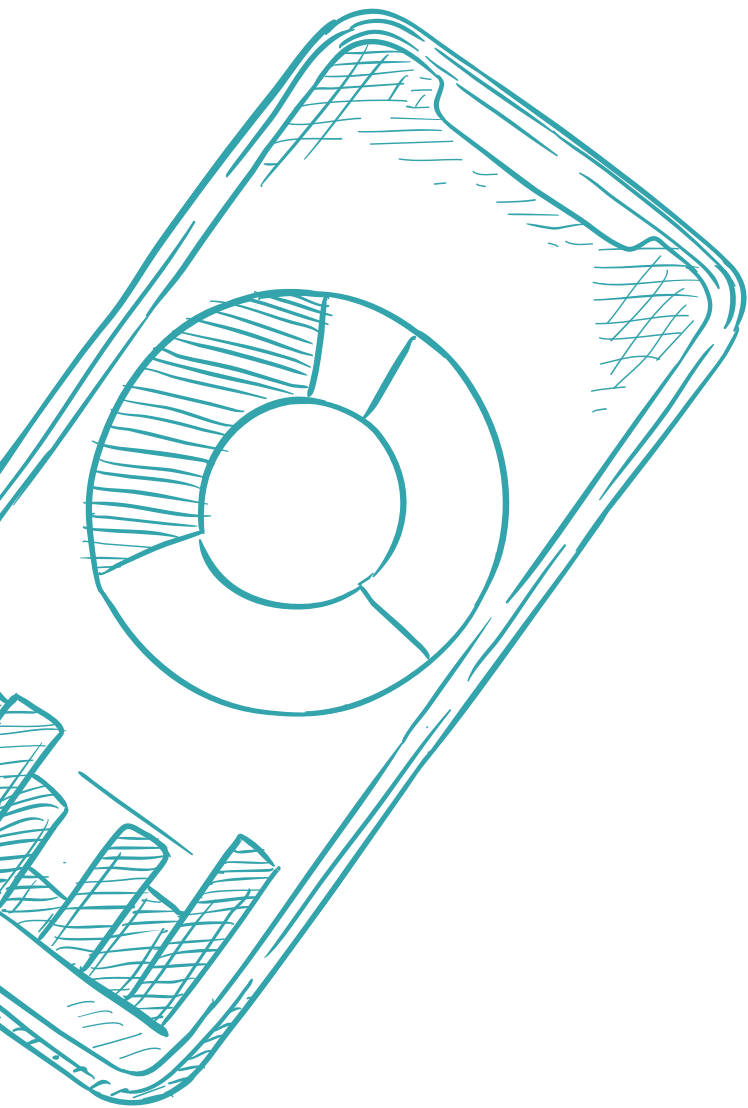
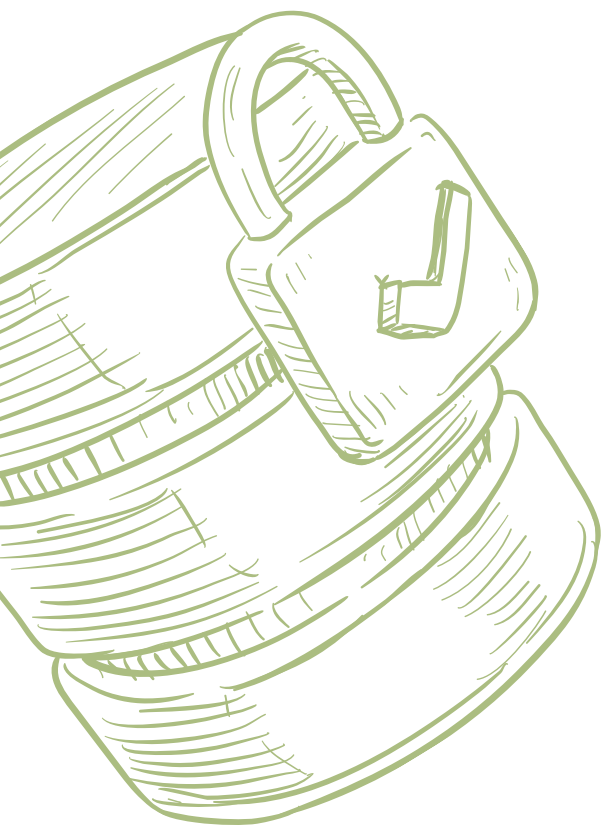
April 14, 2026

Page 5

Information Hub, and to provide findings and a proposed implementation timeline.

#

(YV/EAVG)

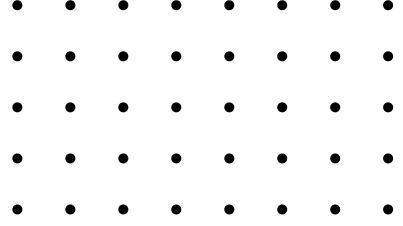



Creating Public-Facing Safety Net Dashboards


Tracking the Impact of H.R. 1 and Other Health Policy Changes

April 1, 2026





DHS
\$750M/yr
Projected revenue loss



DMH
Medi-Cal expenditures will increase due to H.R. 1 impacts



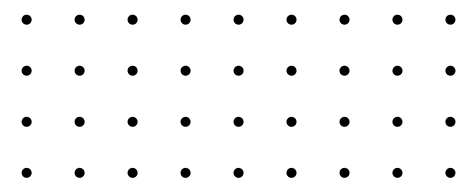
DPH
\$200 - 300M
Reduction in federal and state funding



DPSS
Counties are responsible for front-line implementation of H.R. 1. Lower federal share for administrative costs.

Los Angeles County's Safety Net

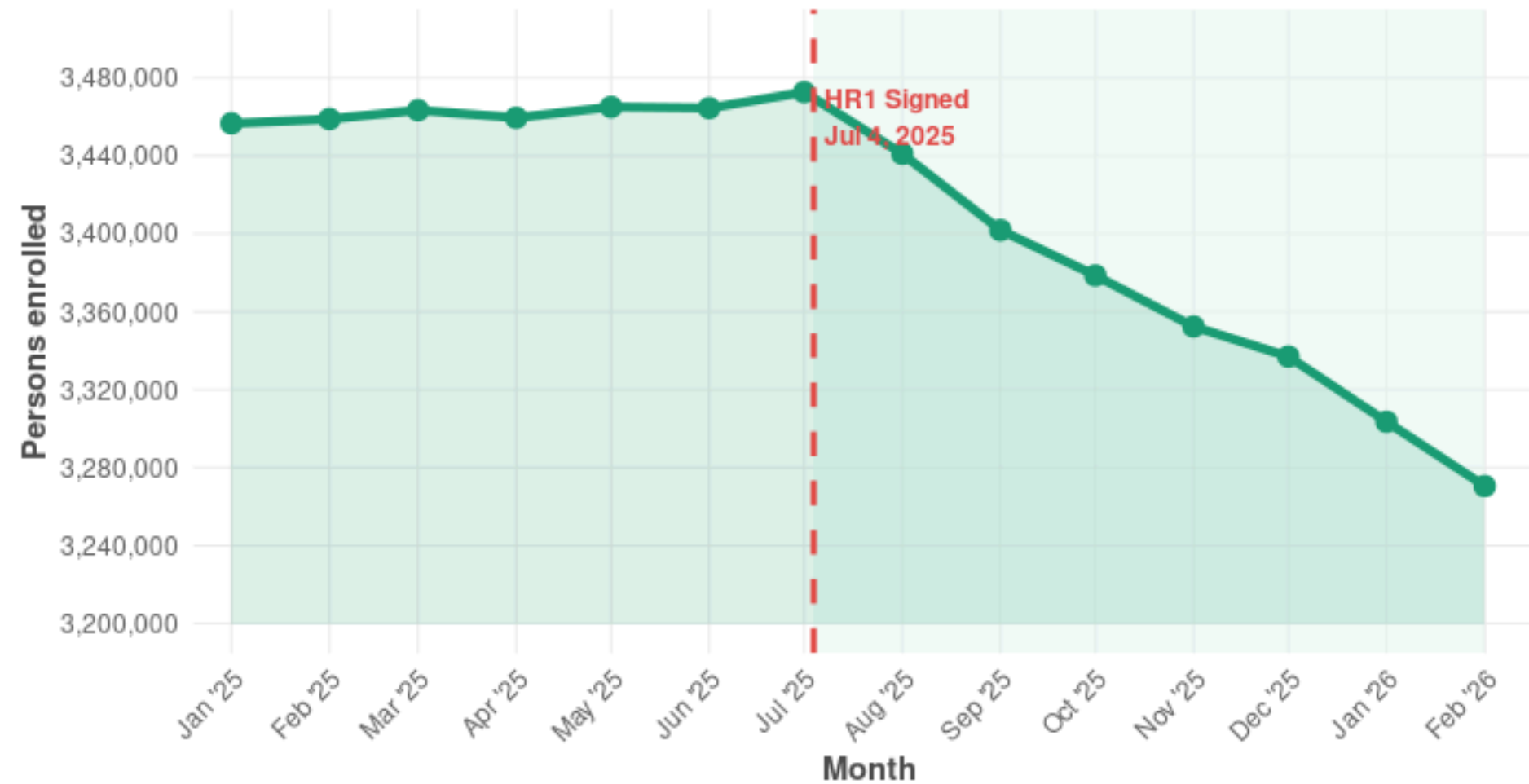
- **Department of Health Services**
500K patients/year across 5 hospitals + 24 ambulatory clinics
- **Department of Mental Health**
Largest county mental health dept. in the nation
- **Department of Public Health**
39 programs; 10M residents served across multiple public health centers
- **Department of Public Social Services**
Largest County administrator in the State of California of safety net programs including Medi-Cal, CalFresh, CalWORKs, IHSS,



Countywide Impact

LA County Medi-Cal enrollment

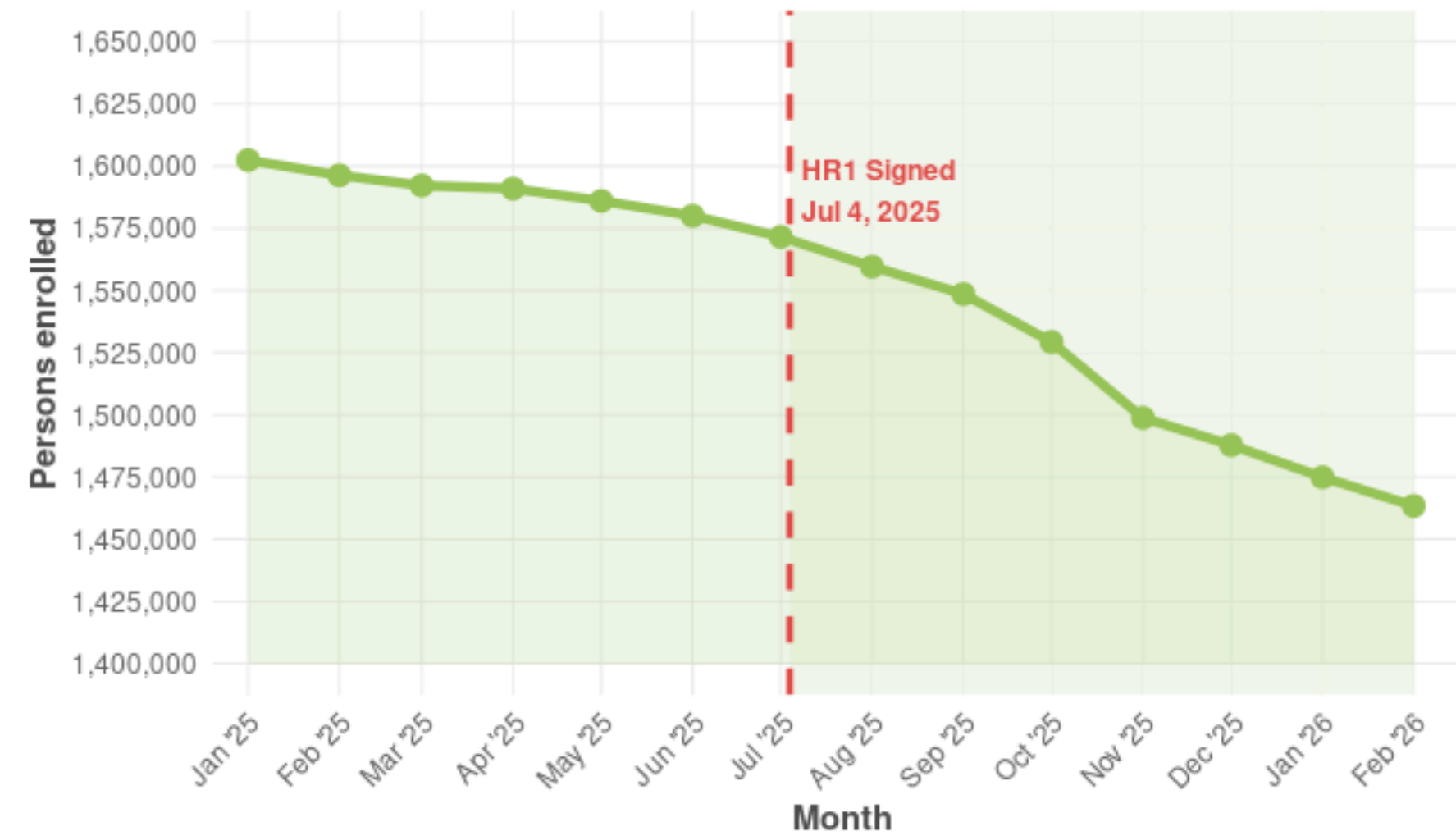
January 2025 – February 2026 | Shaded area = post-HR1 period



Post-HR1 loss (Jul 2025–Feb 2026): 202,137 persons (5.8%)
Source: County of Los Angeles, DPSS Statistical Reports

LA County CalFresh enrollment

January 2025 – February 2026 | Shaded area = post-HR1 period



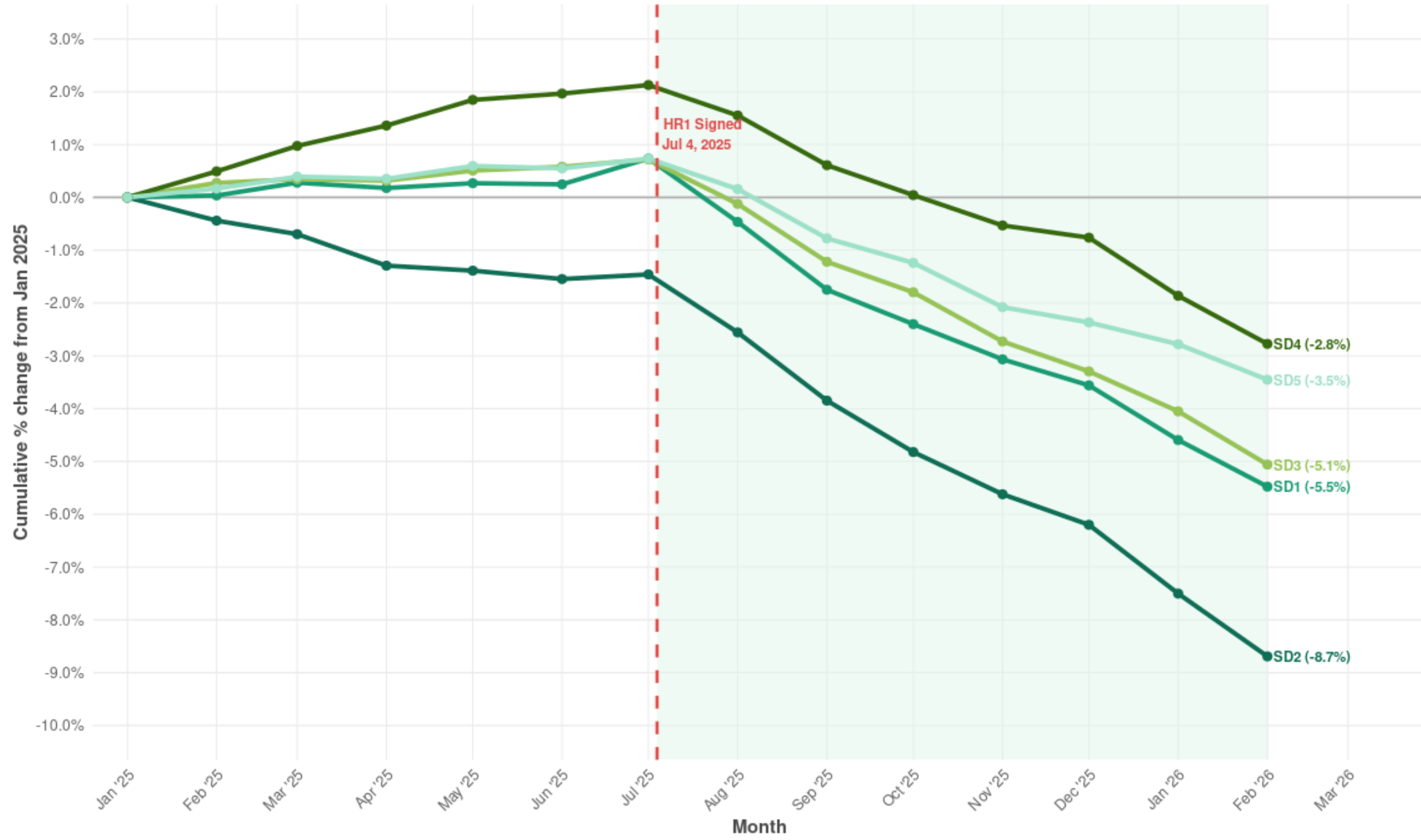
Post-HR1 loss (Jul 2025–Feb 2026): 108,155 persons (6.9%)
Source: County of Los Angeles, DPSS Statistical Reports

In the face of threatened service reductions, lay-offs, and closures, it is critical that the Board and public have timely and reliable access to information regarding impacts to the County's health and social services safety net.



Medi-Cal enrollment change by supervisorial district

Indexed to January 2025 (0% baseline) | Shaded area = post-HR1 period



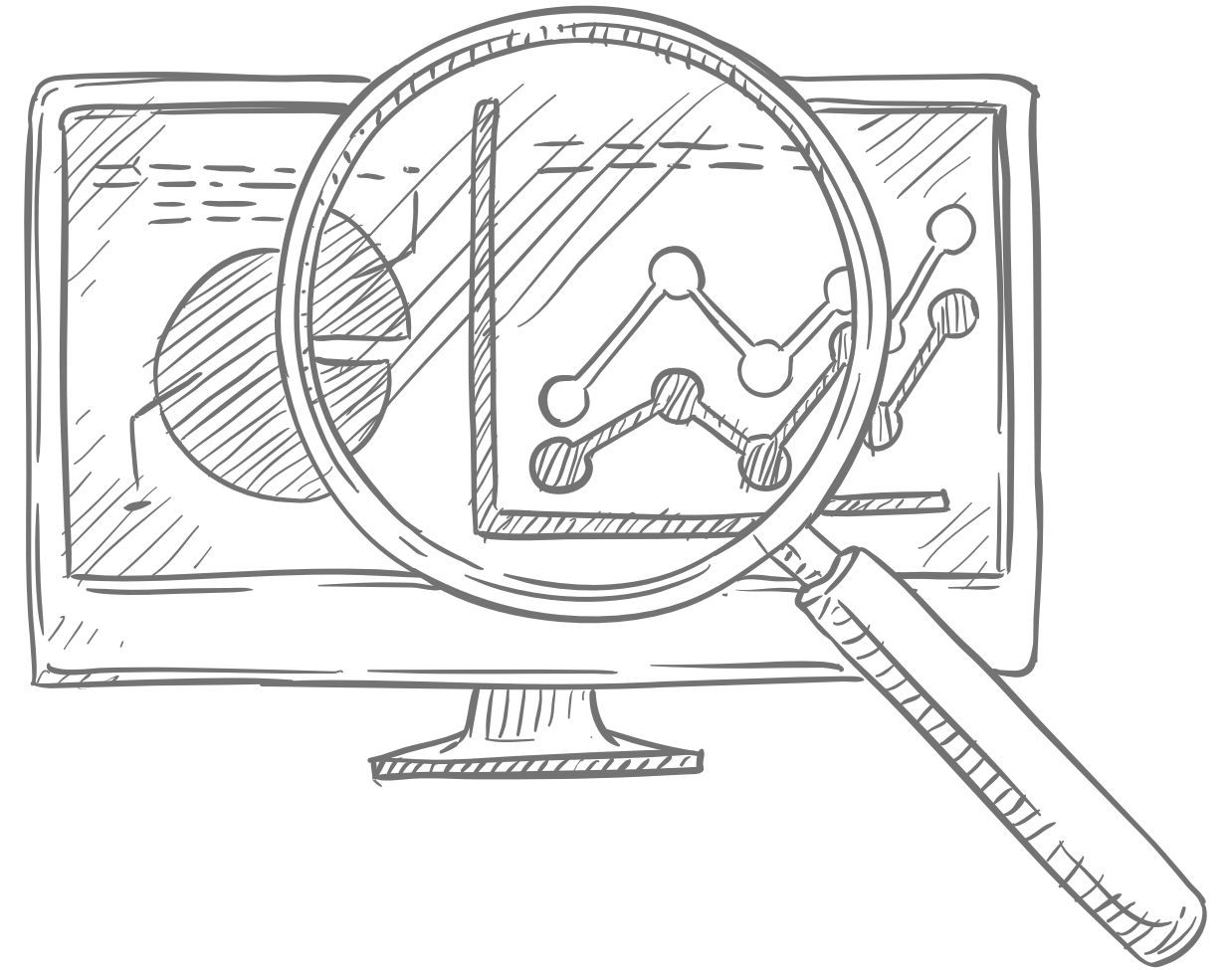
District Impact

Early indicators show uneven losses across communities. County Departments should be tracking who is experiencing the largest disruptions in access to care and loss of safety net.

Feb 2026 cumulative loss from Jan 2025 baseline:
SD2: -8.7% | SD1: -5.5% | SD3: -5.1% | SD5: -3.5% | SD4: -2.8%
Source: County of Los Angeles, DPSS Statistical Reports

Directives

Transparent, public data is essential to target interventions and protect equitable access.



01

DHS

Directs DHS to publish monthly data on visit volumes, wait times, and care quality metrics broken down by specialty and visit type.

02

DPH

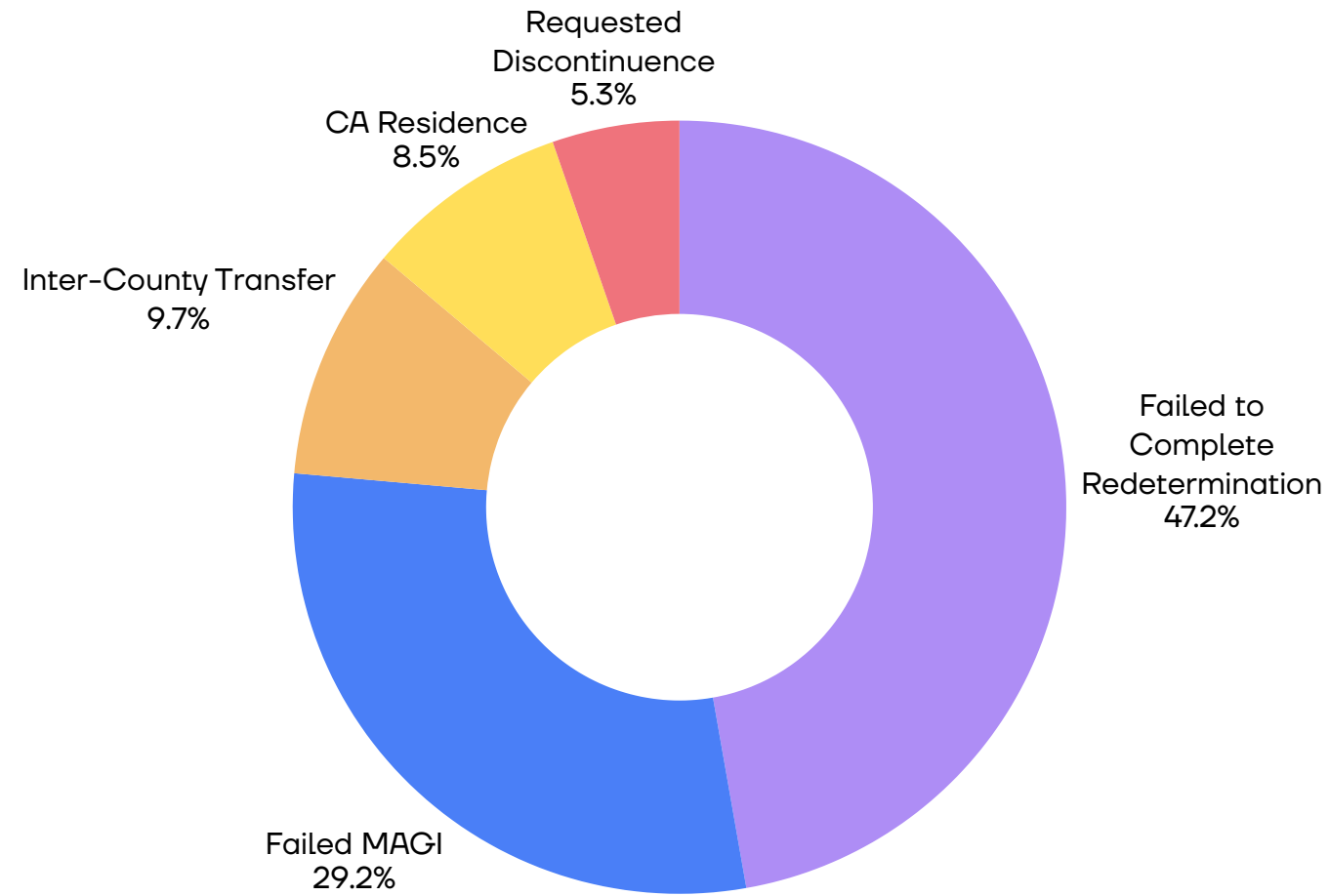
Directs DPH to publish monthly clinic workload volumes, patient cycle times, and wait times by service type and clinic site.

03

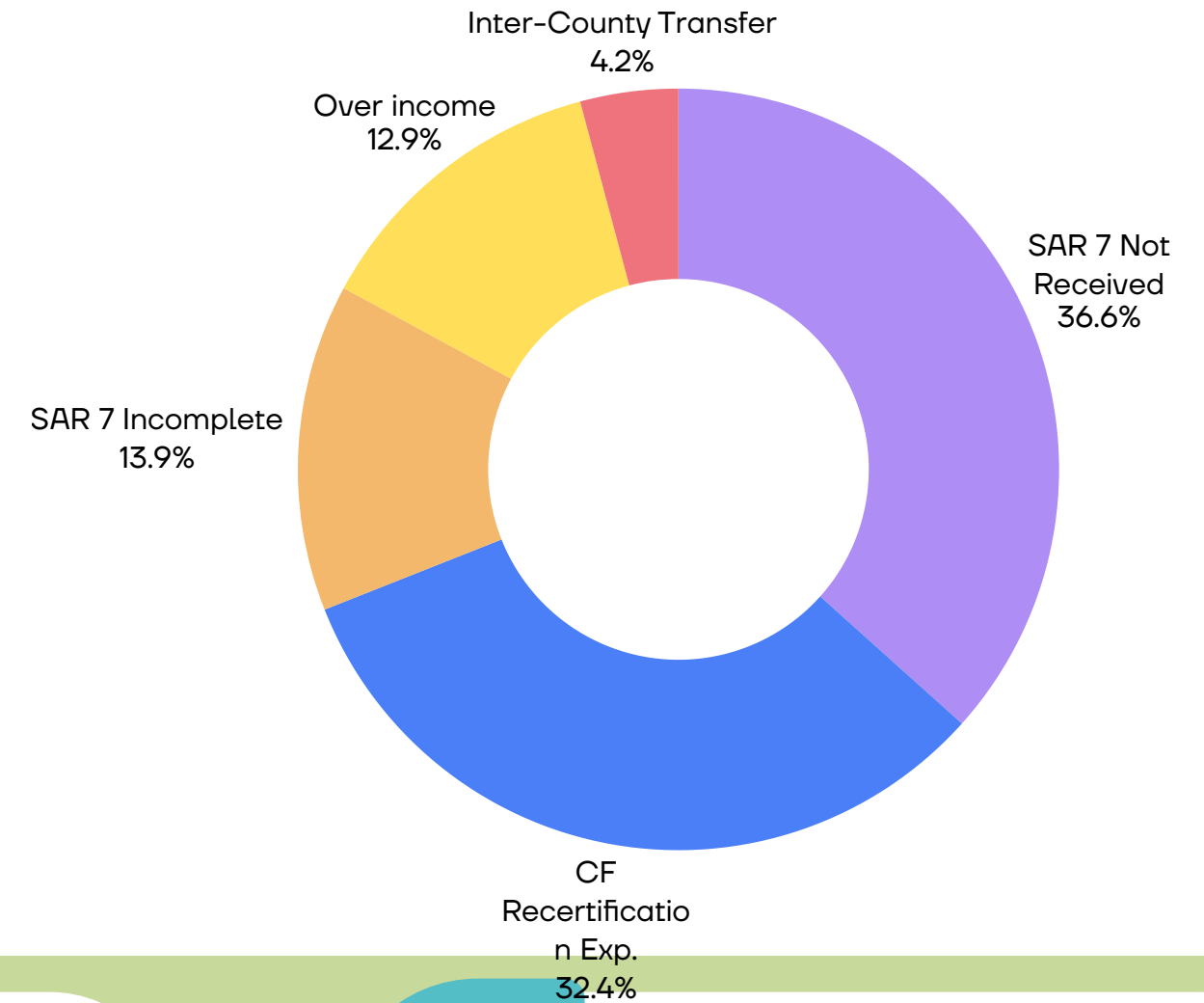
DMH

Directs DMH to publish monthly data on client volumes, wait times for assessments and follow-up appointments across all directly-operated programs.

Medi-Cal — Top 5 Termination Reasons (Jan–Sep 2025)



CalFresh — Top 5 Termination Reasons (Jan–Sep 2025)



04 DPSS

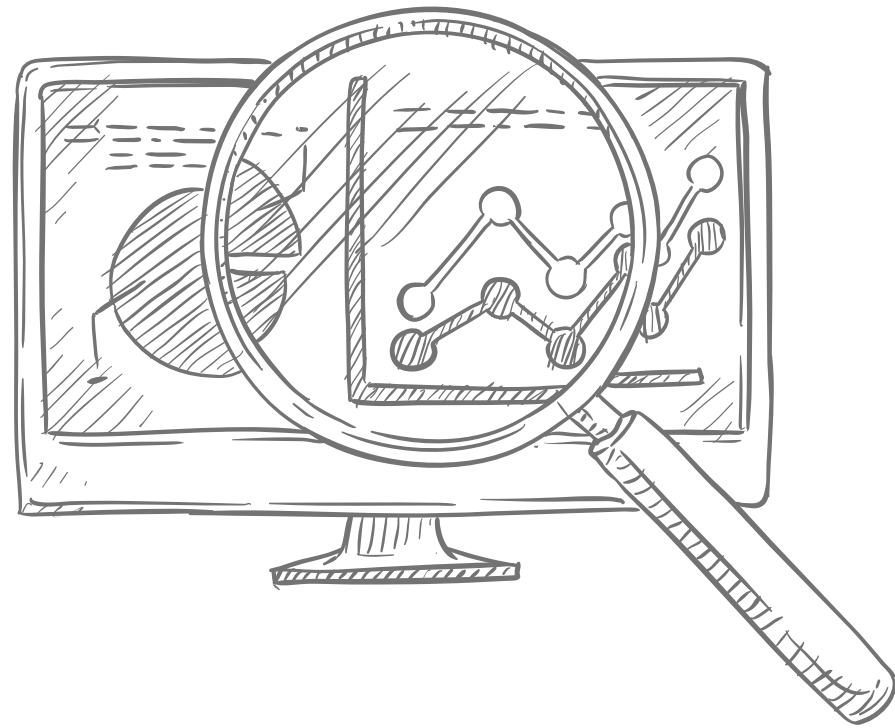
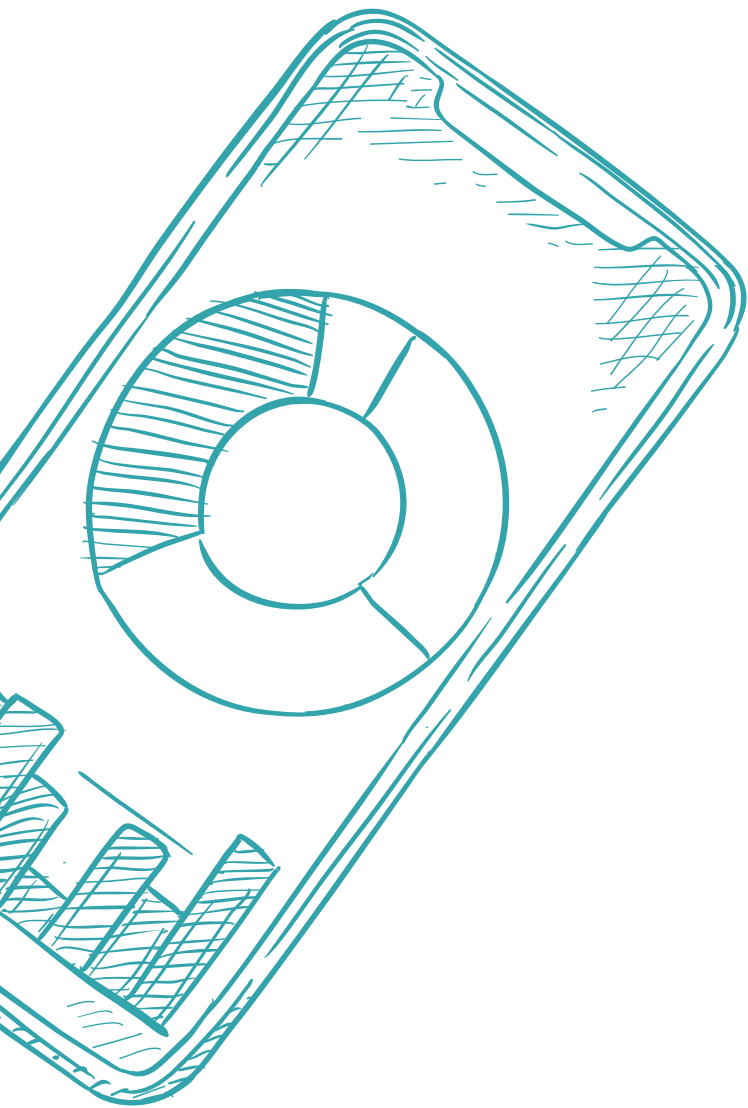
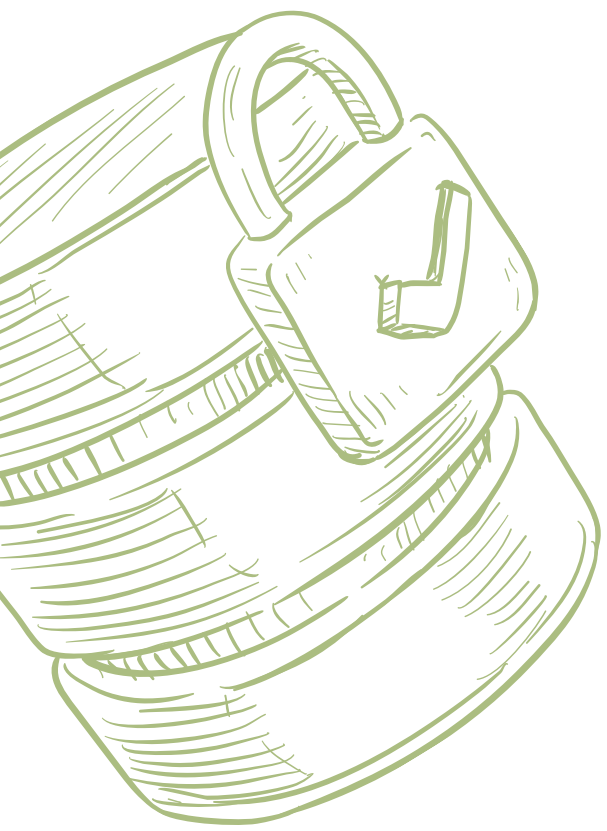
Directs DPSS to expand its existing public dashboard to include application processing times, caseload trends, enrollment and disenrollment data, program reach rates, and denial rates.

05 Historical Baseline

Dashboards must include historical data beginning no later than January 1, 2025.

06 Unified Portal

Directs the CEO's Chief Data Officer to report within 90 days on the feasibility of consolidating all four dashboards into a single public-facing portal through the County's Information Hub.

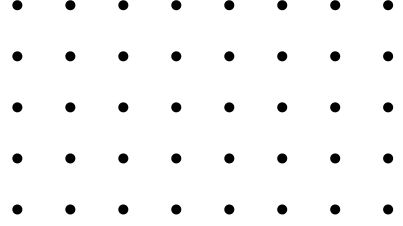


Creating Public-Facing Safety Net Dashboards


Tracking the Impact of H.R. 1 and Other Health Policy Changes

April 1, 2026








DHS
\$750M/yr
 Projected revenue loss



DMH
 Medi-Cal expenditures will increase due to H.R. 1 impacts



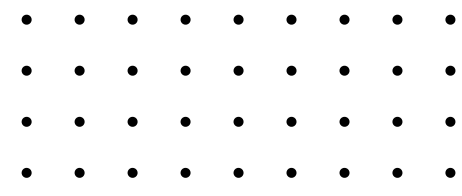
DPH
\$200 - 300M
 Reduction in federal and state funding



DPSS
 Counties are responsible for front-line implementation of H.R. 1. Lower federal share for administrative costs.

Los Angeles County's Safety Net

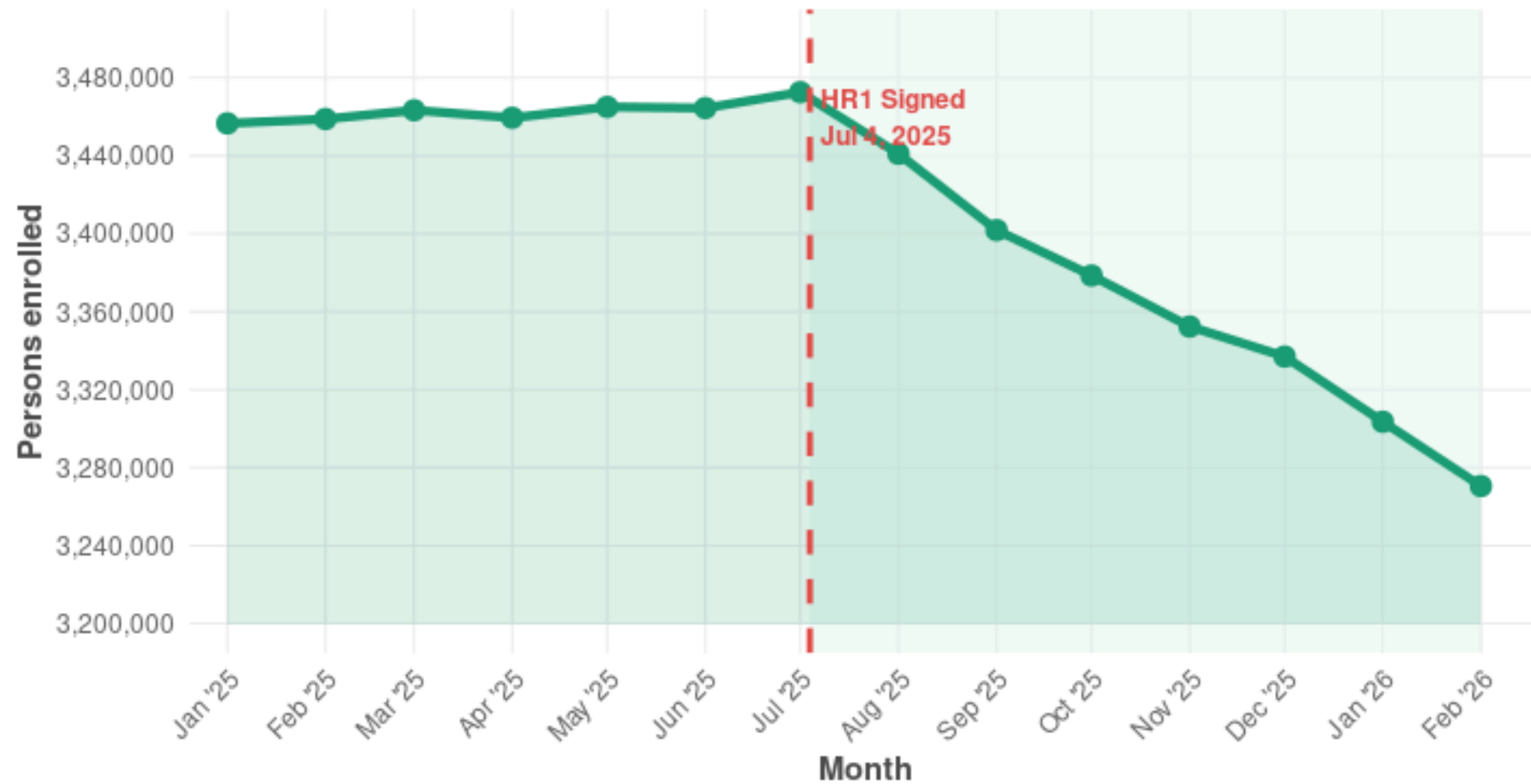
- **Department of Health Services**
 500K patients/year across 5 hospitals + 24 ambulatory clinics
- **Department of Mental Health**
 Largest county mental health dept. in the nation
- **Department of Public Health**
 39 programs; 10M residents served across multiple public health centers
- **Department of Public Social Services**
 Largest County administrator in the State of California of safety net programs including Medi-Cal, CalFresh, CalWORKs, IHSS,



Countywide Impact

LA County Medi-Cal enrollment

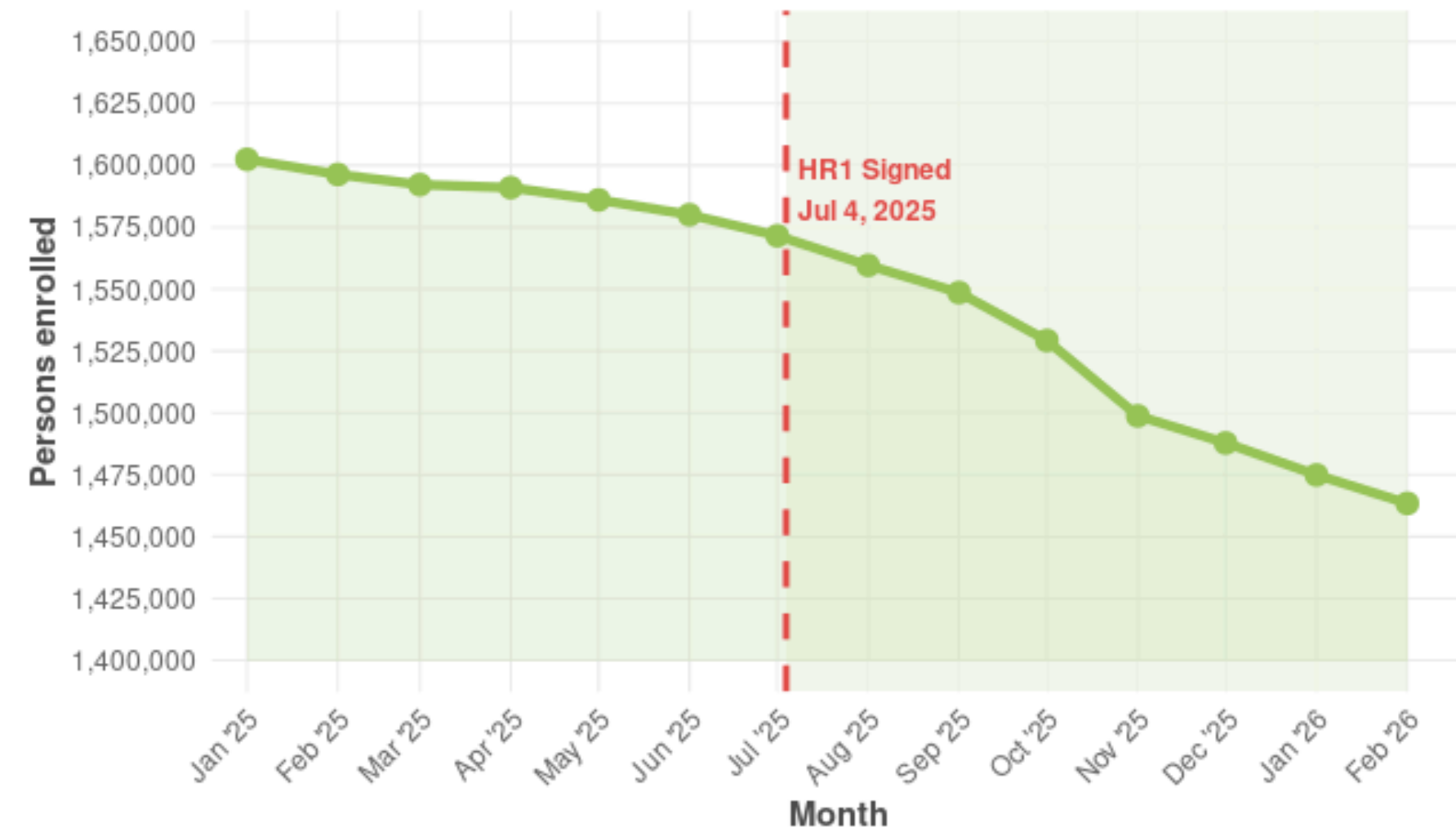
January 2025 – February 2026 | Shaded area = post-HR1 period



Post-HR1 loss (Jul 2025–Feb 2026): 202,137 persons (5.8%)
 Source: County of Los Angeles, DPSS Statistical Reports

LA County CalFresh enrollment

January 2025 – February 2026 | Shaded area = post-HR1 period



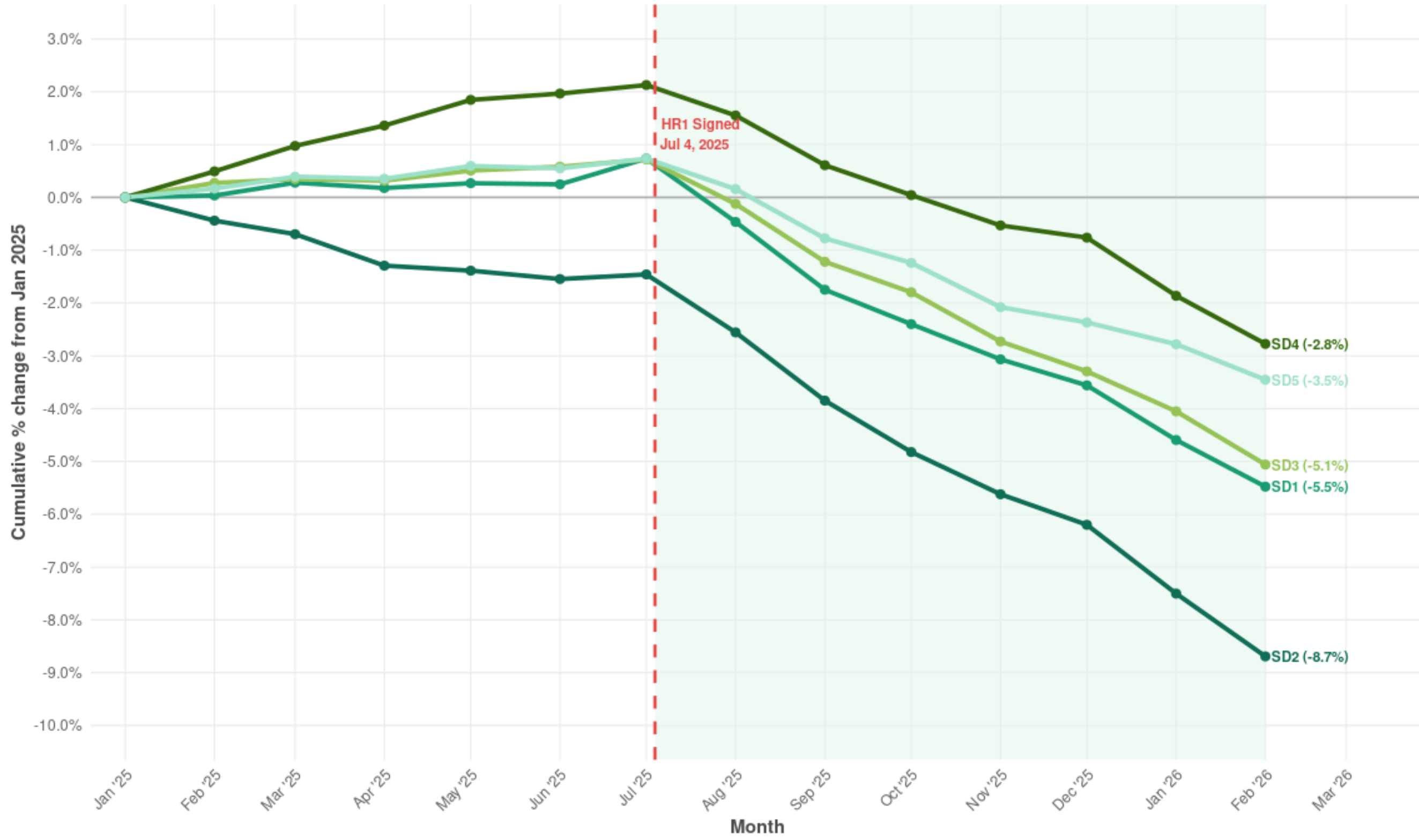
Post-HR1 loss (Jul 2025–Feb 2026): 108,155 persons (6.9%)
 Source: County of Los Angeles, DPSS Statistical Reports

In the face of threatened service reductions, lay-offs, and closures, it is critical that the Board and public have timely and reliable access to information regarding impacts to the County's health and social services safety net.



Medi-Cal enrollment change by supervisorial district

Indexed to January 2025 (0% baseline) | Shaded area = post-HR1 period



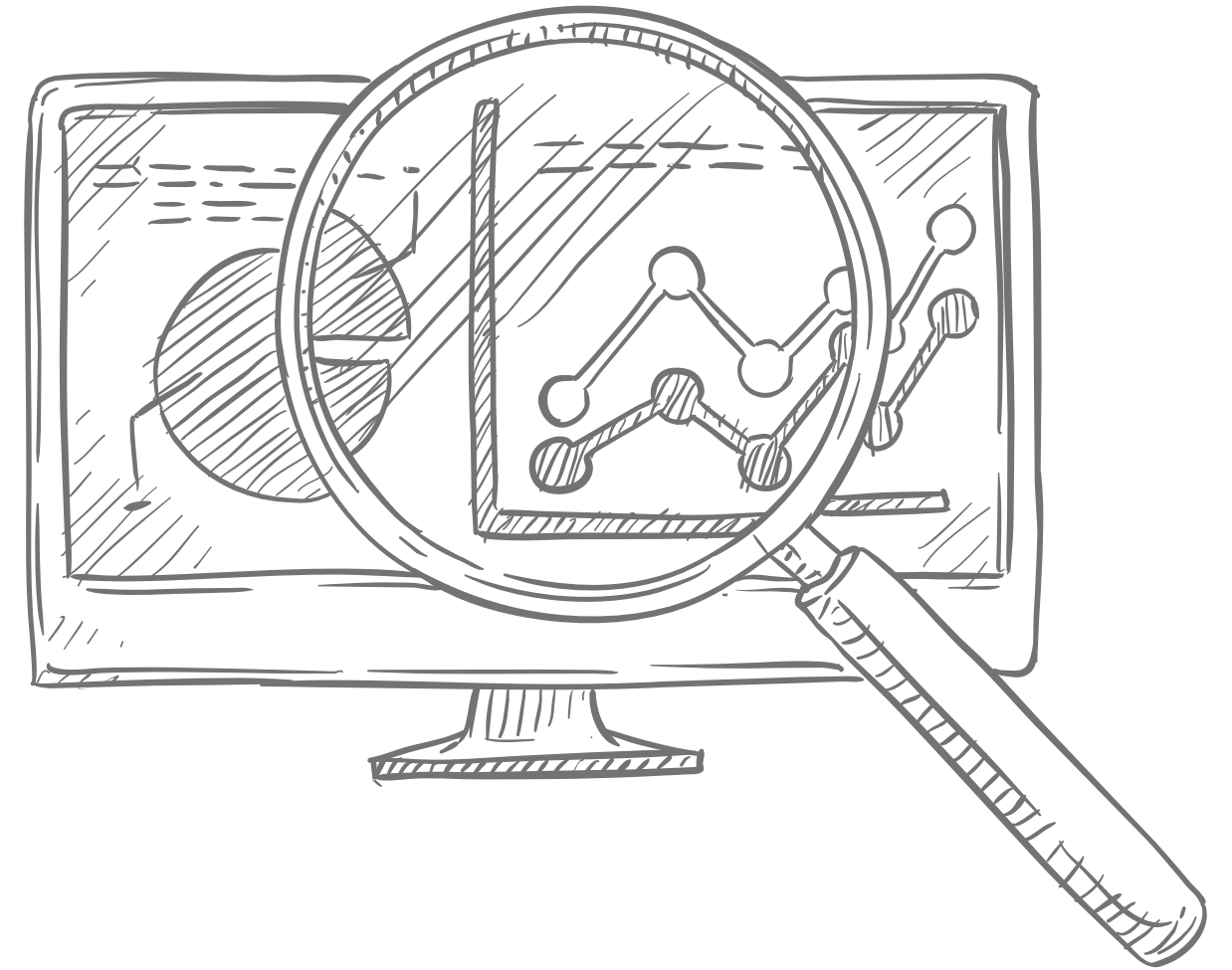
District Impact

Early indicators show uneven losses across communities. County Departments should be tracking who is experiencing the largest disruptions in access to care and loss of safety net.

Feb 2026 cumulative loss from Jan 2025 baseline:
SD2: -8.7% | SD1: -5.5% | SD3: -5.1% | SD5: -3.5% | SD4: -2.8%
Source: County of Los Angeles, DPSS Statistical Reports

Directives

Transparent, public data is essential to target interventions and protect equitable access.



01 DHS

Directs DHS to publish monthly data on visit volumes, wait times, and care quality metrics broken down by specialty and visit type.

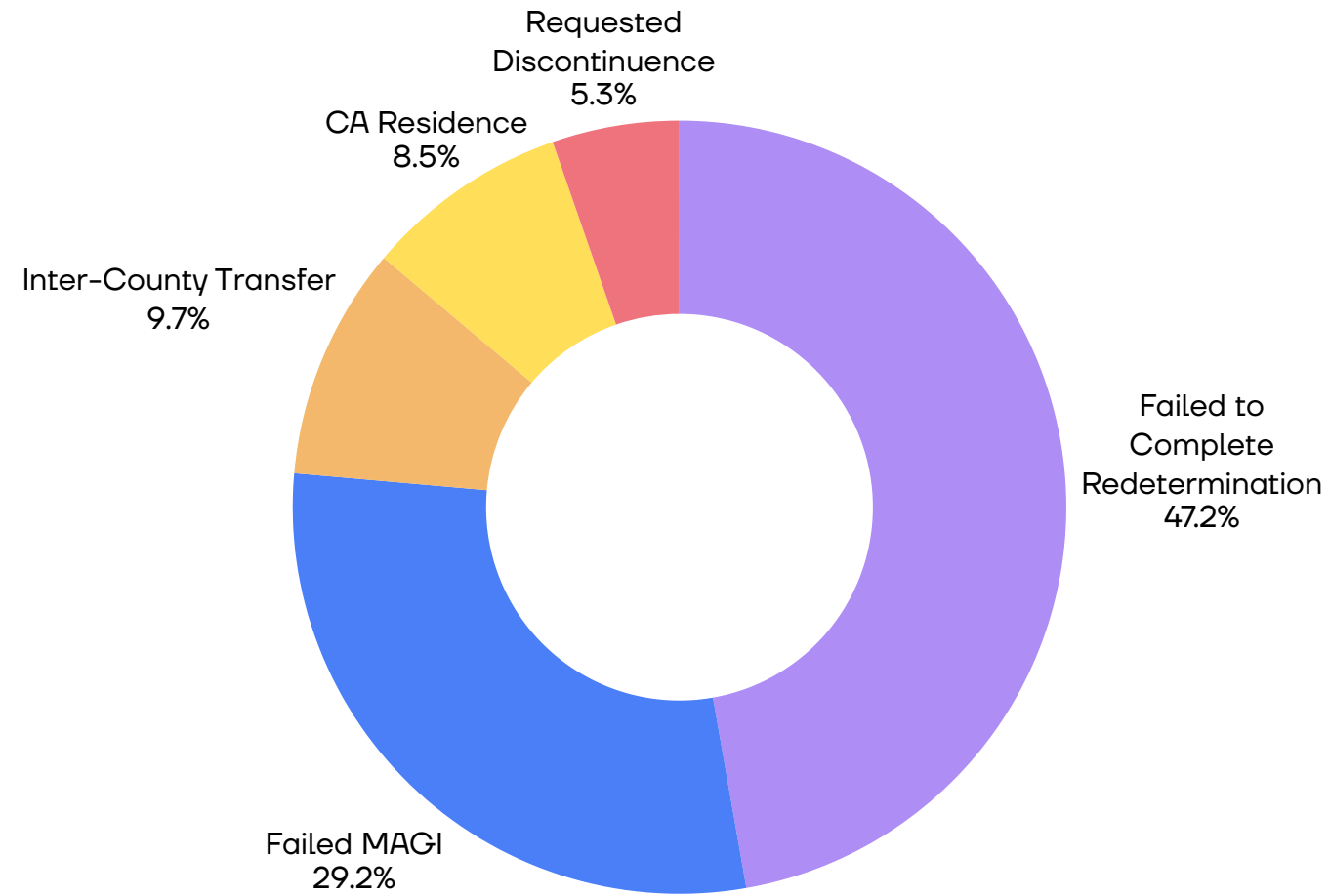
02 DPH

Directs DPH to publish monthly clinic workload volumes, patient cycle times, and wait times by service type and clinic site.

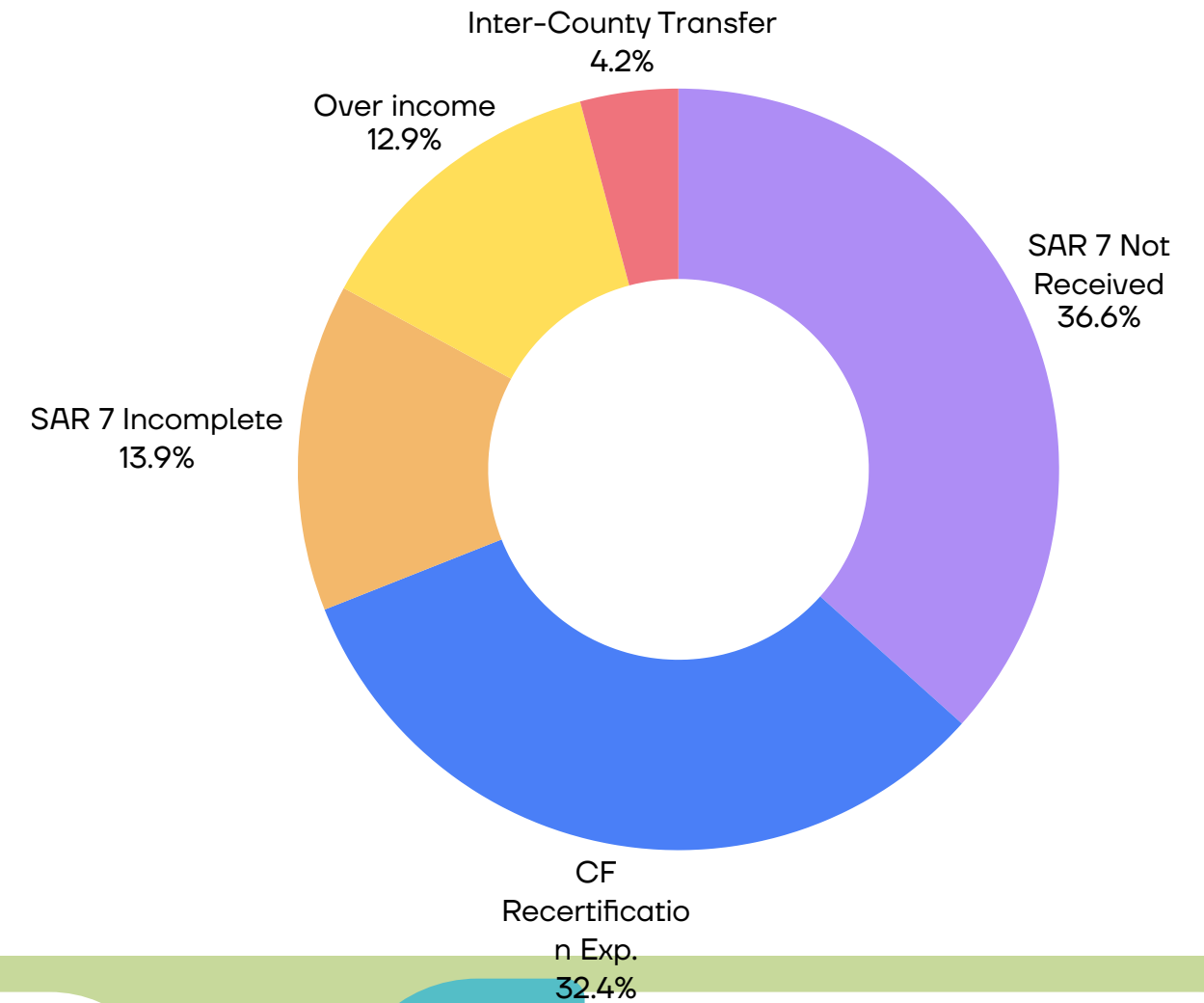
03 DMH

Directs DMH to publish monthly data on client volumes, wait times for assessments and follow-up appointments across all directly-operated programs.

Medi-Cal — Top 5 Termination Reasons (Jan–Sep 2025)



CalFresh — Top 5 Termination Reasons (Jan–Sep 2025)



04 DPSS

Directs DPSS to expand its existing public dashboard to include application processing times, caseload trends, enrollment and disenrollment data, program reach rates, and denial rates.

05 Historical Baseline

Dashboards must include historical data beginning no later than January 1, 2025.

06 Unified Portal

Directs the CEO's Chief Data Officer to report within 90 days on the feasibility of consolidating all four dashboards into a single public-facing portal through the County's Information Hub.