



Board of Supervisors Family & Social Services Cluster Agenda Review Meeting

DATE: February 25, 2026

TIME: 1:30 PM

MEETING CHAIRS: Anthony Cespedes, 1st Supervisorial District

CEO MEETING FACILITATOR: Claudia Alarcon

THIS MEETING IS HELD UNDER THE GUIDELINES OF BOARD POLICY 3.055.

To participate in the meeting in-person, the meeting location is:

Kenneth Hahn Hall of Administration
500 West Temple Street
Los Angeles, California 90012
Room 140

To participate in the meeting virtually, please call teleconference number
1 (323) 776-6996 and enter the following 995 916 944# or

[Click here to join the meeting](#)

For Spanish Interpretation, the Public should send emails within 48 hours in advance of the meeting to: ClusterAccommodationRequest@bos.lacounty.gov

Members of the Public may address the Family & Social Services Cluster on any agenda item during General Public Comment.

The meeting chair will determine the amount of time allowed for each item.

THIS TELECONFERENCE WILL BE MUTED FOR ALL CALLERS. PLEASE DIAL *6 TO UNMUTE YOUR PHONE WHEN IT IS YOUR TIME TO SPEAK.

- I. **Call to Order**
- II. **Consent Item(s)** (Any Information Item is subject to discussion and/or presentation at the request of two or more Board offices):
-- No items --
- III. **Presentation//Discussion Items:**
 - a) **Aging & Disabilities Department (AD):** Disabilities Services Strategic Plan Report Back.
 - b) **AD:** Elderly Nutrition Program Update.
 - c) **AD:** New Freedom Transportation Program Update.
- IV. **Presentation//Discussion Items:**
-- No items --
- V. **Public Comment**
- VI. Standing item(s) and those continued from a previous meeting of the Board of Supervisors or from a previous FSS Agenda Review meeting.
-- No items --

VII. Adjournment

IF YOU WOULD LIKE TO EMAIL A COMMENT ON AN ITEM ON THE FAMILY & SOCIAL SERVICES CLUSTER AGENDA, PLEASE USE THE FOLLOWING EMAIL ADDRESS AND INCLUDE THE AGENDA NUMBER YOU ARE COMMENTING ON:

Family_Social_Services@ceo.lacounty.gov

LA County Aging & Disabilities Department Disability Services Strategic Plan

February 2026



Solutions that Matter

Agenda

Strategic Planning
Process

Strategic Plan



Strategic Planning Process

Strategic Planning Process



Environmental Landscape and Literature Review



Policy and Regulatory Review



Service Mapping and Benchmarking



Stakeholder Engagement

- Survey
- Focus Groups
- Key Informant Interviews
- SWOT Analysis Workshop



Needs Assessment Report



Visioning Session



Needs Assessment Recommendations

Form a Disability Services Hub: AD as the convener and coordinator for the network . Enhance collaboration and improve the network for individuals with disabilities.

Increase Coordination Across Lifespan: Work with all key departments and programs to connect, coordinate, and (where possible) expand supports across the lifespan. Facilitate connections between programs to increase coordination and connectivity across programs.

Expand Availability of Key Services: Increase availability of services through three primary strategies: coordination of existing services, advocating for additional support and funding, and increased accessibility of the existing services within the network.

Enhance Capacity and Infrastructure: Assess the capacity and infrastructure of AD and the network. Build the connectivity, right-size staff across agencies to support the strategies and bolster external workforce development to enhance the network of providers of services.



Aging & Disabilities Department Disability Services Strategic Plan

Disability Services Vision, Mission, & Commitment

Vision

Our vision is to help **people with all disabilities of all ages**

- Live with dignity and independence

Mission

Our mission is to

- Improve lives and **champion inclusion and accessibility** for **people of all ages** with **all** disabilities, and their communities.

Commitment

- Help **people with all disabilities of all ages to live fully and freely** and age in place, with dignity and independence.
- Promote the safety and well-being of **people with disabilities of all ages** in their communities.
- Create vibrant community centers that empower and connect residents.

Disability Services Values

Values

Equity	We commit to advancing equity to serve all people of all ages with disabilities in Los Angeles County. We lead explicitly, but not exclusively, through advocacy, transparency, and accountability.
Inclusion	We exemplify and foster inclusion in all aspects by championing and modeling accessibility, visibility, diversity, and collaboration
Empathy	We integrate empathy into all we do, ensuring compassion, understanding, and responsiveness are shown in daily actions and interactions.

Strategic Plan Action Areas



Action Area 1: Strengthen Capacity and Infrastructure

Goal 1.1: Establish AD as the County-wide Hub for disability services across the County

Goal 1.2: Right-size the capacity of the network to support system improvements

Timeline: Year One Through Three

Key Partners:

Board of Supervisors
County Departments,
Commission on Disabilities, Commission for Older Adults,
Aging and Disability Resource Connection,
Independent Living Centers,
Los Angeles County Community and Senior Centers.



Action Area 2: Increase Accessibility and Inclusion

Goal 2.1: Improve accessibility of the existing County infrastructure

Goal 2.2: Improve the County standard for accessibility beyond Americans with Disabilities Act (ADA) compliance

Goal 2.3: Improve accessibility in communities and neighborhoods

Timeline: Years Two through Four

Key Partners:

Board of Supervisors

County Departments

Los Angeles County Development Authority

METRO

Commission on Disabilities

Commission for Older Adults

State of California Department of
Developmental Services

State of California Department of Rehabilitation



Action Area 3: Expand Advocacy and Education

Goal 3.1: Establish AD as the active and visible leader in advocating for all individuals with disabilities in Los Angeles County

Goal 3.2: Serve as a model for County Departments through AD's internal staff education, training, and workforce

Goal 3.3: Establish AD as the leading resource for information, guidance, and education on best practices and regulations for serving and including people with disabilities

Timeline: Years One Through Three

Key Partners:

Commission on Disabilities
Commission for Older Adults
Independent Living Centers
State and Federal Disability Services Agencies
County Departments
AD Human Resources
Providers and Advocacy Organizations
Vocational Schools



Action Area 4: Enhance Services and Supports

Goal 4.1: Increase the availability and accessibility of disability related services and supports across Los Angeles County

Goal 4.2: Increase information about and awareness of services for individuals with disabilities

Timeline: Years One Through Three

Key Partners:

County Departments

Commission on Disabilities

Commission for Older Adults

FIFA / Olympics / Paralympics Planning Committees

Providers and Advocacy Organizations

Vocational Rehabilitation Providers



Strategic Plan Implementation and Priorities

Implementation

- Implementation Plan outlining key activities for “how” to reach goals
- AD will seek and incorporate regular feedback, plan will be adjusted based on real time needs and stakeholder input
- Teams will be formed to work towards goals and shift approach as needed

Priorities

- Internal policies and practices as the top priority
- Offers early opportunities for success
- Based on feedback from stakeholders

THANK YOU!

Contact Us

Victoria Jump

Acting Chief Deputy

vjump@ad.lacounty.gov

(213) 856-1219

Ellen Burton

Project Manager

eburton@pcgus.com

(509) 254-2621





LOS ANGELES COUNTY

**Aging & Disabilities
Department**

Family & Social Services Cluster Meeting

February 25,
2026

| Elderly Nutrition Program

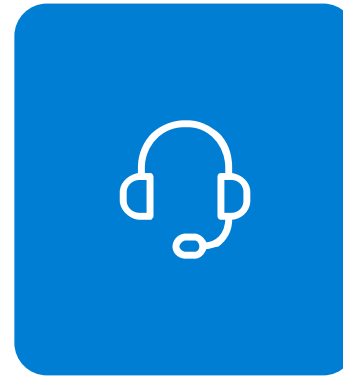


Elderly Nutrition Program

How to Apply
Phone: (800) 510-2020

Eligibility Congregate Meals

- Adults 60 years of age or older
- The spouses of older adult program participants, regardless of age
- Individuals with a disability who either live at a Congregate Meals Program site or live with and accompany an older adult participating in the program



Eligibility Home-Delivered Meals

- Adults aged 60 or older who are frail, homebound due to illness or disability, or otherwise isolated
- The spouse of an older adult participating in the program
- Individuals with a disability who live with an older adult participating in the program.

Congregate Meals

- Congregate meals are served at senior centers and other accessible locations for older adults.
- Prepared to meet the United States Department of Agriculture (USDA) dietary guidelines.
- Ethnic meal options are available at some sites.



Home-Delivered Meals

- Homebound adults receive five to seven nutritionally balanced hot or frozen meals delivered to their homes.
- Storing and heating instructions are provided with each meal.

Program Operations In Los Angeles County

- ✓ Contracts with 7 community-based providers and 9 city-providers across Supervisorial Districts excluding the City of Los Angeles.
- ✓ Providers partner with catering companies to produce meals daily; some operate central kitchens
- ✓ Congregate meals served at 95 senior centers and community sites
- ✓ Over 160 Home-Delivered Meal (HDM) routes operating countywide
- ✓ Addresses food insecurity and supports health, safety, and independence among older adults

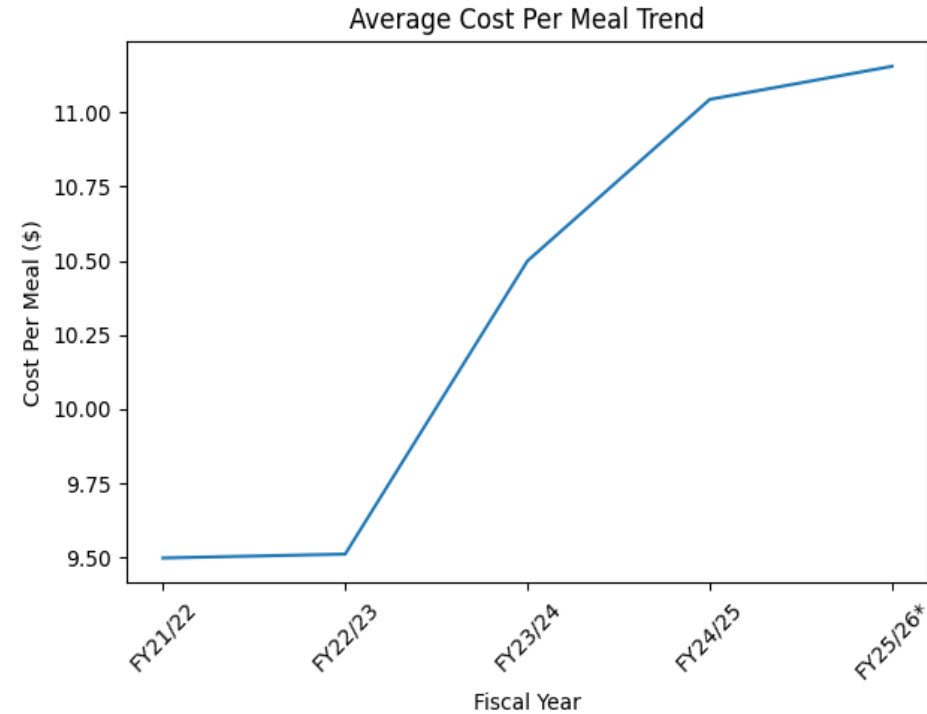


Program Costs and Meals



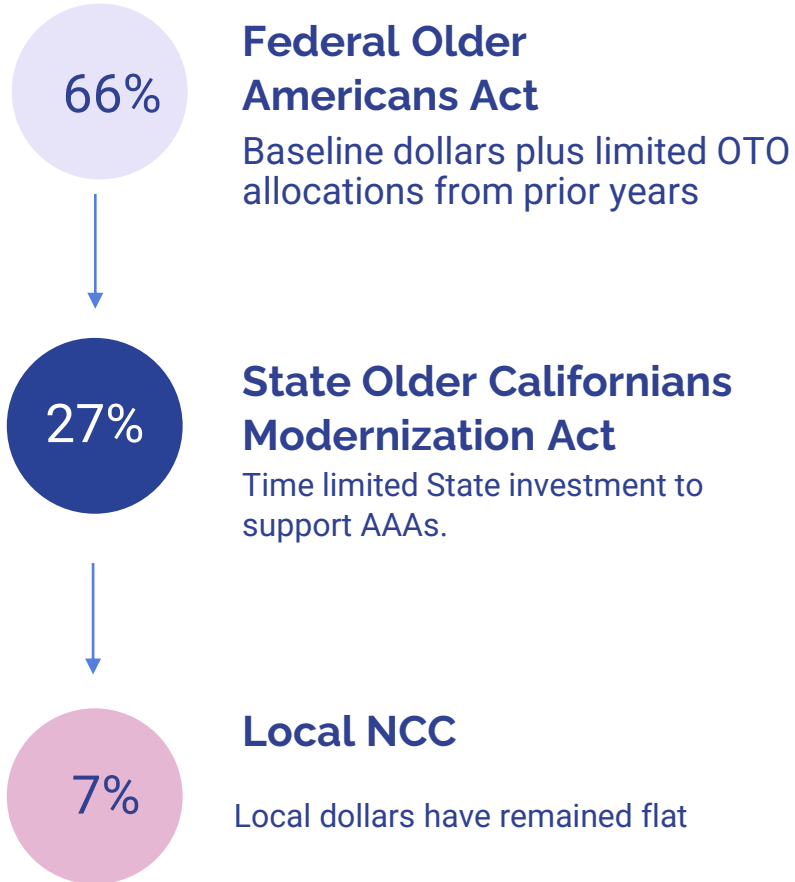
Elderly Nutrition Program Summary		
Fiscal Year	Meals Provided	Costs
FY 21/22	6,528,056	\$ 62,008,044
FY 22/23	4,243,693	\$ 40,365,010
FY 23/24	3,483,827	\$ 36,578,725
FY 24/25	3,175,178	\$ 35,065,918
FY 25/26	1,643,208	\$ 18,330,443

*Up to December 31, 2025

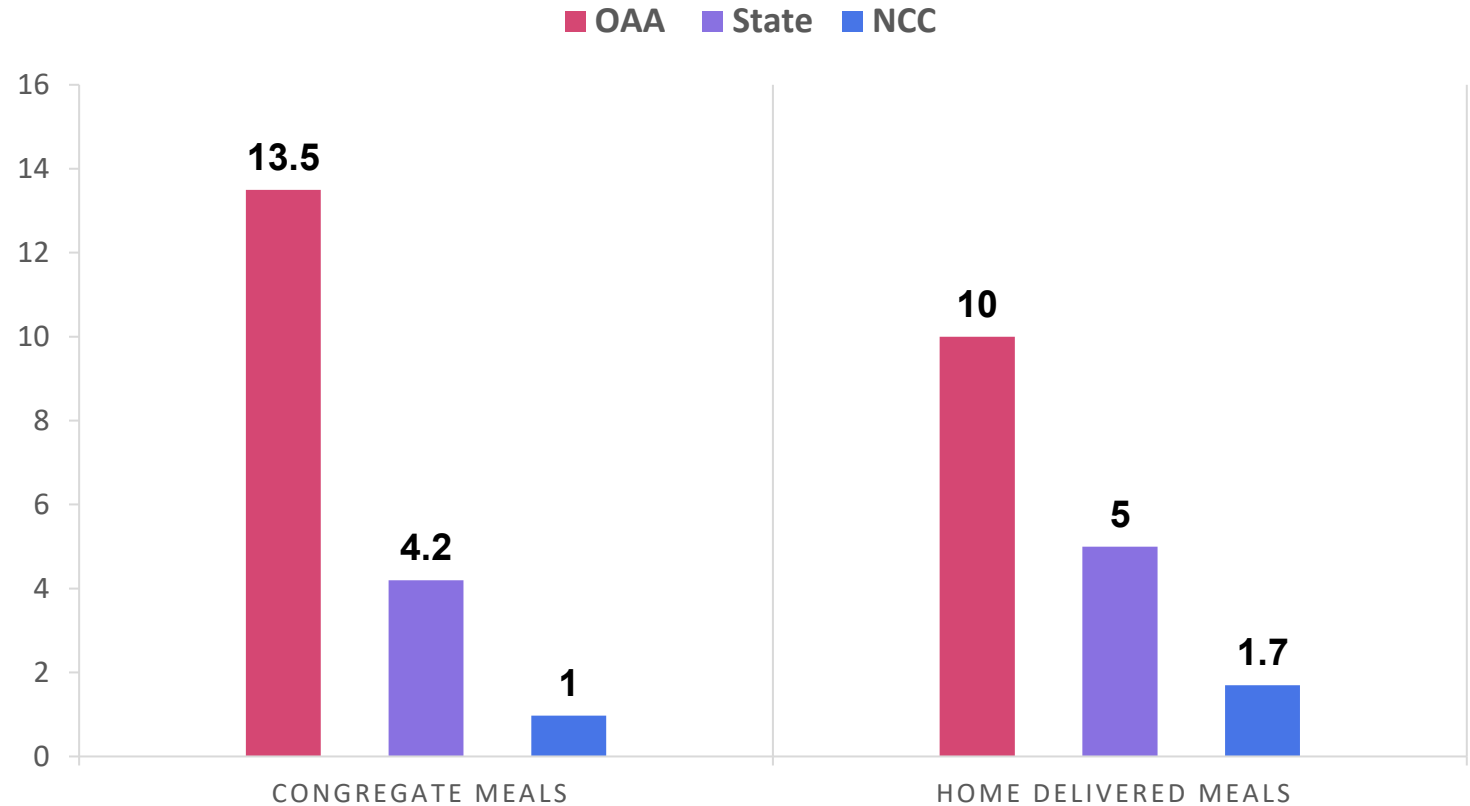


- One-time funding has expired, however, the on-going increase in the adult population results in need for more meals to be provided through the Elderly Nutrition Program.
- While total expenditures have decreased, the average cost per meal has increased due to higher food, labor, and operational costs combined with reduced service volume.

Funding Overview FY 2025-2026



ENP FUNDING SOURCES (In Millions)



Approximately \$35.4 Million for Elderly Nutrition Program

Current Status: Waitlists by Supervisorial District



High demand across all regions of the County

Many sites operating with waitlists due to funding constraints including congregate meals

Increased food and operational costs impacting providers

Currently, over 1,000 clients on a waitlist for meals.

Sustainability & Looking Ahead

Over 30,000 older adults served annually; more than 1,000 eligible individuals currently waitlisted

Eliminating the current waitlist alone would require approximately \$3.03M annually

Federal OAA baseline funding remains largely flat while demand continues to grow

Cost per meal has increased from approximately \$9.50 to over \$11.00 due to food and labor inflation



Sustainability & Looking Ahead



The Department has submitted a \$9.8M County budget request to maintain service levels and reduce waitlists

AAAs statewide, in coordination with Meals on Wheels California, are advocating for a \$52 million Older Californians Act modernization investment, with approximately half proposed for nutrition service

Long-term sustainability will require a strategic and sustained funding approach at both the County and State levels



LOS ANGELES COUNTY

**Aging & Disabilities
Department**

THANK YOU

Questions?



LOS ANGELES COUNTY

**Aging & Disabilities
Department**

New Freedom Transportation



New Freedom Transportation Programs



The New Freedom Transportation (NFT) Program provides free, on-demand transportation for older adults and adults with disabilities through two service models funded through Metro FTA 5310 funds.



Taxicab Services Program (TSP)

- On-demand taxicab transportation for essential activities. Up to four one-way trips per month
- Provides countywide mobility access for eligible participants



Volunteer Mileage Driver Reimbursement Program (VDMR)

- Reimburses mileage for volunteer drivers designated by participants
- Expands transportation access through trusted caregiver and support networks



Eligibility

- Adults 65+
- Adults 18-64 with a disability

Metro FTA 5310 Grant 2024-2026



Award Overview:

- \$1.2 Million (3-year grant)
- For both NFT service programs

New NFT Enrollments By Supervisorial District



Supervisorial District	New Enrollments FY 2024-25	New Enrollments FY 2025-26 (to date)
District 1	250	133
District 2	275	200
District 3	256	154
District 4	174	121
District 5	240	134
Total New Enrollments	1,195	742

Program Update

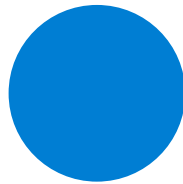


Demand significantly exceeded available grant funding, requiring a temporary pause while new funds were secured.

RELAUNCH planned under new Metro 5310 award funding FY 26-27 through FY 27-28

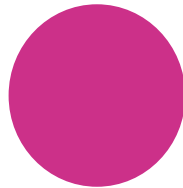
- All participants transitioned to a centralized waitlist
- Waitlist open to new eligible applicants
- Phased enrollment aligned with available funding capacity
- Prioritization framework will guide re-enrollment

Metro FTA 5310 Grant FY 2026-28



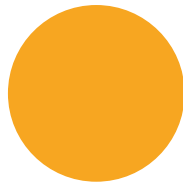
Award Overview:

- \$800,000 total (2-year grant)
- \$400,000 annually
- Must Support both NFT service



Estimated Annual Cost at Current Service Levels

- \$1.25M- \$1.3M (services)
- \$300k estimated (staffing)



Funding Implication:

- Award supports scaled service delivery
- Enrollment aligned with available funding
- Phased relaunch with prioritization

Sustainability Strategy & Funding Coordination

Stabilization

- Awarded **\$800,000 Metro Section 5310** for phased relaunch (FY26–28)
- Prioritized enrollment structure to align with available funding
- Centralized waitlist to ensure equitable and transparent access

Funding Exploration

- Reviewing funding opportunities identified by Metro for potential alignment
- Assessing eligibility under transportation-related local and state sources
- Identifying opportunities to braid or layer funding streams to increase capacity



LOS ANGELES COUNTY

**Aging & Disabilities
Department**



Address

510 S. Vermont Ave., 11th Floor
Los Angeles, CA 90020

Email

info@ad.lacounty.gov

Website

ad.lacounty.gov