

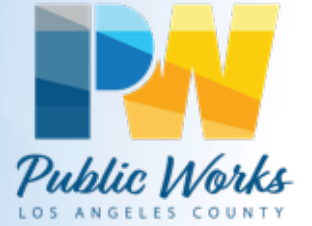
Los Angeles County Waterworks Districts

2025 WATER RATE STUDY

October 29, 2025

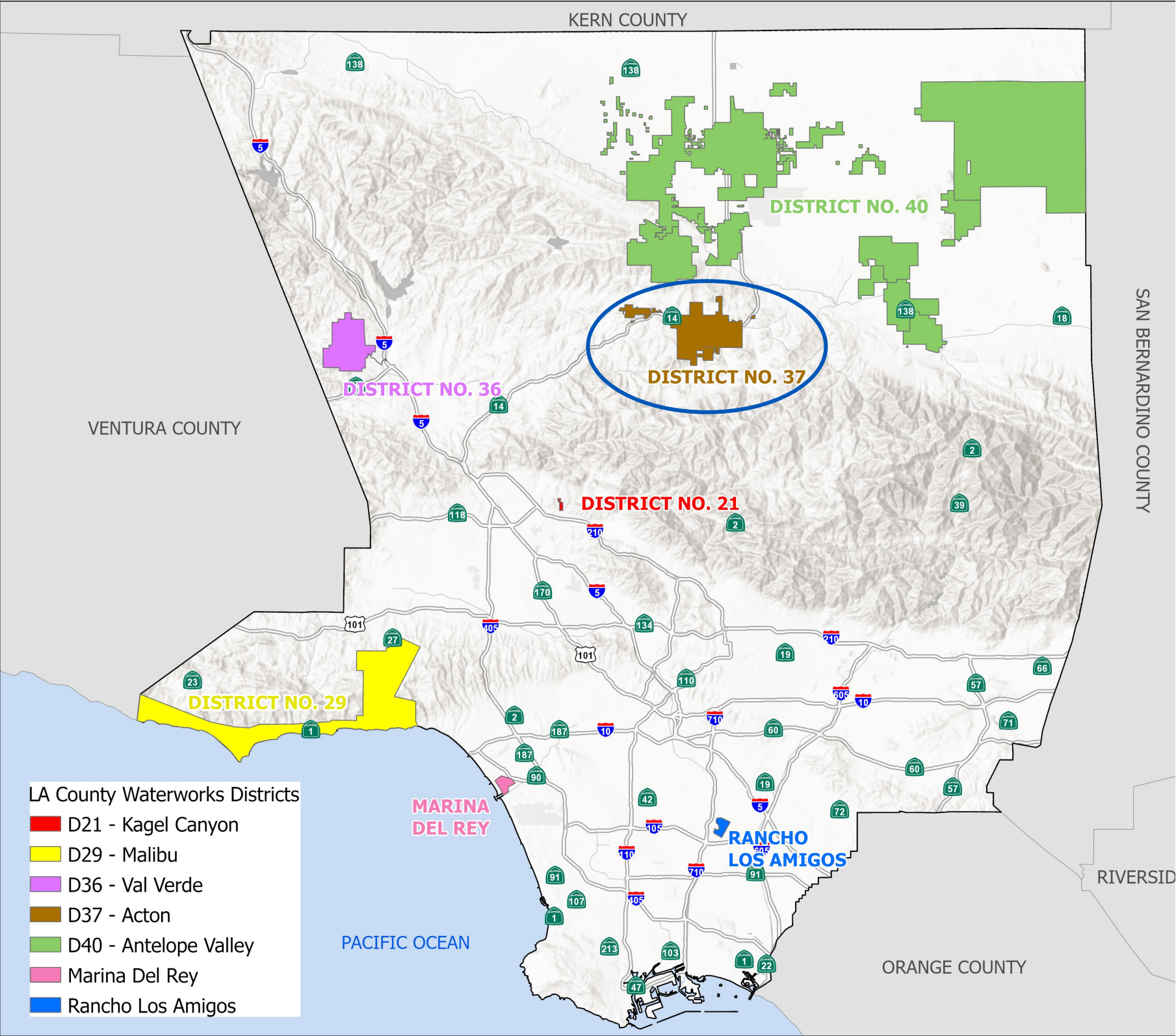
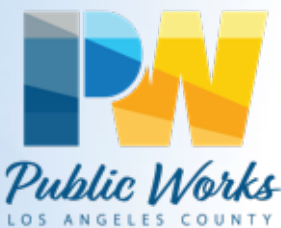


Agenda



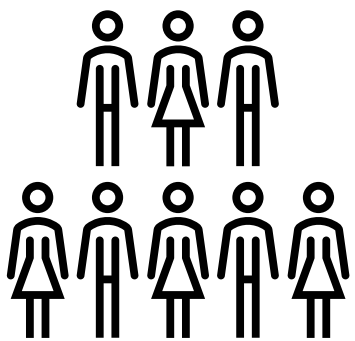
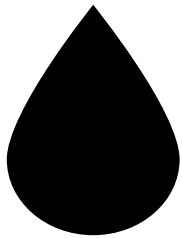
- LA County Waterworks Districts and Our Water Supply
- Rate Setting Process
- Proposed Rates
- Public Participation

Los Angeles County Waterworks Districts Service Areas



18 Billion Gallons

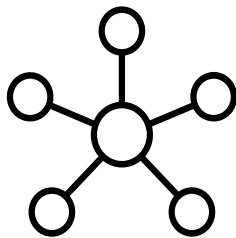
Yearly Water
Supply



260,000
Residents
Served

2/3 of Supply

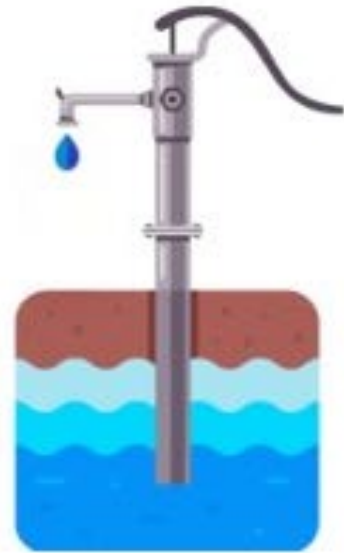
Imported
Water



Infrastructure by the Numbers



LA COUNTY WATERWORKS DISTRICTS



54
GROUND
WATER
WELLS



70,995
SERVICE
CONNECTIONS



184
PUMP &
REGULATING
STATIONS

117
RESERVOIRS



TOTAL
STORAGE OF **99.3** MILLION
GALLONS

10,172
HYDRANTS



1,408 MILES OF
WATER
MAINS

Water Quality by the Numbers



LA COUNTY WATERWORKS DISTRICT

TESTED FOR
145
CONTAMINANTS



OVER 279 THOUSAND
PEOPLE SERVED



279,109

8,707 WATER
SAMPLES
COLLECTED



TESTS
PERFORMED
ON

59



DRINKING
WATER
SOURCES

21,931



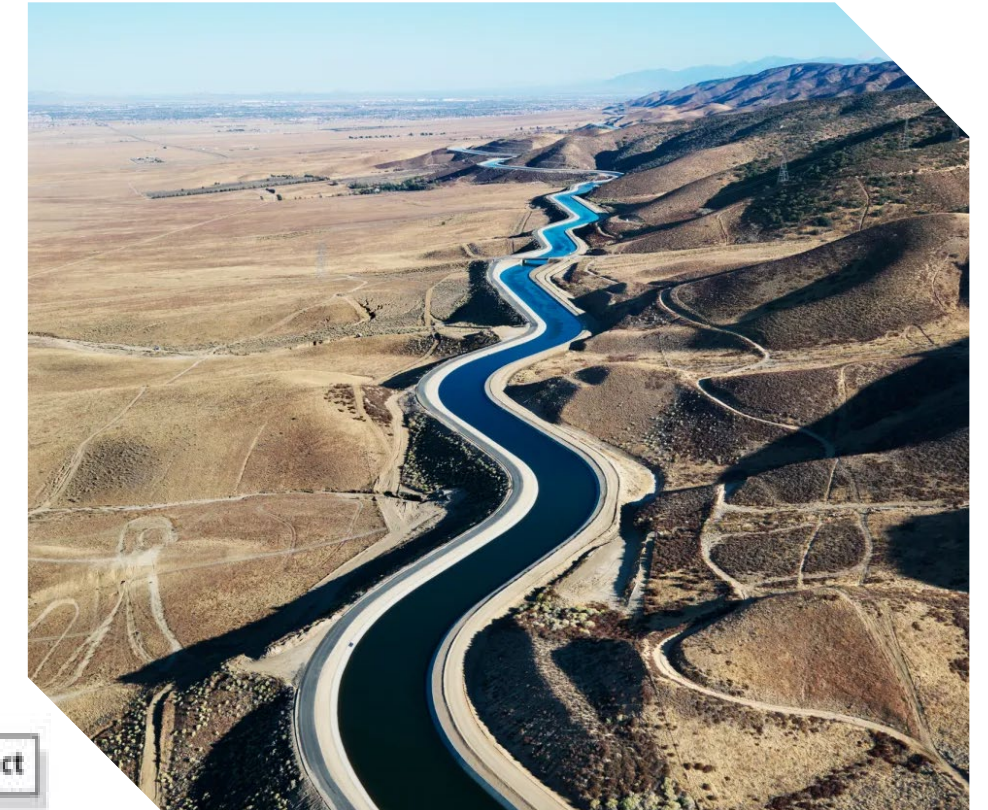
TESTS PERFORMED
TO MONITOR AND
ENSURE QUALITY

Water Sources

Los Angeles County's water supply is a diverse mix, drawing from local resources and extensive imported water systems.

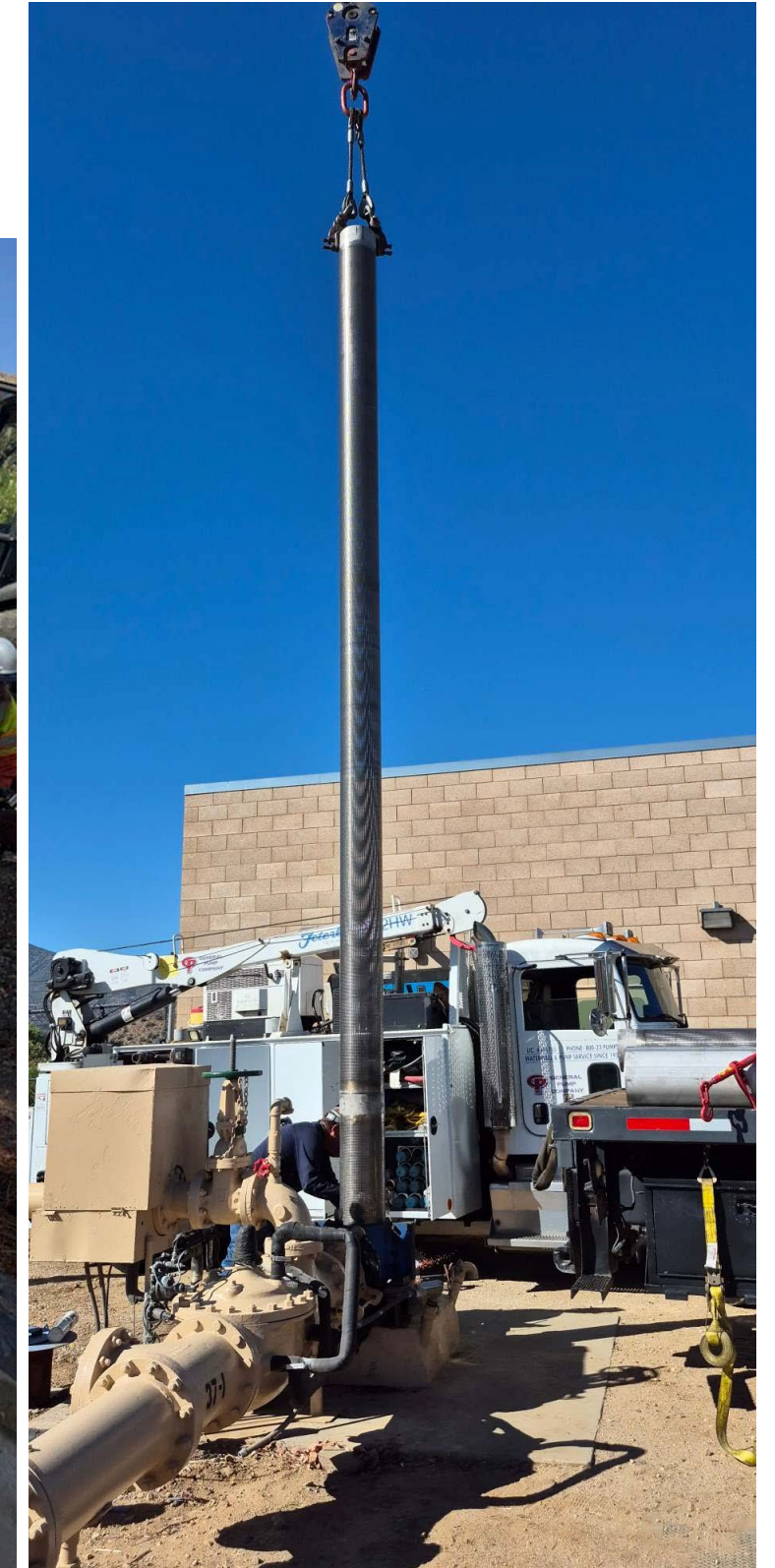
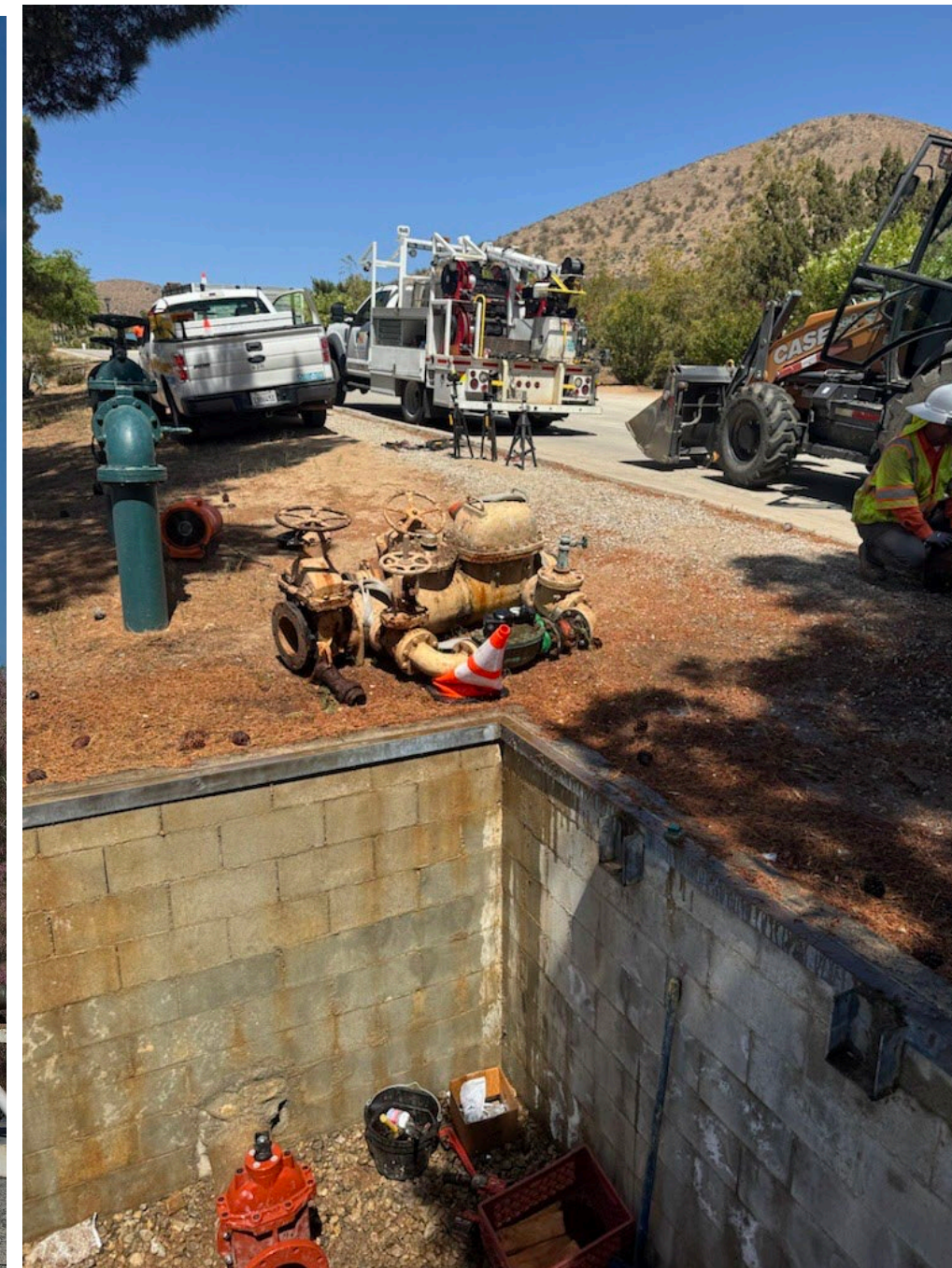
Key Water Sources:

- Groundwater
- Imported Water - State Water Project, Colorado River Aqueduct



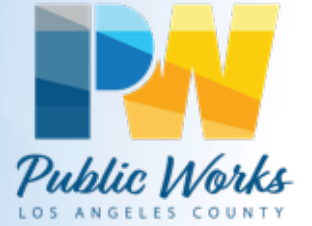
Investing in Service Reliability

Upgrading and maintaining critical infrastructure to reduce service interruptions and extend the life of critical systems.



Rate Study Process

Pass-through Adjustments & General Rate Increase



Pass-through Rate Adjustments (annual)

- Increased cost of purchased water from water wholesalers (AVEK, WBMWD, LADWP).
- Increased costs due to inflation.

General Rate Increase (last increase approved 2004, 2006, 2012)

- Investing in service reliability:
 - Capital Investment
 - Operating costs
- Regulatory compliance - State and federal water quality, environmental and operational regulations

What is a Rate Study?

A financial planning process to set rates that consider:



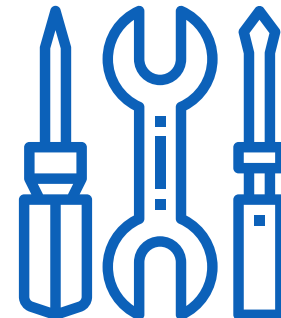
**Fairness &
Equity**



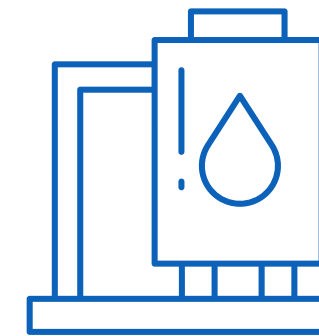
**Community
Values**



**Utility Financial
Viability**



**Operations &
Maintenance**



**Infrastructure
Investment**



**Legally
Defensible**

Purpose of a Rate Study

- Budgeting Tool
- Transparency and Financial Planning
- Helps Manage Capital Planning
- Plan for and Meet State/Federal Regulations
- Operations and Maintenance Upkeep
- Plan and Implement Capital Improvement Plan (CIP)



How We'll Get There



Fund Operations



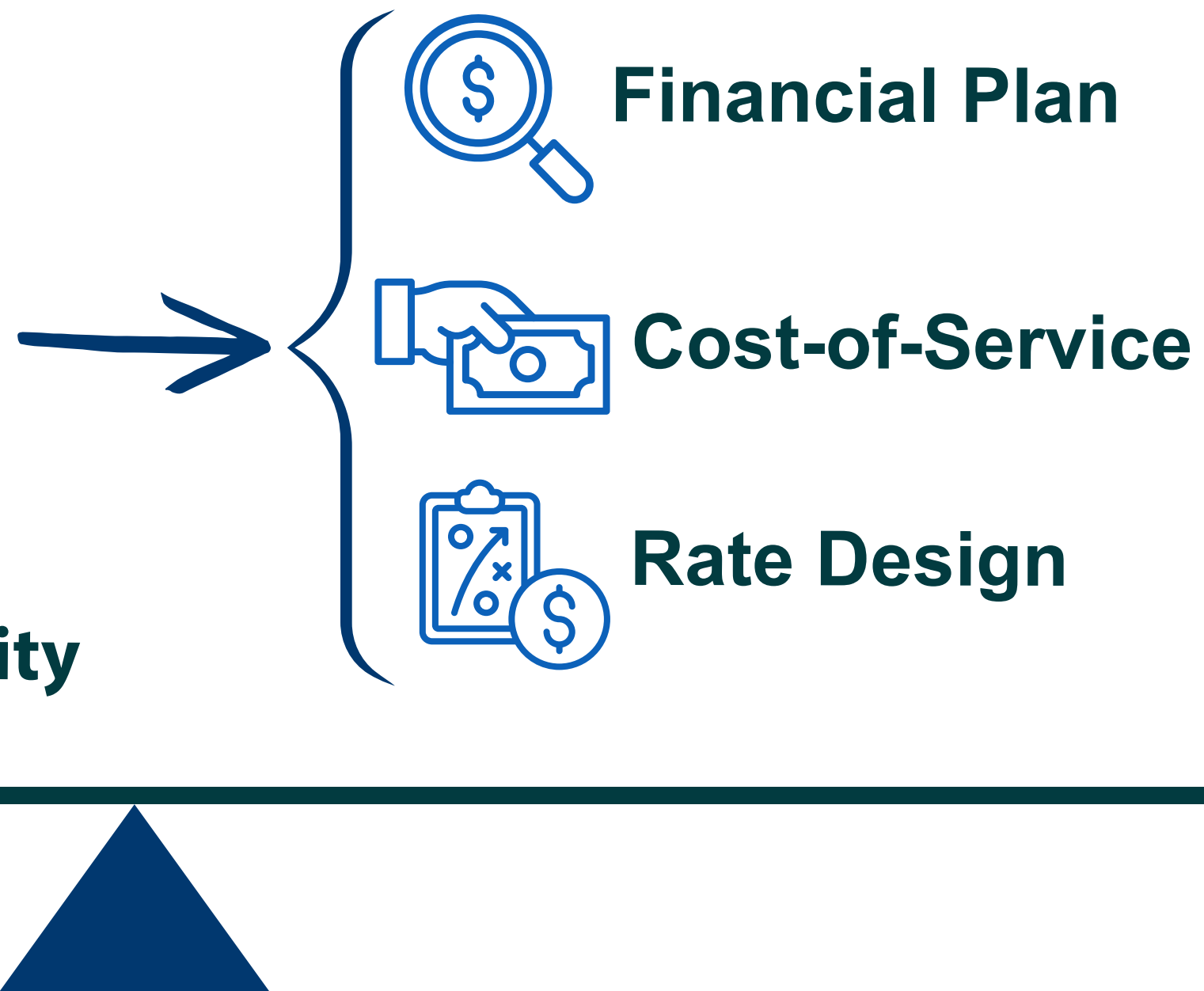
Fund Capital Projects



Maintain Reserves



Ensure Customer Rate Equity

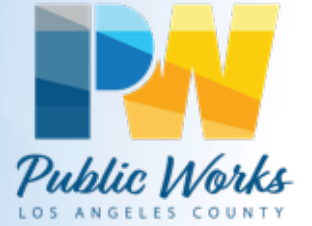


Proposed Rates

Typical Monthly Single Family Bill Impacts

District No. 21, Kagel Canyon ⁽²⁾						
Year	Current	2026*	2027	2028	2029	2030
Average Monthly Bill	\$65.09	\$87.85	\$93.12	\$98.71	\$104.63	\$110.91
Average Monthly Bill Increase (Year to Year)		\$22.76	\$5.27	\$5.59	\$5.92	\$6.28
District No. 29, Malibu ⁽³⁾						
Year	Current	2026*	2027	2028	2029	2030
Average Monthly Bill	\$222.90	\$306.17	\$326.07	\$347.27	\$369.84	\$393.88
Average Monthly Bill Increase (Year to Year)		\$83.27	\$19.90	\$21.19	\$22.57	\$24.04
District No. 36, Val Verde ⁽²⁾						
Year	Current	2026*	2027	2028	2029	2030
Average Monthly Bill	\$80.19	\$90.55	\$93.27	\$96.06	\$98.95	\$101.91
Average Monthly Bill Increase (Year to Year)		\$10.36	\$2.72	\$2.80	\$2.88	\$2.97
District No. 37, Acton ⁽²⁾						
Year	Current	2026*	2027	2028	2029	2030
Average Monthly Bill	\$88.13	\$96.15	\$99.03	\$102.01	\$105.07	\$108.22
Average Monthly Bill Increase (Year to Year)		\$8.02	\$2.88	\$2.97	\$3.06	\$3.15
District No. 40, Antelope Valley ⁽⁴⁾						
Year	Current	2026*	2027	2028	2029	2030
Average Monthly Bill	\$52.56	\$64.98	\$68.88	\$73.01	\$77.39	\$82.04
Average Monthly Bill Increase (Year to Year)		\$12.42	\$3.90	\$4.13	\$4.38	\$4.64

Resources

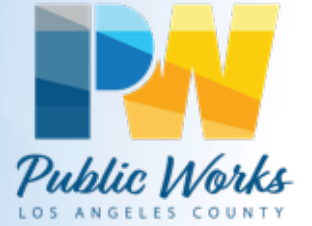


- Community Engagement:
 - 5 - Virtual Community Workshops
 - 10 – Town Council Meetings
 - 2- Open House Events
 - 3-City Council Meetings
- 2025 Rate Study Website
 - Bill Calculator
 - Factsheet
 - FAQ



pw.lacounty.gov/go/Prop218-WWD

Public Hearing



Tuesday, December 16, 2025, 9:30 a.m.
County Board of Supervisors Hearing Room #381
Kenneth Hahn Hall of Administration
500 West Temple Street, Los Angeles 90012
(corner of Temple Street and Grand Avenue)

Thank You!



pw.lacounty.gov