



Los Angeles County Office of Violence Prevention

Gender Based Violence (GBV) Prevention Policy Deputies Meeting

September 18, 2025

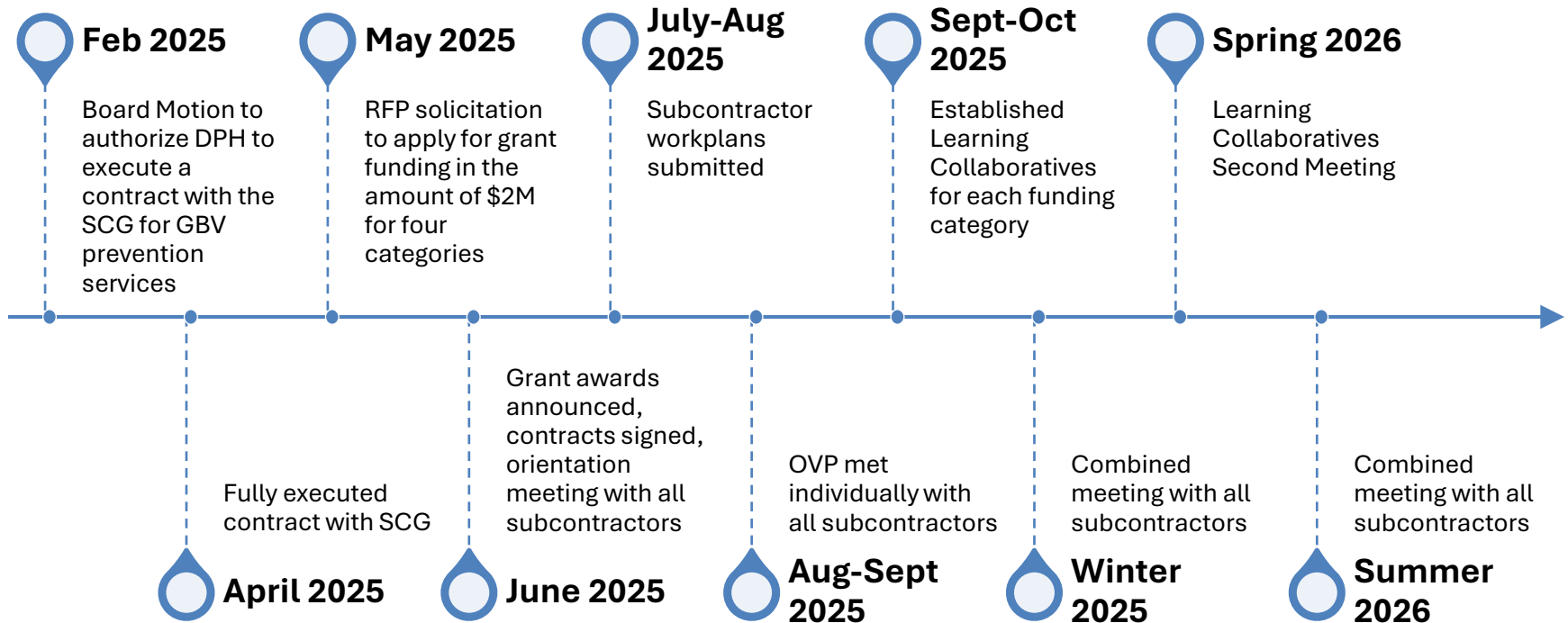


GBV Program Updates

Clara Chang



GBV Prevention Community Grant Timeline



GBV Prevention Community Grant – Learning Collaborative Objectives

- Facilitate the sharing of information and resources across GBV subcontractors within each category of funding
- Increase awareness of GBV subcontractors' activities, progress, and impact
- Promote the exchange of best practices to improve implementation
- Connect County departments with community partners, highlight ongoing GBV-related efforts, and open opportunities for partnership
- Strengthen inter-agency partnerships beyond the grant period

GBV Prevention Community Grant – Learning Collaborative Subcontractors

Healthy Relationships Education and Training	Engaging Men and Boys	LGBTQ+ Youth Peer Leadership	Economic Empowerment for Women and Girls
(SD1) Alma Family Services (SD2) Inner City Visions (SD3) Haven Hills (SD4) Interval House (SD5) Child & Family Center	(Countywide) Jail Guitar Doors The Prism Way	(Countywide) Minority AIDS Project Latino Equality Alliance Men's Health Foundation	(Countywide) Maternal & Child Health Access Sanctuary of Hope

GBV Prevention Community Grant – Learning Collaborative County Presenters

Healthy Relationships Education and Training	Engaging Men and Boys	LGBTQ+ Youth Peer Leadership	Economic Empowerment for Women and Girls
Department of Youth Development	Department of Youth Development	LGBTQ+ Commission Department of Youth Development	Women's Commission Department of Economic Opportunity

GBV Prevention Initiative Work Plan

- **Short Term Goal:** Invest in upstream solutions to reduce and prevent gender-based violence, especially in communities that are most impacted. Leverage existing resources to increase awareness.
- **Medium Term Goal:** Increase coordination between and among county and community partners to reduce fragmentation and increase access to services.
- **Long Term Goals:** Data Collection and Advocacy

Short Term Goals

Invest in upstream solutions to reduce and prevent gender-based violence, especially in communities that are most impacted. Leverage existing resources to increase awareness.

TIMEFRAME	ACTIVITIES
Completed	Establish the GBV Policy Deputies Meeting as a central hub for policy development and alignment.
Completed	Release and award the GBV Prevention Community Grant (\$2 million across four focus areas), supporting community-based prevention strategies.
15 days	Finalize and disseminate the GBV Landscape Analysis that outlines the current landscape of GBV primary prevention services among LA County Departments.
60 days	Leverage existing tools (e.g., DV Prevention Toolkit, GERDA training) for Countywide education and awareness.
60 days	Host a GBV Learning Collaborative for GBV Grantees and community partners to share resources, best practices, and align strategies.

Medium Term Goals

Increase coordination between and among county and community partners to reduce fragmentation and increase access to services.

TIMEFRAME	ACTIVITIES
120 days	Publish GBV Webpage for coordination of resources, data, and other public information.
360 days	Initiate Phase II of GBV Landscape Analysis to focus on understanding community-based primary prevention GBV services and incorporating the voices of survivors.
360 days	Begin planning for a Spring 2026 GBV Convening to highlight grantee work and impacts, elevate best practices, and connect county and community partners to improve coordination of GBV prevention services.

Long Term Goals

Data collection and advocacy

TIMEFRAME	ACTIVITIES
2026-2027	Monitor both quantitative outcomes (participation, reach, measurable impacts) and qualitative impacts (healing, community resilience).
	Monitor and support GBV-related legislation at state and local levels.
	Elevate community-informed policy recommendations through the Deputies Meeting.
	Advocate for sustained funding streams to ensure long-term program viability.
	Develop a centralized GBV dashboard to publicly track initiative outcomes.

Update: GBV Landscape Analysis

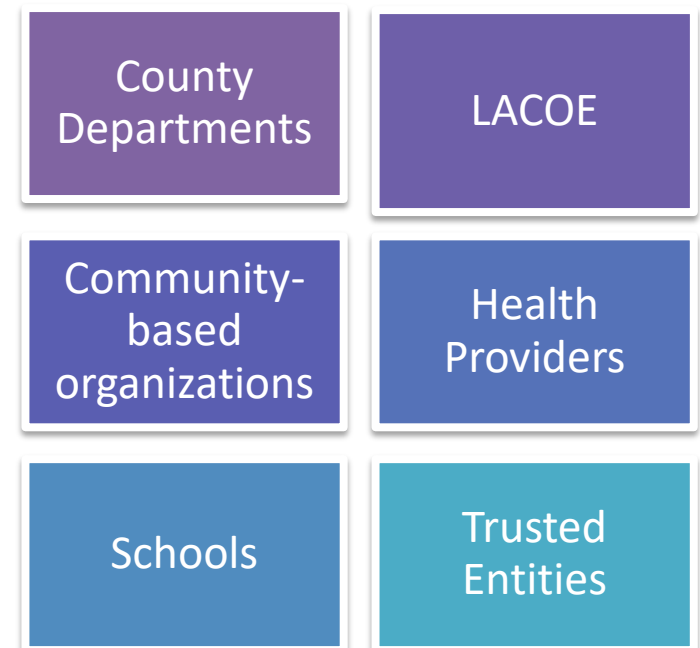
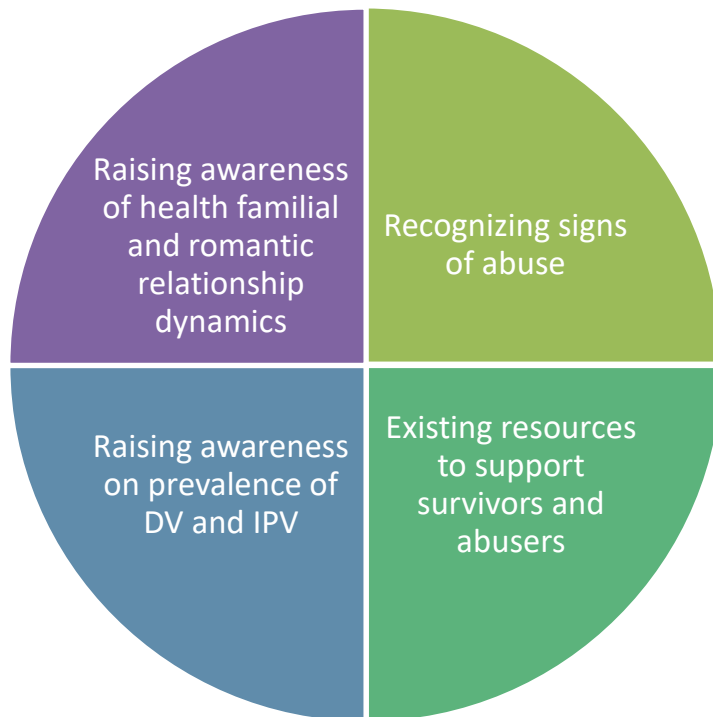
- Report has been finalized and will be disseminated to board offices, community and county partners.
- OVP connected with CEO to obtain the ARDI PPCIT survey results, which focused on family well-being, child abuse prevention, and healthy birth outcomes. Although different in scope, the information was helpful to reference.

DV Awareness Board Motion & Toolkit

Sonata Lee Narcisse

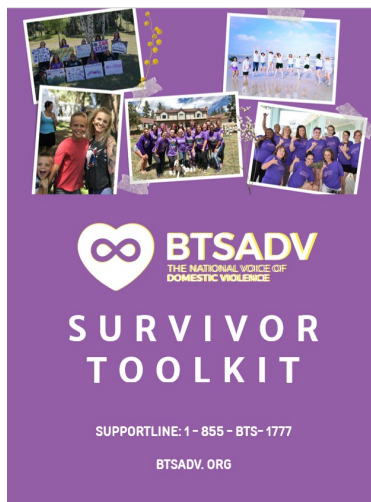
Board Motion Directives

Toolkit will address four critical areas for breaking the cycle of domestic and intimate partner violence and be distributed by key County and community partners. Read the full motion [here](#).



Toolkit Research

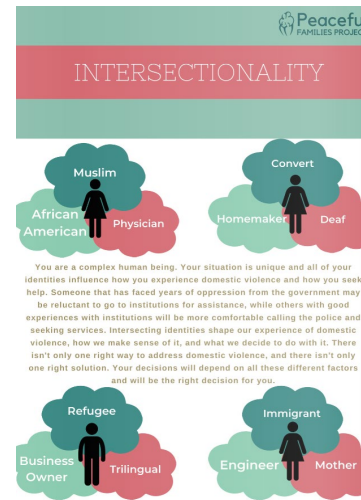
Domestic Violence Awareness Toolkits



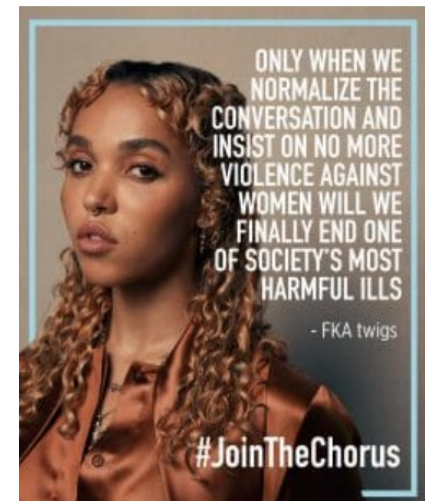
Break the
Silence Against
Domestic
Violence



Futures
Without
Violence



Peaceful
Families



NO MORE

Teen Dating Violence in Los Angeles County

In 2023 LA County was home to 1.6 million youth and young adults ages 12-24.

High School Students (LAUSD)

- Sexual dating violence: 7.3%
- Physical dating violence: 5.7%

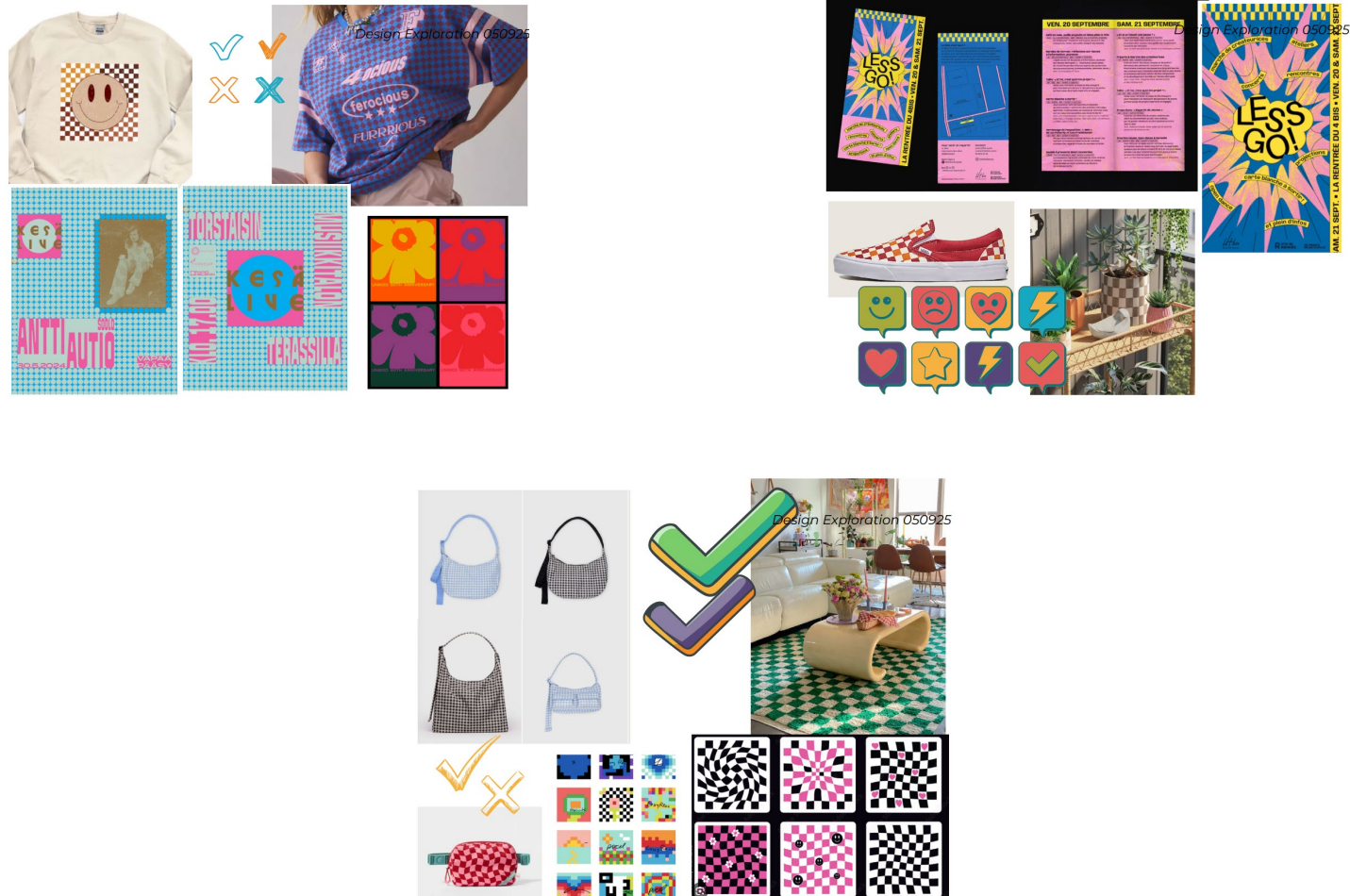
Young Adults (Ages 18-24)

- Physical and/or sexual violence by intimate partner: 8.3%

1. [2021 Youth Risk Behavior Survey. Centers for Disease Control and Prevention. Available: <https://nccd.cdc.gov/Youthonline/App/Default.aspx>. Accessed 5/22/2023.

2. 2023 Los Angeles County Health Survey; Office of Health Assessment and Epidemiology, Los Angeles County Department of Public Health.

Teen Dating Toolkit Design Exploration



Check for Respect: Teen Dating Violence Prevention Toolkit

 **Check for Respect**

A Quick Guide to Healthy Relationships for Teens 

What Does "Check for Respect" Mean?
Respect is the foundation of every healthy relationship. To check for respect, ask:

- ☒ Am I being treated with care, honesty, and equality?
- ☒ Are my boundaries honored and my voice heard?
- ☒ Do I feel safe, valued, and free to be myself?

Consent Is Respect.
Consent isn't just about sex. It's about making sure every person involved feels safe, ready, and comfortable, every time.

Red Flags 
Guilt-tripping or pressure
"You owe me this!"
Anger or sulking when you say "no"

Green Flags 
"Is this okay?"
"Do you want to stop?"
"Should we slow down?"

Boundaries = Respect.
Boundaries help define what you are comfortable with and how you want to be treated.

Unhealthy 
"If you love me, you won't hang out with anyone else."
"I need to check your phone – it's not about trust."

Healthy 
"I want to hang out, but I need space sometimes."
"I'm okay holding hands, but I'm not ready for more."

Self Check-In. Ask yourself:

- ☒ Do I feel safe and respected when we disagree?
- ☒ Can I say no without fearing the relationship will end?
- ☒ Are we equal partners in decision-making?

If not... it's time to **check for respect**.

Respect Includes Everyone.
No matter your race, gender, identity, or background, you deserve respectful love. Support each other by:

- ☒ Listening without judgment
- ☒ Celebrating differences
- ☒ Asking: "How can I support you?"

Need Support? You're Not Alone.

Love Is Respect
24/7 Help for Teens
Text LOVEIS to 22522
Chat at loveisrespect.org

National Domestic Violence Hotline
1-800-799-SAFE (7233)

Teen Line
Call 800-852-8336 from 9-10pm PST
Text TEEN to 839863 6-9pm PST

LOS ANGELES COUNTY   **County of Los Angeles Public Health**

One-pager

 **Check for Respect**

What Does "Check for Respect" Mean?
Am I being treated with care, honesty, and equality?
Are my boundaries honored and my voice heard?
Do I feel safe, valued, and free to be myself?

Consent Is Respect.

Red Flags 
Guilt-tripping or pressure
"You owe me this."
Anger or sulking when you say "no."

Green Flags 
"Is this okay?"
"Do you want to stop?"
"Should we slow down?"

Boundaries = Respect.

Unhealthy 
"If you love me, you won't hang out with anyone else."
"I need to check your phone – it's not about trust."

Healthy 
"I want to hang out, but I need space sometimes."
"I'm okay holding hands, but I'm not ready for more."

Self Check-In. Ask yourself: Can I say no without fearing the relationship will end? If not... it's time to **Check for Respect**.

Respect Includes Everyone. No matter your race, gender, identity, or background, you deserve respectful love.

Need Support? You're Not Alone.

Love Is Respect
24/7 Help for Teens
Text LOVEIS to 22522
Chat at loveisrespect.org

National Domestic Violence Hotline
Call 800-799-SAFE (7233)

Teen Line
Call 800-852-8336 from 9-10pm PST
Text TEEN to 839863 from 6-9pm PST

LOS ANGELES COUNTY   **County of Los Angeles Public Health**

Poster

Check for Respect: Teen Dating Violence Prevention Toolkit



Postcard front



Postcard back

Check for Respect: Teen Dating Violence Prevention Toolkit

Sticker sheet



Individual die-cut stickers



Kiss-cut sticker sheet with custom backing*

DV Prevention Toolkit Dissemination Plan

Teen Line hotline
and outreach

LASD patrol
stations, town
halls, community
events

Schools via LACOE
& Public Health
Wellbeing Centers

Board Offices

County and
Community
partners

DVC and OWH
partners

Thank you

CONTACT:

Sonata Lee Narcisse

Public Information Specialist

LA County Office of Violence Prevention

Email: sleenarcisse@ph.lacounty.gov

Phone: (213) 757-0756

LA County Domestic Violence Council (DVC) LIVED EXPERIENCE ADVISORY PEER GROUP (LEAP)

Lan Pham, DVC Executive Director

Ashley Phillips, DVC Sr. Health Program Analyst

Gender-Based Violence Workgroup

September 18th, 2025

1:30PM to 3:30PM

Background

- ❑ On September 24, 2024, the Los Angeles County Board of Supervisors passed a Motion Proclaiming October 2024 as Domestic Violence Awareness Month and October 16, 2024, as Domestic Violence Providers Appreciation Day.
- ❑ The motion further directed, “the **Los Angeles County Domestic Violence Council to establish an Ad Hoc Advisory Committee within the Domestic Violence Council to engage with Los Angeles County domestic violence survivors to provide recommendations** on how Los Angeles County may improve policies, protocols, training, and other efforts to improve response, access, services, and support for survivors of domestic/intimate partner violence.”
- ❑ The Ad Hoc Committee will be **comprised of and led by domestic violence survivors; and will recruit domestic violence survivors and gender-based violence survivors to be a part of its membership**...and provide a written report to the Board of Supervisors in 180 days with recommendations on how Los Angeles County may improve its response, services, and support for survivors and their families.

Outreach and Recruitment

- ❑ The DVC formally launched the recruitment of new Ad Hoc Committee – the Lived Experience Advisory Peer (LEAP) Group at the second Annual Domestic Violence Awareness Month (DVAM) Breakfast in 2024; an event attended by 300+ individuals, most were survivors and/or those working to end domestic violence.
- ❑ The DVC also recruited LEAP members via flyers and announcements at DVC meetings, via DVC bi-monthly email postings, and email announcements to those on the DVC listserv (1,000+ recipients).
- ❑ Active recruitment was successful in identifying LEAP members and those qualified for the positions of Co-Chairs.
- ❑ LEAP Co-Chairs were selected based on to their (1) active participation in LEAP meetings, (2) active participation in the DVC meetings, (3) lived experience leadership exemplified by history of work in the field of domestic violence, and (4) current or previously held leadership roles in the community. Below is a brief description of the three (3) Co-Chairs' background and experience.

LEAP Co-Chairs



Dachele Kendrick

Director

**Survivor Empowerment
Services**

YWCA Greater Los
Angeles



Roman James

Commissioner

Commission for Children and
Families



Tina Rios

Co-Founder

Reimagine Child Safety
Coalition

Planning

- ❑ LEAP Co-Chairs convened for seven (7) planning sessions before the group launched the “Survivor Supportive Space” in February 2025 (which continues to meet monthly).
- ❑ During LEAP Planning meetings, Co-Chairs identified 3 questions to be included in the Survivor Supportive Space meeting registration form. These served as initial data for LEAP’s program and work-planning purposes.
- ❑ The questions included:
 1. *In your experience, how may Los Angeles County improve policies, protocols, training, and other efforts to improve support, services, access, and response for survivors?*
 2. *(My lived experience included challenges in working with the following systems (multiple choice)*
 3. *In your experience, what are the top 3 most critical needs for survivors?*

Themes (surveys and group discussion)

B. LEAP participants identified eight (8) critical issues in order of importance to be addressed by LA County.

ISSUES	DESCRIPTION
1. Safety	<ul style="list-style-type: none">▪ Obtaining safety and protection orders. Restraining orders are not always helpful. Alternative options may include relocation.
2. Shelter and Housing	<ul style="list-style-type: none">▪ Increase access to shelter, housing, hotel/motel vouchers, and other housing options
3. Financial support	<ul style="list-style-type: none">▪ Increase financial support, employment training, employment options
4. Mental Health	<ul style="list-style-type: none">▪ Access to peer support for self-empowerment, self-love, healing, and acknowledgement of survivor experiences▪ Access to mental health and therapeutic services
5. Legal services	<ul style="list-style-type: none">▪ Access to legal support and assistance especially for survivors who are victim-defendant and those with children who may be impacted by child welfare.▪ No established mechanism for follow through when cases cross jurisdictions (e.g., cases falling under purview of both the military and state)
6. Training	<ul style="list-style-type: none">▪ Trauma informed training for service providers, systems responders, court systems
7. Information	<ul style="list-style-type: none">▪ Accessing useful information can difficult.▪ Lack of information about the systems (e.g., child support, child welfare, legal, etc.) and protocols by which they're governed is a barrier to successfully navigating said systems
8. Representation	<ul style="list-style-type: none">▪ Include survivor voices at all stages of program development, data collection, etc.

Survivor Supportive Space

- ❑ The Survivor Supportive Space is a space **created for survivors and by survivors** for the purpose of providing mutual support, while working to address issues of access.
- ❑ The goal is to **provide a supportive and empowering environment where survivors can process experiences, identify current needs, and work together to recommend strategies for systemic change.**
- ❑ Through collective impact, the **group aims to inform and improve LA County policies, protocols, training, and services to better support survivors** of domestic and intimate partner violence. Everything shared in this space contributes to the larger vision of systemic transformation, ensuring that survivor voices guide the improvements needed in LA County communities.



Survivor Supportive Space

- ❑ The first LEAP “Survivor Supportive Space” meeting was held on February 26, 2025, from 9:30am to 11:00am via MS Teams.

- ❑ The meeting was attended by 33 people:
 - 27 survivors (LEAP members),
 - 3 Co-Chairs
 - 3 DVC Staff

- ❑ Of the 27 LEAP members:
 - 20 (74%) were service providers
 - 7 (26%) were non providers
 - All identified as female

The group discussed that membership to LEAP should remain open for the next three meetings.

The group closed membership in July and now to work planning and implementation of identified projects.

Surviving To Thriving

- ❑ On May 9th, 2025, LEAP led an event held at the California Family Foundation in partnership with City of Los Angeles Domestic Violence Alliance.
- ❑ The event was attended by nearly 100 individuals including survivors, service providers, and elected officials.
- ❑ During May, Mental Health Awareness Month, the event featured survivors and regional experts to speak on the intersectionality of domestic violence and mental health.
- ❑ LEAP, DVC, and DVA were recognized at the event by CA Senator Rubio for work to address DV!



Projects for 2025/2026

1. **Culturally Competent Led Protections**
2. **Post Crisis Supportive Services**
3. **Court Watch – GBV Court**





Domestic Violence Awareness Month (DVAM) Breakfast

October 23rd, 2025, from 8:30am to 12:30pm

Includes announcement of the
Breaking Silence Survivor Activist Award recipients

Thank you!

For more information
DVC@ph.lacounty.gov