

HOMELESS POLICY DEPUTIES MEETING AGENDA

MEETING WILL TAKE PLACE IN PERSON WITH A VIRTUAL OPTION

Date: Thursday, September 11, 2025
Time: 2:00 – 4:00 PM
Location: Kenneth Hahn Hall of Administration
500 West Temple St.
Room 374-A
Los Angeles, CA 90012

To subscribe to emails for this meeting, [please click here.](#)

For members of the public who wish to join virtually or over the phone, please see below:

Microsoft Teams Link: [Click here to join the meeting](#)

Teleconference Number: [+1 323-776-6996,,110359772#](#)

For Spanish interpretation, members of the public should send emails within 48 hours in advance of the meeting to ClusterAccommodationRequest@bos.lacounty.gov

	AGENDA ITEM	LEAD
I.	Welcome and Introductions	Lilit Bagdzhyan, Fifth District
II.	Managed Care Plan Partnerships	<p>Leepi Shimkhada Interim Director, Housing for Health, Los Angeles County Department of Health Services</p> <p>Molly Rysman Director of Policy and Planning, Housing for Health, Los Angeles County Department of Health Services</p> <p>Carly Goldblatt Program Manager III, Health Net</p> <p>Charlie Robinson Senior Director of Community Health, Los Angeles Care Health Plan</p> <p>Gary Tsai, M.D. Director, Substance Abuse Prevention and Control Bureau, Los Angeles County Department of Public Health</p> <p>Rimmi Hundal</p>

		Chief Deputy Director, Los Angeles County Department of Mental Health
III.	Items Recommended for Future Discussion	
IV.	Public Comment*	

* Public Comment is limited to one minute. Those joining virtually interested in speaking should raise their hand on Microsoft Teams and unmute once called upon by the Chair. Those on their phones should press *5 to raise their hand and *6 to unmute.

NEXT MEETING: September 25, 2025

Managed Care Plan Partnerships

Department of Homeless Services and Housing

Homeless Deputies



**Chief
Executive
Office.**



County of Los Angeles
**Homeless
Initiative**





CalAIM Community Supports

HIGHLIGHTS

- **California Advancing and Innovating Medi-Cal (CalAIM)** is led by the state's Department of Health Care Services
- CalAIM planning launched in 2019 and the waiver continues through **December 2026**
- CalAIM is made possible by **state and federal funding** and was approved as part of the **1115 demonstration and 1915(b) waiver** by the federal Center for Medicaid Services on December 29, 2021
- CalAIM addresses Managed Care Plan (MCP) member's health-related social needs by supporting members in **securing and maintaining housing, personal care, and community-based services**
- **15** Community Supports are available under CalAIM
- Housing for Health currently has executed contracts for **6 of the 15 Community Supports**



HFH CalAIM Community Supports

CalAIM Community Supports	L.A. Care	Health Net	Molina	Kaiser	Blue Shield	Anthem
Housing Transition/Navigation Services	✓	✓	✓	✓	✓	✓
Housing Tenancy & Sustaining Services	✓	✓	✓	✓	✓	✓
Housing Deposits	✓	✓	✓	✓	No	✓
Recuperative Care	✓	✓	✓	✓	✓	✓
Personal Care/Homemaker Services	✓	✓	✓	No	No	✓
Short-Term Post Hospitalization	✓	TBD	TBD	TBD	TBD	TBD
Enhanced Care Management	Coming in 2026	TBD	TBD	TBD	TBD	TBD
Transitional Rent	Coming in 2026	Coming in 2026	Coming in 2026	Coming in 2026	Coming in 2026	Coming in 2026



HFH CalAIM Community Supports

On August 27, 2025:

CalAIM Community Supports	L.A. Care	Health Net	Molina	Kaiser	Blue Shield	Anthem	Total
HFH Members Authorized for Tenancy Support Services/Housing Navigation (TSS/TN)	11,746	3,690	2,680	741	1,270	2,573	22,700
HFH Members Authorized for Recuperative Care or Short-Term Post Hospitalization (STPH)	88	18	8	0	3	3	120
Percentage of Members Authorized by Managed Care Plans	51.9%	16.2%	11.8%	3.2%	5.6%	11.3%	N/A



Additional Partnerships

- LA County Field Medicine Program
- Skid Row Care Collaborative & Skid Row Care Campus
- MacArthur Park Care Collaborative – *coming soon!*
- Mobile Clinics
- Interim Housing Outreach Program
- Housing Acquisition





Homeless Policy Deputies Meeting

Carly Goldblatt, Program Manager
September 11, 2025



Current Partnerships

Partnership with CEO Homeless Initiative



County of Los Angeles
Homeless
Initiative



L.A. Care
HEALTH PLAN



Health Net and LA Care have invested \$114 million to help address the homelessness crisis in LA County through partnering with CEO Homeless Initiative to fund two initial strategies outlined below.

Unit Acquisition

L.A. Care Health Plan and Health Net’s investment is being used to help the County secure housing units in the private rental market to serve people experiencing homelessness who have rental vouchers. This could include leasing entire apartment complexes, expanding opportunities for shared housing, providing additional support to landlords, and more. Leases could run from three to 10 years.

Strategy: secure leases on as many as 1,900 housing units and pay for vacancy coverage, damage repair, trash services, greenspace, maintenance, and/or pest control.

Activities of Daily Living Expansion

Most shelters and interim housing settings are designed for people who can meet their own daily living needs. However, people experiencing homelessness who need help with things like bathing, dressing, or getting in and out of bed, are often deemed too needy for placement and remain unsheltered for longer periods. This investment is being used to assist individuals with ADL needs.

Strategy: 1) create assessment teams that will visit shelters and other interim housing sites to identify people needing ADL help, 2) connect those individuals with caregiver help in interim housing; and 3) place individuals in enriched residential care.

Unit Acquisition Outcomes (as of March 31, 2025)

Units Occupied, Acquired, and Leased

Unit Acquisition Quarter 3 Report (1/1/2025 - 3/31/2025)										
	Units Contracted						Leased Units			
Program Type	New Units	Total Units Available	Not Available	Total Units Under Construction	Total Units Not Available All Time	Total Units All Time	New Leases	Turnover Leases All Time	Total Leased All Time	Occupancy
Master Lease	231	249	42	11	173	910	18	13	511	69%
RPSS	0	62	63	0	84	755	13	13	630	94%
MRSA	17	64	0	40	0	127	38	0	55	63%
ARVU	54	28	0	0	0	160	42	0	93	58%
Total	302	403	105	51	257	1952	111	26	1289	66%

Managed Care Plan Lease Up Data

	1/1/2025- 3/31/2025	All Time
LA Care	42	464
Health Net	7	115
Other	62	710
	111	1,289



County of Los Angeles
Homeless
Initiative



L.A. Care
HEALTH PLAN®



ADL Expansion Outcomes (as of March 31, 2025)

Interim Housing Outreach Program IHCG

IHOP Deliverables (aggregate of LA Care, Health Net, Other MCP, Non MCP) to Date and Term	As of date	# of clients
# of IHOP referrals all time	11/1/2023-3/31/2025	1888
# of IHOP referrals for the term	1/1/2025-3/31/2025	678
# of IHOP assessments all time	11/1/2023-3/31/2025	689
# of IHOP assessments for the term	1/1/2025-3/31/2025	123

Enriched Residential Care (ERC)

ERC Deliverables (aggregate of LA Care, Health Net) to END OF DATE	As of date	# of clients
# of ERC placements all time	3/1/2024-3/31/2025	20
# of new ERC placements during term	1/1/2025-3/31/2025	6

IHCG Deliverables (aggregate of LA Care, Health Net, Other MCP, Non MCP) to END OF TERM DATE	As of date	# of clients and/or % of referral
# of IHCG clients served all time	11/1/2023-3/31/2025	230
# of active IHCG clients served during the term	1/1/2025-3/31/2025	126
At least 80% of clients receiving Caregiving Services in Interim Housing who are assessed to need longer-term caregiving are referred to IHSS, unless they are ineligible for IHSS all time (based on denom from term date)	1/1/2025-3/31/2025	111/126 = 88% (end of the quarter numbers) & 203/230=88% (all time numbers)
At least 80% of MCP clients receiving Care Giving Services in Interim Housing who are assessed to need longer-term caregiving are referred to Personal Care and Homemaker Services Community Supports all time (based on denom from term date)	1/1/2025-3/31/2025	86/126= 68% (end of the quarter numbers) & 137/230=60% (all time numbers)



County of Los Angeles
Homeless
Initiative



L.A. Care
HEALTH PLAN.



health net.

Additional Managed Care Plan/County Partnerships

Grantee/Partner	High Level Overview	Grant Period	Total Investment
DMH	Data Sharing & Integration Infrastructure	10/31/23 – 10/30/25	\$1.5 million total investment
DPH	PH-focused street medicine, encampment support, and Medi-Cal application assistance	10/31/23 – 10/30/25	\$3.5 million total investment
DCBA Stay Housed LA	Eviction prevention and legal aid	5/1/24 – 12/31/26	\$3 million total investment
Brilliant Corners (in partnership with DHS)	Interim housing accessibility fund; \$5 million total investment	4/1/25 – 8/31/28	\$5 million total investment
Field Medicine Providers	LA County Field Medicine Program - capacity building grants and performance incentives for field medicine providers	7/1/24 – 6/30/29	\$60 million total investment
DHS	Skid Row Care Campus	7/1/24 – 6/30/27	\$10 million total investment
JWCH (and LACHC)	Skid Row Care Collaborative	7/1/24 – 6/30/27	\$20 million total investment
DHS	MacArthur Park Health Hub	Coming soon	Coming soon

Housing Community Supports

Health Net's Housing Community Supports Current Offerings

Housing
Deposits

Housing
Transition
Navigation

Housing
Tenancy and
Sustaining

Recuperative
care

Day
Habilitation

Short-term
post
hospitalization

Housing Trio Community Supports

Community Supports	Description
Housing Deposits	Funding for one-time services necessary to establish a household , including security deposits to obtain a lease, first month's coverage of utilities.
Housing Transition Navigation	Assistance with obtaining housing. This may include assistance with searching for housing or completing housing applications, as well as developing an individual housing support plan.
Housing Tenancy and Sustaining Services	Assistance with maintaining stable tenancy once housing is secured. This may include interventions for behaviors that may jeopardize housing, such as late rental payment and services to develop financial literacy.

The Interim Housing Trio



Recuperative Care

- Time to heal from injury or illness for those who are experiencing homelessness



Day Habilitation

- Supports to improve self-help, socialization, and adaptive skills within the community



STPHH

- Opportunity to continue recovery in interim housing after exiting an inpatient hospital



Housing Community Supports Utilization for Health Net - Los Angeles

Over 19,000 unique utilizers

990,000 claims

34% of unique utilizers are from age group 50-64 years old

37% of unique utilizers are labeled as housing transition navigation services

40% of unique utilizers are from Black or African American members

Transitional Rent

Transitional Rent Overview

Transitional Rent (TR) is designed to provide a time-limited opportunity (up to 6 months of rent) for transitioning populations who meet certain clinical criteria to exit homelessness and establish a bridge to permanent housing. TR is not intended to support permanent housing solutions.

Health Net will go live with TR on January 1st, 2026, in all contracted counties beginning with the Behavioral Health Population of Focus (PoF). Other PoFs TBA.

TR will cover rental assistance and specific fees necessary to secure and maintain the unit (those that are charged as part of the rent payment)



The goal of TR is to transition members to permanent rental assistance or permanent supportive housing on or before the 6 months of support expire



TR should be provided in conjunction with ECM and CS services






Transitional Rent Eligibility-BH POF

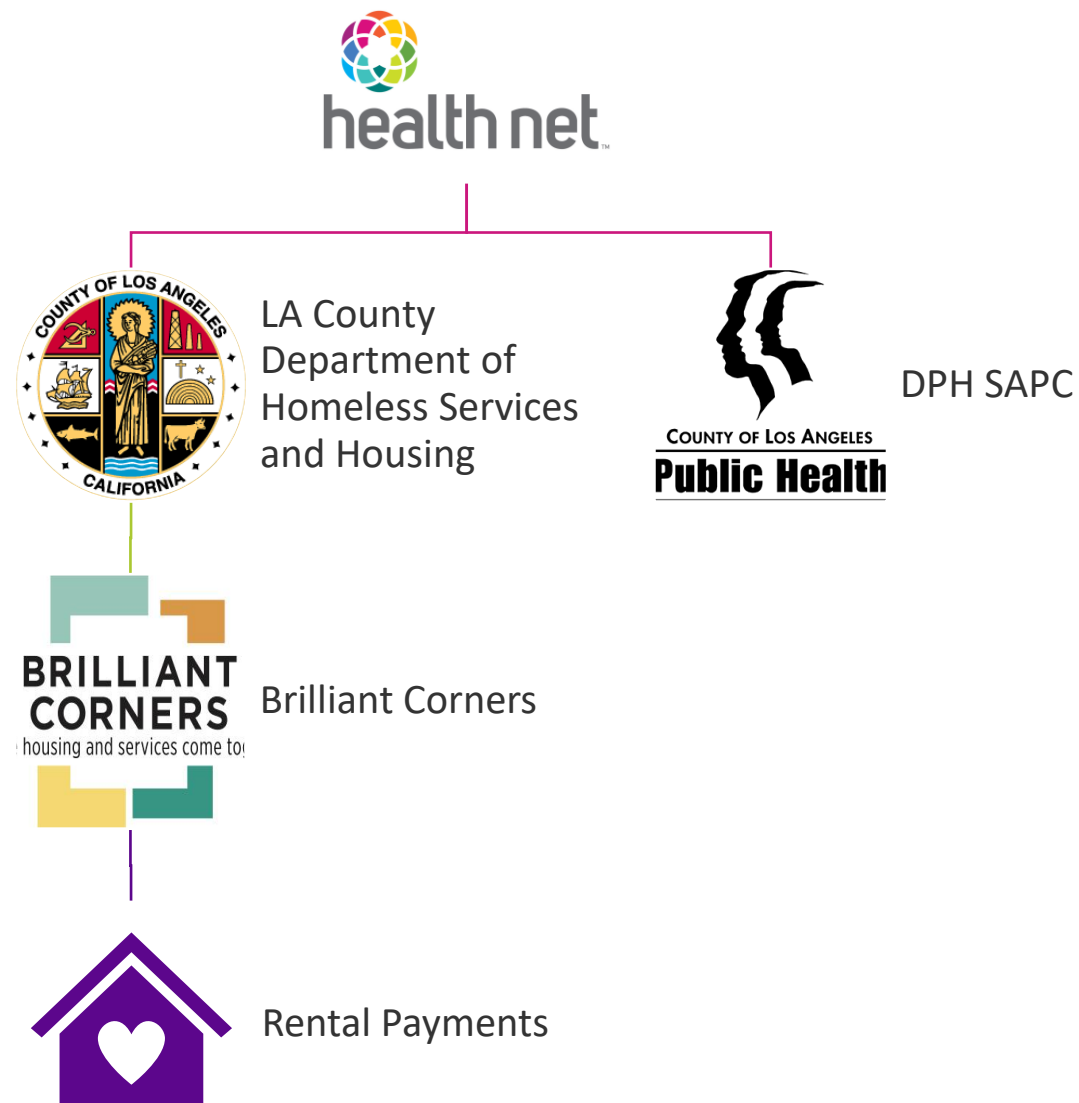
Must meet the following 3 eligibility criteria:

Behavioral Health Population of Focus

The BH POF for Transitional Rent is defined as follows:

POF	 Clinical Risk Factor	 Social Risk Factor	 Specified Transitioning Criteria
POF 1 (BH POF)	<ul style="list-style-type: none">• Meet the access criteria for SMHS, <i>or</i>• Meet the access criteria for DMC, <i>or</i>• Meet the access criteria for DMC-ODS services	Experiencing or at risk of homelessness	Transitioning out of an institutional or congregate residential setting
POF 2			Transitioning out of a carceral setting
POF 3			Transitioning out of an interim setting
POF 4			Transitioning out of recuperative care or short-term post-hospitalization housing ¹
POF 5	<ul style="list-style-type: none">• Have one or more serious chronic physical health conditions, <i>or</i>• Pregnant to 12-months postpartum, <i>or</i>• Have physical, intellectual, <i>or</i> developmental disabilities		Transitioning out of foster care
POF 6			Experiencing unsheltered homelessness
POF 7			

Transitional Rent Contractual Relationships (Health Net – Los Angeles)



L.A. Care's Support for Members Experiencing Homelessness

Funding & Programmatic Updates



L.A. Care
HEALTH PLAN®

For All of L.A.

Prepared for Homeless Policy Deputies Meeting

September 11th, 2025

L.A. Care takes a holistic approach to serving our members experiencing homelessness

L.A. Care's various programs combine to provide a comprehensive suite of services to address critical member needs

Short Term Housing
Solutions

Increasing Access to
Permanent Housing

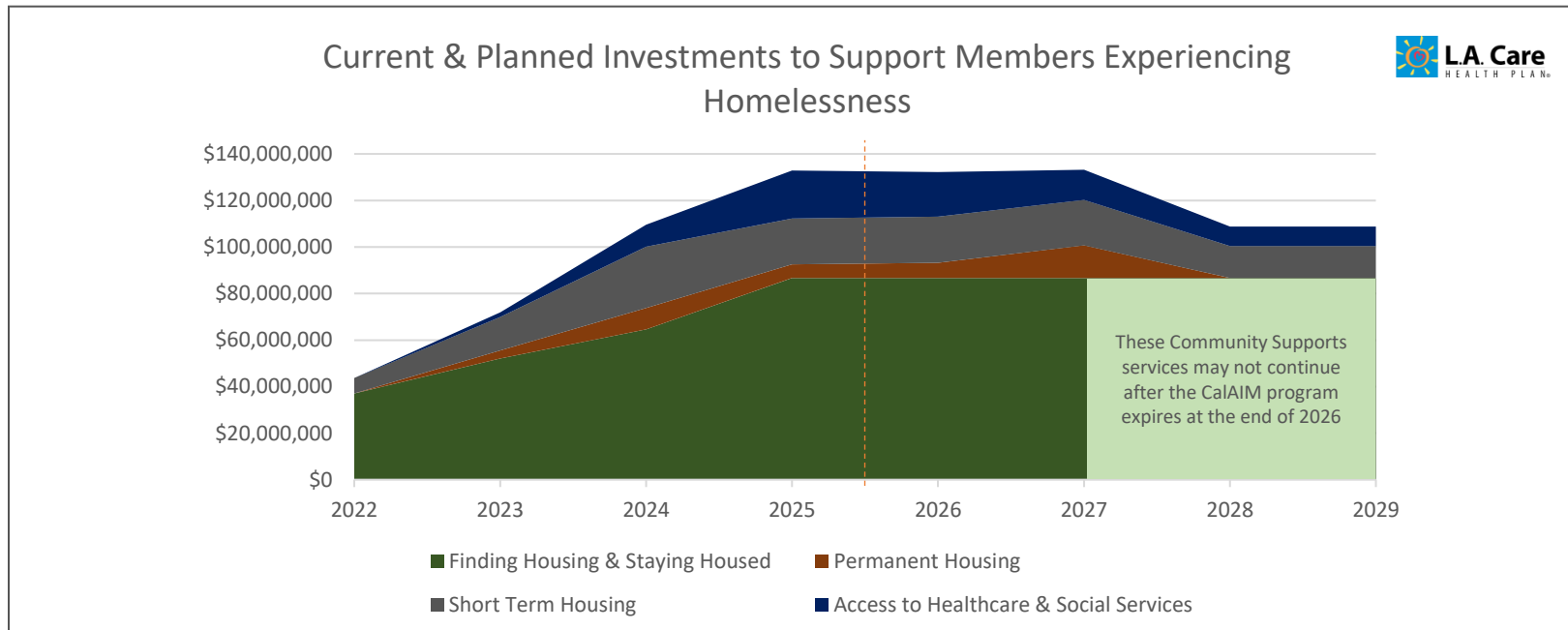
Finding Housing &
Staying Housed

Access to Healthcare & Social Services



CalAIM programs underpin L.A. Care's ability to mount this effort to address the housing crisis

Our comprehensive program to combat homelessness is becoming one of the County's largest, with over \$850M in total investment anticipated through 2029



NOTE: Only L.A. Care funding shown; Estimates include projected investment in the MacArthur Park Care Collaborative which has not yet been finalized; Estimates do not include Transitional Rent which L.A. Care will launch on January 1, 2026, significantly increasing annual housing program expenditures

L.A. County Field Medicine program supports & coordinates field-based primary care countywide

L.A. Care and Health Net launched the Field Medicine Program in July 2024 to ensure coverage across the entirety of L.A. County

18 providers, County agencies, and our partner MCP have come together to serve members experiencing homelessness in 16 distinct regions across the county

- L.A. County Department of Health Services
- Health Net
- L.A. County Emergency Centralized Response Center
- Skid Row & MacArthur Park Care Collaboratives
- 11 Community Clinics
- 4 standalone Field Medicine providers
- 2 Academic Medical Centers
- 10 new field medicine teams allocated based on population need



NOTE: L.A. Care led development of the Field Medicine program and launched the program in partnership with Health Net in July 2024; L.A. Care is funding 70% of both programs in line with membershare; Only L.A. Care expenditures are reflected on Slide 3

Two funding streams drive new capacity & performance within our Field Medicine Program

The Field Medicine Program will add new capacity to care for members while rewarding high performing teams for the care they are already delivering

Capacity Building Incentives

Deploying 10 new teams across the county using a novel population-based approach to enhance equitable access to care across the county

\$30M



+

Performance Incentives

Encouraging providers to engage members where they are, connect them to social services, and provide a true medical home

\$30M



Investment made in partnership with Health Net. L.A. Care is contributing 70% of funding and Health Net is contributing the remaining 30%

5-Year funding commitment to support hiring & longitudinal measurement

The Skid Row Care Collaborative compliments the County-wide Field Medicine program

Skid Row Care Collaborative, launched in partnership with DHS, Health Net, JWCH, and LA Christian Health Centers, brings enhanced services directly to the high density Skid Row community as part of the Skid Row Action Plan



₁Safe Services include access to mental health providers, legal and veterinary services, linkage to income, employment, and benefits support, and access to bathrooms, showers, laundry facilities, community activities

₂Community Ambassadors will be hired directly from the community to staff the Crocker Street Facility, supporting safe services and harm reduction services

₃Harm Reduction Services are specialized supports for people who use drugs, people with justice system involvement, people who engage in sex work and include observation beds, connection to social services, harm reduction supplies and access to limited medical services

₄Enhanced Healthcare Services include onsite specialty care, medical observation beds, and expanded hours for urgent care and pharmacy

Funding figures shown above include 30% contribution from Health Net; L.A. Care is committed to funding the remaining 70% of program costs; Only L.A. Care expenditures are reflected on Slide 3

The Field Medicine program is the foundation for coordinating Medi-Cal services in the field

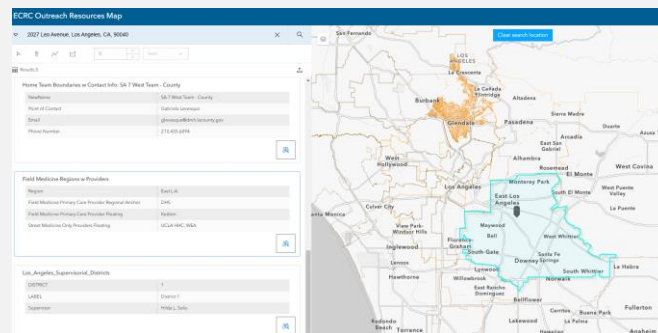
L.A. Care's Field Medicine Program facilitates field-level interoperability & integration with County emergency response for field-based primary care, and Medi-Cal funded social services (CalAIM)

Field Medicine providers increasingly deliver coordinated, field-based primary care, enhanced care management, and housing navigation

L.A. Care is working to ensure that Field Medicine providers hold contracts for both ECM and housing services, collocating these services with field based primary care, and ensuring members receive all three critical services from the same engaged provider

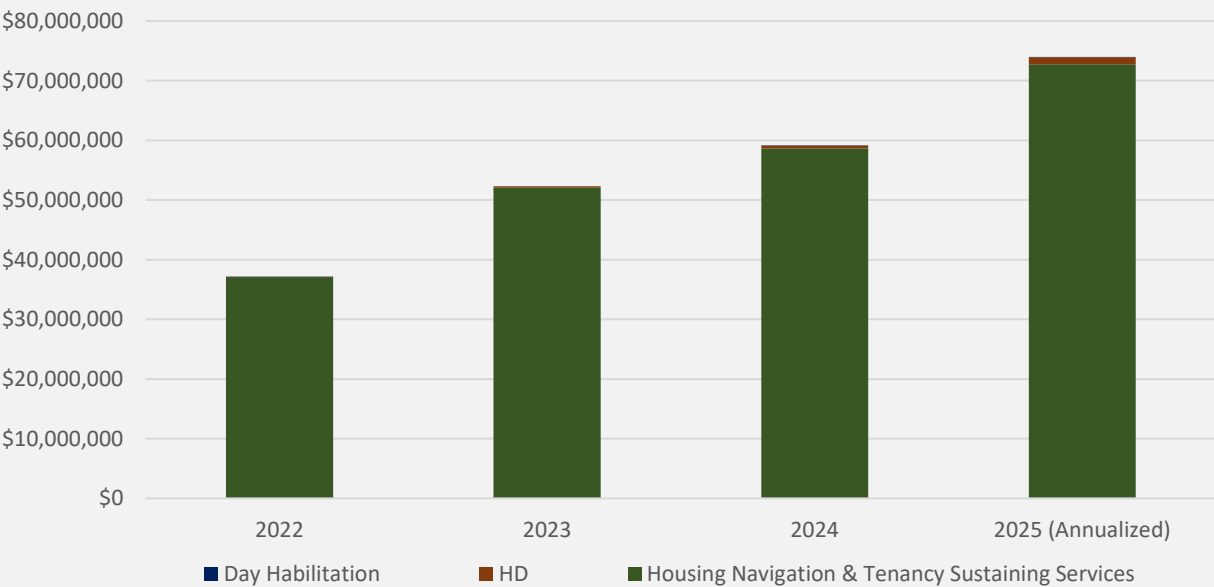
L.A. Care has partnered with the County's Emergency Centralized Response Center

This partnership ensures Medi-Cal services are integrated into the County homeless services system



CalAIM Housing Services facilitate permanent housing move-ins & continue to grow each year

L.A. Care Funding for Housing Services via Community Supports



Approximately 65% of this funding goes directly to DHS Housing for Health to support ICMS services; the remaining funding supports services delivered via L.A. Care’s directly contracted provider network

\$222M

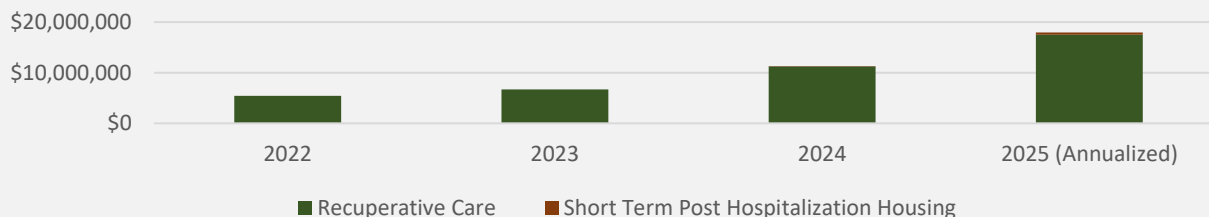
Expected L.A. Care contribution through the end of 2025



L.A. Care's programs help members move from unsheltered to sheltered environments

Community Supports & Community Investments improve member access to interim solutions while they wait for housing

L.A. Care Direct Funding for Short-Term Housing Services via Community Supports



\$41M

Expected L.A. Care contribution through the end of 2025



Investment made in partnership with Health Net. LA Care funding is reflected here, and represents 70% of total

L.A. Care Funding to Support Short-Term Housing Facilities via Community Investments

80+ individual grants to interim housing facilities planned through 2027 to support ADL upgrades, through partnership with Brilliant Corners



Augmented services, available in interim housing sites and shelters across multiple Service Planning Areas

\$43.5M

Committed through 2029



NOTE: Investments in ADL support made in conjunction with Health Net; L.A. Care only investments shown here: L.A. Care is funding 70%; Only L.A. Care expenditures are reflected on Slide 3

Partnership with County CEO, robust investment improves access to permanent units

Robust investments & County partnerships expand access to permanent housing units for members who have a subsidy in-hand—enhancing ability for members to transition to a housed environment

L.A. Care Funding to Support Permanent Housing via Community Investments

1,900 permanent housing units made available via master leasing planned through 2027

Investment made in partnership with Health Net. LA Care funding is reflected here, and represents 70% of total

\$40M

Investment in unit acquisition/master leasing

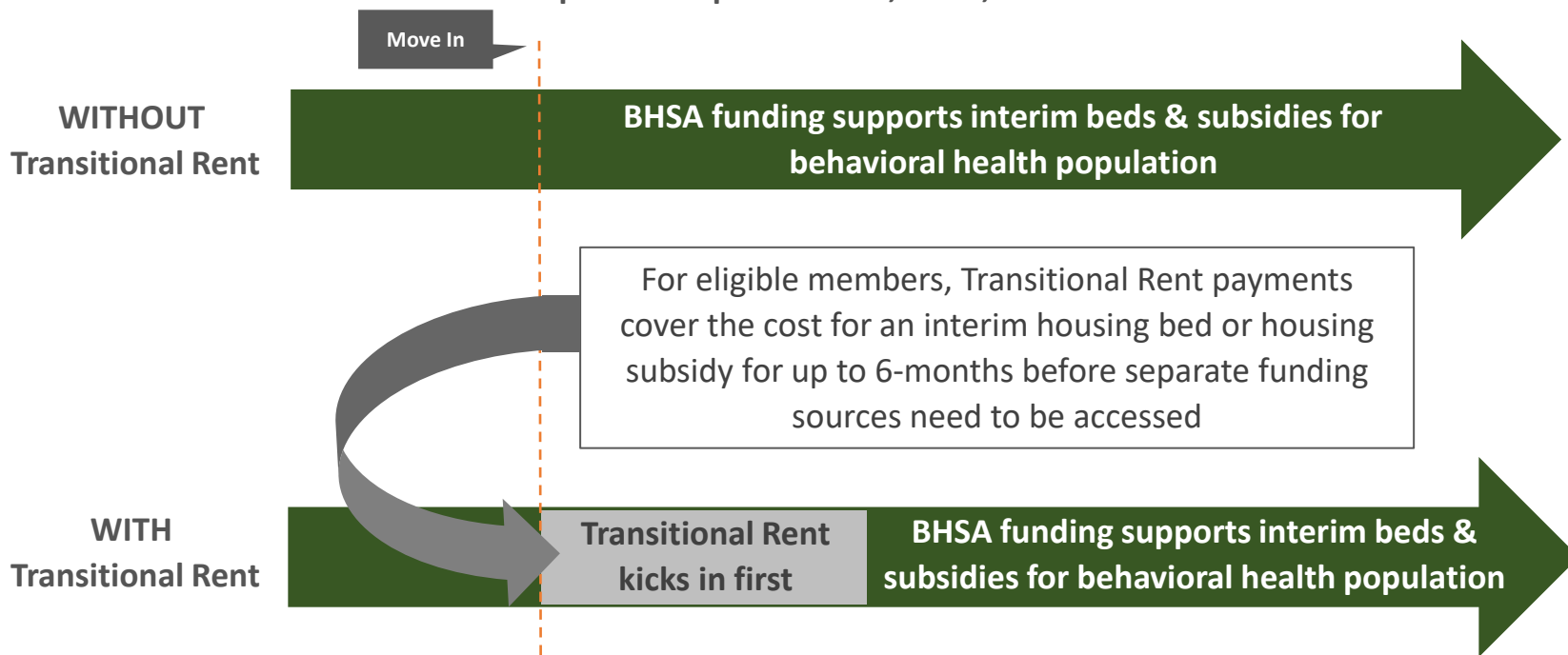


NOTE: Investments in Unit Acquisition/Master Leasing made in conjunction with Health Net; L.A. Care only contributions listed here; LA Care is funding 70% of both programs; Only L.A. Care expenditures are reflected on Slide 3



Transitional rent augments funding for interim beds & rental subsidies

Effective January 1, 2026 with a focus on the behavioral health population, through MCP partnerships with HSH, DMH, and SAP-C





Transitional Rent

- Transitional Rent was approved under the Behavioral Health Community-Based Organized Networks of Equitable Care and Treatment (**BH-CONNECT**) Initiative
- These waivers **began January 1, 2025** and are approved **through December 31, 2029**
- Transitional Rent provides **up to six months of rental support** for eligible Medi-Cal members and can serve as a **bridge to permanent housing**
- Transitional Rent can fund **room-and-board costs** for **interim** and **permanent housing**
- It is designed to be used in a **Flexible Housing Subsidy Pool model**, combining with other funding that can sustain housing

HSH will continue contracting with Brilliant Corners to operate the Flexible Housing Subsidy Pool and will operate Transitional Rent through the Flex Pool contract **beginning January 1, 2026**

HSH is partnering with **DMH and SAPC** to develop operational workflows for Transitional Rent



LOS ANGELES COUNTY DEPARTMENT OF PUBLIC HEALTH SUBSTANCE ABUSE PREVENTION AND CONTROL BUREAU

Homeless Policy Deputies' Meeting

September 11, 2025

Gary Tsai, MD
Director



SAPC Housing Landscape and PEH Served

- Current Housing Overview:

Recovery-Oriented Housing	FY 24-25	Projected by June 30, 2026	2025-26 Allocation
Recovery Bridge Housing (RBH)	1,735 beds	2,000 beds	\$36.9 Million
Recovery Housing (RH)	145 beds	195 beds	\$4.21 Million
Permanent Supportive Housing (PSH)	In Progress	120 Units	\$5.00 Million

- RBH is recovery-oriented, peer supportive interim housing providing a safe living environment for homeless or unstably housed clients while receiving outpatient SUD treatment.
- RH is similar to RBH **except** does not require concurrent enrollment in SUD treatment, however, must have engaged in SUD treatment within the last 90 days
- In FY 24/25, 4,637 unique clients accounting for 5,541 admissions, were admitted into SAPC's RBH network.

Integration of Transitional Rent (TR) in SAPC's Network

SAPC will contract with MCPs to support coverage of:

- ✓ Recovery Bridge Housing (interim housing)
- ✓ Permanent Supportive Housing (once implemented) to be managed by the Department of Homeless Services and Housing

• SAPC has submitted applications for Transitional Rent:

- ✓ LA Care
- ✓ Health Net

• SAPC intends to submit applications:

- ✓ Kaiser
- ✓ Anthem Blue Cross

►► DMH Implementation of CalAIM Community Supports

Rimmi Hundal, M.A.

Chief Deputy Director

Department of Mental Health



LOS ANGELES COUNTY
**DEPARTMENT OF
MENTAL HEALTH**
hope. recovery. wellbeing.

►► DMH Implementation of CalAIM Community Supports – Housing Deposits and Transitional Rent



Beginning July 1, 2026, the Behavioral Health Services Act (BHSA) requires counties to use 30% of their funding for Housing Interventions.



Counties can only use BHSA Housing Interventions to cover items or services that are not covered by Medi-Cal managed care including CalAIM Community Supports under the Managed Care Plans (MCPs) such as Transitional Rent and Housing Deposits.



Counties can use the BHSA Housing Interventions category to cover items or services not covered under Medi-Cal managed care or after the MCP Community Supports benefit is exhausted.



DMH is planning to leverage contracts held by the Department of Homeless Services and Housing (HSH) with the Medi-Cal MCPs rather than contracting directly and is currently working with HSH and their MCP partners to develop workflows and strategies on the roll out.



DMH leadership participates on weekly Housing Workgroup meetings hosted by the County Behavioral Health Directors Association of California (CBHDA) that are focused on the implementation of BHSA Housing Interventions and Transitional Rent and has used that forum to clarify policies and provide feedback to the State as appropriate given the significant impact Community Supports will have on BHSA and how it is implemented.



DMH plans to engage consultant services through the Emergency Declaration to support the implementation of the requirement to access CalAIM Community Supports prior to using BHSA Housing Interventions funds for eligible clients.

DMH Housing Landscape and CalAIM Community Supports

DMH Housing Resources	Total by July 1, 2026	Total 2026-27 Allocation
Interim Housing (IH)	2,067 beds	\$127.53 Million
Permanent Supportive Housing (PSH)	1,079 subsidies	\$36.51 Million



IH funding is used to fund IH beds which are intended to serve as a bridge to permanent housing for people experiencing homelessness who are living with Serious Emotional Disturbance (SED) or Serious Mental Illness (SMI).



PSH funding is used to provide DMH clients with SMI who are experiencing homelessness with locally-funded rental subsidies and move-in assistance.