

# Renewable Energy Ordinance Update

August 6th, 2025



# Agenda

- Project Background
- Project Overview
- Renewable Energy Technologies: Definitions + Existing Conditions
- Questions



**BACKGROUND**

# Background – Existing Ordinance

- The Renewable Energy Ordinance (REO) was adopted in December 2016. The REO sets requirements for:
  - Small scale and utility scale solar projects
  - Small scale wind projects
  - Temporary meteorological towers
- Battery Energy Storage Systems (BESS) is not explicitly defined in the County's Zoning Code. Currently, LA County Planning follows an interpretation memo that likens BESS to an Electric Distribution Substation.

# Background – Board Motions

- LA County Board of Supervisors passed two motions:
  - December 19, 2023 – “Developing a Los Angeles County Ordinance for Renewable Energy Zoning, Standards, and Requirements.”
  - April 9, 2024 – “Accelerating Renewable Energy Development and Promoting Community Resiliency in Los Angeles County.”





**PROJECT**

# Project Goals – Overall

Update the Renewable Energy Ordinance with a focus on utility-scale renewable energy facilities and add technologies such as BESS.



# Process

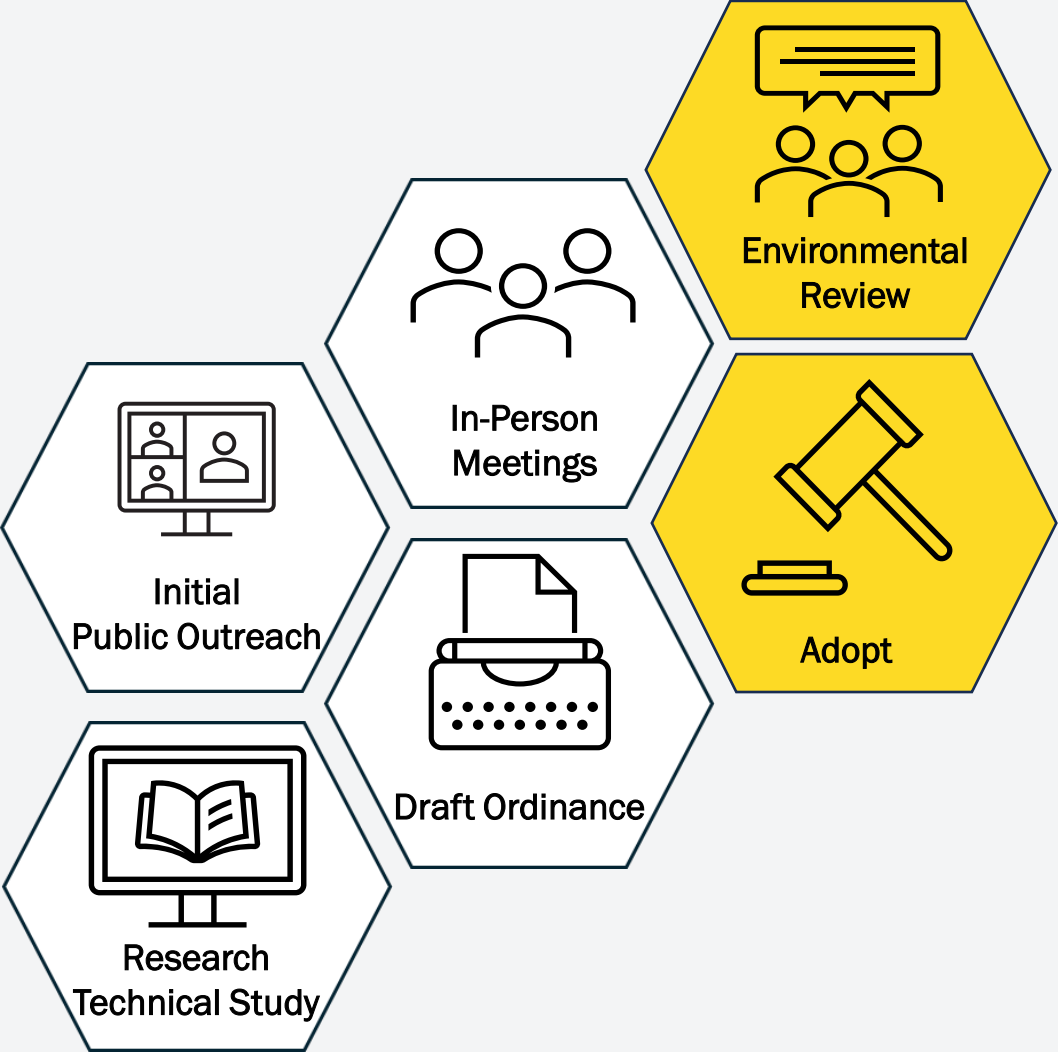




# Process



# Process



# **TECHNOLOGIES: DEFINITIONS + EXISTING CONDITIONS**

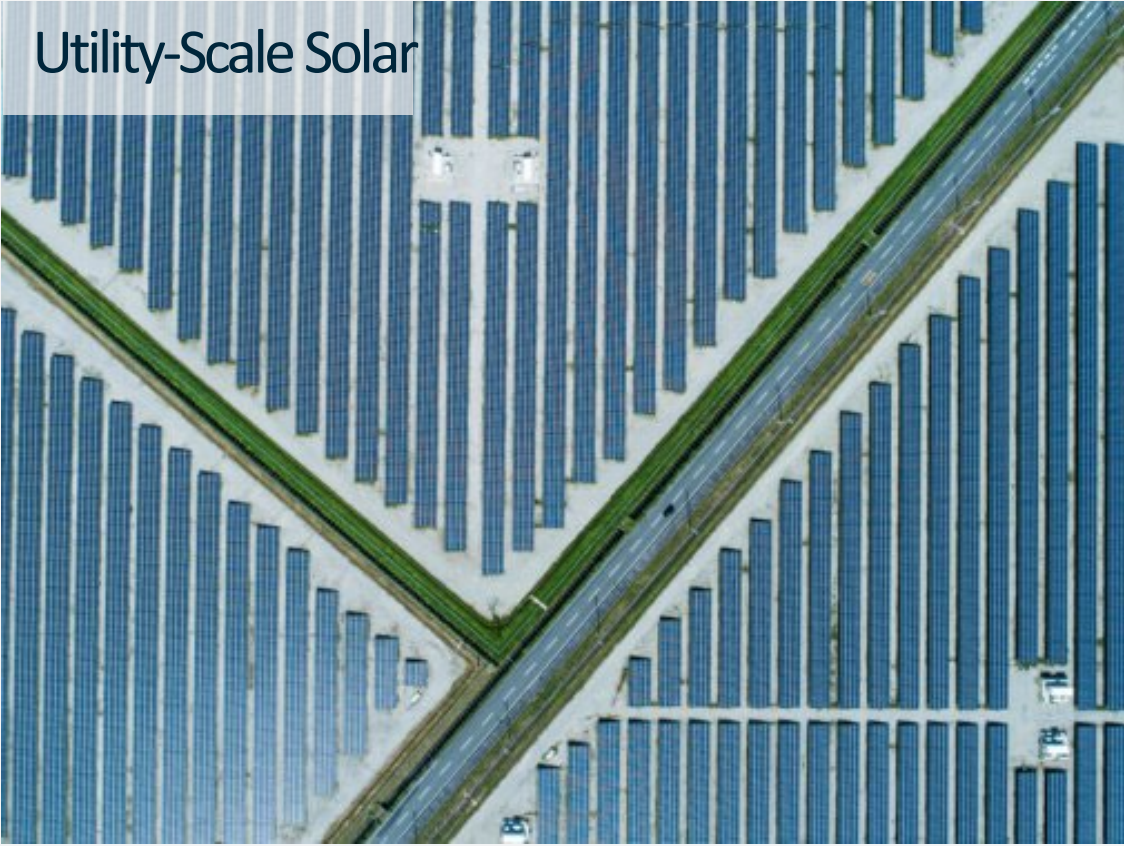
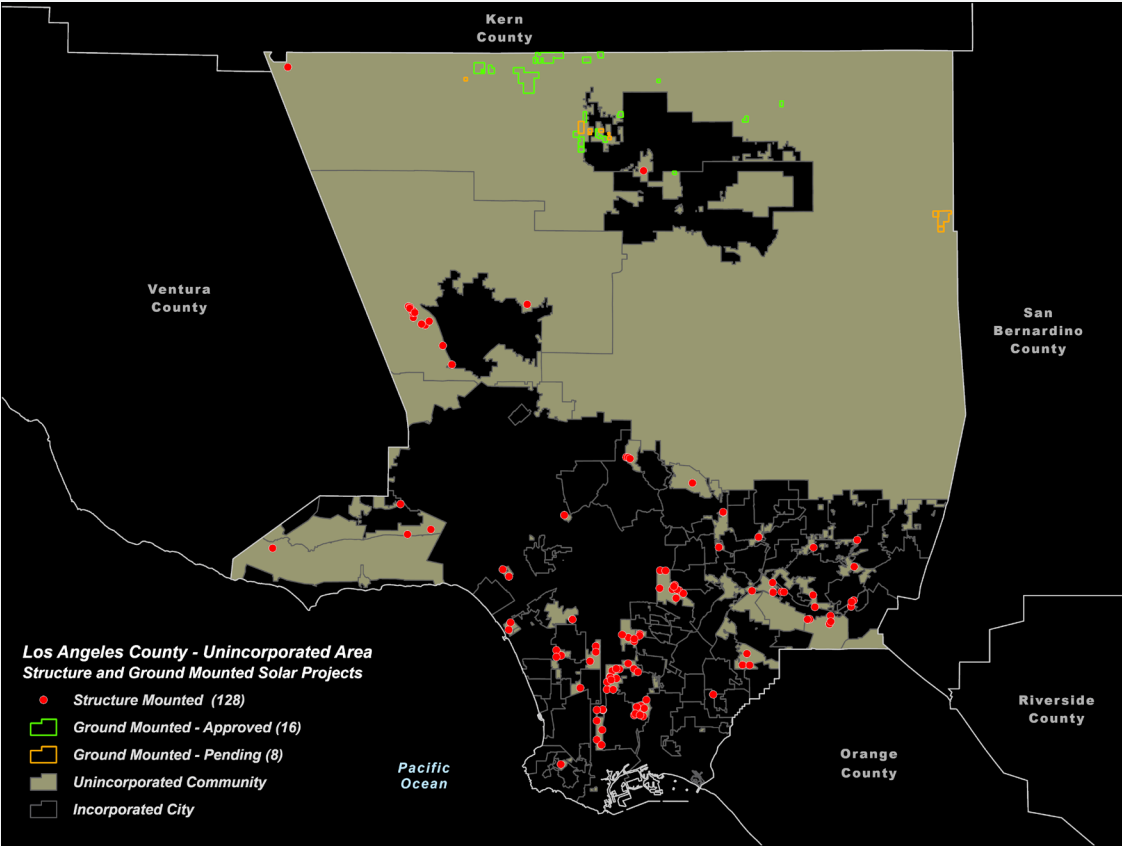
# Overview of Technologies

- Solar
- Wind
- BESS
- Green Hydrogen

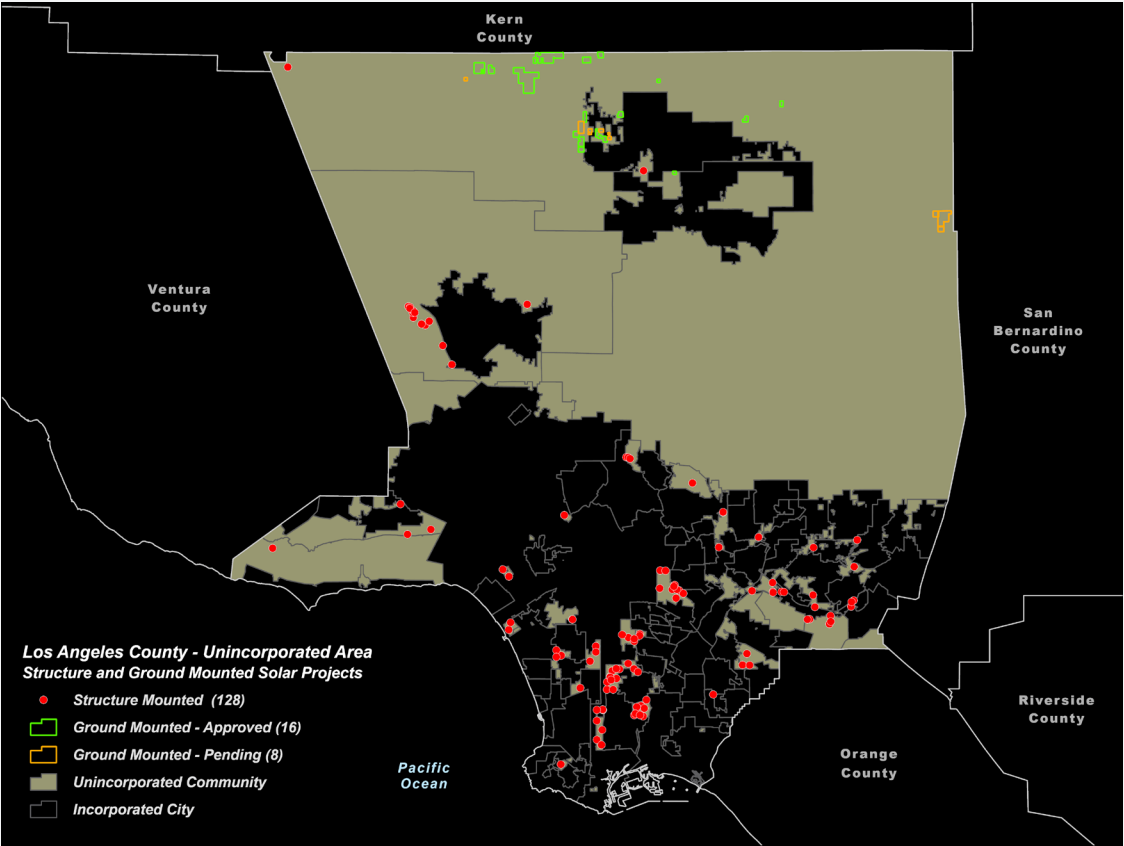




# Utility and Commercial-Scale Solar

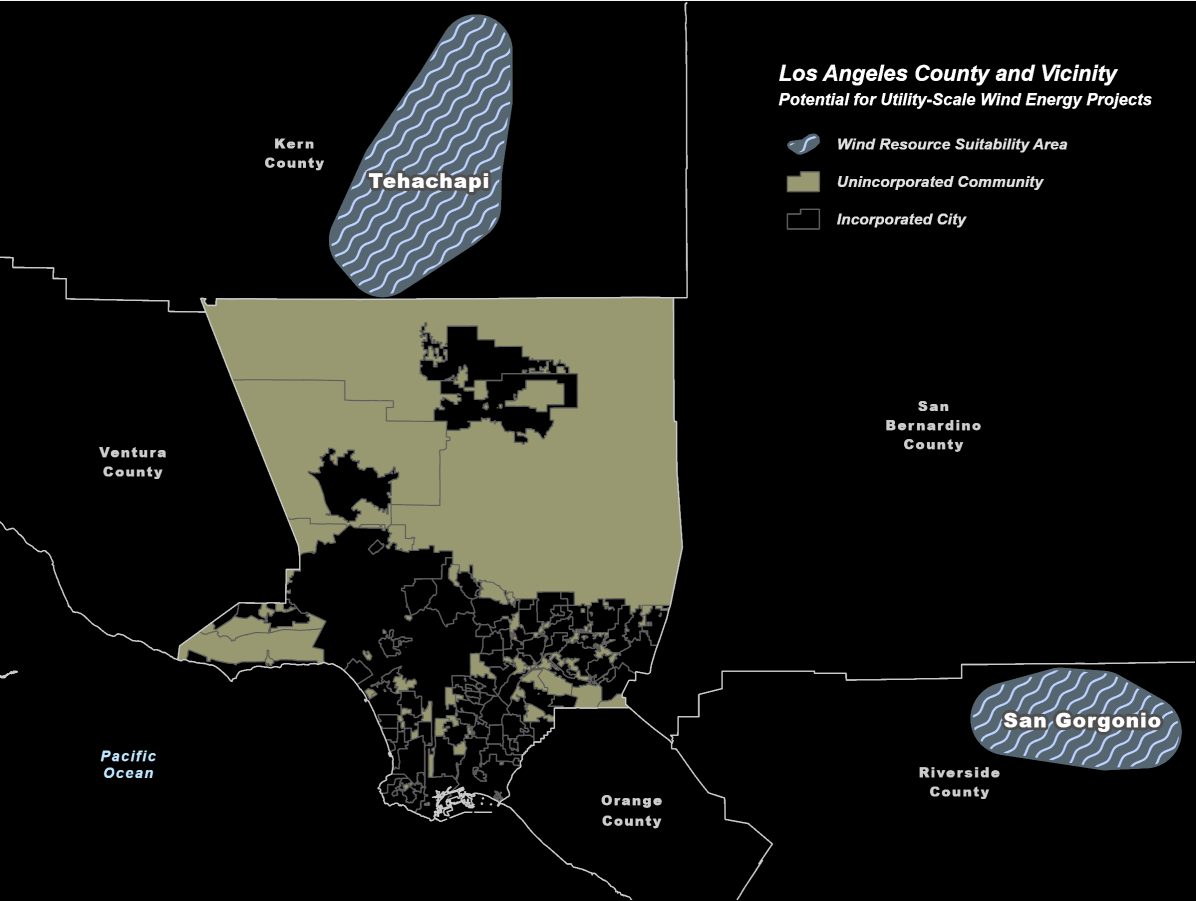


# Utility and Commercial-Scale Solar





# Utility-Scale Wind



LA COUNTY

PLANNING

SHAPING TOMORROW

# Small-Scale Wind

- There are **four** small-scale wind facilities currently in Unincorporated LA County
- They are all located in the 5<sup>th</sup> District
- Current maximum tower height is 85'



*Photo from Southwest Windpower, NREL 14936*

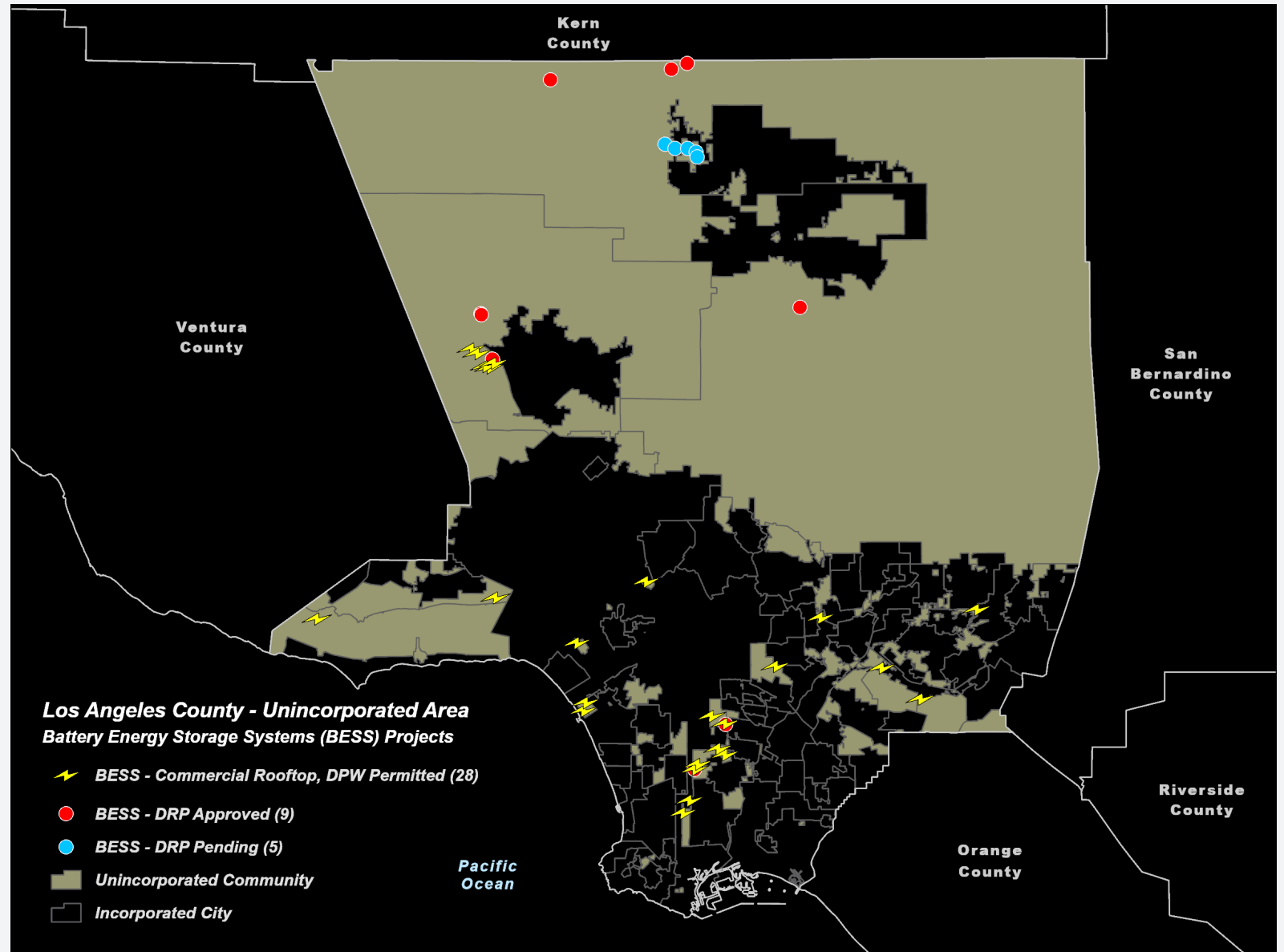


# Battery Energy Storage Systems (BESS)



- Electrochemical devices that charge, or collect, energy from the grid or a generation facility
- Store and discharge energy at a later time
- Helpful for utilizing renewable energy and increasing grid flexibility

# BESS Projects in Unincorporated LA County



# Green Hydrogen

Source: <https://www.sbec.com/About/Company-News/--SB-Completes-Green-Hydrogen-Plant-/>



Photo of a green hydrogen production facility in Woodbine, Georgia  
(15,000 kg/day of liquid hydrogen)

- Electrolysis: the splitting of hydrogen and oxygen from water molecules
- When the electricity to operate electrolysis is renewable, the hydrogen is considered 'green'





**NEXT STEPS**



# Contact Us

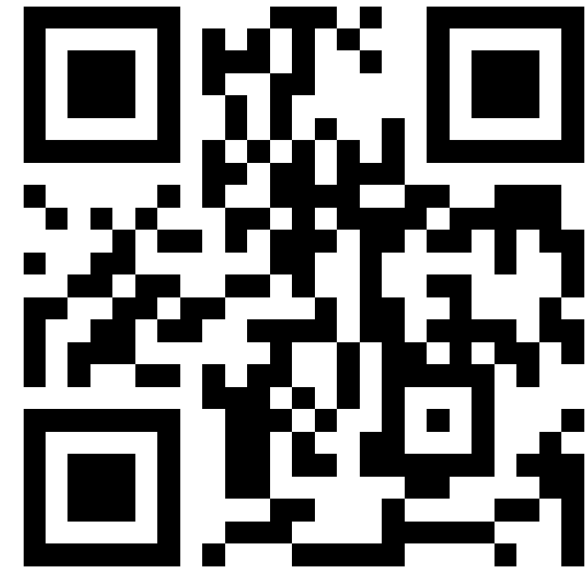
**Website:** <https://bit.ly/reo-update>

**Email:** [RenewableEnergy@planning.lacounty.gov](mailto:RenewableEnergy@planning.lacounty.gov)

**Phone:** 213-974-6476

**Mail:** LA County Planning  
320 W. Temple Street,  
Los Angeles, CA 90012

**Fill out our  
Survey**



<https://arcg.is/OTCbjT0>

**Q & A**